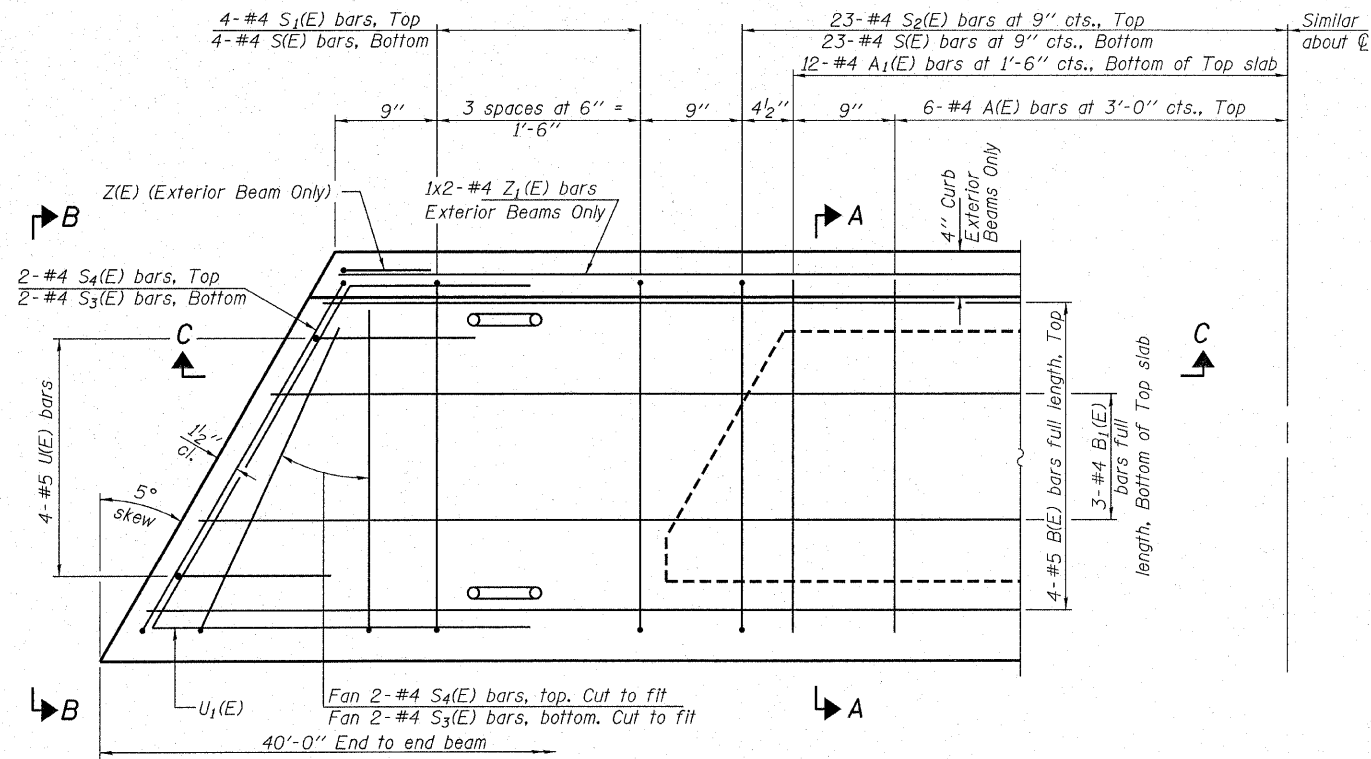
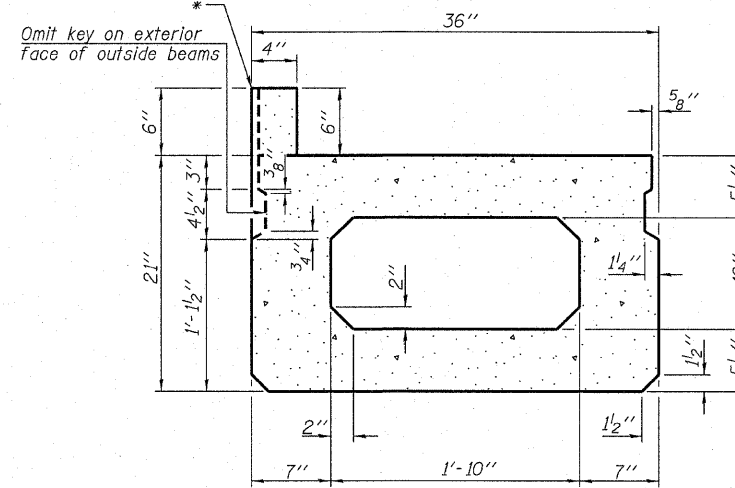


**SECTION C-C**



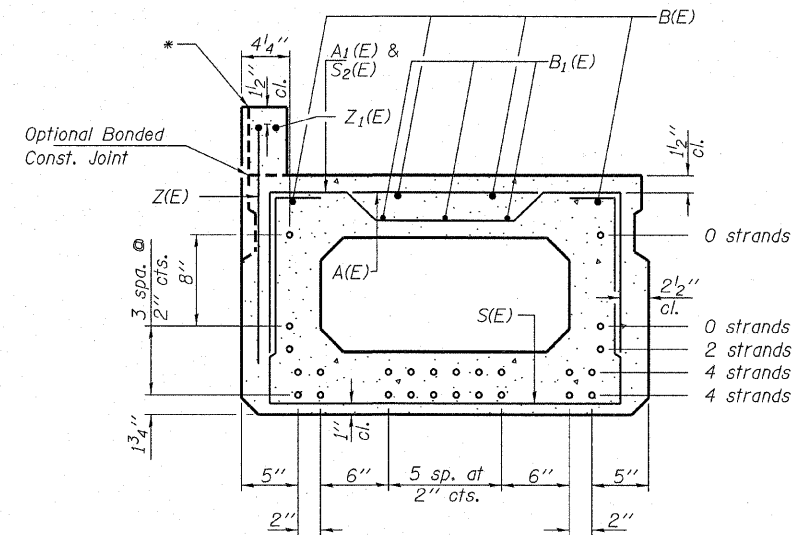
**PLAN VIEW**

Note: Spacing of S(E) and S2(E) bars may be adjusted up to 4" in the immediate area of the transverse tie diaphragms to miss the block outs for the transverse ties.



**SECTION A-A**

(Showing dimensions)

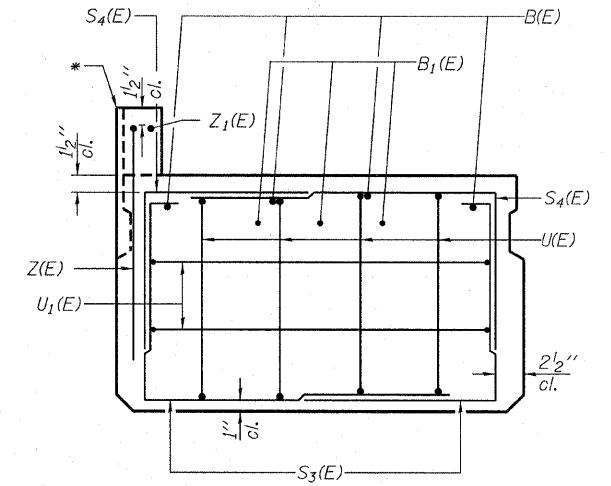


**SECTION A-A**

(Showing reinforcement and permissible strand locations)

Note: Place the number of strands specified in each row symmetrically about the centerline of beam in the permissible strand locations shown.

\* The exterior beams shall be cast with a 4" wide x 6" high concrete curb with reinforcement cast integrally with the beam. The Z(E) and Z1(E) bars shall be included in the unit cost for deck beams.



**VIEW B-B**

**BAR LIST**  
**ONE BEAM ONLY**

(For information only)

Bar	No.	Size	Length	Shape
A(E)	12	#4	2'-7"	—
A1(E)	24	#4	2'-11"	—
B(E)	4	#5	39'-8"	—
B1(E)	3	#4	39'-8"	—
S(E)	54	#4	6'-5"	┌
S1(E)	8	#4	4'-11"	┌
S2(E)	46	#4	5'-2"	┌
S3(E)	8	#4	4'-2"	┌
S4(E)	8	#4	3'-5"	┌
U(E)	8	#5	4'-0"	┌
U1(E)	4	#4	5'-3"	┌
Z(E)	*27	#4	2'-5"	┌
Z1(E)	*2	#4	39'-8"	—

Note: See sheets 21 & 24 for additional details and Bill of Material.

**SUPERSTRUCTURE**  
**21" X 36" PPC DECK BEAM**  
**STRUCTURE NO. 041-3738**

DESIGNED - A.S.L.
CHECKED - S.W.M.
DRAWN - D.A.B.
CHECKED - D.T.M.

**HAMPTON, LENZINI & RENWICK, INC.**  
CIVIL & STRUCTURAL ENGINEERS  
LAND SURVEYORS  
**HLR**  
3085 STEVENSON DRIVE, SUITE 201  
SPRINGFIELD, ILLINOIS 62703  
(217) 546-3400

T.R.	SECTION	COUNTY	TOTAL SHEETS	SHEET NO.
131	07-06121-00-BR	JEFFERSON	30	20
FARRINGTON ROAD DISTRICT		CONTRACT NO. 99350		
FED. ROAD DIST. NO.		ILLINOIS FED. AID PROJECT		

PROJECT NUMBER: 08.0126.130 DATE: 12/16/08