

CONSTRUCTION PROCEDURE NOTES

1. ALL CONTRACTOR EMPLOYEES WILL PARK THEIR PERSONAL VEHICLES IN THE AREA DESIGNATED BY THE AIRPORT MANAGER FOR USE AS A VEHICLE PARKING AREA. THE CONTRACTOR WILL BE RESPONSIBLE FOR TRANSPORTING EMPLOYEES TO THE PROPOSED CONSTRUCTION SITE. ONLY AUTHORIZED CONTRACTOR VEHICLES WILL BE ALLOWED ON THE AIR OPERATIONS AREA OF THE AIRPORT AND ON THE CONSTRUCTION SITE.
2. FLAGS WILL BE REQUIRED ON ALL CONTRACTOR'S VEHICLES AND EQUIPMENT USED ON THE AIRPORT OPERATIONS AREA AND CONSTRUCTION SITE. THE FLAGS SHALL BE THREE (3) FOOT SQUARE CHECKERED FLAGS (INTERNATIONAL ORANGE AND WHITE) DISPLAYED IN FULL VIEW ABOVE THE VEHICLE.
3. THE CONTRACTOR WILL USE THE DESIGNATED HAUL ROUTE AND EQUIPMENT STORAGE AREA SHOWN ON THIS SHEET. IT WILL BE THE CONTRACTOR'S RESPONSIBILITY TO MAINTAIN THE DESIGNATED HAUL ROUTE AND EQUIPMENT STORAGE AREA FOR THE DURATION OF THE PROJECT. ANY DAMAGE TO EXISTING PAVEMENTS USED TO HAUL MATERIAL TO THE CONSTRUCTION SITE WILL BE REPAIRED BY THE CONTRACTOR AT HIS OWN EXPENSE TO THE SATISFACTION OF THE AIRPORT MANAGER AND THE RESIDENT ENGINEER.
4. THE CONTRACTOR SHALL FURNISH, MAINTAIN, AND REMOVE ALL BARRICADES REQUIRED TO DELINEATE THE WORK AREA AND KEEP AIRCRAFT FROM ENCROACHING INTO SAID WORK AREA. THIS REQUIREMENT SHALL BE CONSIDERED INCIDENTAL TO THE CONTRACT AND NO ADDITIONAL COMPENSATION WILL BE ALLOWED.
5. CONSTRUCTION ACTIVITY CONTROL AND OPERATION AREA PROTECTION SHALL BE ACCOMPLISHED IN ACCORDANCE WITH FAA ADVISORY CIRCULAR NO. 150/5370-2E.
6. THE MAXIMUM CONSTRUCTION EQUIPMENT HEIGHT UTILIZED ON THE AIRPORT FOR THIS PROJECT SHALL BE 30'.
7. THIS PROJECT CONSISTS OF WORK TO REHABILITATE T-HANGAR ACCESS PAVEMENT-PHASE 2; REHABILITATE AUTO PARKING LOT.
8. THIS PROJECT WILL DISTURB LESS THAN 1 ACRE OF TURFED LAND.
9. THE AUTO PARKING LOT MAY BE USED BY AIRPORT USERS AND EMPLOYEES BETWEEN THE TIME MILLING OPERATIONS ARE PERFORMED AND THE TACK COAT IS APPLIED. AUTO PARKING WILL BE RE-DIRECTED TO TEMPORARY PARKING IN THE TURF SOUTH OF THE PARKING LOT WHILE THE TACK COAT, BITUMINOUS SURFACE PAVING AND PARKING LOT MARKING ARE ACCOMPLISHED. THE CONTRACTOR SHALL COORDINATE THE PARKING LOT CLOSURE AND TEMPORARY PARKING WITH THE AIRPORT MANAGER AND IN ACCORDANCE WITH HIS DIRECTION.

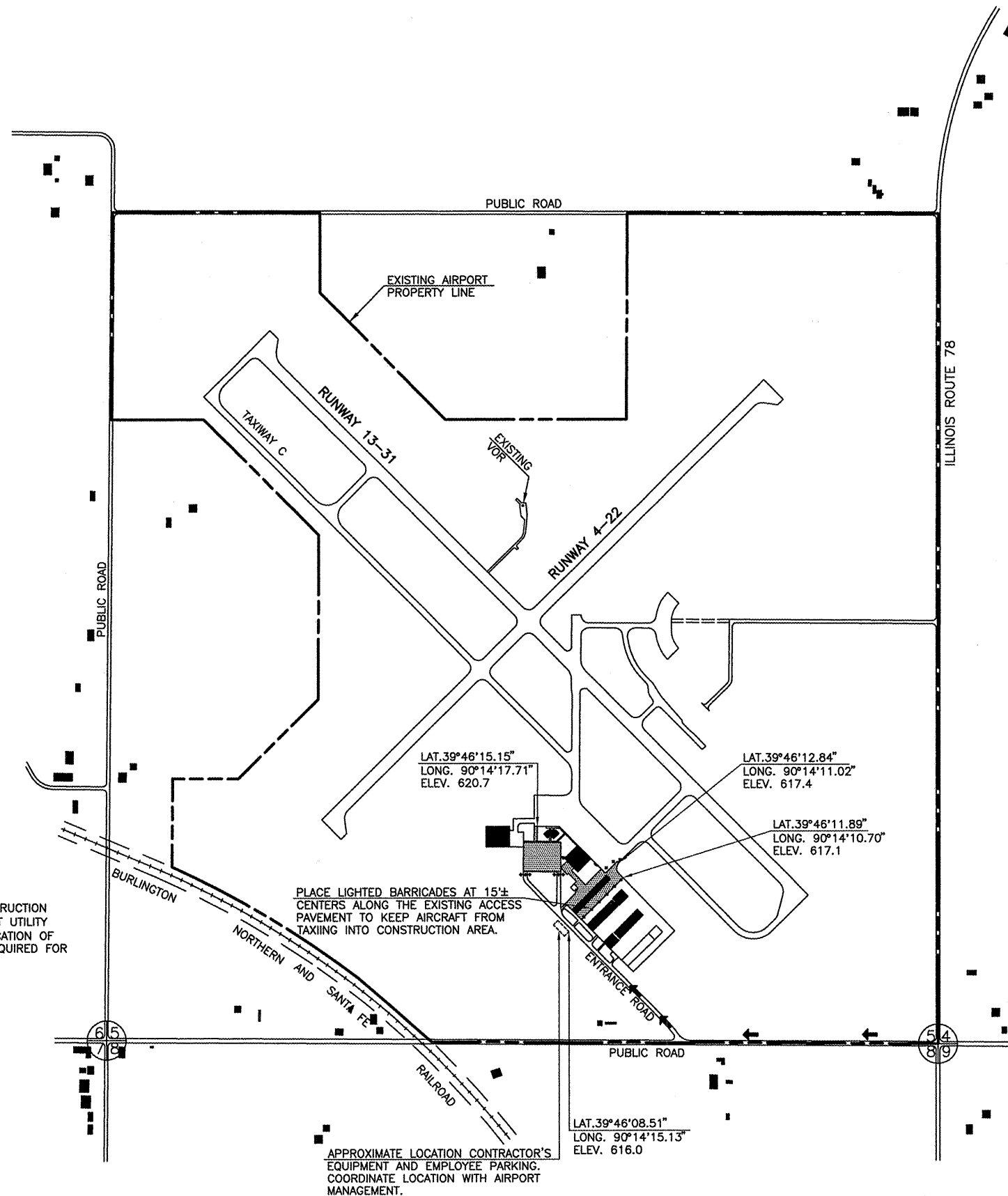
LEGEND

- EXISTING BUILDING
- AIRPORT PROPERTY LINE
- CONTRACTOR'S ACCESS/HAUL ROUTE
- REHABILITATE T-HANGAR PAVEMENT - PHASE 2; REHABILITATE AUTO PARKING LOT
- LOCATION OF LIGHTED BARRICADES

GENERAL NOTE

1. THE CONTRACTOR SHALL BE RESPONSIBLE FOR PROTECTING UTILITY PROPERTY FROM CONSTRUCTION OPERATIONS. PRIOR TO STARTING WORK, THE CONTRACTOR SHALL CONTACT J.U.L.I.E. (JOINT UTILITY LOCATING INFORMATION FOR EXCAVATORS) PHONE: 1-800-892-0123 TO ARRANGE FOR LOCATION OF UTILITIES IN THE WORK AREA. A MINIMUM OF FORTY-EIGHT HOURS ADVANCE NOTICE IS REQUIRED FOR NON-EMERGENCY WORK.

COUNTY - MORGAN
 CITY - JACKSONVILLE
 TOWNSHIP - T. 15 N., R. 10 W.
 SECTION NO. - 5
 ADDRESS - JACKSONVILLE MUNICIPAL AIRPORT
 1956 BALDWIN ROAD
 JACKSONVILLE, ILLINOIS 62650



PLACE LIGHTED BARRICADES AT 15'± CENTERS ALONG THE EXISTING ACCESS PAVEMENT TO KEEP AIRCRAFT FROM TAXIING INTO CONSTRUCTION AREA.

APPROXIMATE LOCATION CONTRACTOR'S EQUIPMENT AND EMPLOYEE PARKING. COORDINATE LOCATION WITH AIRPORT MANAGEMENT.

JACKSONVILLE MUNICIPAL AIRPORT JACKSONVILLE, ILLINOIS	
IMPROVEMENT AND SAFETY PLAN	
HUTCHISON ENGINEERING, INC. JACKSONVILLE, ILLINOIS	
DRAWN BY: T.J.D. DATE: MARCH, 2009	ILL. PROJ. NO. UX-3866 AIP PROJ. NO. 3-17-0054-B13