

10A

JA035  
TOTAL SHEETS = 7

# CONSTRUCTION PLANS FOR JACKSONVILLE MUNICIPAL AIRPORT

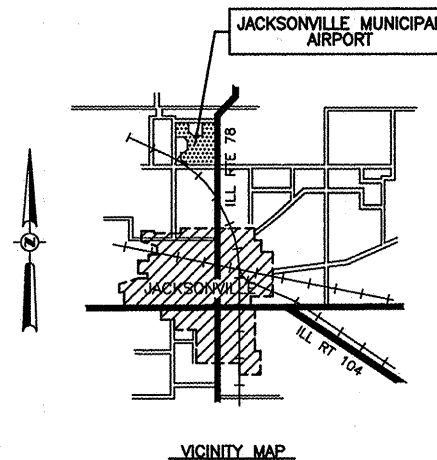
## JACKSONVILLE, MORGAN COUNTY, ILLINOIS

### REHABILITATE T-HANGAR ACCESS PAVEMENT – PHASE 2; REHABILITATE AUTO PARKING LOT

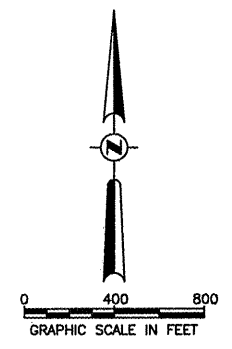
ILLINOIS PROJECT NO. IJX-3866  
AIP PROJECT NO. 3-17-0054-B13  
MARCH 20, 2009

SUMMARY OF QUANTITIES				
ITEM NO.	DESCRIPTION	UNIT	AS BID QUANTITY	AS BUILT QUANTITY
AR152410	UNCLASSIFIED EXCAVATION	CU. YD.	20	
AR201660	BITUMINOUS CRACK REPAIR	LIN. FT.	2,000	
AR209510	CRUSHED AGGREGATE BASE COURSE	TON	452	
AR209650	AGGREGATE BASE PREPARATION	SQ. YD.	5,048	
AR401610	BITUMINOUS SURFACE COURSE	TON	1,658	
AR401650	BITUMINOUS PAVEMENT MILLING	SQ. YD.	4,998	
AR401655	BUTT JOINT CONSTRUCTION	SQ. YD.	44	
AR401901	REMOVE BITUMINOUS SURFACE COURSE	SQ. YD.	5,391	
AR602510	BITUMINOUS PRIME COAT	GAL.	1,790	
AR603510	BITUMINOUS TACK COAT	GAL.	360	
AR820520	PAVEMENT MARKING – WATERBOURNE	SQ. FT.	1,102	
AR701512	12" RCP, CLASS IV	LIN. FT.	186	
AR751411	INLET – TYPE A	EACH	3	
AR901510	SEEDING	ACRE	0.1	
AR908510	MULCHING	ACRE	0.1	
AR910230	HANDICAP SIGN	EACH	3	

INDEX OF SHEETS	
NO.	DESCRIPTION
1	COVER SHEET
2	IMPROVEMENT AND SAFETY PLAN
3	TYPICAL SECTIONS AND STORM SEWER DETAILS
4	STORM SEWER LAYOUT AND HANGAR PAVEMENT MILLING
5	T-HANGAR PAVEMENT ELEVATIONS AND GRADING LAYOUT
6	PARKING LOT PLAN LAYOUT AND PAVEMENT MARKING
7	STANDARD DRAWINGS



	PLANS PREPARED BY : <b>HUTCHISON ENGINEERING, INC.</b> JACKSONVILLE, ILLINOIS	<b>JACKSONVILLE AIRPORT AUTHORITY</b>
	SUBMITTED <i>Doug J. White</i> DATE <i>March 10, 2009</i>	APPROVED <i>[Signature]</i> CHAIRMAN DATE <i>03-10-2009</i>



CONSTRUCTION PROCEDURE NOTES

1. ALL CONTRACTOR EMPLOYEES WILL PARK THEIR PERSONAL VEHICLES IN THE AREA DESIGNATED BY THE AIRPORT MANAGER FOR USE AS A VEHICLE PARKING AREA. THE CONTRACTOR WILL BE RESPONSIBLE FOR TRANSPORTING EMPLOYEES TO THE PROPOSED CONSTRUCTION SITE. ONLY AUTHORIZED CONTRACTOR VEHICLES WILL BE ALLOWED ON THE AIR OPERATIONS AREA OF THE AIRPORT AND ON THE CONSTRUCTION SITE.
2. FLAGS WILL BE REQUIRED ON ALL CONTRACTOR'S VEHICLES AND EQUIPMENT USED ON THE AIRPORT OPERATIONS AREA AND CONSTRUCTION SITE. THE FLAGS SHALL BE THREE (3) FOOT SQUARE CHECKERED FLAGS (INTERNATIONAL ORANGE AND WHITE) DISPLAYED IN FULL VIEW ABOVE THE VEHICLE.
3. THE CONTRACTOR WILL USE THE DESIGNATED HAUL ROUTE AND EQUIPMENT STORAGE AREA SHOWN ON THIS SHEET. IT WILL BE THE CONTRACTOR'S RESPONSIBILITY TO MAINTAIN THE DESIGNATED HAUL ROUTE AND EQUIPMENT STORAGE AREA FOR THE DURATION OF THE PROJECT. ANY DAMAGE TO EXISTING PAVEMENTS USED TO HAUL MATERIAL TO THE CONSTRUCTION SITE WILL BE REPAIRED BY THE CONTRACTOR AT HIS OWN EXPENSE TO THE SATISFACTION OF THE AIRPORT MANAGER AND THE RESIDENT ENGINEER.
4. THE CONTRACTOR SHALL FURNISH, MAINTAIN, AND REMOVE ALL BARRICADES REQUIRED TO DELINEATE THE WORK AREA AND KEEP AIRCRAFT FROM ENCROACHING INTO SAID WORK AREA. THIS REQUIREMENT SHALL BE CONSIDERED INCIDENTAL TO THE CONTRACT AND NO ADDITIONAL COMPENSATION WILL BE ALLOWED.
5. CONSTRUCTION ACTIVITY CONTROL AND OPERATION AREA PROTECTION SHALL BE ACCOMPLISHED IN ACCORDANCE WITH FAA ADVISORY CIRCULAR NO. 150/5370-2E.
6. THE MAXIMUM CONSTRUCTION EQUIPMENT HEIGHT UTILIZED ON THE AIRPORT FOR THIS PROJECT SHALL BE 30'.
7. THIS PROJECT CONSISTS OF WORK TO REHABILITATE T-HANGAR ACCESS PAVEMENT-PHASE 2; REHABILITATE AUTO PARKING LOT.
8. THIS PROJECT WILL DISTURB LESS THAN 1 ACRE OF TURFED LAND.
9. THE AUTO PARKING LOT MAY BE USED BY AIRPORT USERS AND EMPLOYEES BETWEEN THE TIME MILLING OPERATIONS ARE PERFORMED AND THE TACK COAT IS APPLIED. AUTO PARKING WILL BE RE-DIRECTED TO TEMPORARY PARKING IN THE TURF SOUTH OF THE PARKING LOT WHILE THE TACK COAT, BITUMINOUS SURFACE PAVING AND PARKING LOT MARKING ARE ACCOMPLISHED. THE CONTRACTOR SHALL COORDINATE THE PARKING LOT CLOSURE AND TEMPORARY PARKING WITH THE AIRPORT MANAGER AND IN ACCORDANCE WITH HIS DIRECTION.

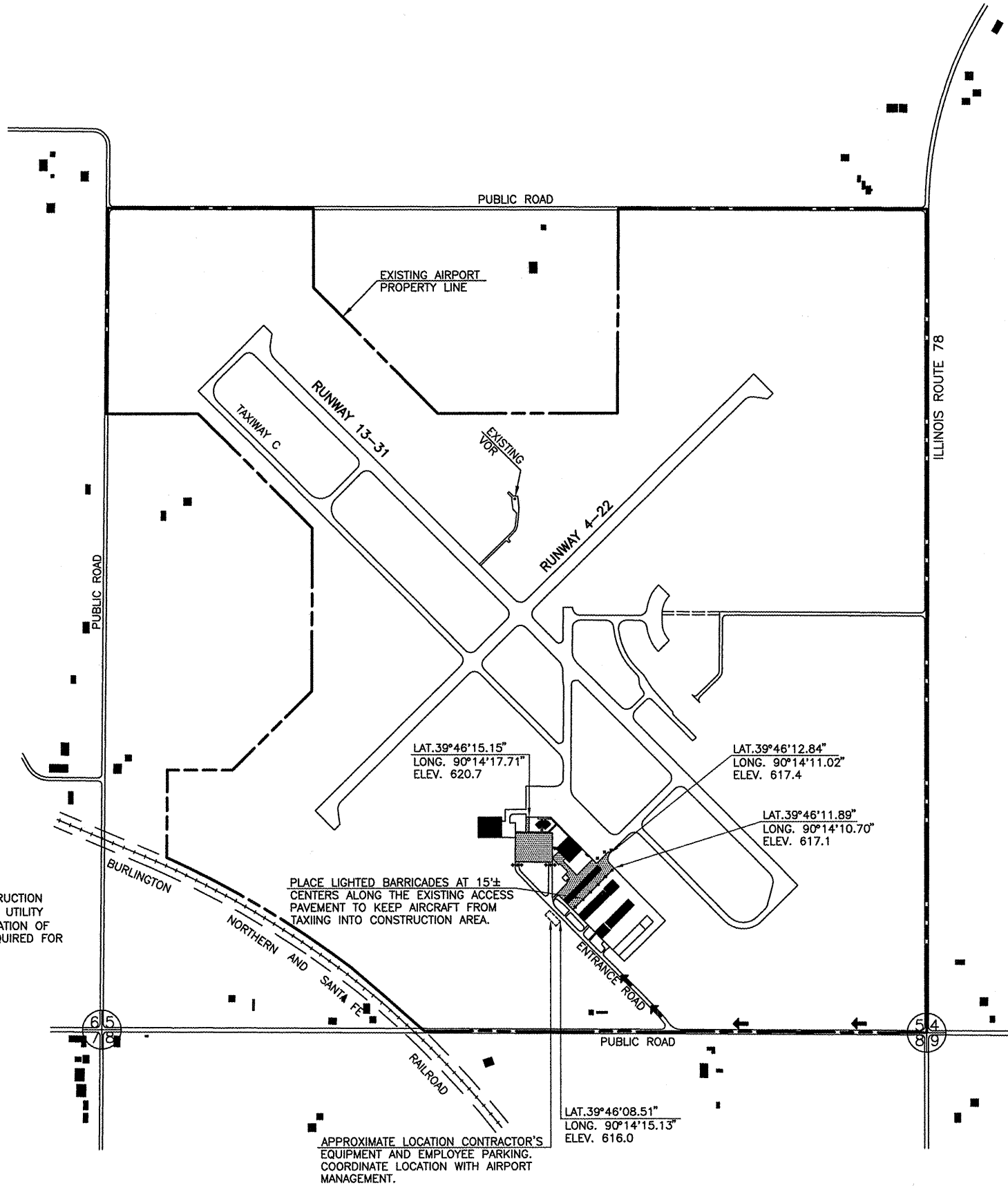
LEGEND

- EXISTING BUILDING
- AIRPORT PROPERTY LINE
- CONTRACTOR'S ACCESS/HAUL ROUTE
- REHABILITATE T-HANGAR PAVEMENT - PHASE 2; REHABILITATE AUTO PARKING LOT
- LOCATION OF LIGHTED BARRICADES

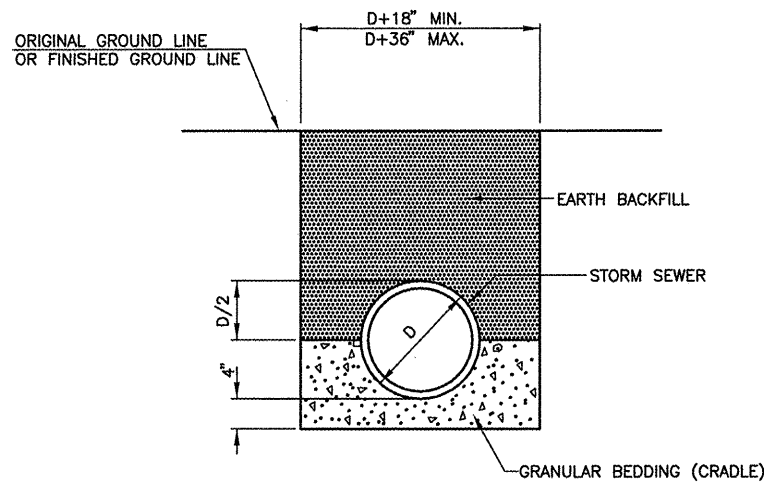
GENERAL NOTE

1. THE CONTRACTOR SHALL BE RESPONSIBLE FOR PROTECTING UTILITY PROPERTY FROM CONSTRUCTION OPERATIONS. PRIOR TO STARTING WORK, THE CONTRACTOR SHALL CONTACT J.U.L.I.E. (JOINT UTILITY LOCATING INFORMATION FOR EXCAVATORS) PHONE: 1-800-892-0123 TO ARRANGE FOR LOCATION OF UTILITIES IN THE WORK AREA. A MINIMUM OF FORTY-EIGHT HOURS ADVANCE NOTICE IS REQUIRED FOR NON-EMERGENCY WORK.

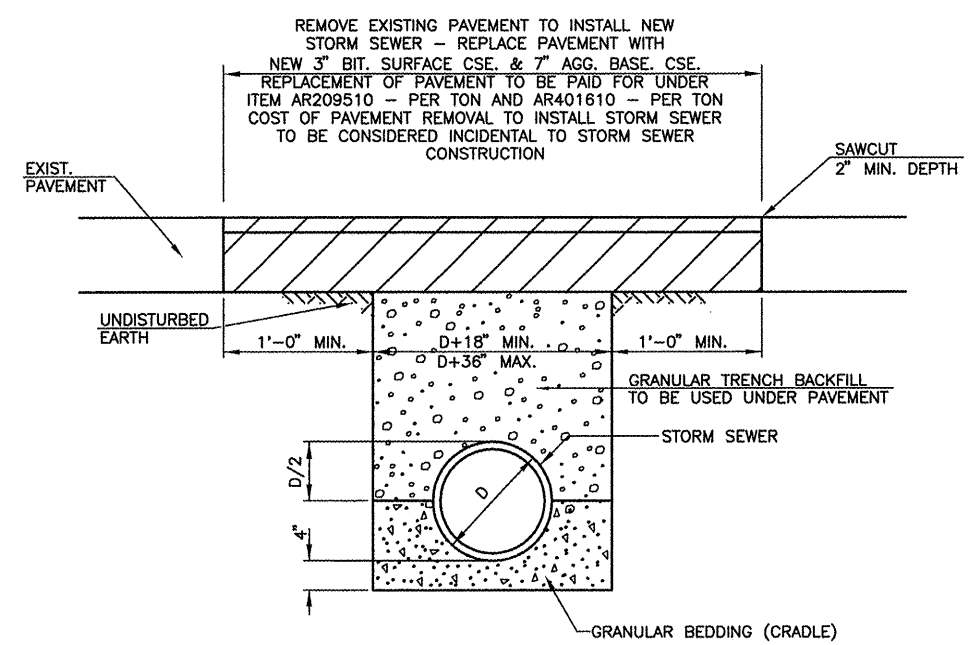
COUNTY - MORGAN  
 CITY - JACKSONVILLE  
 TOWNSHIP - T. 15 N., R. 10 W.  
 SECTION NO. - 5  
 ADDRESS - JACKSONVILLE MUNICIPAL AIRPORT  
 1956 BALDWIN ROAD  
 JACKSONVILLE, ILLINOIS 62650



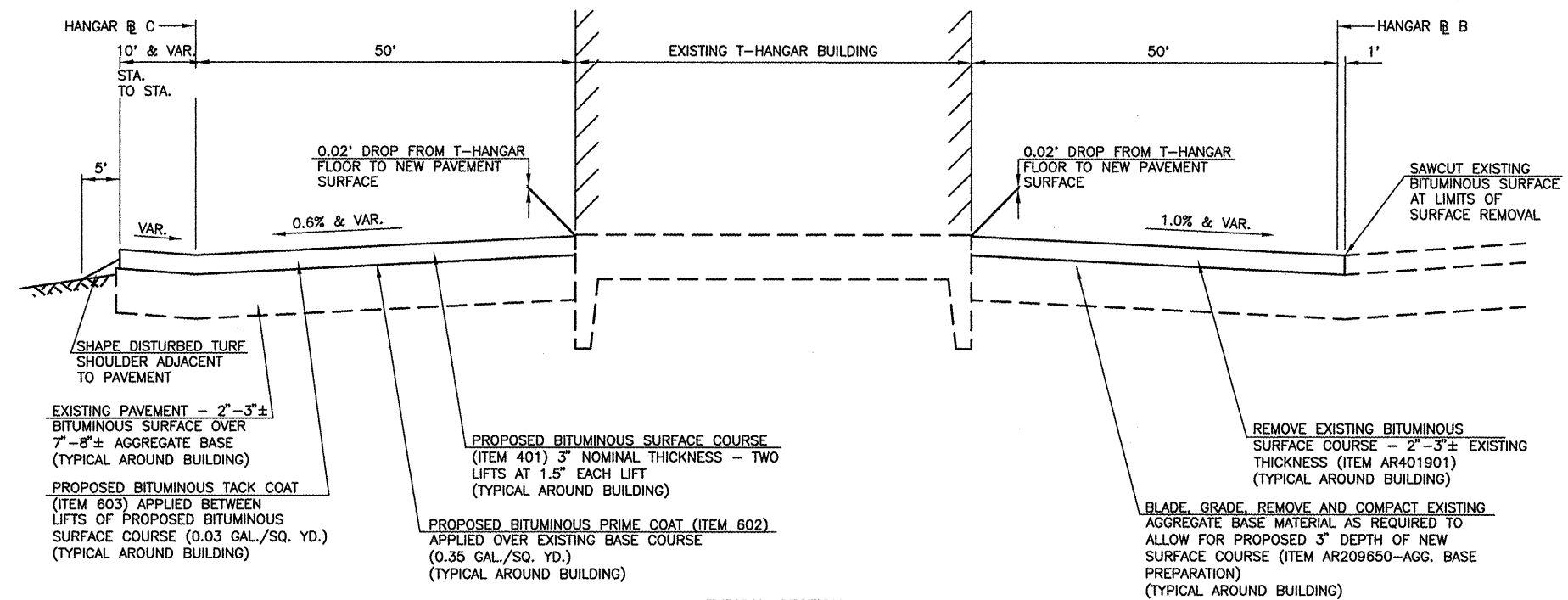
JACKSONVILLE MUNICIPAL AIRPORT JACKSONVILLE, ILLINOIS	
<b>IMPROVEMENT AND SAFETY PLAN</b>	
HUTCHISON ENGINEERING, INC. JACKSONVILLE, ILLINOIS	
DRAWN BY: T.J.D. DATE: MARCH, 2009	ILL. PROJ. NO. UX-3866 AIP PROJ. NO. 3-17-0054-B13



TYPICAL STORM SEWER TRENCH DETAILS

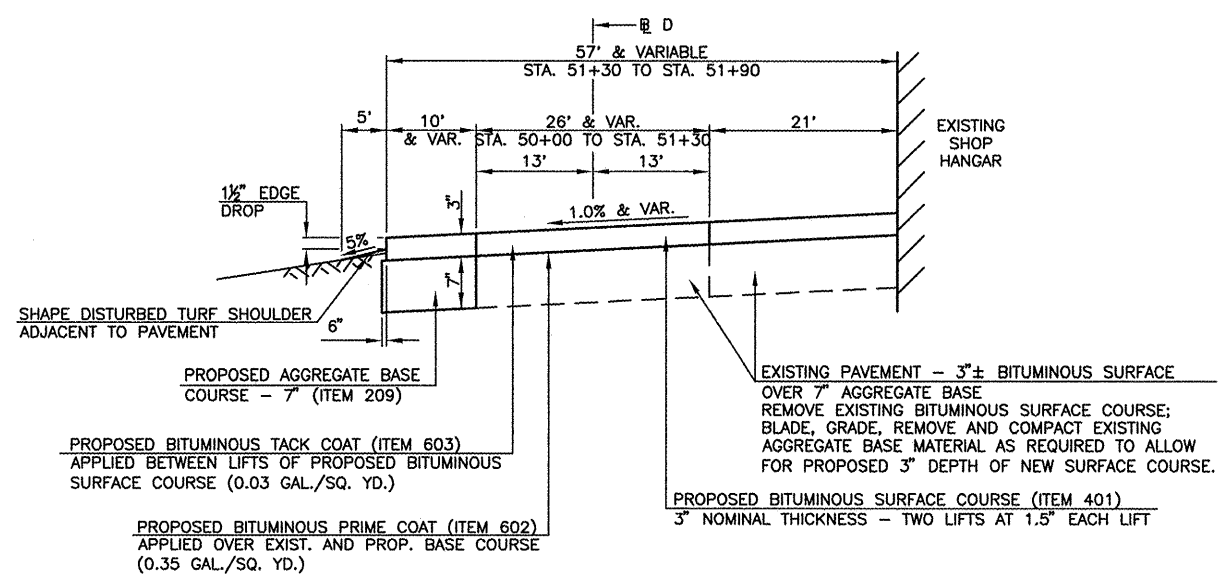


REMOVE EXISTING PAVEMENT TO INSTALL NEW STORM SEWER - REPLACE PAVEMENT WITH NEW 3" BIT. SURFACE CSE. & 7" AGG. BASE CSE. REPLACEMENT OF PAVEMENT TO BE PAID FOR UNDER ITEM AR209510 - PER TON AND AR401610 - PER TON COST OF PAVEMENT REMOVAL TO INSTALL STORM SEWER TO BE CONSIDERED INCIDENTAL TO STORM SEWER CONSTRUCTION



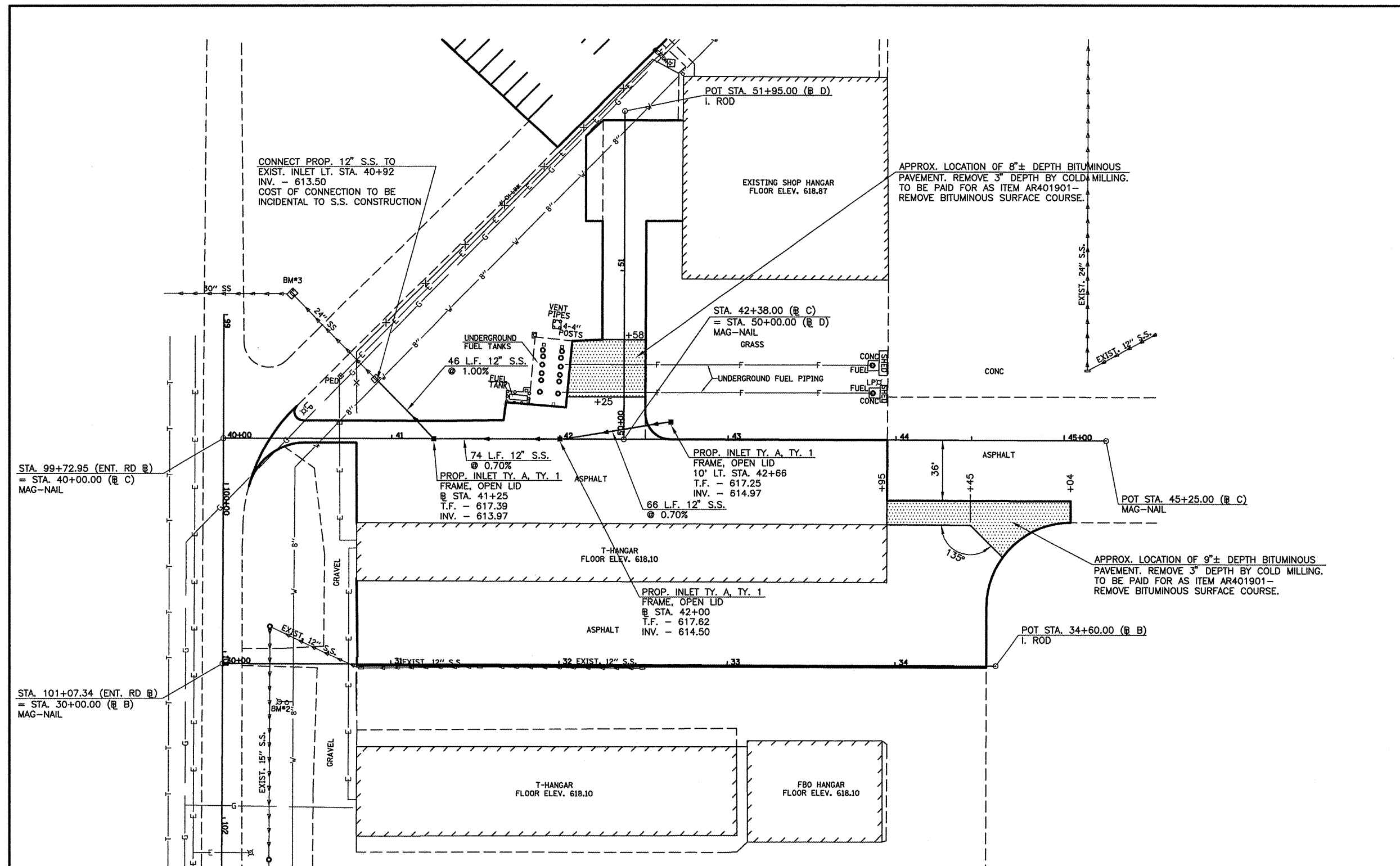
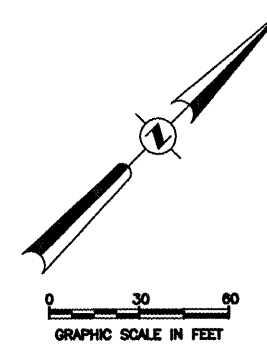
TYPICAL SECTION T-HANGAR PAVEMENT

GENERAL NOTE: THE DISTURBED TURF SHOULDER ADJACENT TO THE NEWLY SURFACED AND/OR WIDENED PAVEMENT SHALL BE SHAPED USING THE EXCAVATED MATERIAL OBTAINED FROM THE PAVEMENT WIDENING AND THE PROPOSED STORM SEWER TRENCHING OPERATIONS. ANY EXCESS EXCAVATED MATERIAL REMAINING UPON COMPLETION OF THE SHOULDER SHAPING SHALL BE DISPOSED OF OFF THE AIRPORT SITE BY THE CONTRACTOR. THIS WORK SHALL BE CONSIDERED INCIDENTAL TO UNCLASSIFIED EXCAVATION (ITEM 152).



TYPICAL SECTION HANGAR ACCESS PAVEMENT

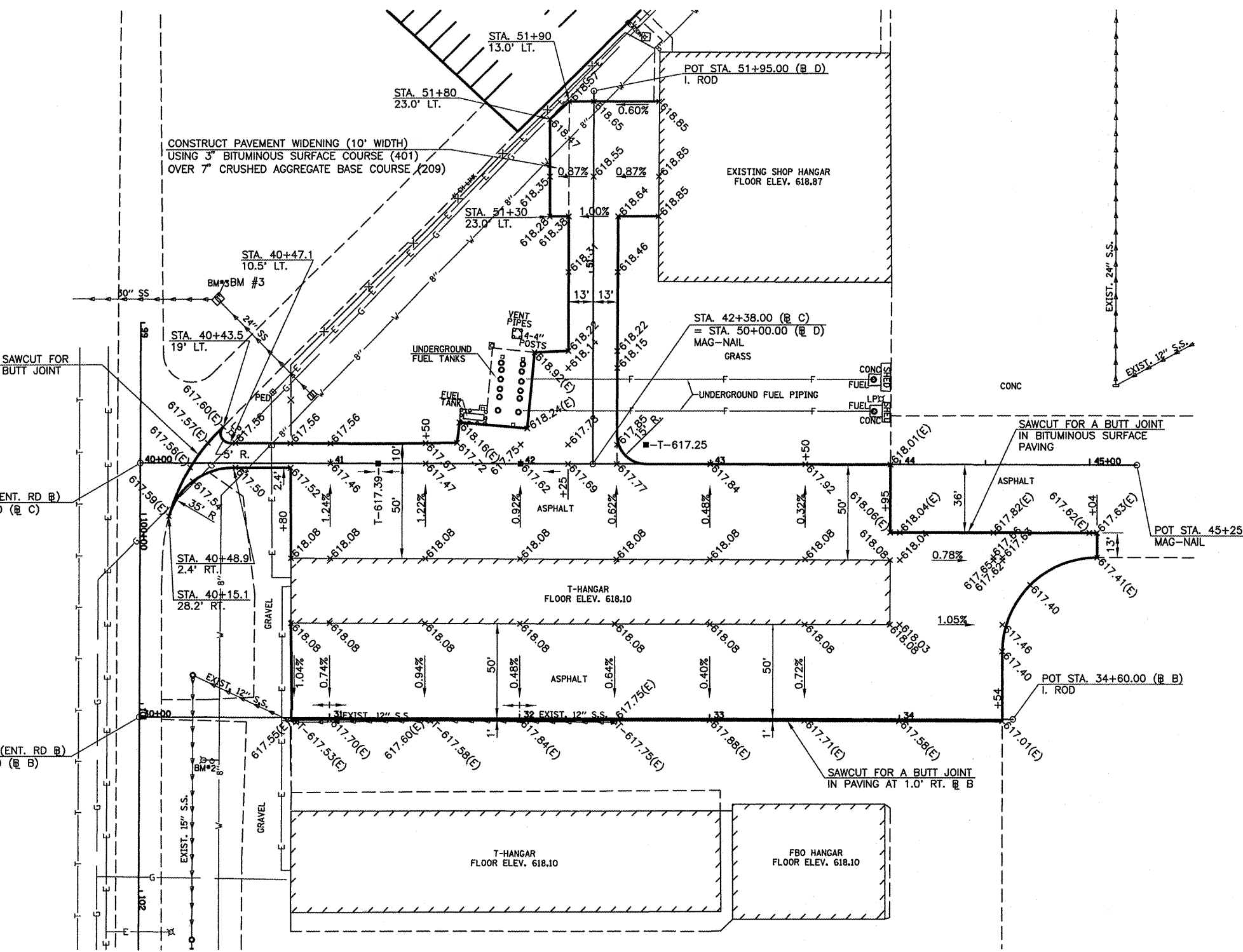
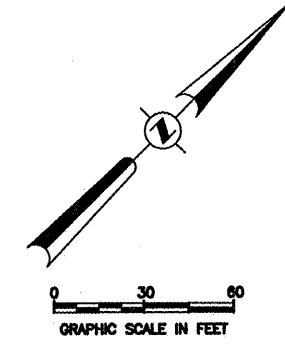
JACKSONVILLE MUNICIPAL AIRPORT JACKSONVILLE, ILLINOIS	
<b>TYPICAL SECTIONS AND STORM SEWER DETAILS</b>	
HUTCHISON ENGINEERING, INC. JACKSONVILLE, ILLINOIS	
DRAWN BY: T.J.D. DATE: MARCH, 2009	ILL. PROJ. NO. LX-3866 AIP PROJ. NO. 3-17-0054-813



- B.M. #1 - CHISELED "□" ON MIDDLE OF HDWL. FOR 60" RCP  
31' RT. STA. 105+34  
ELEV. 616.18
- B.M. #2 - CHISELED "X" ON FLANGE BOLT OF FIRE HYDRANT AT 34' LT. STA. 101+30  
ELEV. 618.90
- B.M. #3 - CHISELED "□" ON N.W. CORNER OF INLET 40" LT. STA. 98+88  
ELEV. 615.87

- NOTES**
1. IN AREAS WHERE STORM SEWER IS INSTALLED UNDER PAVEMENT, THE TRENCH SHALL BE BACKFILLED WITH COMPACTED GRANULAR MATERIAL THE FULL DEPTH OF THE TRENCH UP TO THE SUBGRADE FOR THE PAVEMENT COURSES. THE COST OF THE TRENCH BACKFILL SHALL BE CONSIDERED INCIDENTAL TO THE STORM SEWER.
  2. ALL STORM SEWER FOR THIS PROJECT SHALL BE CLASS IV, WALL B REINFORCED CONCRETE PIPE WITH RUBBER GASKET JOINTS. THE RUBBER GASKET JOINTS SHALL MEET ASTM C443.

JACKSONVILLE MUNICIPAL AIRPORT JACKSONVILLE, ILLINOIS	
<b>STORM SEWER LAYOUT AND HANGAR PAVEMENT MILLING</b>	
HUTCHISON ENGINEERING, INC. JACKSONVILLE, ILLINOIS	
DRAWN BY: T.J.D. DATE: MARCH, 2009	ILL. PROJ. NO. IJX-3866 AIP PROJ. NO. 3-17-0054-B13



**GENERAL NOTES**

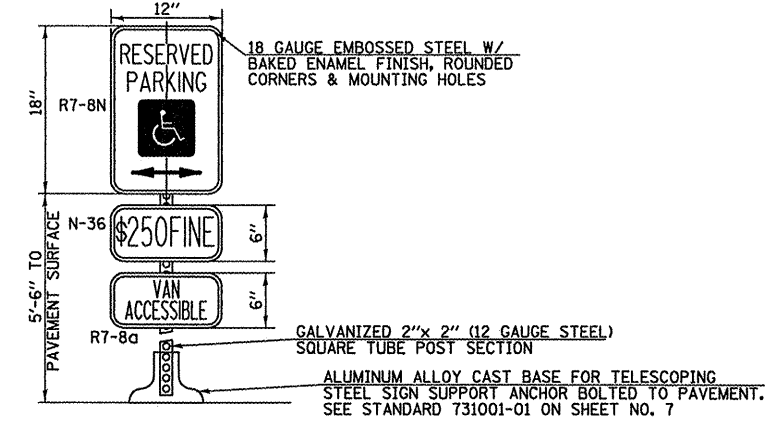
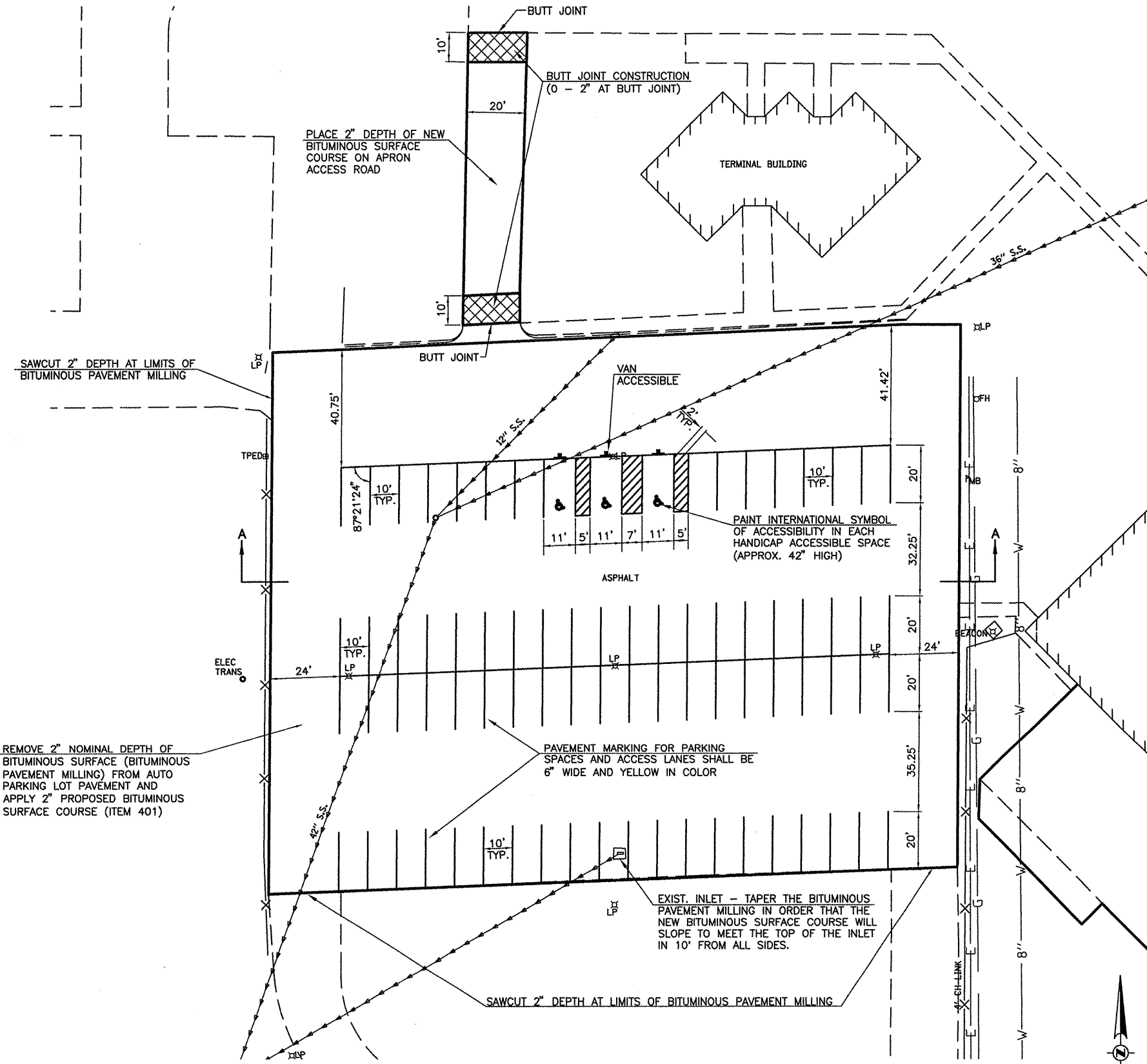
- ELEVATIONS SHOWN ARE TOP OF FINISHED SURFACE ELEVATIONS. (E) SHOWN AFTER AN ELEVATION DENOTES AN EXISTING ELEVATION.
- WHERE PROPOSED BITUMINOUS SURFACE ABUTS EXISTING PAVEMENT, THE EXISTING PAVEMENT SHALL BE CUT TO PRODUCE A STRAIGHT VERTICAL FACE TO ABUT THE PROPOSED SURFACE TO. PRIOR TO SURFACING, THE VERTICAL FACES OF ALL ABUTTING EXISTING PAVEMENT SHALL BE PAINTED WITH LIQUID ASPHALT. COST OF THIS WORK SHALL BE CONSIDERED INCIDENTAL TO THE CONTRACT.
- THE EXISTING BITUMINOUS SURFACE SHALL BE REMOVED AND THE EXISTING AGGREGATE BASE SHALL BE BLADED AND SHAPED AS REQUIRED TO PROVIDE FOR THE APPLICATION OF A 3" THICKNESS OF PROPOSED BITUMINOUS SURFACE TO THE FINISHED ELEVATIONS SHOWN. THE COST OF REMOVAL OF THE EXISTING AGGREGATE BASE MATERIAL, WHERE NECESSARY, SHALL BE CONSIDERED INCIDENTAL TO AGGREGATE BASE PREPARATION.
- ALL REMOVED BITUMINOUS SURFACE MATERIAL AND BLADED/REMOVED AGGREGATE BASE MATERIAL SHALL BE DISPOSED OF BY THE CONTRACTOR OFF THE AIRPORT SITE AT AN APPROVED SITE PROVIDED BY THE CONTRACTOR. THE COST OF THIS DISPOSAL SHALL BE INCLUDED IN THE COST OF THE AGGREGATE BASE PREPARATION AND THE COST TO REMOVE BITUMINOUS SURFACE COURSE.
- IN LOCATIONS WHERE UNSTABLE EXISTING AGGREGATE BASE COURSE IS ENCOUNTERED REQUIRING REPAIR OF THE BASE, THE AREAS DESIGNATED BY THE RESIDENT ENGINEER SHALL BE EXCAVATED AND THE REMOVED MATERIAL DISPOSED OF. THE AREAS SHALL BE REPLACED WITH A SEVEN (7) INCH DEPTH OF NEW AGGREGATE BASE MATERIAL MEETING THE REQUIREMENTS OF ITEM 209. THE COST OF THE REMOVAL AND DISPOSAL OF THE EXISTING BASE SHALL BE CONSIDERED INCIDENTAL TO AGGREGATE BASE PREPARATION. FURNISHING, PLACING AND COMPACTING NEW BASE MATERIAL SHALL BE PAID FOR AT THE UNIT PRICE BID FOR CRUSHED AGGREGATE BASE COURSE.
- THE QUANTITY FOR CRUSHED AGGREGATE BASE COURSE THAT IS INCLUDED IN THESE CONSTRUCTION PLANS IS ESTIMATED IN ORDER TO ESTABLISH A WORK ITEM BID PRICE. THE QUANTITY WILL BE ADJUSTED BY THE RESIDENT ENGINEER DURING CONSTRUCTION BASED UPON FIELD INSPECTION AND IDENTIFICATION OF LOCATIONS REQUIRING REPAIR OF THE EXISTING AGGREGATE BASE. THE RIGHT IS RESERVED TO INCREASE, DECREASE OR ELIMINATE THE QUANTITY FOR CRUSHED AGGREGATE BASE COURSE WITH NO UNIT PRICE ADJUSTMENT FOR THE ALTERED CONTRACT ITEM BEING ALLOWED.
- THE CONTRACTOR SHALL EXERCISE CAUTION DURING CONSTRUCTION OPERATIONS SO AS NOT TO DAMAGE THE EXISTING HANGAR BUILDINGS. ANY DAMAGE TO THE BUILDINGS SHALL BE REPAIRED BY THE CONTRACTOR AT HIS OWN EXPENSE TO THE SATISFACTION OF THE ENGINEER AND THE AIRPORT MANAGER.
- THE CONTRACTOR SHALL, AT HIS OPTION, EITHER WORK AROUND THE EXISTING FENCE DURING HIS PAVEMENT CONSTRUCTION OPERATIONS OR REMOVE THE EXISTING FENCE MATERIAL AS NECESSARY AND REINSTALL THE REMOVED FENCE MATERIAL AT THE COMPLETION OF WORK. THIS FENCE WORK SHALL BE CONSIDERED INCIDENTAL TO THE CONTRACT.

- B.M. #1 - CHISELED "□" ON MIDDLE OF HDWL FOR 60" RCP 31' RT. STA. 105+34 ELEV. 616.18
- B.M. #2 - CHISELED "X" ON FLANGE BOLT OF FIRE HYDRANT AT 34' LT. STA. 101+30 ELEV. 618.90
- B.M. #3 - CHISELED "□" ON N.W. CORNER OF INLET 40' LT. STA. 98+88 ELEV. 615.87

**UNCLASSIFIED EXCAVATION**  
 RT. STA. 50+00 TO STA. 50+15 = 3 CU. YD.  
 LT. STA. 51+30 TO STA. 51+90 = 17 CU. YD.  
 TOTAL = 20 CU. YD.

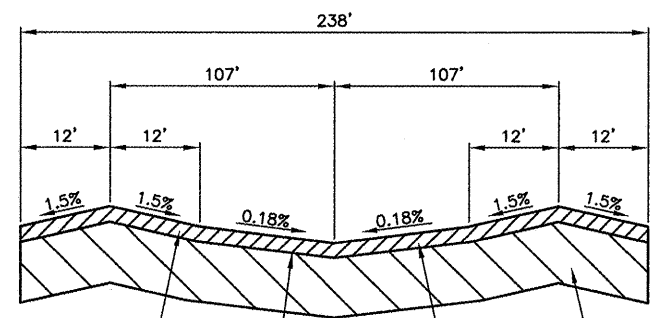
**SEEDING NOTES**  
 IT IS ESTIMATED THAT A 5' WIDTH OF TURF AREA ADJACENT TO THE FINISHED PAVEMENT EDGES WILL BE DISTURBED DURING CONSTRUCTION. THE STORM SEWER TRENCH OUTSIDE THE PAVEMENT WILL ALSO DISTURB THE TURF. THESE AREAS SHALL BE LIMED, FERTILIZED, SEEDED AND MULCHED AND SHALL CONSTITUTE THE AREAS DESIGNATED FOR PAYMENT.  
 ALL OTHER AREAS DISTURBED BY THE CONTRACTOR INCLUDING THE CONTRACTOR'S PARKING AREA SHALL BE REGRADED AND RESEDED AND/OR RESTORED TO THEIR ORIGINAL CONDITION BY THE CONTRACTOR AT HIS OWN EXPENSE UPON COMPLETION OF THE IMPROVEMENTS.  
 A QUANTITY OF 0.1 AC. CONSTITUTES THE AREA FOR PAYMENT.

JACKSONVILLE MUNICIPAL AIRPORT JACKSONVILLE, ILLINOIS	
<b>T-HANGAR PAVEMENT ELEVATIONS AND GRADING LAYOUT</b>	
HUTCHISON ENGINEERING, INC. JACKSONVILLE, ILLINOIS	
DRAWN BY: T.J.D. DATE: MARCH, 2009	ILL. PROJ. NO. LX-3886 AIP PROJ. NO. 3-17-0054-813



NOTE : FURNISHING AND MOUNTING THE VAN ACCESSIBLE SIGN ON ONE OF THE POSTS SHALL BE CONSIDERED INCIDENTAL TO AR910230 HANDICAP SIGN.

**HANDICAP ACCESSIBLE PARKING SIGN DETAIL**  
NOT TO SCALE



PROPOSED BITUMINOUS TACK COAT (ITEM 603) APPLIED TO MILLED PAVEMENT SURFACE (0.10 GAL./S.Y. DILUTED—SEE SPECIAL PROVISIONS)

EXISTING PAVEMENT 5"± BITUMINOUS SURFACE OVER 5" BITUMINOUS BASE

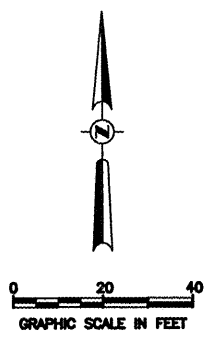
REMOVE 2" NOMINAL DEPTH OF BITUMINOUS SURFACE (BITUMINOUS PAVEMENT MILLING)

PROPOSED BITUMINOUS SURFACE COURSE (ITEM 401) 2" MINIMUM THICKNESS - SINGLE LIFT

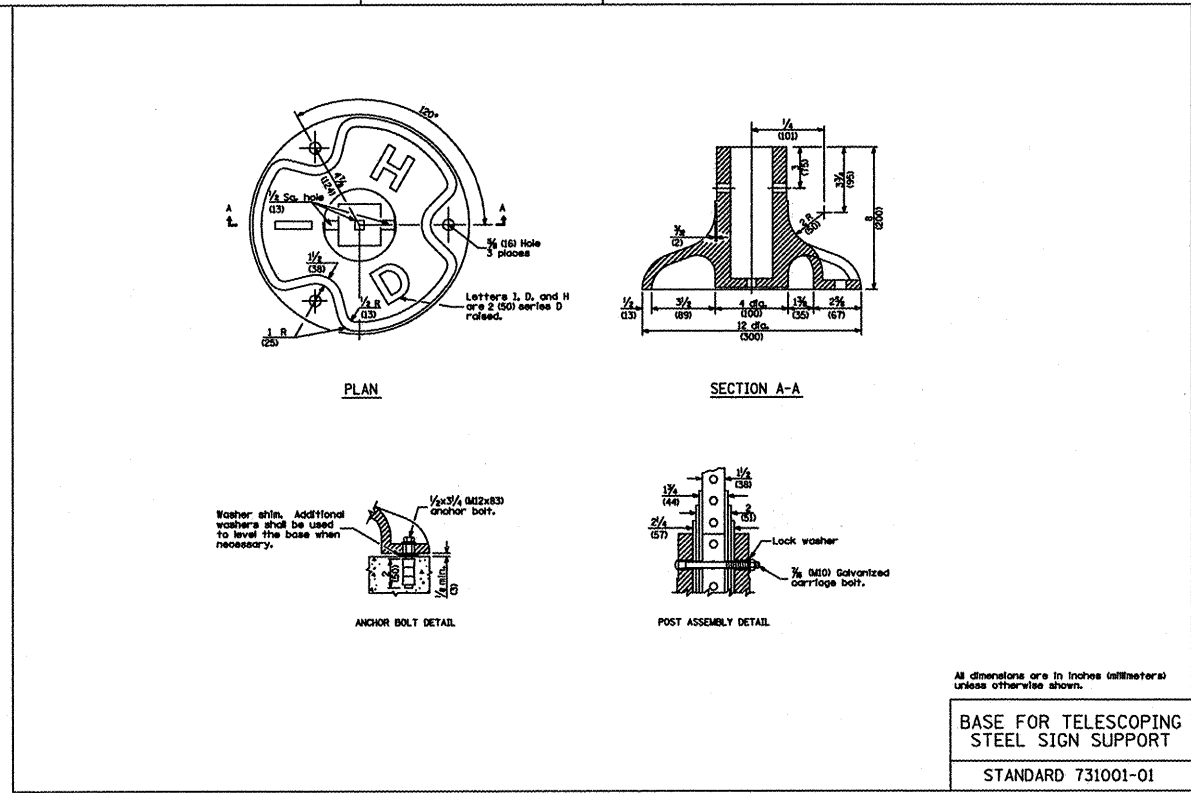
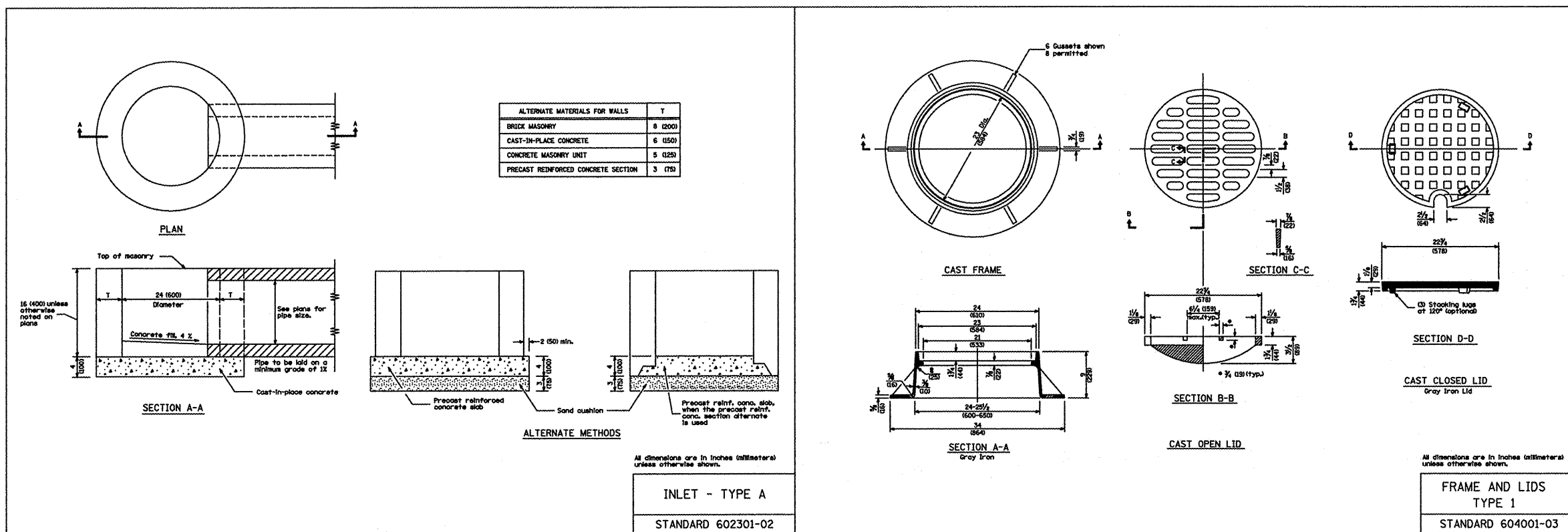
**TYPICAL SECTION A-A**  
PARKING LOT PAVEMENT

- LEGEND**
- ⊗ EXISTING AREA LIGHT POLES
  - ⊖ EXISTING INLET
  - EXISTING MANHOLE
  - EXISTING FENCE
  - PROPOSED HANDICAP ACCESSIBLE PARKING SIGN

NOTE : OPEN PAVING JOINTS AND/OR CRACKS EXISTING IN THE PAVEMENT AFTER THE BITUMINOUS PAVEMENT MILLING OPERATION SHALL BE DESIGNATED BY THE RESIDENT ENGINEER IN THE FIELD TO BE REPAIRED PRIOR TO PLACING THE BITUMINOUS SURFACE COURSE. THIS WORK SHALL BE PERFORMED ON CRACKS OVER 3/8" IN WIDTH IN ACCORDANCE WITH THE SPECIAL PROVISION FOR BITUMINOUS CRACK REPAIR.



JACKSONVILLE MUNICIPAL AIRPORT JACKSONVILLE, ILLINOIS	
<b>PARKING LOT PLAN LAYOUT AND PAVEMENT MARKING</b>	
HUTCHISON ENGINEERING, INC. JACKSONVILLE, ILLINOIS	
DRAWN BY: T.J.D.	ILL. PROJ. NO. UX-3866
DATE : MARCH, 2009	AIP PROJ. NO. 3-17-0054-B13



JACKSONVILLE MUNICIPAL AIRPORT JACKSONVILLE, ILLINOIS	
<b>STANDARD DRAWINGS</b>	
HUTCHISON ENGINEERING, INC. JACKSONVILLE, ILLINOIS	
DRAWN BY: T.J.D.	ILL. PROJ. NO. LX-3866
DATE: MARCH, 2009	AIP PROJ. NO. J-17-0054-B13