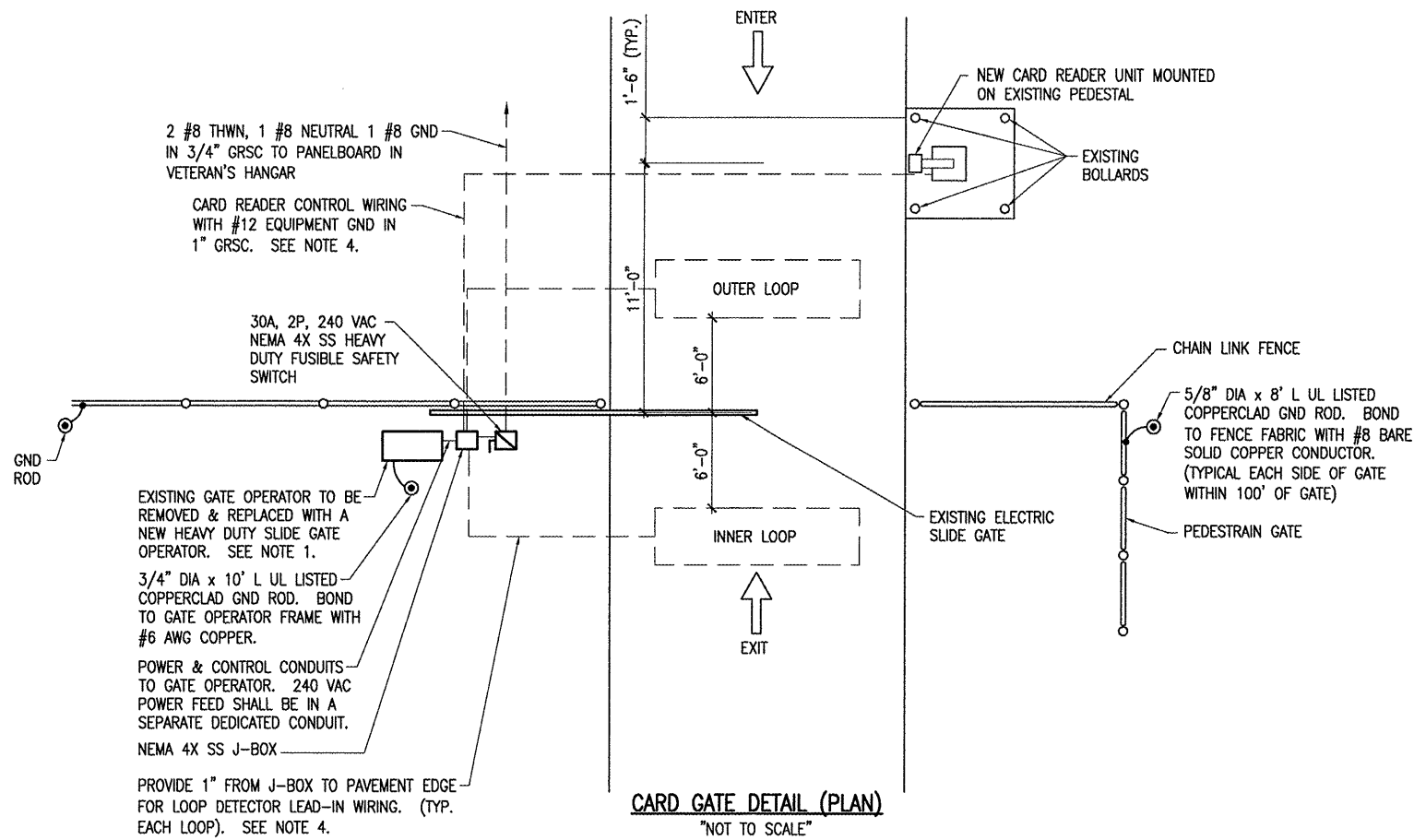
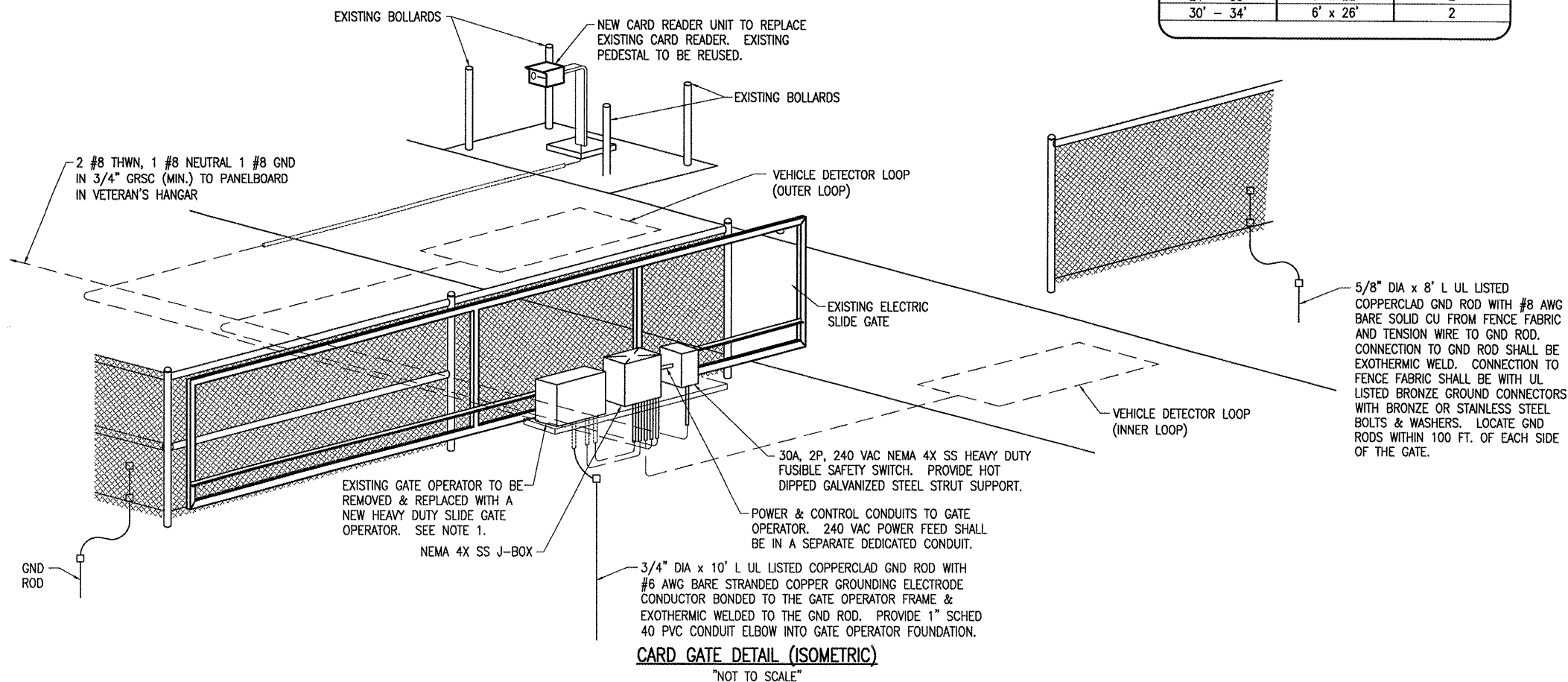


NOTES:

- SEE SPECIAL PROVISION SPECIFICATIONS FOR REQUIREMENTS ON RESPECTIVE GATE & GATE OPERATOR SYSTEMS
- ALL DIMENSIONS AND LAYOUT INFORMATION SHOWN SHOULD BE ADJUSTED AS RECOMMENDED BY THE MANUFACTURER.
- CONCRETE FOUNDATIONS SHALL BE PROVIDED FOR THE SLIDE GATE OPERATOR AND THE CARD READER CONTROL UNIT. FOUNDATION FOR THE GATE OPERATOR SHALL BE 48" (MIN.) IN DEPTH AND OF THE SIZE RECOMMENDED BY THE MANUFACTURER PLUS MOUNTING SPACE FOR SAFETY SWITCH & J-BOX. FOUNDATION FOR THE CARD READER ACCESS CONTROL UNIT SHALL BE 48" (MIN.) IN DEPTH, AS DETAILED HEREIN.
- 1" GRS CONDUIT WILL BE REQUIRED BETWEEN THE SLIDE GATE OPERATOR AND THE CARD READER ACCESS CONTROL UNIT AND BETWEEN THE SLIDE GATE OPERATOR AND THE DETECTOR LOOPS. THE MINIMUM BURYING DEPTH IS 24". ALL METAL CONDUITS ENTERING THE GATE OPERATOR SHALL BE BONDED TO THE GATE OPERATOR FRAME WITH A #8 AWG (MIN.) COPPER BONDING JUMPER. CONFIRM CONTROL WIRING REQUIREMENTS WITH THE RESPECTIVE GATE OPERATOR SALES AND SERVICE REPRESENTATIVE. WHERE AVAILABLE EXISTING CONDUIT MAY BE REUSED IN PLACE. FIELD VERIFY EXISTING SITE CONDITIONS.
- GUARD/BOLLARD POSTS AROUND CARD READER ARE EXISTING AND SHALL REMAIN IN PLACE.
- THE EXISTING GATE OPERATOR, CARD READER, & DETECTOR LOOPS SHALL BE REPLACED WITH A NEW GATE OPERATOR, CARD READER, & DETECTOR LOOPS. EXISTING SLIDE GATE SHALL REMAIN & BE USED WITH THE NEW GATE OPERATOR.
- AS PART OF THIS ITEM 75 CARDS AND 25 REMOTE TRANSMITTERS FOR EACH GATE SHALL BE PROVIDED BY THE CONTRACTOR. COORDINATE PROGRAMMING OF CARDS & TRANSMITTER FREQUENCIES WITH THE AIRPORT MANAGER.
- CONTRACTOR SHALL COORDINATE ANY POWER OUTAGES TO EXISTING EQUIPMENT WITH THE RESPECTIVE OWNER'S REPRESENTATIVE AND THE AIRPORT MANAGER.
- INCLUDE UL LISTED SECONDARY SURGE ARRESTER FOR THE GATE OPERATOR SUITABLE FOR USE ON 240 VAC, 1 PHASE, 2 WIRE PLUS GROUND SYSTEM, WITH SURGE CURRENT RATING OF 100 KA PER MODE, LIFETIME PRODUCT REPLACEMENT WARRANTY, DITEK MODEL DTK-120/240 CM PLUS OR EQUAL.
- CONCRETE USED FOR INSTALLING THE GATE OPERATOR & FENCE SHALL MEET THE REQUIREMENTS OF STRUCTURAL PORTLAND CEMENT CONCRETE ITEM AR610.
- ALL ELECTRICAL EQUIPMENT SHALL BE INSTALLED IN CONFORMANCE WITH NFPA 70 - NATIONAL ELECTRICAL CODE (NEC) MOST CURRENT ISSUE IN FORCE, THE RESPECTIVE EQUIPMENT MANUFACTURER'S DIRECTIONS AND ALL OTHER APPLICABLE LOCAL CODES, LAWS, ORDINANCES, AND REQUIREMENTS IN FORCE. ANY INSTALLATIONS WHICH VOID THE UL LISTING, ETL LISTING, (OR OTHER THIRD PARTY LISTING) AND/OR THE MANUFACTURER'S WARRANTY OF A DEVICE WILL NOT BE PERMITTED.
- PROVIDE A WEATHERPROOF ENGRAVED PHENOLIC OR PLASTIC LEGEND PLATE FOR THE SAFETY SWITCH AT THE RESPECTIVE GATE OPERATOR NOTING THE GATE SERVED, VOLTAGE, AND RESPECTIVE POWER SOURCE CIRCUIT AND LOCATION.
- PAYMENT FOR REPLACING THE GATE OPERATOR, CARD READER, AND ALL ASSOCIATED CONTROL & SAFETY DEVICES SHALL BE ON A LUMP SUM BASIS AND SHALL BE FULL COMPENSATION FOR ALL MATERIALS, EQUIPMENT, LABOR, TOOLS, COORDINATION, TESTING, AND INCIDENTALS REQUIRED TO PLACE THE GATE COMPLETE AND IN OPERATING CONDITION.
- CONTROL CIRCUIT WIRING SHALL NOT BE ROUTED THROUGH THE SAFETY SWITCH/DISCONNECT.
- LOCATE RECEIVER ANTENNA TO PROVIDE PROPER OPERATION FROM REMOTE TRANSMITTERS FROM A DISTANCE UP TO 150 FEET. INCLUDE CONDUITS & SUPPORT HARDWARE.
- ALL CONTROL POWER TRANSFORMERS, POWER SUPPLIES, RECEPTACLES, LOOP DETECTOR AMPLIFIERS, SECONDARY SAFETY DEVICE EQUIPMENT, AND ANY OTHER ASSOCIATED CONTROLS SHALL BE INSTALLED EITHER INSIDE THE GATE OPERATOR CONTROL PANEL OR INSIDE A SEPARATE NEMA 4 STAINLESS STEEL CONTROL PANEL ENCLOSURE. WHERE THE CONTROL EQUIPMENT IS TO BE INSTALLED INSIDE THE GATE OPERATOR CONTROL PANEL THE CONTRACTOR SHALL COORDINATE THIS WITH THE GATE OPERATOR MANUFACTURER AND THE RESPECTIVE GATE OPERATOR EQUIPMENT SUPPLIER. LOCATING THESE CONTROLS OUTSIDE OF GATE OPERATOR CONTROL PANEL BUT WITHIN THE GATE OPERATOR HOUSING WILL NOT MEET THIS REQUIREMENT.



VEHICLE DETECTOR LOOPS		
GATE SIZE	LOOP SIZE	No. OF TURNS
8' - 12'	4' x 6'	3
12' - 16'	4' x 10'	2
16' - 20'	4' x 14'	2
20' - 24'	4' x 18'	2
24' - 30'	6' x 22'	2
30' - 34'	6' x 26'	2



MAR 25, 2009 1:03 PM VOORH0805 I:\AIRPORTS\LAWRENCE\08A0185\CADD\AIRPORT\SHEET\E-503.DWG - DETAILS

DATE	REVISION	BY

MID-AMERICAN AIR CENTER
LAWRENCEVILLE-VINCENNES AIRPORT
LAWRENCEVILLE, ILLINOIS

IL PROJ.: LW-3869 A.I.P. PROJ.: 3-17-0061-B15

Hanson Project No. 08A0185D_0800	File Name E-503.DWG	Scale N/A	Date 01/20/09
LAYOUT	KNL	01/06/09	01/07/09
DRAWN	MV	01/07/09	01/09/09
REVIEWED	JSL	01/09/09	

HANSON
Hanson Professional Services Inc.
1525 South Sixth Street
Springfield, Illinois 62703-2886
Offices Nationwide

FRONTAL AREA
FENCE INSTALLATION

PROPOSED GATE
OPERATOR DETAILS -
TERMINAL GATE