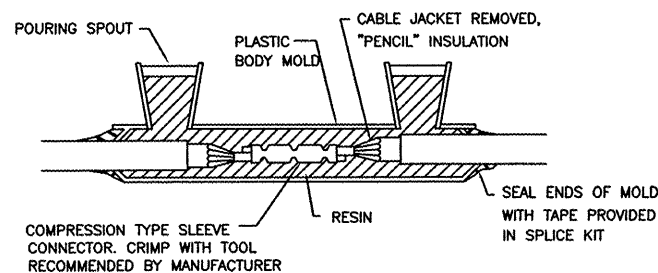
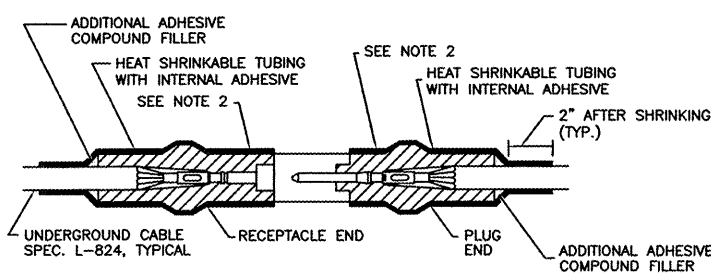


- NOTES:**
- 1.) CABLE MARKERS SHALL BE INSTALLED AT ALL BENDS AND EVERY 200' ALONG THE CABLE RUN.
 - 2.) ITEM 610 CONCRETE SHALL BE USED.
 - 3.) ALL EXPOSED EDGES SHALL BE EDGED WITH A 1/4" RADIUS TOOL.
 - 4.) THE COST OF FURNISHING AND INSTALLING NEW MARKERS SHALL BE INCIDENTAL TO THE ASSOCIATED CABLE ITEMS.
 - 5.) 0.049 CU. YD. CONCRETE PER MARKER.

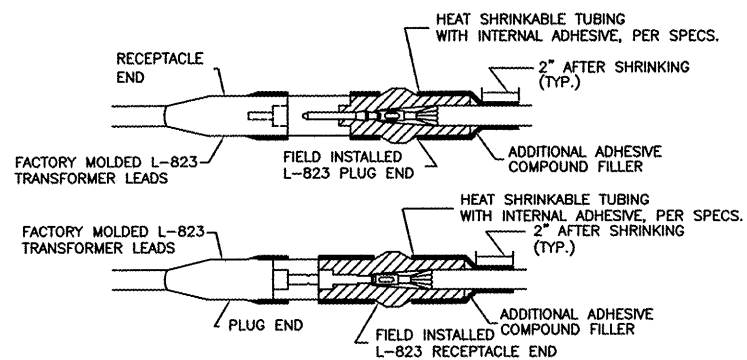
TURF CABLE MARKER DETAIL
NOT TO SCALE



TYPE A - CABLE SPLICE
FOR SPLICES IN HOMERUNS AND FOR EXTENSIONS TO EXISTING CABLES ONLY
N.T.S.

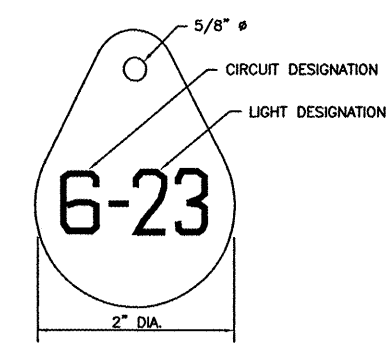


TYPE B - CABLE SPLICE
FOR SPLICES FOR USE AT JUNCTION OF HOMERUN WITH LOOP CIRCUIT
N.T.S.



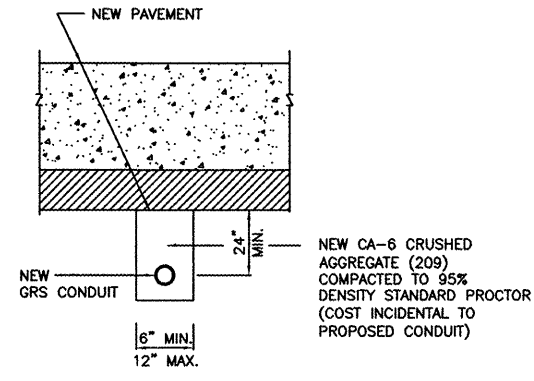
TYPE C AND D - CABLE SPLICE
FOR SPLICES AT RUNWAY/TAXIWAY LIGHTS AND SIGNS
N.T.S.

- NOTES:**
1. INSIDE DIAMETER OF CONNECTOR SHALL PROPERLY MATCH THE OUTSIDE DIAMETER OF CABLE.
 2. WRAP WITH AT LEAST ONE LAYER OF RUBBER OR SYNTHETIC RUBBER TAPE AND ONE LAYER OF PLASTIC TAPE, ONE-HALF LAPPED, EXTENDING AT LEAST 1-1/2 INCHES ON EACH SIDE OF JOINT.
 3. THE COST OF FURNISHING AND INSTALLING ALL SPLICE MATERIALS SHALL BE INCIDENTAL TO THE ASSOCIATED CABLE ITEMS.
 4. THE CONTRACTOR SHALL HAVE A MINIMUM OF TWO (2) TYPE A SPLICE KITS ON THE JOB SITE AT ALL TIMES FOR EMERGENCY REPAIRS.



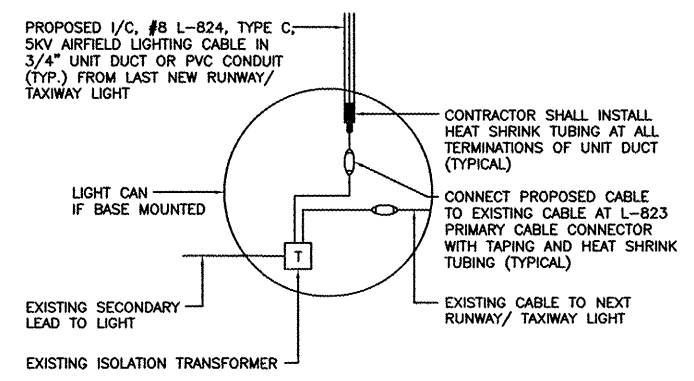
LIGHT IDENTIFICATION DETAIL
NOT TO SCALE

- NOTES:**
1. INSTALL A NONCORROSIVE DISC OF 2" MINIMUM DIAMETER WITH THE NUMBER PERMANENTLY STAMPED, CUT OUT, OR ENGRAVED UNDER THE HEAD OF THE BASE PLATE BOLT OR ATTACHED TO LIGHT FLANGE WITH A SET SCREW.
 2. NUMERALS SHOWN ARE FOR ILLUSTRATIVE PURPOSES ONLY. ALL EXISTING AND PROPOSED TAXIWAY AND RUNWAY LIGHTS SHALL BE TAGGED AS DIRECTED BY THE RESIDENT ENGINEER. ALL LIGHTS ON EXISTING CIRCUITS THAT HAVE LIGHTING IMPROVEMENTS (NEW OR RELOCATED LIGHTS) SHALL BE RETAGGED.
 3. COST OF TAGGING LIGHTS SHALL NOT BE PAID FOR SEPARATELY BUT SHALL BE CONSIDERED INCIDENTAL TO THE CONTRACT.



GRS CONDUIT UNDER P.C.C. PAVEMENT DETAIL
NOT TO SCALE

NEW DUCT BANK/CONDUIT SHALL BE INSTALLED AT AN ELEVATION THAT WILL NOT CONFLICT WITH EXISTING OR NEW UTILITIES INCLUDING STORM SEWER, UNDERDRAIN, CONDUIT, GAS, WATERMAIN, PHONE, ELECTRICAL AT NO ADDITIONAL COST TO THE CONTRACT.



RUNWAY/TAXIWAY LIGHTING CIRCUIT CONNECTION DETAIL
NOT TO SCALE

RO016



Chicago Rockford International Airport



Rockford, Illinois

Greater Rockford Airport Authority

AIP: 3-17-0088-XX RFD-3862

Rehab. Txy B South (Phase 1)

Revisions

Date	Description

THIS BAR IS EQUAL TO 1" AT FULL SCALE (17 X 11).

DESIGN BY: CMT-RFD
DRAWN BY: CMT-RFD
CHECKED BY: CMT-RFD
APPROVED BY: JGP
DATE: 1-23-2009
JOB No: 06258-04-00

ELECTRICAL DETAILS - 3 (ELD3)

30

SHEET 30 OF 52 SHEETS