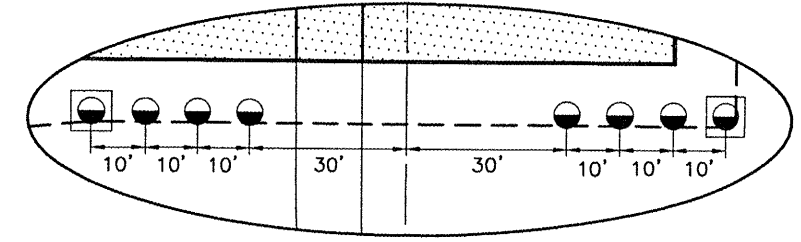


QUANTITIES THIS SHEET			
ITEM NO.	DESCRIPTION	UNIT	QUANTITY
AR108158	1/C #8 5KV UG CABLE IN UD	L.F.	3,723
AR109210	VAULT MODIFICATIONS	L.S.	1
AR110502	2-WAY CONCRETE ENCASED DUCT	L.F.	56
AR125410	MITL - STAKE MOUNTED	EACH	23
AR125415	MITL - BASE MOUNTED	EACH	3
AR125443	TAXI GUIDANCE SIGN 3 CHARACTER	EACH	2
AR125444	TAXI GUIDANCE SIGN 4 CHARACTER	EACH	3
AR125505	MIRL, STAKE MOUNTED	EACH	2
AR125540	MI THRESHOLD LIGHT STAKE MOUNTED	EACH	6
AR125545	MI THRESHOLD LIGHT BASE MOUNTED	EACH	2

THE LOCATION, SIZE AND TYPE OF MATERIAL OF EXISTING UNDERGROUND UTILITIES INDICATED ON THE PLANS IS NOT REPRESENTED AS BEING ACCURATE, SUFFICIENT OR COMPLETE. IT SHALL BE THE CONTRACTOR'S RESPONSIBILITY TO DETERMINE THE ACTUAL LOCATION OF ALL SUCH FACILITIES, INCLUDING SERVICE CONNECTIONS TO UNDERGROUND UTILITIES. PRIOR TO CONSTRUCTION, THE CONTRACTOR SHALL NOTIFY THE UTILITY COMPANIES OF HIS OPERATIONAL PLANS AND SHALL OBTAIN FROM THE RESPECTIVE UTILITY COMPANIES DETAILED INFORMATION AND ASSISTANCE RELATIVE TO THE LOCATION OF THEIR FACILITIES AND THE WORKING SCHEDULE OF THE COMPANIES FOR REMOVAL OR ADJUSTMENT WHERE REQUIRED. IN THE EVENT AN UNEXPECTED UTILITY INTERFERENCE IS ENCOUNTERED DURING CONSTRUCTION, THE CONTRACTOR SHALL IMMEDIATELY NOTIFY THE UTILITY COMPANY OF JURISDICTION. THE ENGINEER SHALL ALSO BE IMMEDIATELY NOTIFIED. ANY SUCH MAINS AND SERVICES SHALL BE RESTORED TO SERVICE AT ONCE AND PAID FOR BY THE CONTRACTOR AT NO ADDITIONAL COST TO THE CONTRACT.

CALL J.U.L.I.E. FOR UTILITY INFORMATION AT 1-800-892-0123.

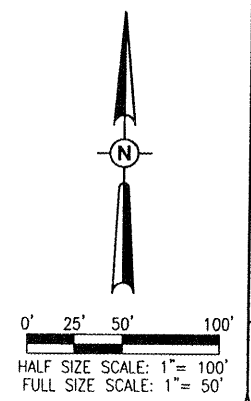


PROPOSED RUNWAY END 35 THRESHOLD LIGHT DETAIL
 "NOT TO SCALE"

ELECTRICAL NOTES

THE PROPOSED LIGHTS BEING INSTALLED AT RUNWAY STA. 59+62 WILL BE EQUIPPED WITH 180° CLEAR/180° AMBER LENSES. THE AMBER SIDE WILL FACE TOWARD THE NORTH. ANY EXISTING RUNWAY LIGHT THAT HAS A SPLIT AMBER/CLEAR LENSE AND IS LOCATED FURTHER THAN 2000 FEET FROM THE PROPOSED END OF RUNWAY 35 WILL HAVE THEIR SPLIT LENSE REPLACED WITH A 360° CLEAR LENSE. THE REPLACEMENT OF THESE TWO LENSES WILL BE CONSIDERED AS AN INCIDENTAL ITEM TO THE LIGHT REMOVAL AND NO ADDITIONAL COMPENSATION WILL BE ALLOWED.

- LEGEND**
- EXISTING IMPROVEMENTS
 - PROPOSED IMPROVEMENTS
 - EXISTING 1/C #8 5KV U.G. CABLE IN U.D.
 - PROPOSED 1/C #8 5KV U.G. CABLE IN U.D.
 - EXISTING ELECTRICAL DUCT
 - PROPOSED ELECTRICAL DUCT
 - EXISTING STAKE MOUNTED RUNWAY LIGHT
 - EXISTING STAKE MOUNTED TAXIWAY LIGHT
 - EXISTING BASE MOUNTED TAXIWAY LIGHT
 - EXISTING TAXI GUIDANCE SIGN
 - EXISTING ELECTRICAL DUCT MARKER
 - PROPOSED STAKE MOUNTED TAXIWAY LIGHT
 - PROPOSED BASE MOUNTED TAXIWAY LIGHT
 - PROPOSED STAKE MOUNTED RUNWAY THRESHOLD LIGHT
 - PROPOSED BASE MOUNTED RUNWAY THRESHOLD LIGHT
 - PROPOSED TAXI GUIDANCE SIGN
 - PROPOSED STAKE MOUNTED RUNWAY LIGHT



DATE	REVISION	BY

ST. LOUIS REGIONAL AIRPORT

 EAST ALTON, ILLINOIS
 A.I.P. PROJ.: ALN-3825
 I.L. PROJ.: ALN-3825-842

Project No. 83706RWYD.0800	CAH	02/11/08
Filename: R-142ELE.DWG	BAK	02/11/08
Scale: 1" = 50'	CAH	07/11/08
Date: 02/11/08		

HANSON

 Hanson Professional Services Inc.
 1525 South Sixth Street
 Springfield, Illinois 62702-2886
 Chicago, Illinois

RUNWAY SAFETY
 AREA IMPROVEMENTS
 PROPOSED
 ELECTRICAL PLAN
 FOR RUNWAY END 35