

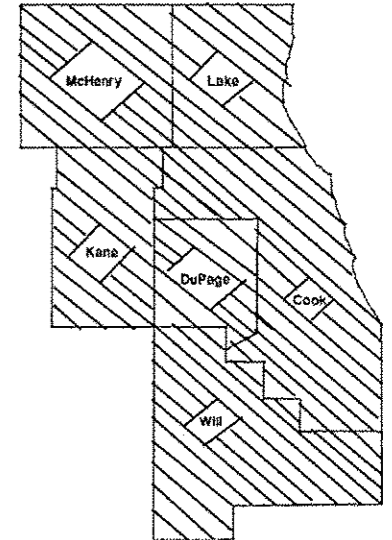
04-24-2015 LETTING ITEM 039

ROUTE	SECTION	COUNTY	TOTAL SHEETS	SHEET NUMBER
VARIOUS	2015-001 DTR	VARIOUS	7	1

CONTRACT 62A54
C-91-244-15

STATE OF ILLINOIS
DEPARTMENT OF TRANSPORTATION
DIVISION OF HIGHWAYS
DISTRICT ONE
PROPOSED HIGHWAY PLANS

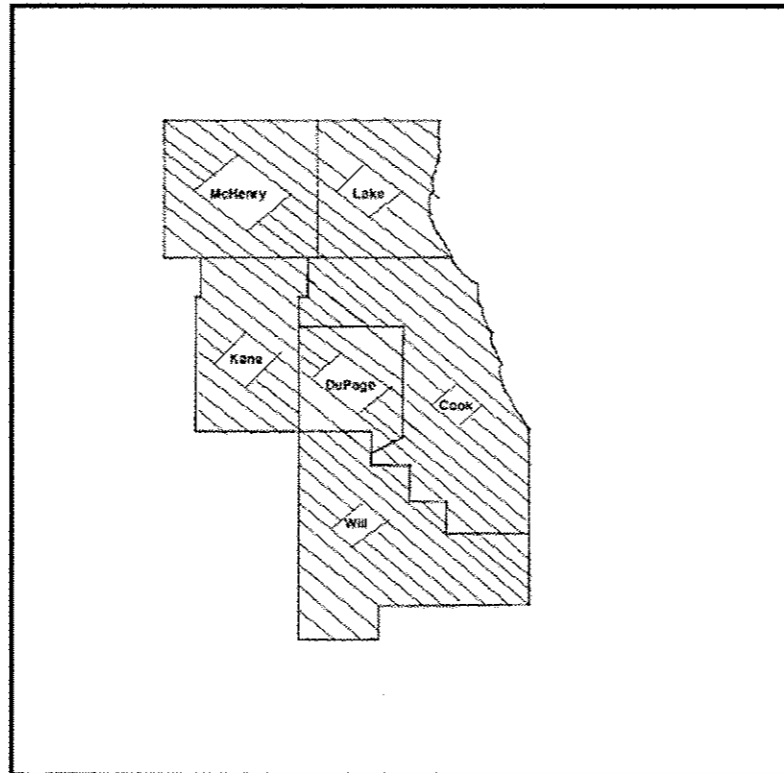
ROUTE: VARIOUS
SECTION 2015-001DTR
DEAD TREE REMOVAL
VARIOUS COUNTIES
C-91-244-15



LOCATION OF IMPROVEMENT INDICATED THUS:



**IMPROVEMENT IS IN VARIOUS
LOCATIONS WITHIN DISTRICT
ONE**



STATE OF ILLINOIS
DEPARTMENT OF TRANSPORTATION
DIVISION OF HIGHWAYS

SUBMITTED: February 6 2015

John F. [Signature]
DEPUTY DIRECTOR OF HIGHWAYS, REGION ENGINEER

March 20 2015
John D. Baranzelli, PE
ENGINEER OF DESIGN AND ENVIRONMENT

March 20 2015
Omer Osman, PE
DIRECTOR OF HIGHWAYS, CHIEF ENGINEER

**PRINTED BY THE AUTHORITY
OF THE STATE OF ILLINOIS**

J.U.L.I.E.: JOINT UTILITY LOCATION
INFORMATION FOR EXCAVATION
(800) 892-0123 OR 811

DISTRICT ONE BUREAU OF MAINTENANCE: J. STUMPNER
MAINTENANCE LANDSCAPE DESIGNER: V. NEWSOME (847) 705-4327

CONTRACT 62A54

ROUTE	SECTION	COUNTY	TOTAL SHEETS	SHEET NUMBER
VARIOUS	2015-001DTR	VARIOUS	7	2

CONTRACT 62A54

INDEX OF SHEETS

- 1) COVER SHEET
- 2) INDEX OF SHEETS, STATE STANDARDS, GENERAL NOTES
- 3) SUMMARY OF QUANTITIES
- 4) SAMPLE STANDARD WORK ORDER
- 5) SAMPLE EXPEDITED WORK ORDER
- 6) TC-10 TRAFFIC CONTROL AND PROTECTION FOR SIDE ROADS, INTERSECTIONS, AND DRIVEWAYS
- 7) TC-17 TRAFFIC CONTROL DETAIL FOR FREEWAY SHOULDER CLOSURES AND PARTIAL RAMP CLOSURES

STATE STANDARDS

701001-02	701006-05	701101-04	701106-02	701201-04
701301-04	701421-07	701501-06	701601-09	701901-04

GENERAL NOTES

TREE REMOVAL 6-15 & over 15 inches will not require removal of stumps.

ILLINOIS DEPARTMENT OF TRANSPORTATION

INDEX OF SHEETS

DEAD TREE REMOVAL

ROUTE	SECTION	COUNTY	TOTAL SHEETS	SHEET NUMBER
VARIOUS	2015-001 DTR	VARIOUS	7	3

CONTRACT 62A54

SUMMARY OF QUANTITIES


PAY ITEM	DESCRIPTION	UNIT	URBAN 0031		TOTAL
			Emerald Ash Borer	Dead Tree Removal	
20100110	TREE REMOVAL(6 TO 15 UNITS DIAMETER)	UNIT	0	15000	15000
20100210	TREEREMOVAL(OVER 15UNITS DIAMETER)	UNIT	11000	0	11000
20101300	TREE PRUNING (1 TO 10 INCH DIAMETER)	EACH	25	0	25
20101350	TREE PRUNING (OVER 10 INCH DIAMETER)	EACH	25	0	25
67100100	MOBILIZATION	L SUM	1	0	1
X0325222	WEED CONTROL, BASAL TREATMENT	GALLON	0	30	30
X2010100	TREE LIMB REMOVAL 4-10 INCHES	EACH	0	50	50
X2010200	TREE LIMB REMOVAL OVER 10 INCHES	EACH	0	50	50
X2010310	TREE REMOVAL SPECIAL	UNIT	0	1500	1500
X2010400	STUMP REMOVAL ONLY	UNIT	0	5000	5000
Z0064800	SELECTIVE CLEARING	UNIT	0	50	50

ILLINOIS DEPARTMENT OF TRANSPORTATION

SUMMARY OF QUANTITIES

DEAD TREE REMOVAL

ROUTE	SECTION	COUNTY	TOTAL SHEETS	SHEET NUMBER
VARIOUS	2015-001DTR	VARIOUS	7	5

 Illinois Department of Transportation	Tree Removal Work Order Number:
	ID Number:

CONTRACT 62A54

*****EXPEDITED REMOVAL*****

Date: _____ Time: _____ Contract: _____

County			Work Order Prepared By	Team Section

Marked Route: _____ Municipality: _____ Side of Road: _____
 Location: _____

Tree tape was used to measure the diameter of the trees.

PAY ITEM	TREE #	QUANTITY	24 HOUR	48 HOUR	TOTAL
LIMB REMOVAL (EACH)			3X	2.5X	
4"-10"					
X2010100			3X	2.5X	
LIMB REMOVAL (EACH)					
>10"					
X2010200			2X	1.5X	
TREE REMOVAL (UNITS)					
6"-15"					
20100110			2X	1.5X	
TREE REMOVAL (UNITS)					
>15"					
20100210					

Special Instructions _____

Reason for removal: _____

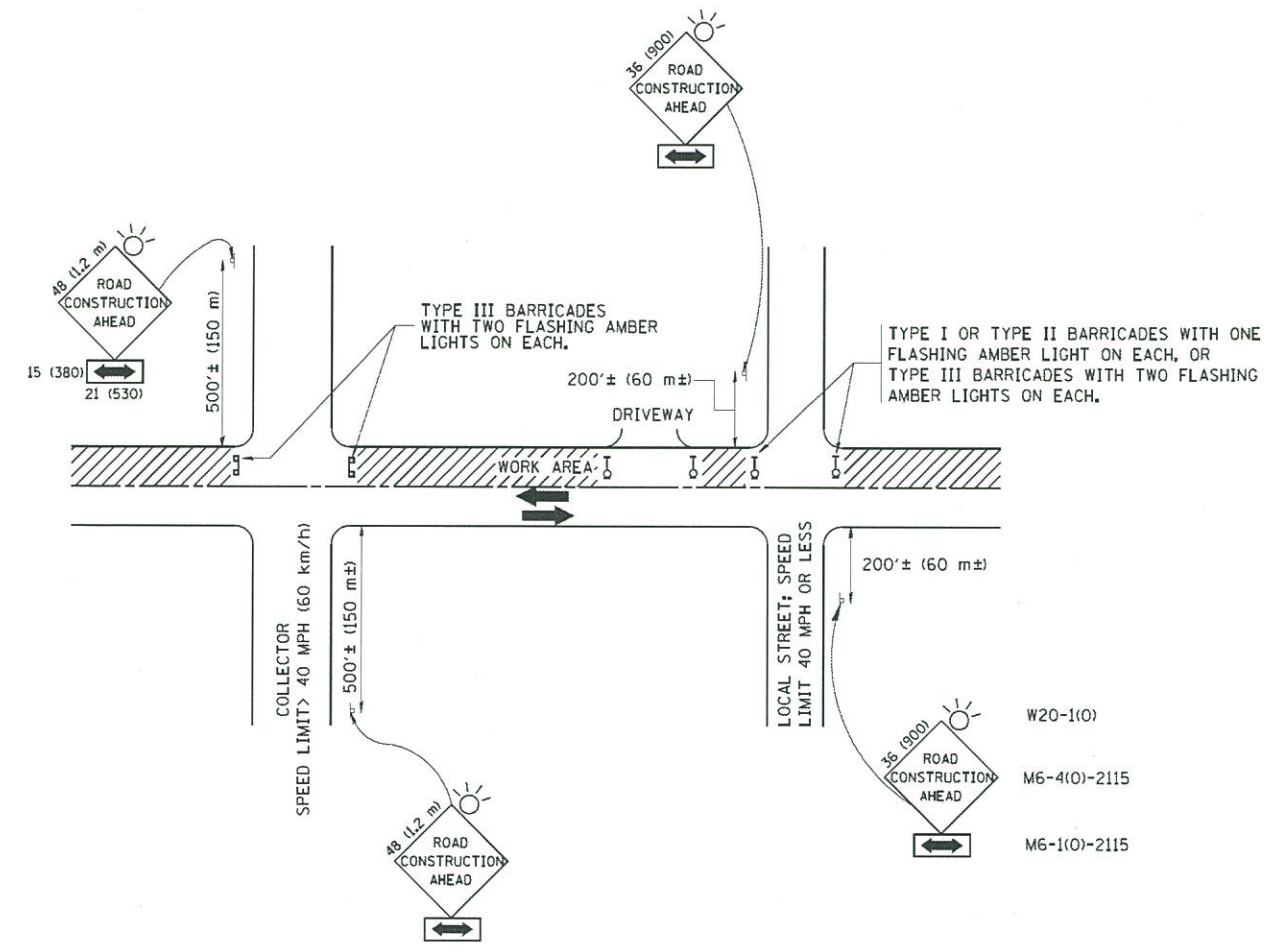
AUTHORIZATION OF WORK	
Resident Engineer/Technician Signature	
Date/Time work order issued	Contractor Initials

CERTIFICATION OF COMPLETED WORK	
Contractor Signature	
Date/Time work order completed	

OFFICE USE ONLY		
Measured in Place by:	Initials(s)	Date
Calculated by:	_____	_____
Checked by:	_____	_____

INSPECTION AND ACCEPTANCE OF COMPLETED WORK	
Inspector Signature	
Date work order Inspected and Accepted	
This is to certify that the work order has been completed.	

ILLINOIS DEPARTMENT OF TRANSPORTATION
 SAMPLE STANDARD WORK ORDER
 DEAD TREE REMOVAL



TRAFFIC CONTROL AND PROTECTION FOR SIDE ROADS, INTERSECTIONS, AND DRIVEWAYS

NOTES:

A. FOR NO LANE RESTRICTION ON THE SIDE ROAD OR DRIVEWAYS

1. SIDE ROAD WITH A SPEED LIMIT OF 40 MPH (60 km/h) OR LESS AS SHOWN ON THE DRAWING AND AS DIRECTED BY THE ENGINEER:
 - a) ONE ROAD CONSTRUCTION AHEAD SIGN 36 x 36 (900x900) WITH A FLASHER AND FLAG MOUNTED ON IT APPROXIMATELY 200' (60 m) IN ADVANCE OF THE MAIN ROUTE.
 - b) THE CLOSED PORTION OF THE MAIN ROUTE SHALL BE PROTECTED BY BLOCKING WITH TYPE I, TYPE II OR TYPE III BARRICADES, 1/3 OF THE CROSS SECTION OF THE CLOSED PORTION.
2. SIDE ROAD WITH A SPEED LIMIT GREATER THAN 40 MPH (60 km/h) AS SHOWN ON THE DRAWING AND AS DIRECTED BY THE ENGINEER:
 - a) ONE ROAD CONSTRUCTION AHEAD SIGN 48 x 48 (1.2 m x 1.2 m) WITH A FLASHER MOUNTED ON IT APPROXIMATELY 500' (150 m) IN ADVANCE OF THE MAIN ROUTE.
 - b) THE CLOSED PORTION OF THE MAIN ROUTE SHALL BE PROTECTED BY BLOCKING WITH TYPE III BARRICADES, 1/2 OF THE CROSS SECTION OF THE CLOSED PORTION.
3. WHEN THE SIDE ROAD LIES BETWEEN THE BEGINNING OF THE MAINLINE SIGNING AND THE WORK ZONE, A SINGLE HEADED ARROW (M6-1) SHALL BE USED IN LIEU OF THE DOUBLE HEADED ARROW (M6-4).

B. FOR A LANE CLOSURE ON A SIDE ROAD OR DRIVEWAYS

- USE APPLICABLE PORTIONS OF THE TYPICAL APPLICATION OF TRAFFIC CONTROL DEVICES (STD. 701501, STD. 701606 OR THE APPROPRIATE STANDARD). THE SPACING OF SIGNS AND BARRICADES SHALL BE ADJUSTED FOR FIELD CONDITIONS AS DIRECTED BY THE ENGINEER. THE DIRECTIONAL ARROW SHALL BE COVERED OR REMOVED WHEN NO LONGER CONSISTENT WITH THE SIDE ROAD LANE CLOSURE.
- C. ADVANCE WARNING SIGNS ARE TO BE OMITTED ON DRIVEWAY UNLESS OTHERWISE NOTED.
- D. THE TRAFFIC CONTROL AND PROTECTION FOR SIDE ROADS, INTERSECTIONS, AND DRIVEWAYS SHALL BE INCIDENTAL TO THE COST OF SPECIFIED TRAFFIC CONTROL STANDARDS OR ITEMS.

All dimensions are in millimeters (inches) unless otherwise shown.

FILE NAME = W:\distatd\22x34\tbl0.dgn	USER NAME = gogliamobt	DESIGNED - LHA	REVISED - J. OBERLE 10-18-95
	PLOT SCALE = 50,000' / IN.	DRAWN -	REVISED - A. HOUSEH 03-06-96
	PLOT DATE = 1/4/2009	CHECKED -	REVISED - A. HOUSEH 10-15-96
		DATE - 06-89	REVISED - T. RAMMACHER 01-06-00

STATE OF ILLINOIS
DEPARTMENT OF TRANSPORTATION

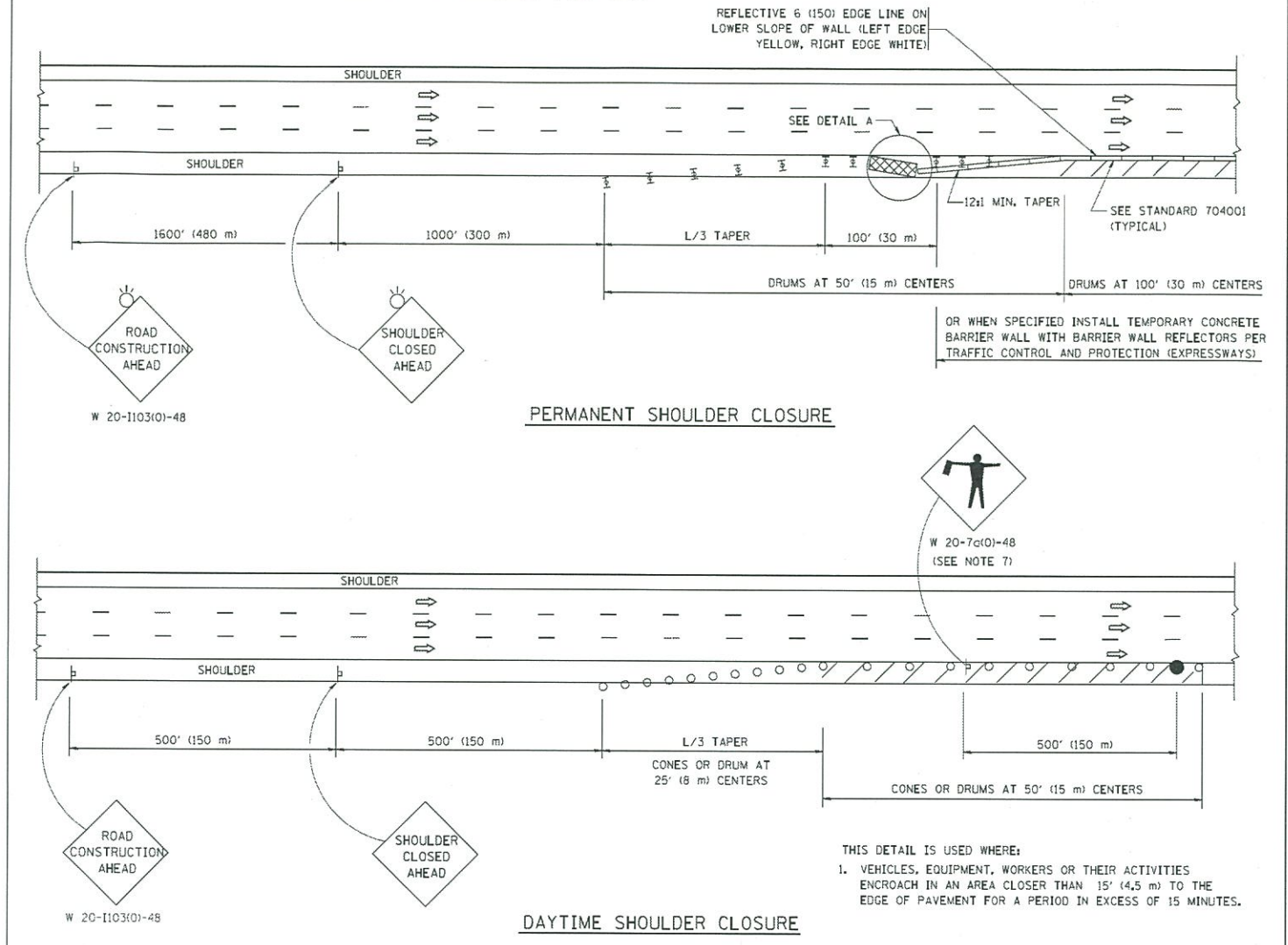
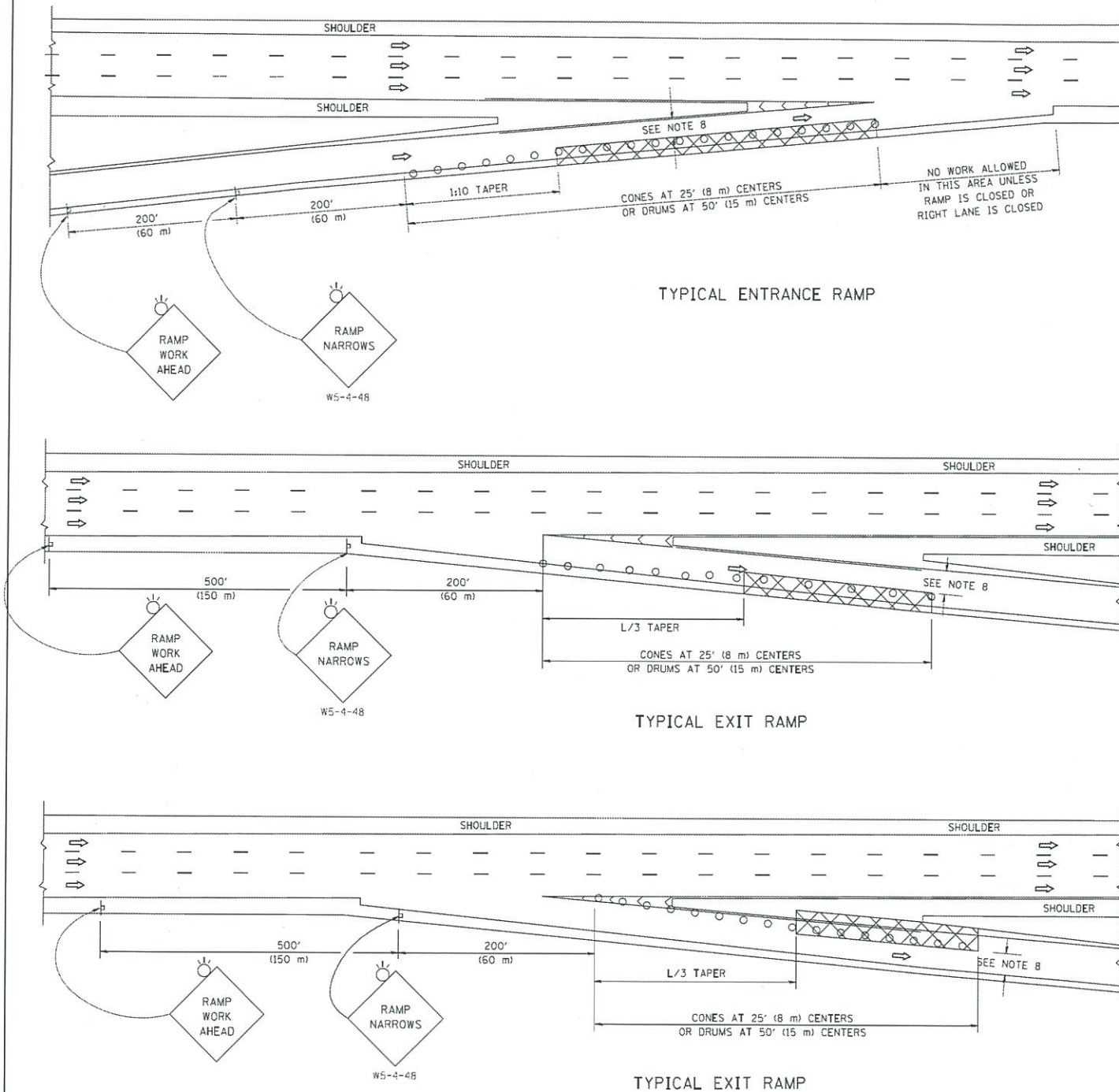
TRAFFIC CONTROL AND PROTECTION FOR
SIDE ROADS, INTERSECTIONS, AND DRIVEWAYS

SCALE: NONE SHEET NO. 1 OF 1 SHEETS STA. TO STA.

F.A. RTE. VAR	SECTION VARIOUS	COUNTY VARIOUS	TOTAL SHEETS 7	SHEET NO. 6
TC-10			CONTRACT NO. 62A54	
FED. ROAD DIST. NO. 1 ILLINOIS FED. AID PROJECT				

PARTIAL RAMP CLOSURE DETAILS

SHOULDER CLOSURE DETAILS



SYMBOLS

- ACTIVE WORK AREA
- SIGN ON PORTABLE OR PERMANENT SUPPORT
- FLAGGER WITH CONTROL SIGN
- TYPE II BARRICADE OR DRUM WITH STEADY BURN MONO-DIRECTIONAL LIGHT
- CONE, DRUM OR BARRICADE
- IMPACT ATTENUATOR OF TYPE AND TEST LEVEL SPECIFIED

GENERAL NOTES

1. THE "L" DISTANCE EQUALS:

SPEED LIMIT	METRIC	ENGLISH
45 mph (80 km/h) OR GREATER:	$L=0.65(W)(S)$	$L=(W)(S)$

W = WIDTH OF OFFSET IN FEET (METERS)
S = NORMAL POSTED SPEED MPH (KM/H)
2. PLASTIC DRUMS WITH HIGH PERFORMANCE REFLECTIVE SHEETING AND STEADY BURNING LIGHTS ARE REQUIRED FOR ALL NIGHTTIME CLOSURES.
3. ALL SIGNS SHALL BE POST MOUNTED IF THE CLOSURE TIME EXCEEDS FOUR DAYS.
4. FLASHING LIGHTS SHALL BE USED DURING THE HOURS OF DARKNESS AND SHALL BE INSTALLED ABOVE THE FIRST TWO SETS OF SIGNS.
5. THE IMPACT ATTENUATOR, TEMPORARY IS NOT REQUIRED WHEN THE TEMPORARY CONCRETE BARRIER WALL IS PROTECTED BY OR IS TIED INTO THE EXISTING GUARDRAIL. IF OFFSET IS LESS THAN 5 FEET USE NARROW USE TYPE DEVICE TO MEET NCHRP350/MASH.
6. AUTHORIZATION FROM THE DISTRICT'S BUREAU OF TRAFFIC IS REQUIRED FOR ALL FREEWAY CLOSURES.
7. THE FLAGGER AND FLAGGER SIGN ARE REQUIRED AT THE ABOVE WORK SITES WHEN:
 - a. FOUR OR MORE WORK VEHICLES ENTER THE TRAFFIC LANES IN A ONE HOUR PERIOD.
 - b. THE WORK ACTIVITY REQUIRES FREQUENT ENCROACHMENT INTO THE LANE OPEN TO TRAFFIC. THE FLAGGER SHALL BE STATIONED APPROXIMATELY 100' (30 m) TO 200' (60 m) IN ADVANCE OF THE WORKERS.
8. 12" MIN. WIDTH TANGENT SECTION
16" MIN. WIDTH CURVE SECTION.

THIS DETAIL IS USED WHERE:
1. VEHICLES, EQUIPMENT, WORKERS OR THEIR ACTIVITIES ENCROACH IN AN AREA CLOSER THAN 15' (4.5 m) TO THE EDGE OF PAVEMENT FOR A PERIOD IN EXCESS OF 15 MINUTES.



FILE NAME =	USER NAME = footemj	DESIGNED -	REVISED - J.A.F. 12-06
ca\pwwork\pwwork\footemj\08108315\1017.dgn		DRAWN - D.W.S.	REVISED - S.P.B. 01-07
	PLOT SCALE = 50,0000 / 1	CHECKED -	REVISED - S.P.B. 12-09
	PLOT DATE = 7/1/2013	DATE - 11-96	REVISED - M.D. 06-13

STATE OF ILLINOIS
DEPARTMENT OF TRANSPORTATION

TRAFFIC CONTROL DETAILS FOR FREEWAY SHOULDER CLOSURES AND PARTIAL RAMP CLOSURES			
SCALE: NONE	SHEET NO. 1 OF 1 SHEETS	STA.	TO STA.

F.A. RTE.	SECTION	COUNTY	TOTAL SHEETS	SHEET NO.
VAR	VARIOUS	VARIOUS	7	7
FED. ROAD DIST. NO. 1 ILLINOIS FED. AID PROJECT			CONTRACT NO. 62A34	