

STATE OF ILLINOIS
DEPARTMENT OF TRANSPORTATION
DIVISION OF HIGHWAYS

**PROPOSED
HIGHWAY PLANS**

FAI 70 (I-70) & FAI 72 (I-72)
SECTION D7 ASH BORER CONTROL 2015

TREE REMOVAL
CLARK & MACON COUNTIES

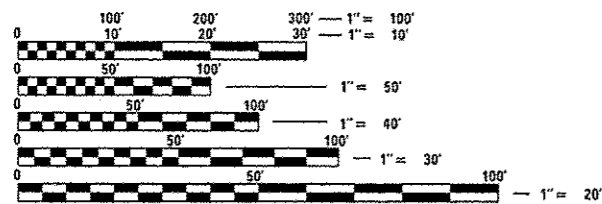
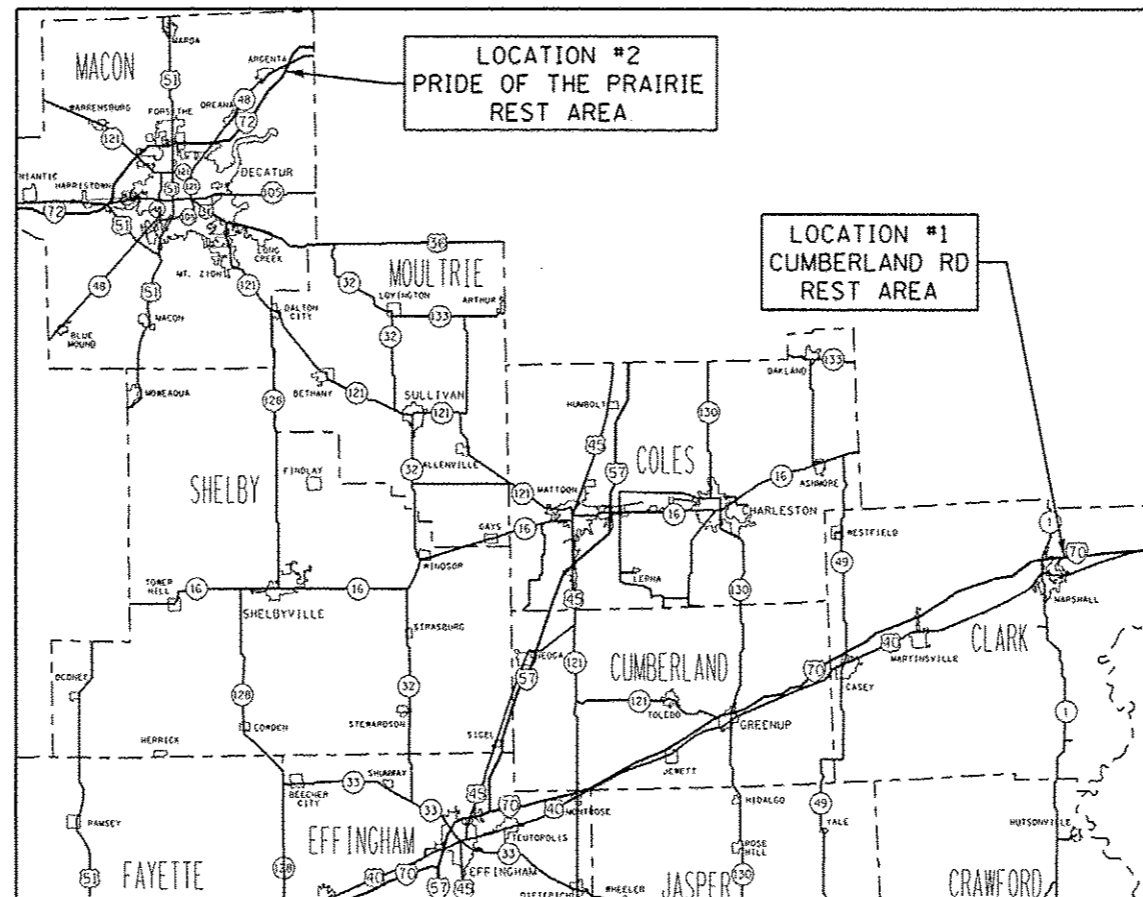
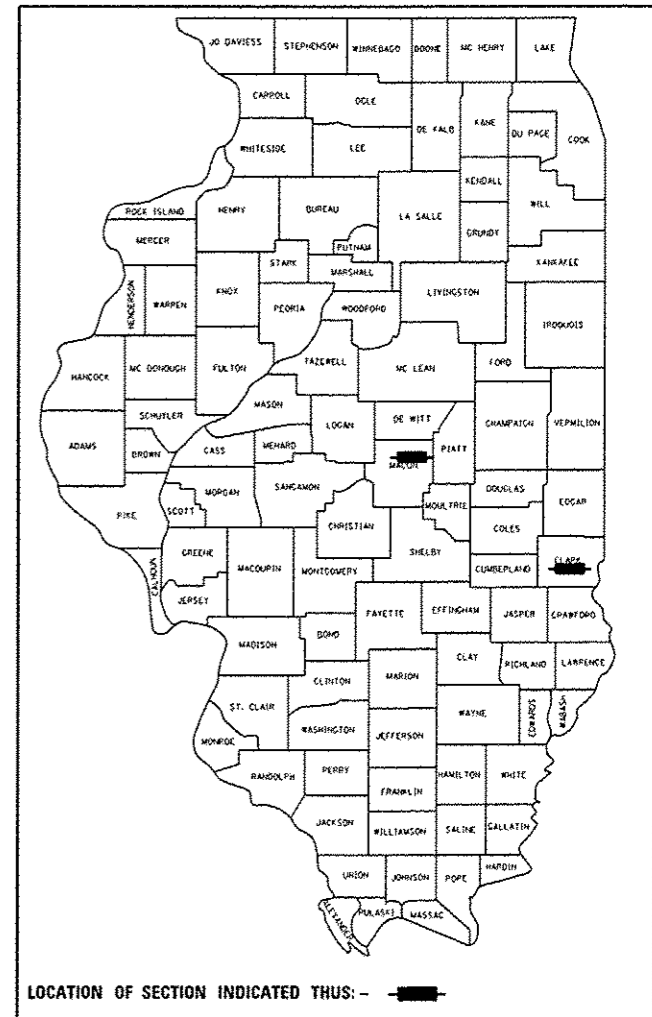
C-97-007-15

FOR INDEX OF SHEETS, SEE SHEET NO. 2

F.A.I. RTE. 70/72	SECTION ..	COUNTY ..	TOTAL SHEETS 5	SHEET NO. 1
ILLINOIS CONTRACT NO. 74696				

••07 ASH BORER CONTROL 2015
•CLARK & MACON

D-97-006-15



FULL SIZE PLANS HAVE BEEN PREPARED USING STANDARD ENGINEERING SCALES. REDUCED SIZED PLANS WILL NOT CONFORM TO STANDARD SCALES. IN MAKING MEASUREMENTS ON REDUCED PLANS, THE ABOVE SCALES MAY BE USED.

J.U.L.I.E.
JOINT UTILITY LOCATION INFORMATION FOR EXCAVATION
1-800-892-0123
OR 811

PROJECT ENGINEER: MARK DAUGHERTY
PROJECT MANAGER:
PHONE: (217) 342-8341
CONTRACT NO. 74696

STATE OF ILLINOIS
DEPARTMENT OF TRANSPORTATION
DIVISION OF HIGHWAYS

SUBMITTED OCTOBER 28, 2014
Rep Z Omer
DEPUTY DIRECTOR OF HIGHWAYS, REGION ENGINEER

Mar 20, 2015
John D. Baramelli, P.E.
ENGINEER OF DESIGN AND ENVIRONMENT

Mar 20, 2015
Omer Omer, P.E.
DIRECTOR OF HIGHWAYS, CHIEF ENGINEER

PRINTED BY THE AUTHORITY
OF THE STATE OF ILLINOIS

GENERAL NOTES

1. THE WORK INCLUDED IN THIS CONTRACT CONSISTS OF TREE REMOVAL, TREE PLANTING, SEEDING, AND ANY OTHER WORK NECESSARY TO COMPLETE THE CONTRACT.
2. ALL TREE REMOVAL AND TREE PLANTING WILL BE WITHIN THE LIMITS OF THE REST AREAS SHOWN ON THE PLANS. BOTH EB AND WB PRIDE OF THE PRAIRIE REST AREAS WILL BE AFFECTED. EXACT LOCATIONS WILL BE DETERMINED BY DISTRICT 7 OPERATIONS.
3. REST AREA ENTRANCE AND EXIT RAMPS SHALL REMAIN OPEN AT ALL TIMES. NO EQUIPMENT WILL BE ALLOWED TO ENCROACH ON THE RAMPS. EQUIPMENT AND MATERIALS WILL BE ALLOWED TO BE STORED ON-SITE AT LOCATIONS DETERMINED BY THE ENGINEER.

INDEX OF SHEETS

SHEET NO	TITLE
1	COVER SHEET
2	GENERAL NOTES, INDEX OF SHEETS, LIST OF STANDARDS
3	SUMMARY OF QUANTITIES
4-5	LOCATION MAPS, SCHEDULES

THE FOLLOWING STANDARDS ARE A PART OF THESE PLANS AND ARE INCLUDED FOLLOWING THE LAST NUMBERED SHEET OF THE PLANS.

000001-06	STANDARD SYMBOLS, ABBREVIATIONS, AND PATTERNS
001006	DECIMAL OF AN INCH AND OF A FOOT

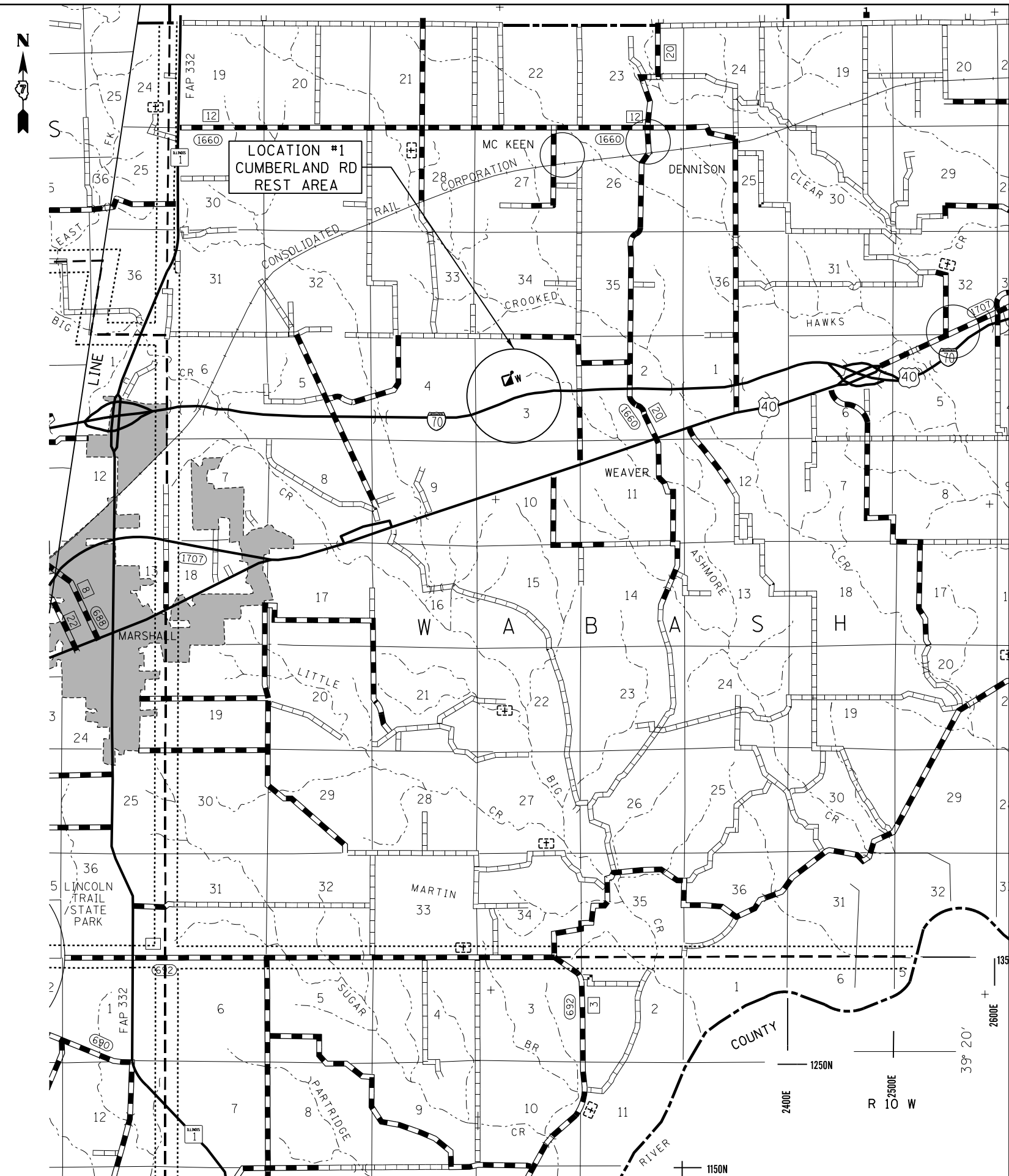
FILE NAME =	USER NAME = staffennk	DESIGNED -	REVISED -	STATE OF ILLINOIS DEPARTMENT OF TRANSPORTATION	GENERAL NOTES & INDEX OF SHEETS	F.A.I. RTE.	SECTION	COUNTY	TOTAL SHEETS	SHEET NO.	
c:\pvc\work\pvidot\staffennk\02429672\0	74696-ashtr-gemote.dgn	DRAWN -	REVISED -			70/72	**	*	5	2	
Default	PLOT SCALE = 1/8" = 1'-0"	CHECKED -	REVISED -			**07 ASH BORER CONTROL 2015		CONTRACT NO. 74696			
	PLOT DATE = 10/29/2014	DATE -	REVISED -			SCALE:	SHEET OF SHEETS	STA. TO STA.	*CLARK & MACON ILLINOIS FED. AID PROJECT		

TREE PLANTING SCHEDULE - CUMBERLAND ROAD REST AREA

TYPE	UNIT	QUANTITY
TREE, ACER RUBRUM (RED MAPLE), 2" CALIPER, BALLED AND BURLAPPED	EACH	6
TREE, ACER SACCHARUM (SUGAR MAPLE), 2" CALIPER, BALLED AND BURLAPPED	EACH	4
TREE, QUERCUS PALUSTRIS (PIN OAK), 2" CALIPER, BALLED AND BURLAPPED	EACH	4
TREE, QUERCUS RUBRA (RED OAK), 2" CALIPER, BALLED AND BURLAPPED	EACH	3
TREE, CERCIS CANADENSIS (EASTERN REDBUD), 2" CALIPER, BALLED AND BURLAPPED	EACH	3
TOTAL		20

TREE REMOVAL SCHEDULE - CUMBERLAND ROAD REST AREA

TYPE	UNIT	QUANTITY
TREE REMOVAL (6 TO 15 UNITS DIAMETER)	UNIT	125
TREE REMOVAL (OVER 15 UNITS DIAMETER)	UNIT	293
TOTAL		418



FILE NAME =	USER NAME = steffenmk	DESIGNED -	REVISED -
c:\pw\work\p\dot\stef\enmk\d0409672\074696-sht-schedules.dgn		DRAWN -	REVISED -
Default	PLOT SCALE = 100.0000' / in.	CHECKED -	REVISED -
	PLOT DATE = 10/29/2014	DATE -	REVISED -

STATE OF ILLINOIS
DEPARTMENT OF TRANSPORTATION

CLARK COUNTY
CUMBERLAND RD REST AREA

SCALE: SHEET OF SHEETS STA. TO STA.

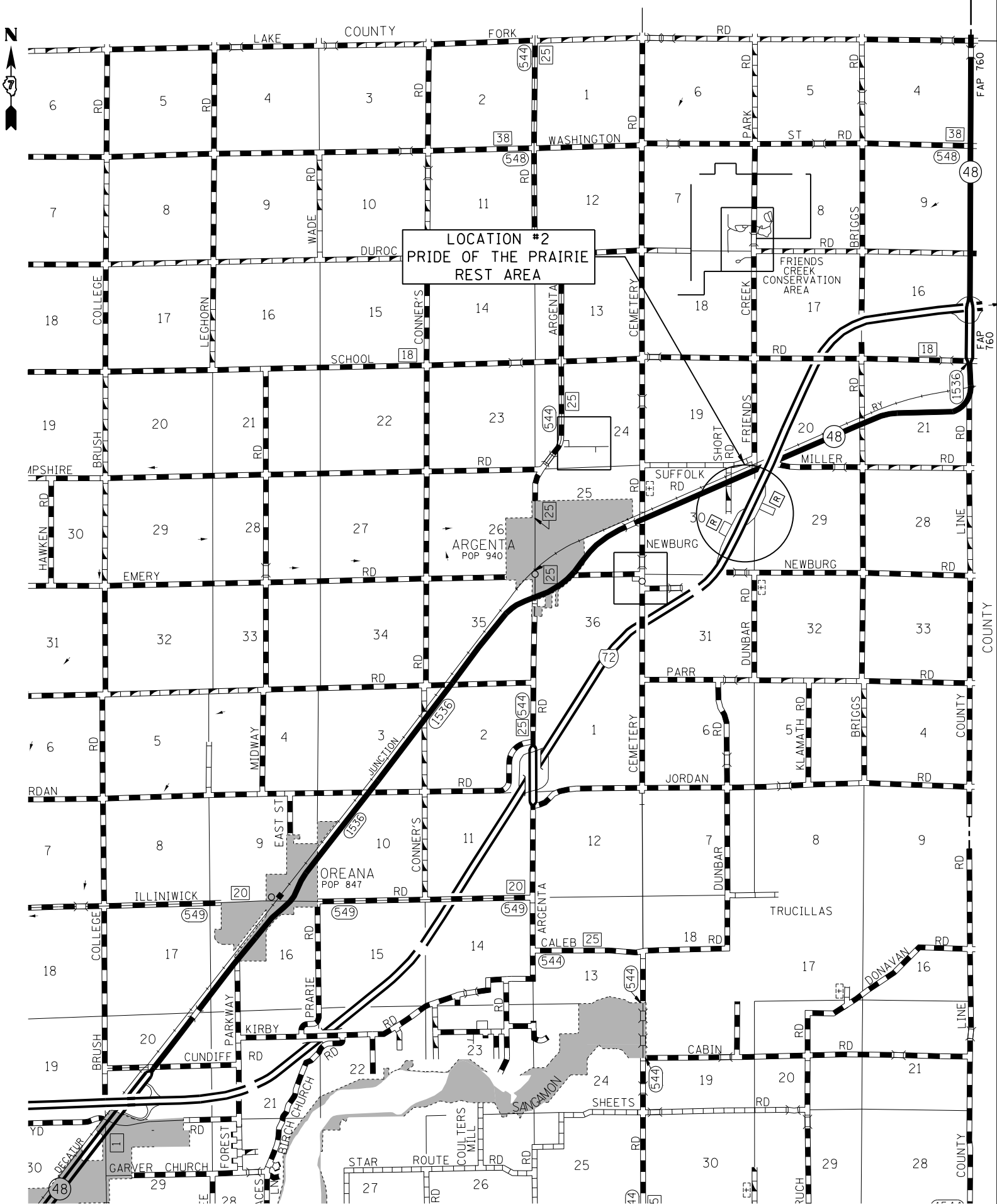
F.A.I. RE.	SECTION	COUNTY	TOTAL SHEETS	SHEET NO.
70/72	**	*	5	4
*D7 ASH BORER CONTROL 2015			CONTRACT NO. 74696	
*CLARK & MACON ILLINOIS FED. AID PROJECT				

TREE PLANTING SCHEDULE - PRIDE OF THE PRAIRIE REST AREA

TYPE	UNIT	QUANTITY
TREE, ACER RUBRUM (RED MAPLE), 2" CALIPER, BALLED AND BURLAPPED	EACH	19
TREE, ACER SACCHARUM (SUGAR MAPLE), 2" CALIPER, BALLED AND BURLAPPED	EACH	11
TREE, QUERCUS PALUSTRIS (PIN OAK), 2" CALIPER, BALLED AND BURLAPPED	EACH	11
TREE, QUERCUS RUBRA (RED OAK), 2" CALIPER, BALLED AND BURLAPPED	EACH	7
TREE, CERCIS CANADENSIS (EASTERN REDBUD), 2" CALIPER, BALLED AND BURLAPPED	EACH	7
TOTAL		55

TREE REMOVAL SCHEDULE - PRIDE OF THE PRAIRIE REST AREA

TYPE	UNIT	QUANTITY
TREE REMOVAL (6 TO 15 UNITS DIAMETER)	UNIT	340
TREE REMOVAL (OVER 15 UNITS DIAMETER)	UNIT	792
TOTAL		1132



FILE NAME =	USER NAME = steffenmk	DESIGNED -	REVISED -
ci:\pw_work\pwidot\steffenmk\d0409672\074696-sht-schedules.dgn		DRAWN -	REVISED -
Default	PLOT SCALE = 100.0000' / in.	CHECKED -	REVISED -
	PLOT DATE = 10/29/2014	DATE -	REVISED -

**STATE OF ILLINOIS
DEPARTMENT OF TRANSPORTATION**

**MACON COUNTY
PRIDE OF THE PRAIRIE REST AREA**

SCALE: SHEET OF SHEETS STA. TO STA.

F.A.I. RE.	SECTION	COUNTY	TOTAL SHEETS	SHEET NO.
70/72	..	.	5	5
••07 ASH BORER CONTROL 2015			CONTRACT NO. 74696	
•CLARK & MACON ILLINOIS FED. AID PROJECT				