

F.A. RTE.	SECTION	COUNTY	TOTAL SHEETS	SHEET NO.
VAR	DIST 8 BRIDGE DECK 2015-1	VARIOUS	7	1
		ILLINOIS	CONTRACT NO. 76H56	

- 1 COVER SHEET
- 2 GENERAL NOTES, STANDARDS & COMMITMENTS
- 3 SUMMARY OF QUANTITIES
- 4 SCHEDULES
- 5-7 LOCATION MAPS

DEPARTMENT OF TRANSPORTATION
DIVISION OF HIGHWAYS

PROPOSED HIGHWAY PLANS

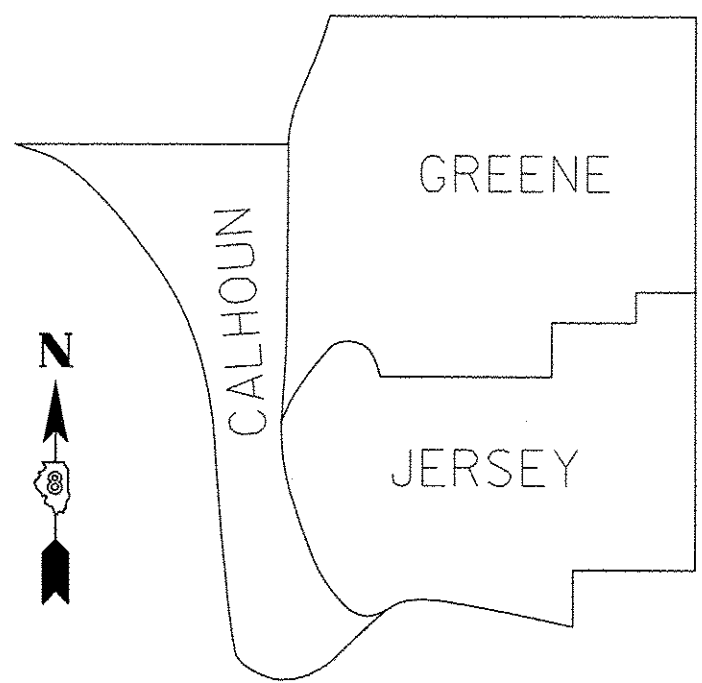
ROUTES VARIOUS
DIST 8 BRIDGE DECK 2015-1

BRIDGE DECK SEALING
COUNTIES CALHOUN, GREENE & JERSEY

C-98-009-15

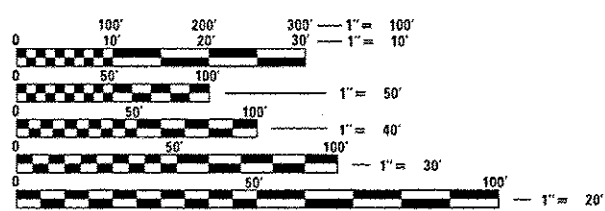
BRIDGE STRUCTURE NUMBERS

007-0019	031-0003	042-0001
007-0020	031-0005	042-0003
007-0021	031-0006	042-0004
007-0022	031-0012	042-0009
007-0023	031-0016	042-0013
007-0024	031-0022	042-0014
007-0025	031-0030	042-0017
007-0026	031-0031	042-0023
007-0027	031-0032	042-0024
007-0028	031-0033	042-0025
	031-0034	042-0026
	031-0035	042-0027
	031-0036	042-0041
	031-0037	
	031-0038	
	031-0039	
	031-0040	
	031-0041	
	031-0042	
	031-0043	
	031-0044	
	031-0045	



NOT TO SCALE

SEE SHEETS 5-7 FOR DETAILED LOCATION MAPS



FULL SIZE PLANS HAVE BEEN PREPARED USING STANDARD ENGINEERING SCALES. REDUCED SIZED PLANS WILL NOT CONFORM TO STANDARD SCALES. IN MAKING MEASUREMENTS ON REDUCED PLANS, THE ABOVE SCALES MAY BE USED.

J.U.L.I.E.
JOINT UTILITY LOCATION INFORMATION FOR EXCAVATION
1-800-892-0123
OR 811

PROJECT ENGINEER: TIM PADGETT (618) 346-3325
PROJECT MANAGER: PHIL COPPERNOLL (618) 346-3480

GROSS LENGTH = 8382.52 FT. = 1.588 MILE
NET LENGTH = 8382.52 FT. = 1.588 MILE

CONTRACT NO. 76H56

STATE OF ILLINOIS
DEPARTMENT OF TRANSPORTATION
DIVISION OF HIGHWAYS

SUBMITTED *Feb 5 2015*

Jeffrey E. K...
DEPUTY DIRECTOR OF HIGHWAYS, REGION ENGINEER

May 20 2015
Jim D. Baranzelli PE
ENGINEER OF DESIGN AND ENVIRONMENT

May 20 2015
Omec Osman PE
DIRECTOR OF HIGHWAYS, CHIEF ENGINEER

PRINTED BY THE AUTHORITY
OF THE STATE OF ILLINOIS

GENERAL NOTES

- ① THE CONTRACTOR SHALL VERIFY ALL DIMENSIONS AND CONDITIONS IN THE FIELD PRIOR TO CONSTRUCTION AND ORDERING OF MATERIALS.
- ② EXISTING PAVEMENT MARKINGS AND RPM'S SHALL BE TEMPORARILY COVERED PRIOR TO APPLICATION OF THE DECK SURFACE TREATMENT, TO PREVENT THE MATERIAL FROM BEING APPLIED TO THE MARKINGS AND TO PROTECT THE REFLECTIVE PROPERTIES OF THE MARKINGS. THE TEMPORARY COVERING MATERIAL USED SHALL BE SUCH THAT IT WILL NOT AFFECT THE MARKING'S REFLECTIVITY WHEN REMOVED AFTER APPLICATION OF THE DECK SURFACE TREATMENT AND PRIOR TO OPENING TO TRAFFIC. COST IS INCLUDED WITH THE (CONCRETE SEALER) DECK SURFACE TREATMENT SPECIFIED
- ③ NO OVERNIGHT LANE CLOSURES SHALL BE ALLOWED.
- ④ ILLINOIS STATE LAW REQUIRES A 48-HOUR NOTICE TO BE GIVEN TO UTILITIES BEFORE DIGGING. FIELD MARKING OF FACILITIES MAY BE OBTAINED BY CONTACTING J.U.L.I.E. (1-800-892-0123 OR 811) OR FOR NON-MEMBERS THE UTILITY COMPANY DIRECTLY.
- ⑤ ALL TURF AREAS DISTURBED BY THE CONTRACTOR SHALL BE SEEDED WITH THE APPROPRIATE EROSION CONTROL, AS DIRECTED BY THE ENGINEER, AT THE CONTRACTOR'S EXPENSE.
- ⑥ REFER TO RECURRING SPECIAL PROVISION #24 WHEN PERFORMING WORK ON SN 042-0026 AND SN 042-0027

HIGHWAY STANDARDS

000001-06 701406-09
 701201-04 701421-07
 701400-08 701428
 701901-04

COMMITMENTS

NONE

STRUCTURE #	FACILITY CARRIED	FEATURE CROSSED	LOCATION DESCRIPTION	CURRENT ADT	ADT YR
007-0019	IL 100	PANTHER CREEK	5 MI N KAMPSVILLE	425	2013
007-0020	IL 100	SILVER CREEK	1.8 MI N ILL 96	525	2013
007-0021	IL 96	BELLEVIEW HOLLOW CREEK	BELLEVIEW	475	2013
007-0022	IL 100	MICHAEL CREEK	IN MICHAEL M. P. 5.3	1200	2013
007-0023	IL 96	HOWELL HOLLOW CREEK	8.6 MI N MOZIER	800	2013
007-0024	IL 96	WILDCAT HOLLOW CREEK	6.1 MI N MOZIER	675	2013
007-0025	IL 96	WEST PANTHER CREEK	2.7 MI N MOZIER	475	2013
007-0026	PARK ST IN HARDIN	GESKE HOLLOW CREEK	S OF JOE PAGE BRIDGE	4300	2012
007-0027	IL 100	CRAWFORD CREEK	8.1 MI N HARDIN	1100	2013
007-0028	IL 96	FOX CREEK	5MI W KAMPSVILLE	450	2013
031-0003	ELDRED HILLVIEW RD	BUCKS BRANCH	3.6 MI N HILLVIEW	375	2012
031-0005	ELDRED HILLVIEW RD	TRIMLEY CREEK	2 MI N HILLVIEW	375	2012
031-0006	ELDRED HILLVIEW RD	GR RR & HURRICANE RR	WEST LIMIT HILLVIEW	450	2012
031-0012	ELDRED HILLVIEW RD	HURRICANE CREEK	0.2 MI S JCT 108	600	2012
031-0016	IL 267	LICK CREEK	6.6 MI N GREENFIELD	600	2013
031-0022	US 67	MACOUPIN CREEK	4.8 MI S JCT 108-67	1800	2013
031-0030	US 67	APPLE CREEK	3.31 MI S WHITEHALL	3550	2013
031-0031	US 67	APPLE CREEK OVERFLOW	3.52 MI S WHITEHALL	3550	2013
031-0032	ELDRED HILLVIEW RD	SCOTT HOLLOW CREEK	1.7 MI S HILLVIEW	450	2012
031-0033	ELDRED HILLVIEW RD	DOUGAL HOLLOW CREEK	8 MI N ILL 108	400	2012
031-0034	IL 267	LICK CREEK	0.78 MI S MORAGN CO LINE	1800	2013
031-0035	IL 106	SEMINARY CREEK	1 MI N WHITEHALL	1100	2013
031-0036	ELDRED HILLVIEW RD	APPLE CREEK	4.5 MI S HILLVIEW	375	2012
031-0037	ELDRED HILLVIEW RD	APPLE CREEK OVERFLOW	4.6 MI S HILLVIEW	375	2012
031-0038	IL 108	HURRICANE CREEK	1.1 MI W FAS 739	500	2013
031-0039	ELDRED HILLVIEW RD	STREAM	4.5 MI N JCT 108	400	2012
031-0040	ELDRED HILLVIEW RD	STREAM	4.1 MI N JCT 108	400	2012
031-0041	ELDRED HILLVIEW RD	COLE CREEK	2.2 MI N JCT 108	500	2012
031-0042	IL 108	EAST TAYLOR CREEK BRANCH	9.4 MI E CARROLTON	1000	2013
031-0043	IL 267	TAYLOR CREEK	0.1 MI N ROCKBRIDGE	2200	2013
031-0044	IL 267	BEAR CREEK	3.5 MI N GREENFIELD	2000	2013
031-0045	IL 108	WEST TAYLOR CREEK BRANCH	8.5 MI E CARROLTON	1000	2013
042-0001	US 67	DE ARCY CREEK	1.7 MI N JERSEYVILLE	5650	2013
042-0003	IL 16 & 100	AUTEN DITCH	1.6 MI SC CALHOUN CO LINE	2250	2013
042-0004	IL 16 & 100	SHAW HOLLOW	2 MI W ILL 100	2250	2013
042-0009	ELDRED HILLVIEW RD	MACOUPIN CREEK	GREENE CO LINE	750	2007
042-0013	IL 100	CHATAQUA CREEK	AT CHATAQUA	3950	2013
042-0014	IL 100	ELSAH CREEK	AT ELSAH	4750	2013
042-0017	IL 267	MACOUPIN CREEK	ROCK BRIDGE, CO LINE	1750	2013
042-0023	IL 100 (NB)	PIASA CREEK	0.7 MI N CLIFTON TERR	2950	2013
042-0024	IL 100 (SB)	PIASA CREEK	0.7 MI N CLIFTON TERR	2950	2013
042-0025	IL 109	TRIB TO OTTER CREEK	2.5 MI S JERSEYVILLE	4600	2013
042-0026	US 67 SB	PIASA CREEK	7.6 MI S JERSEYVILLE	9350	2013
042-0027	US 67 NB	PIASA CREEK	7.6 MI S JERSEYVILLE	9350	2013
042-0041	IL 16 & 100	BAUM BRANCH CREEK	0.1 MI E JCT RT. 100	1800	2013

FILE NAME =	USER NAME = rholids	DESIGNED -	REVISED -	STATE OF ILLINOIS DEPARTMENT OF TRANSPORTATION	GENERAL NOTES, STANDARDS & COMMITMENTS	F.A. RTE.	SECTION	COUNTY	TOTAL SHEETS	SHEET NO.	
or\p\work\p\update\trholids\0419465\0876	55-ht-plan.dgn	DRAWN -	REVISED -			VAR	DIST 8 BRIDGE DECK 2015-	VARIOUS	7	2	
	PLOT SCALE = 100.0000 ' / 1"	CHECKED -	REVISED -			SCALE:		SHEET NO. OF SHEETS	STA.	TO STA.	CONTRACT NO. 76H56
	PLOT DATE = 2/2/2015	DATE -	REVISED -			FED. ROAD DIST. NO.		ILLINOIS	FED. AID PROJECT		

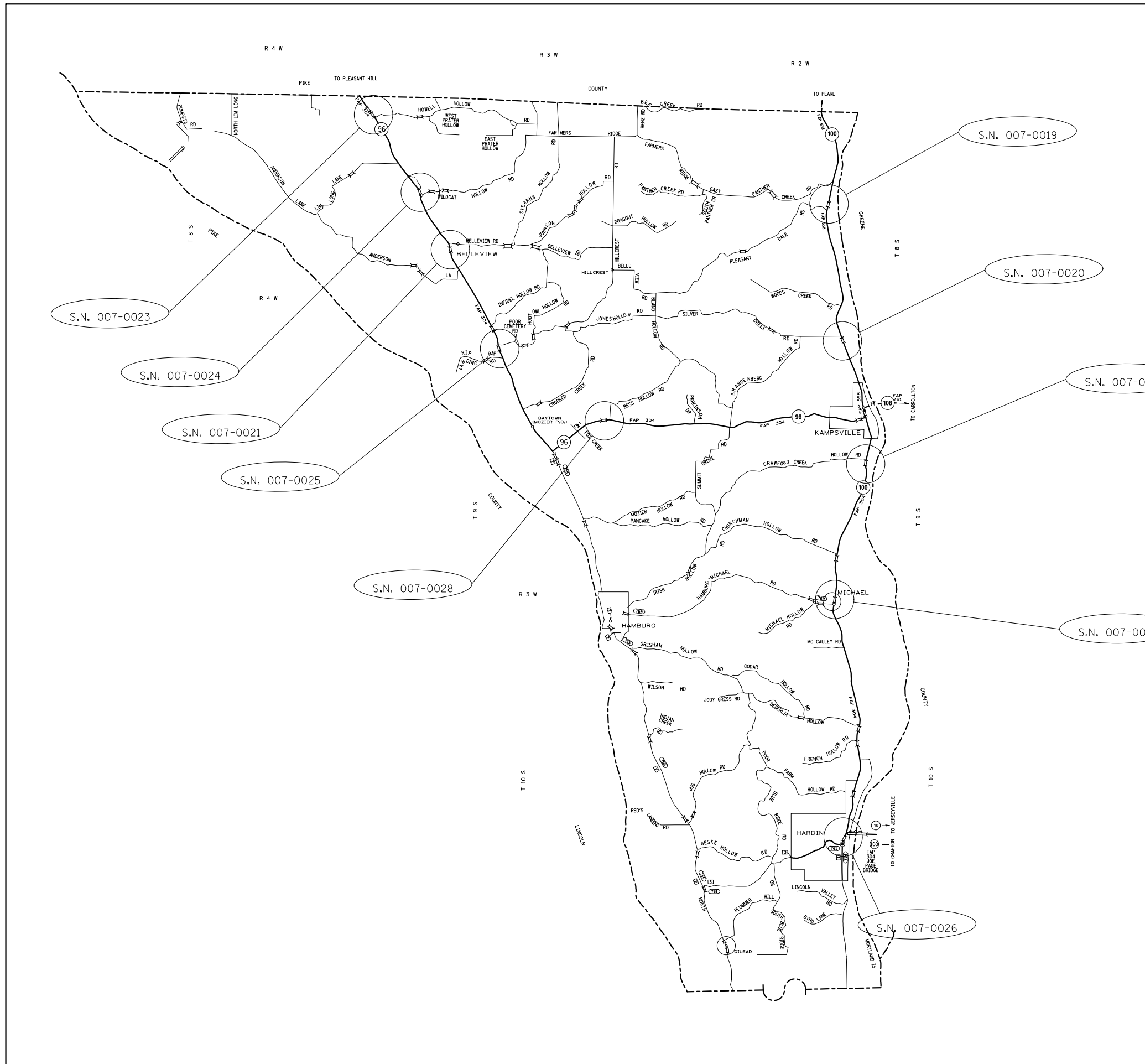
CODE NO.	ITEM	UNIT	TOTAL QUANTITY	CONSTRUCTION CODE		
				100% STATE	100% STATE	100% STATE
				BRIDGE	BRIDGE	BRIDGE
				0014	0014	0014
				RURAL	RURAL	RURAL
				CALHOUN	GREENE	JERSEY
67100100	MOBILIZATION	L SUM	1.00	0.33	0.34	0.33
X5870015	BRIDGE DECK CONCRETE SEALER	SO FT	362873	44962	171214	146697
X7010218	TRAFFIC CONTROL AND PROTECTION, (SPECIAL)	EACH	45	10	22	13
X7010410	SPEED DISPLAY TRAILER	CAL MO	1.00	0.00	0.00	1.00

4

CALHOUN COUNTY					
STRUCTURE #	BRIDGE DECK CONCRETE SEALER (TYP.)	TC&P STANDARD (SPECIAL) RURAL	TC&P STANDARD 701201	TC&P STANDARD 701406	TC&P STANDARD 701421
	SQ FT	EACH			
007-0019	6402	1	X		
007-0020	4477	1	X		
007-0021	4714	1	X		
007-0022	2951	1	X		
007-0023	2931	1	X		
007-0024	4307	1	X		
007-0025	5098	1	X		
007-0026	3661	1	X		
007-0027	4761	1	X		
007-0028	5660	1	X		
TOTAL	44962	10			

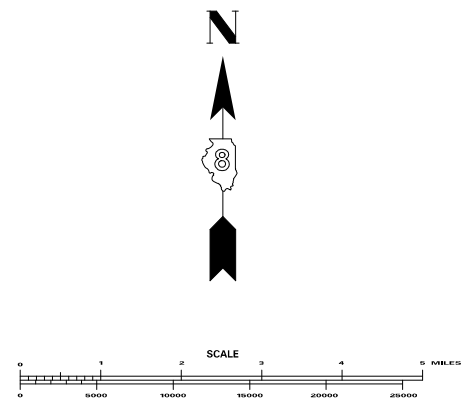
GREENE COUNTY					
STRUCTURE #	BRIDGE DECK CONCRETE SEALER (TYP.)	TC&P STANDARD (SPECIAL) RURAL	TC&P STANDARD 701201	TC&P STANDARD 701406	TC&P STANDARD 701421
	SQ FT	EACH			
031-0003	5149	1	X		
031-0005	1259	1	X		
031-0006	20165	1	X		
031-0012	3832	1	X		
031-0016	6127	1	X		
031-0022	26382	1	X		
031-0030	7318	1	X		
031-0031	40319	1	X		
031-0032	758	1	X		
031-0033	858	1	X		
031-0034	4085	1	X		
031-0035	3984	1	X		
031-0036	16185	1	X		
031-0037	7651	1	X		
031-0038	3283	1	X		
031-0039	2768	1	X		
031-0040	2175	1	X		
031-0041	2985	1	X		
031-0042	3440	1	X		
031-0043	6243	1	X		
031-0044	3559	1	X		
031-0045	2689	1	X		
TOTAL	171214	22			

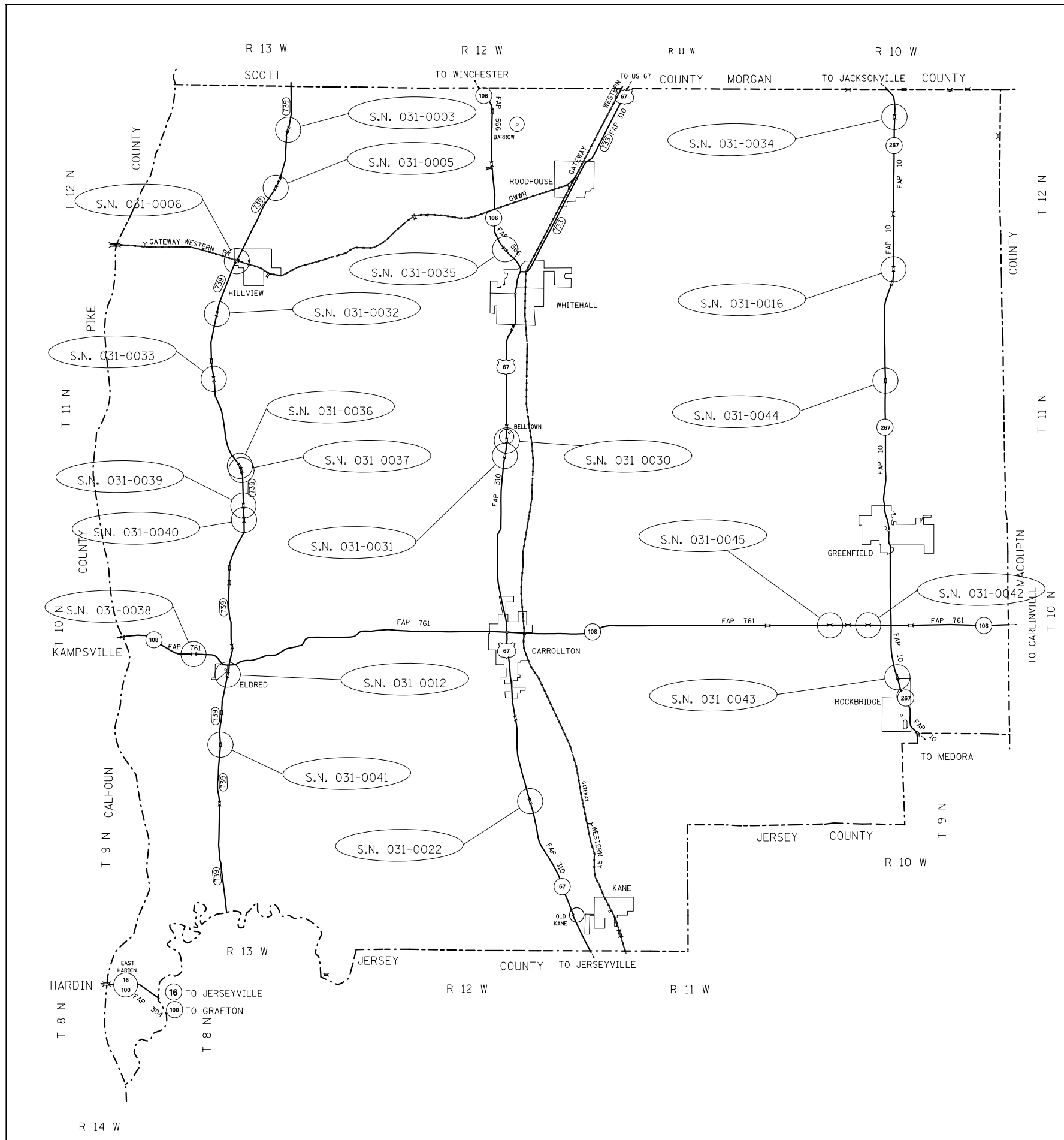
JERSEY COUNTY					
STRUCTURE #	BRIDGE DECK CONCRETE SEALER (TYP.)	TC&P STANDARD (SPECIAL) RURAL	TC&P STANDARD 701201	TC&P STANDARD 701406	TC&P STANDARD 701421
	SQ FT	EACH			
042-0001	1992	1	X		
042-0003	3707	1	X		
042-0004	3060	1	X		
042-0009	16364	1	X		
042-0013	8759	1			X
042-0014	7574	1			X
042-0017	51495	1	X		
042-0023	12359	1			X
042-0024	12359	1			X
042-0025	2807	1	X		
042-0026	10736	1		X	
042-0027	12994	1		X	
042-0041	2491	1	X		
TOTAL	146697	13			



STRUCTURE #	LATITUDE	LONGITUDE	ADT	LOCATION DESCRIPTION
007-0019	39°21'57.06" N	90°37'34.43" W	425	5 MI N KAMPSVILLE
007-0020	39°19'17.40" N	90°37'09.30" W	525	1.8 MI N ILL 96
007-0021	39°50'59.56" N	90°47'02.58" W	475	BELLEVUE
007-0022	39°14'09.24" N	90°37'20.23" W	1200	IN MICHAEL M. P. 5. 3
007-0023	39°23'33.38" N	90°48'59.79" W	800	8.6 MI N MOZIER
007-0024	39°21'59.62" N	90°47'48.64" W	675	6.1 MI N MOZIER
007-0025	39°19'06.37" N	90°45'45.84" W	475	2.7 MI N MOZIER
007-0026	39°09'29.78" N	90°37'02.55" W	4300	S OF JOE PAGE BRIDGE
007-0027	39°16'52.60" N	90°36'35.05" W	1100	8.1 MI N HARDIN
007-0028	39°17'41.46" N	90°43'06.53" W	450	5MI W KAMPSVILLE

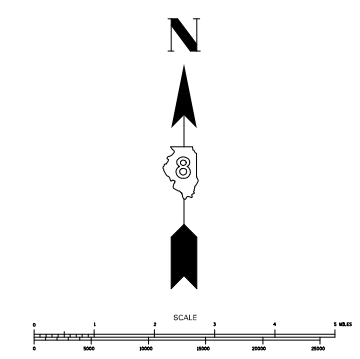
**NOTE: LATITUDE AND LONGITUDE COORINATES WERE OBTAINED FROM GOOGLE EARTH



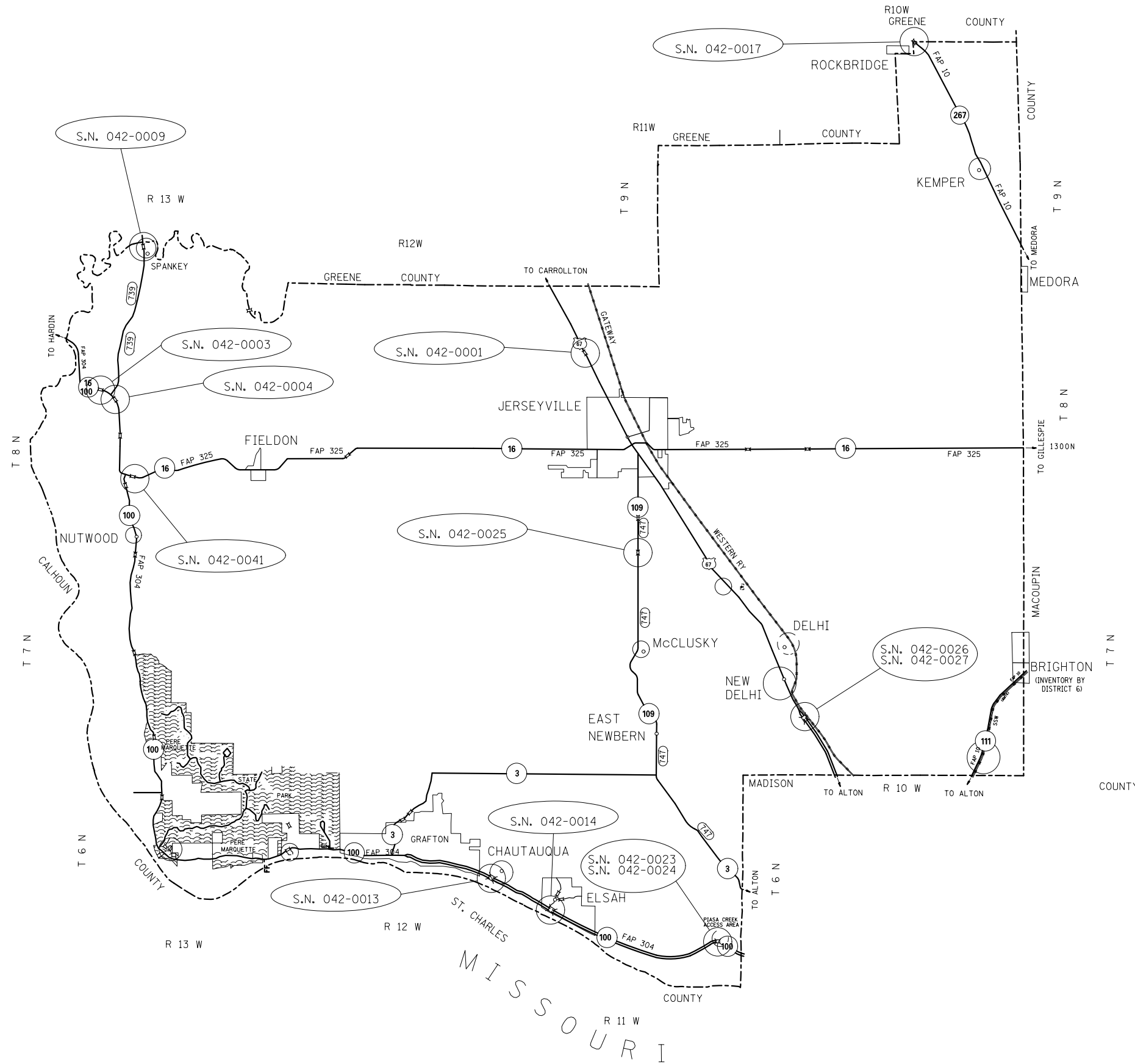


STRUCTURE #	LATITUDE	LONGITUDE	ADT	LOCATION DESCRIPTION
031-0003	39°30'12.62" N	90°31'17.23" W	375	3.6 MI N HILLVIEW
031-0005	39°28'50.21" N	90°31'38.49" W	375	2 MI N HILLVIEW
031-0006	39°27'04.52" N	90°32'52.47" W	450	WEST LIMIT HILLVIEW
031-0012	39°17'07.27" N	90°33'04.39" W	600	0.2 MI S JCT 108
031-0016	39°26'54.40" N	90°12'30.12" W	600	6.6 MI N GREENFIELD
031-0022	39°14'04.25" N	90°23'40.94" W	1800	4.8 MI S JCT 108-67
031-0030	39°22'43.71" N	90°24'33.34" W	3550	3.31 MI S WHITEHALL
031-0031	39°22'28.76" N	90°24'35.69" W	3550	3.52 MI S WHITEHALL
031-0032	39°25'41.00" N	90°33'31.39" W	450	1.7 MI S MORGAN CO LINE
031-0033	39°24'12.68" N	90°33'32.65" W	400	8 MI N ILL 108
031-0034	39°30'34.06" N	90°12'29.87" W	1800	0.78 MI S MORAGN CO LINE
031-0035	39°27'23.00" N	90°24'33.71" W	1100	1 MI N WHITEHALL
031-0036	39°22'10.62" N	90°32'47.40" W	375	4.5 MI S HILLVIEW
031-0037	39°21'59.68" N	90°32'41.16" W	375	4.6 MI S HILLVIEW
031-0038	39°17'33.85" N	90°34'08.51" W	500	1.1 MI W FAS 739
031-0039	39°21'08.96" N	90°32'38.21" W	400	4.5 MI N JCT 108
031-0040	39°20'48.67" N	90°32'37.15" W	400	4.1 MI N JCT 108
031-0041	39°15'23.40" N	90°33'18.51" W	500	2.2 MI N JCT 108
031-0042	39°18'19.93" N	90°13'16.23" W	1000	9.4 MI E CARROLLTON
031-0043	39°17'03.81" N	90°12'24.71" W	2200	0.1 MI N ROCKBRIDGE
031-0044	39°24'15.44" N	90°12'44.83" W	2000	3.5 MI N GREENFIELD
031-0045	39°18'20.08" N	90°14'26.94" W	1000	8.5 MI E CARROLLTON

**NOTE: LATITUDE AND LONGITUDE COORINATES WERE OBTAINED FROM GOOGLE EARTH

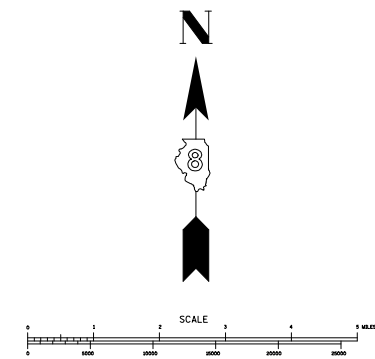


**GREENE COUNTY
ILLINOIS**



STRUCTURE #	LATITUDE	LONGITUDE	ADT	LOCATION DESCRIPTION
042-0001	39°09'02.28" N	90°20'52.31" W	5650	1.7 MI N JERSEYVILLE
042-0003	39°08'15.33" N	90°34'16.57" W	2250	1.6 MI SC CALHOUN CO LINE
042-0004	39°08'00.36" N	93°33'51.58" W	2250	2 MI W ILL 100
042-0009	39°11'21.12" N	90°33'04.66" W	750	GREENE CO LINE
042-0013	38°57'44.55" N	90°23'22.07" W	3950	AT CHATAQUA
042-0014	38°57'04.57" N	90°21'45.38" W	4750	AT ELSAH
042-0017	39°15'44.05" N	90°11'42.04" W	1750	ROCK BRIDGE; CO LINE
042-0023	38°56'21.42" N	90°17'18.84" W	2950	0.7 MI N CLIFTON TERR
042-0024	38°56'20.73" N	90°17'18.74" W	2950	0.7 MI N CLIFTON TERR
042-0025	39°04'43.61" N	90°19'22.87" W	4600	2.5 MI S JERSEYVILLE
042-0026	39°01'10.01" N	90°14'50.09" W	9350	7.6 MI S JERSEYVILLE
042-0027	39°01'10.37" N	90°14'49.24" W	9350	7.6 MI S JERSEYVILLE
042-0041	39°06'21.55" N	90°33'29.40" W	1800	0.1 MI E JCT RT. 100

**NOTE: LATITUDE AND LONGITUDE COORINATES WERE OBTAINED FROM GOOGLE EARTH



**JERSEY COUNTY
ILLINOIS**