

PROPOSED

MULTI-USE TRAIL IMPROVEMENTS

BILL KLINGNER TRAIL - 5TH STREET TO 12TH STREET

SECTION 10-P4003-03-BT

PROJECT NO. TE-03D6(118)

JOB NO.: C-96-237-14

ADAMS COUNTY, IL

SURFACE TRANSPORTATION / ENHANCEMENT PROGRAM

F.A.P. RTE.	SECTION	COUNTY	TOTAL SHEETS	SHEET NO.
	10-P4003-03-BT	ADAMS	131	1
ILLINOIS		CONTRACT NO. 93630		

INDEX OF SHEETS

- 1 COVER SHEET
- 2 STANDARDS, GENERAL NOTES, & APPLICATION TABLE
- 3-12 SUMMARY OF QUANTITIES
- 13-14 TYPICAL SECTIONS
- 15-21 SCHEDULE OF QUANTITIES
- 22-23 ALIGNMENT & BENCHMARK DATA
- 24-38 PLAN & PROFILE - BILL KLINGNER TRAIL
- 39 TRAFFIC CONTROL AND PROTECTION
- 40-41 PARKING LOT DETAILS
- 42 GEOMETRIC DETAILS
- 43-49 STORMWATER POLLUTION PREVENTION PLAN
- 50-56 LANDSCAPING, SIGNAGE, AND STRIPING PLAN
- 57-59 SN 001-8000 PLANS
- 60-71 SN 001-8001 PLANS
- 72-73 MISCELLANEOUS DETAILS
- 74-126 CROSS SECTIONS - BILL KLINGNER TRAIL
- 127-131 CROSS SECTION - COAL SERVICE DRIVE

HIGHWAY STANDARDS

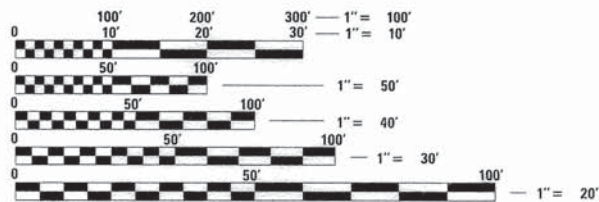
SEE SHEET 2 FOR LIST OF STANDARDS

DESIGN DESIGNATION

MULTI-USE PATH
DESIGN SPEED: 20 MPH

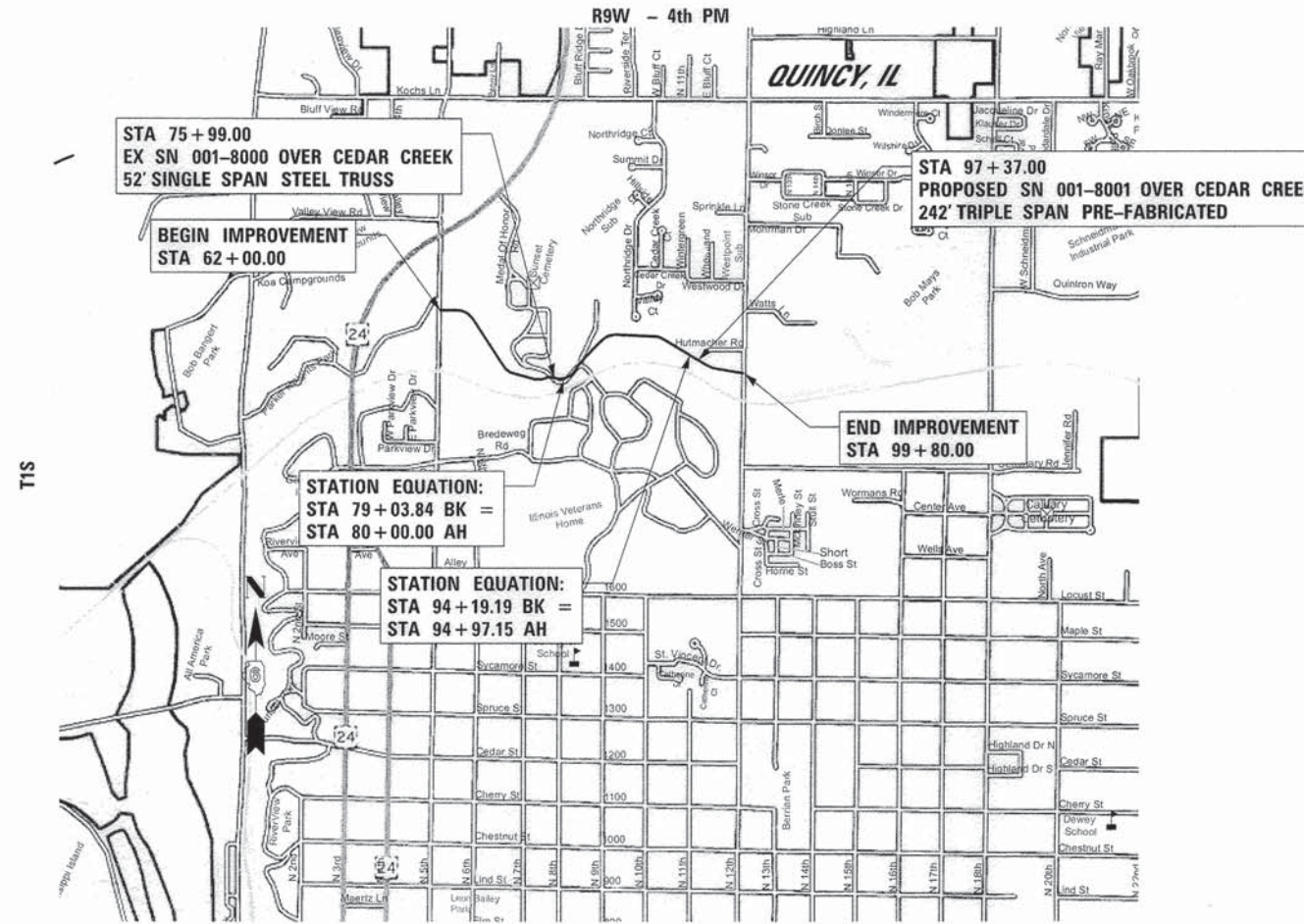
PROJECT DESCRIPTION

Project consists of construction of a new pedestrian /bike path along Cedar Creek, involving HMA pavement, aggregate shoulders, drainage structures, prefabricated bridges, retaining walls, erosion control, fencing, seeding, signage, pavement striping and other miscellaneous appurtenances.

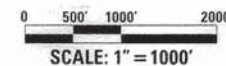


FULL SIZE PLANS HAVE BEEN PREPARED USING STANDARD ENGINEERING SCALES. REDUCED SIZED PLANS WILL NOT CONFORM TO STANDARD SCALES. IN MAKING MEASUREMENTS ON REDUCED PLANS, THE ABOVE SCALES MAY BE USED.

J.U.L.I.E.
JOINT UTILITY LOCATION INFORMATION FOR EXCAVATION
1-800-892-0123
OR 811



LOCATION MAP



NET LENGTH OF SECTION = 3,605.88 FT. = 0.683 MILES



LOCATION OF SECTION INDICATED THUS: - [black rectangle]

APPROVED January 16 20 15
Ron Fel
EXECUTIVE DIRECTOR, QUINCY PARK DISTRICT

PASSED 2-10 20 15
Juan J. Graham
DISTRICT SIX ENGINEER OF LOCAL ROADS & STREETS

PASSED 2-10 20 15
Ron Dubanbeau
DISTRICT SIX ENGINEER OF CONSTRUCTION

Releasing For Bid Based on Limited Review 2-10 20 15
Boyan J. Orskov
DEPUTY DIRECTOR OF HIGHWAYS, REGION FOUR ENGINEER

STATE OF ILLINOIS
DEPARTMENT OF TRANSPORTATION

Plans prepared by:
KLINGNER & ASSOCIATES, P.C.
Engineers • Architects • Surveyors
616 North 24th Street, Quincy, IL Ph (217)223-3670 - Fax (217)223-3603
4510 Paris Gravel Road, Hannibal, MO Ph (573)221-0020 - Fax (573)221-0012
610 N. 4th Street, Suite 100, Burlington, IA Ph (319)752-3603 - Fax (319)752-3605
49 North Prairie Street, Galesburg, IL Ph (309)342-4042 - Fax (309)341-3781
Internet Address: www.klingner.com
IL DESIGN FIRM NO.: 1842738

STEVE E. BANGE
REGISTERED PROFESSIONAL ENGINEER
STATE OF ILLINOIS NO. 062.053338
LICENSE EXPIRES NOVEMBER 30, 2015

Steve E. Bange 1/16/15
STEVE E. BANGE DATE

HIGHWAY STANDARDS

000001-06	STANDARD SYMBOLS, ABBREVIATIONS AND PATTERNS
001001-02	AREAS OF REINFORCEMENT BARS
280001-07	TEMPORARY EROSION CONTROL SYSTEMS
420001-08	PAVEMENT JOINTS
424001-08	PERPENDICULAR CURB RAMPS FOR SIDEWALKS
515001-03	NAME PLATE FOR BRIDGES
542301-03	PRECAST REINFORCED CONCRETE FLARED END SECTION
542401-01	METAL END SECTION FOR PIPE CULVERTS
602016-02	CATCH BASIN, TYPE D
602306-03	INLET, TYPE B
602401-03	MANHOLE, TYPE A
602406-06	MANHOLE, TYPE A, 600(1.8 M) DIAMETER
602601-03	PRECAST REINFORCED CONCRETE FLAT SLAB TOP
602701-02	MANHOLE STEPS
604001-04	FRAME AND LIDS, TYPE I
604036-03	GRATE, TYPE B
604066-02	FRAME AND LID, TYPE I5
606001-06	CONCRETE CURB TYPE B AND COMBINATION CONCRETE CURB AND GUTTER
606101-04	TYPE A GUTTER (INLET, OUTLET, AND ENTRANCE)
606106-04	OUTLET, TYPE L FOR TYPE A GUTTER
664001-02	CHAIN LINK FENCE
701001-02	OFF-ROAD OPERATIONS, 2L, 2W, MORE THAN 1500(4.5 M) AWAY
701301-04	LANE CLOSURE, 2L, 2W, SHORT TIME OPERATIONS
701501-06	URBAN LANE CLOSURE, 2L, 2W, UNDIVIDED
701901-04	TRAFFIC CONTROL DEVICES
720001-01	SIGN PANEL MOUNTING DETAILS
720006-04	SIGN PANEL ERECTION DETAILS
720011-01	METAL POSTS FOR SIGNS, MARKERS AND DELINEATORS
729001-01	APPLICATIONS OF TYPES A AND B METAL POSTS (FOR SIGNS & MARKERS)
780001-05	TYPICAL PAVEMENT MARKINGS
BLR 10-6	PCC PAVEMENT SPECIAL

GENERAL NOTES

- THE NOMINAL THICKNESS FOR BASE AND SURFACE COURSES ARE SHOWN ON THE TYPICAL SECTIONS, STANDARDS, SCHEDULES, OR SPECIAL DETAILS. THE CONSTRUCTED THICKNESS OF THE ABOVE ITEMS SHALL NOT BE LESS THAN 90 PERCENT OF THE NOMINAL THICKNESS AT ANY LOCATION.
- WHERE SECTION OR SUBSECTION MONUMENTS ARE ENCOUNTERED, THE ENGINEER SHALL BE NOTIFIED BEFORE SUCH MONUMENTS ARE REMOVED. THE CONTRACTOR SHALL PROTECT AND CAREFULLY PRESERVE ALL PROPERTY MARKERS AND MONUMENTS UNTIL THE OWNER AND AN AUTHORIZED SURVEYOR OR AGENT, HAS WITNESSED OR OTHERWISE REFERENCED THEIR LOCATION.
- ALL ELEVATIONS SHOWN REFER TO THE U.S.G.S. DATUM AT SEA LEVEL, UNLESS OTHERWISE NOTED.
- UTILITIES ARE SHOWN IN ACCORDANCE WITH THE BEST AVAILABLE INFORMATION, AND THEIR TRUE LOCATION IS NOT GUARANTEED TO BE AS SHOWN ON THE PLANS. IT WILL BE THE CONTRACTOR'S RESPONSIBILITY TO DETERMINE THE EXACT LOCATION OF ALL UTILITIES AND CARRY OUT HIS OR HER OPERATIONS ACCORDINGLY.
- THE FOLLOWING UTILITIES HAVE FACILITIES WITHIN THE LIMITS OF CONSTRUCTION:

CITY OF QUINCY	SANITARY SEWER	730 MAINE ST, QUINCY, IL	217-228-4555
CITY OF QUINCY	WATER	730 MAINE ST, QUINCY, IL	217-228-4580
AMERITECH	TELEPHONE	1640 HAZEL DELL RD, SPRINGFIELD IL	217-789-5504
AMEREN CIPS	ELECTRICAL	700 JERSEY, QUINCY, IL	1-800-789-2477
AMEREN CIPS	GAS	700 JERSEY, QUINCY, IL	217-257-7604
COMCAST	CABLE	2930 STATE ST. QUINCY, IL	217-222-5388
ILLINOIS VETERANS HOME	STORM SEWER		217-222-8641
- ADJUSTMENTS OF UTILITY LOCATIONS SHALL BE MADE BY THE OWNER, UNLESS OTHERWISE NOTED.
- THE DEPTH OF DRAINAGE STRUCTURES MAY BE ADJUSTED VERTICALLY DUE TO CONFLICTS WITH OTHER UTILITY LINES AS APPROVED BY THE ENGINEER. THIS WORK WILL BE CONSIDERED INCIDENTAL TO THE UNIT PRICE BID FOR THE DRAINAGE STRUCTURE AND NO ADDITIONAL COMPENSATION WILL BE ALLOWED.
- ANY REFERENCE TO A STANDARD IN THESE PLANS SHALL BE INTERPRETED TO MEAN THE EDITION, AS INDICATED BY THE SUB-NUMBER ON THE COVER SHEET.
- ALL DETAILS IN THESE PLANS SHALL GOVERN THE CONSTRUCTION OF THIS PROJECT, AND IN CASE OF CONFLICT WITH ANY STANDARD DRAWINGS INCLUDED, THE SAID DETAILS SHALL GOVERN.
- THE EXISTING ROAD SIGNS THAT INTERFERE WITH CONSTRUCTION SHALL BE REMOVED AND RELOCATED AS DIRECTED BY THE ENGINEER. THIS WORK WILL NOT BE PAID FOR SEPERATELY BUT SHALL BE CONSIDERED AS PART OF THE CONTRACT AND NO COMPENSATION WILL BE ALLOWED.
- EXISTING MAILBOXES SHALL BE TEMPORARILY RELOCATED FOR CONTINUED OPERATION AS NECESSARY DURING CONSTRUCTION. MAIL BOXES SHALL BE RELOCATED TO THEIR FINAL LOCATION AFTER CONSTRUCTION AS DIRECTED BY THE ENGINEER. THIS WORK WILL NOT BE PAID FOR SEPERATELY BUT SHALL BE CONSIDERED AS PART OF THE CONTRACT AND NO COMPENSATION WILL BE ALLOWED.
- THE FOLLOWING MIXTURE REQUIREMENTS ARE APPLICABLE FOR THIS PROJECT:

LOCATION(S):	TRAIL & SERVICE DRIVE	TRAIL & SERVICE DRIVE
MIXTURE USES:	SURFACE	BINDER
AC/PG:	PG 64-22	PG 64-22
DESIGN AIR VOIDS:	4% @ NDESIGN = 30	4% @ NDESIGN = 30
MIXTURE COMPOSITION: (GRADATION MIXTURE)	IL - 9.5L	IL - 19.0L
FRICTION AGGREGATE:	MIX "C"	N/A
MIXTURE WEIGHT:	112.0 LB/SQ YD/IN	112.0 LB/SQ YD/IN
QUALITY MANAGEMENT:	QC/QA	QC/QA

RATES OF APPLICATION

AGGREGATE (SURFACE, BASE, BASE, OR BACKFILL)	2.05 TON/CU YD
SUBBASE GRANULAR MATERIAL, TYPE C	1.80 TON/CU YD
STONE DUMPED RIPRAP	1.50 TON/CU YD
HOT-MIX ASPHALT:	
BITUMINOUS MATERIALS (PRIME COAT)	0.05 LB/SQ FT (ON MILLED & NON-MILLED HMA & CONCRETE)
	0.025 LB/SQ FT (BETWEEN LIFTS & ON BRICK)
	0.25 LB/SQ FT (ON AGGREGATE)
HOT-MIX ASPHALT SURFACE / BINDER	0.056 TON/SQ YD*IN
HOT-MIX ASPHALT SURFACE MIX D OR E	0.056 TON/SQ YD*IN
SODDING AREAS:	
NITROGEN FERTILIZER NUTRIENT	0.0186 LBS/SQ YD
PHOSPHOROUS FERTILIZER NUTRIENT	0.0011 LBS/SQ YD
POTASSIUM FERTILIZER NUTRIENT	0.0074 LBS/SQ YD
AGRICULTURAL GROUND LIMESTONE	0.000046 TON/SQ YD
SUPPLEMENTAL WATERING	0.009 UNITS/SQ YD (3 APPL. @ 3GAL/ SQ YD)
LIME FOR LIME MODIFIED SOILS, 12"	0.02 TON/SQ YD
WATER FOR LIME MODIFIED SOILS, 12"	0.007 UNITS/SQ YD (1 UNIT = 1000 GAL)
WATER FOR PLANTINGS	1 UNIT = 1000 GAL

FILE NAME: G:\HIT\100948\05 Plans\Phase2\10-P4003-03-BT - General Notes.dgn

	USER NAME = bgj	DESIGNED -	REVISED -	QUINCY PARK DISTRICT BILL KLINGNER TRAIL - 5TH ST. TO 12TH ST.	STANDARDS, GENERAL NOTES, & APPLICATION RATES	SECTION	COUNTY	TOTAL SHEETS	SHEET NO.
	PLOT SCALE = 20.0000' / in.	DRAWN -	REVISED -			10-P4003-03-BT	ADAMS	131	2
	PLOT DATE = 1/19/2015	CHECKED -	REVISED -			CONTRACT NO. 93630		ILLINOIS FED. AID PROJECT	
		DATE -	REVISED -			SCALE:	SHEET NO. OF	SHEETS	STA. TO STA.

ILLINOIS DEPARTMENT OF TRANSPORTATION

SUMMARY OF QUANTITIES

CODE NO.	ITEM	UNIT	TOTAL QUANTITY	CONSTRUCTION TYPE CODE		
				FACILITIES FOR BICYCLE/PEDESTRIAN TRAILS 0028	SN 001-8000 NEW CONSTRUCTION 0011	SN 001-8001 NEW CONSTRUCTION 0008
④ 25100115	MULCH, METHOD 2	ACRE	2.9	2.9		
④ 25100127	MULCH, METHOD 3A	ACRE	1.2	1.2		
④ 25100630	EROSION CONTROL BLANKET	SQ YD	4795	4795		
④ 25100900	TURF REINFORCEMENT MAT	SQ YD	5394	5394		
28000200	EARTH EXCAVATION FOR EROSION CONTROL	CU YD	67	67		
28000250	TEMPORARY EROSION CONTROL SEEDING	POUND	1000	1000		
28000305	TEMPORARY DITCH CHECKS	FOOT	768	768		
28000315	AGGREGATE DITCH CHECKS	TON	144	144		
28000400	PERIMETER EROSION BARRIER	FOOT	3049	3049		
28000500	INLET AND PIPE PROTECTION	EACH	13	13		
28100107	STONE RIPRAP, CLASS A4	SQ YD	342			342
28100807	STONE DUMPED RIPRAP, CLASS A4	TON	271	271		
28100809	STONE DUMPED RIPRAP, CLASS A5	TON	147	147		
28200200	FILTER FABRIC	SQ YD	747	524		223

* SPECIAL PROVISION

④ SPECIALTY ITEM

FILE NAME: G:\11\11\11\110809\05_P\Plan\Phase2\10-P4003-03-BT - Summary.dgn



USER NAME = bgj	DESIGNED -	REVISED -
PLOT SCALE = 20.0000' / 1" =	DRAWN -	REVISED -
PLOT DATE = 1/16/2015	CHECKED -	REVISED -
	DATE -	REVISED -

QUINCY PARK DISTRICT
BILL KLINGNER TRAIL - 5TH ST. TO 12TH ST.

SUMMARY OF QUANTITIES

SCALE: NONE SHEET NO. 2 OF 9 SHEETS STA. TO STA.

SECTION	COUNTY	TOTAL SHEETS	SHEET NO.
10-P4003-03-BT	ADAMS	131	4
CONTRACT NO. 93630		ILLINOIS FED. AID PROJECT	

ILLINOIS DEPARTMENT OF TRANSPORTATION

SUMMARY OF QUANTITIES

CONSTRUCTION TYPE CODE

CODE NO.	ITEM	UNIT	TOTAL QUANTITY	FACILITIES FOR BICYCLE/PEDESTRIAN TRAILS 0028	SN 001-8000 NEW CONSTRUCTION 0011	SN 001-8001 NEW CONSTRUCTION 0008
35100300	AGGREGATE BASE COURSE, TYPE A 4"	SQ YD	480	480		
35101800	AGGREGATE BASE COURSE, TYPE B 6"	SQ YD	6324	6324		
40200710	AGGREGATE SURFACE COURSE, TYPE A 10"	SQ YD	591	591		
* 40600275	BITUMINOUS MATERIALS (PRIME COAT)	POUND	9354	9354		
40603100	HOT-MIX ASPHALT BINDER COURSE, IL-19.0L, N30	TON	183	183		
40603305	HOT-MIX ASPHALT SURFACE COURSE, MIX "C", N30	TON	505	505		
42001300	PROTECTIVE COAT	SQ YD	838	838		
42400300	PORTLAND CEMENT CONCRETE SIDEWALK 6 INCH	SQ FT	2483	2483		
42400800	DETECTABLE WARNINGS	SQ FT	80	80		
44000100	PAVEMENT REMOVAL	SQ YD	568	568		
44000500	COMBINATION CURB AND GUTTER REMOVAL	FOOT	83	83		
44004250	PAVED SHOULDER REMOVAL	SQ YD	29	29		
50200100	STRUCTURE EXCAVATION	CU YD	47			47
50300225	CONCRETE STRUCTURES	CU YD	46.3			46.3

* SPECIAL PROVISION

① SPECIALTY ITEM

FILE NAME: Q:\11\11099\05 Plans\Phase2\10-P4003-03-BT - Summary.dgn

KLINGNER & ASSOCIATES, P.C. Engineers • Architects • Surveyors	USER NAME = bgj	DESIGNED -	REVISED -	QUINCY PARK DISTRICT BILL KLINGNER TRAIL - 5TH ST. TO 12TH ST.	SUMMARY OF QUANTITIES			SECTION	COUNTY	TOTAL SHEETS	SHEET NO.
	PLOT SCALE = 20.0000' / 1" =	DRAWN -	REVISED -					10-P4003-03-BT	ADAMS	131	5
	PLOT DATE = 1/19/2015	CHECKED -	REVISED -					CONTRACT NO. 93630			
	DATE -	REVISED -		SCALE: NONE	SHEET NO. 3 OF 9 SHEETS	STA.	TO STA.	ILLINOIS FED. AID PROJECT			

ILLINOIS DEPARTMENT OF TRANSPORTATION

SUMMARY OF QUANTITIES

CODE NO.	ITEM	UNIT	TOTAL QUANTITY	CONSTRUCTION TYPE CODE		
				FACILITIES FOR BICYCLE/PEDESTRIAN TRAILS 0028	SN 001-8000 NEW CONSTRUCTION 0011	SN 001-8001 NEW CONSTRUCTION 0008
50300300	PROTECTIVE COAT	SQ YD	42			42
50500405	FURNISHING AND ERECTING STRUCTURAL STEEL	POUND	880		880	
50800105	REINFORCEMENT BARS	POUND	1631	51		1580
50800205	REINFORCEMENT BARS, EPOXY COATED	POUND	9020			9020
51201400	FURNISHING STEEL PILES HP10X42	FOOT	91			91
51500100	NAME PLATES	EACH	1			1
51603000	DRILLED SHAFT IN SOIL	CU YD	4.7			4.7
51604000	DRILLED SHAFT IN ROCK	CU YD	5.2			5.2
54213447	END SECTIONS 12"	EACH	1	1		
54213450	END SECTIONS 15"	EACH	1	1		
54213453	END SECTIONS 18"	EACH	4	4		
54213459	END SECTIONS 24"	EACH	5	5		
54213465	END SECTIONS 30"	EACH	1	1		
54213471	END SECTIONS 36"	EACH	6	6		

* SPECIAL PROVISION

① SPECIALTY ITEM

FILE NAME: D:\IT\10093905_Plan\Phase2\10-P4003-03-BT - Summary.dgn



USER NAME = bgj	DESIGNED -	REVISED -
PLOT SCALE = 20.0000' / 1" =	DRAWN -	REVISED -
PLOT DATE = 1/16/2015	CHECKED -	REVISED -
	DATE -	REVISED -

QUINCY PARK DISTRICT
BILL KLINGNER TRAIL - 5TH ST. TO 12TH ST.

SUMMARY OF QUANTITIES	
SCALE: NONE	SHEET NO. 4 OF 9 SHEETS STA. TO STA.

SECTION	COUNTY	TOTAL SHEETS	SHEET NO.
10-P4003-03-BT	ADAMS	131	6
		CONTRACT NO. 93630	
ILLINOIS FED. AID PROJECT			

ILLINOIS DEPARTMENT OF TRANSPORTATION

SUMMARY OF QUANTITIES

CODE NO.	ITEM	UNIT	TOTAL QUANTITY	CONSTRUCTION TYPE CODE		
				FACILITIES FOR BICYCLE/PEDESTRIAN TRAILS 0028	SN 001-8000 NEW CONSTRUCTION 0011	SN 001-8001 NEW CONSTRUCTION 0008
58700300	CONCRETE SEALER	SQ FT	941			941
59100100	GEOCOMPOSITE WALL DRAIN	SQ YD	29			29
60100060	CONCRETE HEADWALLS FOR PIPE DRAINS	EACH	4	4		
60107600	PIPE UNDERDRAINS 4"	FOOT	155	155		
60211800	CATCH BASINS, TYPE D, 4' -DIAMETER, TYPE 1 FRAME, CLOSED LID	EACH	1	1		
60218400	MANHOLES, TYPE A, 4' -DIAMETER, TYPE 1 FRAME, CLOSED LID	EACH	2	2		
60221100	MANHOLES, TYPE A, 5' -DIAMETER, TYPE 1 FRAME, CLOSED LID	EACH	1	1		
60224030	MANHOLES, TYPE A, 6' -DIAMETER, TYPE 15 FRAME AND LID	EACH	1	1		
60240301	INLETS, TYPE B, TYPE 8 GRATE	EACH	6	6		
60258200	MANHOLES TO BE RECONSTRUCTED WITH NEW TYPE 1 FRAME, CLOSED LID	EACH	1	1		
60262900	INLETS TO BE RECONSTRUCTED WITH NEW TYPE 1 FRAME, OPEN LID	EACH	1	1		
60403400	GRATES, TYPE A	EACH	2	2		
60600095	CLASS SI CONCRETE (OUTLET)	CU YD	6.7	6.7		
60602500	CONCRETE GUTTER, TYPE A	FOOT	129	129		

* SPECIAL PROVISION

① SPECIALTY ITEM

FILE NAME: D:\111\110094\05 Plans\Phase2\10-P4003-03-BT - Summary.dgn

KLINGNER & ASSOCIATES, P.C. Engineers • Architects • Surveyors	USER NAME = bgj	DESIGNED -	REVISED -	QUINCY PARK DISTRICT BILL KLINGNER TRAIL - 5TH ST. TO 12TH ST.	SUMMARY OF QUANTITIES			SECTION	COUNTY	TOTAL SHEETS	SHEET NO.
	PLOT SCALE = 20.0000 "/>										

10-P4003-03-BT	ADAMS	131	8
CONTRACT NO. 93630			
ILLINOIS FED. AID PROJECT			

SCALE: NONE SHEET NO. 6 OF 9 SHEETS STA. TO STA.

ILLINOIS DEPARTMENT OF TRANSPORTATION

SUMMARY OF QUANTITIES

CODE NO.	ITEM	UNIT	TOTAL QUANTITY	CONSTRUCTION TYPE CODE		
				FACILITIES FOR BICYCLE/PEDESTRIAN TRAILS 0028	SN 001-8000 NEW CONSTRUCTION 0011	SN 001-8001 NEW CONSTRUCTION 0008
60603800	COMBINATION CONCRETE CURB AND GUTTER, TYPE B-6.12	FOOT	33	33		
* 60603900	COMBINATION CONCRETE CURB AND GUTTER, TYPE B-6.12 (ABUTTING EXISTING PAVEMENT)	FOOT	83	83		
* 60604100	COMBINATION CONCRETE CURB AND GUTTER, TYPE B-6.12 (MODIFIED)	FOOT	165	165		
① 63200310	GUARDRAIL REMOVAL	FOOT	68	68		
① 64300240	IMPACT ATTENUATORS (FULLY REDIRECTIVE, NARROW), TEST LEVEL 2	EACH	1	1		
① 66400305	CHAIN LINK FENCE, 6'	FOOT	84	84		
① 66407800	CHAIN LINK GATES, 6' X 16' DOUBLE	EACH	2	2		
① 66408200	CHAIN LINK GATES, 6' X 24' DOUBLE	EACH	1	1		
67100100	MOBILIZATION	L SUM	1	1		
70102620	TRAFFIC CONTROL AND PROTECTION, STANDARD 701501	L SUM	1	1		
72000100	SIGN PANEL - TYPE 1	SQ FT	178	178		
72900100	METAL POST - TYPE A	FOOT	481	481		
73000100	WOOD SIGN SUPPORT	FOOT	28	28		
① 78001100	PAINT PAVEMENT MARKING - LETTERS AND SYMBOLS	SQ FT	122	122		

* SPECIAL PROVISION

① SPECIALTY ITEM

FILE NAME: D:\1111\1111\1009\9\05_Plan\Phase2\10-P4003-03-BT - Summary.dgn



USER NAME = bgj	DESIGNED -	REVISED -
PLOT SCALE = 20,0000' / in.	DRAWN -	REVISED -
PLOT DATE = 1/16/2015	CHECKED -	REVISED -
	DATE -	REVISED -

QUINCY PARK DISTRICT
BILL KLINGNER TRAIL - 5TH ST. TO 12TH ST.

SUMMARY OF QUANTITIES

SCALE: NONE SHEET NO. 7 OF 9 SHEETS STA. TO STA.

SECTION	COUNTY	TOTAL SHEETS	SHEET NO.
10-P4003-03-BT	ADAMS	131	9
CONTRACT NO. 93630			
ILLINOIS FED. AID PROJECT			

ILLINOIS DEPARTMENT OF TRANSPORTATION

SUMMARY OF QUANTITIES

CODE NO.	ITEM	UNIT	TOTAL QUANTITY	CONSTRUCTION TYPE CODE		
				FACILITIES FOR BICYCLE/PEDESTRIAN TRAILS	SN 001-8000 NEW CONSTRUCTION 0011	SN 001-8001 NEW CONSTRUCTION 0008
① A2001724	TREE, ACER SACCHARUM (SUGAR MAPLE), 3" CALIPER, BALLED AND BURLAPPED	EACH	7	7		
① A2002366	TREE, BETULA NIGRA (RIVER BIRCH), 6' HEIGHT, CLUMP FORM, BALLED AND BURLAPPED	EACH	1	1		
① A2006432	TREE, QUERCUS ALBA (WHITE OAK), 4" CALIPER, BALLED AND BURLAPPED	EACH	5	5		
① A2007666	TREE, TAXODIUM DISTICHUM (COMMON BALD CYPRESS), 6' HEIGHT, CLUMP FORM, BALLED AND BURLAPPED	EACH	2	2		
① A2C025G5	TREE, CERCIS CANADENSIS (REDBUD), CONTAINER GROWN, 5-GALLON	EACH	4	4		
① B2000900	TREE, AMELANCHIER ARBOREA (DOWNY SERVICEBERRY), 6' HEIGHT, CLUMP FORM, BALLED AND BURLAPPED	EACH	9	9		
① C2007010	SHRUB, ROSA RADRAZZ (KNOCKOUT ROSE), CONTAINER GROWN, 3-GALLON	EACH	7	7		
① C2010436	SHRUB, SPIREA X VANHOUTTEI (VANHOUTTE SPIREA), 3' HEIGHT, BALLED AND BURLAPPED	EACH	10	10		
① C2011536	SHRUB, VIBURNUM X BURKWOODII MOHAWK (MOHAWK VIBURNUM), 3' HEIGHT, BALLED AND BURLAPPED	EACH	9	9		
① D2000624	EVERGREEN, JUNIPERUS CHINENSIS SEA GREEN (SEA GREEN JUNIPER), 2' WIDTH, BALLED AND BURLAPPED	EACH	4	4		
① K1003680	MULCH	SQ YD	30	30		
Δ Z0076600	TRAINEES	Hour	1500			1500
Δ Z0076604	TRAINEES TRAINING PROGRAM GRADUATE	Hour	1500			1500

① SPECIALTY ITEM
Δ=0042 TRAINEES

FILE NAME: D:\1111\110098\05_Plan\Phase2\10-44803-03-BT - Summary.dgn

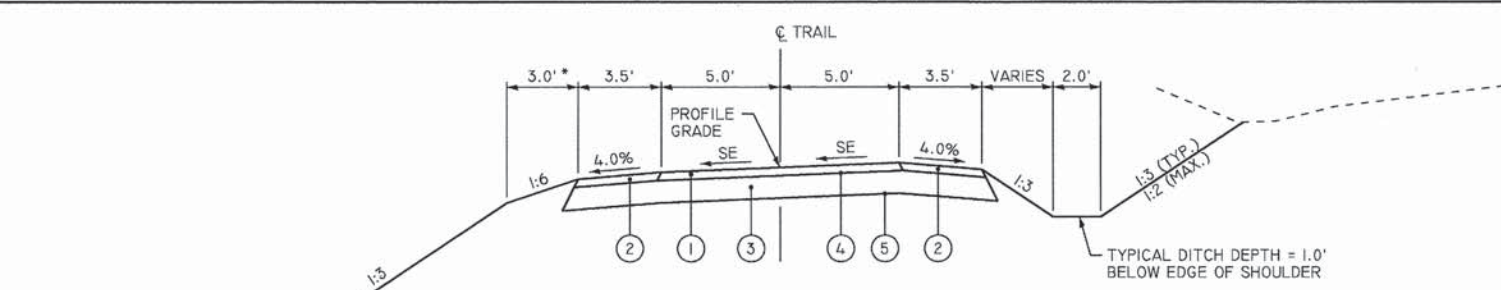
KLINGNER & ASSOCIATES, P.C.
Engineers • Architects • Surveyors

USER NAME = bgj	DESIGNED -	REVISED -
PLOT SCALE = 20.0000' / 1" =	DRAWN -	REVISED -
PLOT DATE = 1/16/2015	CHECKED -	REVISED -
	DATE -	REVISED -

QUINCY PARK DISTRICT
BILL KLINGNER TRAIL - 5TH ST. TO 12TH ST.

SCALE: SHEET NO. OF SHEETS STA. TO STA.

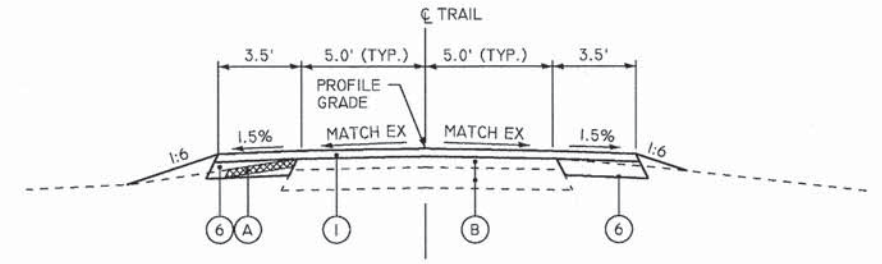
SECTION	COUNTY	TOTAL SHEETS	SHEET NO.
10-P4003-03-BT	ADAMS	131	12
CONTRACT NO. 93630			
ILLINOIS FED. AID PROJECT			



TYPICAL MULTI-USE TRAIL SECTION

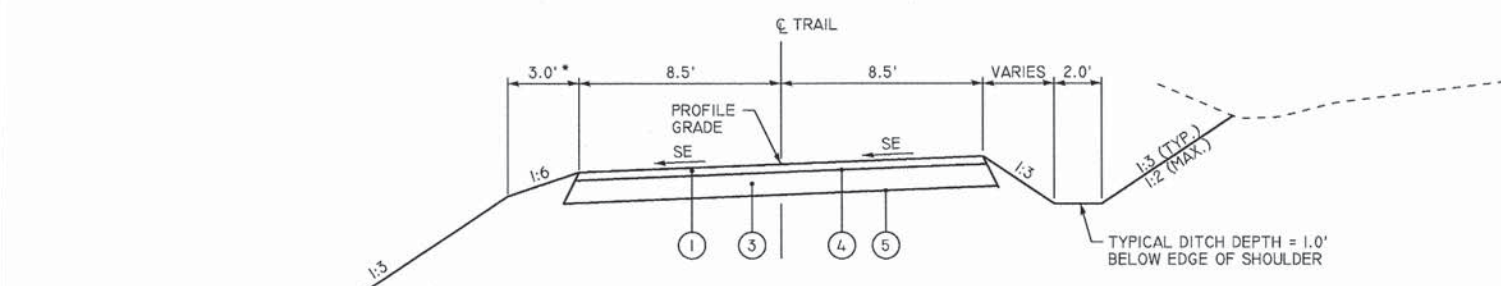
STA 62+23.38	TO	STA 62+50.00	1.5% HIGH SIDE RT
STA 62+50.00	TO	STA 62+80.00	SE TRANSITION
STA 62+80.00	TO	STA 66+78.00	1.5% HIGH SIDE LT
STA 66+78.00	TO	STA 67+08.00	SE TRANSITION
STA 67+08.00	TO	STA 74+10.00	1.5% HIGH SIDE RT
STA 74+10.00	TO	STA 74+25.00	SE TRANSITION
STA 82+10.00	TO	STA 82+32.00	SE TRANSITION
STA 82+32.00	TO	STA 82+70.00	1.5% HIGH SIDE RT
STA 83+70.00	TO	STA 83+00.00	SE TRANSITION
STA 83+00.00	TO	STA 85+76.00	1.5% HIGH SIDE LT
STA 85+76.00	TO	STA 86+06.00	SE TRANSITION
STA 86+06.00	TO	STA 91+14.00	1.5% HIGH SIDE RT
STA 91+14.00	TO	STA 91+44.00	SE TRANSITION
STA 91+44.00	TO	STA 92+18.00	1.5% HIGH SIDE LT
STA 92+18.00	TO	STA 92+48.00	SE TRANSITION
STA 92+48.00	TO	STA 92+94.00	1.5% HIGH SIDE RT
STA 92+94.00	TO	STA 93+24.00	SE TRANSITION
STA 93+24.00	TO	STA 94+04.00	1.5% HIGH SIDE LT
STA 94+04.00	TO	STA 95+12.00	SE TRANSITION
STA 95+12.00	TO	STA 96+00.49	1.5% HIGH SIDE RT
STA 98+70.00	TO	STA 99+80.00	1.5% HIGH SIDE RT

- * - 0' - FILL / DITCH DEPTH IS 0 TO 3'
- 3' - FILL / DITCH DEPTH IS GREATER THAN 3'
- 5' - FILL / DITCH DEPTH IS GREATER THAN 3' & RUSTIC WOOD POST AND RAIL FENCE



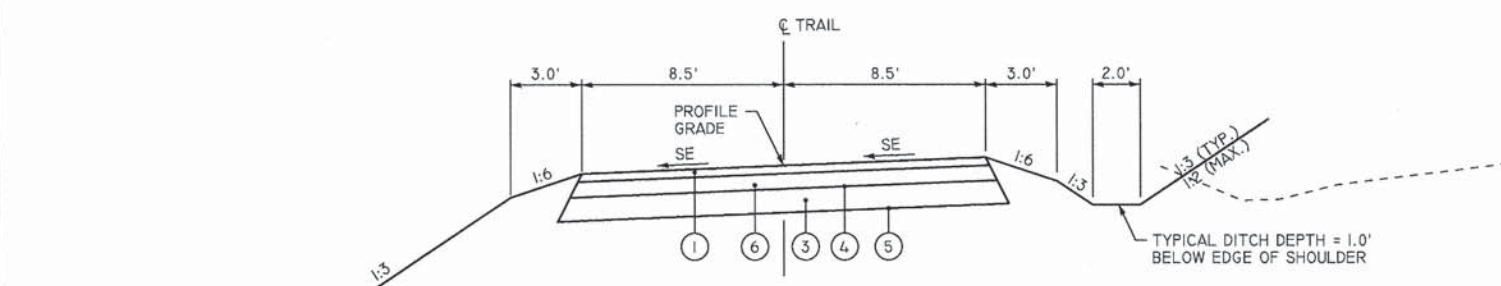
TYPICAL MULTI-USE TRAIL SECTION - VEHICULAR TRAFFIC ALLOWED

STA 76+37.09 TO STA 80+00.00 STATION EQUATION: 79+03.84 BK = 80+00.00 AH



TYPICAL MULTI-USE TRAIL SECTION - NO AGGREGATE SHOULDER

STA 74+25.00	TO	STA 74+40.00	SE TRANSITION
STA 74+40.00	TO	STA 75+25.00	1.5% HIGH SIDE LT
STA 81+29.00	TO	STA 81+59.00	SE TRANSITION
STA 81+59.00	TO	STA 82+02.00	1.5% HIGH SIDE LT
STA 82+02.00	TO	STA 82+10.00	SE TRANSITION



TYPICAL MULTI-USE TRAIL SECTION - VEHICULAR TRAFFIC ALLOWED

STA 75+25.00	TO	STA 75+63.14	1.5% HIGH SIDE LT
STA 80+00.00	TO	STA 81+29.00	1.5% HIGH SIDE RT

LEGEND

- ① HOT-MIX ASPHALT SURFACE COURSE, MIX 'C', N30, 2"
- ② AGGREGATE SHOULDERS (SPECIAL), 2"
- ③ AGGREGATE BASE COURSE, TYPE B 6"
- ④ BITUMINOUS MATERIALS (PRIME COAT)
- ⑤ GEOTECHNICAL FABRIC FOR GROUND STABILIZATION
- ⑥ HOT-MIX ASPHALT BINDER COURSE, IL-19.0L, N30, 4"
- ⑦ TYPE A GUTTER
- ⑧ AGGREGATE SURFACE COURSE, TYPE A, 10"
- (A) EXISTING ASPHALT SHOULDER, 6" - TO BE REMOVED
- (B) EXISTING ASPHALT PAVEMENT

FILE NAME: D:\11\10899_03_Plan\Plan\10899_03-BT - TopSections.dgn

KLINGNER & ASSOCIATES, P.C.
Engineers • Architects • Surveyors

USER NAME = seb	DESIGNED -	REVISED -
PLOT SCALE = 40.0000' / in.	DRAWN -	REVISED -
PLOT DATE = 1/19/2015	CHECKED -	REVISED -
	DATE -	REVISED -

QUINCY PARK DISTRICT
BILL KLINGNER TRAIL - 5TH ST. TO 12TH ST.

TYPICAL SECTIONS	
SCALE: NONE	SHEET NO. 1 OF 2 SHEETS
STA.	TO STA.

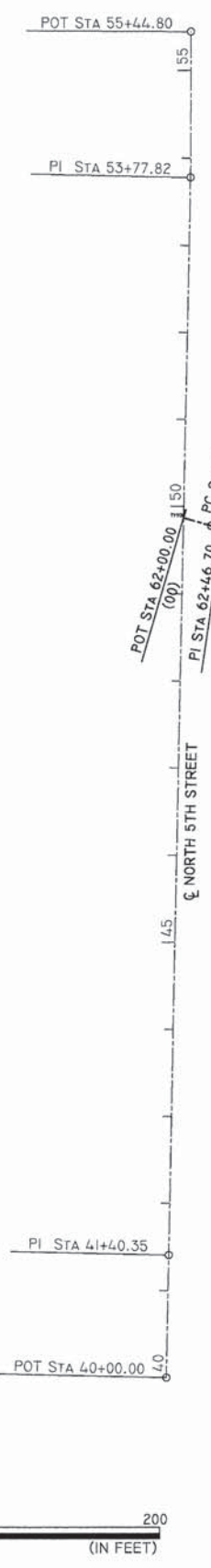
SECTION	COUNTY	TOTAL SHEETS	SHEET NO.
10-P4003-03-BT	ADAMS	131	13
CONTRACT NO. 93630			
[ILLINOIS] FED. AID PROJECT			

SIGNAGE SCHEDULE

TRAIL / STREET	PLAN LABEL	LOCATION	SIDE	FACING	MUTCD	SIZE		MESSAGE	72000100	X7200105	X7200205	72900100	73000100	
						IN	IN		SQ FT	SQ FT (SPECIAL)	SQ FT (SPECIAL)	FOOT	FOOT	
N 5TH ST	1	47+10 20.0'	RT	SOUTH	W11-15	36	36	BICYCLE / PEDESTRIAN WARNING SIGN	9.0			30.5		
				SOUTH	W11-15P	24	18	TRAIL CROSSING	3.0					
	2	48+10 20.0'	RT	SOUTH	D11-1	24	18	BICYCLE ROUTE	3.0			13.0		
				SOUTH	M6-1	12	9	ARROW RIGHT	0.8					
	3	49+68 20.0'	RT	SOUTH	W11-15	36	36	BICYCLE / PEDESTRIAN WARNING SIGN	9.0			29.5		
				SOUTH	W16-7P	24	12	DIAGONAL ARROW	2.0					
	4	50+05 20.0'	LT	NORTH	W11-15	36	36	BICYCLE / PEDESTRIAN WARNING SIGN	9.0			29.5		
				NORTH	W16-7P	24	12	DIAGONAL ARROW	2.0					
	5	51+05 20.0'	LT	NORTH	D11-1	24	18	BICYCLE ROUTE	3.0			13.0		
NORTH				M6-1	12	9	ARROW LEFT	0.8						
6	52+05 20.0'	LT	NORTH	W11-15	36	36	BICYCLE / PEDESTRIAN WARNING SIGN	9.0			30.5			
			NORTH	W11-15P	24	18	TRAIL CROSSING	3.0						
7	50+75 63.3'	LT	EAST	R7-8	12	18	HANDICAPPED PARKING	1.5			10.1			
			EAST	R7-1	12	16	\$250 FINE	1.3						
8	50+40 36.0'	LT	EAST		70	36	RECREATION SIGN 1			17.5		27.5		
			EAST		70	12	RECREATION SIGN 2		5.8					
9	49+81 21.0'	LT	WEST	R1-1	24	24	STOP	4.0			11.0			
			EAST	R5-3	24	24	NO MOTOR VEHICLES	4.0						
BILL KLINGNER TRAIL	10	62+20 10.5'	RT	EAST	R1-1	24	24	STOP	4.0			12.8		
				EAST	W4-4P	30	18	CROSS TRAFFIC DOES NOT STOP	3.8					
	11	62+26 10.5'	LT	WEST	R5-3	24	24	NO MOTOR VEHICLES	4.0			11.0		
	12	62+70 10.5'	RT	EAST	W3-1	18	18	STOP AHEAD	2.3			10.5		
	13	67+50 10.5'	LT	EAST/WEST		24	6	NORTH 6TH STREET		1.0		9.0		
	14	73+00 10.5'	LT	EAST/WEST		24	6	NORTH 7TH STREET		1.0		9.0		
	15	74+15 10.5'	RT	WEST	W2-2	24	24	INTERSECTION WARNING	4.0			11.0		
	16	74+25 10.5'	LT	EAST	R5-3	24	24	NO MOTOR VEHICLES	4.0			11.0		
	17	74+25 10.5'	RT	WEST	R4-16	12	18	KEEP RT EXCEPT TO PASS	1.5			12.8		
				EAST	R5-3	24	24	NO MOTOR VEHICLES	4.0					
	19	75+62 10.5'	RT	WEST	W16-1P	18	24	SHARE THE ROAD	3.0			11.0		
	20	77+15 10.5'	LT	EAST/WEST		24	6	NORTH 8TH STREET		1.0		9.0		
	21	80+65 10.5'	LT	EAST	W16-1P	18	24	SHARE THE ROAD	3.0			11.0		
	25	81+10 10.5'	LT	EAST	R4-16	12	18	KEEP RT EXCEPT TO PASS	1.5			12.8		
				WEST	R5-3	24	24	NO MOTOR VEHICLES	4.0					
	26	81+10 10.5'	RT	WEST	R5-3	24	24	NO MOTOR VEHICLES	4.0			11.0		
	27	82+10 10.5'	LT	EAST	W2-1	24	24	INTERSECTION WARNING	4.0			11.0		
	28	85+05 10.5'	LT	EAST/WEST		24	6	NORTH 9TH STREET		1.0		9.0		
	29	87+00 10.5'	LT	EAST	W7-5	18	18	HILL	2.3			10.5		
	30	90+20 10.5'	RT	EAST/WEST		24	6	NORTH 10TH STREET		1.0		9.0		
	31	94+00 10.5'	RT	WEST	W7-5	18	18	HILL	2.3			10.5		
	32	96+00 10.5'	RT	EAST/WEST		24	6	NORTH 11TH STREET		1.0		9.0		
				NORTH	R1-1	36	36	STOP	9.0			33.5		
	SUNSET CEMETERY ROAD	18	1+62 10.0'	RT	NORTH	R3-1	36	36	NO RIGHT TURN	9.0				
					SOUTH	R1-1	36	36	STOP	9.0			33.5	
	COAL SERVICE ROAD	22	3+39 12.0'	RT	SOUTH	R3-1	36	36	NO RIGHT TURN	9.0				
					SOUTH	R1-1	36	36	STOP	9.0			33.5	
		23	4+18 12.0'	LT	NORTH	R1-1	36	36	STOP	9.0			33.5	
					NORTH	R3-2	36	36	NO LEFT TURN	9.0				
		24	4+25 12.0'	RT	SOUTH	R5-10B	30	18	NO PEDESTRIANS OR BICYCLES	3.8				
	SOUTH				R5-10B	30	18	NO PEDESTRIANS OR BICYCLES	3.8			12.0		
	TOTALS:									178	12	18	481	28

FILE NAME: D:\171\es\1128298\05_P\Plan\Phase2\18-P4003-03-BT - Schedule.dgn

<p>Engineers • Architects • Surveyors</p>	USER NAME = seob	DESIGNED -	REVISED -	QUINCY PARK DISTRICT BILL KLINGNER TRAIL - 5TH ST. TO 12TH ST.	SCHEDULE OF QUANTITIES			SECTION	COUNTY	TOTAL SHEETS	SHEET NO.
	PLOT SCALE = 40.0000' / 1" =	DRAWN -	REVISED -					10-P4003-03-BT	ADAMS	131	21
	PLOT DATE = 1/19/2015	CHECKED -	REVISED -		SCALE: NONE	SHEET NO. 7 OF 7 SHEETS	STA.	TO STA.	CONTRACT NO. 93630		
		DATE -	REVISED -						ILLINOIS FED. AID PROJECT		



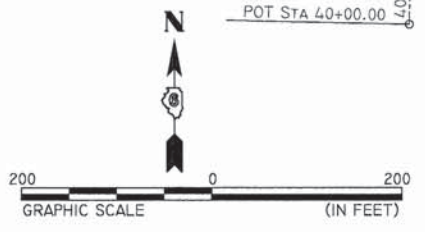
PROP. CURVE A01A	PROP. CURVE A02	PROP. CURVE A03	PROP. CURVE A04	PROP. CURVE A05	PROP. CURVE A06	EXIST. CURVE A07	EXIST. CURVE A08	EXIST. CURVE A09
(02) PI STA. = 62+46.70 Δ= 15° 37' 36" (LT) D = 57' 17" 45" R = 100.00' T = 13.72' L = 27.27' E = 0.94' (01) P.C. STA = 62+32.98 (03) P.T. STA = 62+60.26	(05) PI STA. = 64+14.35 Δ= 40° 37' 36" (RT) D = 14° 19' 26" R = 400.00' T = 148.07' L = 283.63' E = 26.53' (04) P.C. STA = 62+66.28 (06) P.T. STA = 65+49.90	(08) PI STA. = 66+50.77 Δ= 25° 00' 00" (RT) D = 57' 17" 45" R = 100.00' T = 22.17' L = 43.63' E = 2.43' (07) P.C. STA = 66+28.60 (09) P.T. STA = 66+72.23	(11) PI STA. = 67+47.01 Δ= 40° 48' 10" (LT) D = 57' 17" 45" R = 100.00' T = 37.19' L = 71.21' E = 6.69' (10) P.C. STA = 67+09.81 (12) P.T. STA = 67+81.03	(14) PI STA. = 73+53.84 Δ= 40° 00' 00" (LT) D = 38° 11' 50" R = 150.00' T = 54.60' L = 104.72' E = 9.63' (13) P.C. STA = 72+99.24 (15) P.T. STA = 74+03.96	(17) PI STA. = 75+05.176 Δ= 45° 28' 32" (RT) D = 38° 11' 50" R = 150.00' T = 62.86' L = 119.06' E = 12.64' (16) P.C. STA = 74+42.30 (18) P.T. STA = 75+61.36	(21) PI STA. = 77+01.82 Δ= 76° 50' 15" (LT) D = 73° 40' 39" R = 77.77' T = 61.68' L = 104.29' E = 21.49' (19) P.C. STA = 76+40.14 (22) P.T. STA = 77+44.43	(23) PI STA. = 78+11.69 Δ= 12° 18' 58" (LT) D = 9° 11' 27" R = 623.41' T = 67.26' L = 134.01' E = 3.62' (22) P.C. STA = 77+44.43 (24) P.T. STA = 78+78.44	(25) PI STA. = 78+89.02 Δ= 12° 05' 18" (RT) D = 57' 17" 45" R = 100.00' T = 21.10' E = 0.56' (24) P.C. STA = 78+78.44 (26) P.T. STA = 78+99.53

PROP. CURVE SUNSET02

(30) PI STA. = 1+60.26
Δ= 29° 52' 49" (RT)
D = 57' 17" 45"
R = 100.00'
T = 26.68'
L = 52.15'
E = 3.50'
(31) P.C. STA = 1+33.57
(29) P.T. STA = 1+85.72



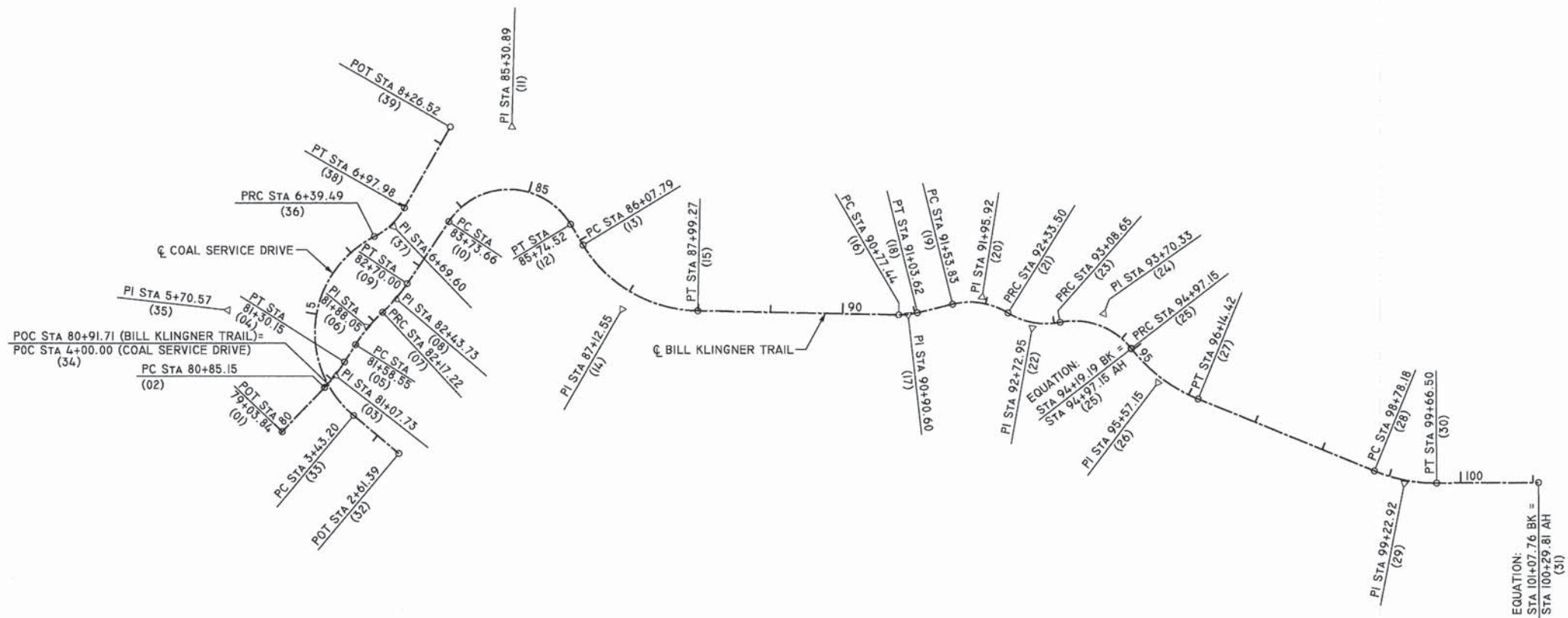
CONTROL POINTS		
POINT #	NORTHING	EASTING
00	1,201,074.3224	1,948,578.4185
01	1,201,065.1066	1,948,610.0870
02	1,201,061.2724	1,948,623.2624
03	1,201,061.1289	1,948,636.9835
04	1,201,061.0660	1,948,643.0042
05	1,201,059.5180	1,948,791.0660
06	1,200,961.9362	1,948,902.4325
07	1,200,910.0759	1,948,961.6187
08	1,200,895.4657	1,948,978.2928
09	1,200,875.1775	1,948,987.2301
10	1,200,840.7816	1,949,002.3822
11	1,200,806.7453	1,949,017.3759
12	1,200,790.7788	1,949,050.9668
13	1,200,568.3136	1,949,518.9977
14	1,200,544.8761	1,949,568.3065
15	1,200,558.6169	1,949,621.1446
16	1,200,568.2675	1,949,658.2539
17	1,200,584.0891	1,949,719.0931
18	1,200,551.8080	1,949,773.0343
19	1,200,511.3517	1,949,840.6359
20	1,200,509.977	1,949,842.934
21	1,200,479.6791	1,949,893.5604
22	1,200,524.0009	1,949,936.4525
23	1,200,572.3355	1,949,983.2279
24	1,200,629.5351	1,950,018.6168
25	1,200,638.5394	1,950,024.1876
26	1,200,646.1774	1,950,031.5206
27	1,200,649.282	1,950,034.501
28	1,200,559.427	1,949,758.567
29	1,200,572.8122	1,949,753.6021
30	1,200,597.8298	1,949,744.3227
31	1,200,614.8989	1,949,723.8134
32	1,200,634.912	1,949,699.766



FILE NAME: G:\11\105\1109\05_Plan\Phase2\10-P4003-03-BT - Alignment\10.dgn

<p>Engineers • Architects • Surveyors</p>	USER NAME = zeb	DESIGNED -	REVISED -	QUINCY PARK DISTRICT BILL KLINGNER TRAIL - 5TH ST. TO 12TH ST.	ALIGNMENT AND BENCHMARK DATA		SECTION	COUNTY	TOTAL SHEETS	SHEET NO.
	PLOT SCALE = 200.0000' / 1"	DRAWN -	REVISED -		10-P4003-03-BT	ADAMS	131	22		
	PLOT DATE = 1/19/2015	CHECKED -	REVISED -		SCALE: 1"=100' SHEET NO. 1 OF 2 SHEETS STA. TO STA.		CONTRACT NO. 93630			
		DATE -	REVISED -		[ILLINOIS] FED. AID PROJECT					

PROP. CURVE NB1 (03) PI STA. = 81+07.73 Δ = 11° 27' 33" (LT) D = 25° 27' 53" R = 225.00' T = 22.58' L = 45.00' E = 1.13' (02) P.C. STA = 80+85.15 (04) P.T. STA = 81+30.15	PROP. CURVE NB2 (06) PI STA. = 81+88.05 Δ = 14° 56' 25" (RT) D = 25° 27' 53" R = 225.00' T = 29.50' L = 58.67' E = 1.93' (05) P.C. STA = 81+58.55 (07) P.T. STA = 82+17.22	PROP. CURVE NB3 (08) PI STA. = 82+43.73 Δ = 13° 26' 26" (LT) D = 25° 27' 53" R = 225.00' T = 26.51' L = 52.78' E = 1.56' (07) P.C. STA = 82+17.22 (09) P.T. STA = 82+70.00	PROP. CURVE NB4 (11) PI STA. = 85+30.89 Δ = 115° 05' 10" (RT) D = 57° 17' 45" R = 100.00' T = 157.23' L = 200.86' E = 86.34' (10) P.C. STA = 83+73.66 (12) P.T. STA = 85+74.52	PROP. CURVE NB5 (14) PI STA. = 87+12.55 Δ = 57° 44' 31" (LT) D = 30° 09' 20" R = 190.00' T = 104.76' L = 191.48' E = 26.97' (13) P.C. STA = 86+07.79 (15) P.T. STA = 87+99.27	PROP. CURVE NB6 (17) PI STA. = 90+90.60 Δ = 15° 00' 00" (LT) D = 57° 17' 45" R = 100.00' T = 13.17' L = 26.18' E = 0.86' (16) P.C. STA = 90+77.44 (18) P.T. STA = 91+03.62	PROP. CURVE NB7 (20) PI STA. = 91+95.92 Δ = 45° 39' 01" (RT) D = 57° 17' 45" R = 100.00' T = 42.09' L = 79.67' E = 8.50' (19) P.C. STA = 91+53.83 (21) P.T. STA = 92+33.50	PROP. CURVE NB8 (22) PI STA. = 92+72.95 Δ = 43° 03' 17" (LT) D = 57° 17' 45" R = 100.00' T = 39.45' L = 75.14' E = 7.50' (21) P.C. STA = 92+33.50 (23) P.T. STA = 93+08.65	PROP. CURVE NB9 (24) PI STA. = 93+70.33 Δ = 63° 20' 15" (RT) D = 25° 27' 53" R = 100.00' T = 61.69' L = 110.54' E = 17.50' (23) P.C. STA = 93+08.65 (25) P.R.C. STA = 94+19.19	PROP. CURVE NC1 (26) PI STA. = 95+57.15 Δ = 29° 51' 46" (LT) D = 25° 27' 53" R = 225.00' T = 60.00' L = 117.27' E = 7.86' (25) P.R.C. STA = 94+97.15 (27) P.T. STA = 96+14.42	PROP. CURVE NC2 (29) PI STA. = 99+22.92 Δ = 22° 29' 31" (LT) D = 25° 27' 53" R = 225.00' T = 44.74' L = 88.33' E = 4.40' (28) P.C. STA = 98+78.18 (30) P.T. STA = 99+66.50
--	--	--	--	---	--	--	--	--	---	--



CONTROL POINTS		
POINT #	NORTHING	EASTING
01	1,200,649.2817	1,950,034.5010
02	1,200,710.7065	1,950,093.4731
03	1,200,726.9915	1,950,109.1078
04	1,200,746.0580	1,950,121.1955
05	1,200,770.0425	1,950,136.4012
06	1,200,794.9594	1,950,152.1979
07	1,200,814.9614	1,950,173.8845
08	1,200,832.9360	1,950,193.3728
09	1,200,854.9480	1,950,208.1496
10	1,200,941.0115	1,950,265.9241
11	1,201,071.5539	1,950,353.5575
12	1,200,936.8397	1,950,434.6315
13	1,200,908.3363	1,950,451.7854
14	1,200,818.5775	1,950,505.8043
15	1,200,816.3515	1,950,610.5408
16	1,200,810.4407	1,950,888.6468
17	1,200,810.1609	1,950,901.8090
18	1,200,813.2974	1,950,914.5952
19	1,200,825.2597	1,950,963.3616
20	1,200,835.2865	1,951,004.2375
21	1,200,813.0658	1,951,039.9813
22	1,200,792.2397	1,951,073.4817
23	1,200,799.8927	1,951,112.1785
24	1,200,811.8604	1,951,172.6922
25	1,200,763.1518	1,951,210.5420
26	1,200,715.7741	1,951,247.3575
27	1,200,693.0188	1,951,302.8752
28	1,200,592.9872	1,951,546.9284
29	1,200,576.0196	1,951,588.3248
30	1,200,576.1790	1,951,633.0633
31	1,200,576.6824	1,951,774.3212
32	1,200,618.9682	1,950,196.1021
33	1,200,671.6605	1,950,133.5189
34	1,200,715.5022	1,950,097.9448
35	1,200,818.1038	1,949,959.5864
36	1,200,920.3753	1,950,162.6595
37	1,200,933.9184	1,950,189.5512
38	1,200,960.0580	1,950,204.4946
39	1,201,071.6464	1,950,268.2876

PROP. CURVE COAL01 (35) PI STA. = 5+70.57 Δ = 113° 10' 24" (RT) D = 38° 11' 50" R = 150.00' T = 227.37' L = 296.29' E = 122.39' (33) P.C. STA = 3+43.20 (36) P.T. STA = 6+39.49	PROP. CURVE COAL02 (37) PI STA. = 6+69.60 Δ = 33° 30' 49" (LT) D = 57° 17' 45" R = 100.00' T = 30.11' L = 58.49' E = 4.43' (36) P.C. STA = 6+39.49 (38) P.T. STA = 6+97.98
---	--

FILE NAME: D:\11\11809\05_Plan\Phase2\10-P-4003-03-BT - Alignment.dwg

KLINGNER & ASSOCIATES, P.C. Engineers • Architects • Surveyors	USER NAME = bgj	DESIGNED -	REVISED -
	PLOT SCALE = 200.0000' / in.	DRAWN -	REVISED -
	PLOT DATE = 1/16/2015	CHECKED -	REVISED -
		DATE -	REVISED -

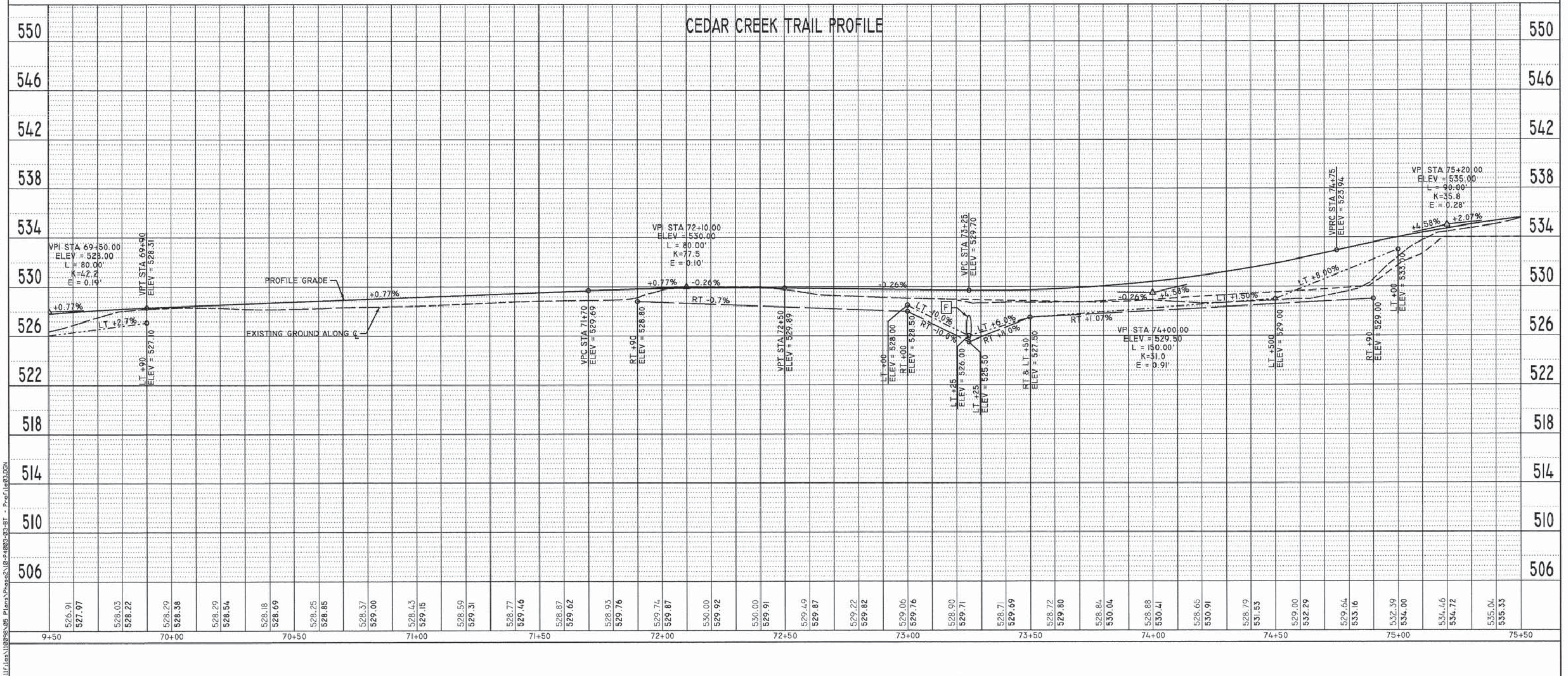
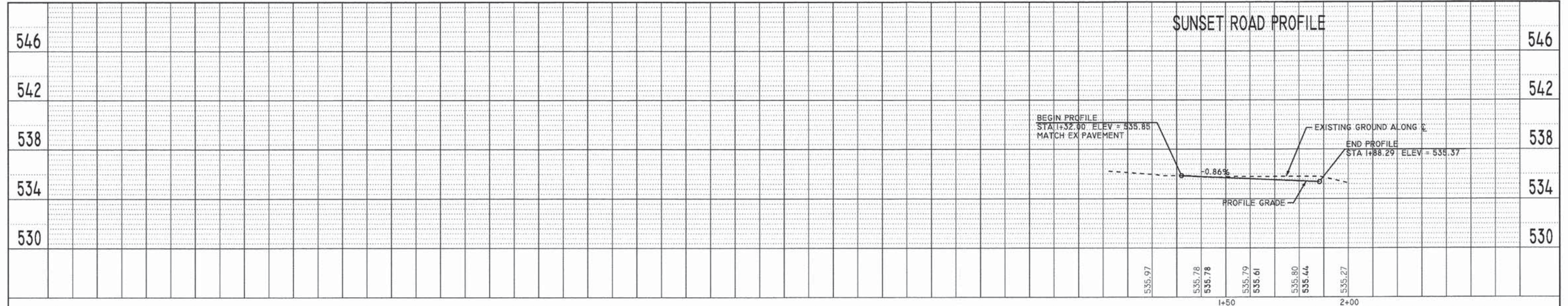
**QUINCY PARK DISTRICT
BILL KLINGNER TRAIL – 5TH ST. TO 12TH ST.**

ALIGNMENT AND BENCHMARK DATA			
SCALE: 1"=100'	SHEET NO. 2 OF 2 SHEETS	STA.	TO STA.

SECTION	COUNTY	TOTAL SHEETS	SHEET NO.
10-P4003-03-BT	ADAMS	131	23
CONTRACT NO. 93630			
ILLINOIS FED. AID PROJECT			

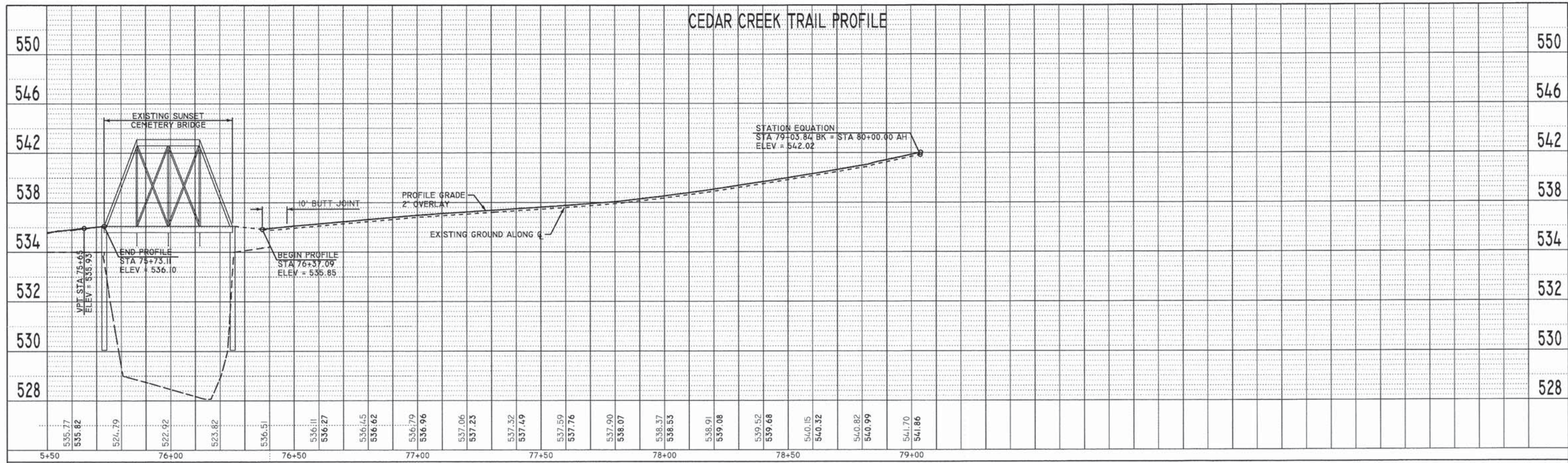
PLAN	SURVEYED	DATE
	PLOTTED	
	CHECKED	
	BY	
	NO.	
	NOTE BOOK	
	NO.	
	STRUCTURE	
	NOTATIONS	
	CHKD	

PROFILE	SURVEYED	DATE
	PLOTTED	
	CHECKED	
	BY	
	NO.	
	NOTE BOOK	
	NO.	
	STRUCTURE	
	NOTATIONS	
	CHKD	

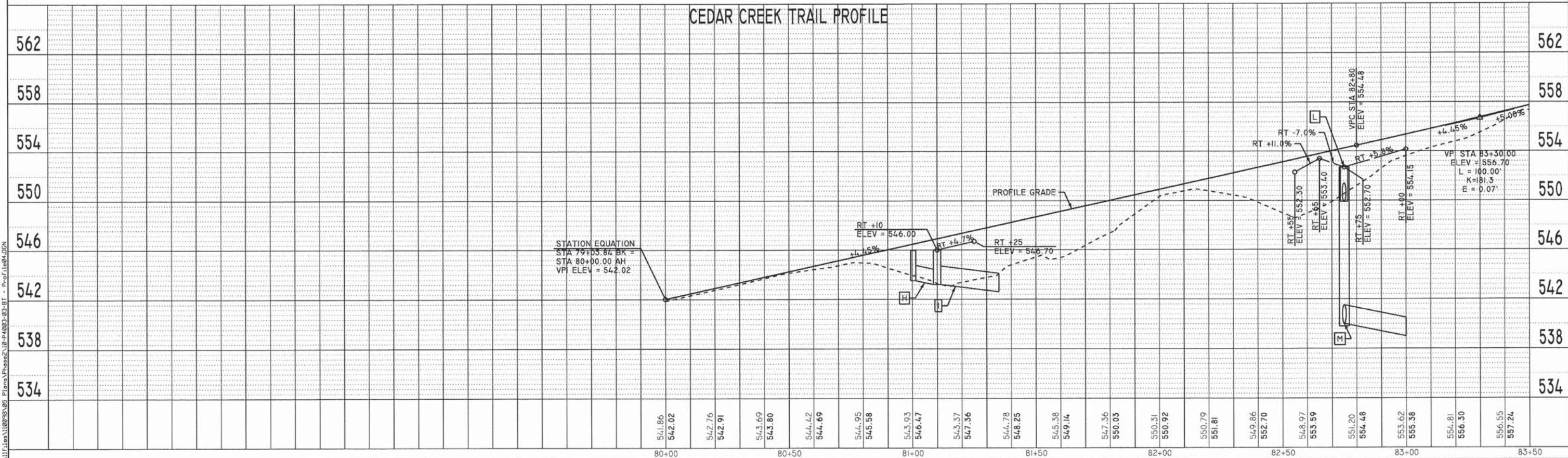


FILE NAME: G:\1\res\1\08\08\08\Plans\Phase2\18-P4003-03-BT - Profile.dwg	USER NAME = bgj	DESIGNED -	REVISED -	QUINCY PARK DISTRICT BILL KLINGNER TRAIL - 5TH ST. TO 12TH ST.	PROFILE VIEW - STA 69+50 TO 75+50		SECTION	COUNTY	TOTAL SHEETS	SHEET NO.	
	PLOT SCALE = 48.0000' / in.	DRAWN -	REVISED -		SCALE: 1"=20'	SHEET NO. 6 OF 15 SHEETS	STA. 69+50 TO STA. 75+50	10-P4003-03-BT	ADAMS	131	29
	PLOT DATE = 1/16/2015	CHECKED -	REVISED -								
		DATE -	REVISED -								
							CONTRACT NO. 93630		ILLINOIS FED. AID PROJECT		

PLAN	SURVEYED	DATE
	PLOTTED	
	CHECKED	
	BY	
	NO.	
	DATE	



PROFILE	SURVEYED	DATE
	PLOTTED	
	CHECKED	
	BY	
	NO.	
	DATE	



KLINGNER & ASSOCIATES, P.C.
Engineers • Architects • Surveyors

USER NAME = bgj	DESIGNED -	REVISED -
PLOT SCALE = 48.0000' / in.	DRAWN -	REVISED -
PLOT DATE = 1/16/2015	CHECKED -	REVISED -
	DATE -	REVISED -

QUINCY PARK DISTRICT
BILL KLINGNER TRAIL - 5TH ST. TO 12TH ST.

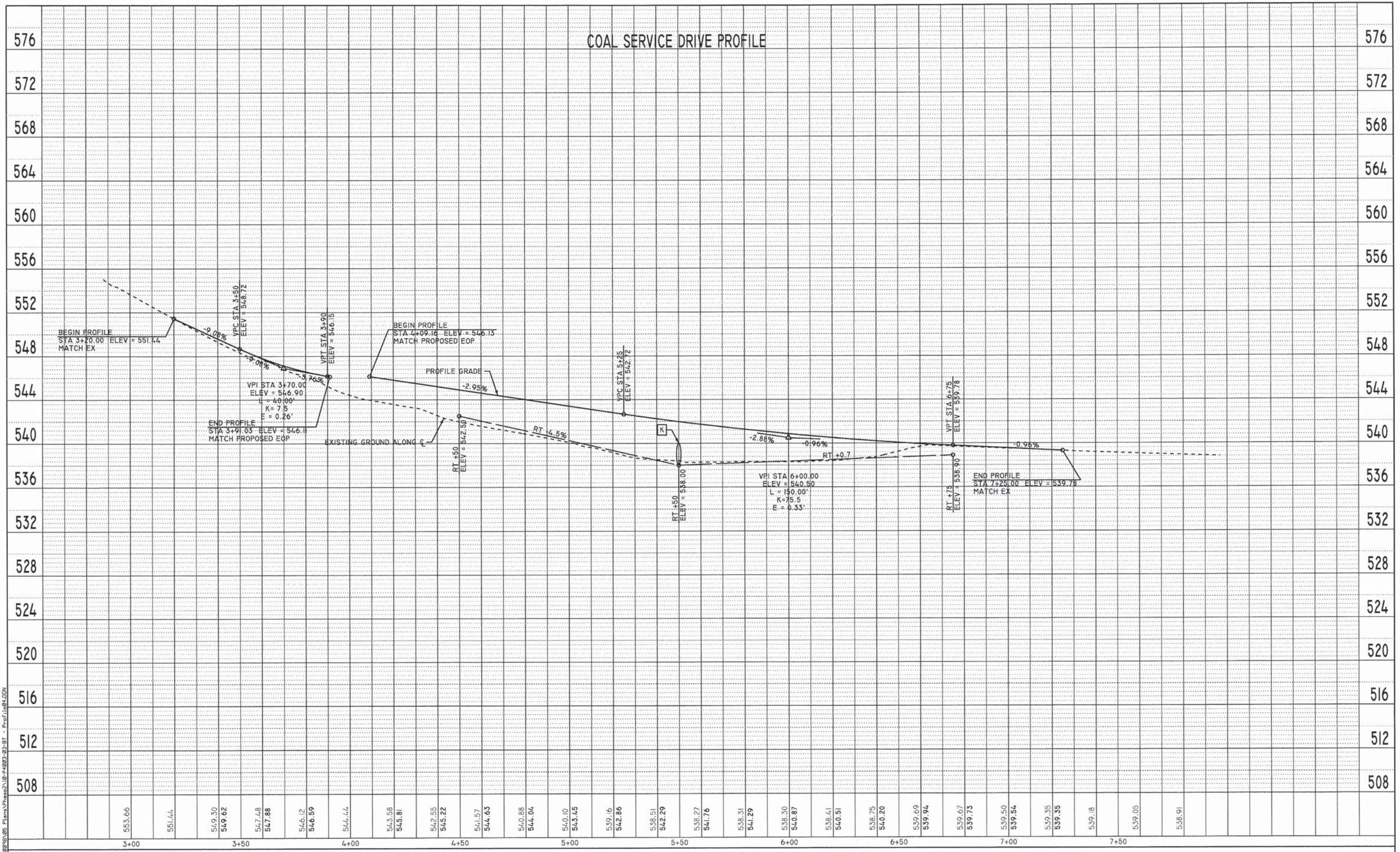
PROFILE VIEW - STA 75+50 TO 83+50
SCALE: 1"=20' SHEET NO. 8 OF 15 SHEETS STA. 75+50 TO STA. 83+50

F.A. RTE.	SECTION	COUNTY	TOTAL SHEETS	SHEET NO.
	10-P4003-03-BT	ADAMS	131	31
			CONTRACT NO. 93630	
ILLINOIS FED. AID PROJECT				

COAL SERVICE DRIVE PROFILE

PLAN	SURVEYED	DATE
	PLOTTED	
	CHECKED	
	RT OF WAY CHECKED	
	NO. _____	
	NOTE BOOK	
	NO. _____	
	FILE NAME	

PROFILE	SURVEYED	DATE
	PLOTTED	
	CHECKED	
	RT OF WAY CHECKED	
	NO. _____	
	NOTE BOOK	
	NO. _____	
	FILE NAME	



USER NAME = bgj	DESIGNED -	REVISED -
PLOT SCALE = 48,000" / in.	DRAWN -	REVISED -
PLOT DATE = 1/16/2015	CHECKED -	REVISED -
	DATE -	REVISED -

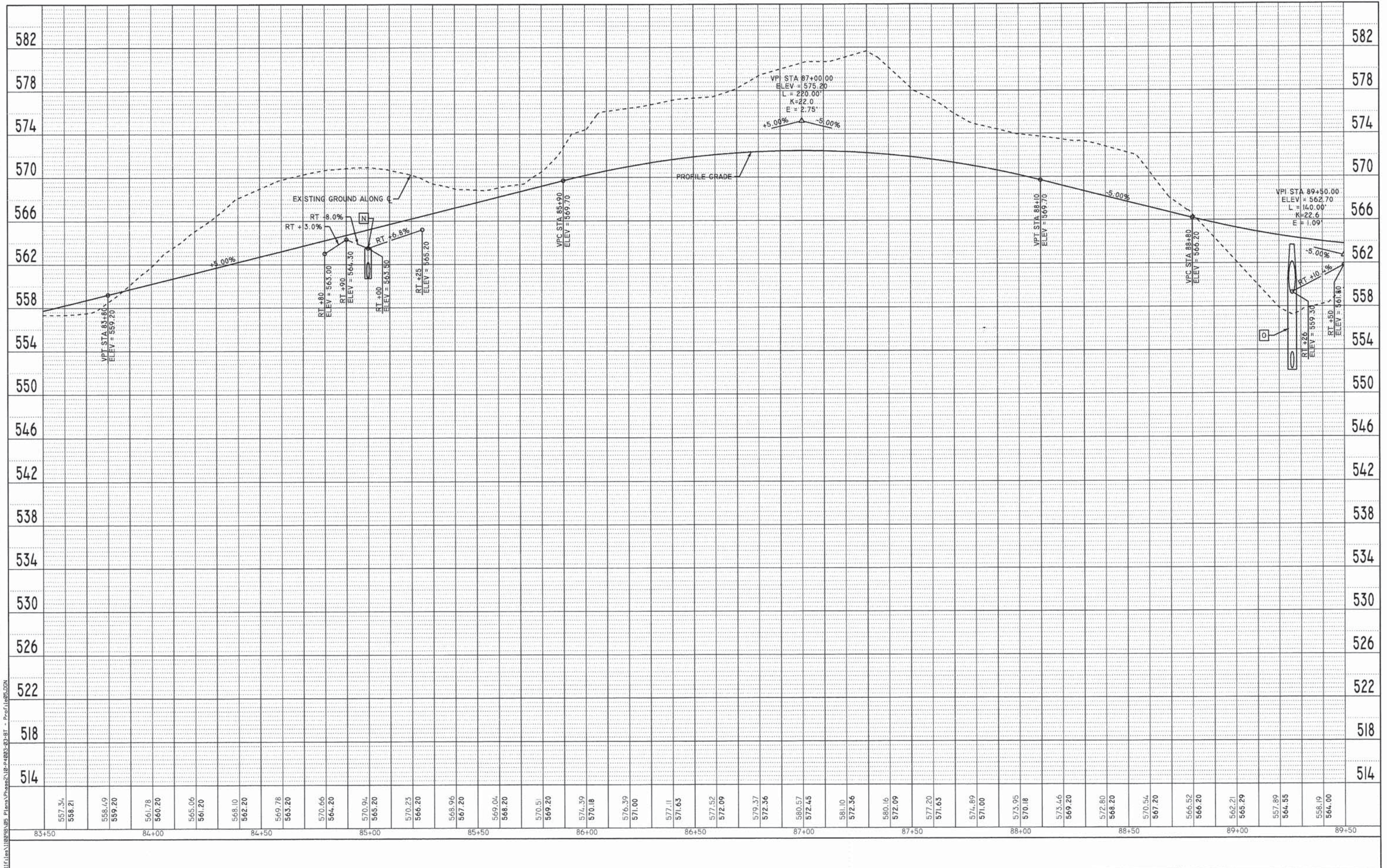
QUINCY PARK DISTRICT
BILL KLINGNER TRAIL - 5TH ST. TO 12TH ST.

SCALE:	SHEET NO. 9 OF 15 SHEETS	STA. _____ TO STA. _____
--------	--------------------------	--------------------------

SECTION	COUNTY	TOTAL SHEETS	SHEET NO.
10-P4003-03-BT	ADAMS	131	32
CONTRACT NO. 93630			
ILLINOIS FED. AID PROJECT			

PLAN	SUBMITTED	DATE
	PLOTTED	
	NOTED	
	CHECKED	
	FILE NAME	
	NO.	

PROFILE	SUBMITTED	DATE
	PLOTTED	
	NOTED	
	CHECKED	
	FILE NAME	
	NO.	



FILE NAME: D:\IFiles\118888\118888.dwg; P:\Plans\118888\118888.dwg; BT - Prof118888.dwg



USER NAME = bgj	DESIGNED -	REVISED -
PLOT SCALE = 40,0000' / in.	DRAWN -	REVISED -
PLOT DATE = 1/16/2015	CHECKED -	REVISED -
	DATE -	REVISED -

QUINCY PARK DISTRICT
BILL KLINGNER TRAIL - 5TH ST. TO 12TH ST.

PROFILE VIEW - STA 83+50 TO 89+50	
SCALE: 1"=20'	SHEET NO. 11 OF 15 SHEETS
STA. 83+50	TO STA. 89+50

SECTION	COUNTY	TOTAL SHEETS	SHEET NO.
10-P4003-03-BT	ADAMS	131	34
CONTRACT NO. 93630			
ILLINOIS FED. AID PROJECT			

P- STA 92+85.0
 PIPE CULVERTS, CLASS C, TYPE 2 42", 56"
 USFL = 558.20 (26.4' RT)
 DSFL = 556.85 (29.6' LT)
 END SECTIONS 42", 2 EACH
 DRAINAGE AREA = 10.9 ACRES
 Q30 = 77 CFS Q100 = 99 CFS
 TRENCH BACKFILL = 49.4 CY

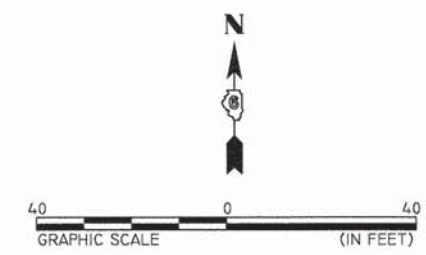
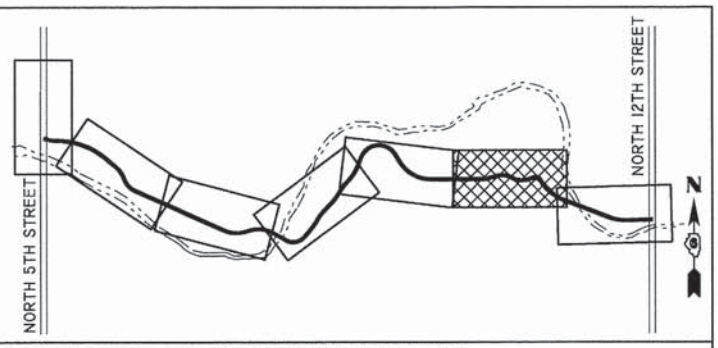
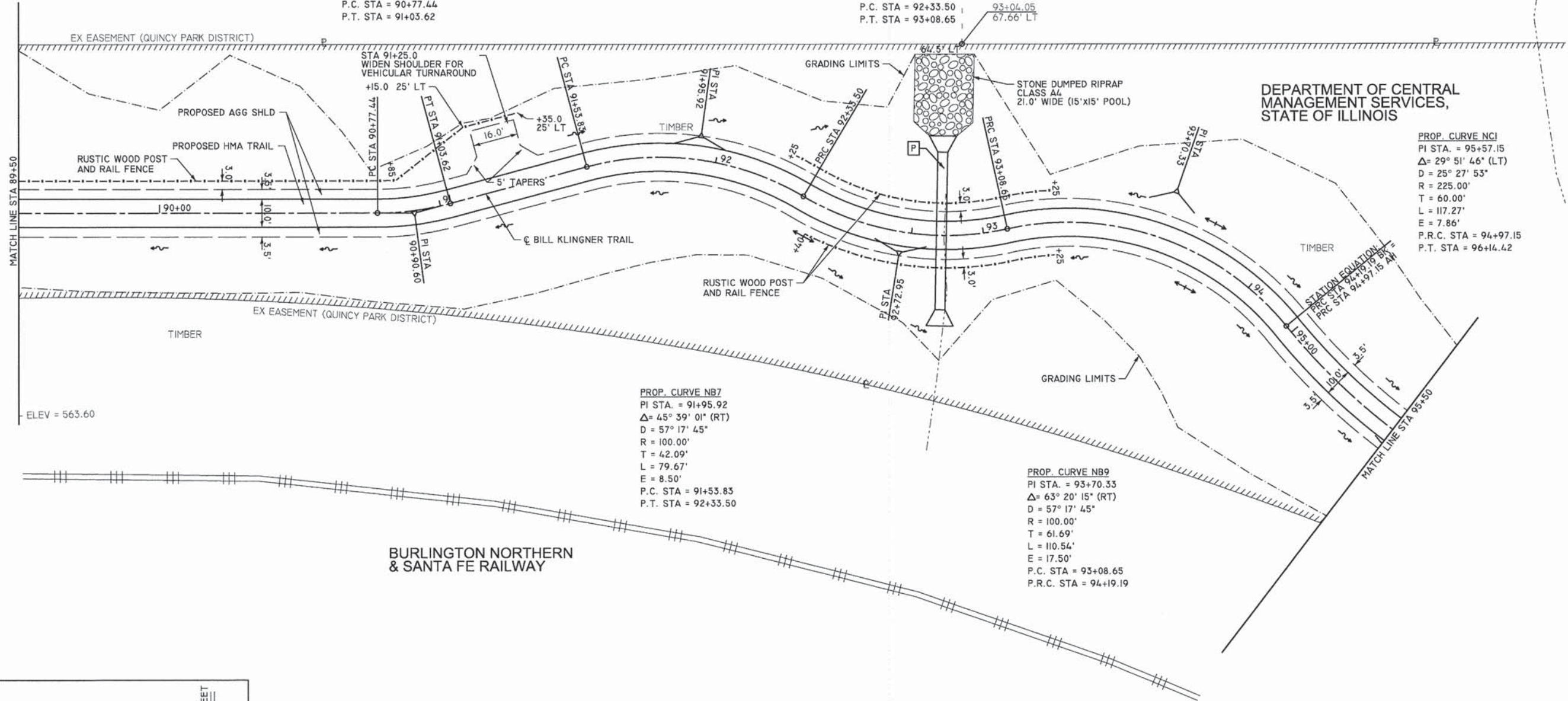
PROP. CURVE NB6
 PI STA. = 90+90.60
 $\Delta = 15^\circ 00' 00"$ (LT)
 D = 57° 17' 45"
 R = 100.00'
 T = 13.17'
 L = 26.18'
 E = 0.86'
 P.C. STA = 90+77.44
 P.T. STA = 91+03.62

PROP. CURVE NB8
 PI STA. = 92+72.95
 $\Delta = 43^\circ 03' 17"$ (LT)
 D = 57° 17' 45"
 R = 100.00'
 T = 39.45'
 L = 75.14'
 E = 7.50'
 P.C. STA = 92+33.50
 P.T. STA = 93+08.65

PROP. CURVE NCI
 PI STA. = 95+57.15
 $\Delta = 29^\circ 51' 46"$ (LT)
 D = 25° 27' 53"
 R = 225.00'
 T = 60.00'
 L = 117.27'
 E = 7.86'
 P.R.C. STA = 94+97.15
 P.T. STA = 96+14.42

PROP. CURVE NB7
 PI STA. = 91+95.92
 $\Delta = 45^\circ 39' 01"$ (RT)
 D = 57° 17' 45"
 R = 100.00'
 T = 42.09'
 L = 79.67'
 E = 8.50'
 P.C. STA = 91+53.83
 P.T. STA = 92+33.50

PROP. CURVE NB9
 PI STA. = 93+70.33
 $\Delta = 63^\circ 20' 15"$ (RT)
 D = 57° 17' 45"
 R = 100.00'
 T = 61.69'
 L = 110.54'
 E = 17.50'
 P.C. STA = 93+08.65
 P.R.C. STA = 94+19.19



KLINGNER & ASSOCIATES, P.C.
 Engineers • Architects • Surveyors

USER NAME = bgj	DESIGNED -	REVISED -
PLOT SCALE = 40.0000' / in.	DRAWN -	REVISED -
PLOT DATE = 1/16/2015	CHECKED -	REVISED -
	DATE -	REVISED -

QUINCY PARK DISTRICT
BILL KLINGNER TRAIL - 5TH ST. TO 12TH ST.

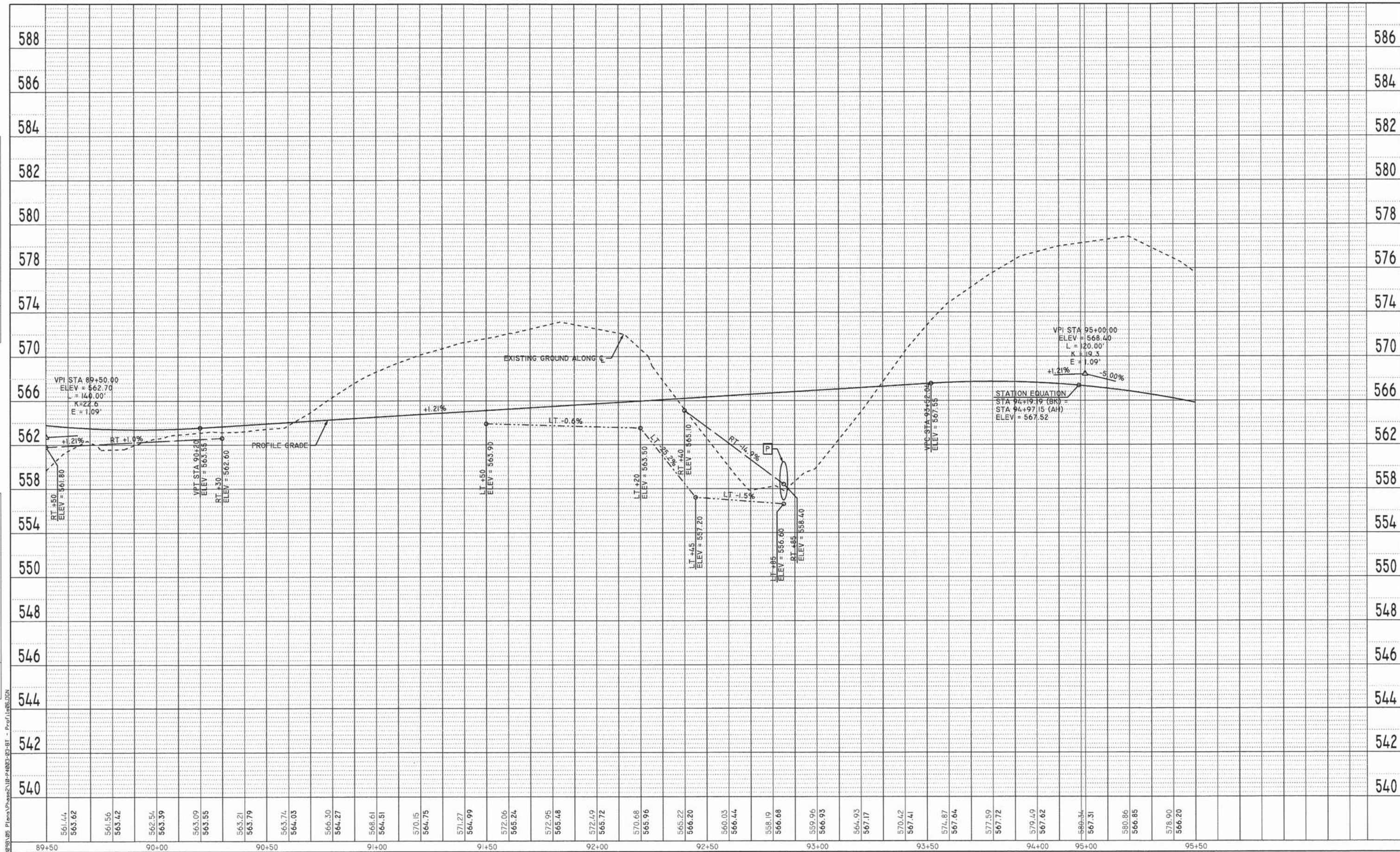
PLAN VIEW - STA 89+50 TO 95+50
 SCALE: 1"=20' SHEET NO. 12 OF 15 SHEETS STA. 89+50 TO STA. 95+50

SECTION	COUNTY	TOTAL SHEETS	SHEET NO.
10-P4003-03-BT	ADAMS	131	35
CONTRACT NO. 93630			
ILLINOIS FED. AID PROJECT			

FILE NAME: D:\11\1012898\05_Plan\Phase2\10-P4003-03-BT - Plan\05.dgn

DATE	
BY	
REVISIONS	
PLANNED	
ALIGNED	
CHECKED	
NO. OF SHEETS	
NO.	

DATE	
BY	
REVISIONS	
PLANNED	
ALIGNED	
CHECKED	
NO. OF SHEETS	
NO.	



FILE NAME: D:\11\res\1108\05_Plan\Phase2\10-P4003-03-BT - Profile.dwg

KLINGNER & ASSOCIATES, P.C.
 Engineers • Architects • Surveyors

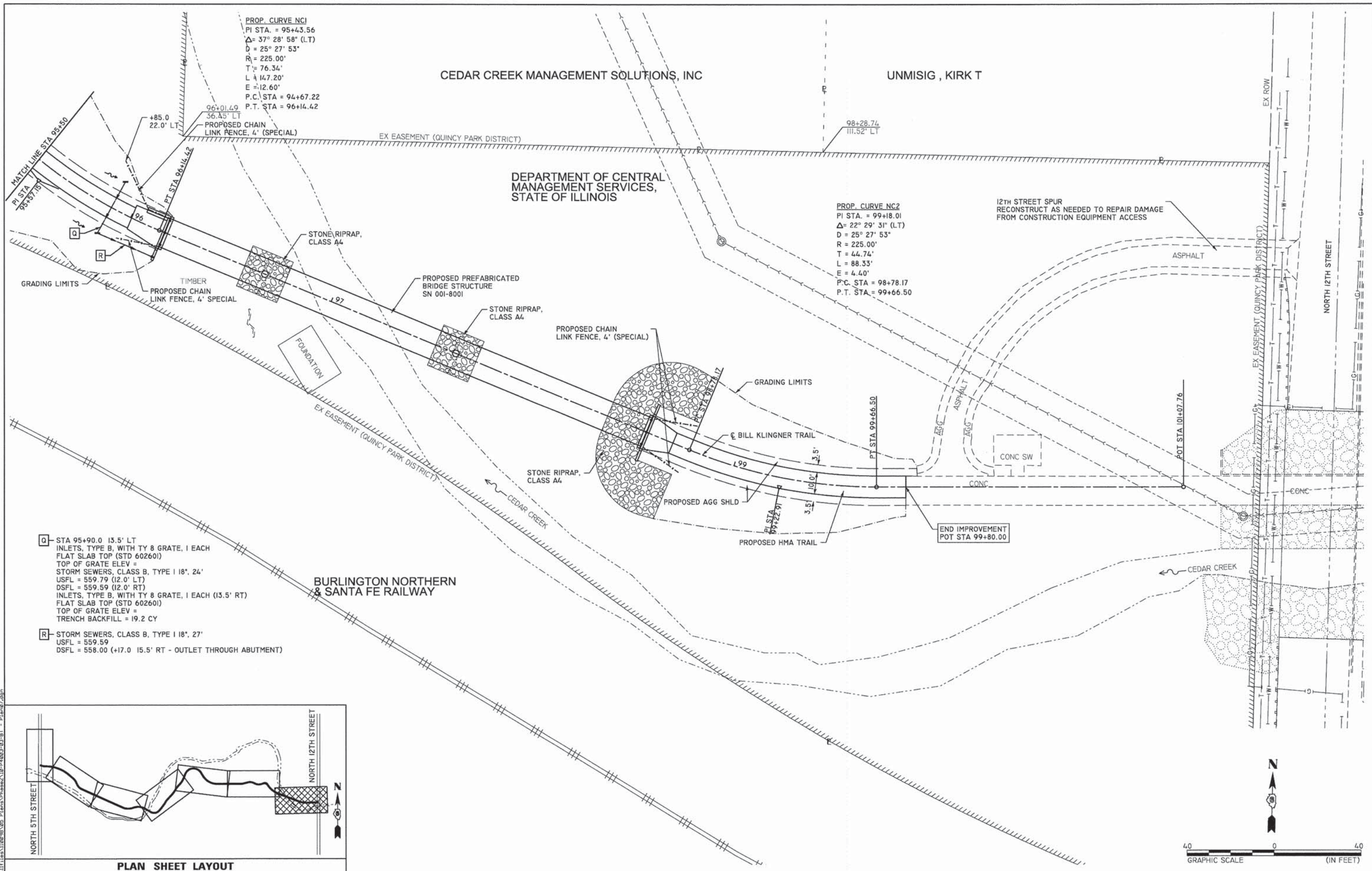
USER NAME = bgj	DESIGNED -	REVISED -
PLOT SCALE = 40.0000' / 1"	DRAWN -	REVISED -
PLOT DATE = 1/16/2015	CHECKED -	REVISED -
	DATE -	REVISED -

QUINCY PARK DISTRICT
BILL KLINGNER TRAIL - 5TH ST. TO 12TH ST.

PROFILE VIEW - STA 89+50 TO 95+50

SCALE: 1"=20' SHEET NO. 13 OF 15 SHEETS STA. 89+50 TO STA. 95+50

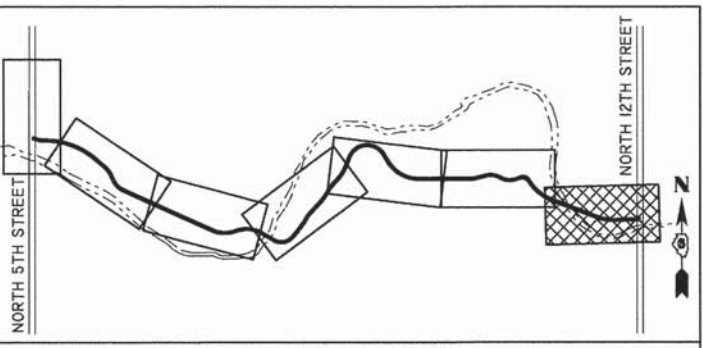
SECTION	COUNTY	TOTAL SHEETS	SHEET NO.
10-P4003-03-BT	ADAMS	131	36
CONTRACT NO. 93630			
ILLINOIS FED. AID PROJECT			



PROP. CURVE NC1
 PI STA. = 95+43.56
 $\Delta = 37^\circ 28' 58" (LT)$
 $D = 25^\circ 27' 53"$
 $R = 225.00'$
 $T = 76.34'$
 $L = 147.20'$
 $E = 12.60'$
 P.C. STA = 94+67.22
 P.T. STA = 96+14.42

PROP. CURVE NC2
 PI STA. = 99+18.01
 $\Delta = 22^\circ 29' 31" (LT)$
 $D = 25^\circ 27' 53"$
 $R = 225.00'$
 $T = 44.74'$
 $L = 88.33'$
 $E = 4.40'$
 P.C. STA = 98+78.17
 P.T. STA = 99+66.50

- Q - STA 95+90.0 13.5' LT INLETS, TYPE B, WITH TY 8 GRATE, 1 EACH FLAT SLAB TOP (STD 602601) TOP OF GRATE ELEV = STORM SEWERS, CLASS B, TYPE I 18", 24' USFL = 559.79 (12.0' LT) DSFL = 559.59 (12.0' RT) INLETS, TYPE B, WITH TY 8 GRATE, 1 EACH (13.5' RT) FLAT SLAB TOP (STD 602601) TOP OF GRATE ELEV = TRENCH BACKFILL = 19.2 CY
- R - STORM SEWERS, CLASS B, TYPE I 18", 27' USFL = 559.59 DSFL = 558.00 (+17.0 15.5' RT - OUTLET THROUGH ABUTMENT)



PLAN SHEET LAYOUT

FILE NAME: D:\NITR\10-1108-03-05_P1ema\Phase2\10-P4003-03-BT - P10n07.dgn

KLINGNER & ASSOCIATES, P.C.
 Engineers • Architects • Surveyors

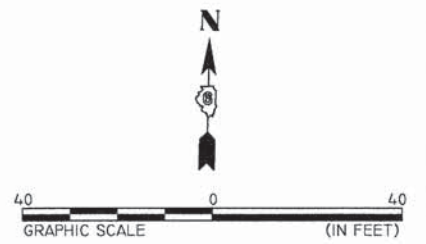
USER NAME = b9j	DESIGNED -	REVISED -
PLLOT SCALE = 40.0000' / 1"	DRAWN -	REVISED -
PLLOT DATE = 1/16/2015	CHECKED -	REVISED -
	DATE -	REVISED -

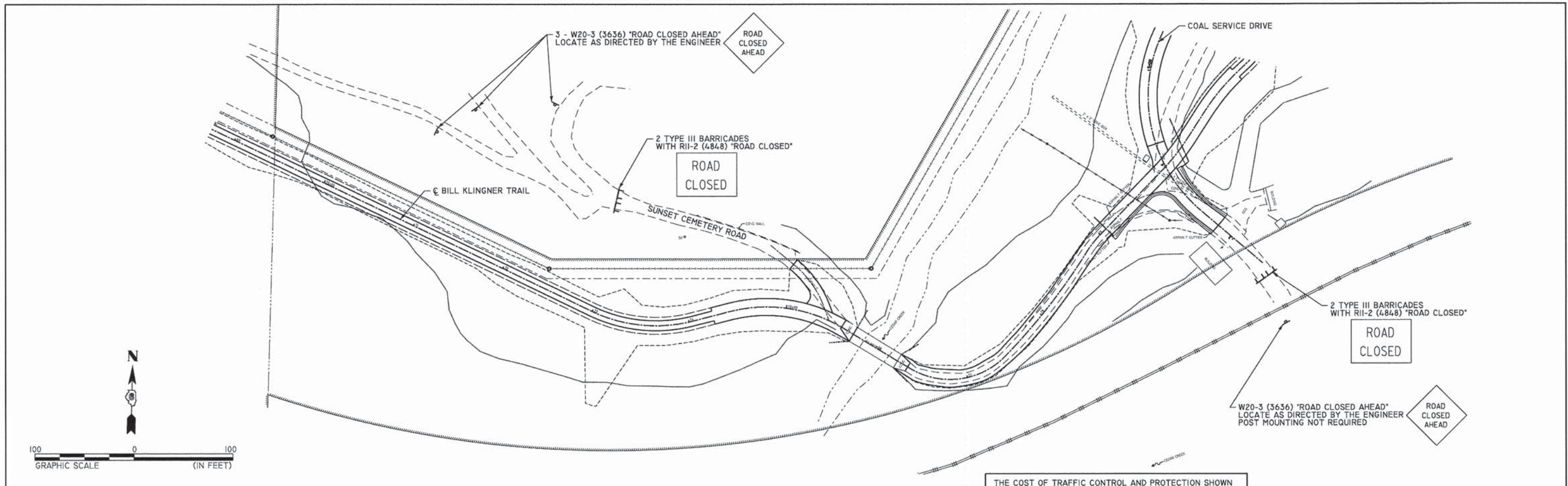
QUINCY PARK DISTRICT
BILL KLINGNER TRAIL - 5TH ST. TO 12TH ST.

PLAN VIEW - STA 95+50 TO 101+50

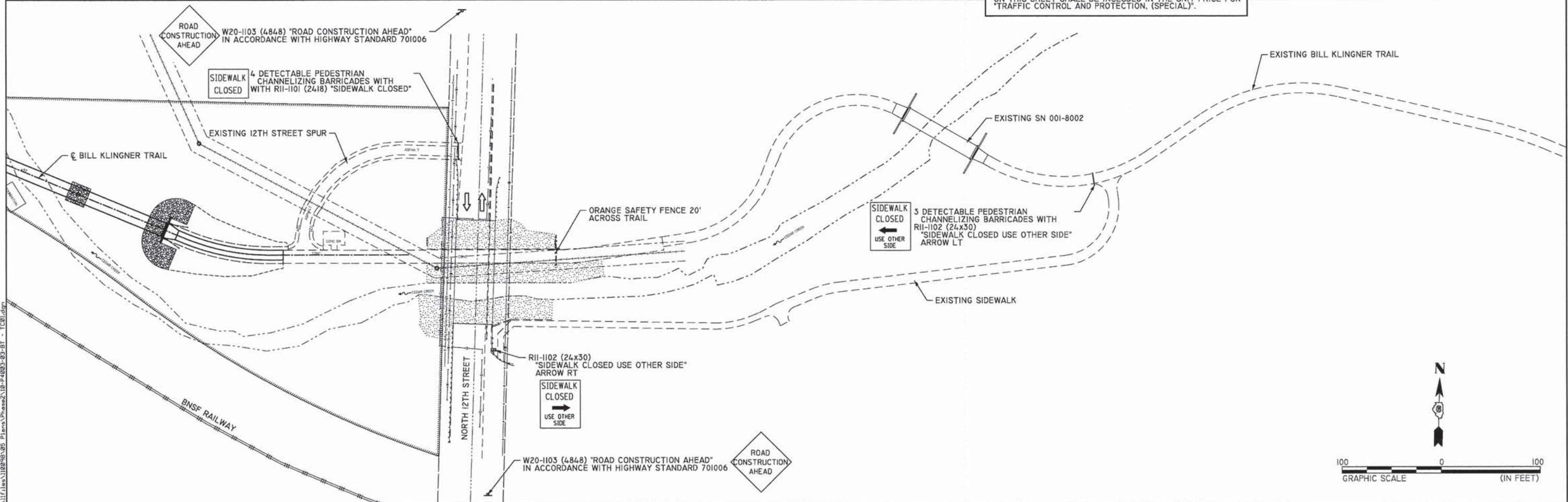
SCALE: 1"=20' SHEET NO. 14 OF 15 SHEETS STA. 95+50 TO STA. 101+50

SECTION	COUNTY	TOTAL SHEETS	SHEET NO.
10-P4003-03-BT	ADAMS	131	37
CONTRACT NO. 93630			
ILLINOIS FED. AID PROJECT			





THE COST OF TRAFFIC CONTROL AND PROTECTION SHOWN ON THIS SHEET SHALL BE INCLUDED IN THE UNIT PRICE FOR "TRAFFIC CONTROL AND PROTECTION, (SPECIAL)".



KLINGNER & ASSOCIATES, P.C.
Engineers • Architects • Surveyors

USER NAME = seb	DESIGNED -	REVISED -
PLOT SCALE = 100.0000' / 1" =	DRAWN -	REVISED -
PLOT DATE = 1/19/2015	CHECKED -	REVISED -
	DATE -	REVISED -

QUINCY PARK DISTRICT
BILL KLINGNER TRAIL - 5TH ST. TO 12TH ST.

TRAFFIC CONTROL AND PROTECTION
TRAIL & ROADWAY CLOSURES

SCALE: 1"=50' SHEET NO. 1 OF 1 SHEETS STA. TO STA.

SECTION	COUNTY	TOTAL SHEETS	SHEET NO.
10-P4003-03-BT	ADAMS	131	39
CONTRACT NO. 93630			
ILLINOIS FED. AID PROJECT			

FILE NAME: Q:\11\110898\03_Plan\Phase2\10-P4003-03-BT - TCB.dgn

NORTH 5TH STREET		ELEVATION	
A1	49+88.53	24.58' LT	539.64
A2	49+98.88	24.58' LT	539.49
A3	50+05.00	24.58' LT	538.42
A4	50+10.00	24.58' LT	539.38
A5	50+15.00	24.58' LT	539.37
A6	50+20.00	24.58' LT	538.38
A7	50+25.00	24.58' LT	539.42
A8	50+30.00	24.58' LT	539.48
A9	50+35.00	24.58' LT	539.56
A10	50+40.00	24.58' LT	539.63
A11	50+44.08	24.58' LT	539.70
A12	50+45.00	24.58' LT	539.71
A13	50+50.00	24.58' LT	539.78
A14	50+55.00	24.58' LT	539.86
A15	50+60.00	24.58' LT	539.93
A16	50+62.08	24.58' LT	539.96
A17	50+67.86	24.58' LT	540.05
A18	50+70.74	29.58' LT	540.15
A19	50+75.88	38.49' LT	540.22
A20	50+67.22	43.49' LT	540.28
A21	50+44.08	53.46' LT	540.13
A22	50+44.08	34.58' LT	539.85
A23	49+91.21	34.58' LT	539.71

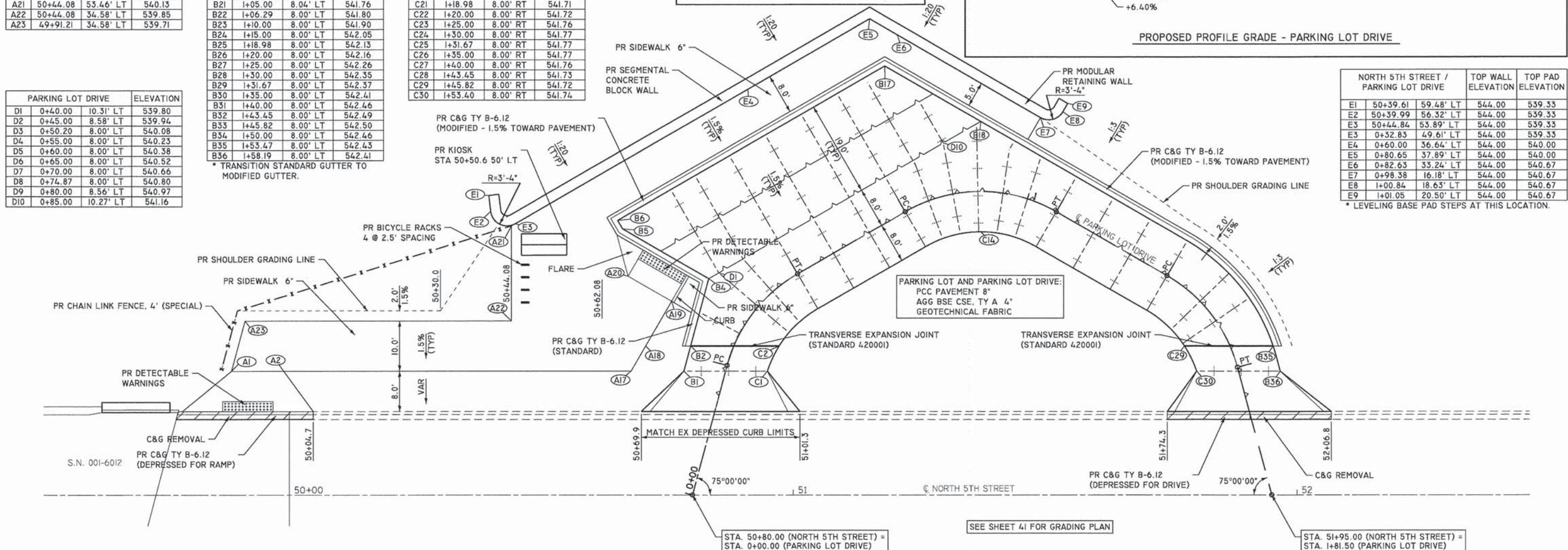
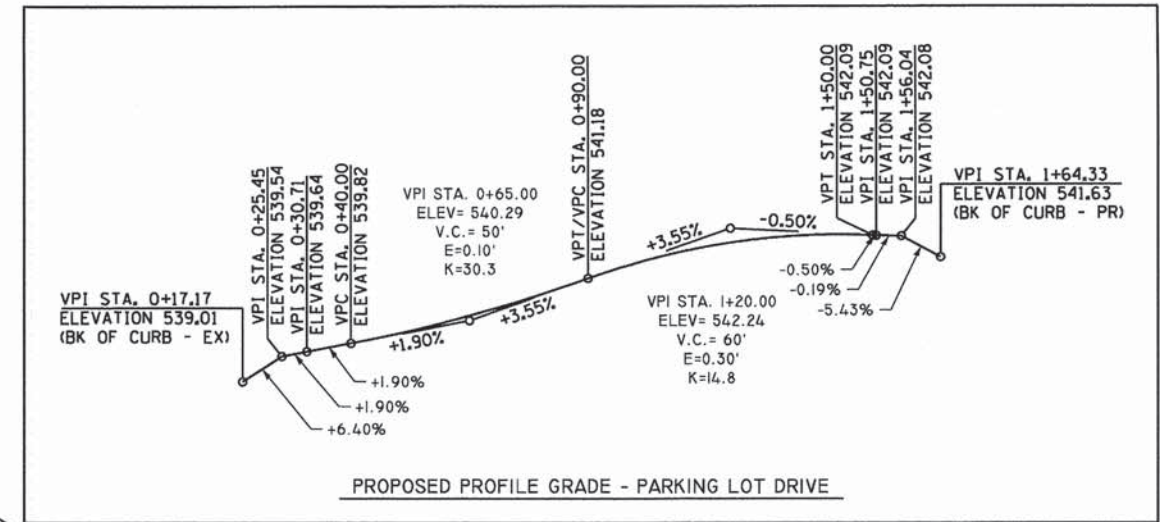
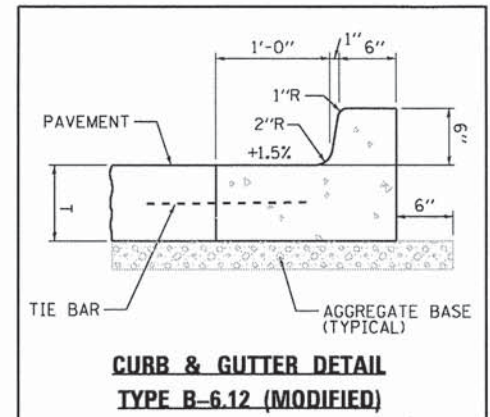
PARKING LOT DRIVE		ELEVATION	
B1	0+23.31	8.00' LT	539.44
B2	0+28.09	8.05' LT	539.54
B3	0+33.46	9.00' LT	539.62
B4	0+38.41	11.13' LT	539.75
B5	0+37.14	30.71' LT	539.86
B6	0+37.55	32.53' LT	539.87
B7	0+42.12	29.19' LT	540.04
B8	0+43.26	28.61' LT	540.09
B9	0+46.72	27.44' LT	540.22
B10	0+50.20	27.05' LT	540.37
B11	0+55.00	27.05' LT	540.52
B12	0+60.00	27.05' LT	540.67
B13	0+65.00	27.05' LT	540.81
B14	0+70.00	27.05' LT	540.95
B15	0+74.87	27.05' LT	541.09
B16	0+78.31	27.43' LT	541.26
B17	0+80.55	28.09' LT	541.38
B18	0+90.58	13.87' LT	541.41
B19	0+95.00	10.86' LT	541.51
B20	1+00.00	8.85' LT	541.63
B21	1+05.00	8.04' LT	541.76
B22	1+06.29	8.00' LT	541.80
B23	1+10.00	8.00' LT	541.90
B24	1+15.00	8.00' LT	542.05
B25	1+18.98	8.00' LT	542.13
B26	1+20.00	8.00' LT	542.16
B27	1+25.00	8.00' LT	542.26
B28	1+30.00	8.00' LT	542.35
B29	1+31.67	8.00' LT	542.37
B30	1+35.00	8.00' LT	542.41
B31	1+40.00	8.00' LT	542.46
B32	1+43.45	8.00' LT	542.49
B33	1+45.82	8.00' LT	542.50
B34	1+50.00	8.00' LT	542.46
B35	1+53.47	8.00' LT	542.43
B36	1+58.19	8.00' LT	542.41

PARKING LOT DRIVE		ELEVATION	
C1	0+27.95	8.00' RT	539.66
C2	0+35.48	8.00' RT	539.78
C3	0+38.41	8.00' RT	539.82
C4	0+40.00	8.00' RT	539.84
C5	0+45.00	8.00' RT	539.90
C6	0+50.20	8.00' RT	539.98
C7	0+55.00	8.00' RT	540.05
C8	0+60.00	8.00' RT	540.14
C9	0+65.00	8.00' RT	540.28
C10	0+70.00	8.00' RT	540.42
C11	0+74.87	8.00' RT	540.56
C12	0+80.00	8.00' RT	540.72
C13	0+85.00	8.00' RT	540.89
C14	0+90.58	8.00' RT	541.08
C15	0+95.00	8.00' RT	541.23
C16	1+00.00	8.00' RT	541.38
C17	1+05.00	8.00' RT	541.52
C18	1+06.29	8.00' RT	541.54
C19	1+10.00	8.00' RT	541.60
C20	1+15.00	8.00' RT	541.67
C21	1+18.98	8.00' RT	541.71
C22	1+20.00	8.00' RT	541.72
C23	1+25.00	8.00' RT	541.76
C24	1+30.00	8.00' RT	541.77
C25	1+31.67	8.00' RT	541.77
C26	1+35.00	8.00' RT	541.77
C27	1+40.00	8.00' RT	541.76
C28	1+43.45	8.00' RT	541.73
C29	1+45.82	8.00' RT	541.72
C30	1+53.40	8.00' RT	541.74

PARKING LOT DRIVE		ELEVATION	
D1	0+40.00	10.31' LT	539.80
D2	0+45.00	8.58' LT	539.94
D3	0+50.20	8.00' LT	540.08
D4	0+55.00	8.00' LT	540.23
D5	0+60.00	8.00' LT	540.38
D6	0+65.00	8.00' LT	540.52
D7	0+70.00	8.00' LT	540.66
D8	0+74.87	8.00' LT	540.80
D9	0+80.00	8.56' LT	540.97
D10	0+85.00	10.27' LT	541.16

PARKING LOT DRIVE		ELEVATION	
E1	50+39.61	59.48' LT	544.00
E2	50+39.99	56.32' LT	544.00
E3	50+44.84	53.89' LT	544.00
E4	0+32.83	49.61' LT	544.00
E5	0+80.65	37.89' LT	544.00
E6	0+82.63	33.24' LT	544.00
E7	0+98.38	16.18' LT	544.00
E8	1+00.84	18.63' LT	544.00
E9	1+01.05	20.50' LT	544.00

NORTH 5TH STREET / PARKING LOT DRIVE		TOP WALL ELEVATION		TOP PAD ELEVATION	
E1	50+39.61	59.48' LT	544.00	539.33	
E2	50+39.99	56.32' LT	544.00	539.33	
E3	50+44.84	53.89' LT	544.00	539.33	
E4	0+32.83	49.61' LT	544.00	539.33	
E5	0+80.65	37.89' LT	544.00	540.00	
E6	0+82.63	33.24' LT	544.00	540.00	
E7	0+98.38	16.18' LT	544.00	540.67	
E8	1+00.84	18.63' LT	544.00	540.67	
E9	1+01.05	20.50' LT	544.00	540.67	

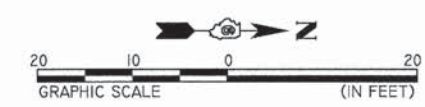


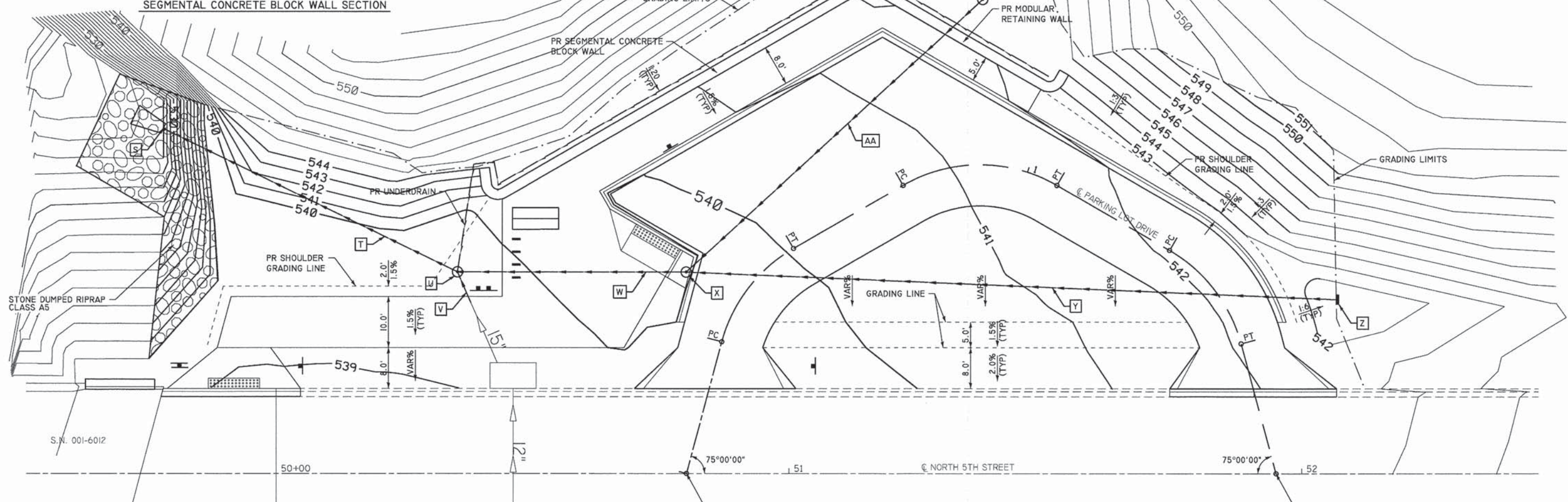
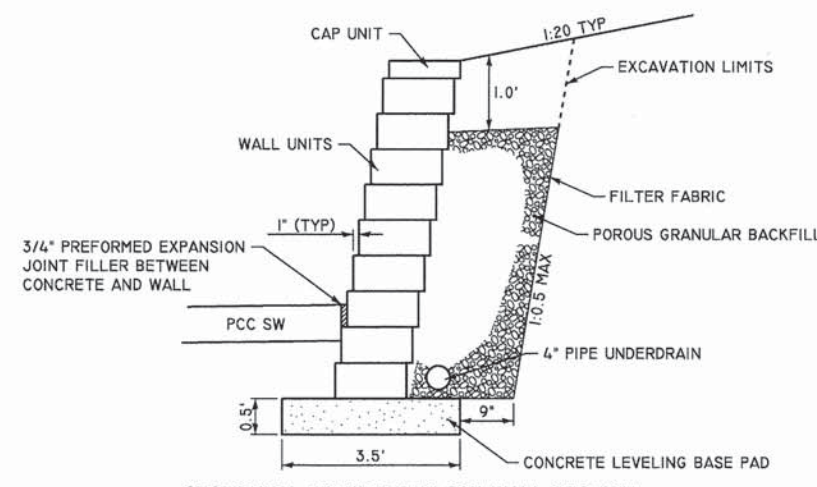
PAVEMENT JOINT LEGEND

- LONGITUDINAL CONSTRUCTION OR SAWED JOINT (STD 420001)
- TRANSVERSE CONTRACTION JOINT (STD BLR 10-6)

- NOTES:**
- COST OF TRANSVERSE EXPANSION JOINT INCLUDED WITH THE COST OF THE PCC PAVEMENT.
 - SAW CUTS TO EXTEND THROUGH CURB AND GUTTER.
 - JOINTS ARE FOR INFORMATION ONLY. CONTRACTOR TO PROVIDE A LAYOUT TO THE FIELD ENGINEER FOR APPROVAL PRIOR TO CONSTRUCTION.

- PROP. CURVE PARK_1**
 PI STA. = 0+39.06 (STA. 50+90.11, 37.73' LT)
 $\Delta = 45^\circ 00' 00''$ (RT)
 $D = 190^\circ 59' 09''$
 R = 30.00'
 T = 12.43'
 L = 23.56'
 E = 2.47'
 P.C. STA. = 0+26.63 (STA. 50+86.89, 25.73' LT)
 P.T. STA. = 0+50.20 (STA. 51+00.87, 43.94' LT)
- PROP. CURVE PARK_2**
 PI STA. = 0+92.19 (STA. 51+37.24, 64.94' LT)
 $\Delta = 60^\circ 00' 00''$ (RT)
 $D = 190^\circ 59' 09''$
 R = 30.00'
 T = 17.32'
 L = 31.42'
 E = 4.64'
 P.C. STA. = 0+74.87 (STA. 51+22.24, 56.28' LT)
 P.T. STA. = 1+06.29 (STA. 51+52.24, 56.28' LT)
- PROP. CURVE PARK_3**
 PI STA. = 1+44.10 (STA. 51+84.99, 37.37' LT)
 $\Delta = 45^\circ 00' 00''$ (RT)
 $D = 190^\circ 59' 09''$
 R = 30.00'
 T = 12.43'
 L = 23.56'
 E = 2.47'
 P.C. STA. = 1+31.67 (STA. 51+74.22, 43.59' LT)
 P.T. STA. = 1+55.23 (STA. 51+88.20, 25.37' LT)



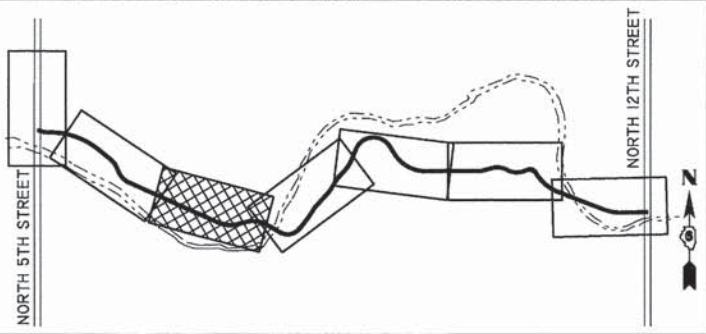


- [S] STA 49+78.0 67.3' LT
END SECTIONS 24", 1 EACH
- [T] STORM SEWERS, CLASS B, TYPE 2 24", 62'
USFL = 528.00
DSFL = 526.80
- [U] STA 50+35.4 39.3' LT
MH, TY A, 5'-DIAMETER, TY 1 FR, CLSD LID, FST, 1 EACH
TOP OF LID ELEV = 539.80
FL ELEV = 527.50
CONNECT UNDERDRAIN INTO MH
- [V] REMOVE END SECTION, 1 EACH
CONCRETE COLLAR (SEE DETAIL)
STORM SEWERS, CLASS B, TYPE 2 15", 6'
USFL = 532.10 (MATCH EX)
DSFL = 532.00
TRENCH BACKFILL = 4.3 CY
- [W] STORM SEWERS, CLASS B, TYPE 2 18", 40'
USFL = 532.50
DSFL = 531.50
TRENCH BACKFILL = 43.6 CY
- [X] STA 50+80.6 39.2' LT (BACK OF CURB)
MANHOLES, 6' DIA., TY 15 FR & LID, FST, 1 EACH
TOP OF CURB ELEV = 540.10
FL ELEV = 532.00
- [Y] STORM SEWERS, CLASS B, TYPE 2 18", 124'
USFL = 537.50
DSFL = 535.00
TRENCH BACKFILL = 31.4 CY
- [Z] STA 52+07.0 34.0' LT
INLETS, TYPE B, TYPE 8 GRATE, FST, 1 EACH
TOP OF GRATE ELEV = 540.85
FL ELEV = 537.00
- [AA] STORM SEWERS, CLASS B, TYPE 2 12", 76'
USFL = 537.50
DSFL = 536.50
TRENCH BACKFILL = 51.5 CY
- [BB] STA 51+37.8 92.5' LT
MANHOLES, 4' DIA., TY 1 FR, CLSD LID, FST, 1 EACH
TOP OF LID ELEV = 544.50
FL ELEV = 537.00
- [CC] CONCRETE COLLAR (SEE DETAIL)
STORM SEWERS, CLASS B, TYPE 1 12", 12"
USFL = 542.34 (MATCH EX)
DSFL = 541.00

PROP. CURVE PARK 1	PROP. CURVE PARK 2	PROP. CURVE PARK 3
PI STA. = 0+39.06 (STA. 50+90.11, 37.73' LT)	PI STA. = 0+92.19 (STA. 51+37.24, 64.94' LT)	PI STA. = 1+44.10 (STA. 51+84.99, 37.37' LT)
Δ = 45° 00' 00" (RT)	Δ = 60° 00' 00" (RT)	Δ = 45° 00' 00" (RT)
D = 190° 59' 09"	D = 190° 59' 09"	D = 190° 59' 09"
R = 30.00'	R = 30.00'	R = 30.00'
T = 12.43'	T = 17.32'	T = 12.43'
L = 23.56'	L = 31.42'	L = 23.56'
E = 2.47'	E = 4.64'	E = 2.47'
P.C. STA. = 0+26.63 (STA. 50+86.89, 25.73' LT)	P.C. STA. = 0+74.87 (STA. 51+22.24, 56.28' LT)	P.C. STA. = 1+31.67 (STA. 51+74.22, 43.59' LT)
P.T. STA. = 0+50.20 (STA. 51+00.87, 43.94' LT)	P.T. STA. = 1+06.29 (STA. 51+52.24, 56.28' LT)	P.T. STA. = 1+55.23 (STA. 51+88.20, 25.37' LT)



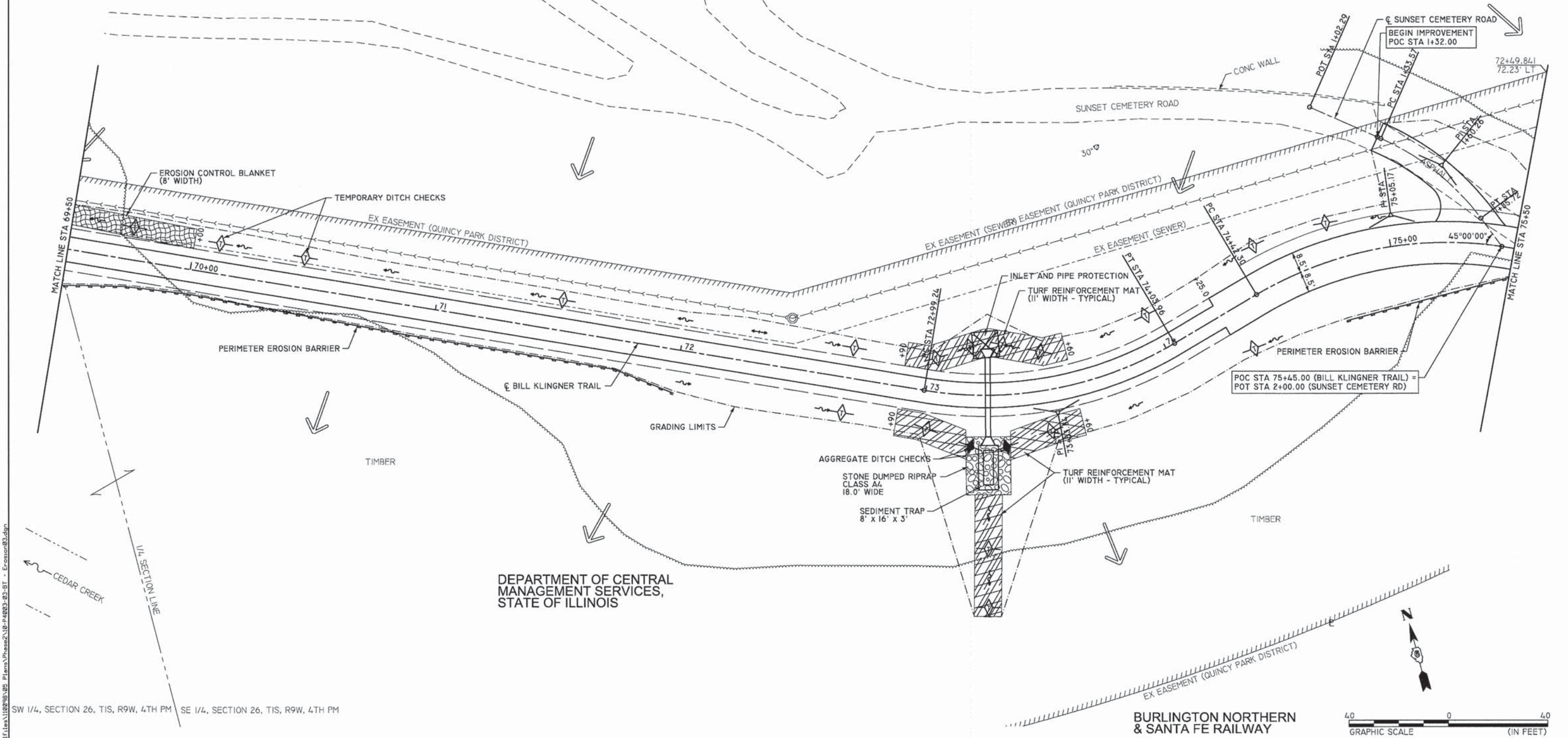
FILE NAME: D:\IT\100895_05_Plan\Phase2\10-P4003-03-BT - Parking Lot Grading Plan.dgn



PLAN SHEET LAYOUT

DEPARTMENT OF CENTRAL
MANAGEMENT SERVICES,
STATE OF ILLINOIS

DEPARTMENT OF CENTRAL
MANAGEMENT SERVICES,
STATE OF ILLINOIS



FILE NAME: D:\IT\1\100000\05_Plan\Plan\10-P4003-03-BT - Erosion03.dgn

KLINGNER & ASSOCIATES, P.C.
Engineers • Architects • Surveyors

USER NAME = bgj
PLOT SCALE = 48.0000" / in.
PLOT DATE = 1/16/2015

DESIGNED -
DRAWN -
CHECKED -
DATE -

REVISED -
REVISED -
REVISED -
REVISED -

**QUINCY PARK DISTRICT
BILL KLINGNER TRAIL - 5TH ST. TO 12TH ST.**

**STORMWATER POLLUTION PREVENTION PLAN
STA 69+50 TO STA. 75+50**

SCALE: 1"=20' SHEET NO. 3 OF 7 SHEETS STA. 69+50 TO STA. 75+50

SECTION	COUNTY	TOTAL SHEETS	SHEET NO.
10-P4003-03-BT	ADAMS	131	45
CONTRACT NO. 93630			
ILLINOIS FED. AID PROJECT			



