

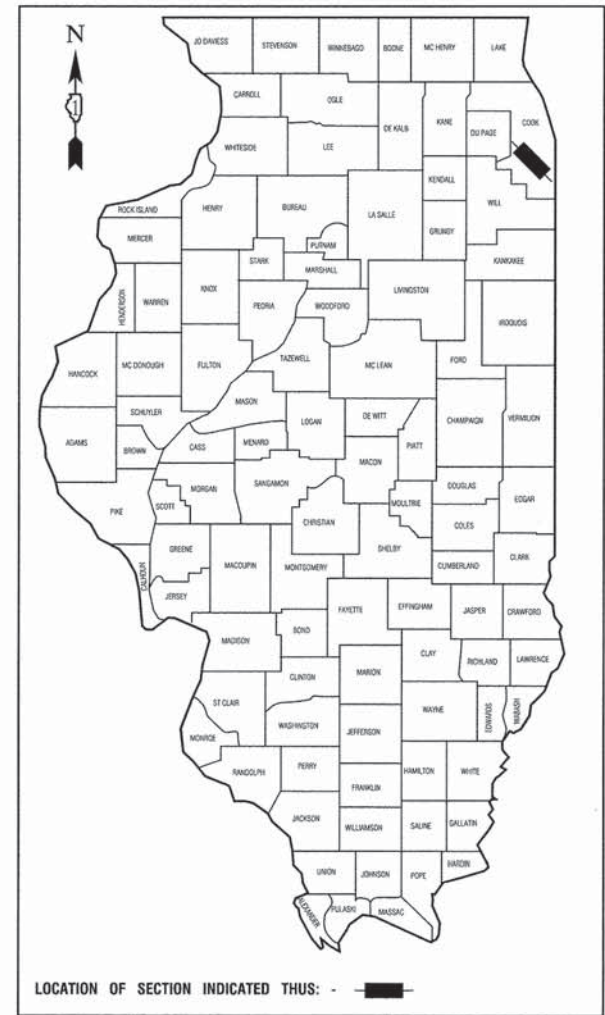
STATE OF ILLINOIS DEPARTMENT OF TRANSPORTATION DIVISION OF HIGHWAYS

PLANS FOR PROPOSED FEDERAL AID HIGHWAY

**PENNSY GREENWAY SPUR BIKE PATH
ILL./IND. STATE LINE TO LITTLE CALUMET RIVER
PROJECT NO.: TE-00D1(783)
SECTION NO.: 06-P4045-02-SP
LAN-OAK PARK DISTRICT
COOK COUNTY
JOB NO.: C-91-020-08**

F. A. AID	SECTION	COUNTY	TOTAL SHEETS	SHEET NO.
	06-P4045-02-SP	COOK	12	1
STA.		TO STA.		
FED. ROAD DIST. NO. 1	ILLINOIS	FED. AID PROJECT TE-00D1(783)		

CONTRACT #61B32



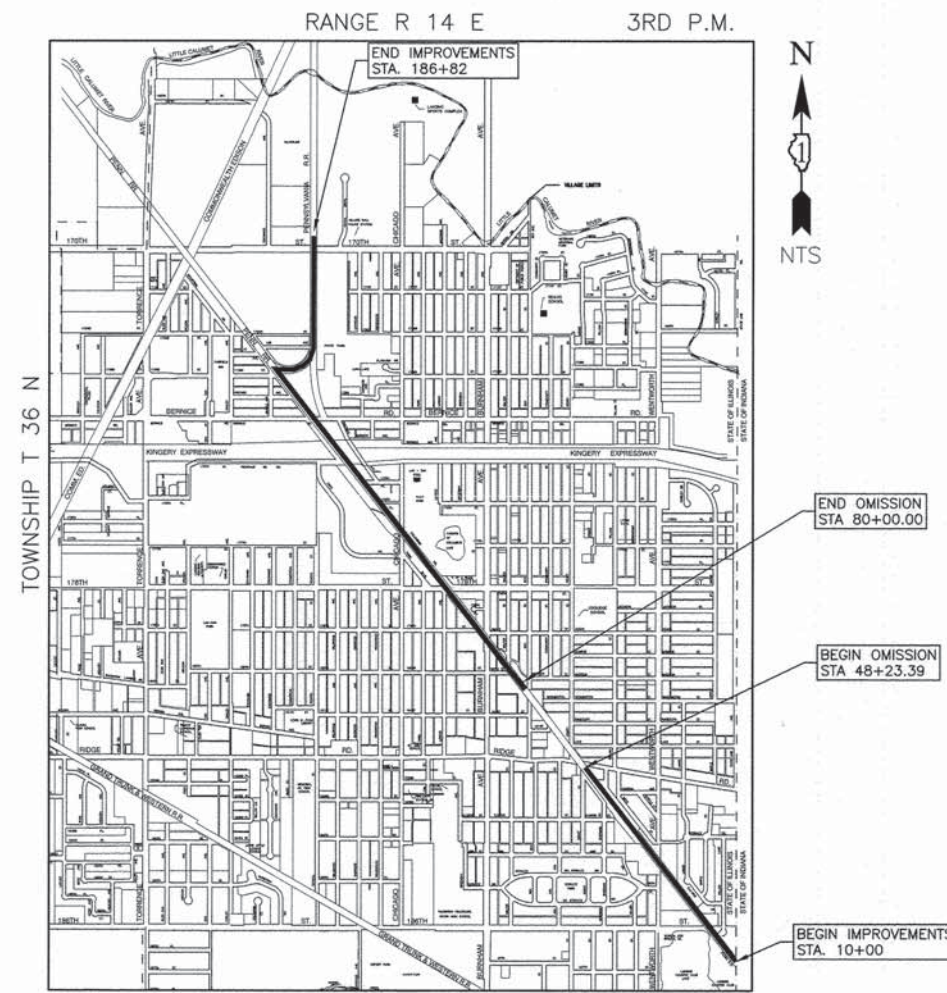
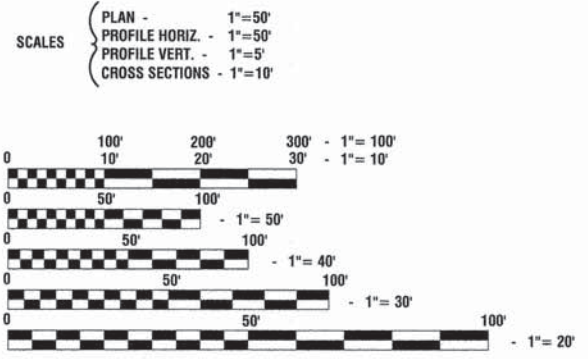
INDEX OF SHEETS

1. COVER SHEET, INDEX OF SHEETS & STATE STANDARDS
2. SUMMARY OF QUANTITIES & GENERAL NOTES
3. PLANTING TABLES
4. PLANTING GENERAL DETAILS
- 5-9. IMPROVEMENT PLANS
- 10-11. TRAIL SIGNAGE
12. ENTRANCE SIGN DETAIL

HIGHWAY STANDARDS

- | | |
|-----------|---|
| 000001-06 | STANDARD SYMBOLS ABBREVIATIONS & PATTERNS |
| 701801-05 | SIDEWALK CORNER OR CROSSWALK CLOSURE |
| 701901-04 | TRAFFIC CONTROL DEVICES |
| 720001-01 | SIGN PANEL MOUNT DETAILS |

THIS PROJECT IS LOCATED IN THE VILLAGE OF LANSING



THORNTON TOWNSHIP **LOCATION MAP**

GROSS LENGTH=17,682 FEET=3.35 MILES
NET LENGTH=14,505 FEET=2.75 MILES

STATE OF ILLINOIS DEPARTMENT OF TRANSPORTATION
DIVISION OF HIGHWAYS

Approved: [Signature] 1/29/15
Local Public Agency, Lan-Oak Park District

Passed: FEBRUARY 18, 2015
[Signature] CHRISTOPHER HOYT
District 1 Engineer of Local Roads & Streets

Released for Bid Based on Limited Review: February 18, 2015
[Signature]
Deputy Director of Highways, Region 1 Engineer

PRINTED BY THE AUTHORITY OF
THE STATE OF ILLINOIS

FULL SIZE PLANS HAVE BEEN PREPARED USING STANDARD ENGINEERING SCALES, REDUCED SIZED PLANS WILL NOT CONFORM TO STANDARD SCALES, IN MAKING MEASUREMENTS ON REDUCED PLANS, THE ABOVE SCALES MAY BE USED.

J. U. L. I. E.
JOINT UTILITY LOCATION INFORMATION FOR EXCAVATION
1-800-892-0123 or 811

CONTRACT NO. 61B32

PREPARED BY OR UNDER THE DIRECT SUPERVISION OF:
[Signature] 1/30/15

FEDERAL AID PROGRAM ENGINEER: FAWAD AQUEEL, P.E. 847-705-4021, SCHAMBURG, IL
CONSULTANTS: ROBINSON ENGINEERING, LTD. 708-331-6700

SUMMARY OF QUANTITIES					TOTAL	CONSTRUCTION
S.I.	CODE NO.	ITEM	UNIT	QUANTITY	TYPE	CODE
					0031	
	20101700	SUPPLEMENTAL WATERING	UNIT	9		9
	25000200	SEEDING, CLASS 2	ACRE	0.2		0.2
	25100630	EROSION CONTROL BLANKET	SQ YD	435		435
	28200200	FILTER FABRIC	SQ YD	384		384
	67100100	MOBILIZATION	L SUM	1		1
	70102640	TRAFFIC CONTROL AND PROTECTION, STANDARD 701801	L SUM	1		1
*	72000100	SIGN PANEL - TYPE 1	SQ FT	23		23
	A2000119	TREE, ACER X FREEMANII AUTUMN BLAZE (AUTUMN BLAZE FREEMAN MAPLE), 3-1/2" CALIPER, BALLED AND BURLAPPED	EACH	2		2
	A2006618	TREE, QUERCUS IMBRICARIA (SHINGLE OAK), 2-1/2" CALIPER, BALLED AND BURLAPPED	EACH	1		1
	A2008080	TREE, TILIA CORDATA GLENLIVEN (GLENLIVEN GREENSPIRE LINDEN), 2" CALIPER, BALLED AND BURLAPPED	EACH	3		3
	B2005524	TREE, PYRUS CALLERYANA ARISTOCRAT (ARISTOCRAT CALLERY PEAR), 3" CALIPER, TREE FORM, BALLED AND BURLAPPED	EACH	7		7
	B2006268	TREE, SYRINGA RETICULATA (JAPANESE TREE LILAC), 7' HEIGHT, CLUMP FORM, BALLED AND BURLAPPED	EACH	5		5
	B2010020	TREE, AMELANCHIER GRANDIFLORA PRINCESS DIANA (PRINCESS DIANA APPLE SERVICEBERRY), 8' HEIGHT, BALLED AND BURLAPPED	EACH	3		3
	D2003848	EVERGREEN, THUJA OCCIDENTALIS TECHNY (TECHNY ARBORVITAE), 4' HEIGHT, BALLED AND BURLAPPED	EACH	45		45
	K0012990	PERENNIAL PLANTS, ORNAMENTAL TYPE, GALLON POT	UNIT	19		19
	K0026850	PERENNIAL PLANT CARE	SQ YD	1780		1780
	K1005481	SHREDDED BARK MULCH 3"	SQ YD	890		890
	X0323045	STONE OUTCROPPING	SQ FT	630		630
*	X0324062	ENTRANCE SIGN	L SUM	1		1
	X0326441	STONE BEDDING MATERIAL	TON	53		53
*	X0327018	DECORATIVE SIGN POST	EACH	36		36
	X2110100	TOPSOIL FURNISH AND PLACE, SPECIAL	CU YD	371		371
*	X7200105	SIGN PANEL - TYPE 1 (SPECIAL)	SQ FT	176		176
*	X7200205	SIGN PANEL - TYPE 2 (SPECIAL)	SQ FT	29		29
	Z0069200	STONE RETAINING WALL	SQ FT	610		610

* - INDICATES SPECIALTY ITEMS

GENERAL NOTES

- BOTH ROBINSON ENGINEERING, LTD. (708-331-6700) AND THE LAN-OAK PARK DISTRICT (708-474-5020) SHALL BE NOTIFIED TWO (2) WORKING DAYS BEFORE CONSTRUCTION BEGINS.
- WHEN IN THE CONSTRUCTION OPERATION, ANY LOOSE MATERIAL IS DEPOSITED IN THE FLOW LINE OF DITCHES, GUTTERS OR OTHER DRAINAGE STRUCTURES SO THAT THE NATURAL FLOW OF WATER IS OBSTRUCTED, IT SHALL BE REMOVED AT THE CLOSE OF EACH DAY BY THE CONTRACTOR AT HIS EXPENSE.
- EXISTING DRAINAGE FACILITIES SHALL NOT BE UNNECESSARILY DISTURBED. THE CONTRACTOR SHALL PROVIDE TEMPORARY DRAINAGE FACILITIES WHEREVER NECESSARY TO MAINTAIN EXISTING DRAINAGE OUTLETS. THIS WORK SHALL BE INCLUDED IN THE COST OF RELATED PAY ITEMS.
- AREAS DISTURBED BY CONSTRUCTION SHALL BE KEPT TO A MINIMUM. ALL AREAS DISTURBED UNNECESSARILY SHALL BE RESTORED AS REQUIRED IN THE SPECIAL PROVISIONS AT THE CONTRACTOR'S EXPENSE.
- IT SHALL BE THE CONTRACTOR'S RESPONSIBILITY TO NOTIFY J.U.L.I.E. AT LEAST 48 HOURS PRIOR TO EXCAVATION TO VERIFY LOCATIONS OF ALL UTILITIES.
- CONTRACTOR SHALL PROVIDE THE ENGINEER WITH A VIDEO RECORDING DETAILING ALL SURFACE CONDITIONS WITHIN THE PROJECT AREA PRIOR TO EXCAVATION. ALL RESTORATION SHALL BE COMPLETED TO THE SATISFACTION OF THE OWNER AND ENGINEER.
- CONTRACTOR SHALL BE RESPONSIBLE AT ALL TIMES FOR TRAFFIC CONTROL AND PROTECTION. THIS WORK SHALL BE INCLUDED IN THE COST OF RELATED PAY ITEMS.
- ITEMS OF WORK LISTED IN THE SUMMARY OF QUANTITIES NOT SPECIFICALLY CALLED OUT ON THE PLANS SHALL BE PERFORMED AS DIRECTED BY THE ENGINEER.
- THE CONTRACTOR SHALL KEEP AN "AS BUILT" SET OF DRAWINGS WHICH WILL SHOW ANY CHANGES MADE IN THE FIELD WHICH ARE DIFFERENT THAN WHAT IS SHOWN ON THE PLANS. TWO (2) COPIES OF THE "AS BUILT" DRAWINGS ARE TO BE SUBMITTED TO THE ENGINEER BEFORE THE PROJECT IS ACCEPTED BY THE OWNER.
- CONTRACTOR SHALL ESTABLISH LOCATION OF ALL SIGNS AND MARKING FOR APPROVAL BY THE ENGINEER PRIOR TO INSTALLATION.
- ALL PLANT MATERIALS SHALL CONFORM TO THE LATEST EDITION OF AMERICAN STANDARD FOR NURSERY STOCK AS PUBLISHED BY THE AMERICAN NURSERY AND LANDSCAPE ASSOCIATION, 230 SOUTHERN BUILDING, WASHINGTON D.C. 20005 (ANSI Z60.1)
- ALL PLANTS OF THE SAME SPECIES SHALL BE OBTAINED FROM THE SAME NURSERY SOURCE FROM APPROVED IDOT SUPPLIERS UNLESS APPROVED BY THE ENGINEER.
- THE LANDSCAPE CONTRACTOR SHALL INFORM THE ENGINEER AS EACH PHASE OF WORK IS UNDERTAKEN TO ALLOW THE ENGINEER TO BE PRESENT DURING THE WORK.
- THE CONTRACTOR SHALL STAKE THE LOCATION OF ALL TREES AND OTHER LANDSCAPE FEATURES FOR APPROVAL BY THE ENGINEER.
- THE CONTRACTOR SHALL GIVE AT LEAST 48 HOURS NOTICE TO THE ENGINEER PRIOR TO PLANTING OPERATIONS TO VERIFY PLANTS IMMEDIATELY PRIOR TO PLANTING. IF NOTICE IS NOT GIVEN BY THE CONTRACTOR, HE SHALL REMOVE/REPLACE PLANTS AS DIRECTED BY THE ENGINEER AT NO ADDITIONAL EXPENSE TO THE OWNER.
- PRUNE BROKEN OR CROSS BRANCHING AT THE TIME OF PLANTING. DO NOT REMOVE LEADER.
- TREES SHALL BE SET IN TRUE, VERTICAL ALIGNMENT AFTER PLANTING.
- ALL PLANTS SHALL BE PLANTED PER THE LANDSCAPE PLAN AND SPECIFICATIONS. PLANTINGS NOT FOUND TO BE IN COMPLIANCE SHALL BE REPLANTED CORRECTLY AT NO ADDITIONAL EXPENSE TO THE OWNER.
- ADJUST SHRUBS, PERENNIALS, AND GROUND COVER SPACING AS NECESSARY TO EVENLY FILL PLANTING BEDS.
- THE ENGINEER OR OWNER RESERVES THE RIGHT TO REJECT PLANTS ON SITE WHETHER STOCK PILED OR PLANTED IN PLACE. REJECTED PLANTS SHALL BE REMOVED IMMEDIATELY FROM SITE.
- ALL PLANTS SHALL BE GROUPED TOGETHER BY SPECIES AND SIZE AND SHALL BE COVERED WITH MULCH OR COMPOST TO PREVENT DESICCATION.
- SUBSTITUTION OF PLANT MATERIAL DUE TO LACK OF AVAILABILITY MUST BE APPROVED BY THE ENGINEER. SUBSTITUTE PLANTS SHALL BE THE SAME SIZE, OR LARGER, THAN THE ITEMS SPECIFIED.
- THE CONTRACTOR SHALL COMPLY WITH THE FOLLOWING INSTALLATION AND MAINTENANCE PROCEDURES:
-NEW TREES AND SHRUBS SHALL BE WATERED AND MAINTAINED UNTIL FIRMLY ESTABLISHED.
-NEW TREES AND SHRUBS SHALL BE PRUNED TO REMOVE ALL DEAD AND DAMAGED WOODS.
- WHEN THE PLANS OR SPECIAL PROVISIONS INCLUDE INFORMATION PERTAINING TO THE LOCATION OF UNDERGROUND UTILITY FACILITIES, SUCH INFORMATION REPRESENTS ONLY THE OPINION OF THE VILLAGE OF LANSING AS TO THE LOCATION OF SUCH UTILITIES AND IS ONLY INCLUDED FOR THE CONVENIENCE OF THE BIDDER.

Planting Area 2		Winterhoff Park	
Perennial Name	Quantity	Unit	
Stella D'Oro Daylily	22	Gallon	
Pennisetum Alopecuroides	6	Gallon	
Area:	20	SY	
Perimeter:	50	LF	
Stone Retaining Wall:	30	SQ FT	
Outcropping Stone:	0	SQ FT	
Stone Bedding Material	2.5	Ton	

Planting Area 3		Winterhoff Park	
Perennial Name	Quantity	Unit	
Goldenrod Little Lemon	10	Gallon	
False Indigo Purple Smoke	5	Gallon	
Stella D'Oro Daylily	20	Gallon	
Anise Hyssop	18	Gallon	
Summer Beauty Allium	10	Gallon	
Blue Ice Blue Star	13	Gallon	
Area:	50	SY	
Perimeter:	85	LF	
Cut Drywall Bed Edge:	50	SQ FT	
Outcropping Stone:	0	SQ FT	
Stone Bedding Material	4.3	Ton	

Planting Area 4		SW Corner @ 178th St	
Perennial Name	Quantity	Unit	
Anise Hyssop	11	Gallon	
Sea Lavender	9	Gallon	
Dwarf Pennisetum	11	Gallon	
Prairie Blazing Star	9	Gallon	
Marjoram	1	Gallon	
Sedum Voodoo/Matrona	16	Gallon	
Stachys Big Ears	18	Gallon	
Area:	50	SY	
Perimeter:	80	LF	
Cut Drywall Bed Edge:	47	SQ FT	
Outcropping Stone:	80	SQ FT	
Stone Bedding Material	4	Ton	

Planting Area 5		SE Corner @ 178th St	
Perennial Name	Quantity	Unit	
False Indigo Purple Smoke	8	Gallon	
Purple Palace Coralbell	18	Gallon	
Catmint	12	Gallon	
Black-Eyed Susan	14	Gallon	
Golden Jubilee Hyssop	16	Gallon	
Calamintha	13	Gallon	
Salvia May Night	17	Gallon	
Snow In Summer	32	Gallon	
Area:	70	SY	
Perimeter:	100	LF	
Cut Drywall Bed Edge:	58	SQ FT	
Outcropping Stone:	100	SQ FT	
Stone Bedding Material	5	Ton	

Planting Area 6		NE Corner @ 178th St	
Perennial Name	Quantity	Unit	
Sedum Kamtchaticum	21	Gallon	
Huskers Red Beardtongue	12	Gallon	
Obsidian Coralbells	6	Gallon	
Goatsbeard Horatico	6	Gallon	
Lambs Ear	27	Gallon	
Blue Star	10	Gallon	
Little Bluestem	10	Gallon	
Golden Jubilee Hyssop	13	Gallon	
Catmint	13	Gallon	
Calamintha	10	Gallon	
Purple Palace Coralbell	10	Gallon	
Area:	70	SY	
Perimeter:	100	LF	
Cut Drywall Bed Edge:	58	SQ FT	
Outcropping Stone:	100	SQ FT	
Stone Bedding Material	5	Ton	

Planting Area 7		NW Corner @ 178th St	
Perennial Name	Quantity	Unit	
False Indigo Purple Smoke	12	Gallon	
Purple Palace Coralbell	26	Gallon	
Catmint	19	Gallon	
Black-Eyed Susan	21	Gallon	
Golden Jubilee Hyssop	24	Gallon	
Calamintha	20	Gallon	
Salvia May Night	25	Gallon	
Snow In Summer	45	Gallon	
Area:	70	SY	
Perimeter:	100	LF	
Cut Drywall Bed Edge:	58	SQ FT	
Outcropping Stone:	100	SQ FT	
Stone Bedding Material	5	Ton	

Planting Area 8		SE Corner @ Chicago Ave	
Perennial Name	Quantity	Unit	
Geranium	60	Gallon	
Columbine	60	Gallon	
Brunnera	60	Gallon	
Area:	70	SY	
Perimeter:	100	LF	
Cut Drywall Bed Edge:	58	SQ FT	
Outcropping Stone:	0	SQ FT	
Stone Bedding Material	5	Ton	

Planting Area 9		SW Corner @ Chicago Ave	
Perennial Name	Quantity	Unit	
False Indigo Purple Smoke	10	Gallon	
Purple Palace Coralbell	12	Gallon	
Catmint	12	Gallon	
Black-Eyed Susan	14	Gallon	
Golden Jubilee Hyssop	10	Gallon	
Calamintha	13	Gallon	
Salvia May Night	17	Gallon	
Snow In Summer	25	Gallon	
Area:	50	SY	
Perimeter:	75	LF	
Cut Drywall Bed Edge:	44	SQ FT	
Outcropping Stone:	75	SQ FT	
Stone Bedding Material	3.8	Ton	

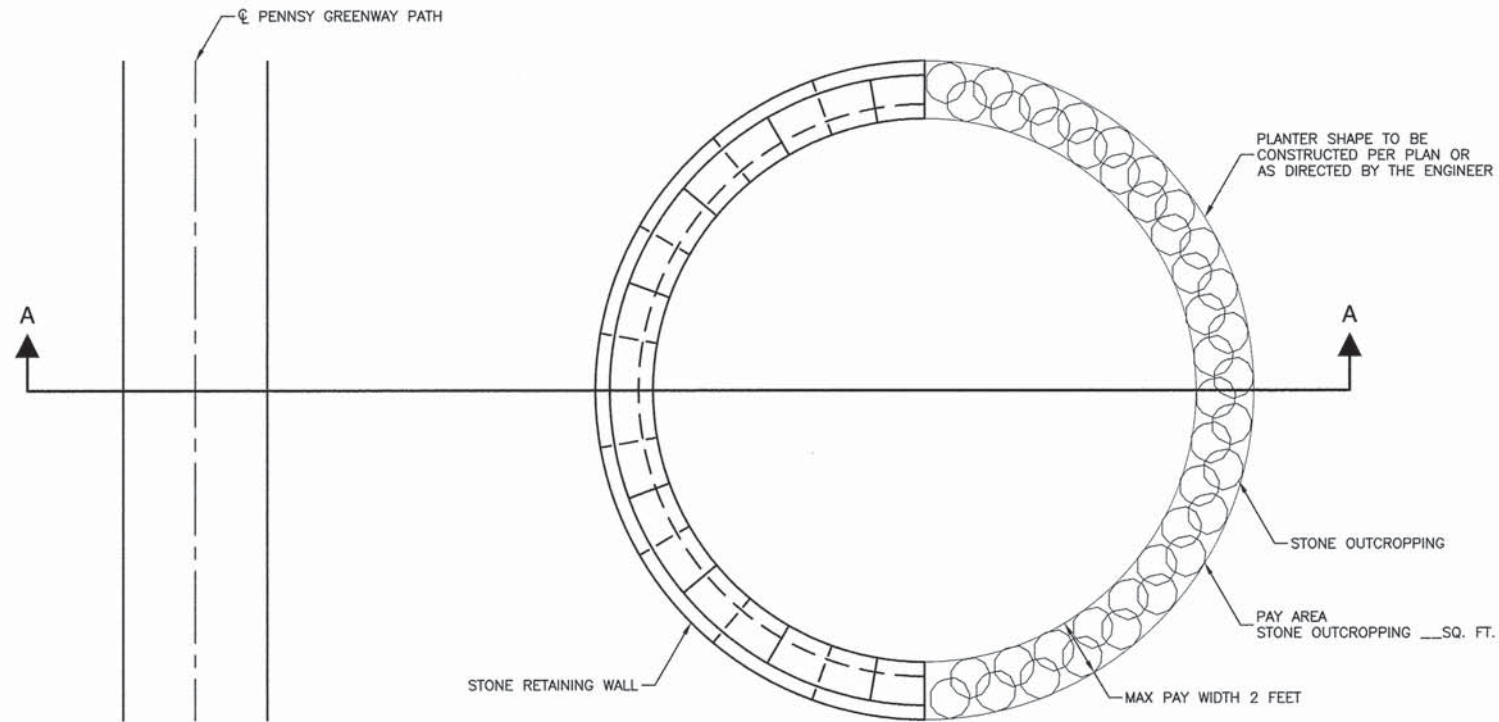
Planting Area 10		SW Corner @ Chicago	
Perennial Name	Quantity	Unit	
Geranium	72	Gallon	
Columbine	72	Gallon	
Brunnera	71	Gallon	
Area:	70	SY	
Perimeter:	100	LF	
Cut Drywall Bed Edge:	58	SQ FT	
Outcropping Stone:	0	SQ FT	
Stone Bedding Material	5	Ton	

Planting Area 11		NW Corner @ Chicago	
Perennial Name	Quantity	Unit	
Sedum Kamtchaticum	26	Gallon	
Huskers Red Beardtongue	12	Gallon	
Obsidian Coralbells	5	Gallon	
Goatsbeard Horatico	5	Gallon	
Lambs Ear	30	Gallon	
Blue Star	13	Gallon	
Little Bluestem	13	Gallon	
Golden Jubilee Hyssop	24	Gallon	
Catmint	24	Gallon	
Calamintha	12	Gallon	
Purple Palace Coralbell	10	Gallon	
Area:	70	SY	
Perimeter:	100	LF	
Cut Drywall Bed Edge:	58	SQ FT	
Outcropping Stone:	100	SQ FT	
Stone Bedding Material	5	Ton	

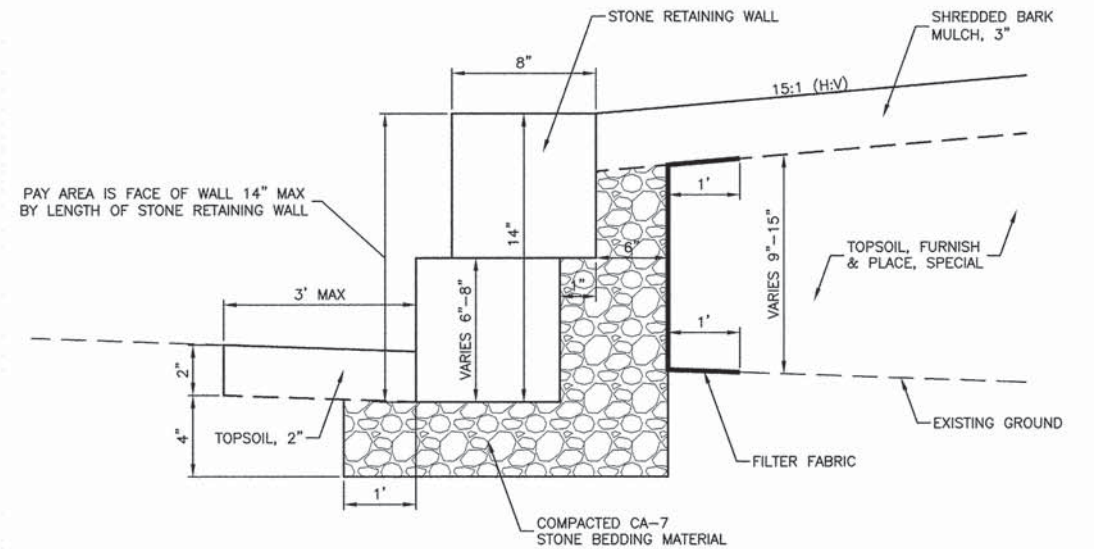
Planting Area 12			
Perennial Name	Quantity	Unit	
Anise Hyssop	10	Gallon	
Sea Lavender	10	Gallon	
Dwarf Pennisetum	10	Gallon	
Prairie Blazing Star	10	Gallon	
Marjoram	10	Gallon	
Sedum Voodoo/Matrona	13	Gallon	
Stachys Big Ears	15	Gallon	
Area:	50	SY	
Perimeter:	75	LF	
Cut Drywall Bed Edge:	44	SQ FT	
Outcropping Stone:	75	SQ FT	
Stone Bedding Material	3.8	Ton	

Planting Area 13 x 4		Four Corners @ Bernice	
Perennial Name	Quantity	Unit	
False Indigo Purple Smoke	8	Gallon	
Purple Palace Coralbell	16	Gallon	
Catmint	10	Gallon	
Black-Eyed Susan	12	Gallon	
Golden Jubilee Hyssop	14	Gallon	
Calamintha	13	Gallon	
Salvia May Night	15	Gallon	
Snow In Summer	28	Gallon	
Area:	50	SY	
Perimeter:	80	LF	
Cut Drywall Bed Edge:	47	SQ FT	
Outcropping Stone:	0	SQ FT	
Stone Bedding Material	4	Ton	

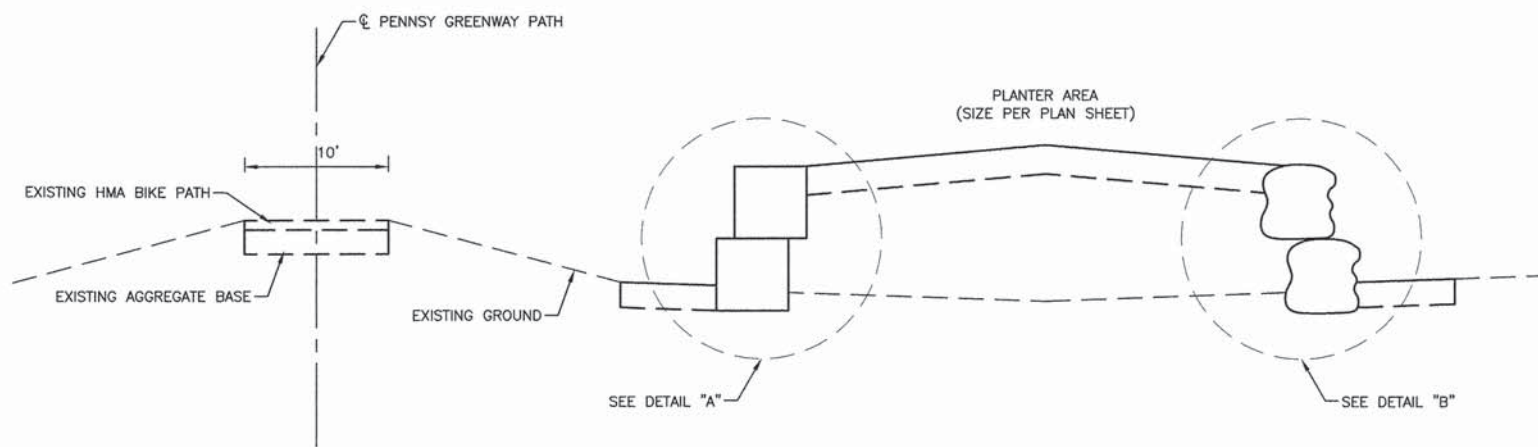
Perennial Summary		
Plant Name	Quantity	Size
Anise Hyssop	39	Gallon
Black-Eyed Susan	97	Gallon
Blue Ice Blue Star	16	Gallon
Blue Star	23	Gallon
Brunnera	131	Gallon
Calamintha	120	Gallon
Catmint	130	Gallon
Columbine	132	Gallon
Dwarf Pennisetum	21	Gallon
False Indigo Purple Smoke	67	Gallon
Geranium	132	Gallon
Goatsbeard Horatico	11	Gallon
Golden Jubilee Hyssop	153	Gallon
Goldenrod Little Lemon	10	Gallon
Huskers Red Beardtongue	24	Gallon
Lambs Ear	57	Gallon
Little Bluestem	23	Gallon
Marjoram	11	Gallon
Obsidian Coralbells	11	Gallon
Pennisetum Alopecuroides	6	Gallon
Prairie Blazing Star	19	Gallon
Purple Palace Coralbell	140	Gallon
Salvia May Night	119	Gallon
Sea Lavender	19	Gallon
Sedum Kamtchaticum	47	Gallon
Sedum Voodoo/Matrona	29	Gallon
Snow In Summer	214	Gallon
Stachys Big Ears	33	Gallon
Stella D'Oro Daylily	42	Gallon
Summer Beauty Allium	10	Gallon
Total	1886	



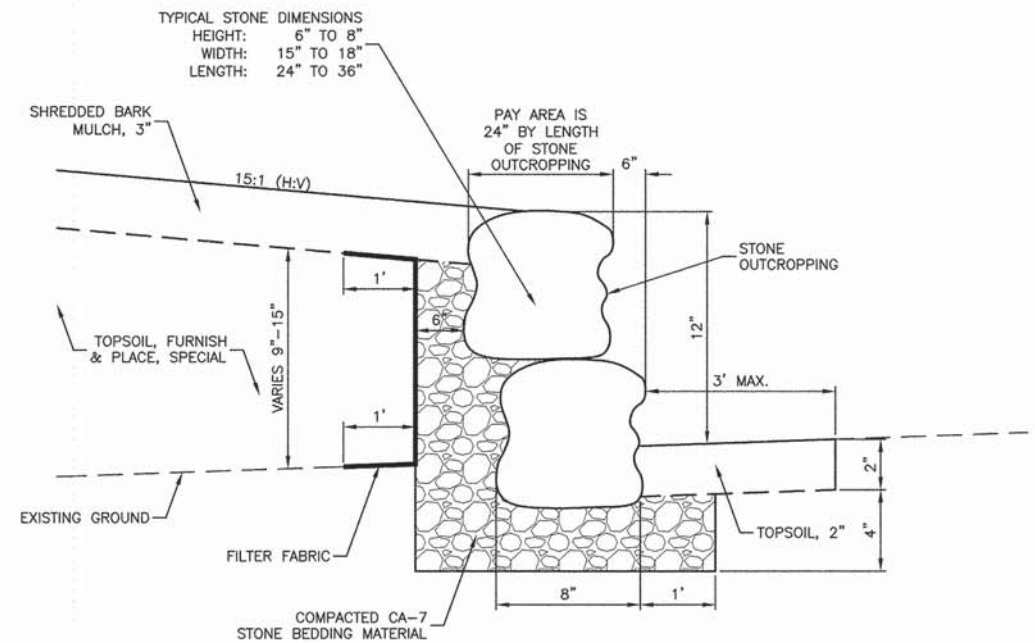
PLAN VIEW



DETAIL "A"



ELEVATION "A-A"



DETAIL "B"

NOTE:

MATERIAL EXCAVATED TO INSTALL STONE WALLS/OUTCROPPING SHALL BE USED TO FILL PLANTERS. EXCAVATION AND PLACEMENT OF MATERIAL SHALL BE INCIDENTAL TO THE CONTRACT PAY ITEMS.

FILE NAME = 06484-TYPX-01 - IDOT P01

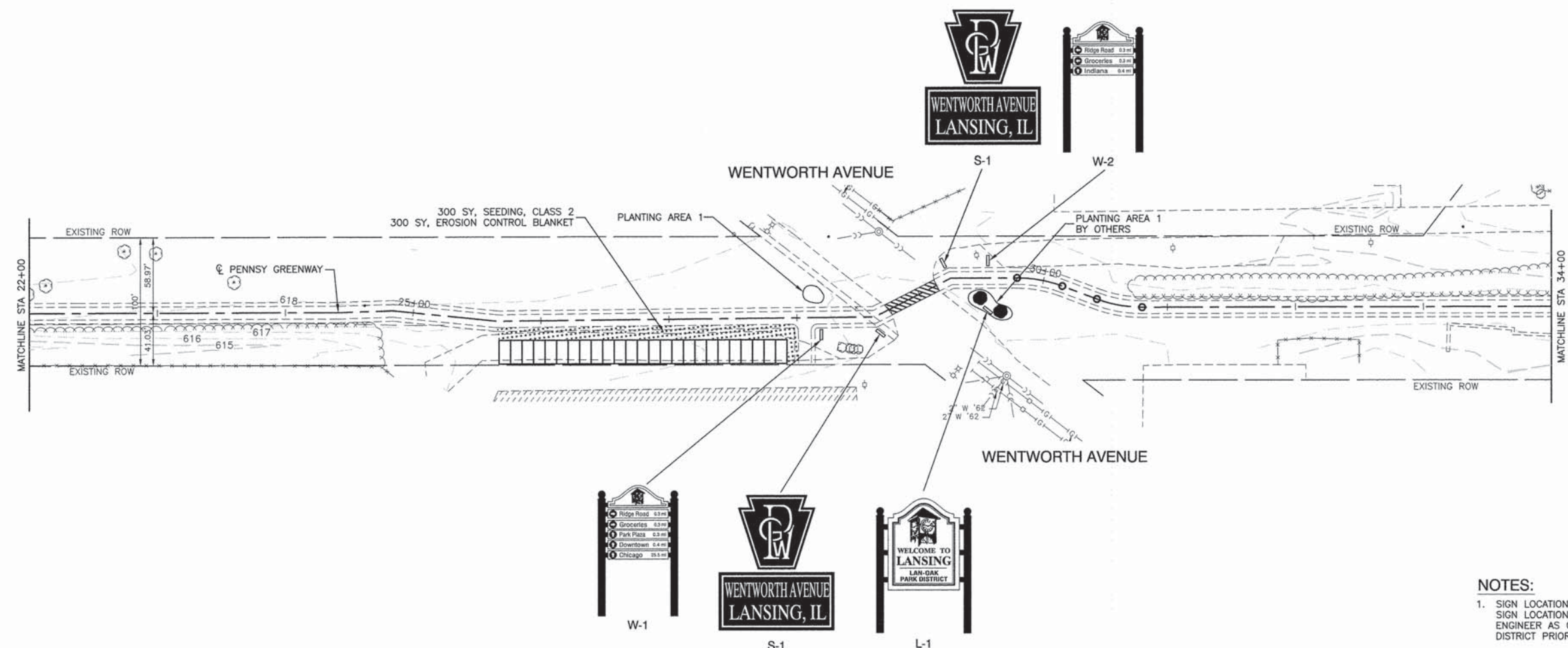
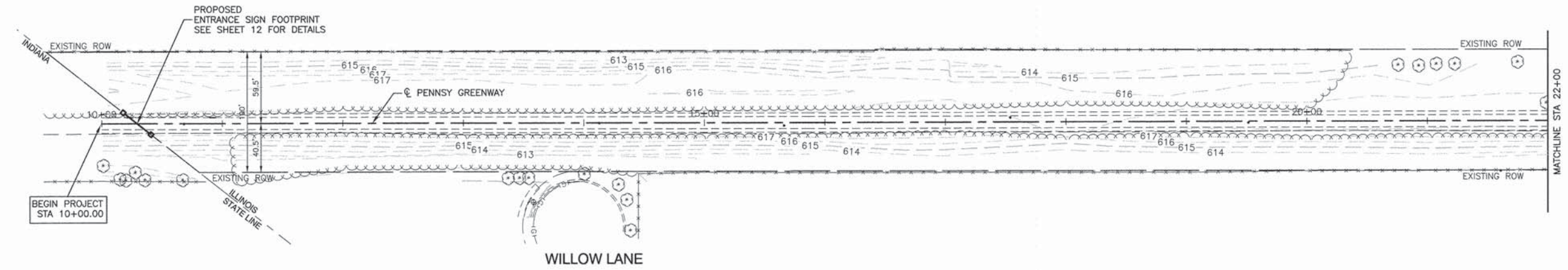
USER NAME =	DESIGNED -- BWT	REVISIONS --
	CHECKED -- JMN	REVISIONS --
PLOT SCALE =	DRAWN -- RG	REVISIONS --
PLOT DATE = 01-30-15	CHECKED -- AG	REVISIONS --

STATE OF ILLINOIS
DEPARTMENT OF TRANSPORTATION

LAN-OAK PARK DISTRICT
PENNSY GREENWAY SPUR BIKE PATH
PLANTING AREA GENERAL DETAILS

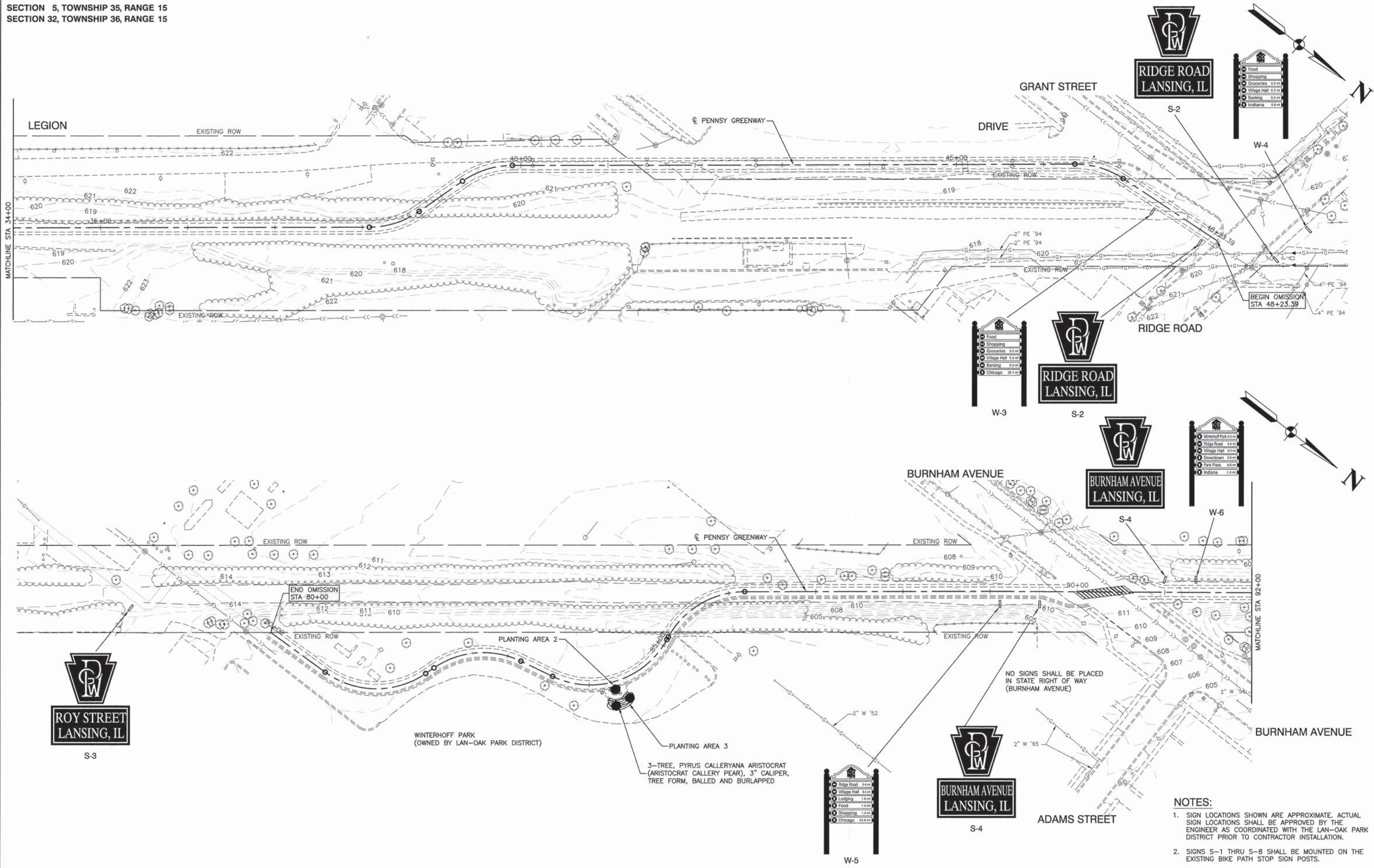
SCALE: NONE SHEET NO. 4 OF 12 SHEETS STA. TO STA.

F.A. RTE.	SECTION	COUNTY	TOTAL SHEETS	SHEET NO.
	06-P4045-02-SP	COOK	12	4
CONTRACT NO. 61B32				
FED. ROAD DIST. NO. 1 ILLINOIS FED. AID PROJECT TE-00D1(783)				



- NOTES:**
- SIGN LOCATIONS SHOWN ARE APPROXIMATE. ACTUAL SIGN LOCATIONS SHALL BE APPROVED BY THE ENGINEER AS COORDINATED WITH THE LAN-OAK PARK DISTRICT PRIOR TO CONTRACTOR INSTALLATION.
 - SIGNS S-1 THRU S-8 SHALL BE MOUNTED ON THE EXISTING BIKE PATH STOP SIGN POSTS.

FILE NAME = 06494-PLAN-01 - IDOT P01	USER NAME =	DESIGNED -- BWT	REVISED --	STATE OF ILLINOIS DEPARTMENT OF TRANSPORTATION	LAN-OAK PARK DISTRICT PENNSY GREENWAY SPUR BIKE PATH IMPROVEMENT PLANS			F.A. RTE.	SECTION	COUNTY	TOTAL SHEETS	SHEET NO.
	PLOT SCALE =	DRAWN -- MD/RG	REVISED --		SCALE: 1"=50'	SHEET NO. 5	OF 12 SHEETS	STA. TO STA.	06-P4045-02-SP	COOK	12	5
PLOT DATE = 01-30-15	CHECKED -- AG	REVISED --			FED. ROAD DIST. NO. 1 ILLINOIS FED. AID PROJECT TE-00D1(783)			CONTRACT NO. 61B32				



- NOTES:**
- SIGN LOCATIONS SHOWN ARE APPROXIMATE. ACTUAL SIGN LOCATIONS SHALL BE APPROVED BY THE ENGINEER AS COORDINATED WITH THE LAN-OAK PARK DISTRICT PRIOR TO CONTRACTOR INSTALLATION.
 - SIGNS S-1 THRU S-8 SHALL BE MOUNTED ON THE EXISTING BIKE PATH STOP SIGN POSTS.

FILE NAME = 06494-PLAN-01 - IDOT P2

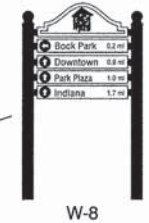
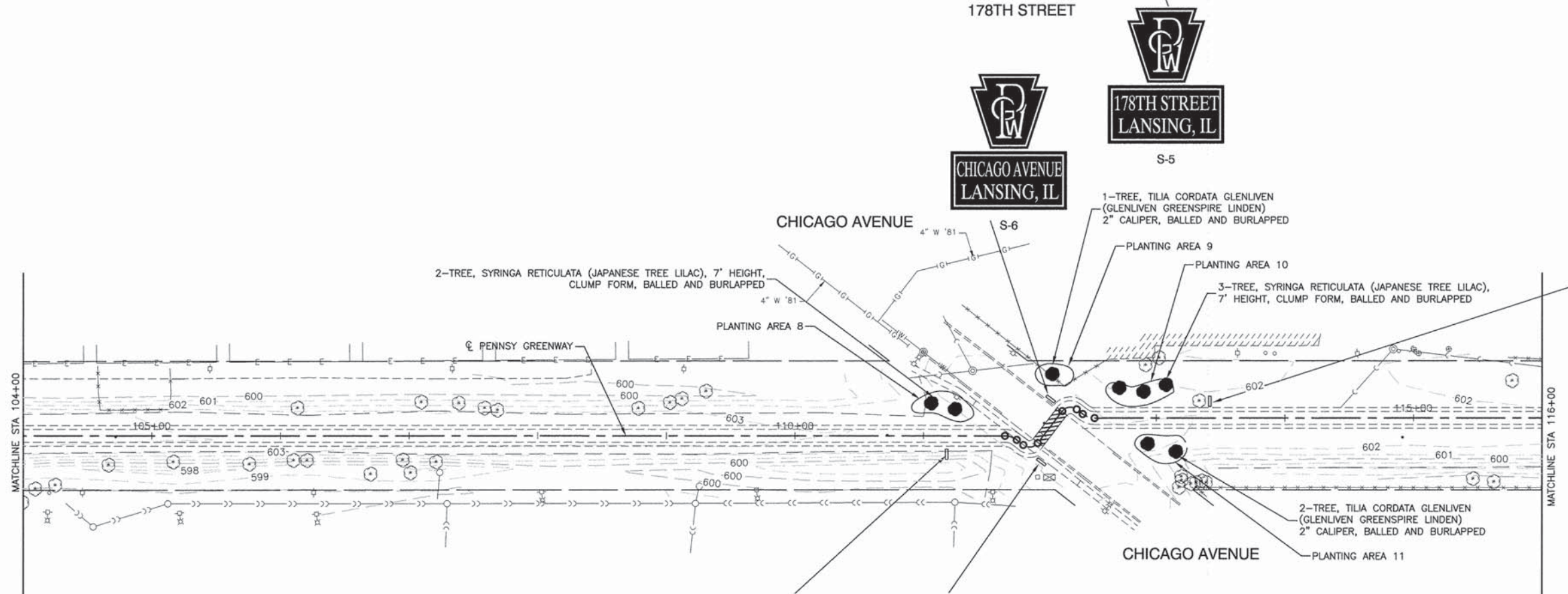
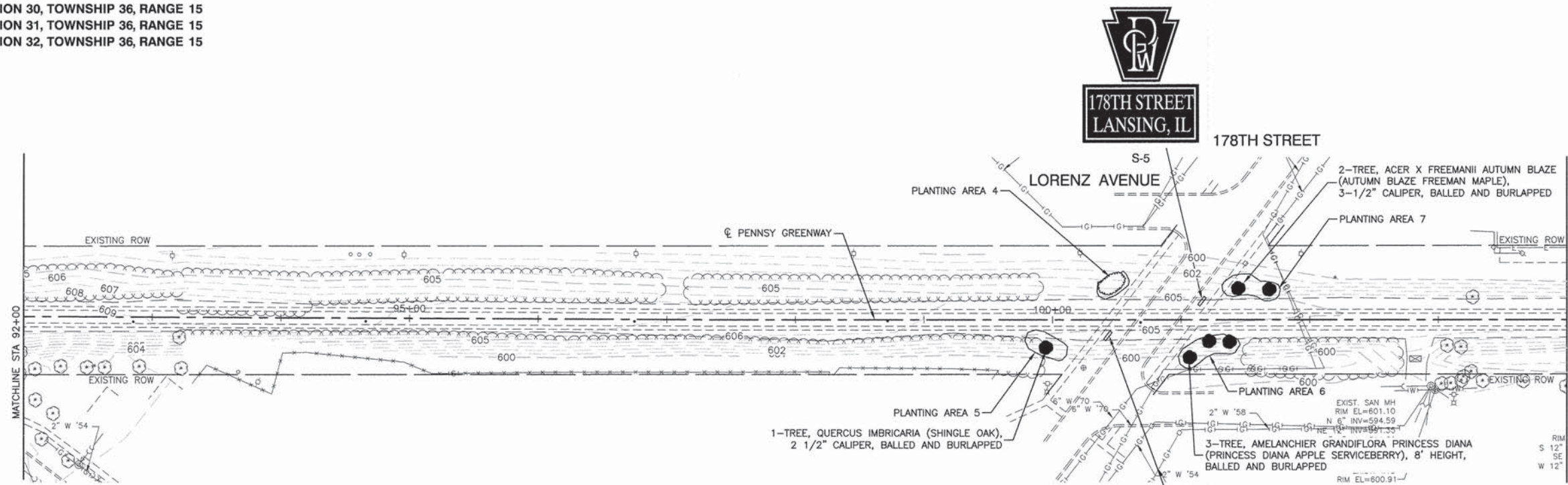
USER NAME =	DESIGNED -- BWT	REVISED --
PLOT SCALE =	CHECKED -- JMN	REVISED --
PLOT DATE = 01-30-15	DRAWN -- MD/RG	REVISED --
	CHECKED -- AG	REVISED --

STATE OF ILLINOIS
DEPARTMENT OF TRANSPORTATION

LAN-OAK PARK DISTRICT
PENNSY GREENWAY SPUR BIKE PATH
IMPROVEMENT PLANS

SCALE: 1"=50'
SHEET NO. 6 OF 12 SHEETS
STA. TO STA.

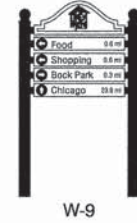
F.A. RTE.	SECTION	COUNTY	TOTAL SHEETS	SHEET NO.
	06-P4045-02-SP	COOK	12	6
CONTRACT NO. 61B32				
FED. ROAD DIST. NO. 1 ILLINOIS FED. AID PROJECT TE-00D1(783)				



- NOTES:**
- SIGN LOCATIONS SHOWN ARE APPROXIMATE. ACTUAL SIGN LOCATIONS SHALL BE APPROVED BY THE ENGINEER AS COORDINATED WITH THE LAN-OAK PARK DISTRICT PRIOR TO CONTRACTOR INSTALLATION.
 - SIGNS S-1 THRU S-8 SHALL BE MOUNTED ON THE EXISTING BIKE PATH STOP SIGN POSTS.

FILE NAME = 06494-PLAN-01 - IDOT P3	USER NAME =	DESIGNED -- BWT	REVISED --	STATE OF ILLINOIS DEPARTMENT OF TRANSPORTATION	LAN-OAK PARK DISTRICT PENNSY GREENWAY SPUR BIKE PATH IMPROVEMENT PLANS			F.A. RTE.	SECTION	COUNTY	TOTAL SHEETS	SHEET NO.
	PLOT SCALE =	CHECKED -- JMN	REVISED --		06-P4045-02-SP	COOK	12	7				
	PLOT DATE = 01-30-15	DRAWN -- MD/RG	REVISED --		CONTRACT NO. 61B32							
		CHECKED -- AG	REVISED --		FED. ROAD DIST. NO. 1 ILLINOIS FED. AID PROJECT TE-00D1(783)							
					SCALE: 1"=60'	SHEET NO. 7	OF 12 SHEETS	STA.	TO STA.			

SECTION 30, TOWNSHIP 36, RANGE 15
 SECTION 31, TOWNSHIP 36, RANGE 15
 SECTION 32, TOWNSHIP 36, RANGE 15



- NOTES:**
- SIGN LOCATIONS SHOWN ARE APPROXIMATE. ACTUAL SIGN LOCATIONS SHALL BE APPROVED BY THE ENGINEER AS COORDINATED WITH THE LAN-OAK PARK DISTRICT PRIOR TO CONTRACTOR INSTALLATION.
 - SIGNS S-1 THRU S-8 SHALL BE MOUNTED ON THE EXISTING BIKE PATH STOP SIGN POSTS.

FILE NAME = 06494-PLAN-01 - IDOT P4

USER NAME =	DESIGNED -- BWT	REVISED --
	CHECKED -- JMN	REVISED --
PLOT SCALE =	DRAWN -- MD/RG	REVISED --
PLOT DATE = 01-30-15	CHECKED -- AG	REVISED --

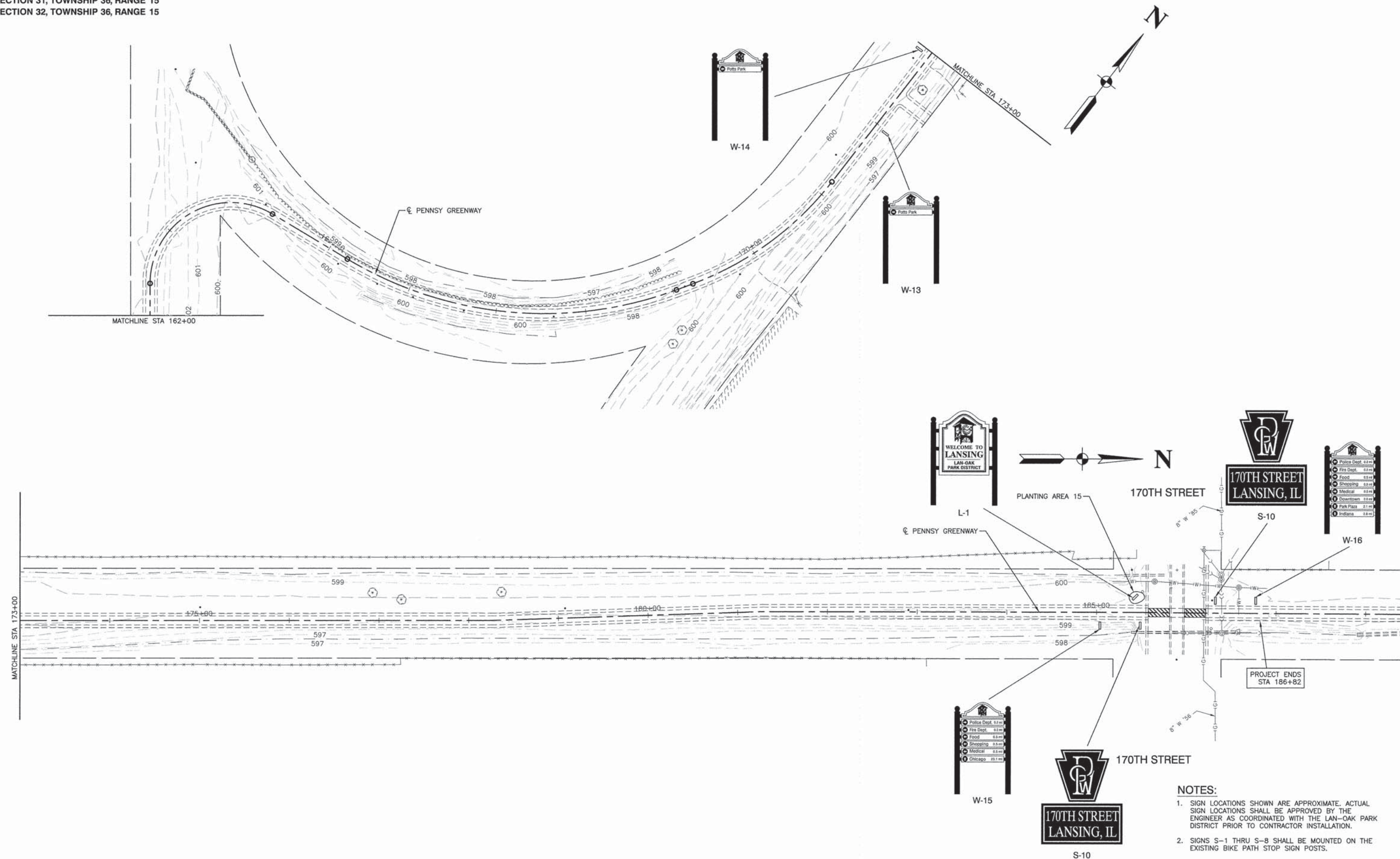
STATE OF ILLINOIS
 DEPARTMENT OF TRANSPORTATION

LAN-OAK PARK DISTRICT
 PENNSY GREENWAY SPUR BIKE PATH
 IMPROVEMENT PLANS

SCALE: 1"=50' SHEET NO. 8 OF 12 SHEETS STA. TO STA.

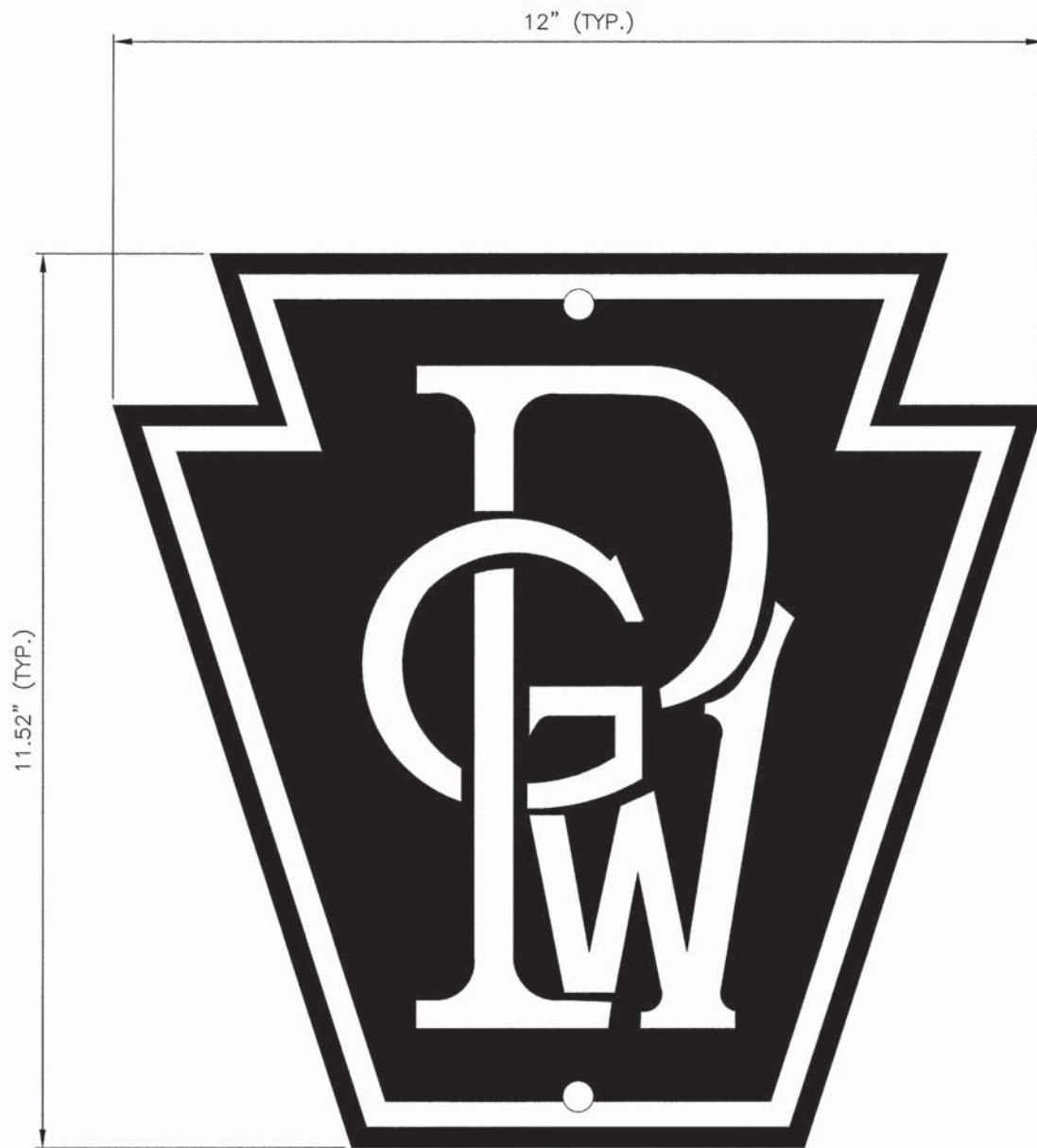
F.A. RTE.	SECTION	COUNTY	TOTAL SHEETS	SHEET NO.
	06-P4045-02-SP	COOK	12	8
CONTRACT NO. 61B32				
FED. ROAD DIST. NO. 1 ILLINOIS FED. AID PROJECT TE-00D1(783)				

SECTION 30, TOWNSHIP 36, RANGE 15
 SECTION 31, TOWNSHIP 36, RANGE 15
 SECTION 32, TOWNSHIP 36, RANGE 15



- NOTES:**
- SIGN LOCATIONS SHOWN ARE APPROXIMATE. ACTUAL SIGN LOCATIONS SHALL BE APPROVED BY THE ENGINEER AS COORDINATED WITH THE LAN-OAK PARK DISTRICT PRIOR TO CONTRACTOR INSTALLATION.
 - SIGNS S-1 THRU S-8 SHALL BE MOUNTED ON THE EXISTING BIKE PATH STOP SIGN POSTS.

FILE NAME = 06494-PLAN-01 - IDOT.PS	USER NAME =	DESIGNED -- BWT	REVISED --	STATE OF ILLINOIS DEPARTMENT OF TRANSPORTATION	LAN-OAK PARK DISTRICT PENNSY GREENWAY SPUR BIKE PATH IMPROVEMENT PLANS	F.A. RTE.	SECTION	COUNTY	TOTAL SHEETS	SHEET NO.
	PLOT SCALE =	CHECKED -- JMN	REVISED --			06-P4045-02-SP	COOK	12	9	
	PLOT DATE = 01-30-15	DRAWN -- MD/RG	REVISED --			CONTRACT NO. 61B32				
	CHECKED -- AG	REVISED --		SCALE: 1"=50'	SHEET NO. 9 OF 12 SHEETS	STA. TO STA.	FED. ROAD DIST. NO. 1 ILLINOIS FED. AID PROJECT TE-00D1(783)			



S-1 (X2)



S-2 (X2)



S-3 (X1)



S-4 (X2)



S-5 (X2)



S-6 (X2)



S-7 (X2)



S-8 (X2)



S-9 (X2)



S-10 (X2)

NOTE:

EACH PENNSY GREENWAY SIGN IS 0.71 SQ. FT. IN AREA
 EACH STREET NAME SIGN IS 0.5 SQ. FT. IN AREA
 PAID FOR AS SIGN PANEL, TYPE 1

FILE NAME = 06494-MISC-01 - P01

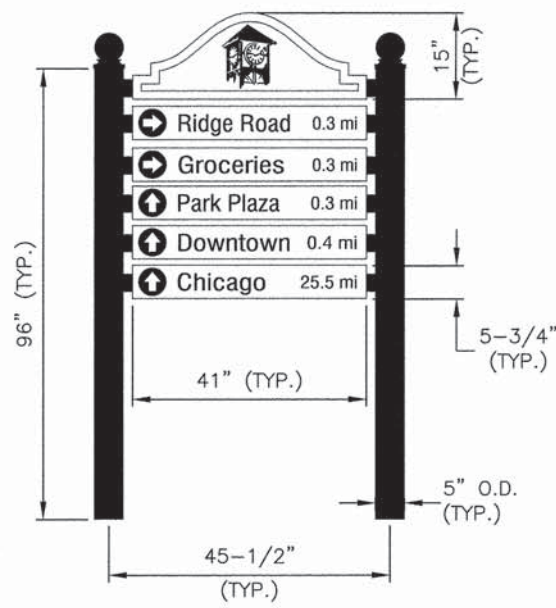
USER NAME =	DESIGNED -- BWT	REVISIONS --
	CHECKED -- JMN	REVISIONS --
PLOT SCALE =	DRAWN -- LTL/RG	REVISIONS --
PLOT DATE = 01-30-15	CHECKED -- AG	REVISIONS --

STATE OF ILLINOIS
 DEPARTMENT OF TRANSPORTATION

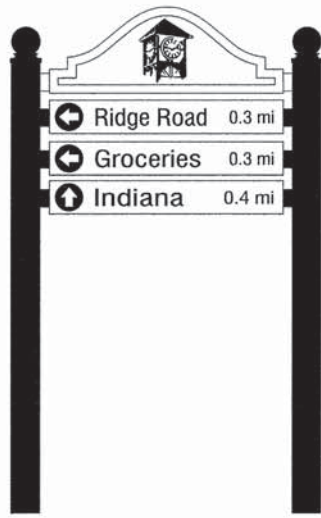
LAN-OAK PARK DISTRICT
 PENNSY GREENWAY SPUR BIKE PATH
 TRAIL SIGNAGE

SCALE: NONE SHEET NO. 10 OF 12 SHEETS STA. TO STA.

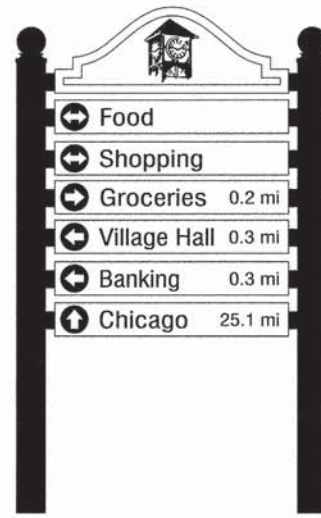
F.A. RTE.	SECTION	COUNTY	TOTAL SHEETS	SHEET NO.
	06-P4045-02-SP	COOK	12	10
FED. ROAD DIST. NO. 1 ILLINOIS			FED. AID PROJECT TE-00D1(783) CONTRACT NO. 61B32	



W-1



W-2



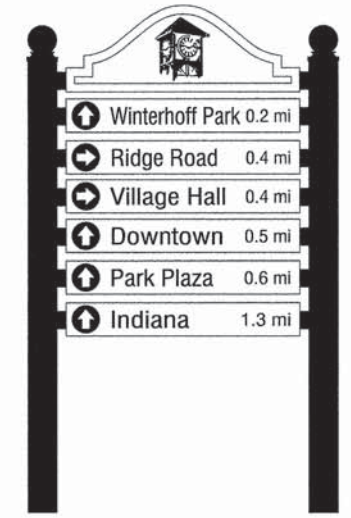
W-3



W-4

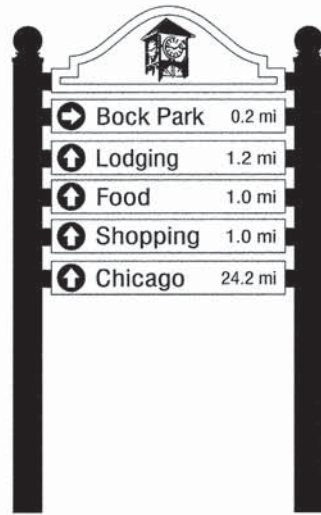


W-5

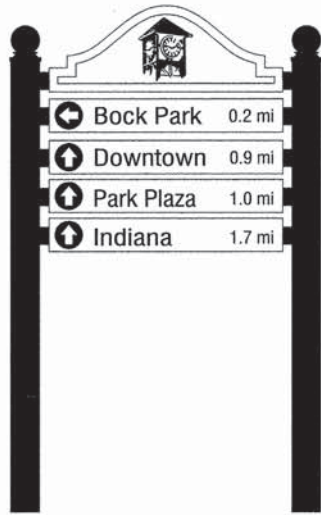


W-6

SIGN	TOTAL SIGN PANEL TYPE 1, SPECIAL
W-1	11.3 SQ. FT.
W-2	7.9 SQ. FT.
W-3	13 SQ. FT.
W-4	13 SQ. FT.
W-5	13 SQ. FT.
W-6	13 SQ. FT.
W-7	11.3 SQ. FT.
W-8	9.6 SQ. FT.
W-9	9.6 SQ. FT.
W-10	13 SQ. FT.
W-11	9.6 SQ. FT.
W-12	13 SQ. FT.
W-13	4.5 SQ. FT.
W-14	4.5 SQ. FT.
W-15	13 SQ. FT.
W-16	16.4 SQ. FT.



W-7



W-8



W-9



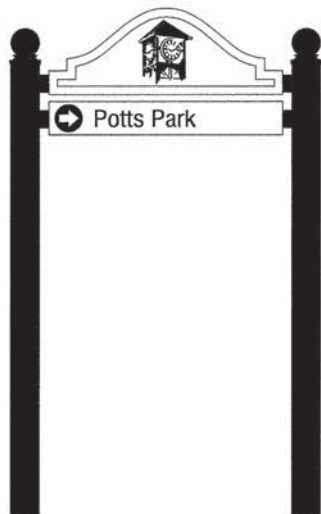
W-10



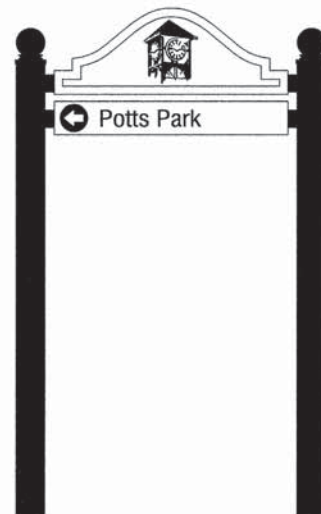
W-11



W-12



W-13



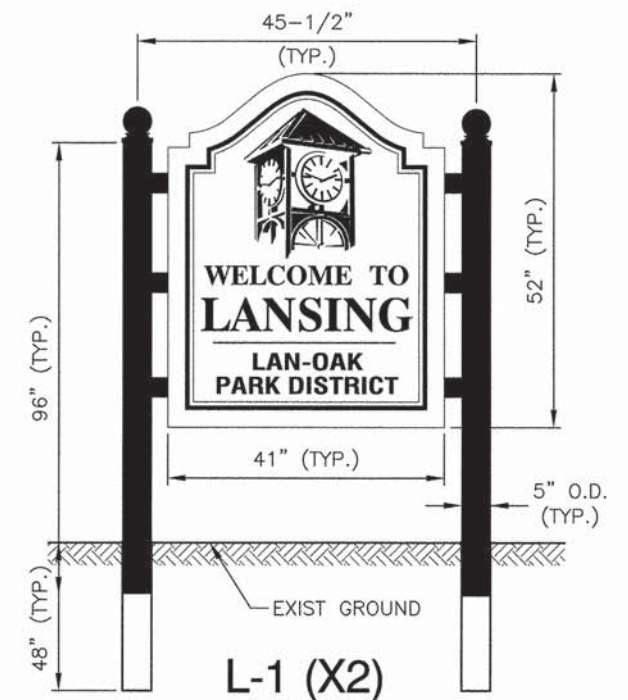
W-14



W-15



W-16



SIGN	TOTAL SIGN PANEL TYPE 2, SPECIAL
L-1	16.4 SQ. FT. EACH

