

| | | | | |
|--|----------------|--------------------|--------------|-----------|
| F.A.S. RTE. | SECTION | COUNTY | TOTAL SHEETS | SHEET NO. |
| 1405 | 05-00095-00-BR | MERCER | 9 | 1 |
| WHA# 1209005 | | CONTRACT NO. 89431 | | |
| ILLINOIS FED. AID PROJECT BR S-1405(107) | | | | |

- 1 = COVER SHEET
- 2 = SUMMARY OF QUANTITIES
- 3 = GENERAL NOTES, SCHEDULES AND TYPICAL SECTIONS
- 4 = PLAN AND PROFILE
- 5 = EROSION CONTROL PLAN
- 6 = BOX CULVERT DETAILS
- 7 = BORING LOGS
- 8-9 = CROSS SECTIONS

DEPARTMENT OF TRANSPORTATION
DIVISION OF HIGHWAYS

PLANS FOR PROPOSED LOCAL AGENCY IMPROVEMENT FEDERAL-AID HBP PROJECT HIGHWAY BRIDGE PROGRAM

F.A.S. ROUTE 1405 (COUNTY HIGHWAY 12)
SECTION 05-00095-00-BR
PROJECT BR S-1405(107)
JOB NO. C-94-130-06
MERCER COUNTY

2015

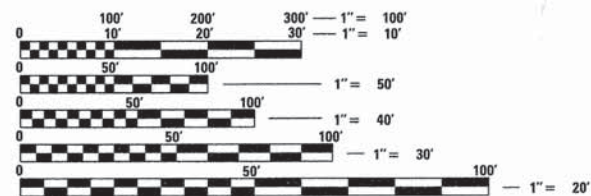


LOCATION OF SECTION INDICATED THIS: - [black rectangle] -

UTILITIES:

AMEREN IP Oneida Telephone Exchange
Attn: Martin Fuller Attn: David Olson
1050 W. Blvd. 129 West Highway
Belleville, IL 62221 Oneida, IL 61467
618-236-6281 (309) 483-3111

Frontier Communications
Attn: Bill Daniel
1145 S. Hall
Roseville, IL 61473
(402) 250-1095

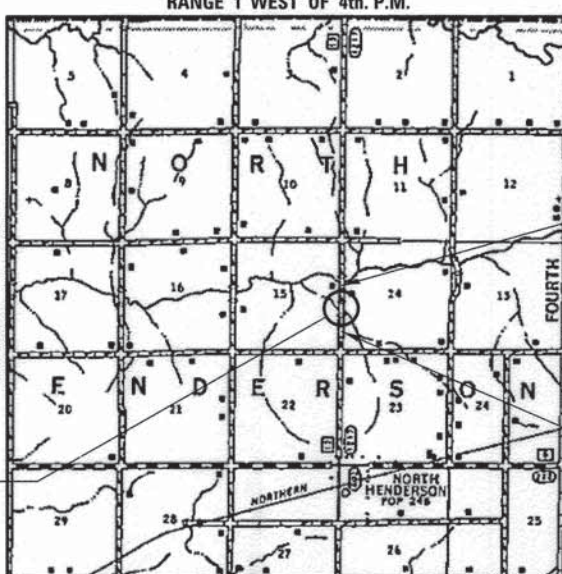


FULL SIZE PLANS HAVE BEEN PREPARED USING STANDARD ENGINEERING SCALES. REDUCED SIZED PLANS WILL NOT CONFORM TO STANDARD SCALES. IN MAKING MEASUREMENTS ON REDUCED PLANS, THE ABOVE SCALES MAY BE USED.

J.U.L.I.E.
JOINT UTILITY LOCATION INFORMATION FOR EXCAVATION
1-800-892-0123
OR 811

PROPOSED STRUCTURE: S.N. 066-3014
A DOUBLE BARREL (10'-0" x 7'-0") REINFORCED CONCRETE BOX CULVERT @ STA. 20+00, SKEWED 30° LEFT AHEAD.

FUNCTIONAL CLASSIFICATION
MAJOR COLLECTOR (NON-URBAN)
DESIGN SPEED 40 MPH
2015 ADT < 400
RURAL NEW/RECONSTRUCTION GUIDELINES



LOCATION MAP

GROSS LENGTH = 200 FT. = 0.038 MILES
NET LENGTH = 200 FT. = 0.038 MILES

CONSTRUCTION ENDS AT STA. 21+00

CONSTRUCTION BEGINS AT STA. 19+00

| | | |
|--|-----------------------------|------|
| MERCER COUNTY HIGHWAY DEPARTMENT | | |
| APPROVED | <i>[Signature]</i> 1/28 | 2015 |
| MERCER COUNTY ENGINEER | | |
| PASSED | <i>[Signature]</i> Feb. 3rd | 2015 |
| DISTRICT 4 ENGINEER OF LOCAL ROADS & STREETS | | |
| RELEASING FOR BID BASED ON LIMITED REVIEW | February 3 | 2015 |
| DEPUTY DIRECTOR OF HIGHWAYS, REGION 3 ENGINEER | | |



Brian K. Converse
DATE: 1/27/2015
EXPIRES 11/30/15

ENGINEERING ARCHITECTURE LAND SURVEYING
809 EAST 2ND STREET, DIXON, IL 61021-0367
T: 815-284-3381 DESIGN FIRM: #184-000918

FILE: S:\Projects\1209005 - Mercer County, CH 12\Culvert Drawings\1209005Cover.dgn

| | | |
|-----------|---------------|------|
| PLAN | SKETCHED | DATE |
| NOTE BOOK | PLOTTED | BY |
| NO. | ALIGNED | |
| | FILE NAME | |
| | ADD FILE NAME | |

| | | |
|-----------|--------------------------|------|
| PROFILE | SKETCHED | DATE |
| NOTE BOOK | PLOTTED | BY |
| NO. | GRADES CHECKED | |
| | STRUCTURE NOTATIONS CHKD | |

SUMMARY OF QUANTITIES

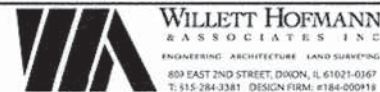
CONSTRUCTION TYPE CODE: 0011

| PAY ITEM | QUANTITY | UNIT | ITEM |
|--------------|----------|---------|--|
| 20300100 | 44 | Cu. Yd. | Channel Excavation |
| 20400800 | 260 | Cu. Yd. | Furnished Excavation |
| 25100630 | 1,845 | Sq. Yd. | Erosion Control Blanket |
| * 28000305 | 16 | Foot | Temporary Ditch Checks |
| 28000400 | 298 | Foot | Perimeter Erosion Barrier |
| * 31101000 | 122 | Ton | Subbase Granular Material, Type B |
| * 35100100 | 242 | Ton | Aggregate Base Course, Type A |
| * 40600275 | 1,308 | Pound | Bituminous Materials (Prime Coat) |
| 40603000 | 43 | Ton | Hot-Mix Asphalt Binder Course, IL-12.5, N50 |
| 40603310 | 43 | Ton | Hot-Mix Asphalt Surface Course, Mix "C", N50 |
| 50100100 | 1 | Each | Removal of Existing Structures |
| 50800205 | 21,190 | Pound | Reinforcement Bars, Epoxy Coated |
| 51500100 | 1 | Each | Name Plates |
| 54003000 | 138.0 | Cu. Yd. | Concrete Box Culverts |
| 66600105 | 8 | Each | Furnishing and Erecting Right of Way Markers |
| 66700205 | 1 | Each | Permanent Survey Markers, Type I |
| 67100100 | 1 | L. Sum | Mobilization |
| Z0013798 | 1 | L. Sum | Construction Layout |
| * X2020410 | 275 | Cu. Yd. | Earth Excavation (Special) |
| * X2070302 | 281 | Ton | Porous Granular Embankment, Special |
| * X2501000 | 0.38 | Acre | Seeding, Class 2 (Special) |
| * X2810110 | 70 | Sq. Yd. | Stone Riprap, Class A5 (Special) |
| * X6650200 | 237 | Foot | Woven Wire Fence (Special) |
| Δ * X6650202 | 336 | Foot | Woven Wire Fence Removal |
| Δ * X7010216 | 1 | L. Sum | Traffic Control and Protection, (Special) |

*See B. L. R. 11310 in the contract documents for Special Provisions.

Δ Specialty Items

FILE : S:\S\1209005 - Mercer County, CH 12-Culvert-Drawings\1209005\Sumsqr\Quantities.dgn



| | |
|---------------------------|-----------|
| DESIGNED - MICHEAL WAGNER | REVISED - |
| DRAWN - RON ALLEN | REVISED - |
| CHECKED - BRIAN CONVERSE | REVISED - |
| DATE - OCTOBER 2011 | REVISED - |

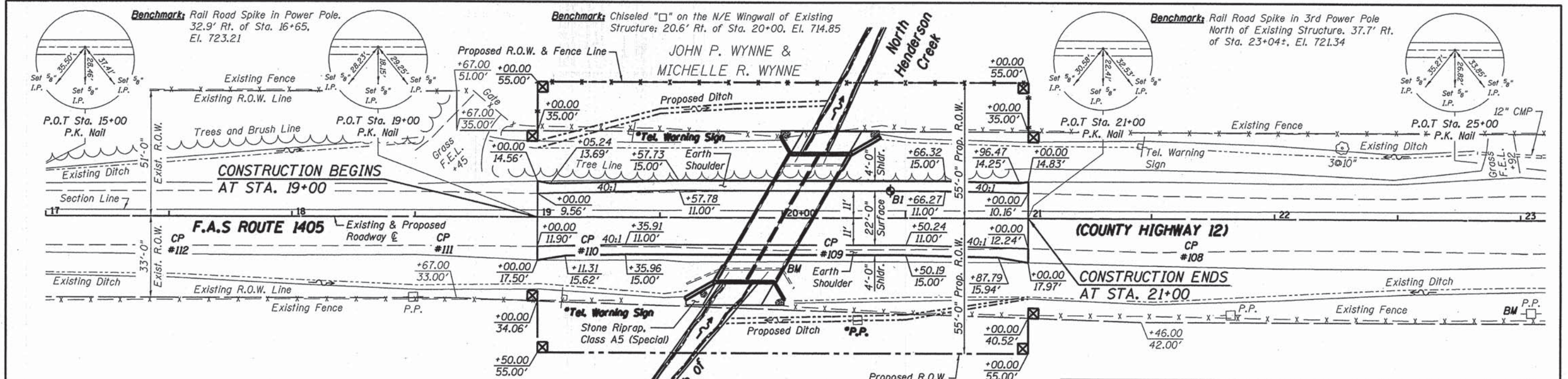
**F.A.S. ROUTE 1405 (C.H. 12) OVER
BRANCH OF NORTH HENDERSON CREEK
STATION 20 + 00**

**SUMMARY OF QUANTITIES
STRUCTURE NO. 066-3014**

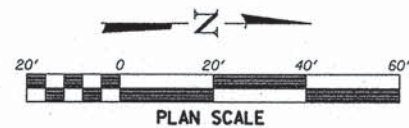
| F.A.S. RTE. | SECTION | COUNTY | TOTAL SHEETS | SHEET NO. |
|--|----------------|--------|--------------------|-----------|
| 1405 | 05-00095-00-BR | MERCER | 9 | 2 |
| WHA* 1209005 | | | CONTRACT NO. 89431 | |
| ILLINOIS FED. AID PROJECT BR05-1405(107) | | | | |

DATE: _____
 BY: _____
 SURVEYED _____
 PLOTTED _____
 CHECKED _____
 (R.T. OF WAY CHECKED)
 NOTE BOOK _____
 NO. _____
 CADD FILE NAME _____

DATE: _____
 BY: _____
 PROFILE SURVEYED _____
 PLOTTED _____
 CHECKED _____
 (S.M. NOTED)
 STRUCTURE NOTATIONS OK'D
 NOTE BOOK _____
 NO. _____



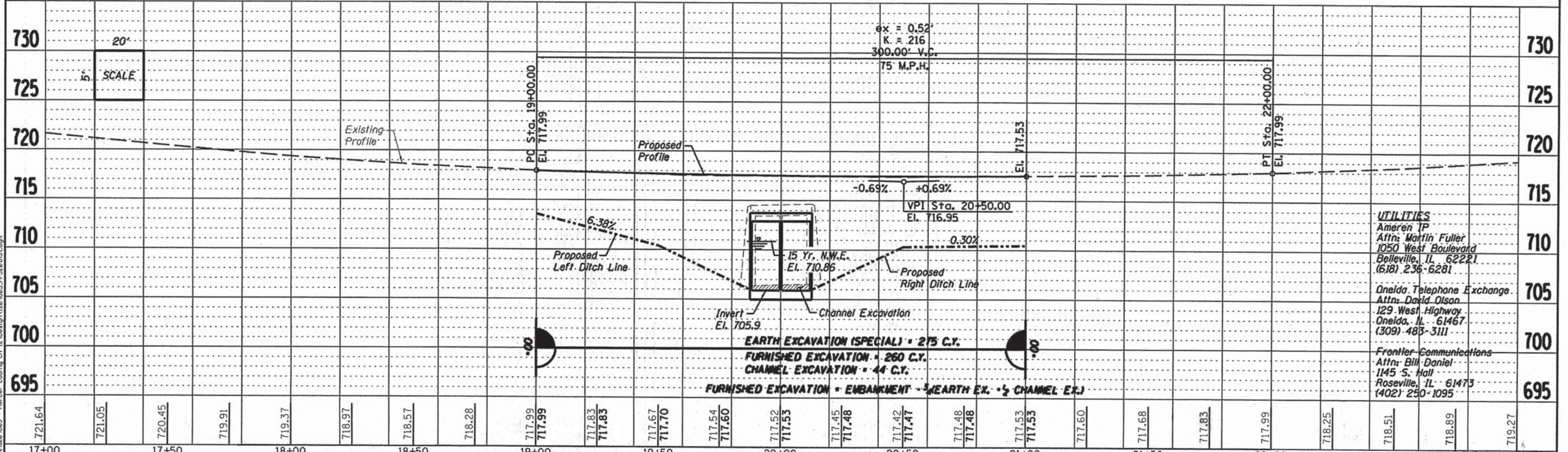
*Utilities shall be relocated by the respective Utility Companies prior to construction.



Existing Structure: S.N. 066-3012
 Double Barrel (10'x7') R.C. Box Culvert.
 Skewed 30° Lt. Ahead. To be Removed.
 No Salvage.

Proposed Structure: S.N. 066-3014
 Double Barrel (10'x7') R.C. Box Culvert.
 Skewed 30° Lt. Ahead.

| CH 12 - HORIZONTAL CONTROL POINTS | | | | | |
|-----------------------------------|------------------|------------|------------|--------|-------------|
| PT # | STA. | N | E | EL. | DESCRIPTION |
| 100 | 15.1' RT 14+55.0 | 1618907.69 | 2211234.82 | 728.18 | IP |
| 101 | 15.3' RT 24+34.1 | 1619886.69 | 2211249.87 | 722.37 | IP |
| 108 | 13.0' RT 21+66.1 | 1619618.82 | 2211243.56 | 717.34 | IP |
| 109 | 12.3' RT 20+19.8 | 1619472.50 | 2211240.62 | 716.87 | IP |
| 110 | 11.4' RT 19+20.4 | 1619373.15 | 2211238.18 | 717.21 | IP |
| 111 | 10.9' RT 18+61.6 | 1619314.30 | 2211236.82 | 717.83 | IP |
| 112 | 11.5' RT 17+53.6 | 1619206.31 | 2211235.76 | 719.88 | IP |
| 113 | 11.0' RT 16+42.8 | 1619095.60 | 2211233.55 | 722.77 | IP |



UTILITIES
 Ameren IP
 Attn: Martin Fuller
 1050 West Boulevard
 Belleville, IL 62221
 (618) 236-6281

Oneida Telephone Exchange
 Attn: David Olson
 129 West Highway
 Oneida, IL 61467
 (309) 483-3111

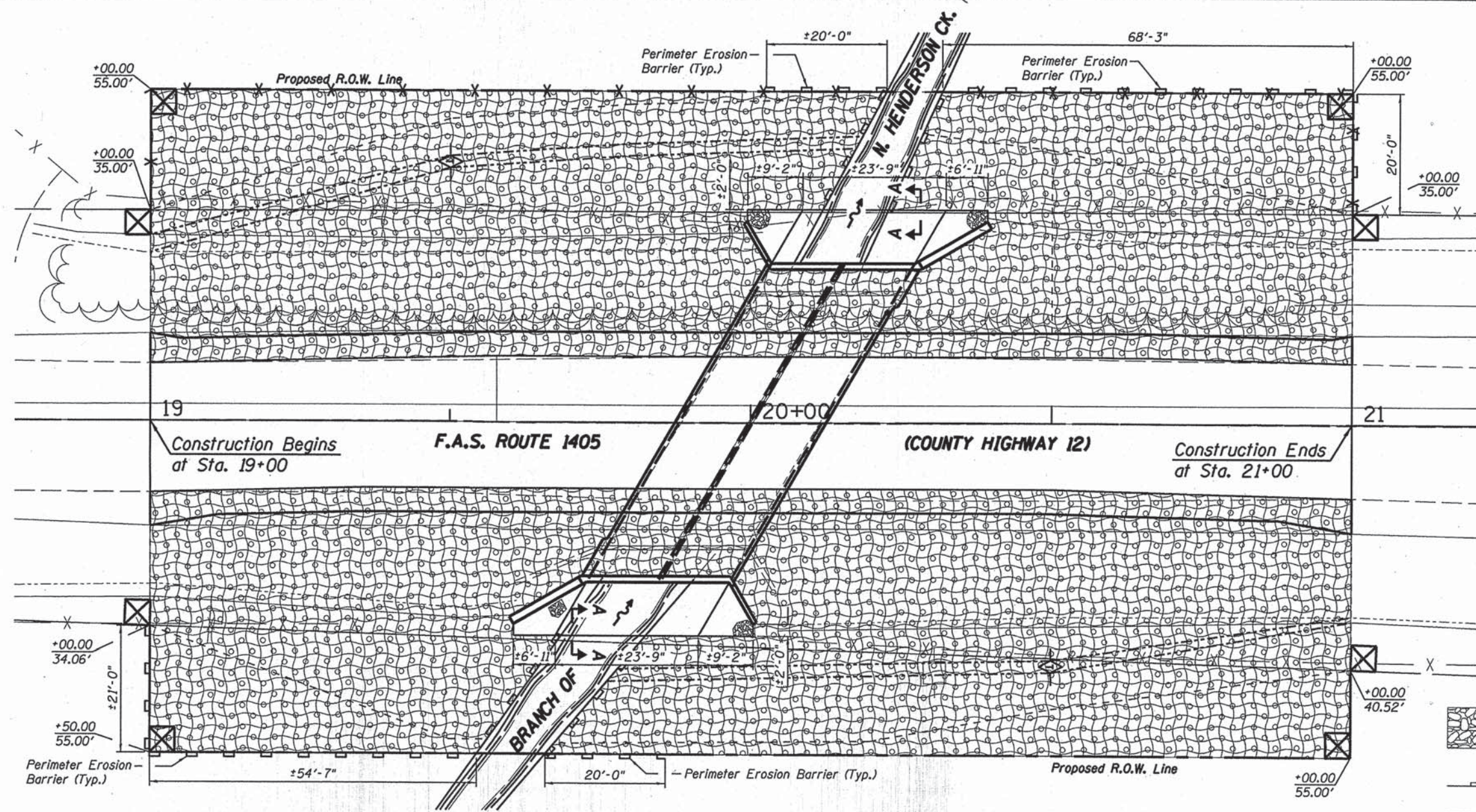
Frontier Communications
 Attn: Bill Daniel
 1145 S. Hall
 Roseville, IL 61473
 (402) 250-1095

| | | | | | | | | |
|--|---------------------------|-----------|---|--|--|-----------------------|---------------|-------------------|
| WILETT HOFMANN & ASSOCIATES INC. ENGINEERING ARCHITECTURE LAND SURVEYING 809 EAST 2ND STREET, DECATUR, IL 61731-0167 T: 815-254-3361 DESIGN FIRM #184-000118 | DESIGNED - MICHAEL WAGNER | REVISED - | F.A.S. ROUTE 1405 (C.H. 12) OVER BRANCH OF NORTH HENDERSON CREEK STATION 20+00 | PLAN AND PROFILE STRUCTURE NO. 066-3014 | F.A.S. RTE. 1405 | SECTION 05-0095-00-BR | COUNTY MERCER | TOTAL SHEET NO. 9 |
| | DRAWN - RON ALLEN | REVISED - | | | WHA # 1209005 | CONTRACT NO. 89431 | | |
| | CHECKED - BRIAN CONVERSE | REVISED - | | | ILLINOIS FED. AID PROJECT BROS-1405107 | | | |
| | DATE - OCTOBER 2011 | REVISED - | | | | | | |

SCALE: 1" = 20'-0" SHEET NO. 1 OF 1 SHEETS STA. 17+00.00 TO STA. 23+00.00

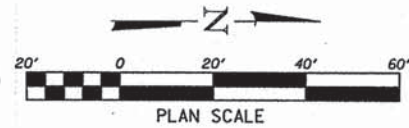
| | |
|-----------|--|
| DATE | |
| BY | |
| PLAN | |
| NOTE BOOK | |
| NO. | |
| SURVEYED | |
| ALIGNED | |
| CHECKED | |
| BY | |
| DATE | |
| BY | |
| DATE | |
| BY | |
| DATE | |
| BY | |
| DATE | |

| | |
|-----------|--|
| DATE | |
| BY | |
| PROFILE | |
| NOTE BOOK | |
| NO. | |
| SURVEYED | |
| ALIGNED | |
| CHECKED | |
| BY | |
| DATE | |
| BY | |
| DATE | |
| BY | |
| DATE | |



LEGEND

| | |
|--|----------------------------------|
| | Stone Riprap, Class A5 (Special) |
| | Perimeter Erosion Barrier |
| | Seeding, Class 2 (Special) |
| | Temporary Ditch Checks |
| | Erosion Control Blanket |



EROSION CONTROL NOTES

The soil erosion and sediment control practices will be inspected weekly and after 1/2" of rain or more by the individual on site in charge of soil erosion and sediment control during the construction of the project.

Perimeter erosion barrier shall comply with Section 280 of the Standard Specifications and shall be placed as shown on the Erosion Control Plan and in accordance with stations shown on the Schedule of Quantities sheet or as directed by the Engineer.

Silt fence shall be installed following the completion and stabilization of all areas adjacent to the on-site drainages. The silt fence will remain in place until the contributing area is stabilized.

For Seeding, Class 2 (Special), see Special Provisions.

Erosion control blanket shall be placed in ditches and to all disturbed areas as shown on this Erosion Control Plan sheet and in accordance with Section 251 of the Standard Specifications for Road and Bridge Construction.

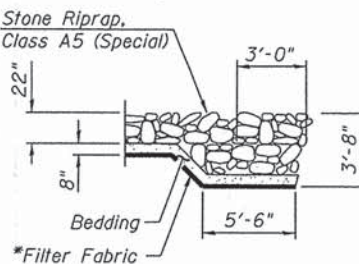
The use of green dye in the erosion control blanket is not acceptable.

Temporary ditch checks shall comply with Section 280 of the Standard Specifications for Road and Bridge Construction and Standard 280001 located in the plans.

Temporary ditch checks shall be placed at stations called out in the Schedule of Quantities or as directed by the Engineer.

Stockpiles of soil and other building materials to remain in place more than 3 days shall be furnished with erosion and sediment control measures (i.e. perimeter silt fence). Stockpiles to remain in place for 14 days or more shall receive temporary seeding.

All adjacent streets must be kept clear of debris, inspected daily and cleaned when necessary.



SECTION A-A

*Included in the cost of Stone Riprap, Class A5 (Special).

BILL OF MATERIAL

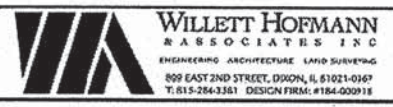
| Item | Unit | Quantity |
|----------------------------|---------|----------|
| Erosion Control Blanket | Sq. Yd. | 1,845 |
| Temporary Ditch Checks | Foot | 16 |
| Perimeter Erosion Barrier | Foot | 298 |
| Seeding, Class 2 (Special) | Acre | 0.36 |



NOTES:

Channel Excavation includes all the necessary excavation needed within the area shown above in the detail from the ground surface down to the top of the riprap. Riprap excavation is included in the Stone Riprap, Class A5 (Special) pay item.

See Sheet 6 of 9 for Stone Riprap, Class A5 (Special) quantity.



| | |
|---------------------------|-----------|
| DESIGNED - MICHAEL WAGNER | REVISED - |
| DRAWN - RON ALLEN | REVISED - |
| CHECKED - BRIAN CONVERSE | REVISED - |
| DATE - OCTOBER 2011 | REVISED - |

**F.A.S. ROUTE 1405 (C.H. 12) OVER
BRANCH OF NORTH HENDERSON CREEK
STATION 20+00**

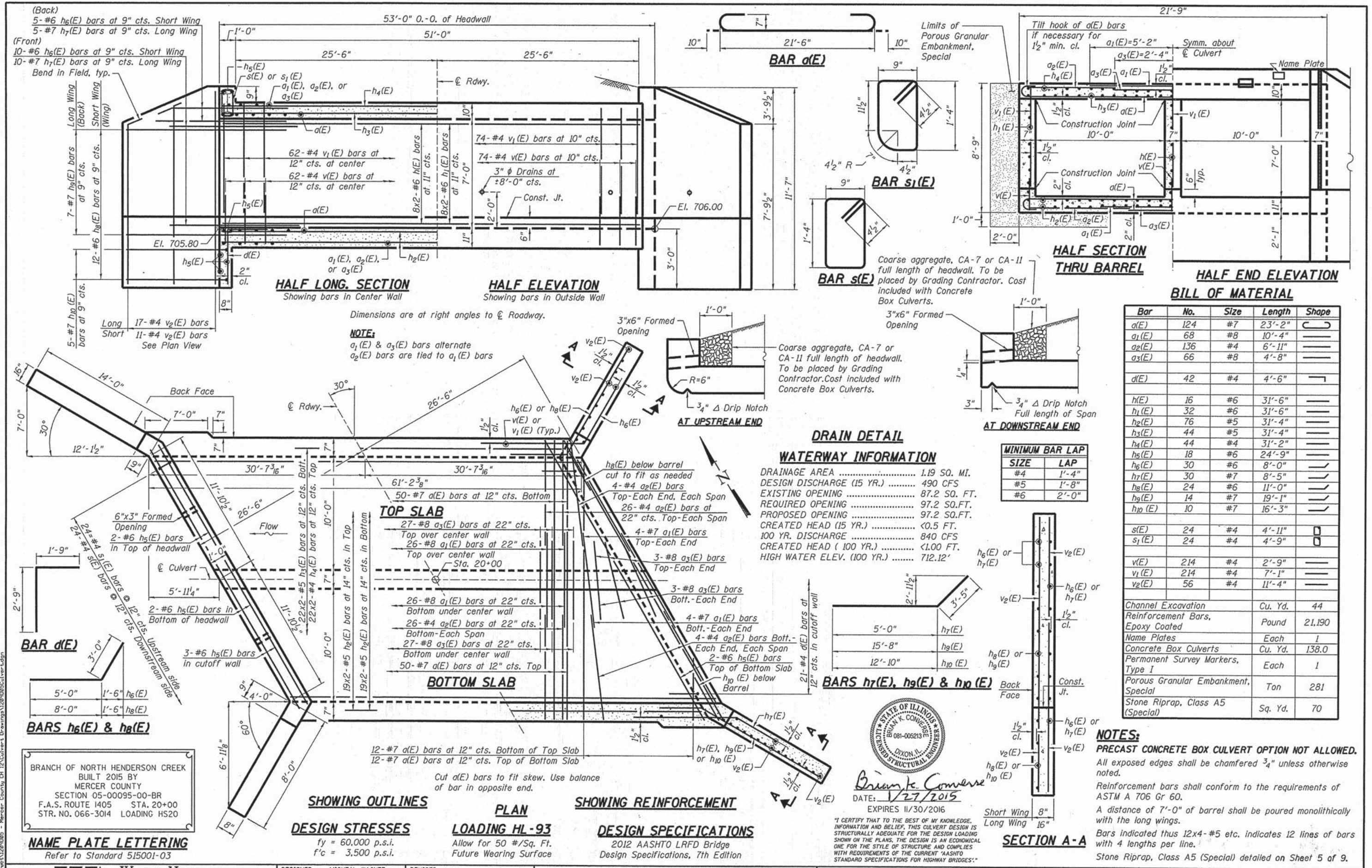
**EROSION CONTROL PLAN
STRUCTURE NO. 066-3014
STA. 19+00.00 TO STA. 21+00.00**

| F.A.S. RTE. | SECTION | COUNTY | TOTAL SHEETS | SHEET NO. |
|--|----------------|--------------------|--------------|-----------|
| 1405 | 05-00095-00-BR | MERCER | 9 | 5 |
| WHA# 1209005 | | CONTRACT NO. 89431 | | |
| ILLINOIS FED. AID PROJECT BR05-1405(107) | | | | |

FILE = S:\Struct\1209005 - Mercer County Dwg\1209005ErosionControl.dwg

| | |
|-------------|--|
| DATE | |
| BY | |
| REVISIONS | |
| NO. | |
| DESCRIPTION | |
| DATE | |
| BY | |
| REVISIONS | |
| NO. | |
| DESCRIPTION | |
| DATE | |
| BY | |
| REVISIONS | |
| NO. | |
| DESCRIPTION | |
| DATE | |
| BY | |
| REVISIONS | |
| NO. | |
| DESCRIPTION | |
| DATE | |
| BY | |
| REVISIONS | |
| NO. | |
| DESCRIPTION | |

| | |
|-------------|--|
| DATE | |
| BY | |
| REVISIONS | |
| NO. | |
| DESCRIPTION | |
| DATE | |
| BY | |
| REVISIONS | |
| NO. | |
| DESCRIPTION | |
| DATE | |
| BY | |
| REVISIONS | |
| NO. | |
| DESCRIPTION | |
| DATE | |
| BY | |
| REVISIONS | |
| NO. | |
| DESCRIPTION | |



BILL OF MATERIAL

| Bar | No. | Size | Length | Shape |
|---|-----|------|--------|-------|
| a(E) | 124 | #7 | 23'-2" | U |
| a1(E) | 68 | #8 | 10'-4" | — |
| a2(E) | 136 | #4 | 6'-11" | — |
| a3(E) | 66 | #8 | 4'-8" | — |
| d(E) | 42 | #4 | 4'-6" | L |
| h(E) | 16 | #6 | 31'-6" | — |
| h1(E) | 32 | #6 | 31'-6" | — |
| h2(E) | 76 | #5 | 31'-4" | — |
| h3(E) | 44 | #5 | 31'-4" | — |
| h4(E) | 44 | #4 | 31'-2" | — |
| h5(E) | 18 | #6 | 24'-9" | — |
| h6(E) | 30 | #6 | 8'-0" | — |
| h7(E) | 30 | #7 | 8'-5" | — |
| h8(E) | 24 | #6 | 11'-0" | — |
| h9(E) | 14 | #7 | 19'-1" | — |
| h10(E) | 10 | #7 | 16'-3" | — |
| s(E) | 24 | #4 | 4'-11" | □ |
| s1(E) | 24 | #4 | 4'-9" | □ |
| v(E) | 214 | #4 | 2'-9" | — |
| v1(E) | 214 | #4 | 7'-1" | — |
| v2(E) | 56 | #4 | 11'-4" | — |
| Channel Excavation Cu. Yd. 44 | | | | |
| Reinforcement Bars, Epoxy Coated Pound 21,190 | | | | |
| Name Plates Each 1 | | | | |
| Concrete Box Culverts Cu. Yd. 138.0 | | | | |
| Permanent Survey Markers, Type I Each 1 | | | | |
| Porous Granular Embankment, Special Ton 281 | | | | |
| Stone Riprap, Class A5 (Special) Sq. Yd. 70 | | | | |

NOTES:
PRECAST CONCRETE BOX CULVERT OPTION NOT ALLOWED.
 All exposed edges shall be chamfered 3/4" unless otherwise noted.
 Reinforcement bars shall conform to the requirements of ASTM A 706 Gr 60.
 A distance of 7'-0" of barrel shall be poured monolithically with the long wings.
 Bars indicated thus 12x4-#5 etc. indicates 12 lines of bars with 4 lengths per line.
 Stone Riprap, Class A5 (Special) detailed on Sheet 5 of 9.

STATE OF ILLINOIS
 BUREAU OF SURVEYING
 081-005213
 DIXON, ILL.
 B. K. CONVERSE
 DATE: 1/27/2015
 EXPIRES 11/30/2016

"I CERTIFY THAT TO THE BEST OF MY KNOWLEDGE, INFORMATION AND BELIEF, THIS CULVERT DESIGN IS STRUCTURALLY ADEQUATE FOR THE DESIGN LOADING SHOWN ON THE PLANS. THE DESIGN IS AN ECONOMICAL ONE FOR THE STYLE OF STRUCTURE AND COMPLIES WITH REQUIREMENTS OF THE CURRENT AASHTO STANDARD SPECIFICATIONS FOR HIGHWAY BRIDGES."

BRANCH OF NORTH HENDERSON CREEK
 BUILT 2015 BY
 MERCER COUNTY
 SECTION 05-00095-00-BR
 F.A.S. ROUTE 1405 STA. 20+00
 STR. NO. 066-3014 LOADING HS20

WILLET HOFMANN ASSOCIATES INC.
 ENGINEERING ARCHITECTURE LAND SURVEYING
 809 EAST 2ND STREET, DIXON, IL 61021-0167
 TEL: 815-284-3361 DESIGN: #126-009118

| | |
|---------------------------|-----------|
| DESIGNED - MICHAEL WAGNER | REVISED - |
| DRAWN - RON ALLEN | REVISED - |
| CHECKED - BRIAN CONVERSE | REVISED - |
| DATE - OCTOBER 2011 | REVISED - |

F.A.S. ROUTE 1405 (C.H. 12) OVER
 BRANCH OF NORTH HENDERSON CREEK
 STATION 20+00

BOX CULVERT DETAILS
 STRUCTURE NO. 066-3014
 STRUCTURAL SHEET NO. 1 OF 2 SHEETS

| | | | | |
|---|------------------------|---------------|--------------------|-------------|
| F.A.S. RTE. 1405 | SECTION 05-00095-00-BR | COUNTY MERCER | TOTAL SHEETS 9 | SHEET NO. 6 |
| WHA# 1209D05 | | | CONTRACT NO. 89431 | |
| ILLINOIS FED. AID PROJECT BR05-14051017 | | | | |

| LOG OF BORING NO. 1 | | | | | | | | | | Page 1 of 1 | |
|---|-------------|-------------|---------|------|---------------------------|------------------------|-------------|--------------------|-------------------------------|-------------|--|
| OWNER | | | | | ARCHITECT/ENGINEER | | | | | | |
| SITE | | | | | PROJECT | | | | | | |
| County Highway 12 (320th Street) Mercer County, Illinois | | | | | Mercer County Box Culvert | | | | | | |
| GRAPHIC LOG | DEPTH (ft.) | USCS SYMBOL | SAMPLES | | | TESTS | | | | | |
| | | | NUMBER | TYPE | RECOVERY | SPT - N BLOWS / FT. | MOISTURE, % | DRY DENSITY PCF | UNCONFINED STRENGTH PSF | | |
| DESCRIPTION | | | | | | | | | | | |
| Approx. Surface Elev.: 717.1 ft. | | | | | | | | | | | |
| | 0.3 | | | | | | | | | | |
| | 1.0 | | | | | | | | | | |
| | 5 | CL | 1 | ST | 15" | | 26.7 | | 4000* | | |
| | 9.0 | | | | | | | | | | |
| | 10 | CL-CH | 2 | ST | 11" | | 34.4 | 82 | 4000* | | |
| | 14.0 | | | | | | | | | | |
| | 15 | CL | 3 | ST | 16" | | 26.2 | 97 | 2000 2000* | | |
| | 19.0 | | | | | | | | | | |
| | 20 | SC | 4 | ST | 3" | | 19.7 | | | | |
| | 21.0 | | | | | | | | | | |
| | 25 | SP | 5 | SS | 12" | 10 | 14.0 | | | | |
| | 27.0 | | | | | | | | | | |
| | 30 | SP | 6 | SS | 14" | 32 | 12.8 | | | | |
| | 30.5 | | | | | | | | | | |
| Bottom of Boring | | | | | | | | | | | |

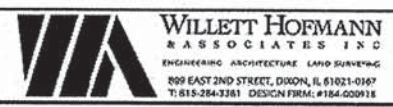
THE STRATIFICATION LINES REPRESENT THE APPROXIMATE BOUNDARY LINES BETWEEN SOIL AND ROCK TYPES: IN-SITU, THE TRANSITION MAY BE GRADUAL. Calibrated Hand Penetrometer*

| | | | | | | | | | |
|--------------------------|-----|----|-----|------------------|---------|---------|-------|---------|--|
| WATER LEVEL OBSERVATIONS | | | | BORING STARTED | | | | 5-20-06 | |
| WL | 19' | WD | 19' | BORING COMPLETED | | | | 5-20-06 | |
| WL | | | | RIG | Rig 112 | FOREMAN | GS | | |
| WL | | | | APPROVED | SMB | JOB # | 15-96 | | |

| | | |
|------|----------|------|
| PLAN | SURVEYED | DATE |
| | PLOTTED | |
| | CHECKED | |
| | BY | |
| | DATE | |

| | | |
|---------|----------|------|
| PROFILE | SURVEYED | DATE |
| | PLOTTED | |
| | CHECKED | |
| | BY | |
| | DATE | |

FILE: S:\Struct\1206085 - Mercer County CH 12\Culvert Drawings\1206085Borings.dgn



| | |
|---------------------------|-----------|
| DESIGNED - MICHAEL WAGNER | REVISED - |
| DRAWN - RON ALLEN | REVISED - |
| CHECKED - BRIAN CONVERSE | REVISED - |
| DATE - OCTOBER 2011 | REVISED - |

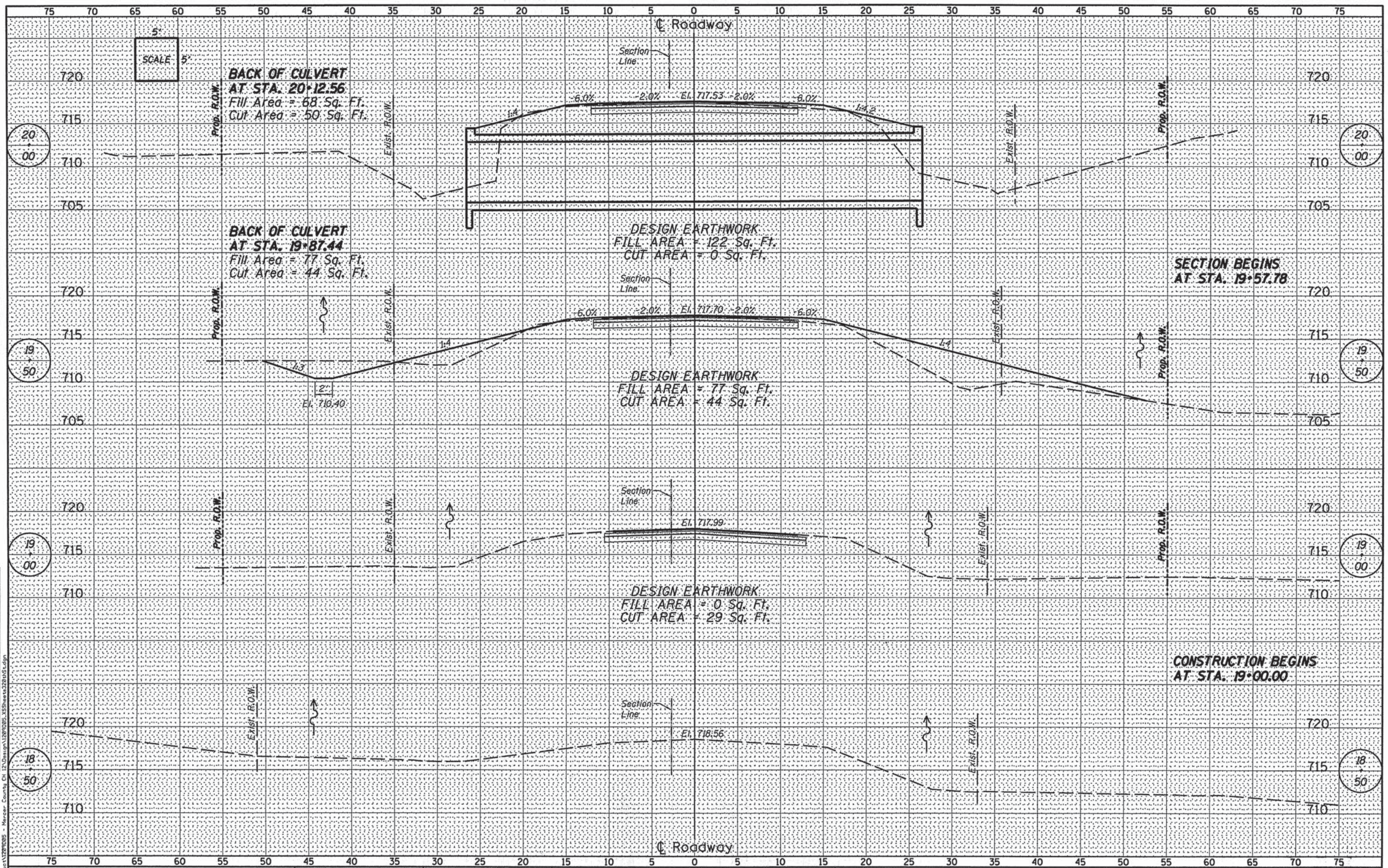
F.A.S. ROUTE 1405 (C.H. 12) OVER
BRANCH OF NORTH HENDERSON CREEK
STATION 20 + 00

BORING LOGS
STRUCTURE NO. 066-3014
STRUCTURAL SHEET NO. 2 OF 2 SHEETS

| F.A.S. RTE. | SECTION | COUNTY | TOTAL SHEETS | SHEET NO. |
|--|----------------|--------|--------------------|-----------|
| 1405 | 05-00095-00-BR | MERCER | 9 | 7 |
| WHA# 1209005 | | | CONTRACT NO. 89431 | |
| ILLINOIS FED. AID PROJECT BROS-1405107 | | | | |

| | |
|------------------|--|
| DATE | |
| BY | |
| FINAL SURVEY | |
| SELECTED PLOTTED | |
| NOTE BOOK | |
| TEMPLATE | |
| AREAS | |
| AREAS CHECKED | |

| | |
|------------------|--|
| DATE | |
| BY | |
| ORIGINAL SURVEY | |
| SELECTED PLOTTED | |
| NOTE BOOK | |
| TEMPLATE | |
| AREAS | |
| AREAS CHECKED | |



FILE # S:\15-000\1209005 - Mercer County, Ct 12\Substation\1209005-XS\Sheet\20+12.56.dwg



| | | | |
|------------|----------------|-----------|--|
| DESIGNED - | MICHAEL WAGNER | REVISED - | |
| DRAWN - | RON ALLEN | REVISED - | |
| CHECKED - | BRIAN CONVERSE | REVISED - | |
| DATE - | OCTOBER 2011 | REVISED - | |

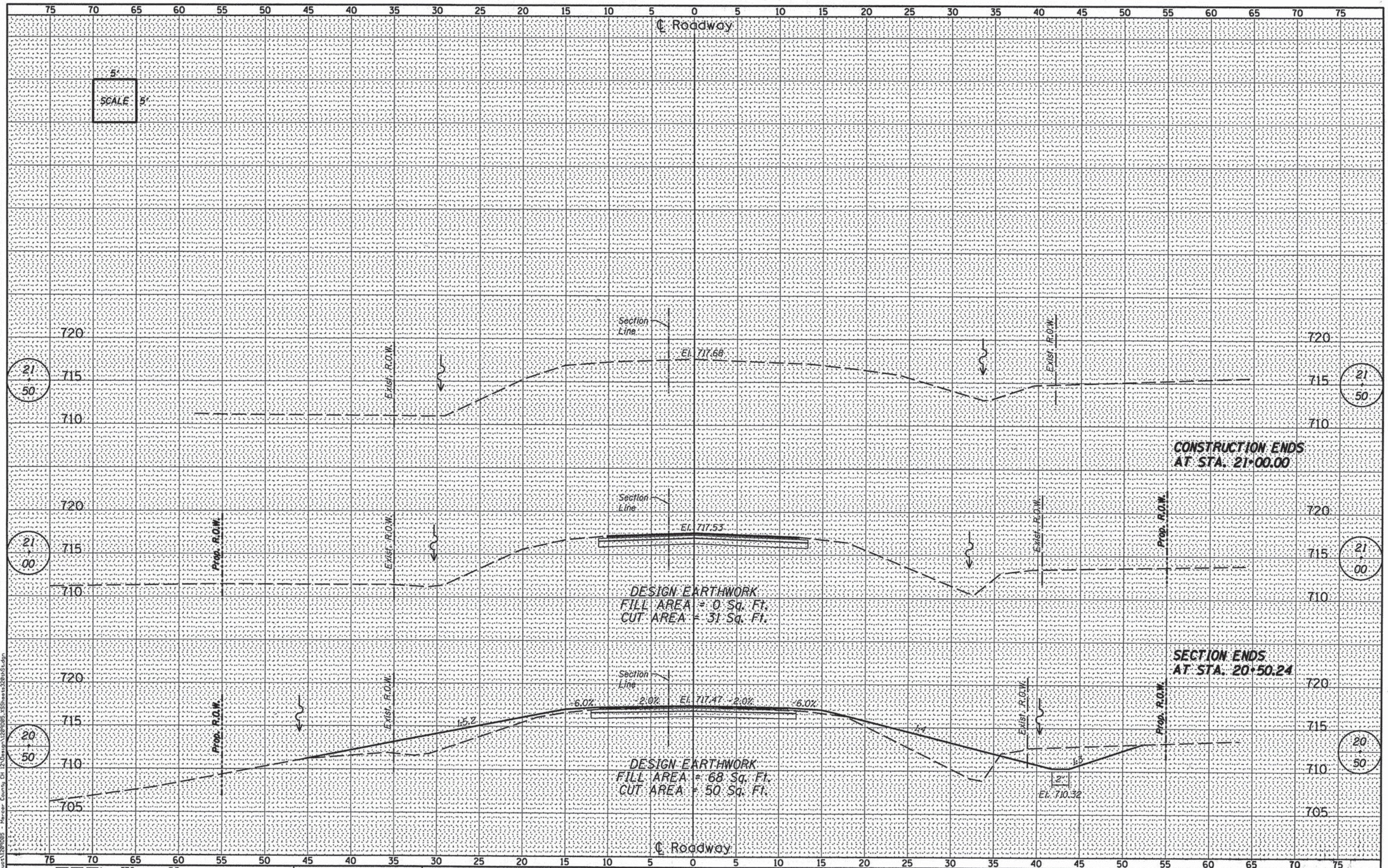
F.A.S. ROUTE 1405 (C.H. 12) OVER
BRANCH OF NORTH HENDERSON CREEK
STATION 20 + 00

CROSS SECTIONS
STRUCTURE NO. 066-3014
SCALE: 1" = 5'-0" SHEET NO. 1 OF 2 SHEETS STA. 18+50.00 TO STA. 20+00.00

| F.A.S. RTE. | SECTION | COUNTY | TOTAL SHEETS | SHEET NO. |
|--|----------------|--------------------|--------------|-----------|
| 1405 | 05-00095-00-BR | MERCER | 9 | 8 |
| WHA* 1209005 | | CONTRACT NO. 89431 | | |
| ILLINOIS FED. AID PROJECT BR05-1405107 | | | | |

DATE: _____ BY: _____
 SURVEYED _____
 PLOTTED _____
 TEMPLATE _____
 NOTE BOOK _____
 AREAS CHECKED _____
 NO. _____

DATE: _____ BY: _____
 ORIGINAL SURVEY _____
 SURVEYED _____
 PLOTTED _____
 TEMPLATE _____
 NOTE BOOK _____
 AREAS CHECKED _____
 NO. _____



WILLET HOFMANN ASSOCIATES INC.
 ENGINEERING ARCHITECTURE LAND SURVEYING
 809 EAST 2ND STREET, OMAHA, IL 61021-0367
 T: 515-294-3391 DESIGN PRIME #184-009116

| | |
|---------------------------|-----------|
| DESIGNED - MICHAEL WAGNER | REVISED - |
| DRAWN - RON ALLEN | REVISED - |
| CHECKED - BRIAN CONVERSE | REVISED - |
| DATE - OCTOBER 2011 | REVISED - |

F.A.S. ROUTE 1405 (C.H. 12) OVER BRANCH OF NORTH HENDERSON CREEK
 STATION 20+00

CROSS SECTIONS
 STRUCTURE NO. 066-3014
 SCALE: 1" = 5'-0" SHEET NO. 2 OF 2 SHEETS STA. 20+50.00 TO STA. 21+50.00

| F.A.S. RTE. | SECTION | COUNTY | TOTAL SHEETS | SHEET NO. |
|--|----------------|--------|--------------------|-----------|
| 1405 | 05-00095-00-BR | MERCER | 9 | 9 |
| WHA* 1209005 | | | CONTRACT NO. 89431 | |
| ILLINOIS FED. AID PROJECT BR05-1405107 | | | | |