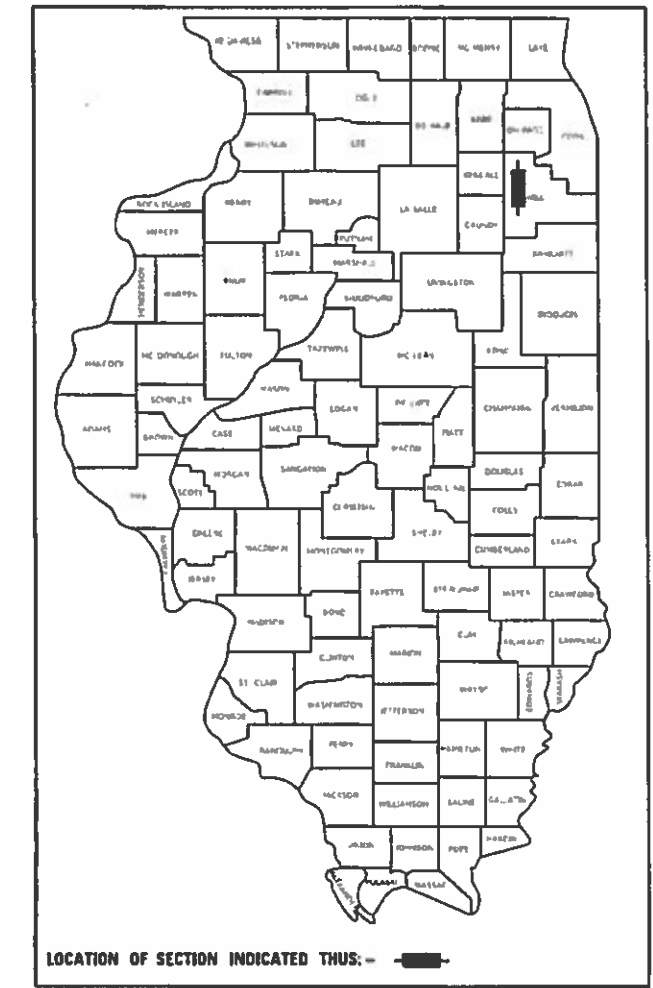


022

STATE OF ILLINOIS
DEPARTMENT OF TRANSPORTATION

F.A.J. RTE.	SECTION	COUNTY	TOTAL SHEETS	SHEET NO.
I-55	2019-181-PP	WILL	26	1
		ILLINOIS	CONTRACT NO. 62K54	

D-91-348-20



LOCATION OF SECTION INDICATED THUS: [Symbol]

FOR INDEX OF SHEETS, SEE SHEET NO. 2

THIS PROJECT IS LOCATED IN THE CITY OF JOLIET AND THE VILLAGES OF BOLINGBROOK, ROMEOVILLE, AND SHOREWOOD

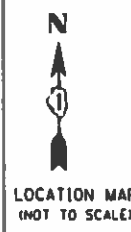
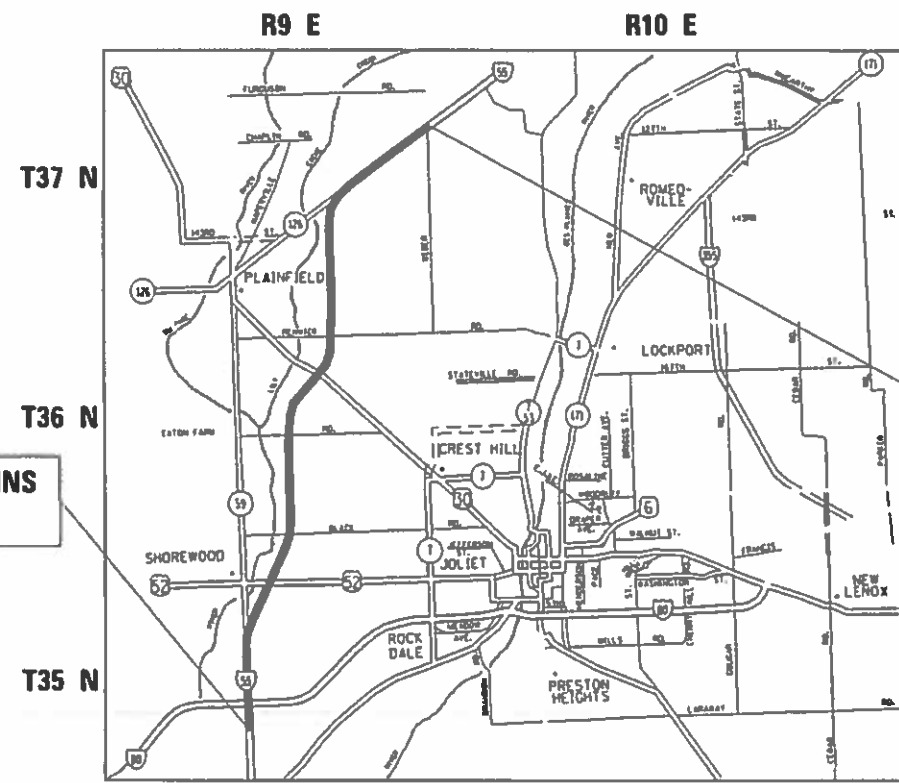
**PROPOSED
HIGHWAY PLANS**
ROUTE FAI 55: I-55 (BARACK OBAMA PRESIDENTIAL EXPY)
SOUTH OF I-80 TO SOUTH OF WEBER ROAD
SECTION: 2019-181-PP

TRAFFIC DATA:

- PROJECT BEGINS TO JEFFERSON ST.
ADT (2018) = 87,100
SPEED LIMIT = 60 MPH
- LINCOLN HWY TO 135TH ST.
ADT (2018) = 95,000
SPEED LIMIT = 60 MPH
- 135TH ST TO PROJECT ENDS
ADT (2018) = 119,500
SPEED LIMIT = 60 MPH

**PATCHING
WILL COUNTY**

C-91-156-20



LOCATION MAP (NOT TO SCALE)

IMPROVEMENT BEGINS
STA. 19+00

IMPROVEMENT ENDS
STA. 736+40

TROY, PLAINFIELD, WHEATLAND,
DUPAGE TOWNSHIPS

GROSS & NET LENGTH = 71,808 FT. = 13.6 MILES



FULL SIZE PLANS HAVE BEEN PREPARED USING STANDARD ENGINEERING SCALES. REDUCED SIZED PLANS WILL NOT CONFORM TO STANDARD SCALES. IN MAKING MEASUREMENTS ON REDUCED PLANS, THE ABOVE SCALES MAY BE USED.

J.U.L.I.E.
JOINT UTILITY LOCATION INFORMATION FOR EXCAVATORS
1-800-892-0123
OR 811

PROJECT ENGINEER: VESELIN VELICHKOV (847) 705-4432
PROJECT MANAGER: FAWAD AQUEEL (847) 705-4247

CONTRACT NO. 62K54

STATE OF ILLINOIS
DEPARTMENT OF TRANSPORTATION

SUBMITTED January 27, 2020
Anthony J. Quigley, P.E. REGIONAL ENGINEER
March 20, 2020
[Signature] ENGINEER OF DESIGN AND ENVIRONMENT
March 20, 2020
[Signature] DIRECTOR OF HIGHWAYS PROJECT IMPLEMENTATION

PRINTED BY THE AUTHORITY
OF THE STATE OF ILLINOIS

INDEX OF SHEETS

STATE STANDARDS

GENERAL NOTES

SHEET NO.	DESCRIPTION	STANDARD NO.	DESCRIPTION
1	COVER SHEET		
2	INDEX OF SHEETS, STATE STANDARDS & GENERAL NOTES	000001-07	STANDARD SYMBOLS, ABBREVIATIONS AND PATTERNS
3	SUMMARY OF QUANTITIES	642001-02	SHOULDER RUMBLE STRIPS, 16 IN.
4	TYPICAL SECTIONS	701001-02	OFF-RD OPERATIONS, 2L, 2W, MORE THAN 15' (4.5 m) AWAY
5-10	SCHEDULE OF QUANTITIES	701101-05	OFF-RD OPERATIONS, MULTILANE, 15' (4.5 m) TO 24" (600 mm) FROM PAVEMENT EDGE
11-19	TRAFFIC SYSTEM STANDARDS	701400-09	APPROACH TO LANE CLOSURE, FREEWAY / EXPRESSWAY
20	TC-08 ENTRANCE AND EXIT RAMP CLOSURE DETAILS	701401-12	LANE CLOSURE, FREEWAY / EXPRESSWAY
21	TC-09 TRAFFIC CONTROL DETAILS FOR FREEWAY SINGLE & MULTI-LANE WEAVE	701411-09	MULTILANE, TRAFFIC CONTROL AT ENTRANCE OR EXIT RAMP, FOR SPEEDS ≥ 45 MPH
22-23	TC-12: MULTI-LANE FREEWAY PAVEMENT MARKING DETAILS	701428-01	TRAFFIC CONTROL, SETUP AND REMOVAL, FREEWAY / EXPRESSWAY
24	TC-17: TRAFFIC CONTROL FOR SHOULDER CLOSURES AND PARTIAL RAMP CLOSURES	701446-10	TWO LANE CLOSURE, FREEWAY / EXPRESSWAY
25	TC-18: SIGNING FOR FLAGGING OPERATIONS AT WORK ZONE OPENINGS	701901-08	TRAFFIC CONTROL DEVICES
26	TC-22: ARTERIAL ROAD INFORMATION SIGN	780001-05	TYPICAL PAVEMENT MARKINGS

- BEFORE STARTING ANY EXCAVATION, THE CONTRACTOR SHALL CALL "JULIE" AT (800) 892-0123 OR 811 FOR FIELD LOCATIONS OF BURIED ELECTRIC, TELEPHONE, AND GAS FACILITIES. (48 HOUR NOTIFICATION REQUIRED)
- THE CONTRACTOR SHALL COORDINATE CONSTRUCTION ACTIVITIES WITH UTILITY COMPANIES, THE CITY OF JOLIET, AND THE VILLAGES OF BOLINGBROOK, ROMEVILLE, AND SHOREWOOD.
- THE CONTRACTOR SHALL CONTACT THE DISTRICT ONE EXPRESSWAY TRAFFIC CONTROL SUPERVISOR AT (847) 705-4155 A MINIMUM OF 72 HOURS IN ADVANCE OF BEGINNING WORK.
- THE RESIDENT ENGINEER SHALL CONTACT REGINA COOPER, AREA EXPRESSWAY TRAFFIC ENGINEER, VIA E-MAIL AT REGINA.COOPER@ILLINOIS.GOV, A MINIMUM OF 2 WEEKS PRIOR TO PLACEMENT OF PERMANENT PAVEMENT MARKINGS.
- BEFORE BEGINNING ANY WORK, THE CONTRACTOR SHALL RETAIN AND RECORD FOR FUTURE REFERENCE, ALL EXISTING PAVEMENT MARKING LINES (AND RAISED REFLECTIVE PAVEMENT MARKERS) IN ORDER THAT THESE LOCATIONS CAN BE RE-ESTABLISHED FOR STRIPING. EXACT LOCATIONS OF ALL PAVEMENT MARKINGS SHALL BE AS DIRECTED BY THE RESIDENT ENGINEER.
- ALL DAMAGE TO EXISTING PAVEMENT MARKINGS OR RAISED REFLECTIVE PAVEMENT MARKERS OUTSIDE THE REMOVAL LINE SHOWN ON THE PLANS SHALL BE REPLACED AT NO ADDITIONAL COST TO THE DEPARTMENT.
- THE CONTRACTOR SHALL REQUEST AND GAIN APPROVAL FROM THE ILLINOIS DEPARTMENT OF TRANSPORTATION'S EXPRESSWAY TRAFFIC OPERATION ENGINEER AT www.idotilcs.com TWENTY-FOUR (24) HOURS IN ADVANCE OF ALL DAILY LANE, RAMP, AND SHOULDER CLOSURES AND 7 DAYS IN ADVANCE OF ALL PERMANENT AND WEEKEND CLOSURES ON ALL FREEWAYS AND/OR EXPRESSWAYS IN DISTRICT ONE. THIS ADVANCE NOTIFICATION IS CALCULATED BASED ON A WORK WEEK OF MONDAY THROUGH FRIDAY, AND SHALL NOT INCLUDE WEEKENDS OR HOLIDAYS.
- IT IS ANTICIPATED THAT THIS CONTRACT WILL BE CONSTRUCTED WITH OTHER ROADWAY PROJECTS IN THE SAME AREA. THE CONTRACTOR SHALL SCHEDULE HIS WORK IN ORDER TO MINIMIZE ANY CONFLICTS THAT MAY ARISE BETWEEN CONTRACTS AS SPECIFIED IN ARTICLE 105.08 OF THE STANDARD SPECIFICATIONS. NO ADDITIONAL COMPENSATION WILL BE ALLOWED FOR DELAYS OR INCONVENIENCES RESULTING FROM ACTIVITIES OF OTHER CONTRACTORS.
- FULL DEPTH PATCHING WILL BE PERFORMED BEFORE LANE PATCHING AND LONGITUDINAL PARTIAL DEPTH PATCHING.
- LANE PATCHING, LONGITUDINAL PARTIAL DEPTH, AND FULL DEPTH PATCHING WILL BE LAID OUT IN THE FIELD BY THE RESIDENT ENGINEER.
- LIMIT OF IMPROVEMENT AT RAMPS IS TO THE TIP OF THE GORE.
- DO NOT SCALE PLANS FOR CONSTRUCTION DIMENSIONS.

HOT-MIX ASPHALT MIXTURE REQUIREMENTS		
MIXTURE TYPE	AIR VOIDS @ Ndes	QUALITY MANAGEMENT PROGRAM (QMP)
INTERMITTENT RESURFACING (LANE PATCHING)		
HOT-MIX ASPHALT SURFACE COURSE, IL-9.5, MIX "D" N70, 2"	4.0% AT 70 GYR	QC/QA
PATCHING		
CLASS D PATCHES (HOT-MIX ASPHALT BINDER IL-19.0)	4.0% AT 70 GYR	QC/QA
LONGITUDINAL PARTIAL DEPTH PATCHING		
HOT-MIX ASPHALT SURFACE COURSE, IL-9.5, MIX "D" N70, 2"	4.0% AT 70 GYR	QC/QA
QMP DESIGNATION: QUALITY CONTROL/QUALITY ASSURANCE (QC/QA); QUALITY CONTROL FOR PERFORMANCE (QCP)		

- NOTE 1: THE UNIT WEIGHT USED TO CALCULATE ALL HMA SURFACE MIXTURE QUANTITIES IS 112 LBS/SQ YD/IN.
- NOTE 2: THE "AC TYPE" FOR POLYMERIZED HMA MIXES SHALL BE "SBS/SBR PG 76-22" AND FOR NON-POLYMERIZED HMA THE "AC TYPE" SHALL BE "PG 64-22" UNLESS MODIFIED BY DISTRICT ONE SPECIAL PROVISIONS. FOR USE OF RECYCLED MATERIALS SEE SPECIAL PROVISIONS.
- NOTE 3: QUALITY MANAGEMENT PROGRAM (QMP) IDENTIFIES THE PARTICULAR QUALITY CONTROL SPECIFICATION THAT APPLIES TO THE HMA MIXTURE.

STATE OF ILLINOIS
DEPARTMENT OF TRANSPORTATION

INDEX OF SHEETS, STATE STANDARDS & GENERAL NOTES
I-55 (BARACK OBAMA PRESIDENTIAL EXPY) (I-80 TO SOUTH WEBER RD.)

F.A.I. RTE.	SECTION	COUNTY	TOTAL SHEETS	SHEET NO.
55	2019-181-PP	WILL	26	2
				CONTRACT NO. 62K54
SCALE:		SHEET OF SHEETS	STA. TO STA.	ILLINOIS FED. AID PROJECT

MODEL: Default
 FILE: \\blm1c:\pub\blmroom\data\illinois.gov\PIWDOT\Documents\DOT_Offices\District_1\Projects\ID134820\CADDData\Design\ID134820_sht-generatc.dgn

SUMMARY OF QUANTITIES				CONSTRUCTION TYPE CODE					SUMMARY OF QUANTITIES				CONSTRUCTION TYPE CODE						
CODE NO	ITEM	UNIT	TOTAL QUANTITIES	0005 100% STATE						CODE NO	ITEM	UNIT	TOTAL QUANTITIES	0005 100% STATE					
40600290	BITUMINOUS MATERIALS (TACK COAT)	POUND	1830	1830						* 78009005	MODIFIED URETHANE PAVEMENT MARKING - LINE 5"	FOOT	71880	71880					
40604062	HOT-MIX ASPHALT SURFACE COURSE, IL-9.5, MIX "D", N70	TON	4100	4100						* 78009008	MODIFIED URETHANE PAVEMENT MARKING - LINE 8"	FOOT	1000	1000					
44000157	HOT-MIX ASPHALT SURFACE REMOVAL, 2"	SO YD	36600	36600						* 78100100	RAISED REFLECTIVE PAVEMENT MARKER	EACH	360	360					
44201839	CLASS D PATCHES, TYPE II, 16 INCH	SO YD	1430	1430						78300200	RAISED REFLECTIVE PAVEMENT MARKER REMOVAL	EACH	360	360					
44201843	CLASS D PATCHES, TYPE III, 16 INCH	SO YD	770	770															
64200116	SHOULDER RUMBLE STRIPS, 16 INCH	FOOT	18160	18160						* X1400337	WIRELESS IN PAVEMENT DETECTOR	EACH	5	5					
67000400	ENGINEER'S FIELD OFFICE, TYPE A	CAL MO	6	6						X4405020	LONGITUDINAL PARTIAL DEPTH REMOVAL 2"	FOOT	43100	43100					
67100100	MOBILIZATION	L SUM	1	1						X4420900	LONGITUDINAL PARTIAL DEPTH PATCHING	TON	4100	4100					
70107025	CHANGEABLE MESSAGE SIGN	CAL DA	180	180						* X7011015	TRAFFIC CONTROL AND PROTECTION (EXPRESSWAYS)	L SUM	1	1					
70200100	NIGHTTIME WORK ZONE LIGHTING	L SUM	1	1						* X7030005	TEMPORARY PAVEMENT MARKING REMOVAL	SO FT	36370	36370					
70300904	PAVEMENT MARKING TAPE, TYPE IV 4"	FOOT	17240	17240						* X8730312	ELECTRIC CABLE IN CONDUIT, LEAD-IN, NO. 18 4/C, TWISTED, SHIELDED	FOOT	50	50					
70300905	PAVEMENT MARKING TAPE, TYPE IV 5"	FOOT	71880	71880						* X8850102	INDUCTION LOOP	FOOT	175	175					
70300908	PAVEMENT MARKING TAPE, TYPE IV 8"	FOOT	1000	1000						Z0030850	TEMPORARY INFORMATION SIGNING	SO FT	160	160					
* 78009004	MODIFIED URETHANE PAVEMENT MARKING - LINE 4"	FOOT	17240	17240						Ø Z0076604	TRAINEES TRAINING PROGRAM GRADUATE	HOUR	500	500					

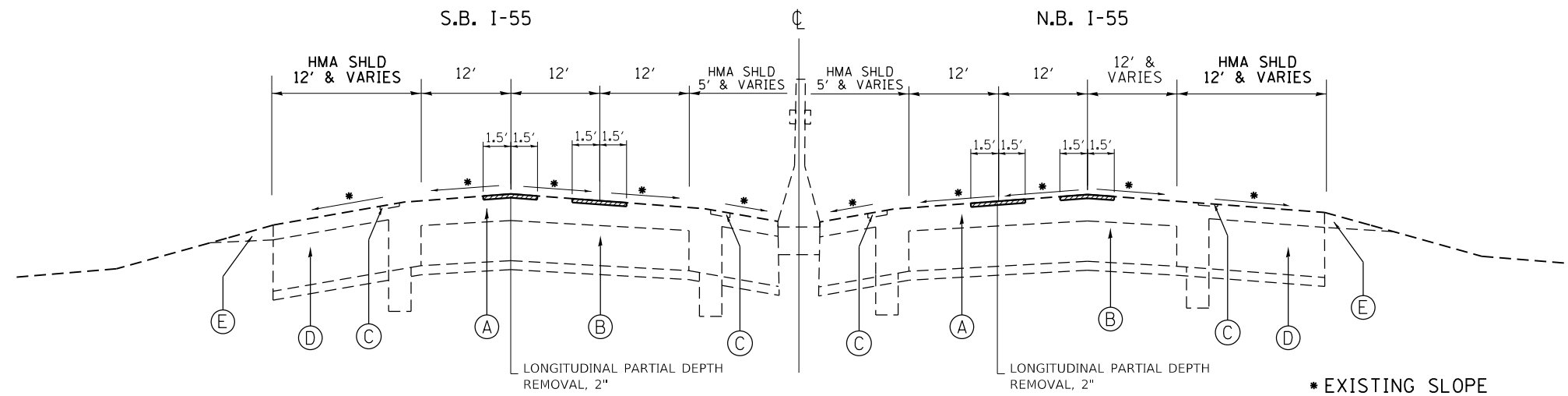
* = SPECIALTY ITEMS
Ø 0042

FILE NAME =	USER NAME = qqrutmm	DESIGNED -	REVISED -
p:\planroom\dtd\illinois\gov\PI\DOT\Documents\VDOT	Offices\District 1\Projects\DI34820\CADD\Design\DI34820-4	DRAWN -	REVISED -
	PLOT SCALE = 100,0000' / 1in.	CHECKED -	REVISED -
	PLOT DATE = 2/7/2020	DATE -	REVISED -

STATE OF ILLINOIS
DEPARTMENT OF TRANSPORTATION

SUMMARY OF QUANTITIES			
I-55 (BARACK OBAMA PRESIDENTIAL EXPY) (I-80 TO SOUTH WEBER RD.)			
SCALE:	SHEET NO.	OF SHEETS	STA. TO STA.

F.A.I. RTE.	SECTION	COUNTY	TOTAL SHEETS	SHEET NO.
I-55	2019-181-PP	WILL	26	3
FED. ROAD DIST. NO. 1 ILLINOIS FED. AID PROJECT			CONTRACT NO. 62K54	



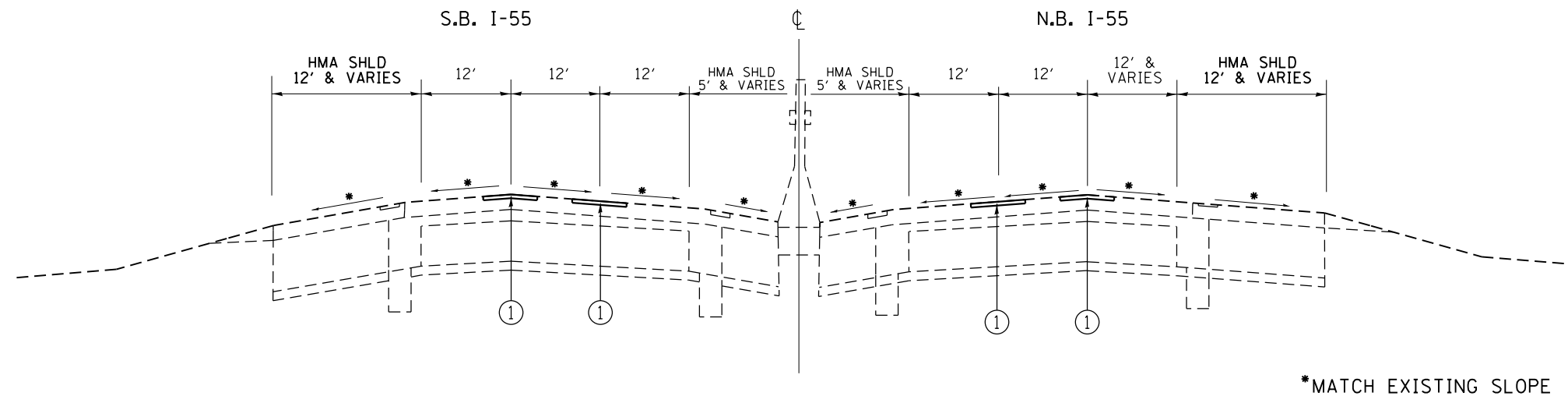
INTERSTATE I-55
EXISTING TYPICAL SECTION
STA. 19+00 TO STA. 713+92.9

LEGEND - EXISTING:

- (A) HOT-MIX ASPHALT PAVEMENT
- (B) PORTLAND CEMENT CONCRETE PAVEMENT
- (C) SHOULDER RUMBLE STRIPS, 16 INCH
- (D) HOT-MIX ASPHALT SHOULDER
- (E) AGGREGATE WEDGE SHOULDER, TYPE B

NOTES:

- 1.) LOCATIONS OF PATCHING WILL BE DETERMINED IN THE FIELD BY THE RESIDENT ENGINEER.
- 2.) THE PATCH WIDTH SHALL BE 3 FT, THE LENGTH SHALL BE A MINIMUM OF 10 FT, AND THE DEPTH SHALL BE AS SHOWN ON THE PLANS.



INTERSTATE I-55
PROPOSED TYPICAL SECTION
STA. 19+00 TO STA. 713+92.9

LEGEND - PROPOSED

- (1) LONGITUDINAL PARTIAL DEPTH PATCHING, 2"

FILE NAME =	USER NAME = qarutnm	DESIGNED -	REVISED -	STATE OF ILLINOIS DEPARTMENT OF TRANSPORTATION	TYPICAL SECTIONS				F.A.I. RTE.	SECTION	COUNTY	TOTAL SHEETS	SHEET NO.	
p:\planroom\dot.illinois.gov\PIDOT\Documents\IDOT Offices\District 1\Projects\DI34820\Drawings\Design\DI34820-sht-typical.dgn					REVISED -	I-55 (BARACK OBAMA PRESIDENTIAL EXPY) (I-80 TO SOUTH WEBER RD.)				I-55	2019-181-PP	WILL	26	4
PLOT SCALE = 100.0000' / in.					CHECKED -	SCALE: SHEET NO. OF SHEETS STA. TO STA.				CONTRACT NO. 62K54				
PLOT DATE = 2/7/2020					DATE -					ILLINOIS FED. AID PROJECT				

NORTHBOUND JOINT PATCHING

Specific Location		Lane No. (1,2,3)	Pavement Patch Width (Feet)	Pavement Patch Length (Feet)	Repair Area (Sq.Ft.)	Repair Area (Sq.Yd)
From	To					
US 52	Black Rd	1 & 2*	3	15	45	5
"	"	3*	3	15	45	5
"	"	1*	3	10	30	3
"	"	3*	3	30	90	10
"	"	2* & 3*	3	10	30	3
"	"	2* & 3*	3	10	30	3
"	"	2* & 3*	3	10	30	3
"	"	3*	3	45	135	15
Totals:					435	48

Specific Location		Lane No. (1,2,3)	Pavement Patch Width (Feet)	Pavement Patch Length (Feet)	Repair Area (Sq.Ft.)	Repair Area (Sq.Yd)
From	To					
Black Rd	Caton Farm	2 & 3*	3	10	30	3
"	"	2	3	10	30	3
"	"	2	3	15	45	5
"	"	1 & 2	3	15	45	5
"	"	3*	3	160	480	53
"	"	3*	3	500	1500	167
"	"	3*	3	15	45	5
"	"	3*	3	10	30	3
"	"	3*	3	10	30	3
"	"	3*	3	15	45	5
"	"	3*	3	10	30	3
"	"	3*	3	10	30	3
"	"	3*	3	15	45	5
"	"	3*	3	10	30	3
"	"	3*	3	10	30	3
"	"	1 & 2*	3	20	60	7
"	"	"	3	15	45	5
"	"	"	3	30	90	10
"	"	"	3	30	90	10
"	"	"	3	10	30	3
"	"	"	3	10	30	3
"	"	"	3	30	90	10
"	"	"	3	15	45	5
"	"	"	3	30	90	10
"	"	"	3	10	30	3
"	"	"	3	30	90	10
"	"	2 & 3*	3	10	30	3
Totals:					3,126	347

Specific Location		Lane No. (1,2,3)	Pavement Patch Width (Feet)	Pavement Patch Length (Feet)	Repair Area (Sq.Ft.)	Repair Area (Sq.Yd)
From	To					
Caton Farm	US 30	1 & 2*	3	10	30	3
"	"	1 & 2*	3	15	45	5
"	"	1 & 2*	3	30	90	10
"	"	3*	3	10	30	3
"	"	3*	3	12	36	4
"	"	1 & 2*	3	15	45	5
"	"	2* & 3*	3	10	30	3
"	"	3*	3	30	90	10
"	"	2	3	10	30	3
"	"	3*	3	200	600	67
"	"	3*	3	10	30	3
"	"	3*	3	10	30	3
"	"	3*	3	90	270	30
"	"	3*	3	120	360	40
"	"	3*	3	80	240	27
"	"	3*	3	15	45	5
"	"	1*	3	30	90	10
"	"	2*	3	15	45	5
"	"	2*	3	15	45	5
"	"	3*	3	60	180	20
"	"	"	3	10	30	3
"	"	"	3	10	30	3
"	"	1 & 2*	3	10	30	3
"	"	3*	3	12	36	4
Totals:					2487	276

Specific Location		Lane No. (1,2,3)	Pavement Patch Width (Feet)	Pavement Patch Length (Feet)	Repair Area (Sq.Ft.)	Repair Area (Sq.Yd)
From	To					
US 30	Lockport	3	3	10	30	3
"	"	1 & 2*	3	12	36	4
"	"	"	3	15	45	5
"	"	"	3	30	90	10
"	"	"	3	10	30	3
"	"	3	3	15	45	5
"	"	"	3	40	120	13
"	"	"	3	10	30	3
Totals:					426	47

Specific Location		Lane No. (1,2,3)	Pavement Patch Width (Feet)	Pavement Patch Length (Feet)	Repair Area (Sq.Ft.)	Repair Area (Sq.Yd)
From	To					
Lockport	IL-126	2 & 3*	3	15	45	5
"	"	2*	3	10	30	3
"	"	3*	3	10	30	3
"	"	"	3	15	45	5
"	"	"	3	12	36	4
"	"	2*	3	10	30	3
"	"	3*	3	10	30	3
"	"	"	3	10	30	3
"	"	"	3	10	30	3
"	"	2 & 3*	3	10	30	3
"	"	2*	3	10	30	3
"	"	*	3	10	30	3
"	"	"	3	10	30	3
"	"	2 & 3*	3	10	30	3
"	"	2*	3	10	30	3
"	"	3	3	10	30	3
"	"	"	3	60	180	20
"	"	"	3	15	45	5
Totals:					741	82

Specific Location		Lane No. (1,2,3)	Pavement Patch Width (Feet)	Pavement Patch Length (Feet)	Repair Area (Sq.Ft.)	Repair Area (Sq.Yd)
From	To					
IL-126	Weber Rd	1	3	40	120	13
"	"	"	3	40	120	13
"	"	"	3	30	90	10
"	"	3	3	10	30	3
"	"	1	3	70	210	23
Totals:					570	63

NORTHBOUND JOINT PATCHING SUMMARY

Specific Location		Repair Area (Sq.Ft.)	Repair Area (Sq.Yd)	Total Joint Length (Ft.)
From	To			
US 52	Black Rd	435	48	145
Black Rd	Caton Farm Rd	3,126	347	1042
Caton Farm Rd	US 30	2487	276	829
US 30	Lockport/Plainfield Rd	426	47	142
Lockport/Plainfield Rd	IL-126	741	82	247
IL-126	Weber Rd	570	63	190
Totals:		7785	865	2595

MODEL: Default
FILE: Model_Plan_Schedule.dwg
PROJECT: I:\Projects\134820\CADD\Drawings\DOT\Office\Drawings\134820-01-01-01-01.dgn

USER NAME = qarutnm	DESIGNED -	REVISED -
PLOT SCALE = 100.0000' / in.	CHECKED -	REVISED -
PLOT DATE = 2/7/2020	DATE -	REVISED -

STATE OF ILLINOIS DEPARTMENT OF TRANSPORTATION

SCHEDULE OF QUANTITIES					
I-55 (BARACK OBAMA PRESIDENTIAL EXPY) (I-80 TO SOUTH WEBER RD.)					
SCALE:	SHEET	OF	SHEETS	STA.	TO STA.

F.A.I. RTE.	SECTION	COUNTY	TOTAL SHEETS	SHEET NO.
55	2019-181-PP	WILL	26	5
CONTRACT NO. 62K54				
ILLINOIS FED. AID PROJECT				

SOUTHBOUND JOINT PATCHING

Specific Location		Lane No. (1,2,3)	Pavement Patch Width (Feet)	Pavement Patch Length (Feet)	Repair Area (Sq.Ft.)	Repair Area (Sq.Yd)
From	To					
Weber Rd	IL-126	1 & 2*	3	15	45	5
"	"	2*	3	12	36	4
"	"	1 & 2*	3	15	45	5
"	"	"	3	30	90	10
"	"	"	3	30	90	10
"	"	1 & 2*	3	30	90	10
"	"	"	3	30	90	10
"	"	*	3	15	45	5
"	"	RS	3	30	90	10
"	"	1 & 2*	3	30	90	10
"	"	3 & R	3	30	90	10
"	"	1 & 2*	3	90	270	30
Totals:					1071	119

Specific Location		Lane No. (1,2,3)	Pavement Patch Width (Feet)	Pavement Patch Length (Feet)	Repair Area (Sq.Ft.)	Repair Area (Sq.Yd)
From	To					
IL-126	Lockport	3 & S*	3	30	90	10
"	"	1 & 2*	3	30	90	10
"	"	3 & S*	3	90	270	30
"	"	2 & 3*	3	30	90	10
"	"	3*	3	60	180	20
"	"	1*	12	350	4200	467
"	"	2*	12	350	4200	467
"	"	3*	12	350	4200	467
"	"	"	3	800	2400	267
"	"	*	12	12	144	16
"	"	1 & 2*	3	90	270	30
"	"	2*	12	15	180	20
"	"	"	12	15	180	20
"	"	3*	12	15	180	20
"	"	"	12	15	180	20
"	"	2*	12	12	144	16
"	"	"	12	12	144	16
"	"	3*	12	12	144	16
"	"	"	12	12	144	16
"	"	2*	12	15	180	20
"	"	3*	12	30	360	40
"	"	2*	12	15	180	20
"	"	3*	12	15	180	20
"	"	3 & S*	3	350	1050	117
"	"	2 & 3*	3	840	2520	280
"	"	3 & S*	3	840	2520	280
Totals:					24420	2713

Specific Location		Lane No. (1,2,3)	Pavement Patch Width (Feet)	Pavement Patch Length (Feet)	Repair Area (Sq.Ft.)	Repair Area (Sq.Yd)
From	To					
Lockport	M.M. #260	3 & S*	3	945	2835	315
"	"	"	3	810	2430	270
"	"	3*	12	12	144	16
"	"	2*	12	90	1080	120
"	"	3*	12	135	1620	180
"	"	3 & S*	3	675	2025	225
"	"	3*	3	180	540	60
"	"	1*	12	135	1620	180
"	"	"	12	15	180	20
"	"	3*	12	180	2160	240
"	"	3 & S*	3	180	540	60
"	"	2*	12	60	720	80
"	"	3*	12	30	360	40
"	"	3 & S*	3	225	675	75
"	"	2*	12	12	144	16
"	"	3*	12	12	144	16
Totals:					17217	1913

Specific Location		Lane No. (1,2,3)	Pavement Patch Width (Feet)	Pavement Patch Length (Feet)	Repair Area (Sq.Ft.)	Repair Area (Sq.Yd)
From	To					
M.M. 260	Renwick Rd	2*	12	12	144	16
"	"	3*	12	12	144	16
"	"	3 & S*	3	225	675	75
"	"	2*	12	15	180	20
"	"	3*	12	135	1620	180
"	"	1*	12	90	1080	120
"	"	"	3	540	1620	180
"	"	2*	12	12	144	16
"	"	3*	12	12	144	16
"	"	1*	12	135	1620	180
"	"	2*	12	12	144	16
"	"	3*	12	12	144	16
Totals:					7659	851

Specific Location		Lane No. (1,2,3)	Pavement Patch Width (Feet)	Pavement Patch Length (Feet)	Repair Area (Sq.Ft.)	Repair Area (Sq.Yd)
From	To					
Renwick Rd	US 30	3 & S*	3	45	135	15
"	"	"	3	180	540	60
"	"	1*	12	235	2820	313
"	"	3*	12	12	144	16
"	"	1 & 2*	3	765	2295	255
"	"	3 & S*	3	90	270	30
"	"	1*	12	90	1080	120
"	"	"	12	180	2160	240
"	"	3 & S*	3	225	675	75
"	"	2*	3	90	270	30
"	"	1*	3	90	270	30
"	"	1 & 2*	3	90	270	30
"	"	"	3	135	405	45
"	"	3 & S*	3	135	405	45
"	"	2*	12	10	120	13
"	"	3 & S*	3	225	675	75
"	"	1*	12	15	180	20
Totals:					12714	1413

Specific Location		Lane No. (1,2,3)	Pavement Patch Width (Feet)	Pavement Patch Length (Feet)	Repair Area (Sq.Ft.)	Repair Area (Sq.Yd)
From	To					
US 30	US Bridge	3 & S*	3	180	540	60
"	"	"	3	315	945	105
"	"	"	3	45	135	15
"	"	"	3	90	270	30
"	"	1*	12	30	360	40
"	"	"	12	90	1080	120
"	"	2 & 3*	3	45	135	15
"	"	2*	3	180	540	60
"	"	"	3	405	1215	135
"	"	1*	3	1125	3375	375
"	"	"	12	15	180	20
"	"	2*	3	45	135	15
"	"	"	3	45	135	15
"	"	1*	12	225	2700	300
"	"	"	12	270	3240	360
"	"	3 & S*	3	135	405	45
Totals:					15390	1710

SOUTHBOUND JOINT PATCHING
CONTINUED ON THE FOLLOWING PAGE

MODEL: Default
FILE: Model - Pavement.pwd
PROJECT: I-55 (BARACK OBAMA PRESIDENTIAL EXPY) (I-80 TO SOUTH WEBER RD.)
OFFICE: I-55 (BARACK OBAMA PRESIDENTIAL EXPY) (I-80 TO SOUTH WEBER RD.)
DATE: 2/7/2020

USER NAME = qarutnm	DESIGNED -	REVISED -
PLOT SCALE = 100,0000 ' / in.	CHECKED -	REVISED -
PLOT DATE = 2/7/2020	DATE -	REVISED -

STATE OF ILLINOIS
DEPARTMENT OF TRANSPORTATION

SCHEDULE OF QUANTITIES			
I-55 (BARACK OBAMA PRESIDENTIAL EXPY) (I-80 TO SOUTH WEBER RD.)			
SCALE:	SHEET	OF SHEETS	STA. TO STA.

F.A.I. RTE.	SECTION	COUNTY	TOTAL SHEETS	SHEET NO.
55	2019-181-PP	WILL	26	6
			CONTRACT NO. 62K54	
		ILLINOIS FED. AID PROJECT		

Specific Location		Lane No. (1,2,3)	Pavement Patch Width (Feet)	Pavement Patch Length (Feet)	Repair Area (Sq.Ft.)	Repair Area (Sq.Yd)
From	To					
Caton Farm	Black Rd	2 & 3*	3	220	660	73
"	"	1 & 2*	3	1440	4320	480
"	"	"	3	885	2655	295
"	"	"	3	270	810	90
"	"	"	3	450	1350	150
"	"	1*	12	90	1080	120
"	"	3 & S*	3	45	135	15
"	"	"	3	270	810	90
"	"	1 & 2*	3	675	2025	225
"	"	3 & S*	3	315	945	105
"	"	1*	3	675	2025	225
"	"	"	12	135	1620	180
"	"	"	12	15	180	20
"	"	3 & S*	3	585	1755	195
"	"	1 & 2*	3	540	1620	180
"	"	3 & S*	3	360	1080	120
"	"	2*	12	45	540	60
"	"	"	12	12	144	16
"	"	2 & 3*	3	90	270	30
"	"	2*	12	45	540	60
"	"	"	12	12	144	16
"	"	3*	12	12	144	16
"	"	2*	12	10	120	13
"	"	3*	12	10	120	13
"	"	2*	12	15	180	20
"	"	3*	12	10	120	13
"	"	1 & 2*	3	180	540	60
"	"	2*	12	12	144	16
"	"	3 & S*	3	180	540	60

SOUTHBOUND JOINT PATCHING CONTINUED

"	"	3*	12	30	360	40
"	"	1 & 2*	3	450	1350	150
"	"	"	3	135	405	45
"	"	2 & 3*	3	30	90	10
"	"	1 & 2*	3	45	135	15
"	"	2*	12	10	120	13
"	"	3*	12	10	120	13
"	"	"	12	12	144	16
"	"	3 & S*	3	225	675	75
"	"	2*	12	10	120	13
"	"	3*	12	10	120	13
"	"	2 & 3*	3	135	405	45
"	"	2*	12	12	144	16
"	"	3 & S*	3	180	540	60
"	"	2*	12	10	120	13
"	"	"	12	10	120	13
"	"	3*	12	10	120	13
"	"	2 & 3*	3	45	135	15
"	"	2*	12	10	120	13
"	"	3 & S*	3	135	405	45
"	"	1 & 2*	3	420	1260	140
"	"	3 & S*	3	225	675	75
"	"	1 & 2*	3	360	1080	120
"	"	2 & 3*	3	360	1080	120
"	"	3 & S*	3	225	675	75
				Total:	37134	4126

Specific Location		Lane No. (1,2,3)	Pavement Patch Width (Feet)	Pavement Patch Length (Feet)	Repair Area (Sq.Ft.)	Repair Area (Sq.Yd)
From	To					
Black Rd	US 52	3 & S	3	405	1215	135
"	"	2 & 3	3	630	1890	210
"	"	3 & S	3	135	405	45
"	"	1	12	90	1080	120
"	"	S & R	3	60	180	20
"	"	1 & 2	3	90	270	30
"	"	1	12	30	360	40
"	"	S & R	3	80	240	27
"	"	"	3	60	180	20
"	"	"	12	30	360	40
"	"	"	12	30	360	40
"	"	"	3	540	1620	180
"	"	"	12	10	120	13
"	"	"	3	315	945	105
"	"	"	12	15	180	20
"	"	"	12	10	120	13
"	"	1 & 2	3	90	270	30
"	"	1	12	30	360	40
"	"	3 & S	3	80	240	27
"	"	"	3	135	405	45
"	"	"	3	15	45	5
"	"	1 & 2	3	90	270	30
"	"	2	12	15	180	20
"	"	"	12	8	96	11
				Total:	11391	1266

SOUTHBOUND JOINT PATCHING SUMMARY

Specific Location		Repair Area (Sq.Ft.)	Repair Area (Sq.Yd)	Total Joint length (Ft.)
From	To			
Weber Rd	IL-126	1071	119	357
IL-126	Lockport	24420	2713	4405
Lockport	M.M. #260	17217	1913	3696
M.M. #260	Renwick Rd	7659	851	1212
Renwick Rd	US 30	12714	1413	2612
US 30	US 30 Bridge	15390	1710	3240
Caton Farm Rd	Black Rd	37134	4126	10707
Black Rd	US 52	11391	1266	2993
Totals:		126996	14111	29222

MODEL: Default
 FILE: h:\mhc\p\pub\haronom.dwg
 PROJECT: 134820\CADD\Drawings\DOT - Office\Drawings\134820-SPH-Sched.dwg

USER NAME = qarutnm	DESIGNED -	REVISED -
	DRAWN -	REVISED -
PLOT SCALE = 100.0000' / in.	CHECKED -	REVISED -
PLOT DATE = 2/7/2020	DATE -	REVISED -

**STATE OF ILLINOIS
DEPARTMENT OF TRANSPORTATION**

SCHEDULE OF QUANTITIES			
I-55 (BARACK OBAMA PRESIDENTIAL EXPY) (I-80 TO SOUTH WEBER RD.)			
SCALE:	SHEET	OF SHEETS	STA. TO STA.

F.A.I. RTE. 55	SECTION 2019-181-PP	COUNTY WILL	TOTAL SHEETS 26	SHEET NO. 7
ILLINOIS FED. AID PROJECT				
CONTRACT NO. 62K54				

NORTHBOUND LANE PATCHING

Specific Location		Lane No. (1,2,3)	Pavement Patch Width (Feet)	Pavement Patch Length (Feet)	Repair Area (Sq.Ft.)	Repair Area (Sq.Yd)
From	To					
½ mile S/O I-80 (M.M. #250)	---	1	12	10	120	13
"	"	2	12	10	120	13
"	"	3	12	10	120	13
"	"	2	12	15	180	20
"	"	3	12	15	180	20
I-80 E/B Ramp	---	Ramp/Lane 4	12	70	840	93
I-80 Bridge	---	1	12	12	144	16
I-80	NB I-55 Ramp	Ramp/Lane 4	12	10	120	13
"	"	"	3	200	600	67
"	"	"	12	500	6000	667
Totals:					8424	936

Specific Location		Lane No. (1,2,3)	Pavement Patch Width (Feet)	Pavement Patch Length (Feet)	Repair Area (Sq.Ft.)	Repair Area (Sq.Yd)
From	To					
Route 59 Bridge (M.M. #251)	---	1 & 2	3	520	1560	173
"	"	"	3	280	840	93
"	"	3	7	280	1960	218
"	"	3 & S	7	800	5600	622
"	"	3	12	40	480	53
"	"	2	12	10	120	13
"	"	"	12	10	120	13
"	"	3	12	10	120	13
Totals:					10800	1200

Specific Location		Lane No. (1,2,3)	Pavement Patch Width (Feet)	Pavement Patch Length (Feet)	Repair Area (Sq.Ft.)	Repair Area (Sq.Yd)
From	To					
M.M. #252	Route 52 Bridge (M.M. #253)	3 & S	3	480	1440	160
"	"	1 & 2	3	160	480	53
"	"	2	7	20	140	16
"	"	1 & 2	7	440	3080	342
"	"	3	7	80	560	62
"	"	1 & 2	7	100	700	78
"	"	2	48	10	480	53
"	"	3	60	10	600	67
"	"	2	24	10	240	27
"	"	3	24	10	240	27
"	"	3	60	10	600	67
"	"	1 & 2	3	500	1500	167
"	"	"	3	400	1200	133
"	"	3 & S	3	320	960	107
Totals:					12220	1358

Specific Location		Lane No. (1,2,3)	Pavement Patch Width (Feet)	Pavement Patch Length (Feet)	Repair Area (Sq.Ft.)	Repair Area (Sq.Yd)
From	To					
Route 52 Bridge (M.M. #253)	Black Rd Bridge	1	12	200	2400	267
"	"	3	12	12	144	16
"	"	2 & 3	7	80	560	62
"	"	2	12	1000	12000	1333
"	"	3	12	1000	12000	1333
"	"	1 & 2	3	1500	4500	500
"	"	1 & 2	3	1000	3000	333
"	"	1 & 2	3	400	1200	133
"	"	3 & S	3	500	1500	167
"	"	"	3	1500	4500	500
"	"	1	12	2000	24000	2667
"	"	3 & S	3	1500	4500	500
"	"	2	12	1000	12000	1333
"	"	1 & 2	3	2000	6000	667
Totals:					88304	9812

Specific Location		Lane No. (1,2,3)	Pavement Patch Width (Feet)	Pavement Patch Length (Feet)	Repair Area (Sq.Ft.)	Repair Area (Sq.Yd)
From	To					
Black Rd	Caton Farm	1	12	400	4800	533
"	"	"	12	200	2400	267
"	"	3 & S	3	200	600	67
"	"	2 & 3	3	500	1500	167
"	"	1 & 2	3	500	1500	167
"	"	3 & S	3	600	1800	200
"	"	"	3	600	1800	200
"	"	"	3	500	1500	167
"	"	2 & 3	3	300	900	100
"	"	2	12	280	3360	373
Totals:					20160	2240

Specific Location		Lane No. (1,2,3)	Pavement Patch Width (Feet)	Pavement Patch Length (Feet)	Repair Area (Sq.Ft.)	Repair Area (Sq.Yd)
From	To					
Caton Farm	M.M. #255	2 & 3	3	200	600	67
"	"	3 & S	3	1000	3000	333
"	"	1 & 2	3	1000	3000	333
Totals:					6600	733

NORTHBOUND LANE PATCHING SUMMARY

Specific Location		Repair Area (Sq.Ft.)	Repair Area (Sq.Yd)
From	To		
½ mile S/O I-80 (M.M. #250)	NB I-55 Ramp	8424	936
Route 59 Bridge (M.M. #251)	---	10800	1200
M.M. #252	Route 52 Bridge (M.M. #253)	12220	1358
Route 52 Bridge (M.M. #253)	Black Rd Bridge	88304	9812
Black Rd Bridge	Caton Farm Bridge	20160	2240
Caton Farm Bridge	M.M. #255	6600	733
Totals:		146508	16279

MODEL: Default
 FILE: Northbound_PavingPlanroom.dwg
 PROJECT: I-55 (BARACK OBAMA PRESIDENTIAL EXPY) (I-80 TO SOUTH WEBER RD.)
 SHEET: 26 OF 28
 DATE: 2/7/2020

USER NAME = qarutnm	DESIGNED -	REVISED -
	DRAWN -	REVISED -
PLOT SCALE = 100.0000' / in.	CHECKED -	REVISED -
PLOT DATE = 2/7/2020	DATE -	REVISED -

**STATE OF ILLINOIS
DEPARTMENT OF TRANSPORTATION**

SCHEDULE OF QUANTITIES			
I-55 (BARACK OBAMA PRESIDENTIAL EXPY) (I-80 TO SOUTH WEBER RD.)			
SCALE:	SHEET	OF SHEETS	STA. TO STA.

F.A.I. RTE.	SECTION	COUNTY	TOTAL SHEETS	SHEET NO.
55	2019-181-PP	WILL	26	8
CONTRACT NO. 62K54				
ILLINOIS		FED. AID PROJECT		

SOUTHBOUND LANE PATCHING

Specific Location		Lane No. (1,2,3)	Pavement Patch Width (Feet)	Pavement Patch Length (Feet)	Repair Area (Sq.Ft.)	Repair Area (Sq.Yd)
From	To					
½ mile after US 30	Black Rd Bridge (M.M. #254)	1	12	25	300	33
"	"	3	12	10	120	13
"	"	"	3	10	30	3
"	"	1 & 2*	3	80	240	27
"	"	2	3	10	30	3
"	"	"	7	50	350	39
Totals:					1070	119

Specific Location		Lane No. (1,2,3)	Pavement Patch Width (Feet)	Pavement Patch Length (Feet)	Repair Area (Sq.Ft.)	Repair Area (Sq.Yd)
From	To					
Route 59 (M.M. #252)	Route 59 (M.M. #251)	1 & 2	3	40	120	13
"	"	"	3	200	600	67
"	"	2	24	10	240	27
"	"	1 & 2	3	180	540	60
Totals:					1500	167

Specific Location		Lane No. (1,2,3)	Pavement Patch Width (Feet)	Pavement Patch Length (Feet)	Repair Area (Sq.Ft.)	Repair Area (Sq.Yd)
From	To					
Black Rd Bridge (M.M. #254)	Route 52 (M.M. #253)	2	7	10	70	8
"	"	"	48	10	480	53
"	"	3	48	10	480	53
"	"	1 & 3*	3	100	300	33
"	"	"	3	10	30	3
"	"	2	24	10	240	27
"	"	3	24	10	240	27
"	"	2	7	10	70	8
"	"	1 & 2*	3	80	240	27
"	"	"	3	40	120	13
"	"	2	24	10	240	27
"	"	3	24	10	240	27
"	"	2	12	10	120	13
"	"	3	12	10	120	13
"	"	1 & 2*	3	160	480	53
"	"	3	12	10	120	13
"	"	1 & 2*	3	200	600	67
"	"	3	12	10	120	13
"	"	"	84	10	840	93
"	"	"	12	10	120	13
"	"	1 & 2*	3	30	90	10
"	"	3	12	10	120	13
Totals:					5480	609

Specific Location		Lane No. (1,2,3)	Pavement Patch Width (Feet)	Pavement Patch Length (Feet)	Repair Area (Sq.Ft.)	Repair Area (Sq.Yd)
From	To					
Main Line Ramp	I-80 W/B (M.M. #251)	Ramp Lane 4	7	200	1400	156
"	"	"	7	120	840	93
"	"	1 & 2	7	40	280	31
Totals:					2520	280

Specific Location		Lane No. (1,2,3)	Pavement Patch Width (Feet)	Pavement Patch Length (Feet)	Repair Area (Sq.Ft.)	Repair Area (Sq.Yd)
From	To					
I-80 W/B (M.M. #251)	I-80 Bridge (M.M. #250)	2	7	72	504	56
"	"	3	7	72	504	56
"	"	2	8	12	96	11
"	"	3	7	12	84	9
Totals:					1188	132

Specific Location		Lane No. (1,2,3)	Pavement Patch Width (Feet)	Pavement Patch Length (Feet)	Repair Area (Sq.Ft.)	Repair Area (Sq.Yd)
From	To					
Route 52 (M.M. #253)	Route 59 Bridge (M.M. #252)	1 & 2*	3	30	90	10
"	"	"	3	40	120	13
"	"	2	12	10	120	13
Totals:					330	37

SOUTHBOUND LANE PATCHING SUMMARY

Specific Location		Repair Area (Sq.Ft.)	Repair Area (Sq.Yd)
From	To		
½ mile after US 30	Black Rd Bridge (M.M. #254)	1070	119
Black Rd Bridge (M.M. #254)	Route 52 (M.M. #253)	5480	609
Route 52 (M.M. #253)	Route 59 (M.M. #252)	330	37
Route 59 (M.M. #252)	Route 59 (M.M. #251)	1500	167
Main Line Ramp	I-80 W/B (M.M. #251)	2520	280
I-80 W/B (M.M. #251)	I-80 Bridge (M.M. #250)	1188	132
Totals:		12088	1343

MODEL: Default
 FILE: Model: Pavement.pwd
 PROJECT: I-55 (BARACK OBAMA PRESIDENTIAL EXPY) (I-80 TO SOUTH WEBER RD.)
 OFFICE: I-55 (BARACK OBAMA PRESIDENTIAL EXPY) (I-80 TO SOUTH WEBER RD.)
 DATE: 2/7/2020

USER NAME = qarutnm	DESIGNED -	REVISED -
	DRAWN -	REVISED -
PLOT SCALE = 100,0000 ' / in.	CHECKED -	REVISED -
PLOT DATE = 2/7/2020	DATE -	REVISED -

**STATE OF ILLINOIS
DEPARTMENT OF TRANSPORTATION**

SCHEDULE OF QUANTITIES			
I-55 (BARACK OBAMA PRESIDENTIAL EXPY) (I-80 TO SOUTH WEBER RD.)			
SCALE:	SHEET	OF	SHEETS

F.A.I. RTE.	SECTION	COUNTY	TOTAL SHEETS	SHEET NO.
55	2019-181-PP	WILL	26	9
ILLINOIS FED. AID PROJECT			CONTRACT NO. 62K54	

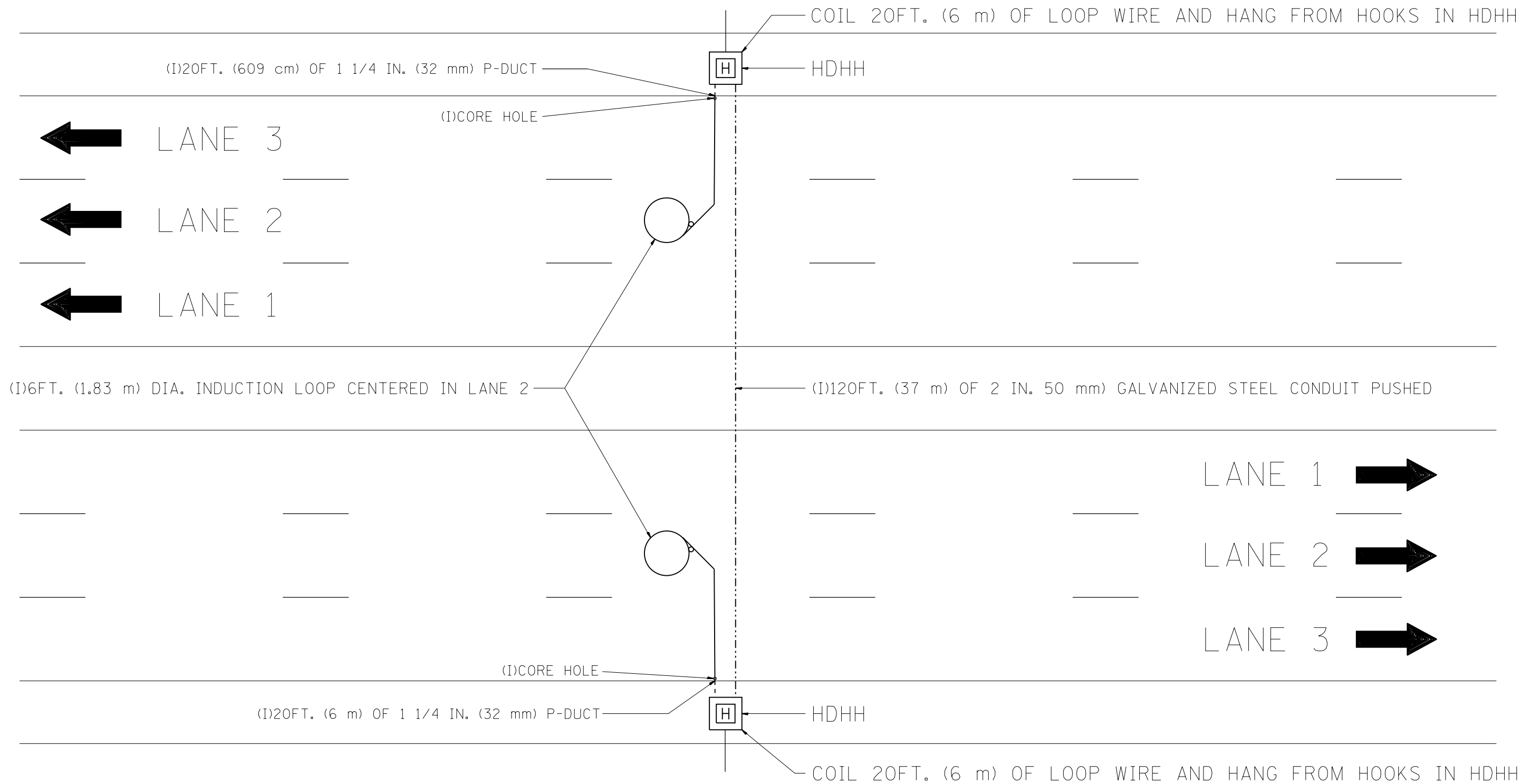
I-55 PATCHING SUMMARY

Type of Patching	Northbound	Southbound	Additional Quantity *	Total NB & SB
Joint Length (Ft.)	2595	29222	11268	43100
Lane Patching (Sq.Yd.)	16279	1343	16846	34400
Class D Patching (Sq.yd.)	-	-	-	2200

✱ ADDITIONAL QUANTITY LOCATION IS TO BE DETERMINED BY THE RESIDENT ENGINEER IN THE FIELD

MODEL: Default
 FILE: \\nas101.pw.state.il.us\pub\haronm.d\at\illinois.gov\PWIDOT\Documents\DOT_Offices\District_1\Projects\134820\CADD\Design\134820-sh-schedule.dgn

USER NAME = qarutnm PLOT SCALE = 100.0000' / in. PLOT DATE = 2/7/2020	DESIGNED - DRAWN - CHECKED - DATE -	REVISED - REVISED - REVISED - REVISED -	STATE OF ILLINOIS DEPARTMENT OF TRANSPORTATION	SCHEDULE OF QUANTITIES I-55 (BARACK OBAMA PRESIDENTIAL EXPY) (I-80 TO SOUTH WEBER RD.)	F.A.I. RTE. 55 SECTION 2019-181-PP COUNTY WILL TOTAL SHEETS 26 SHEET NO. 10 CONTRACT NO. 62K54 ILLINOIS FED. AID PROJECT			
SCALE:			SHEET	OF	SHEETS	STA.	TO	STA.



NOTE:
 THE COST OF LOOP WIRE IN HDHH IS INCIDENTAL TO THE INDUCTION LOOP.
 IT SHALL NOT BE MEASURE FOR PAYMENT.

MODEL: Default
 FILE: \\mtrc-pw\pub\harcourt\dot\illinois\pwr\DOT\Documents\DOT_Offices\Drawings\1\Projects\134820\CADD\Drawings\134820-sh-detailed.dgn

USER NAME = qarutnm	DESIGNED -	REVISED -
	DRAWN -	REVISED -
PLOT SCALE = 100.0000' / in.	CHECKED -	REVISED -
PLOT DATE = 2/7/2020	DATE -	REVISED -

STATE OF ILLINOIS
DEPARTMENT OF TRANSPORTATION
 TRAFFIC SYSTEMS CENTER

ONE LANE COUNT STATION

SCALE: SHEET OF SHEETS STA. TO STA.

F.A.I. RTE.	SECTION	COUNTY	TOTAL SHEETS	SHEET NO.
55	2019-181-PP	WILL	26	11
CONTRACT NO. 62K54				
FED. ROAD DIST. NO.		ILLINOIS FED. AID PROJECT		

TRAFFIC SYSTEMS CENTER (TY-1TSC-400#31)

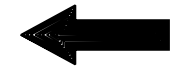
COIL 20FT. (6 m) OF LOOP WIRE AND HANG FROM HOOKS IN HDHH

HDHH WITH STUB OUT 1FT. (30.48 cm) PAST EDGE OF SHOULDER

(I)10FT. (3 m) OF 1 1/4 IN. (32 mm) (P-DUCT(TRENCHED))



LANE 3



LANE 2



LANE 1

(I)120FT. (37 m) OF 2 IN. (50 mm) GALVANIZED STEEL CONDUIT PUSHED

(I)6FT. DIA. (1.83 m) INDUCTION LOOP CENTERED IN EACH LANE

LANE 1



LANE 2



LANE 3



HDHH WITH STUB OUT 1FT. (30.48 cm) PAST EDGE OF SHOULDER

(I)CORE HOLE

(I)10FT. (3 m) OF 1 1/4 IN. (30.0 mm) P-DUCT(TRENCHED)

COIL 20FT. (6 m) OF LOOP WIRE AND HANG FROM HOOKS IN HDHH

NOTE:

THE COST OF LOOP WIRE IN HDHH IS INCIDENTAL TO THE INDUCTION LOOP.
IT SHALL NOT BE MEASURE FOR PAYMENT.

MODEL: Default
 FILE: N:\mfc_p\pub\planroom.dwg
 PROJECT: 134820\CADD\Drawings\DOT_Offices\Drawings\134820-sh-hd-detailed.dwg

USER NAME = qarutnm	DESIGNED -	REVISED -
	DRAWN -	REVISED -
PLOT SCALE = 100.0000' / in.	CHECKED -	REVISED -
PLOT DATE = 2/7/2020	DATE -	REVISED -

STATE OF ILLINOIS
DEPARTMENT OF TRANSPORTATION
 TRAFFIC SYSTEMS CENTER

3 LANE COUNT STATION

SCALE: SHEET OF SHEETS STA. TO STA.

F.A.I. RTE.	SECTION	COUNTY	TOTAL SHEETS	SHEET NO.
55	2019-181-PP	WILL	26	12
CONTRACT NO. 62K54				
FED. ROAD DIST. NO.	ILLINOIS	FED. AID PROJECT		

TRAFFIC SYSTEMS CENTER (TY-1TSC-400#32)

COIL 20FT. (6 m) OF LOOP WIRE AND HANG FROM HOOKS IN HDHH

HDHH WITH STUB OUT 1FT. (30.48 cm) PAST EDGE OF SHOULDER

10FT. (3 m) OF 1 1/4 IN. (32 mm) (P-DUCT(TRENCHED))



LANE 3



LANE 2

2IN. (50 mm) GALVANIZED STEEL CONDUIT PUSHED



LANE 1

COIL 20FT. (6M) OF LOOP WIRE AND HANG FROM HOOKS IN HDHH

2IN. (50 mm) GALVANIZED STEEL CONDUIT PUSHED

(1)6FT. DIA. (1.83 m) INDUCTION LOOP CENTERED IN EACH LANE

COIL 20FT. (6M) OF LOOP WIRE AND HANG FROM HOOKS IN HDHH

LANE 1



2IN. (50 mm) GALVANIZED STEEL CONDUIT PUSHED

LANE 2



LANE 3



HDHH WITH STUB OUT 1FT. (30.48 cm) PAST EDGE OF SHOULDER

CORE HOLE

10FT. (3 m) OF 1 1/4 IN. (30.0 mm) P-DUCT(TRENCHED)

COIL 20FT. (6 m) OF LOOP WIRE AND HANG FROM HOOKS IN HDHH

NOTE:

THE COST OF LOOP WIRE IN HDHH IS INCIDENTAL TO THE INDUCTION LOOP. IT SHALL NOT BE MEASURED FOR PAYMENT.

MODEL: Default
FILE: \\nas101.pw.state.il.us\pub\baronm.d\at\illinois.gov\PI\DOT\Documents\DOT_Offices\District_1\Projects\134820\CADD\Drawings\134820-sh-hd-detailed.dgn

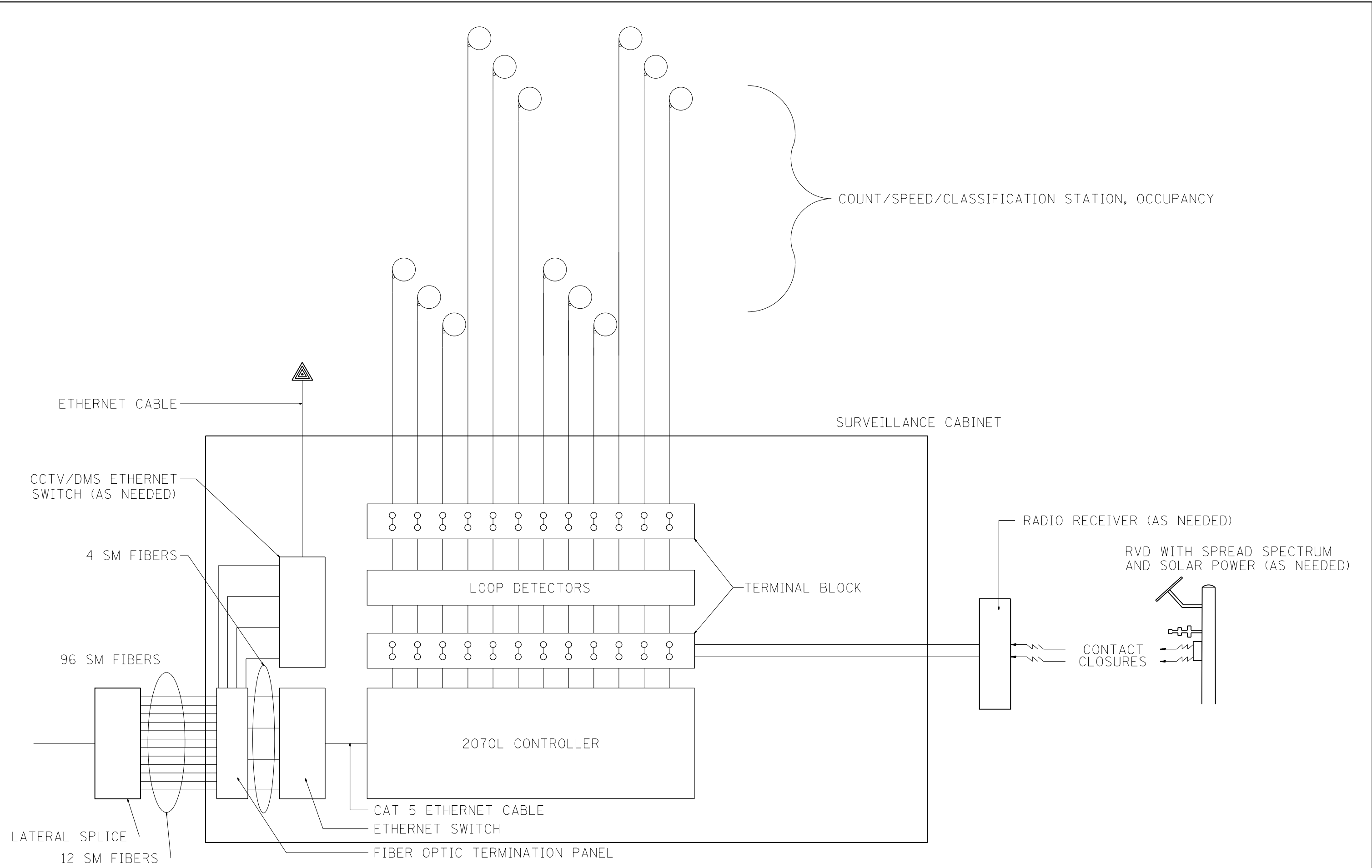
USER NAME = qarutnm	DESIGNED -	REVISED -
PLOT SCALE = 100.0000' / in.	DRAWN -	REVISED -
PLOT DATE = 2/7/2020	CHECKED -	REVISED -
	DATE -	REVISED -

**STATE OF ILLINOIS
DEPARTMENT OF TRANSPORTATION
TRAFFIC SYSTEMS CENTER**

3 LANE COUNT STATION
(DIFFERENT DIRECTIONS)

SCALE: SHEET OF SHEETS STA. TO STA.

F.A.I. RTE.	SECTION	COUNTY	TOTAL SHEETS	SHEET NO.
55	2019-181-PP	WILL	26	13
CONTRACT NO. 62K54				
FED. ROAD DIST. NO.	ILLINOIS	FED. AID PROJECT		



MODEL: Default
 FILE: \\nas101\pub\baronm.d\all\mids\pwr\WIDOT\Documents\DOT_Offices\Distric_1\Projects\134820\CADD\Design\134820-sh-detailed.dgn

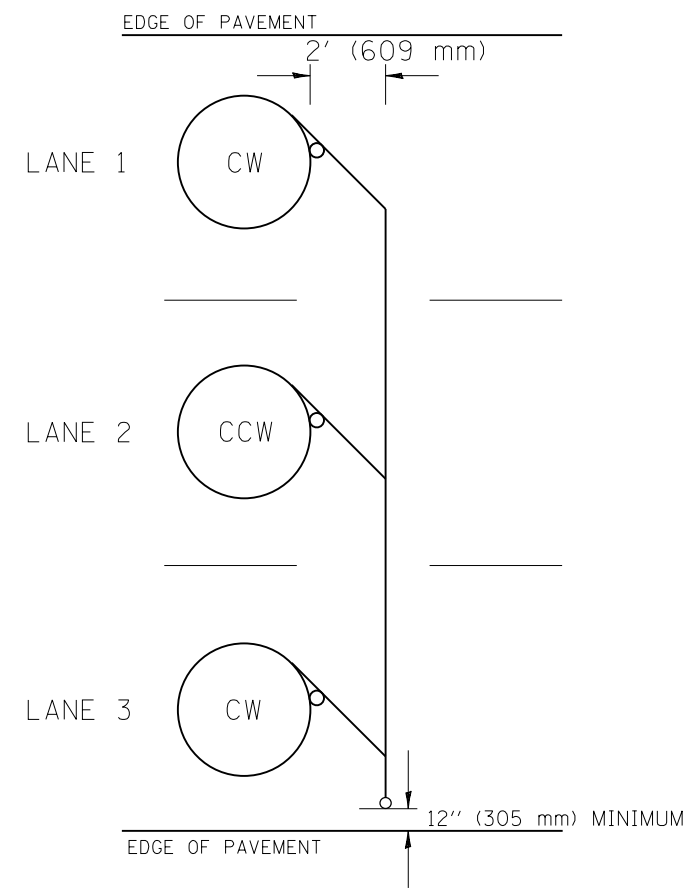
USER NAME = qarutnm	DESIGNED -	REVISED -
PLOT SCALE = 100,0000' / in.	DRAWN -	REVISED -
PLOT DATE = 2/7/2020	CHECKED -	REVISED -
	DATE -	REVISED -

STATE OF ILLINOIS
DEPARTMENT OF TRANSPORTATION
 TRAFFIC SYSTEMS CENTER

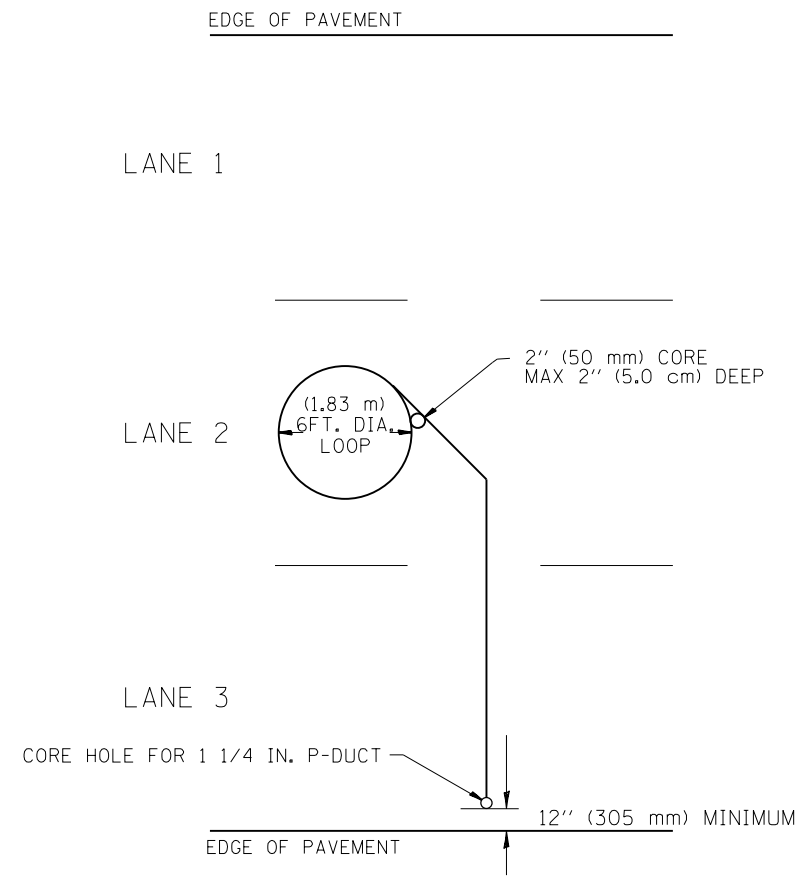
LOOP DETECTOR/SPEED DETECTOR			
CABINET LAYOUT			
SCALE:	SHEET	OF SHEETS	STA. TO STA.

F.A.I. RTE.	SECTION	COUNTY	TOTAL SHEETS	SHEET NO.
55	2019-181-PP	WILL	26	14
CONTRACT NO. 62K54				
FED. ROAD DIST. NO.	ILLINOIS	FED. AID PROJECT		

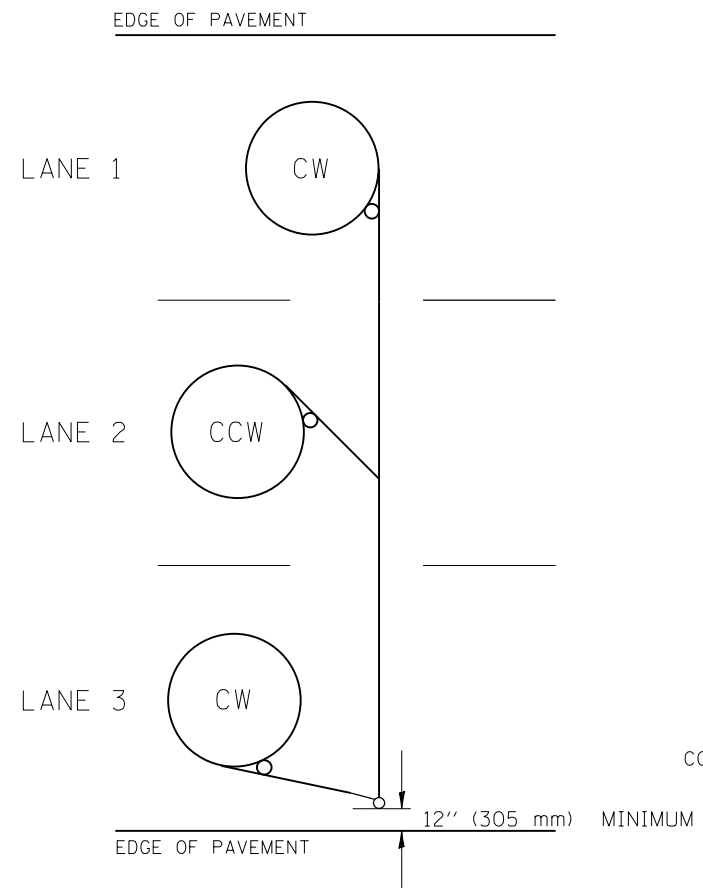
TRAFFIC SYSTEMS CENTER 4TY-1TSC-400#44)



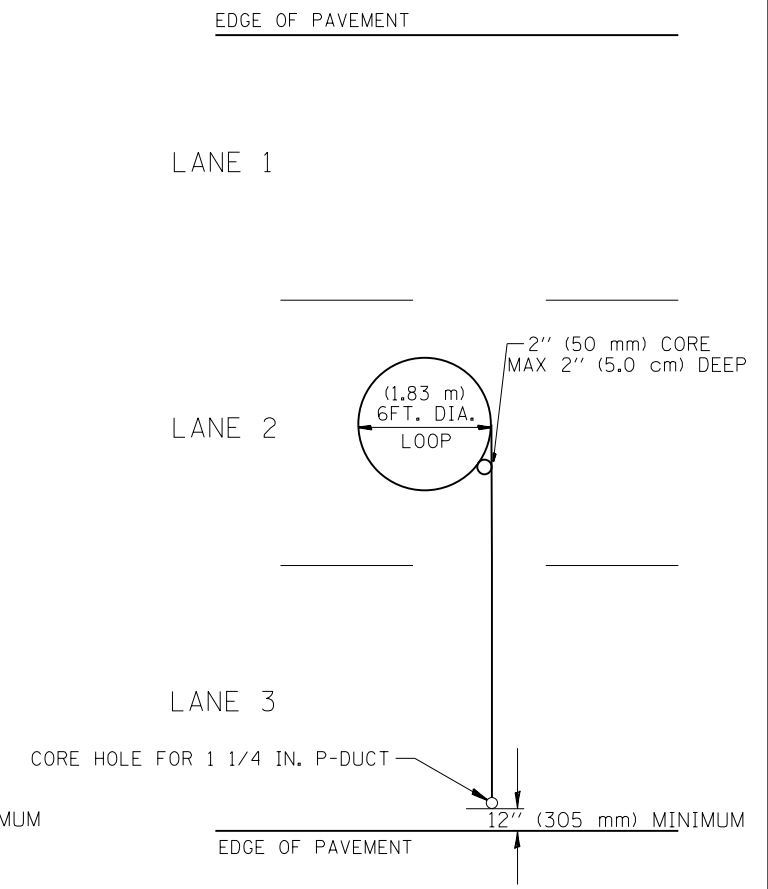
TYPICAL 6' (1.83 m) DIA. INDUCTION LOOP CORE DRILL
LAYOUT FOR MULTIPLE LANE ROADWAY



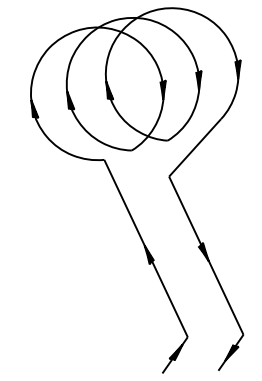
TYPICAL 6' (1.83 m) DIA. INDUCTION LOOP
LAYOUT FOR LANE 2



TYPICAL 6' (1.83 m) DIA. INDUCTION LOOP CORE DRILL
LAYOUT FOR MULTIPLE LANE ROADWAY



TYPICAL 6' (1.83 m) DIA. INDUCTION LOOP
LAYOUT FOR LANE 2



WIRING DETAILS

NOTES

1. EACH LOOP SHALL BE SPLICED TO A 4-C NO.18 TWISTED SHIELDED LEAD IN WHEN 150' (45 m) OR MORE FROM CABINET.
2. LOOPS SHALL BE SPLICED IN HANDHOLES ONLY, OTHERWISE WRITTEN PERMISSION SHALL BE OBTAINED FROM TSC ENGINEER.
3. LOOPS SHALL NOT BE SPLICED IN SERIES.
4. EACH LOOP LEAD IN SHALL BE IDENTIFIED AND PERMANENTLY COLOR CODED IN THE COREHOLE, HANDHOLE & CABINETS THRU WHICH THEY ENTER OR PASS AND TAGGED WITH THE CORRECT NOMENCLATURES.

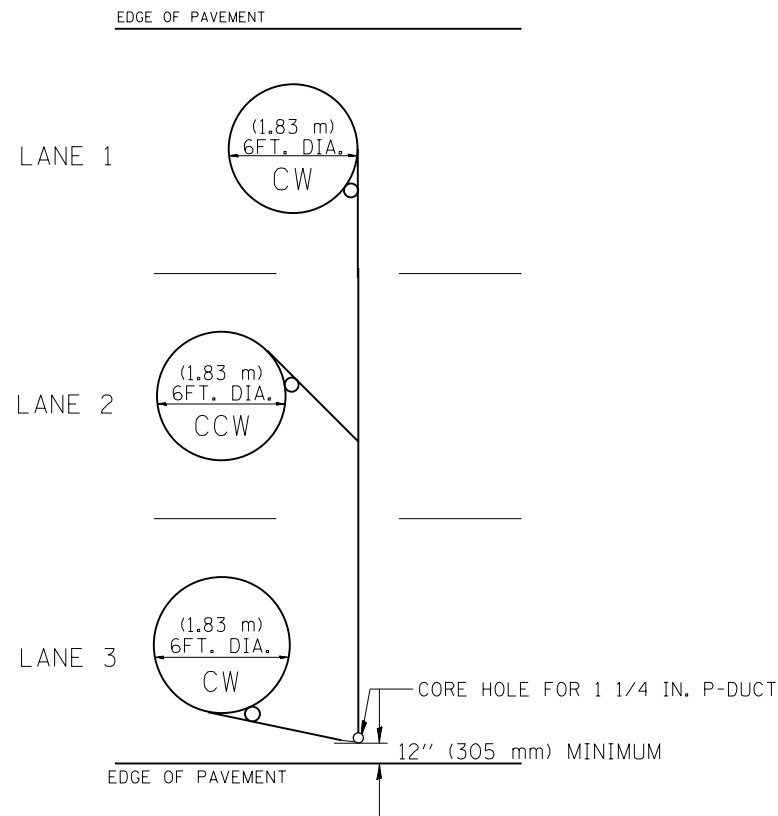
MODEL: Default
FILE: \\nas101.pw.state.il.us\pub\room\dat\illinois\pwr\DOT\Documents\DOT_Offices\Dir\trc_1\Projects\134820\CADD\Drawings\134820-sh-detailed.dgn

USER NAME = qarutnm	DESIGNED -	REVISED -
	DRAWN -	REVISED -
PLOT SCALE = 100.0000 ' / in.	CHECKED -	REVISED -
PLOT DATE = 2/7/2020	DATE -	REVISED -

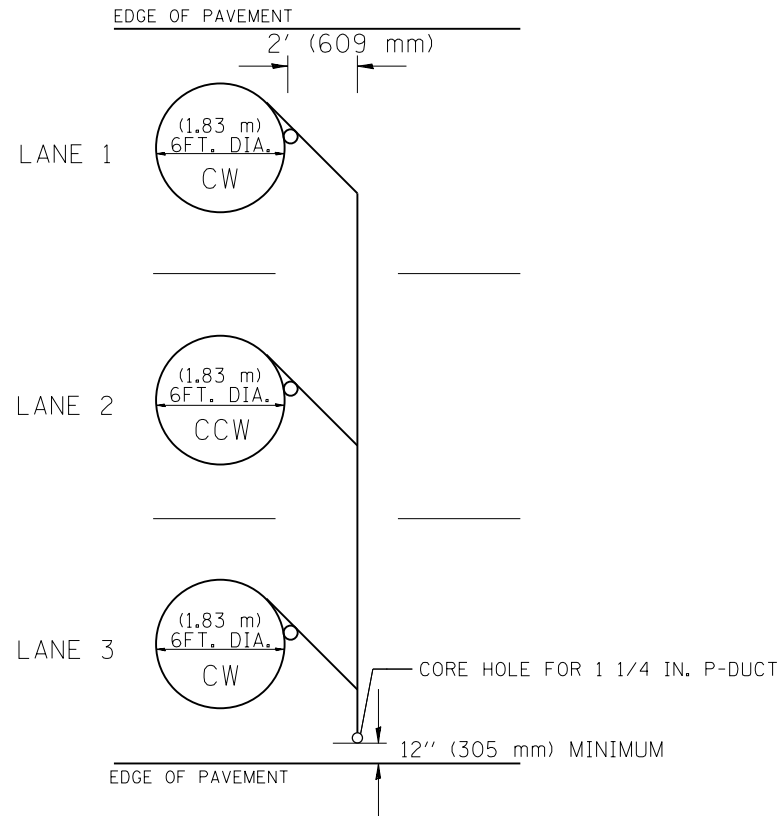
STATE OF ILLINOIS
DEPARTMENT OF TRANSPORTATION
TRAFFIC SYSTEMS CENTER

EXISTING ROUND LOOP INSTALLATION	
SCALE:	SHEET OF SHEETS STA. TO STA.

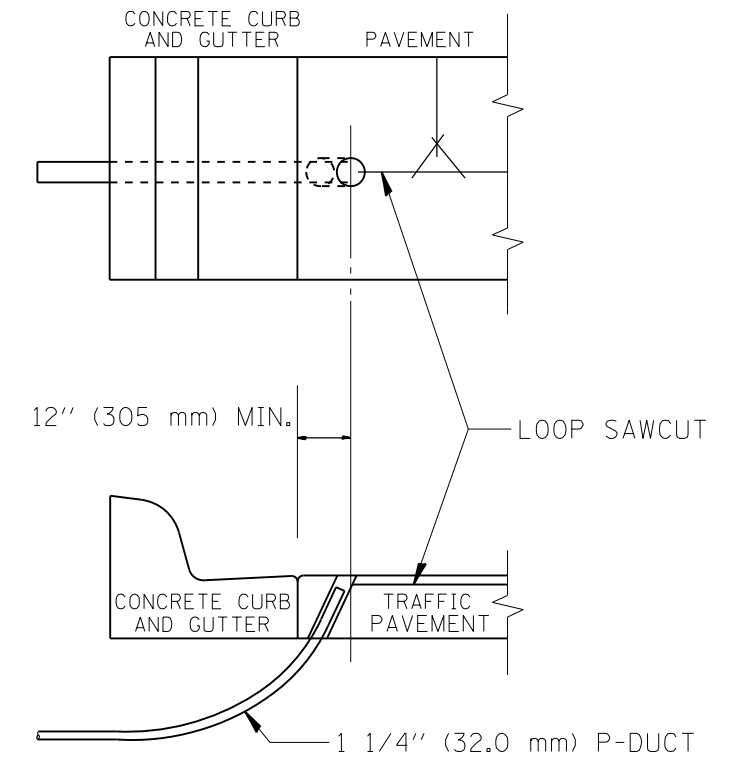
F.A.I. RTE.	SECTION	COUNTY	TOTAL SHEETS	SHEET NO.
55	2019-181-PP	WILL	26	15
CONTRACT NO. 62K54				
FED. ROAD DIST. NO.	ILLINOIS	FED. AID PROJECT		



TYPICAL 6FT. (1.83 m) DIA. INDUCTION LOOP CORE DRILL
LAYOUT FOR MULTIPLE LANE ROADWAY



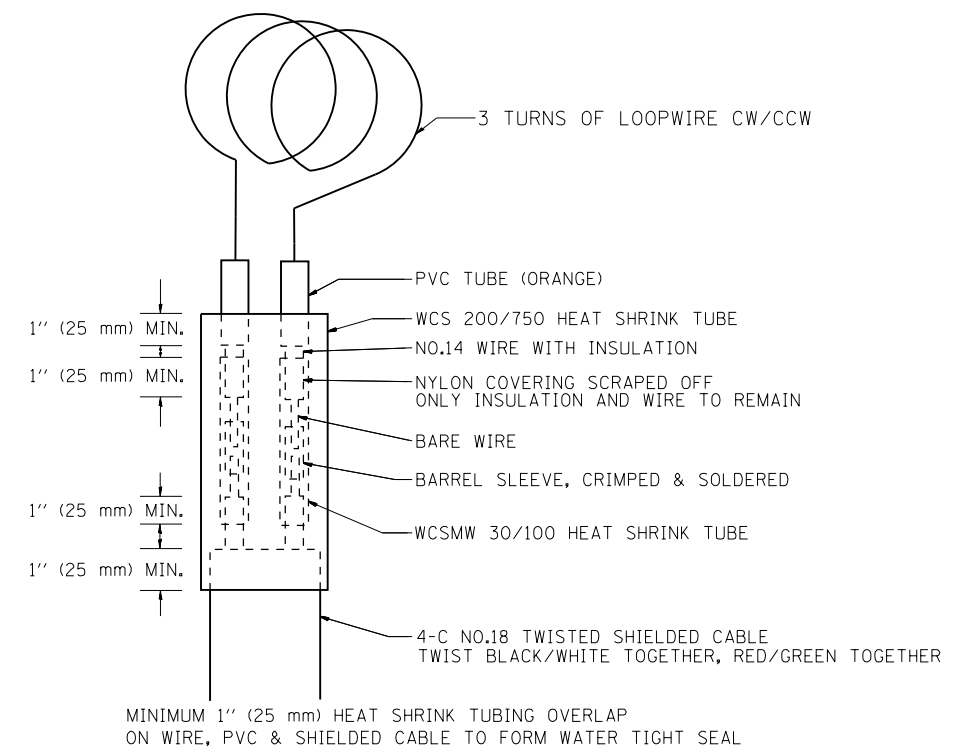
TYPICAL 6FT. (1.83 m) DIA. INDUCTION LOOP CORE DRILL
LAYOUT FOR MULTIPLE LANE ROADWAY



CURB AND GUTTER LOOP LEAD-IN
TRANSITION DETAIL

NOTES

1. EACH LOOP SHALL BE SPLICED TO A 4-C NO.18 TWISTED SHIELDED LEAD IN WHEN 150FT. (45 m) OR MORE FROM CABINET.
2. LOOPS SHALL BE SPLICED IN HANDHOLES ONLY, OTHERWISE WRITTEN PERMISSION SHALL BE OBTAINED FROM TSC ENGINEER.
3. LOOPS SHALL NOT BE SPLICED IN SERIES.
4. EACH LOOP LEAD IN SHALL BE IDENTIFIED AND PERMANENTLY COLOR CODED IN THE COREHOLE, HANDHOLE & CABINETS THRU WHICH THEY ENTER OR PASS AND TAGGED WITH THE CORRECT NOMENCLATURES.



LOOP SPLICING REQUIREMENTS

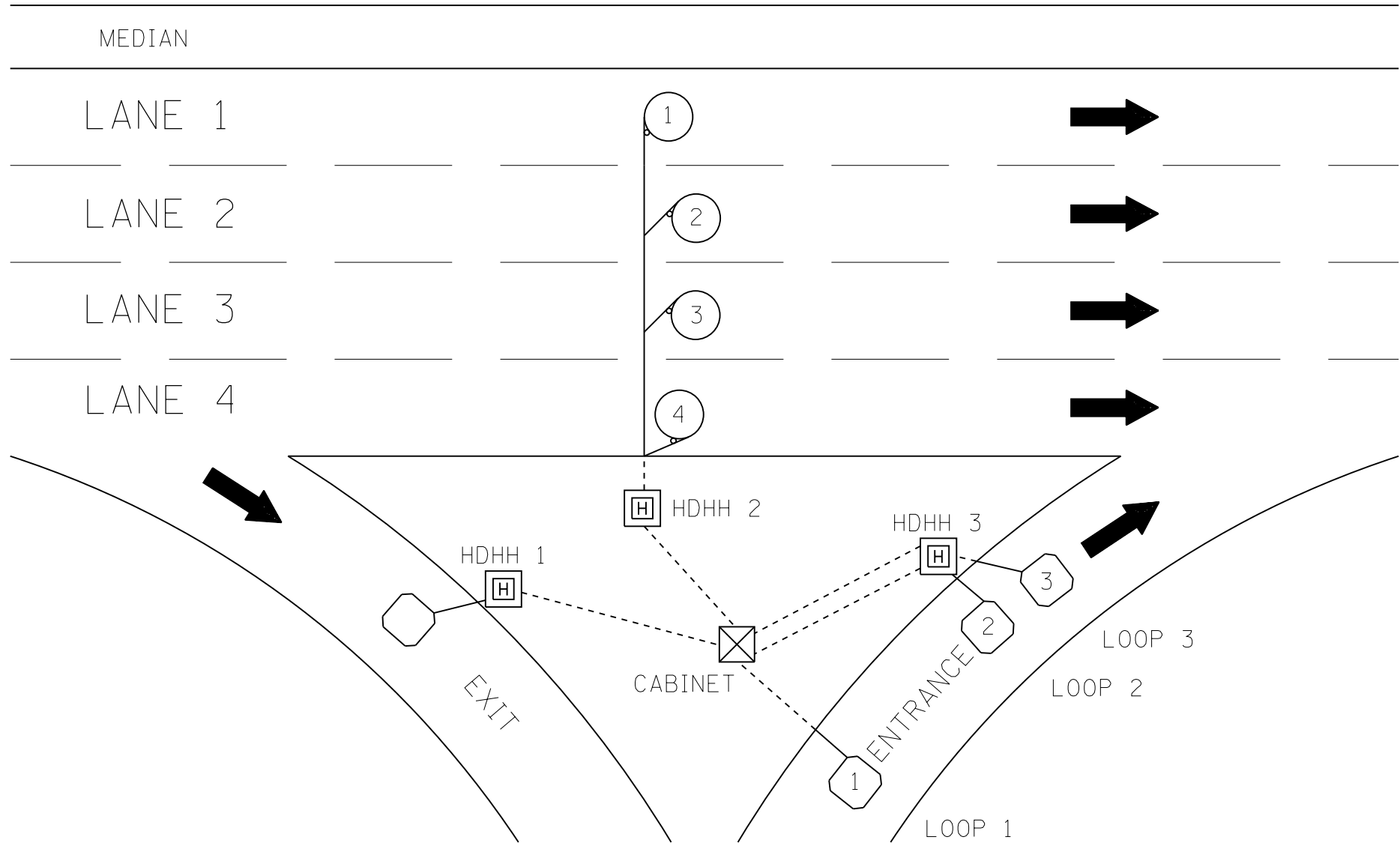
MODEL: Default
FILE: h:\mfc_p\pub\haronom.dwg
PROJECT: 134820\CADD\Drawings\DOT_Offices\Drawings\134820\CADD\Drawings\DOT_Offices\Drawings\134820-sh-detailed.dgn

USER NAME = qarutnm	DESIGNED -	REVISED -
	DRAWN -	REVISED -
PLOT SCALE = 100.0000' / in.	CHECKED -	REVISED -
PLOT DATE = 2/7/2020	DATE -	REVISED -

STATE OF ILLINOIS
DEPARTMENT OF TRANSPORTATION
TRAFFIC SYSTEMS CENTER

EXISTING ROUND INDUCTION LOOP TYPICALS		F.A.I. RTE. 55	SECTION 2019-181-PP	COUNTY WILL	TOTAL SHEETS 26	SHEET NO. 16
SCALE:	SHEET OF SHEETS	STA. TO STA.	CONTRACT NO. 62K54			
		FED. ROAD DIST. NO. ILLINOIS FED. AID PROJECT				

TRAFFIC SYSTEMS CENTER (TY-1TSC-418#2)



SUGGESTED TAG PANDUIT #MP250W175-C OR EQUIVALENT

LOOP ANALYZER					
LOCATION _____			DATE _____		
LOOP LOCATION, LANE DIRECTION	LOOP WIRE MARKED AND CODED	LOOP SIZE	FREQ. INDUCTANCE	INSULATION	LOOP RESISTANCE

HDHH 1 EXAMPLE

IB-EB EXIT
CCW IN/
TO CABINET # _____

HDHH 2 EXAMPLE

IB (OB) LANE # ____
CCW /OUT
TO CABINET # _____

HDHH 3 EXAMPLE

IB-EB ENT.
LOOP #2
CW IN/

NOTE:
EACH LOOP WIRE SHALL BE TAGGED AS "IN" OR "OUT" AND "CW" OR "CCW". SHIELDED CABLE WILL BE TAGGED IN EACH HANDHOLE AND CABINET TO MATCH THE CABLE LOG.

MODEL: Default
FILE NAME: p:\publ\baronm\dat\illinois\goc\PHDOT\Documents\DOT_Offices\Illinet\1\Projects\ID134820\CaddData\Design\ID134820-eh-detailed.dgn

USER NAME = qarutnm	DESIGNED -	REVISED -
PLOT SCALE = 100.0000 ' / in.	DRAWN -	REVISED -
PLOT DATE = 2/7/2020	CHECKED -	REVISED -
	DATE -	REVISED -

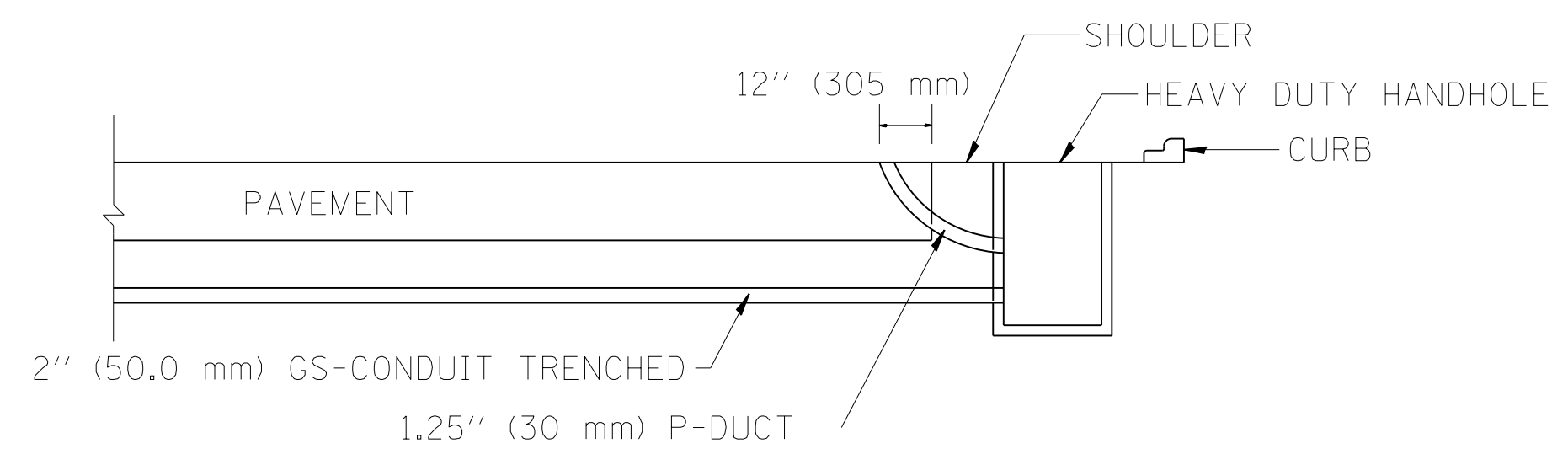
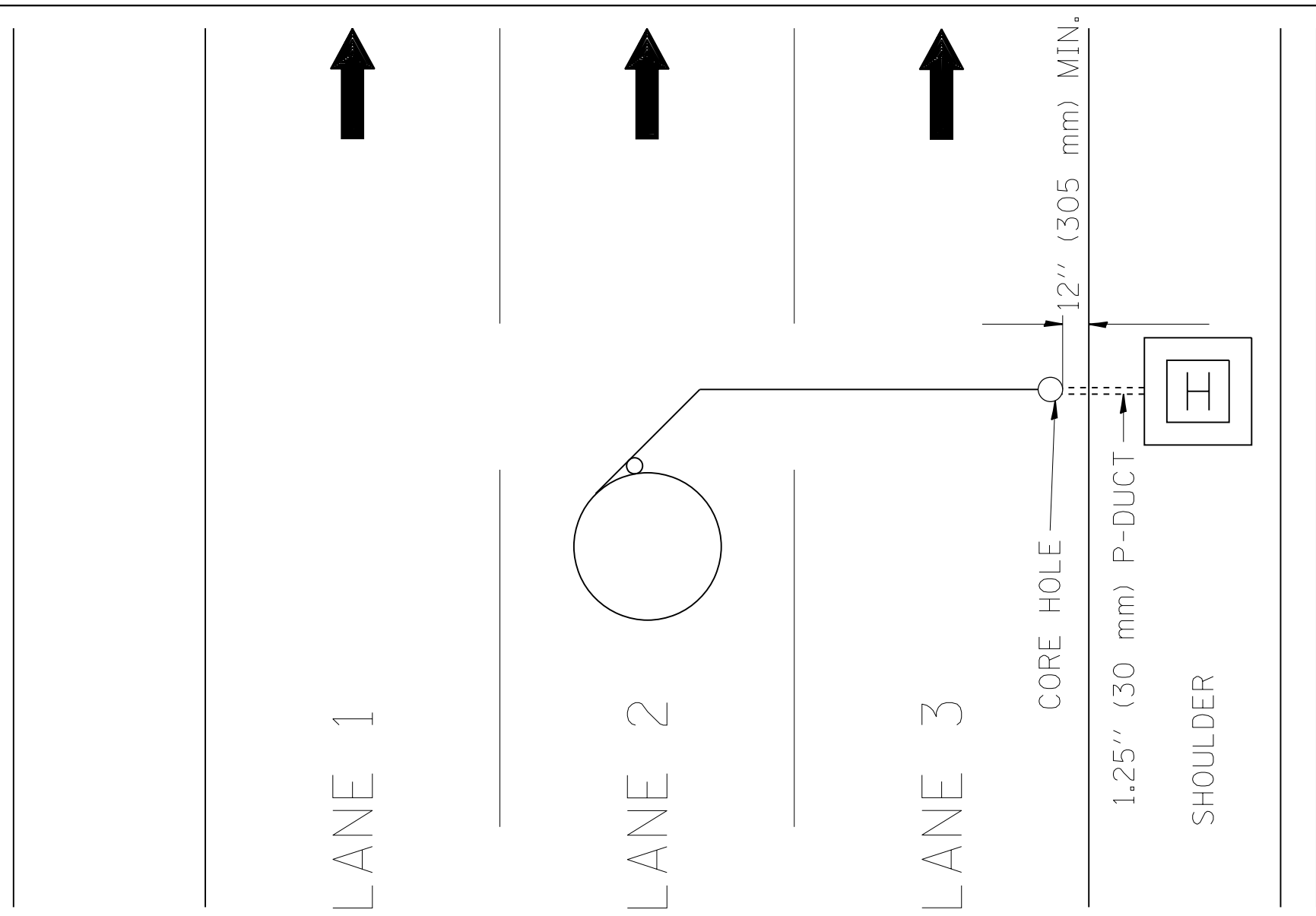
**STATE OF ILLINOIS
DEPARTMENT OF TRANSPORTATION
TRAFFIC SYSTEMS CENTER**

LOOP STATUS REPORT

SCALE:	SHEET	OF	SHEETS	STA.	TO	STA.
--------	-------	----	--------	------	----	------

F.A.I. RTE. 55	SECTION 2019-181-PP	COUNTY WILL	TOTAL SHEETS 26	SHEET NO. 17
CONTRACT NO. 62K54				
FED. ROAD DIST. NO.	ILLINOIS	FED. AID PROJECT		

MODEL: Default
 FILE: h:\mhc\p\suplanroom.d\illinois\p\WID\DOT\Documents\DOT_Offices\District_1\Projects\134820\CADD\Drawings\134820-sh-detailed.dgn



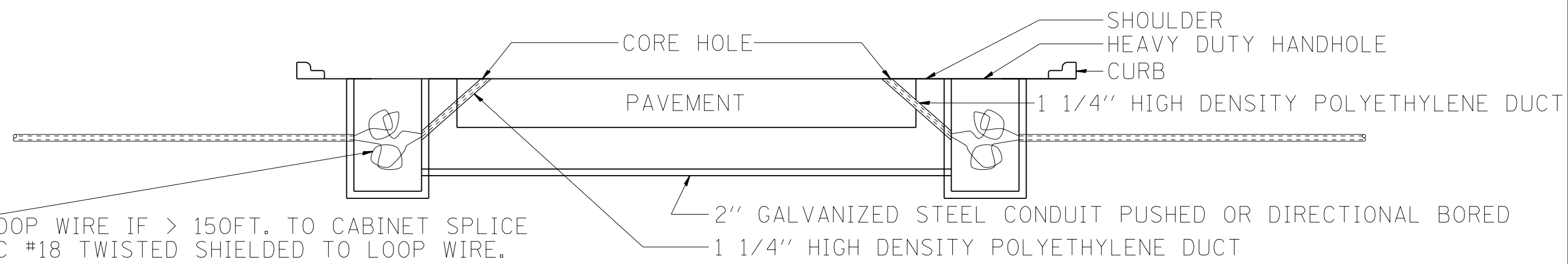
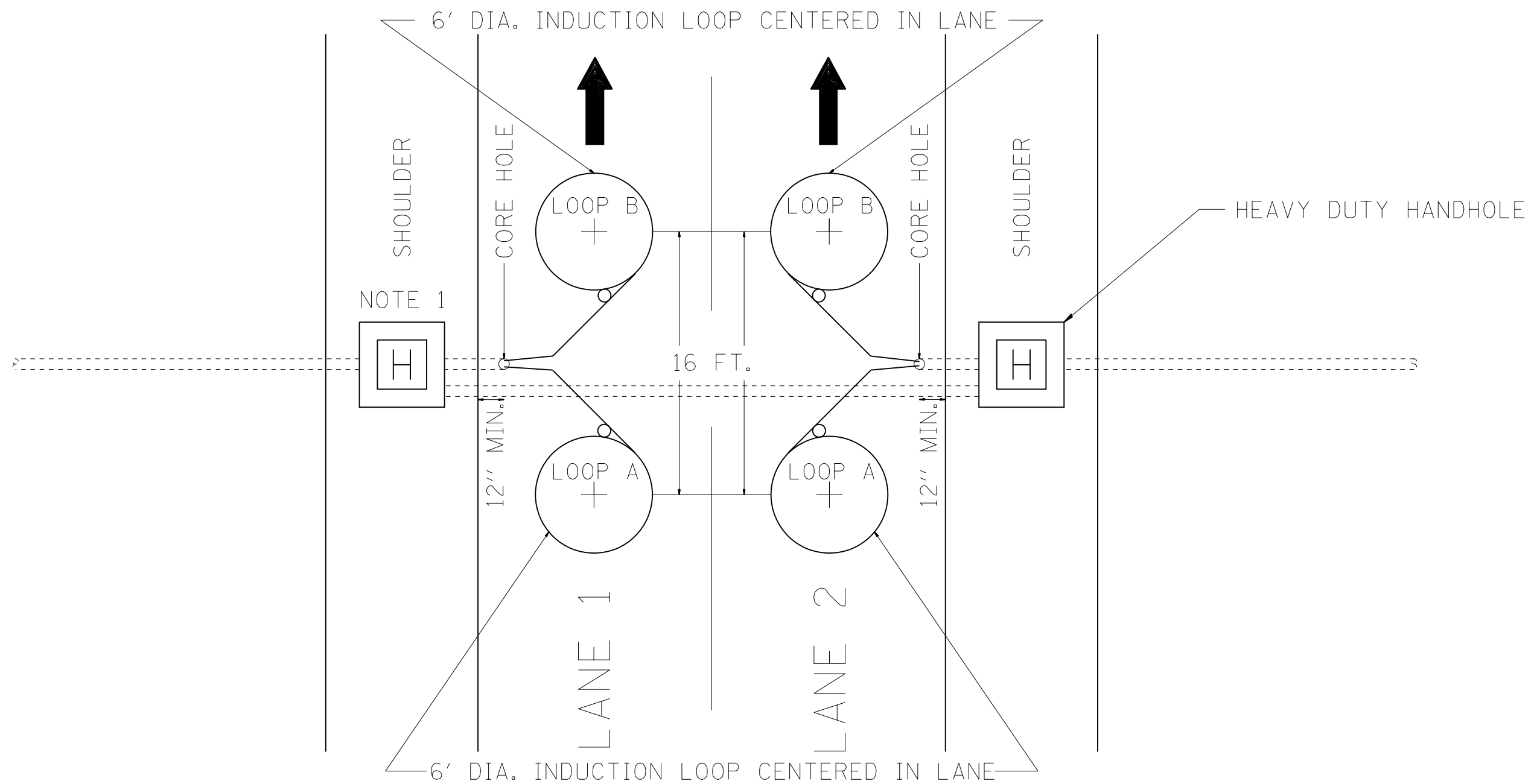
USER NAME = qarutnm	DESIGNED -	REVISED -
	DRAWN -	REVISED -
PLOT SCALE = 100.0000 ' / in.	CHECKED -	REVISED -
PLOT DATE = 2/7/2020	DATE -	REVISED -

STATE OF ILLINOIS
DEPARTMENT OF TRANSPORTATION
 TRAFFIC SYSTEMS CENTER

DIVE HOLE DUCT SYSTEM

SCALE: SHEET OF SHEETS STA. TO STA.

F.A.I. RTE.	SECTION	COUNTY	TOTAL SHEETS	SHEET NO.
55	2019-181-PP	WILL	26	18
CONTRACT NO. 62K54				
FED. ROAD DIST. NO.	ILLINOIS	FED. AID PROJECT		



NOTE 1: IF HDHH NOT POSSIBLE THEN LANE 1 LOOPS USE SAME CORE HOLE AS LANE 2 LOOPS. IN THE OTHER DIRECTION, LANE 2 LOOPS WILL USE SAME CORE HOLE AS LANE 1 LOOPS.

MODEL: Default
FILE: Model: Traffic Systems Center\Projects\DOT\Office\Drawings\1\Projects\134820\CADD\Drawings\134820-sh-detailed.dgn

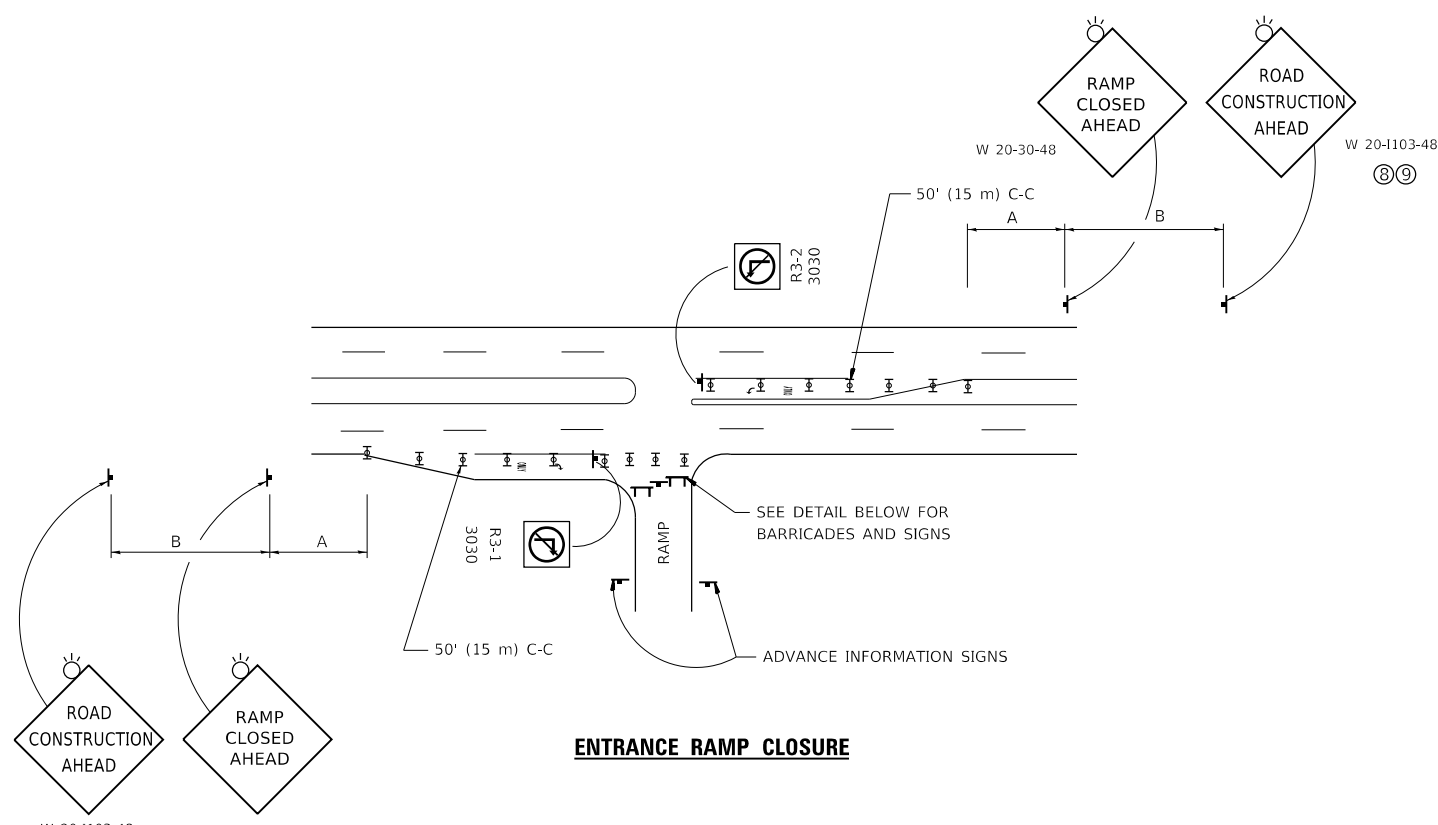
USER NAME = qarutnm	DESIGNED -	REVISED -
	DRAWN -	REVISED -
PLOT SCALE = 100.0000' / in.	CHECKED -	REVISED -
PLOT DATE = 2/7/2020	DATE -	REVISED -

STATE OF ILLINOIS
DEPARTMENT OF TRANSPORTATION
TRAFFIC SYSTEMS CENTER

TRAFFIC SURVEILLANCE
2 LANE SPEED, COUNT, CLASSIFICATION STATION

SCALE: SHEET OF SHEETS STA. TO STA.

F.A.I. RTE.	SECTION	COUNTY	TOTAL SHEETS	SHEET NO.
55	2019-181-PP	WILL	26	19
FED. ROAD DIST. NO. ILLINOIS FED. AID PROJECT			CONTRACT NO. 62K54	

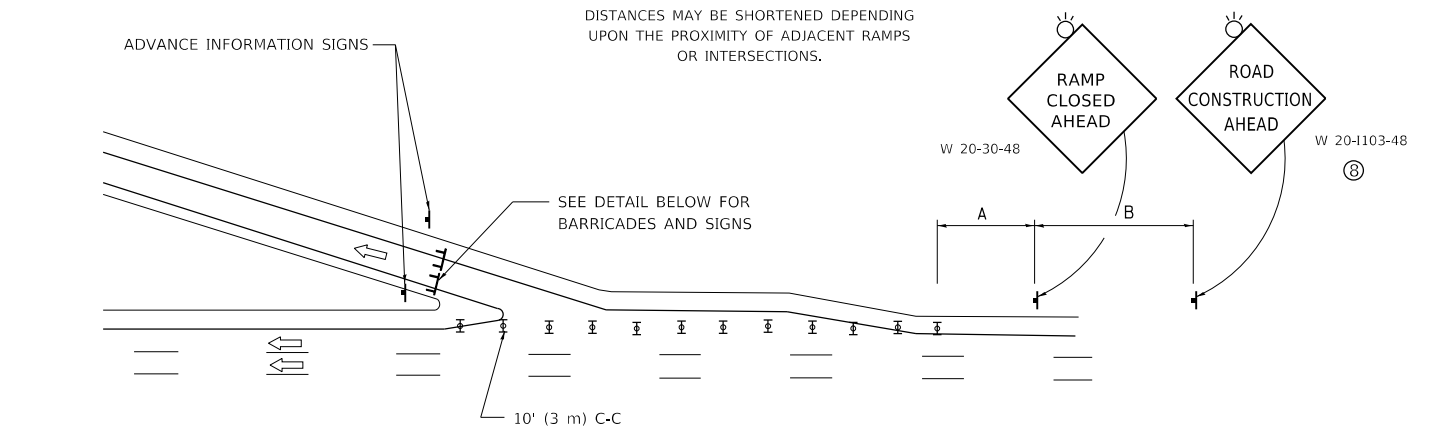


ENTRANCE RAMP CLOSURE

SIGN SPACING TABLE

FACILITY	DISTANCE BETWEEN SIGNS	
	A	B
EXPRESSWAY >24 HOURS	1000' (300 m)	1500' (450 m)
EXPRESSWAY ≤24 HOURS	500' (150 m)	500' (150 m)
ARTERIAL 55 MPH	500' (150 m)	500' (150 m)
ARTERIAL 50-45 MPH	350' (100 m)	350' (100 m)
ARTERIAL <45 MPH	200' (60 m)	200' (60 m)

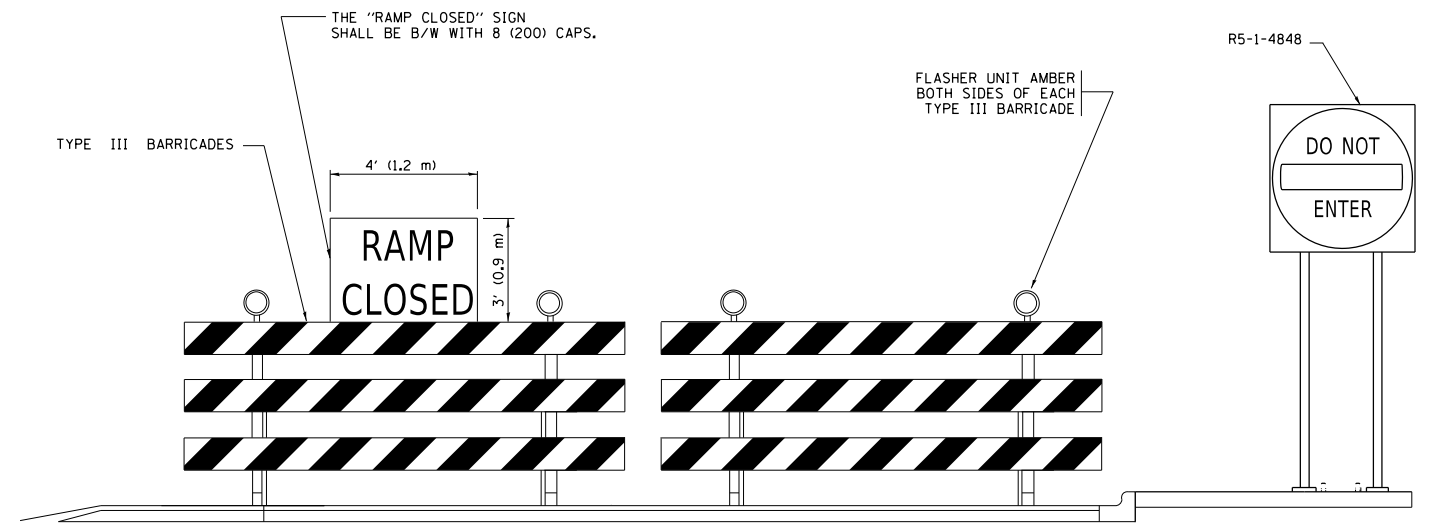
DISTANCES MAY BE SHORTENED DEPENDING UPON THE PROXIMITY OF ADJACENT RAMPS OR INTERSECTIONS.



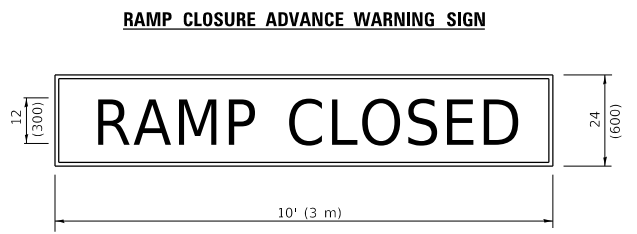
EXIT RAMP CLOSURE

SYMBOLS

- ⊥ TYPE II BARRICADE OR DRUM
- ▬ TYPE III BARRICADE WITH 2 FLASHING LIGHTS



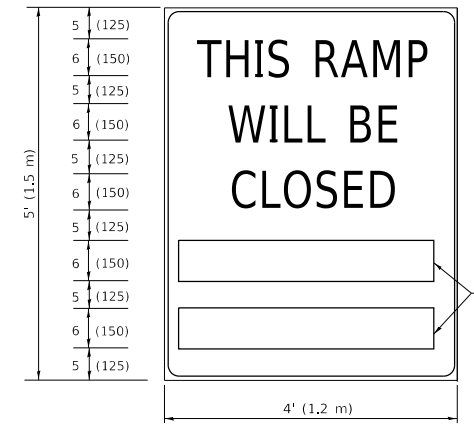
DETAIL FOR REQUIRED BARRICADES & SIGNS



RAMP CLOSURE ADVANCE WARNING SIGN

BLACK LEGEND ON ORANGE BACKGROUND MOUNTED DIAGONALLY
E MOD FONT
1 (25) BORDER

THESE SIGNS ARE REQUIRED ON ALL THE EXIT GUIDE SIGNS FOR EXIT RAMPS THAT WILL BE CLOSED FOR MORE THAN FOUR (4) CONSECUTIVE DAYS.



RAMP CLOSURE ADVANCE INFORMATION SIGN

BLACK LEGEND ON WHITE BACKGROUND
½ (12) BORDER
E MOD FONT

THESE BLANK AREAS SHALL BE FILLED WITH THE DATES AND THE TIME THAT THE RAMP WILL BE CLOSED.

THESE SIGNS ARE REQUIRED ON BOTH SIDES OF THE RAMP, MINIMUM OF 1 WEEK IN ADVANCE OF THE CLOSURE.
THESE SIGNS SHALL BE FABRICATED AND PAID FOR ACCORDING TO THE TEMPORARY INFORMATION SIGNING SPECIAL PROVISION

GENERAL NOTES:

- ① CONES MAY BE SUBSTITUTED FOR DRUMS OR TYPE II BARRICADES DURING DAY OPERATIONS. CONES SHALL BE A MINIMUM OF 28 (700) HIGH.
- ② VERTICAL BARRICADES SHALL NOT BE USED FOR RAMP CLOSURES.
- ③ A FLAGGER SHALL BE POSITIONED AT EACH CLOSED RAMP THAT IS OPEN TO CONSTRUCTION VEHICLES, PRECEDED BY A W20-7 FLAGGER WARNING SIGN.
- ④ ALL ROUTE MARKERS AND TRAILBLAZER ASSEMBLIES WHICH DIRECT MOTORISTS TO A CLOSED ENTRANCE RAMP SHALL BE COVERED WHEN THE RAMP IS CLOSED FOR MORE THAN FOUR (4) DAYS.
- ⑤ THE SIGNING AND BARRICADING WHICH IS REQUIRED BY THIS DETAIL SHALL BE INCLUDED IN THE COST OF TRAFFIC CONTROL AND PROTECTION (EXPRESSWAYS).
- ⑥ AUTHORIZATION FROM THE DISTRICT'S BUREAU OF TRAFFIC IS REQUIRED FOR ALL RAMP CLOSURES.
- ⑦ THE RAMP CLOSURE ADVANCE INFORMATION SIGNS SHALL BE ERECTED IF THE CLOSURE TIME EXCEEDS TWENTY-FOUR (24) HOURS. ADDITIONAL ADVANCE WARNING SIGNS ON EXIT GUIDE SIGNING WILL BE REQUIRED FOR EXIT RAMP CLOSURES THAT EXCEED FOUR (4) DAYS IN LENGTH.
- ⑧ ROAD CONSTRUCTION AHEAD SIGNS MAY BE OMITTED WHEN THIS DETAIL IS USED IN CONJUNCTION WITH OTHER TRAFFIC CONTROL THAT ALREADY INCLUDES A ROAD CONSTRUCTION AHEAD SIGN.
- ⑨ ARTERIAL ROAD CONSTRUCTION AHEAD SIGNS SHALL BE INSTALLED ON THE LEFT SIDE OF TRAFFIC IF THE MEDIAN IS MORE THAN 10 FT WIDE.

ALL DIMENSIONS ARE IN INCHES (MILLIMETERS) UNLESS OTHERWISE SHOWN.

MODEL: Default
FILE: \\nashville.pva\pub\baronm.d\at\illinois.gov\PI\DOT\Documents\DOT - Offices\Dir\et - I\Projects\134820\CaddData\Design\DESIGN.dgn

USER NAME = qarutnm	DESIGNED - D.W.S.	REVISED - S.P.B._01-07
PLOT SCALE = 100.0000' / in.	CHECKED -	REVISED - S.P.B._12-09
PLOT DATE = 2/7/2020	DATE - 02-83	REVISED - M.D._06-13
		REVISED - M.D._01-18

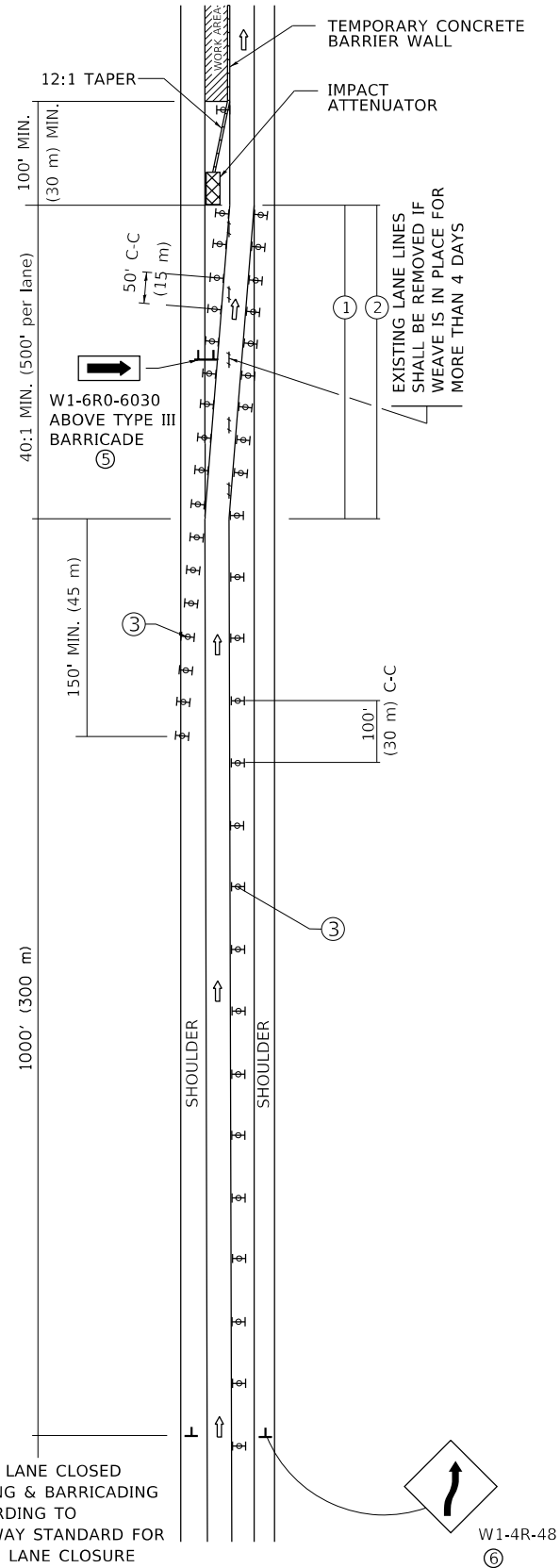
**STATE OF ILLINOIS
DEPARTMENT OF TRANSPORTATION**

**ENTRANCE_AND_EXIT_RAMP
CLOSURE_DETAILS**

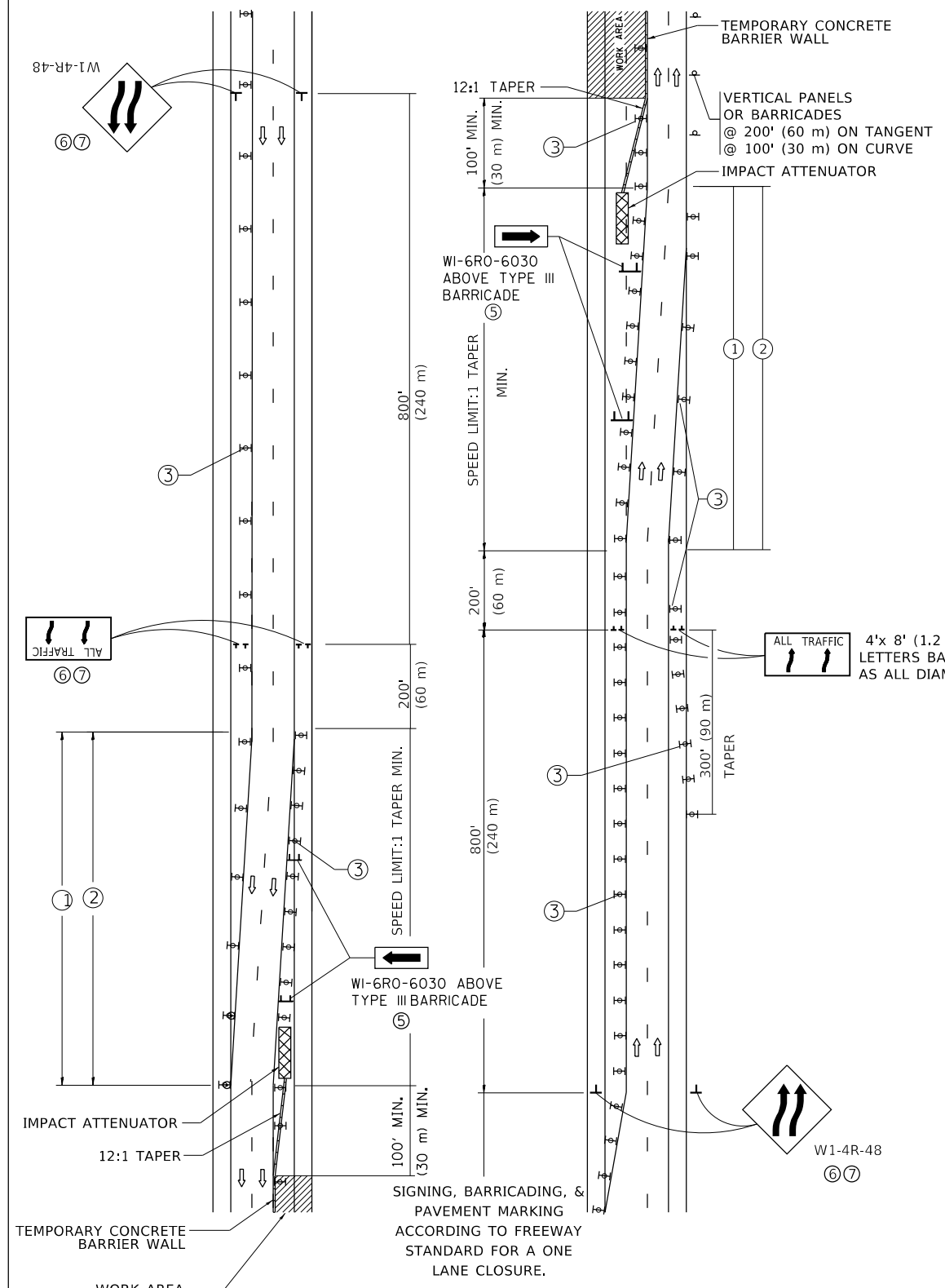
SCALE: NONE SHEET 1 OF 1 SHEETS STA. TO STA.

F.A.I. RTE.	SECTION	COUNTY	TOTAL SHEETS	SHEET NO.
I-55	2019-181-PP	WILL	26	20
TC-08			CONTRACT NO. 62K54	
ILLINOIS		FED. AID PROJECT		

SINGLE LANE WEAVE



MULTI-LANE WEAVE



GENERAL NOTES:

- EXISTING CONFLICTING PAVEMENT MARKING LINES SHALL BE REMOVED. PAVEMENT MARKING REMOVAL SHALL NOT BE REQUIRED FOR SINGLE LANE WEAVES UNDER 4 DAYS IN DURATION.
- CONTINUOUS REFLECTIVE TEMPORARY PAVEMENT MARKING TAPE SHALL BE PLACED THROUGHOUT THE TAPER AND FOR 300' (90 m) ALONG SIDE THE WORK AREA WHERE THE CLOSURE TIME IS GREATER THAN FOURTEEN DAYS. THE LEFT EDGE LINE SHALL BE YELLOW AND THE RIGHT EDGE LINE SHALL BE WHITE. FOR MULTI-LANE WEAVES LANE LINES SHALL BE 5 INCH, 10'-30' (3 m-9 m) SKIP DASH, WHITE.
- PLASTIC DRUMS WITH STEADY BURN LIGHTS AT 50' (15 m) C-C SPACING IN TAPERS AND 100' (30 m) C-C SPACING IN TANGENTS.
- ALL SIGNS SHALL BE POST MOUNTED IF THE CLOSURE TIME EXCEEDS FOUR DAYS.
- TYPE III BARRICADES MAY BE OMITTED FOR SINGLE-LANE WEAVES UNDER 24-HOURS IN DURATION. W1-6 SIGNS WILL STILL BE REQUIRED. IF THE WIDTH OF OFFSET IS LESS THAN 6' THEN THE TYPE III BARRICADE WITH ATTACHED ARROW SIGN PANEL CAN BE ELIMINATED IN THE TAPER AREAS.
- WHEN THE LENGTH OF THE SHIFTED SEGMENT (DISTANCE BETWEEN WEAVE POINTS) IS LESS THAN 1500', DOUBLE REVERSE CURVE SIGNS (W24-1) SHOULD BE USED INSTEAD OF THE REVERSE CURVE (W1-4) SIGNS. ARROWS ON THE 4'X8' "ALL TRAFFIC" SIGNS SHALL BE THE SAME SHAPE.
- THE NUMBER OF ARROWS ON THESE SIGNS SHALL MATCH THE NUMBER OF LANES OPEN TO TRAFFIC.

SYMBOLS

- DIRECTION OF TRAFFIC
- WORK AREA
- SIGN ON PORTABLE OR PERMANENT SUPPORT
- TYPE II BARRICADE OR DRUM WITH MONO-DIRECTIONAL STEADY BURNING LIGHT
- TEMPORARY CONCRETE BARRIER WALL
- IMPACT ATTENUATOR
- W1-4R-48
- W24-1-48

ALL DIMENSIONS ARE IN INCHES (MILLIMETERS) UNLESS OTHERWISE SHOWN

MODEL: Default
FILE: A:\a11c\p10\pub\barroom.dwg
PROJECT: I:\Projects\1348270\CADDData\Design\DESIGN.dwg

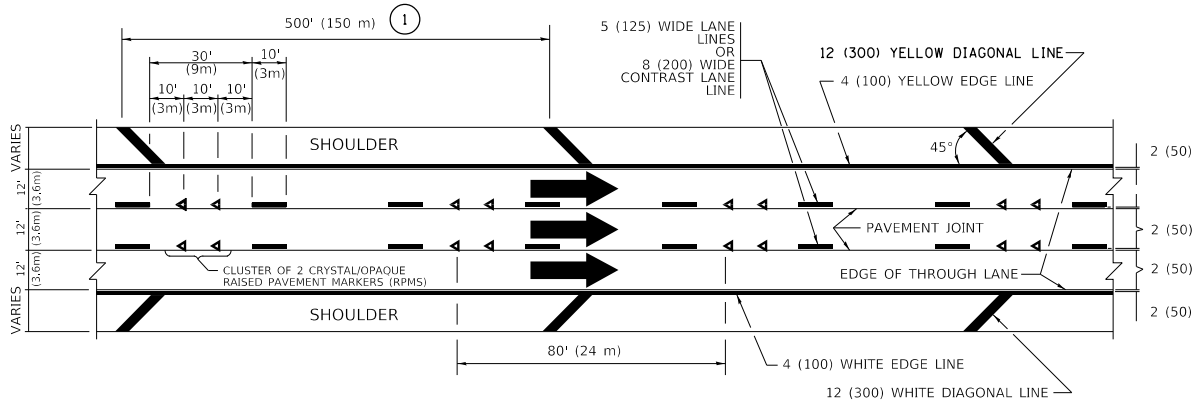
USER NAME = qarutnm	DESIGNED - D.W.S.	REVISED - J.A.F. 02-06
PLOT SCALE = 100.0000' / in.	CHECKED -	REVISED - S.P.B. 01-07
PLOT DATE = 2/7/2020	DATE - 02-87	REVISED - S.P.B. 12-09
		REVISED - M.D. 06-13

STATE OF ILLINOIS
DEPARTMENT OF TRANSPORTATION

TRAFFIC CONTROL DETAILS FOR
FREEWAY SINGLE & MULTI-LANE WEAVE

SCALE: NONE SHEET 1 OF 1 SHEETS STA. TO STA.

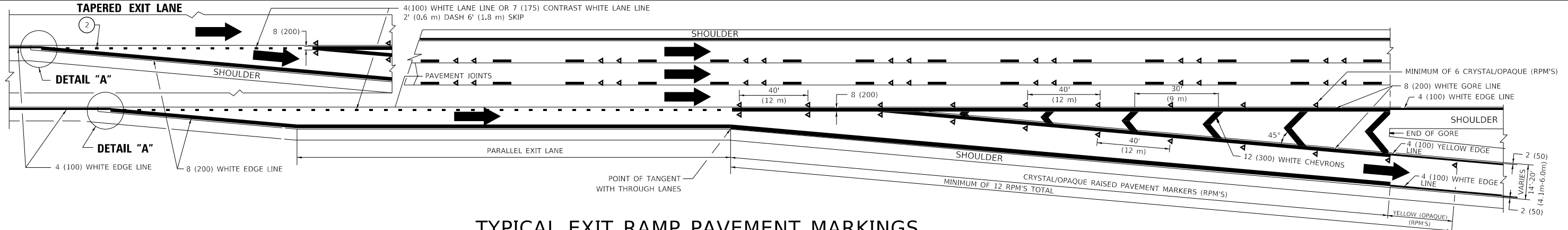
F.A.I. RTE.	SECTION	COUNTY	TOTAL SHEETS	SHEET NO.
I-55	2019-181-PP	WILL	26	21
TC-09		CONTRACT NO. 62K54		
ILLINOIS FED. AID PROJECT				



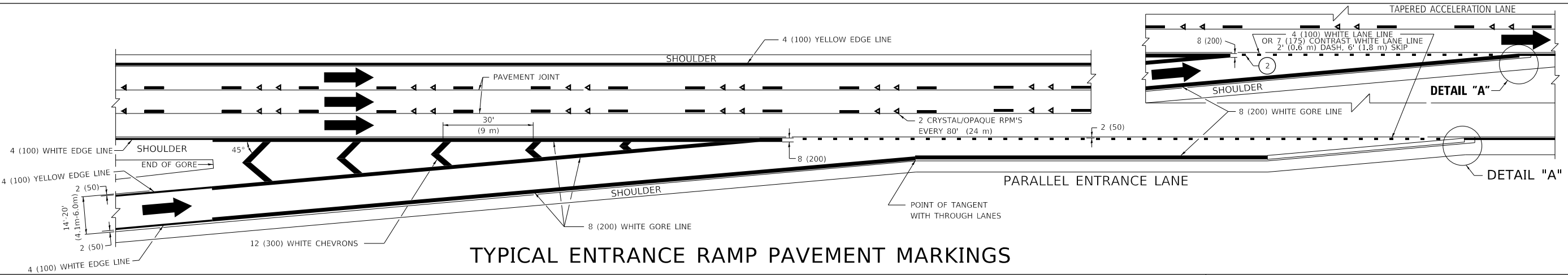
TYPICAL EDGE LINES & LANE LINES

PAVEMENT MARKING MATERIALS

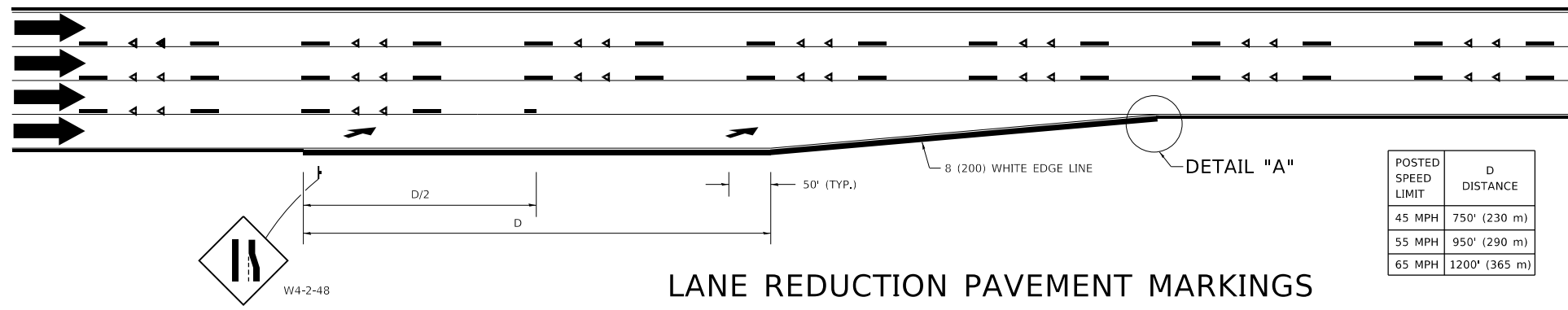
1. THERMOPLASTIC PAVEMENT MARKING LINE SHALL BE USED FOR ALL EDGE LINES, GORE LINES, AND DIAGONAL LINES ON HMA PAVEMENTS.
2. POLYUREA OR MODIFIED URETHANE PAVEMENT MARKING LINE SHALL BE USED FOR ALL EDGE LINES, GORE LINES, AND DIAGONAL LINES ON PCC PAVEMENTS.
3. PREFORMED PLASTIC PAVEMENT MARKING LINE TYPE B, INLAID OR GROOVE IN, SHALL BE USED FOR ALL LANE LINES ON HMA PAVEMENTS.
4. CONTRAST PREFORMED PLASTIC PAVEMENT MARKING LINE TYPE B, GROOVE IN, SHALL BE USED FOR ALL LANE LINES ON PCC PAVEMENT.



TYPICAL EXIT RAMP PAVEMENT MARKINGS

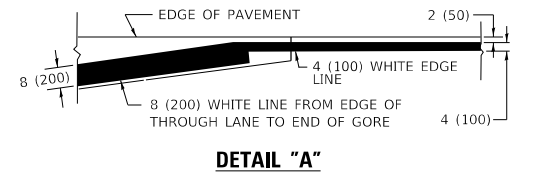


TYPICAL ENTRANCE RAMP PAVEMENT MARKINGS



LANE REDUCTION PAVEMENT MARKINGS

POSTED SPEED LIMIT	D DISTANCE
45 MPH	750' (230 m)
55 MPH	950' (290 m)
65 MPH	1200' (365 m)



- NOTES:**
- 1 THE DIAGONAL LINES SHALL BE SPACED AT 40' (12 m) C-C ACROSS ALL STRUCTURES WHICH ARE 500' (150 m) OR LESS IN LENGTH. THE DIAGONAL LINES ARE NOT REQUIRED ON SHOULDERS WHICH ARE 6' (1.8 m) OR LESS IN WIDTH.
 - 2 4" (2' DASH, 6' SKIP) MARKING ON TAPERED ENTRANCE AND EXIT RAMP SHALL BE OMITTED ON TANGENT SECTIONS.

MODEL: Default FILE: Multi-Lane-Freeway-Pavement-Markings-Details-1-Project.dwg PROJECT: I-55/2019-181-PP CONTRACT: 62K54

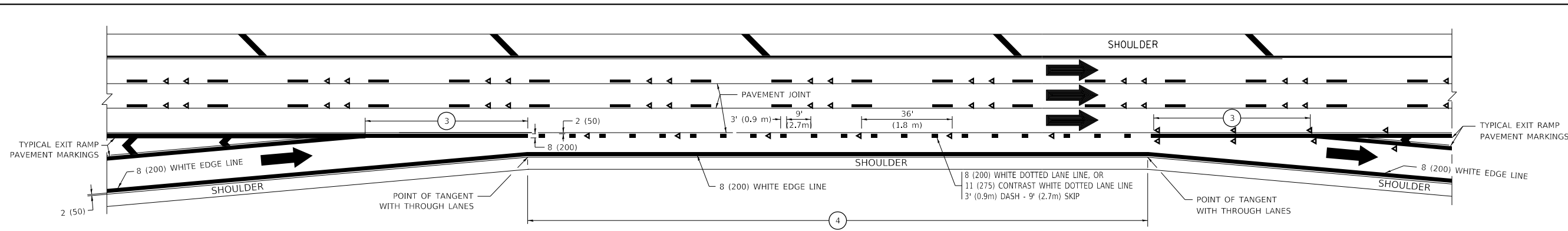
USER NAME = qarutnm	DESIGNED - D.W.S.	REVISED - S.P.B. 01-07
PLOT SCALE = 100.0000' / in.	CHECKED -	REVISED - S.P.B. 01-10
PLOT DATE = 2/7/2020	DATE - 01-90	REVISED - M.D. 05-13
		REVISED - M.D. 09-17

STATE OF ILLINOIS
DEPARTMENT OF TRANSPORTATION

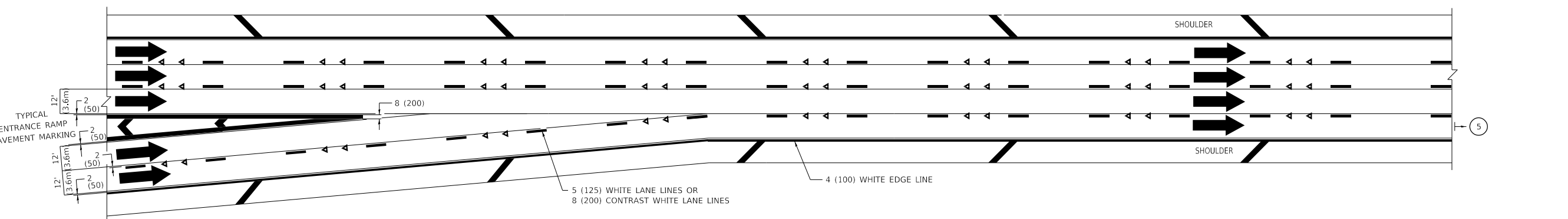
MULTI-LANE FREEWAY
PAVEMENT MARKING DETAILS

SCALE: NONE SHEET 1 OF 2 SHEETS STA. TO STA.

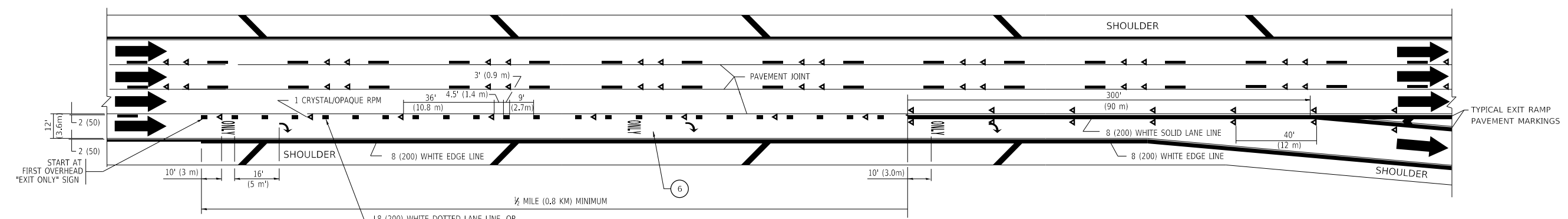
F.A.I. RTE.	SECTION	COUNTY	TOTAL SHEETS	SHEET NO.
I-55	2019-181-PP	WILL	26	22
TC-12		CONTRACT NO. 62K54		
ILLINOIS FED. AID PROJECT				



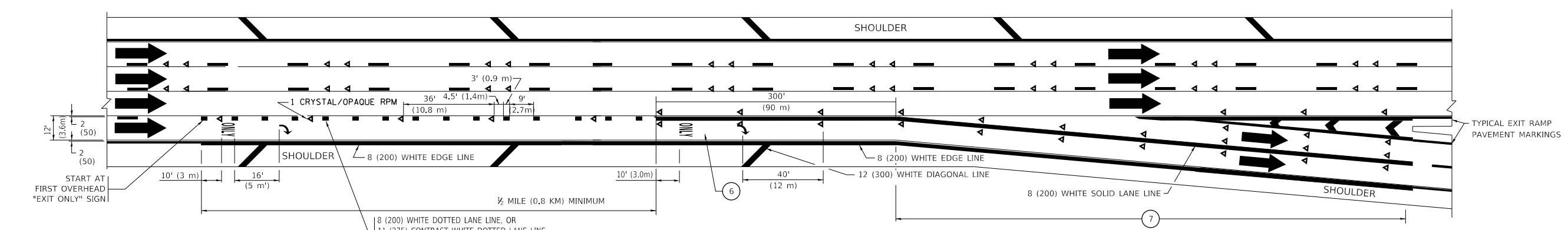
AUXILIARY LANE MARKINGS



TWO LANE ENTRANCE RAMP WITH MERGE MARKINGS



EXIT ONLY LANE MARKINGS



EXIT ONLY WITH OPTION LANE MARKINGS

- NOTES:**
- 3 OMIT WHEN LENGTH OF AUXILIARY LANE IS LESS THAN 500' (150 m).
 - 4 8-INCH WIDE DOTTED LANE LINE MARKINGS SHALL BE USED WHEN THE LENGTH OF THE AUXILIARY LANE IS 2 MILES OR LESS.
 - 5 FOR TWO-LANE ENTRANCE RAMP, IF RIGHT LANE ENDS, USE TYPICAL ENTRANCE RAMP PAVEMENT MARKINGS.
 - 6 ONLY AND ARROWS EQUALLY SPACED, 500' (150 m) MAXIMUM SPACING. FULL SIZE LETTERS AND ARROW SHALL BE USED.
 - 7 CONTINUE 8" SOLID LANE LINE THROUGH EXIT TO END OF PAVED GORE.

MODEL: Default
 FILE: \\p1banc001\pub\p1banc001\p1banc001\DOT\Documents\DOT - Offices\Illinois\134820\CADD\Design\Design\DESIGN.dgn

USER NAME = qarutnm	DESIGNED - D.W.S.	REVISED - J.A.F. 02-06
	DRAWN -	REVISED - S.P.B. 01-07
PLOT SCALE = 100.0000' / in.	CHECKED -	REVISED - S.P.B. 01-10
PLOT DATE = 2/7/2020	DATE - 01-90	REVISED - M.D. 09-17

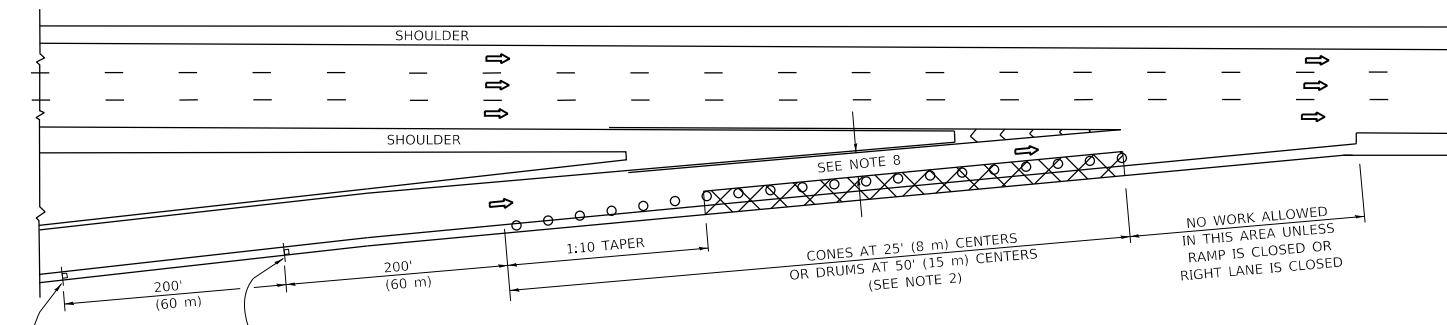
**STATE OF ILLINOIS
 DEPARTMENT OF TRANSPORTATION**

**MULTI-LANE FREEWAY
 PAVEMENT MARKING DETAILS**

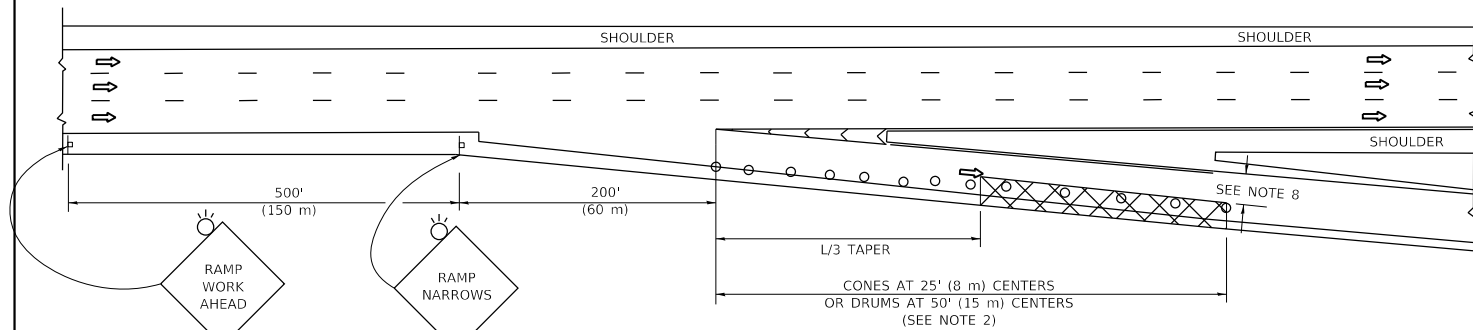
SCALE: NONE SHEET 1 OF 2 SHEETS STA. TO STA.

F.A.I. RTE.	SECTION	COUNTY	TOTAL SHEETS	SHEET NO.
I-55	2019-181-PP	WILL	26	23
TC-12		CONTRACT NO. 62K54		
		ILLINOIS	FED. AID PROJECT	

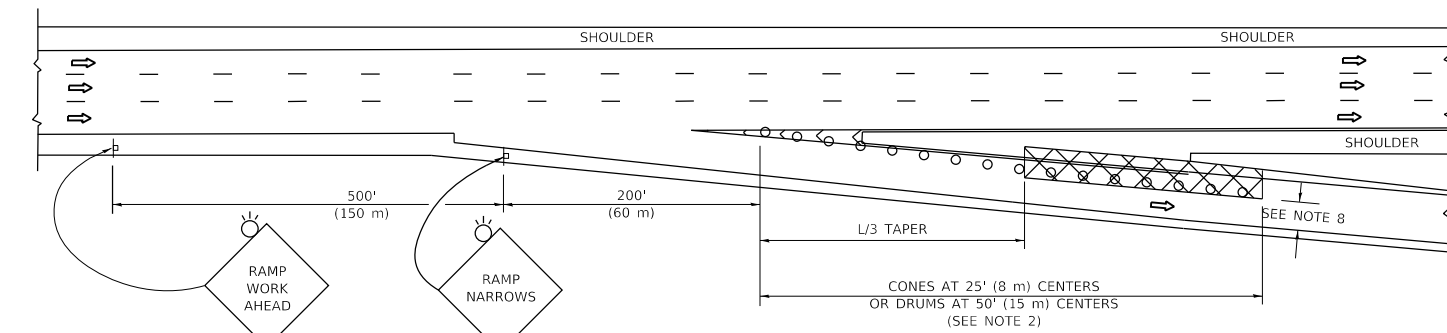
PARTIAL RAMP CLOSURE DETAILS



TYPICAL ENTRANCE RAMP



TYPICAL EXIT RAMP



TYPICAL EXIT RAMP

SYMBOLS

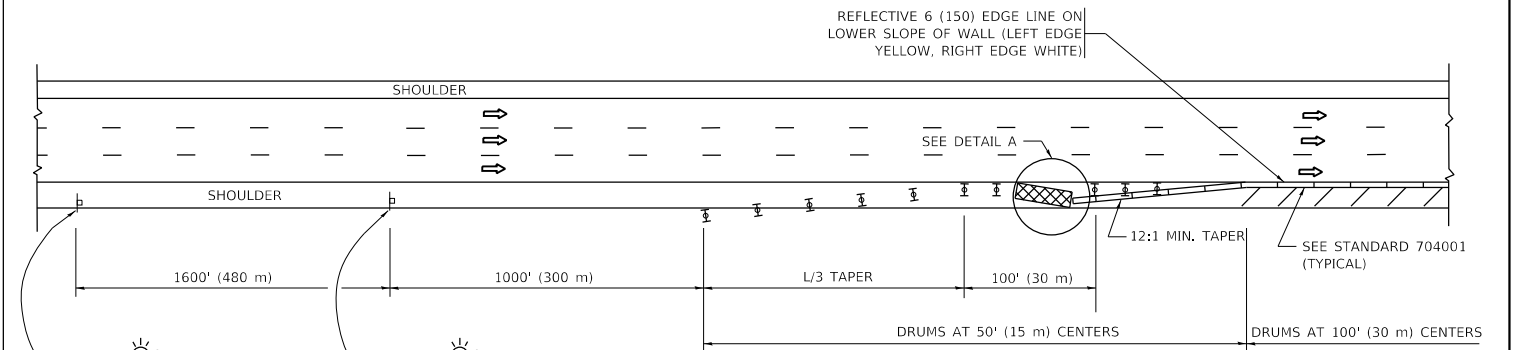
- ACTIVE WORK AREA
- SIGN ON PORTABLE OR PERMANENT SUPPORT
- FLAGGER WITH CONTROL SIGN
- TYPE II BARRICADE OR DRUM
- CONE, DRUM OR BARRICADE
- IMPACT ATTENUATOR OF TYPE AND TEST LEVEL SPECIFIED

GENERAL NOTES:

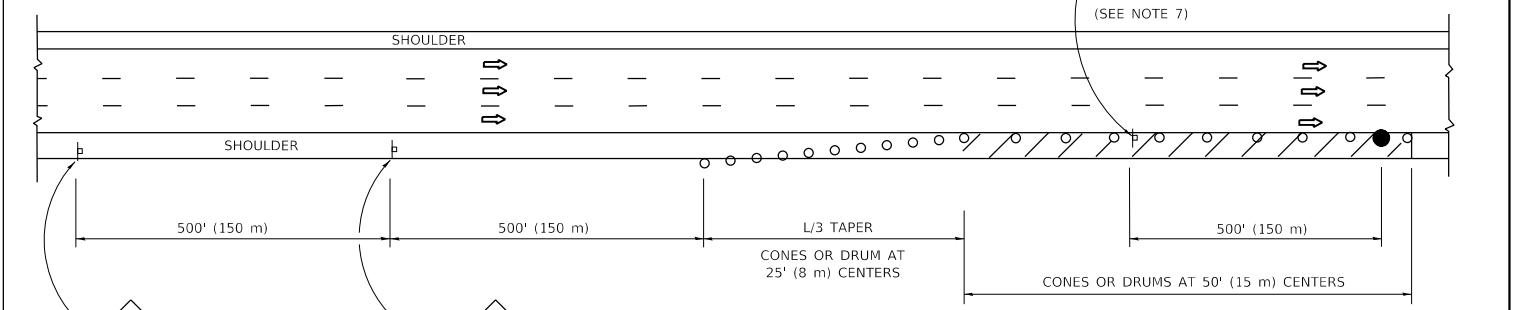
1. THE "L" DISTANCE EQUALS:

SPEED LIMIT	FORMULAS
45 mph (80 km/h)	METRIC ENGLISH
OR GREATER:	$L=0.65(WXS)$ $L=(WXS)$
	W = WIDTH OF OFFSET IN FEET (METERS)
	S = NORMAL POSTED SPEED MPH (KM/H)
2. TYPE II BARRICADES OR DRUMS ARE REQUIRED FOR ALL NIGHTTIME CLOSURES. TYPE II BARRICADES OR DRUMS WITH MONODIRECTIONAL STEADY BURN LIGHTS ARE REQUIRED FOR DELINEATING OBSTACLES, EXCAVATIONS, OR HAZARDS EXCEEDING 100 FT (30m) IN LENGTH AT NIGHT.
3. ALL SIGNS SHALL BE POST MOUNTED IF THE CLOSURE TIME EXCEEDS FOUR DAYS.
4. FLASHING LIGHTS SHALL BE USED DURING THE HOURS OF DARKNESS AND SHALL BE INSTALLED ABOVE THE FIRST TWO SETS OF SIGNS.

SHOULDER CLOSURE DETAILS

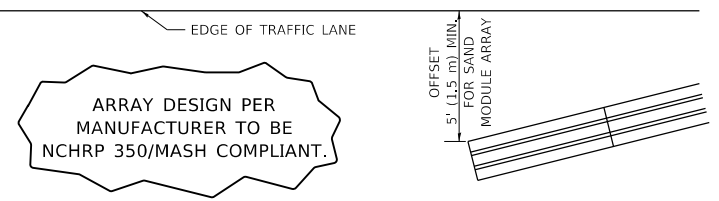


PERMANENT SHOULDER CLOSURE



DAYTIME SHOULDER CLOSURE

THIS DETAIL IS USED WHERE:
 1. VEHICLES, EQUIPMENT, WORKERS OR THEIR ACTIVITIES ENCROACH IN AN AREA CLOSER THAN 15' (4.5 m) TO THE EDGE OF PAVEMENT FOR A PERIOD IN EXCESS OF 15 MINUTES.



**DETAIL "A"
IMPACT ATTENUATOR, TEMPORARY
(SEE NOTE 5)**

5. THE IMPACT ATTENUATOR, TEMPORARY IS NOT REQUIRED WHEN THE TEMPORARY CONCRETE BARRIER WALL IS PROTECTED BY OR IS TIED INTO THE EXISTING GUARDRAIL. IF OFFSET IS LESS THAN 5 FEET USE NARROW USE TYPE DEVICE TO MEET NCHRP350/MASH.
6. AUTHORIZATION FROM THE DISTRICT'S BUREAU OF TRAFFIC IS REQUIRED FOR ALL FREEWAY CLOSURES.
7. THE FLAGGER AND FLAGGER SIGN ARE REQUIRED AT THE ABOVE WORK SITES WHEN:
 - a. FOUR OR MORE WORK VEHICLES ENTER THE TRAFFIC LANES IN A ONE HOUR PERIOD.
 - b. THE WORK AVTTIVITY REQUIRES FREQUENT ENCROACHMENT INTO THE LANE OPEN TO TRAFFIC.
 THE FLAGGER SHALL BE STATIONED APPROXIMATELY 100' (30 m) TO 200' (60 m) IN ADVANCE OF THE WORKERS.
8. 12' MIN. WIDTH TANGENT SECTION
16' MIN. WIDTH CURVE SECTION.

ALL DIMENSIONS ARE IN INCHES (MILLIMETERS) UNLESS OTHERWISE SHOWN.

MODEL: Default
FILE: \\nctdpc-prod\pub\aroom.d\at\illndk.gov\PIWDOT\Documents\DOT-Office\Dist\ctc-1\Projects\134820\CADD\ata\Design\DES.dgn

USER NAME = qarutnm	DESIGNED -	REVISED - S.P.B. 01-07
	DRAWN - D.W.S.	REVISED - S.P.B. 12-09
PLOT SCALE = 100.0000' / in.	CHECKED -	REVISED - M.D. 06-13
PLOT DATE = 2/7/2020	DATE - 11-96	REVISED - M.D. 01-18

**STATE OF ILLINOIS
DEPARTMENT OF TRANSPORTATION**

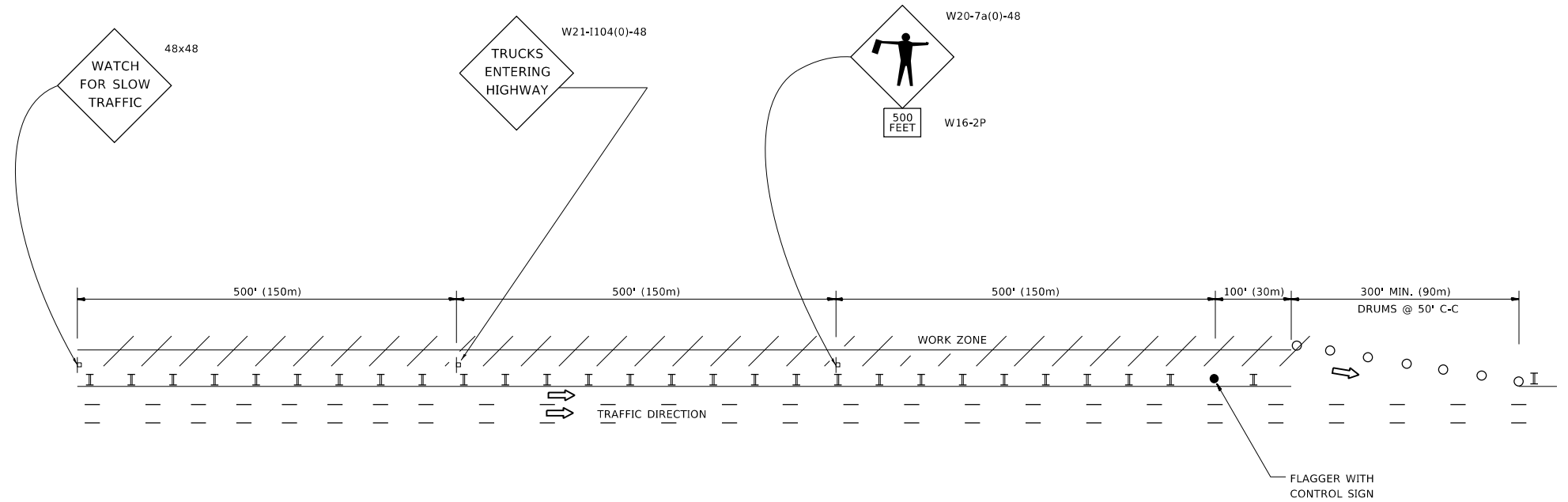
**TRAFFIC CONTROL DETAILS FOR FREEWAY
SHOULDER CLOSURES AND PARTIAL RAMP CLOSURES**

SCALE: NONE SHEET 1 OF 1 SHEETS STA. TO STA.

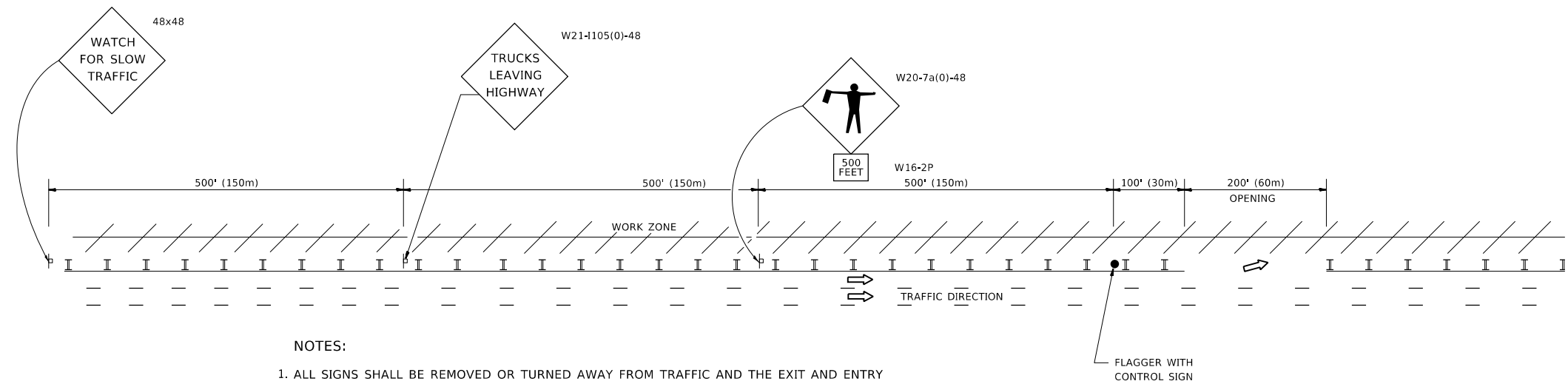
F.A.I. RTE.	SECTION	COUNTY	TOTAL SHEETS	SHEET NO.
I-55	2019-181-PP	WILL	26	24
TC-17		CONTRACT NO. 62K54		
ILLINOIS FED. AID PROJECT				

SIGNING FOR FLAGGING OPERATIONS AT WORK ZONE OPENINGS

WORK ZONE EXIT OPENING



WORK ZONE ENTRY OPENING



NOTES:

1. ALL SIGNS SHALL BE REMOVED OR TURNED AWAY FROM TRAFFIC AND THE EXIT AND ENTRY OPENINGS SHALL BE CLOSED WHEN THE FLAGGING OPERATION CEASES. NON OPERATING EQUIPMENT SHALL COMPLY WITH ARTICLE 701.11
2. WORK ZONE OPENINGS SHALL BE A MINIMUM OF ONE HALF MILE APART AND A MINIMUM OF ONE QUARTER MILE FROM ALL ENTRANCE AND EXIT RAMP.
3. EXITING THE WORK ZONE AT ANY PLACE OTHER THAN AT A WORK ZONE EXIT OPENING WILL BE PROHIBITED.
4. ALL VEHICLES SHALL ENTER THE WORK ZONE AT ENTRY OPENINGS, USING THEIR TURN SIGNALS TO WARN MOTORISTS
5. FLAGGERS SHALL NOT STOP TRAFFIC OR DIRECT TRAFFIC INTO AN ADJACENT LANE.

ALL DIMENSIONS ARE IN INCHES (MILLIMETERS) UNLESS OTHERWISE SHOWN

MODEL: Default
FILE: \\nas101.psw.ibm.com\data\illinois.gov\PIW\DOT\Documents\DOT_Offices\Illinois\1\Projects\134820\CADD\Design\Design\DESIGN.dgn

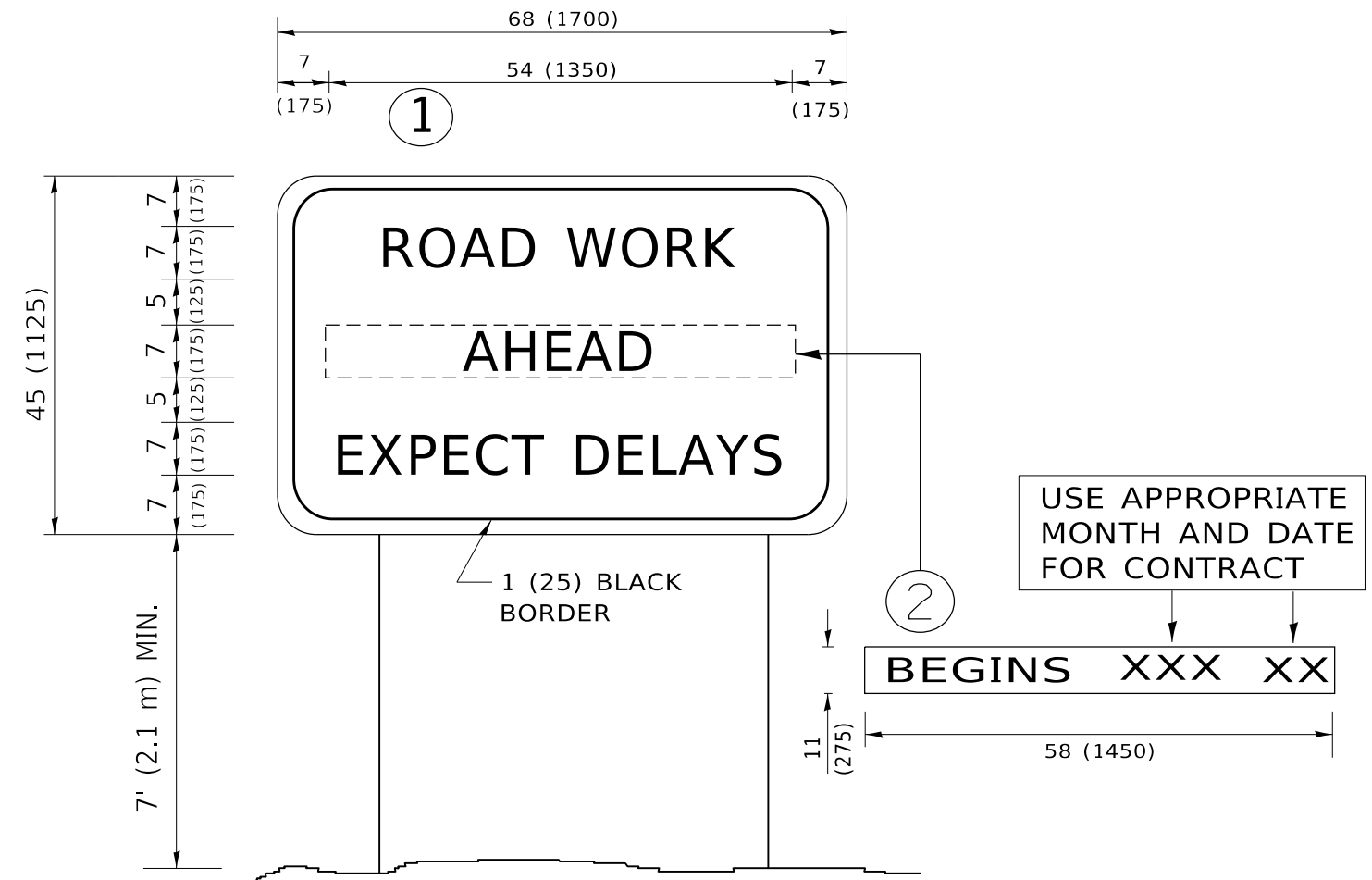
USER NAME = qarutnm	DESIGNED -	REVISED - J.A.F. 02-06
	DRAWN -	REVISED - S.P.B. 01-07
PLOT SCALE = 100,0000 ' / in.	CHECKED -	REVISED - S.P.B. 12-09
PLOT DATE = 2/7/2020	DATE -	REVISED - M.D.06-13

**STATE OF ILLINOIS
DEPARTMENT OF TRANSPORTATION**

**FREEWAY /EXPRESSWAY SIGNING FOR FLAGGING OPERATIONS
AT WORK ZONE OPENINGS ON FREEWAYS /EXPRESSWAYS**

SCALE: NONE SHEET 1 OF 1 SHEETS STA. TO STA.

F.A.I. RTE.	SECTION	COUNTY	TOTAL SHEETS	SHEET NO.
I-55	2019-181-PP	WILL	26	25
TC-18			CONTRACT NO. 62K54	
ILLINOIS FED. AID PROJECT				



NOTES:

1. USE BLACK LETTERING ON ORANGE BACKGROUND.
2. ERECT SIGNS IN ADVANCE OF THE LOCATION FOR THE "ROAD CONSTRUCTION AHEAD" SIGN AT LOCATIONS AS DIRECTED BY THE ENGINEER.
3. ERECT SIGN ① WITH INSTALLED PANEL ② ONE WEEK PRIOR TO THE START OF CONSTRUCTION.
4. REMOVE PANEL ② SOON AFTER THE START OF CONSTRUCTION.
5. SEE SPECIAL PROVISION FOR "TEMPORARY INFORMATION SIGNING" FOR ADDITIONAL INFORMATION.
6. ONE SIGN ASSEMBLY EQUALS 25.70 SQ. FT. (2.3 SQ. M.)
7. SHALL BE PAID FOR AS TEMPORARY INFORMATION SIGNING.

ALL DIMENSIONS ARE IN INCHES (MILLIMETERS) UNLESS OTHERWISE SHOWN.

MODEL: Default
 FILE: \\nas01c.psu.edu\lanroom\data\illinois.gov\RW\DOT\Documents\DOT_Offices\Dir\etec_1\Projects\134820\CADD\Design\Design\DRS54.dgn

USER NAME = qarutnm	DESIGNED -	REVISED - R. MIRS 09-15-97
	DRAWN -	REVISED - R. MIRS 12-11-97
PLOT SCALE = 100.0000 ' / in.	CHECKED -	REVISED - T. RAMMACHER 02-02-99
PLOT DATE = 2/7/2020	DATE -	REVISED - C. JUCIUS 01-31-07

**STATE OF ILLINOIS
DEPARTMENT OF TRANSPORTATION**

**ARTERIAL ROAD
INFORMATION SIGN**

SCALE: NONE SHEET 1 OF 1 SHEETS STA. TO STA.

F.A.I. RTE.	SECTION	COUNTY	TOTAL SHEETS	SHEET NO.
I-55	2019-181-PP	WILL	26	26
TC-22			CONTRACT NO. 62K54	
ILLINOIS FED. AID PROJECT				