

046

STATE OF ILLINOIS
DEPARTMENT OF TRANSPORTATION

FAI RTE	SECTION	COUNTY	TOTAL SHEETS	SHEET NO
39		WOODFORD	27	1
CONTRACT NO. 68F48				

D-94-038-20

INDEX OF SHEETS

- 1. COVER SHEET
- 2. GENERAL NOTES
- 3-4 SUMMARY OF QUANTITIES
- 5-27 PLAN SHEETS

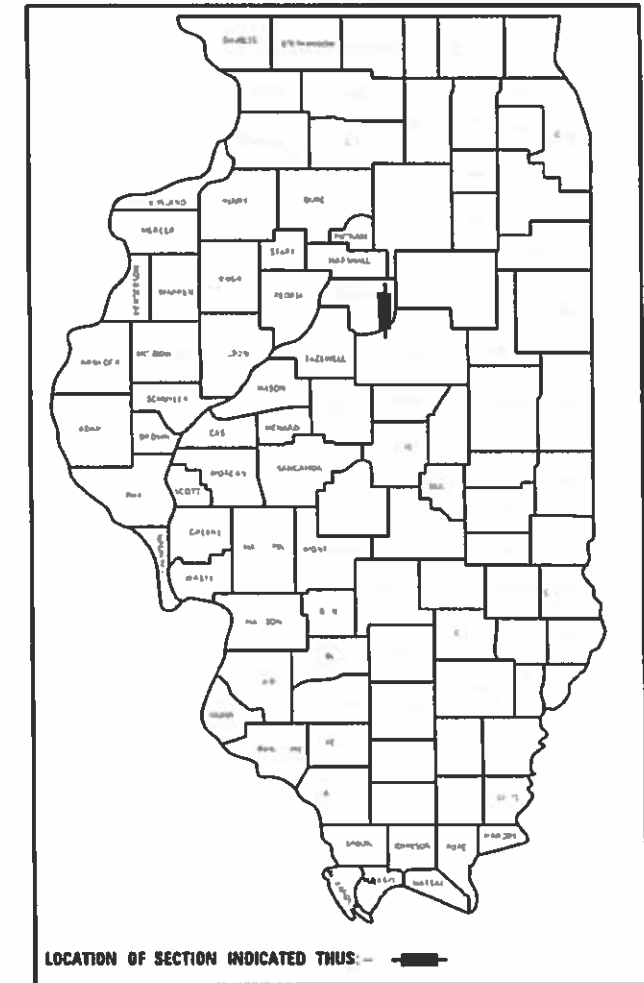
HIGHWAY STANDARDS

701001-02	701006-05
701101-05	701106-02
701201-05	701301-04
701400-09	701402-12
701451-05	701901-08
704001-08	

PROPOSED
HIGHWAY PLANS

I-39 (FAI 39)
SECTION 102[(2HVB)BR;HB-1;HB;HB-2]BP
PROJECT NHPP-M4QN(653)
DESCRIPTION BRIDGE PAINTING
WOODFORD COUNTY

C-94-058-20



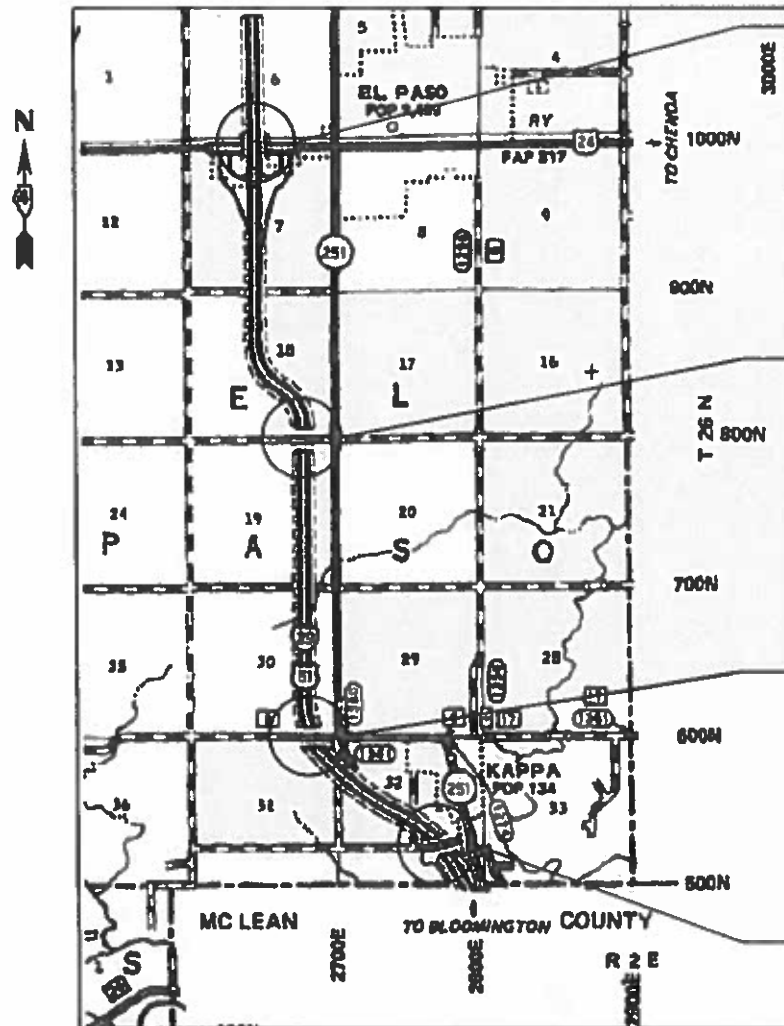
US 24
AADT
102-0058 & 102-0059 / AADT (2019)=8,400 SU=170 MU=525

I-39
AADT
102-0058 / AADT (2017)=9,250 SU=325 MU=3,397
102-0059 / AADT (2017)=9,250 SU=325 MU=3,397
102-0060 / AADT (2017)=18,500 SU=650 MU=5,200
102-0061 / AADT (2017)=18,500 SU=650 MU=5,200
102-0062 / AADT (2017)=18,500 SU=650 MU=5,200

J.U.L.I.E.
JOINT UTILITY LOCATION INFORMATION FOR EXCAVATION
1-800-892-0123
OR 811

PROJECT ENGINEER ELIAS ELDERZI (309)671-3482
PROJECT MANAGER MIKE LEWIS (309)671-3454

CONTRACT NO. 68F48 CATALOG NO. 036031-00D



#1 SN 102-0058
#2 SN 102-0059

#3 SN 102-0060

#4 SN 102-0061

#5 SN 102-0062

DESCRIPTION:
PAINTING OF STRUCTURES ALONG THE INTERSTATE 39
CORRIDOR IN WOODFORD COUNTY. SN 102-0058, 102-0059,
102-0060, 102-0061, AND 102-0062.

STATE OF ILLINOIS
DEPARTMENT OF TRANSPORTATION

SUBMITTED Jan 31 2020
Kensel A. Garnett RSD
REGIONAL ENGINEER

March 20 2020
E.A. Elk
ENGINEER OF DESIGN AND ENVIRONMENT

March 20 2020
James A. Orr
DIRECTOR OF HIGHWAYS PROJECT IMPLEMENTATION 13

PRINTED BY THE AUTHORITY
OF THE STATE OF ILLINOIS

SN 102-0059 NB I-39 OVER US 24

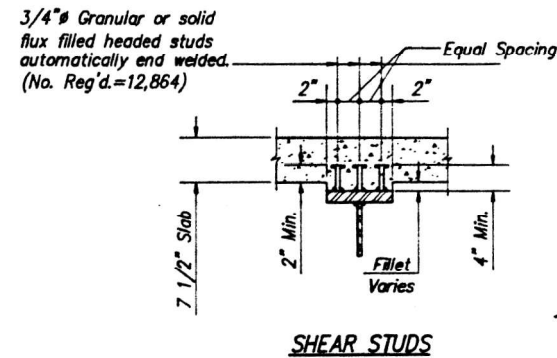
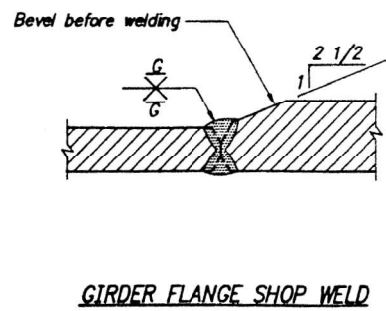
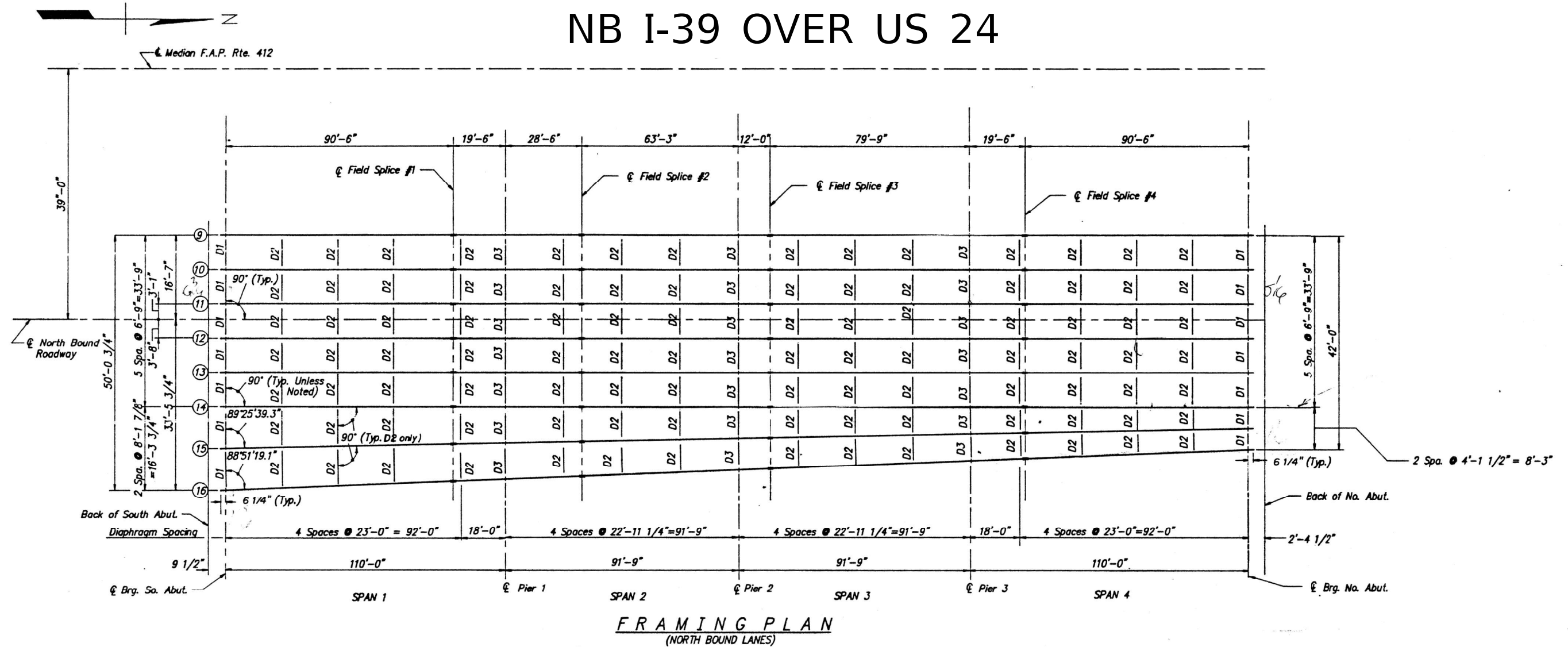


PLATE THICKNESS & DIMENSION TABLE											
Girder	"a"	"b"	"c"	"d"	"e"	"f"	"g"	"h"	"i"	"j"	"k"
#1							90'-6 7/16"	63'-3 3/8"	71'-9 3/8"	110'-0 7/16"	91'-9 3/8"
#2	1 1/4"	1 1/8"	7/8"	7/8"	1/2"	7/16"	90'-6 1/8"	63'-3 1/8"	71'-9 1/8"	110'-0 1/8"	91'-9 1/8"
#3							90'-6"	63'-3"	71'-9"	110'-0"	91'-9"
#4-#8	1"	1"	1"	1"		7/16"	90'-6"	63'-3"	71'-9"	110'-0"	91'-9"
#9-#13					1/2"	1/2"	90'-6"	63'-3"	71'-9"	110'-0"	91'-9"
#14							90'-6"	63'-3"	71'-9"	110'-0"	91'-9"
#15	1 1/4"	1 1/8"	7/8"	7/8"	1/2"	7/16"	90'-6 1/16"	63'-3 1/16"	71'-9 1/16"	110'-0 1/16"	91'-9 1/16"
#16							90'-6 1/4"	63'-3 1/4"	71'-9 1/4"	110'-0 1/4"	91'-9 1/4"

FOR INFORMATION ONLY

MODEL: Default; FILE NAME: p:\data\baronm.dwg; PLOT DATE: 1/3/2020; USER: recendezr; PROJECT: I-39 NB OVER US 24; SHEET: 7 OF 7

USER NAME = recendezr	DESIGNED -	REVISED -
DRAWN -	REVISOR -	
PLOT SCALE = 2,0000' / in.	CHECKED -	REVISOR -
PLOT DATE = 1/3/2020	DATE -	REVISOR -

STATE OF ILLINOIS
DEPARTMENT OF TRANSPORTATION

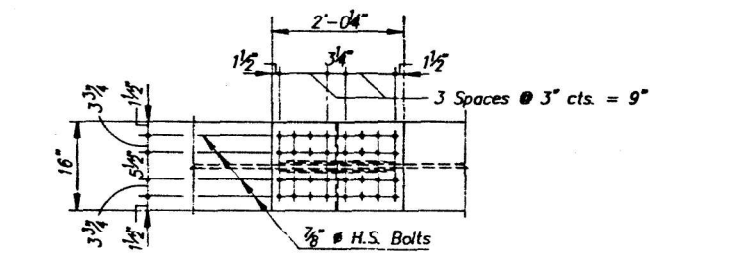
FRAMING VIEW

SCALE: SHEET OF SHEETS STA. TO STA.

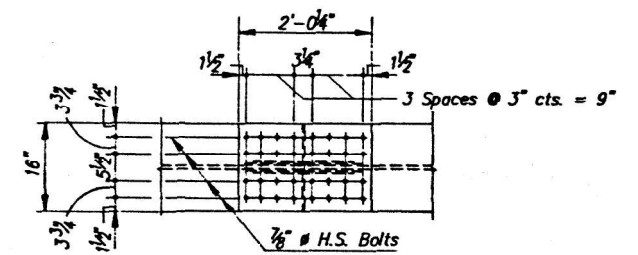
F.A.J. RTE. 39	SECTION *	COUNTY WOODFORD	TOTAL SHEETS 27	SHEET NO. 7
CONTRACT NO. 68F48			ILLINOIS FED. AID PROJECT	

*102[(2HVB)BR;HB-1;HB;HB-2]BP

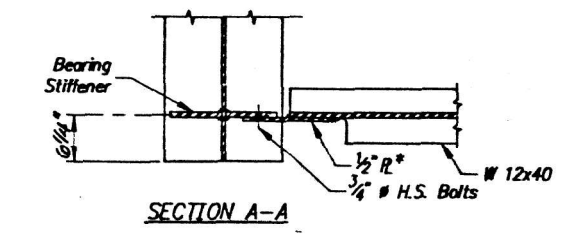
SN 102-0058 & 102-0059 I-39 OVER US 24



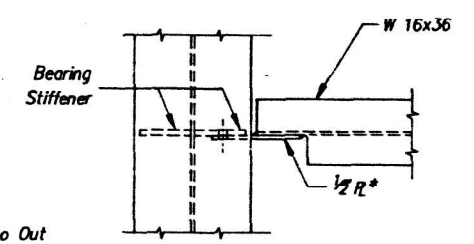
TOP FLANGE



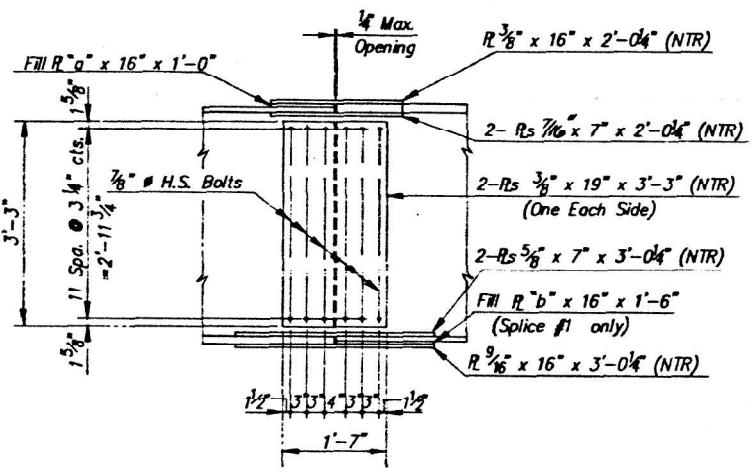
TOP FLANGE



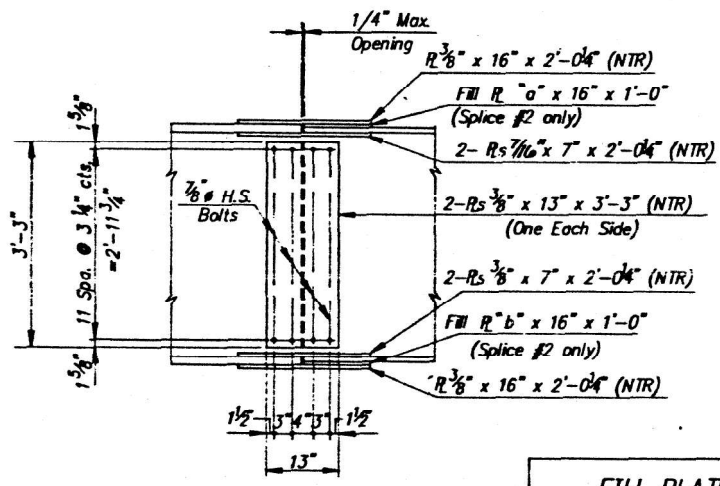
SECTION A-A



SECTION C-C

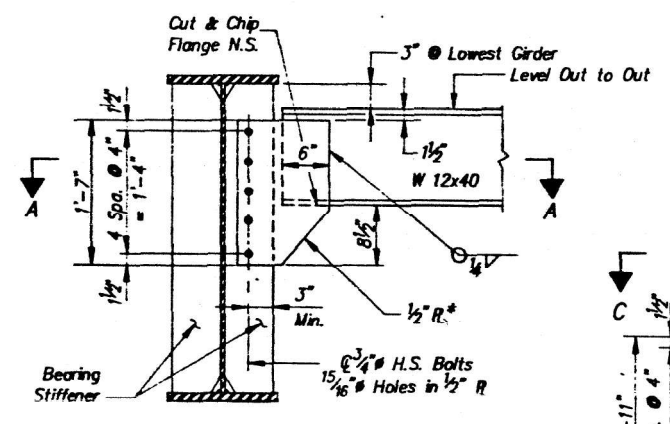


GIRDER ELEVATION
(Splices #1 & #4)

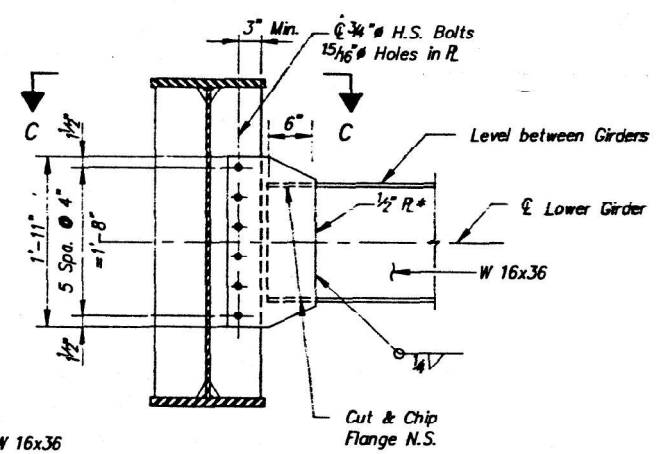


GIRDER ELEVATION
(Splices #2 & #3)

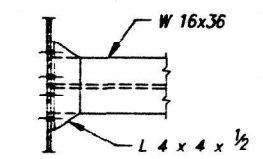
FILL PLATE THICKNESS TABLE						
Girder No.	Splice #1		Splice #2		Splice #4	
	a"	b"	a"	b"	a"	b"
1-3, 14-16	3/8"	1/8"	3/8"	3/8"	1/8"	-
4-13	1/4"	-	1/4"	1/4"	1/4"	-



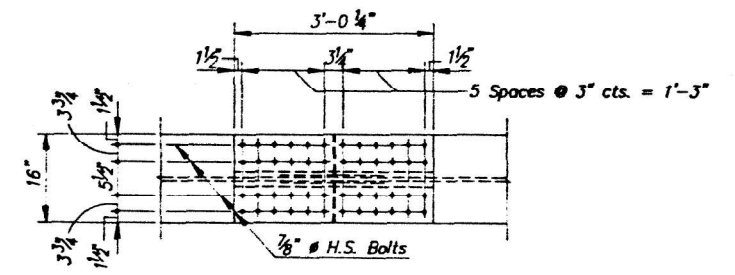
DIAPHRAGM D1
(28 Required)



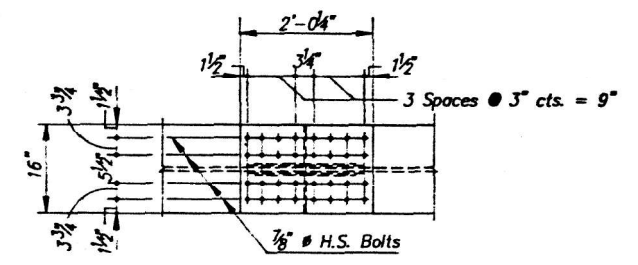
DIAPHRAGM D3
(42 Required)



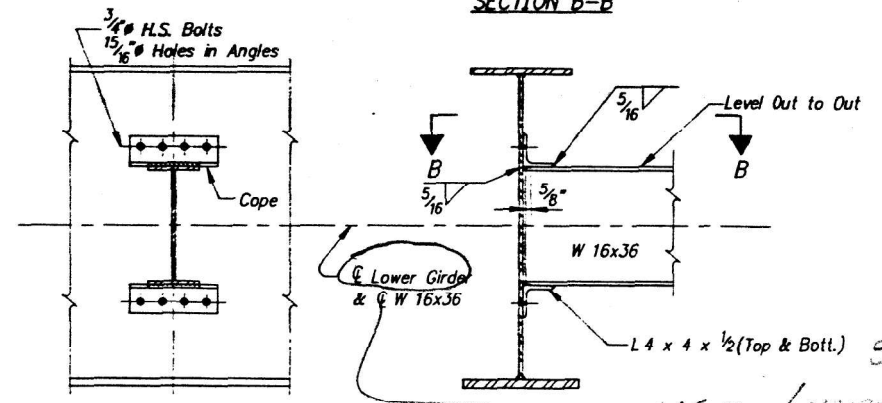
SECTION B-B



BOTTOM FLANGE



BOTTOM FLANGE



DIAPHRAGM D2
(196 Required)

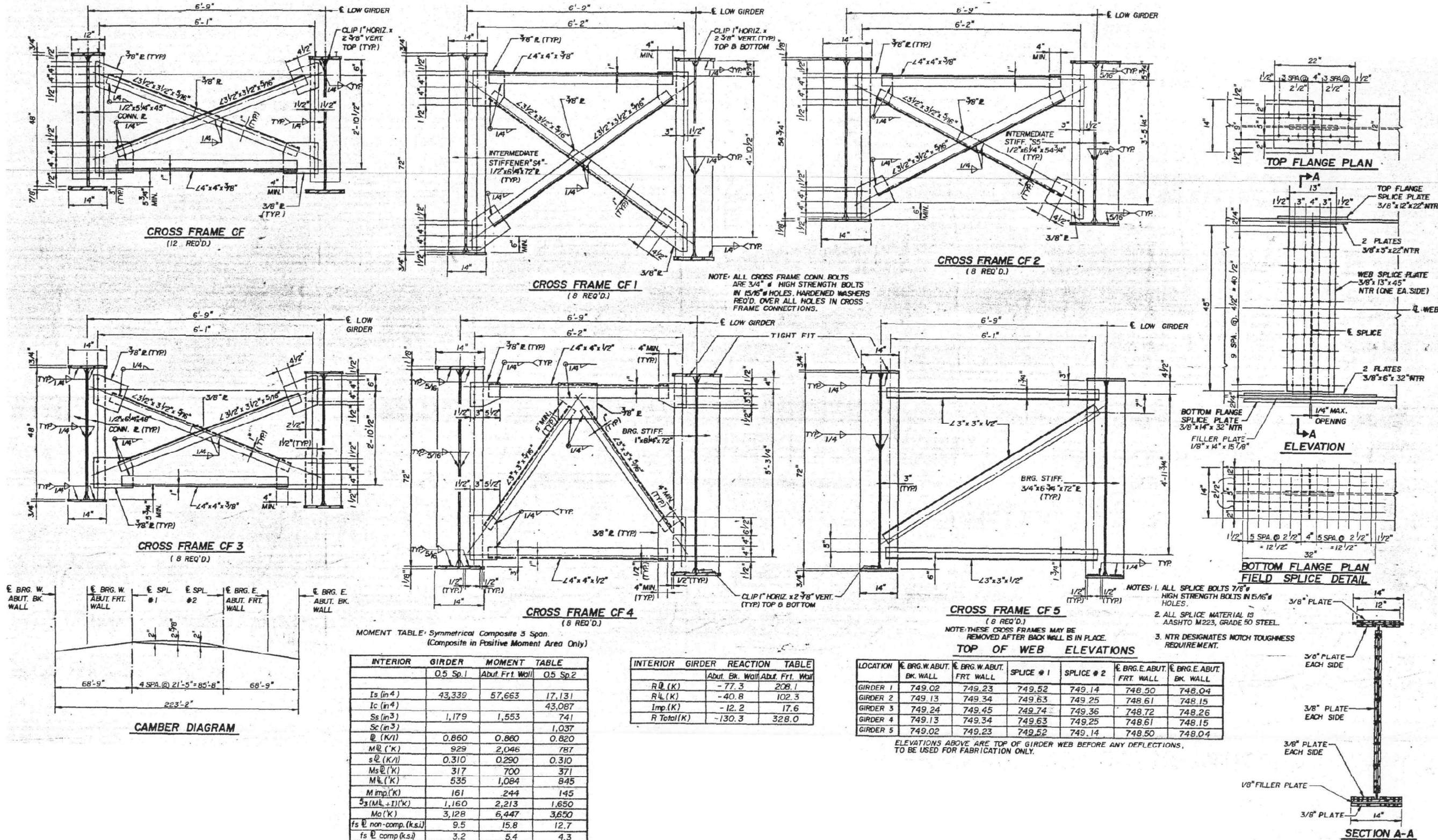
SL 3/15/19
Use Lipos 3 and H
to Low Girders
* Use 1/2" bent R for Girders #1, #2, #15 & #16.

FOR INFORMATION ONLY

MODEL: Default; FILE NAME: p:\m\baronm.dwg; PLOT DATE: 1/3/2020; PROJECT: I-39 OVER US 24; SHEET: 27 OF 28

USER NAME = recendezr	DESIGNED -	REVISED -	STATE OF ILLINOIS DEPARTMENT OF TRANSPORTATION	STRUCTURAL STEEL DETAILS		F.A.J. RTE.	SECTION	COUNTY	TOTAL SHEETS	SHEET NO.
DRAWN -	REVISOR -	DATE -		39	*	WOODFORD	27	8		
PLOT SCALE = 2,000' / in.	CHECKED -	REVISOR -		CONTRACT NO. 68F48			ILLINOIS FED. AID PROJECT			
PLOT DATE = 1/3/2020	DATE -	REVISOR -		SCALE: SHEET OF SHEETS STA. TO STA.		*102[(2HV)BR;HB-1;HB;HB-2]BP				

SN 102-0060 TR 207 OVER I-39



FOR INFORMATION ONLY

STATE OF ILLINOIS
DEPARTMENT OF TRANSPORTATION

CROSS FRAMES & GIRDERS DETAILS

SCALE: SHEET OF SHEETS STA. TO STA.

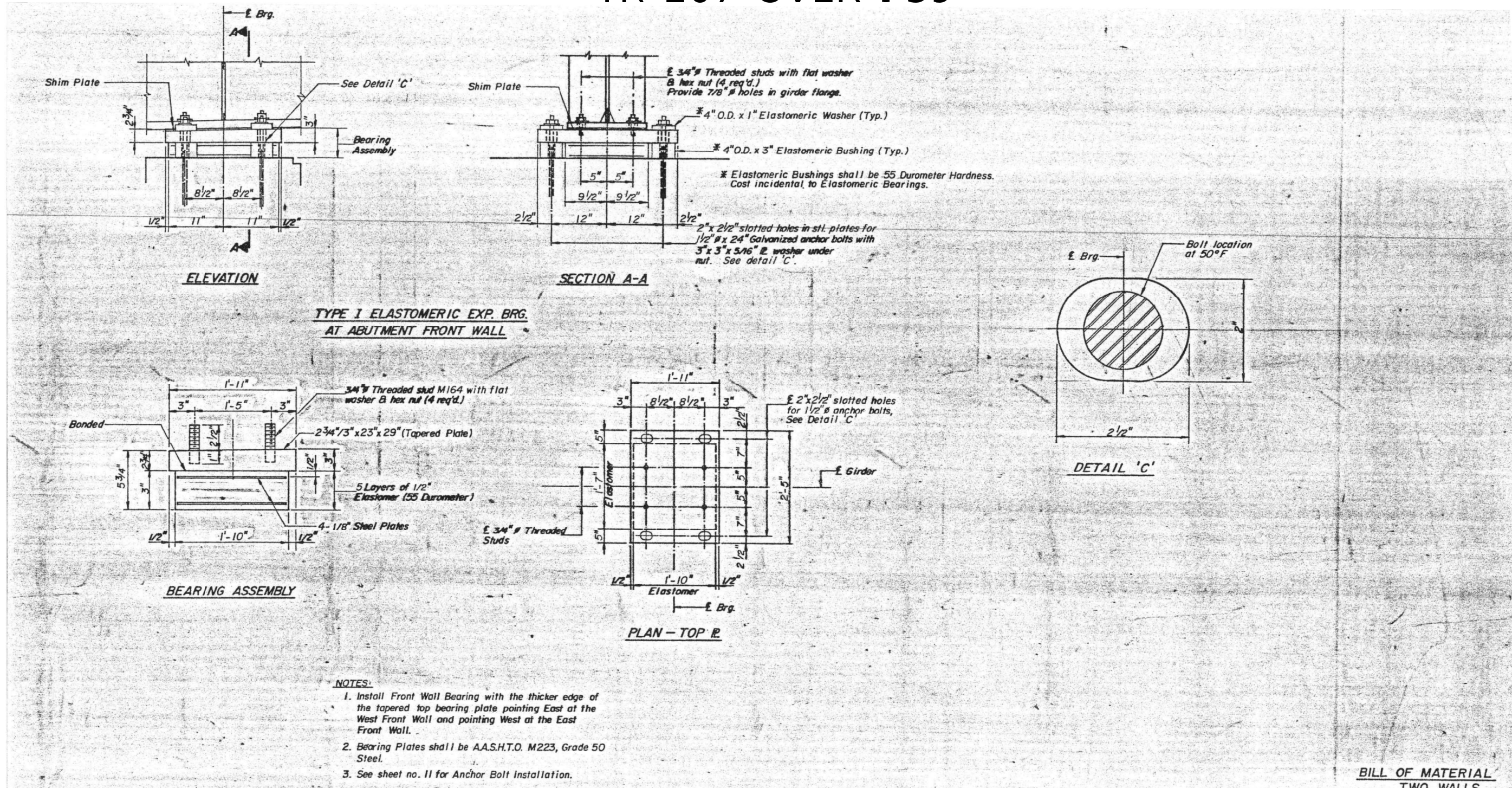
F.A.J. RTE.	SECTION	COUNTY	TOTAL SHEETS	SHEET NO.
39	*	WOODFORD	27	12
CONTRACT NO. 68F48				

ILLINOIS FED. AID PROJECT

*102(2HVB)BR;HB-1;HB-2)BP

MODEL: Default FILE NAME: p:\projects\102-0060\102-0060.dwg PROJECT: 102-0060 OFFICE: CHICAGO DATE: 1/3/2020

SN 102-0060 TR 207 OVER I-39



**BILL OF MATERIAL
TWO WALLS**

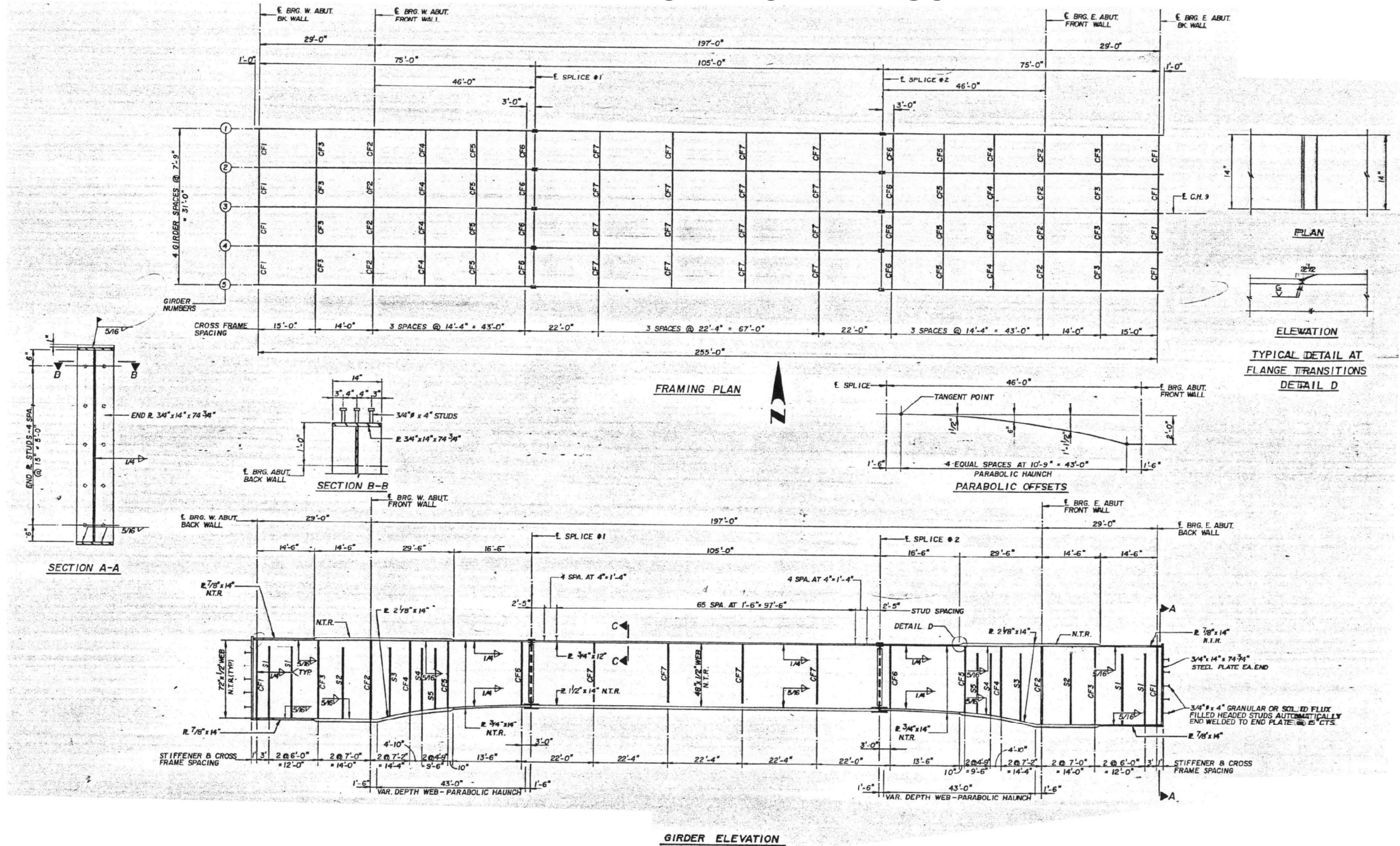
Item	Unit	Total
Elastomeric Bearing Assembly-Type I	Each	10

FOR INFORMATION ONLY

MODEL: Default
 FILE NAME: p:\m\baronm.dwg
 PROJECT: 102-0060-TR207
 SHEET: 15 of 15
 DATE: 1/3/2020

USER NAME = recendezr	DESIGNED -	REVISED -	STATE OF ILLINOIS DEPARTMENT OF TRANSPORTATION	FRAMING PLAN		F.A.J. RTE.	SECTION	COUNTY	TOTAL SHEETS	SHEET NO.
PLOT SCALE = 2,000' / in.	DRAWN -	REVISED -		39	*	WOODFORD	27	15		
PLOT DATE = 1/3/2020	CHECKED -	REVISED -		SCALE: SHEET OF SHEETS STA. TO STA.		CONTRACT NO. 68F48				
	DATE -	REVISED -		ILLINOIS FED. AID PROJECT *102[(2HVB)BR;HB-1;HB;HB-2]BP						

SN 102-0061 KAPPA ROAD OVER I-39



FOR INFORMATION ONLY

MODEL: Default
 FILE NAME: p:\m\baronm.dwt
 PROJECT: 102-0061
 SHEET: 17
 DATE: 1/3/2020

USER NAME = recendezr	DESIGNED -	REVISED -
DRAWN -	REVISED -	REVISED -
PLOT SCALE = 2,000' / in.	CHECKED -	REVISED -
PLOT DATE = 1/3/2020	DATE -	REVISED -

**STATE OF ILLINOIS
DEPARTMENT OF TRANSPORTATION**

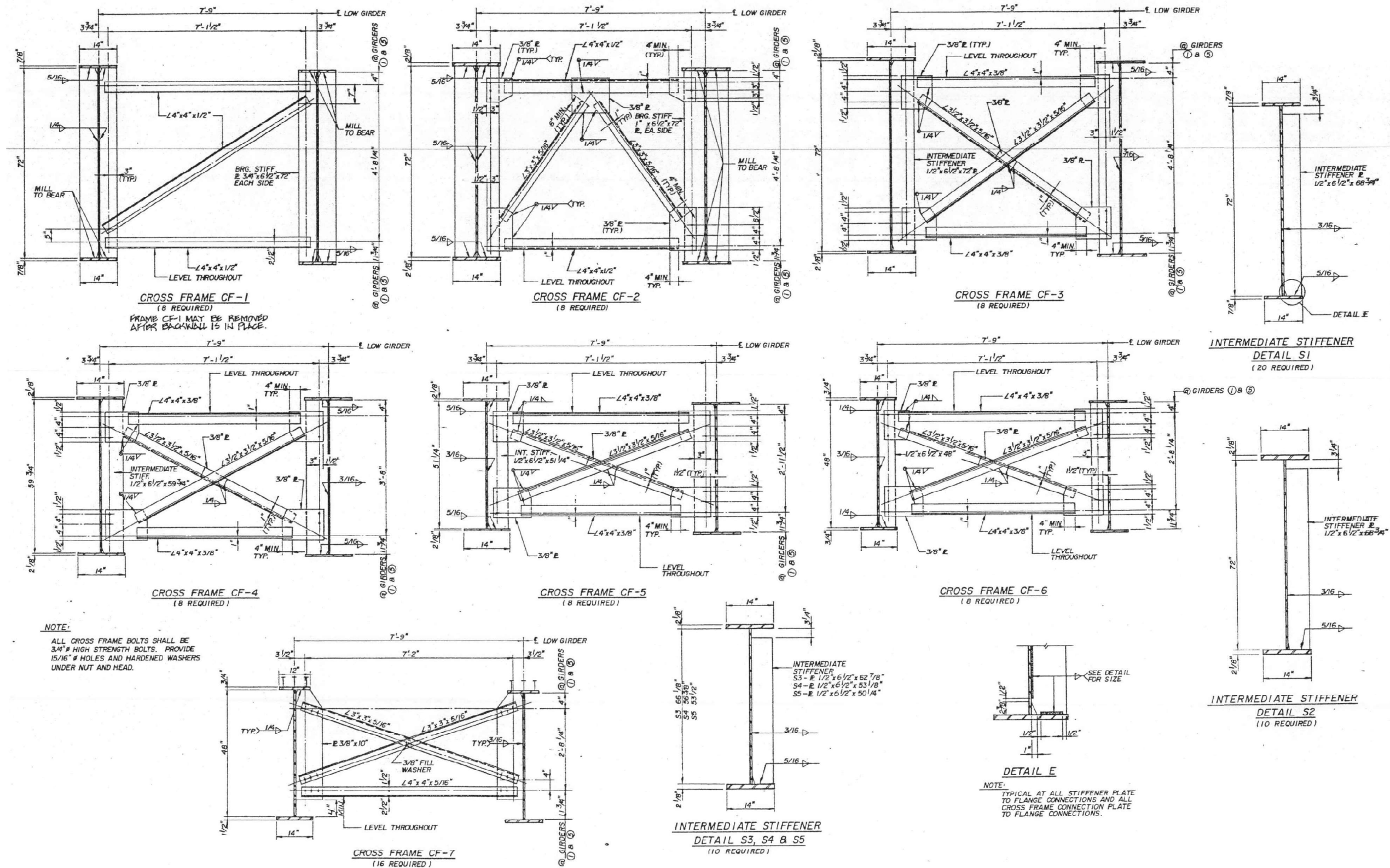
FRAMING VIEW

SCALE: SHEET OF SHEETS STA. TO STA.

F.A.J. RTE.	SECTION	COUNTY	TOTAL SHEETS	SHEET NO.
39	*	WOODFORD	27	17
CONTRACT NO. 68F48				

ILLINOIS FED. AID PROJECT
*102[(2)HVB]BR;HB-1;HB-2]BP

SN 102-0061 KAPPA ROAD OVER I-39



FOR INFORMATION ONLY

MODEL: Default
 FILE NAME: p:\work\102-0061\102-0061-01\102-0061-01.dwg
 PROJECT: 102-0061
 OFFICE: DISTRICT 4
 DATE: 1/3/2020

USER NAME = recendezr	DESIGNED -	REVISED -
DRAWN -	REVISED -	REVISED -
PLOT SCALE = 2,000' / in.	CHECKED -	REVISED -
PLOT DATE = 1/3/2020	DATE -	REVISED -

**STATE OF ILLINOIS
DEPARTMENT OF TRANSPORTATION**

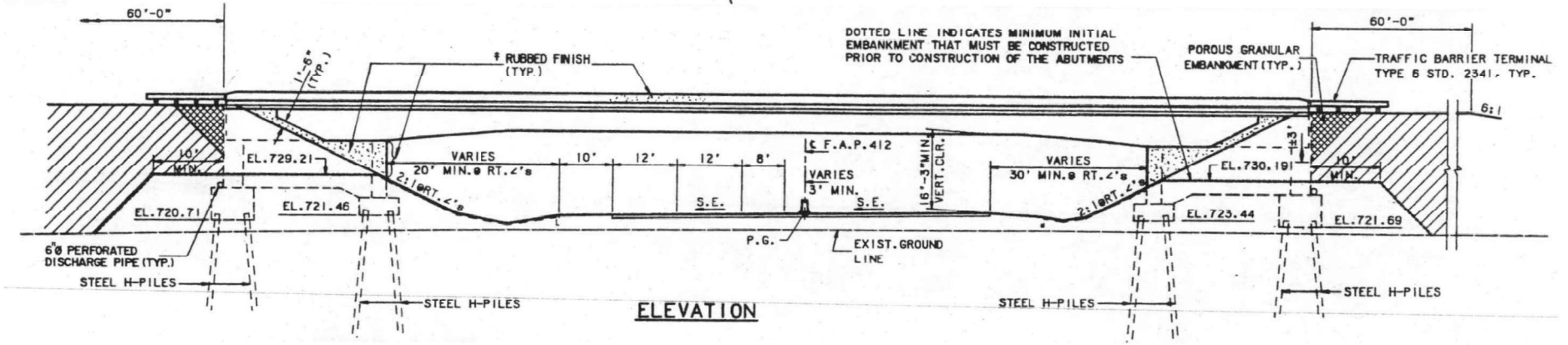
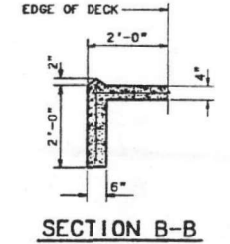
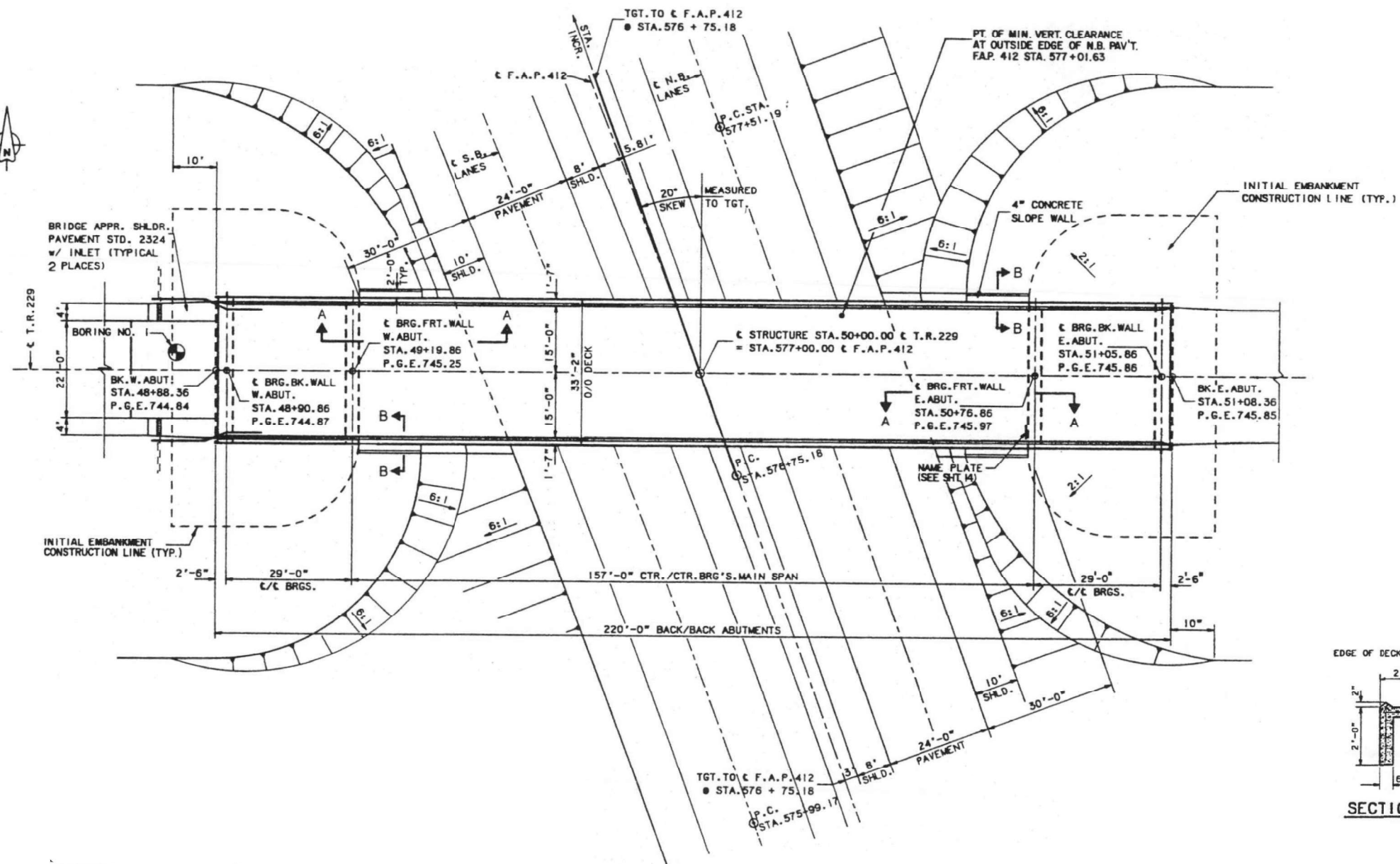
CROSS FRAME DETAILS

SCALE: SHEET OF SHEETS STA. TO STA.

F.A.J. RTE.	SECTION	COUNTY	TOTAL SHEETS	SHEET NO.
39	*	WOODFORD	27	19
CONTRACT NO. 68F48				

ILLINOIS FED. AID PROJECT
*102[(2HV)BR;HB-1;HB-2]BP

SN 102-0062 TOWNSHIP ROAD 229 OVER I-39



FOR INFORMATION ONLY

MODEL: Default
 FILE: N:\MIS\p\1020062\1020062.dwg
 PROJECT: 1020062
 OFFICE: DISTRICT 4
 PROJECT: 1020062
 OFFICE: DISTRICT 4
 PROJECT: 1020062
 OFFICE: DISTRICT 4
 PROJECT: 1020062

USER NAME = recendezr	DESIGNED -	REVISED -
	DRAWN -	REVISED -
PLOT SCALE = 2,000' / in.	CHECKED -	REVISED -
PLOT DATE = 1/3/2020	DATE -	REVISED -

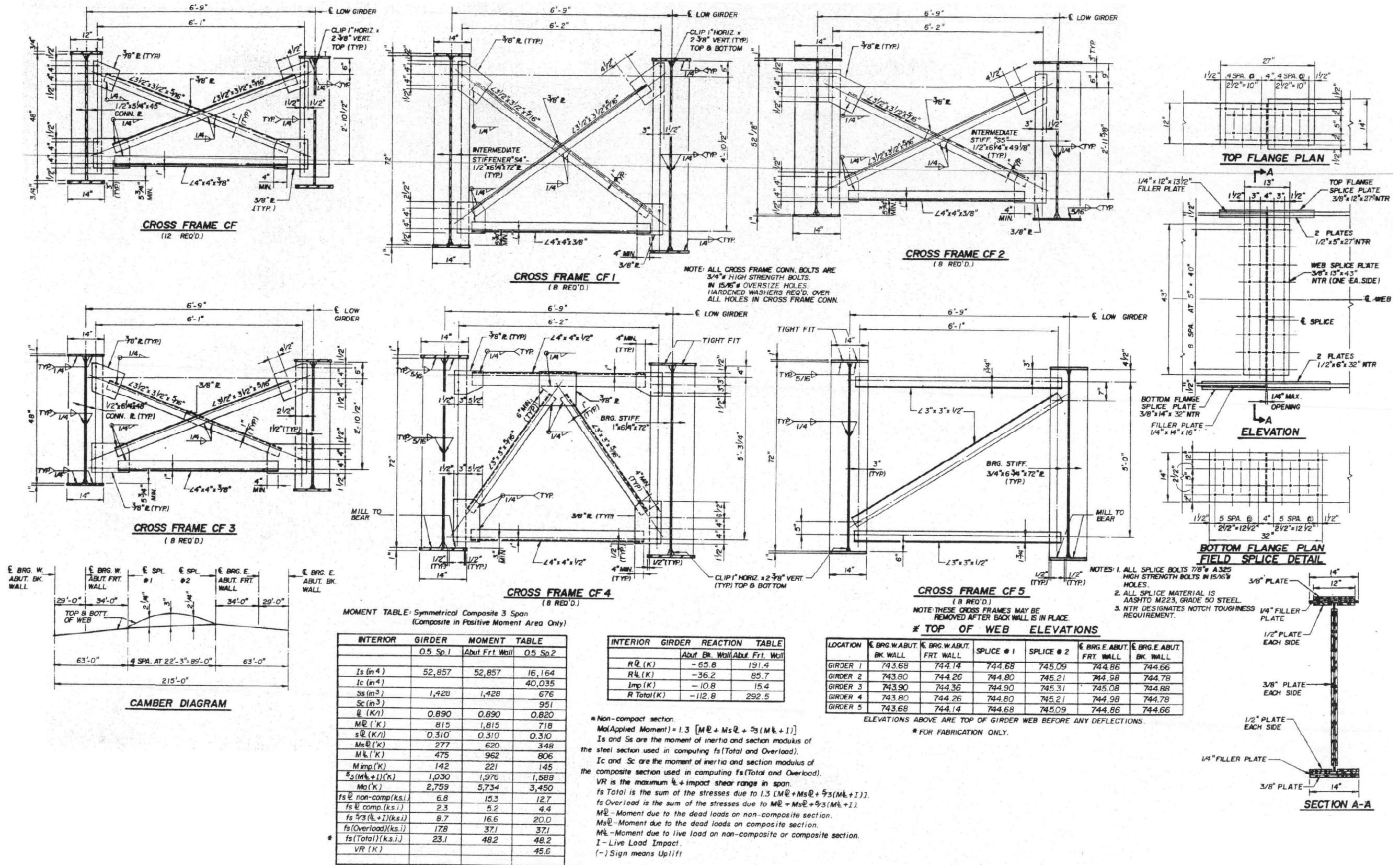
STATE OF ILLINOIS
DEPARTMENT OF TRANSPORTATION

PLAN AND ELEVATION VIEW	
SCALE:	SHEET OF SHEETS STA. TO STA.

F.A.J. RTE.	SECTION	COUNTY	TOTAL SHEETS	SHEET NO.
39	*	WOODFORD	27	22
CONTRACT NO. 68F48				

ILLINOIS FED. AID PROJECT
*102[(2)HVB]BR;HB-1;HB;HB-2]BP

SN 102-0062 TOWNSHIP ROAD 229 OVER I-39

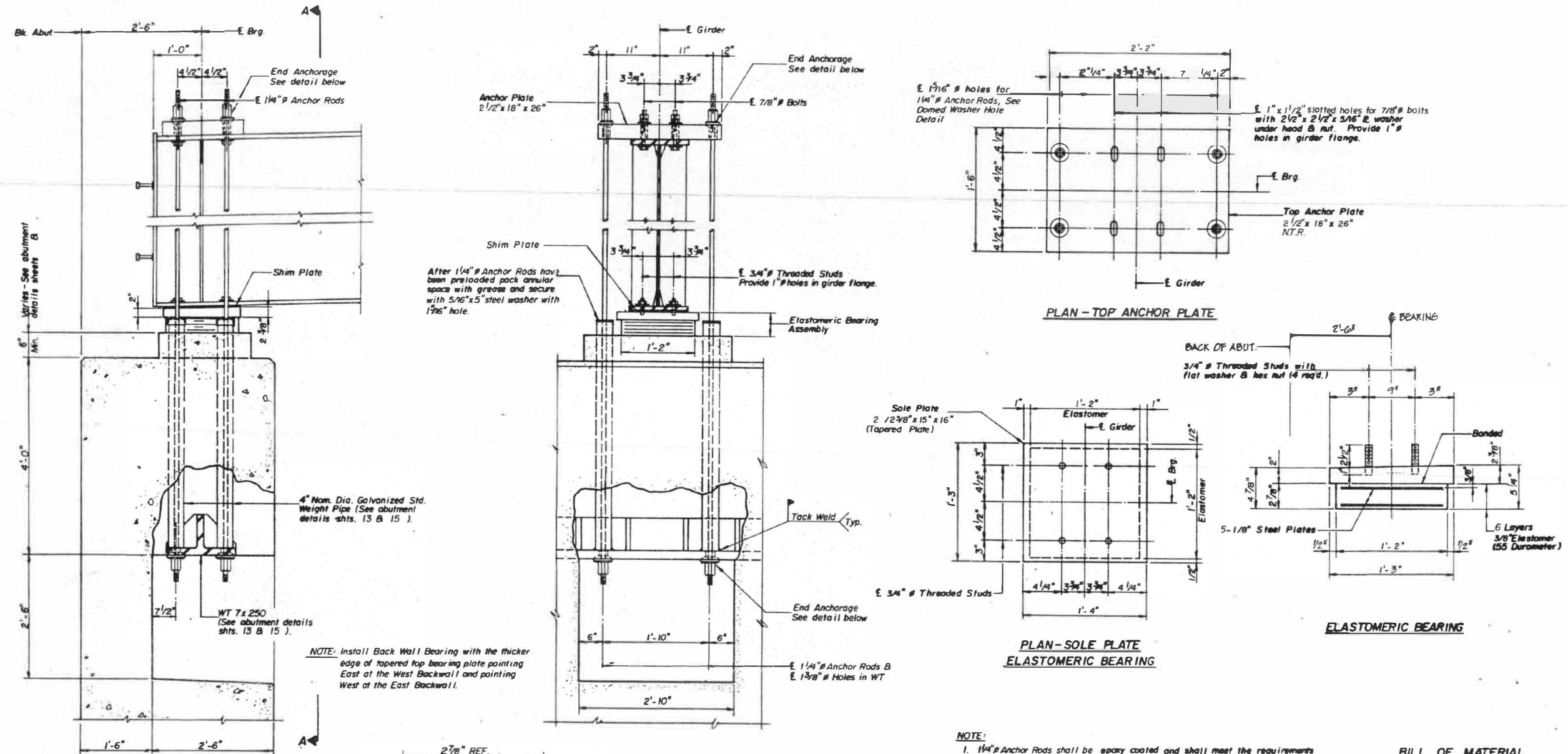


FOR INFORMATION ONLY

MODEL: Default
 FILE NAME: p:\utmsroom\dot\illinois\pwr\DOT\Documents\DOT - Offices\District 4\projects\01_48\I48CAD\Drawings\Drawings\6848\CF-Details.dwg
 PROJECT: 01_48\I48CAD\Drawings\Drawings\6848\CF-Details.dwg

USER NAME = recendezr	DESIGNED -	REVISED -		STATE OF ILLINOIS DEPARTMENT OF TRANSPORTATION	CROSS FRAMES & GIRDER DETAILS	F.A.I. RTE. 39	SECTION	COUNTY WOODFORD	TOTAL SHEETS 27	SHEET NO. 24
PLOT SCALE = 2,0000' / in.	CHECKED -	REVISED -								
PLOT DATE = 1/3/2020	DATE -	REVISED -								
						SCALE:	SHEET OF SHEETS	STA. TO STA.	ILLINOIS FED. AID PROJECT *102[(2HVB)BR;HB-1;HB-2]BP	

SN 102-0062 TOWNSHIP ROAD 229 OVER I-39

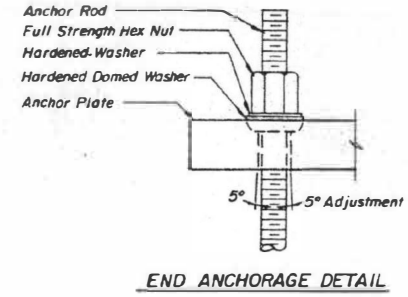


NOTE: Install Back Wall Bearing with the thicker edge of tapered top bearing plate pointing East at the West Backwall and pointing West at the East Backwall.

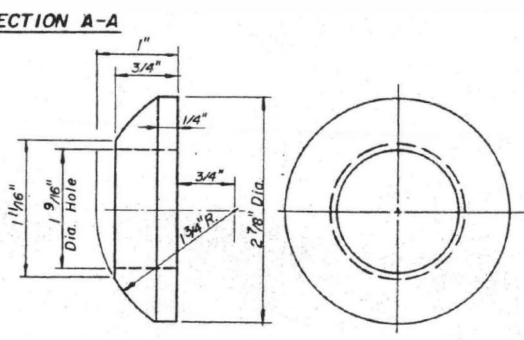
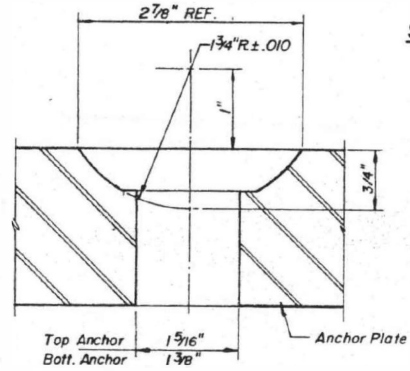
- NOTE:**
- 1/4" # Anchor Rods shall be epoxy coated and shall meet the requirements of A.A.S.H.T.O. M275-79, Type II bars with minimum tensile strength of 150,000 p.s.i. and minimum yield strength of 120,000 p.s.i.
 - Initially stress each threadbar to 28 kips after anchorage is set. After completing pouring sequence 1 & 2 of the deck slab stress each threadbar an additional 10 kips.
 - Top Anchor Plate and Elastomeric Bearing Sole Plate shall be A.A.S.H.T.O. M223, Grade 50 Steel.

**BILL OF MATERIAL
TWO WALLS**

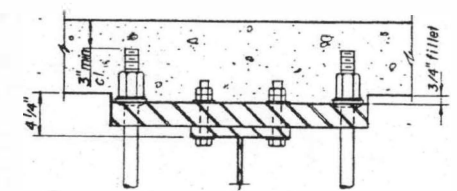
Item	Unit	Total
Elastomeric Bearing Assembly - Type I	Each	10



NOTE: The Contractor may submit an equivalent system for approval of the Engineer before ordering of Materials.



Material to meet the chemical and mechanical requirements of F436 for "Hardened Steel Washers".



FOR INFORMATION ONLY

MODEL: Default FILE NAME: p:\w\planning\dot\illinois.gov\p\w\DOT\Documents\DOT_Offices\District_4\Projects\04_68F48\CAD\Drawings\Details\0468F48-shc-details.dgn

USER NAME = recendez	DESIGNED -	REVISED -
PLOT SCALE = 2.0000' / in.	DRAWN -	REVISED -
PLOT DATE = 1/31/2020	CHECKED -	REVISED -
	DATE -	REVISED -

**STATE OF ILLINOIS
DEPARTMENT OF TRANSPORTATION**

BEARING & ABUTMENT WALL DETAILS	
SCALE:	SHEET OF SHEETS STA. TO STA.

F.A.I. RTE. 39	SECTION	COUNTY WOODFORD	TOTAL SHEETS 27	SHEET NO. 26
			CONTRACT NO. 68F48	
ILLINOIS FED. AID PROJECT				

*102[(2HVB)BR;HB-1;HB;HB-2]BP

