

050

STATE OF ILLINOIS  
DEPARTMENT OF TRANSPORTATION

F.A.I. RTE.	SECTION	COUNTY	TOTAL SHEETS	SHEET NO.
74	(74,10-4,1)RS-2		34	1
*CHAMPAIGN & PIATT		ILLINOIS	CONTRACT NO. 70D80	

FOR INDEX OF SHEETS, SEE SHEET NO. 2  
FOR SUMMARY OF QUANTITIES, SEE SHEET NOS. 3-5

PROPOSED  
HIGHWAY PLANS

F.A.I. ROUTE 74 / (I-74)  
SECTION (74,10-4,1)RS-2  
PROJECT NHPP-6ZWR(540)  
RESURFACING (INT-3RD) DESIGNED OVERLAY  
CHAMPAIGN & PIATT COUNTIES

C-95-065-19

1.3 MI. W. OF CHAMPAIGN CO. LINE TO  
0.2 MI. W. OF ILL. 47 INTERCHANGE IN MAHOMET

D-95-048-19



**CURRENT TRAFFIC DATA**

F.A.I. 74 / (I-74)

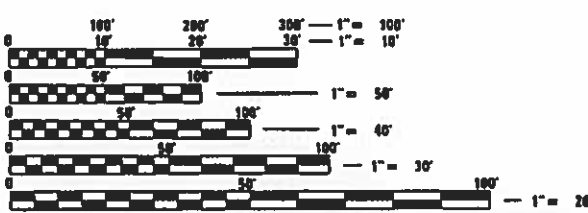
2019 ADT	=	22,700
P.V. %	=	67.4
S.U. %	=	4.8
M.U. %	=	27.8
TRUCK RTE.	=	CLASS I
N.H.S. RTE.	=	YES

**DESIGN DESIGNATION**

INTERSTATE

**TOWNSHIPS**

BLUE RIDGE, MAHOMET

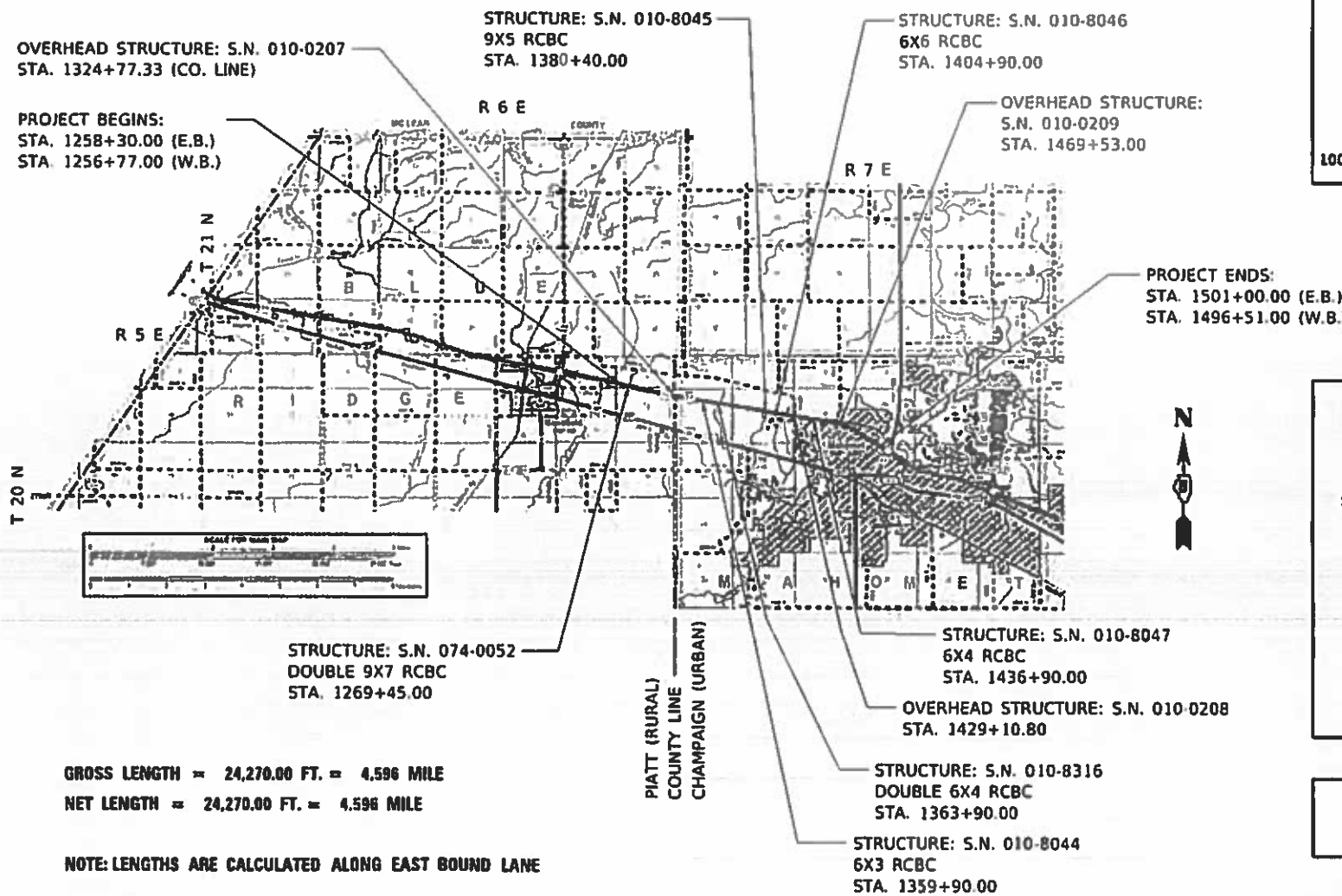


FULL SIZE PLANS HAVE BEEN PREPARED USING STANDARD ENGINEERING SCALES. REDUCED SIZED PLANS WILL NOT CONFORM TO STANDARD SCALES. IN MAKING MEASUREMENTS ON REDUCED PLANS, THE ABOVE SCALES MAY BE USED.

J.U.L.I.E.  
JOINT UTILITY LOCATION INFORMATION FOR EXCAVATORS  
1-800-892-0123  
OR 811

PROJECT ENGINEER: JASON STULTS, P.E.  
SQUAD LEADER: GREG EAGLIN  
DESIGN ENGINEER: JASON GOBLE  
PHONE NUMBER: (217)465-4181

CONTRACT NO. 70D80



STATE OF ILLINOIS  
DEPARTMENT OF TRANSPORTATION

SUBMITTED 01/23 2020  
Kensila Hammett  
REGIONAL ENGINEER

March 20 2020  
EA/ETK  
ENGINEER OF DESIGN AND ENVIRONMENT

March 20 2020  
Jason Stults  
DIRECTOR OF HIGHWAYS PROJECT IMPLEMENTATION

PRINTED BY THE AUTHORITY  
OF THE STATE OF ILLINOIS



# SUMMARY OF QUANTITIES

LOCATION OF WORK:	FAI 74 (I-74)	FAI 74 (I-74)
	RURAL	URBAN (MAHOMET)
	INTERSTATE	INTERSTATE
	STA. 1256+77 TO STA. 1324+77.33	STA. 1324+77.33 TO STA. 1501+00
COUNTY:	PIATT	CHAMPAIGN
FUNDING BREAKOUT:	FEDERAL 90% / STATE 10%	FEDERAL 90% / STATE 10%
CONSTRUCTION TYPE CODE:	0005	0005

CODE NO.	ITEM	UNIT	TOTAL QUANTITY	QUANTITY	QUANTITY
X4420523	CLASS A PATCHES, TYPE IV, 7 INCH (SPECIAL)	SQ YD	166.0	0.0	166.0
40600290	BITUMINOUS MATERIAL (TACK COAT)	POUND	59,696.0	16,689.0	43,007.0
40600400	MIXTURE FOR CRACKS, JOINTS, AND FLANGEWAYS	TON	112.0	34.0	78.00
40600990	TEMPORARY RAMP	SQ YD	321.0	107.0	214.0
40603240	POLYMERIZED HOT-MIX ASPHALT BINDER COURSE, IL-19.0, N90	TON	16,236.0	4,538.0	11,698.0
40605034	POLYMERIZED HOT-MIX ASPHALT SURFACE COURSE, STONE MATRIX ASPHALT, 12.5, MIX "E", N80	TON	7,645.0	2,145.0	5,500.0
44000161	HOT-MIX ASPHALT SURFACE REMOVAL, 3"	SQ YD	2,357.0	786.0	1,571.0
44000175	HOT-MIX ASPHALT SURFACE REMOVAL, 6-1/2"	SQ YD	64,575.0	17,925.0	46,650.0
44213000	PATCHING REINFORCEMENT	SQ YD	252.0	22.0	230.0
44213200	SAW CUTS	FOOT	568.0	56.0	512.0
44213204	TIE BARS 3/4"	EACH	249.0	26.0	223.0
67000500	ENGINEER'S FIELD OFFICE, TYPE B	CAL MO	5.0	1.0	4.0
67100100	MOBILIZATION	L SUM	1.0	0.3	0.7
70100420	TRAFFIC CONTROL AND PROTECTION, STANDARD 701411	EACH	1.0	0.0	1.0
* SPECIALTY ITEM					

MODEL: \$MODELNAME\$  
 FILE: \$NAME\$.dwg  
 PROJECT: \$PROJECTNAME\$.dot  
 OFFICE: \$OFFICE\$.dot  
 USER: \$USER\$.dot  
 DATE: \$DATE\$.dot  
 TIME: \$TIME\$.dot  
 SCALE: \$SCALE\$.dot  
 SHEET: \$SHEET\$.dot  
 TOTAL: \$TOTAL\$.dot  
 SHEETS: \$SHEETS\$.dot  
 NO.: \$NO\$.dot

USER NAME = GobleJR	DESIGNED - JRG	REVISED -
DRAWN - JRG	CHECKED -	REVISIED -
PLOT SCALE = 40.0000' / in.	DATE -	REVISIED -
PLOT DATE = 1/23/2020		

**STATE OF ILLINOIS  
DEPARTMENT OF TRANSPORTATION**

**SUMMARY OF QUANTITIES**

SCALE: N-T-S      SHEET 1 OF 3 SHEETS      STA.      TO STA.

F.A.I. RTE.	SECTION	COUNTY	TOTAL SHEETS	SHEET NO.
74	(74.10-4.1)RS-2	*	34	3
* CHAMPAIGN & PIATT			CONTRACT NO. 70D80	
ILLINOIS FED. AID PROJECT				











# SCHEDULE OF QUANTITIES

## 40600990 TEMPORARY RAMP

LOCATION	STATION	TO	STATION	DROP (INCH)	LENGTH (FT)	WIDTH (FT)	AREA (SQ YD)	CONSTRUCT AFTER
<b>PIATT COUNTY (RURAL)</b>								
E.B.	D.L.		1258+30.00		20.00	12.00	26.67	HMA BINDER
W.B.	D.L.		1256+77.00		20.00	12.00	26.67	HMA BINDER
E.B.	P.L.		1321+94.82		20.00	12.00	26.67	HMA BINDER
W.B.	P.L.		1321+75.34		20.00	12.00	26.67	HMA BINDER
SUB-TOTAL 1 =							106.67	
USE =							107.00	
<b>CHAMPAIGN COUNTY (URBAN)</b>								
E.B.	D.L.		1500+80.00		20.00	12.00	26.67	HMA BINDER
W.B.	D.L.		1496+31.00		20.00	12.00	26.67	HMA BINDER
E.B.	P.L.		1327+59.32		20.00	12.00	26.67	HMA BINDER
W.B.	P.L.		1327+39.84		20.00	12.00	26.67	HMA BINDER
W.B.	P.L.		1426+09.48		20.00	12.00	26.67	HMA BINDER
W.B.	P.L.		1431+73.98		20.00	12.00	26.67	HMA BINDER
W.B.	P.L.		1494+51.00		20.00	12.00	26.67	HMA BINDER
W.B.	P.L.		1496+31.00		20.00	12.00	26.67	HMA BINDER
SUB-TOTAL 2 =							213.33	
USE =							214.00	

TAPER RATE = 1:120

TOTAL =	321.00
USE =	321.00
	SQ YD
FAI-74 =	321.00
	SQ YD

## 44000161 HOT-MIX ASPHALT SURFACE REMOVAL, 3"

LOCATION	STATION	TO	STATION	LENGTH (FT)	AVE. WIDTH (FT)	44000161 QUANTITY (SQ YD)
<b>PIATT COUNTY (RURAL)</b>						
E.B. **	D.L.		1323+39.82		1324+77.33	137.51
W.B. **	D.L.		1323+20.34		1324+77.33	156.99
E.B. **	P.L.		1323+39.82		1324+77.33	137.51
W.B. **	P.L.		1323+20.34		1324+77.33	156.99
SUB-TOTAL 1 =						785.33
USE =						786.00
<b>CHAMPAIGN COUNTY (URBAN)</b>						
E.B. **	D.L.		1324+77.33		1326+34.32	156.99
W.B. **	D.L.		1324+77.33		1326+14.84	137.51
E.B. **	P.L.		1324+77.33		1326+34.32	156.99
W.B. **	P.L.		1324+77.33		1326+14.84	137.51
W.B. ***	D.L.		1427+54.48		1430+48.98	294.50
W.B. ***	P.L.		1427+54.48		1430+48.98	294.50
SUB-TOTAL 2 =						1570.67
USE =						1571.00

\*\* MILLING TRANSITION AT S.N. 010-0207  
 \*\*\* MILLING TRANSITION AT S.N. 010-0208

TOTAL =	2357.00
USE =	2357.00
	SQ YD
FAI-74 =	2357.00
	SQ YD

## CLASS A PATCHES (SPECIAL) SCHEDULE

LOCATION	STATION	LENGTH (FT)	WIDTH (FT)	QUANTITY (SQ YD)	QUANTITY (SQ YD)	QUANTITY (FT)	TRANSVERSE QUANTITY (EACH)	LONGITUDINAL QUANTITY (EACH)	QUANTITY (SQ YD)
<b>PIATT COUNTY (RURAL)</b>									
W.B.	D.L.	1324+61.33	16.00	12.00	21.3	56.0	26.0	0.0	21.3
SUB-TOTAL 1 =				21.3	56.0	26.0	0.0	0.0	21.3
USE =				22.0	56.0	26.0	0.0	0.0	22.0
<b>CHAMPAIGN COUNTY (URBAN)</b>									
W.B.	D.L.	1324+77.33	34.00	12.00	45.3	92.0	26.0	11.0	45.3
W.B.	D.L.	1325+17.33	40.00	12.00	53.3	104.0	26.0	13.0	53.3
MISC.	TBD	TBD	50.00	12.00	66.7	124.0	26.0	17.0	66.7
MISC.	TBD	TBD	12.00	12.00	16.0	48.0	26.0	0.0	16.0
MISC.	TBD	TBD	12.00	12.00	16.0	48.0	26.0	0.0	16.0
MISC.	TBD	TBD	12.00	12.00	16.0	48.0	26.0	0.0	16.0
MISC.	TBD	TBD	12.00	12.00	16.0	48.0	26.0	0.0	16.0
SUB-TOTAL 2 =				64.0	165.3	512.0	182.0	41.0	229.3
USE =				64.0	166.0	512.0	182.0	41.0	230.0

NOTES: THE STATIONS LISTED FOR THE PATCHES ARE APPROXIMATE LOCATIONS. THE ACTUAL LOCATION AND SIZE SHALL BE FIELD VERIFIED AS SPECIFIED IN G.N.-442B.

THE LOCATIONS OF THE CLASS A PATCHES, 7" OCCUR IN THE DRIVING LANE WHERE THE HOT-MIX ASPHALT RESURFACING WILL BE MILLED TO BARE P.C.C. PAVEMENT. THE PATCHING OPERATIONS IN THIS AREA SHALL NOT BE COMPLETED UNTIL AFTER THE EXISTING HOT-MIX ASPHALT MATERIAL IS REMOVED.

TOTAL =	86.0	166.0	568.0	208.0	41.0	252.0
USE =	86.0	166.0	568.0	208.0	41.0	252.0
	SQ YD	SQ YD	FT	EACH	EACH	SQ YD
FAI-74 =	86.0	166.0	568.0	208.0	41.0	252.0
	SQ YD	SQ YD	FT	EACH	EACH	SQ YD

MODEL: I:\MODEL\MHFS... FILE: MHFS... PROJECT: I:\PROJECTS\... OFFICE: I:\OFFICE\... DATE: 1/23/2020

USER NAME = GobleJR	DESIGNED - JRG	REVISED -
	DRAWN - JRG	REVISED -
PLOT SCALE = 40.0000' / 1 in.	CHECKED -	REVISED -
PLOT DATE = 1/23/2020	DATE -	REVISED -

**STATE OF ILLINOIS  
DEPARTMENT OF TRANSPORTATION**

**SCHEDULE OF QUANTITIES**

SCALE: N-T-S      SHEET 1 OF 5 SHEETS      STA.      TO STA.

F.A.I. RTE.	SECTION	COUNTY	TOTAL SHEETS	SHEET NO.
74	(74.10-4.1)RS-2	*	34	8
* CHAMPAIGN & PIATT			CONTRACT NO. 70D80	
ILLINOIS FED. AID PROJECT				



# SCHEDULE OF QUANTITIES

**78000200 THERMOPLASTIC PAVEMENT MARKING - LINE 4"**  
**X7830070 GROOVING FOR RECESSED PAVEMENT MARKING, 5"**

LOCATION	STATION	TO	STATION	78000200 QUANTITY (FT)	COLOR	X7830070 QUANTITY (FT)
<b>PIATT COUNTY (RURAL)</b>						
E.B.	P.L EDGE LINE	1258+30.00	1324+77.33	6647.33	YELLOW	6647.33
W.B.	P.L EDGE LINE	1256+77.00	1324+77.33	6800.33	YELLOW	6800.33
E.B.	D.L EDGE LINE	1258+30.00	1324+77.33	6647.33	WHITE	6647.33
W.B.	D.L EDGE LINE	1256+77.00	1324+77.33	6800.33	WHITE	6800.33
SUB-TOTAL 1 =				26895.32		26895.32
USE =				26896.00		26896.00
<b>CHAMPAIGN COUNTY (URBAN)</b>						
E.B.	P.L EDGE LINE	1324+77.33	1501+00.00	17622.67	YELLOW	17622.67
W.B.	P.L EDGE LINE	1324+77.33	1496+51.00	17173.67	YELLOW	17173.67
E.B.	D.L EDGE LINE	1324+77.33	1501+00.00	17622.67	WHITE	17622.67
W.B.	D.L EDGE LINE	1324+77.33	1496+51.00	17173.67	WHITE	17173.67
SUB-TOTAL 2 =				69592.68		69592.68
USE =				69593.00		69593.00
<b>TOTAL =</b>				<b>96489.00</b>		<b>96489.00</b>
<b>USE =</b>				<b>96489.00</b>		<b>96489.00</b>
				FT		FT
<b>FAI-74 =</b>				<b>96489.00</b>		<b>96489.00</b>
				FT		FT

**78100100 RAISED REFLECTIVE PAVEMENT MARKER**  
**78300200 RAISED REFLECTIVE PAVEMENT MARKER REMOVAL**

LOCATION	STATION	TO	STATION	LENGTH (FT)	78100100 ONE-WAY CRYSTAL QUANTITY (EACH)	78300200 RRPM REMOVAL (EACH)
<b>PIATT COUNTY (RURAL)</b>						
E.B.	C.L.	1321+94.82	1324+77.33	282.51	10.0	10.0
W.B.	C.L.	1321+75.34	1324+77.33	301.99	10.0	10.0
SUB-TOTAL 1 =					20.0	20.0
USE =					20.0	20.0
<b>CHAMPAIGN COUNTY (URBAN)</b>						
E.B.	C.L.	1324+77.33	1327+79.32	301.99	8.0	8.0
W.B.	C.L.	1324+77.33	1327+59.84	282.51	8.0	8.0
W.B.	C.L.	1426+09.48	1431+93.98	584.50	16.0	16.0
W.B.	C.L.	1494+51.00	1496+51.00	200.00	8.0	8.0
SUB-TOTAL 2 =					40.0	40.0
USE =					40.0	40.0
<b>TOTAL =</b>					<b>60.0</b>	<b>60.0</b>
<b>USE =</b>					<b>60.0</b>	<b>60.0</b>
					EACH	EACH
<b>FAI-74 =</b>					<b>60.0</b>	<b>60.0</b>
					EACH	EACH

**78004210 PREFORMED PLASTIC PAVEMENT MARKING, TYPE B - INLAID - LINE 4"**

LOCATION	STATION	TO	STATION	78004210 QUANTITY (FT)	COLOR
<b>PIATT COUNTY (RURAL)</b>					
E.B.	C.L.	1321+94.82	1324+77.33	80.00	WHITE
W.B.	C.L.	1321+75.34	1324+77.33	80.00	WHITE
SUB-TOTAL 1 =				160.00	
USE =				160.00	
<b>CHAMPAIGN COUNTY (URBAN)</b>					
E.B.	C.L.	1324+77.33	1327+79.32	80.00	WHITE
W.B.	C.L.	1324+77.33	1327+59.84	80.00	WHITE
W.B.	C.L.	1426+09.48	1431+93.98	150.00	WHITE
W.B.	C.L.	1494+51.00	1496+51.00	50.00	WHITE
SUB-TOTAL 2 =				360.00	
USE =				360.00	
<b>TOTAL =</b>				<b>520.00</b>	
<b>USE =</b>				<b>520.00</b>	
				FT	
<b>FAI-74 =</b>				<b>520.00</b>	
				FT	

**Z0033700 LONGITUDINAL JOINT SEALANT**

LOCATION (FAI - 74)	STATION	TO	STATION	Z0033700 LENGTH (FT)
<b>PIATT COUNTY (RURAL)</b>				
E.B. DRIVING LANE	C.L.	1258+30.00	1324+77.33	6647.33
W.B. DRIVING LANE	C.L.	1256+77.00	1324+77.33	6800.33
SUB-TOTAL 1 =				14032.16
USE =				14033.00
<b>CHAMPAIGN COUNTY (URBAN)</b>				
E.B. DRIVING LANE	C.L.	1324+77.33	1501+00.00	17622.67
W.B. DRIVING LANE	C.L.	1324+77.33	1496+51.00	17173.67
E.B. PASSING LANE	C.L.	1324+77.33	1327+79.32	301.99
W.B. PASSING LANE	C.L.	1324+77.33	1327+59.84	282.51
W.B. PASSING LANE	C.L.	1426+09.48	1431+93.98	584.50
W.B. PASSING LANE	C.L.	1494+51.00	1496+51.00	200.00
SUB-TOTAL 2 =				36165.34
USE =				36166.00
<b>TOTAL =</b>				<b>50199.00</b>
<b>USE =</b>				<b>50199.00</b>
				FT
<b>FAI-74 =</b>				<b>50199.00</b>
				FT

MODEL: 4-MODEL\MAR15  
 FILE: Mar15\_Plan\Bldg\Bldg.dwg  
 PROJECT: 05-70080\05-70080\CADD\Bldg\CADD\Bldg\Schedule.dwg  
 OFFICE: Bldg

USER NAME = GobleJR	DESIGNED -	REVISED -
	DRAWN -	REVISED -
PLOT SCALE = 40.0000 ' / in.	CHECKED -	REVISED -
PLOT DATE = 1/22/2020	DATE -	REVISED -

**STATE OF ILLINOIS  
DEPARTMENT OF TRANSPORTATION**

**SCHEDULE OF QUANTITIES**

SCALE: N-T-S      SHEET 3 OF 5 SHEETS      STA.      TO STA.

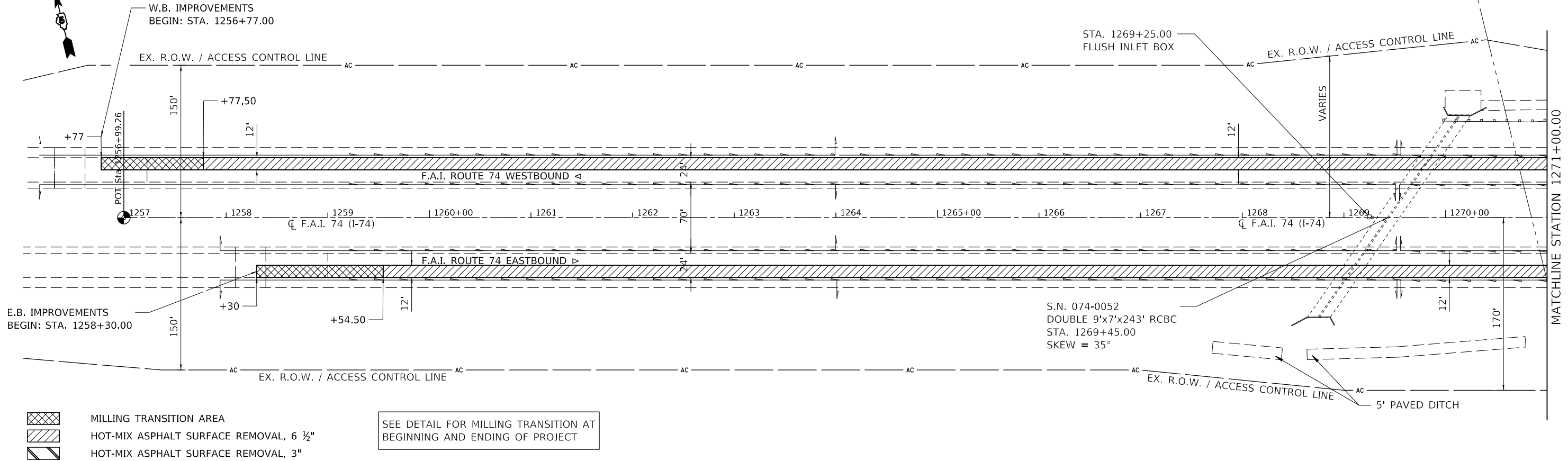
F.A.I. RTE.	SECTION	COUNTY	TOTAL SHEETS	SHEET NO.
74	(74.10-4.1)RS-2	*	34	10
* CHAMPAIGN & PIATT			CONTRACT NO. 70D80	
ILLINOIS FED. AID PROJECT				



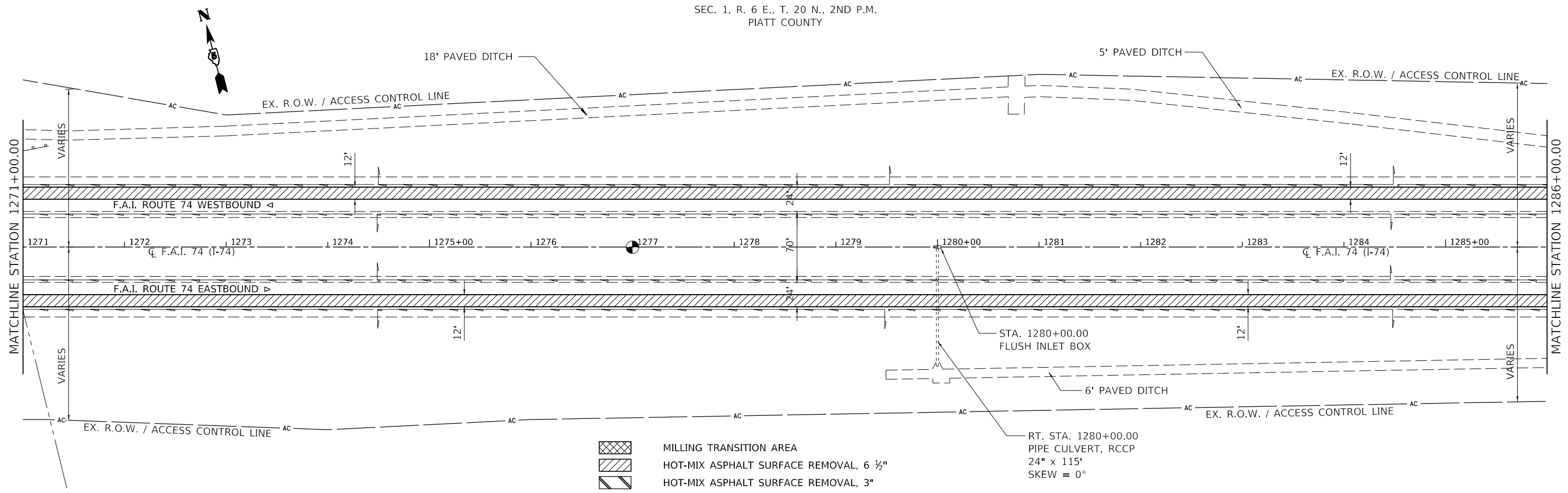




SEC. 2, R. 6 E., T. 20 N., 2ND P.M.  
PIATT COUNTY



SEC. 1, R. 6 E., T. 20 N., 2ND P.M.  
PIATT COUNTY



- MILLING TRANSITION AREA
- HOT-MIX ASPHALT SURFACE REMOVAL, 6 1/2"
- HOT-MIX ASPHALT SURFACE REMOVAL, 3"

MODEL: \\MODEL\NAMES  
 FILE: \\MODEL\PIATT\PIATT\DOT\Documents\DOT - Office\Bldg\1270080\CADD\DATA\CADD\INRES\05702080-514-14850.dgn

USER NAME = GobleJR	DESIGNED - JRG	REVISED -
	DRAWN - JRG	REVISED -
PLOT SCALE = 100.0000' / in.	CHECKED -	REVISED -
PLOT DATE = 1/22/2020	DATE -	REVISED -

**STATE OF ILLINOIS  
DEPARTMENT OF TRANSPORTATION**

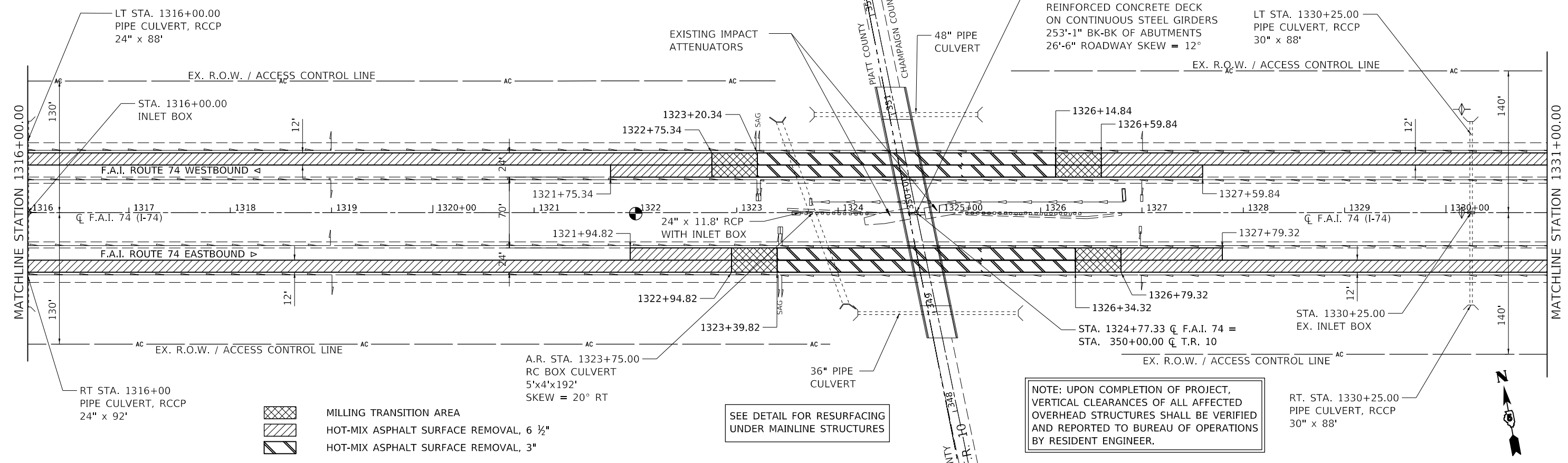
<b>PLAN SHEET</b>	
SCALE: 1" = 50'	SHEET 1 OF 9 SHEETS
STA. 1256+77	TO STA. 1286+00

F.A.I. RTE.	SECTION	COUNTY	TOTAL SHEETS	SHEET NO.
74	(74.10-4.1)RS-2		34	13
* CHAMPAIGN & PIATT			CONTRACT NO. 70D80	
		ILLINOIS	FED. AID PROJECT	



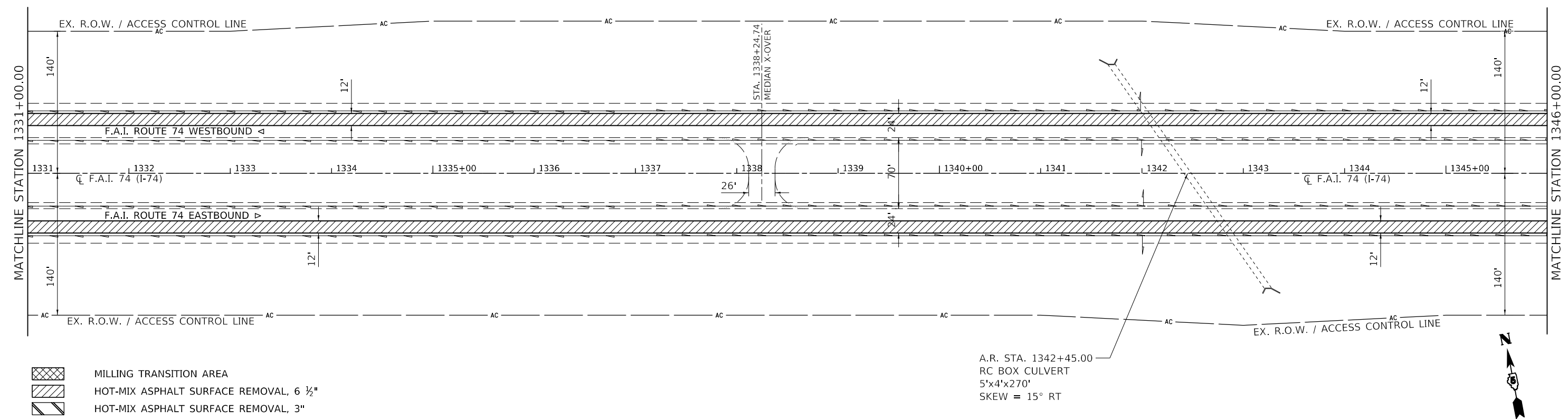
SEC. 12, R. 6 E., T. 20 N., 2ND P.M.  
PIATT COUNTY

SEC. 7, R. 6 E., T. 20 N., 2ND P.M.  
CHAMPAIGN COUNTY



NOTE: UPON COMPLETION OF PROJECT, VERTICAL CLEARANCES OF ALL AFFECTED OVERHEAD STRUCTURES SHALL BE VERIFIED AND REPORTED TO BUREAU OF OPERATIONS BY RESIDENT ENGINEER.

SEC. 7, R. 6 E., T. 20 N., 2ND P.M.  
CHAMPAIGN COUNTY



A.R. STA. 1342+45.00  
RC BOX CULVERT  
5'x4'x270'  
SKEW = 15° RT

MODEL: \\MODEL\NAME: FILE: \\NAME: \\PIATT\CHAMPAIGN\DOT\Documents\DOT\Office\Drawings\Projects\0570080\CAD\Drawings\0570080-CH-Plan50.dgn

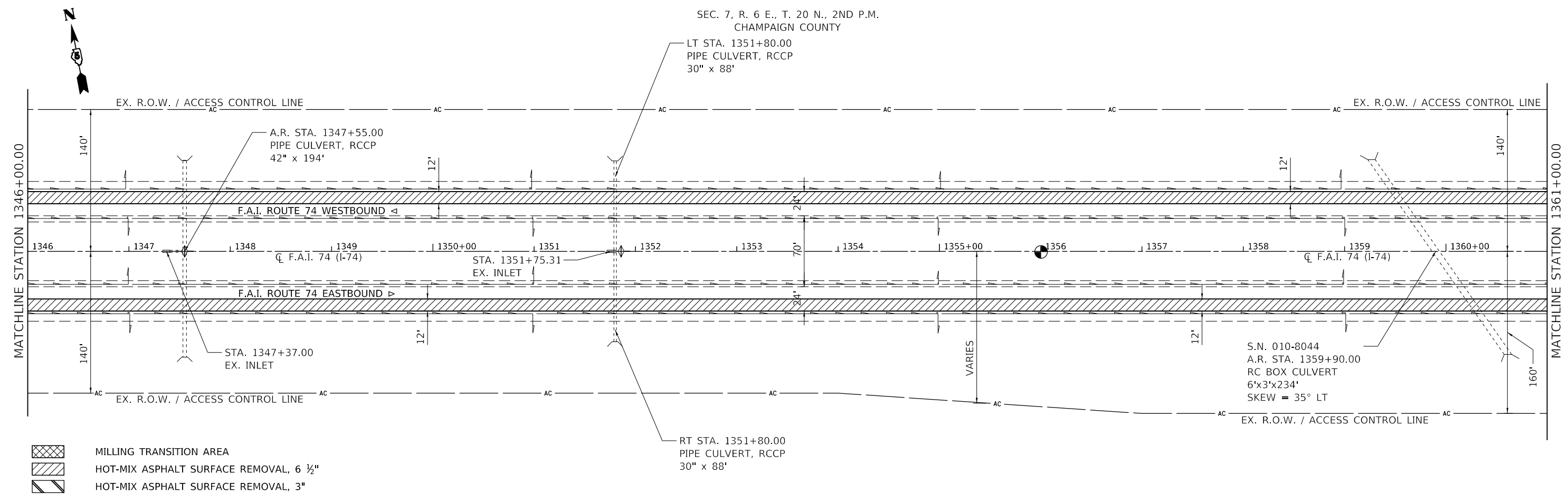
USER NAME = GobleJR	DESIGNED - JRG	REVISED -
DRAWN - JRG	REVISED -	
PLOT SCALE = 100,0000' / in.	CHECKED -	REVISED -
PLOT DATE = 1/22/2020	DATE -	REVISED -


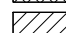

**STATE OF ILLINOIS  
DEPARTMENT OF TRANSPORTATION**

**PLAN SHEET**  
SCALE: 1" = 50' SHEET 3 OF 9 SHEETS STA. 1316+00 TO STA. 1346+00

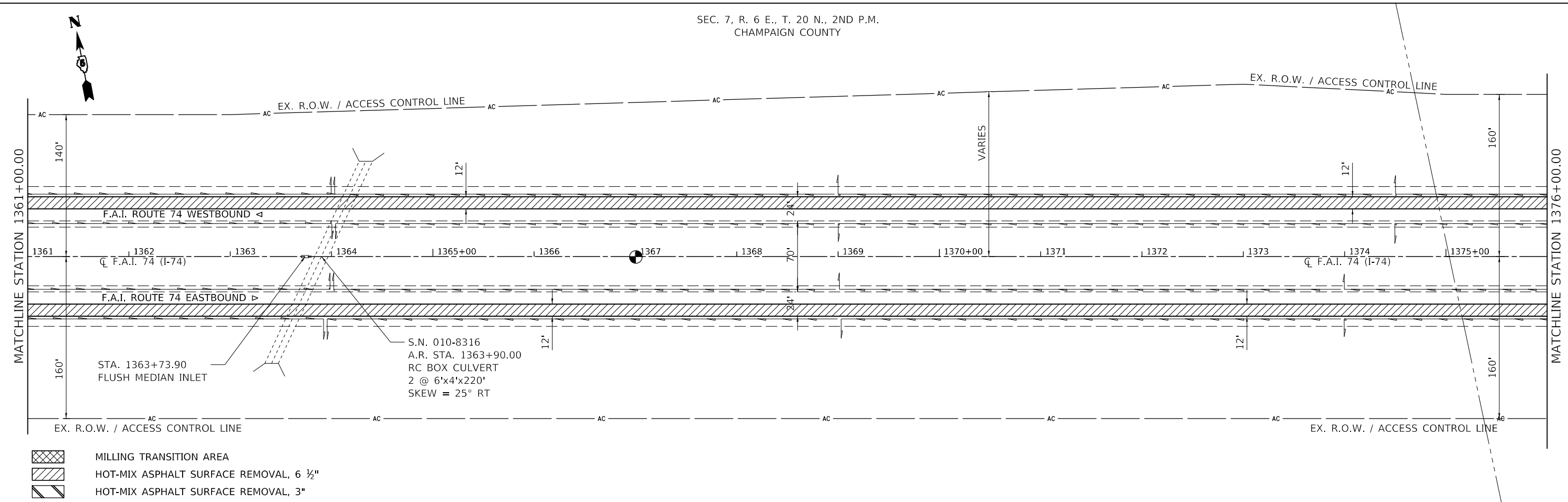
F.A.I. RTE.	SECTION	COUNTY	TOTAL SHEETS	SHEET NO.
74	(74,10-4,1)RS-2		34	15
* CHAMPAIGN & PIATT			CONTRACT NO. 70D80	
ILLINOIS FED. AID PROJECT				




SEC. 7, R. 6 E., T. 20 N., 2ND P.M.  
CHAMPAIGN COUNTY



-  MILLING TRANSITION AREA
-  HOT-MIX ASPHALT SURFACE REMOVAL, 6 1/2"
-  HOT-MIX ASPHALT SURFACE REMOVAL, 3"

SEC. 7, R. 6 E., T. 20 N., 2ND P.M.  
CHAMPAIGN COUNTY



-  MILLING TRANSITION AREA
-  HOT-MIX ASPHALT SURFACE REMOVAL, 6 1/2"
-  HOT-MIX ASPHALT SURFACE REMOVAL, 3"

MODEL: \\MODEL\NAME  
 FILE: NAME.dwg  
 PROJECT: \\PROJECT\NAME\DWG\PROJECTNAME.dwg  
 PLOT DATE: 1/22/2020

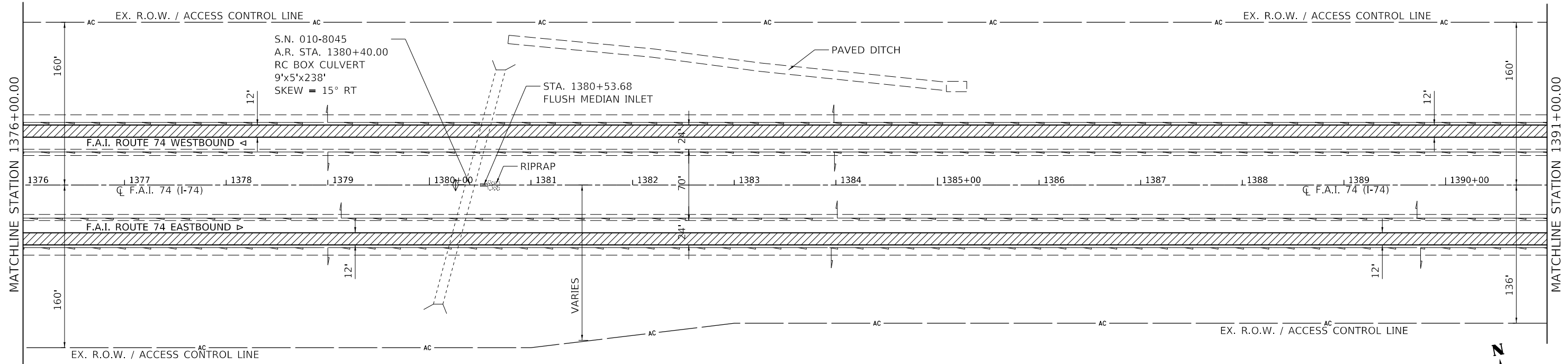
USER NAME = GobleJR	DESIGNED - JRG	REVISED -
	DRAWN - JRG	REVISED -
PLOT SCALE = 100.0000' / in.	CHECKED -	REVISED -
PLOT DATE = 1/22/2020	DATE -	REVISED -


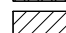
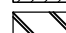
**STATE OF ILLINOIS  
DEPARTMENT OF TRANSPORTATION**

**PLAN SHEET**  
SCALE: 1" = 50' SHEET 4 OF 9 SHEETS STA. 1346+00 TO STA. 1376+00

F.A.I. RTE.	SECTION	COUNTY	TOTAL SHEETS	SHEET NO.
74	(74.10-4.1)RS-2	-	34	16
* CHAMPAIGN & PIATT			CONTRACT NO. 70D80	
ILLINOIS FED. AID PROJECT				

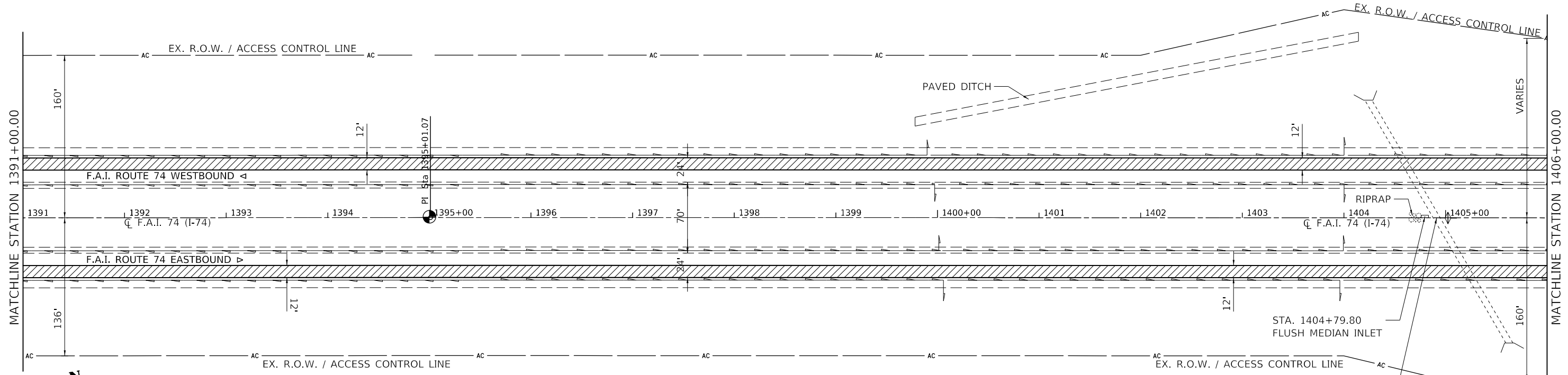
SEC. 8, R. 6 E., T. 20 N., 2ND P.M.  
CHAMPAIGN COUNTY






-  MILLING TRANSITION AREA
-  HOT-MIX ASPHALT SURFACE REMOVAL, 6 1/2"
-  HOT-MIX ASPHALT SURFACE REMOVAL, 3"



SEC. 8, R. 6 E., T. 20 N., 2ND P.M.  
CHAMPAIGN COUNTY



-  MILLING TRANSITION AREA
-  HOT-MIX ASPHALT SURFACE REMOVAL, 6 1/2"
-  HOT-MIX ASPHALT SURFACE REMOVAL, 3"

S.N. 010-8046  
A.R. STA. 1404+90.00  
RC BOX CULVERT  
6'x6'x275'  
SKEW = 30° RT



MODEL: s:\MODEL\MAR16... FILE: MAR16... PROJECT: 70DB80\CD\DATA\CAD\INRECS\70DB80-5-1-Plan50.dgn

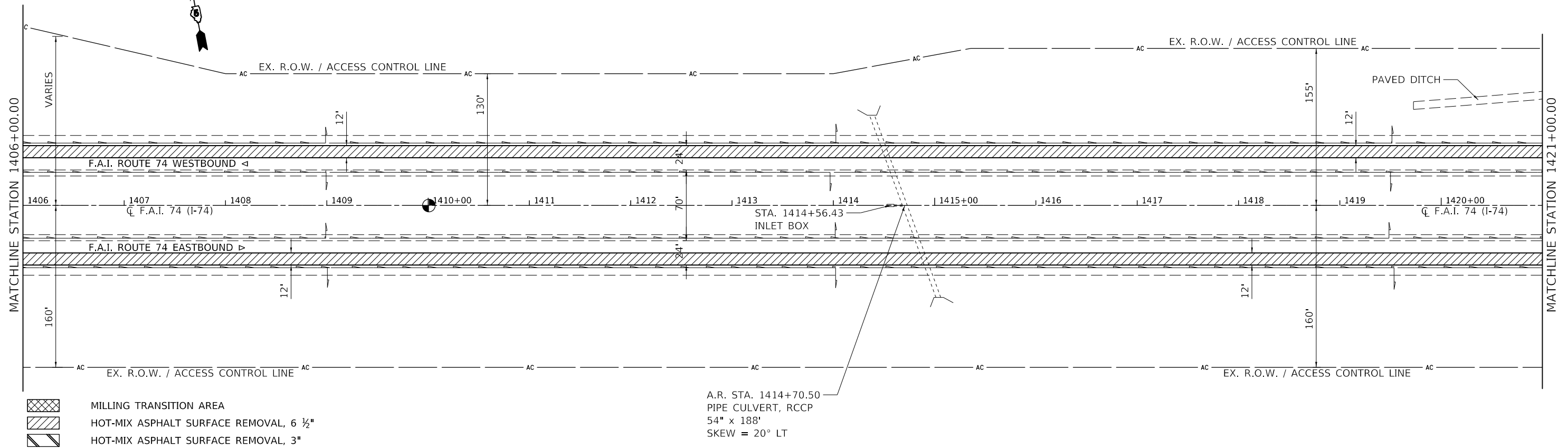
USER NAME = GobleJR	DESIGNED - JRG	REVISED -
DRAWN - JRG	REVISIONS -	
PLOT SCALE = 100.0000' / in.	CHECKED -	REVISED -
PLOT DATE = 1/22/2020	DATE -	REVISED -

**STATE OF ILLINOIS  
DEPARTMENT OF TRANSPORTATION**

**PLAN SHEET**  
SCALE: 1" = 50' SHEET 5 OF 9 SHEETS STA. 1376+00 TO STA. 1406+00

F.A.I. RTE.	SECTION	COUNTY	TOTAL SHEETS	SHEET NO.
74	(74.10-4.1)RS-2		34	17
* CHAMPAIGN & PIATT			CONTRACT NO. 70DB80	
ILLINOIS FED. AID PROJECT				

SEC. 8, R. 6 E., T. 20 N., 2ND P.M.  
CHAMPAIGN COUNTY

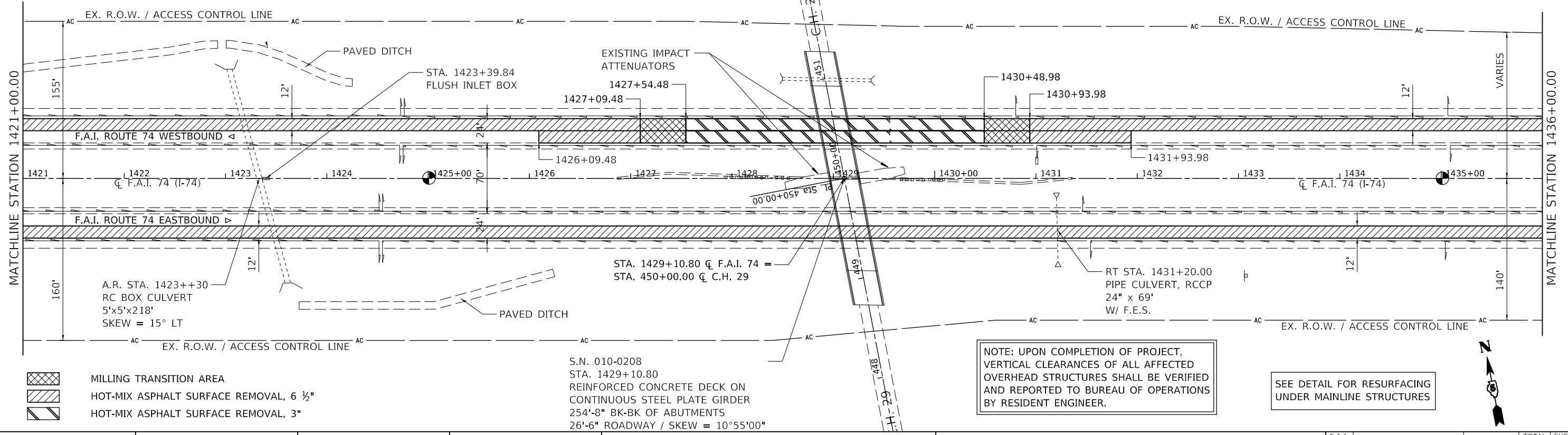


- MILLING TRANSITION AREA
- HOT-MIX ASPHALT SURFACE REMOVAL, 6 1/2"
- HOT-MIX ASPHALT SURFACE REMOVAL, 3"

A.R. STA. 1414+70.50  
PIPE CULVERT, R.C.C.P.  
54' x 188'  
SKEW = 20° LT

SEC. 8, R. 6 E., T. 20 N., 2ND P.M.  
CHAMPAIGN COUNTY

SEC. 9, R. 6 E., T. 20 N., 2ND P.M.  
CHAMPAIGN COUNTY



- MILLING TRANSITION AREA
- HOT-MIX ASPHALT SURFACE REMOVAL, 6 1/2"
- HOT-MIX ASPHALT SURFACE REMOVAL, 3"

S.N. 010-0208  
STA. 1429+10.80  
REINFORCED CONCRETE DECK ON  
CONTINUOUS STEEL PLATE GIRDER  
254'-8" BK-BK OF ABUTMENTS  
26'-6" ROADWAY / SKEW = 10°55'00"

NOTE: UPON COMPLETION OF PROJECT,  
VERTICAL CLEARANCES OF ALL AFFECTED  
OVERHEAD STRUCTURES SHALL BE VERIFIED  
AND REPORTED TO BUREAU OF OPERATIONS  
BY RESIDENT ENGINEER.

SEE DETAIL FOR RESURFACING  
UNDER MAINLINE STRUCTURES

MODEL: I:\MODEL\NAME: FILE: NAME: PROJECT: I:\PROJECTS\708080\CADD\DATA\CADD\INRES\05708080-514-1435.dgn

USER NAME = GobleJR	DESIGNED - JRG	REVISED -
PLOT SCALE = 100.0000' / in.	DRAWN - JRG	REVISED -
PLOT DATE = 1/22/2020	CHECKED -	REVISED -
	DATE -	REVISED -

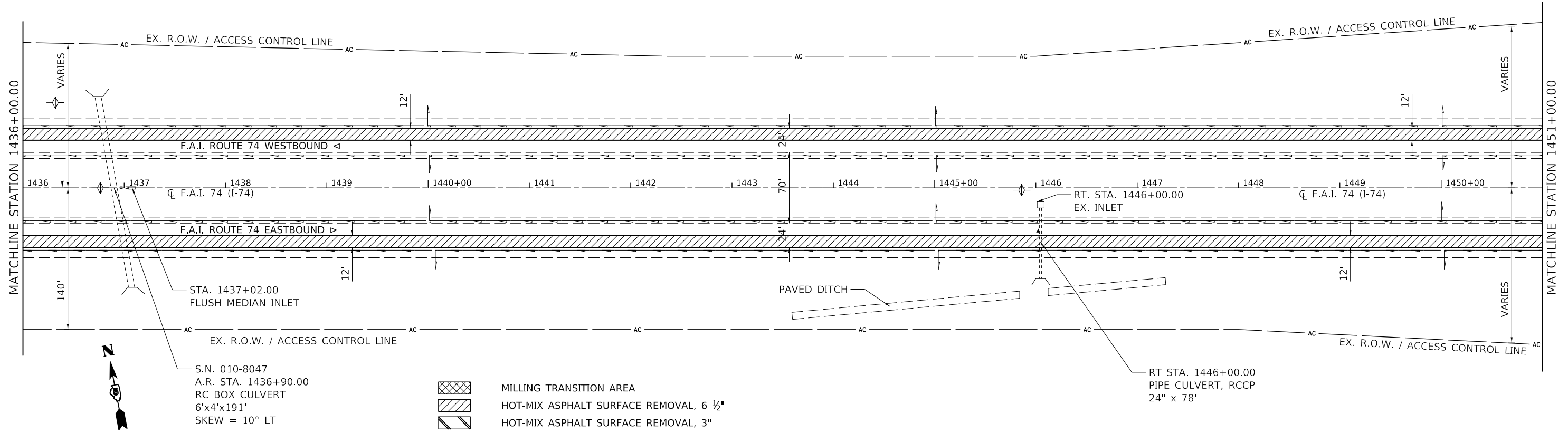
STATE OF ILLINOIS  
DEPARTMENT OF TRANSPORTATION

SCALE: 1" = 50' SHEET 6 OF 9 SHEETS STA. 1406+00 TO STA. 1436+00

PLAN SHEET

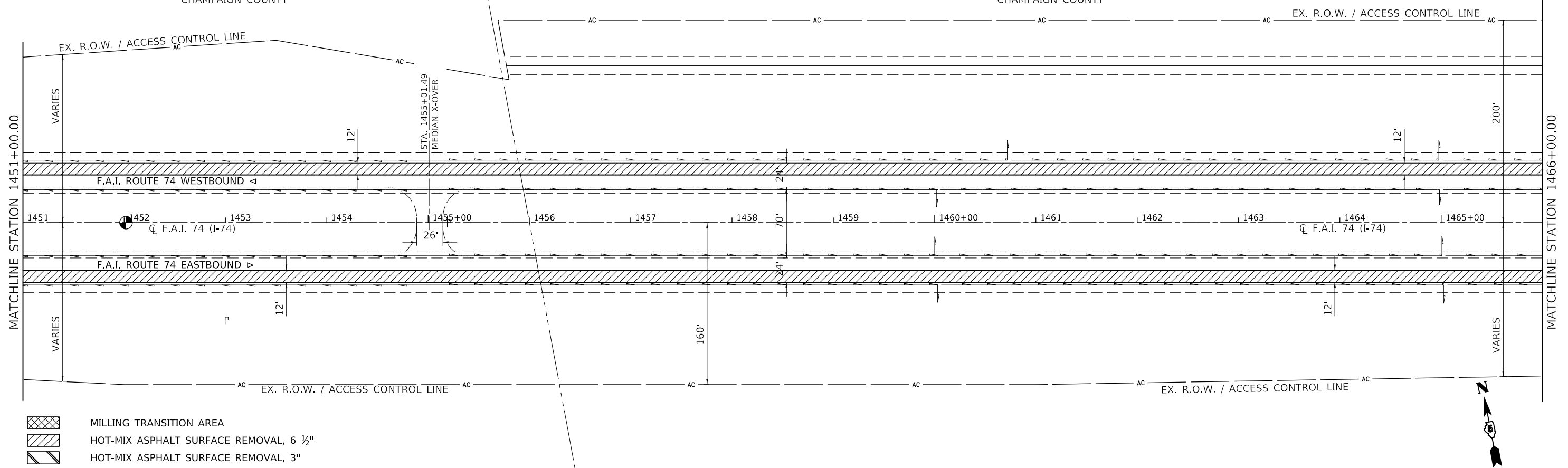
F.A.I. RTE.	SECTION	COUNTY	TOTAL SHEETS	SHEET NO.
74	(74.10-4.1)RS-2		34	18
* CHAMPAIGN & PIATT			CONTRACT NO. 708080	
		ILLINOIS	FED. AID PROJECT	

SEC. 9, R. 6 E., T. 20 N., 2ND P.M.  
CHAMPAIGN COUNTY



SEC. 9, R. 6 E., T. 20 N., 2ND P.M.  
CHAMPAIGN COUNTY

SEC. 10, R. 7 E., T. 20 N., 2ND P.M.  
CHAMPAIGN COUNTY



MODEL: \\MODEL\NAME  
 FILE: NAME.dwg  
 PROJECT: \\PROJECT\NAME  
 OFFICE: \\OFFICE\NAME  
 DATE: 1/22/2020

- MILLING TRANSITION AREA
- HOT-MIX ASPHALT SURFACE REMOVAL, 6 1/2"
- HOT-MIX ASPHALT SURFACE REMOVAL, 3"

USER NAME = GobleJR	DESIGNED - JRG	REVISED -	
	DRAWN - JRG	REVISED -	
PLOT SCALE = 100,0000' / in.	CHECKED -	REVISED -	
PLOT DATE = 1/22/2020	DATE -	REVISED -	

**STATE OF ILLINOIS  
DEPARTMENT OF TRANSPORTATION**

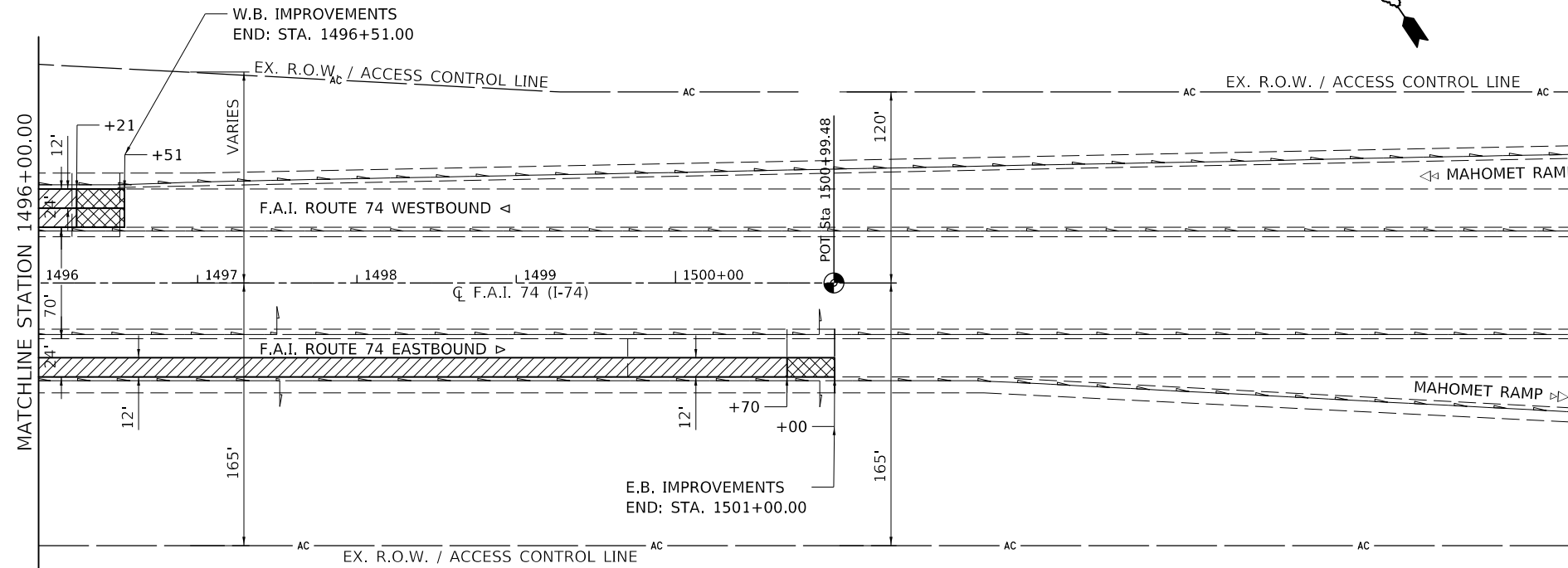
**PLAN SHEET**


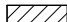

SCALE: 1" = 50'    SHEET 7 OF 9 SHEETS    STA. 1436+00 TO STA. 1466+00

F.A.I. RTE.	SECTION	COUNTY	TOTAL SHEETS	SHEET NO.
74	(74.10-4.1)RS-2		34	19
* CHAMPAIGN & PIATT			CONTRACT NO. 70D80	
ILLINOIS FED. AID PROJECT				







-  MILLING TRANSITION AREA
-  HOT-MIX ASPHALT SURFACE REMOVAL, 6 1/2"
-  HOT-MIX ASPHALT SURFACE REMOVAL, 3"

SEE DETAIL FOR MILLING TRANSITION AT  
BEGINNING AND ENDING OF PROJECT

MODEL: \\MODEL\NAMES  
 FILE: \\models\p\champaign\74\74080\CADD\DATA\CAD\INSETS\0570D80-514-50.dgn

USER NAME = GobleJR	DESIGNED - JRG	REVISED -
	DRAWN - JRG	REVISED -
PLOT SCALE = 100,0000' / in.	CHECKED -	REVISED -
PLOT DATE = 1/22/2020	DATE -	REVISED -

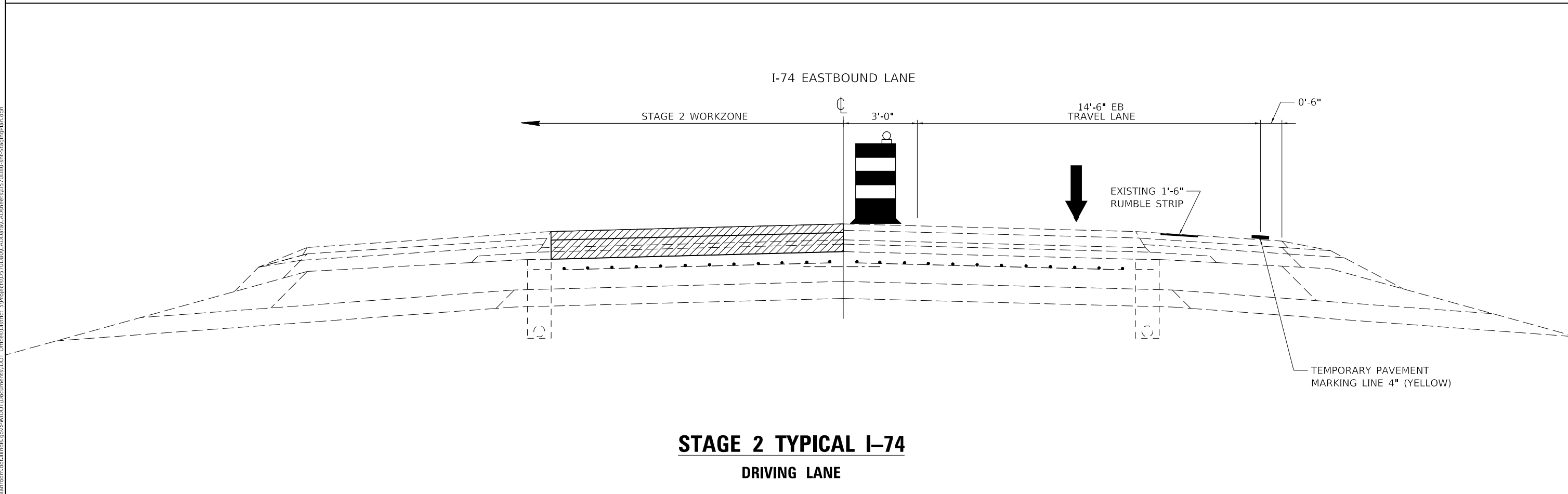
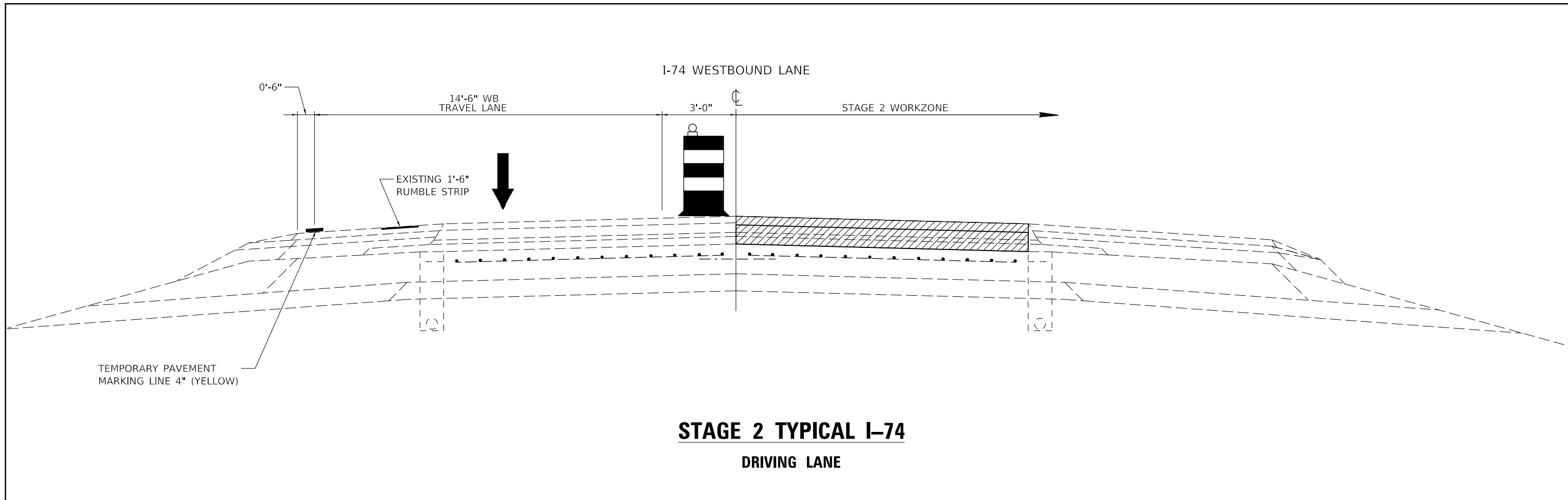
**STATE OF ILLINOIS  
DEPARTMENT OF TRANSPORTATION**

**PLAN SHEET**

SCALE: 1" = 50' SHEET 9 OF 9 SHEETS STA. 1496+00 TO STA. 1501+00

F.A.I. RTE.	SECTION	COUNTY	TOTAL SHEETS	SHEET NO.
74	(74,10-4,1)RS-2	*	34	21
* CHAMPAIGN & PIATT			CONTRACT NO. 70D80	
ILLINOIS		FED. AID PROJECT		





MODEL: S:\MODEL\MHFE  
 FILE: MHFE.dwg  
 PROJECT: 70D80-1-1RS-2  
 OFFICE: CHAMPAIGN  
 DATE: 1/22/2020

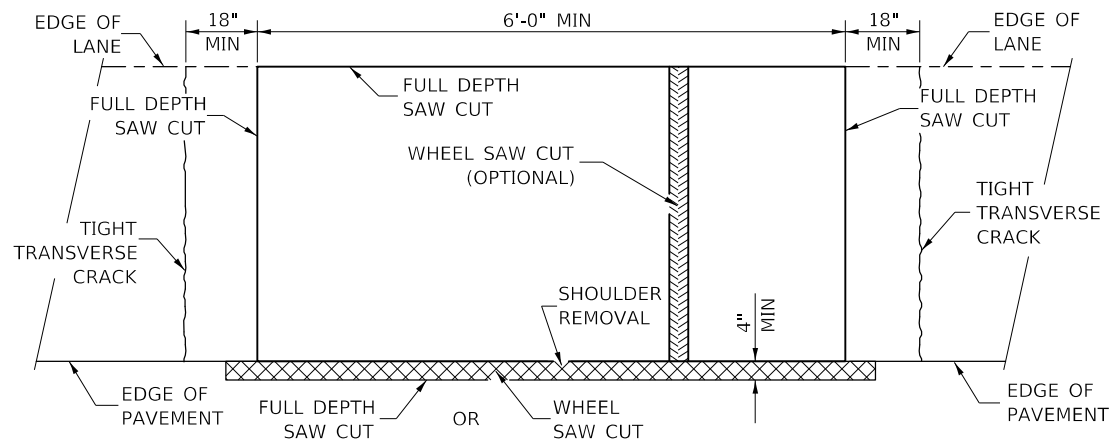
USER NAME = GobleJR	DESIGNED - JRG	REVISED -
	DRAWN - JRG	REVISED -
PLOT SCALE = 40.0000' / in.	CHECKED -	REVISED -
PLOT DATE = 1/22/2020	DATE -	REVISED -

**STATE OF ILLINOIS**  
**DEPARTMENT OF TRANSPORTATION**

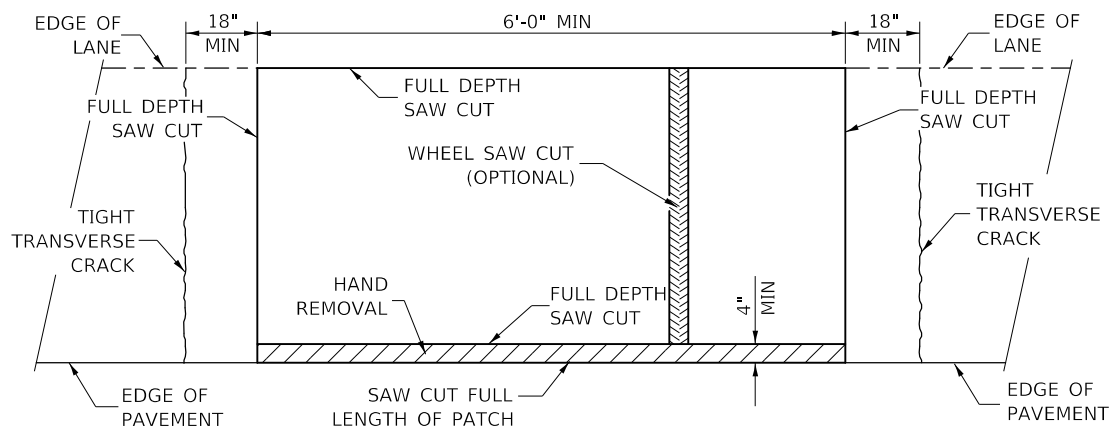
<b>PROPOSED STAGING PLAN</b>			
SCALE: N-T-S	SHEET 2	OF 2 SHEETS	STA. TO STA.

F.A.I. RTE.	SECTION	COUNTY	TOTAL SHEETS	SHEET NO.
74	(74,10-4,1)RS-2	*	34	23
* CHAMPAIGN & PIATT			CONTRACT NO. 70D80	
ILLINOIS FED. AID PROJECT				

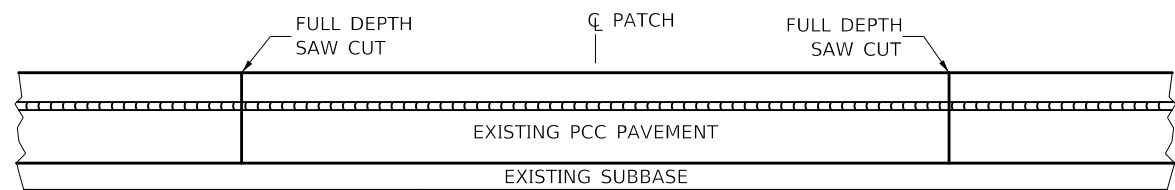




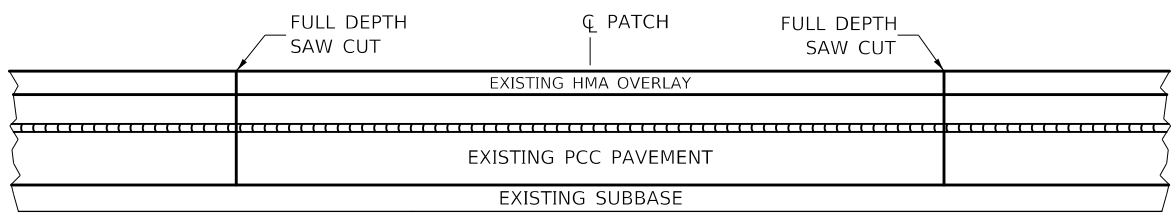
**PAVEMENT SAWING DETAIL  
(HMA SHOULDER)**



**PAVEMENT SAWING DETAIL  
(PCC SHOULDER)**

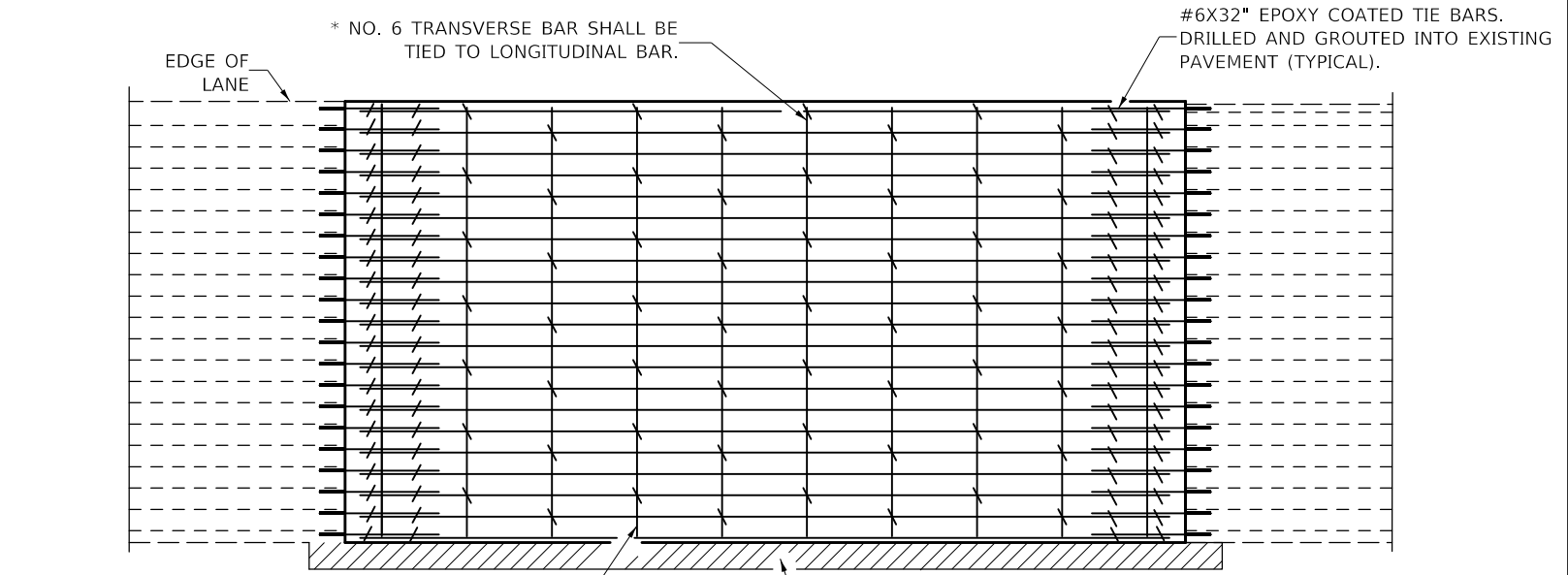


**EXISTING PAVEMENT WITHOUT HMA SURFACE**

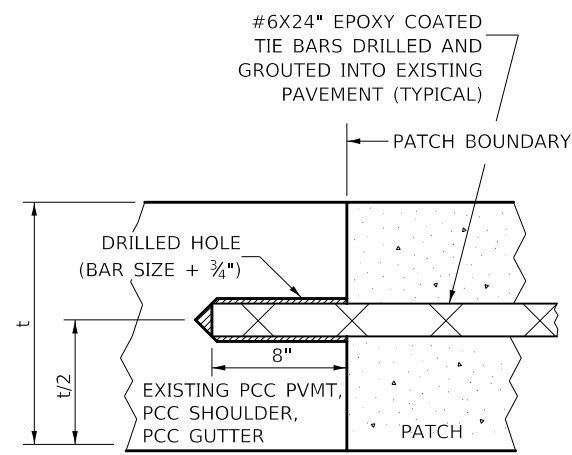


**EXISTING PAVEMENT WITH HMA SURFACE**

**PAVEMENT SAWING DETAIL FOR CLASS A PATCHING  
(CRC PAVEMENT)**



**PAVEMENT REINFORCEMENT DETAIL**



**LONGITUDINAL CONSTRUCTION JOINT**

PATCHES MORE THAN 20' IN LENGTH SHALL BE TIED TO ADJACENT PAVEMENT, PCC SHOULDERS OR PCC CURB AND GUTTER WITH #6x24" EPOXY COATED TIE BARS AT 36" CENTERS.

**NOTES:**

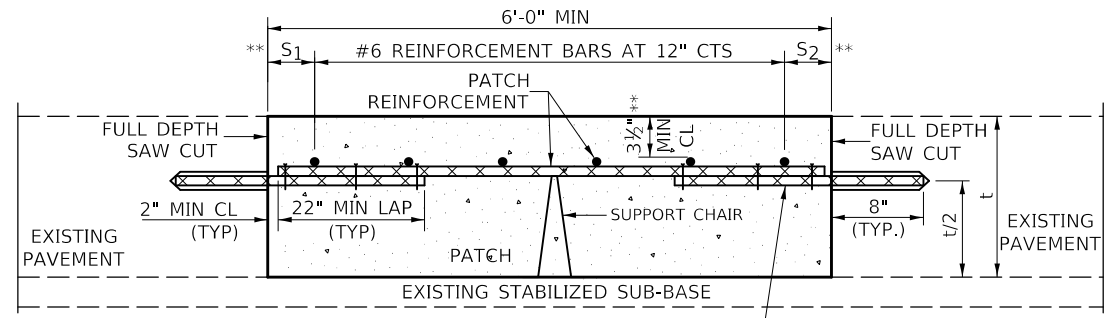
LONGITUDINAL REINFORCEMENT SPACING; 12".

SPACING OF NEW LONGITUDINAL REINFORCEMENT AND NEW LONGITUDINAL TIE BARS SHALL MATCH SPACING OF EXISTING REINFORCEMENT AND SHALL BE TIED TOGETHER WITH A MINIMUM OF TWO TIES PER BAR.

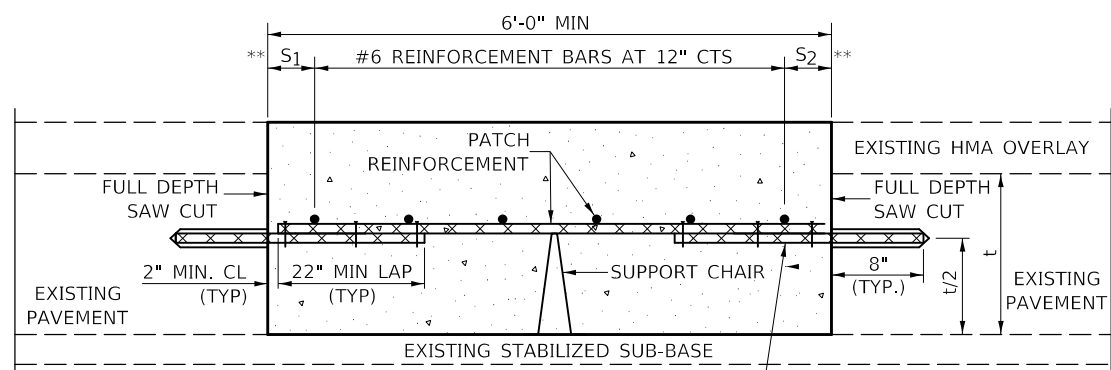
SUPPORT CHAIRS SHALL BE REQUIRED WHENEVER PATCH LENGTH EXCEEDS 6'-0"

\* EVERY THIRD INTERSECTION MUST BE TIED. WHEN THE MINIMUM CLEARANCE CANNOT BE OBTAINED WITH THE TRANSVERSE REBAR ON TOP, THEN THE TRANSVERSE REBAR SHALL BE TIED TO THE BOTTOM OF THE LONGITUDINAL REBAR.

\*\* VARIABLES WHERE S<sub>1</sub> AND S<sub>2</sub> ARE 2 1/2" MIN. AND 12" MAX.



**WITHOUT HMA OVERLAY**



**WITH HMA OVERLAY**

**PATCHING DETAIL FOR CLASS A PATCHING  
(CRC PAVEMENT)**

MODEL: 410001.MXIT; FILE: 410001.dwg; PLOT DATE: 1/22/2020; PROJECT: 70D80; SHEET: 25 OF 34

USER NAME = GobleJR	DESIGNED -	REVISED -
PLOT SCALE = 40.0000' / in.	DRAWN -	REVISED -
PLOT DATE = 1/22/2020	CHECKED -	REVISED -
	DATE -	REVISED -

**STATE OF ILLINOIS  
DEPARTMENT OF TRANSPORTATION**

**CLASS A PATCHING (SPECIAL)**

SCALE: NONE SHEET 1 OF 2 SHEETS STA. TO STA.

F.A.I. RTE.	SECTION	COUNTY	TOTAL SHEETS	SHEET NO.
74	(74.10-4.1)RS-2		34	25
CONTRACT NO. 70D80				
ILLINOIS FED. AID PROJECT				

\* CHAMPAIGN & PIATT

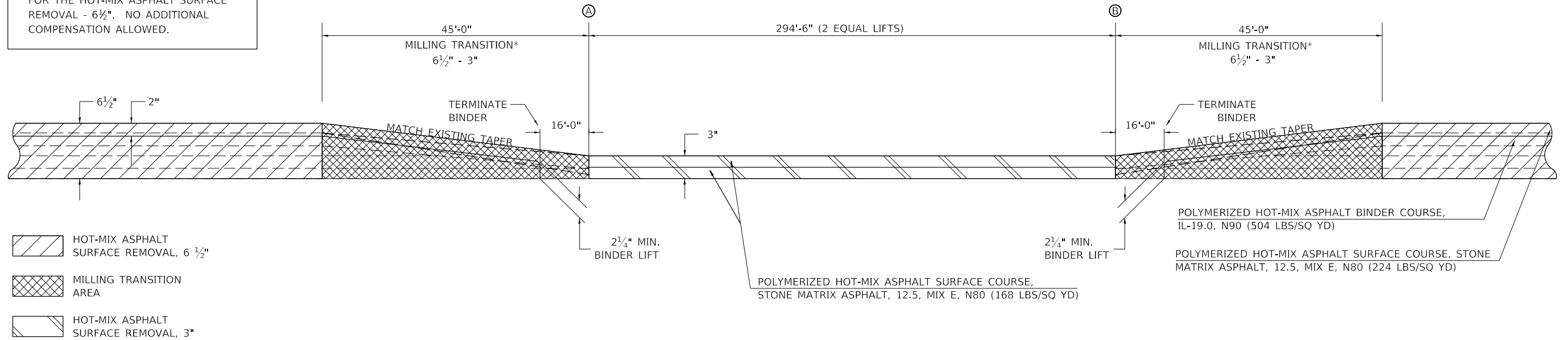




# DETAIL FOR MILLING & RESURFACING MAINLINE PAVEMENT UNDER S.N. 010-0207 & 010-0208

**(EASTBOUND) STATION 1323 + 39.82 (A) TO STATION 1326 + 34.32 (B)**  
**(WESTBOUND) STATION 1323 + 20.34 (A) TO STATION 1326 + 14.84 (B)**  
**(WESTBOUND) STATION 1427 + 54.48 (A) TO STATION 1430 + 48.98 (B)**

NOTE:  
 AREA OF MILLING TRANSITION SHALL  
 BE INCLUDED IN CONTRACT UNIT PRICE  
 FOR THE HOT-MIX ASPHALT SURFACE  
 REMOVAL - 6 1/2". NO ADDITIONAL  
 COMPENSATION ALLOWED.



MODEL: \\MODEL\MHFS  
 FILE: \\MAILS\_Plan\p10m\com\ad\illinois.gov\PI\DOT\Documents\DOT\_Offices\District 5\Projects\01570080\CADD\01570080-01-01-01-01.dgn

USER NAME = GobleJR	DESIGNED - JRG	REVISED -
	DRAWN - JRG	REVISED -
PLOT SCALE = 40,0000 ' / in.	CHECKED -	REVISED -
PLOT DATE = 1/22/2020	DATE -	REVISED -

**STATE OF ILLINOIS  
 DEPARTMENT OF TRANSPORTATION**

**DETAIL FOR MILLING & RESURFACING TRANSITIONS**

SCALE: N-T-S    SHEET 2 OF 2 SHEETS    STA.    TO STA.

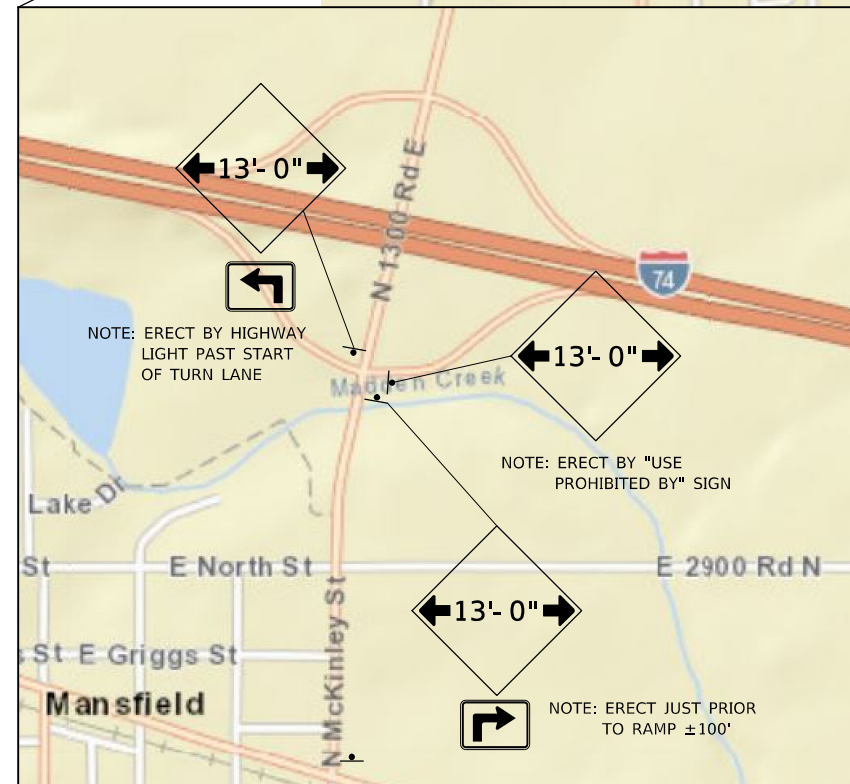
F.A.I. RTE.	SECTION	COUNTY	TOTAL SHEETS	SHEET NO.
74	(74,10-4,1)RS-2	*	34	28
* CHAMPAIGN & PIATT			CONTRACT NO. 70D80	
ILLINOIS FED. AID PROJECT				



# WIDTH RESTRICTION SIGNING DETAIL – MANSFIELD



\*SEE DISTRICT 5 DETAIL NO. X7200201



MODEL: S:\MODEL\MANSFIELD\FILE: Mansfield\Project\70D80\CADD\Drawings\DOT\Office\Detail\5\Project\70D80\CADD\Drawings\DOT\Office\Detail\5\Project\70D80-5-1-Details.dgn

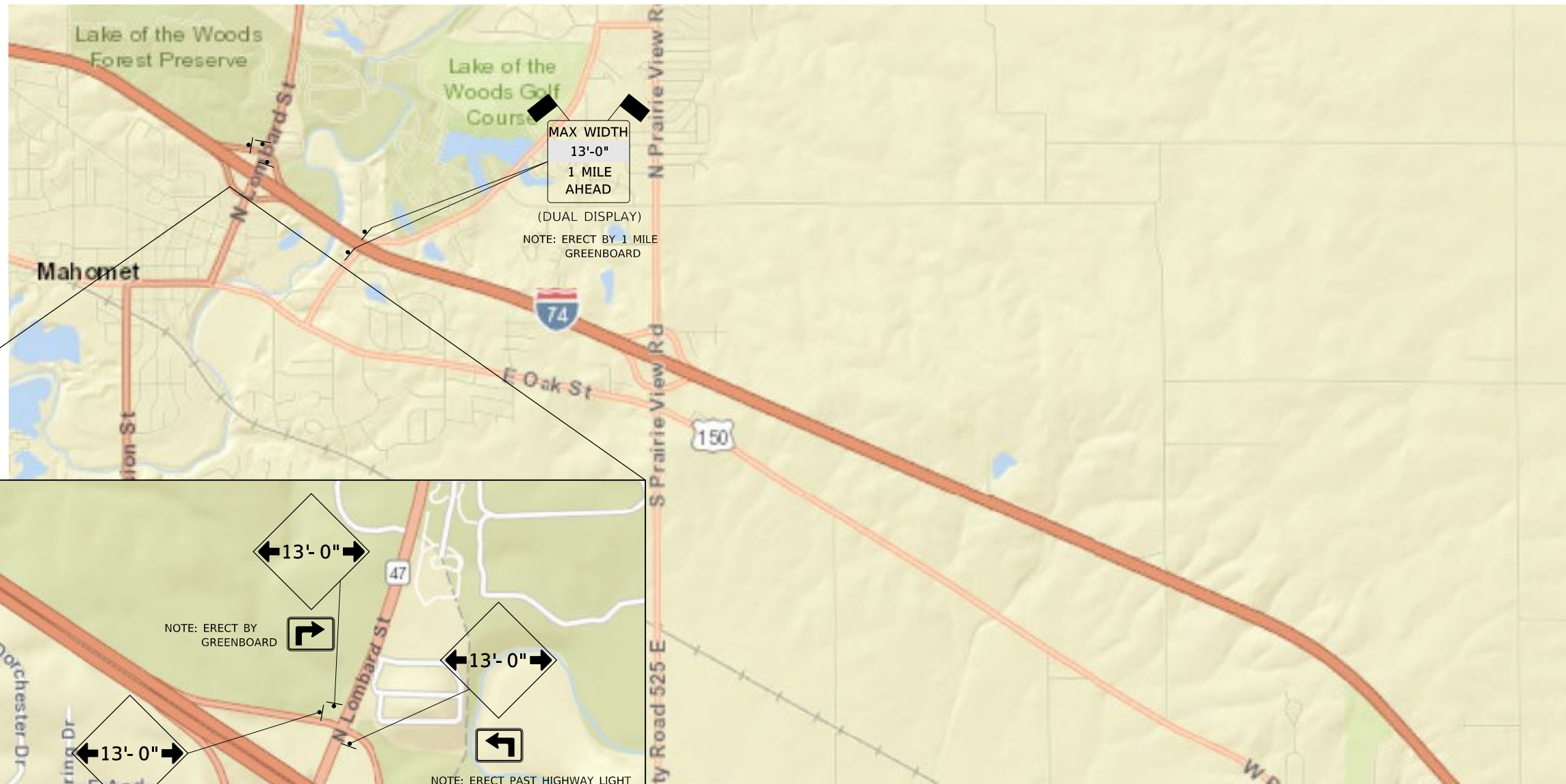
USER NAME = GobleJR	DESIGNED - JRG	REVISED -
	DRAWN - JRG	REVISED -
PLOT SCALE = 40.0000' / in.	CHECKED -	REVISED -
PLOT DATE = 1/22/2020	DATE -	REVISED -

**STATE OF ILLINOIS  
DEPARTMENT OF TRANSPORTATION**

WIDTH RESTRICTION SIGNING DETAIL			
SCALE: N-T-S	SHEET 1	OF 2 SHEETS	STA. TO STA.

F.A.I. RTE.	SECTION	COUNTY	TOTAL SHEETS	SHEET NO.
74	(74,10-4,1)RS-2	-	34	29
* CHAMPAIGN & PIATT			CONTRACT NO. 70D80	
ILLINOIS FED. AID PROJECT				

# WIDTH RESTRICTION SIGNING DETAIL – MAHOMET



\*SEE DISTRICT 5 DETAIL NO. X7200201

MODEL: \\MODEL\MHFE  
 FILE: \\MAILS: \pub\mcom\ad\illinois\dot\Documents\DOT\_Offices\District 5\Projects\0570080\CADD\0570080-511-CAD\Detail.dgn

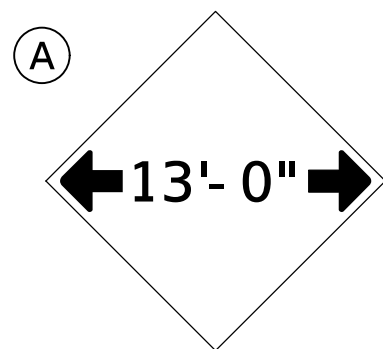
USER NAME = GobleJR	DESIGNED - JRG	REVISED -
	DRAWN - JRG	REVISED -
PLOT SCALE = 40.0000' / in.	CHECKED -	REVISED -
PLOT DATE = 1/22/2020	DATE -	REVISED -

**STATE OF ILLINOIS  
DEPARTMENT OF TRANSPORTATION**

## WIDTH RESTRICTION SIGNING DETAIL

SCALE: N-T-S      SHEET 2 OF 2 SHEETS      STA.      TO STA.

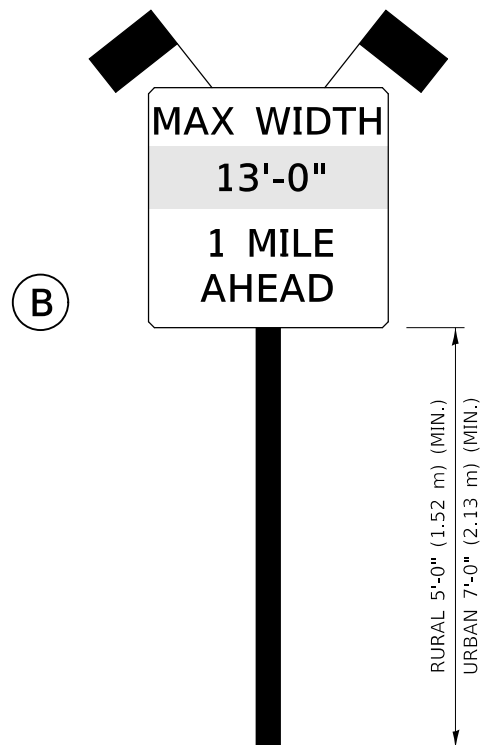
F.A.I. RTE.	SECTION	COUNTY	TOTAL SHEETS	SHEET NO.
74	(74,10-4,1)RS-2	-	34	30
* CHAMPAIGN & PIATT			CONTRACT NO. 70D80	
ILLINOIS FED. AID PROJECT				



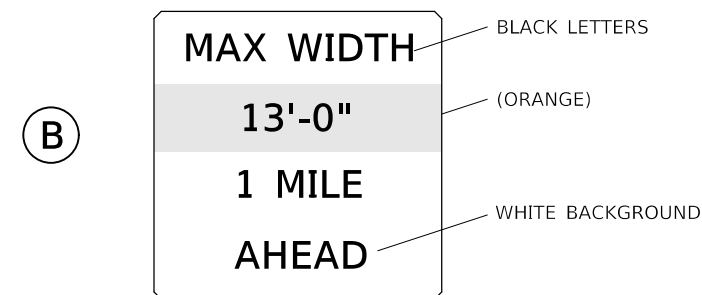
**W12-2(O)-48"x48"(1200x1200)**

SIGN (A) 2 SIGNS - W12-2(O)-48"x48"(1200x1200) ARE TO BE PLACED AS SHOWN IN THE PLANS OR AS DIRECTED BY THE ENGINEER.

SIGN (B) 2 SIGNS - (SIGN PANEL, TYPE II) AS SHOWN ARE TO BE PLACED AS SHOWN IN THE PLANS OR AS DIRECTED BY THE ENGINEER.



**SIGN PANEL, TYPE II**



**W12-I103(O)-48"x48"(1200x1200)  
"D" LETTERS/NUMBERS**

### GENERAL NOTES

1. ALL TRAFFIC CONTROL DEVICES SHALL BE FURNISHED, ERECTED AND MAINTAINED BY THE CONTRACTOR.
2. ALL (B) SIGNS SHALL HAVE FLAGS INSTALLED UNLESS OTHERWISE DIRECTED.
3. LOCATIONS OF TRAFFIC CONTROL DEVICES MAY BE ADJUSTED BY THE ENGINEER.
4. ALL TRAFFIC CONTROL SHOWN ON THIS SHEET SHALL BE PAID FOR AT THE CONTRACT LUMP SUM PRICE FOR WIDTH RESTRICTION SIGNING.
5. ALL SIGNS SHALL BE POST MOUNTED UNLESS OTHERWISE DIRECTED.
6. ALL SIGNS SHOWN ORANGE (O) SHALL BE FLUORESCENT ORANGE.
7. ALL SIGNS SHOWN SHALL CONSIST OF THE CURRENT RETROREFLECTIVE SHEETING REQUIREMENTS AS OUTLINED IN SECTION 1106.01 OF THE STANDARD SPECIFICATIONS BOOK.

Note: All dimensions are in INCHES (millimeters) unless otherwise shown.

MODEL: \\MODEL\MARIS  
FILE: \\MARIS\_Plan\Illinois\GIS\Projects\70D80\CADD\DATA\CADD\INRES\0570D80-511-01-01-01.dgn

USER NAME = GobleJR	DESIGNED -	REVISED - 05/08
	DRAWN -	REVISED - 10/08 KJT
PLOT SCALE = 40.0000 ' / in.	CHECKED -	REVISED - 07/09 KJT
PLOT DATE = 1/22/2020	DATE -	REVISED - 03/11 KJT

**STATE OF ILLINOIS  
DEPARTMENT OF TRANSPORTATION**

**WIDTH RESTRICTION SIGNING**

SCALE: SHEET 1 OF 1 SHEETS STA. TO STA.

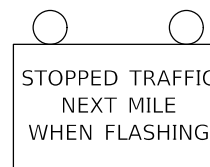
**DISTRICT 5 DETAIL NO. X7200201**


F.A.I. RTE.	SECTION	COUNTY	TOTAL SHEETS	SHEET NO.
74	(74.10-4.1)RS-2	*	34	31
* CHAMPAIGN & PIATT			CONTRACT NO. 70D80	
ILLINOIS		FED. AID PROJECT		





# REAL-TIME TRAFFIC CONTROL SYSTEM WESTBOUND



 Single Portable Changeable Message Sign placed 1/2 mile in advance of 4th RTTCS board. It shall read "RIGHT/LEFT LANE CLOSED/5 MILES AHEAD"  
 •This Portable Changeable Message Sign is included in Standard 701400

 Speed Sensor  
 •Paid for as Real-Time Traffic Control Monitoring Sensor Unit

**NOTES:**

The number of RTTCS Static Warning Signs may be changed as directed by the Engineer. Relocation of RTTCS Static Warning Signs is included in the RTTCS pay items.

MODEL: \\MODEL\MHFE  
 FILE: \\MAILS: \pub\lhammond\ad\illinois\pww\DOT\Documents\DOT - Offices\Illinet 5\Projects\0570080\CAD\Drawings\0570080-RTTCS.dgn

USER NAME = GobleJR	DESIGNED - JRG	REVISED -
	DRAWN - JRG	REVISED -
PLOT SCALE = 100,0000' / in.	CHECKED -	REVISED -
PLOT DATE = 1/22/2020	DATE - 07/23/2019	REVISED -

**STATE OF ILLINOIS  
DEPARTMENT OF TRANSPORTATION**

**REAL-TIME TRAFFIC CONTROL SYSTEM**

SCALE: N-T-S    SHEET 2 OF 2 SHEETS    STA.    TO STA.

F.A.I. RTE.	SECTION	COUNTY	TOTAL SHEETS	SHEET NO.
74	(74,10-4,1)RS-2	*	34	33
* CHAMPAIGN & PIATT			CONTRACT NO. 70D80	
ILLINOIS FED. AID PROJECT				

