

063

04-24-2020 LETTING ITEM 063

STATE OF ILLINOIS
DEPARTMENT OF TRANSPORTATION

R. & P. R.T.E.	SECTION	COUNTY	TOTAL SHEETS	SHEET NO.
75	(6) BDR, BJR	SANGAMON	9	1
CONTRACT NO. 72L71				

FOR INDEX OF SHEETS, SEE SHEET NO. 2

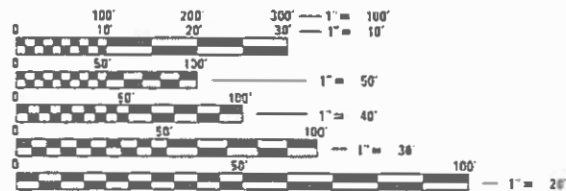
PROPOSED CONTRACT MAINTENANCE

FAP ROUTE 75 (IL 29)
SECTION (6) BDR, BJR
PROJECT (STATE ONLY)
BRIDGE DECK REPAIRS
SANGAMON COUNTY

C-96-060-20



PROJECT LOCATION
SN 064-0042
IL 29 NB OVER
S FORK SANGAMON R
2.4 MI SE I-55



FULL SIZE PLANS HAVE BEEN PREPARED USING STANDARD ENGINEERING SCALES. REDUCED SIZED PLANS WILL NOT CONFORM TO STANDARD SCALES. IN MAKING MEASUREMENTS ON REDUCED PLANS, THE ABOVE SCALES MAY BE USED.

J.U.L.I.E.
JOINT UTILITY LOCATION INFORMATION FOR EXCAVATION
1-800-892-0123
OR 811

BRIDGE MAINTENANCE ENGINEER: BRANDON DUDLEY - (217) 785-9290

GROSS LENGTH = 413 FT. = 0.08 MILE
NET LENGTH = 413 FT. = 0.08 MILE

CONTRACT NO. 72L71

STATE OF ILLINOIS
DEPARTMENT OF TRANSPORTATION

SUBMITTED January 30, 2020
[Signature] REGIONAL ENGINEER

March 20, 2020
[Signature] ENGINEER OF DESIGN AND ENVIRONMENT

March 20, 2020
[Signature] DIRECTOR OF HIGHWAYS PROJECT IMPLEMENTATION

PRINTED BY THE AUTHORITY
OF THE STATE OF ILLINOIS

INDEX OF SHEETS




- 1 COVER SHEET
- 2 INDEX, STANDARDS, SIGNATURES, & GENERAL NOTES
- 3 SUMMARY OF QUANTITIES
- 4 STAGING PLAN
- 5-6 TRAFFIC CONTROL PLAN
- 7-9 SN 084-0042 BRIDGE PLANS

STANDARDS

- 000001-07
- 001001-02
- 001006
- 701101-05
- 701106-02
- 701423-10
- 701901-08
- 704001-08
- 780001-05
- 782006-01

GENERAL NOTES:

AREAS OF DECK REPAIRS SHOWN ARE ESTIMATED. THE ENGINEER SHALL SHOW ACTUAL LOCATIONS OF DECK REPAIRS ON AS-BUILT PLANS.

STATE OF ILLINOIS DEPARTMENT OF TRANSPORTATION DIVISION OF HIGHWAYS DISTRICT 6	
EXAMINED	January 27, 2020
 ENGINEER OF OPERATIONS	
EXAMINED	January 27, 2020
 ENGINEER OF PROJECT IMPLEMENTATION	
EXAMINED	January 27, 2020
 ENGINEER OF PROGRAM DEVELOPMENT	

MODEL: Default
FILE: \\nas102.csc.state.il.us\Operations\Bridges\Bridges\Plans_CAD\72L71 - 084-0042_pacth\hplbrsheet.dgn

	USER NAME = dudleybm	DESIGNED -	REVISED -	STATE OF ILLINOIS DEPARTMENT OF TRANSPORTATION	INDEX, STANDARDS, GENERAL NOTES, & SIGNATURES	F.A.P. RTE.	SECTION	COUNTY	TOTAL SHEETS	SHEET NO.	
		DRAWN -	REVISED -			75	(6) BDR, BJR	SANGAMON	9	2	
	PLOT SCALE = 100.0000' / in.	CHECKED -	REVISED -			CONTRACT NO. 72L71					
	PLOT DATE = 1/29/2020	DATE -	REVISED -			ILLINOIS FED. AID PROJECT					
SCALE:		SHEET OF SHEETS		STA. TO STA.							

0-02174-6021
SN 084-0042
100% STATE

0-02174-6021
SN 084-0042
100% STATE

CODE NO.	ITEM	UNIT	TOTAL QUANTITY	BRIDGE/URBAN
				0047 SANGAMON
50102400	CONCRETE REMOVAL	CU YD	0.1	0.1
52000015	PREFORMED JOINT SEAL 1-1/2"	FOOT	36	36
52000030	PREFORMED JOINT SEAL 2-1/2"	FOOT	36	36
67100100	MOBILIZATION	L SUM	1	1
70100325	TRAFFIC CONTROL AND PROTECTION, STANDARD 701423	EACH	1	1
70107025	CHANGEABLE MESSAGE SIGNS	CAL DAY	40	40
70400100	TEMPORARY CONCRETE BARRIER	FOOT	625	625
70400200	RELOCATE TEMPORARY CONCRETE BARRIER	FOOT	625	625
70600251	IMPACT ATTENUATORS, TEMPORARY (NON-REDIRECTIVE, NARROW), TEST LEVEL 3	EACH	2	2
70600352	IMPACT ATTENUATORS, RELOCATE (NON-REDIRECTIVE, NARROW), TEST LEVEL 3	EACH	2	2
* 78001120	PAINT PAVEMENT MARKING - LINE 5"	FOOT	2000	2000
X0327979	PAVEMENT MARKING REMOVAL - GRINDING	SQ FT	850	850
X7200201	WIDTH RESTRICTION SIGNING	L SUM	1	1
Z0001800	APPROACH SLAB REPAIR (PARTIAL DEPTH)	SQ YD	2	2

CODE NO.	ITEM	UNIT	TOTAL QUANTITY	BRIDGE/URBAN
				0047 SANGAMON
Z0016002	DECK SLAB REPAIR (FULL DEPTH, TYPE II)	SQ YD	5	5
Z0016200	DECK SLAB REPAIR (PARTIAL)	SQ YD	130	130
Z0032500	JOINT SEALING (PATCHES)	FOOT	1200	1200
Z0041895	POLYMER CONCRETE	CU FT	14	14

* SPECIALTY ITEM

MODEL: Default
FILE NAME: C:\OPERATIONS\Bridges\Bridges\Bridges\CAD\72L71 - 0840042.pctrackupbarsheet.dgn

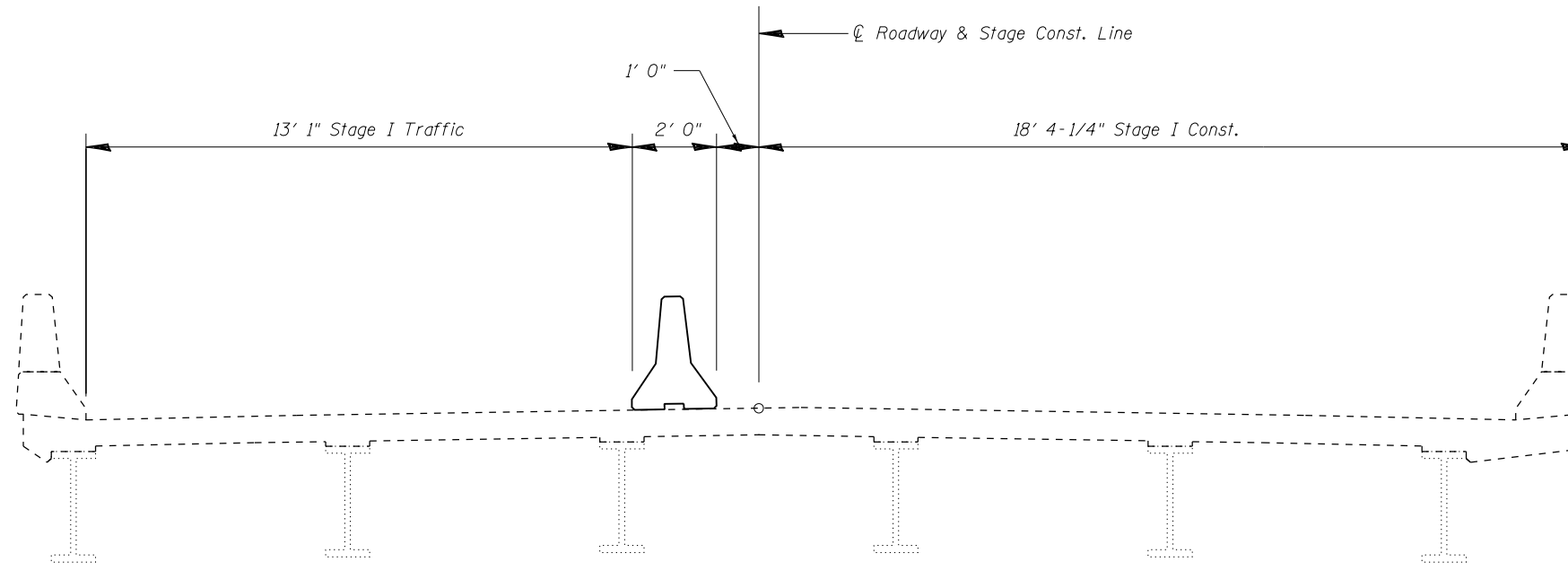
USER NAME = dudleybm	DESIGNED -	REVISED -
PLOT SCALE = 100.0000' / in.	DRAWN -	REVISED -
PLOT DATE = 1/29/2020	CHECKED -	REVISED -
	DATE -	REVISED -

**STATE OF ILLINOIS
DEPARTMENT OF TRANSPORTATION**

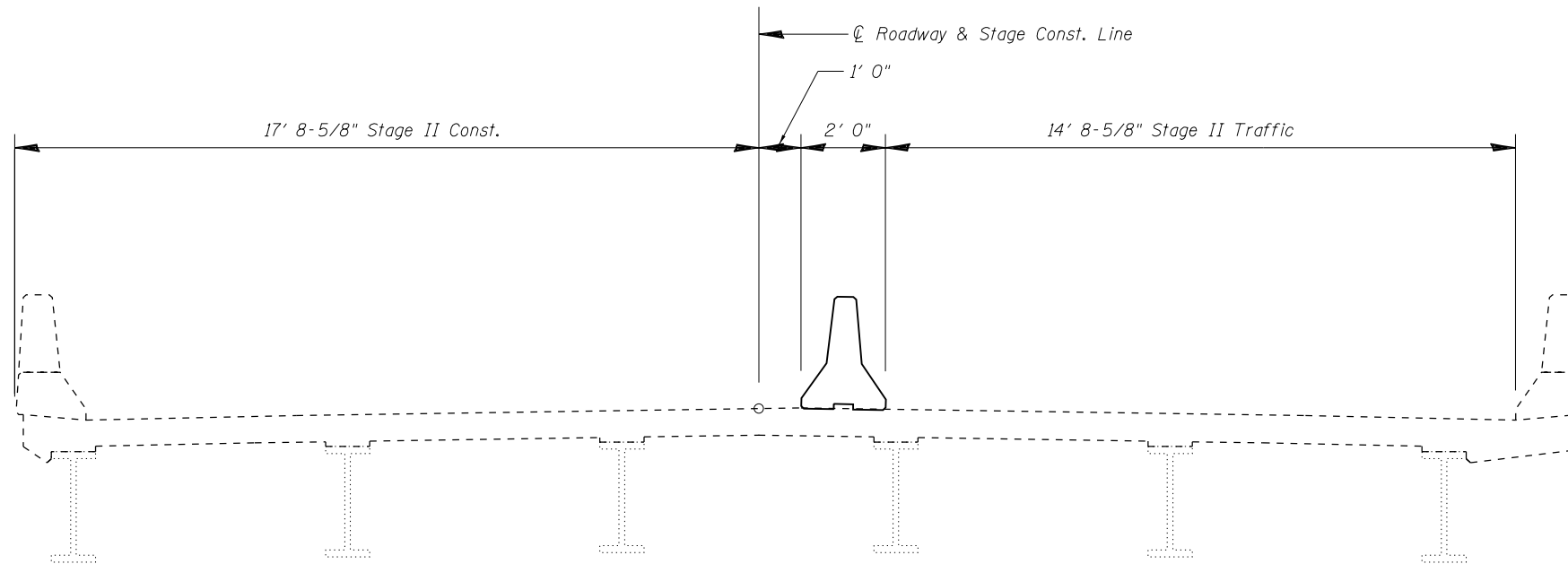
SUMMARY OF QUANTITIES

SCALE: SHEET OF SHEETS STA. TO STA.

F.A.P. RTE.	SECTION	COUNTY	TOTAL SHEETS	SHEET NO.
75	(6) BDR, BJR	SANGAMON	9	3
			CONTRACT NO. 72L71	
			ILLINOIS FED. AID PROJECT	



STAGE I CROSS SECTION
(Looking West)



STAGE II CROSS SECTION
(Looking West)

MODEL: Default
FILE: \\MAILS-CU\OPERATIONS\bridge\bridgeplans_CAD\72L71 - 08-0042_patch\plan\sheet.dgn

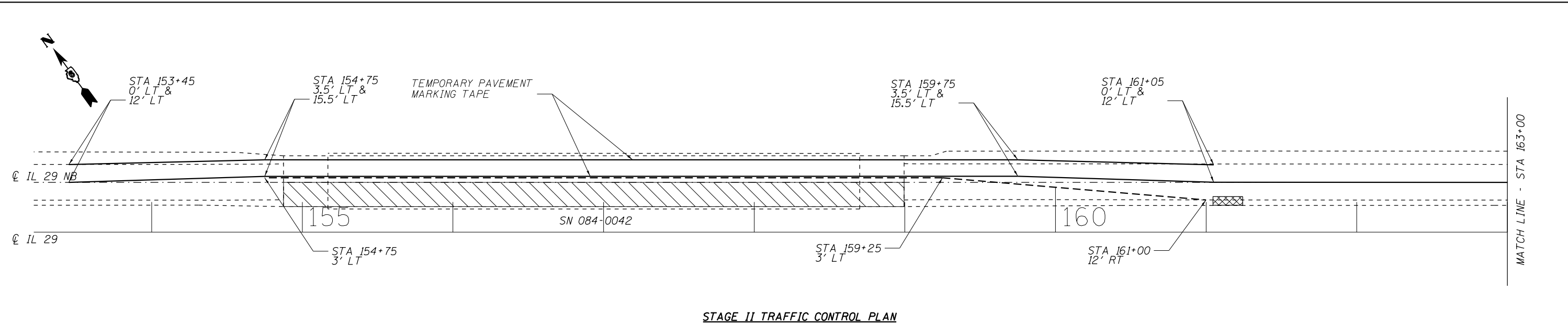
USER NAME = dudleybm	DESIGNED -	REVISED -
	DRAWN -	REVISED -
PLOT SCALE = 100.0000' / in.	CHECKED -	REVISED -
PLOT DATE = 1/29/2020	DATE -	REVISED -

**STATE OF ILLINOIS
DEPARTMENT OF TRANSPORTATION**

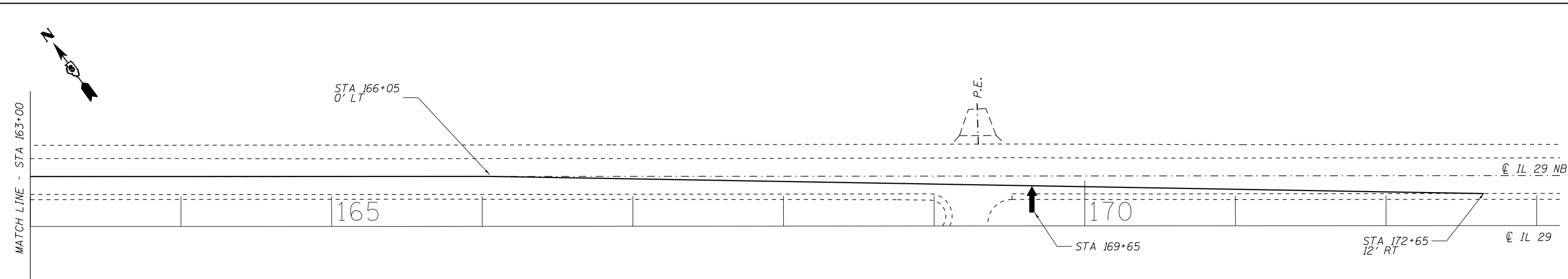
TRAFFIC STAGING PLAN

SCALE: SHEET OF SHEETS STA. TO STA.

F.A.P. RTE.	SECTION	COUNTY	TOTAL SHEETS	SHEET NO.
75	(6) BDR, BJR	SANGAMON	9	4
CONTRACT NO. 72L71				
ILLINOIS FED. AID PROJECT				


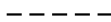
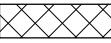



STAGE II TRAFFIC CONTROL PLAN



STAGE II TRAFFIC CONTROL PLAN

SYMBOLS

-  WORK AREA
-  TEMPORARY CONCRETE BARRIER
-  IMPACT ATTENUATOR
-  ARROW BOARD

TRAFFIC CONTROL NOTES:

1. TRAFFIC CONTROL DEVICES NOT SHOWN IN THIS DETAIL SHALL BE PER STANDARD 701423. DEVICES AND TEMPORARY PAVEMENT MARKINGS SHOWN IN THIS DETAIL SHALL BE INCLUDED IN THE COST OF TRAFFIC CONTROL AND PROTECTION, STANDARD 701423. IMPACT ATTENUATORS, AND TEMPORARY CONCRETE BARRIER SHALL BE PAID SEPARATELY.
2. LEFT AND RIGHT OFFSETS SHOWN SHALL REFER TO DISTANCES FROM THE CENTERLINE OF THE NORTHBOUND TRAFFIC LANES, NOT THE IL 29 CENTERLINE.
3. TEMPORARY CONCRETE BARRIER OFFSETS GIVEN IN THIS DETAIL REFER TO THE EDGE OF THE BARRIER NEAREST TO LIVE TRAFFIC. BARRIER WALL TAPERS SHALL BE 12:1 UNLESS OTHERWISE NOTED.

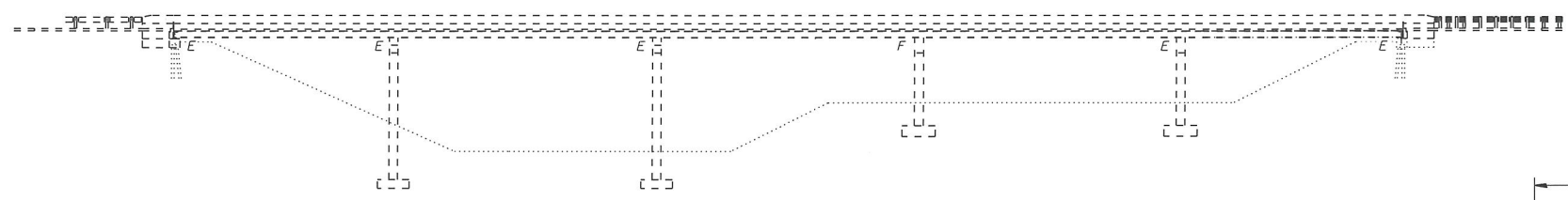
MODEL: Default
FILE: \\nas01.csc.state.il.us\projects\BDR\BDR\plans_CAD\72L71 - 0840042_trafficplan\sheet.dgn

USER NAME = dudleybm	DESIGNED -	REVISED -
PLOT SCALE = 100.0000' / in.	DRAWN -	REVISED -
PLOT DATE = 1/29/2020	CHECKED -	REVISED -
	DATE -	REVISED -

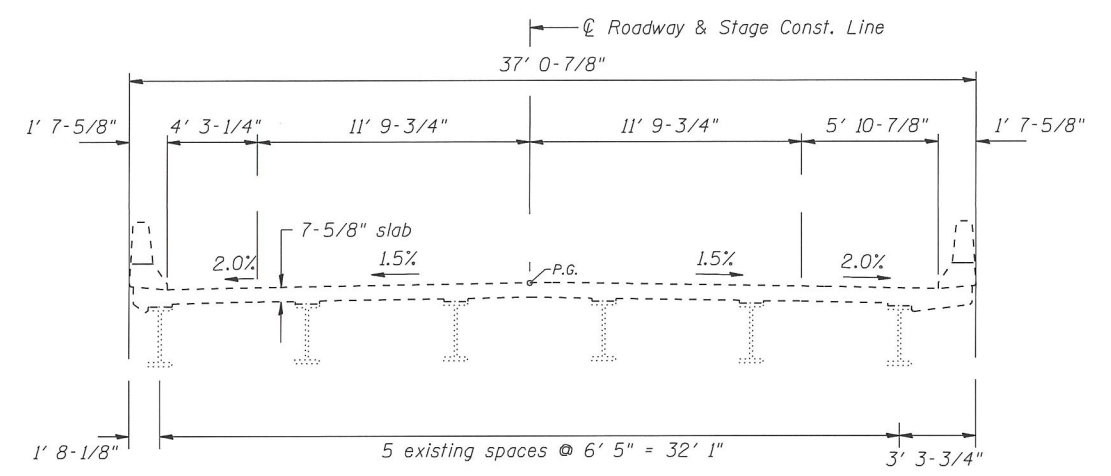
**STATE OF ILLINOIS
DEPARTMENT OF TRANSPORTATION**

STAGE II TRAFFIC CONTROL PLAN			
SCALE:	SHEET	OF SHEETS	STA. TO STA.

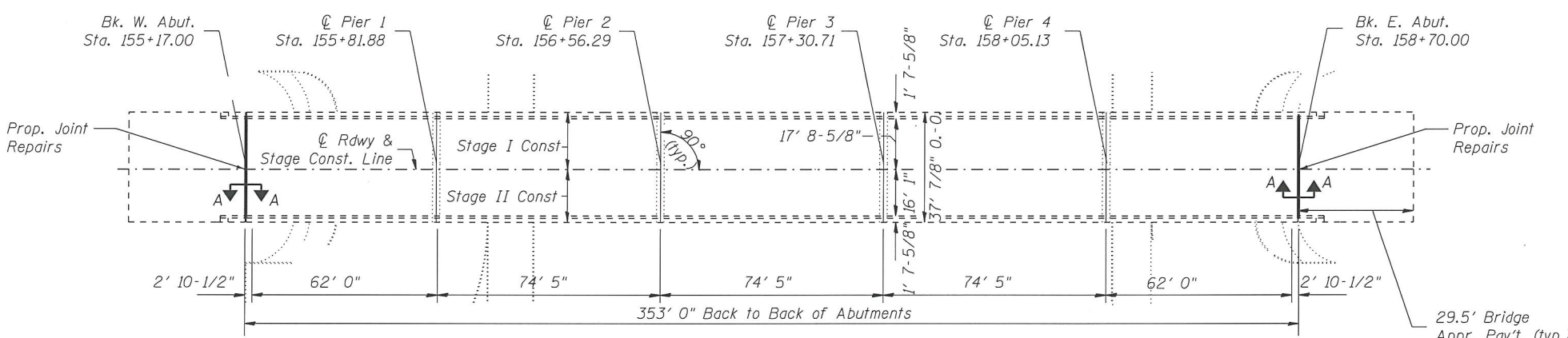
F.A.P. RTE.	SECTION	COUNTY	TOTAL SHEETS	SHEET NO.
75	(6) BDR, BJR	SANGAMON	9	6
CONTRACT NO. 72L71				
ILLINOIS FED. AID PROJECT				



ELEVATION



CROSS SECTION
(Looking West)



PLAN



David Carl Puzey 3/23/2020
Expires 1/30/2020

TOTAL BILL OF MATERIAL (084-0042)

ITEM	UNIT	QUANTITY
Deck Slab Repair (Partial)	Sq. Yd.	130
Approach Slab Repair (Partial Depth)	Sq. Yd.	2
Deck Slab Repair (Full Depth, Type II) *	Sq. Yd.	5*
Joint Sealing (Patches)	Foot	1200
Concrete Removal	Cu. Yd.	0.1
Polymer Concrete	Cu. Ft.	14
Preformed Joint Seal 1-1/2"	Foot	36
Preformed Joint Seal 2-1/2"	Foot	36
* No FD patches anticipated, nominal quantity included		

STRUCTURE GENERAL NOTES:

JOINT SEALING (PATCHES) SHALL BE PLACED AS DESCRIBED IN THE SPECIAL PROVISIONS.

PRIOR TO POURING THE NEW CONCRETE PATCHES, ALL HEAVY OR LOOSE MILL SCALE AND OTHER LOOSE OR POTENTIALLY DETRIMENTAL FOREIGN MATERIAL SHALL BE REMOVED FROM THE SURFACES IN CONTACT WITH CONCRETE. TIGHTLY ADHERED PAINT MAY REMAIN UNLESS OTHERWISE NOTED. REMOVAL SHALL BE ACCOMPLISHED BY METHODS THAT WILL NOT DAMAGE THE STEEL AND THE COST WILL BE INCLUDED IN CONCRETE REMOVAL.

PLAN DIMENSIONS AND DETAILS RELATIVE TO EXISTING PLANS ARE SUBJECT TO NOMINAL CONSTRUCTION VARIATIONS. THE CONTRACTOR SHALL FIELD VERIFY EXISTING DIMENSIONS AND DETAILS AFFECTING NEW CONSTRUCTION AND MAKE NECESSARY APPROVED ADJUSTMENTS PRIOR TO CONSTRUCTION OR ORDERING OF MATERIALS. SUCH VARIATIONS SHALL NOT BE CAUSE FOR ADDITIONAL COMPENSATION FOR A CHANGE IN THE SCOPE OF WORK, HOWEVER, THE CONTRACTOR WILL BE PAID FOR THE QUANTITY ACTUALLY FURNISHED AT THE UNIT PRICE BID FOR THE WORK.

EXISTING REINFORCEMENT BARS EXTENDING INTO THE REMOVAL AREA SHALL BE CLEANED, STRAIGHTENED, AND INCORPORATED INTO THE NEW CONSTRUCTION. ANY REINFORCEMENT BARS THAT ARE DAMAGED DURING CONCRETE REMOVAL SHALL BE REPLACED WITH AN APPROVED BAR SPLICER OR ANCHORAGE SYSTEM. COST INCLUDED WITH CONCRETE REMOVAL.

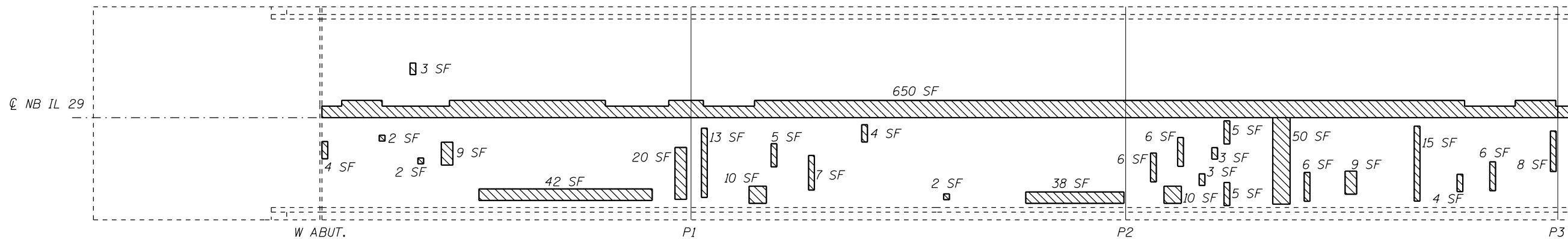
MODEL: Default
FILE NAME: C:\OPERATIONS\Bridges\Bridges\084-0042 - patching plans sheet.dgn

USER NAME = dudleybm	DESIGNED -	REVISED -
PLOT SCALE = 100.0000' / in.	DRAWN -	REVISED -
PLOT DATE = 1/29/2020	CHECKED -	REVISED -
	DATE -	REVISED -

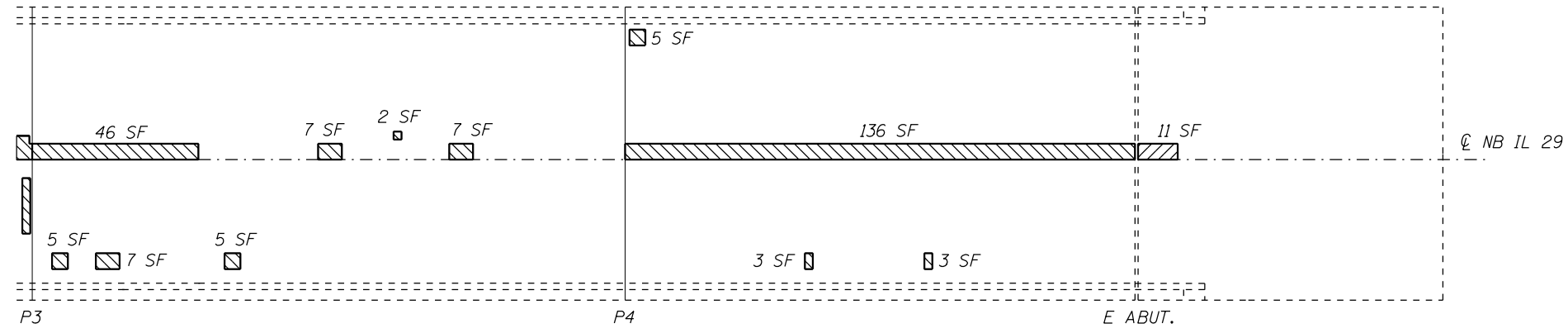
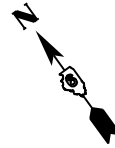
**STATE OF ILLINOIS
DEPARTMENT OF TRANSPORTATION**

PLAN & ELEVATION	
SN 084-0042	
SCALE:	SHEET 1 OF 3 SHEETS STA. TO STA.

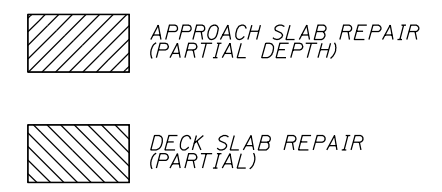
F.A.P. RTE.	SECTION	COUNTY	TOTAL SHEETS	SHEET NO.
75	(6) BDR, BJR	SANGAMON	9	7
CONTRACT NO. 72L71			ILLINOIS FED. AID PROJECT	



PLAN



PLAN



PATCHING BILL OF MATERIAL

ITEM	UNIT	QUANTITY
Deck Slab Repair (Partial)	Sq. Yd.	130
Approach Slab Repair (Partial Depth)	Sq. Yd.	2
Deck Slab Repair (Full Depth, Type II) *	Sq. Yd.	5*
Joint Sealing (Patches)	Foot	1200
* No FD patches anticipated, nominal quantity included		

NOTE:
 AREAS OF DECK REPAIRS SHOWN ARE ESTIMATED. THE ENGINEER SHALL SHOW ACTUAL LOCATIONS OF DECK REPAIRS ON AS-BUILT PLANS.

MODEL: Default
 FILE: \\nas01.csc.coppep.stateil.us\projects\BDR\BDR\plans_CAD\72L71 - 084-0042_patchplan\sheet.dgn

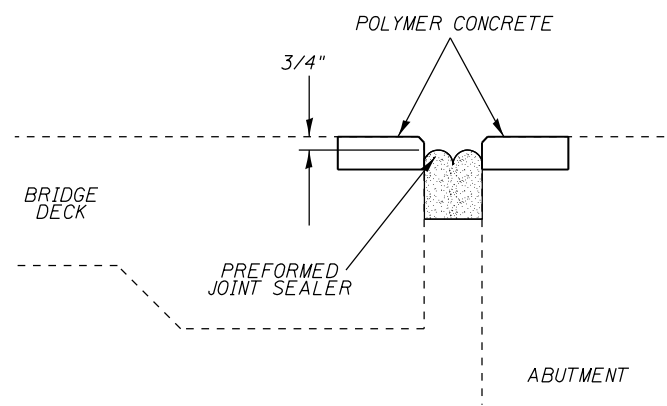
USER NAME = dudleybm	DESIGNED -	REVISED -
PLOT SCALE = 100.0000' / in.	DRAWN -	REVISED -
PLOT DATE = 1/29/2020	CHECKED -	REVISED -
	DATE -	REVISED -

**STATE OF ILLINOIS
 DEPARTMENT OF TRANSPORTATION**

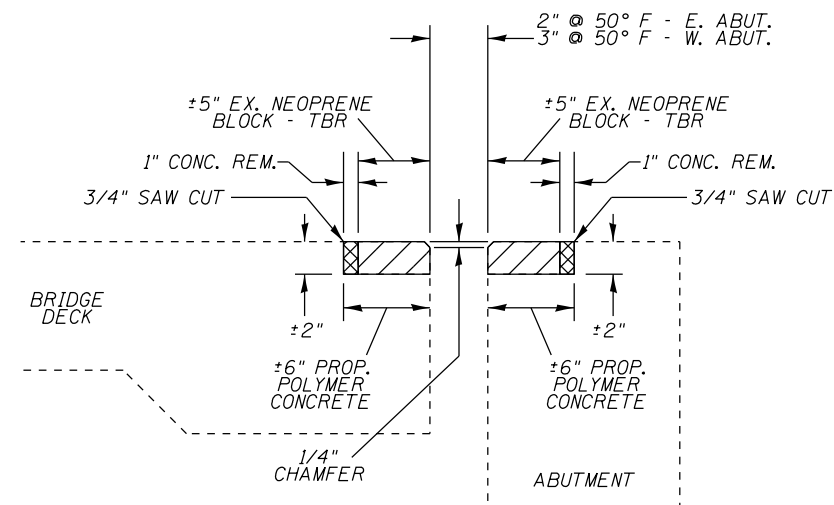
**PATCHING PLAN
 SN 084-0042**

SCALE: SHEET 2 OF 3 SHEETS STA. TO STA.

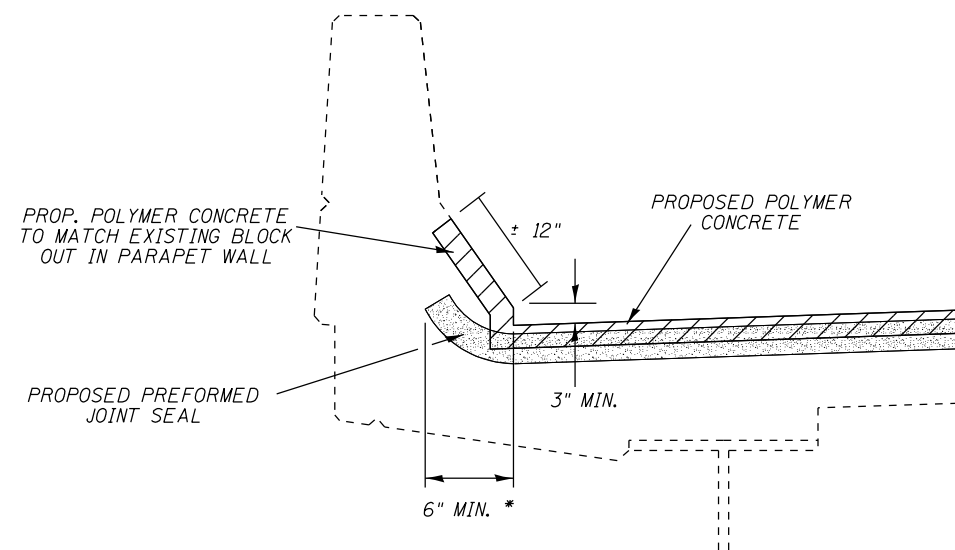
F.A.P. RTE.	SECTION	COUNTY	TOTAL SHEETS	SHEET NO.
75	(6) BDR, BJR	SANGAMON	9	8
ILLINOIS FED. AID PROJECT			CONTRACT NO. 72L71	



SECTION A-A:
PREFORMED JOINT SEALER DETAIL



SECTION A-A
PROPOSED POLYMER CONCRETE
CROSS SECTION



TYPICAL PARAPET CROSS SECTION:
JOINT SEALER END TREATMENT

NOTES:

- THE PREFORMED PRE-COMPRESSED, SILICONE COATED, SELF-EXPANDING SEALANT SYSTEM DETAILED IN THE SPECIAL PROVISIONS SHALL BE USED.
- 1/4" CHAMFER MAY BE ACHIEVED BY GRINDING AFTER POLYMER CONCRETE HAS CURED.
- REMOVAL OF EXISTING NEOPRENE EXPANSION JOINTS SHALL BE INCLUDED IN THE COST OF CONCRETE REMOVAL.
- ANY STEEL ANCHORING STUDS ENCOUNTERED IN THE NEOPRENE JOINT REMOVAL AREA SHALL BE CUT OFF FLUSH WITH THE EXISTING CONCRETE, COST TO BE INCLUDED IN THE BID PRICE FOR CONCRETE REMOVAL.
- JOINT WIDTHS SPECIFIED IN PLANS ARE AT 50° F. THE CONTRACTOR SHALL INSTALL BACKER ROD HAVING A DIAMETER 25% GREATER THAN THE JOINT OPENING AT THE TIME OF INSTALLATION.

BILL OF MATERIAL (2 JOINTS)

ITEM	UNIT	QUANTITY
Concrete Removal	Cu. Yd.	0.1
Polymer Concrete	Cu. Ft.	14
Preformed Joint Seal 1-1/2"	Foot	36
Preformed Joint Seal 2-1/2"	Foot	36

MODEL Default
FILE Name: C:\OPERATIONS\bridge\bridgeplans_CAD\72L71 - 0840042_patchingplan sheet.dgn

USER NAME = dudleybm	DESIGNED -	REVISED -
PLOT SCALE = 100.0000' / in.	DRAWN -	REVISED -
PLOT DATE = 1/29/2020	CHECKED -	REVISED -
	DATE -	REVISED -

STATE OF ILLINOIS
DEPARTMENT OF TRANSPORTATION

JOINT REPAIR DETAILS
SN 084-0042

SCALE: SHEET 3 OF 3 SHEETS STA. TO STA.

F.A.P. RTE.	SECTION	COUNTY	TOTAL SHEETS	SHEET NO.
75	(6) BDR, BJR	SANGAMON	9	9
CONTRACT NO. 72L71				
ILLINOIS FED. AID PROJECT				