

071

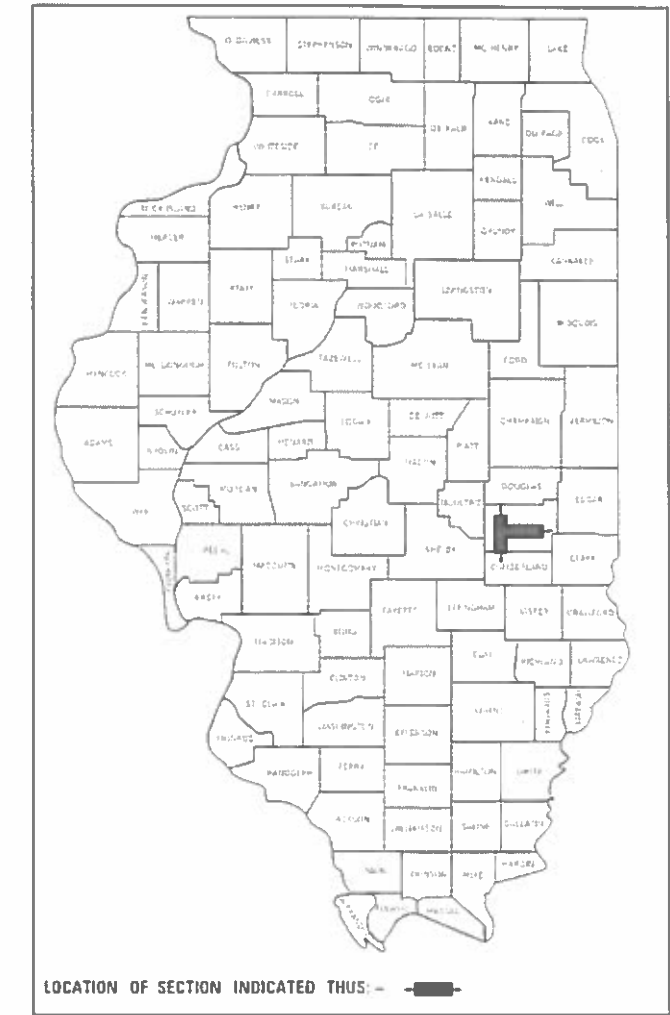
04-24-2020 LETTING ITEM 071

STATE OF ILLINOIS
DEPARTMENT OF TRANSPORTATION

FAI ROUTE	SECTION	COUNTY	TOTAL SHEETS	SHEET NO.
D7 PATCHING 2020-6		COLES	4	1
ILLINOIS		CONTRACT NO. 74934		

FAI 57 & FAU 7619

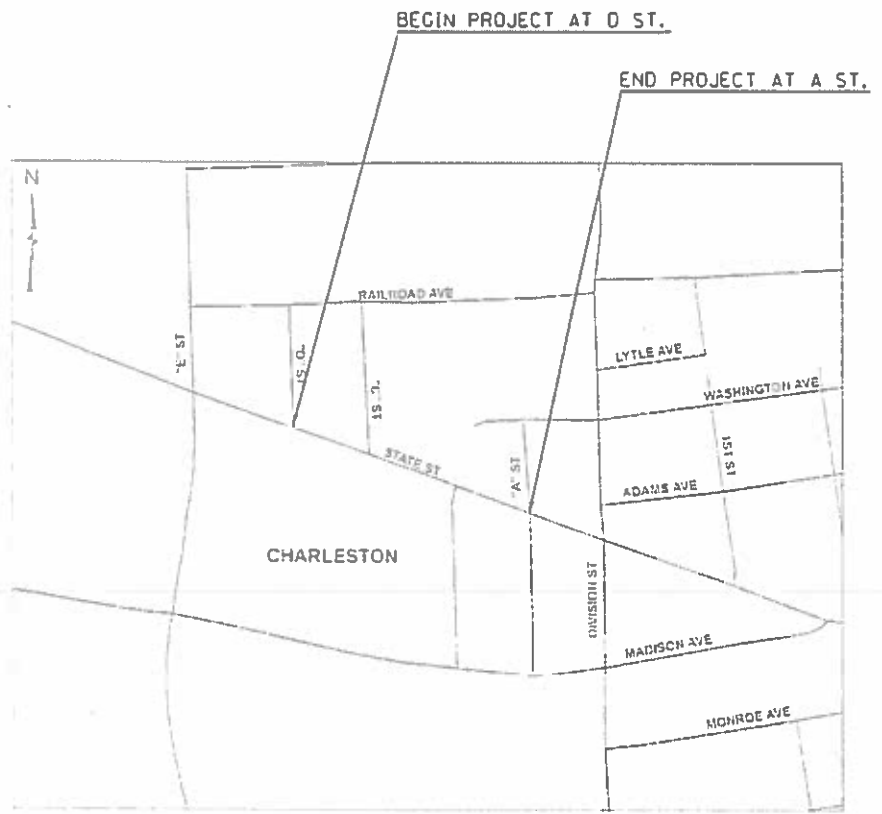
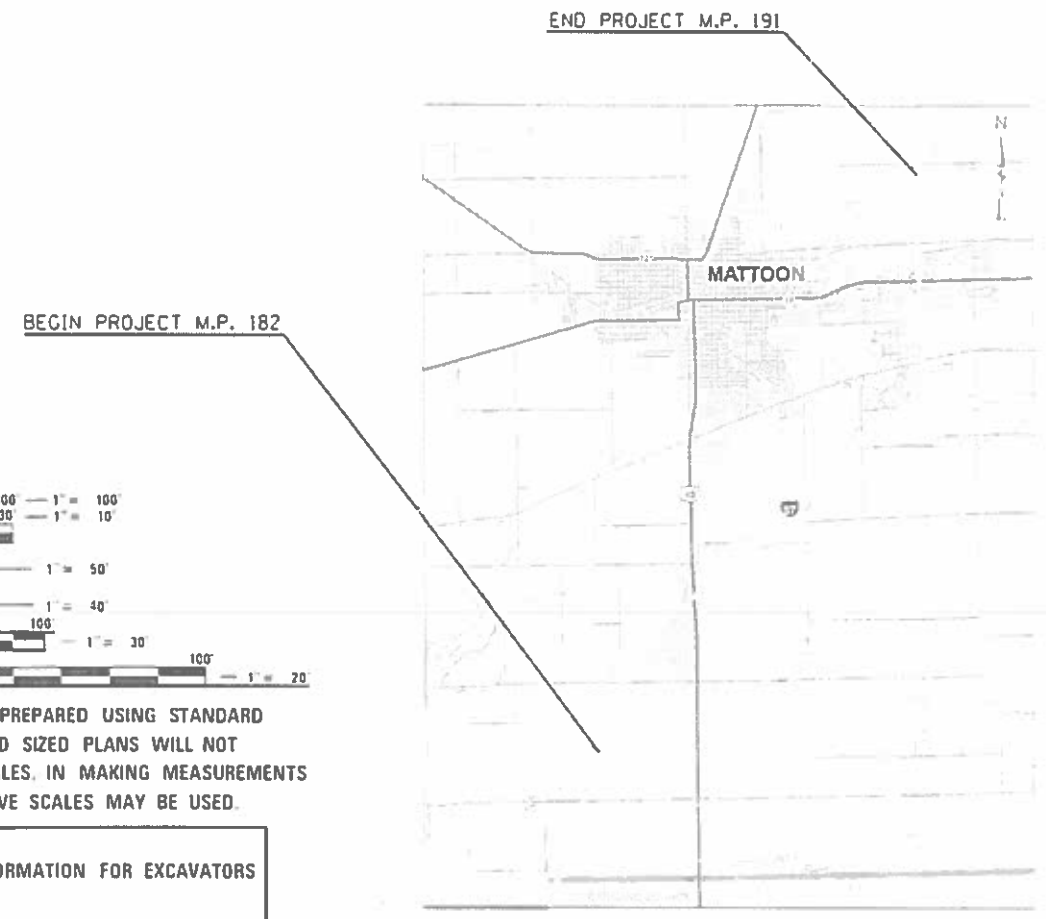
D-97-010-20



PROPOSED HIGHWAY PLANS

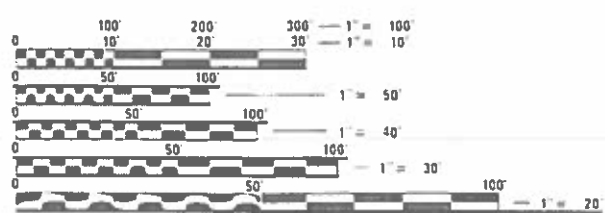
FAI ROUTE 57 & FAU ROUTE 7619
(I-57, OLD IL 316)
SECTION D7 PATCHING 2020-6
PATCHING
COLES COUNTY

C-97-010-20



OLD ILL 316

I-57



FULL SIZE PLANS HAVE BEEN PREPARED USING STANDARD ENGINEERING SCALES. REDUCED SIZED PLANS WILL NOT CONFORM TO STANDARD SCALES. IN MAKING MEASUREMENTS ON REDUCED PLANS, THE ABOVE SCALES MAY BE USED.

J.U.L.I.E.
JOINT UTILITY LOCATION INFORMATION FOR EXCAVATORS
1-800-892-0123
OR 811

PROJECT ENGINEER BRIAN LEWIS
PROJECT MANAGER BRANDON BAILEY
PHONE: (217) 342-8360
CONTRACT NO. 74934

STATE OF ILLINOIS
DEPARTMENT OF TRANSPORTATION

SUBMITTED JANUARY 30 20 20
Jeff P. Myers REGIONAL ENGINEER
Mark [Signature] ENGINEER OF DESIGN AND ENVIRONMENT
Mark [Signature] DIRECTOR OF HIGHWAYS PROJECT IMPLEMENTATION

PRINTED BY THE AUTHORITY
OF THE STATE OF ILLINOIS

INDEX OF SHEETS

SHEET NO.	ITEM
1	COVER SHEET
2	GENERAL NOTES, INDEX OF SHEETS & PATCHING SCHEDULE
3	SUMMARY OF QUANTITIES
4	SCHEDULE OF QUANTITIES

THE FOLLOWING STANDARDS ARE A PART OF THESE PLANS AND ARE INCLUDED AFTER SHEET NO. 4:

STD. NO.	DESCRIPTION
001001-02	AREAS OF REINFORCEMENT BARS
420001-09	PAVEMENT JOINTS
421001-03	BAR REINFORCEMENT FOR CRC PAVEMENT
442001-04	CLASS A PATCHES
442201-03	CLASS C AND D PATCHES
701101-05	OFF-RD OPERATIONS, MULTILANE, 15' TO 24" FROM PAVEMENT EDGE
701106-02	OFF-RD OPERATIONS, MULTILANE, MORE THAN 15' AWAY
701400-09	APPROACH TO LANE CLOSURE, FREEWAY/EXPRESSWAY
701401-12	LANE CLOSURE, FREEWAY/EXPRESSWAY
701411-09	LANE CLOSURE, MULTILANE, AT ENTRANCE OR EXIT RAMP, FOR SPEEDS • 45 MPH
701501-06	URBAN LANE CLOSURE, 2L, 2W, UNDIVIDED
701901-08	TRAFFIC CONTROL DEVICES

GENERAL NOTES

THIS PROJECT IS LOCATED ON I-57 AND OLD ILL 316 IN COLES COUNTY. THE PROJECT STARTS AT M.P. 182 AND EXTENDS TO M.P. 191 ON I-57. THE OLD ILL 316 SECTION BEGINS AT D STREET AND EXTENDS TO A STREET IN CHARLESTON. THE WORK INCLUDED IN SECTION D7 PATCHING 2020-6 CONSISTS OF CLASS A & C PAVEMENT PATCHING, TRAFFIC CONTROL, AND ANY OTHER WORK NECESSARY TO COMPLETE THE SECTION.

THE ESTIMATED NUMBER OF PATCHES IS AS FOLLOWS:

	TYPE II	TYPE III	TYPE IV
<u>I-57</u>			
NORTHBOUND DRIVING	11	0	1
NORTHBOUND PASSING	2	0	0
SOUTHBOUND DRIVING	15	3	0
SOUTHBOUND PASSING	7	1	0
<u>OLD ILL 316</u>			
EASTBOUND	9	1	2
WESTBOUND	10	0	3
VIADUCT	0	0	1

THE ACTUAL LOCATIONS OF PAVEMENT PATCHING AND FINAL QUANTITIES SHALL BE DETERMINED BY THE ENGINEER IN THE FIELD.

CALCIUM CHLORIDE ACCELERATOR WILL NOT BE ALLOWED IN THE CONSTRUCTION OF CLASS A PATCHES, TYPE II, III, & IV.

SHALLOW SANITARY SEWER EXISTS WITHIN THE LIMITS OF THE PATCHES UNDER THE RAILROAD VIADUCT ON IL 316. THE CONTRACTOR SHALL NOTIFY THE CITY OF CHARLESTON 48 HOURS BEFORE BEGINNING PATCHING OPERATIONS IN THIS AREA. THE CONTRACTOR SHALL REMOVE THE EXISTING PAVEMENT WITH EXTREME CAUTION TO PREVENT DAMAGE TO THE SEWER.

* F.A.I. 57 & F.A.U. 7619

MODEL: Default
FILE: Model: 20200101.dwg
PROJECT: 74934\CAAD\Drawings\DOT - Offices\Drawings\74934-57-4-11-2020.dwg

USER NAME = steffenmk	DESIGNED -	REVISED -	STATE OF ILLINOIS DEPARTMENT OF TRANSPORTATION	GENERAL NOTES, INDEX OF SHEETS & PATCHING SCHEDULE	F.A.* RTE.	SECTION	COUNTY	TOTAL SHEETS	SHEET NO.
PLOT SCALE = 100.0000' / in.	DRAWN -	REVISED -			*	D7 PATCHING 2020-6	COLES	4	2
PLOT DATE = 1/30/2020	CHECKED -	REVISED -			CONTRACT NO. 74934				
	DATE -	REVISED -			SCALE:	SHEET	OF	SHEETS	STA.
					ILLINOIS FED. AID PROJECT				

SUMMARY OF QUANTITIES			TOTAL QUANTITIES	CONSTRUCTION TYPE CODE		
CODE NO	ITEM	UNIT		0006 100% STATE		
44200610	CLASS A PATCHES, TYPE II, 13 INCH	SO YD	318	318		
44200612	CLASS A PATCHES, TYPE III, 13 INCH	SO YD	64	64		
44200614	CLASS A PATCHES, TYPE IV, 13 INCH	SO YD	33	33		
44201415	CLASS C PATCHES, TYPE II, 15 INCH	SO YD	157	157		
44201419	CLASS C PATCHES, TYPE III, 15 INCH	SO YD	20	20		
44201421	CLASS C PATCHES, TYPE IV, 15 INCH	SO YD	403	403		
44213000	PATCHING REINFORCEMENT	SO YD	415	415		
44213200	SAW CUTS	FOOT	2534	2534		
44213204	TIE BARS 3/4"	EACH	12	12		
67100100	MOBILIZATION	L SUM	1	1		
70100420	TRAFFIC CONTROL AND PROTECTION, STANDARD 701411	EACH	9	9		
70100800	TRAFFIC CONTROL AND PROTECTION, STANDARD 701401	L SUM	1	1		
70102620	TRAFFIC CONTROL AND PROTECTION, STANDARD 701501	L SUM	1	1		

SUMMARY OF QUANTITIES			TOTAL QUANTITIES	CONSTRUCTION TYPE CODE		
CODE NO	ITEM	UNIT		0006 100% STATE		
70107025	CHANGEABLE MESSAGE SIGN	CAL DA	56	56		
Z0048665	RAILROAD PROTECTIVE LIABILITY INSURANCE	L SUM	1	1		

MODEL: Default
 FILE: Model: P:\pub\baronm.dwg
 I:\Illinois\pwr\DOT\Documents\DOT_Offices\DOT\74934\CAD\Drawings\74934-4-18-2020.dwg

* F.A.I. 57 & F.A.U. 7619

USER NAME = steffemk	DESIGNED -	REVISED -
	DRAWN -	REVISED -
PLOT SCALE = 100.0000' / in.	CHECKED -	REVISED -
PLOT DATE = 1/30/2020	DATE -	REVISED -

**STATE OF ILLINOIS
DEPARTMENT OF TRANSPORTATION**

SUMMARY OF QUANTITIES

SCALE: SHEET OF SHEETS STA. TO STA.

F.A.* RTE.	SECTION	COUNTY	TOTAL SHEETS	SHEET NO.
*	D7 PATCHING 2020-6	COLES	4	3
			CONTRACT NO. 74934	
		ILLINOIS	FED. AID PROJECT	

MODEL: Default
 FILE: \\bls01\pub\baronm.d\illinois\pwr\DOT\Documents\DOT_Offices\Illinet\7\Projects\7493\CAAD\Bdata\CAD\sheet\074934\shc-schedule.dgn

PATCHING SCHEDULE COLES COUNTY (I-57)									
MILEPOST	LENGTH FOOT	WIDTH FOOT	CLASS A PATCHES, TYPE II, 13"		CLASS A PATCHES, TYPE III, 13"		CLASS A PATCHES, TYPE IV, 13"		TIE BARS 3/4"
			SO YD	SO YD	SO YD	SO YD			
I-57 (M. P. 182 TO M. P. 191)									
NORTHBOUND									
NBDL	182.80	25	12			33.3	33.3	99.5	12
NBDL	182.75	6	12	8			8	61.5	
NBDL	184.44	8	12	10.7			10.7	65.5	
NBDL	184.61	6	12	8			8	61.5	
NBPL	184.61	6	12	8			8	55.5	
NBDL	185.74	8	12	10.7			10.7	65.5	
NBDL	185.82	8	12	10.7			10.7	65.5	
NBDL	186.62	8	12	10.7			10.7	65.5	
NBDL	186.63	8	12	10.7			10.7	65.5	
NBDL	186.68	6	12	8			8	61.5	
NBDL	187.58	6	12	8			8	61.5	
NBPL	187.58	6	12	8			8	55.5	
NBDL	187.98	8	12	10.7			10.7	65.5	
NBDL	189.85	8	12	10.7			10.7	65.5	
SOUTHBOUND									
SBDL	190.50	12	12		16.0		16.0	73.5	
SBPL	190.50	12	12		16.0		16.0	61.5	
SBDL	190.20	6	12	8.0			8.0	61.5	
SBDL	189.90	6	12	8.0			8.0	55.5	
SBPL	189.90	8	12	10.7			10.7	65.5	
SBDL	189.80	12	12		16.0		16.0	73.5	
SBPL	189.80	6	12	8.0			8.0	55.5	
SBDL	189.70	8	12	10.7			10.7	65.5	
SBPL	189.70	8	12	10.7			10.7	57.5	
SBDL	189.40	6	12	8.0			8.0	55.5	
SBPL	189.40	8	12	10.7			10.7	65.5	
SBDL	189.30	6	12	8.0			8.0	61.5	
SBDL	188.90	10	12	13.3			13.3	69.5	
SBDL	186.80	6	12	8.0			8.0	61.5	
SBPL	186.80	6	12	8.0			8.0	55.5	
SBDL	186.75	6	12	8.0			8.0	61.5	
SBDL	186.10	12	12		16.0		16.0	73.5	
SBDL	185.50	6	12	8.0			8.0	61.5	
SBDL	185.40	6	12	8.0			8.0	61.5	
SBDL	185.30	6	12	8.0			8.0	61.5	
SBPL	185.30	6	12	8.0			8.0	55.5	
SBDL	184.90	6	12	8.0			8.0	61.5	

PATCHING SCHEDULE COLES COUNTY (I-57)									
MILEPOST	LENGTH FOOT	WIDTH FOOT	CLASS A PATCHES, TYPE II, 13"		CLASS A PATCHES, TYPE III, 13"		CLASS A PATCHES, TYPE IV, 13"		TIE BARS 3/4"
			SO YD	SO YD	SO YD	SO YD			
SBDL	184.80	8	12	10.7			10.7	65.5	
SBDL	184.70	6	12	8.0			8.0	61.5	
SBPL	184.70	6	12	8.0			8.0	55.5	
SBDL	184.50	6	12	8.0			8.0	61.5	
TOTAL			317.7	64.0	33.3	415.0	2534.0	12.0	

PATCHING SCHEDULE COLES COUNTY (I-57 & OLD ILL 316)											
MILEPOST	LENGTH FOOT	WIDTH FOOT	CLASS A PATCHES, TYPE II, 13"		CLASS A PATCHES, TYPE III, 13"		CLASS A PATCHES, TYPE IV, 13"		TIE BARS 3/4"		
			SO YD	SO YD	SO YD	SO YD					
I-57 (M. P. 182 TO M. P. 191)											
NORTHBOUND DRIVING											
	106.9	-	33.3	-	-	-	140.2	804.0	12.0		
NORTHBOUND PASSING											
	16.0	-	-	-	-	-	16.0	111.0	-		
SOUTHBOUND DRIVING											
	130.7	48.0	-	-	-	-	178.7	1147.0	-		
SOUTHBOUND PASSING											
	64.1	16.0	-	-	-	-	80.1	472.0	-		
TOTAL			317.7	64.0	33.3	0.0	0.0	0.0	415.0	2534.0	12.0
OLD ILL 316 (D ST. TO A ST.)											
EASTBOUND											
	-	-	-	72.0	20.0	200.0	-	-	-		
WESTBOUND											
	-	-	-	84.6	-	106.6	-	-	-		
UNDER VIADUCT - EB											
	-	-	-	-	-	48.0	-	-	-		
UNDER VIADUCT - WB											
	-	-	-	-	-	48.0	-	-	-		
TOTAL			0.0	0.0	0.0	156.6	20.0	402.6	0.0	0.0	0.0
PROJECT TOTALS			317.7	64.0	33.3	156.6	20.0	402.6	415.0	2534.0	12.0
ROUND TO			318	64	33	157	20	403	415	2534	12

* F.A.I. 57 & F.A.U. 7619

USER NAME = steffenmk	DESIGNED -	REVISED -
	DRAWN -	REVISED -
PLOT SCALE = 100.0000 ' / in.	CHECKED -	REVISED -
PLOT DATE = 1/30/2020	DATE -	REVISED -

**STATE OF ILLINOIS
DEPARTMENT OF TRANSPORTATION**

SCHEDULE OF QUANTITIES

SCALE: SHEET OF SHEETS STA. TO STA.

F.A. RTE.	SECTION	COUNTY	TOTAL SHEETS	SHEET NO.
*	D7 PATCHING 2020-6	COLES	4	4
CONTRACT NO. 74934				
ILLINOIS		FED. AID PROJECT		