

073

STATE OF ILLINOIS
DEPARTMENT OF TRANSPORTATION

FAP RTE	SECTION	COUNTY	TOTAL SHEETS	SHEET NO
327	(51-24) & (51-24-2) PVMT PRSV	LAWRENCE	7	1
		ILLINOIS	CONTRACT NO 74952	

FOR INDEX OF SHEETS, SEE SHEET NO. 2

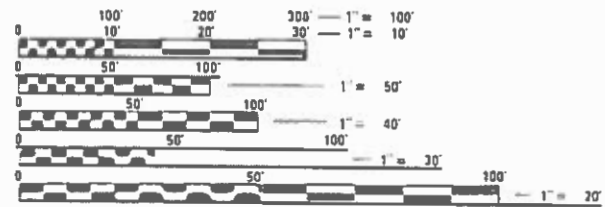
PROPOSED HIGHWAY PLANS

FAP ROUTE 327 (US 50)
SECTION (51-24) & (51-24-2) PVMT PRSV
PROJECT NPHH-N7CA (309)
CAPE SEAL
LAWRENCE COUNTY

C-97-029-20

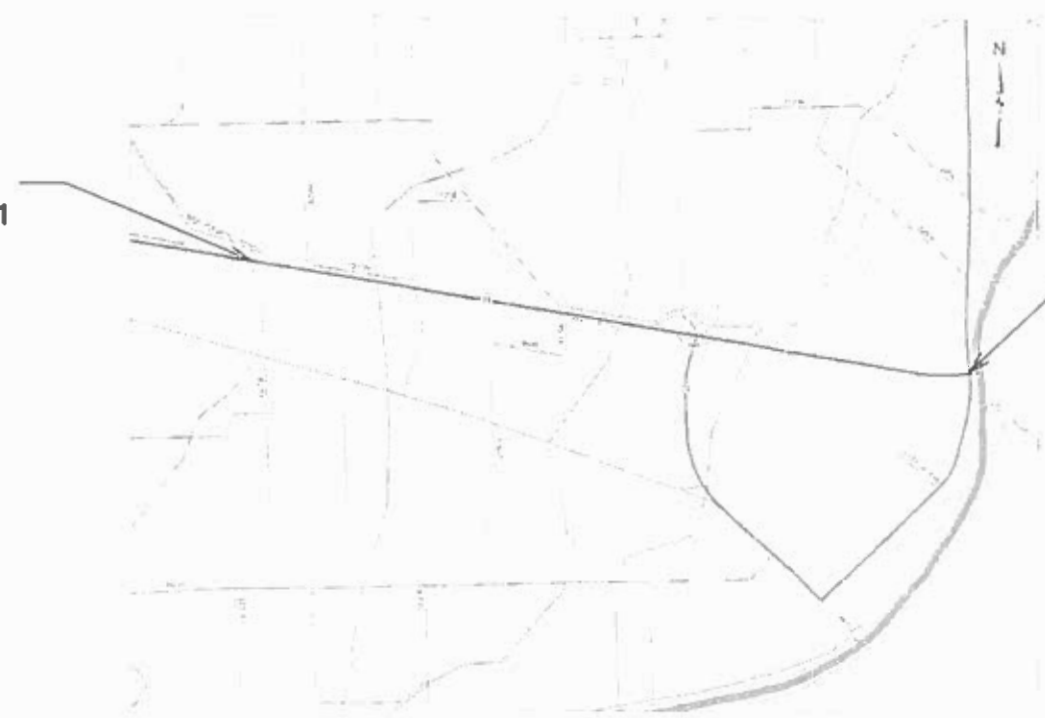


FAP ROUTE 327 (US 50)
SECTION (51-24)RS-3 & (51-24-2)RS-1
LAWRENCE COUNTY
BEGINS STA. 806 + 34.43



FULL SIZE PLANS HAVE BEEN PREPARED USING STANDARD ENGINEERING SCALES. REDUCED SIZED PLANS WILL NOT CONFORM TO STANDARD SCALES. IN MAKING MEASUREMENTS ON REDUCED PLANS, THE ABOVE SCALES MAY BE USED.

J.U.L.I.E.
JOINT UTILITY LOCATION INFORMATION FOR EXCAVATORS
1-800-892-0123
OR 811



FAP ROUTE 327 (US 50)
SECTION (51-24)RS-3 & (51-24-2)RS-1
LAWRENCE COUNTY
ENDS STA. 1063 + 65.00

PROJECT ENGINEER: DEBRA BARRETT
PROJECT MANAGER: LEVI LUND

CONTRACT NO. 74952

GROSS LENGTH = 25,730.57 FT. = 4.873 MILES
NET LENGTH = 24,549.22 FT. = 4.649 MILES

STATE OF ILLINOIS
DEPARTMENT OF TRANSPORTATION

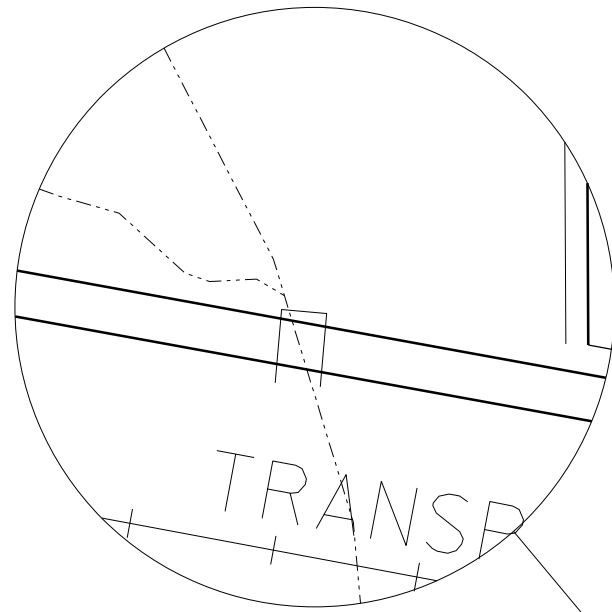
SUBMITTED January 10 2020
Jeffrey P. Munk
REGIONAL ENGINEER

March 20 2020
CA. ETC
ENGINEER OF DESIGN AND ENVIRONMENT

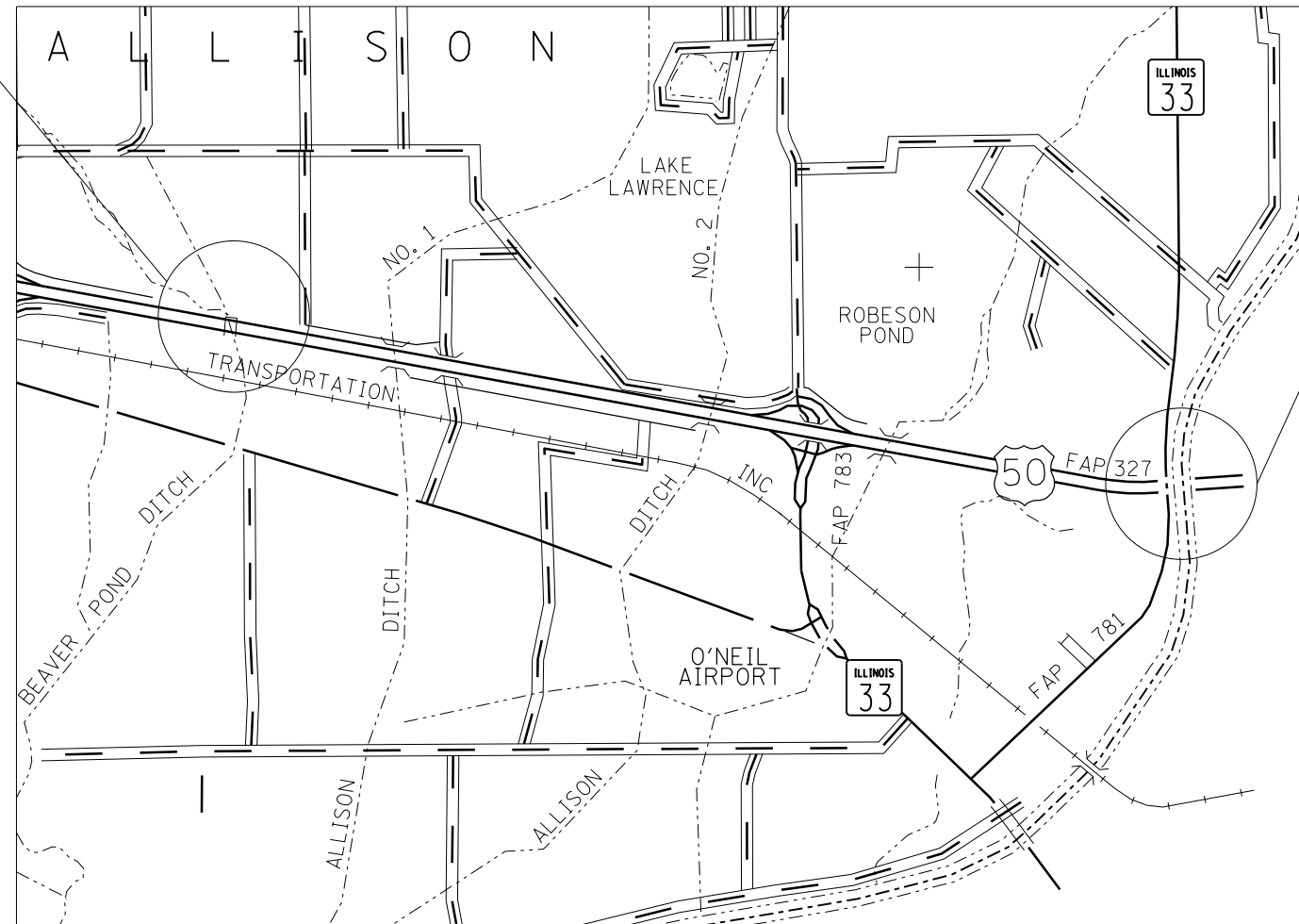
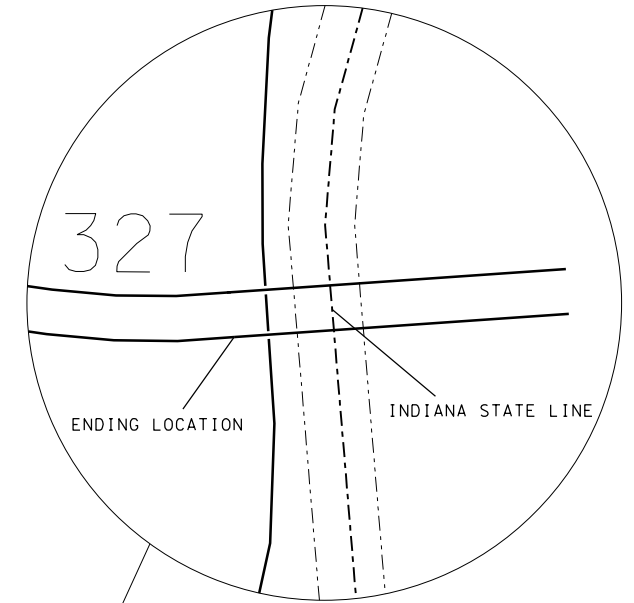
March 20 2020
James J. ...
DIRECTOR OF HIGHWAYS PROJECT IMPLEMENTATION 13

PRINTED BY THE AUTHORITY
OF THE STATE OF ILLINOIS

BEGINNING STA. 806+34.43
EAST END OF BRIDGE AT
BEAVER POND DITCH



END STA. 1063+65.00
WEST END OF BRIDGE AT
INDIANA STATE LINE



MODEL: Default
 FILE: h:\m\c\p\pub\barroom.dwg
 PROJECT: 74952\CADD\Drawings\DOT_Offices\Drawings\74952-ctc\enote.dgn

USER NAME = steffemk	DESIGNED -	REVISED -
	DRAWN -	REVISED -
PLOT SCALE = 100,0000' / in.	CHECKED -	REVISED -
PLOT DATE = 1/15/2020	DATE -	REVISED -

**STATE OF ILLINOIS
DEPARTMENT OF TRANSPORTATION**

LOCATION MAP

SCALE: SHEET OF SHEETS STA. TO STA.

F.A.P. RTE.	SECTION	COUNTY	TOTAL SHEETS	SHEET NO.
327	(51-24)6(51-24-2) PVMT PRSV	LAWRENCE	7	3
CONTRACT NO. 74952				
ILLINOIS FED. AID PROJECT				

80% FED
20% STATE

SUMMARY OF QUANTITIES			TOTAL QUANTITIES	CONSTRUCTION TYPE CODE		
CODE NO	ITEM	UNIT		0005		
40400020	BUMP REMOVAL	EACH	22	22		
40500061	CAPE SEAL, TYPE II	SO YD	133657	133657		
44200140	PAVEMENT PATCHING, TYPE I, 12 INCH	SO YD	1338	1338		
67100100	MOBILIZATION	L SUM	1	1		
70100205	TRAFFIC CONTROL AND PROTECTION, STANDARD	EACH	1	1		
	701401					
70100420	TRAFFIC CONTROL AND PROTECTION, STANDARD	EACH	2	2		
	701411					
70107025	CHANGEABLE MESSAGE SIGN	CAL DA	28	28		
70300100	SHORT TERM PAVEMENT MARKING	FOOT	24549	24549		
70300240	TEMPORARY PAVEMENT MARKING - LINE 6"	FOOT	113812	113812		
* 78000400	THERMOPLASTIC PAVEMENT MARKING-LINE 6"	FOOT	113812	113812		
* 78000500	THERMOPLASTIC PAVEMENT MARKING-LINE 8"	FOOT	410	410		
* 78100100	RAISED REFLECTIVE PAVEMENT MARKER	EACH	616	616		
78300200	RAISED REFLECTIVE PAVEMENT MARKER REMOVAL	EACH	616	616		

* SPECIALTY ITEM

MODEL: Default
FILE NAME: P:\p1p1nroom.dat\illinois.gov\PWIDOT\Documents\DOT_Offices\District 7\Projects\174952\CADDData\CAD\Sheets\174952-shs-S00.dgn

USER NAME = steffemk	DESIGNED -	REVISED -
	DRAWN -	REVISED -
PLOT SCALE = 100.0000' / in.	CHECKED -	REVISED -
PLOT DATE = 1/15/2020	DATE -	REVISED -

**STATE OF ILLINOIS
DEPARTMENT OF TRANSPORTATION**

SUMMARY OF QUANTITIES

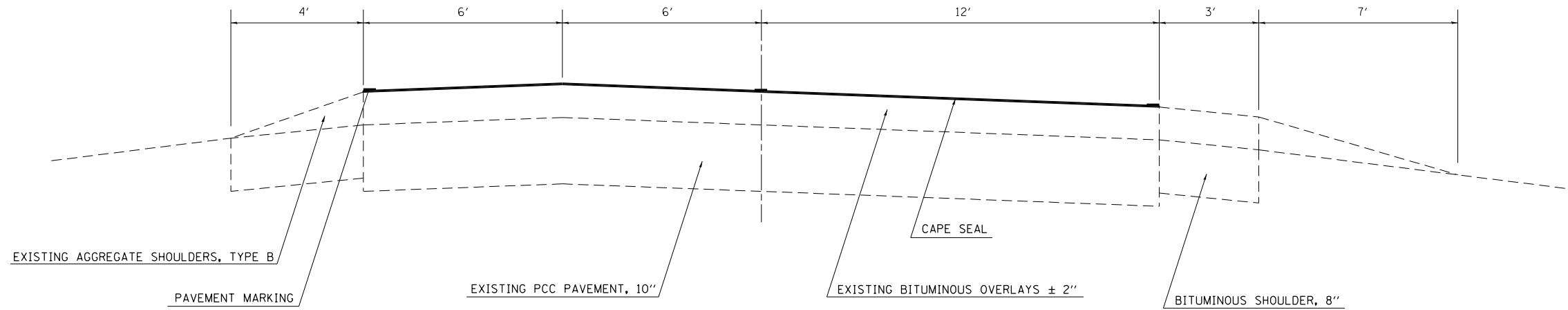
SCALE: SHEET OF SHEETS STA. TO STA.

F.A.P. RTE.	SECTION	COUNTY	TOTAL SHEETS	SHEET NO.
327	(51-24)&(51-24-2)PVMT PRSV	LAWRENCE	7	4
			CONTRACT NO. 74952	
ILLINOIS				

TYPICAL CROSS SECTION

STA 806+34.43 TO STA 940+06.81

NOTE: EBL SHOWN - ROTATE
ABOUT ϕ FOR WBL ON TANGENT

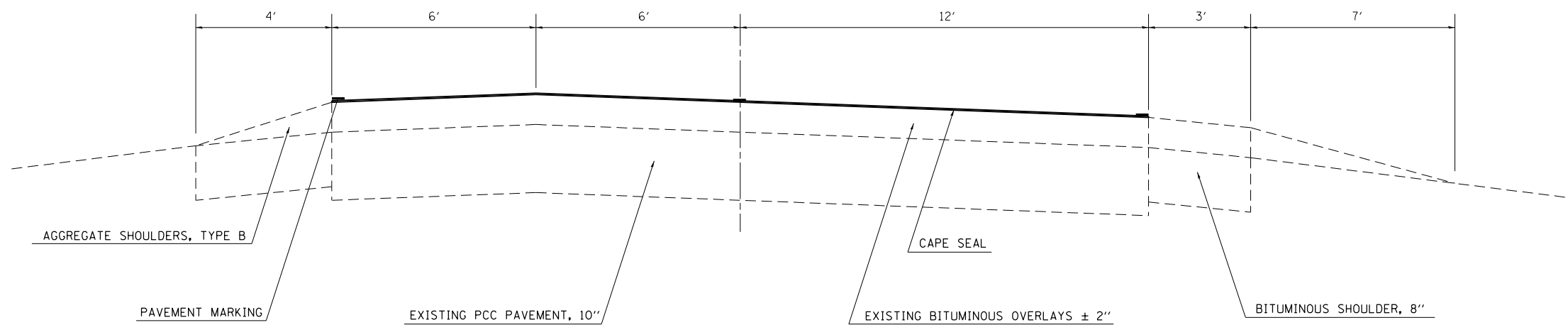


NOTE: NOT DRAWN TO SCALE

TYPICAL CROSS SECTION

STA 940+06.81 TO STA 1063+65

NOTE: EBL SHOWN - ROTATE
ABOUT ϕ FOR WBL ON TANGENT



NOTE: NOT DRAWN TO SCALE

MODEL: Default
FILE: h:\m\c\p\suplanroom.d\at\illinois.gov\PI\DOT\Documents\DOT_Offices\Dir\ctc_7\Projects\74952\CADD\Drawings\DOT\74952-ctc\typical.dgn

USER NAME = steffenmk	DESIGNED -	REVISED -
	DRAWN -	REVISED -
PLOT SCALE = 100.0000' / in.	CHECKED -	REVISED -
PLOT DATE = 1/15/2020	DATE -	REVISED -

**STATE OF ILLINOIS
DEPARTMENT OF TRANSPORTATION**

TYPICALS

SCALE: SHEET OF SHEETS STA. TO STA.

F.A.P. RTE.	SECTION	COUNTY	TOTAL SHEETS	SHEET NO.
327	(51-24)6(51-24-2) PVMT PR5V	LAWRENCE	7	5
			CONTRACT NO. 74952	
			ILLINOIS FED. AID PROJECT	

MODEL: Default
 FILE: h:\m15c_p\pub\h15c\room\dat\illinois\pwr\WIDOT\Documents\DOT_Offices\Illinet_7\Projects\74952\CADD\DATA\CAD\Sheet\DOT74952-sht-schedule.dgn

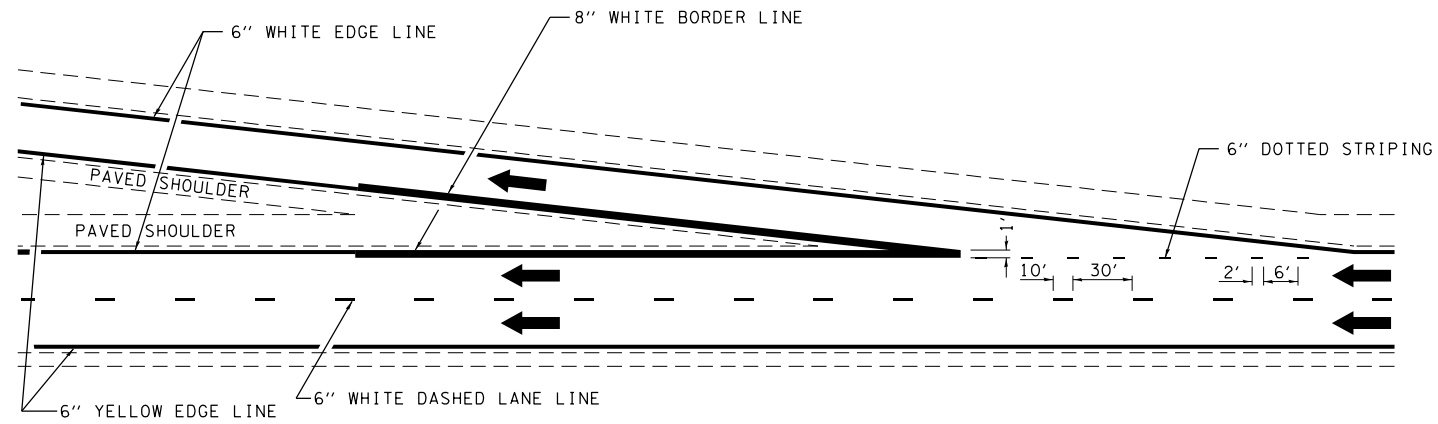
SCHEDULE OF QUANTITIES											
STATION TO STATION			LENGTH (FOOT)	WIDTH (FOOT)	CAPE SEAL, TYPE II	SHORT TERM PAVEMENT MARKING	TEMPORARY PAVEMENT MARKING LINE, 6"	THERMOPLASTIC PAVEMENT MARKING LINE, 6"	THERMOPLASTIC PAVEMENT MARKING, LINE, 8"	RAISED REFLECTIVE PAVEMENT MARKER	RAISED REFLECTIVE PAVEMENT MARKER REMOVAL
					40500061 (SQ YD)	70300100 (FOOT)	70300240 (FOOT)	78000400 (FOOT)	78000500 (FOOT)	78100100 (EACH)	78300200 (EACH)
EAST BOUND											
806+34.43	TO	849+44.81	4310.4	24.5	11733.8	2155.2	9698.4	9698.4	0.0	54	54
849+44.81	TO	851+45.19	200.4	24.5	0.0	0.0	450.9	450.9	0.0	0	0
851+45.19	TO	864+38.89	1293.7	24.5	3521.7	646.8	2910.8	2910.8	0.0	16	16
864+38.89	TO	865+50.89	112.0	24.5	0.0	0.0	252.0	252.0	0.0	0	0
865+50.89	TO	935+53.19	7002.3	24.5	19061.8	3501.2	15755.2	15755.2	0.0	88	88
935+53.19	TO	940+06.81	453.6	24.5	0.0	0.0	1020.4	1020.4	0.0	0	0
940+06.81	TO	965+60.68	2553.9	24.5	6952.2	1276.9	5423.3	5423.3	125.0	32	32
965+60.68	TO	967+66.86	206.2	24.5	0.0	0.0	463.9	463.9	0.0	0	0
967+66.86	TO	985+06.79	1739.9	24.5	4736.5	870.0	3257.8	3257.8	80.0	22	22
985+06.79	TO	987+15.96	209.2	24.5	0.0	0.0	470.7	470.7	0.0	0	0
987+15.96	TO	1063+65.00	7649.0	24.5	20822.4	3824.5	17210.3	17210.3	0.0	96	96
WEST BOUND											
806+34.43	TO	849+44.81	4310.4	24.5	11733.8	2155.2	9698.4	9698.4	0.0	54	54
849+44.81	TO	851+45.19	200.4	24.5	0.0	0.0	450.9	450.9	0.0	0	0
851+45.19	TO	864+05.11	1259.9	24.5	3429.8	630.0	2834.8	2834.8	0.0	16	16
864+05.11	TO	865+17.11	112.0	24.5	0.0	0.0	252.0	252.0	0.0	0	0
865+17.11	TO	935+53.19	7036.1	24.5	19153.8	3518.0	15831.2	15831.2	0.0	88	88
935+53.19	TO	940+06.81	453.6	24.5	0.0	0.0	1020.6	1020.6	0.0	0	0
940+06.81	TO	965+39.14	2532.3	24.5	6893.6	1266.2	5007.7	5007.7	80.0	32	32
965+39.14	TO	967+45.32	206.2	24.5	0.0	0.0	463.9	463.9	0.0	0	0
967+45.32	TO	985+06.79	1761.5	24.5	4795.1	880.7	3657.4	3657.4	125.0	22	22
985+06.79	TO	987+15.96	209.2	24.5	0.0	0.0	470.7	470.7	0.0	0	0
987+15.96	TO	1063+65.00	7649.0	24.5	20822.4	3824.5	17210.3	17210.3	0.0	96	96
TOTALS					133657	24549	113812	113812	410	616	616

USER NAME = steffenmk	DESIGNED -	REVISED -
	DRAWN -	REVISED -
PLOT SCALE = 100.0000' / in.	CHECKED -	REVISED -
PLOT DATE = 1/15/2020	DATE -	REVISED -

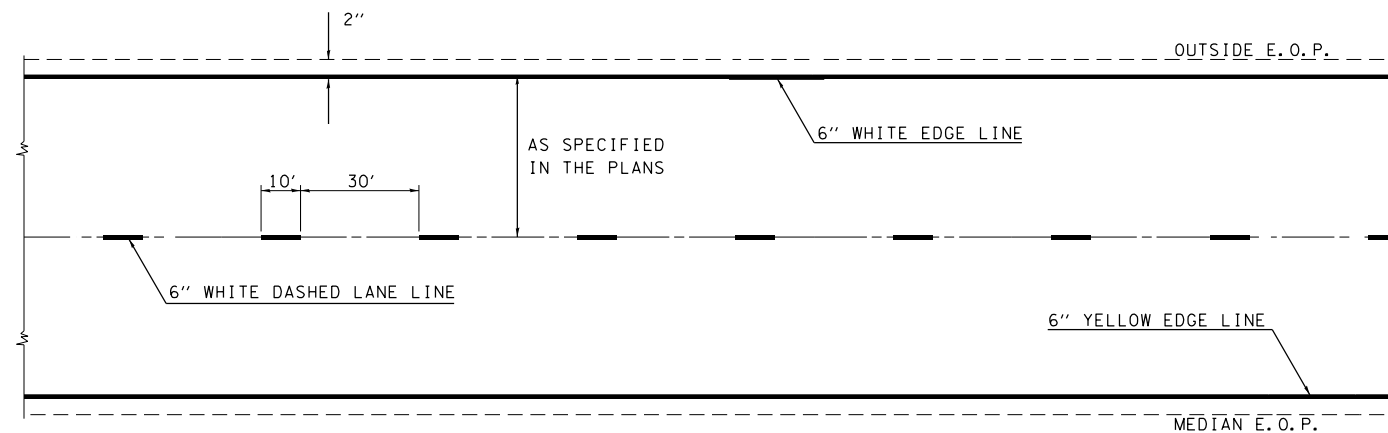
**STATE OF ILLINOIS
 DEPARTMENT OF TRANSPORTATION**

SCHEDULE OF QUANTITIES			
SCALE:	SHEET	OF	SHEETS
	STA.	TO	STA.

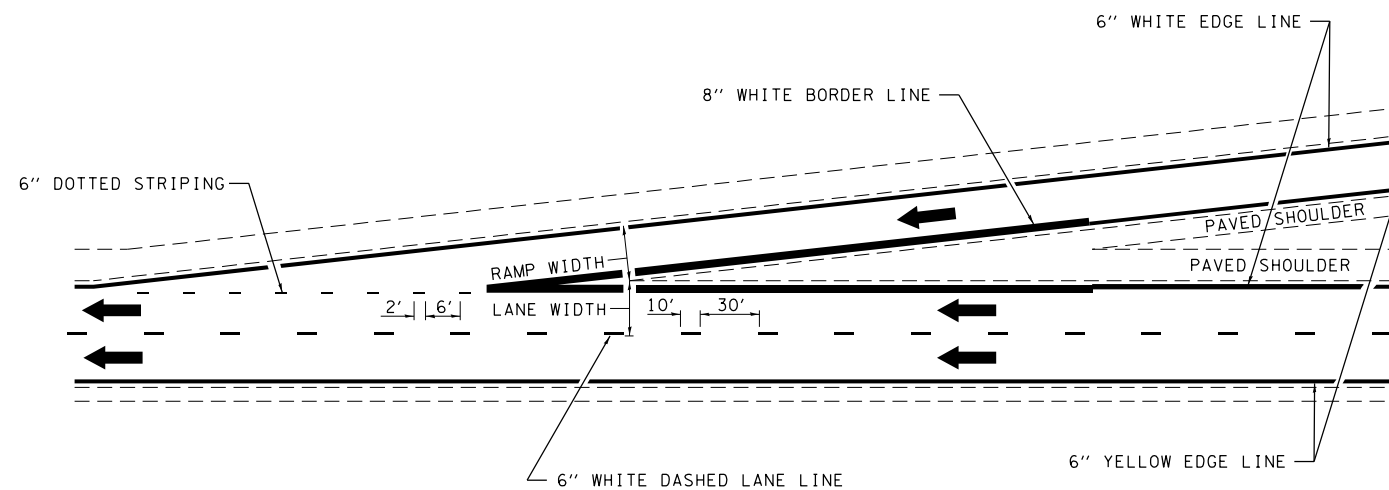
F.A.P. RTE.	SECTION	COUNTY	TOTAL SHEETS	SHEET NO.
327	(51-24)6(51-24-2) PVMT PRSV	LAWRENCE	7	6
CONTRACT NO. 74952				
ILLINOIS			FED. AID PROJECT	



TYPICAL EXIT RAMP MARKING



TYPICAL CENTERLINE & EDGELINE MARKINGS



TYPICAL ENTRANCE RAMP MARKING

NOT TO SCALE

MODEL: Default
FILE: h:\a\c\p\pub\harcross.dwg
PROJECT: 74952\CAAD\Drawings\DOT - Offices\Detail\74952-CH-Details.dgn

USER NAME = steffenmk	DESIGNED -	REVISED -
	DRAWN -	REVISED -
PLOT SCALE = 100.0000' / in.	CHECKED -	REVISED -
PLOT DATE = 1/15/2020	DATE -	REVISED -

STATE OF ILLINOIS
DEPARTMENT OF TRANSPORTATION

PAVEMENT MARKING DETAIL

SCALE: SHEET OF SHEETS STA. TO STA.

DISTRICT 7 DETAIL NO. 78000002

F.A.P. RTE.	SECTION	COUNTY	TOTAL SHEETS	SHEET NO.
327	(51-24)&(51-24-2)PVMT PRSV	LAWRENCE	7	7
CONTRACT NO. 74952				
ILLINOIS FED. AID PROJECT				