

F A P R T E	SECTION	COUNTY	TOTAL SHEETS	SHEET NO.
752	(23-2)(W,V) PVMT PRSV	FAYETTE	7	1
ILLINOIS			CONTRACT NO. 74954	

FOR INDEX OF SHEETS, SEE SHEET NO. 2

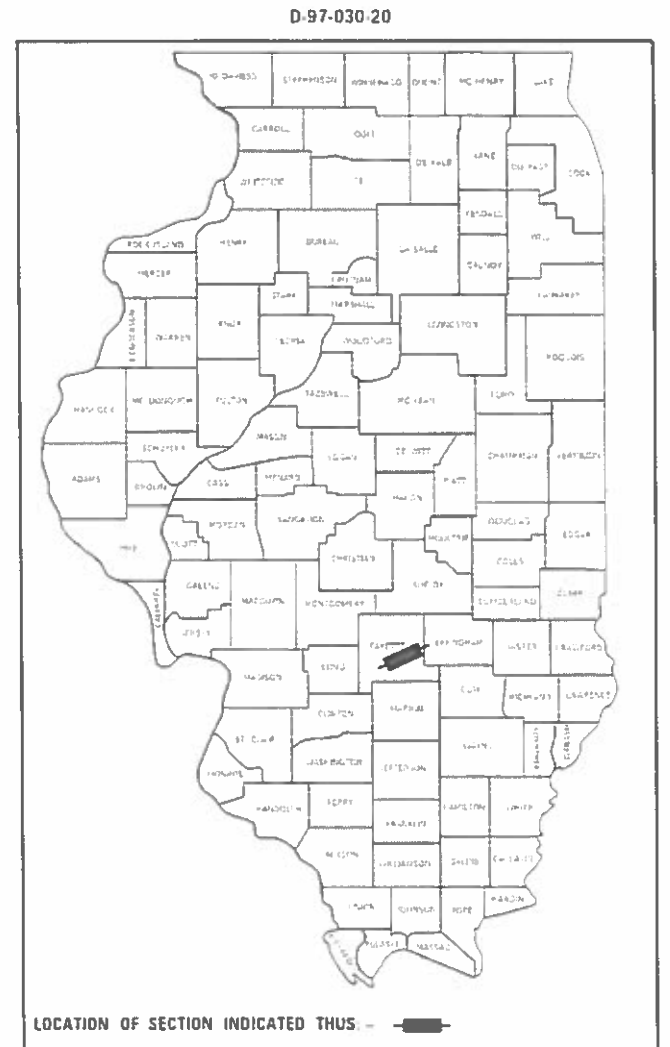
# PROPOSED HIGHWAY PLANS

FAP ROUTE 752 (US 40 / ILL 185)  
 SECTION (23-2)(W,V) PVMT PRSV  
 PROJECT STP-DAQD(390)  
 MICROSURFACING SINGLE PASS  
 FAYETTE COUNTY

C-97-031-20

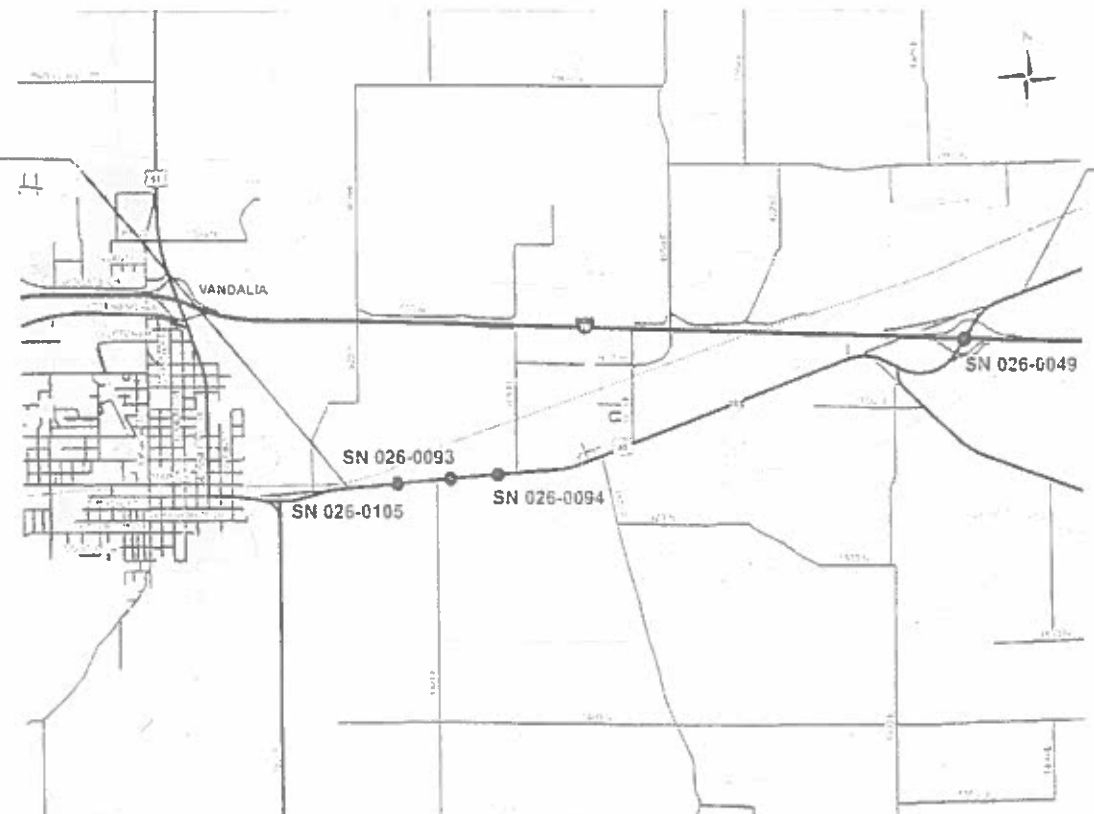
### STATION EQUATIONS

- STA 65 + 48.71 BK = STA 33 + 55.00 AH
- STA 174 + 15.40 BK = STA 0 + 00.00 AH
- STA 33 + 77.00 BK = STA 102 + 92.10 AH
- STA 119 + 32.10 BK = STA 119 + 34.57 AH
- STA 120 + 94.05 BK = STA 119 + 99.41 AH

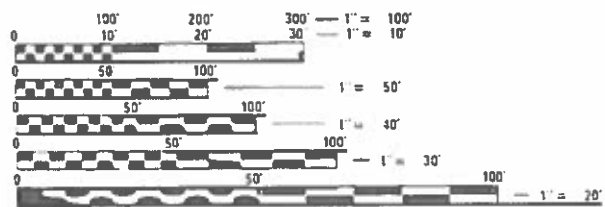


PROJECT BEGINS  
STATION 49 + 82

PROJECT ENDS  
STATION 162 + 95



ADT = 3535 (2019)



FULL SIZE PLANS HAVE BEEN PREPARED USING STANDARD ENGINEERING SCALES. REDUCED SIZED PLANS WILL NOT CONFORM TO STANDARD SCALES. IN MAKING MEASUREMENTS ON REDUCED PLANS, THE ABOVE SCALES MAY BE USED.

J.U.L.I.E.  
 JOINT UTILITY LOCATION INFORMATION FOR EXCAVATORS  
 1-800-892-0123  
 OR 811

PROJECT ENGINEER: BRIAN LEWIS (217)-342-8360  
 PROJECT MANAGER: MYRA OLTMAN

GROSS LENGTH = 25,116.6 FT. = 4.76 MILE  
 NET LENGTH = 23,384.6 FT. = 4.43 MILE

STATE OF ILLINOIS  
 DEPARTMENT OF TRANSPORTATION

SUBMITTED January 14, 2020  
*Jeffrey P. Myrka*  
 REGIONAL ENGINEER

March 20, 2020  
*Scott A. Etk*  
 ENGINEER OF DESIGN AND ENVIRONMENT

March 20, 2020  
*James J. Jones*  
 DIRECTOR OF HIGHWAYS PROJECT IMPLEMENTATION

PRINTED BY THE AUTHORITY  
 OF THE STATE OF ILLINOIS

## GENERAL NOTES

THIS PROJECT IS LOCATED ON FAP ROUTE 752 (US ROUTE 40 & IL ROUTE 185) IN FAYETTE COUNTY FROM 0.1 MILE EAST OF US ROUTE 51 TO THE FRONTAGE ROAD 1625 WEST OF BROWNSTOWN. THE PROJECT INCLUDES HOT-MIX ASPHALT SURFACE REMOVAL, SPECIAL, BITUMINOUS MATERIALS (TACK COAT), MICROSURFACING SINGLE PASS, PAVEMENT MARKING, RAISED RELECTIVE PAVEMENT MARKERS TRAFFIC CONTROL AND OTHER NECESSARY TO COMPLETE THE PROJECT.

THE ENGINEER WILL BE THE SOLE JUDGE CONCERNING CURING TIME FOR THE MICRO-SURFACING AND WHEN THE ROADWAY WILL BE OPENED TO TRAFFIC.

MICROSURFACING SINGLE PASS WILL BE CONSTRUCTED ON STRUCTURE # 026-0049. HOT-MIX ASPHALT SURFACE REMOVAL, SPECIAL WILL OMITTED ON THIS STRUCTURE.

THE RAISED REFLECTIVE PAVEMENT MARKERS ARE ALL TWO-WAY AMBER REFLECTORS

THE TOTAL QUANTITY FOR TEMPORARY PAVEMENT MARKING LINE IS MADE UP OF 50,234 FEET WHITE AND 25,995 FEET YELLOW.

THE TOTAL QUANTITY FOR PAINT PAVEMENT MARKING LINE 4" IS MADE UP OF 50,234 FEET WHITE AND 25,995 FEET YELLOW.

A QUANITIY OF LONGITUDINAL JOINT REPAIR HAS BEEN INCLUDED TO FILL VOIDS LEFT BY THE REMOVAL OF RASIED REFLECTIVE PAVEMENT MARKERS.

THE FOLLOWING RATES OF APPLICATION HAVE BEEN USED IN CALCULATIING PLAN QUANTITIES:

LONGITUDINAL JOINT REPAIR OF 2.016 TON/CU YD  
BITUMINOUS MATERIALS (TACK COAT) 0.025 LBS/SQ FT

THE FOLLOWING IS A SUGGESTED SEQUENCE OF APPLICATION FOR PAVEMENT MARKINGS:

1. HOT-MIX ASPHALT SURFACE REMOVAL, SPECIAL FOLLOWED IMMEDIATELY BY SHORT TERM PAVEMENT MARKING. (PAINT) CONSTRUCT PAVEMENT MARKING LEFT OR RIGHT OF CENTERLINE ON LANE TO BE MICROSURFACED LAST.
2. CONTRUCT MICRO-SURFACING IN THE LANE WITHOUT THE SHORT TERM PAVEMENT MARKING. ONCE THE MICRO-SURFACING HAS CURED, PLACE SHORT TERM PAVEMENT MARKING TYPE 1 MARKING TAPE.
3. WITHIN THREE DAYS AFTER MICROSURFACING IS CONSTRUCTED TEMPORARY PAVEMENT MARKING SHALL BE PLACED. THIS SHALL BE PAINT. TAPE WILL NOT BE ALLOWED FOR THE TEMPORARY PAVEMENT MARKING.
4. A MINIMUM OF 30 DAYS LATER PAINT PAVEMENT MARKING, 4" SHALL BE PLACED.

## INDEX OF SHEETS

- |     |                                 |
|-----|---------------------------------|
| 1   | COVER SHEET                     |
| 2   | GENERAL NOTES & INDEX OF SHEETS |
| 3   | SUMMARY OF QUANTITIES           |
| 4   | TYPICALS                        |
| 5-6 | SCHEDULE OF QUANTITIES          |
| 7   | PLAN SHEET                      |

## HIGHWAY STANDARDS

- 701001-02 OFF-ROAD OPERATIONS, 2L, 2W, MORE THAN 15' AWAY
- 701006-05 OFF-ROAD OPERATIONS, 2L, 2W, MORE THAN 15' TO 24' FROM PAVEMENT EDGE
- 701306-04 LANE CLOSURE, 2L, 2W, SLOW MOVING OPERATIONS DAY ONLY, FOR SPEEDS > 45
- 701311-03 LANE CLOSURE, 2L, 2W, MOVING OPERATIONS - DAY ONLY
- 701901-08 TRAFFIC CONTROL DEVICES
- 780001-05 TYPICAL PAVEMENT MARKING
- 781001-04 TYPICAL APPLICATIONS RASIED REFLECTIVE PAVEMENT MARKERS

REV-SEP

MODEL: Default  
FILE NAME: P:\pblanroom.dwt\illinois.gov\PIWIDOT\Documents\DOT\_Offices\District\_7\Projects\74954\CADD\Sheet\DOT\_74954-shc-genote.dgn

USER NAME = steffemk	DESIGNED -	REVISED -
	DRAWN -	REVISED -
PLOT SCALE = 100.0000' / in.	CHECKED -	REVISED -
PLOT DATE = 1/15/2020	DATE -	REVISED -

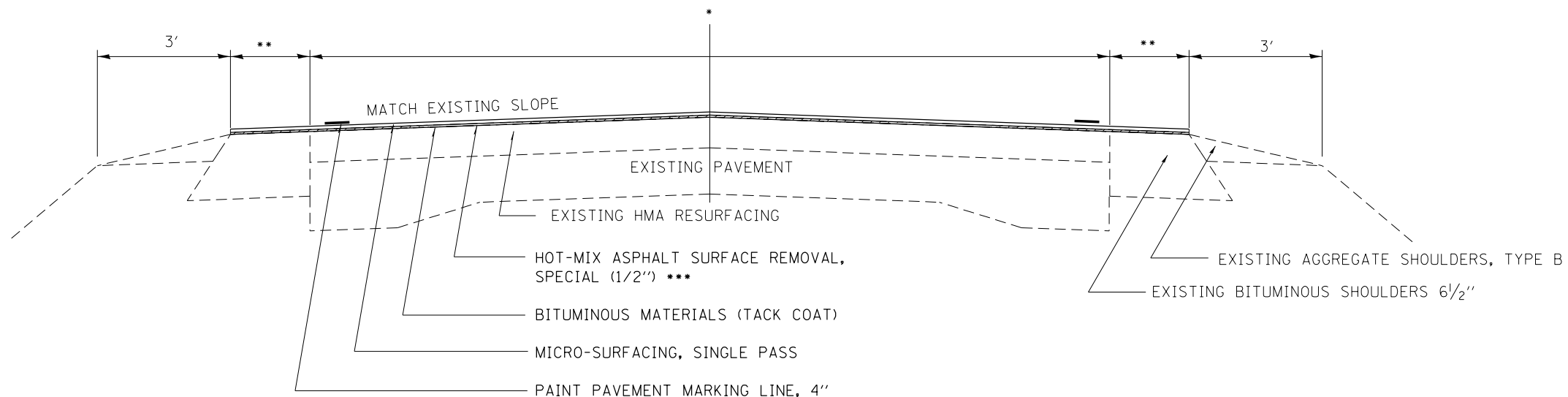
**STATE OF ILLINOIS  
DEPARTMENT OF TRANSPORTATION**

**GENERAL NOTES, INDEX OF SHEETS  
LIST OF STANDARDS**

SCALE: SHEET OF SHEETS STA. TO STA.

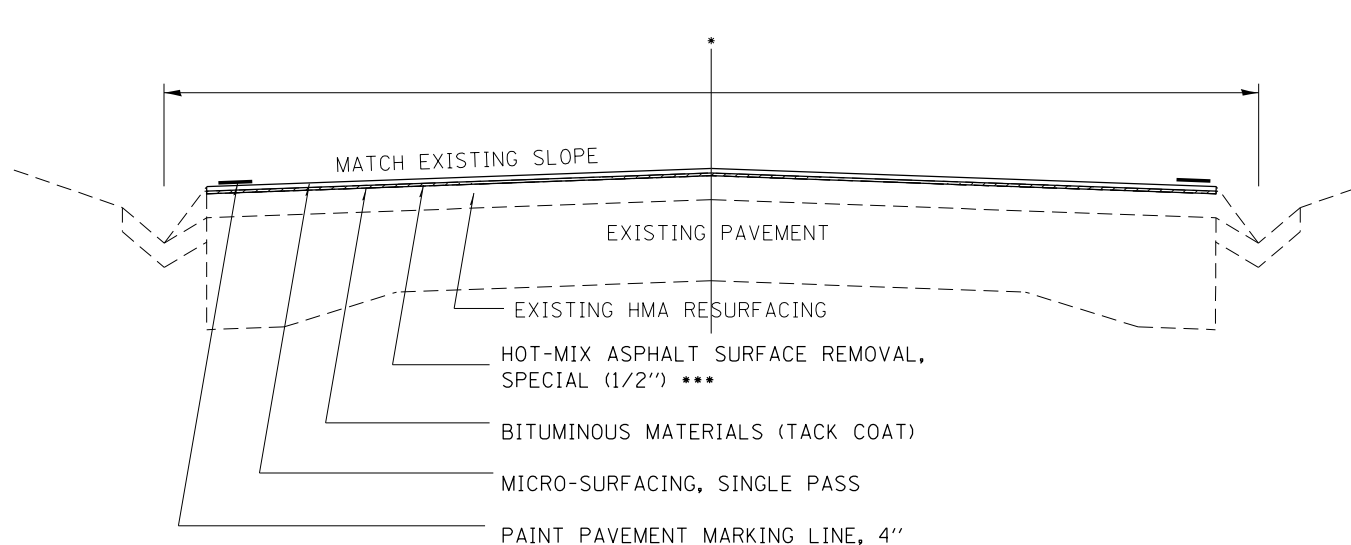
F.A.P. RTE.	SECTION	COUNTY	TOTAL SHEETS	SHEET NO.
752	(23-3)(W.V) PVMT PRSV	FAYETTE	7	2
CONTRACT NO. 74954				
ILLINOIS FED. AID PROJECT				



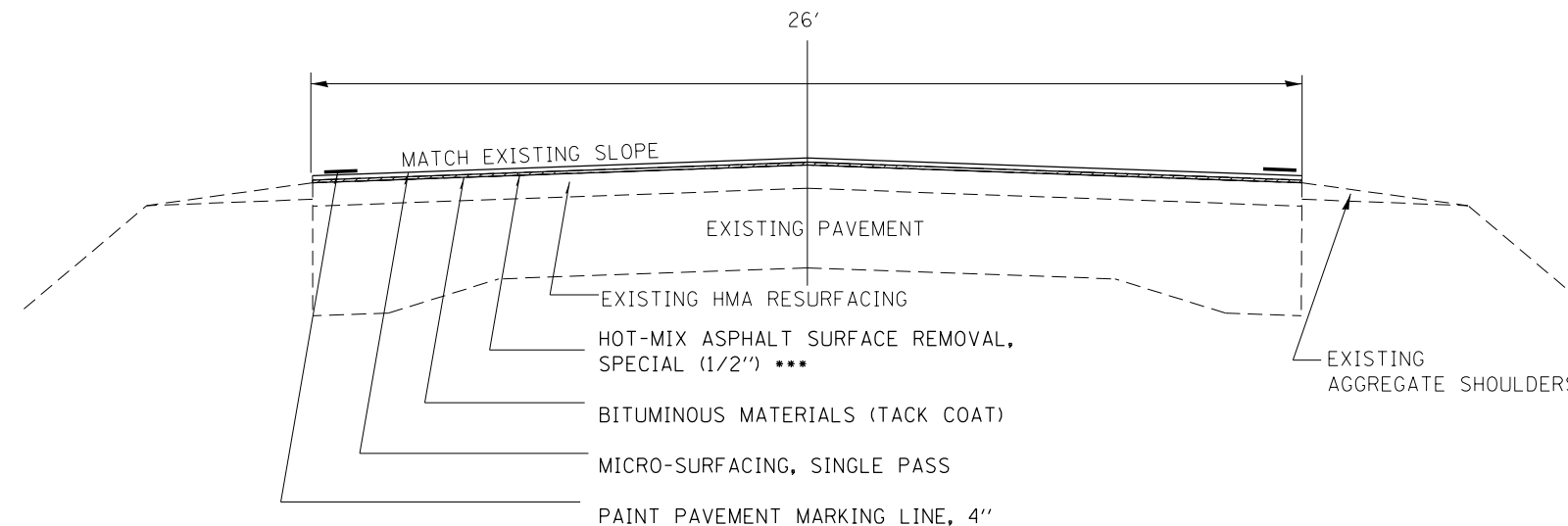


\*\*\* MILL 1/2" AT CENTERLINE AND CARRY 3/16" PER FOOT CROSS-SLOPE TO THE EDGE OF PAVEMENT. MATCH THE EXISTING CROSS-SLOPE IN ANY SUPER-ELEVATION AREAS. DEPTH AT THE CENTERLINE CAN BE INCREASED BY THE RESIDENT ENGINEER TO ELIMINATE RUTTING IF NEEDED. MILLING DEPTH SHOULD BE ADJUSTED AT INTERCHANGE RAMPS TO ENSURE POSITIVE DRAINAGE WHERE THE EDGE OF PAVEMENT MEETS THE RAMPS, IF NEEDED.

STA 49+64 TO STA 59+00: \* = 34' TO 22', \*\* = 3'  
 STA 59+00 TO STA 65+48.71 : \* = 22', \*\* = 3'  
 STA 65+48.71 BK = STA 33+55.00 AH  
 STA 33+55.00 TO STA 109+00: \* = 26', \*\* = 2'  
 STA 109+00 TO STA 174+15: \* = 26', \*\* = 0'  
 STA 174+15.40 BK = STA 0+00.00 AH  
 STA 0+00 TO STA 33+77: \* = 26', \*\* = 0'  
 STA 33+77.00 BK = STA 102+92.10 AH  
 STA 102+92 = STA 107+04: \* = 26', \*\* = 0'



STA 107+04 TO STA 119+32: \* = 22'  
 STA 119+32.10 BK = STA 119+34.57 AH  
 STA 119+34.57 TO STA 120+94.00  
 STA 120+94.00 BK = 119+99.41 AH  
 STA 119+99.41 TO STA 141+32: \* = 24'



STA 144+90 TO STA 148+08  
 STA 151+77 TO STA 154+61  
 STA 158+64 TO STA 162+95

NOTE: TYPICALS NOT DRAWN TO SCALE

MODEL: Default  
 FILE: h:\mhc\p\pub\harcross.dwg  
 PROJECT: 74954\CADD\DATA\CADD\Drawings\DOT Office\Drawings\74954-4-1-1-1-1.dwg

USER NAME = steffenmk	DESIGNED -	REVISED -
	DRAWN -	REVISED -
PLOT SCALE = 100,0000' / in.	CHECKED -	REVISED -
PLOT DATE = 1/16/2020	DATE -	REVISED -

**STATE OF ILLINOIS  
 DEPARTMENT OF TRANSPORTATION**

**TYPICAL SECTIONS**

SCALE: SHEET OF SHEETS STA. TO STA.

F.A.P. RTE.	SECTION	COUNTY	TOTAL SHEETS	SHEET NO.
752	(23-2)(W,V)PVMT PRSV	FAYETTE	7	4
CONTRACT NO. 74954				
ILLINOIS FED. AID PROJECT				

PROTECT AND PERSERVE				
STA	•OFFSET	TYPE	DESCRIPTION	PROPOSED PROTECT & PRESERVE
52+67.89	0	PT	DISK FOUND	Alum. IDOT DISK
56+11.12	1.0 LT	PC	DISK FOUND	Alum. IDOT DISK
63+48.97 BK 31+23.58 AH	0	PT	DISK FOUND	Alum. IDOT DISK
32+00	0	POT	DISK FOUND	Alum. IDOT DISK
43+99.97	0	PI KINK	DISK FOUND	Alum. IDOT DISK
64+95.63	0	POT	DISK FOUND	Alum. IDOT DISK
73+95.69	0	POT	DISK FOUND	Alum. IDOT DISK
80+00	0	POT	DISK FOUND	Alum. IDOT DISK
87+00	0	POT	DISK FOUND	Alum. IDOT DISK
100+70.88	0	POT	DISK FOUND	Alum. IDOT DISK
76+68.27	0	POT	DISK FOUND	Alum. IDOT DISK
98+27.00	0	POT	MAG NAIL IN CL ROUTE 40	Alum. IDOT DISK
104+28.81	0	PC	DISK FOUND	Alum. IDOT DISK
117+85.00	0	PT	DISK FOUND	Alum. IDOT DISK
121+23 (RT 40) 14+00 (RT 185)	0	PI INTERSECT	DISK FOUND IN CL ROUTE 40 @ IL ROUTE 185	Alum. IDOT DISK
122+33	0	PC	DISK FOUND	Alum. IDOT DISK
143+61.34	0	PT	DISK FOUND	Alum. IDOT DISK

PAVEMENT PRESERVATION SCHEDULE							
	STATION	TO	STATION	HOT-MIX ASPHALT SURFACE REMOVAL, SPECIAL SQ YD	BITUMINOUS MATERIALS (TACK COAT) POUND	MICRO-SURFACING, SINGLE PASS SQ YD	LONGITUDINAL JOINT REPAIR TON
	49+64.00	TO	59+00.00	3536	795.6	3536	0.04
	59+00.00	TO	65+00.00	1867	420	1867	0.03
	65+00.00	TO	65+48.71	163	36.55	163	0.00
STATION EQUATION	65+48.71	=	33+55.00				
	33+55.00	TO	49+15.50	5202	1170.375	5202	0.07
BRDGE OMISSION 026-0105	49+15.50	TO	53+68.50				
	53+68.50	TO	68+30.00	4872	1096.125	4872	0.07
BRIDGE OMISSION 026-0093	68+30.00	TO	69+64.00				
	69+64.00	TO	83+86.00	4740	1066.5	4740	0.06
BRDGE OMISSION 026-0094	83+86.00	TO	85+45.00				
	85+45.00	TO	109+00.00	7850	1766.25	7850	0.10
	109+00.00	TO	174+15.00	18822	4234.75	18822	0.29
STATION EQUATION	174+15.00	=	0+00.00				
	0+00.00	TO	33+77.00	9756	2195.05	9756	0.15
STATION EQUATION	33+77.00	=	102+92.10				
	102+92.10	TO	107+04.00	1190	267.75	1190	0.02
	107+04.00	TO	119+32.00	3002	675.4	3002	0.05
STATION EQUATION	119+32.00	=	119+34.57				
	119+34.57	TO	120+94.00	426	95.675	426	0.01
STATION EQUATION	120+94.00	=	119+99.41				
	119+99.41	TO	141+32.00	5687	1279.575	5687	0.10
	141+32.00	TO	144+90.00	995	223.75	995	0.02
	144+90.00	TO	148+08.00	919	206.7	919	0.01
BRIDGE 026-0049	148+08.00	TO	151+77.00	0	0	1378	0.02
	151+77.00	TO	154+61.00	821	184.6	821	0.01
	154+61.00	TO	158+64.00	1165	261.95	1165	0.02
	158+64.00	TO	162+95.00	1246	280.15	1246	0.02
	TOTAL			72259	16257	73637	1.09

MODEL: Default  
 FILE: h:\mhc\p\pub\haronom.dwg  
 PROJECT: 7495\CAAD\DATA\CAD\Drawings\DOT Office\Drawings\7495\pvschedule.dgn

USER NAME = steffemk	DESIGNED -	REVISED -
	DRAWN -	REVISED -
PLOT SCALE = 40.0000 ' / in.	CHECKED -	REVISED -
PLOT DATE = 1/15/2020	DATE -	REVISED -

**STATE OF ILLINOIS  
DEPARTMENT OF TRANSPORTATION**

**PAVEMENT PRESERVATION PROTECTING OR  
RESETTING SURVEY MARKERS SCHEDULES**

SCALE: SHEET OF SHEETS STA. TO STA.

F.A.P. RTE.	SECTION	COUNTY	TOTAL SHEETS	SHEET NO.
752	(23-3)(W.V) PVMT PRSV	FAYETTE	7	5
CONTRACT NO. 74954				
ILLINOIS FED. AID PROJECT				

PAVEMENT MARKING SCHEDULE

	STATION		STATION	RAISED REFLECTIVE PAVEMENT MARKER REMOVAL EACH	RAISED REFLECTIVE PAVEMENT MARKER EACH	SHORT TERM PAVEMENT MARKING (MILLED SURFACE) FOOT	SHORT TERM PAVEMENT MARKING (MICROSURFACING SURFACE) FOOT	SHORT TERM PAVEMENT MARKING REMOVAL (MILLED SURFACE) SQ FT	SHORT TERM PAVEMENT MARKING REMOVAL (MICROSURFACING SURFACE) SQ FT	TEMPORARY PAVEMENT MARKING - LINE 4" FOOT	TEMPORARY PAVEMENT MARKING - LINE 4" FOOT	TEMPORARY PAVEMENT MARKING - LINE 4" FOOT	TEMPORARY PAVEMENT MARKING - LINE 4" FOOT	PAINT PAVEMENT MARKING 4" FOOT	PAINT PAVEMENT MARKING 4" FOOT	PAINT PAVEMENT MARKING 4" FOOT	PAINT PAVEMENT MARKING 4" FOOT
										EDGE LINE	CL	EB NPZ	WB NPZ	EDGE LINE	CL	EB NPZ	WB NPZ
BEGINNING OF PROJECT	49+64.00	TO	49+82.00	0.2	0.2	3.2	3.2	1.08	1.08	36.0	4.5	0.0	0.0	36.0	4.5	0.0	0.0
	49+82.00	TO	55+09.00	6.6	6.6	94.9	94.9	31.62	31.62	1054.0	131.8	0.0	527.0	1054.0	131.8	0.0	527.0
	55+09.00	TO	65+00.00	12.4	12.4	178.4	178.4	59.46	59.46	1982.0	247.8	0.0	0.0	1982.0	247.8	0.0	0.0
	65+00.00	TO	65+48.71	0.6	0.6	8.8	8.8	2.92	2.92	97.4	12.2	0.0	0.0	97.4	12.2	0.0	0.0
STATION EQUATION	65+48.71	=	33+55.00														
	33+55.00	TO	49+15.50	19.5	19.5	280.9	280.9	93.63	93.63	3121.0	390.1	0.0	0.0	3121.0	390.1	0.0	0.0
BRIDGE 026-0105	49+15.50	TO	53+68.50	0.0	0.0	0.0	0.0	0.00	0.00	906.0	113.3	0.0	0.0	906.0	113.3	0.0	0.0
	53+68.50	TO	68+30.00	18.3	18.3	263.1	263.1	87.69	87.69	2923.0	365.4	0.0	0.0	2923.0	365.4	0.0	0.0
BRIDGE 026-0093	68+30.00	TO	69+64.00	0.0	0.0	0.0	0.0	0.00	0.00	268.0	33.5	0.0	0.0	268.0	33.5	0.0	0.0
	69+64.00	TO	83+86.00	17.8	17.8	256.0	256.0	85.32	85.32	2844.0	355.5	0.0	0.0	2844.0	355.5	0.0	0.0
BRIDGE 026-0094	83+86.00	TO	85+45.00	0.0	0.0	0.0	0.0	0.00	0.00	318.0	39.8	0.0	0.0	318.0	39.8	0.0	0.0
	85+45.00	TO	98+85.00	16.8	16.8	241.2	241.2	80.40	80.40	2680.0	335.0	0.0	0.0	2680.0	335.0	0.0	0.0
	98+85.00	TO	109+00.00	12.7	12.7	182.7	182.7	60.90	60.90	2030.0	253.8	1015.0	0.0	2030.0	253.8	1015.0	0.0
	109+00.00	TO	109+05.00	0.1	0.1	0.9	0.9	0.30	0.30	10.0	1.3	5.0	0.0	10.0	1.3	5.0	0.0
	109+05.00	TO	110+12.00	1.3	1.3	19.3	19.3	6.42	6.42	214.0	0.0	107.0	107.0	214.0	0.0	107.0	107.0
	110+12.00	TO	116+48.00	8.0	8.0	114.5	114.5	38.16	38.16	1272.0	159.0	0.0	636.0	1272.0	159.0	0.0	636.0
	116+48.00	TO	132+93.00	20.6	20.6	296.1	296.1	98.70	98.70	3290.0	411.3	0.0	0.0	3290.0	411.3	0.0	0.0
	132+93.00	TO	138+16.00	6.5	6.5	94.1	94.1	31.38	31.38	1046.0	130.8	523.0	0.0	1046.0	130.8	523.0	0.0
	138+16.00	TO	140+60.00	3.1	3.1	43.9	43.9	14.64	14.64	488.0	61.0	0.0	0.0	488.0	61.0	0.0	0.0
	140+60.00	TO	145+81.00	6.5	6.5	93.8	93.8	31.26	31.26	1042.0	130.3	0.0	521.0	1042.0	130.3	0.0	521.0
	145+81.00	TO	160+68.00	18.6	18.6	267.7	267.7	89.22	89.22	2974.0	371.8	0.0	0.0	2974.0	371.8	0.0	0.0
	160+68.00	TO	170+40.00	12.2	12.2	175.0	175.0	58.32	58.32	1944.0	243.0	972.0	0.0	1944.0	243.0	972.0	0.0
	170+40.00	TO	174+15.00	4.7	4.7	67.5	67.5	22.50	22.50	750.0	0.0	375.0	375.0	750.0	0.0	375.0	375.0
STATION EQUATION	174+15.00	=	0+00.00														
	0+00.00	TO	7+05.00	8.8	8.8	126.9	126.9	42.30	42.30	1410.0	0.0	705.0	705.0	1410.0	0.0	705.0	705.0
	7+05.00	TO	17+55.00	13.1	13.1	189.0	189.0	63.00	63.00	2100.0	262.5	0.0	1050.0	2100.0	262.5	0.0	1050.0
	17+55.00	TO	19+12.00	2.0	2.0	28.3	28.3	9.42	9.42	314.0	39.3	0.0	0.0	314.0	39.3	0.0	0.0
	19+12.00	TO	30+32.00	14.0	14.0	201.6	201.6	67.20	67.20	2240.0	280.0	1120.0	0.0	2240.0	280.0	1120.0	0.0
	30+32.00	TO	33+77.00	4.3	4.3	62.1	62.1	20.70	20.70	690.0	0.0	345.0	345.0	690.0	0.0	345.0	345.0
STATION EQUATION	33+77.00	=	102+92.10														
	102+92.10	TO	107+04.00	5.1	5.1	74.1	74.1	24.71	24.71	823.8	0.0	411.9	411.9	823.8	0.0	411.9	411.9
	107+04.00	TO	119+32.00	15.4	15.4	221.0	221.0	73.68	73.68	2456.0	0.0	1228.0	1228.0	2456.0	0.0	1228.0	1228.0
STATION EQUATION	119+32.00	=	119+34.57														
	119+34.57	TO	120+94.00	2.0	2.0	28.7	28.7	9.57	9.57	318.9	0.0	159.4	159.4	318.9	0.0	159.4	159.4
STATION EQUATION	120+94.00	=	119+99.41														
	119+99.41	TO	141+32.00	26.7	26.7	383.9	383.9	127.96	127.96	4265.2	0.0	2132.6	2132.6	4265.2	0.0	2132.6	2132.6
	141+32.00	TO	144+90.00	4.5	4.5	64.4	64.4	21.48	21.48	716.0	0.0	358.0	358.0	716.0	0.0	358.0	358.0
	144+90.00	TO	148+08.00	4.0	4.0	57.2	57.2	19.08	19.08	636.0	0.0	318.0	318.0	636.0	0.0	318.0	318.0
BRIDGE 026-0049	148+08.00	TO	151+77.00	4.6	4.6	66.4	66.4	22.14	22.14	738.0	0.0	369.0	369.0	738.0	0.0	369.0	369.0
	151+77.00	TO	154+61.00	3.6	3.6	51.1	51.1	17.04	17.04	568.0	0.0	284.0	284.0	568.0	0.0	284.0	284.0
	154+61.00	TO	158+64.00	5.0	5.0	72.5	72.5	24.18	24.18	806.0	0.0	403.0	403.0	806.0	0.0	403.0	403.0
	158+64.00	TO	162+95.00	5.4	5.4	77.6	77.6	25.86	25.86	862.0	0.0	431.0	431.0	862.0	0.0	431.0	431.0
	SUB-TOTAL			305	305	4387	4387	1462	1462	50233	4372	11262	10361	50233	4372	11261.9	10360.9
	TOTALS			305	305	8772		2924		76229				76229			

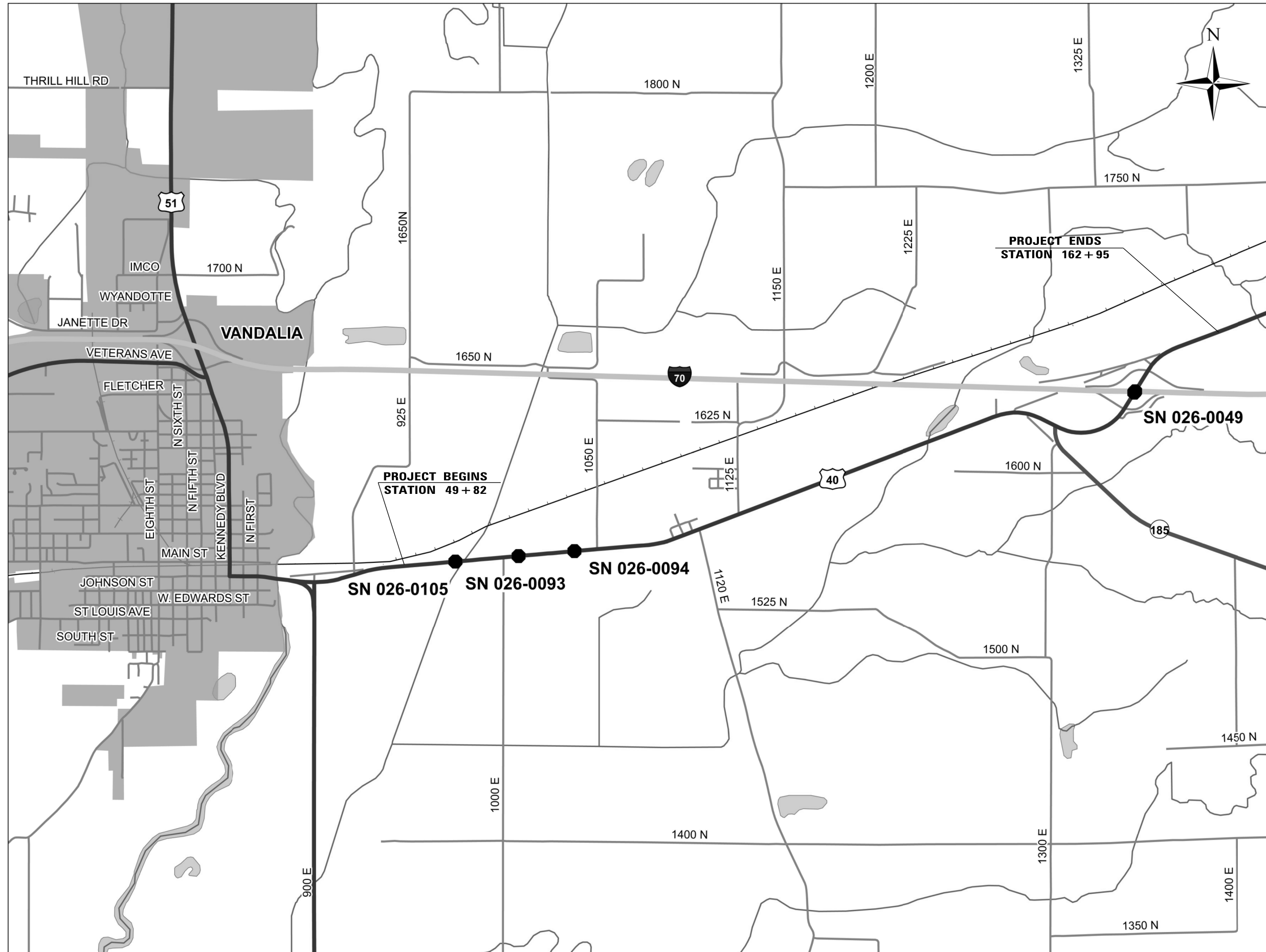
MODEL: Default  
 FILE: h:\m\c\_p\pub\barroom.dwg  
 PROJECT: 74954\CAAD\barroom.dwg  
 OFFICE: D:\dot\Documents\DOT - Office\11\dot\74954\pmschedule.dwg

USER NAME = stefenmk	DESIGNED -	REvised -
	DRAWN -	REvised -
PLOT SCALE = 40.0000 ' / in.	CHECKED -	REvised -
PLOT DATE = 1/15/2020	DATE -	REvised -

**STATE OF ILLINOIS  
 DEPARTMENT OF TRANSPORTATION**

<b>PAVEMENT MARKING SCHEDULE</b>			
SCALE:	SHEET	OF SHEETS	STA. TO STA.

F.A.P. RTE.	SECTION	COUNTY	TOTAL SHEETS	SHEET NO.
752	(23-3)(W.V) PVMT PRSV	FAYETTE	7	6
CONTRACT NO. 74954				
ILLINOIS		FED. AID PROJECT		



STATION EQUATIONS	
STA 65 + 48.71 BK =	STA 33 + 55.00 AH
STA 174 + 15.40 BK =	STA 0 + 00.00 AH
STA 33 + 77.00 BK =	STA 102 + 92.10 AH
STA 119 + 32.10 BK =	STA 119 + 34.57 AH
STA 120 + 94.05 BK =	STA 119 + 99.41 AH

BRIDGE OMISSIONS			
STATION	TO	STATION	STRUCTURE #
49 + 15.50	TO	53 + 68.50	026-0105
68 + 30.00	TO	69 + 64.00	026-0093
83 + 86.00	TO	85 + 45.00	026-0094

MODEL: Default  
 FILE: \\nlsr01\pub\baronon.dwg  
 PROJECT: 74954\CAD\DATA\CAD\Drawings\DOT - Offices\Drawings\74954\Sheet\plan.dwg

USER NAME =	steffenmk	DESIGNED -	REVISD -
		DRAWN -	REVISD -
PLOT SCALE =	40,0000 ' / in.	CHECKED -	REVISD -
PLOT DATE =	1/15/2020	DATE -	REVISD -

**STATE OF ILLINOIS**  
**DEPARTMENT OF TRANSPORTATION**

**PLAN SHEET**

SCALE: SHEET OF SHEETS STA. TO STA.

F.A. RTE.	SECTION	COUNTY	TOTAL SHEETS	SHEET NO.
752	(23-2)(W,V) PVMT PRSV	FAYETTE	7	7
CONTRACT NO. 74954				
ILLINOIS FED. AID PROJECT				