

075

STATE OF ILLINOIS
DEPARTMENT OF TRANSPORTATION

FAP RTE	SECTION	COUNTY	TOTAL SHEETS	SHEET NO
322A	158-20/PVMT PRSV	MACON	13	1
		ILLINOIS	CONTRACT NO 74955	

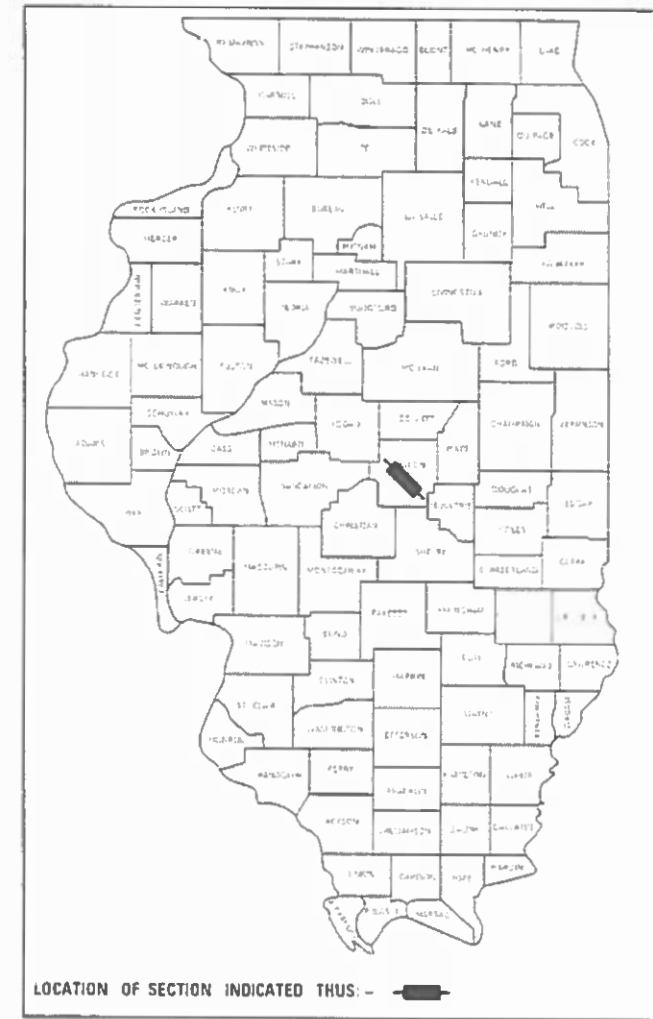
FOR INDEX OF SHEETS, SEE SHEET NO. 2

PROPOSED HIGHWAY PLANS

FAP ROUTE 322A (US 51)
SECTION (58-20) PVMT PRSV
PROJECT NHPP-AICK(456)
MICROSURFACING SINGLE PASS
MACON COUNTY

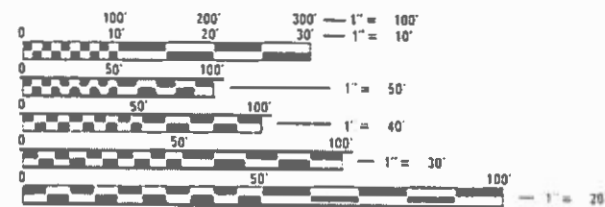
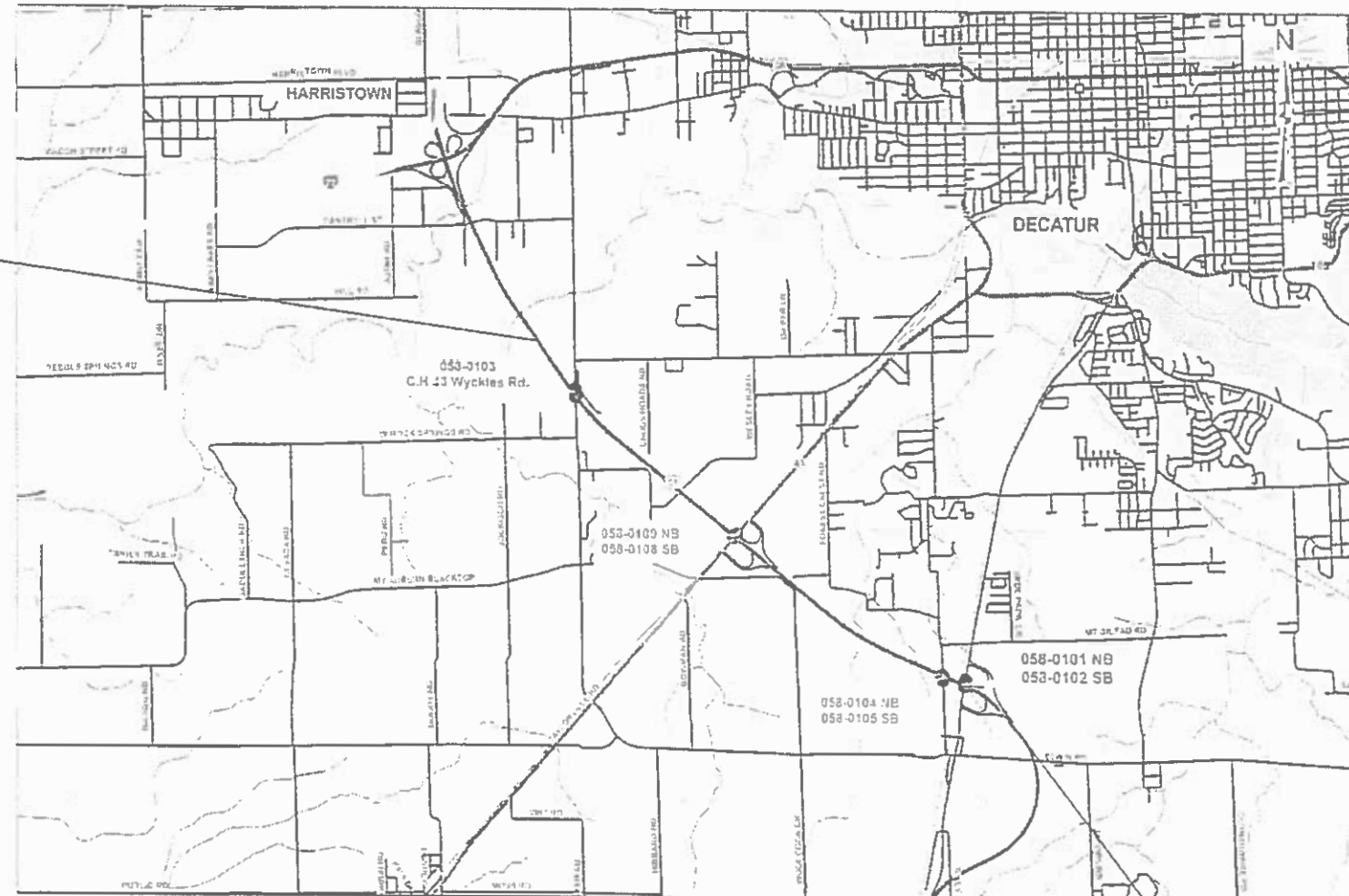
C-97-032-20

D-97-031-20



BRIDGE OMISSIONS			
STRUCTURE#	STATION	TO	STATION
058-0101 NB	132+13.05	TO	135+75.47
058-0102 SB	132+13.05	TO	135+75.47
058-0104 NB	141+84.12	TO	143+20.27
058-0105 SB	141+85.12	TO	143+21.27
058-0108 SB	232+76.17	TO	236+22.50
058-0109 NB	232+76.17	TO	236+22.50

PROJECT ENDS
STATION 367 + 40



FULL SIZE PLANS HAVE BEEN PREPARED USING STANDARD ENGINEERING SCALES. REDUCED SIZED PLANS WILL NOT CONFORM TO STANDARD SCALES. IN MAKING MEASUREMENTS ON REDUCED PLANS, THE ABOVE SCALES MAY BE USED.

J.U.L.I.E.
JOINT UTILITY LOCATION INFORMATION FOR EXCAVATORS
1-800-892-0123
OR 811

PROJECT ENGINEER: BRIAN LEWIS
PROJECT MANAGER: MYRA OLTMAN

CONTRACT NO. 74955

GROSS LENGTH = 24,852.51 FT. = 4.68 MILE
NET LENGTH = 23,273.6 FT. = 4.41 MILE

PROJECT BEGINS
STATION 120 + 51.89

STATE OF ILLINOIS
DEPARTMENT OF TRANSPORTATION

SUBMITTED FEBRUARY 5, 2020
Jeffrey P. Mynick
REGIONAL ENGINEER

MARCH 20, 2020
[Signature]
ENGINEER OF DESIGN AND ENVIRONMENT

MARCH 20, 2020
[Signature]
DIRECTOR OF HIGHWAYS PROJECT IMPLEMENTATION

PRINTED BY THE AUTHORITY
OF THE STATE OF ILLINOIS

URBAN
80% FED 20% STATE

URBAN
80% FED 20% STATE

SUMMARY OF QUANTITIES			TOTAL QUANTITIES	CONSTRUCTION TYPE CODE		
CODE NO	ITEM	UNIT		0005		
40400118	MICRO-SURFACING, SINGLE PASS	SO YD	161384	161384		
40600290	BITUMINOUS MATERIALS (TACK COAT)	POUND	35338	35338		
67100100	MOBILIZATION	L SUM	1	1		
70100310	TRAFFIC CONTROL AND PROTECTION, STANDARD 701421	L SUM	1	1		
70100700	TRAFFIC CONTROL AND PROTECTION, STANDARD 701406	L SUM	1	1		
70100820	TRAFFIC CONTROL AND PROTECTION, STANDARD 701451	L SUM	1	1		
70100825	TRAFFIC CONTROL AND PROTECTION, STANDARD 701456	L SUM	1	1		
70107025	CHANGEABLE MESSAGE SIGN	CAL DA	28	28		
70300100	SHORT TERM PAVEMENT MARKING	FOOT	10496	10496		
70300150	SHORT TERM PAVEMENT MARKING REMOVAL	SO FT	5248	5248		
* 78000100	THERMOPLASTIC PAVEMENT MARKING - LETTERS AND SYMBOLS	SO FT	125	125		
* 78000400	THERMOPLASTIC PAVEMENT MARKING - LINE 6"	FOOT	138864	138864		

SUMMARY OF QUANTITIES			TOTAL QUANTITIES	CONSTRUCTION TYPE CODE		
CODE NO	ITEM	UNIT		0005		
78000500	THERMOPLASTIC PAVEMENT MARKING - LINE 8"	FOOT	3726	3726		
78000600	THERMOPLASTIC PAVEMENT MARKING - LINE 12"	FOOT	224	224		
78000650	THERMOPLASTIC PAVEMENT MARKING - LINE 24"	FOOT	144	144		
78100100	RAISED REFLECTIVE PAVEMENT MARKER	EACH	1469	1469		
78300200	RAISED REFLECTIVE PAVEMENT MARKER REMOVAL	EACH	1469	1469		
X0327980	PAVEMENT MARKING REMOVAL - WATER BLASTING	SO FT	55042	55042		
Z0033650	LONGITUDINAL JOINT REPAIR	TON	2	2		

* SPECIALTY ITEM

MODEL: Default
FILE: \\bls01\pub\baronon.dwg
PROJECT: 74955\CAAD\Drawings\DOT\Documents\DOT\Office\Drawings\74955\Site\SOQ.dgn

USER NAME = steffenmk	DESIGNED -	REVISED -
PLOT SCALE = 100.0000' / in.	DRAWN -	REVISED -
PLOT DATE = 2/10/2020	CHECKED -	REVISED -
	DATE -	REVISED -

STATE OF ILLINOIS
DEPARTMENT OF TRANSPORTATION

SUMMARY OF QUANTITIES

SCALE: SHEET OF SHEETS STA. TO STA.

F.A.P. RTE.	SECTION	COUNTY	TOTAL SHEETS	SHEET NO.
322A	(58-20) PVMT PRSV	MACON	13	3
ILLINOIS FED. AID PROJECT			CONTRACT NO. 74955	

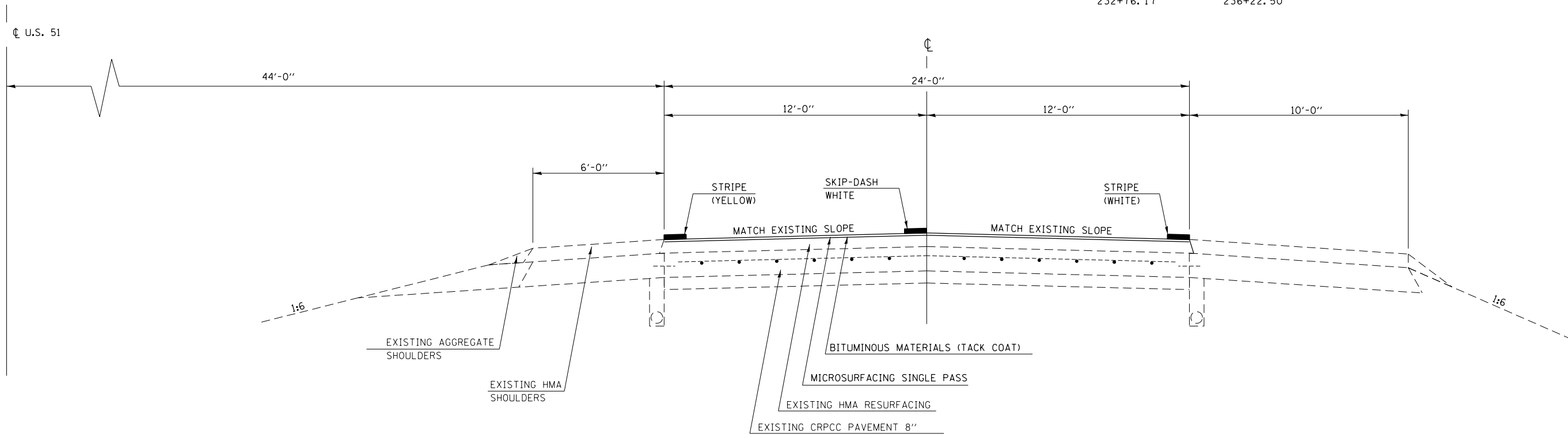
PROPOSED TYPICAL CROSS SECTION

F.A.P. 322

STATION	TO	STATION
120+51.89		367+40.00

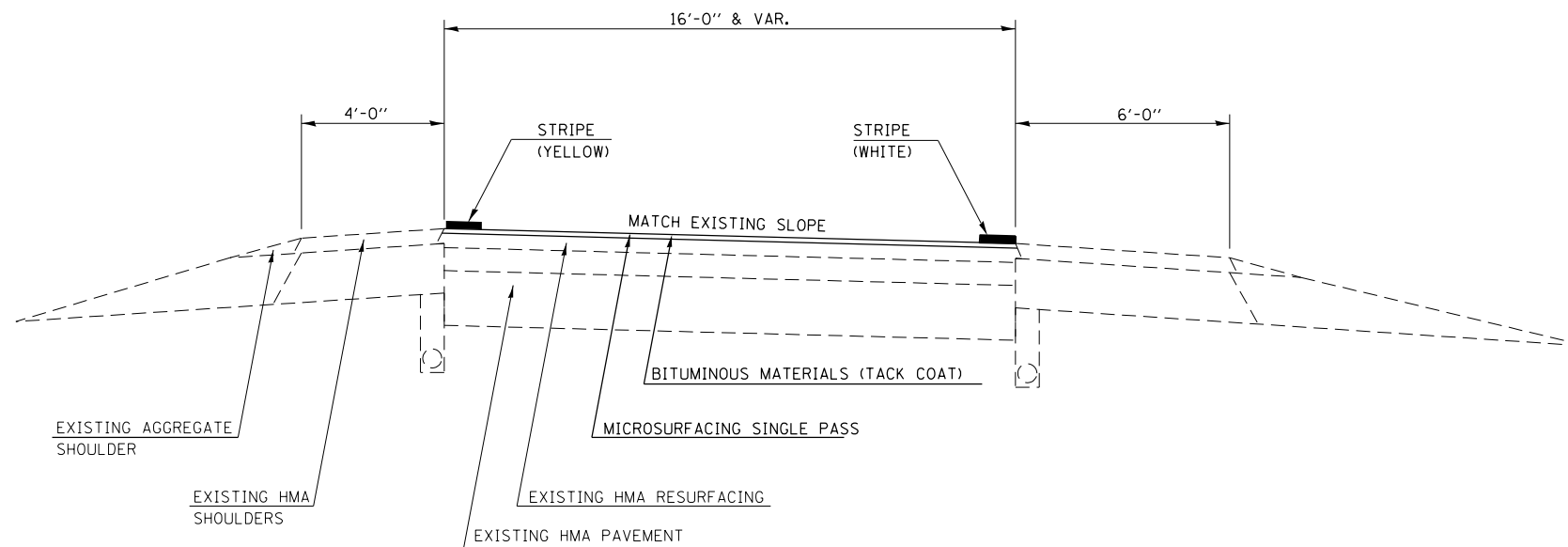
BRIDGE OMISSION

STATION	TO	STATION
132+49.30		135+39.34
141+84.12		143+20.27
232+76.17		236+22.50



PROPOSED RAMP TYPICAL CROSS SECTION

RAMPS A, B, C & D (U.S. 51 / U.S. (BUS.) 51)
 RAMPS A, B, C & D (U.S. 51 / IL. 48)



MODEL: Default
 FILE: \\nashville.pw.gov\pub\harron\ada\illinois.gov\PWIDOT\Documents\DOT_Offices\District_7\Projects\74955\CADD\Drawings\74955-shct\typical.dgn

USER NAME = steffemk	DESIGNED -	REVISED -
	DRAWN -	REVISED -
PLOT SCALE = 40.0000' / in.	CHECKED -	REVISED -
PLOT DATE = 2/10/2020	DATE -	REVISED -

**STATE OF ILLINOIS
 DEPARTMENT OF TRANSPORTATION**

TYPICAL SECTIONS

SCALE: SHEET OF SHEETS STA. TO STA.

F.A.P. RTE.	SECTION	COUNTY	TOTAL SHEETS	SHEET NO.
322A	((58-20)PVMT PRSV	MACON	13	4
CONTRACT NO. 74955				
ILLINOIS FED. AID PROJECT				

MODEL: Default
 FILE: h:\m\c\p\pub\barroom.dwg
 PROJECT: 74955\CAD\DATA\CAD\sheet\074955-prs-schedule.dgn

PAVEMENT PRESERVATION SCHEDULE MAINLINE							
STATION	TO	STATION	FOOT	FOOT	POUND	SQ YD	TON
US 51 MAINLINE							
120+51.89	TO	127+11.51	659.6	48.0	792	3,518.0	0.030
127+11.51	TO	129+45.54	234.0	48.0	281	1,248.2	0.010
129+45.54	TO	130+63.26	117.7	48.0	142	627.8	0.010
130+63.26	TO	131+06.04	42.8	48.0	52	228.2	0.000
131+06.04	TO	131+50.00	44.0	48.0	53	234.5	0.000
131+50.00	TO	132+18.54	68.5	48.0	83	365.5	0.000
132+18.54	TO	135+69.84	351.3	48.0	0	0.0	0.000
135+69.84	TO	136+82.34	112.5	48.0	135	600.0	0.010
136+82.34	TO	140+71.07	388.7	48.0	467	2,073.2	0.020
140+71.07	TO	141+83.57	112.5	48.0	135	600.0	0.010
141+83.57	TO	143+20.82	137.3	48.0	0	0.0	0.000
143+20.82	TO	144+33.32	112.5	48.0	135	600.0	0.010
144+33.32	TO	162+35.00	1,765.7	48.0	2,119	9,417.0	0.080
162+35.00	TO	204+67.14	4,232.1	48.0	5,079	22,571.4	0.190
204+67.14	TO	212+17.27	750.1	48.0	901	4,000.7	0.030
212+17.27	TO	212+38.70	21.4	48.0	26	114.3	0.000
212+38.70	TO	215+59.71	321.0	48.0	386	1,712.1	0.010
215+59.71	TO	216+49.66	90.0	48.0	108	479.7	0.000
216+49.66	TO	219+00.03	250.4	48.0	301	1,335.3	0.010
219+00.03	TO	227+92.37	892.3	48.0	1,071	4,759.1	0.040
227+92.37	TO	229+67.39	175.0	48.0	211	933.4	0.010
229+67.39	TO	231+33.02	165.6	48.0	199	883.4	0.010
231+33.02	TO	231+69.78	36.8	48.0	45	196.1	0.000
231+69.78	TO	231+95.62	25.8	48.0	32	137.8	0.000
231+95.62	TO	232+81.67	86.0	48.0	104	458.9	0.000
232+81.67	TO	236+17.01	335.3	48.0	0	0.0	0.000
236+17.01	TO	237+29.51	112.5	48.0	135	600.0	0.010
237+29.51	TO	241+49.81	420.3	0.0	505	2,241.6	0.020
241+49.81	TO	268+70.00	2,720.2	48.0	3,265	14,507.7	0.120
268+70.00	TO	331+45.00	6,275.0	48.0	7,530	33,466.7	0.280
331+45.00	TO	341+54.50	1,009.5	48.0	1,212	5,384.0	0.040
341+54.50	TO	342+67.00	112.5	48.0	135	600.0	0.010
342+67.00	TO	350+22.00	755.0	48.0	0	4,026.7	0.030
350+22.00	TO	351+34.50	112.5	48.0	135	600.0	0.010
351+34.50	TO	367+40.00	1,605.5	48.0	1,927	8,562.7	0.070
US ROUTE 51 TOTALS			24,653		27,701	127,084	1.07

PAVEMENT PRESERVATION SCHEDULE ILL ROUTE 48 RAMPS							
STATION	TO	STATION	FOOT	FOOT	POUND	SQ YD	TON
RAMP A IL 48							
300+35.00	TO	301+10.00	75.0	VAR.	71.0	314.4	
301+10.00	TO	301+38.47	28.5	VAR.	12.0	53.0	
301+38.47	TO	320+98.54	1960.1	16.0	785.0	3484.6	
320+98.54	TO	325+28.35	429.8	16.0	172.0	764.1	
325+28.35	TO	332+78.35	750.0	Variable	160.0	708.5	
RAMP B IL 48							
401+69.68	TO	402+83.44	113.8	VAR.	4.0	156.6	0.01
402+83.44	TO	403+22.46	39.0	VAR.	2.0	73.6	0.00
403+22.46	TO	406+62.40	339.9	16.0	136.0	604.3	0.02
406+62.40	TO	423+94.12	1731.7	16.0	693.0	3078.6	0.05
423+94.12	TO	424+26.78	32.7	VAR.	14.0	61.7	
424+26.78	TO	425+01.78	75.0	VAR.	79.0	350.7	
RAMP C IL 48							
500+35.00	TO	501+10.00	75.0	VAR.	71.0	314.2	
501+10.00	TO	501+38.47	28.5	VAR.	12.0	53.0	
501+38.47	TO	513+15.85	1177.4	16.0	471.0	2093.1	
501+38.47	TO	515+12.69	1374.2	16.0	550.0	2443.1	
515+12.69	TO	516+23.68	111.0	VAR.	48.0	210.4	
516+23.68	TO	519+59.42	335.7	VAR.	0.0	0.0	
519+59.42	TO	524+96.33	536.9	VAR.	86.0	380.2	
RAMP D IL 48							
599+81.00	TO	603+21.61	340.6	VAR.	9.0	341.5	0.01
603+21.61	TO	606+62.40	340.8	16.0	137.0	605.8	0.02
606+62.40	TO	622+50.78	1588.4	16.0	636.0	2823.8	0.07
622+50.78	TO	622+85.52	34.7	VAR.	14.0	0.0	
622+85.52	TO	623+60.52	75.0	VAR.	82.0	363.6	
TOTAL IL 48 RAMPS			11,593.7		4,244	19,279	0.18

PAVEMENT PRESERVATION SCHEDULE US ROUTE 51 RAMPS							
STATION	TO	STATION	FOOT	FOOT	POUND	SQ YD	TON
RAMP A US (BUS) 51							
200+38.53	TO	201+13.53	75.0	VAR.	83.0	365.3	
201+13.53	TO	201+57.02	43.5	VAR.	20.0	85.9	
201+57.02	TO	215+79.76	1422.7	16.0	570.0	2,529.3	
215+79.76	TO	216+80.00	100.2	16.0	41.0	178.2	
RAMP B US (BUS) 51							
301+85.81	TO	303+05.85	120.04	VAR.	81.0	359.4	0.01
303+05.85	TO	303+22.35	16.50	VAR.	8.0	33.0	0.00
303+22.35	TO	306+62.39	340.04	16.00	137.0	604.5	0.02
306+62.39	TO	316+55.93	993.54	16.00	398.0	1766.3	0.04
316+55.93	TO	320+79.65	423.72	16.00	170.0	753.3	
320+79.65	TO	321+11.38	31.73	VAR.	15.0	62.7	
321+11.38	TO	321+86.38	75.00	VAR.	88.0	386.7	
RAMP C US (BUS) 51							
700+36.24	TO	701+11.24	75.00	VAR.	80.0	351.7	
701+11.24	TO	701+51.09	39.85	VAR.	18.0	77.4	
701+51.09	TO	706+00.00	448.91	16.00	180.0	798.1	
706+00.00	TO	715+34.74	934.74	16.00	374.0	1661.8	
715+34.74	TO	717+17.96	183.22	16.00	74.0	325.7	
717+17.96	TO	718+30.00	112.04	VAR.	47.0	207.9	
718+30.00	TO	721+79.87	349.87	VAR.	0.0	0.0	
721+79.87	TO	727+42.81	562.94	VAR.	81.0	356.3	
RAMP D US (BUS) 51							
904+60.00	TO	923+46.16	1886.16	16.00	827.0	3671.8	0.09
923+46.16	TO	923+72.45	26.29	VAR.	11.0	48.9	
923+72.45	TO	924+47.45	75.00	VAR.	90.0	396.8	
TOTAL (BUS 51 RAMPS)			8,336.1		3,393.0	15,020.9	0.16

PAVEMENT PRESERVATION SCHEDULE TOTALS			
	BITUMINOUS MATERIALS (TACK COAT)	MICROSURFACING SINGLE PASS	LONGITUDINAL JOINT REPAIR
	POUND	SQ YD	TON
US ROUTE 51 MAINLINE	27,701	127,084	1.07
US ROUTE 51 RAMPS	3,393.0	15,021	0.15
IL ROUTE 48 RAMPS	4,244.0	19,279	0.18
PROJECT TOTAL	35,338	161,384	2.0*

*ROUNDED UP

USER NAME = stefenmk	DESIGNED -	REVISED -
	DRAWN -	REVISED -
PLOT SCALE = 40.0000 ' / in.	CHECKED -	REVISED -
PLOT DATE = 2/10/2020	DATE -	REVISED -

STATE OF ILLINOIS
DEPARTMENT OF TRANSPORTATION

PAVEMENT PRESERVATION SCHEDULE

SCALE: SHEET OF SHEETS STA. TO STA.

F.A.P. RTE.	SECTION	COUNTY	TOTAL SHEETS	SHEET NO.
322A	(58-20) PVMT PRSV	MACON	13	5
CONTRACT NO. 74955				
ILLINOIS FED. AID PROJECT				

MODEL: Default
 FILE: h:\mfc_p\pub\haronom.dwg
 PROJECT: 74955\CAAD\Drawings\DOT_Offices\Drawings\74955-IL-SC-Schedule.dgn

PAVEMENT MARKING SCHEDULE

		STATION	LENGTH FOOT	PAVEMENT MARKING REMOVAL - WATER BLASTING SQ FT	SHORT-TERM PAVEMENT MARKING FOOT	SHORT TERM PAVEMENT MARKING REMOVAL SQ FT	THERMOPLASTIC PAVEMENT MARKING-LINE 6" FOOT	THERMOPLASTIC PAVEMENT MARKING - LINE 8" FOOT	THERMOPLASTIC PAVEMENT MARKING - LINE 12" FOOT	THERMOPLASTIC PAVEMENT MARKING - LINE 24" FOOT		RAISED REFLECTIVE PAVEMENT MARKER EACH	RAISED REFLECTIVE PAVEMENT MARKER REMOVAL EACH
RAMP A IL 48													
	300+35.00	TO 301+10.00	75.0	125.0	6	3	218						
	301+10.00	TO 301+38.47	28.5	47.5	2	1	57						
	301+38.47	TO 320+49.57	1,911.1	3,185.2	153	76	3817						
	320+49.57	TO 321+68.30	118.7	237.5	9	5	119	119					
	321+68.30	TO 326+28.49	460.2	613.6	37	18	460						
	326+28.49	TO 332+78.35	649.9	866.5	52	26	650						
RAMP B IL 48													
	400+00.00	TO 401+69.69	169.7	226.3	14	7	170					9	9
	401+69.69	TO 402+77.13	107.4	143.3	9	4	107					8	8
	402+77.13	TO 407+11.37	434.2	868.5	35	17	434	434				46	46
	407+11.37	TO 417+62.95	1,051.6	1,752.6	84	42	2103					27	27
	417+62.95	TO 423+94.12	631.2	1,052.0	50	25	1262						
	423+94.12	TO 424+26.78	32.7	54.4	3	1	65						
	424+26.78	TO 425+01.78	75.0	367.2	6	3	150	150	75	36	31.2		
RAMP C IL 48													
	500+35.00	TO 501+10.00	75.0	125.0	6	3	217						
	501+10.00	TO 501+38.47	28.5	47.5	2	1	57						
	501+38.47	TO 504+03.76	265.3	442.2	21	11	531						
	504+03.76	TO 512+66.88	863.1	1,438.5	69	35	1726						
	512+66.88	TO 513+84.34	117.5	195.8	9	5	117	117					
	513+84.34	TO 518+47.38	463.0	463.0	37	19	463						
	518+47.38	TO 524+96.33	649.0	649.0	52	26	649						
RAMP D IL 48													
	599+81.00	TO 602+77.06	296.1	394.7	24	12	296					17	17
	602+77.06	TO 607+11.37	434.3	868.6	35	17	434	434				46	46
	607+11.37	TO 622+50.78	1,539.4	2,565.7	123	62	3079					16	16
	622+50.78	TO 622+85.52	34.7	57.9	3	1	69						
	622+85.52	TO 623+60.52	75.0	367.2	6	3	225	150	75	36	31.2		
IL 48 RAMP TOTALS			7,343	17,154	847	423	17,477	1,405	150	72	62.4	169	169
US 51 RAMP TOTALS			6,830	14,947	678	349	16,351	814	150	72	62.4	135	135
US 51 MAINLINE TOTALS			24,688	40,095	8,888	4,444	104,491	1,319	0	0	0.0	1,165	1,165
PROJECT TOTALS			38,861	72,197	10,413	5,216	138,318	3,538	300	144	125	1,469	1,469

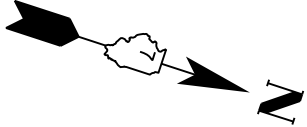
USER NAME = steffenmk	DESIGNED -	REVISED -
	DRAWN -	REVISED -
PLOT SCALE = 40.0000 ' / in.	CHECKED -	REVISED -
PLOT DATE = 2/10/2020	DATE -	REVISED -

STATE OF ILLINOIS
 DEPARTMENT OF TRANSPORTATION

PAVEMENT MARKING SCHEDULE
 SHEET 2 OF 2

SCALE: SHEET OF SHEETS STA. TO STA.

F.A.P RTE.	SECTION	COUNTY	TOTAL SHEETS	SHEET NO.
322A	(58-20) PVMT PRSV	MACON	13	7
CONTRACT NO. 74955			ILLINOIS FED. AID PROJECT	



SN 058-0104 & SN 058-0105
BRIDGE OMISSION
STA. 141+84.12 TO STA 143+20.27

STA 322+22.92 (⊕ RAMP B) =
STA 512+37.73 (⊕ BUS 51)

STA 200+01.82 (⊕ RAMP A) =
STA 511+41.49 (⊕ BUS 51)

PC STA 302+88.67 (⊕ RAMP B) =
PT STA 130+98.79, 84.24' LT (US 51)

STA 300+00.00 (⊕ RAMP B) =
STA 133+87.06, 69' LT (US 51)

STA 142+55.53 (US 51) =
STA 599+98.87 (T.R. 114 A)

PCC STA 306+62.39 (⊕ RAMP B) =
STA 127+12.91, 103.97' LT (US 51)

STA 726+92.82 (⊕ RAMP C) =
STA 140+99.81, 69' RT (US 51)

**PROJECT BEGINS
STATION 120 + 51.89**

SN 058-0101 & SN 058-0102
BRIDGE OMISSION
STA. 132+13.05 TO STA 135+75.47

RAMP A BEGINS
STATION 216+80

STA 700+00.00 (⊕ RAMP C) =
STA 527+49.26 (BUS 51)

STA 924+84.55 (⊕ RAMP D) =
STA 528+44.51 (BUS 51)

RAMP D BEGINS
STATION 904+60

PT STA 716+42.82 (⊕ RAMP C) =
STA 130+51.51, 90.4' RT (US 51)

STA 133+62.02 (US 51) =
STA 519+95.03 (BUS 51)

MODEL: Default
 FILE: h:\mfc_2010\pub\harcross.dwg
 PROJECT: 74955\CADD\DATA\CAD\harcross.dwg
 OFFICE: 74955\CADD\DATA\CAD\harcross.dwg
 DATE: 2/10/2020

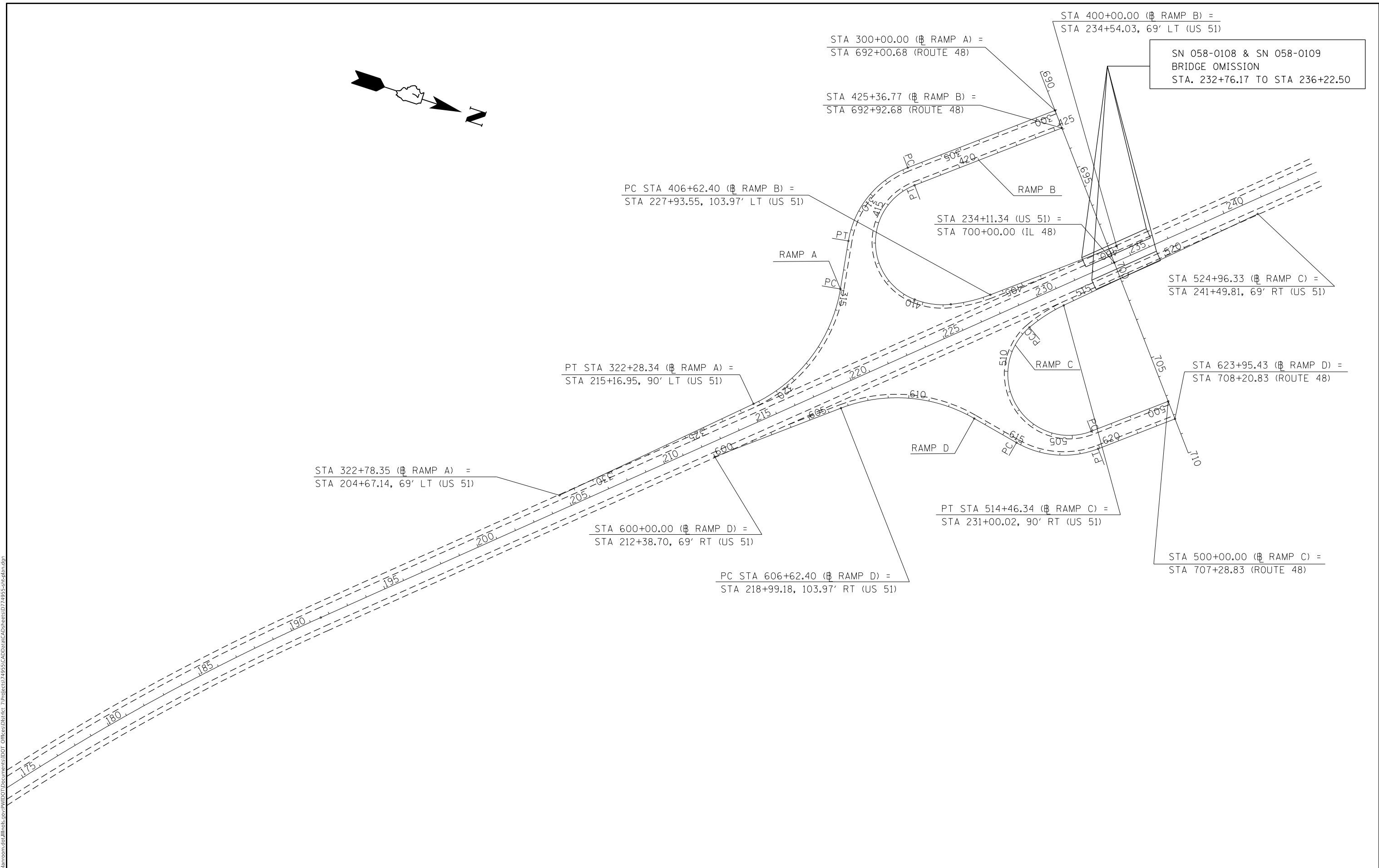
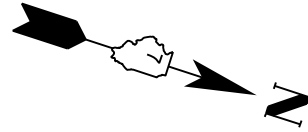
USER NAME = steffenk	DESIGNED -	REVISED -
DRAWN -	REVISED -	
PLOT SCALE = 20.0000' / in.	CHECKED -	REVISED -
PLOT DATE = 2/10/2020	DATE -	REVISED -

**STATE OF ILLINOIS
DEPARTMENT OF TRANSPORTATION**

PLAN SHEET

SCALE: SHEET OF SHEETS STA. TO STA.

F.A.P. RTE.	SECTION	COUNTY	TOTAL SHEETS	SHEET NO.
322A	(58-20)PVMT PRSV	MACON	13	8
ILLINOIS FED. AID PROJECT			CONTRACT NO. 74955	



SN 058-0108 & SN 058-0109
BRIDGE OMISSION
STA. 232+76.17 TO STA 236+22.50

STA 300+00.00 (RAMP A) =
STA 692+00.68 (ROUTE 48)

STA 425+36.77 (RAMP B) =
STA 692+92.68 (ROUTE 48)

STA 400+00.00 (RAMP B) =
STA 234+54.03, 69' LT (US 51)

PC STA 406+62.40 (RAMP B) =
STA 227+93.55, 103.97' LT (US 51)

STA 234+11.34 (US 51) =
STA 700+00.00 (IL 48)

STA 524+96.33 (RAMP C) =
STA 241+49.81, 69' RT (US 51)

PT STA 322+28.34 (RAMP A) =
STA 215+16.95, 90' LT (US 51)

STA 623+95.43 (RAMP D) =
STA 708+20.83 (ROUTE 48)

STA 322+78.35 (RAMP A) =
STA 204+67.14, 69' LT (US 51)

STA 600+00.00 (RAMP D) =
STA 212+38.70, 69' RT (US 51)

PT STA 514+46.34 (RAMP C) =
STA 231+00.02, 90' RT (US 51)

PC STA 606+62.40 (RAMP D) =
STA 218+99.18, 103.97' RT (US 51)

STA 500+00.00 (RAMP C) =
STA 707+28.83 (ROUTE 48)

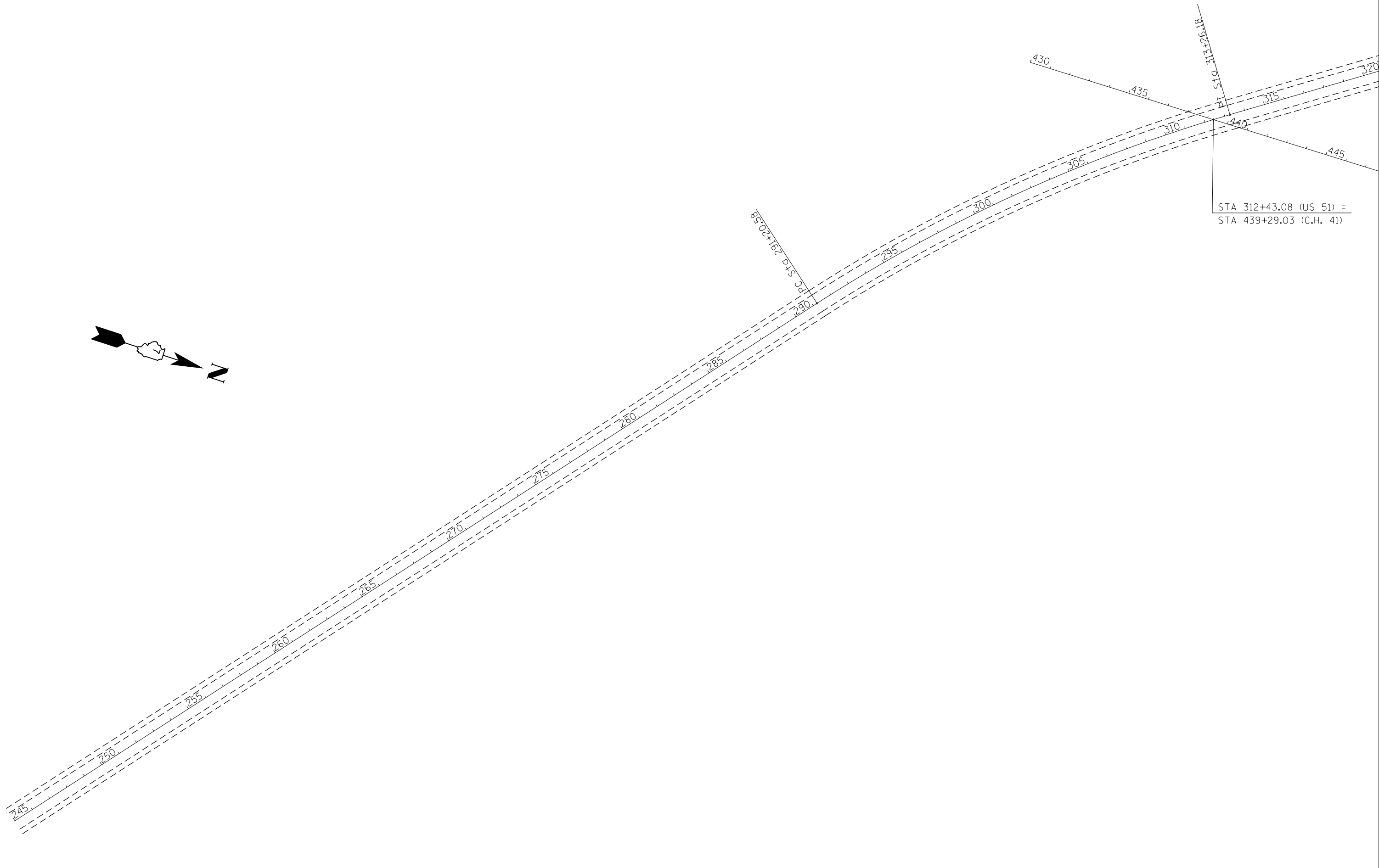
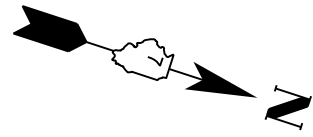
MODEL: Default
 FILE: h:\mfc_p\pub\harcross.dwg
 PROJECT: 74955\CADD\Drawings\DOT_Offices\Drawings\74955-std\plan.dgn

USER NAME = steffemk	DESIGNED -	REVISED -
DRAWN -	REVISED -	
PLOT SCALE = 20.0000' / in.	CHECKED -	REVISED -
PLOT DATE = 2/10/2020	DATE -	REVISED -

**STATE OF ILLINOIS
DEPARTMENT OF TRANSPORTATION**

PLAN SHEET			
SCALE:	SHEET	OF	SHEETS
	STA.	TO	STA.

F.A.P. RTE.	SECTION	COUNTY	TOTAL SHEETS	SHEET NO.
322A	(58-20)PVMT PRSV	MACON	13	9
CONTRACT NO. 74955				
ILLINOIS FED. AID PROJECT				



STA 312+43.08 (US 51) =
STA 439+29.03 (C.H. 41)

MODEL: Default
FILE: h:\mfc_p\pub\harcourm.dwg
C:\ProgramData\Autodesk\LT2015\CADData\CAD\shc\shc.dgn
7:Project\74955\CADData\CAD\shc\shc.dgn

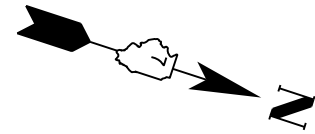
USER NAME = steffenmk	DESIGNED -	REVISED -
	DRAWN -	REVISED -
PLOT SCALE = 20.0000 ' / in.	CHECKED -	REVISED -
PLOT DATE = 2/10/2020	DATE -	REVISED -

**STATE OF ILLINOIS
DEPARTMENT OF TRANSPORTATION**

PLAN SHEET

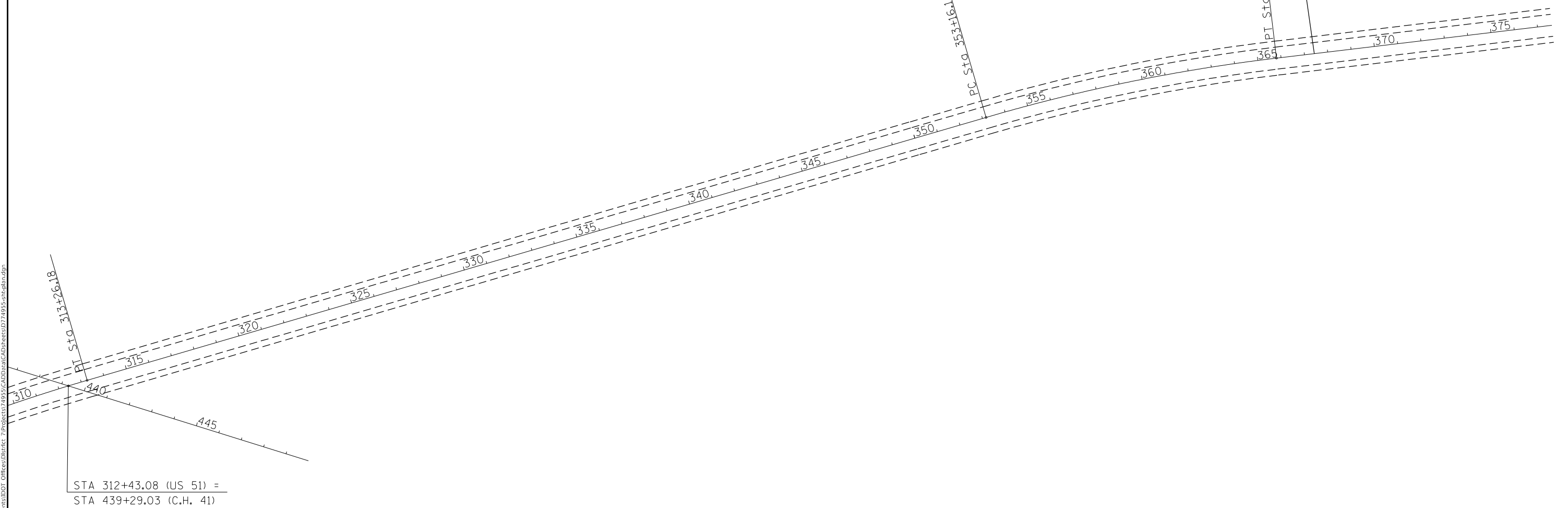
SCALE: SHEET OF SHEETS STA. TO STA.

F.A.P. RTE.	SECTION	COUNTY	TOTAL SHEETS	SHEET NO.
322A	(58-20)PVMT PRSV	MACON	13	10
CONTRACT NO. 74955			ILLINOIS FED. AID PROJECT	



**PROJECT ENDS
STATION 367 + 40**

MODEL: Default
 FILE: h:\mfc_p\pub\harcross.dwg
 PROJECT: 74955\CAD\Drawings\DOT_Offices\Drawings\74955-11c\plan.dgn

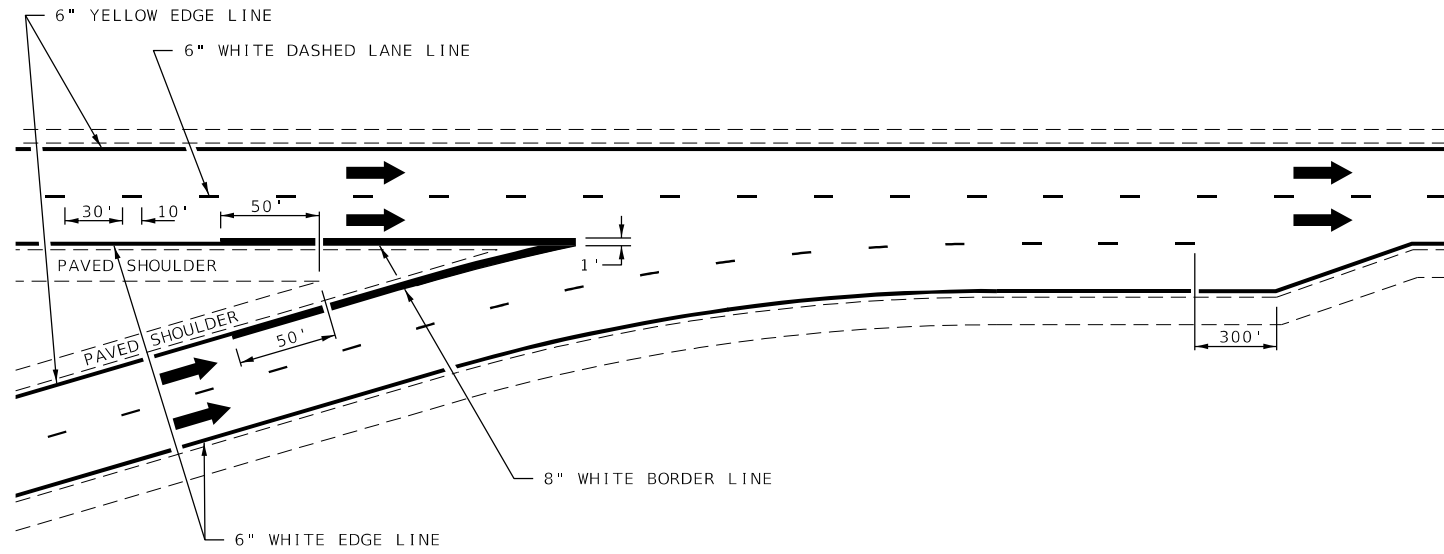


USER NAME = steffemk	DESIGNED -	REVISED -
PLOT SCALE = 20.0000 ' / in.	DRAWN -	REVISED -
PLOT DATE = 2/10/2020	CHECKED -	REVISED -
	DATE -	REVISED -

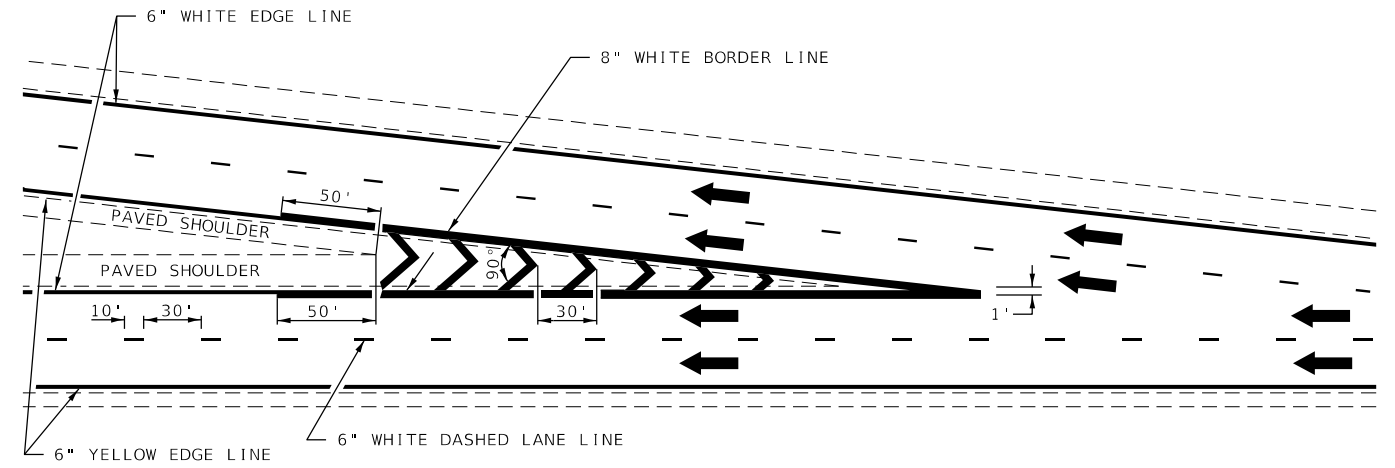
**STATE OF ILLINOIS
DEPARTMENT OF TRANSPORTATION**

PLAN SHEET
 SCALE: SHEET OF SHEETS STA. TO STA.

F.A.P. RTE.	SECTION	COUNTY	TOTAL SHEETS	SHEET NO.
322A	(58-20)PVMT PRSV	MACON	13	11
CONTRACT NO. 74955				
ILLINOIS FED. AID PROJECT				

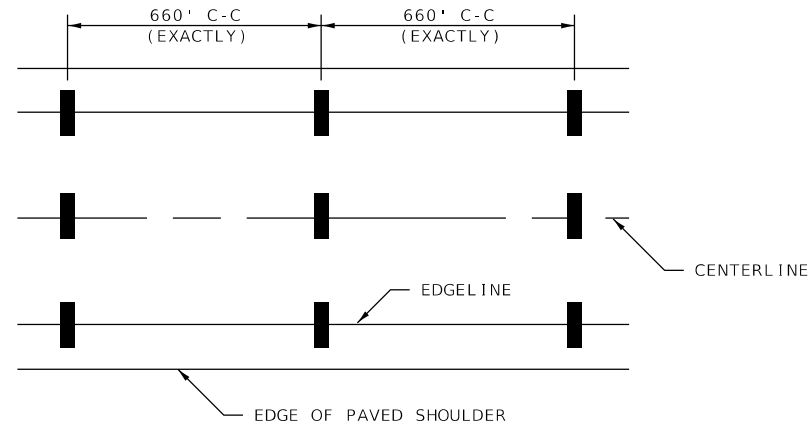


TYPICAL CONVERGENCE MARKING

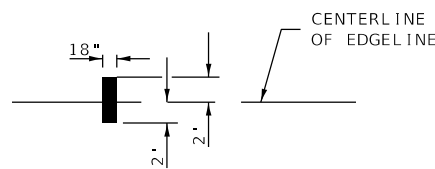


TYPICAL DIVERGENCE MARKING

AERIAL SPEED CHECK ZONES



IT WILL BE NECESSARY TO HAVE A REPRESENTATIVE OF THE STATE POLICE PRESENT SO THAT THE ACCURACY OF MEASUREMENT CAN BE ATTESTED TO IN COURT.



NOT TO SCALE

DISTRICT 7 DETAIL NO. 7800002

USER NAME = steffenmk	DESIGNED -	REVISED -	MMO 12-99
	DRAWN -	REVISED -	DRM 08-04
PLOT SCALE = 100,0000' / in.	CHECKED -	REVISED -	MKS 04-08
PLOT DATE = 2/10/2020	DATE -	REVISED -	MMO 01-2020

STATE OF ILLINOIS
 DEPARTMENT OF TRANSPORTATION

TYPICAL APPLICATIONS OF FREEWAY/EXPRESSWAY
 PAVEMENT MARKING

SCALE: SHEET 2 OF 2 SHEETS STA. TO STA.

F.A. RTE.	SECTION	COUNTY	TOTAL SHEETS	SHEET NO.
322A	(58+20)PVMT PRSV	MACON	13	13
CONTRACT NO. 74955				
ILLINOIS FED. AID PROJECT				

MODEL: Default
 FILE: h:\mktc_pav\pub\harronm.dwg
 PROJECT: 74955\CADD\Drawings\DOT_Offices\District 7\Projects\74955\CADD\Drawings\DOT_Offices\District 7\Projects\74955-sht-detail.dwg