

084

FAU RTE	SECTION	COUNTY	TOTAL SHEETS	SHEET NO
9162	147 BR 3	ST CLAIR	12	1
		ILLINOIS	CONTRACT NO. 76N21	

STATE OF ILLINOIS
DEPARTMENT OF TRANSPORTATION

PROPOSED HIGHWAY PLANS

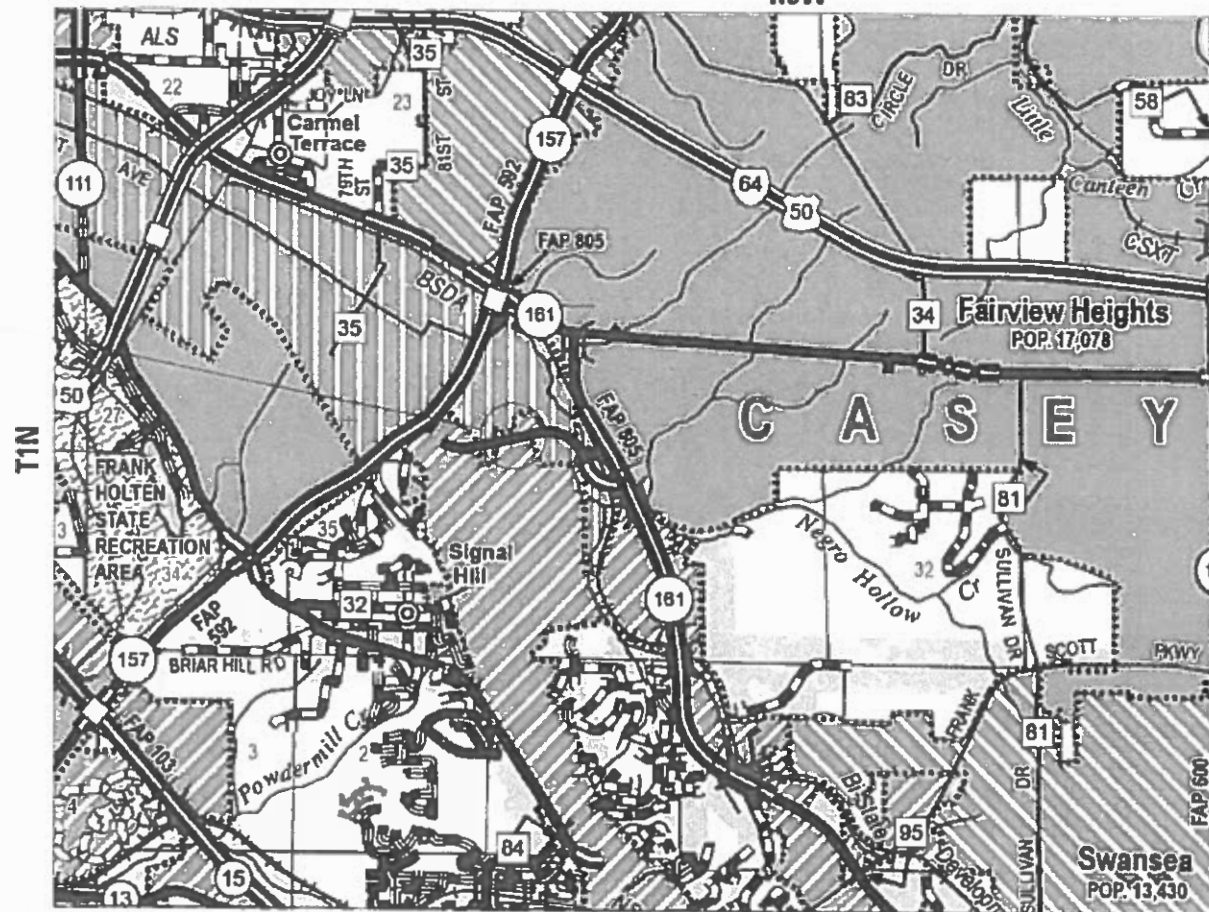
FAU ROUTE 9162 (LEBONON RD)
SECTION 147-BR-3
PROJECT STP-CVIV(515)
BRIDGE REPAIR, JOINT REPAIR & DECK OVERLAY
ST CLAIR COUNTY

FOR INDEX OF SHEETS, SEE SHEET NO. 2

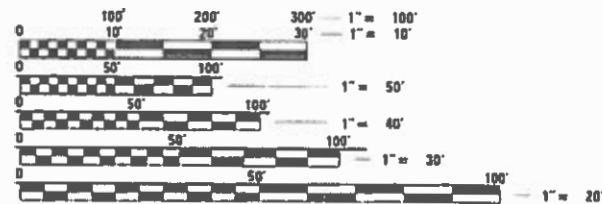
D-98-047-20



C-98-061-20 R9W



PROJECT LOCATION:
LEBANON RD OVER SCHOENBERGER CREEK
0.1 MILE WEST OF IL 161 SN-082-0258



FULL SIZE PLANS HAVE BEEN PREPARED USING STANDARD ENGINEERING SCALES. REDUCED SIZED PLANS WILL NOT CONFORM TO STANDARD SCALES. IN MAKING MEASUREMENTS ON REDUCED PLANS, THE ABOVE SCALES MAY BE USED.

J.U.L.I.E.
JOINT UTILITY LOCATION INFORMATION FOR EXCAVATORS
1-800-892-0123
OR 811

PROJECT ENGINEER: HERVE GELIN 618-346-3179
PROJECT MANAGER: ALONZO WASHINGTON 618-346-3445

GROSS LENGTH = 140 FT. = 0.02 MILE
NET LENGTH = 140 FT. = 0.02 MILE

CONTRACT NO. 76N21

STATE OF ILLINOIS
DEPARTMENT OF TRANSPORTATION

SUBMITTED Jan 27 20 20
Karth Polato
REGIONAL ENGINEER

March 20 20 20
A. E. K.
ENGINEER OF DESIGN AND ENVIRONMENT

March 20 20 20
Alonzo Washington
DIRECTOR OF HIGHWAYS PROJECT IMPLEMENTATION

PRINTED BY THE AUTHORITY
OF THE STATE OF ILLINOIS

INDEX OF SHEETS

- 1. COVER SHEET
- 2. INDEX OF SHEETS , HIGHWAY STANDARDS, GENERAL NOTES & COMMITMENTS
- 3-4. SUMMARY OF QUANTITIES
- 5-10. BRIDGE PLANS
- 11. REMOVAL & REPLACEMENT DETAILS
- 12. TRAFFIC CONTROL PLAN

HIGHWAY STANDARDS

- 000001-07
- 001006
- 701321-18
- 701501-06
- 701901-08
- 704001-08
- 780001-05
- 781001-04

GENERAL NOTES

1. ILLINOIS STATE LAW REQUIRES A 48-HOUR NOTICE BE GIVEN TO ALL UTILITIES WITHIN THE PROJECT AREA BEFORE DIGGING. FIELD MARKING OF FACILITIES MAY BE OBTAINED BY CONTACTING J.U.L.I.E. OR FOR NON-MEMBERS, THE UTILITY COMPANY DIRECTLY. AGENCIES KNOWN TO HAVE FACILITIES WITHIN THE PROJECT AREA ARE AS FOLLOWS:
 - AMEREN ILLINOIS - GAS & ELECTRIC (AERIAL & BURIED)
 - AT&T ILLINOIS - COMMUNICATIONS (AERIAL & BURIED)
 - CHARTER COMMUNICATIONS - CABLE TV (AERIAL & BURIED)
 - CITY OF FAIRVIEW HEIGHTS - SANITARY SEWER (BURIED)
 - ILLINOIS AMERICAN WATER COMPANY - SANITARY SEWER (BURIED)

MEMBERS OF J.U.L.I.E. CALL TOLL FREE (800) 892-0123 OR 811 AND ARE INDICATED BY *. NON- J.U.L.I.E. MEMBERS MUST BE NOTIFIED INDIVIDUALLY.

2. THE CONTRACTOR AND THE ENGINEER SHALL BE AWARE THAT NO SURVEY WAS PERFORMED FOR THIS PROJECT. THE STATIONING SHOWN IN THE PLAN SHEETS WAS CREATED USING MICROFILM. IT SHALL BE ASSUMED TO BE APPROXIMATE. THE CONTRACTOR SHALL VERIFY DIMENSIONS AND CONDITIONS IN THE FIELD PRIOR TO CONSTRUCTION AND ORDERING OF MATERIALS.
3. THE PROPOSED PAVEMENT MARKING SHALL MATCH THE LOCATIONS OF THE EXISTING PAVEMENT MARKING, AS DIRECTED BY THE ENGINEER.
4. THE DEPARTMENT STRONGLY ENCOURAGES THE PRIME CONTRACTOR AND THEIR APPROVED SUB-CONTRACTORS TO HIRE MINORITY, WOMEN AND DISADVANTAGED INDIVIDUALS FROM ITS FEDERALLY FUNDED HIGHWAY CONSTRUCTION CAREERS TRAINING PROGRAM (HCCTP) TO HELP MEET WORKFORCE AND TRAINEE GOALS. THIS PROGRAM IS TRAINING MINORITIES, WOMEN AND DISADVANTAGED INDIVIDUALS IN HIGHWAY CONSTRUCTION-RELATED SKILLS, E.G., MATH FOR THE TRADES, JOB READINESS, TECHNICAL SKILLS COURSEWORK (CARPENTRY, CONCRETE FLATWORK, BLUEPRINT READING, SITE PLANS, SITE WORK, TOOLS USE, ETC.) AND OSHA 10 HOUR CERTIFICATION, TO PREPARE THEM FOR A CAREER IN THE HIGHWAY CONSTRUCTION TRADES. GRADUATES ARE WELL-TRAINED AND READY TO BECOME PRODUCTIVE ENTRY-LEVEL CONSTRUCTION WORKERS. CONTACT THE DISTRICT 8 EEO OFFICE AT 618-346-3360 AND/OR THE HCCTP COORDINATOR AT 618-874-6528 TO LEARN MORE ABOUT THE PROGRAM AND FOR ASSISTANCE IN MEETING WORKFORCE AND TRAINEE GOALS.
5. THE FOLLOWING MIXTURE REQUIREMENTS ARE APPLICABLE FOR THIS PROJECT:

MIXTURE USE	POLY SURFACE
AC/PG	SBS PG 76-22
RAP % (MAX)	SEE SPECIAL PROVISION
DESIGN AIR VOIDS	4.0% @ Ndes=70
MIX COMPOSITION (Gradation)	IL 9.5
FRICITION AGG	MIXTURE "D"
QUALITY MGMT PROGRAM	QC/QA

PLAN QUANTITIES FOR HOT-MIX ASPHALT ITEMS ARE CALCULATED USING A UNIT WEIGHT OF 112 LB/SQ YD/IN.

6. WHERE PERMANENT RRP ARE PRESENT AND CONFLICT WITH THE REVISED TRAFFIC PATTERNS ONLY THE REFLECTORS SHALL BE REMOVED AND PAID FOR AS RAISED REFLECTIVE PAVEMENT MARKER REMOVAL (7 TOTAL).
7. THE BOTTOM 6" OF THE TEMPORARY CONCRETE BARRIER SHALL BE PAINTED WITH TEMPORARY PAVEMENT MARKING CONSISTENT WITH TRAFFIC CONTROL. THIS WILL BE MEASURED FOR PAYMENT BUT SHALL BE CONSIDERED AS INCLUDED IN THE COST OF TEMPORARY CONCRETE BARRIER AND NO OTHER COMPENSATION SHALL BE ALLOWED.

MODEL: Default
FILE NAME: P:\p\planroom.dat
PROJECT: P:\PROJECTS\DOT\Office\District 8\Projects\DOT\76N21\CADDData\CAD\Networks\DOT\76N21.sht
SHEET: 2

REV-SEP

USER NAME = washingtona	DESIGNED -	REVISED -	STATE OF ILLINOIS DEPARTMENT OF TRANSPORTATION	INDEX OF SHEETS, HIGHWAY STANDARDS, GENERAL NOTES & COMMITMENTS	F.A.U. RTE.	SECTION	COUNTY	TOTAL SHEETS	SHEET NO.	
	DRAWN -	REVISED -			9162	147-BR-3	ST. CLAIR	12	2	
PLOT SCALE = 100.0000' / in.	CHECKED -	REVISED -			CONTRACT NO. 76N21					
PLOT DATE = 1/27/2020	DATE -	REVISED -			ILLINOIS FED. AID PROJECT					
				SCALE:	SHEET	OF	SHEETS	STA.	TO STA.	

URBAN
CONSTR. CODE

80% FED
20% STATE

BRIDGE

0059

S.N.

CODE NO.	ITEM	UNIT	TOTAL QUANTITY	S.N.
20300100	CHANNEL EXCAVATION	CU YD	185	185
28100107	STONE RIPRAP, CLASS A4	SQ YD	80	80
40600982	HOT-MIX ASPHALT SURFACE REMOVAL - BUTT JOINT	SQ YD	375	375
40604160	POLYMERIZED HOT-MIX ASPHALT SURFACE COURSE, IL-9.5, MIX "D", N50	TON	42	42
40700100	BITUMINOUS MATERIALS (TACK COAT)	POUND	126	126
42001300	PROTECTIVE COAT	SQ YD	634	634
44000155	HMA SURFACE REMOVAL 1 1/2"	SQ YD	587	587
50102400	CONCRETE REMOVAL	CU YD	13.2	13.2
50300100	FLOOR DRAINS	EACH	10	10
50300255	CONCRETE SUPERSTRUCTURE	CU YD	22.1	22.1
50300260	BRIDGE DECK GROOVING	SQ YD	561	561
50800205	REINFORCEMENT BARS, EPOXY COATED	POUND	15420	15420
50800515	BAR SPLICERS	EACH	163	163
52000110	PREFORMED JOINT STRIP SEAL	FOOT	92	92
63301990	REMOVE AND REERECT TRAFFIC BARRIER TERMINALS, TYPE1	EACH	2	2
67100100	MOBILIZATION	L SUM	1	1

URBAN
CONSTR. CODE

80% FED
20% STATE

BRIDGE

0059

S.N.

CODE NO.	ITEM	UNIT	TOTAL QUANTITY	S.N.
70102620	TRAFFIC CONTROL AND PROTECTION, STANDARD 701501	L SUM	1	1
70106500	TEMPORARY BRIDGE TRAFFIC SIGNALS	EACH	1	1
70106700	TEMPORARY RUMBLE STRIPS	EACH	4	4
70107005	PAVEMENT MARKING BLACKOUT TAPE, 5"	FOOT	480	480
70107025	CHANGEABLE MESSAGE SIGN	CAL DA	60	60
70300100	SHORT TERM PAVEMENT MARKING	FOOT	220	220
70300150	SHORT TERM PAVEMENT MARKING REMOVAL	SQ FT	73	73
70400100	TEMPORARY CONCRETE BARRIER	FOOT	100	100
70400200	RELOCATE TEMPORARY CONCRETE BARRIER	FOOT	100	100
70600250	IMPACT ATTENUATORS, TEMPORARY (NON- REDIRECTIVE), TEST LEVEL 3	EACH	2	2
70600350	IMPACT ATTENUATORS, RELOCATE (NON- REDIRECTIVE), TEST LEVEL 3	EACH	2	2
78000200	THERMOPLASTIC PAVEMENT MARKING - LINE4"	FOOT	810	810
*78100100	RAISED REFLECTIVE PAVEMENT MARKER	EACH	10	10
78300200	RAISED REFLECTIVE PAVEMENT MARKER REMOVAL	EACH	10	10

* SPECIALTY ITEM

REV-SEP

MODEL: Default
FILE NAME: pr\p1amcom.dct, illinois.gov\PIWDOT\Documents\DOT_Offices\District_8\Projects\0876N2\CADData\CAD\resets\0876N21-sh-500.dgn

USER NAME = washingtona	DESIGNED -	REVISED -
	DRAWN -	REVISED -
PLOT SCALE = 100.0000' / in.	CHECKED -	REVISED -
PLOT DATE = 1/27/2020	DATE -	REVISED -

STATE OF ILLINOIS
DEPARTMENT OF TRANSPORTATION

SUMMARY OF QUANTITIES

SCALE: SHEET 1 OF 2 SHEETS STA. TO STA.

F.A.U. RTE.	SECTION	COUNTY	TOTAL SHEETS	SHEET NO.
9162	147-BR-3	ST CLAIR	12	3
			CONTRACT NO. 76N21	
ILLINOIS FED. AID PROJECT				

URBAN
CONSTR. CODE

80% FED
20% STATE

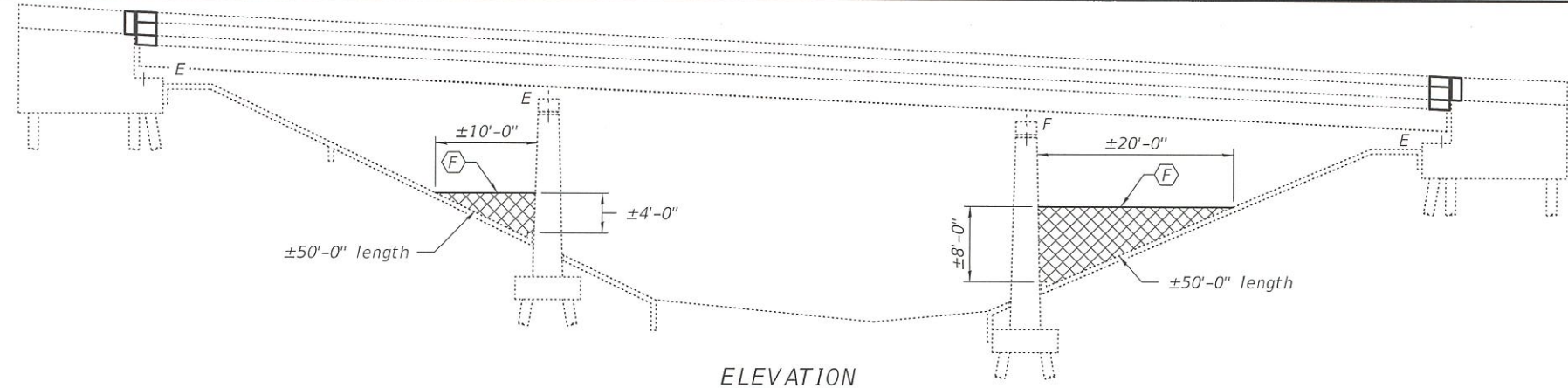
BRIDGE
0059
S.N.

CODE NO.	ITEM	UNIT	TOTAL QUANTITY	S.N.
X5030304	CONCRETE WEARING SURFACE,4"	SQ YD	587	587
X7010202	TRAFFIC CONTROL AND PROTECTION, STANDARD 701321 (SPECIAL)	EACH	1	1
Z0012132	BRIDGE DECK SCARIFICATION1"	SQ YD	587	587
Z0016001	DECK SLAB REPAIR (FULL DEPTH, TYPE I)	SQ YD	2	2

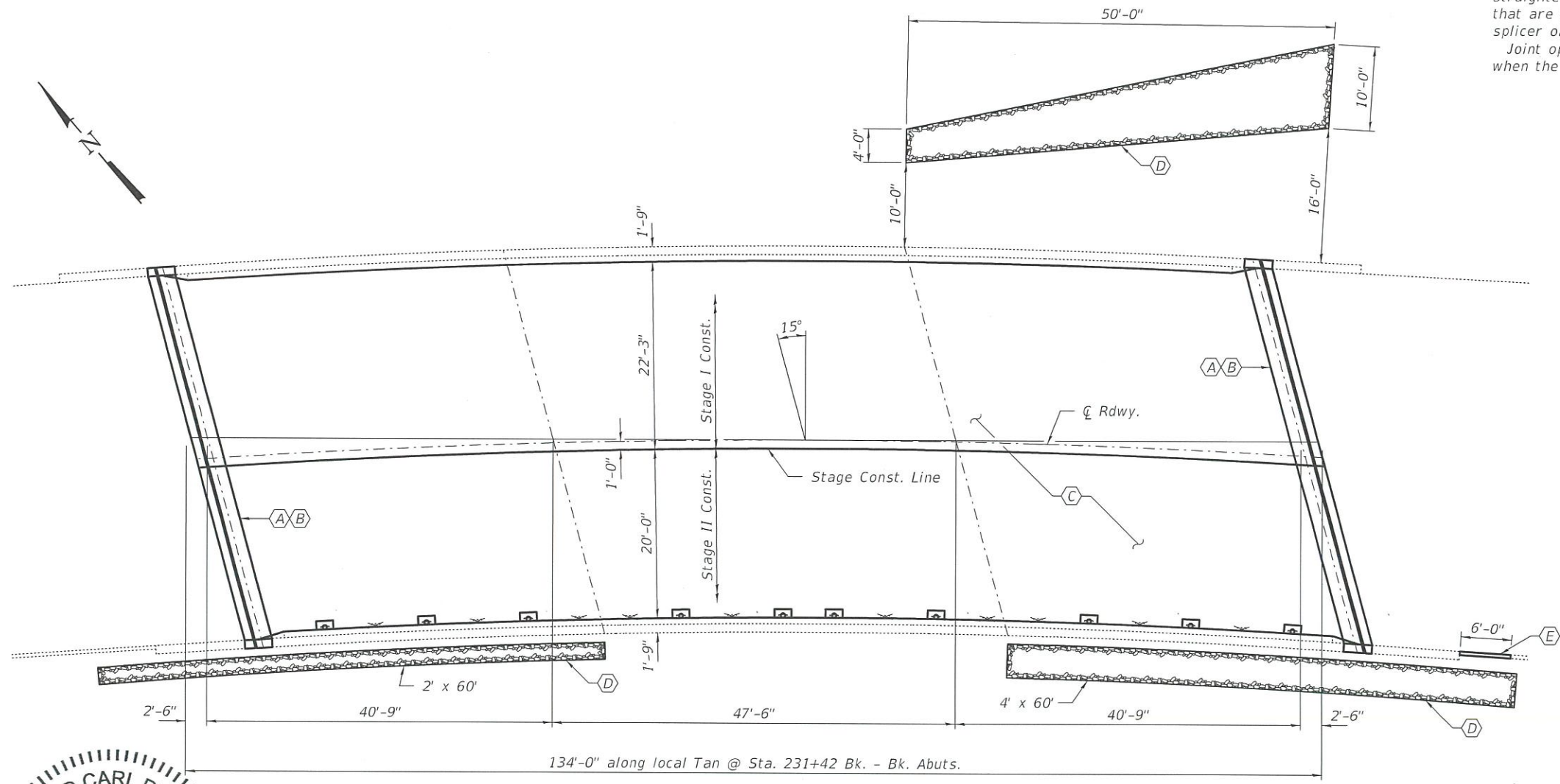
MODEL: Default
FILE: Main1.dwg
C:\ProgramData\CAD\sheet\76N21-1st-500.dgn

REV-SEP

USER NAME = washingtona	DESIGNED -	REVISED -	STATE OF ILLINOIS DEPARTMENT OF TRANSPORTATION	SUMMARY OF QUANTITIES				F.A.U. RTE.	SECTION	COUNTY	TOTAL SHEETS	SHEET NO.
	DRAWN -	REVISED -		9162	147-BR-3	ST CLAIR	12	4				
PLOT SCALE = 100.0000' / in.	CHECKED -	REVISED -						CONTRACT NO. 76N21				
PLOT DATE = 1/27/2020	DATE -	REVISED -		SCALE:	SHEET 2	OF 2	SHEETS	STA.	TO STA.	ILLINOIS FED. AID PROJECT		



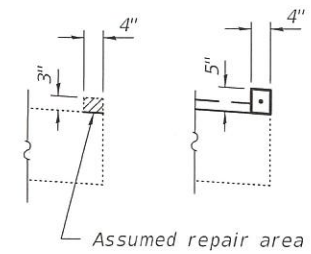
ELEVATION



PLAN

GENERAL NOTES

All structural steel shall conform to AASHTO Classification M-270 Gr. 36, unless otherwise noted.
 Plan dimensions and details relative to existing plans are subject to nominal construction variations. The Contractor shall field verify existing dimensions and details affecting new construction and make necessary approved adjustments prior to construction or ordering of materials. Such variations shall not be cause for additional compensation for a change in scope of the work, however, the Contractor will be paid for the quantity actually furnished at the unit price bid for the work.
 Reinforcement bars designated (E) shall be epoxy coated.
 Prior to pouring the new concrete deck, all heavy or loose rust, loose mill scale, and other loose or potentially detrimental foreign material shall be removed from the surfaces in contact with concrete. Tightly adhered paint may remain unless otherwise noted. Removal shall be accomplished by methods that will not damage the steel and the cost will be included in the pay item covering removal of the existing concrete.
 Existing reinforcement bars extending into the removal area shall be cleaned, straightened and incorporated into the new construction. Any reinforcement bars that are damaged during concrete removal shall be replaced with an approved bar splicer or anchorage system. Cost included with Concrete Removal.
 Joint openings shall be adjusted according to Article 520.04 of the Std. Specs. when the deck is poured at an ambient temperature other than 50° F.



SECTION THRU CURB

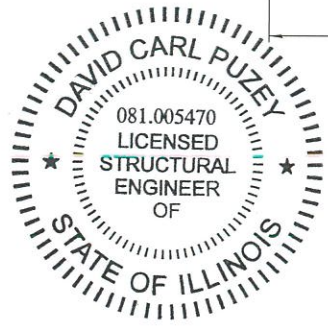
SCOPE OF WORK

- (A) - Remove & Replace existing Expansion Joint
- (B) - Encase Beam Ends with Concrete
- (C) - Remove Exist. HMA (1½"), Scarify Bridge Deck 1" and install 4½" Reinforced Concrete Overlay.
- (D) - New Stone Riprap
- (E) - Approach Curb Repair
- (F) - Remove unbalanced fill behind piers.
- ☒ - Eliminate Drains
- ☐ - Replace Drains

TOTAL BILL OF MATERIAL

ITEM	UNIT	QUANTITY
Concrete Removal	Cu. Yd.	13.2
Concrete Superstructure	Cu. Yd.	22.1
Reinforcement Bars, Epoxy Coated	Pound	15420
Bridge Deck Scarification, 1"	Sq. Yd.	587
Bridge Deck Grooving	Sq. Yd.	561
Preformed Joint Strip Seal	Foot	92
* Protective Coat	Sq. Yd.	634
Stone Riprap, Class A4	Sq. Yd.	80
Channel Excavation	Cu. Yd.	185
Concrete Wearing Surface, 4½"	Sq. Yd.	587
Bar Splicers	Each	163
HMA Surface Removal, 1½"	Sq. Yd.	587
Floor Drains	Each	10

* Apply to new concrete and concrete overlay surfaces only.



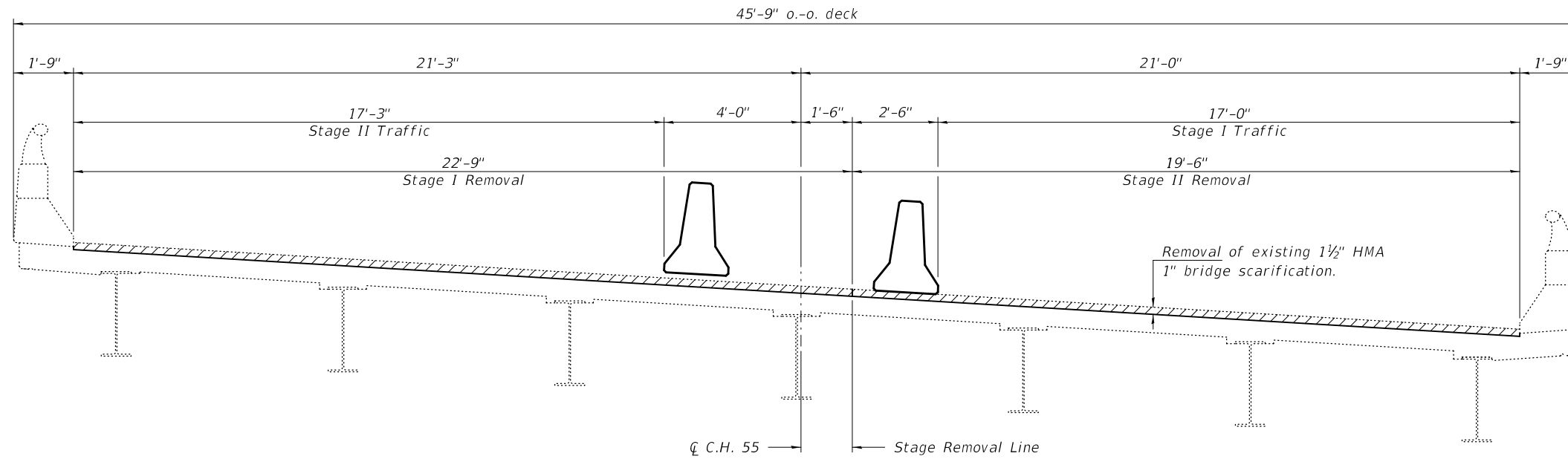
EXPIRES 11-30-2020

DESIGNED - <i>Staple...</i>	EXAMINED - <i>Tim A. Dost</i>	DATE - MARCH 9, 2020
CHECKED - <i>Victor H. Veliz</i>	PASSED - <i>David Carl Puzey</i>	REVISOR -
DRAWN - <i>daburdell</i>		REVISOR -
CHECKED - <i>SUR VHV</i>		

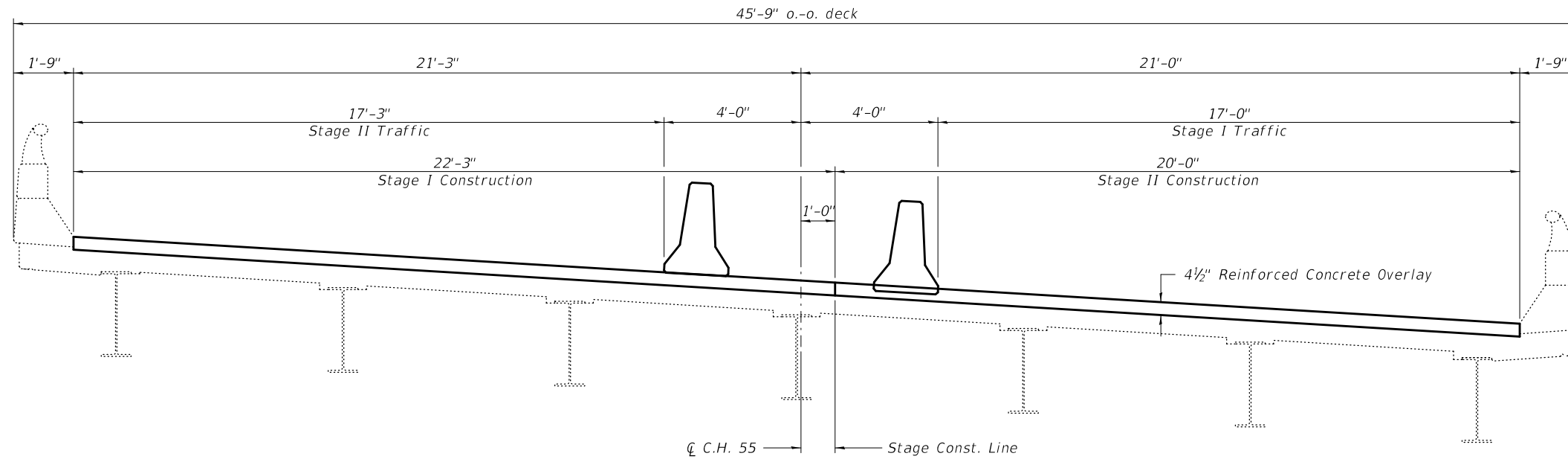
STATE OF ILLINOIS
 DEPARTMENT OF TRANSPORTATION

GENERAL PLAN AND ELEVATION
 FAU 9162 (LEBANON RD) OVER SCHOENBERGER CREEK
 SN 082-0258

FAU. RTE. 9162	SECTION 147-BR-3	COUNTY ST. CLAIR	TOTAL SHEETS 12	SHEET NO. 5
ILLINOIS FED. AID PROJECT			CONTRACT NO. 76N21	



CROSS SECTION
(Showing Removal Looking South)



CROSS SECTION
(Showing Concrete Overlay Looking South)

DESIGNED - SMR
CHECKED - VHV
DRAWN - daburdell
CHECKED - SMR VHV

EXAMINED
PASSED

Timothy A. Daburdell
ENGINEER OF STRUCTURAL SERVICES

Carl Ringer
ENGINEER OF BRIDGES AND STRUCTURES

DATE - MARCH 9, 2020

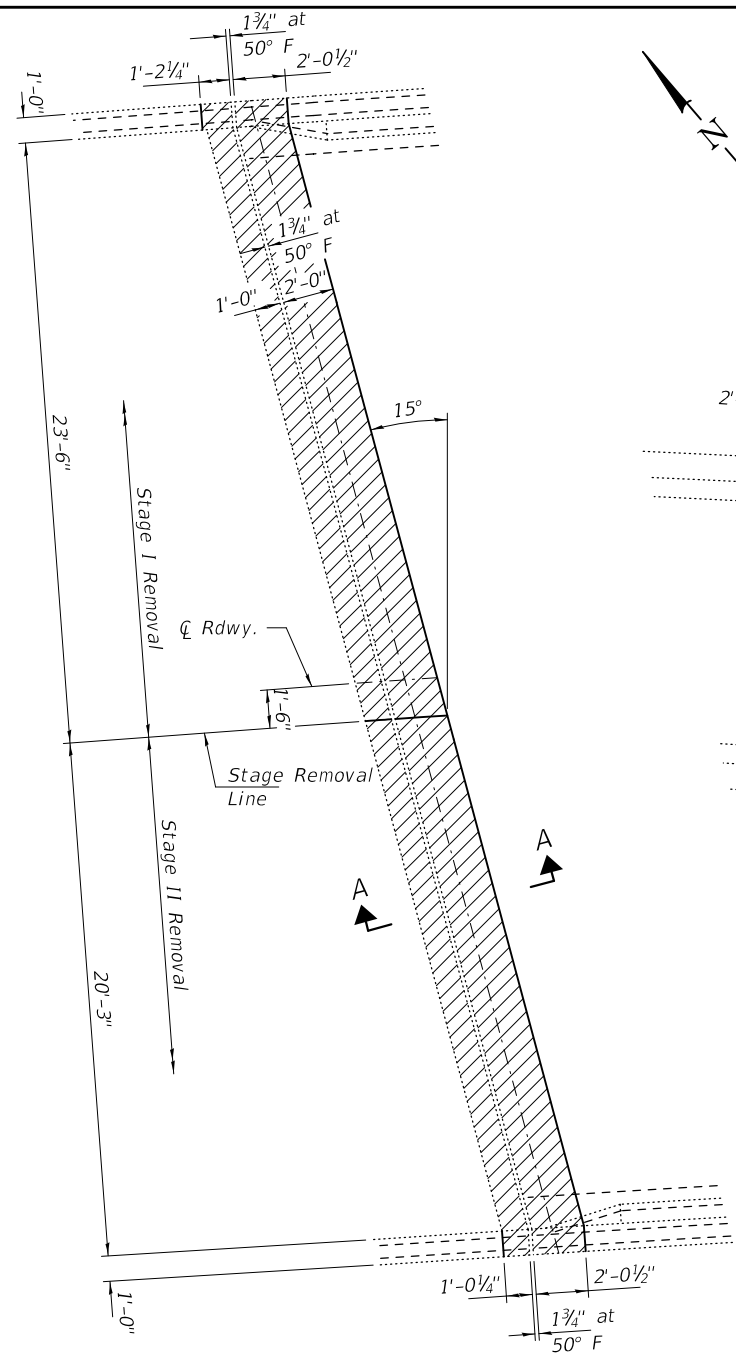
REVISED -
REVISED -

STATE OF ILLINOIS
DEPARTMENT OF TRANSPORTATION

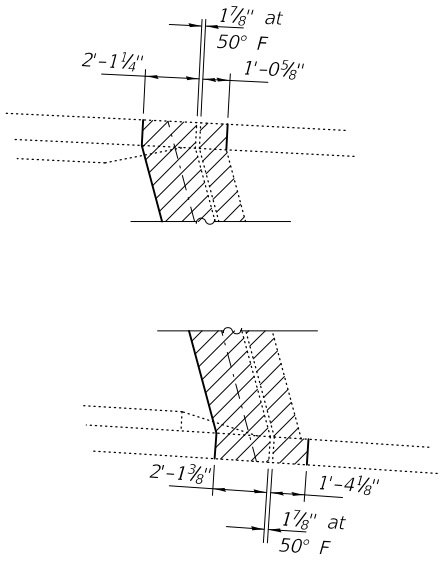
STAGE CONSTRUCTION DETAILS
SN 082-0258

SHEET NO. 2 OF 6 SHEETS

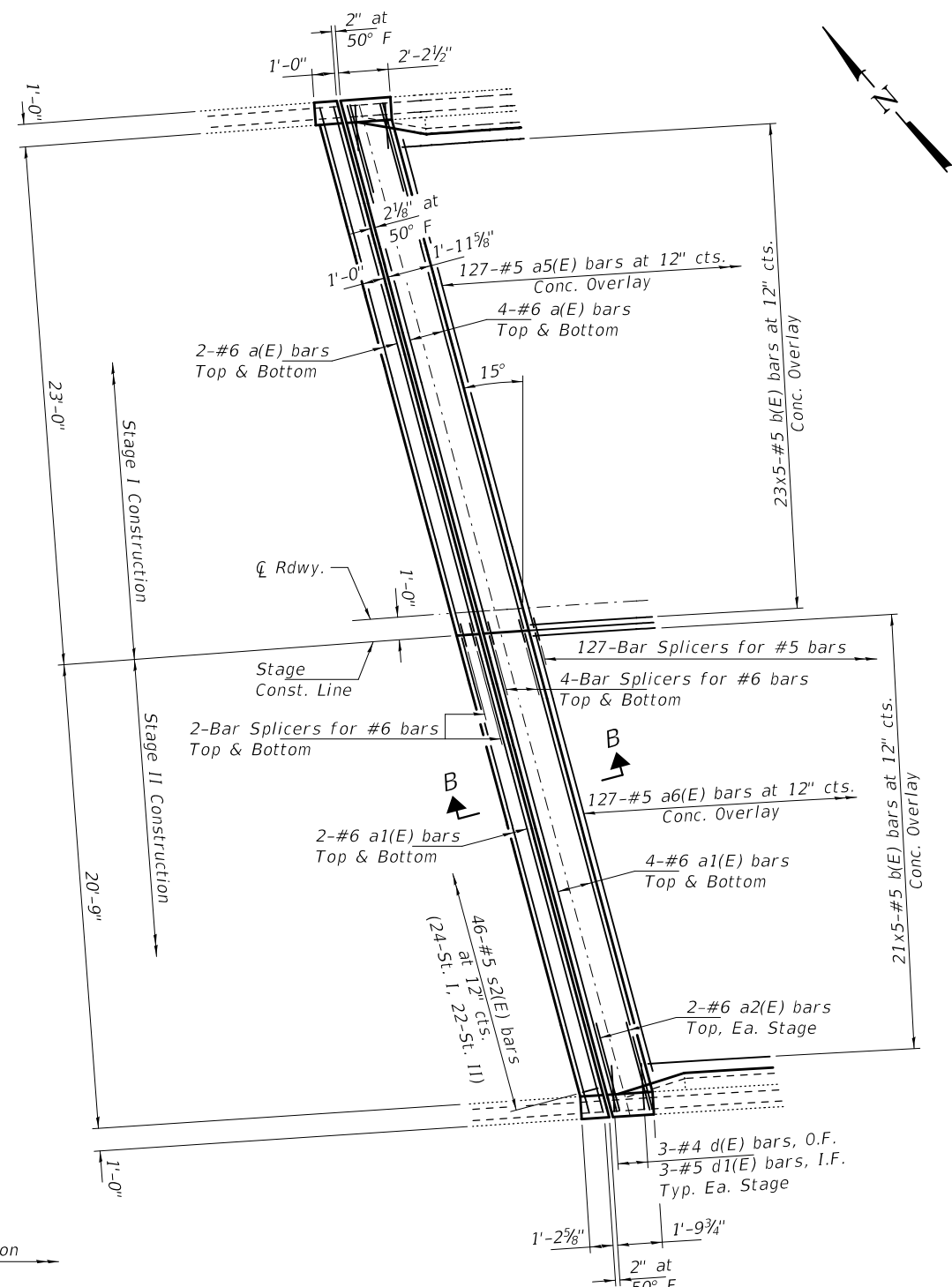
F.A.U. RTE.	SECTION	COUNTY	TOTAL SHEETS	SHEET NO.
9162	147-BR-3	ST. CLAIR	12	6
CONTRACT NO. 76N21				
ILLINOIS FED. AID PROJECT				



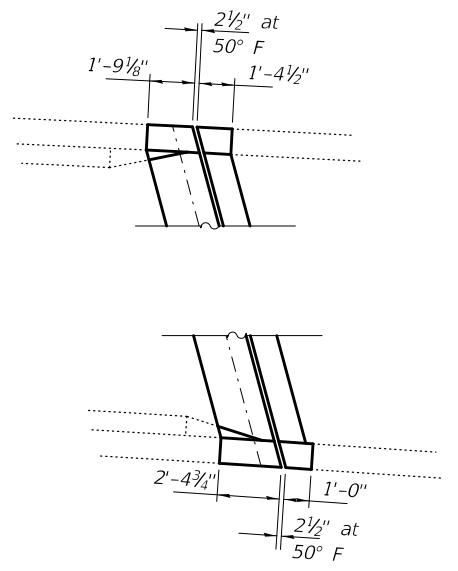
CONCRETE REMOVAL
(North Abut. shown, South Abut. similar, except as noted.)



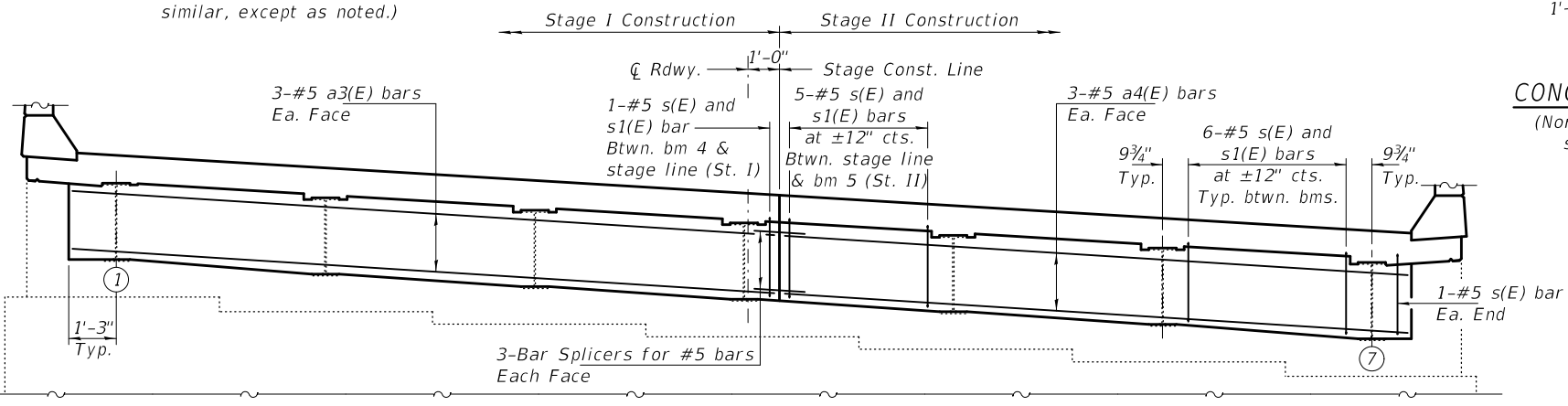
CONCRETE REMOVAL
(South Abut.)



CONCRETE REPLACEMENT
(North Abut. shown, South Abut. similar, except as noted.)



CONCRETE REPLACEMENT
(South Abut.)



BEAM END ENCASUREMENT
(Looking South)

BILL OF MATERIAL - 2 ABUTS.

Bar	No.	Size	Length	Shape
a(E)	24	#6	24'-4"	—
a1(E)	24	#6	22'-0"	—
a2(E)	8	#6	4'-0"	—
a3(E)	12	#5	22'-2"	—
a4(E)	12	#5	19'-8"	—
a5(E)	127	#5	21'-8"	—
a6(E)	127	#5	19'-11"	—
b(E)	220	#5	28'-1"	—
d(E)	12	#4	4'-9"	L
d1(E)	12	#5	4'-0"	L
s(E)	76	#5	5'-10"	U
s1(E)	76	#5	4'-10"	Γ
s2(E)	92	#5	3'-1"	Π
Concrete Removal			Cu. Yd.	13.2
Concrete Superstructure			Cu. Yd.	22.1
Reinforcement Bars, Epoxy Coated			Pound	15420
Bar Splicers			Each	163
Concrete Wearing Surface, 4 1/2"			Sq. Yd.	587

Notes:
Hatched areas indicate Concrete Removal.
See sheet 4 of 6 for Section A-A, Section B-B, Sections Thru Parapet and Concrete Overlay Details.
Bars indicated thus 22x5-#5 etc. indicates 22 lines of bars with 5 lengths per line.

MIN. BAR LAP
#5 - 3'-6"

DESIGNED - SMR
CHECKED - VHV
DRAWN - daburdell
CHECKED - SMR VHV

EXAMINED
PASSED
Timothy A. Daulton
ENGINEER OF STRUCTURAL SERVICES
Carl R. Roper
ENGINEER OF BRIDGES AND STRUCTURES

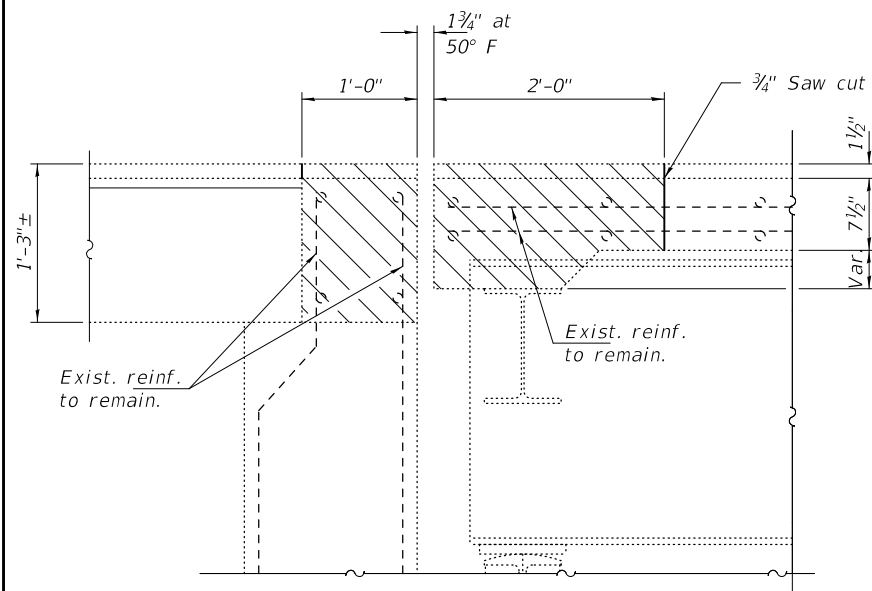
DATE - MARCH 9, 2020
REVISED -
REVISED -

STATE OF ILLINOIS
DEPARTMENT OF TRANSPORTATION

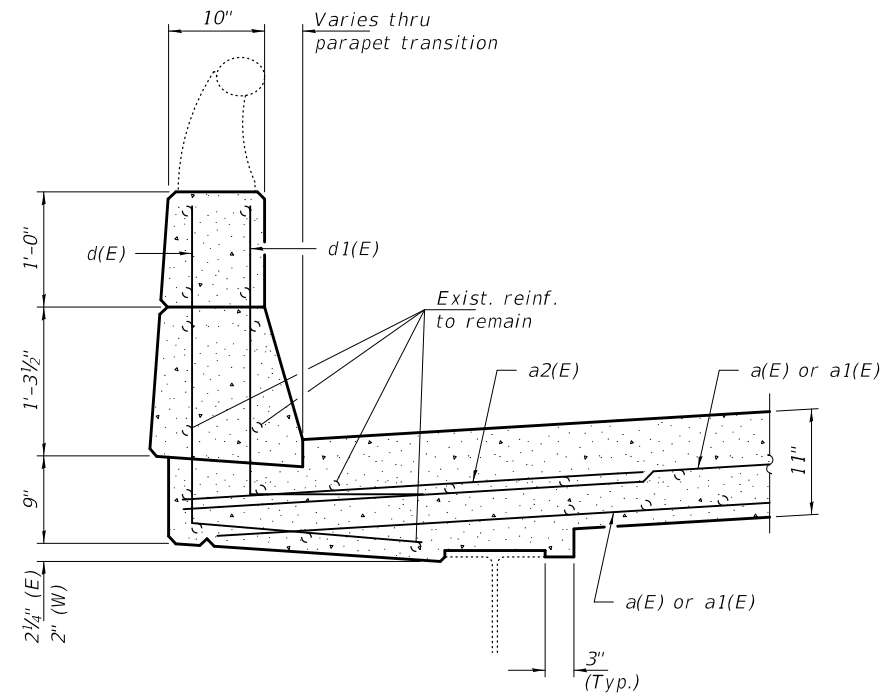
JOINT REMOVAL AND REPLACEMENT DETAILS
SN 082-0258

SHEET NO. 3 OF 6 SHEETS

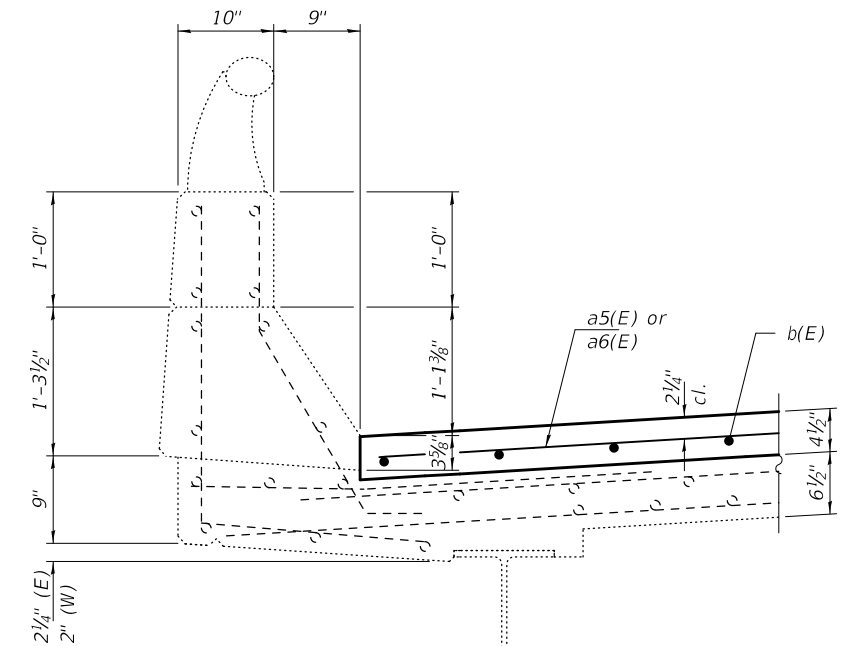
F.A.U. RTE.	SECTION	COUNTY	TOTAL SHEETS	SHEET NO.
9162	147-BR-3	ST. CLAIR	12	7
CONTRACT NO. 76N21				
ILLINOIS FED. AID PROJECT				



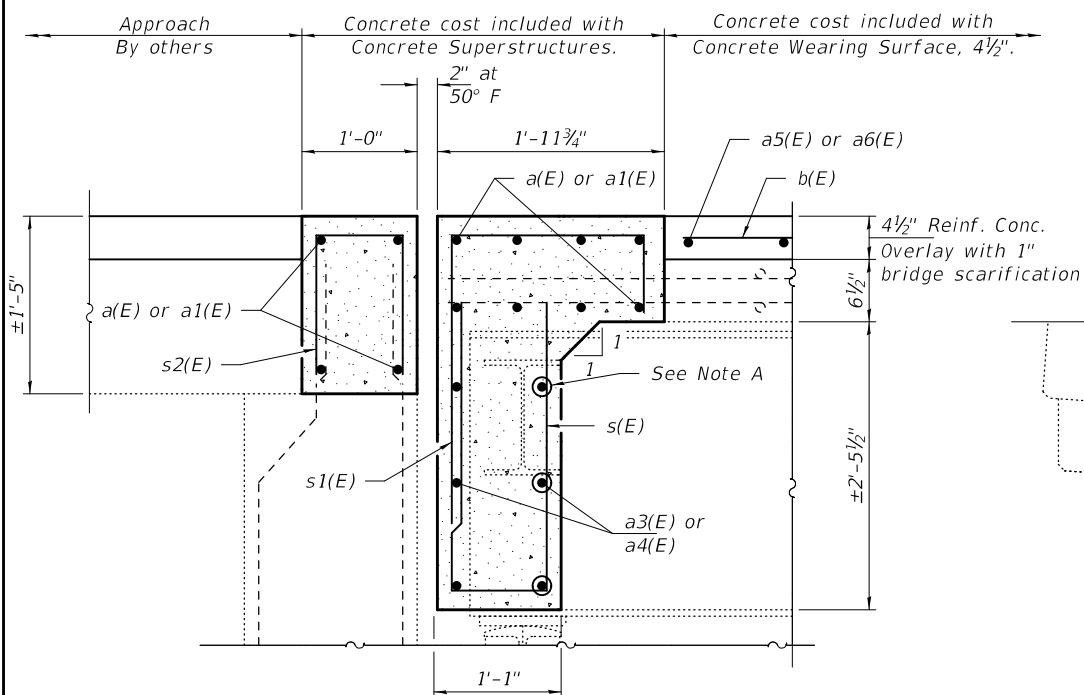
SECTION A-A



SECTION THRU PARAPET
(at Abutment)

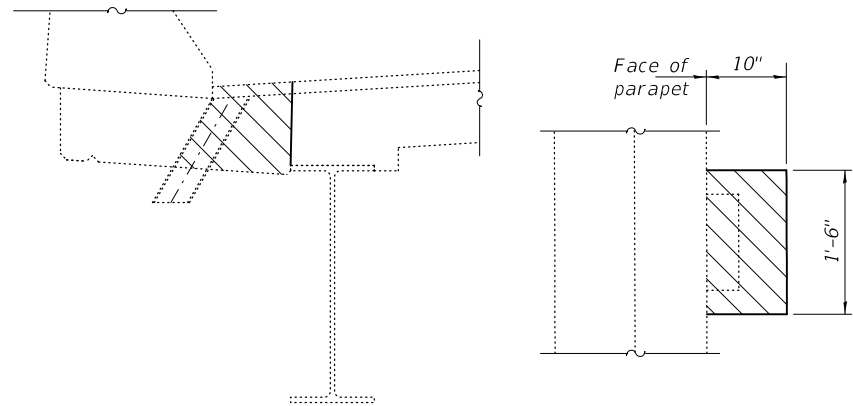


SECTION THRU PARAPET
(at Midspan)

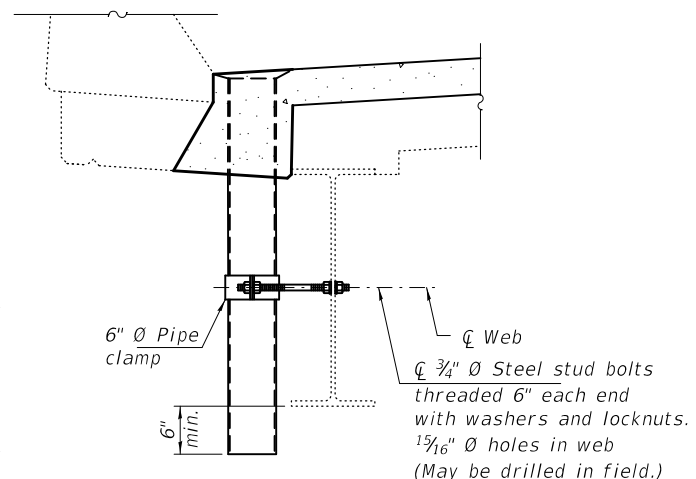


SECTION B-B

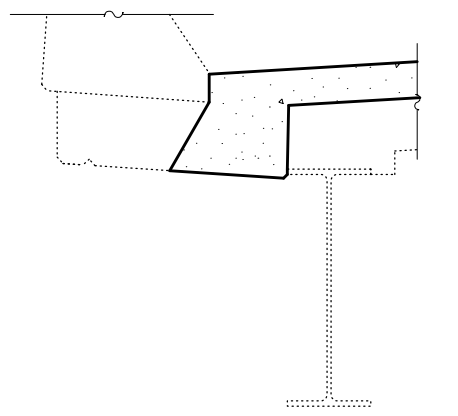
Note A:
Drill 1" holes through each beam, except for beam 4. Drill 1 1/2" holes through beam 4.



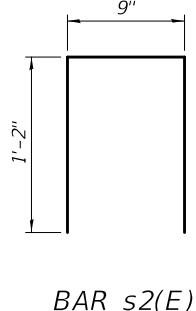
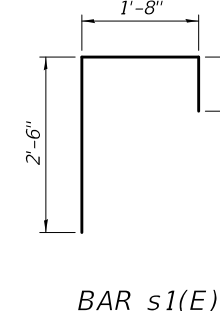
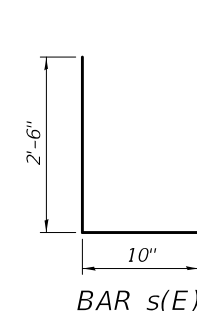
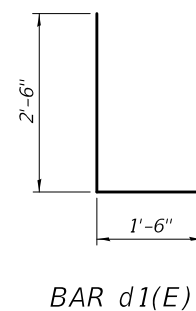
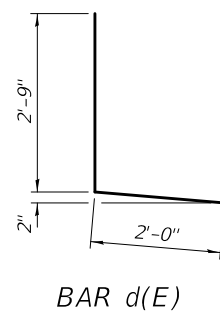
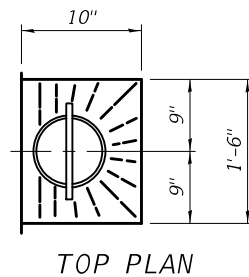
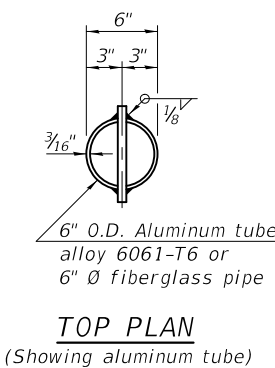
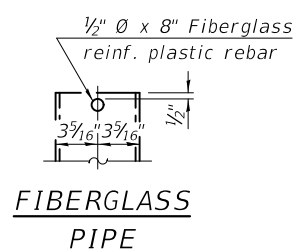
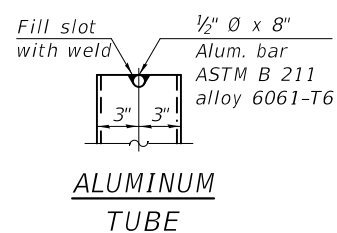
DRAIN REMOVAL DETAILS
Hatched area indicates Concrete Removal.
(20 locations)



NEW DRAIN DETAIL
(10 locations)



NEW DRAIN PLUG DETAIL
(10 locations)



DESIGNED - SMR
CHECKED - VHV
DRAWN - daburdell
CHECKED - SMR VHV

EXAMINED
PASSED
Timothy A. Daulton
ENGINEER OF STRUCTURAL SERVICES
Carl R. Berger
ENGINEER OF BRIDGES AND STRUCTURES

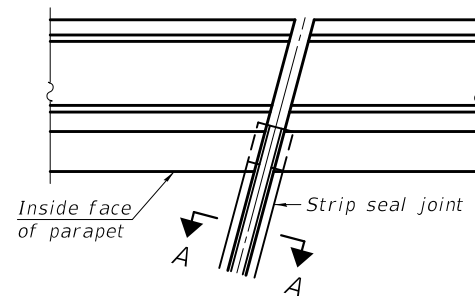
DATE - MARCH 9, 2020
REVISED -
REVISED -

STATE OF ILLINOIS
DEPARTMENT OF TRANSPORTATION

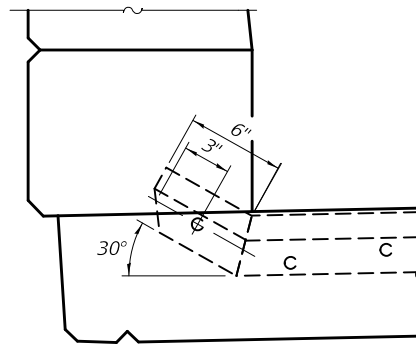
JOINT REMOVAL AND REPLACEMENT DETAILS
SN 082-0258

SHEET NO. 4 OF 6 SHEETS

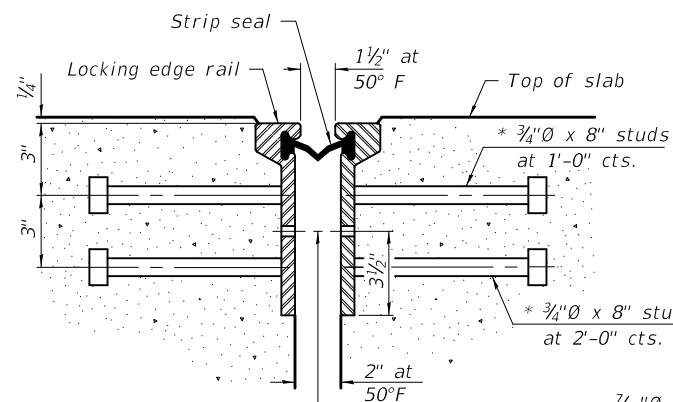
F.A.U. RTE.	SECTION	COUNTY	TOTAL SHEETS	SHEET NO.
9162	147-BR-3	ST. CLAIR	12	8
CONTRACT NO. 76N21				
ILLINOIS FED. AID PROJECT				



FOR SKEWS $\leq 30^\circ$
PLAN AT PARAPET

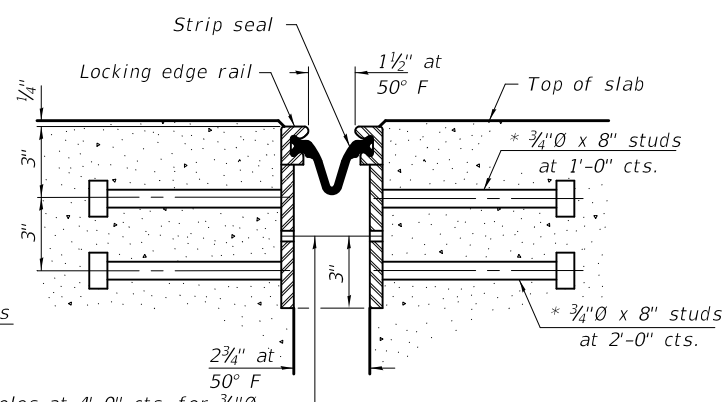


ELEVATION AT PARAPET
 (Skews $\leq 30^\circ$)



$7/16$ " \emptyset holes at 4'-0" cts. for $3/8$ " \emptyset bolts. All bolts shall be burned, sawed, or chipped off flush with the plates after forms are removed, typ.

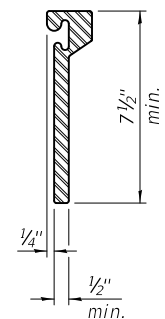
SECTION THRU ROLLED RAIL JOINT



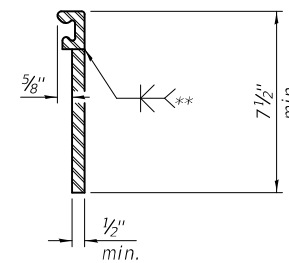
$7/16$ " \emptyset holes at 4'-0" cts. for $3/8$ " \emptyset bolts. All bolts shall be burned, sawed, or chipped off flush with the plates after forms are removed, typ.

SECTION THRU WELDED RAIL JOINT

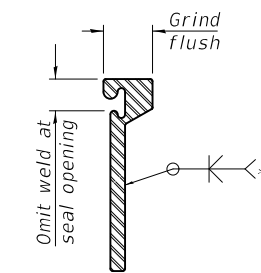
* Granular or solid flux filled headed studs conforming to Article 1006.32 of the Std. Specs., automatically end welded.



ROLLED EXTRUDED RAIL



WELDED RAIL



** Back gouge not required if complete joint penetration is verified by mock-up.

LOCKING EDGE RAIL SPLICE

The inside of the locking edge rail groove shall be free of weld residue.
 Rolled rail shown, welded rail similar.

LOCKING EDGE RAILS

Notes:
 The strip seal shall be made continuous and shall have a minimum thickness of $1/4$ ". The configuration of the strip seal shall match the configuration of the Locking Edge Rails. Open or "webbed" strip seal gland configurations are not permitted. The gland shall be sized for a maximum rated movement of 4 inches.
 The Locking Edge Rails depicted are conceptual only, except for the minimum dimensions shown. The actual configuration of the Locking Edge Rails and matching strip seal may vary from manufacturer to manufacturer. Flanged edge rails will not be allowed. Locking Edge Rails may be spliced at slope discontinuities.
 The manufacturer's recommended installation methods shall be followed.
 The joint opening and deck dimensions detailed on the superstructure are based on a rolled rail expansion joint. If the Contractor elects to use the welded rail expansion joint, the opening and deck dimensions shall be modified according to the dimensions detailed on this sheet. Required modifications shall be made at no additional cost to the State.
 All steel components shall be galvanized after fabrication according to Article 520.03 of the Standard Specifications.
 Maximum space between rail segments at stage lines shall be $3/16$ ", sealed with a suitable sealant.
 Parapet plates and anchorage studs for skews $> 30^\circ$ included in the cost of Preformed Joint Strip Seal.

BILL OF MATERIAL

Item	Unit	Total
Preformed Joint Strip Seal	Foot	92

DESIGNED - SMR
 CHECKED - VHV
 DRAWN - daburdell
 CHECKED - SMR VHV

EXAMINED
 PASSED
 Timothy A. Daburdell
 ENGINEER OF STRUCTURAL SERVICES
 Carl R. Berger
 ENGINEER OF BRIDGES AND STRUCTURES

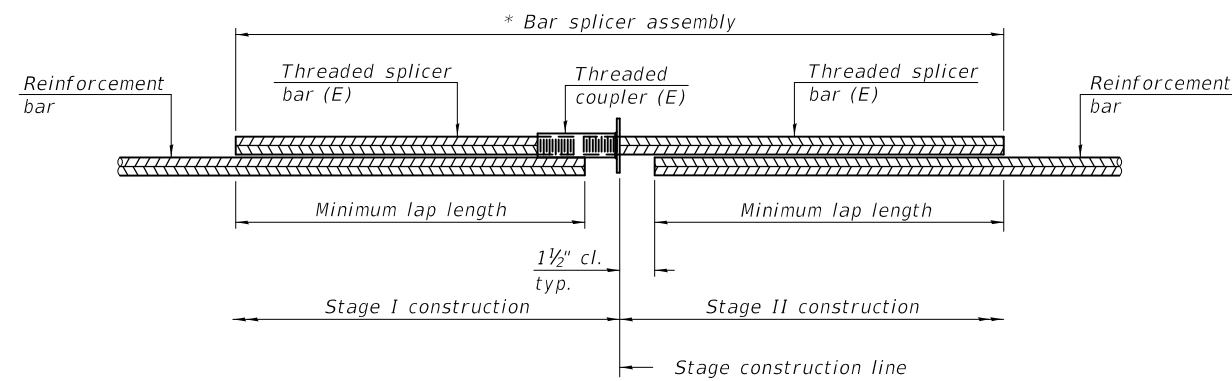
DATE - MARCH 9, 2020
 REVISED -
 REVISED -

STATE OF ILLINOIS
 DEPARTMENT OF TRANSPORTATION

PREFORMED JOINT STRIP SEAL
 SN 082-0258

SHEET NO. 5 OF 6 SHEETS

F.A.U. RTE.	SECTION	COUNTY	TOTAL SHEETS	SHEET NO.
9162	147-BR-3	ST. CLAIR	12	9
CONTRACT NO. 76N21				
ILLINOIS FED. AID PROJECT				

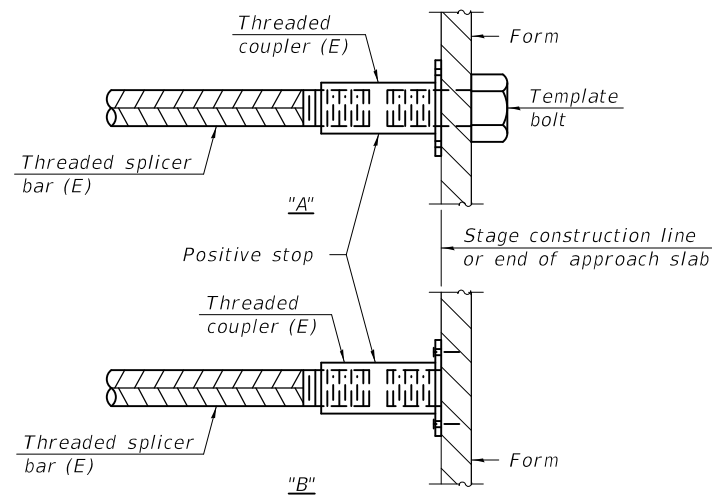


STANDARD BAR SPLICER ASSEMBLY PLAN
 (All components shall be provided from one supplier)

Threaded splicer bar length = min. lap length + 1 1/2" + thread length

* Epoxy not required on Bar Splicer Assembly components used in conjunction with black bars.

Location	Bar size	No. assemblies required	Minimum lap length
N. Abut. (Backwall)	#6	4	4'-0"
S. Abut. (Backwall)	#6	4	4'-0"
Deck	#5	127	3'-6"
N. Abut. (Bm Enc.)	#5	6	3'-6"
S. Abut. (Bm Enc.)	#5	6	3'-6"
N. Abut. (Deck)	#6	8	4'-10"
S. Abut. (Deck)	#6	8	4'-10"

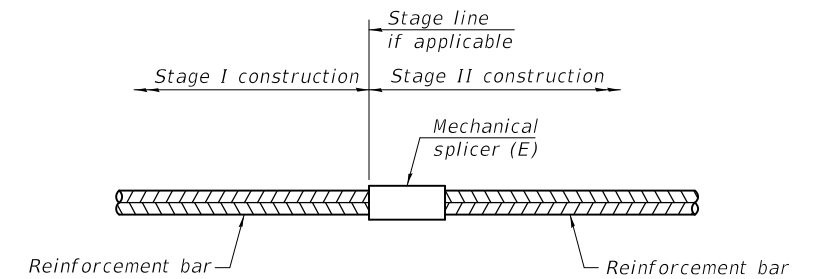


INSTALLATION AND SETTING METHODS

"A" : Set bar splicer assembly by means of a template bolt.

"B" : Set bar splicer assembly by nailing to wood forms or cementing to steel forms.

(E) : Indicates epoxy coating.



STANDARD MECHANICAL SPLICER

Location	Bar size	No. assemblies required

Notes:
 Splicer bars shall be deformed with threaded ends and have a minimum 60 ksi yield strength.
 All reinforcement shall be lapped and tied to the splicer bars.
 Bar splicer assemblies shall be epoxy coated according to the requirements for reinforcement bars. See Section 508 of the Standard Specifications.
 See approved list of bar splicer assemblies and mechanical splicers for alternatives.

BSD-1

1-1-2020

DESIGNED - SMR	EXAMINED	DATE - MARCH 9, 2020
CHECKED - VHV	<i>Timothy A. Daburdell</i> ENGINEER OF STRUCTURAL SERVICES	REVISED -
DRAWN - daburdell	PASSED	REVISED -
CHECKED - SMR VHV	<i>Carl Ringer</i> ENGINEER OF BRIDGES AND STRUCTURES	

STATE OF ILLINOIS
 DEPARTMENT OF TRANSPORTATION

BAR SPLICER ASSEMBLY AND MECHANICAL SPLICER DETAILS
 SN 082-0258

SHEET NO. 6 OF 6 SHEETS

F.A.U. RTE.	SECTION	COUNTY	TOTAL SHEETS	SHEET NO.
9162	147-BR-3	ST. CLAIR	12	10
CONTRACT NO. 76N21				
ILLINOIS		FED. AID PROJECT		

