

085

F.A.P. RTE.	SECTION	COUNTY	TOTAL SHEETS	SHEET NO.
829	105RS-2	MONROE	7	1
		ILLINOIS	CONTRACT NO. 76N25	

STATE OF ILLINOIS  
DEPARTMENT OF TRANSPORTATION

# PROPOSED HIGHWAY PLANS

FAP ROUTE 829 (IL 156)  
SECTION 105RS-2  
RESURFACING - SMART - CM  
BRIDGE APPROACH PAVEMENTS AT  
PRAIRIE DU LONG CREEK RD  
MONROE COUNTY

C-98-065-20

FOR INDEX OF SHEETS, SEE SHEET NO. 2

### TRAFFIC DATA

FUNCTIONAL CLASSIFICATION: MINOR ARTERIAL

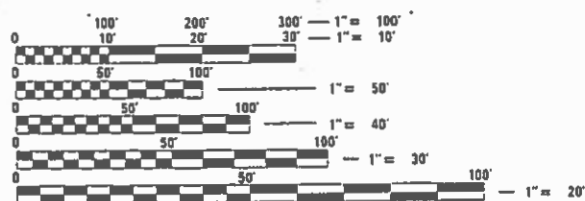
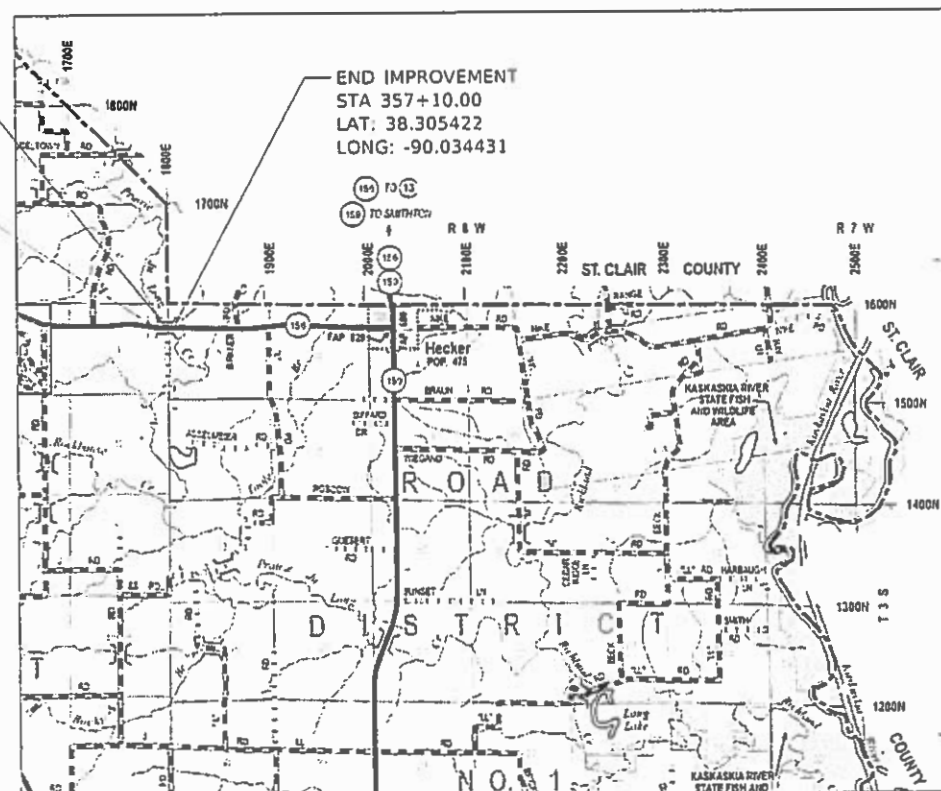
IL 156  
2019 ADT (ACTUAL): 2300  
2020 ADT (ESTIMATED): 2350  
2040 ADT (ESTIMATED): 3100  
SU: 4.3%  
MU: 6.5%



STRUCTURE OMISSION  
STA 350+84.50 TO STA 354+85.00

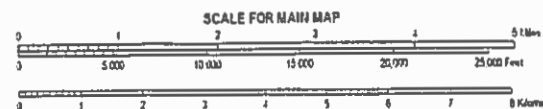
BEGIN IMPROVEMENT  
STA 348+40.00  
LAT: 38.305486  
LONG: -90.03759

END IMPROVEMENT  
STA 357+10.00  
LAT: 38.305422  
LONG: -90.034431



FULL SIZE PLANS HAVE BEEN PREPARED USING STANDARD ENGINEERING SCALES. REDUCED SIZED PLANS WILL NOT CONFORM TO STANDARD SCALES. IN MAKING MEASUREMENTS ON REDUCED PLANS, THE ABOVE SCALES MAY BE USED.

J.U.L.I.E.  
JOINT UTILITY LOCATION INFORMATION FOR EXCAVATORS  
1-800-892-0123  
OR 811



GROSS LENGTH = 870.00 FT. = 0.165 MILE  
NET LENGTH = 469.50 FT. = 0.089 MILE

PROJECT ENGINEER TIM PADGETT 618-346-3325  
PROJECT MANAGER DREW RUHOLL 618-346-3454

CONTRACT NO. 76N25

STATE OF ILLINOIS  
DEPARTMENT OF TRANSPORTATION

SUBMITTED Jan 21 20 20  
Kaith Roberts  
REGIONAL ENGINEER

March 20 20  
E.A. Etk  
ENGINEER OF DESIGN AND ENVIRONMENT

March 20 20  
Arman, Jun 13  
DIRECTOR OF HIGHWAYS PROJECT IMPLEMENTATION

PRINTED BY THE AUTHORITY  
OF THE STATE OF ILLINOIS

## INDEX OF SHEETS

1	COVER SHEET
2	INDEX OF SHEETS, HIGHWAY STANDARDS, GENERAL NOTES, & COMMITMENTS
3	SUMMARY OF QUANTITIES
4	TYPICAL SECTIONS
5	SCHEDULE OF QUANTITIES
6	LOCATION MAP
7	RESURFACING DETAILS

## GENERAL NOTES:

- ① UTILITIES KNOWN TO HAVE FACILITIES WITHIN THE PROJECT AREA ARE AS FOLLOWS:

	AERIAL	BURIED
*AT&T CORPORATION (COMMUNICATIONS)	X	X
*FOUNTAIN WATER DISTRICT (WATER)		X
*FRONTIER COMMUNICATIONS (COMMUNICATIONS)	X	X
*MONROE COUNTY ELECTRIC CO-OPERATIVE, INC. (ELECTRIC)	X	X

MEMBERS OF J.U.L.I.E. (800) 892-0123 ARE INDICATED BY \*. NON-J.U.L.I.E. MEMBERS MUST BE NOTIFIED INDIVIDUALLY.

- ② THE CONTRACTOR AND THE ENGINEER SHALL BE AWARE THAT NO SURVEY WAS PERFORMED FOR THIS PROJECT. THE STATIONING, TOPOGRAPHY, AND QUANTITIES SHOWN IN THE PLANS WERE CREATED USING MICROFILM AND FIELD MEASUREMENTS. ALL SHALL BE ASSUMED TO BE APPROXIMATE. THE CONTRACTOR SHALL VERIFY DIMENSIONS AND CONDITIONS IN THE FIELD PRIOR TO CONSTRUCTION AND ORDERING OF MATERIALS.
- ③ THE THICKNESS OF HOT-MIX-ASPHALT SURFACE MIXTURES SHOWN ON THE PLANS IS THE NOMINAL THICKNESS. DEVIATIONS MAY OCCUR DUE TO IRREGULARITIES IN THE EXISTING SURFACE OR BASE ON WHICH THE BITUMINOUS MIXTURE IS PLACED.
- ④ AN ESTIMATED QUANTITY OF 118 TONS OF CUTTINGS FROM HMA REMOVAL IS ANTICIPATED.
- ⑤ NO OVERNIGHT LANE CLOSURES WILL BE PERMITTED.
- ⑥ THE PROPOSED PAVEMENT MARKINGS SHALL MATCH THE LOCATIONS OF THE EXISTING PAVEMENT MARKINGS, AS DIRECTED BY THE ENGINEER.
- ⑦ IF THE SURFACE REMOVAL ON THIS PROJECT PRODUCES A MILLED EDGE ANYWHERE GREATER THAN 1.5 INCHES BETWEEN ADJACENT OPEN LANES OF TRAFFIC, ONE OF THE FOLLOWING SHALL APPLY:  
 -THE CONTRACTOR SHALL ORGANIZE THE WORK TO AVOID THE MILLED EDGE.  
 -THE CONTRACTOR SHALL CONSTRUCT A TEMPORARY HOT MIX ASPHALT WEDGE ALONG THE MILLED EDGE.  
 -THE CONTRACTOR SHALL CONSTRUCT A MILLED SLOPED EDGE (MINIMUM 1:3) ALONG THE MILLED EDGE.

THE COST OF THIS WORK SHALL BE INCLUDED IN THE COST PER SQUARE YARD FOR HOT-MIX ASPHALT SURFACE REMOVAL OF THE DEPTH SPECIFIED.

## HIGHWAY STANDARDS

000001-07	STANDARD SYMBOLS, ABBREVIATIONS AND PATTERNS
001006	DECIMAL OF AN INCH AND OF A FOOT
701001-02	OFF-RD OPEATIONS, 2L, 2W, MORE THAN 15' AWAY
701006-05	OFF-RD OPERATIONS, 2L, 2W, 15' TO 24" FROM PAVEMENT EDGE
701011-04	OFF-RD MOVING OPERATIONS, 2L, 2W DAY ONLY
701201-05	LANE CLOSURE, 2L, 2W, DAY ONLY, FOR SPEEDS $\geq$ 45 MPH
701301-04	LANE CLOSURE, 2L, 2W, SHORT TIME OPERATIONS
701306-04	LANE CLOSURE, 2L, 2W, SLOW MOVING OPERATIONS DAY ONLY, FOR SPEEDS $\geq$ 45 MPH
701311-03	LANE CLOSURE, 2L, 2W, MOVING OPERATIONS - DAY ONLY
701901-08	TRAFFIC CONTROL DEVICES
780001-05	TYPICAL PAVEMENT MARKINGS
781001-04	TYPICAL APPLICATIONS RAISED REFLECTIVE PAVEMENT MARKERS

## MIXTURE REQUIREMENTS

THE FOLLOWING MIXTURE REQUIREMENTS ARE APPLICABLE FOR THIS PROJECT:

ROUTE	FAP 829 (IL 156)
SECTION	105RS-2
COUNTY	MONROE
CONTRACT	76N25

DESCRIPTION	SMART RESURFACING - CM - ALONG IL 156 FROM BRIDGE APPROACH PAVEMENTS AT PRAIRIE DU LONG CREEK RD
-------------	--

ADT (CONSTRUCTION YR.):	2300
MU%	6.5
SU%	4.3
20 YR. ESAL'S	0.93

MIXTURE USE	SURFACE
AC/PG	PG 64-22
RAP % (MAX)	SEE SPECIAL PROVISION
DESIGN AIR VOIDS	4.0% @ Ndes=70
MIX COMPOSITION (Gradation)	IL 9.5
FRICITION AGG	MIXTURE "D"
QUALITY MGMT PROGRAM	QC/QA

PLAN QUANTITIES FOR BITUMINOUS CONCRETE SURFACE COURSE ITEMS ARE CALCULATED USING A UNIT WEIGHT OF 112 LB/SQ YD/IN

## COMMITMENTS

NONE

STATE OF ILLINOIS  
DEPARTMENT OF TRANSPORTATION

INDEX OF SHEETS, HIGHWAY STANDARDS, GENERAL NOTES  
& COMMITMENTS

SCALE: SHEET 1 OF 1 SHEETS STA. TO STA.

F.A.P. RTE.	SECTION	COUNTY	TOTAL SHEETS	SHEET NO.
829	105RS-2	MONROE	7	2
			CONTRACT NO. 76N25	
		ILLINOIS	FED. AID PROJECT	

CONSTR. CODE

CODE NO.	ITEM	UNIT	TOTAL QUANTITY	CONSTR. CODE	
				ROADWAY	
				0005	RURAL
40600290	BITUMINOUS MATERIALS (TACK COAT)	POUND	634	634	
40600982	HOT-MIX ASPHALT SURFACE REMOVAL - BUTT JOINT	SQ YD	60	60	
40600990	TEMPORARY RAMP	SQ YD	60	60	
40604062	HOT-MIX ASPHALT SURFACE COURSE, IL-9.5, MIX "D", N70	TON	118	118	
44000155	HOT-MIX ASPHALT SURFACE REMOVAL, 1 1/2"	SQ YD	1349	1349	
67100100	MOBILIZATION	L SUM	1	1	
70100450	TRAFFIC CONTROL AND PROTECTION, STANDARD 701201	L SUM	1	1	
70100460	TRAFFIC CONTROL AND PROTECTION, STANDARD 701306	L SUM	1	1	
70300100	SHORT TERM PAVEMENT MARKING	FOOT	84	84	
70300150	SHORT TERM PAVEMENT MARKING REMOVAL	SQ FT	14	14	
70300220	TEMPORARY PAVEMENT MARKING - LINE 4"	FOOT	1057	1057	
* 78000200	THERMOPLASTIC PAVEMENT MARKING - LINE 4"	FOOT	1057	1057	
* 78100100	RAISED REFLECTIVE PAVEMENT MARKER	EACH	6	6	
78300200	RAISED REFLECTIVE PAVEMENT MARKER REMOVAL	EACH	6	6	

CONSTR. CODE

CODE NO.	ITEM	UNIT	TOTAL QUANTITY	CONSTR. CODE	
				ROADWAY	
				0005	RURAL
X7030005	TEMPORARY PAVEMENT MARKING REMOVAL	SQ FT	352	352	

\* SPECIALTY ITEM

MODEL: Default  
 FILE: Model\_Planplanroom.dwg  
 I:\projects\76N25\CADD\Drawings\DOT Office\Drawings\DOT Office\Drawings\76N25-Plan-500.dgn

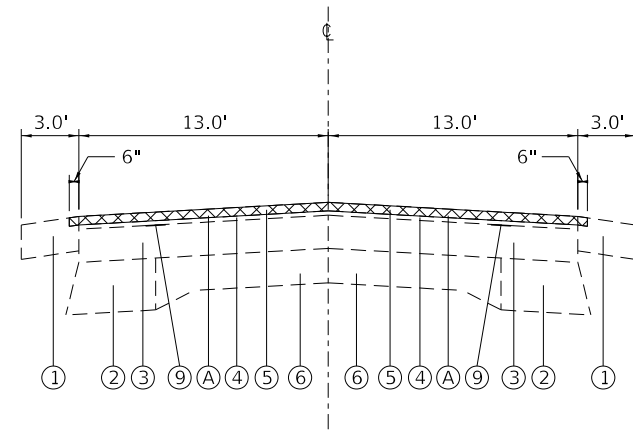
USER NAME = ruholids	DESIGNED -	REVISED -
	DRAWN -	REVISED -
PLOT SCALE = 100.0000' / in.	CHECKED -	REVISED -
PLOT DATE = 1/16/2020	DATE -	REVISED -

**STATE OF ILLINOIS  
DEPARTMENT OF TRANSPORTATION**

**SUMMARY OF QUANTITIES**

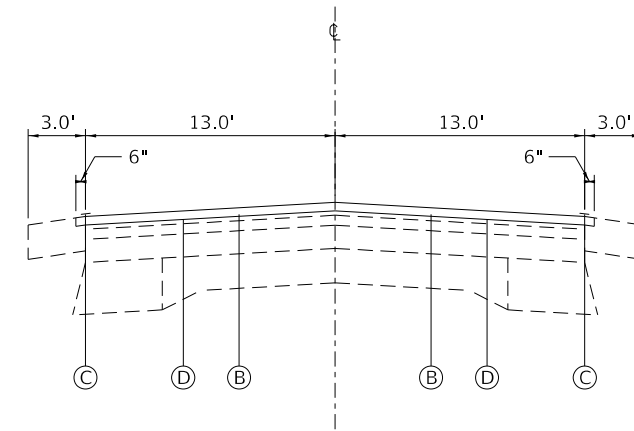
SCALE: SHEET 1 OF 1 SHEETS STA. TO STA.

F.A.P. RTE.	SECTION	COUNTY	TOTAL SHEETS	SHEET NO.
829	105RS-2	MONROE	7	3
CONTRACT NO. 76N25				
ILLINOIS FED. AID PROJECT				



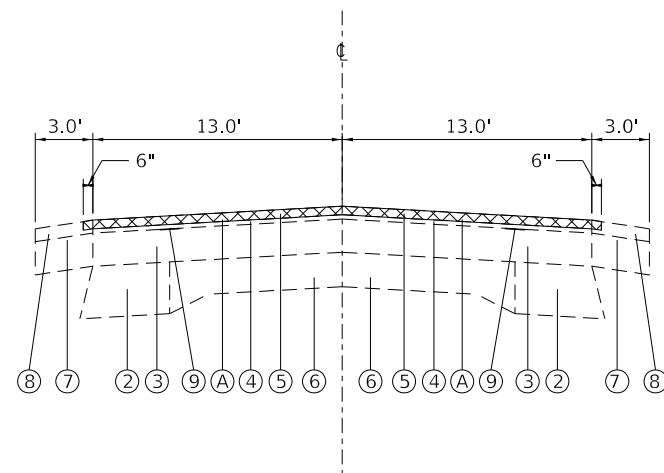
**EXISTING TYPICAL SECTION**

STA. 348+40.00 TO STA. 348+95.46  
 STA. 356+66.04 TO STA. 357+10.00



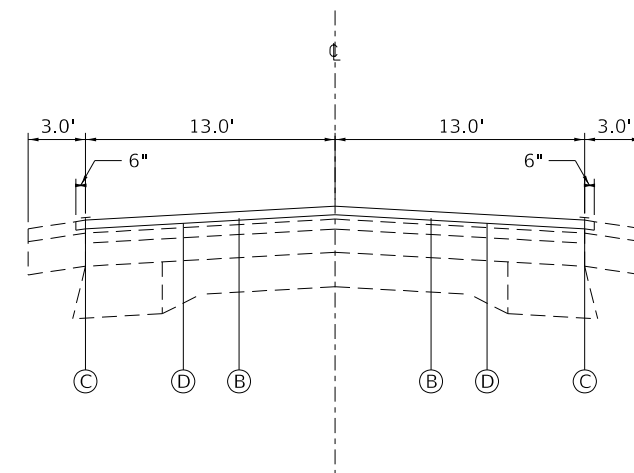
**PROPOSED TYPICAL SECTION**

STA. 348+40.00 TO STA. 348+95.46  
 STA. 356+66.04 TO STA. 357+10.00



**EXISTING TYPICAL SECTION**

STA. 348+95.46 TO STA. 350+84.50  
 STA. 350+84.50 TO STA. 354+85.00 (BRIDGE OMISSION)  
 STA. 354+85.00 TO STA. 356+66.04



**PROPOSED TYPICAL SECTION**

STA. 348+95.46 TO STA. 350+84.50  
 STA. 350+84.50 TO STA. 354+85.00 (BRIDGE OMISSION)  
 STA. 354+85.00 TO STA. 356+66.04

**LEGEND**

- ① EXISTING BITUMINOS SHOULDERS 6"
- ② EXISTING BITUMINOUS PAVEMENT WIDENING 9"
- ③ EXISTING BITUMINOUS OVERLAYS ± 4"
- ④ EXISTING LEVELING BINDER (MACHING METHOD) MIXTURE C, TYPE 2, 3/4"
- ⑤ EXISTING BITUMINOUS CONCRETE SURFACE COURSE, MIXTURE D, CLASS I, TYPE 2, 1 1/2"
- ⑥ EXISTING P.C.C. PAVEMENT, 9"-6"-9"
- ⑦ EXISTING BITUMINOUS CONCRETE BASE COURSE, WIDENING 8"
- ⑧ EXISTING BITUMINOUS CONCRETE SURFACE COURSE, MIXTURE D, CLASS I, TYPE 2, VAR. THICKNESS
- ⑨ EXISTING STRIP REFLECTIVE CRACK CONTROL (9' FROM CL)
- (A) PROPOSED HMA SURFACE REMOVAL 1 1/2" [Hatched pattern]
- (B) PROPOSED HMA SURFACE COURSE, IL 9.5, MIX "D", N70, 1 1/2"
- (C) PROPOSED THERMOPLASTIC PAVEMENT MARKING - LINE 4" (EDGELINES)
- (D) PROPOSED BITUMINOUS MATERIALS (TACK COAT)

MODEL: Default  
 FILE: \\nrcs-pix\uplanroom\dat\illinois.gov\PWIDOT\Documents\DOT\_Offices\Ibirtct @projects\076N25\CADD\data\CAD\pieces\076N25-shc\typical.dgn

USER NAME = ruholids	DESIGNED -	REVISED -
	DRAWN -	REVISED -
PLOT SCALE = 100.0000' / in.	CHECKED -	REVISED -
PLOT DATE = 1/16/2020	DATE -	REVISED -

**STATE OF ILLINOIS  
 DEPARTMENT OF TRANSPORTATION**

**TYPICAL SECTIONS**

SCALE: SHEET 1 OF 1 SHEETS STA. TO STA.

F.A.P. RTE.	SECTION	COUNTY	TOTAL SHEETS	SHEET NO.
829	105RS-2	MONROE	7	4
			CONTRACT NO. 76N25	
			ILLINOIS FED. AID PROJECT	

MAINLINE RESURFACING SCHEDULE					
LOCATION			HMA SURFACE REMOVAL 1.5"	BITUMINOUS MATERIALS (TACK COAT)	HMA SURFACE COURSE, IL 9.5, MIX "D", N70
STA	TO	STA	(SQ YD)	(POUND)	(TONS)
348+40.00	TO	350+84.50	703.5	330.1	61.6
350+84.50	TO	354+85.00	STRUCTURE OMISSION		
354+85.00	TO	357+10.00	645.0	303.8	56.7
SUBTOTAL			1348.5	633.9	118.3
TOTAL			1349	634	118

PAVEMENT MARKING SCHEDULE							
LOCATION			THERMOPLASTIC / TEMPORARY PAVEMENT		TEMPORARY PAVEMENT MARKING REMOVAL	RAISED REFLECTIVE PAVEMENT MARKER	RAISED REFLECTIVE PAVEMENT MARKER REMOVAL
			LINE - 4"				
STA	TO	STA	SOLID WHITE (FT)	SKIP-DASH YELLOW (FT)	(SQ FT)	(EACH)	(EACH)
348+40.00	TO	350+84.50	490	61	183.7	3	3
350+84.50	TO	354+85.00	STRUCTURE OMISSION				
354+85.00	TO	357+10.00	450	56	168.7	3	3
SUBTOTAL			940	117	352.4	6	6
TOTAL			1057		352	6	6

BUTT JOINT AND TEMPORARY RAMP SCHEDULE					
LOCATION		LENGTH	WIDTH	HMA SURFACE REMOVAL - BUTT JOINT	TEMPORARY RAMP (1.5")
STA	NAME	(FT)	(FT)	(SQ YD)	(SQ YD)
348+40.00	IL 156	5	27	15	15
350+84.50	IL 156	5	27	15	15
354+85.00	IL 156	5	27	15	15
357+10.00	IL 156	5	27	15	15
SUBTOTAL				60.0	60.0
TOTAL				60	60

SHORT TERM PAVEMENT MARKING SCHEDULE <sup>1</sup>				
LOCATION			LINE - 4" SKIP-DASH YELLOW	SHORT TERM PAVEMENT MARKING REMOVAL
STA.	TO	STA.	(FT)	(SQ FT)
348+40.00	TO	350+84.50	44	7.3
350+84.50	TO	354+85.00	STRUCTURE OMISSION	
354+85.00	TO	357+10.00	40	6.7
SUBTOTAL			84	14.0
TOTAL			84	14

<sup>1</sup> 2 APPLICATIONS OF THE YELLOW SKIP-DASH WERE ASSUMED. ONLY THE REMOVAL OF THE FINAL APPLICATION WILL BE PAID FOR.

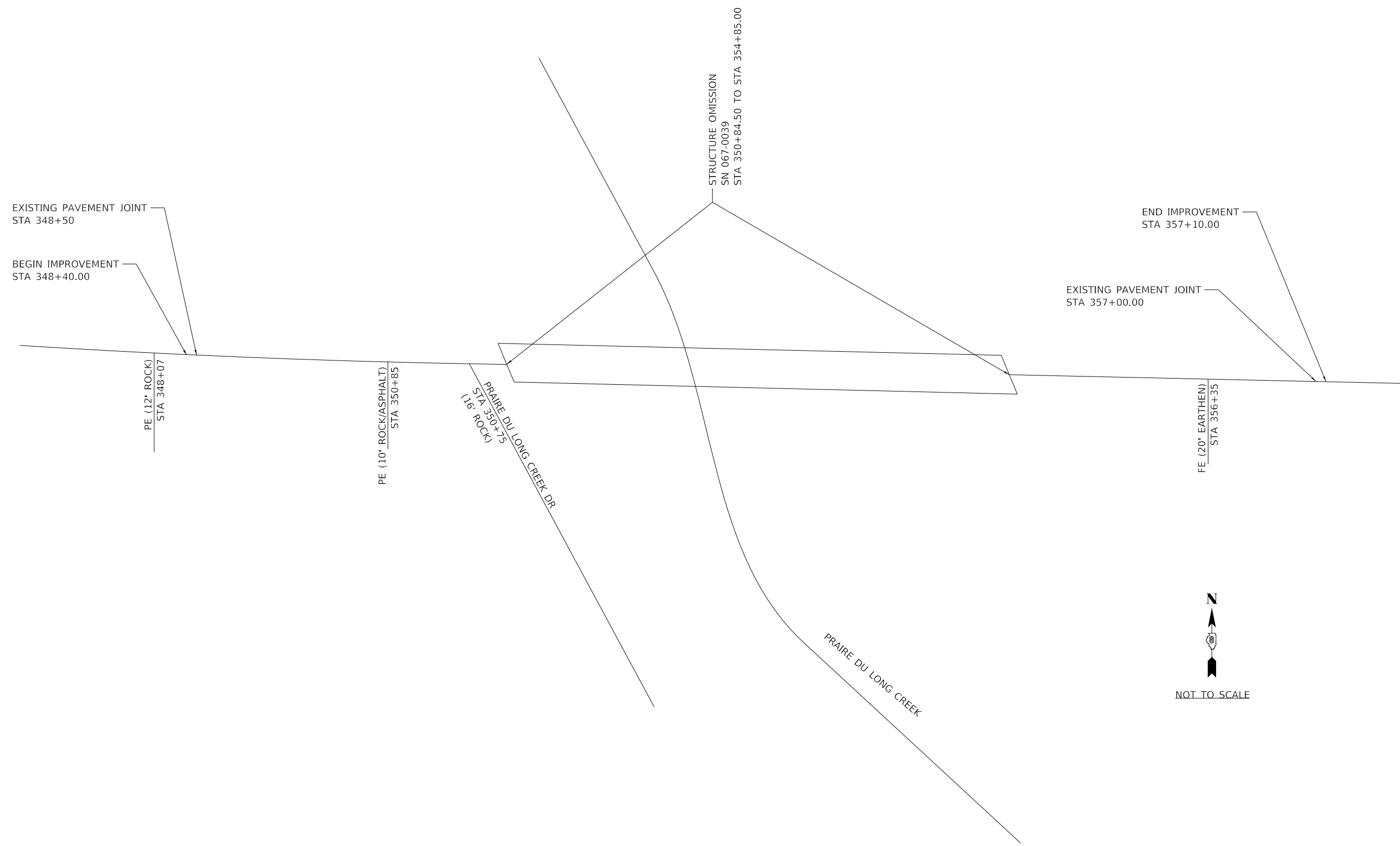
MODEL: Default  
 FILE: \\hpc-pix\pub\hpcroom\data\illinois.gov\PWIDOT\Documents\DOT\_Offices\Illin\ct @ Projects\076N25\CADD\data\CAD\hpcres\076N25-shc-schedule.dgn

USER NAME = ruholids	DESIGNED -	REVISED -
	DRAWN -	REVISED -
PLOT SCALE = 100.0000' / in.	CHECKED -	REVISED -
PLOT DATE = 1/16/2020	DATE -	REVISED -

**STATE OF ILLINOIS  
DEPARTMENT OF TRANSPORTATION**

SCHEDULE OF QUANTITIES				
SCALE:	SHEET 1	OF 1	SHEETS	STA. TO STA.

F.A.P. RTE.	SECTION	COUNTY	TOTAL SHEETS	SHEET NO.
829	105RS-2	MONROE	7	5
CONTRACT NO. 76N25				
ILLINOIS FED. AID PROJECT				



MODEL: Default  
 FILE: \\nrcs-pix\pub\room.mda\illinois.gov\PWIDOT\Documents\DOT\_Offices\District 8\Projects\076N25\CADD\ata\CAD\pieces\076N25-shc-detailed.dgn

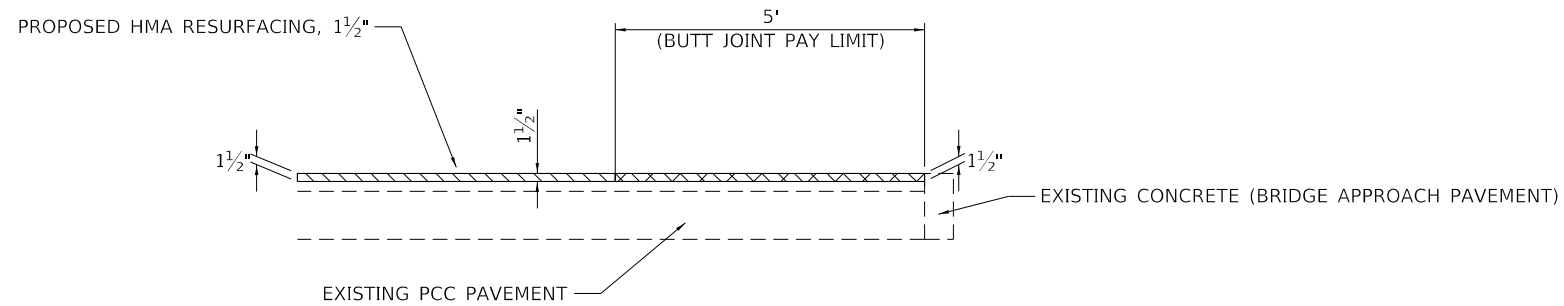
USER NAME = ruholids	DESIGNED -	REVISED -
	DRAWN -	REVISED -
PLOT SCALE = 100,0000' / in.	CHECKED -	REVISED -
PLOT DATE = 1/16/2020	DATE -	REVISED -

**STATE OF ILLINOIS**  
**DEPARTMENT OF TRANSPORTATION**

**LOCATION MAP**

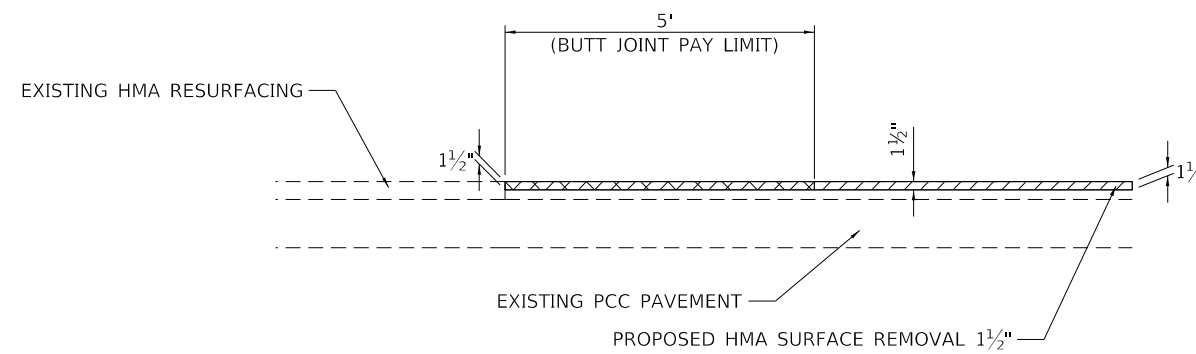
SCALE: N.T.S.    SHEET 1    OF 1    SHEETS    STA.    TO STA.

F.A.P. RTE.	SECTION	COUNTY	TOTAL SHEETS	SHEET NO.
829	105RS-2	MONROE	7	6
CONTRACT NO. 76N25				
ILLINOIS		FED. AID PROJECT		



**STRUCTURE OMISSION BUTT JOINT DETAIL**

ELEVATION VIEW



**BEGIN/END BUTT JOINT DETAIL**

ELEVATION VIEW

MODEL: Default  
 FILE: \\nrcs-pis\uplanroom\dat\illinois.gov\PIWIDOT\Documents\DOT\_Offices\District 8\Projects\076N25\CADD\ata\CAD\pieces\076N25-shc-detail.dgn

USER NAME = ruholids	DESIGNED -	REVISED -
	DRAWN -	REVISED -
PLOT SCALE = 100.0000' / in.	CHECKED -	REVISED -
PLOT DATE = 1/16/2020	DATE -	REVISED -

**STATE OF ILLINOIS  
DEPARTMENT OF TRANSPORTATION**

**RESURFACING DETAILS**

SCALE: N.T.S. SHEET 1 OF 1 SHEETS STA. TO STA.

F.A.P. RTE.	SECTION	COUNTY	TOTAL SHEETS	SHEET NO.
829	105RS-2	MONROE	7	7
CONTRACT NO. 76N25				
ILLINOIS FED. AID PROJECT				