

STATE OF ILLINOIS
DEPARTMENT OF TRANSPORTATION

FAP RYE.	SECTION	COUNTY	TOTAL SHEETS	SHEET NO.
327	14-14HB-2-BP-1	CLINTON	24	1
		ILLINOIS	CONTRACT NO. 76N46	

090

FOR INDEX OF SHEETS, SEE SHEET NO. 2

PROPOSED HIGHWAY PLANS

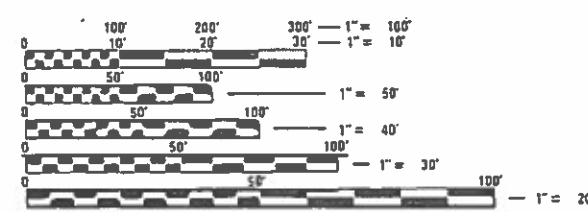
FAP ROUTE 327 (US 50)
SECTION 14-14HB-2-BP-1
PROJECT NHPP-9E2E(410)
BRIDGE PAINTING
CLINTON COUNTY

C-98-092-20

ADT

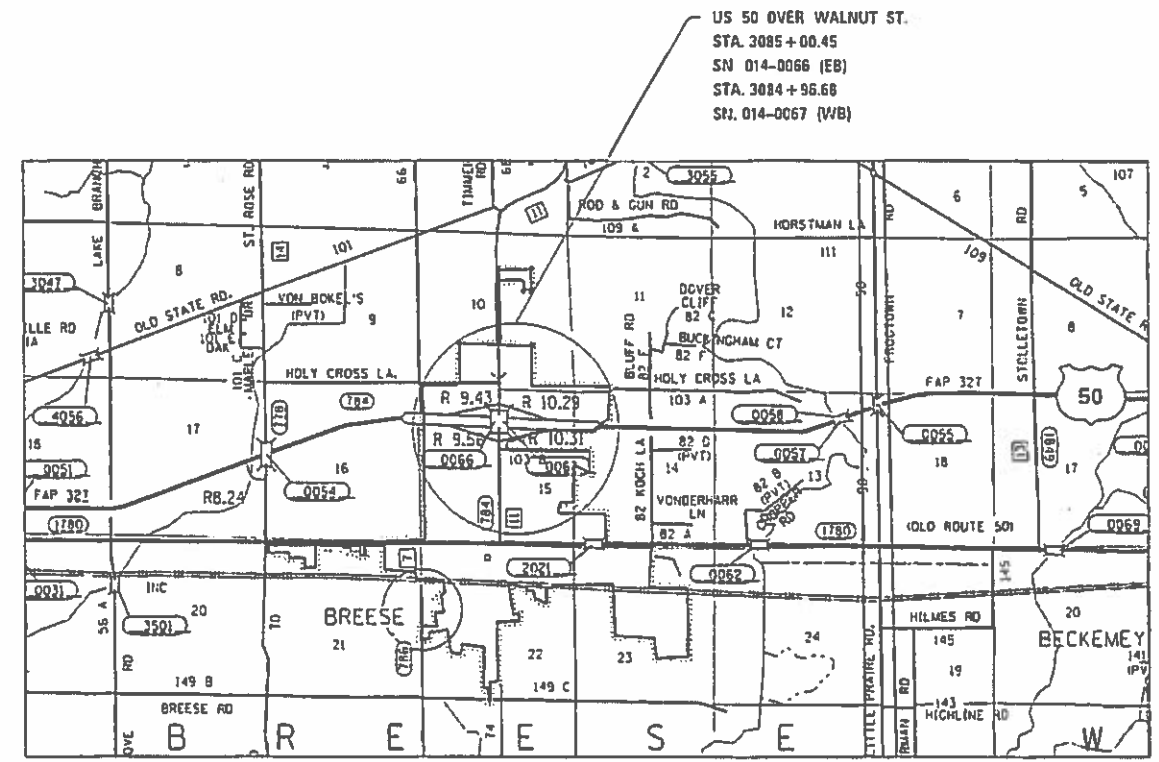
IL 50	
014-0066	4700(2019)
%SU	13.3
%MU	5.3
014-0067	4700(2019)
%SU	13.3
%MU	5.3

FUNCTIONAL CLASSIFICATION:
OTHER PRINCIPAL ARTERIAL



FULL SIZE PLANS HAVE BEEN PREPARED USING STANDARD ENGINEERING SCALES. REDUCED SIZED PLANS WILL NOT CONFORM TO STANDARD SCALES. IN MAKING MEASUREMENTS ON REDUCED PLANS, THE ABOVE SCALES MAY BE USED.

J.U.L.I.E.
JOINT UTILITY LOCATION INFORMATION FOR EXCAVATION
1-800-892-0123
OR 811



R4W

NOT TO SCALE

PROJECT ENGINEER HERVE GELIN 618-346-3179
PROJECT MANAGER ERIC NICHOLSON 618-346-3186

NOTE: NET LENGTH OF PROJECT = 0.0204 MILES
GROSS LENGTH = 107.58 FT. (0.0204 MI.)

STATE OF ILLINOIS
DEPARTMENT OF TRANSPORTATION

SUBMITTED Dec 13 2019
Keith Holata
REGIONAL ENGINEER

March 20 2020
Eric E. K...
ENGINEER OF DESIGN AND ENVIRONMENT

March 29 2020
Asmaul Jun
DIRECTOR OF HIGHWAYS PROJECT IMPLEMENTATION 13

PRINTED BY THE AUTHORITY
OF THE STATE OF ILLINOIS

CONTRACT NO. 76N46

CODE NO.	ITEM	UNIT	TOTAL QUANTITY	CONSTRUCTION CODE	
				80% FEDERAL 20% STATE	
				BRIDGE 0047 014-0066	BRIDGE 0047 014-0067
31200110	STABILIZED SUBBASE 6"	SQ YD	104	56	48
42000300	PORTLAND CEMENT CONCRETE PAVEMENT 8"	SQ YD	88	48	40
44000500	COMBINATION CURB & GUTTER REMOVAL	FOOT	329	164	165
44003100	MEDIAN REMOVAL	SQ FT	935	502	433
60622400	CONCRETE MEDIAN, TYPE SM-6.06	SQ FT	145	68	77
67100100	MOBILIZATION	L SUM	1	0.5	0.5
70100450	TRAFFIC CONTROL AND PROTECTION, STANDARD 701201	L SUM	1	0.5	0.5
70100455	TRAFFIC CONTROL AND PROTECTION, STANDARD 701206	L SUM	1	0.5	0.5
70107025	CHANGEABLE MESSAGE SIGN	CAL DA	60	30	30
* 72400600	RELOCATE SIGN PANEL ASSEMBLY - TYPE B	EACH	4	2	2
* 78001100	PAINT PAVEMENT MARKING, LETTERS AND SYMBOLS	SQ FT	62.4	31.2	31.2
* 78001110	PAINT PAVEMENT MARKING - LINE 4"	FOOT	300	150	150
* 78001140	PAINT PAVEMENT MARKING - LINE 8"	FOOT	360	180	180
* 78001180	PAINT PAVEMENT MARKING - LINE 24"	FOOT	72	36	36
X7010210	TRAFFIC CONTROL AND PROTECTION, STANDARD 701411 (SPECIAL)	EACH	4	2	2
X7010218	TRAFFIC CONTROL AND PROTECTION, (SPECIAL)	EACH	2	1	1
Z0007101	CONTAINMENT AND DISPOSAL OF LEAD PAINT CLEANING RESIDUES NO. 1	L SUM	1	1	
Z0007102	CONTAINMENT AND DISPOSAL OF LEAD PAINT CLEANING RESIDUES NO. 2	L SUM	1		1
Z0010501	CLEANING AND PAINTING STEEL BRIDGE NO. 1	L SUM	1	1	
Z0010502	CLEANING AND PAINTING STEEL BRIDGE NO. 2	L SUM	1		1

* SPECIALTY ITEM

REV. - MS

MODEL: D:\dwg FILE NAME: p:\temproom\get_illinoi\pov_PVPD\DTI\Document\31001_001\310010218.dwg
 PLOT DATE: 12/22/2019

USER NAME = micholsonew	DESIGNED =	REVISED =
PLOT SCALE = 100 0000 / in.	DRAWN =	REVISED =
PLOT DATE = 12/22/2019	CHECKED =	REVISED =
	DATE =	REVISED =

STATE OF ILLINOIS
DEPARTMENT OF TRANSPORTATION

SUMMARY OF QUANTITIES

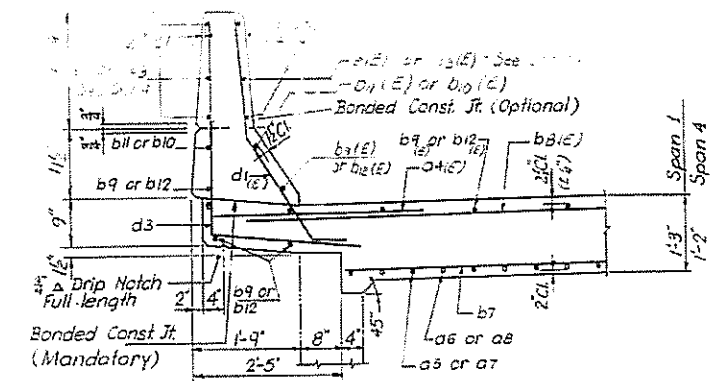
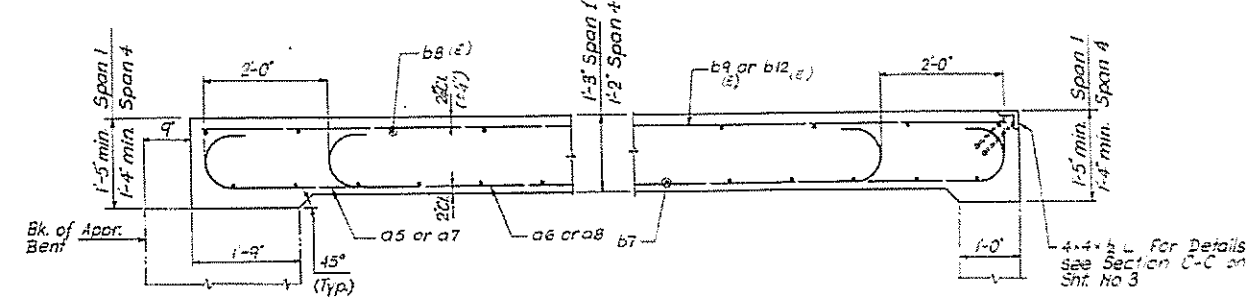
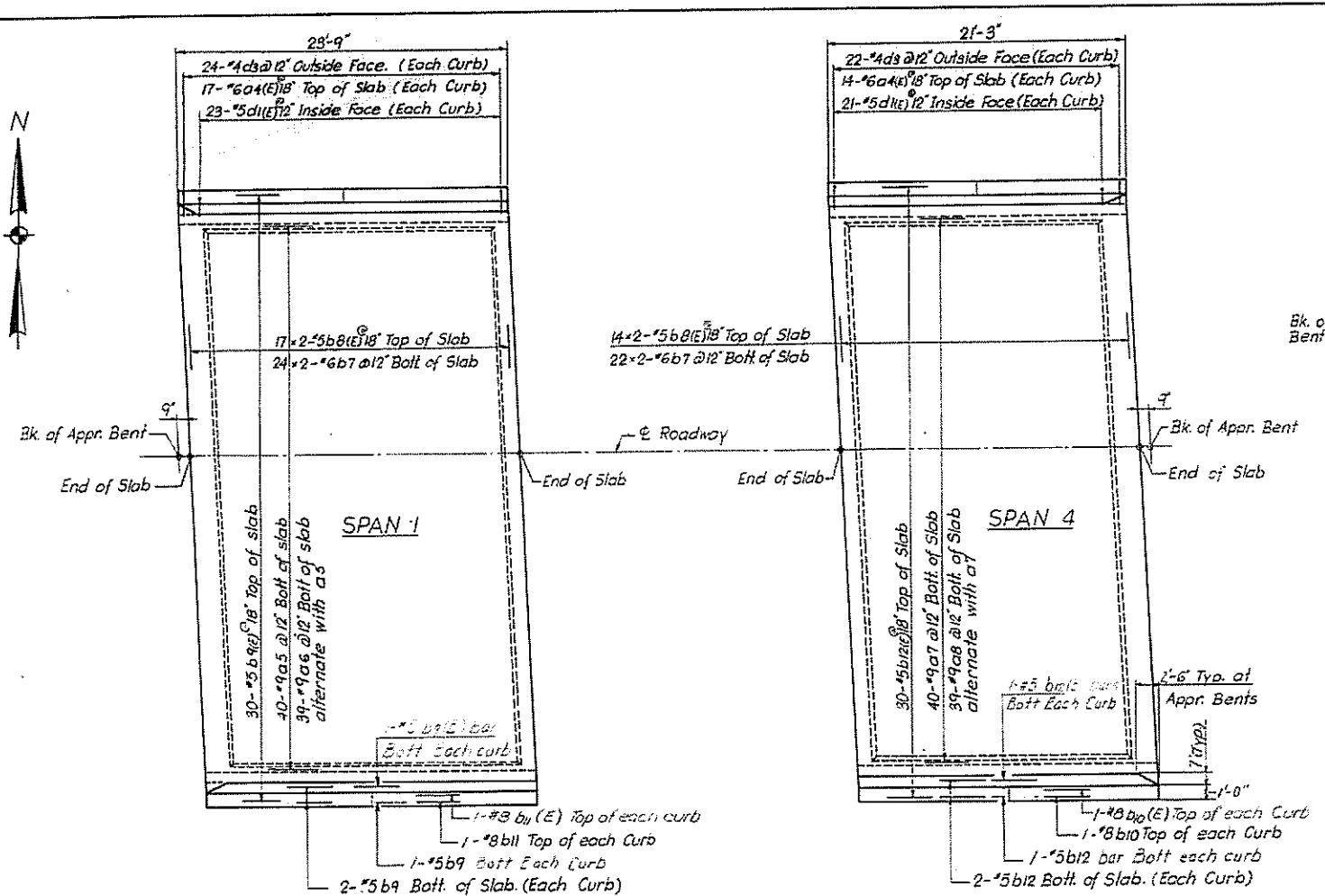
SCALE: NA SHEET 1 OF 3 SHEETS STA. TO STA.

FAP RTE	SECTION	COUNTY	TOTAL SHEETS	SHEET NO.
327	14-14HB-2-BP-1	CLINTON	24	3
CONTRACT NO. 76N46				
ILLINOIS FED. AID PROJECT				

		MEDIAN REMOVAL	COMB. CURB & GUTTER REMOVAL	PCC PMNT 8"	STABILIZED SUBBASE 6"	CONC. MEDIAN TYPE SM-6.06	RELOCATE SIGN PANEL ASSEMBLY TYPE B
		(SQ FT)	(FT)	(SQ YD)	(SQ YD)	(SQ FT)	(EACH)
NORTH	ISLAND	340.8	79.6	37.87	37.87		1
	MEDIAN	57.67	33.68	2.60	6.41	33.48	
	MEDIAN	103.05	50.9	7.69	11.45	33.97	1
	SUB TOT	501.52	164.18	48.15	55.72	67.45	2
SOUTH	ISLAND	218.06	63.92	24.23	24.23		1
	MEDIAN	83.54	49.17	6.25	9.28	27.28	
	MEDIAN	131.74	51.64	9.11	14.64	49.77	1
	SUB TOT	433.34	164.73	39.59	48.15	77.05	2
TOTAL		934.86	328.91	87.74	103.87	144.5	4

	PAINT PAVEME NT MARKING - LINE 4"	PAINT PAVEMENT MARKING - LINE 8"	PAINT PAVEMEN T MARKING - LINE 24"	PAINT PVMT MARKING LETTERS & SYMBOLS
	(FT)	(FT)	(FT)	(SQ FT)
ISLAND		179.74	36	
MEDIAN	150			31.2
ISLAND		179.74	36	
MEDIAN	150			31.2
TOTAL	300	359.48	72	62.4

ROUTE NO.	SECTION	COUNTY	TOTAL SHEETS	SHEET NO.
F.A.- 409	14-14B-1	CLINTON	57	25
FED. ROAD DIV. NO. 4		ILLINOIS PROJECT		



BAR LIST
(For Eastbound Structure only)

Bar	No	Size	Length	Shape
a4(E)	62	#6	4'-0"	—
a5	40	#9	25'-11"	U
a6	39	#9	21'-11"	U
a7	40	#9	23'-5"	U
a8	39	#9	14'-5"	U
b7	42	#6	—	—
b8(E)	62	#5	21'-11"	—
b9	6	#6	23'-5"	—
b9(E)	32	#6	23'-5"	—
b10	6	#8	20'-11"	—
b11	6	#8	23'-5"	—
b12	6	#8	20'-11"	—
d1(E)	32	#5	20'-11"	—
d3	42	#4	6'-2"	L
d1(E)	88	#5	3'-7"	U
b10(E)	2	#8	20'-11"	—
b11(E)	2	#8	23'-5"	—

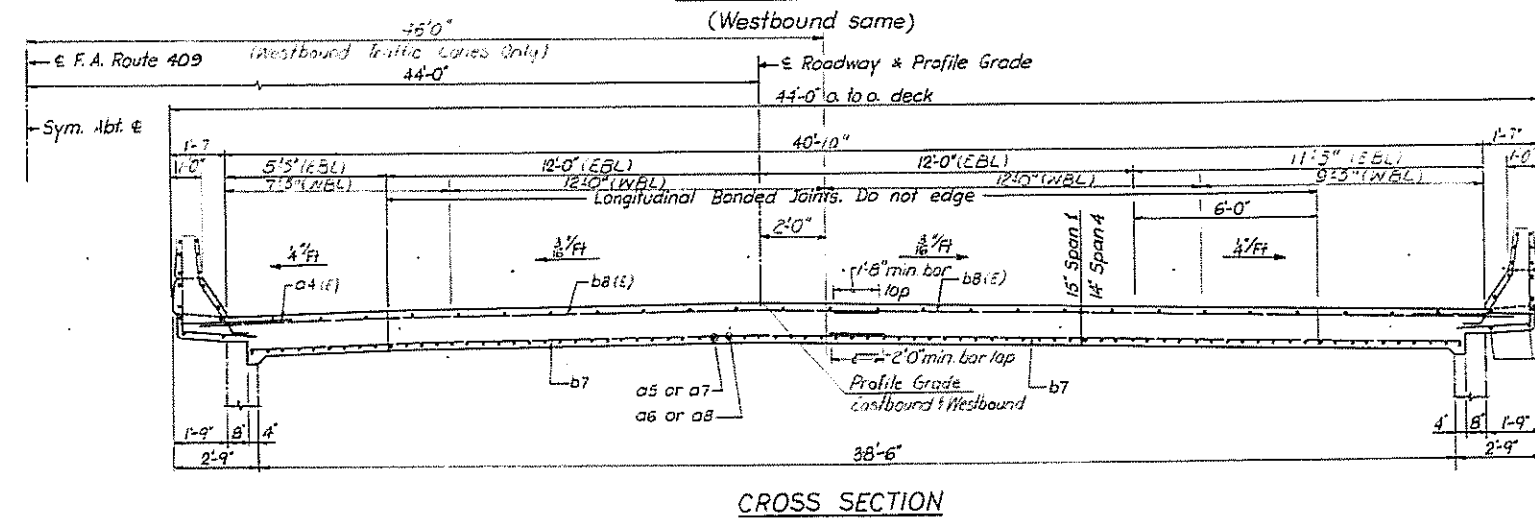
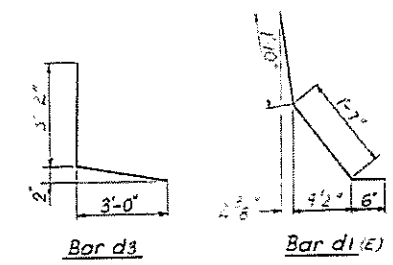
BILL OF MATERIAL
(For East and Westbound Structures)

Item	Unit	Total
Class X Concrete	Cu. Yds.	180.0
Reinforcement Bars	Pound	31,710
Protective Coat	Sq. Yds.	326
Reinforcement Bars (Epoxy Coated)	Pound	711.0

NOTES: The quantities of Reinforcement Bars and Class X Concrete in parapets are billed separately on Sht No 4 and are not included above.
For Expansion Guard detail see Sht. No 3.
All exposed edges shall have 3/4 chamfer.
All clearances shall be 15' unless shown otherwise.
Bars indicated thus 17x2-#5 etc. indicates 17 lines of bars with 2 lengths per line.
Reinforcement bars designated (E) shall be Epoxy Coated. See Special Provisions.

a5	1-5'	23'-5"	1-3'
a6	1-3'	19'-5"	1-3'
a7	1-3'	20'-11"	1-3'
a8	1-5'	16'-11"	1-3'

Bars a5, a6, a7 & a8



DESIGNED BY: R.M.R.
DRAWN BY: S.F.
CHECKED BY: R.M.R.

STATE OF ILLINOIS
DEPARTMENT OF TRANSPORTATION

SUPERSTRUCTURE SPANS 1 AND 4

F.A. ROUTE 409 OVER C.H. 11

STATION 3084+98.61

F.A. RT. 409 CLINTON COUNTY SECTION 14-14B-1

H. W. LOCHNER, INC.
ENGINEERS
CHICAGO, ILLINOIS

SHEET 2 of 20

FOR INFORMATION ONLY

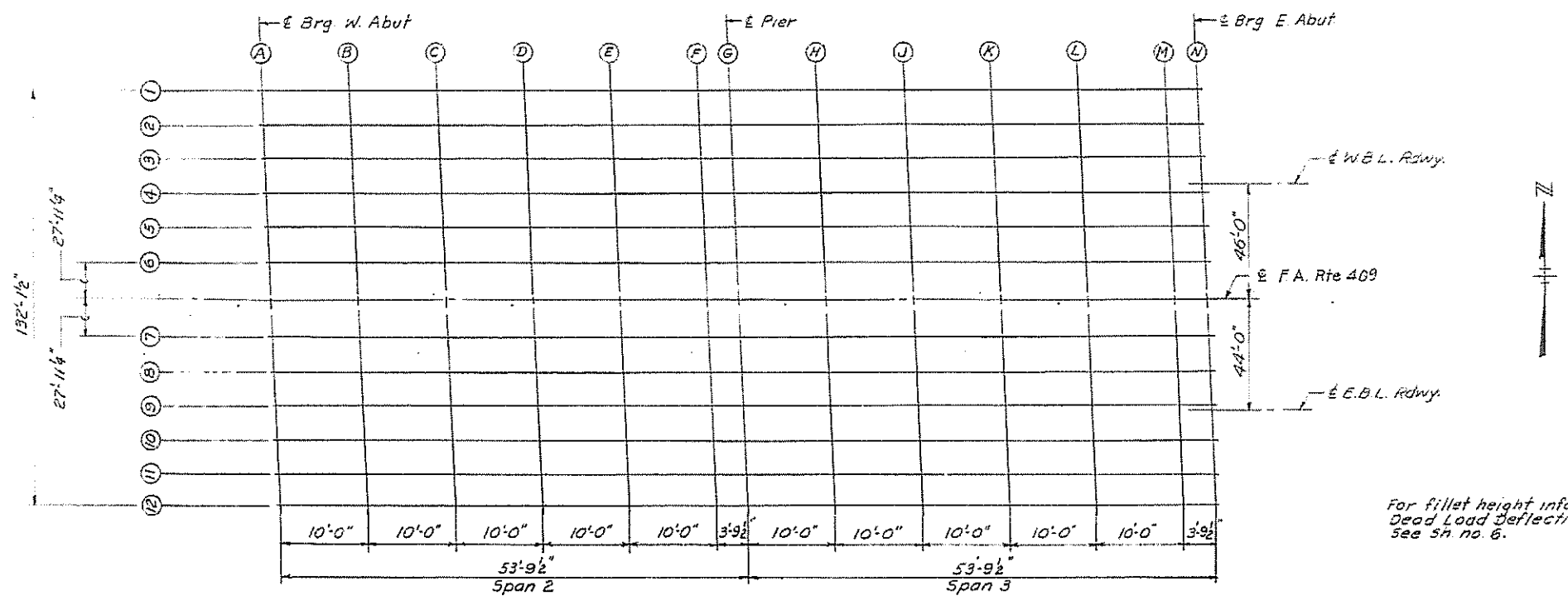
ROUTE NO.	SECTION	COUNTY	TOTAL SHEETS	SHEET NO.
F.A. - 409	14-14HB-1	CLINTON	67	26
FED. ROAD DIV. NO. 4		ILLINOIS	PROJECT	

SPAN 2

SPAN 3

ELEV LINE	GIRDER	STATION	NORMAL OFFSET	ELEVATION	DEFL + ELEV	DEFLECTION
A	1	308442.0434	22.0625	483.5603	483.5603	0.0000
B	1	308452.0433	22.0625	483.4042	483.4042	0.0126
C	1	308462.0433	22.0625	483.4210	483.4399	0.0189
D	1	308472.0432	22.0625	483.3485	483.3549	0.0163
E	1	308482.0432	22.0625	483.2743	483.2820	0.0077
F	1	308492.0433	22.0625	483.1981	483.1986	0.0004
G	1	308495.8333	22.0625	483.1688	483.1688	0.0000
A	2	308442.3637	14.4375	483.7170	483.7170	0.0000
B	2	308452.3636	14.4375	483.6602	483.6602	0.0126
C	2	308462.3636	14.4375	483.5775	483.5965	0.0189
D	2	308472.3635	14.4375	483.5050	483.5214	0.0163
E	2	308482.3635	14.4375	483.4307	483.4385	0.0077
F	2	308492.3636	14.4375	483.3545	483.3549	0.0004
G	2	308496.1535	14.4375	483.3251	483.3251	0.0000
A	3	308442.6840	6.8125	483.8667	483.8667	0.0000
B	3	308452.6839	6.8125	483.7778	483.7905	0.0126
C	3	308462.6839	6.8125	483.7071	483.7260	0.0189
D	3	308472.6838	6.8125	483.6345	483.6503	0.0163
E	3	308482.6838	6.8125	483.5601	483.5679	0.0077
F	3	308492.6839	6.8125	483.4839	483.4843	0.0004
G	3	308496.4738	6.8125	483.4545	483.4545	0.0000
A	4	308443.0041	-0.8125	483.9382	483.9382	0.0000
B	4	308453.0040	-0.8125	483.8693	483.8820	0.0126
C	4	308463.0040	-0.8125	483.7985	483.8174	0.0189
D	4	308473.0039	-0.8125	483.7259	483.7423	0.0163
E	4	308483.0039	-0.8125	483.6515	483.6592	0.0077
F	4	308493.0040	-0.8125	483.5751	483.5756	0.0004
G	4	308496.7939	-0.8125	483.5457	483.5457	0.0000
A	5	308443.3244	-8.4375	483.8159	483.8169	0.0000
B	5	308453.3243	-8.4375	483.7478	483.7606	0.0126
C	5	308463.3243	-8.4375	483.6771	483.6860	0.0189
D	5	308473.3242	-8.4375	483.6044	483.6208	0.0163
E	5	308483.3242	-8.4375	483.5299	483.5377	0.0077
F	5	308493.3243	-8.4375	483.4555	483.4540	0.0004
G	5	308497.1142	-8.4375	483.4241	483.4241	0.0000
A	6	308443.6447	-16.0625	483.6744	483.6744	0.0000
B	6	308453.6446	-16.0625	483.6054	483.6181	0.0126
C	6	308463.6446	-16.0625	483.5345	483.5534	0.0189
D	6	308473.6445	-16.0625	483.4618	483.4782	0.0163
E	6	308483.6445	-16.0625	483.3872	483.3949	0.0077
F	6	308493.6446	-16.0625	483.3108	483.3112	0.0004
G	6	308497.4345	-16.0625	483.2813	483.2813	0.0000

ELEV LINE	GIRDER	STATION	NORMAL OFFSET	ELEVATION	DEFL + ELEV	DEFLECTION
G	1	308495.8333	22.0625	483.1688	483.1688	0.0000
H	1	308505.8332	22.0625	483.0901	483.0937	0.0035
J	1	308515.8332	22.0625	483.0096	483.0224	0.0128
K	1	308525.8333	22.0625	482.9272	482.9455	0.0182
L	1	308535.8333	22.0625	482.8430	482.8584	0.0154
M	1	308545.8332	22.0625	482.7569	482.7619	0.0049
N	1	308549.6234	22.0625	482.7238	482.7238	0.0000
G	2	308496.1535	14.4375	483.3251	483.3251	0.0000
H	2	308506.1535	14.4375	483.2464	483.2500	0.0035
J	2	308516.1536	14.4375	483.1656	483.1787	0.0128
K	2	308526.1536	14.4375	483.0834	483.1017	0.0182
L	2	308536.1535	14.4375	482.9991	483.0146	0.0154
M	2	308546.1535	14.4375	482.9130	482.9180	0.0049
N	2	308549.9437	14.4375	482.8799	482.8799	0.0000
G	3	308496.4738	6.8125	483.4545	483.4545	0.0000
H	3	308506.4738	6.8125	483.3757	483.3793	0.0035
J	3	308516.4739	6.8125	483.2951	483.3079	0.0128
K	3	308526.4739	6.8125	483.2126	483.2309	0.0182
L	3	308536.4738	6.8125	483.1282	483.1437	0.0154
M	3	308546.4738	6.8125	483.0421	483.0470	0.0049
N	3	308550.2640	6.8125	483.0089	483.0089	0.0000
G	4	308496.7939	-0.8125	483.5457	483.5457	0.0000
H	4	308506.7939	-0.8125	483.4669	483.4704	0.0035
J	4	308516.7940	-0.8125	483.3862	483.3992	0.0128
K	4	308526.7940	-0.8125	483.3036	483.3219	0.0182
L	4	308536.7939	-0.8125	483.2193	483.2347	0.0154
M	4	308546.7939	-0.8125	483.1330	483.1380	0.0049
N	4	308550.5841	-0.8125	483.0998	483.0998	0.0000
G	5	308497.1142	-8.4375	483.4241	483.4241	0.0000
H	5	308507.1142	-8.4375	483.3452	483.3488	0.0035
J	5	308517.1143	-8.4375	483.2644	483.2773	0.0128
K	5	308527.1143	-8.4375	483.1813	483.2001	0.0182
L	5	308537.1142	-8.4375	483.0974	483.1128	0.0154
M	5	308547.1142	-8.4375	483.0111	483.0160	0.0049
N	5	308550.9044	-8.4375	482.9779	482.9779	0.0000
G	6	308497.4345	-16.0625	483.2813	483.2813	0.0000
H	6	308507.4345	-16.0625	483.2023	483.2059	0.0035
J	6	308517.4346	-16.0625	483.1215	483.1333	0.0128
K	6	308527.4346	-16.0625	483.0389	483.0572	0.0182
L	6	308537.4345	-16.0625	482.9543	482.9698	0.0154
M	6	308547.4345	-16.0625	482.8680	482.8730	0.0049
N	6	308551.2247	-16.0625	482.8348	482.8348	0.0000



For fillet height information and Dead Load Deflection diagram see SH. no. 6.

STATE OF ILLINOIS
DEPARTMENT OF TRANSPORTATION

**TABLES OF ELEVATION
SPANS 2 & 3 - WESTBOUND ROADWAY
F.A. ROUTE 409 OVER C.H. II**

STATION 3084 + 98.61

F.A. RT. 409 CLINTON COUNTY SECTION 14-14HB-1

H. W. LOCHNER, INC.
ENGINEERS
CHICAGO, ILLINOIS

SHEET 5 of 20

DESIGNED BY _____
DRAWN BY _____
CHECKED BY _____

PLAN
(Westbound and Eastbound Roadways)

FOR INFORMATION ONLY

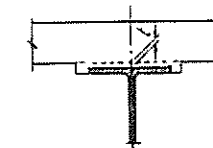
ROUTE NO.	SECTION	COUNTY	TOTAL SHEETS	SHEET NO.
F.A.-409	14-14HB-1	CLINTON	27	27
FED. ROAD DIV. NO. 4		ILLINOIS	PROJECT	

SPAN 2

ELEV LINE	GIRDER	STATION	NORMAL OFFSET	ELEVATION	DEFL. + ELEV.	DEFLECTION
B	7	308497.9977	16.0625	483.6584	483.6584	0.0000
C	7	308498.9977	16.0625	483.5889	483.6016	0.0126
D	7	308499.9956	16.0625	483.5176	483.5265	0.0189
E	7	308475.9956	16.0625	483.4444	483.4608	0.0164
F	7	308485.9957	16.0625	483.3694	483.3771	0.0077
G	7	308495.9957	16.0625	483.2925	483.2930	0.0004
H	7	308495.7856	16.0625	483.2629	483.2629	0.0000
A	8	308446.3160	8.4375	483.7965	483.7565	0.0400
B	8	308456.3159	8.4375	483.7269	483.7396	0.0126
C	8	308466.3159	8.4375	483.6555	483.6740	0.0185
D	8	308476.3160	8.4375	483.5823	483.5987	0.0163
E	8	308486.3160	8.4375	483.5072	483.5150	0.0077
F	8	308496.3159	8.4375	483.4309	483.4309	0.0000
G	8	308500.1050	8.4375	483.4007	483.4007	0.0000
A	9	308445.6302	0.8125	483.9134	483.9134	0.0000
B	9	308456.6302	0.8125	483.8438	483.8565	0.0126
C	9	308466.6302	0.8125	483.7724	483.7913	0.0189
D	9	308476.6303	0.8125	483.6991	483.7155	0.0163
E	9	308486.6303	0.8125	483.6240	483.6317	0.0077
F	9	308496.6302	0.8125	483.5470	483.5470	0.0000
G	9	308500.4263	0.8125	483.5173	483.5173	0.0000
A	10	308446.9564	-5.8125	483.8175	483.8175	0.0000
B	10	308456.9562	-5.8125	483.7475	483.7602	0.0126
C	10	308466.9562	-5.8125	483.6763	483.6952	0.0189
D	10	308476.9564	-5.8125	483.6030	483.6192	0.0163
E	10	308486.9564	-5.8125	483.5278	483.5392	0.0114
F	10	308496.9562	-5.8125	483.4507	483.4512	0.0004
G	10	308500.7454	-5.8125	483.4211	483.4211	0.0000
A	11	308447.2767	-14.4375	483.6834	483.6834	0.0000
B	11	308457.2766	-14.4375	483.6137	483.6264	0.0126
C	11	308467.2766	-14.4375	483.5421	483.5611	0.0189
D	11	308477.2767	-14.4375	483.4687	483.4851	0.0163
E	11	308487.2767	-14.4375	483.3935	483.4013	0.0077
F	11	308497.2766	-14.4375	483.3164	483.3168	0.0004
G	11	308501.0667	-14.4375	483.2867	483.2867	0.0000
A	12	308447.5970	-22.0625	483.5224	483.5224	0.0000
B	12	308457.5969	-22.0625	483.4526	483.4653	0.0126
C	12	308467.5969	-22.0625	483.3810	483.3994	0.0189
D	12	308477.5970	-22.0625	483.3075	483.3239	0.0163
E	12	308487.5972	-22.0625	483.2322	483.2400	0.0077
F	12	308497.5969	-22.0625	483.1550	483.1550	0.0000
G	12	308501.3870	-22.0625	483.1253	483.1253	0.0000

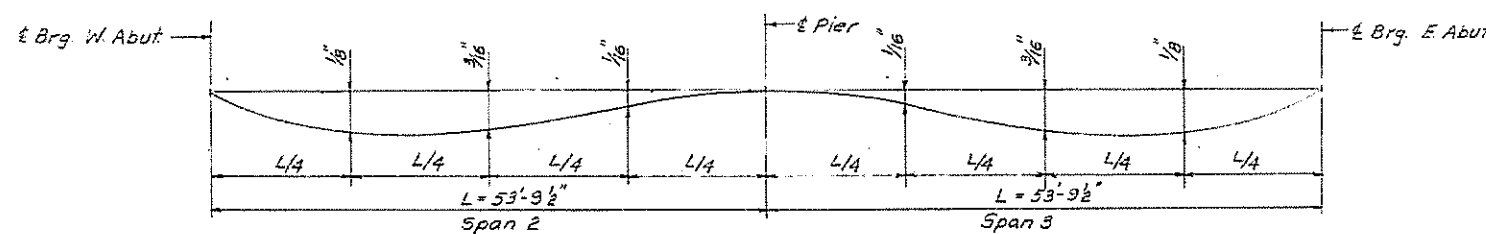
SPAN 3

ELEV LINE	GIRDER	STATION	NORMAL OFFSET	ELEVATION	DEFL. + ELEV.	DEFLECTION
G	7	308497.7856	16.0625	483.2629	483.2629	0.0000
H	7	308498.7857	16.0625	483.1835	483.1871	0.0035
J	7	308499.7857	16.0625	483.1022	483.1151	0.0128
K	7	308499.7856	16.0625	483.0192	483.0375	0.0182
L	7	308499.7856	16.0625	482.9342	482.9496	0.0154
M	7	308499.7857	16.0625	482.8474	482.8524	0.0049
N	7	308499.7856	16.0625	482.8140	482.8140	0.0000
G	8	308500.1060	8.4375	483.4007	483.4007	0.0000
H	8	308510.1060	8.4375	483.3212	483.3248	0.0035
J	8	308520.1059	8.4375	483.2399	483.2527	0.0128
K	8	308530.1059	8.4375	483.1568	483.1751	0.0182
L	8	308540.1060	8.4375	483.0718	483.0872	0.0154
M	8	308550.1060	8.4375	482.9849	482.9899	0.0049
N	8	308553.8959	8.4375	482.9515	482.9515	0.0000
G	9	308500.4263	0.8125	483.5173	483.5173	0.0000
H	9	308510.4263	0.8125	483.4378	483.4413	0.0035
J	9	308520.4262	0.8125	483.3564	483.3592	0.0028
K	9	308530.4262	0.8125	483.2732	483.2915	0.0182
L	9	308540.4263	0.8125	483.1881	483.2036	0.0154
M	9	308550.4263	0.8125	483.1012	483.1082	0.0069
N	9	308554.2163	0.8125	483.0678	483.0678	0.0000
G	10	308500.7464	-6.8125	483.4211	483.4211	0.0000
H	10	308510.7464	-6.8125	483.3415	483.3450	0.0035
J	10	308520.7463	-6.8125	483.2600	483.2729	0.0128
K	10	308530.7463	-6.8125	483.1768	483.1951	0.0182
L	10	308540.7464	-6.8125	483.0916	483.1071	0.0154
M	10	308550.7464	-6.8125	483.0047	483.0096	0.0049
N	10	308554.5363	-6.8125	482.9712	482.9712	0.0000
G	11	308501.0667	-14.4375	483.2867	483.2867	0.0000
H	11	308511.0667	-14.4375	483.2071	483.2106	0.0035
J	11	308521.0666	-14.4375	483.1256	483.1384	0.0128
K	11	308531.0666	-14.4375	483.0422	483.0605	0.0182
L	11	308541.0667	-14.4375	482.9570	482.9725	0.0154
M	11	308551.0667	-14.4375	482.8700	482.8790	0.0089
N	11	308554.8566	-14.4375	482.8366	482.8366	0.0000
G	12	308501.3870	-22.0625	483.1253	483.1253	0.0000
H	12	308511.3870	-22.0625	483.0456	483.0492	0.0035
J	12	308521.3869	-22.0625	482.9641	482.9769	0.0128
K	12	308531.3869	-22.0625	482.8807	482.8990	0.0182
L	12	308541.3870	-22.0625	482.7954	482.8109	0.0154
M	12	308551.3870	-22.0625	482.7083	482.7133	0.0049
N	12	308555.1770	-22.0625	482.6749	482.6749	0.0000



FILLET HEIGHTS-GIRDER SPANS

To determine "t", after all structural steel has been erected, elevations of the top flanges of the girders shall be taken at intervals shown on sh. no. 5. These elevations subtracted from the Theoretical Grade Elevations Adjusted for Dead Load Deflections shown on sh. nos. 5 & 6 minus Slab thickness equals the fillet heights "t" above top of Girders.



DEAD LOAD DEFLECTIONS

Note: The above deflections are not to be used in the field if the Engineer is working from the grade elevations adjusted for dead load deflections shown on sh. nos. 5 & 6. Deflections include weight of concrete only.

DESIGNED BY _____
 DRAWN BY _____
 CHECKED BY _____

STATE OF ILLINOIS
 DEPARTMENT OF TRANSPORTATION

TABLES OF ELEVATION
 SPANS 2 & 3 - EASTBOUND ROADWAY
 F.A. ROUTE 409 OVER C.H. II
 STATION 3084 + 98.61

F.A. RT. 409 CLINTON COUNTY SECTION 14-14 HB-1

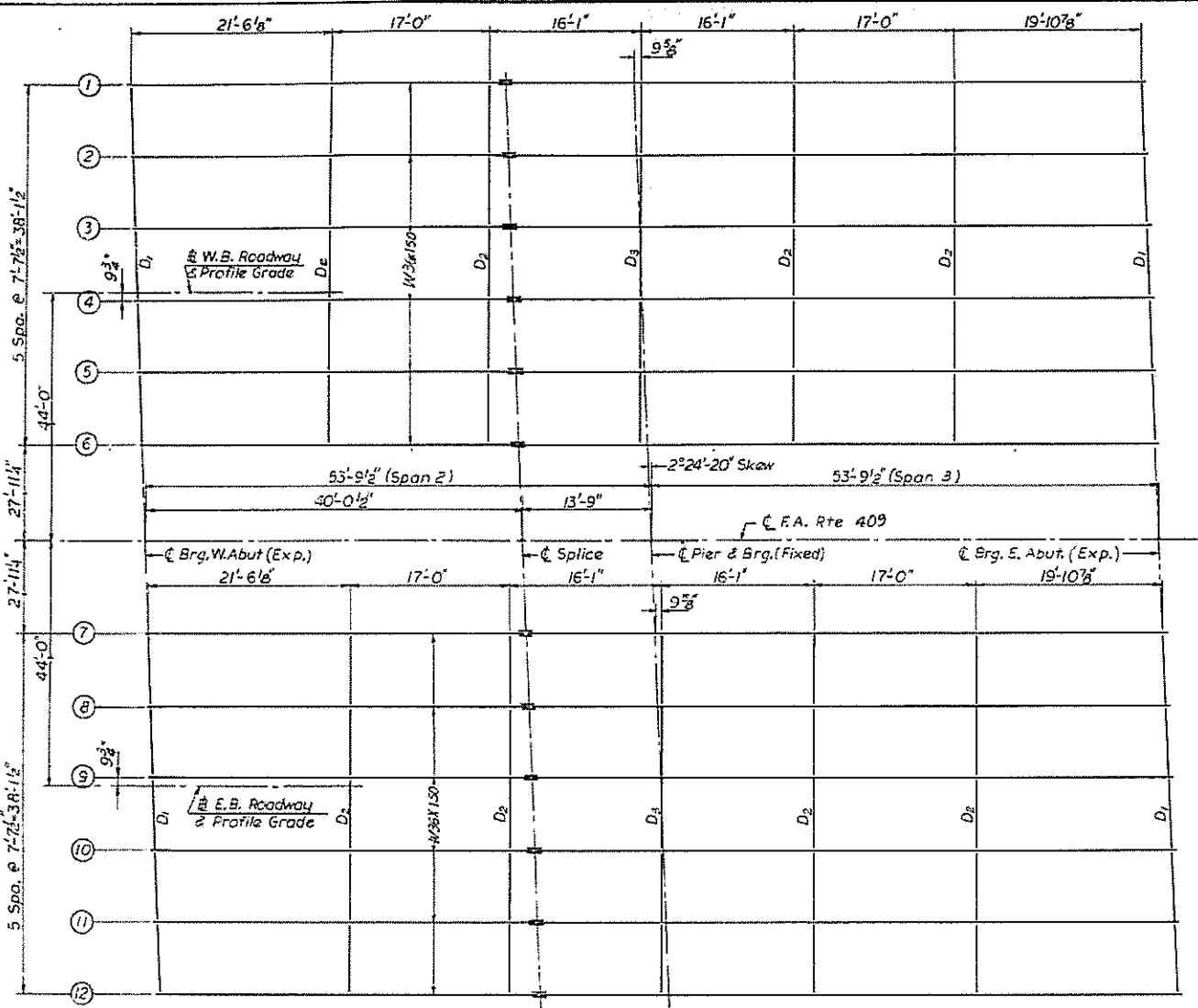
H. W. LOCHNER, INC.
 ENGINEERS
 CHICAGO, ILLINOIS

SHEET
 6 of 20

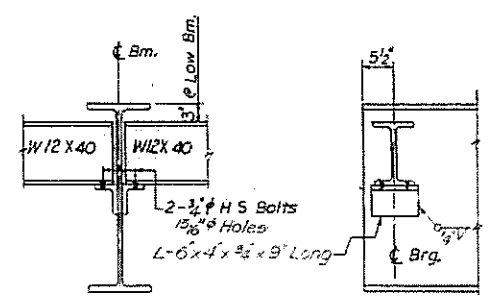
FOR INFORMATION ONLY

ROUTE NO.	SECTION	COUNTY	TOTAL SHEETS	SHEET NO.
F.A. - 409	14-14HB-1	CLINTON	57	57
FED. ROAD DIV. NO. 4		ILLINOIS PROJECT		

Beam	Cent. Brg. W. Abut.	Cent. Splice	Cent. Pier	Cent. Brg. E. Abut.
1	482.68	482.54	482.44	482.05
2	483.04	482.70	482.60	482.20
3	483.17	482.83	482.73	482.33
4	483.26	482.92	482.82	482.42
5	483.14	482.80	482.70	482.30
6	483.00	482.66	482.56	482.16
7	482.98	482.64	482.54	482.14
8	483.12	482.78	482.67	482.27
9	483.24	482.89	482.79	482.39
10	483.14	482.80	482.69	482.29
11	483.01	482.66	482.56	482.16
12	482.84	482.50	482.40	482.00

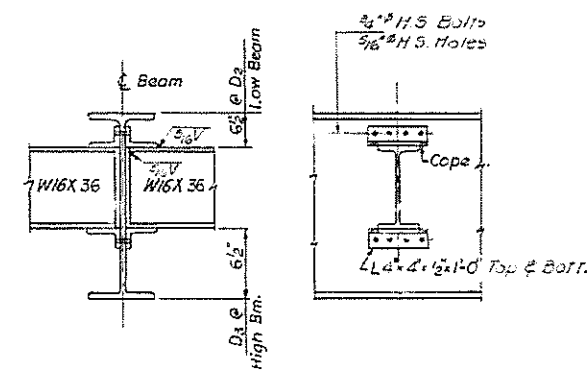


FRAMING PLAN



END DIAPHRAGMS - D1

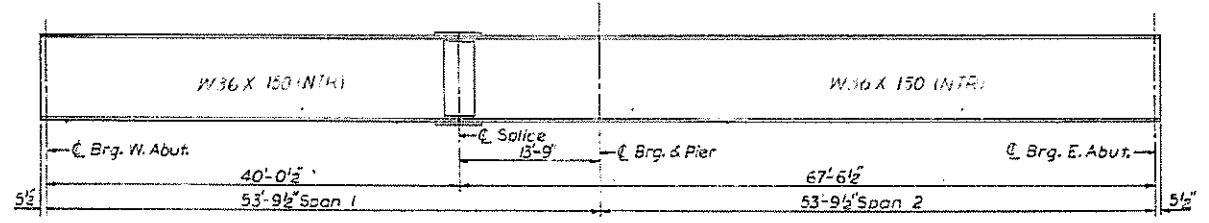
Note: Hardened washers shall be required over all 1 1/2" H S Holes.



INTERMEDIATE DIAPHRAGMS - D2 & D3

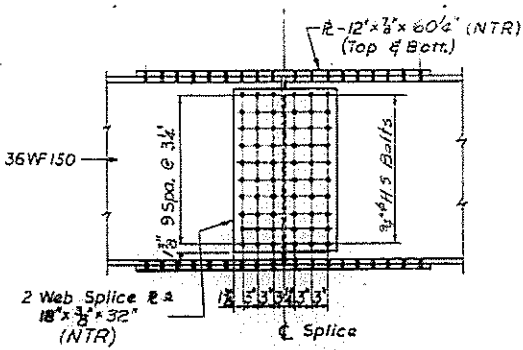
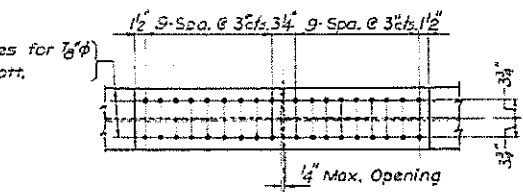
	0-4 Sp.	Pier
I_2 (in ⁴)	9090	9090
S_x (in ³)	504	504
Q (in ²)	1.924	1.924
M_2 (k)	269.1	473.5
M_3 (k)	333.3	239.1
M_{max} (k)	107.9	91.0
M_{total} (k)	761.3	845.9
I_2 TOTAL (in ⁴)	18.1	20.2

	Abut.	Pier
R_D (k)	26.7	89.0
R_E (k)	39.4	47.8
T_{imp} (k)	11.0	13.3
R_{TOTAL} (k)	77.1	150.2



BEAM ELEVATION

"NTR" denotes beams & plates to which notch toughness requirements are applicable.



SPlice DETAIL

DESIGNED BY: R.M.R.
 DRAWN BY: V.B.
 CHECKED BY:

STATE OF ILLINOIS
 DEPARTMENT OF TRANSPORTATION

FRAMING PLAN AND STEEL DETAILS
F.A. ROUTE 409 OVER C.H. 11

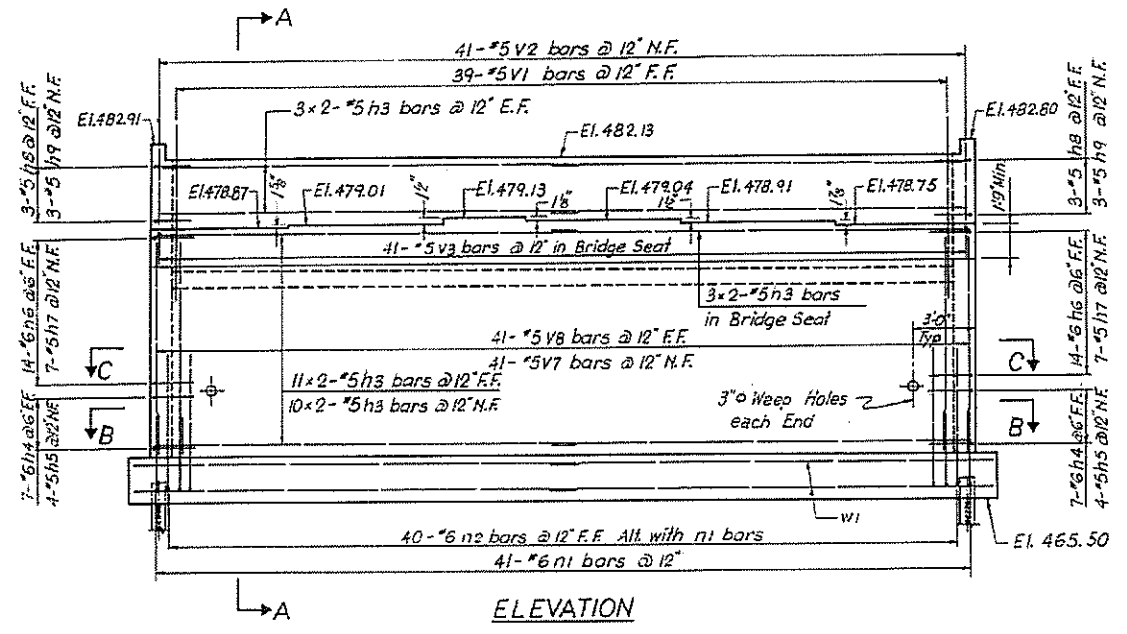
STATION 3084 + 98.61
 F.A. RT. 409 CLINTON COUNTY SECTION 14-14HB-1

H. W. LOCHNER, INC.
 ENGINEERS
 CHICAGO, ILLINOIS

SHEET 7 OF 20

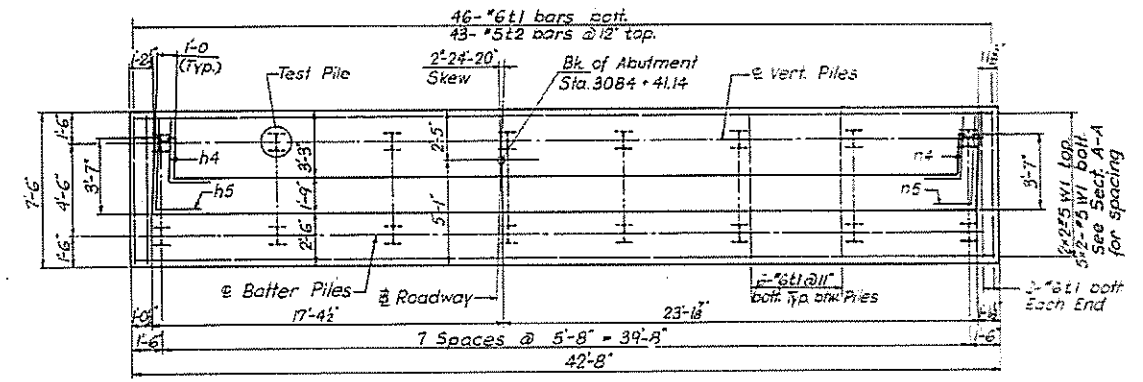
FOR INFORMATION ONLY

ROUTE NO.	SECTION	COUNTY	TOTAL SHEETS	SHEET NO.
F.A. - 409	14-14HB-1	CLINTON	57	3-2
FED. ROAD DIV. NO. 4		ILLINOIS PROJECT		



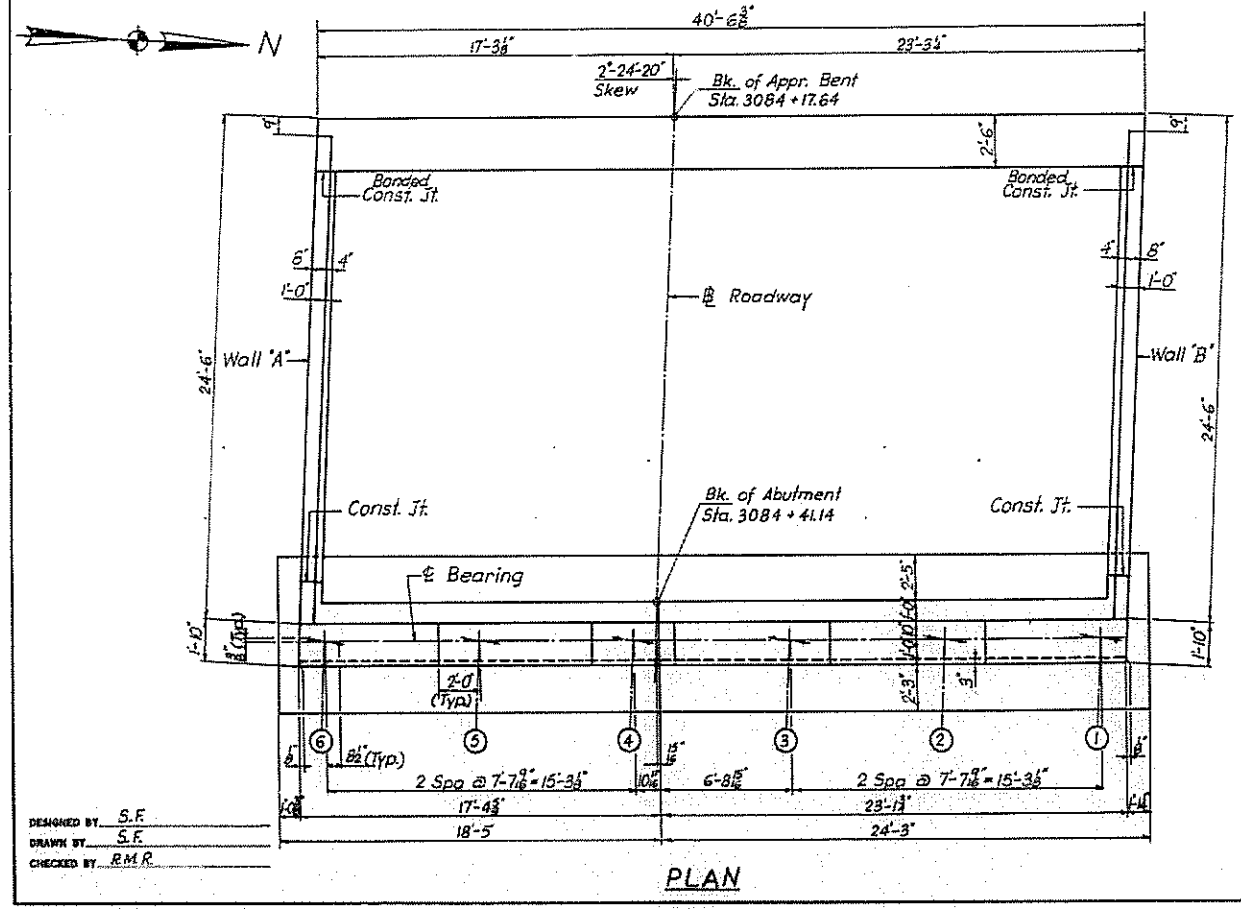
ELEVATION

Pile data:
 Type : Steel - HP8x36
 Drive to Refusal
 Estimated Length : 22 Ft.
 No. Required : 15 *
 Test Pile : 1
 * Does not include Test Pile

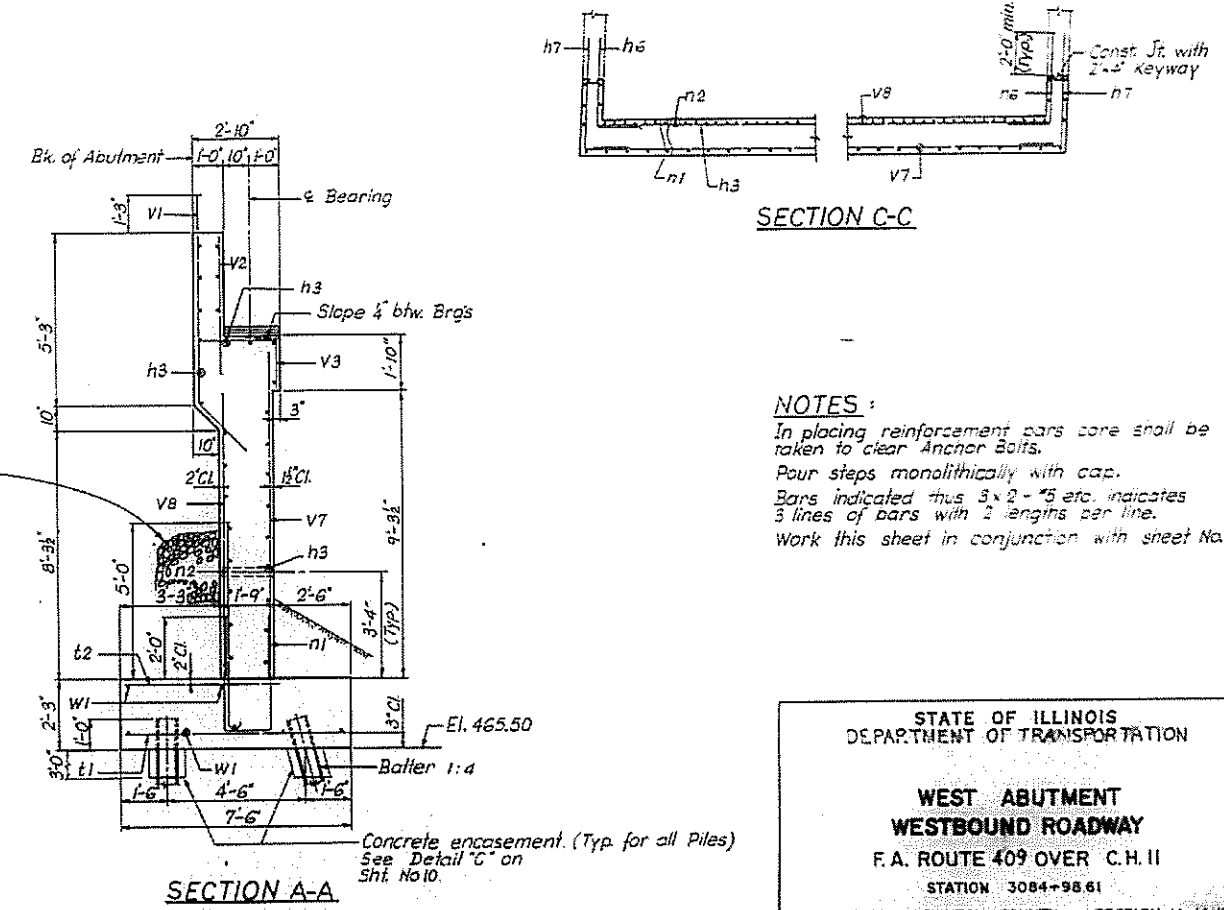


SECTION B-B

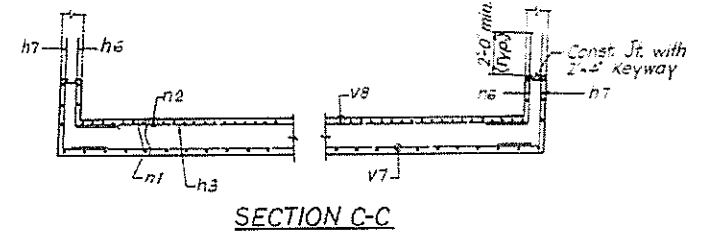
Key to notation:
 E.F. = Each Face
 F.F. = Far Face
 N.F. = Near Face



PLAN



SECTION A-A



SECTION C-C

NOTES:
 In placing reinforcement bars care shall be taken to clear Anchor Bolts.
 Pour steps monolithically with cap.
 Bars indicated thus 3x2-#5 etc. indicates 3 lines of bars with 2 lengths per line.
 Work this sheet in conjunction with sheet No. 10

STATE OF ILLINOIS
 DEPARTMENT OF TRANSPORTATION

**WEST ABUTMENT
 WESTBOUND ROADWAY**
 F.A. ROUTE 409 OVER C.H. II
 STATION 3084+98.61
 F.A. RT. 409 CLINTON COUNTY SECTION 14-14HB-1

H. W. LOCHNER, INC.
 ENGINEERS
 CHICAGO, ILLINOIS

SHEET
 9 OF 20

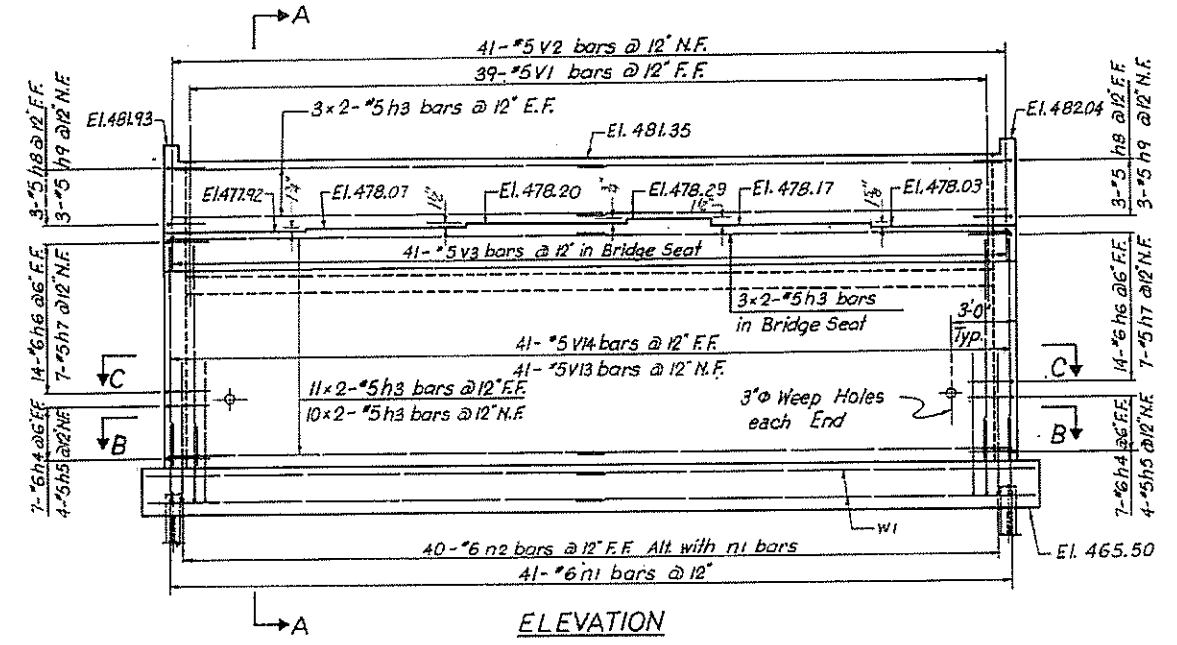
FOR INFORMATION ONLY

FILE NAME	USER NAME	DESIGNED	REVISED	EXISTING PLAN SHEET	FAP R.T.E.	SECTION	COUNTY	TOTAL SHEETS	SHEET NO.
p:\planroom\dms\illinois.gov\PI\DOT\Documents\DOT\Districts\B\Projects\0876N\Drawings\CAD\Sheets\0876N46-shr-plan.dwg	nicholson			IL ROUTE 50	327	14-14HB-2-BP-1	CLINTON	24	13
Default									

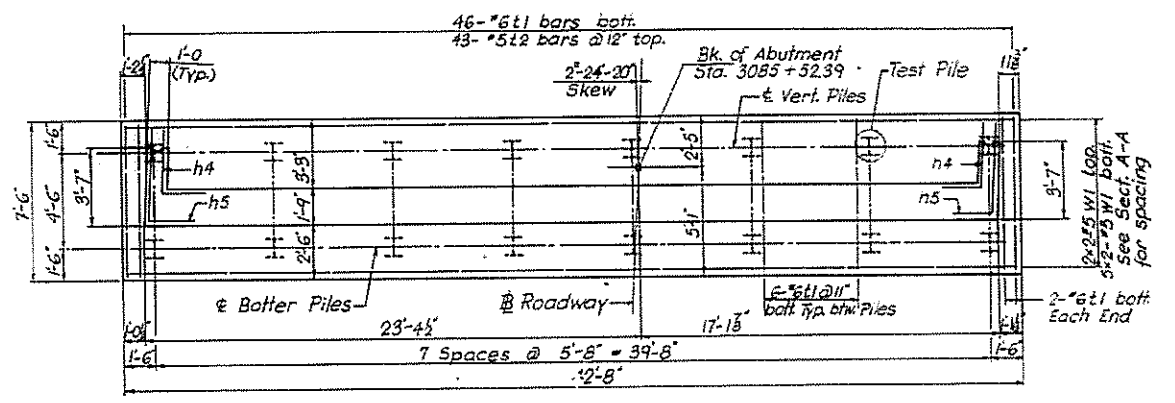
CONTRACT NO. 76N46 ILLINOIS FED. AID PROJECT

ROUTE NO.	SECTION	COUNTY	TOTAL SHEETS	SHEET NO.
F.A. - 409	14-14HB-1	CLINTON	57	57
FED. ROAD DIV. NO. 4		ILLINOIS PROJECT		

Pile data :
 Type : Steel - HP 8x36
 Drive to Refusal
 Estimated Length : 22 Ft.
 No. Required : 15 *
 Test Pile : 1
 * Does not include Test Pile

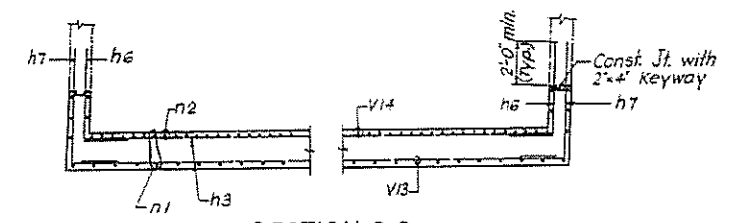


ELEVATION

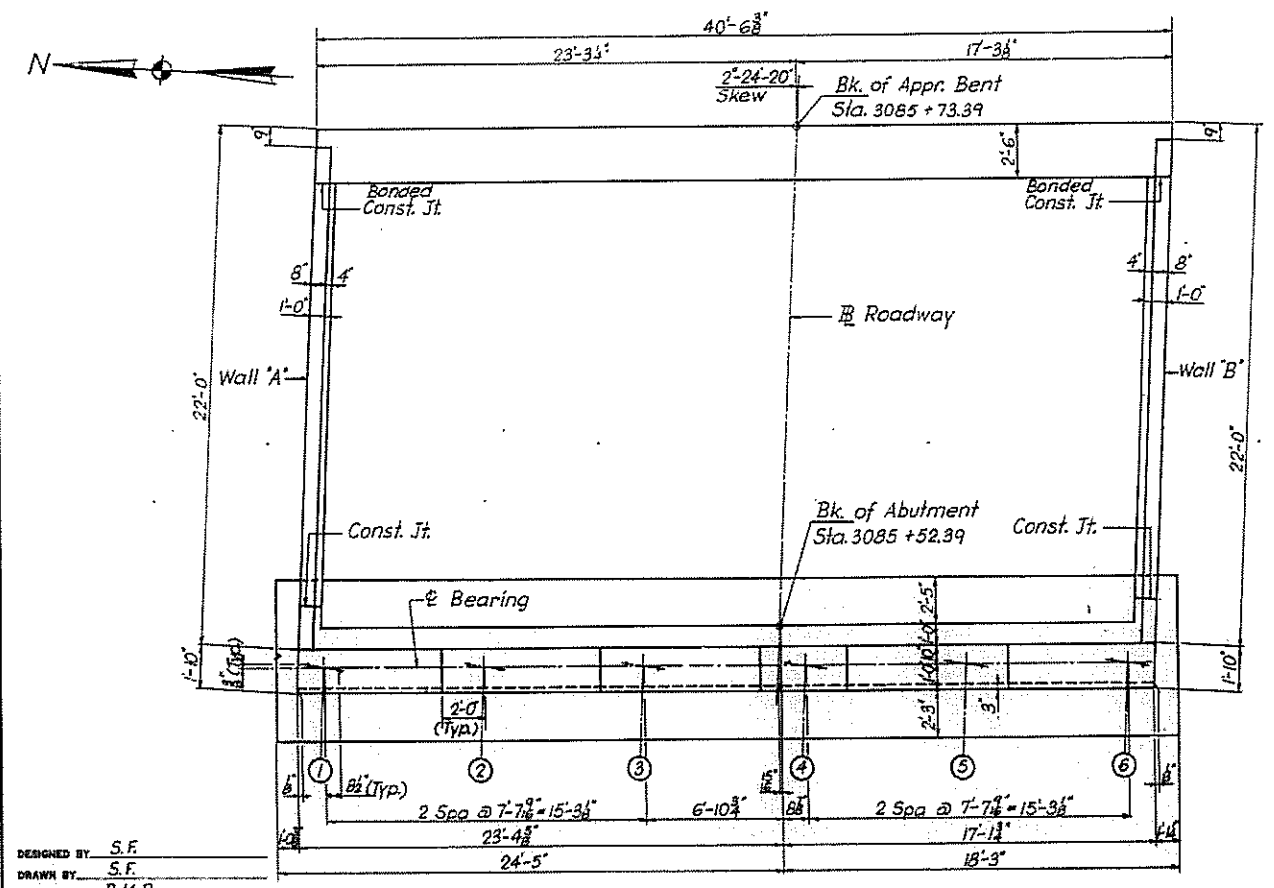


SECTION B-B

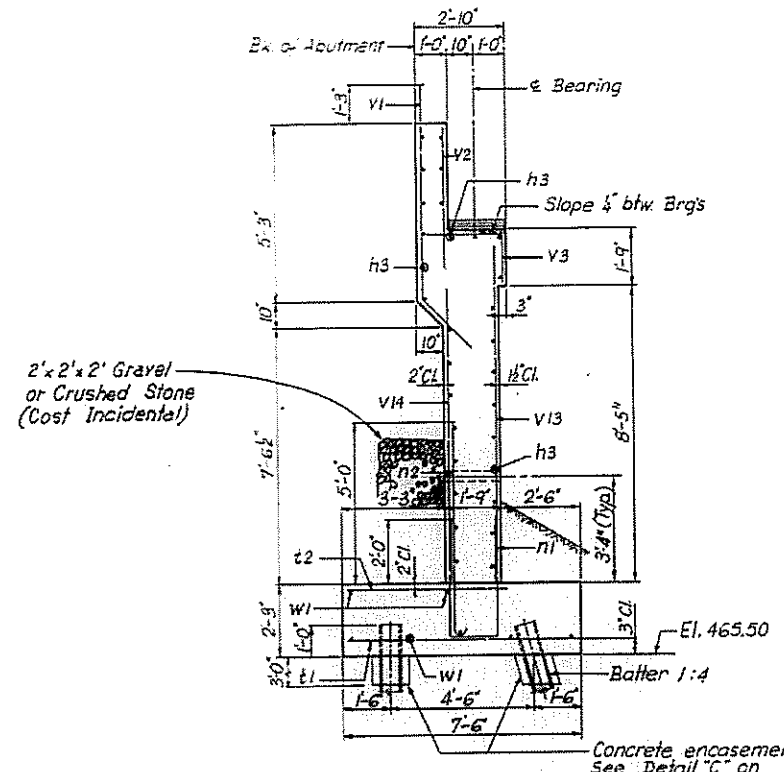
Key to notation :
 E.F. = Each Face
 F.F. = Far Face
 N.F. = Near Face



SECTION C-C



PLAN



SECTION A-A

NOTES :
 In placing reinforcement bars care shall be taken to clear Anchor Bolts.
 Four steps monolithically with cap.
 Bars indicated thus 3 #2 - #5 etc. indicates 3 lines of bars with 2 lengths per line.
 Work this sheet in conjunction with sheet No.12

DESIGNED BY S.F.
 DRAWN BY S.F.
 CHECKED BY R.M.R.

STATE OF ILLINOIS
 DEPARTMENT OF TRANSPORTATION

**EAST ABUTMENT
 WESTBOUND ROADWAY**

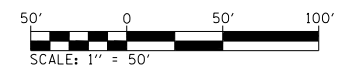
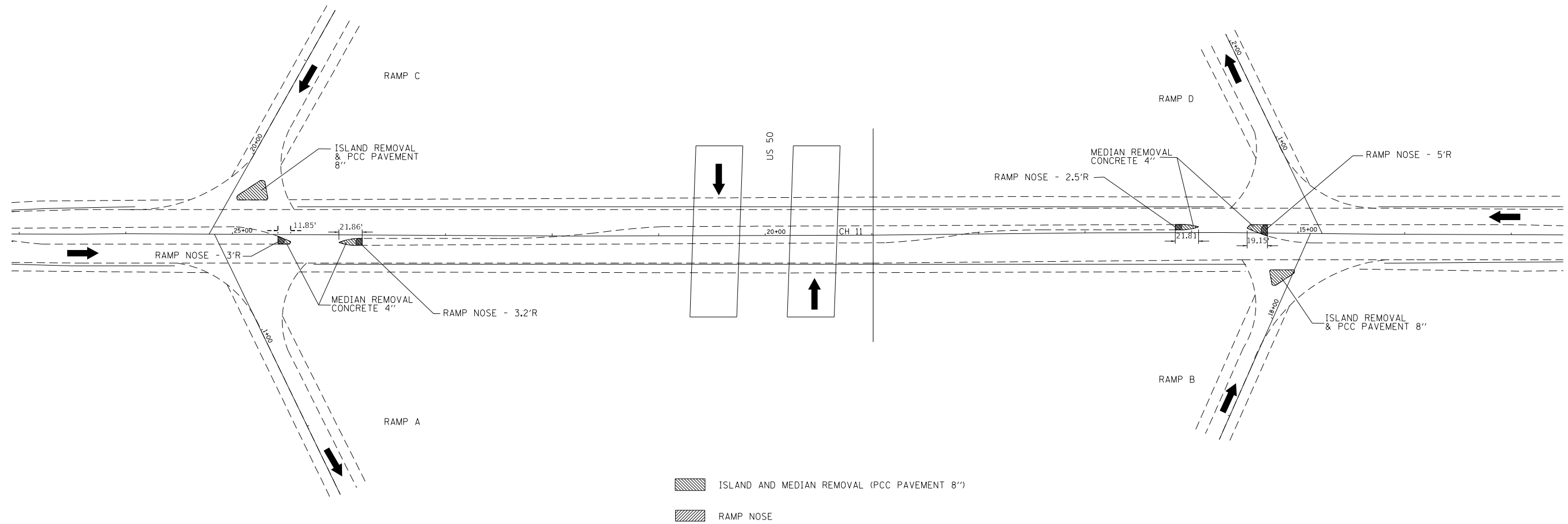
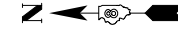
F.A. ROUTE 409 OVER C.H. 11
 STATION 3084+98.61

F.A. RT. 409 CLINTON COUNTY SECTION 14-14HB-1
 H. W. LOCHNER, INC.
 ENGINEERS
 CHICAGO, ILLINOIS

SHEET 11 OF 20

FOR INFORMATION ONLY

FILE NAME	USER NAME	DESIGNED	REVISED	STATE OF ILLINOIS DEPARTMENT OF TRANSPORTATION	EXISTING PLAN SHEET IL ROUTE 50	FAP RTE.	SECTION	COUNTY	TOTAL SHEETS	SHEET NO.
p:\planroom\dot\illinois.gov\PWIDOT\Documents\DOT Offices\District 8\Projects\0876N\DRAWN\CA\sheds\0876N46-shr-plan.dwg	nicholson					327	14-14HB-2-BP-1	CLINTON	24	15
						SHEET OF SHEETS		STA. TO STA.	CONTRACT NO. 76N46	
						ILLINOIS FED. AID PROJECT				



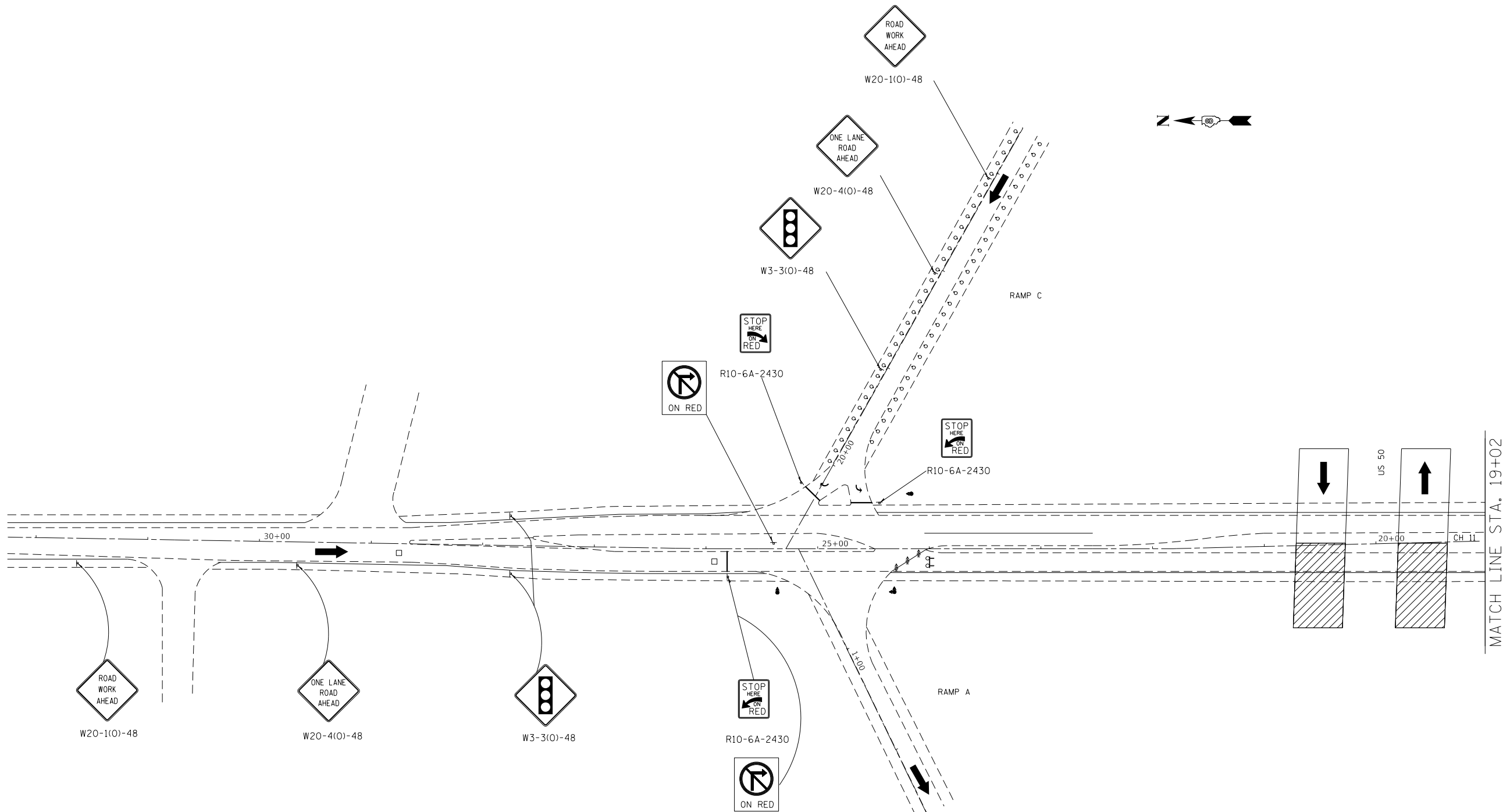
FILE NAME =	USER NAME = gelnh	DESIGNED - _____	REVISED - _____
p:\planroom.dot.illinois.gov\PIDOT\Documents\IDOT Offices\District 8\Projects\0876N46\0876N46\CAD\Drawings\0876N46-sht-plan.dgn		CHECKED - _____	REVISED - _____
MODELNAME	PLOT SCALE = 100.0000' / in.	DATE - _____	REVISED - _____
	PLOT DATE = 2/5/2020		

**STATE OF ILLINOIS
DEPARTMENT OF TRANSPORTATION**


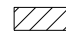


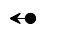



**PROPOSED PLAN SHEET
CH 11**

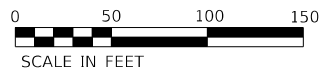
SHEET ____ OF ____ SHEETS STA. _____ TO STA. _____

FAP RTE.	SECTION	COUNTY	TOTAL SHEETS	SHEET NO.
327	14-14HB-2-BP-1	CLINTON	24	19
			CONTRACT NO. 76N46	
ILLINOIS FED. AID PROJECT				



LEGEND

-  DIRECTION INDICATOR BARRICADE WITH STEADY BURN MONODIRECTIONAL LIGHT
-  WORK AREA
-  DRUM WITH STEADY BURNING BI-DIRECTIONAL LIGHT
-  TRAFFIC DIRECTION ARROW
-  TRAFFIC SIGNAL
-  DETECTOR LOOPS
-  SIGN
-  TYPE III BARRICADE WITH FLASHING LIGHTS



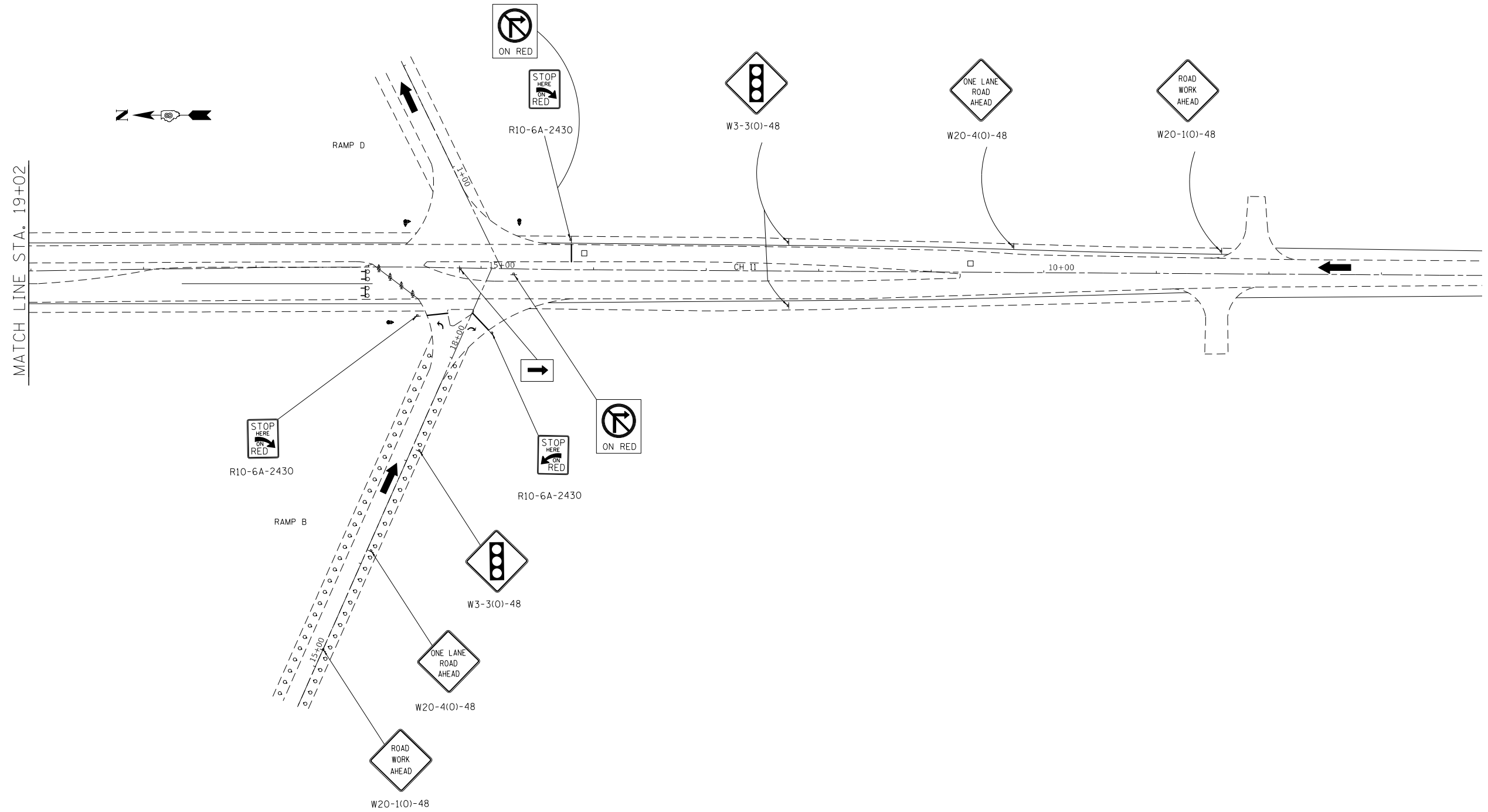
FILE NAME =	USER NAME = gelinh	DESIGNED - _____	REVISED - _____
p:\planroom.dot.illinois.gov\PIDOT\Documents\IDOT Offices\District 8\Projects\0876N46\0876N46-CAD\Drawings\0876N46-shr-staging.dwg		CHECKED - _____	REVISED - _____
MODELNAME	PLOT DATE = 2/5/2020	DATE - _____	REVISED - _____

**STATE OF ILLINOIS
DEPARTMENT OF TRANSPORTATION**



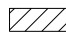
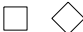

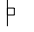


**STAGE I CONSTRUCTION
IL ROUTE 50**

SHEET ____ OF ____ SHEETS STA. _____ TO STA. _____

FAP RTE.	SECTION	COUNTY	TOTAL SHEETS	SHEET NO.
327	14-14HB-2-BP-1	CLINTON	24	20
CONTRACT NO. 76N46				
ILLINOIS FED. AID PROJECT				



LEGEND

-  DIRECTION INDICATOR BARRICADE WITH STEADY BURN MONODIRECTIONAL LIGHT
-  TRAFFIC SIGNAL
-  WORK AREA
-  DETECTOR LOOPS
-  DRUM WITH STEADY BURNING BI-DIRECTIONAL LIGHT
-  SIGN
-  TRAFFIC DIRECTION ARROW
-  TYPE III BARRICADE WITH FLASHING LIGHTS



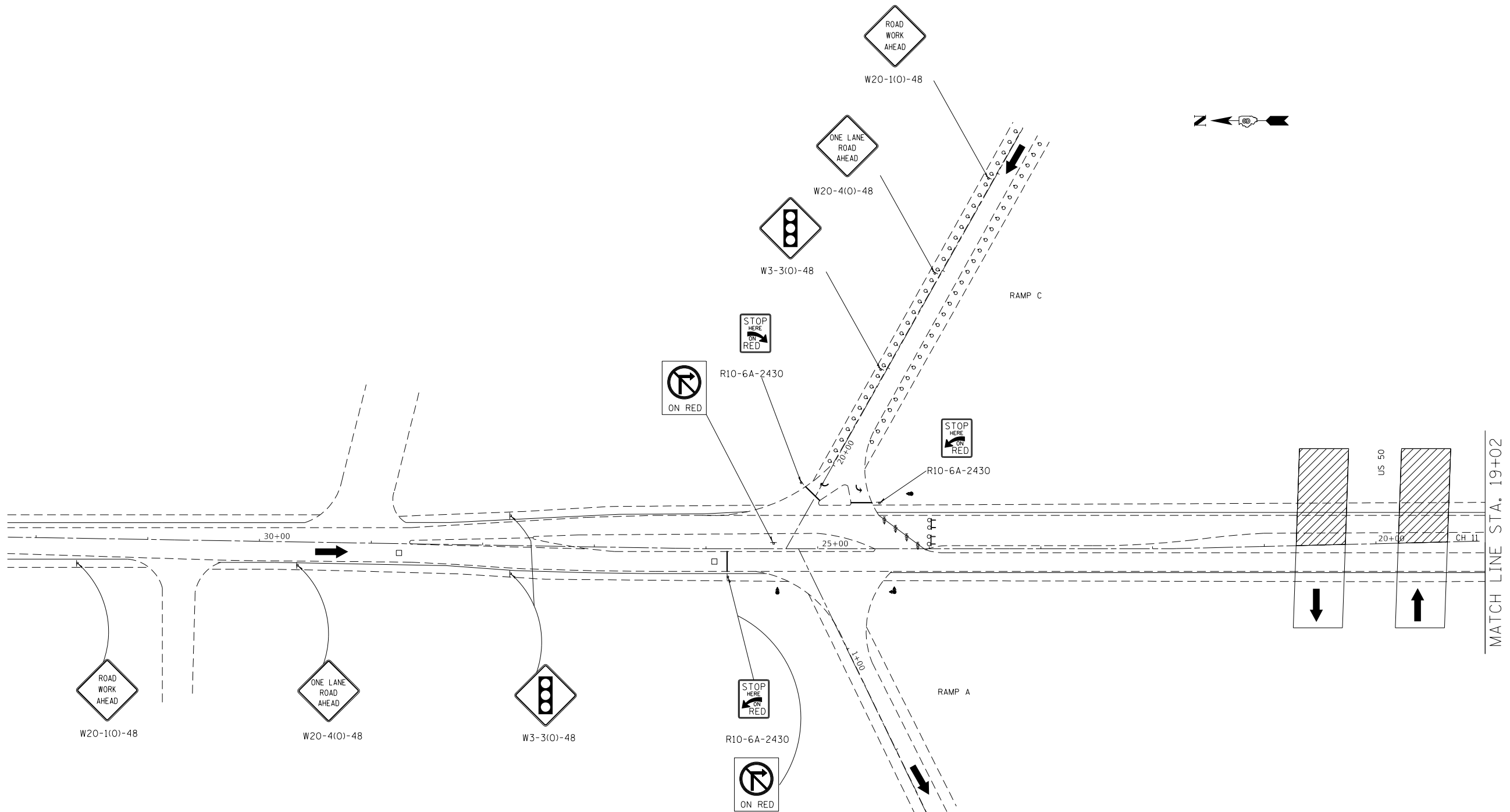
FILE NAME =	USER NAME = gelinh	DESIGNED -	REVISED -
pw:\planroom.dot.illinois.gov\PIDOT\Documents\IDOT Offices\District 8\Projects\0876N46\BRAN to CAD\sheets\0876N46-shr-staging.dgn		CHECKED -	REVISED -
MODELNAME	PLOT DATE = 2/5/2020	DATE -	REVISED -

STATE OF ILLINOIS
DEPARTMENT OF TRANSPORTATION


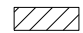






STAGE I CONSTRUCTION
IL ROUTE 50

SHEET ___ OF ___ SHEETS STA. _____ TO STA. _____

FAP RTE.	SECTION	COUNTY	TOTAL SHEETS	SHEET NO.
327	14-14HB-2-BP-1	CLINTON	25	21
ILLINOIS FED. AID PROJECT			CONTRACT NO. 76N46	



LEGEND

-  DIRECTION INDICATOR BARRICADE WITH STEADY BURN MONODIRECTIONAL LIGHT
-  WORK AREA
-  DRUM WITH STEADY BURNING BI-DIRECTIONAL LIGHT
-  TRAFFIC DIRECTION ARROW
-  TRAFFIC SIGNAL
-  DETECTOR LOOPS
-  SIGN
-  TYPE III BARRICADE WITH FLASHING LIGHTS



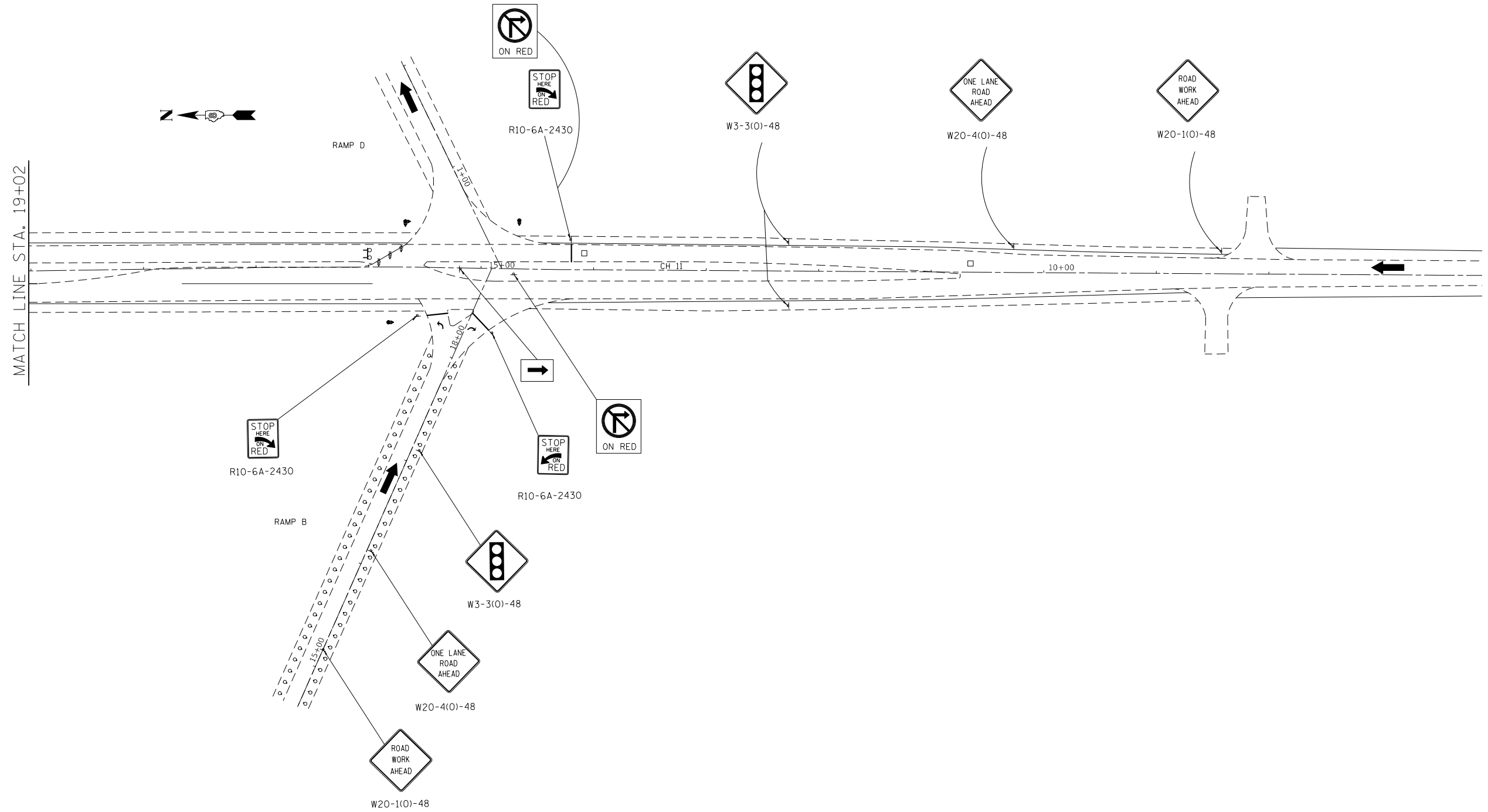
FILE NAME =	USER NAME = gelnh	DESIGNED - _____	REVISED - _____
pw:\planroom.dot.illinois.gov\PIDOT\Documents\IDOT Offices\District 8\Projects\0876N46\0876N46-CAD\sheets\0876N46-shr-staging.dwg		CHECKED - _____	REVISED - _____
MODELNAME	PLOT DATE = 2/5/2020	DATE - _____	REVISED - _____

STATE OF ILLINOIS
DEPARTMENT OF TRANSPORTATION



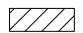
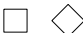




STAGE II CONSTRUCTION
IL ROUTE 50

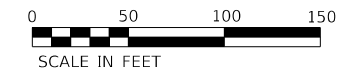
SHEET ____ OF ____ SHEETS STA. _____ TO STA. _____

FAP RTE.	SECTION	COUNTY	TOTAL SHEETS	SHEET NO.
327	14-14HB-2-BP-1	CLINTON	24	22
CONTRACT NO. 76N46				
ILLINOIS FED. AID PROJECT				



LEGEND

-  DIRECTION INDICATOR BARRICADE WITH STEADY BURN MONODIRECTIONAL LIGHT
-  TRAFFIC SIGNAL
-  WORK AREA
-  DETECTOR LOOPS
-  DRUM WITH STEADY BURNING BI-DIRECTIONAL LIGHT
-  SIGN
-  TRAFFIC DIRECTION ARROW
-  TYPE III BARRICADE WITH FLASHING LIGHTS



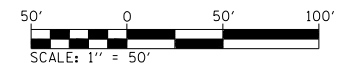
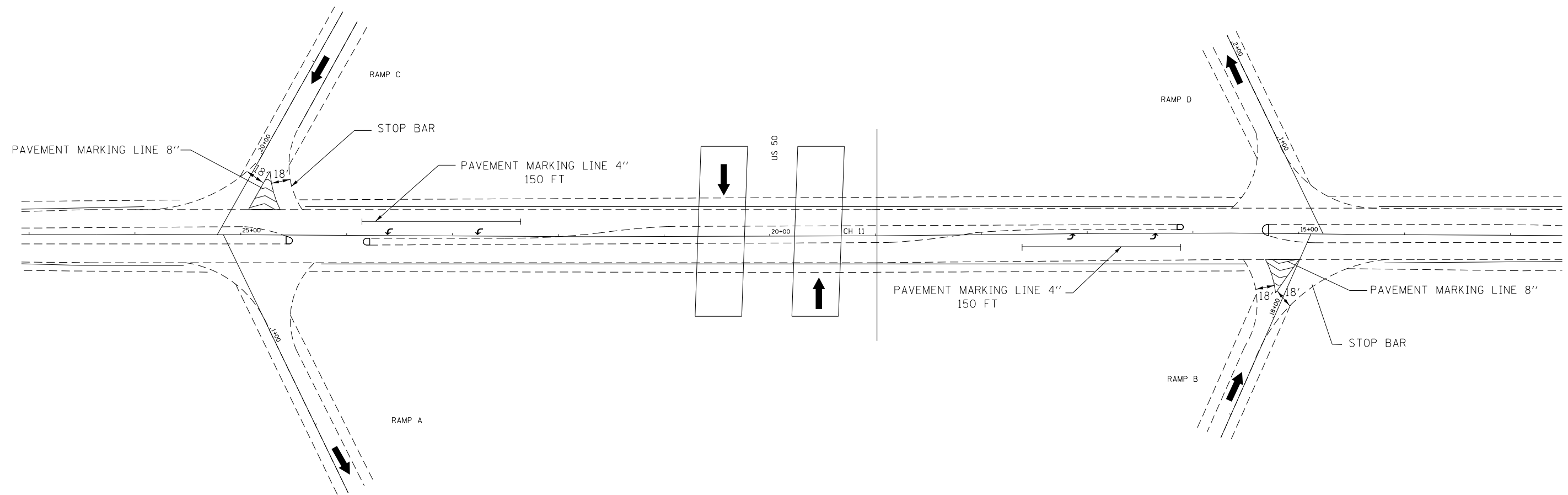
FILE NAME =	USER NAME = gelinh	DESIGNED - _____	REVISED - _____
pw:\planroom.dot.illinois.gov\PIDOT\Documents\IDOT Offices\District 8\Projects\0876N46\BRAN to CAD\sheets\0876N46-shr-staging.dwg		CHECKED - _____	REVISED - _____
MODELNAME	PLOT SCALE = 100.0000' / in.	DATE - _____	REVISED - _____
	PLOT DATE = 2/5/2020		

STATE OF ILLINOIS
DEPARTMENT OF TRANSPORTATION

STAGE II CONSTRUCTION
IL ROUTE 50

SHEET ___ OF ___ SHEETS STA. _____ TO STA. _____

FAP RTE.	SECTION	COUNTY	TOTAL SHEETS	SHEET NO.
327	14-14HB-2-BP-1	CLINTON	24	23
ILLINOIS FED. AID PROJECT			CONTRACT NO. 76N46	



FILE NAME =	USER NAME = gelnh	DESIGNED - _____	REVISED - _____
pw:\planroom.dot\illinois.gov\PIDOT\Documents\IDOT Offices\District 8\Projects\0876N46\BRANN\CAD\sheets\0876N46-sht-plan.dgn		CHECKED - _____	REVISED - _____
MODELNAME	PLOT SCALE = 100.0000' / in.	DATE - _____	REVISED - _____
	PLOT DATE = 2/5/2020		

**STATE OF ILLINOIS
DEPARTMENT OF TRANSPORTATION**

**PROPOSED PAVEMENT MARKING
CH 11**

FAP	SECTION	COUNTY	TOTAL SHEETS	SHEET NO.
327	14-14HB-2-BP-1	CLINTON	24	24
			CONTRACT NO. 76N46	
ILLINOIS FED. AID PROJECT				

SHEET ___ OF ___ SHEETS STA. _____ TO STA. _____