

STATE OF ILLINOIS
DEPARTMENT OF TRANSPORTATION

F.A.P. RTE.	SECTION	COUNTY	TOTAL SHEETS	SHEET NO.
322	D5 CM PATCH 2020-5		13	1
DEWITT & MCLEAN		ILLINOIS	CONTRACT NO. 70E40	

FOR INDEX OF SHEETS, SEE SHEET NO. 2
FOR SUMMARY OF QUANTITIES, SEE SHEET NO. 5

CURRENT TRAFFIC DATA

FAP 322 (US 51)	Leg "A"	Leg "B"	Leg "C"	Leg "D"	Leg "E"	Leg "F"
2019 ADT	= 14,500	12,500	11,600	9,700	7,200	9,700
P.V. %	= 88.7	88.8	89.1	87.7	85.1	86.1
S.U. %	= 4.7	4.0	3.2	2.8	3.8	4.4
M.U. %	= 6.6	7.2	7.7	9.5	11.1	8.5
TRUCK RTE.	= CLASS II	CLASS II	CLASS II	CLASS II	CLASS II	CLASS II
N.H.S. RTE.	= YES	YES	YES	YES	YES	YES

Leg "A" is US 51 from I-74 to Old Colonial Rd in McLean County.
Leg "B" is US 51 from Old Colonial Rd to Crestwicke Rd in McLean County.
Leg "C" is US 51 from Crestwicke Rd to US 136 in McLean County.
Leg "D" is US 51 from US 136 in McLean Co. to US 51 Bus North in DeWitt Co.
Leg "E" is US 51 from US 51 Bus North to US 51 Bus South in DeWitt Co.
Leg "F" is US 51 from US 51 Bus South to the DeWitt/Macon County line.

DESIGN DESIGNATION

FREEWAY

TOWNSHIPS

MCLEAN COUNTY
RANDOLPH

DEWITT COUNTY
WAPELLA
CLINTONIA
TEXAS



FULL SIZE PLANS HAVE BEEN PREPARED USING STANDARD ENGINEERING SCALES. REDUCED SIZED PLANS WILL NOT CONFORM TO STANDARD SCALES. IN MAKING MEASUREMENTS ON REDUCED PLANS, THE ABOVE SCALES MAY BE USED.

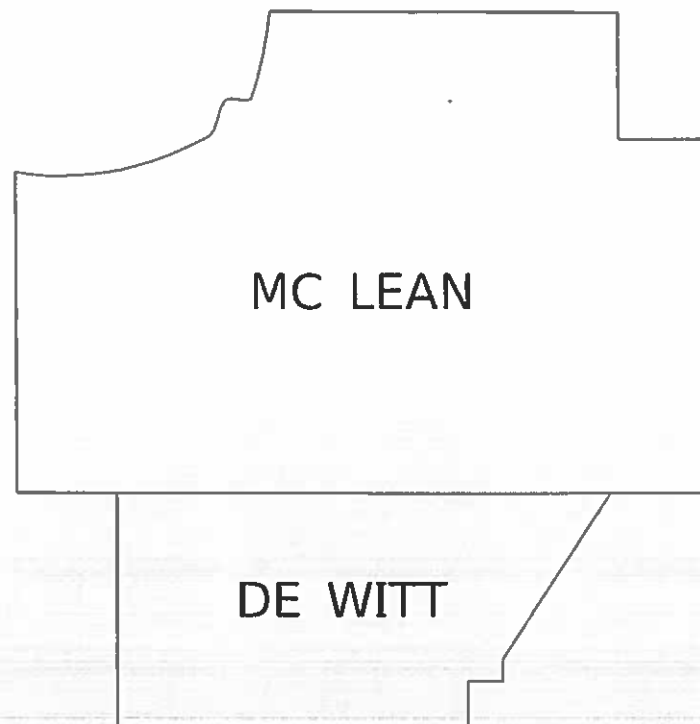
J.U.L.I.E.
JOINT UTILITY LOCATION INFORMATION FOR EXCAVATORS
1-800-892-0123
OR 811

PROJECT ENGINEER: JASON STULTS, P.E.
SQUAD LEADER: CLARE CURTIN
DESIGNER: JOHN CARTER & LEONEL RODRIGUEZ
PHONE: 217-465-4181
CONTRACT NO. 70E40

**PROPOSED
HIGHWAY PLANS**

FAP ROUTE 322 (US ROUTE 51)
SECTION D5 CM PATCH 2020-5
PROJECT
PATCHING
DEWITT & MCLEAN COUNTIES

MACON/DEWITT COUNTY LINE TO
I-74 IN BLOOMINGTON
C-95-024-20



D-95-009-20



LOCATION OF SECTION INDICATED THUS: - [shaded box] -

FOR LOCATION MAPS SEE SHEETS 3 & 4

GROSS LENGTH = 134,907 FT. = 25.55 MILE
NET LENGTH = 134,907 FT. = 25.55 MILE

STATE OF ILLINOIS
DEPARTMENT OF TRANSPORTATION

SUBMITTED 01/29 2020
Kerola Hamilton
REGIONAL ENGINEER

March 20 2020
cc E.A. Elk
ENGINEER OF DESIGN AND ENVIRONMENT

March 20 2020
Osman, Qun
DIRECTOR OF HIGHWAYS PROJECT IMPLEMENTATION 13

PRINTED BY THE AUTHORITY
OF THE STATE OF ILLINOIS

INDEX OF SHEETS

- 1 COVER SHEET
- 2 INDEX OF SHEETS
- 2 HIGHWAY STANDARDS
- 2 GENERAL NOTES
- 3-4 LOCATION MAPS
- 5-6 SUMMARY OF QUANTITIES
- 7 TYPICAL CROSS SECTIONS
- 8-10 SCHEDULE OF QUANTITIES
- 11-12 DETAIL FOR CLASS A PATCHES (SPECIAL)
- 13 DETAIL FOR EXISTING WIDE FLANGE BEAM TERMINAL JOINT

LIST OF HIGHWAY STANDARDS

- 000001-07 STANDARD SYMBOLS, ABBREVIATIONS AND PATTERNS
- 001001-02 AREAS OF REINFORCEMENT BARS
- 001006 DECIMAL OF AN INCH AND OF A FOOT
- 420001-09 PAVEMENT JOINTS
- 701101-05 OFF-RD OPERATIONS, MULTILANE, 15' (4.5M) TO 24" (600MM) FROM PAVEMENT
- 701106-02 OFF-RD OPERATIONS, MULTILANE, MORE THAN 15' (4.5M) AWAY
- 701400-09 APPROACH TO LANE CLOSURE, FREEWAY/EXPRESSWAY
- 701401-12 LANE CLOSURE, FREEWAY/EXPRESSWAY
- 701411-09 LANE CLOSURE, MULTILANE, AT ENTRANCE OR EXIT RAMP FOR SPEEDS > 45 MPH
- 701422-10 LANE CLOSURE, MULTILANE, FOR SPEEDS > 45 MPH TO 55 MPH
- 701426-09 LANE CLOSURE, MULTILANE, INTERMITTENT OR MOVING OPER., FOR SPEEDS ≥ 45 MPH
- 701701-10 URBAN LANE CLOSURE, MULTILANE INTERSECTION
- 701901-08 TRAFFIC CONTROL DEVICES

GENERAL NOTES

G.N.-100A
ELECTRONIC FILES AND/OR ELECTRONIC SURVEY INFORMATION INCLUDING CADD FILES WILL NOT BE AVAILABLE TO THE CONTRACTOR.

GN 105.07C
EXISTING STATE-OWNED AND MAINTAINED UNDERGROUND UTILITY FACILITIES EXIST WITHIN THE ROW. THE DEPARTMENT IS NOT A MEMBER OF JULIE AND DOES NOT LOCATE IT'S OWN FACILITIES. THE CONTRACTOR SHALL BE RESPONSIBLE AT THEIR OWN EXPENSE FOR SECURING AN APPROVED LOCATING FIRM TO LOCATE ALL EXISTING IDOT UNDERGROUND FACILITIES PRIOR TO COMMENCING ANY EXCAVATION, PER THE REQUIREMENTS OF ARTICLE 803 OF THE STANDARD SPECIFICATIONS. UTILITY LOCATES MAY ALSO BE REQUIRED OUTSIDE THE PROJECT LIMITS, SUCH AS FOR TRAFFIC CONTROL SIGNING AND OTHER ITEMS. THE CONTRACTOR MAY OBTAIN, ON REQUEST, PLANS OF EXISTING ELECTRICAL FACILITIES FROM THE DEPARTMENT. FOR FURTHER INFORMATION, THE CONTRACTOR MAY CONTACT THE DISTRICT TRAFFIC OPERATIONS ENGINEER, GARY SIMS, AT 217-251-4859.

G.N.- 442B - PATCHING SCHEDULES
THE PATCHING SCHEDULES INCLUDED IN THE PLANS REPRESENT THE BEST INFORMATION AVAILABLE AT THE TIME OF COMPLETION OF THE PLANS FOR LETTING. VARIATIONS IN LOCATION AND SIZES OF THE FULL-DEPTH AND PARTIAL-DEPTH PATCHES MAY OCCUR.

G.N.-780 (SPL)
PAVEMENT MARKING FOR THIS PROJECT IS TO BE PERFORMED BY OTHERS, FIELD PERSONNEL SHALL NOTIFY GARY SIMS, DISTRICT 5 TRAFFIC OPERATIONS ENGINEER AT (217) 465-4181 WHEN THE PROJECT IS COMPLETE AND READY FOR PAVEMENT MARKINGS.

NO COMMITMENTS

MODEL: \\MODEL\MHFS
 FILE: \\MAILS_PUB\pubmail\comad\illinois.gov\RWIDOT\Documents\IDOT_Offices\District_5\Projects\0570E-01\CADDData\CAD\patches\0570E-01-01-01-GenNotes.dgn

USER NAME = carterjp	DESIGNED - JRG	REVISED -
	DRAWN - JRG	REVISED -
PLOT SCALE = 40.0000 ' / in.	CHECKED -	REVISED -
PLOT DATE = 1/28/2020	DATE -	REVISED -

**STATE OF ILLINOIS
DEPARTMENT OF TRANSPORTATION**

**INDEX OF SHEETS, HIGHWAY STANDARDS
COMMITMENTS, GENERAL NOTES**

SCALE: N-T-S SHEET 1 OF 1 SHEETS STA. TO STA.

F.A.P. RTE.	SECTION	COUNTY	TOTAL SHEETS	SHEET NO.
322	D5 CM PATCH 2020-5	*	13	2
* DEWITT & MCLEAN		CONTRACT NO. 70E40		
ILLINOIS FED. AID PROJECT				

STA. 1555+69.05 BK. = STA. 155+82.95

RURAL

STA. 1360+48

URBAN

STA. 756+00

RURAL

STA. 694+00

URBAN

STA. 897+75

RURAL

STA. 286+64.91

STATION EQUATION:
STA. 1555+69.05 BK. = STA. 155+82.95 AH.
DEWITT / MCLEAN COUNTY LINE



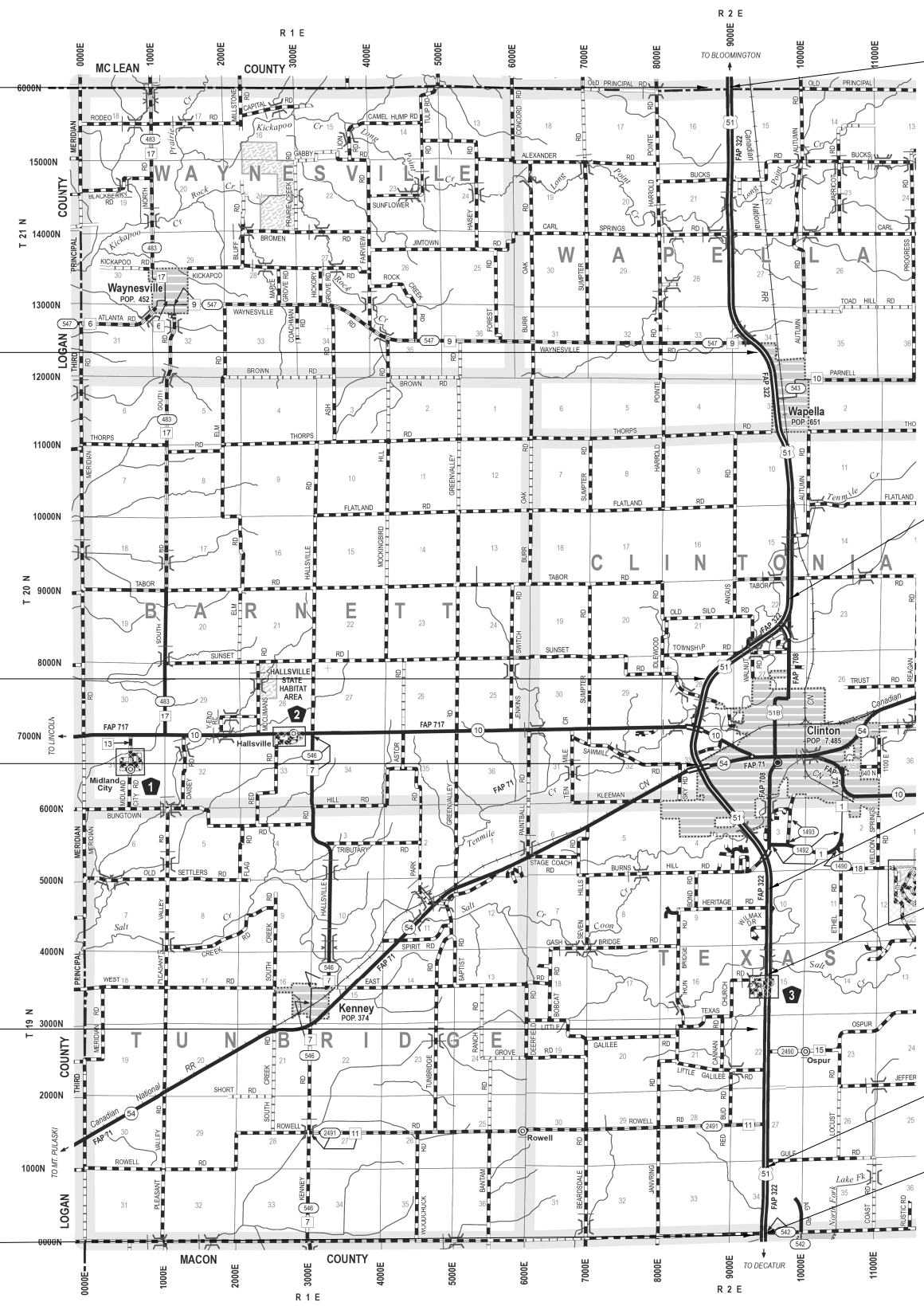
STATION EQUATION:
802+56.61 BK = 1165+21.68 AH

STATION EQUATION:
STA. 944+00.00 BK = 544+42.74 AH

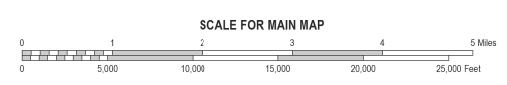
STATION EQUATION:
STA. 880+16.13 BK = 880+15.45 AH

STATION EQUATION:
STA. 335+00.00 BK = 736+14.79 AH

PROJECT BEGINS:
STA. 286+64.91
MACON / DEWITT COUNTY LINE



DEWITT COUNTY



LENGTH = 90,482 FT. = 17.14 MILE

MODEL: \\MODEL\MAME
 FILE: \\MAILS_P\pub\mcom\dm\dm\illinois\gov\RWIDOT\Documents\DOT_Offices\District_5\Projects\0570E-00\CADD\DATA\CAD\Sheet\0570E-00-01-locsbm.mxd

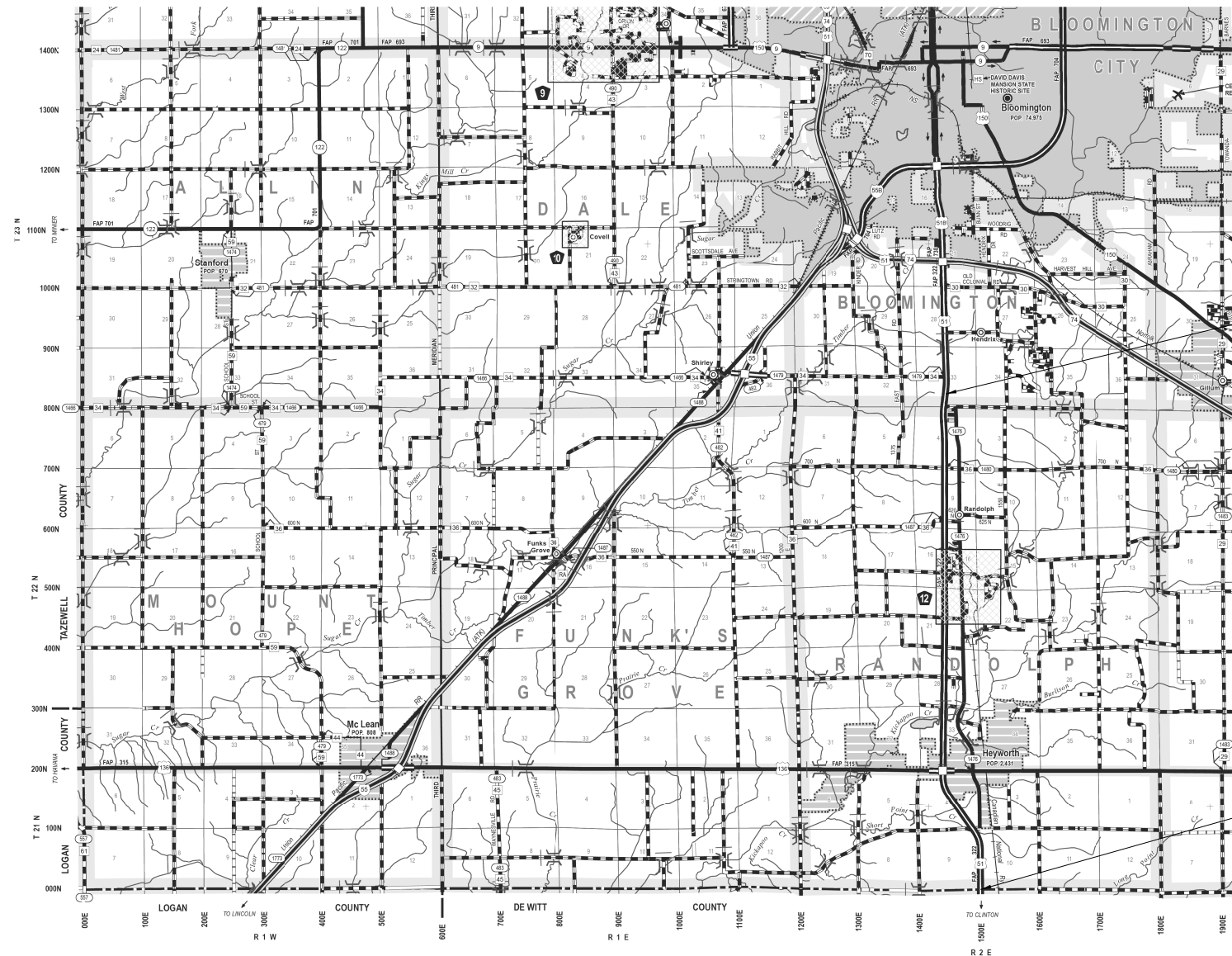
USER NAME = carterjp	DESIGNED -	REVISED -
	DRAWN -	REVISED -
PLOT SCALE = 40,0000' / in.	CHECKED -	REVISED -
PLOT DATE = 1/29/2020	DATE -	REVISED -

**STATE OF ILLINOIS
DEPARTMENT OF TRANSPORTATION**

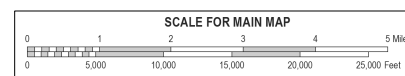
LOCATION MAP

SCALE: SHEET 1 OF 2 SHEETS STA. TO STA.

F.A.P. RTE.	SECTION	COUNTY	TOTAL SHEETS	SHEET NO.
322	D5 CM PATCH 2020-5		13	3
CONTRACT NO. 70E40				
ILLINOIS FED. AID PROJECT				



MCLEAN COUNTY



LENGTH = 44,425 FT. = 8.41 MILE

MODEL: \\MODEL\MAME
 FILE: \\NAME: \\pub\mcom\mdata\illinois\pwr\DOT\Documents\DOT_Offices\District_5\Projects\0570E\04\ch4-locsbm\Map

USER NAME = carterjp	DESIGNED -	REVISED -
	DRAWN -	REVISED -
PLOT SCALE = 40,0000' / in.	CHECKED -	REVISED -
PLOT DATE = 1/29/2020	DATE -	REVISED -

**STATE OF ILLINOIS
DEPARTMENT OF TRANSPORTATION**

LOCATION MAP

SCALE: SHEET 2 OF 2 SHEETS STA. TO STA.

F.A.P. RTE.	SECTION	COUNTY	TOTAL SHEETS	SHEET NO.
322	D5 CM PATCH 2020-5	-	13	4
CONTRACT NO. 70E40				
ILLINOIS FED. AID PROJECT				

SUMMARY OF QUANTITIES

LOCATION OF WORK:	FAP 322 (US 51)	FAP 322 (US 51)	FAP 322 (US 51)
	RURAL	URBAN	RURAL
	FREEWAY	FREEWAY	FREEWAY
	STA. 286+64.91 TO STA. 897+75 AND 694+00 TO 756+00 AND 1360+48 TO	STA. 897+75 TO 694+00 AND STA. 756+00 TO STA. 1360+48	STA. 155+82.95 TO STA. 600+08.38
	DEWITT COUNTY	DEWITT COUNTY	MCLEAN COUNTY
FUNDING BREAKOUT:	100% STATE	100% STATE	100% STATE
CONSTRUCTION TYPE CODE:	0006	0006	0006

CODE NO.	ITEM	UNIT	TOTAL QUANTITY	QUANTITY	QUANTITY	QUANTITY
44213000	PATCHING REINFORCEMENT	SQ YD	1,205.0	517.0	445.0	243.0
44213200	SAW CUTS	FOOT	4,072.0	1,610.0	1,594.0	868.0
44213204	TIE BARS 3/4"	EACH	1,815.0	666.0	687.0	462.0
67100100	MOBILIZATION	L SUM	1.0	0.4	0.4	0.2
70100320	TRAFFIC CONTROL AND PROTECTION, STANDARD 701422	LSUM	1.0	0.4	0.4	0.2
70100420	TRAFFIC CONTROL AND PROTECTION, STANDARD 701411	EACH	4.0	0.0	0.0	4.0
70100800	TRAFFIC CONTROL AND PROTECTION, STANDARD 701401	LSUM	1.0	0.4	0.4	0.2
70102635	TRAFFIC CONTROL AND PROTECTION, STANDARD 701701	LSUM	1.0	0.4	0.4	0.2
70103815	TRAFFIC CONTROL SURVEILLANCE	CAL DAY	12.0	5.0	5.0	2.0
70107025	CHANGEABLE MESSAGE SIGN	CAL DAY	6.0	3.0	0.0	3.0
X1700018	CLASS A PATCH EXPANSION JOINT	FOOT	444.0	96.0	144.0	204.0
X4420201	PAVEMENT PATCHING (SPECIAL)	SQ YD	112.0	16.0	96.0	0.0
X4420545	CLASS A PATCHES, TYPE II, 9 INCH (SPECIAL)	SQ YD	203.0	0.0	0.0	203.0
* DENOTES SPECIALTY ITEM						

MODEL: I:\MODEL\MH\MS
FILE: MH\MS: P:\pub\mcom\mdata\illinois\pwr\DOT\Documents\DOT_Offices\Illinet\5\Projects\0570E40\CADDData\CAD\Sheet0570E40-CH-500.dgn

USER NAME = carterjo	DESIGNED - JRG	REVISED -
	DRAWN - JRG	REVISED -
PLOT SCALE = 40.0000 ' / in.	CHECKED -	REVISED -
PLOT DATE = 1/28/2020	DATE -	REVISED -

**STATE OF ILLINOIS
DEPARTMENT OF TRANSPORTATION**

SUMMARY OF QUANTITIES

SCALE: N-T-S SHEET 1 OF 2 SHEETS STA. TO STA.

F.A.P. RTE.	SECTION	COUNTY	TOTAL SHEETS	SHEET NO.
322	D5 CM PATCH 2020-5	*	13	5
* DEWITT & MCLEAN			CONTRACT NO. 70E40	
ILLINOIS FED. AID PROJECT				

LOCATION OF WORK:

FAP 322 (US 51)	FAP 322 (US 51)	FAP 322 (US 51)
RURAL	URBAN	RURAL
FREEWAY	FREEWAY	FREEWAY
STA. 286+64.91 TO STA. 897+75 AND 694+00 TO 756+00	STA. 897+75 694+00 AND STA. 756+00 TO STA. 1360+48	STA. 155+82.95 TO STA. 600+08.38
DEWITT COUNTY	DEWITT COUNTY	MCLEAN COUNTY
FUNDING BREAKOUT:	100% STATE	100% STATE
CONSTRUCTION TYPE CODE:	0006	0006

CODE NO.	ITEM	UNIT	TOTAL QUANTITY	QUANTITY	QUANTITY	QUANTITY
X4420547	CLASS A PATCHES, TYPE III, 9 INCH (SPECIAL)	SQ YD	40.0	0.0	0.0	40.0
X4420551	CLASS A PATCHES, TYPE I, 10 INCH (SPECIAL)	SQ YD	20.0	16.0	4.0	0.0
X4420553	CLASS A PATCHES, TYPE II, 10 INCH (SPECIAL)	SQ YD	349.0	198.0	151.0	0.0
X4420557	CLASS A PATCHES, TYPE III, 10 INCH (SPECIAL)	SQ YD	80.0	40.0	40.0	0.0
X4420559	CLASS A PATCHES, TYPE IV, 10 INCH (SPECIAL)	SQ YD	401.0	247.0	154.0	0.0
* DENOTES SPECIALTY ITEM						

MODEL: \\P:\ADMIN\DATA\ILLINOIS\DOT\PROJECTS\DOT_Offices\District_3\Projects\DE70E4D\CADD\DATA\CAD\ Sheets\DE70E4D-ph-500.dgn
 FILE NAME: \\P:\ADMIN\DATA\ILLINOIS\DOT\PROJECTS\DOT_Offices\District_3\Projects\DE70E4D\CADD\DATA\CAD\ Sheets\DE70E4D-ph-500.dgn

USER NAME = carterjp	DESIGNED -	REVISED -
PLOT SCALE = 40.0000' / in.	DRAWN -	REVISED -
PLOT DATE = 1/28/2020	CHECKED -	REVISED -
	DATE -	REVISED -

**STATE OF ILLINOIS
DEPARTMENT OF TRANSPORTATION**

SUMMARY OF QUANTITIES

SCALE: SHEET 2 OF 2 SHEETS STA. TO STA.

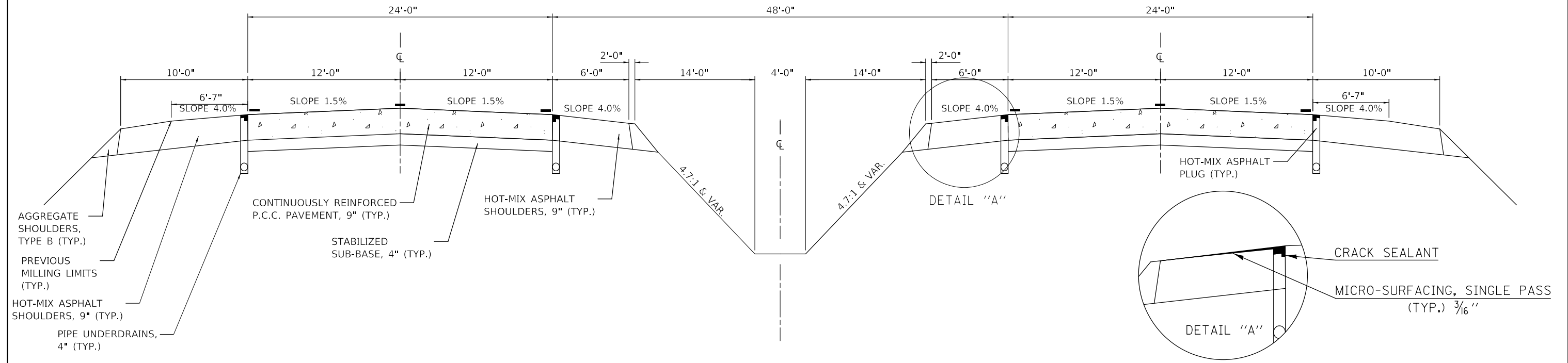
F.A.P. RTE.	SECTION	COUNTY	TOTAL SHEETS	SHEET NO.
322	D5 CM PATCH 2020-5	*	13	6
* DEWITT & MCLEAN		CONTRACT NO. 70E40		
ILLINOIS FED. AID PROJECT				

1 EXISTING TYPICAL SECTION

STATION TO STATION
286+64.91 TO 1551+93.23 ②

STATION EQUATIONS

335+00.00 BK = 736+14.79 AH
 880+16.13 BK = 880+15.45 AH
 944+00.00 BK = 544+42.74 AH
 802+56.61 BK = 1165+21.68 AH

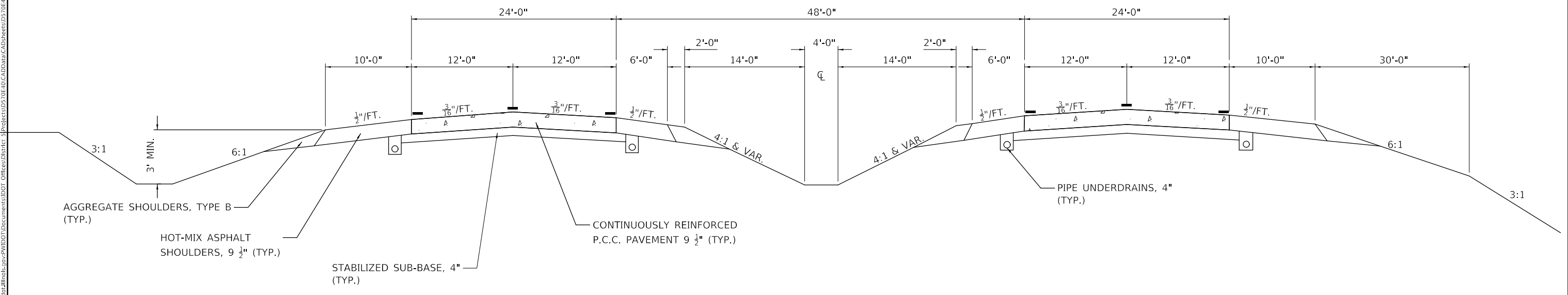


2 EXISTING TYPICAL SECTION

STATION TO STATION
① 1551+93.23 TO 600+08.38

STATION EQUATION

1555+69.05 BK = 155+82.95 AH



MODEL: \\MODEL\MAR\F...
 FILE: \\MAR\F...
 PROJECT: \\PROJECTS\...
 OFFICE: \\OFFICE\...
 DRAWING: \\DRAWING\...
 DATE: 1/28/2020

USER NAME = carterjp	DESIGNED - JRG	REVISED -
	DRAWN - JRG	REVISED -
PLOT SCALE = 40.0000' / in.	CHECKED -	REVISED -
PLOT DATE = 1/28/2020	DATE -	REVISED -

**STATE OF ILLINOIS
 DEPARTMENT OF TRANSPORTATION**

**TYPICAL CROSS SECTIONS
 FAP 322 (US ROUTE 51)**

SCALE: N-T-S SHEET 1 OF 1 SHEETS STA. 286+64.91 TO STA. 1333+80.00

F.A.P. RTE.	SECTION	COUNTY	TOTAL SHEETS	SHEET NO.
322	D5 CM PATCH 2020-5	*	13	7
*DEWITT & MCLEAN		CONTRACT NO. 70E40		
ILLINOIS FED. AID PROJECT				

SCHEDULE OF QUANTITIES

MCLEAN COUNTY

CLASS A PATCHES, 9" (SPECIAL)

APPROX.	STATION	DIR	LANE	LENGTH	WIDTH	SQ YD	TYPICAL	DESCRIPTION	CLASS A PATCHES, TYPE II, 9 INCH SPECIAL (SQ YD)	SAW CUTS (FT)	TIE BARS 3/4" TRANVERSE (EACH)	PATCHING REINFORCEMENT (SQ. YD)	CLASS A PATCH EXPANSION JOINT (FT)
									RURAL	RURAL	RURAL	RURAL	RURAL
									X4420545	44213200	44213204	44213000	X1700018
US51: McLean County													
	318+83	SB	DL	8	12	10.67	2	Expansion patch N. side of Kickapoo Creek	10.67	40.0	22.0	10.67	12.0
	318+83	SB	PL	8	12	10.67	2	Bridge between B/W abutment and WFBJ	10.67	40.0	22.0	10.67	12.0
	314+90	SB	DL	6	12	8.00	2	S. side of Kickapoo Creek Bridge between abutment and steel beam	8.00	36.0	22.0	8.00	
	314+90	SB	PL	6	12	8.00	2		8.00	36.0	22.0	8.00	
	314+40	SB	DL	8	12	10.67	2	Expansion Patch-S. side of Kickapoo Creek	10.67	40.0	22.0	10.67	12.0
	314+40	SB	PL	8	12	10.67	2	Bridge between abutment and steel beam	10.67	40.0	22.0	10.67	12.0
	307+30	SB	DL	8	12	10.67	2	Expansion	10.67	40.0	22.0	10.67	12.0
	307+30	SB	PL	8	12	10.67	2		10.67	40.0	22.0	10.67	12.0
	269+50	SB	DL	8	12	10.67	2	Expansion Patch- N. side of US136 bridge between abutment and steel beam	10.67	40.0	22.0	10.67	12.0
	269+50	SB	PL	8	12	10.67	2		10.67	40.0	22.0	10.67	12.0
	265+80	SB	DL	8	12	10.67	2	Expansion Patch- S. side of US136 bridge between abutment and steel beam	10.67	40.0	22.0	10.67	12.0
	265+80	SB	PL	8	12	10.67	2		10.67	40.0	22.0	10.67	12.0
	233+50	SB	DL	6	12	8.00	2	existing failed PCC patch	8.00	36.0	22.0	8.00	
	233+50	SB	PL	6	12	8.00	2		8.00	36.0	22.0	8.00	
	TOTAL					333.56			138.67	544.0	308.0	138.67	120.0
	USE								139.0	544.0	308.0	139.0	120.0

CLASS A PATCHES, 9" (SPECIAL)

APPROX.	STATION	DIR	LANE	LENGTH	WIDTH	SQ YD	TYPICAL	DESCRIPTION	CLASS A PATCHES, TYPE II, 9 INCH SPECIAL (SQ YD)	CLASS A PATCHES, TYPE III, 9 INCH SPECIAL (SQ YD)	SAW CUTS (FT)	TIE BARS 3/4" TRANVERSE (EACH)	PATCHING REINFORCEMENT (SQ. YD)	CLASS A PATCH EXPANSION JOINT (FT)
									RURAL	RURAL	RURAL	RURAL	RURAL	RURAL
									X4420545	X4420547	44213200	44213204	44213000	X1700018
US51: McLean County														
	1552+42	NB	DL	10	12	13.33	2	Just N. of McLean/Dewitt County Line-Expansion patch	13.33		44.0	22.0	13.33	12.0
	1552+42	NB	PL	10	12	13.33	2		13.33		44.0	22.0	13.33	12.0
	1595+15	NB	DL	15	12	20.00	2	at Pavt blowup in curve-expansion patch		20.00	54.0	22.0	20.00	12.0
	1595+15	NB	PL	15	12	20.00	2			20.00	54.0	22.0	20.00	12.0
	265+60	NB	DL	8	12	10.67	2	S. side of US136 Bridge between abutment and steel	10.67		40.0	22.0	10.67	12.0
	279+15	NB	DL	10	12	13.33	2	Expansion Patch at Pavt blowup N. of US136	13.33		44.0	22.0	13.33	12.0
	279+15	NB	PL	10	12	13.33	2		13.33		44.0	22.0	13.33	12.0
	TOTALS					104.00			64.00	40.00	324.00	154.00	104.00	84.00
	USE								64.0	40.0	324.0	154.0	104.0	84.0

MODEL: I:\MODEL\MHMS
FILE: MHMS - Proj\Illinois\GIS\Projects\DOT - Office\Drawings\DOT - Office\Drawings\CADD\Drawings\CADD\Sheet\Schedule.dgn

USER NAME = CurtinCB	DESIGNED - JRG	REVISED -
	DRAWN - JRG	REVISED -
PLOT SCALE = 40.0000 ' / in.	CHECKED -	REVISED -
PLOT DATE = 1/29/2020	DATE -	REVISED -

**STATE OF ILLINOIS
DEPARTMENT OF TRANSPORTATION**

SCHEDULE OF QUANTITIES

SCALE: N-T-S SHEET 1 OF 3 SHEETS STA. TO STA.

F.A.P. RTE.	SECTION	COUNTY	TOTAL SHEETS	SHEET NO.
322	D5 CM PATCH 2020-5	*	13	8
* DEWITT & MCLEAN		CONTRACT NO. 70E40		
ILLINOIS		FED. AID PROJECT		

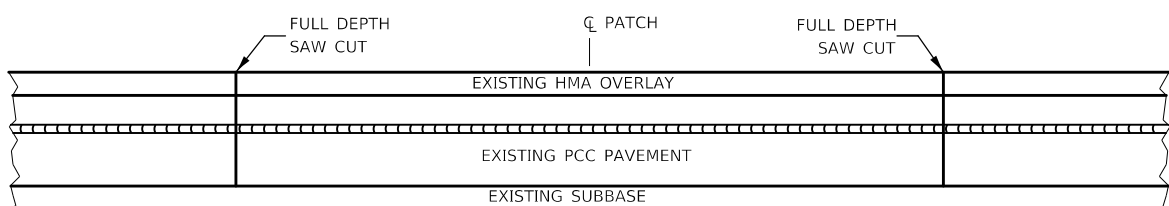
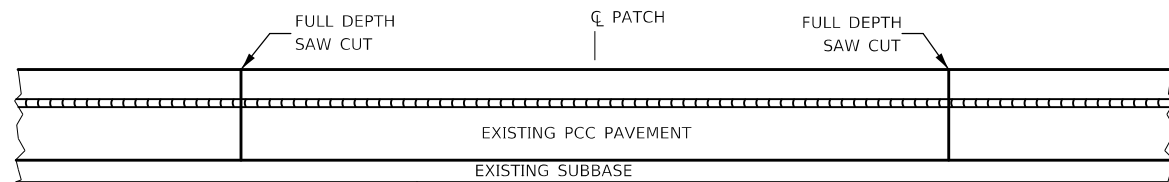
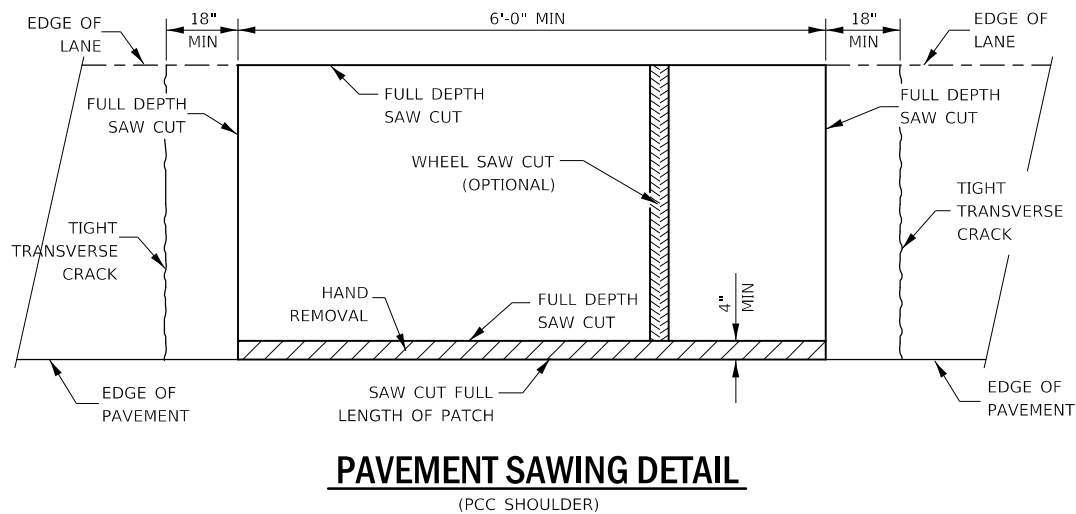
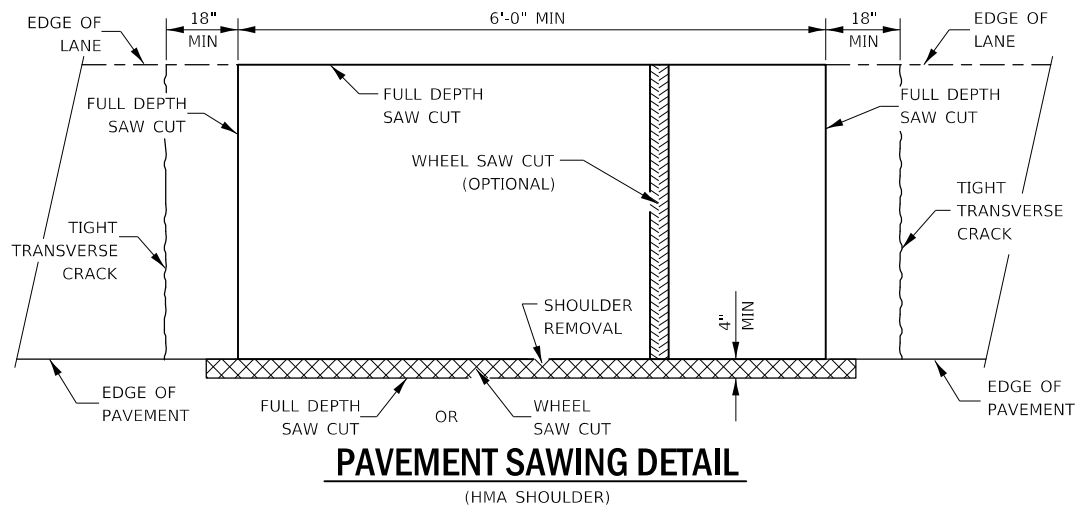
SCHEDULE OF QUANTITIES DEWITT COUNTY

CLASS A PATCHES, 10" (SPECIAL)

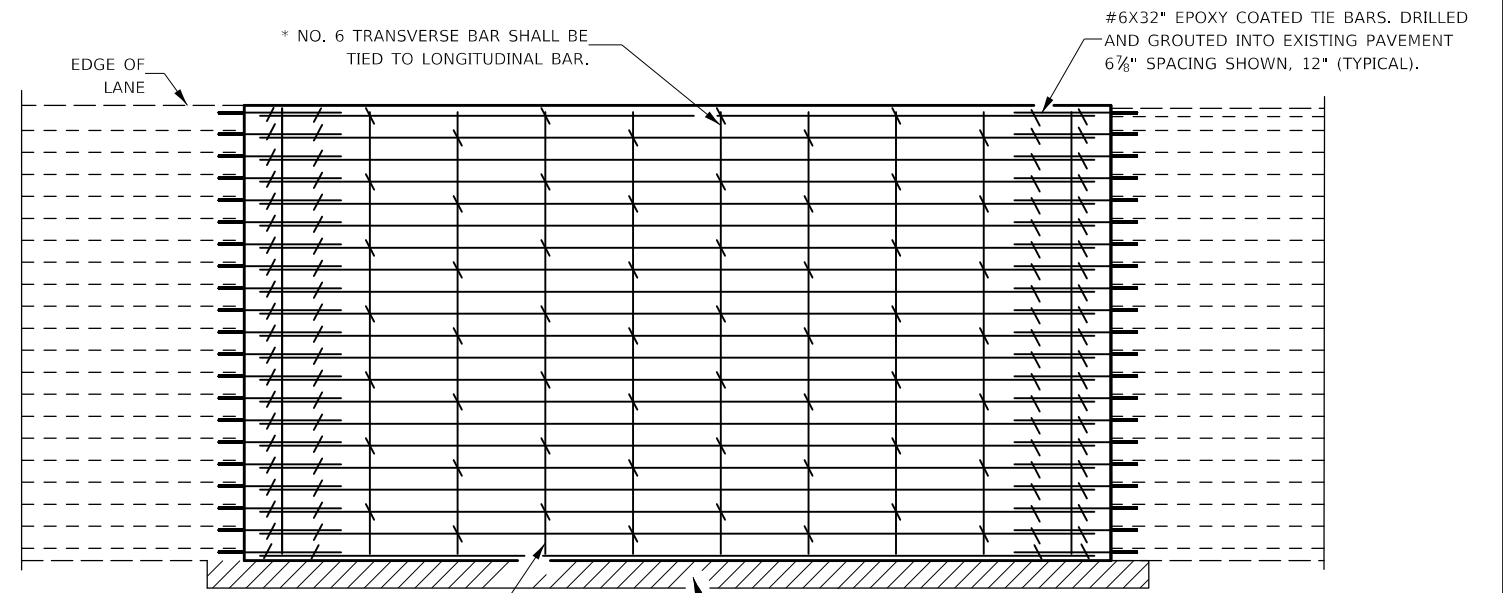
APPROX. STATION	DIR	LANE	LENGTH	WIDTH	SQ YD	TYPICAL	DESCRIPTION	CLASS A PATCHES, TYPE I, 10 INCH (SPECIAL) (SQ YD)		CLASS A PATCHES, TYPE II, 10 INCH (SPECIAL) (SQ YD)		CLASS A PATCHES, TYPE III, 10 INCH (SPECIAL) (SQ YD)		CLASS A PATCHES, TYPE IV, 10 INCH (SPECIAL) (SQ YD)		SAW CUTS (FT)		TIE BARS 3/4" TRANVERSE (EACH)		TIE BARS 3/4" LONGITUDINAL (EACH)		PATCHING REINFORCEMENT (SQ. YD)		CLASS A PATCH EXPANSION JOINT (FT)		PAVEMENT PATCHING (SPECIAL) (SQ YD)							
								RURAL	URBAN	RURAL	URBAN	RURAL	URBAN	RURAL	URBAN	RURAL	URBAN	RURAL	URBAN	RURAL	URBAN	RURAL	URBAN	RURAL	URBAN	RURAL	URBAN	RURAL	URBAN	RURAL	URBAN	RURAL	URBAN
								X4420553		X4420557		X4420559		44213200		44213204		44213204		44213000		X1700018		X4420201									
US51: Dewitt County																																	
1506+50	SB	DL	8	12	10.67	1	Expansion patch			10.67						40.0		22.0					10.67		12.0								
1506+50	SB	PL	8	12	10.67	1	Expansion patch			10.67						40.0		22.0				10.67		12.0									
1438+84	SB	DL	8	12	10.67	1	Expansion patch at side of N. side HMA patch-N. side of bridge			10.67						40.0		22.0				10.67		12.0									
1438+84	SB	PL	8	12	10.67	1				10.67							40.0		22.0				10.67		12.0								
1436+10	SB	DL	8	12	10.67	1	Expansion patch at side of N. side HMA patch-S. side of bridge			10.67						40.0		22.0				10.67		12.0									
1436+10	SB	DL	8	12	10.67	1				10.67							40.0		22.0				10.67		12.0								
1360+30	SB	DL	20	6	13.33	1				13.33							52.0		10.0		7.0		13.33										
1347+20	SB	DL	10	6	6.67	1	along centerline			6.67							32.0		10.0				6.67										
1346+37	SB	DL	20	12	26.67	1	existing failed PCC patch						26.67			64.0		22.0		7.0		26.67											
1300+77	SB	PL	6	12	8.00	1				8.00						36.0		22.0				8.00											
688+25	SB	DL	6	6	4.00	1	S.end of HMA patch S. of Ten Mile Creek		4.00							24.0		10.0				4.00											
676+42	SB	DL	8	6	5.33	1	IL-10 intersection			5.33						28.0		10.0				5.33											
650+70	SB	DL	6	12	8.00	1	wide flange beam terminal jt-expansion side									36.0		22.0				8.00				8.0							
650+70	SB	PL	6	12	8.00	1	wide flange beam terminal jt-expansion side									36.0		22.0				8.00				8.0							
650+70	SB	LTL	6	12	8.00	1	wide flange beam terminal jt-expansion side									36.0		22.0				8.00				8.0							
650+70	SB	RTL	6	12	8.00	1	wide flange beam terminal jt-expansion side									36.0		22.0				8.00				8.0							
589+90	SB	DL	6	12	8.00	1	wide flange beam terminal jt-expansion side									36.0		22.0				8.00				8.0							
589+90	SB	PL	6	12	8.00	1	wide flange beam terminal jt-expansion side									36.0		22.0				8.00				8.0							
544+60	SB	DL	8	12	10.67	1	expansion patch			10.67						40.0		22.0				10.67		12.0									
544+60	SB	PL	8	12	10.67	1	expansion patch			10.67						40.0		22.0				10.67		12.0									
780+13	SB	DL	8	12	10.67	1	expansion patch			10.67						40.0		22.0				10.67		12.0									
780+13	SB	PL	8	12	10.67	1	expansion patch			10.67						40.0		22.0				10.67		12.0									
312+07	SB	PL	8	6	5.33	1				5.33						28.0		10.0				5.33											
311+95	SB	PL	15	6	10.00	1				10.00						42.0		10.0				10.00											
310+10	SB	PL	40	6	26.67	1							26.67			92.0		10.0		14.0		26.67											
308+20	SB	DL	30	6	20.00	1				20.00						72.0		10.0		11.0		20.00											
308+00	SB	DL	8	6	5.33	1				5.33						28.0		10.0				5.33											
308+00	SB	PL	20	6	13.33	1				13.33						52.0		10.0		7.0		13.33											
					0.00																												
					0.00																												
TOTAL					299.33					0.00	4.00	119.33	54.67	20.00	0.00	26.67	26.67	634.0	532.0	236.0	260.0	32.0	14.0	166.00	133.33	96.0	24.0	0.00	48.00				
USE										0.0	4.0	120.0	55.0	20.0	0.0	27.0	27.0	634.0	532.0	236.0	260.0	32.0	14.0	167.0	134.0	96.0	24.0	0.0	48.0				

MODEL: \\MODEL\MAT5
 FILE NAME: P:\2016\Illinois\DOT\Documents\DOT - Offices\Illinois\DOT\2016\DOT\Schedulr.dgn

USER NAME = CurtinCB DESIGNATED - JRG DRAWN - JRG PLOT SCALE = 40.0000 "/>	DESIGNED - JRG REVISIONS - CHECKED - DATE -	STATE OF ILLINOIS DEPARTMENT OF TRANSPORTATION	SCHEDULE OF QUANTITIES	F.A.P. RTE. 322	SECTION D5 CM PATCH 2020-5 * DEWITT & MCLEAN	COUNTY *	TOTAL SHEETS 13	SHEET NO. 9
				SCALE: N-T-S		SHEET 2 OF 3 SHEETS STA. TO STA.		
				ILLINOIS FED. AID PROJECT CONTRACT NO. 70E40				

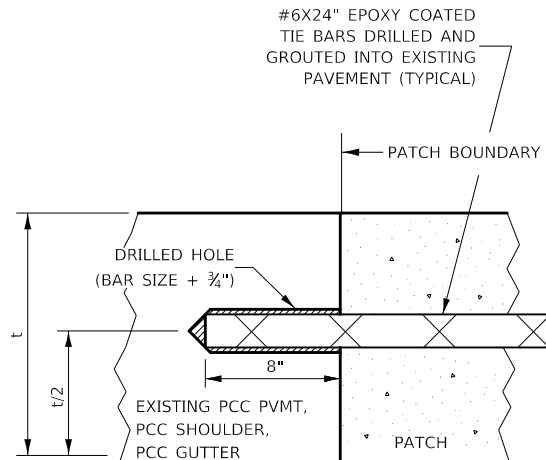


PAVEMENT SAWING DETAIL FOR CLASS A PATCHING (CRC PAVEMENT)



TRANSVERSE REBAR SHALL EXTEND TO OUTER LONGITUDINAL REBAR WHILE PROVIDING A MINIMUM 3" CLEARANCE FROM EXISTING PAVEMENT EDGE

PAVEMENT REINFORCEMENT DETAIL



LONGITUDINAL CONSTRUCTION JOINT

PATCHES MORE THAN 20' IN LENGTH SHALL BE TIED TO ADJACENT PAVEMENT, PCC SHOULDERS OR PCC CURB AND GUTTER WITH #6X24" EPOXY COATED TIE BARS AT 36" CENTERS.

NOTES:

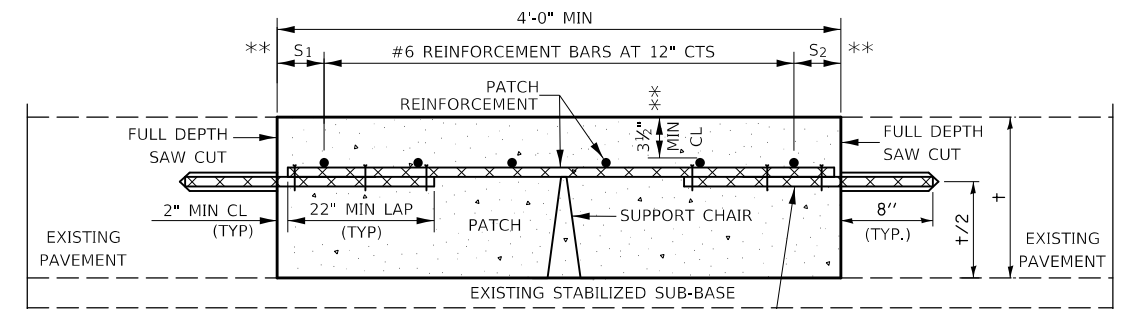
EXISTING TRANSVERSE REINFORCEMENT SPACING; $\pm 6\frac{7}{8}$ ".

SPACING OF NEW TRANSVERSE AND LONGITUDINAL REINFORCEMENT SHALL MATCH SPACING OF EXISTING REINFORCEMENT. SPACING OF NEW TRANSVERSE TIE BARS SHALL BE SPACED AT 12" CENTERS. TIE BARS AND REINFORCEMENT SHALL BE TIED TOGETHER WITH A MINIMUM OF TWO TIES PER BAR, WHEN ALIGNED.

SUPPORT CHAIRS SHALL BE REQUIRED WHENEVER PATCH LENGTH EXCEEDS 6'-0"

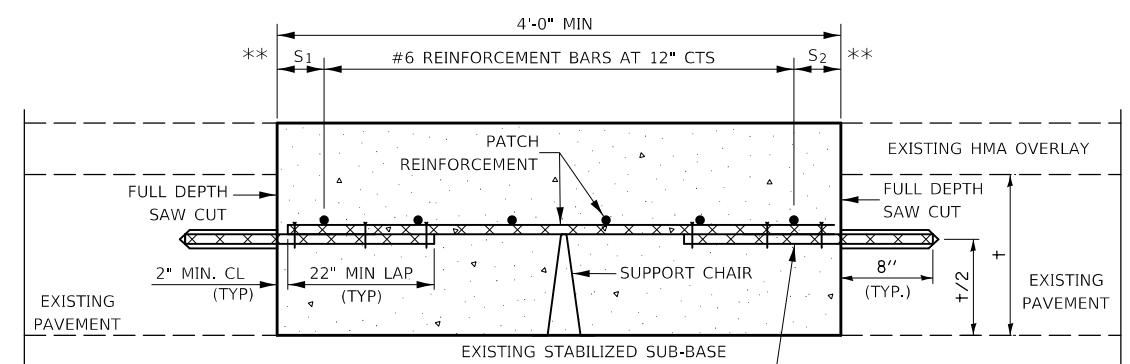
* EVERY THIRD INTERSECTION MUST BE TIED. WHEN THE MINIMUM CLEARANCE CANNOT BE OBTAINED WITH THE TRANSVERSE REBAR ON TOP, THEN THE TRANSVERSE REBAR SHALL BE TIED TO THE BOTTOM OF THE LONGITUDINAL REBAR.

** VARIABLES WHERE S₁ AND S₂ ARE 2 1/2" MIN. AND 12" MAX.



WITHOUT HMA OVERLAY

#6X32" EPOXY COATED TIE BARS DRILLED AND GROUTED INTO EXISTING PAVEMENT (TYPICAL)



WITH HMA OVERLAY

#6X32" EPOXY COATED TIE BARS DRILLED AND GROUTED INTO EXISTING PAVEMENT (TYPICAL)

PATCHING DETAIL FOR CLASS A PATCHING (CRC PAVEMENT)

MODEL: I:\MODEL\NAMES FILE NAME: P:\p\illinois\dot\Documents\DOT Office\Drawings\Projects\0570E40\CADD\DATA\CAD\PROJECTS\0570E40\CH-DR-ALL.dgn

USER NAME = carterjp	DESIGNED -	REVISED -
PLOT SCALE = 100,0000' / in.	DRAWN -	REVISED -
PLOT DATE = 1/28/2020	CHECKED -	REVISED -
	DATE -	REVISED -

STATE OF ILLINOIS
DEPARTMENT OF TRANSPORTATION

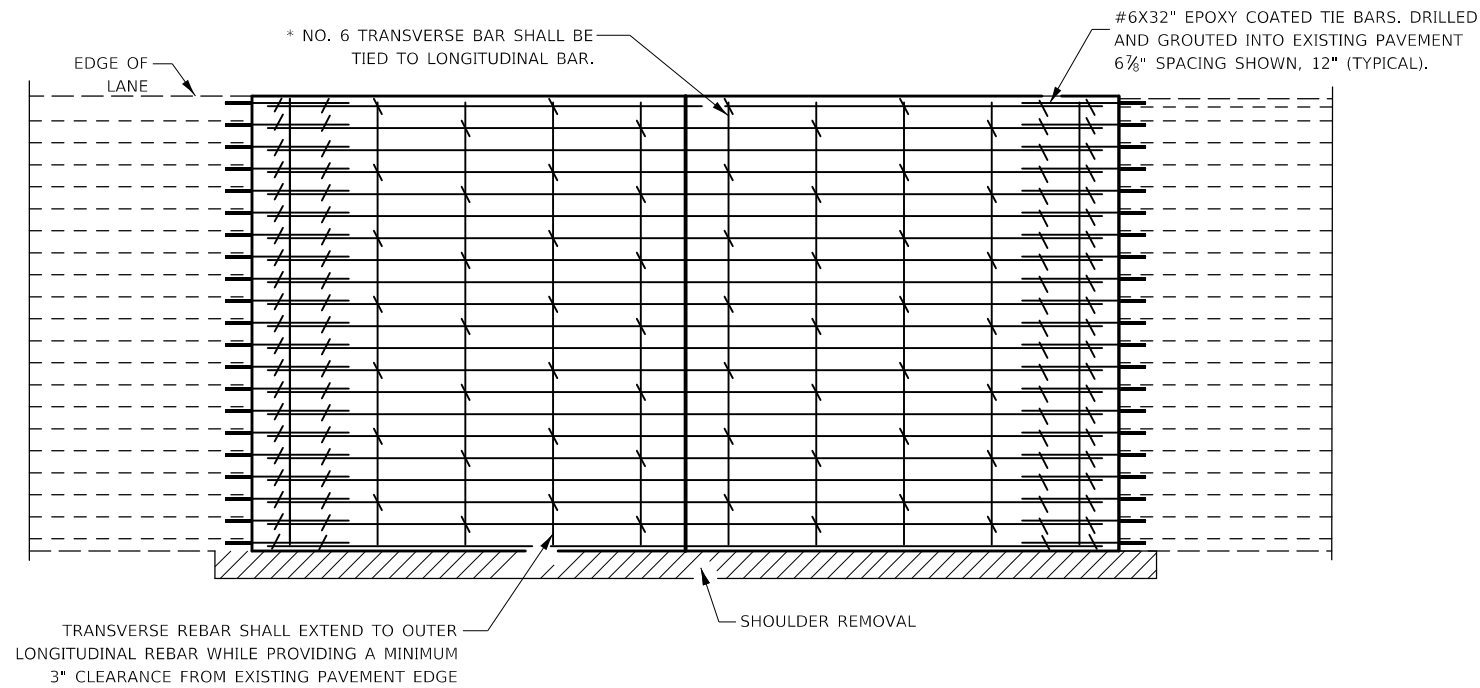
CLASS A PATCHING (SPECIAL)

SCALE: SHEET 1 OF 2 SHEETS STA. TO STA.

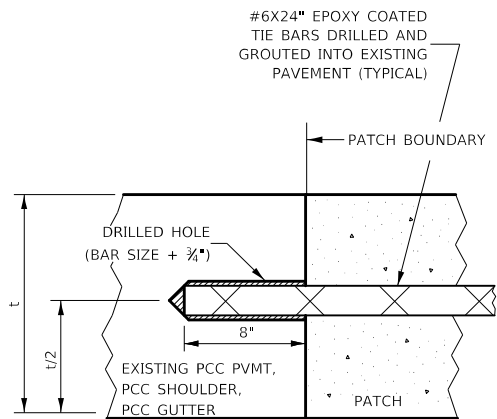
F.A.P. RTE.	SECTION	COUNTY	TOTAL SHEETS	SHEET NO.
322	D5 CM PATCH 2020-5		13	11
CONTRACT NO. 70E40				
ILLINOIS		FED. AID PROJECT		

DEWITT & MCLEAN

PAVEMENT REINFORCEMENT DETAIL

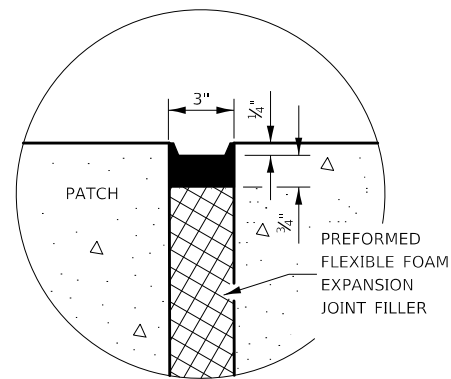


TRANSVERSE REBAR SHALL EXTEND TO OUTER LONGITUDINAL REBAR WHILE PROVIDING A MINIMUM 3" CLEARANCE FROM EXISTING PAVEMENT EDGE

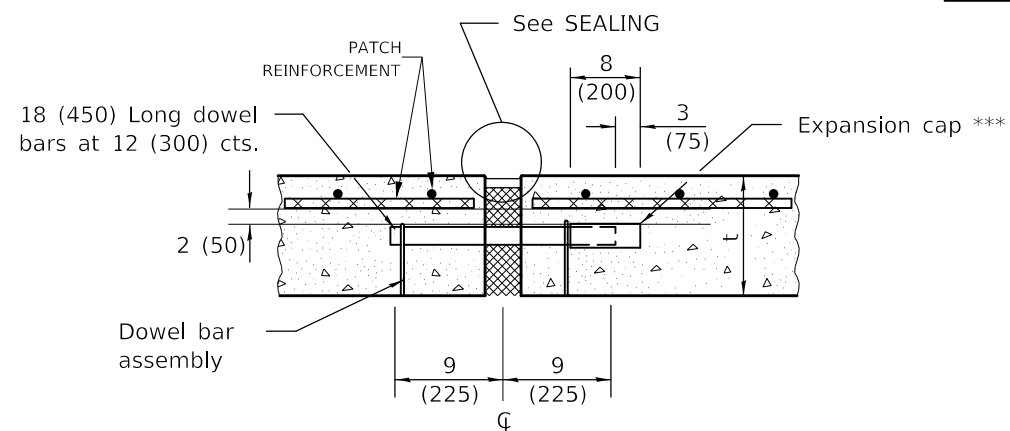


LONGITUDINAL CONSTRUCTION JOINT

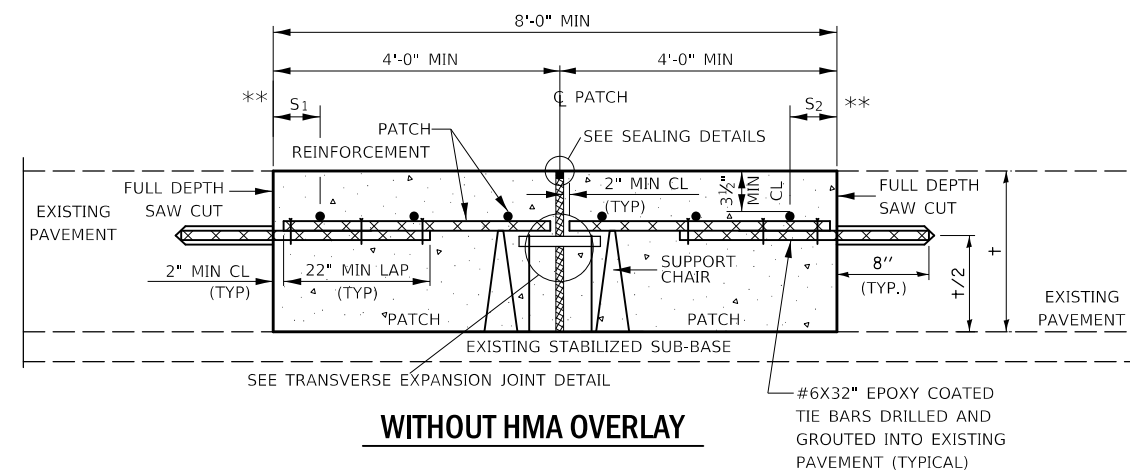
PATCHES MORE THAN 20' IN LENGTH SHALL BE TIED TO ADJACENT PAVEMENT, PCC SHOULDERS OR PCC CURB AND GUTTER WITH #6x24" EPOXY COATED TIE BARS AT 36" CENTERS.



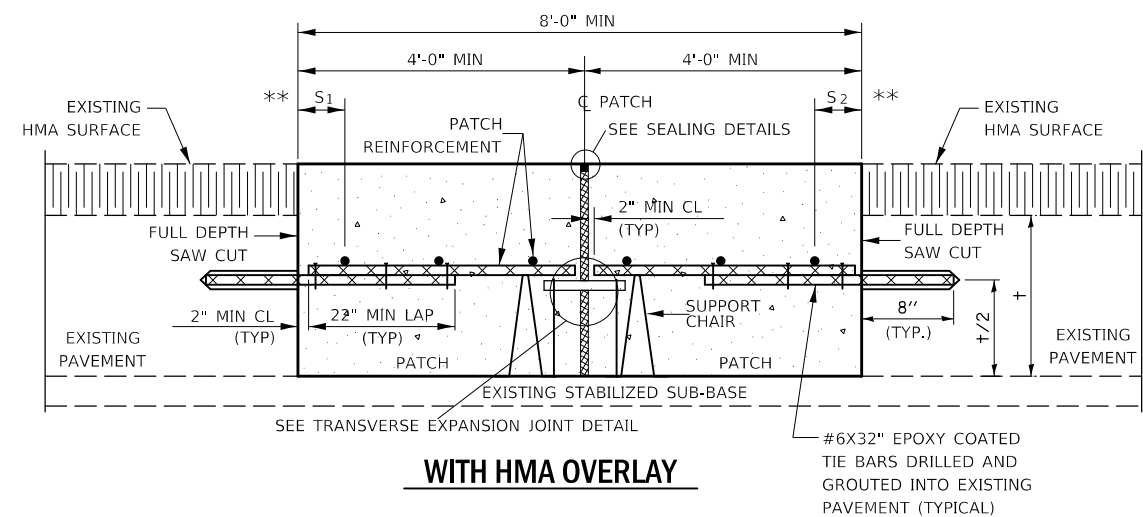
SEALING DETAIL (OPTION 1)



TRANSVERSE EXPANSION JOINT (FOR PAVEMENTS WITH EQUAL THICKNESS)

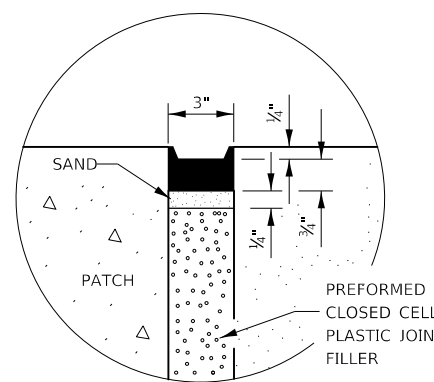


WITHOUT HMA OVERLAY



WITH HMA OVERLAY

CLASS A PATCH WITH EXPANSION JOINT



SEALING DETAIL (OPTION 2)

NOTES:

EXISTING TRANSVERSE REINFORCEMENT SPACING; $\pm 6\frac{7}{8}$ ".

SPACING OF NEW TRANSVERSE AND LONGITUDINAL REINFORCEMENT SHALL MATCH SPACING OF EXISTING REINFORCEMENT. SPACING OF NEW TRANSVERSE TIE BARS SHALL BE SPACED AT 12" CENTERS. TIE BARS AND REINFORCEMENT SHALL BE TIED TOGETHER WITH A MINIMUM OF TWO TIES PER BAR, WHEN ALIGNED.

SUPPORT CHAIRS SHALL BE REQUIRED WHENEVER PATCH LENGTH EXCEEDS 6'-0"

* EVERY THIRD INTERSECTION MUST BE TIED. WHEN THE MINIMUM CLEARANCE CANNOT BE OBTAINED WITH THE TRANSVERSE REBAR ON TOP, THEN THE TRANSVERSE REBAR SHALL BE TIED TO THE BOTTOM OF THE LONGITUDINAL REBAR.

** VARIABLES WHERE S_1 AND S_2 ARE 2 1/2" MIN. AND 12" MAX.

*** EXPANSION CAPS SHALL BE INSTALLED ON THE EXPANSION SIDE OF PAVEMENT

MODEL: I:\MODEL\MHFE... FILE: MHFE... PROJECT: 0570E-01\CADD\DATA\CAD\PROJECTS\0570E-01-CH-DETAILED.dgn

USER NAME = carterjp	DESIGNED -	REVISED -
PLOT SCALE = 100,0000' / in.	DRAWN -	REVISED -
PLOT DATE = 1/28/2020	CHECKED -	REVISED -
	DATE -	REVISED -

STATE OF ILLINOIS
DEPARTMENT OF TRANSPORTATION

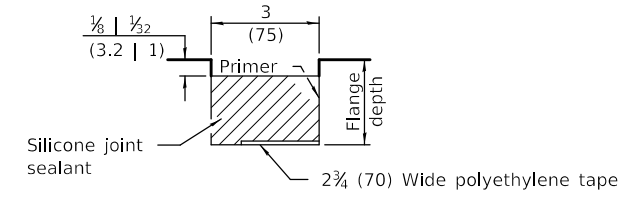
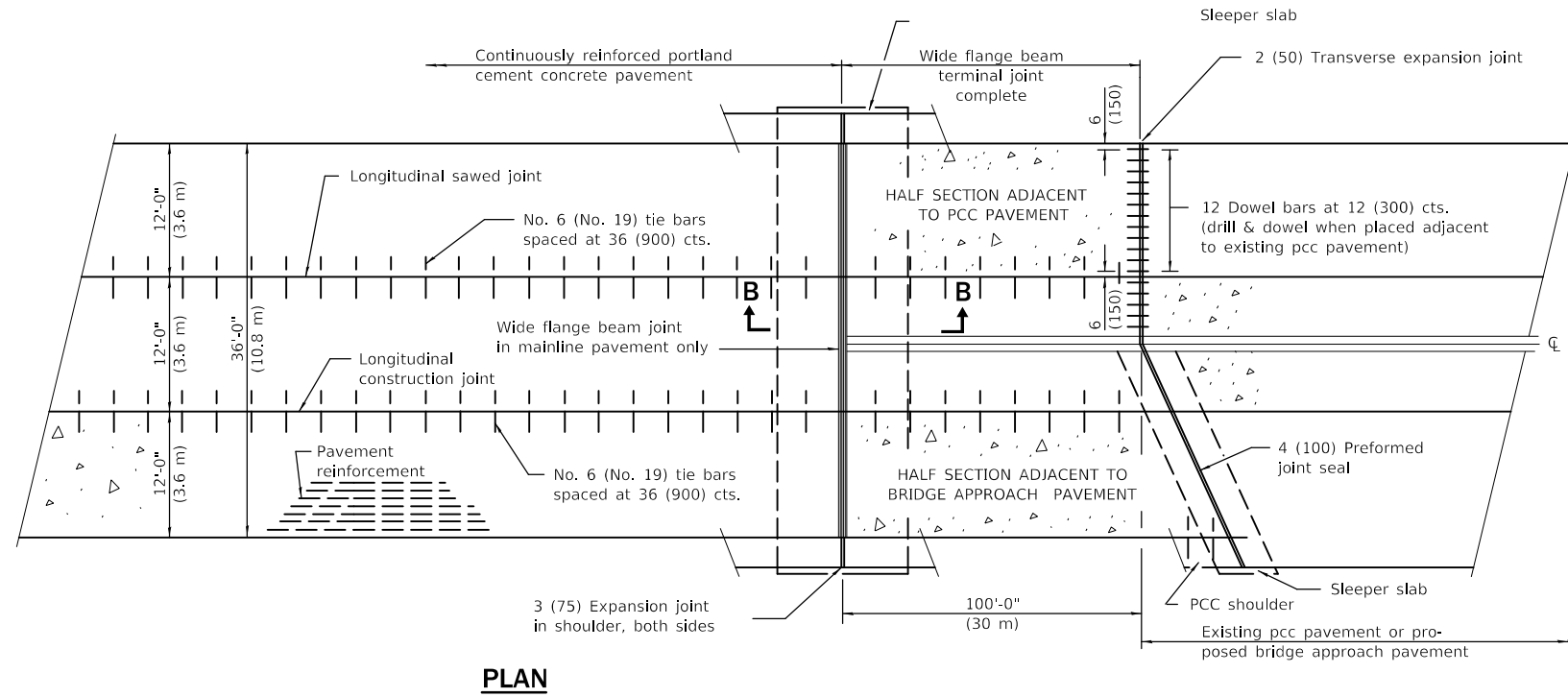
CLASS A PATCHING (SPECIAL)

SCALE: SHEET 2 OF 2 SHEETS STA. TO STA.

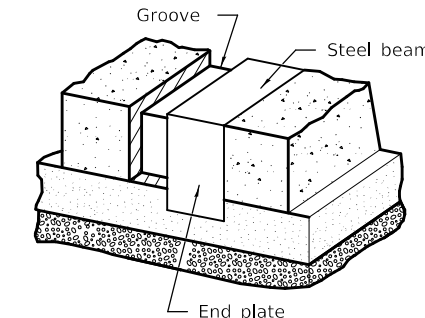
F.A.P. RTE.	SECTION	COUNTY	TOTAL SHEETS	SHEET NO.
322	D5 CM PATCH 2020-5		13	12
CONTRACT NO. 70E40				

ILLINOIS FED. AID PROJECT DEWITT & MCLEAN

EXISTING DETAIL FOR WIDE FLANGE BEAM TERMINAL JOINT



GROOVE DETAIL



**VIEW OF GROOVE AT
EDGE OF PAVEMENT**

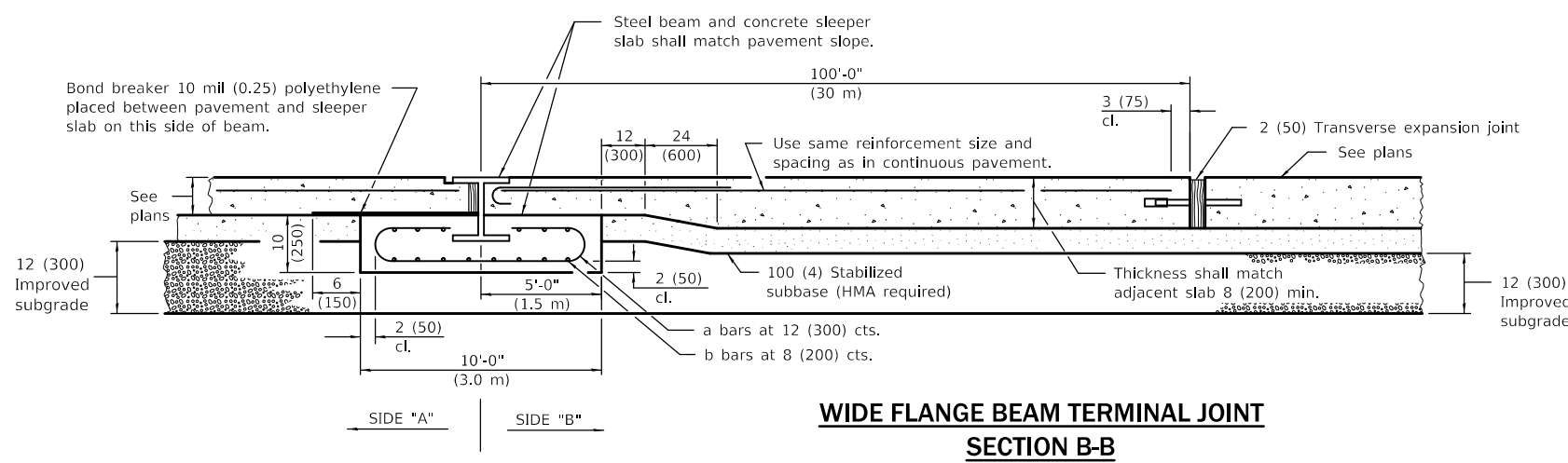
GENERAL NOTES

Sealant components for the wide flange beam terminal joint shall be as follows: The sealant shall be Dow Corning 888 Silicone Highway Joint Sealant. The tape shall be Polyethylene Tape No. 40. The primer, used on the metal only, shall be Dow Corning 1200. At the Contractor's option the joint may be sealed as shown in the optional groove detail.

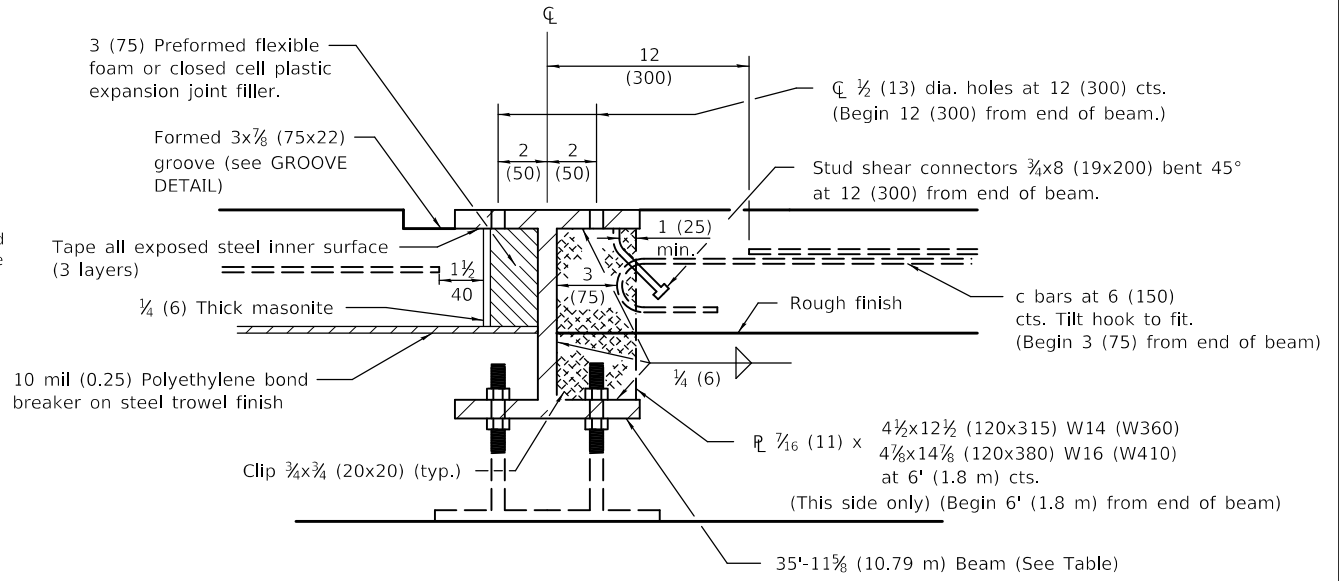
See Standard 421001 for details of pavement reinforcement.

See Standards 420001 and 420401 for joint details not shown.

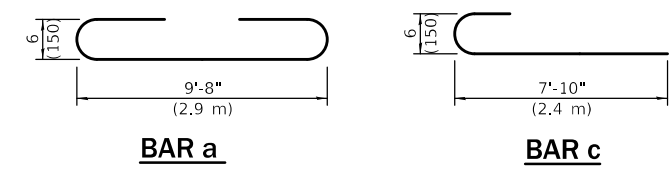
All dimensions shall be in inches (millimeters) unless otherwise shown.



**WIDE FLANGE BEAM TERMINAL JOINT
SECTION B-B**



DETAIL AT BEAM



BAR a

BAR c

MODEL: I:\MODEL\MHFS... FILE: MHFS... PROJECT: D570E-01\CADD\DATA\CAD\PROJECTS\0570E-01\ch-drawings.dwg

USER NAME = carterjp	DESIGNED -	REVISED -
PLOT SCALE = 40.0000 ' / in.	DRAWN -	REVISED -
PLOT DATE = 1/28/2020	CHECKED -	REVISED -
	DATE -	REVISED -

**STATE OF ILLINOIS
DEPARTMENT OF TRANSPORTATION**

DETAIL FOR EXISTING WIDE FLANGE BEAM TERMINAL JOINT			
SCALE:	SHEET 1 OF 1 SHEETS	STA.	TO STA.

F.A. RTE.	SECTION	COUNTY	TOTAL SHEETS	SHEET NO.
322	D5 CM PATCH 2020-5	*	13	13
CONTRACT NO. 70E40			ILLINOIS FED. AID PROJECT	