

STATE OF ILLINOIS
DEPARTMENT OF TRANSPORTATION

F.A.I. RTE.	SECTION	COUNTY	TOTAL SHEETS	SHEET NO.
270	60-(1,2,3,4,5)-1RS-6	MADISON	34	1
		ILLINOIS	CONTRACT NO. 76N66	

123

FOR INDEX OF SHEETS, SEE SHEET NO. 2

PROPOSED HIGHWAY PLANS

FAI ROUTE 270 (I-270)
SECTION 60-(1,2,3,4,5)-1RS-6
SMART OVERLAY AND
ULTRA-THIN BONDED WEARING COURSE
MADISON COUNTY

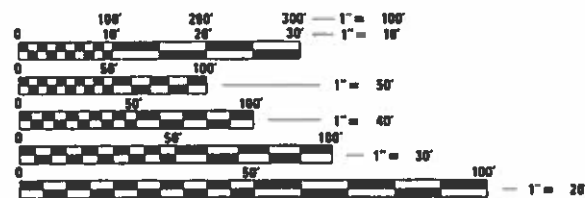
C-98-112-20



BEGIN PROJECT STA. 258+56
SMART RESURFACING
LAT: 38.76587
LONG: -90.11581

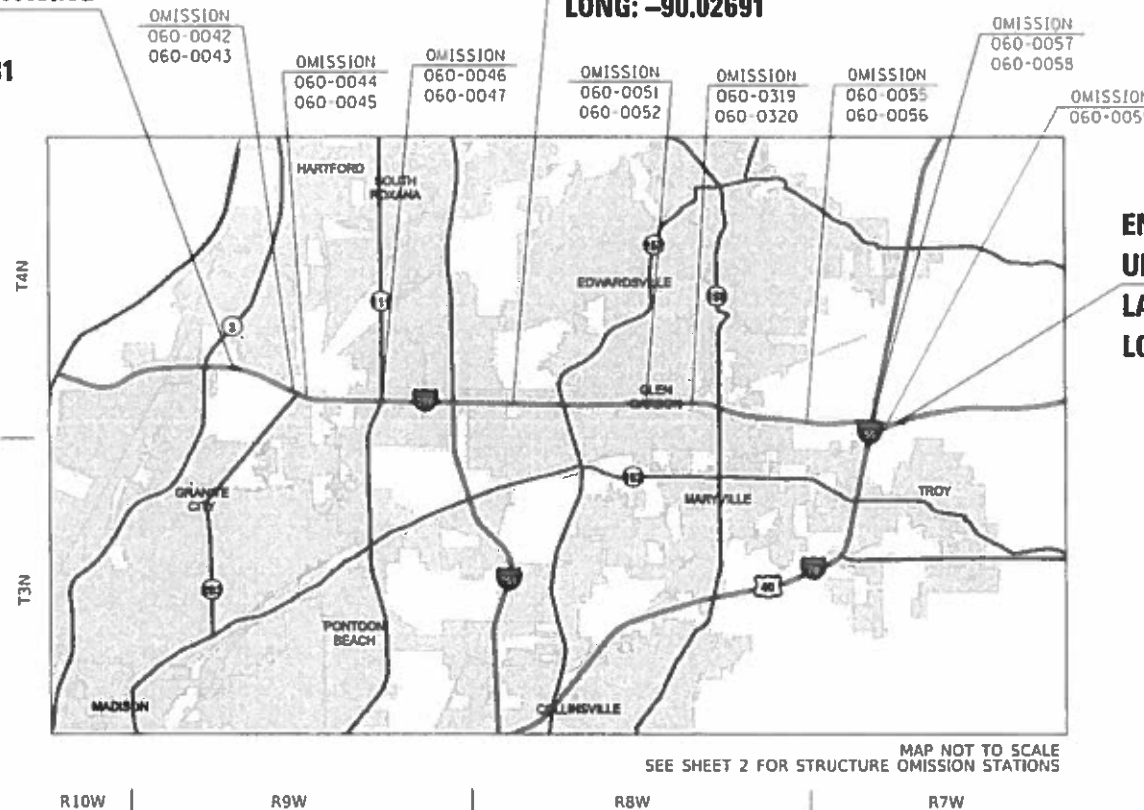
END SMART RESURFACING STA. 515+70
BEGIN ULTRA-THIN BONDED WEARING COURSE
LAT: 38.75677
LONG: -90.02691

END PROJECT
ULTRA-THIN BONDED WEARING COURSE
LAT: 38.75209
LONG: -89.89778



FULL SIZE PLANS HAVE BEEN PREPARED USING STANDARD ENGINEERING SCALES. REDUCED SIZED PLANS WILL NOT CONFORM TO STANDARD SCALES. IN MAKING MEASUREMENTS ON REDUCED PLANS, THE ABOVE SCALES MAY BE USED.

J.U.L.I.E.
JOINT UTILITY LOCATION INFORMATION FOR EXCAVATORS
1-800-892-0123
OR 811



SEE SHEET 2 FOR STRUCTURE OMISSION STATIONS
MAP NOT TO SCALE

PROJECT ENGINEER: HERVE GELIN (618) 346-3179
PROJECT MANAGER: BILLIE OWEN (618) 346-3209

CONTRACT NO. 76N66

GROSS LENGTH: 63418.6 FT. = 11.96 MILE
NET LENGTH = 57404.8 FT = 10.87 MILE

STATE OF ILLINOIS
DEPARTMENT OF TRANSPORTATION

SUBMITTED Feb 20 2020
Keith Roberts
REGIONAL ENGINEER

March 20 2020
Scott A. Etkin
ENGINEER OF DESIGN AND ENVIRONMENT

March 20 2020
Asmat Jan
DIRECTOR OF HIGHWAYS PROJECT IMPLEMENTATION

PRINTED BY THE AUTHORITY
OF THE STATE OF ILLINOIS

CODE NO.	ITEM	UNIT	TOTAL QUANTITY	CONSTR. CODE
				100% STATE ROADWAY
				0005 URBAN
40600250	RAPID SETTING POLYMER MODIFIED EMULSION	POUND	477629	477629
40600295	POLYMERIZED BITUMINOUS MATERIALS (TACK COAT)	POUND	66441	66441
40600990	TEMPORARY RAMP	SQ YD	925	925
40605034	POLYMERIZED HOT-MIX ASPHALT SURFACE COURSE, STONE MATRIX ASPHALT, 12.5, MIX "E", N80	TON	20180	20180
42000060	WELDED WIRE REINFORCEMENT	SQ YD	3115	3115
44000154	HOT-MIX ASPHALT SURFACE REMOVAL, 1 1/4"	SQ YD	233754	233754
44000155	HOT-MIX ASPHALT SURFACE REMOVAL, 1 1/2"	SQ YD	28413	28413
44000161	HOT-MIX ASPHALT SURFACE REMOVAL, 3"	SQ YD	148872	148872
44201053	CLASS B PATCHES, TYPE IV, 17 INCH	SQ YD	2612	2612
44201055	CLASS B PATCHES, TYPE II, 17 INCH	SQ YD	58	58
44201057	CLASS B PATCHES, TYPE III, 17 INCH	SQ YD	503	503
44201299	DOWEL BARS 1 1/2"	EACH	966	966
44213200	SAW CUTS	FOOT	6894	6894
44213204	TIE BARS 3/4"	EACH	843	843

MODEL: Default
 FILE: \\nrcs1\pub\lhamroom\data\illinois.gov\PIWDOT\Documents\DOT_Offices\Dir\ctc @Projects\0776N66\CADD\DATA\CAD\Sheet\0776N66-111-500.dgn

USER NAME = challandeske	DESIGNED -	REVISED -
	DRAWN -	REVISED -
PLOT SCALE = 100.0000' / in.	CHECKED -	REVISED -
PLOT DATE = 2/21/2020	DATE -	REVISED -

**STATE OF ILLINOIS
DEPARTMENT OF TRANSPORTATION**

SUMMARY OF QUANTITIES

SCALE: SHEET OF SHEETS STA. TO STA.

F.A.I. RTE.	SECTION	COUNTY	TOTAL SHEETS	SHEET NO.
270	60-(1,2,3,4,5)-1R5-6	MADISON	34	3
CONTRACT NO. 76N66				
		ILLINOIS	FED. AID PROJECT	

CODE NO.	ITEM	UNIT	TOTAL QUANTITY	CONSTR. CODE	
				100% STATE ROADWAY	
				0005	URBAN
67000400	ENGINEER'S FIELD OFFICE, TYPE A	CAL MO	9	9	
67100100	MOBILIZATION	L SUM	1	1	
70100420	TRAFFIC CONTROL AND PROTECTION, STANDARD 701411	EACH	30	30	
70100800	TRAFFIC CONTROL AND PROTECTION, STANDARD 701401	L SUM	1	1	
70100815	TRAFFIC CONTROL AND PROTECTION, STANDARD 701446	L SUM	1	1	
70100820	TRAFFIC CONTROL AND PROTECTION, STANDARD 701451	L SUM	1	1	
70100825	TRAFFIC CONTROL AND PROTECTION, STANDARD 701456	L SUM	1	1	
70107025	CHANGEABLE MESSAGE SIGN	CAL DA	2145	2145	
70200100	NIGHTTIME WORK ZONE LIGHTING	L SUM	1	1	
70300100	SHORT TERM PAVEMENT MARKING	FOOT	37912	37912	
70300150	SHORT TERM PAVEMENT MARKING REMOVAL	SQ FT	12637	12637	
70300220	TEMPORARY PAVEMENT MARKING - LINE 4"	FOOT	269148	269148	
70300240	TEMPORARY PAVEMENT MARKING - LINE 6"	FOOT	39616	39616	
70300250	TEMPORARY PAVEMENT MARKING - LINE 8"	FOOT	19719	19719	

MODEL: Default
 FILE: \\nrcs-pix\pub\room\dat\illinois.gov\PI\DOT\Documents\DOT_Offices\Dir\ctc @projects\0776166\CADD\DATA\CAD\chres\0776166-sh-500.dgn

USER NAME = challandeske	DESIGNED -	REVISED -
	DRAWN -	REVISED -
PLOT SCALE = 100.0000' / in.	CHECKED -	REVISED -
PLOT DATE = 2/21/2020	DATE -	REVISED -

**STATE OF ILLINOIS
DEPARTMENT OF TRANSPORTATION**

SUMMARY OF QUANTITIES

SCALE: SHEET OF SHEETS STA. TO STA.

F.A.I. RTE.	SECTION	COUNTY	TOTAL SHEETS	SHEET NO.
270	60-(1,2,3,4,5)-1RS-6	MADISON	34	4
CONTRACT NO. 76N66				
		ILLINOIS	FED. AID PROJECT	

MODEL: Default
 FILE: \\nrcs-pix\pub\harcam.dwg
 ILLINOIS.GOV\PIV\DOT\Documents\DOT_Offices\Dir\ctc @Projects\076N66\CADD\DATA\CAD\Sheet\076N66-111-500.dgn

CODE NO.	ITEM	UNIT	TOTAL QUANTITY	CONSTR. CODE	
				100% STATE ROADWAY	0005 URBAN
70300260	TEMPORARY PAVEMENT MARKING - LINE 12"	FOOT	800	800	
* 78004354	PREFORMED PLASTIC PAVEMENT MARKING, TYPE D - INLAID - LINE 4"	FOOT	269148	269148	
* 78004356	PREFORMED PLASTIC PAVEMENT MARKING, TYPE D - INLAID - LINE 6"	FOOT	39616	39616	
* 78004358	PREFORMED PLASTIC PAVEMENT MARKING, TYPE D - INLAID - LINE 8"	FOOT	19719	19719	
* 78004362	PREFORMED PLASTIC PAVEMENT MARKING, TYPE D - INLAID - LINE 12"	FOOT	800	800	
78300200	RAISED REFLECTIVE PAVEMENT MARKER REMOVAL	EACH	4408	4408	
X0327640	REAL-TIME TRAFFIC CONTROL CENTRAL BASE UNIT	CAL MO	8	8	
X0328005	REAL-TIME TRAFFIC MONITORING SENSOR UNIT	CAL MO	16	16	
X0328006	REAL-TIME TRAFFIC CONTROL WARNING SIGN	CAL MO	32	32	
X4406030	PARTIAL DEPTH REMOVAL, TYPE I, 3"	SQ YD	371	371	
X4406230	PARTIAL DEPTH REMOVAL, TYPE II, 3"	SQ YD	599	599	
X4406430	PARTIAL DEPTH REMOVAL, TYPE III, 3"	SQ YD	532	532	
X4406630	PARTIAL DEPTH REMOVAL, TYPE IV, 3"	SQ YD	1005	1005	
X4421000	PARTIAL DEPTH PATCHING	TON	422	422	

*** SPECIALTY ITEM**

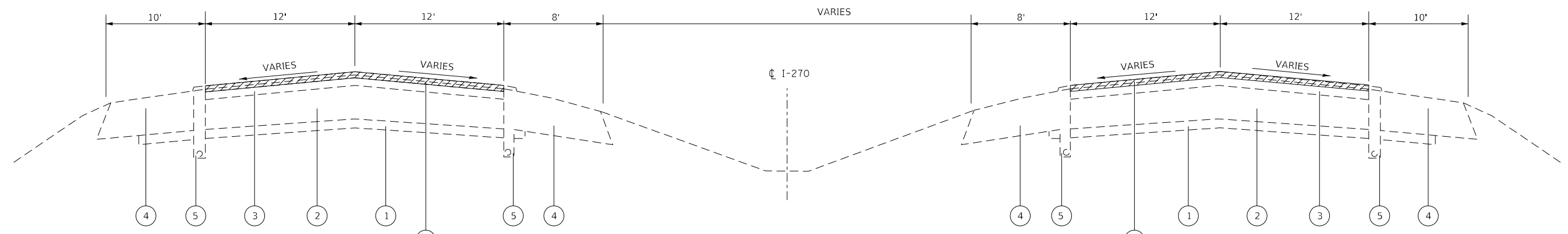
USER NAME = challandeske	DESIGNED -	REVISED -
	DRAWN -	REVISED -
PLOT SCALE = 100.0000' / in.	CHECKED -	REVISED -
PLOT DATE = 2/21/2020	DATE -	REVISED -

**STATE OF ILLINOIS
DEPARTMENT OF TRANSPORTATION**

SUMMARY OF QUANTITIES

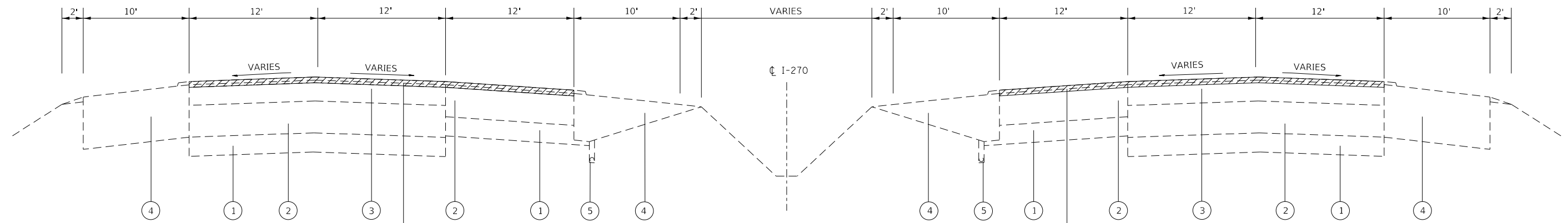
SCALE: SHEET OF SHEETS STA. TO STA.

F.A.I. RTE.	SECTION	COUNTY	TOTAL SHEETS	SHEET NO.
270	60-(1,2,3,4,5)-1R5-6	MADISON	34	5
CONTRACT NO. 76N66				
		ILLINOIS	FED. AID PROJECT	



WESTBOUND
 STA. 258+54 TO STA. 317+80
 STA. 324+65 TO STA. 333+87
 STA. 337+63 TO STA. 399+97
 STA. 590+00 TO STA. 644+09
 STA. 648+60 TO STA. 686+16
 STA. 690+00 TO STA. 793+70
 STA. 795+82 TO STA. 839+47
 STA. 848+05 TO STA. 852+43
 STA. 861+00 TO STA. 885+66

EASTBOUND
 STA. 258+56 TO STA. 317+66
 STA. 324+52 TO STA. 334+05
 STA. 337+78 TO STA. 399+76
 STA. 607+50 TO STA. 644+37
 STA. 648+81 TO STA. 685+89
 STA. 689+72 TO STA. 794+05
 STA. 798+40 TO STA. 857+42
 STA. 860+67 TO STA. 871+97
 STA. 875+58 TO STA. 880+04



WESTBOUND
 STA. 412+30 TO STA. 415+60
 STA. 438+89 TO STA. 522+89
 STA. 559+16 TO STA. 587+00
 STA. 856+00 TO STA. 858+75

EASTBOUND
 STA. 433+16 TO STA. 492+66
 STA. 510+96 TO STA. 533+84
 STA. 553+95 TO STA. 607+50

LEGEND

- ① EXISTING SUB-BASE GRANULAR MATERIAL
 - ② EXISTING PCC PAVEMENT, 10"
 - ③ EXISTING HOT-MIX ASPHALT OVERLAY
 - ④ EXISTING HOT-MIX ASPHALT SHOULDER
 - ⑤ EXISTING UNDERDRAIN
 - ⑥ EXISTING AGGREGATE SHOULDER
 - Ⓐ PROPOSED HMA SURFACE REMOVAL, 3"
 - Ⓑ PROPOSED HMA SURFACE REMOVAL, 1 3/4"
 - Ⓒ PROPOSED HMA SURFACE REMOVAL, 1 1/2"
- SEE SCHEDULES FOR LOCATIONS

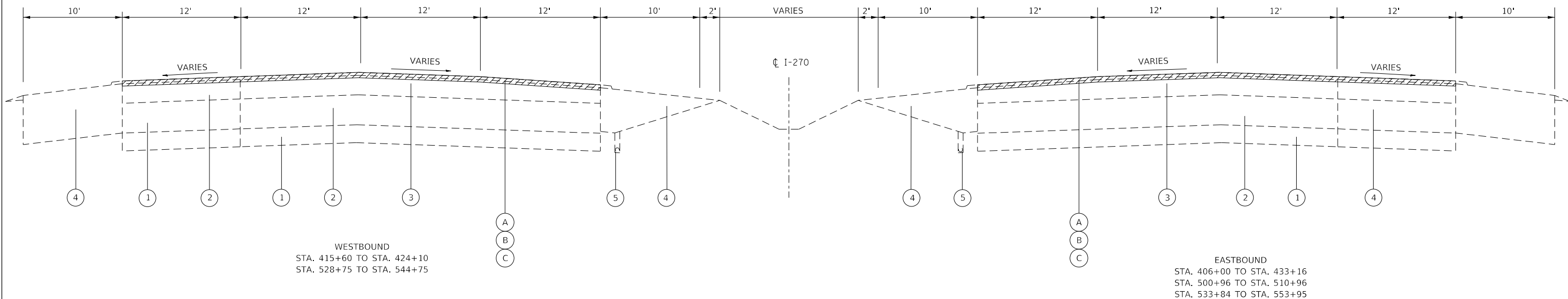
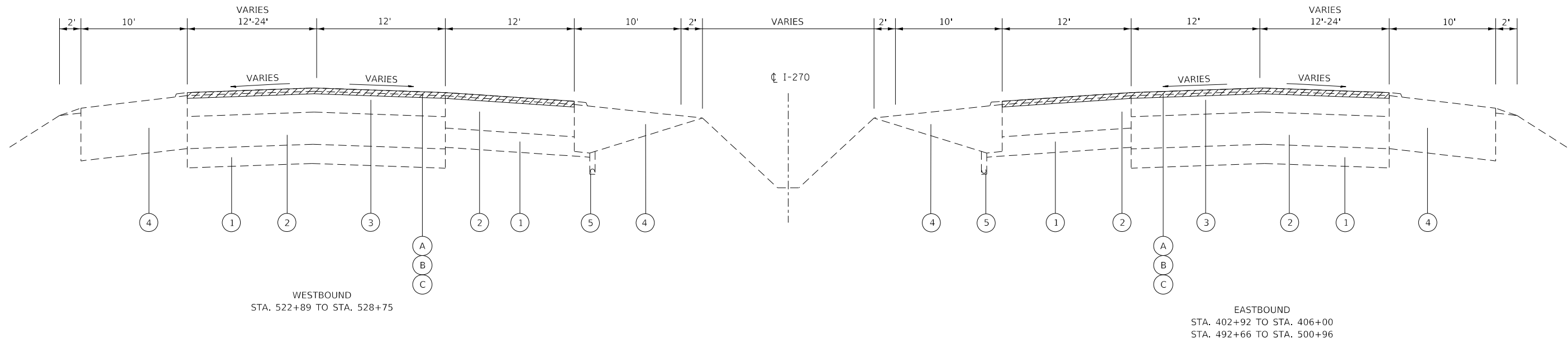
FILE NAME =	USER NAME = chollandeske	DESIGNED -	REVISED -
pw:\planroom.dot.illinois.gov\PIDOT\Documents\IDOT Offices\District 8\Projects\0876N66\BRAND\CAD\Sheets\0876N66-sht-typical.dgn		CHECKED -	REVISED -
Default	PLOT DATE = 2/20/2020	DATE -	REVISED -

**STATE OF ILLINOIS
 DEPARTMENT OF TRANSPORTATION**

**EXISTING TYPICAL SECTIONS
 MAINLINE I-270**

SCALE: N/A	SHEET	OF	SHEETS	STA.	TO	STA.
------------	-------	----	--------	------	----	------

F.A.I. RTE.	SECTION	COUNTY	TOTAL SHEETS	SHEET NO.
270	60-(1,2,3,4,5)-IRS-6	MADISON	34	7
CONTRACT NO. 76N66				
ILLINOIS FED. AID PROJECT				



LEGEND

- ① EXISTING SUB-BASE GRANULAR MATERIAL
 - ② EXISTING PCC PAVEMENT, 10"
 - ③ EXISTING HOT-MIX ASPHALT OVERLAY
 - ④ EXISTING HOT-MIX ASPHALT SHOULDER
 - ⑤ EXISTING UNDERDRAIN
 - ⑥ EXISTING AGGREGATE SHOULDER
 - Ⓐ PROPOSED HMA SURFACE REMOVAL, 3"
 - Ⓑ PROPOSED HMA SURFACE REMOVAL, 1 3/4"
 - Ⓒ PROPOSED HMA SURFACE REMOVAL, 1 1/2"
- SEE SCHEDULES FOR LOCATIONS

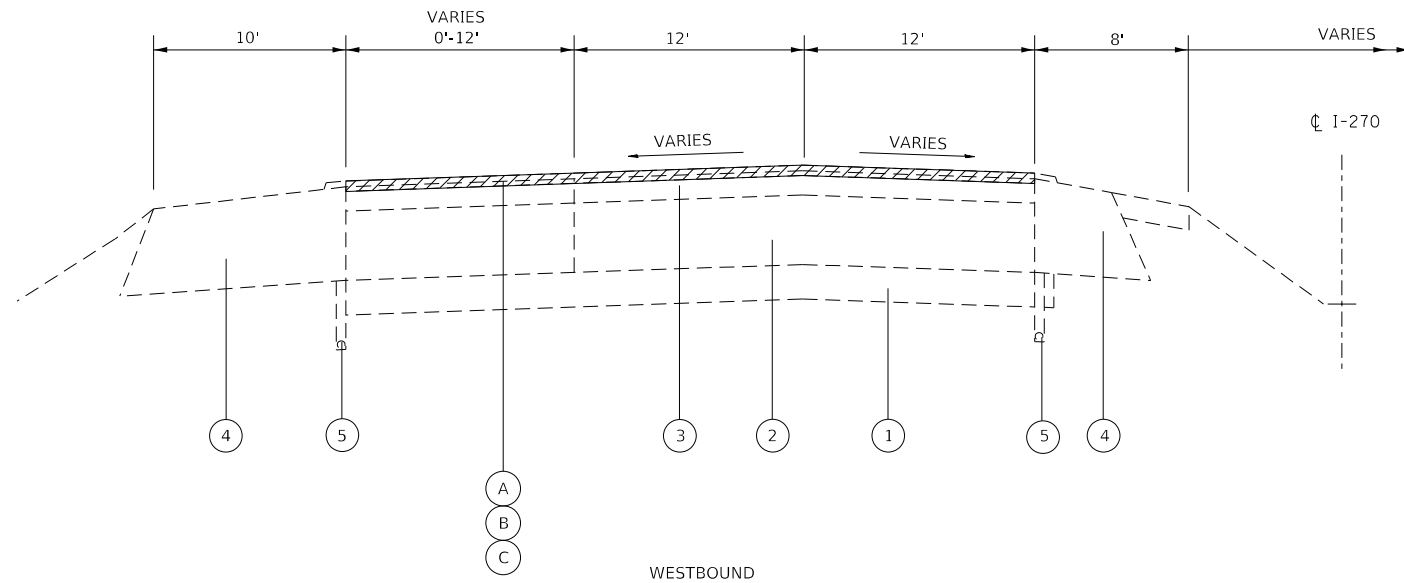
FILE NAME =	USER NAME = chollandeske	DESIGNED -	REVISED -
pw:\planroom.dot.illinois.gov\PIDOT\Documents\IDOT Offices\District 8\Projects\D876N66\BRAND\CAD\Sheets\D876N66-sht-typical.dgn		CHECKED -	REVISED -
Default	PLOT DATE = 2/20/2020	DATE -	REVISED -

**STATE OF ILLINOIS
DEPARTMENT OF TRANSPORTATION**

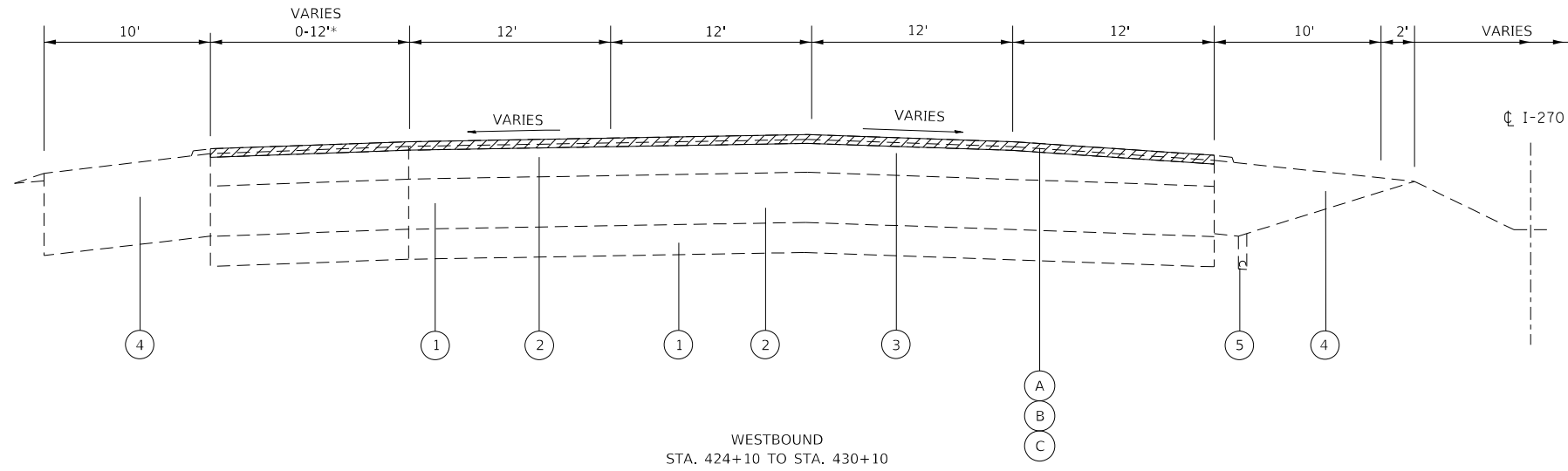
**EXISTING TYPICAL SECTIONS
MAINLINE I-270**

SCALE: N/A	SHEET	OF	SHEETS	STA.	TO	STA.
------------	-------	----	--------	------	----	------

F.A.I. RTE.	SECTION	COUNTY	TOTAL SHEETS	SHEET NO.
270	60-(1,2,3,4,5)-IRS-6	MADISON	34	8
CONTRACT NO. 76N66				
ILLINOIS FED. AID PROJECT				



WESTBOUND
 STA. 403+11 TO STA. 412+30
 STA. 587+00 TO STA. 590+00
 STA. 839+47 TO STA. 848+05
 STA. 852+43 TO STA. 856+00



WESTBOUND
 STA. 424+10 TO STA. 430+10
 STA. 544+75 TO STA. 559+16
 *STA. 430+10 TO STA. 438+89 - 5-12' LANES

LEGEND

- ① EXISTING SUB-BASE GRANULAR MATERIAL
 - ② EXISTING PCC PAVEMENT, 10"
 - ③ EXISTING HOT-MIX ASPHALT OVERLAY
 - ④ EXISTING HOT-MIX ASPHALT SHOULDER
 - ⑤ EXISTING UNDERDRAIN
 - ⑥ EXISTING AGGREGATE SHOULDER
 - Ⓐ PROPOSED HMA SURFACE REMOVAL, 3"
 - Ⓑ PROPOSED HMA SURFACE REMOVAL, 1 3/4"
 - Ⓒ PROPOSED HMA SURFACE REMOVAL, 1 1/2"
- SEE SCHEDULES FOR LOCATIONS

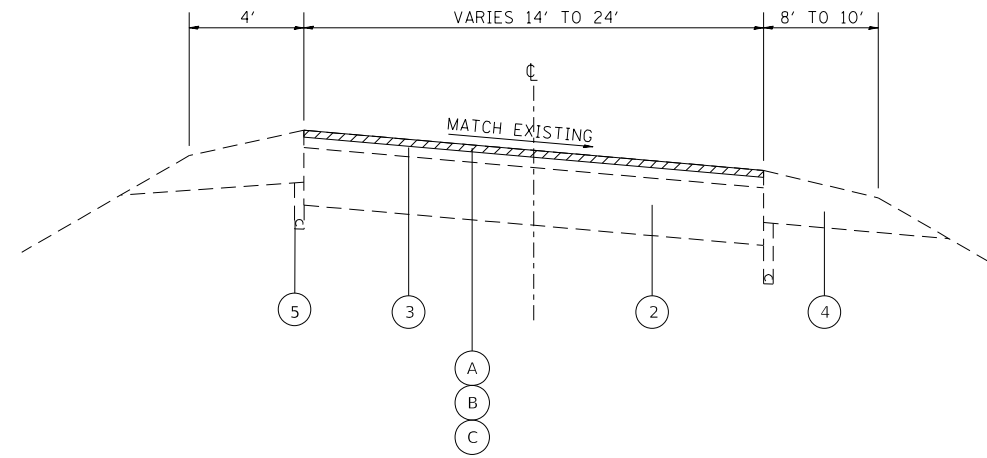
FILE NAME =	USER NAME = chollandeske	DESIGNED -	REVISED -
pw:\planroom.dot.illinois.gov\PIDOT\Documents\IDOT Offices\District 8\Projects\0876N66\BRAND\CAD\Sheets\0876N66-sht-typical.dgn		CHECKED -	REVISED -
Default	PLOT DATE = 2/20/2020	DATE -	REVISED -

**STATE OF ILLINOIS
 DEPARTMENT OF TRANSPORTATION**

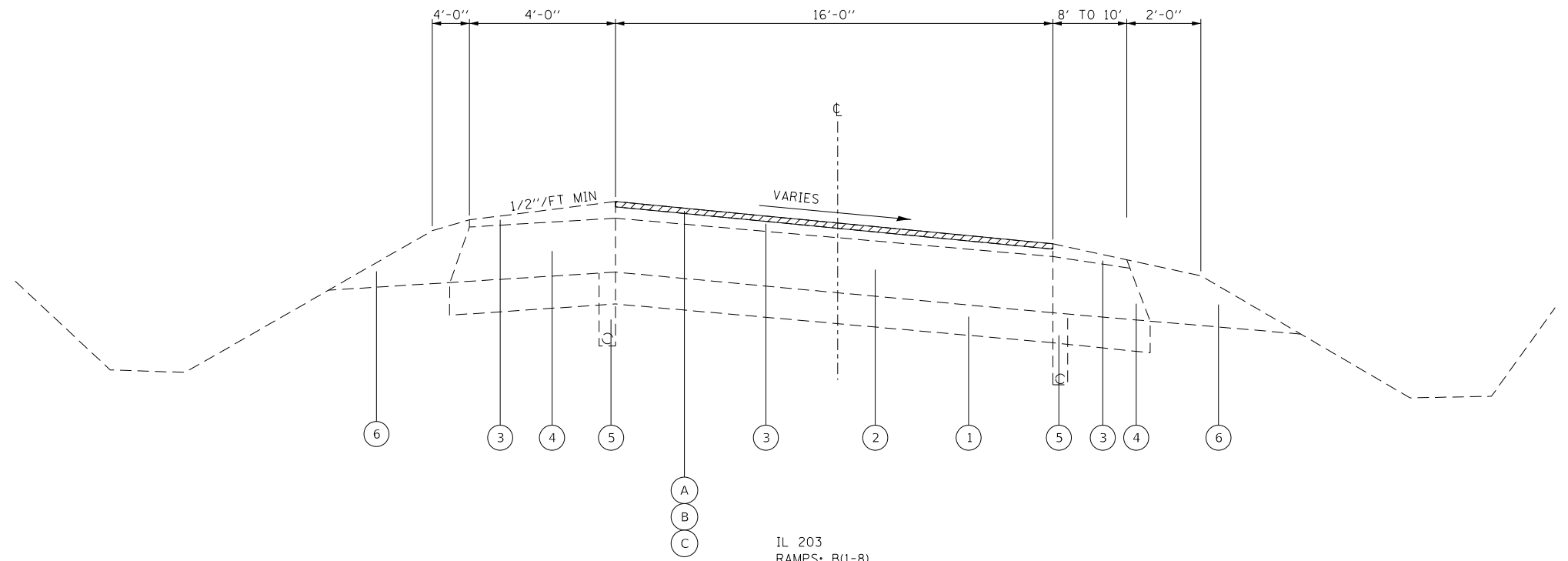
**EXISTING TYPICAL SECTIONS
 MAINLINE I-270**

SCALE: N/A SHEET OF SHEETS STA. TO STA.

F.A.I. RTE.	SECTION	COUNTY	TOTAL SHEETS	SHEET NO.
270	60-(1,2,3,4,5)-IRS-6	MADISON	34	9
			CONTRACT NO. 76N66	
ILLINOIS FED. AID PROJECT				



I-270 WB ON RAMP AT IL 157 RAMP 1 - STA. 146+97 TO STA. 153+93
 I-270 EB OFF RAMP AT IL 157 RAMP 2 - STA. 257+22 TO STA. 274+33 - NO PROPOSED WORK
 I-270 WB OFF RAMP AT IL 157 RAMP 3 - STA. 6+21 TO STA. 13+95
 I-270 EB ON RAMP AT IL 157 RAMP 4 - STA. 1+33 TO STA. 10+20
 I-270 WB ON RAMP AT IL 159 RAMP 1 - STA. 2+37 TO STA. 10+18
 I-270 EB OFF RAMP AT IL 159 RAMP 2 - STA. 5+56 TO STA. 14+18
 I-270 WB OFF RAMP AT IL 159 RAMP 3 - STA. 14+61 TO STA. 17+26
 I-270 EB ON RAMP AT IL 159 RAMP 4 - STA. 2+37 TO STA. 9+73



LEGEND

- ① EXISTING SUB-BASE GRANULAR MATERIAL
 - ② EXISTING PCC PAVEMENT, 10"
 - ③ EXISTING HOT-MIX ASPHALT OVERLAY
 - ④ EXISTING HOT-MIX ASPHALT SHOULDER
 - ⑤ EXISTING UNDERDRAIN
 - ⑥ EXISTING AGGREGATE SHOULDER
 - Ⓐ PROPOSED HMA SURFACE REMOVAL, 3"
 - Ⓑ PROPOSED HMA SURFACE REMOVAL, 1 3/4"
 - Ⓒ PROPOSED HMA SURFACE REMOVAL, 1 1/2"
- SEE SCHEDULES FOR LOCATIONS

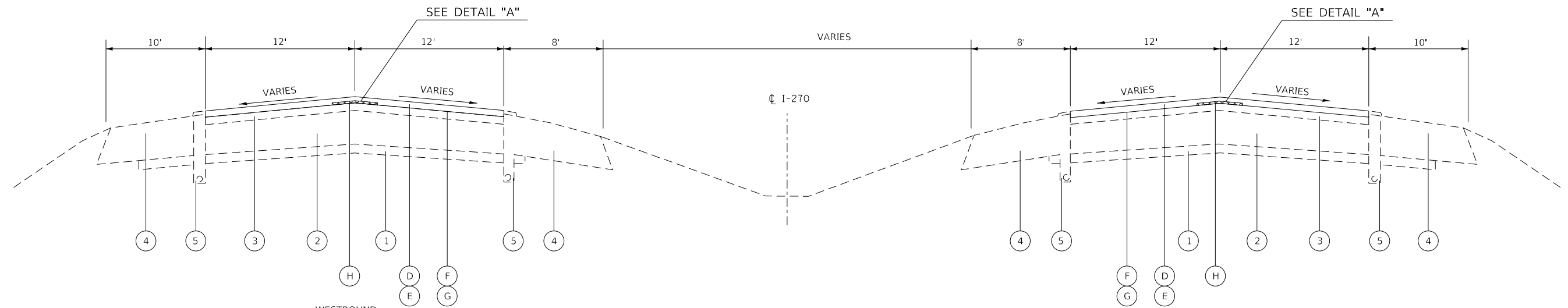
FILE NAME =	USER NAME = chollandeske	DESIGNED -	REVISED -
pw:\planroom.dot.illinois.gov\PIDOT\Documents\IDOT Offices\District 8\Projects\0876N66\RAMPS\CADsheets\0876N66-shr-typical.dgn		CHECKED -	REVISED -
Default	PLOT DATE = 2/20/2020	DATE -	REVISED -

**STATE OF ILLINOIS
DEPARTMENT OF TRANSPORTATION**

**EXISTING TYPICAL SECTIONS
RAMPS**

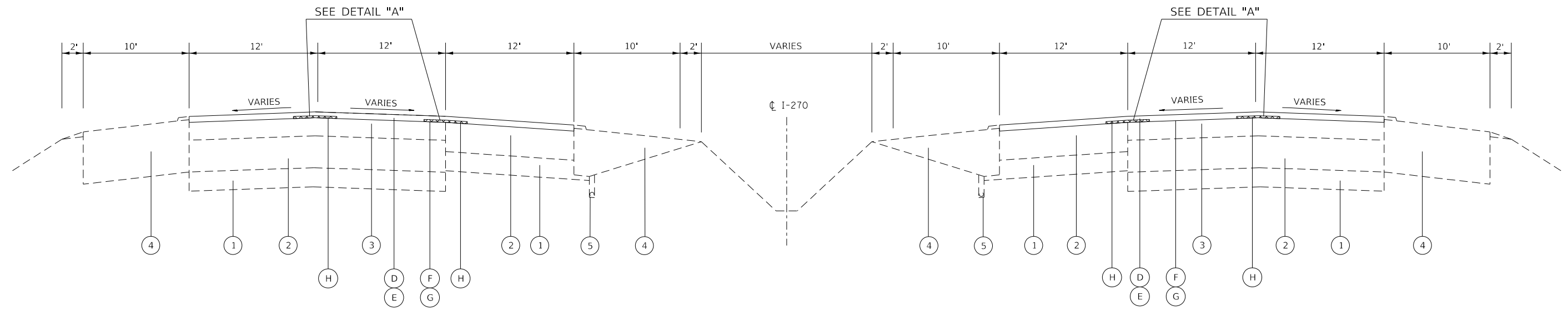
SCALE: N/A SHEET OF SHEETS STA. TO STA.

F.A.I. RTE.	SECTION	COUNTY	TOTAL SHEETS	SHEET NO.
270	60-(1,2,3,4,5)-IRS-6	MADISON	34	10
CONTRACT NO. 76N66			ILLINOIS FED. AID PROJECT	



WESTBOUND
 STA. 258+54 TO STA. 317+80
 STA. 324+65 TO STA. 333+87
 STA. 337+63 TO STA. 399+97
 STA. 590+00 TO STA. 644+09
 STA. 648+60 TO STA. 686+16
 STA. 690+00 TO STA. 793+70
 STA. 795+82 TO STA. 839+47
 STA. 848+05 TO STA. 852+43
 STA. 861+00 TO STA. 885+66

EASTBOUND
 STA. 258+56 TO STA. 317+66
 STA. 324+52 TO STA. 334+05
 STA. 337+78 TO STA. 399+76
 STA. 607+50 TO STA. 644+37
 STA. 648+81 TO STA. 685+89
 STA. 689+72 TO STA. 794+05
 STA. 798+40 TO STA. 857+42
 STA. 860+67 TO STA. 871+97
 STA. 875+58 TO STA. 880+04

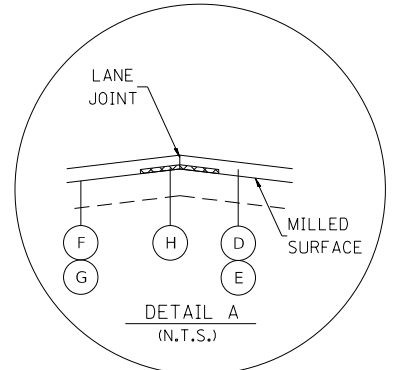


WESTBOUND
 STA. 412+30 TO STA. 415+60
 STA. 438+89 TO STA. 522+89
 STA. 559+16 TO STA. 587+00
 STA. 856+00 TO STA. 858+75

EASTBOUND
 STA. 433+16 TO STA. 492+66
 STA. 510+96 TO STA. 533+84
 STA. 553+95 TO STA. 607+50

LEGEND

- ① EXISTING SUB-BASE GRANULAR MATERIAL
 - ② EXISTING PCC PAVEMENT, 10"
 - ③ EXISTING HOT-MIX ASPHALT OVERLAY
 - ④ EXISTING HOT-MIX ASPHALT SHOULDER
 - ⑤ EXISTING UNDERDRAIN
 - ⑥ EXISTING AGGREGATE SHOULDER
 - Ⓐ PROPOSED HMA SURFACE REMOVAL, 3"
 - Ⓑ PROPOSED HMA SURFACE REMOVAL, 1 1/4"
 - Ⓒ PROPOSED HMA SURFACE REMOVAL, 1 1/2"
 - Ⓓ PROPOSED POLYMERIZED HOT-MIX ASPHALT SURFACE COURSE, STONE MATRIX ASPHALT, 12.5 MIX "E", N80, 2 1/2"
 - Ⓔ PROPOSED ULTRA-THIN BONDED WEARING COURSE, IL 12.5 UTB, MIX "E"
 - Ⓕ PROPOSED POLYMERIZED BITUMINOUS MATERIALS (TACK COAT)
 - Ⓖ PROPOSED RAPID SETTING POLYMER MODIFIED EMULSION (TACK COAT)
 - Ⓗ PROPOSED LONGITUDINAL JOINT SEALANT
- SEE SCHEDULES FOR LOCATIONS



**DETAIL "A" SHALL BE APPLIED ALONG THE CENTERLINE OF PAVEMENT

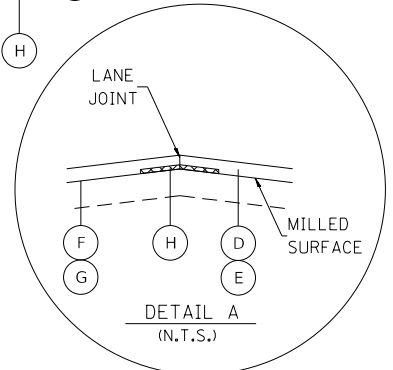
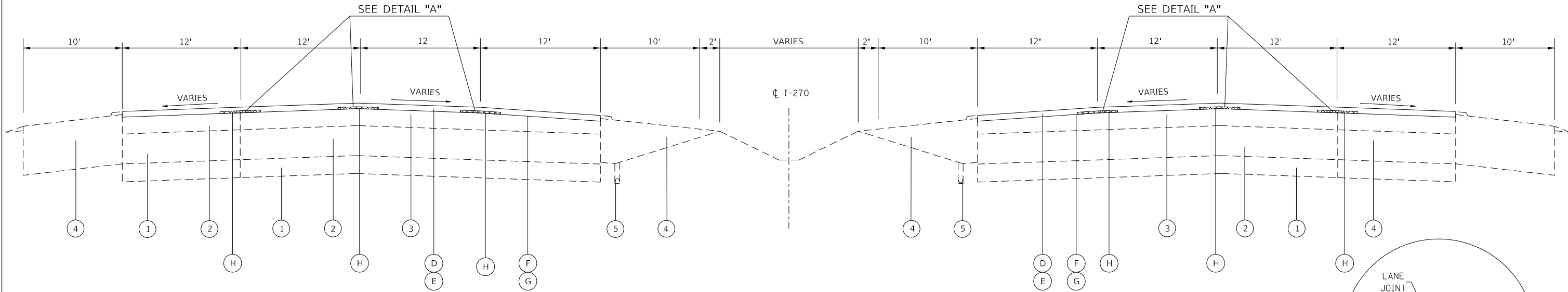
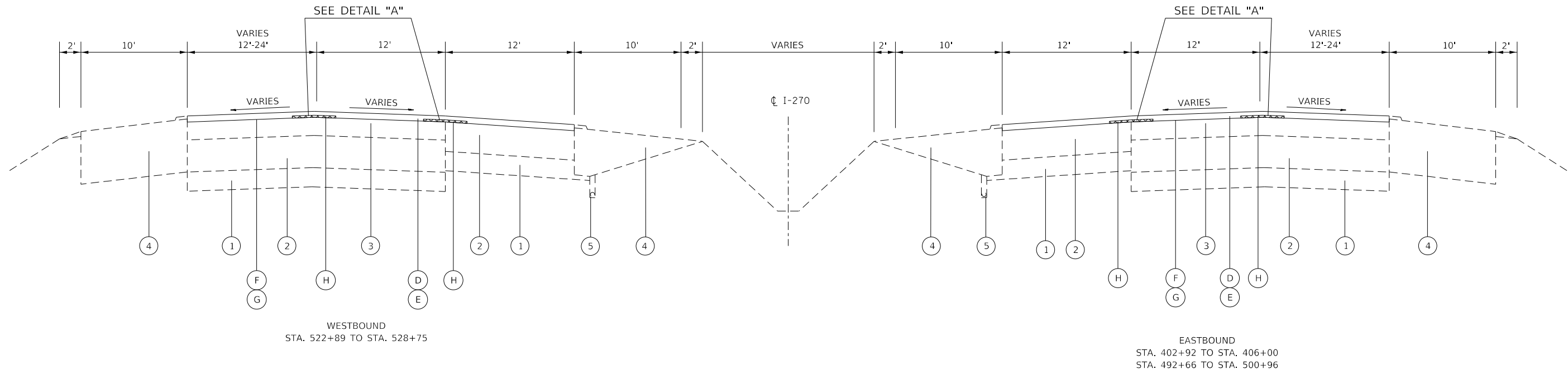
FILE NAME =	USER NAME = chollandeske	DESIGNED -	REVISED -
pw:\planroom.dot.illinois.gov\PIWIDOT\Documents\IDOT Offices\District 8\Projects\0876N66\BRAND\CAD\Sheets\0876N66-sh-typical.dgn		CHECKED -	REVISED -
Default	PLOT DATE = 2/20/2020	DATE -	REVISED -

STATE OF ILLINOIS
 DEPARTMENT OF TRANSPORTATION

PROPOSED TYPICAL SECTIONS
 MAINLINE I-270

SCALE: N/A SHEET OF SHEETS STA. TO STA.

F.A.I. RTE.	SECTION	COUNTY	TOTAL SHEETS	SHEET NO.
270	60-(1,2,3,4,5)-IRS-6	MADISON	34	11
CONTRACT NO. 76N66				
ILLINOIS FED. AID PROJECT				



••DETAIL "A" SHALL BE APPLIED ALONG THE CENTERLINE OF PAVEMENT

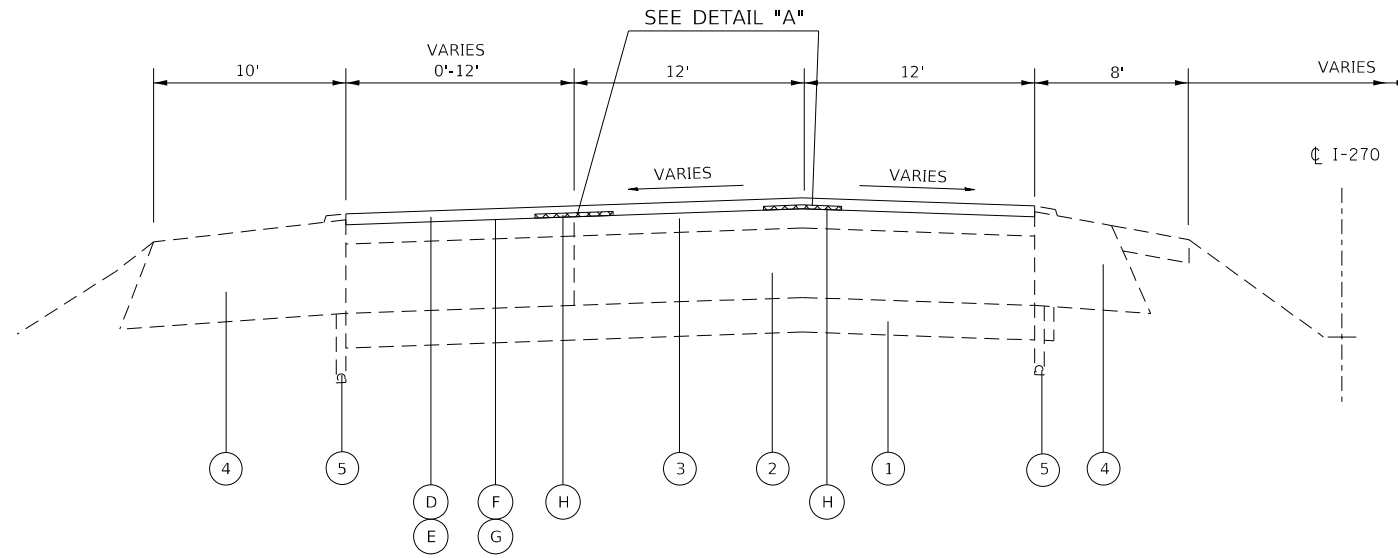
- LEGEND**
- ① EXISTING SUB-BASE GRANULAR MATERIAL
 - ② EXISTING PCC PAVEMENT, 10"
 - ③ EXISTING HOT-MIX ASPHALT OVERLAY
 - ④ EXISTING HOT-MIX ASPHALT SHOULDER
 - ⑤ EXISTING UNDERDRAIN
 - ⑥ EXISTING AGGREGATE SHOULDER
 - (A) PROPOSED HMA SURFACE REMOVAL, 3" — SEE SCHEDULES FOR LOCATIONS
 - (B) PROPOSED HMA SURFACE REMOVAL, 1 1/4" — SEE SCHEDULES FOR LOCATIONS
 - (C) PROPOSED HMA SURFACE REMOVAL, 1 1/2" — SEE SCHEDULES FOR LOCATIONS
 - (D) PROPOSED POLYMERIZED HOT-MIX ASPHALT SURFACE COURSE, STONE MATRIX ASPHALT, 12.5 MIX "E", N80, 2 1/2" — SEE SCHEDULES FOR LOCATIONS
 - (E) PROPOSED ULTRA-THIN BONDED WEARING COURSE, IL 12.5 UTB, MIX "E"
 - (F) PROPOSED POLYMERIZED BITUMINOUS MATERIALS (TACK COAT)
 - (G) PROPOSED RAPID SETTING POLYMER MODIFIED EMULSION (TACK COAT) — SEE SCHEDULES FOR LOCATIONS
 - (H) PROPOSED LONGITUDINAL JOINT SEALANT — SEE SCHEDULES FOR LOCATIONS

FILE NAME =	USER NAME = chollandeske	DESIGNED -	REVISED -
pw:\planroom.dot.illinois.gov\PIWIDOT\Documents\IDOT Offices\District 8\Projects\0876N66\0876N66-CAD\Sheets\0876N66-shr-typical.dgn		CHECKED -	REVISED -
Default	PLOT DATE = 2/20/2020	DATE -	REVISED -

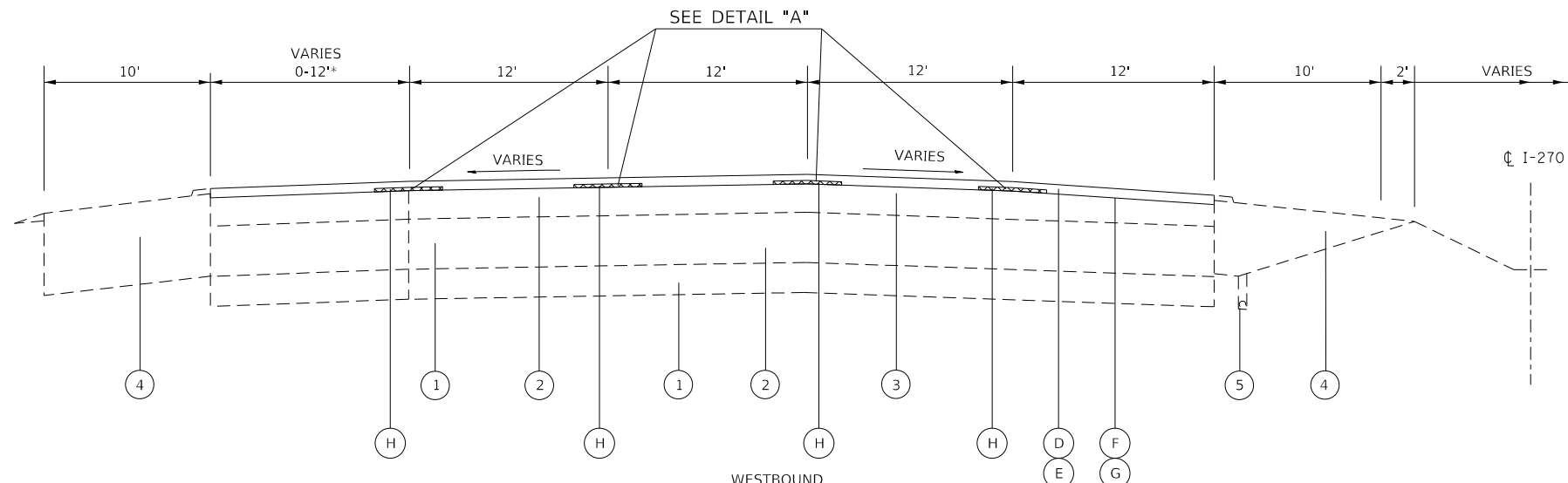
**STATE OF ILLINOIS
DEPARTMENT OF TRANSPORTATION**

PROPOSED TYPICAL SECTIONS MAINLINE I-270			
SCALE: N/A	SHEET	OF SHEETS	STA. TO STA.

F.A.I. RTE.	SECTION	COUNTY	TOTAL SHEETS	SHEET NO.
270	60-(1,2,3,4,5)-IRS-6	MADISON	34	12
CONTRACT NO. 76N66				
ILLINOIS FED. AID PROJECT				



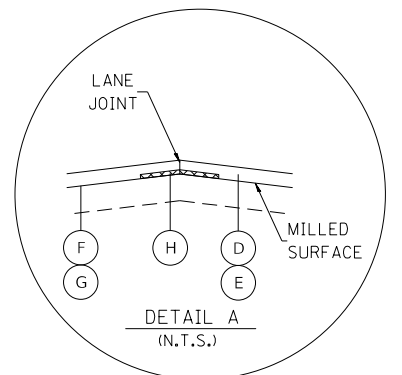
WESTBOUND
 STA. 403+11 TO STA. 412+30
 STA. 587+00 TO STA. 590+00
 STA. 839+47 TO STA. 848+05
 STA. 852+43 TO STA. 856+00



WESTBOUND
 STA. 424+10 TO STA. 430+10
 STA. 544+75 TO STA. 559+16
 *STA. 430+10 TO STA. 438+89 - 5-12' LANES

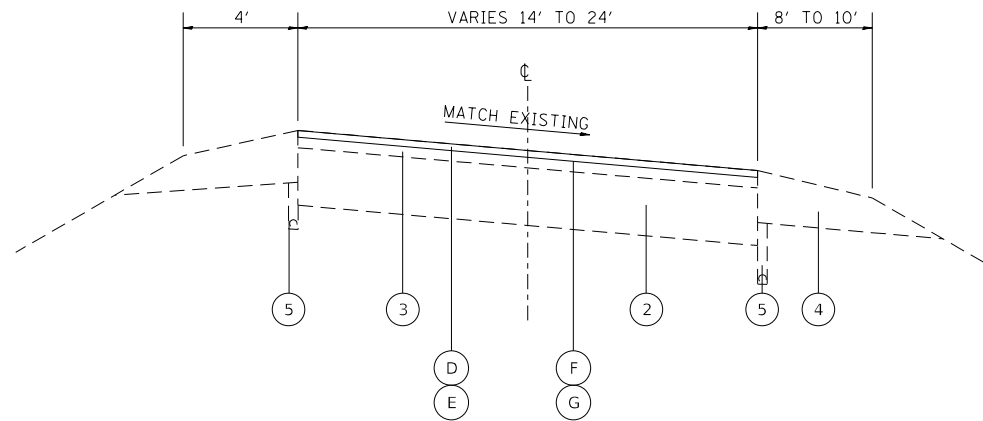
LEGEND

- ① EXISTING SUB-BASE GRANULAR MATERIAL
- ② EXISTING PCC PAVEMENT, 10"
- ③ EXISTING HOT-MIX ASPHALT OVERLAY
- ④ EXISTING HOT-MIX ASPHALT SHOULDER
- ⑤ EXISTING UNDERDRAIN
- ⑥ EXISTING AGGREGATE SHOULDER
- Ⓐ PROPOSED HMA SURFACE REMOVAL, 3" — SEE SCHEDULES FOR LOCATIONS
- Ⓑ PROPOSED HMA SURFACE REMOVAL, 1 1/4" — SEE SCHEDULES FOR LOCATIONS
- Ⓒ PROPOSED HMA SURFACE REMOVAL, 1 1/2" — SEE SCHEDULES FOR LOCATIONS
- Ⓓ PROPOSED POLYMERIZED HOT-MIX ASPHALT SURFACE COURSE, STONE MATRIX ASPHALT, 12.5 MIX "E", N80, 2 1/2" — SEE SCHEDULES FOR LOCATIONS
- Ⓔ PROPOSED ULTRA-THIN BONDED WEARING COURSE, IL 12.5 UTB, MIX "E"
- Ⓕ PROPOSED POLYMERIZED BITUMINOUS MATERIALS (TACK COAT)
- Ⓖ PROPOSED RAPID SETTING POLYMER MODIFIED EMULSION (TACK COAT) — SEE SCHEDULES FOR LOCATIONS
- Ⓗ PROPOSED LONGITUDINAL JOINT SEALANT — SEE SCHEDULES FOR LOCATIONS

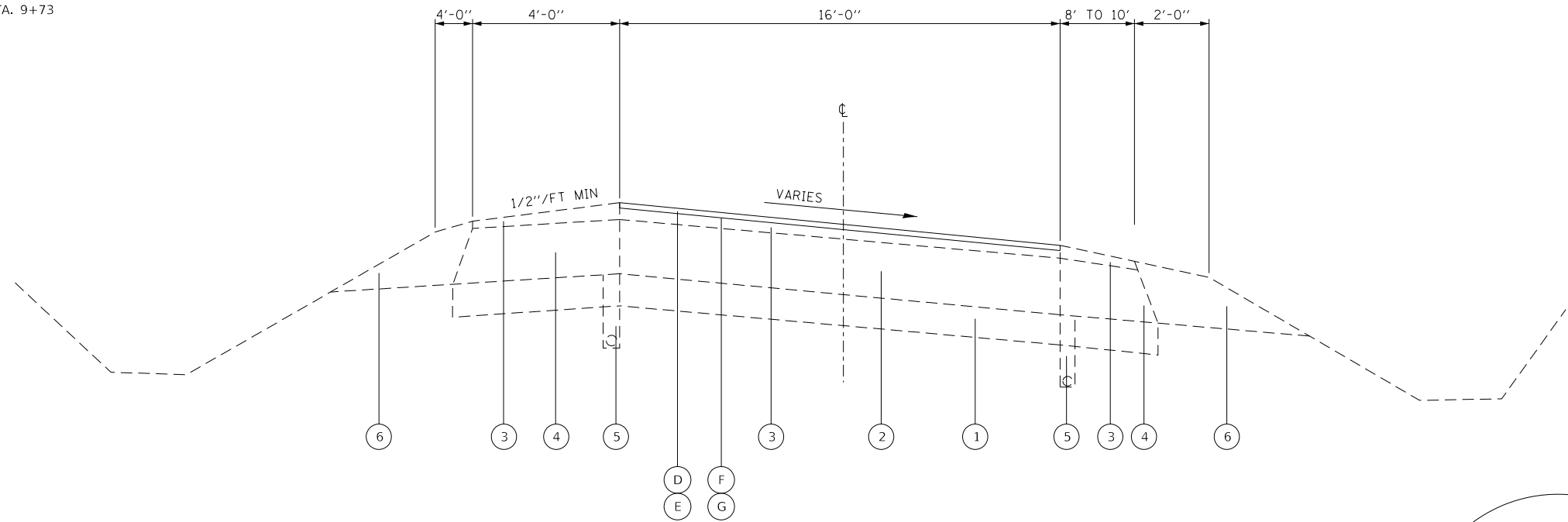


**DETAIL "A" SHALL BE APPLIED ALONG THE CENTERLINE OF PAVEMENT

FILE NAME =	USER NAME = chollandeske	DESIGNED -	REVISED -	STATE OF ILLINOIS DEPARTMENT OF TRANSPORTATION	PROPOSED TYPICAL SECTIONS MAINLINE I-270			F.A.I. RTÉ.	SECTION	COUNTY	TOTAL SHEETS	SHEET NO.
pw:\planroom.dot.illinois.gov\PIWIDOT\Documents\IDOT Offices\District 8\Projects\0876N66\BRAND\CAD\Sheets\0876N66-sh-typical.dgn		CHECKED -	REVISED -		270	60-(1,2,3,4,5)-IRS-6	MADISON	34	13			
Default	PLOT SCALE = 100.0000' / in.	DATE -	REVISED -		SCALE: N/A SHEET OF SHEETS STA. TO STA.			CONTRACT NO. 76N66				
	PLOT DATE = 2/20/2020							ILLINOIS FED. AID PROJECT				



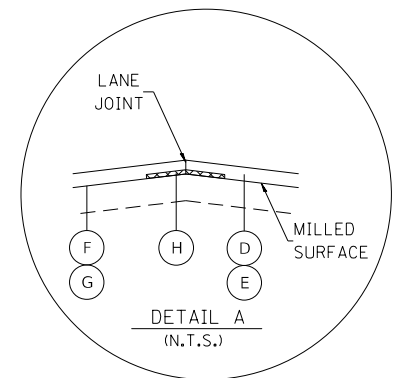
I-270 WB ON RAMP AT IL 157 RAMP 1 - STA. 146+97 TO STA. 153+93
 I-270 EB OFF RAMP AT IL 157 RAMP 2 - STA. 257+22 TO STA. 274+33 - NO PROPOSED WORK
 I-270 WB OFF RAMP AT IL 157 RAMP 3 - STA. 6+21 TO STA. 13+95
 I-270 EB ON RAMP AT IL 157 RAMP 4 - STA. 1+33 TO STA. 10+20
 I-270 WB ON RAMP AT IL 159 RAMP 1 - STA. 2+37 TO STA. 10+18
 I-270 EB OFF RAMP AT IL 159 RAMP 2 - STA. 5+56 TO STA. 14+18
 I-270 WB OFF RAMP AT IL 159 RAMP 3 - STA. 14+61 TO STA. 17+26
 I-270 EB ON RAMP AT IL 159 RAMP 4 - STA. 2+37 TO STA. 9+73



IL 203
RAMP: B(1-8)

LEGEND

- ① EXISTING SUB-BASE GRANULAR MATERIAL
- ② EXISTING PCC PAVEMENT, 10"
- ③ EXISTING HOT-MIX ASPHALT OVERLAY
- ④ EXISTING HOT-MIX ASPHALT SHOULDER
- ⑤ EXISTING UNDERDRAIN
- ⑥ EXISTING AGGREGATE SHOULDER
- (A) PROPOSED HMA SURFACE REMOVAL, 3" — SEE SCHEDULES FOR LOCATIONS
- (B) PROPOSED HMA SURFACE REMOVAL, 1 1/4" — SEE SCHEDULES FOR LOCATIONS
- (C) PROPOSED HMA SURFACE REMOVAL, 1 1/2" — SEE SCHEDULES FOR LOCATIONS
- (D) PROPOSED POLYMERIZED HOT-MIX ASPHALT SURFACE COURSE, STONE MATRIX ASPHALT, 12.5 MIX "E", N80, 2 1/2" — SEE SCHEDULES FOR LOCATIONS
- (E) PROPOSED ULTRA-THIN BONDED WEARING COURSE, IL 12.5 UTB, MIX "E"
- (F) PROPOSED POLYMERIZED BITUMINOUS MATERIALS (TACK COAT)
- (G) PROPOSED RAPID SETTING POLYMER MODIFIED EMULSION (TACK COAT) — SEE SCHEDULES FOR LOCATIONS
- (H) PROPOSED LONGITUDINAL JOINT SEALANT — SEE SCHEDULES FOR LOCATIONS



**DETAIL "A" SHALL BE APPLIED ALONG THE CENTERLINE OF PAVEMENT

FILE NAME =	USER NAME = challandeske	DESIGNED -	REVISED -
pw:\planroom.dot.illinois.gov\PIDOT\Documents\IDOT Offices\District 8\Projects\0876N66\BRAND\CAD\Sheets\0876N66-sht-typical.dgn		CHECKED -	REVISED -
Default	PLOT DATE = 2/20/2020	DATE -	REVISED -

STATE OF ILLINOIS
DEPARTMENT OF TRANSPORTATION

PROPOSED TYPICAL SECTIONS
RAMPS

SCALE: N/A SHEET OF SHEETS STA. TO STA.

F.A.I. RTE.	SECTION	COUNTY	TOTAL SHEETS	SHEET NO.
270	60-(1,2,3,4,5)-IRS-6	MADISON	34	14
			CONTRACT NO. 76N66	
ILLINOIS FED. AID PROJECT				

PARTIAL DEPTH PATCHING SCHEDULE

LOCATION			WIDTH	LENGTH	PARTIAL DEPTH REMOVAL, TYPE I, 3"	PARTIAL DEPTH REMOVAL, TYPE II, 3"	PARTIAL DEPTH REMOVAL, TYPE III, 3"	PARTIAL DEPTH REMOVAL, TYPE IV, 3"	PARTIAL DEPTH PATCHING
MILE STATION	DIRECTION	LANE NO. / COMMENTS	FOOT	FOOT	SQ YD	SQ YD	SQ YD	SQ YD	TON
START AT JOINT EAST OF I-55/70									
0.10	WB	LANE JOINT	2	400			88.9		14.93
0.40	WB	1	12	6		8.0			1.34
0.70	WB	2	12	4	5.3				0.90
0.70	WB	3	9	4	4.0				0.67
0.75	WB	1	12	4	5.3				0.90
0.90	WB	2	12	4	5.3				0.90
0.90	WB	2	12	4	5.3				0.90
0.90	WB	2	12	4	5.3				0.90
1.10	WB	2	12	4	5.3				0.90
1.15	WB	2	12	4	5.3				0.90
1.18	WB	2	12	4	5.3				0.90
1.30	WB	2	12	4	5.3				0.90
1.30	WB	2	12	4	5.3				0.90
1.40	WB	2	12	4	5.3				0.90
1.60	WB	2	12	15		20.0			3.36
1.90	WB	2	12	4	5.3				0.90
2.20	WB	2	12	4	5.3				0.90
2.30	WB	2	12	4	5.3				0.90
2.60	WB	1	12	4	5.3				0.90
2.60	WB	2	12	4	5.3				0.90
2.70	WB	2	12	4	5.3				0.90
3.60	WB	2	12	15		20.0			3.36
3.70	WB	1 - BRG JT	13	4	5.8				0.97
3.70	WB	2 - BRG JT	13	4	5.8				0.97
3.75	WB	1	12	4	5.3				0.90
3.75	WB	1	12	4	5.3				0.90
3.80	WB	1	6	10	6.7				1.12
4.10	WB	2	12	4	5.3				0.90
4.10	WB	2	6	50		33.3			5.60
4.15	WB	1	6	30		20.0			3.36
4.15	WB	1	12	4	5.3				0.90
4.20	WB	2	12	6		8.0			1.34
4.20	WB	2	12	6		8.0			1.34
4.40	WB	2	12	4	5.3				0.90
4.40	WB	2	12	10		13.3			2.24
4.60	WB	1	6	6	4.0				0.67
5.80	WB	1	6	6	4.0				0.67
5.90	WB	2	12	4	5.3				0.90
START AT IL 157									
0.00	EB	3	6	10	6.7				1.12
1.50	EB	1	12	4	5.3				0.90
1.70	EB	2	12	10		13.3			2.24
2.20	EB	1 - BDG JT	13	4	5.8				0.97
2.20	EB	2 - BDG JT	13	4	5.8				0.97
2.23	EB	2	12	4	5.3				0.90
2.70	EB	1	12	4	5.3				0.90
2.70	EB	2	12	4	5.3				0.90
3.00	EB	2	12	4	5.3				0.90
3.01	EB	2	12	4	5.3				0.90
3.10	EB	2	12	4	5.3				0.90
3.60	EB	2	12	4	5.3				0.90
4.20	EB	2 - CONC BDG JT	12	4	5.3				0.90
4.60	EB	2	12	4	5.3				0.90
4.61	EB	2	12	4	5.3				0.90
4.70	EB	2	12	4	5.3				0.90
4.80	EB	2	12	4	5.3				0.90
5.00	EB	1	12	4	5.3				0.90
5.10	EB	2	12	4	5.3				0.90
5.40	EB	3	12	4	5.3				0.90
5.40	EB	2	12	10		13.3			2.24
5.45	EB	3 - BDG JT	12	4	5.3				0.90
5.45	EB	3 - BDG JT	12	4	5.3				0.90
5.45	EB	3 - BDG JT	12	4	5.3				0.90
5.47	EB	2	12	4	5.3				0.90
5.50	EB	2	12	4	5.3				0.90
5.51	EB	2	12	4	5.3				0.90
5.56	EB	2	12	4	5.3				0.90
5.60	EB	2	12	4	5.3				0.90
5.70	EB	2 - CONC JT	12	20		26.7			4.48
5.80	EB	1-2 LANE LINE JT	2	60		13.3			2.24

LOCATION			WIDTH	LENGTH	PARTIAL DEPTH REMOVAL, TYPE I, 3"	PARTIAL DEPTH REMOVAL, TYPE II, 3"	PARTIAL DEPTH REMOVAL, TYPE III, 3"	PARTIAL DEPTH REMOVAL, TYPE IV, 3"	PARTIAL DEPTH PATCHING
MILE STATION	DIRECTION	LANE NO. / COMMENTS	FOOT	FOOT	SQ YD	SQ YD	SQ YD	SQ YD	TON
IL 159 WB EXIT RAMP									
0.30	WB		8	4	3.6				0.60
0.30	WB		16	6		10.7			1.79
IL 159 WB ENTRANCE RAMP									
0.00	WB		16	6		10.7			1.79
0.01	WB		16	8		14.2			2.39
0.02	WB		16	6		10.7			1.79
0.03	WB		16	6		10.7			1.79
0.05	WB		16	4	7.1				1.19
0.08	WB		16	10		17.8			2.99
0.10	WB		16	6		10.7			1.79
0.20	WB		2	40		8.9			1.49
0.25	WB		4	4	1.8				0.30
0.27	WB		4	4	1.8				0.30
0.28	WB		7	2	1.6				0.26
0.33	WB		4	4	1.8				0.30
IL 159 EB ENTRANCE RAMP									
0.00	EB		16	7		12.4			2.09
0.10	EB		16	4	7.1				1.19
0.20	EB		18	4		8.0			1.34
0.20	EB		2	90		20.0			3.36
IL 111 INNER LOOP RAMP									
0.00	EB 255 TO NB 111	INNER EDGE	2	1270				282.2	47.41
0.05	EB 255 TO NB 111		16	12		21.3			3.58
0.00	NB 111 TO WB 255		12	100				133.3	22.40
0.07	NB 111 TO WB 255	INNER EDGE	2	200		44.4			7.47
0.17	NB 111 TO WB 255	INNER EDGE	2	300			66.7		11.20
0.04	WB 255 TO SB 111	INNER EDGE	2	200		44.4			7.47
0.00	SB 111 TO EB 255		12	100				133.3	22.40
0.09	SB 111 TO EB 255	INNER EDGE	2	500				111.1	18.67
0.10	SB 111 TO EB 255		16	15		26.7			4.48
IL 111 OUTER RAMP									
0.00	SB 111 TO WB 255	INNER EDGE	4	20		8.9			1.49
0.03	SB 111 TO WB 255		16	12		21.3			3.58
0.06	SB 111 TO WB 255		16	12		21.3			3.58
0.07	SB 111 TO WB 255		16	30			53.3		8.96
0.15	SB 111 TO WB 255		16	120				213.3	35.84
0.22	SB 111 TO WB 255		2	320				71.1	11.95
0.24	EB 255 TO SB 111	INNER EDGE	2	320				71.1	11.95
0.25	NB 111 TO EB 255	INNER EDGE	2	250				55.6	9.33
0.42	NB 111 TO EB 255	OUTER EDGE	2	250				55.6	9.33
SUBTOTAL					322.5	520.3	462.3	873.2	366.20
ANTICIPATED FAILURES (15%)					48.4	78	69.3	131	54.90
SUBTOTAL					370.9	598.3	531.6	1004.2	421.10
GRAND TOTAL					371	599	532	1005	422

MODEL: Default
FILE: \\hpc\pub\hpcroom\dat\illinois\gov\pww\DOT\Documents\DOT_Offices\Illinois\Projects\076N66\CADDData\CAD\chess\076N66-111-schedule.dgn

USER NAME = challeske	DESIGNED -	REVISED -
PLOT SCALE = 100.0000' / in.	DRAWN -	REVISED -
PLOT DATE = 2/20/2020	CHECKED -	REVISED -
	DATE -	REVISED -

STATE OF ILLINOIS
DEPARTMENT OF TRANSPORTATION

SCHEDULES	
SCALE:	SHEET OF SHEETS STA. TO STA.

F.A.J RTE.	SECTION	COUNTY	TOTAL SHEETS	SHEET NO.
270	60-(1,2,3,4,5)-IRS-6	MADISON	34	15
CONTRACT NO. 76N66				
ILLINOIS FED. AID PROJECT				

RESURFACING SCHEDULE

STATION	TO	STATION	AVG. WIDTH	NO. LANES	LENGTH	HOT-MIX ASPHALT SURFACE REMOVAL 1 1/4"	HOT-MIX ASPHALT SURFACE REMOVAL 1 1/2"	HOT-MIX ASPHALT SURFACE REMOVAL 3"	POLYMERIZED HOT-MIX ASPHALT SURFACE COURSE, SMA, 12.5, MIX "E", N80	POLYMERIZED BITUMINOUS MATERIALS (TACK COAT)	LONGITUDINAL JOINT SEALANT	ULTRA-THIN BONDED WEARING CSE, 1L-12.5 UTB, MIX "E" SPECIAL	RAPID SETTING POLYMER MODIFIED EMULSION	MATERIAL TRANSFER DEVICE
						SQ YD	SQ YD	SQ YD	TON	POUND	FOOT	SQ YD	POUND	TON
EASTBOUND														
258+56	TO	317+66	12	2	5910			15760.0	2206.4	7092.0	5910.0			2206.4
317+66	TO	324+52							BRIDGE OMISSION 060-0042					
324+52	TO	334+05	12	2	953			2541.3	355.8	1143.6	953.0			355.8
334+05	TO	337+78							BRIDGE OMISSION 060-0044					
337+78	TO	399+76	12	2	6198			16528.0	2313.9	7437.6	6198.0			2313.9
399+76	TO	402+92							BRIDGE OMISSION 060-0046					
402+92	TO	406+00	42	1	308			1437.3	201.2	646.8	1078.0			201.2
406+00	TO	433+16	12	4	2716		3621.3	10864.0	1521.0	4888.8	8148.0	* 3621.3	18577.4	1825.2
433+16	TO	492+66	12	3	5950		7933.3	15866.7	2221.3	7140.0	11900.0	* 7933.3	27132.0	2887.7
492+66	TO	500+96	42	1	830		1106.7	2766.7	387.3	1245.0	2905.0	* 1106.7	4731.0	480.3
500+96	TO	510+96	12	4	1000		1333.3	4000.0	560.0	1800.0	3000.0	* 1333.3	6840.0	672.0
510+96	TO	515+70	12	3	474		632.0	1264.0	177.0	568.8	948.0	* 632.0	2161.4	230.0
515+70	TO	533+84	12	4	1814	9674.7						** 9674.7	16543.7	812.7
533+84	TO	553+95	12	4	2011	10725.3						** 10725.3	18340.3	900.9
553+95	TO	607+50	12	3	5355	21420.0						** 21420.0	36628.2	1799.3
607+50	TO	644+37	12	2	3687	9832.0						** 9832.0	16812.7	825.9
644+37	TO	648+81							BRIDGE OMISSION 060-0051					
648+81	TO	685+89	12	2	3708	9888.0						** 9888.0	16908.5	830.6
685+89	TO	689+72							BRIDGE OMISSION 060-0319					
689+72	TO	794+05	12	2	10433	27821.3						** 27821.3	47574.5	2337.0
794+05	TO	798+40							BRIDGE OMISSION 060-0055					
798+40	TO	857+42	12	2	5902	15738.7						** 15738.7	26913.1	1322.0
857+42	TO	860+67							BRIDGE OMISSION 060-0057					
860+67	TO	871+97	12	2	1130	3013.3						** 3013.3	5152.8	253.1
871+97	TO	875+58							BRIDGE OMISSION 060-0059					
875+58	TO	880+04	12	2	446	1189.3						** 1189.3	2033.8	99.9
EB SUB-TOTAL						109302.7	14626.7	71028.0	9944	31963	41040	102479	209669	18552
WESTBOUND														
258+54	TO	317+80	12	2	5926			15802.7	2212.4	7111.2	5926			2212.4
317+80	TO	324+65							BRIDGE OMISSION 060-0043					
324+65	TO	333+87	12	2	922			2458.7	344.2	1106.4	922			344.2
333+87	TO	337+63							BRIDGE OMISSION 060-0045					
337+63	TO	339+97	12	2	234			624.0	87.4	280.8	234			87.4
339+97	TO	403+11							BRIDGE OMISSION 060-0047					
403+11	TO	412+30	30	1	919			3063.3	428.9	827.1	2297.5			428.9
412+30	TO	415+60	12	3	330		440.0	880.0	123.2	396	660	* 440.0	1504.8	160.2
415+60	TO	424+10	12	4	850		1133.3	3400.0	476.0	1530	2550	* 1133.3	5814.0	571.2
424+10	TO	430+10	54	1	600		800.0	2800.0	392.0	1260	2700	* 2800.0	4788.0	627.2
430+10	TO	438+89	12	5	879		1172.0	4688.0	656.3	2109.6	3516	* 1172.0	8016.5	754.8
438+89	TO	515+70	12	3	7681		10241.3	20482.7	2867.6	9217.2	15362	* 10241.3	35025.4	3727.8
515+70	TO	522+89	12	3	719	2876.0						** 2876.0	4918.0	241.6
522+89	TO	528+75	42	1	586	2734.7						** 2734.7	4676.3	229.7
528+75	TO	544+75	12	4	1600	8533.3						** 8533.3	14592.0	716.8
544+75	TO	559+16	54	1	1441	8646.0						** 8646.0	14784.7	726.3
559+16	TO	587+00	12	3	2784	11136.0						** 11136.0	19042.6	935.4
587+00	TO	590+00	30	1	300	1000.0						** 1000.0	1710.0	84.0
590+00	TO	664+09	12	1	7409	9878.7						** 9878.7	16892.5	829.8
664+09	TO	648+75							BRIDGE OMISSION 060-0052					
648+75	TO	686+16	12	2	3741	9976.0						** 9976.0	17059.0	838.0
686+16	TO	690+00							BRIDGE OMISSION 060-0320					
690+00	TO	793+70	12	2	10370	27653.3						** 27653.3	47287.2	2322.9
793+70	TO	795+82							BRIDGE OMISSION 060-0055					
795+82	TO	839+47	12	2	4365	11640.0						** 11640.0	19904.4	977.8
839+47	TO	848+05	30	1	858	2860.0						** 2860.0	4890.6	240.2
848+05	TO	852+43	12	2	438	1168.0						** 1168.0	1997.3	98.1
852+43	TO	856+00	30	1	357	1190.0						** 1190.0	2034.9	100.0
856+00	TO	858+75	12	3	275	1100.0						** 1100.0	1881.0	92.4
858+75	TO	861+00							BRIDGE OMISSION 060-0058					
861+00	TO	885+66	12	2	2466	6576.0						** 6576.0	11245.0	552.4
WB SUB-TOTAL						106968.0	13786.7	54199.3	7587.9	23838.3	34167.5	122754.7	238063.9	17899.3
MAINLINE GRAND TOTAL						216271	28413	125227	17532	55801	75208	225233	447733	36451
RAMPS														
LOCATION			AVG. WIDTH	NO. LANES	LENGTH									
EB I-270 OFF RAMP AT OLD ALTON RD			16	1	1700			3022.2	338.5	1360				338.5
EB I-270 ON RAMP AT OLD ALTON RD			16	1	1100			1955.6	219.0	880				219.0
WB I-270 OFF RAMP AT OLD ALTON RD			16	1	1000			1777.8	199.1	800				199.1
WB I-270 ON RAMP AT OLD ALTON RD			16	1	2000			3555.6	398.2	1600				398.2
EB I-270 OFF RAMP AT IL 203			25	1	1100			3055.6	342.2	1375				342.2
EB I-270 ON RAMP AT IL 203			25	1	1400			3888.9	435.6	1750				435.6
WB I-270 OFF RAMP AT IL 203			25	1	1200			3333.3	373.3	1500				373.3
WB I-270 ON RAMP AT IL 203			25	1	1100			3055.6	342.2	1375				342.2
I-270 EB OFF AT IL 157														
I-270 EB ON AT IL 157			17	1	1600			3022.2					3022.2	5168.0
I-270 WB OFF AT IL 157			16	1	1200			2133.3					2133.3	3648.0
I-270 WB ON AT IL 157			31.5	1	1300			4550.0					4550.0	7780.5
I-270 EB OFF AT IL 159			14	1	1300			2022.2					2022.2	3458.0
I-270 EB ON AT IL 159			14	1	1000			1555.6					1555.6	2660.0
I-270 WB OFF AT IL 159			14	1	1500			2333.3					2333.3	3990.0
I-270 WB ON AT IL 159			14	1	1200			1866.7					1866.7	3192.0
RAMP TOTAL						17483.3	0.0	23644.4	2648.2	10640.0	0.0	17483.3	29896.5	4116.8
GRAND TOTAL						233754	28413	148872	20180	66441	75208	242717	477629	40568

* - 1" ULTRA-THIN THICKNESS ** - 1 1/4" ULTRA-THIN THICKNESS

**STATE OF ILLINOIS
DEPARTMENT OF TRANSPORTATION**

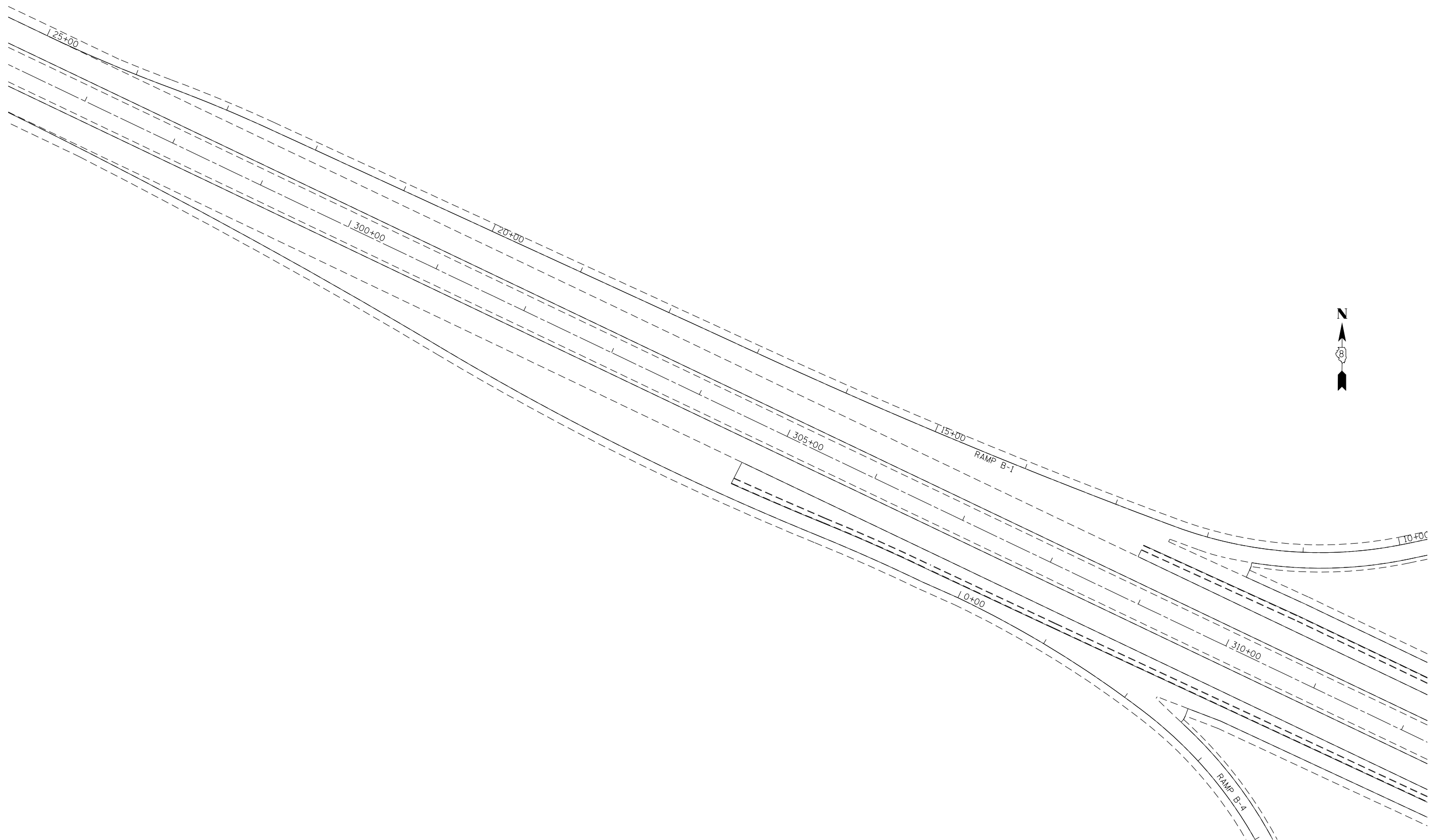
SCHEDULES

USER NAME = challesdeske	DESIGNED -	REVISED -	F.A.J. RTE.	SECTION	COUNTY	TOTAL SHEETS	SHEET NO.
PLOT SCALE = 100,0000' / in.	DRAWN -	REVISED -	270	60-(1,2,3,4,5)-IRS-6	MADISON	34	17
PLOT DATE = 2/20/2020	CHECKED -	REVISED -	CONTRACT NO. 76N66				
	DATE -	REVISED -	ILLINOIS / FED. AID PROJECT				

MODEL: Default
FILE: \\nrc-pixipharoom.datalinks.gov\PIWDOT\Documents\DOT_Offices\Illinet\B\Projects\0676N66\CADD\DATA\CAD\Inres\0676N66-IR-Schedule.dgn

SCALE: SHEET OF SHEETS STA. TO STA.

MODEL: Default
 FILE: \\nashc-pix\pub\lansroom.dwg
 PROJECT: \\nashc-pix\pub\lansroom.dwg
 OFFICE: \\nashc-pix\pub\lansroom.dwg
 DRAWN: \\nashc-pix\pub\lansroom.dwg
 CHECKED: \\nashc-pix\pub\lansroom.dwg
 DATE: 2/20/2020



USER NAME = challeske	DESIGNED -	REVISED -
	DRAWN -	REVISED -
PLOT SCALE = 100.0000' / in.	CHECKED -	REVISED -
PLOT DATE = 2/20/2020	DATE -	REVISED -

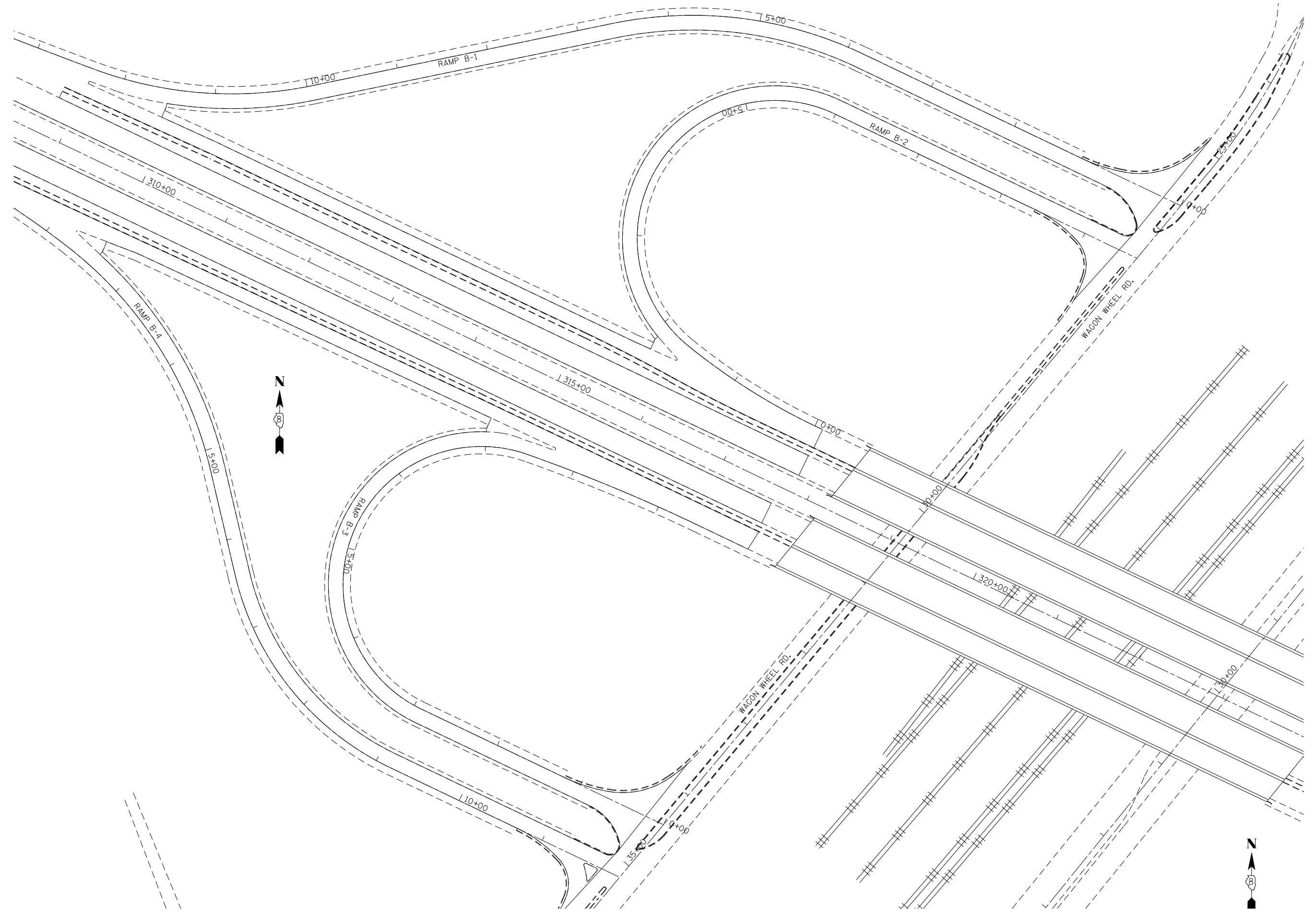
**STATE OF ILLINOIS
 DEPARTMENT OF TRANSPORTATION**

**PAVING DETAILS
 AT OLD ALTON ROAD**

SCALE: 1"=100' SHEET OF SHEETS STA. TO STA.

F.A.I. RTE.	SECTION	COUNTY	TOTAL SHEETS	SHEET NO.
270	60-(1,2,3,4,5)-1RS-6	MADISON	34	19
CONTRACT NO. 76N66				
ILLINOIS		FED. AID PROJECT		

MODEL: Default
 FILE: \\nashville.pics\planningroom\data\illinois.gov\PWIDOT\Documents\DOT_Offices\District 8\Projects\ID76N66\CADD\data\CAD\papers\ID76N66-sh-detailed.dgn



USER NAME = challeske	DESIGNED -	REVISED -
	DRAWN -	REVISED -
PLOT SCALE = 100.0000' / in.	CHECKED -	REVISED -
PLOT DATE = 2/20/2020	DATE -	REVISED -

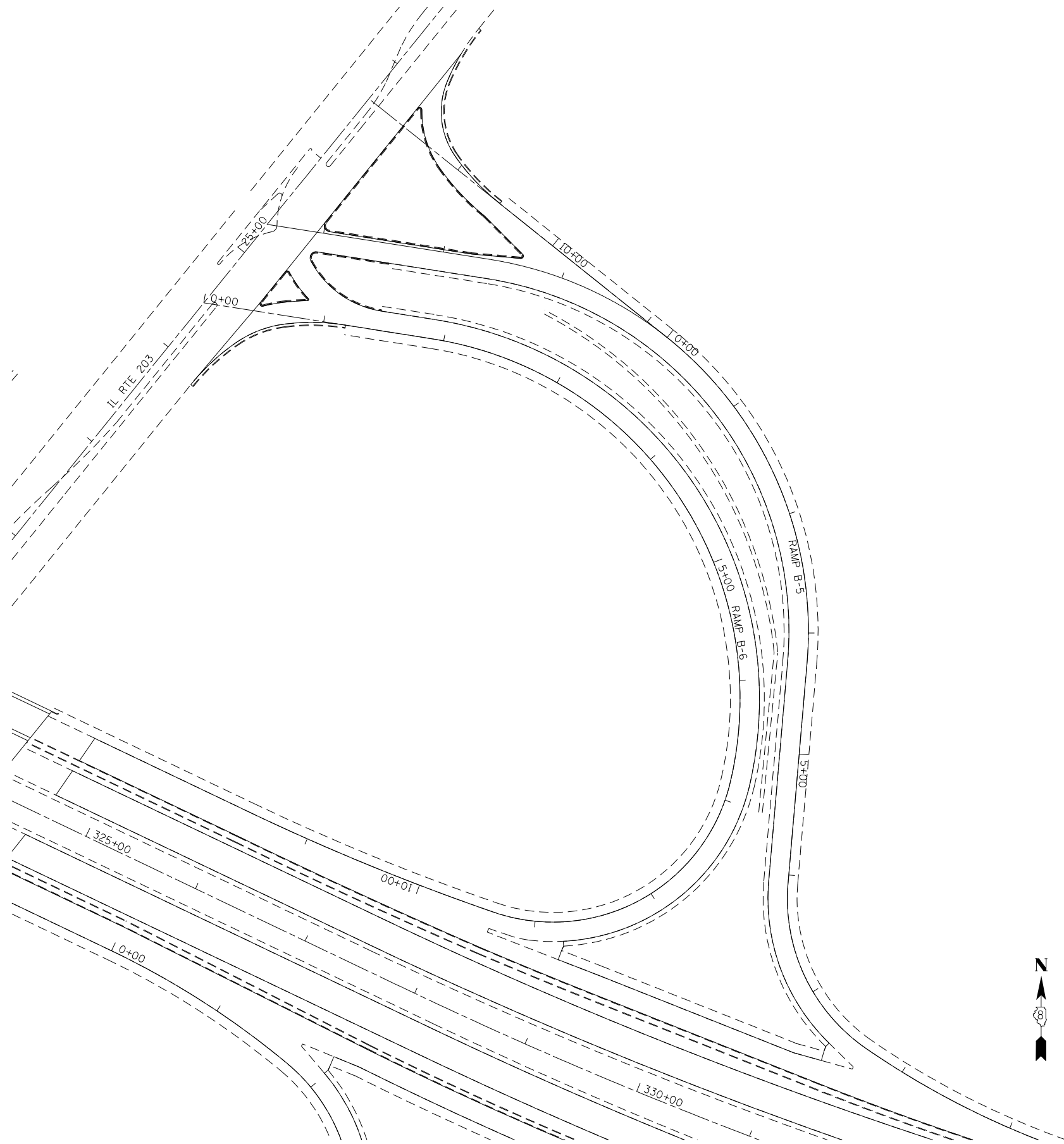
**STATE OF ILLINOIS
 DEPARTMENT OF TRANSPORTATION**

**PAVING DETAILS
 AT OLD ALTON ROAD**

SCALE: 1"=100' SHEET OF SHEETS STA. TO STA.

F.A.I. RTE.	SECTION	COUNTY	TOTAL SHEETS	SHEET NO.
270	60-(1,2,3,4,5)-1RS-6	MADISON	34	20
CONTRACT NO. 76N66				
ILLINOIS FED. AID PROJECT				

MODEL: Default
 FILE: \\nls1c2-pls\planner\room.dat\illinois.gov\PWIDOT\Documents\DOT_Offices\District 8\Projects\ID76N66\CADD\ataCAD\pieces\ID76N66-shc-detailed.dgn



USER NAME = challandeske	DESIGNED -	REVISED -
	DRAWN -	REVISED -
PLOT SCALE = 100.0000' / in.	CHECKED -	REVISED -
PLOT DATE = 2/20/2020	DATE -	REVISED -

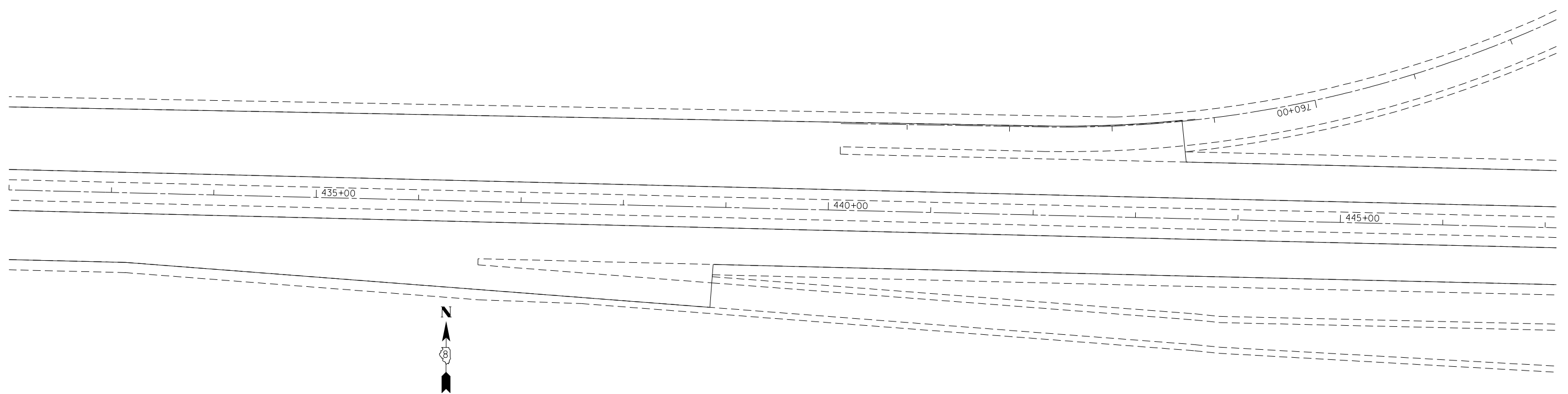
**STATE OF ILLINOIS
 DEPARTMENT OF TRANSPORTATION**

**PAVING DETAILS
 AT IL 203**

SCALE: 1"=100' SHEET OF SHEETS STA. TO STA.

F.A.I. RTE.	SECTION	COUNTY	TOTAL SHEETS	SHEET NO.
270	60-(1,2,3,4,5)-1RS-6	MADISON	34	22
CONTRACT NO. 76N66			ILLINOIS FED. AID PROJECT	

MODEL: Default
 FILE: \\nashville.pw.state.il.us\pww\dot\Documents\DOT_Offices\District 8\Projects\DOT\76N66\CADD\DATA\CAD\Sheet\DOT_76N66-INC-DETAIL.dgn



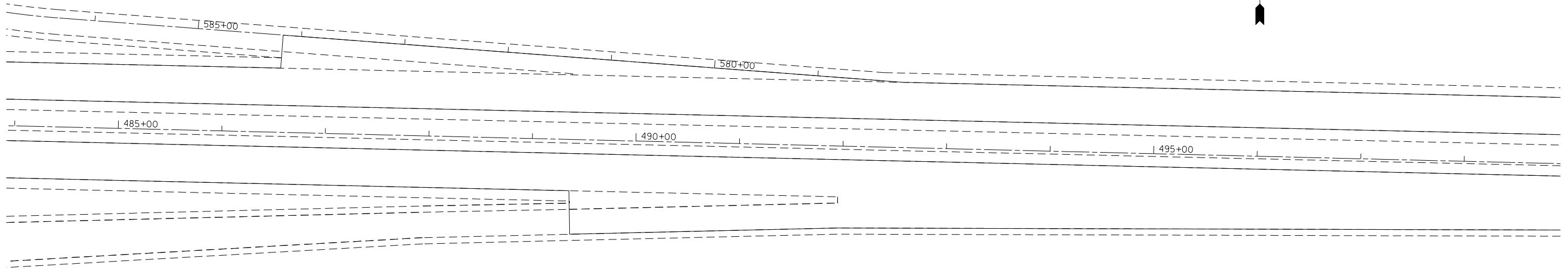
USER NAME = challandeske	DESIGNED -	REVISED -
	DRAWN -	REVISED -
PLOT SCALE = 100.0000' / in.	CHECKED -	REVISED -
PLOT DATE = 2/20/2020	DATE -	REVISED -

**STATE OF ILLINOIS
 DEPARTMENT OF TRANSPORTATION**

**PAVING DETAILS
 AT I-255**

SCALE: 1"=100' SHEET OF SHEETS STA. TO STA.

F.A.I. RTE.	SECTION	COUNTY	TOTAL SHEETS	SHEET NO.
270	60-(1,2,3,4,5)-1RS-6	MADISON	34	23
CONTRACT NO. 76N66				
		ILLINOIS	FED. AID PROJECT	



MODEL: Default
 FILE: \\nashville.pics\planningroom\data\illinois.gov\PWIDOT\Documents\DOT_Offices\District 8\Projects\IDF76N66\CADD\data\CAD\papers\IDF76N66-sh-detailed.dgn

USER NAME = challandeske	DESIGNED -	REVISED -
	DRAWN -	REVISED -
PLOT SCALE = 100.0000' / in.	CHECKED -	REVISED -
PLOT DATE = 2/20/2020	DATE -	REVISED -

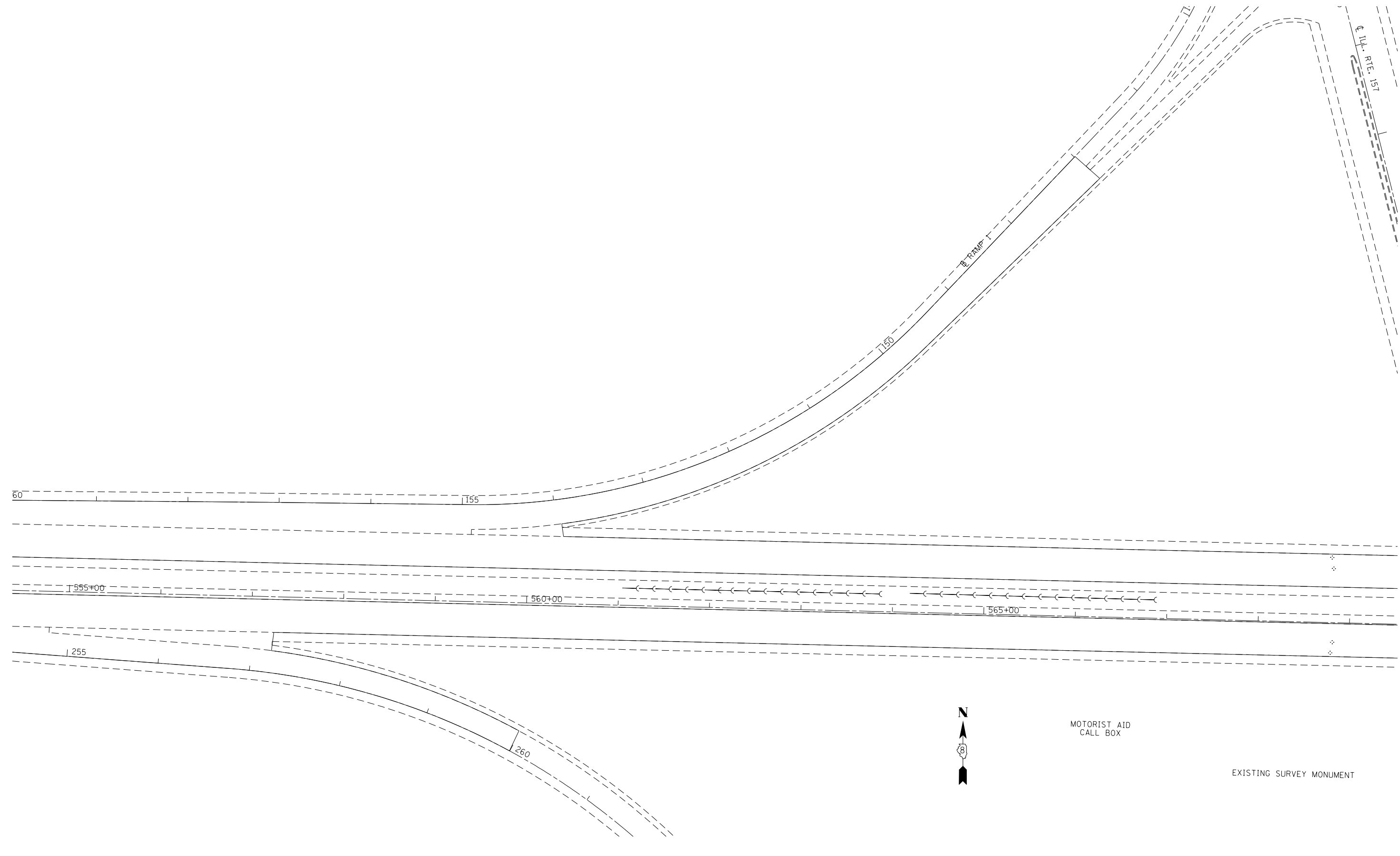
**STATE OF ILLINOIS
 DEPARTMENT OF TRANSPORTATION**

**PAVING DETAILS
 AT I-255**

SCALE: 1"=100' SHEET OF SHEETS STA. TO STA.

F.A.I. RTE.	SECTION	COUNTY	TOTAL SHEETS	SHEET NO.
270	60-(1,2,3,4,5)-1RS-6	MADISON	34	24
CONTRACT NO. 76N66				
		ILLINOIS	FED. AID PROJECT	

MODEL: Default
 FILE: \\nlsr1c1-pix\pub\lansom.dwg\illinois.gov\PWIDOT\Documents\DOT_Offices\District 8\Projects\IDF76N66\CADD\Drawings\IDF76N66-PAVING-DETAILS.dwg



USER NAME = challandeske	DESIGNED -	REVISED -
	DRAWN -	REVISED -
PLOT SCALE = 100.0000' / in.	CHECKED -	REVISED -
PLOT DATE = 2/20/2020	DATE -	REVISED -

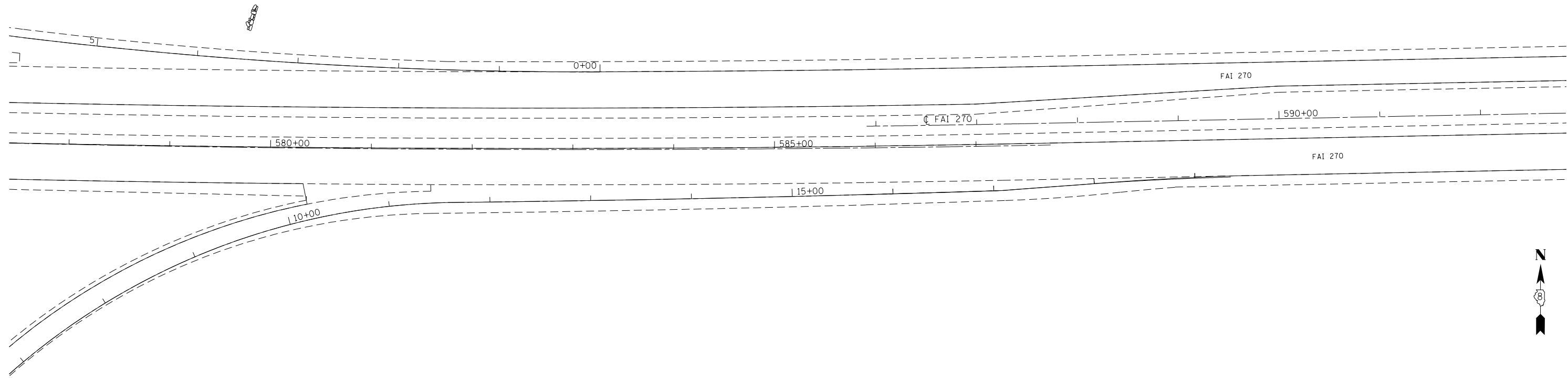
**STATE OF ILLINOIS
 DEPARTMENT OF TRANSPORTATION**

**PAVING DETAILS
 AT IL 157**

SCALE: 1"=100' SHEET OF SHEETS STA. TO STA.

F.A.I. RTE.	SECTION	COUNTY	TOTAL SHEETS	SHEET NO.
270	60-(1,2,3,4,5)-1RS-6	MADISON	34	25
CONTRACT NO. 76N66				
ILLINOIS FED. AID PROJECT				

MODEL: Default
 FILE: \\nashville.pw.state.il.us\pww\dot\Documents\DOT_Offices\District 8\Projects\ID76N66\CADD\DATA\CAD\Inlets\ID76N66-Inv-detailed.dgn



USER NAME = challandeske	DESIGNED -	REVISED -
	DRAWN -	REVISED -
PLOT SCALE = 100.0000' / in.	CHECKED -	REVISED -
PLOT DATE = 2/20/2020	DATE -	REVISED -

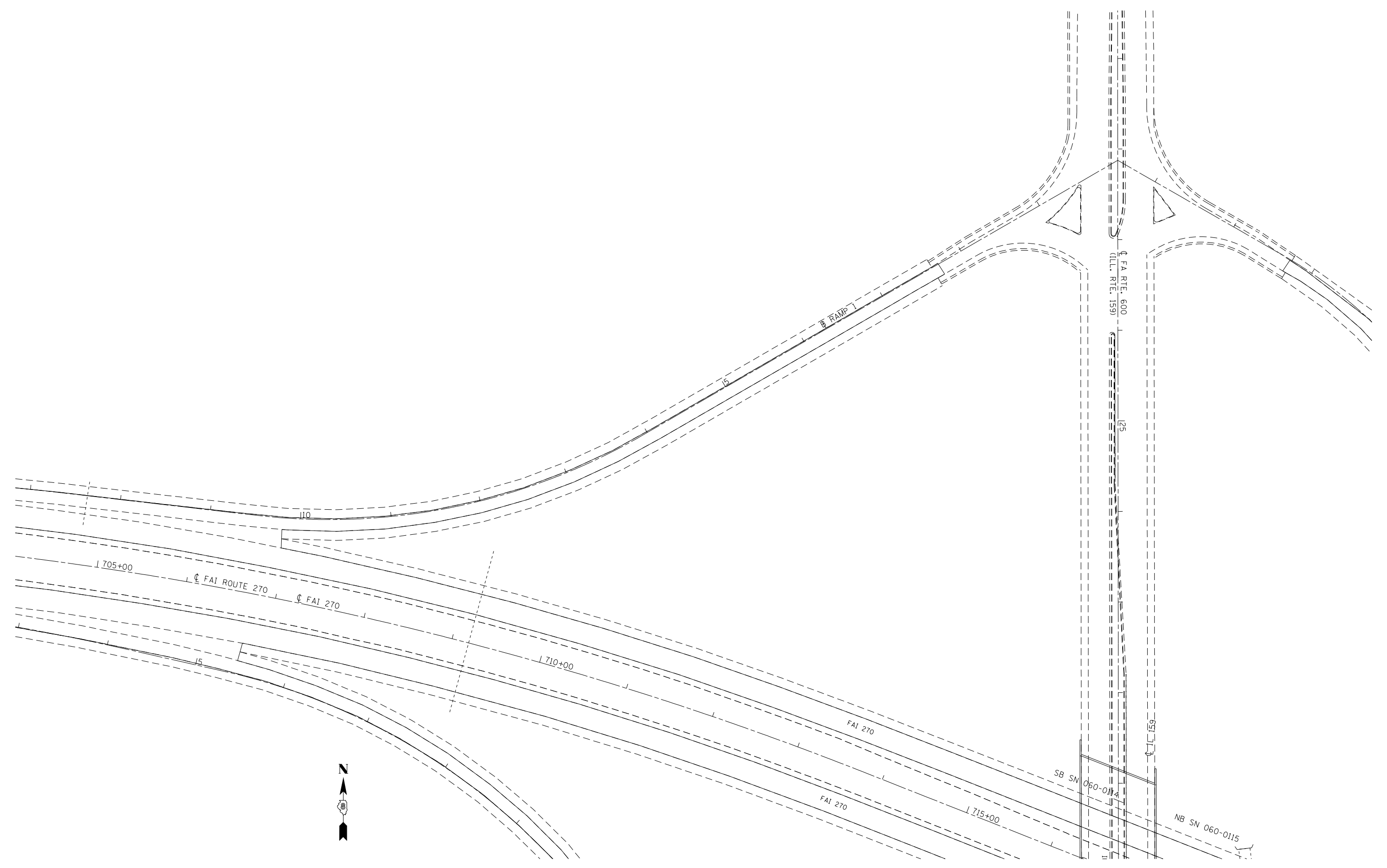
**STATE OF ILLINOIS
 DEPARTMENT OF TRANSPORTATION**

**PAVING DETAILS
 AT IL 157**

SCALE: 1"=100' SHEET OF SHEETS STA. TO STA.

F.A.I. RTE.	SECTION	COUNTY	TOTAL SHEETS	SHEET NO.
270	60-(1,2,3,4,5)-1RS-6	MADISON	34	28
CONTRACT NO. 76N66				
ILLINOIS		FED. AID PROJECT		

MODEL: Default
 FILE: \\nlsr\c:\p\uplanroom\dat\illinois\gov\p\w\dot\Documents\DOT_Offices\District_8\Projects\DOT\76N66\CADD\Drawings\DOT_76N66-11c-detailed.dgn



USER NAME = challeske	DESIGNED -	REVISED -
	DRAWN -	REVISED -
PLOT SCALE = 100.0000' / in.	CHECKED -	REVISED -
PLOT DATE = 2/20/2020	DATE -	REVISED -

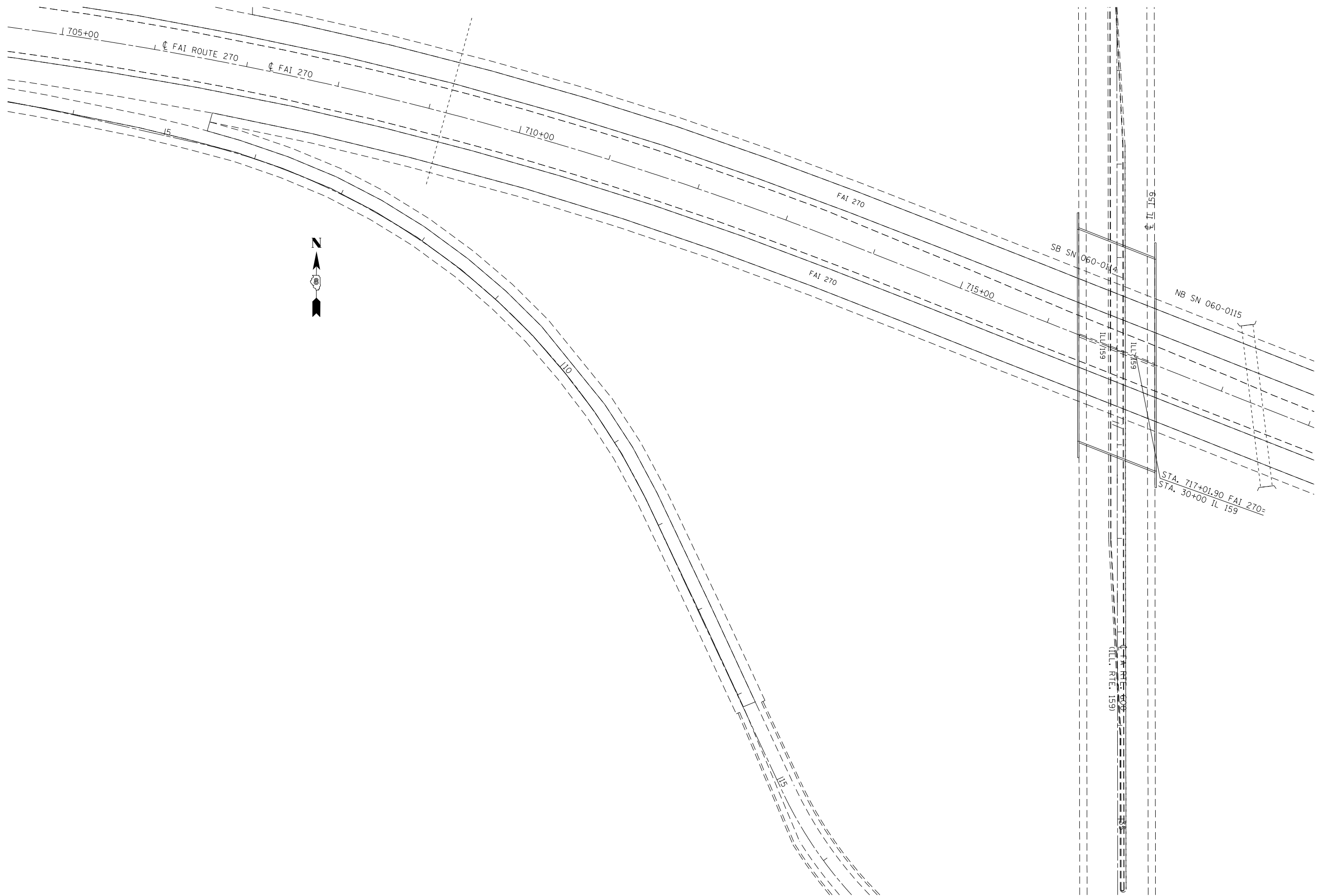
**STATE OF ILLINOIS
 DEPARTMENT OF TRANSPORTATION**

**PAVING DETAILS
 AT IL 159**

SCALE: 1"=100' SHEET OF SHEETS STA. TO STA.

F.A.I. RTE.	SECTION	COUNTY	TOTAL SHEETS	SHEET NO.
270	60-(1,2,3,4,5)-1RS-6	MADISON	34	29
CONTRACT NO. 76N66			ILLINOIS FED. AID PROJECT	

MODEL: Default
 FILE: \\nashc-pix\pub\room\dat\illinois.gov\PIWIDOT\Documents\DOT_Offices\District_8\Projects\0776N66\CADD\ata\CAD\pieces\0776N66-shc-detailed.dgn



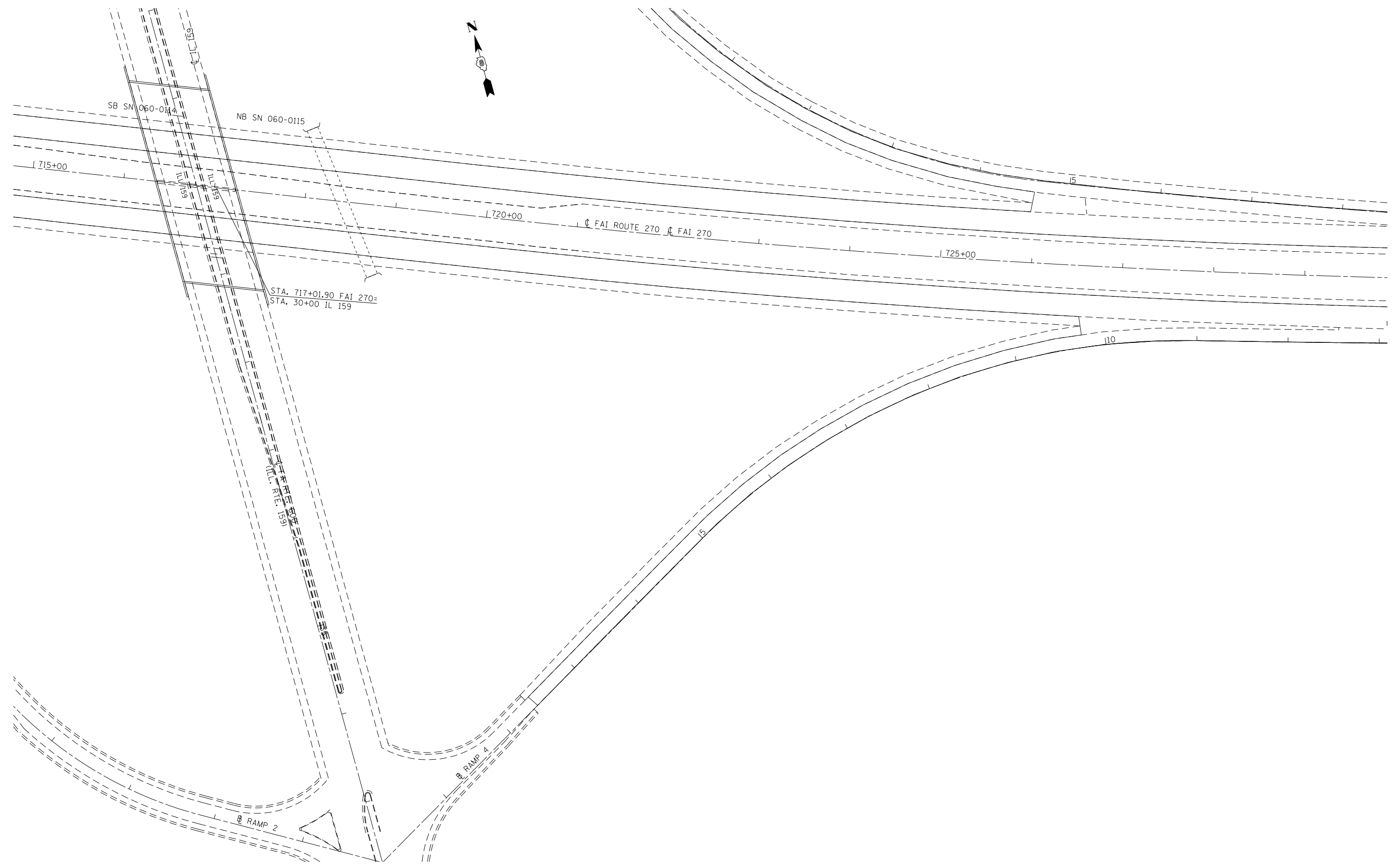
USER NAME = challandeske	DESIGNED -	REVISED -
	DRAWN -	REVISED -
PLOT SCALE = 100.0000' / in.	CHECKED -	REVISED -
PLOT DATE = 2/20/2020	DATE -	REVISED -

**STATE OF ILLINOIS
 DEPARTMENT OF TRANSPORTATION**

PAVING DETAILS AT IL 159	
SCALE: 1"=100'	SHEET OF SHEETS STA. TO STA.

F.A.I. RTE.	SECTION	COUNTY	TOTAL SHEETS	SHEET NO.
270	60-(1,2,3,4,5)-1RS-6	MADISON	34	30
CONTRACT NO. 76N66			ILLINOIS FED. AID PROJECT	

MODEL: Default
 FILE: \\nrc\p\pub\lansroom\dat\illinois.gov\PWIDOT\Documents\DOT_Offices\District 8\Projects\067\76N66\CADD\DATA\CAD\pieces\067\76N66-shc-detailed.dgn

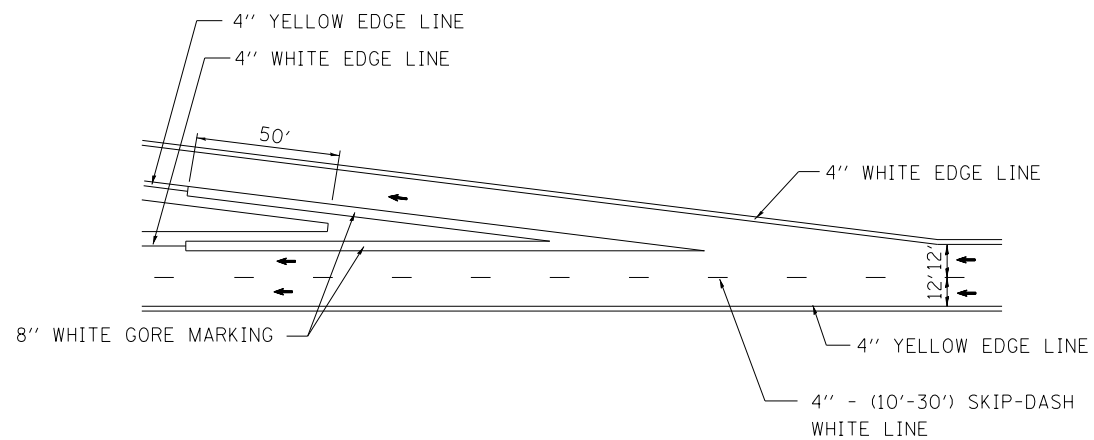


USER NAME = challeske	DESIGNED -	REVISED -
	DRAWN -	REVISED -
PLOT SCALE = 100.0000' / in.	CHECKED -	REVISED -
PLOT DATE = 2/20/2020	DATE -	REVISED -

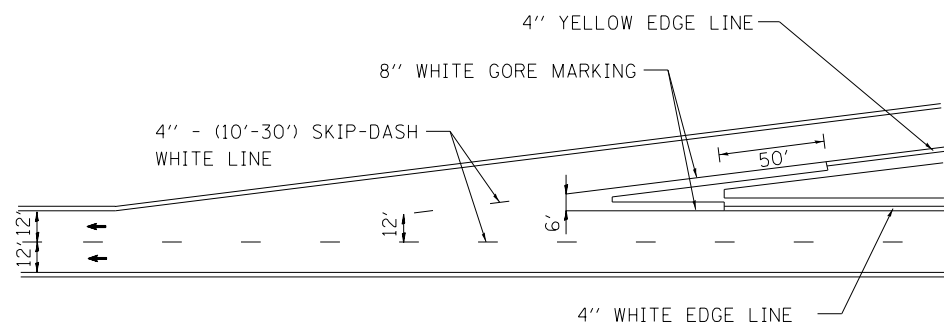
**STATE OF ILLINOIS
 DEPARTMENT OF TRANSPORTATION**

PAVING DETAILS AT IL 159		SCALE: 1"=100'	SHEET	OF	SHEETS	STA.	TO	STA.

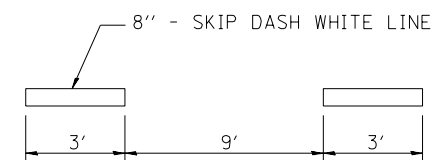
F.A.I. RTE.	SECTION	COUNTY	TOTAL SHEETS	SHEET NO.
270	60-(1,2,3,4,5)-1RS-6	MADISON	34	32
CONTRACT NO. 76N66				
ILLINOIS		FED. AID PROJECT		



TYPICAL EXIT RAMP MARKINGS



TYPICAL ENTRANCE RAMP MARKINGS



TYPICAL APPLICATION FOR WHITE SKIP-DASH LANE LINES

8" - (3'-9') SKIP-DASH WHITE LINE DETAIL

MODEL: Default
 FILE: \\nls1c1-pix\uplanroom\dat\illinois.gov\PIWDOT\Documents\DOT_Offices\District 8\Projects\076N66\CADD\ata\CAD\sheet\076N66-shc-detailed.dgn

USER NAME = challeske	DESIGNED -	REVISED -
	DRAWN -	REVISED -
PLOT SCALE = 100,0000' / in.	CHECKED -	REVISED -
PLOT DATE = 2/20/2020	DATE -	REVISED -

STATE OF ILLINOIS
DEPARTMENT OF TRANSPORTATION

PAVEMENT MARKING DETAILS

SCALE: SHEET OF SHEETS STA. TO STA.

F.A.I. RTE.	SECTION	COUNTY	TOTAL SHEETS	SHEET NO.
270	60-(1,2,3,4,5)-1RS-6	MADISON	34	33
CONTRACT NO. 76N66				
ILLINOIS FED. AID PROJECT				

