

STATE OF ILLINOIS
DEPARTMENT OF TRANSPORTATION
DIVISION OF HIGHWAYS

**PROPOSED
HIGHWAY PLANS**

SECTION 19-00103-00-SW
PROJECT VOSL(623)
SAFE ROUTES TO SCHOOLS PROGRAM
SIDEWALK IMPROVEMENTS
CITY OF COLCHESTER
McDONOUGH COUNTY

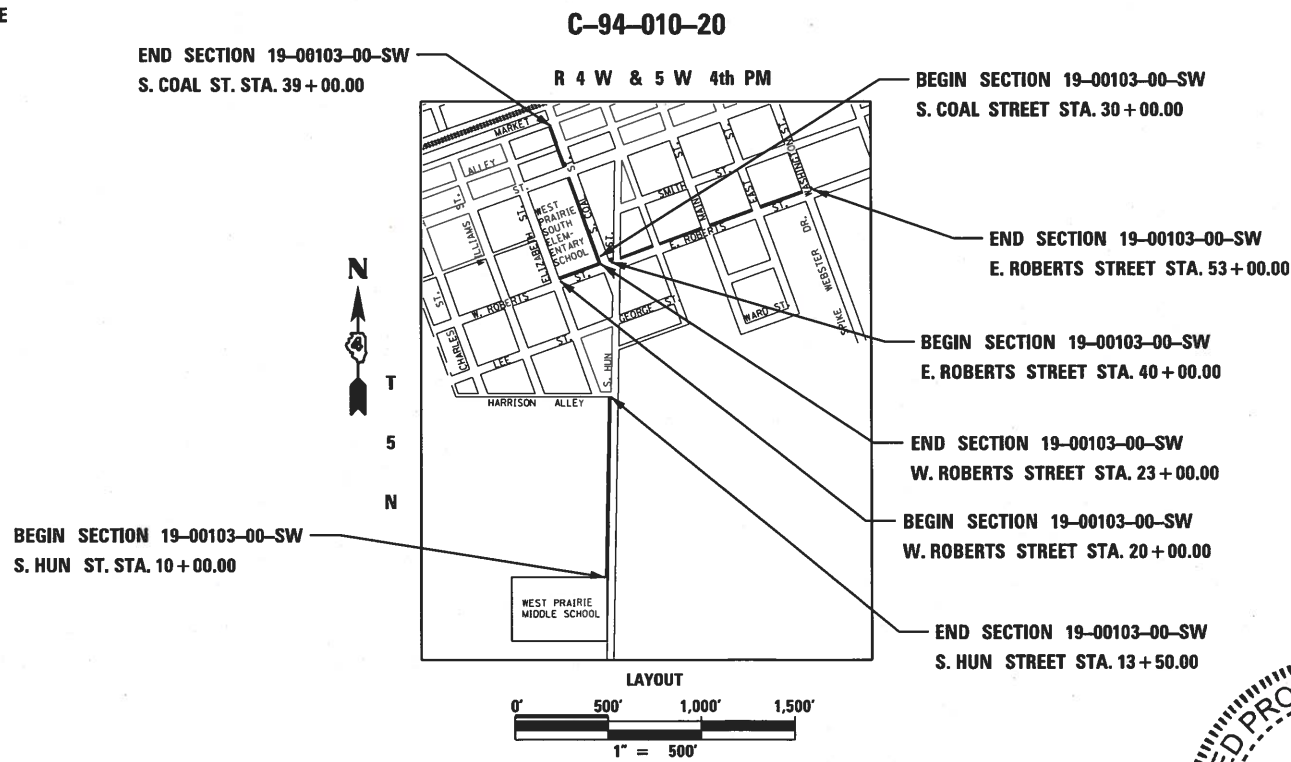
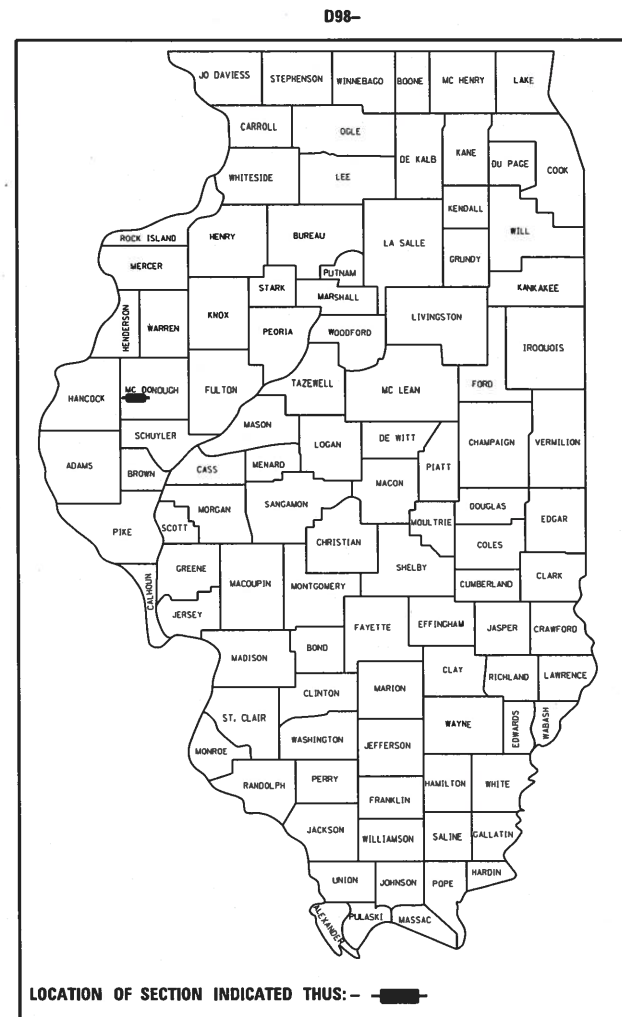
F.A. RTE.	SECTION	COUNTY	TOTAL SHEETS	SHEET NO.
	19-00103-00-SW	McDONOUGH	15	1
ILLINOIS			CONTRACT NO. 89772	

INDEX OF SHEETS

- 1 COVER SHEET
- 2 GENERAL NOTES
- 3-4 SUMMARY OF QUANTITIES
- 5 TYPICAL SECTIONS
- 6 ALIGNMENT & BENCHMARKS
- 7 CONTROL TIES
- 8 PLAN AND PROFILE S. HUN STREET
- 9 PLAN AND PROFILE W. ROBERTS STREET
- 10-11 PLAN AND PROFILE S. COAL STREET (W. ROBERTS ST. TO MARKET ST.)
- 12-14 PLAN AND PROFILE E. ROBERTS STREET (S. COAL ST. TO WASHINGTON ST.)
- 15 CONSTRUCTION DETAILS

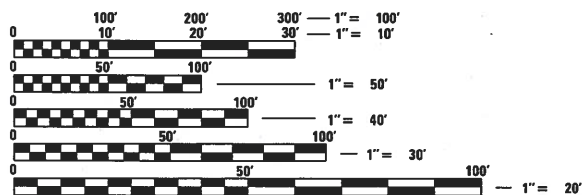
HIGHWAY STANDARDS

- 000001-07 - STANDARD SYMBOLS, ABBREVIATIONS AND PATTERNS
- 280001-07 - TEMPORARY EROSION CONTROL SYSTEMS
- 424001-11 - PERPENDICULAR CURB RAMPS FOR SIDEWALKS
- 701006-05 - OFF-RD OPERATIONS, 2L, 2W, 15' TO 24" FROM PAVEMENT EDGE
- 701301-04 - LANE CLOSURE, 2L, 2W, SHORT TIME OPERATIONS
- 701501-06 - URBAN LANE CLOSURE, 2L, 2W, UNDIVIDED
- 701801-06 - SIDEWALK, CORNER OR CROSSWALK CLOSURE
- 701901-08 - TRAFFIC CONTROL DEVICES



LAYOUT
0' 500' 1,000' 1,500'
1" = 500'

LENGTH OF IMPROVEMENT S. HUN STREET = 350.00 FEET = 0.066 MILES
 LENGTH OF IMPROVEMENT W. ROBERTS STREET = 300.00 FEET = 0.057 MILES
 LENGTH OF IMPROVEMENT S. COAL STREET = 1600.00 FEET = 0.303 MILES
 LENGTH OF IMPROVEMENT E. ROBERTS STREET = 1300.00 FEET = 0.246 MILES
 TOTAL LENGTH OF IMPROVEMENTS = 3550.00 FT. = 0.672 MILE
 NET LENGTH OF IMPROVEMENTS = 2601.05 FT. = 0.492 MILE



FULL SIZE PLANS HAVE BEEN PREPARED USING STANDARD ENGINEERING SCALES. REDUCED SIZED PLANS WILL NOT CONFORM TO STANDARD SCALES. IN MAKING MEASUREMENTS ON REDUCED PLANS, THE ABOVE SCALES MAY BE USED.

J.U.L.I.E.
JOINT UTILITY LOCATION INFORMATION FOR EXCAVATION
1-800-892-0123
OR 811



BY _____
DATE _____

STATE OF ILLINOIS
DEPARTMENT OF TRANSPORTATION
DIVISION OF HIGHWAYS

APPROVED 2/5 2020
James Walsh
MAYOR - CITY OF COLCHESTER

PASSED 2/10 2020
Tony J. Levine
DISTRICT ENGINEER OF LOCAL ROADS & STREETS

Releasing For Bid Based on Limited Review 2/10 2020
Kennel A. Barnett
REGION 3 ENGINEER

CATALOG NO. 035842
CONTRACT NO. 89772

BENTON & ASSOCIATES, INC.
804 W. Jackson St., P.O. Box 661, Macomb IL 61455
(309) 837-3151 (217) 245-4149 Fax

Jacksonville Illinois
Kirksville Missouri
Macon Missouri
Rolla Missouri
Lebanon Missouri

**PRINTED BY THE AUTHORITY
OF THE STATE OF ILLINOIS**

GENERAL NOTES

- THE LOCATION OF UNDERGROUND UTILITIES SHOWN ON THE PLANS REPRESENTS THE BEST KNOWLEDGE OF THE OWNER AND THE INDICATED ADJUSTMENTS ARE CONSIDERED TO BE REASONABLY ACCURATE. IT SHALL BE THE CONTRACTORS RESPONSIBILITY TO VERIFY LOCATIONS OF UNDERGROUND INSTALLATIONS BEFORE STARTING CONSTRUCTION OPERATIONS. THE CONTRACTOR SHALL INDEMNIFY THE OWNER, ITS OFFICERS AND EMPLOYEES AGAINST ALL CLAIMS DUE TO DAMAGE TO CORPORATE OR PRIVATE PROPERTY RESULTING FROM HIS/HER CONSTRUCTION OPERATIONS AS DESCRIBED IN ARTICLE 107.20 AND 107.26 OF THE STANDARD SPECIFICATIONS FOR ROAD AND BRIDGE CONSTRUCTION.
- THIS SECTION SHALL BE CONSTRUCTED IN ACCORDANCE WITH THE PLANS, THE "STANDARD SPECIFICATIONS FOR ROAD AND BRIDGE CONSTRUCTION" ADOPTED JANUARY 1, 2016, THE "MANUAL ON UNIFORM TRAFFIC CONTROL DEVICES", THE "SUPPLEMENTAL SPECIFICATIONS AND RECURRING SPECIAL PROVISIONS", AND THE SPECIAL PROVISIONS INCLUDED IN THE PROPOSAL.
- THE CONTRACTOR MAY BE REQUIRED TO CONDUCT SOME OF HIS/HER GRADING OPERATIONS AROUND TRANSMISSION POLES AND UNDER TRANSMISSION LINES. THE ADDED COST OF SO DOING SHALL BE INCLUDED WITH THE COST OF THE CONSTRUCTION ITEM FOR WHICH THE GRADING IS BEING ACCOMPLISHED.
- WHERE SECTION OR SUBSECTION MONUMENTS ARE ENCOUNTERED, THE ENGINEER SHALL BE NOTIFIED BEFORE SUCH MONUMENTS ARE REMOVED. THE CONTRACTOR SHALL PROTECT AND CAREFULLY PRESERVE ALL MONUMENTS UNTIL AN AUTHORIZED SURVEYOR OR AGENT HAS WITNESSED OR OTHERWISE REFERENCED THEIR LOCATION. THE CONTRACTOR WILL BE RESPONSIBLE FOR HAVING AN AUTHORIZED SURVEYOR RE-ESTABLISH ANY SECTION OR SUBSECTION MONUMENTS DESTROYED BY HIS OPERATIONS.
- ALL ELEVATIONS SHOWN REFER TO THE U.S.G.S. DATUM - NORTH AMERICAN VERTICAL DATUM OF 1988 (NAVD88).
- ALL EXISTING ROADWAY FEATURES SUCH AS PAVEMENT, CURB, SIDEWALK, DRIVEWAY PAVEMENT, CULVERTS, HEADWALLS, FENCING, RETAINING WALLS, ETC. WHICH INTERFERE WITH THE PROPOSED CONSTRUCTION SHALL BE REMOVED BY THE CONTRACTOR UNLESS NOTED OTHERWISE ON THE PLANS. ALL MISCELLANEOUS FEATURES WHICH ARE TO BE REMOVED AND FOR WHICH THERE IS NO SPECIFIC PAY ITEM, WILL NOT BE MEASURED SEPARATELY FOR PAYMENT. THE COST OF THIS REMOVAL WORK SHALL BE INCLUDED WITH THE COST OF THE CONSTRUCTION ITEM FOR WHICH THE REMOVAL IS BEING ACCOMPLISHED.
- ALL EXISTING PUBLIC AND MUNICIPAL OWNED UTILITIES REQUIRING ADJUSTMENT WILL BE MADE BY THE UTILITY OWNED INVOLVED UNLESS OTHERWISE NOTED. WHERE NO PROVISIONS HAVE BEEN MADE FOR ADJUSTMENT ON THE PLANS, NO ADDITIONAL COMPENSATION WILL BE ALLOWED DUE TO DELAYS OR INCONVENIENCES CAUSED BY THE SAID UTILITY ADJUSTMENTS.
- IT IS THE CONTRACTORS RESPONSIBILITY TO ASCERTAIN EXISTING FIELD CONDITIONS BEFORE BIDDING ON THIS PROJECT, SPECIFICALLY AS THEY RELATE TO THE LUMP SUM PAY ITEMS.
- ABANDONED UNDERGROUND UTILITIES THAT CONFLICT WITH CONSTRUCTION SHALL BE DISPOSED OUTSIDE THE LIMITS OF RIGHT OF WAY ACCORDING TO ARTICLE 202.03 OF THE STANDARD SPECIFICATIONS AND AS DIRECTED BY THE ENGINEER. THIS WORK WILL NOT BE PAID FOR SEPARATELY, BUT SHALL BE CONSIDERED INCLUDED IN THE COST OF EARTH EXCAVATION AND NO ADDITIONAL COMPENSATION WILL BE ALLOWED.
- THE CONTRACTOR SHALL VERIFY ALL DIMENSIONS AND CONDITIONS IN THE FIELD PRIOR TO CONSTRUCTION AND ORDERING OF MATERIALS.
- REMOVAL OF EXISTING BITUMINOUS SURFACE (OIL AND CHIP), HMA SURFACE, AGGREGATE BASE COURSE AND AGGREGATE SURFACE COURSE SHALL BE CONSIDERED INCIDENTAL TO EARTH EXCAVATION.
- EXISTING PAVEMENT, SIDEWALK AND CURB AND GUTTER DAMAGED DUE TO THE CONTRACTOR'S NEGLIGENCE SHALL BE REPLACED TO THE SATISFACTION OF THE ENGINEER, AT NO ADDITIONAL COST TO THE DEPARTMENT.
- DURING CONSTRUCTION OPERATIONS, THE CONTRACTOR SHALL COMPLY WITH THE LEGAL LOADING LIMITS. THE CONTRACTOR SHALL BE RESPONSIBLE FOR REPAIRING ANY DAMAGE CAUSED BY THE LUGS OR CLEATS ON TREADS OR WHEELS, OR EQUIPMENT, OR BY EXCESSIVE WEIGHTS AND LOADS.
- THE CONTRACTOR SHALL CONFINE HIS/HER OPERATIONS TO THE AREA LOCATED WITHIN THE CONSTRUCTION LIMITS SHOWN ON THE PLANS. ANY AREA DISTURBED BEYOND THESE LIMITS SHALL BE RESTORED TO ITS ORIGINAL CONDITION AT NO ADDITIONAL COST TO THE DEPARTMENT.
- DURING CONSTRUCTION OPERATIONS, IF ANY LOOSE MATERIAL IS DEPOSITED IN THE FLOW LINE OF DITCHES, GUTTERS OR DRAINAGE STRUCTURES SO THAT THE NATURAL FLOW OF WATER IS OBSTRUCTED, IT SHALL BE REMOVED AT THE CLOSE OF EACH WORKING DAY. AT THE CONCLUSION OF CONSTRUCTION OPERATIONS, ALL DRAINAGE STRUCTURES SO AFFECTED SHALL BE FREE FROM ALL DEBRIS. THIS WORK SHALL BE INCLUDED IN THE COST OF EARTH EXCAVATION.
- ALL SAW CUTS THAT ARE INDICATED IN THE PLANS SHALL BE CONSIDERED INCIDENTAL TO THE PORTLAND CEMENT CONCRETE SIDEWALK AND NO ADDITIONAL COST WILL BE ALLOWED.
- ALL AREAS OF SIDEWALK REMOVAL INDICATED IN THE PLANS WHERE NO SIDEWALK IS BEING RECONSTRUCTED SHALL HAVE CLEAN EARTHEN MATERIAL PLACED, GRADED AND SEEDED. THE COST OF THE REQUIRED EARTHEN MATERIAL SHALL BE CONSIDERED INCLUDED IN THE COST OF THE SIDEWALK REMOVAL AND NO ADDITIONAL COST WILL BE ALLOWED.
- ANY NECESSARY TRENCH BACKFILL REQUIRED FOR INSTALLATION OF PIPE CULVERTS AS INDICATED IN THE PLANS SHALL BE INCLUDED IN THE COST OF THE CULVERT PIPE AND NO ADDITIONAL COST WILL BE ALLOWED.
- THE CONTRACTOR SHALL CONSULT WITH THE ENGINEER IN REGARD TO THE EXACT LENGTH OF THE BOX/PIPE CULVERTS, STORM SEWERS AND/OR PIPE DRAINS REQUIRED PRIOR TO ORDERING THESE ITEMS.
- THE METHOD OF MEASUREMENT FOR PAYMENT FOR INCIDENTAL HMA SURFACING SHALL BE AS DESCRIBED IN ARTICLES 408.04 AND 406.13 IN THE STANDARD SPECIFICATIONS FOR ROAD AND BRIDGE CONSTRUCTION, AS STATED IN ARTICLE 1032.02, PAYMENT WILL NOT BE MADE FOR BITUMINOUS MATERIALS IN EXCESS OF 105 PERCENT OF THE AMOUNT SPECIFIED BY THE ENGINEER.

GENERAL NOTES (CONTINUED)

- PRIOR TO THE USE OF ANY PROPOSED BORROW AREAS, USE AREAS (TEMPORARY ACCESS ROADS, DETOURS, RUN-AROUNDS, ETC.) AND/OR WASTE AREAS. THE CONTRACTOR SHALL FILE THE REQUIRED ENVIRONMENTAL RESOURCE REQUEST SURVEYS ACCORDING TO SECTION 107.22 OF THE STANDARD SPECIFICATIONS. THESE SURVEYS ARE REQUIRED IN ORDER FOR THE DEPARTMENT TO CONDUCT CULTURAL AND BIOLOGICAL RESOURCE SURVEYS FOR THE PROPOSED SITE.

THE REQUIRED ENVIRONMENTAL RESOURCE DOCUMENTATION SHALL INCLUDE THE FOLLOWING:

- BDE FORM 2289 (CULTURAL AND NATURAL RESOURCES REVIEW OF BORROW AREA)
- BDE FORM 2290 (WASTE/USE AREA REVIEW)
- A LOCATION MAP SHOWING THE SIZE LIMITS AND LOCATION OF THE USE AREA
- COLOR PHOTOGRAPHS DEPICTING THE USE AREA
- BORROW AREA ENTRY AGREEMENT FORM - D4 P10101

PRIOR TO ANY WASTE MATERIALS BEING REMOVED FROM THE CONSTRUCTION SITE THE REQUIRED ENVIRONMENTAL RESOURCE SURVEYS SHALL BE OBTAINED AND FILED BY THE CONTRACTOR. EXCESS WASTE PRODUCTS REMOVED FROM THE CONSTRUCTION SITE SHALL BE DISPOSED OF AS REQUIRED IN SECTION 202.03 OF THE STANDARD SPECIFICATIONS.

ANY PROTRUDING METAL BARS SHALL BE REMOVED PRIOR TO THE DISPOSAL OF BROKEN CONCRETE AT APPROVED DISPOSAL SITES.

PLEASE NOTE THE MINIMUM OF FOUR WEEKS SHALL BE ALLOWED FOR THE DISTRICT TO OBTAIN THE REQUIRED WASTE SITE ENVIRONMENTAL CLEARANCES AND SIX WEEKS FOR THE REQUIRED BORROW SITE ENVIRONMENTAL CLEARANCES.

TRAFFIC CONTROL

- NO OVERNIGHT LANE CLOSURES WILL BE ALLOWED.
- "ROAD CONSTRUCTION AHEAD" SIGNS SHALL BE PLACED AT THE BEGINNING AND END OF THE PROJECT AND ON THE INTERSECTING SIDE ROADS, AND SHALL BE INCLUDED IN THE TRAFFIC CONTROL PAY ITEMS.
- FLAGMEN SHALL BE PRESENT DURING CLOSURE OF ANY ADJACENT TRAFFIC LANES AND NO ADDITIONAL COMPENSATION SHALL BE ALLOWED.
- FOR STABILIZATION, ALL TYPE III BARRICADES SHALL REQUIRE A MINIMUM OF FOUR SANDBAGS PER BARRICADE.

UTILITY COORDINATION

ILLINOIS STATE LAW REQUIRES A 48 - HOUR NOTICE BE GIVEN TO ALL UTILITIES BEFORE DIGGING. FIELD MARKING OF FACILITIES MAY BE OBTAINED BY CONTACTING J.U.L.I.E. OR FOR NON-MEMBERS, THE UTILITY COMPANY DIRECTLY. AGENCIES KNOWN TO HAVE FACILITIES WITHIN THE PROJECT AREA ARE AS FOLLOWS:

- AMEREN CIPS - ELECTRIC & GAS
- MCDONOUGH TELEPHONE COOP - TELEPHONE
- COMCAST - CABLE TELEVISION
- CITY OF COLCHESTER - WATER
- CITY OF COLCHESTER- SEWER

MEMBERS OF J.U.L.I.E. (800-892-0123) ARE INDICATED BY AN *. NON-J.U.L.I.E. MEMBERS MUST BE NOTIFIED INDIVIDUALLY.

UNDERGROUND FACILITIES, STRUCTURES AND UTILITIES HAVE BEEN PLOTTED FROM AVAILABLE INFORMATION FURNISHED BY THE UTILITY OWNERS AND MUST BE CONSIDERED APPROXIMATE. IT IS POSSIBLE THERE MAY BE OTHERS, THE EXISTENCE OF WHICH IS NOT PRESENTLY KNOWN OR SHOWN. IT IS THE CONTRACTOR'S RESPONSIBILITY TO DETERMINE THEIR EXISTENCE AND EXACT LOCATION AND TO AVOID DAMAGE THERETO.

COMMITMENTS

COMMITMENTS FOR THIS PROJECT ARE AS FOLLOWS:

NONE

MIXTURE REQUIREMENTS

SECTION	19-001038-00-SW
COUNTY	McDONOUGH
CONTRACT	89772

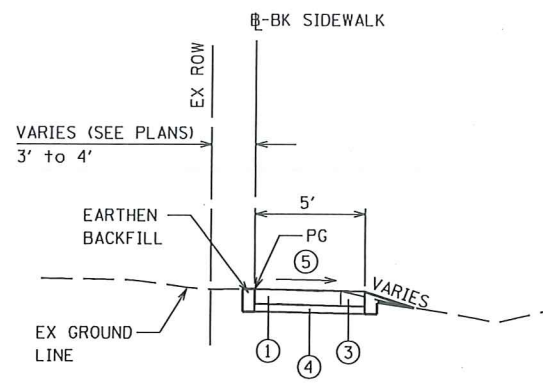
MIXTURE USE:	INCIDENTAL
AC/PG	PG 64-22
RAP% (MAX)	SEE SPEC. PROVISION
DESIGN AIR VOIDS	4.0% @ Ndes = 70
MIX COMPOSITION (GRADATION)	IL 9.5
FRICTION AGG	MIXTURE "C"
QUALITY MGMT PROGRAM	QC/QA

FILE NAME =	USER NAME = \$USER\$	DESIGNED -	REVISED -	STATE OF ILLINOIS DEPARTMENT OF TRANSPORTATION	GENERAL NOTES			F.A. RTE.	SECTION	COUNTY	TOTAL SHEETS	SHEET NO.
\$FILEL\$		DRAWN - M. McEVERS	REVISED -						19-00103-00-SW	McDONOUGH	15	2
\$MODELNAME\$		CHECKED - W. SLEEMAN	REVISED -		SCALE: SHEET 1 OF 1 SHEETS STA. TO STA.			CONTRACT NO. 89772				
		DATE - 01/2020	REVISED -		ILLINOIS FED. AID PROJECT							

CODE NO.	ITEM	UNIT	TOTAL QUANTITY	CONSTRUCTION CODE						
				0021						
				SAFE ROUTES TO SCHOOL 100% FED						
20200100	EARTH EXCAVATION	CU YD	153	153						
25000100	SEEDING, CLASS 1	ACRE	0.25	0.25						
25000400	NITROGEN FERTILIZER NUTRIENT	POUND	23	23						
25000500	PHOSPHOROUS FERTILIZER NUTRIENT	POUND	23	23						
25000600	POTASSIUM FERTILIZER NUTRIENT	POUND	23	23						
25100115	MULCH, METHOD 2	ACRE	0.25	0.25						
28000500	INLET AND PIPE PROTECTION	EACH	1	1						
40200800	AGGREGATE SURFACE COURSE, TYPE B	TON	32	32						
40800050	INCIDENTAL HOT-MIX ASPHALT SURFACING	TON	15	15						
(S) 42400100	PORTLAND CEMENT CONCRETE SIDEWALK 4 INCH	SQ FT	11649	11649						
(S) 42400300	PORTLAND CEMENT CONCRETE SIDEWALK 6 INCH	SQ FT	714	714						
42400800	DETECTABLE WARNINGS	SQ FT	210	210						
44000600	SIDEWALK REMOVAL	SQ FT	8966	8966						
54D2013	PIPE CULVERTS, CLASS D, TYPE 1 8"	FT	20	20						

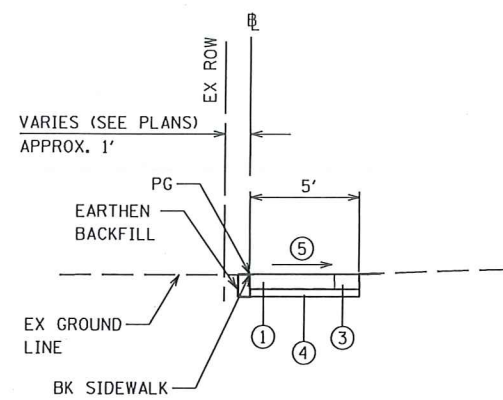
(S) SEE SPECIAL PROVISIONS

FILE NAME *	USER NAME = *USER*	DESIGNED -	REVISED -	STATE OF ILLINOIS DEPARTMENT OF TRANSPORTATION	SUMMARY OF QUANTITIES				F.A. RTE.	SECTION	COUNTY	TOTAL SHEETS	SHEET NO.
FILEL		DRAWN - S. BALLINGER	REVISED -							19-00103-00-SW	McDONOUGH	15	3
MODELNAME	PLOT SCALE = *SCALE*	CHECKED - W. SLEEMAN	REVISED -		SCALE:	SHEET 1	OF 2 SHEETS	STA.	TO STA.	ILLINOIS FED. AID PROJECT			
	PLOT DATE = *DATE*	DATE - 01/2020	REVISED -										



TYPICAL SIDEWALK SECTION
SOUTH HUN STREET

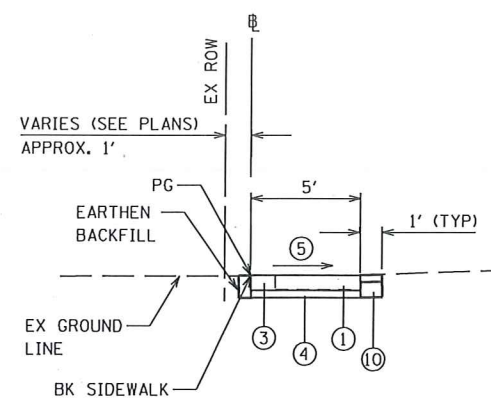
STA. 10+10.00 TO STA. 13+42.40



TYPICAL SIDEWALK SECTION

W. ROBERTS ST. & S. COAL ST.

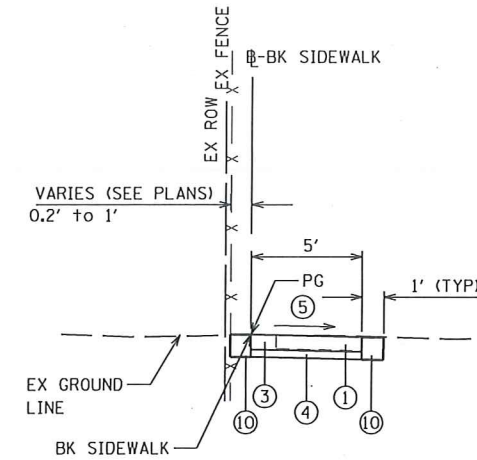
W. ROBERTS: STA. 20+10.00 TO STA. 20+40.40
W. ROBERTS: STA. 22+62.50 TO STA. 22+83.24
S. COAL: STA. 30+00 TO STA. 30+16.80
S. COAL: STA. 35+98.39 TO STA. 36+54.00
(EXCEPT TRANSITIONS)



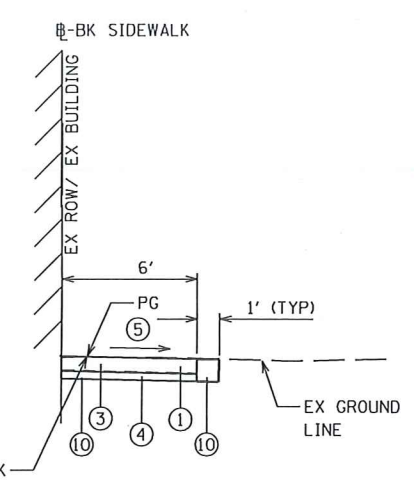
TYPICAL SIDEWALK SECTION

W. ROBERTS ST. & S. COAL ST.

W. ROBERTS: STA. 20+40.40 TO STA. 22+62.50
W. ROBERTS: STA. 22+83.24 TO STA. 22+90.90
S. COAL: STA. 30+16.80 TO STA. 30+93.00
S. COAL: STA. 34+06.90 TO STA. 35+63.21
S. COAL: STA. 36+54.00 TO STA. 38+03.40
(EXCEPT TRANSITIONS)



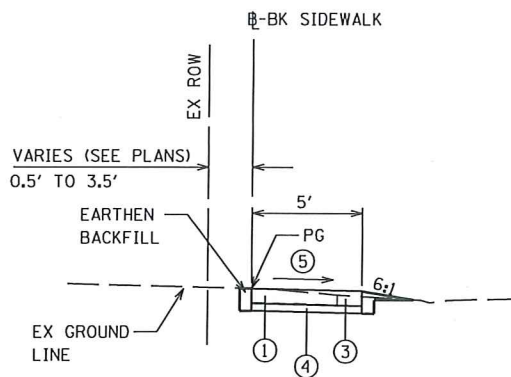
TYPICAL SIDEWALK SECTION



TYPICAL SIDEWALK SECTION

S. COAL ST.

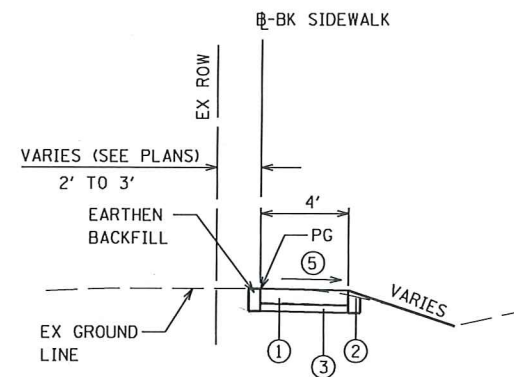
STA. 38+03.40 TO STA. 38+61.62
(EXCEPT TRANSITIONS)



TYPICAL SIDEWALK SECTION

EAST ROBERTS STREET

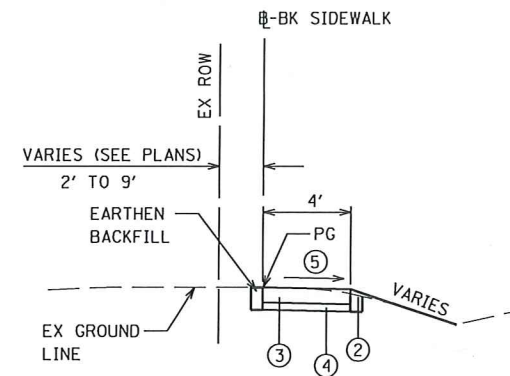
STA. 40+03.73 TO STA. 40+50.01
STA. 40+89.13 TO STA. 42+89.41
STA. 45+20.10 TO STA. 45+99.20
STA. 46+22.34 TO STA. 49+15.10
STA. 50+79.50 TO STA. 52+32.10
(EXCEPT TRANSITIONS)



TYPICAL SIDEWALK SECTION

EAST ROBERTS STREET

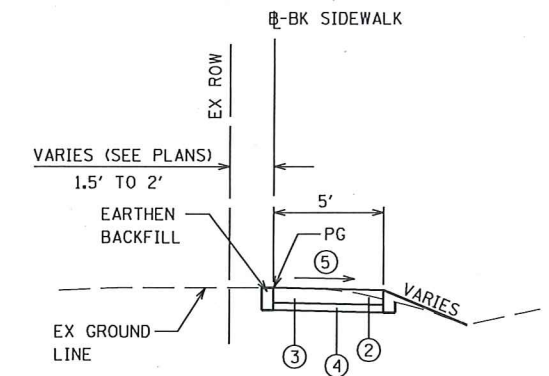
STA. 43+14.89 TO STA. 45+20.10
(EXCEPT TRANSITIONS)



TYPICAL SIDEWALK SECTION

EAST ROBERTS STREET

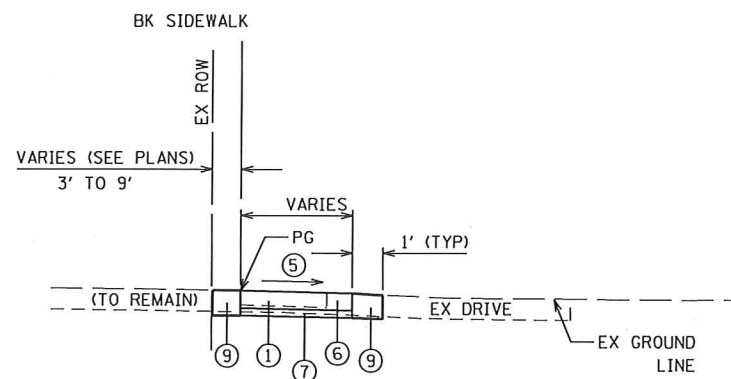
STA. 49+33.90 TO STA. 50+79.50
(EXCEPT TRANSITIONS)



TYPICAL SIDEWALK SECTION

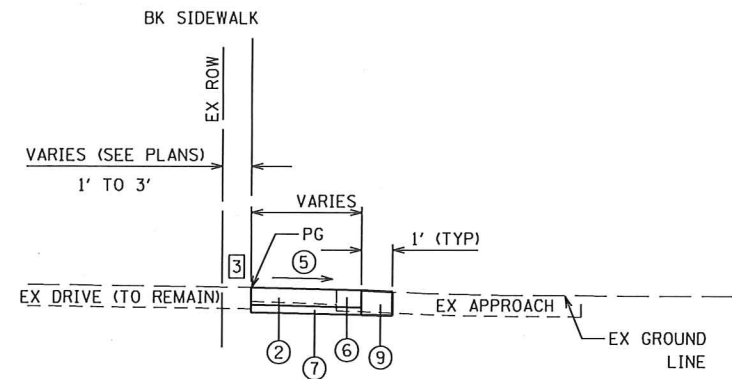
EAST ROBERTS STREET

STA. 50+79.50 TO STA. 52+32.10
STA. 52+54.50 TO STA. 52+59.50
(EXCEPT TRANSITIONS)



TYPICAL SIDEWALK SECTION - ACROSS AGGREGATE ENTRANCES

(EXCEPT TRANSITIONS)



TYPICAL SIDEWALK SECTION - ACROSS CONCRETE ENTRANCES

WITH AGGREGATE APPROACH

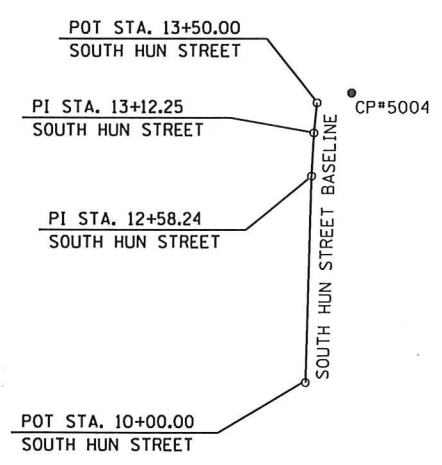
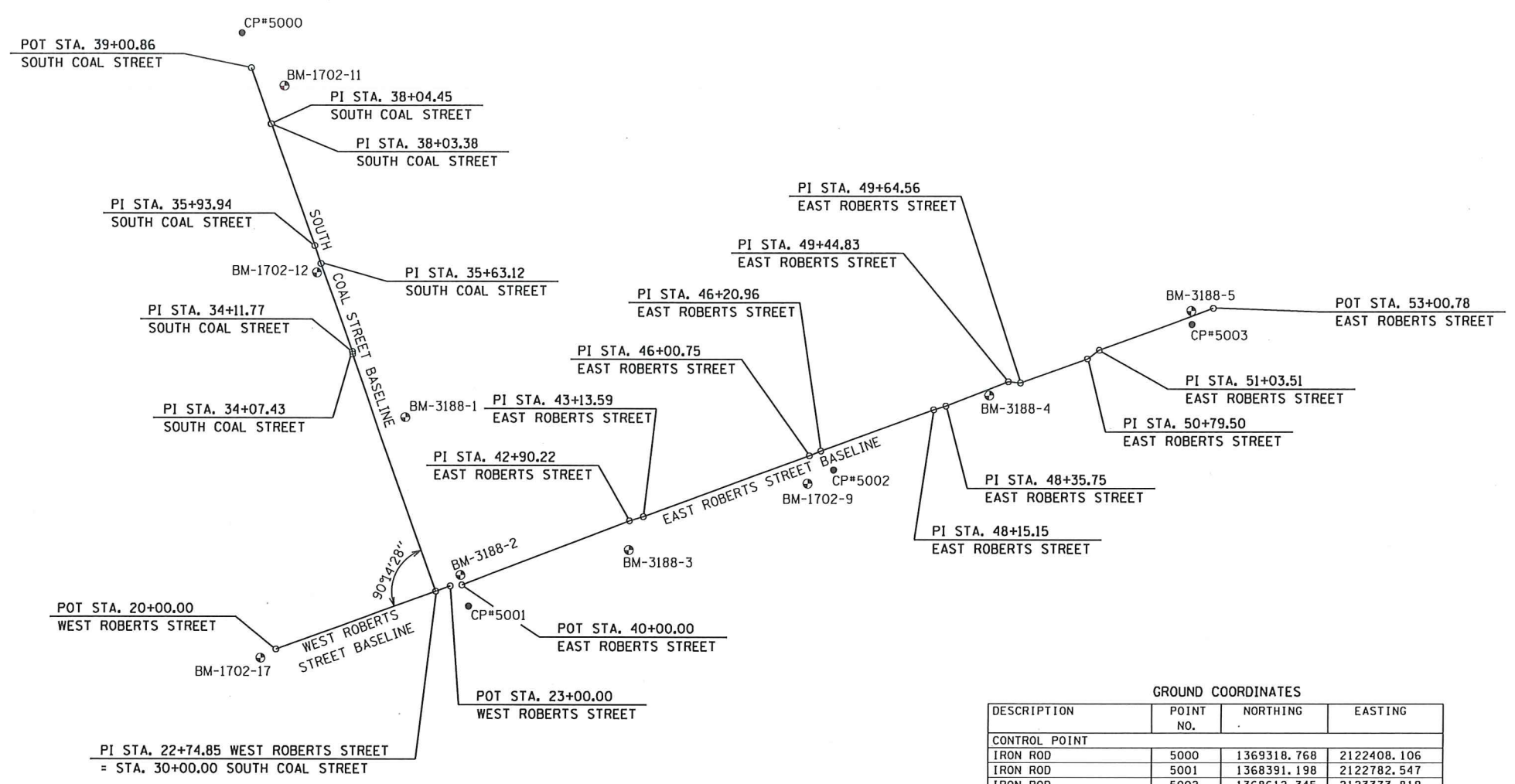
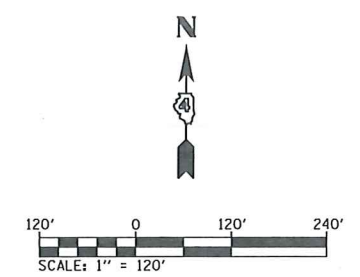
(EXCEPT TRANSITIONS)

NOTE:

[3] SAW CUT EXISTING OIL AND CHIP SURFACE AND CONCRETE APPROACHES ONLY. COST OF SAWING SHALL BE INCLUDED IN COST OF DRIVEWAY PAVEMENT REMOVAL.

- ① EXISTING CONCRETE SIDEWALK (TO BE REMOVED UNLESS NOTED OTHERWISE)
- ② EXISTING DRIVEWAY PAVEMENT (TO BE REMOVED UNLESS NOTED OTHERWISE)
- ③ PROPOSED PORTLAND CEMENT CONCRETE SIDEWALK 4 INCH
- ④ PROPOSED FINE AGGREGATE SUBBASE FA-1, 2" (COST TO BE INCLUDED IN PCC SIDEWALK)
- ⑤ CROSS SLOPE SHALL BE 1.5% NOMINAL (2% MAX) UNLESS OTHERWISE SHOWN
- ⑥ PROPOSED PORTLAND CEMENT CONCRETE SIDEWALK 6 INCH
- ⑦ PROPOSED COARSE AGGREGATE SUBBASE CA-6, 2" (COST TO BE INCLUDED IN PCC SIDEWALK AND DRIVEWAY PAVEMENT)
- ⑧ PROPOSED PORTLAND CEMENT CONCRETE DRIVEWAY PAVEMENT, 6 INCH
- ⑨ PROPOSED AGGREGATE SURFACE COURSE CA-6, TYPE B, 8"
- ⑩ PROPOSED AGGREGATE SURFACE COURSE CA-6, TYPE B, 4", W/INCIDENTAL HMA SURFACING
- ⑪ PROPOSED PORTLAND CEMENT CONCRETE PAVEMENT, 8 INCH

FILE NAME =	USER NAME = #USER#	DESIGNED - S. Fenimore	REVISED -	STATE OF ILLINOIS DEPARTMENT OF TRANSPORTATION	TYPICAL SECTIONS			F.A. RTE.	SECTION	COUNTY	TOTAL SHEETS	SHEET NO.
#FILE#	PLOT SCALE = #SCALE#	DRAWN - M. McEVERS	REVISED -					19-00103-00-SW	McDONOUGH	15	5	
#MODELNAME#	PLOT DATE = #DATE#	CHECKED - W. SLEEMAN	REVISED -		CONTRACT NO. 89772							
		DATE - 12/2019	REVISED -		SCALE:	SHEET 1	OF 1	SHEETS	STA.	TO STA.	ILLINOIS FED. AID PROJECT	

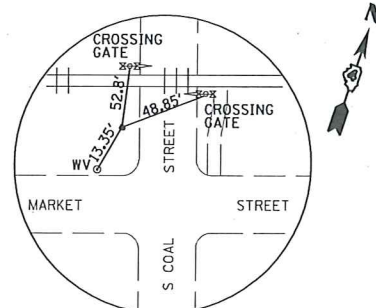


GROUND COORDINATES			
DESCRIPTION	POINT NO.	NORTHING	EASTING
CONTROL POINT			
IRON ROD	5000	1369318.768	2122408.106
IRON ROD	5001	1368391.198	2122782.547
IRON ROD	5002	1368612.345	2123373.819
IRON ROD	5003	1368848.148	2123954.575
IRON ROD	5004	1367657.830	2122835.941
SOUTH HUN STREET			
POT STA. 10+00.00		1367295.940	2122778.815
PI STA. 12+58.24		1367554.095	2122785.535
PI STA. 13+12.25		1367608.040	2122788.215
POT STA. 13+50.00		1367645.672	2122791.985
WEST ROBERTS STREET			
POT STA. 20+00.00		1368321.669	2122470.456
POT STA. 23+00.00		1368424.193	2122752.399
SOUTH COAL STREET			
POT STA. 30+00.00		1368415.597	2122728.760
PI STA. 34+07.43		1368799.085	2122591.136
PI STA. 34+11.77		1368803.386	2122590.608
PI STA. 35+63.21		1368945.645	2122538.664
PI STA. 35+93.94		1368974.644	2122528.496
PI STA. 38+03.38		1369171.520	2122457.045
PI STA. 38+04.45		1369171.547	2122455.984
PI STA. 38+67.52		1369230.961	2122434.814
POT STA. 39+00.86		1369262.365	2122423.624
EAST ROBERTS STREET			
POT STA. 40+00.00		1368425.614	2122771.246
PI STA. 42+90.22		1368529.967	2123042.169
PI STA. 43+13.59		1368536.584	2123064.586
PI STA. 46+00.75		1368635.362	2123334.220
PI STA. 46+20.96		1368643.215	2123352.848
PI STA. 48+15.15		1368709.960	2123535.201
PI STA. 48+35.75		1368715.979	2123554.901
PI STA. 49+44.83		1368755.417	2123656.606
PI STA. 49+64.56		1368753.620	2123676.254
PI STA. 50+79.50		1368792.463	2123784.434
PI STA. 51+03.51		1368806.525	2123803.893
POT STA. 53+00.78		1368874.450	2123989.096

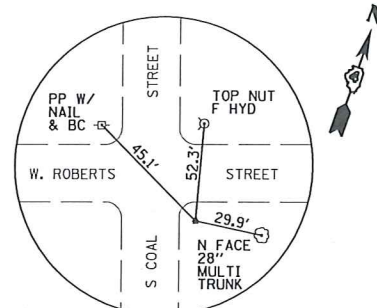
- BM-2721-2
"O" IN OPEN, TOP FLANGE OF F. HYDRANT, N. SIDE S. ENT TO COLCHESTER MIDDLE SCHOOL, E. SIDE HUNN STREET ELEVATION 689.52
- BM-1702-9
"O" IN OPEN, TOP FLANGE OF F. HYDRANT, S.W. COR. OF S. MAIN STREET AND E. ROBERTS STREET ELEVATION 693.76
- BM-1702-11
"M" IN MUELLER, TOP FLANGE OF F. HYDRANT, S.E. COR. OF MARKET STREET AND S. COAL STREET ELEVATION 697.13
- BM-1702-12
"O" IN OPEN, TOP FLANGE OF F. HYDRANT, S.W. COR. OF SOUTH STREET AND S. COAL STREET ELEVATION 694.44
- BM-1702-17
"O" IN OPEN, TOP FLANGE OF F. HYDRANT, N.W. COR. OF S. ELIZABETH STREET AND W. ROBERTS STREET ELEVATION 691.82
- BM-3188-1
"M" IN MUELLER, TOP FLANGE OF F. HYDRANT, E. SIDE S. COAL STREET, HALFWAY BETWEEN SOUTH STREET AND ROBERTS STREET ELEVATION 693.18
- BM-3188-2
"M" IN MUELLER, TOP FLANGE OF F. HYDRANT, N.E. COR. S. COAL STREET AND ROBERTS STREET ELEVATION 692.26
- BM-3188-3
"O" IN OPEN, TOP FLANGE OF F. HYDRANT, S.W. COR. OF S. FULTON STREET AND E. ROBERTS STREET ELEVATION 692.02
- BM-3188-4
YELLOW BM SPIKE IN S. SIDE POWER POLE W/ LIGHT, N.W. COR. OF S. EAST STREET AND E. ROBERTS STREET ELEVATION 693.26
- BM-3188-5
"O" IN OPEN, TOP FLANGE OF F. HYDRANT, N.E. COR. OF S. WASHINGTON STREET AND E. ROBERTS STREET ELEVATION 694.77

BM-2721-2

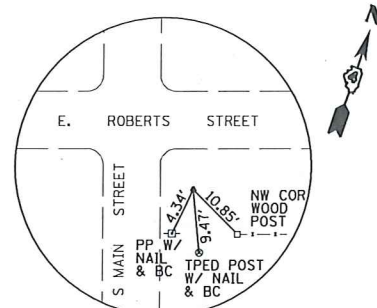
FILE NAME =	USER NAME = #USER#	DESIGNED -	REVISED -	STATE OF ILLINOIS DEPARTMENT OF TRANSPORTATION	ALIGNMENTS & BENCHMARK			F.A. RTE.	SECTION	COUNTY	TOTAL SHEETS	SHEET NO.	
#FILE#		DRAWN - M. McEVERS	REVISED -						19-00103-00-SW	McDONOUGH	15	6	
#MODELNAME#		CHECKED - W. SLEEMAN	REVISED -										
		DATE - 01/2020	REVISED -					SCALE:	SHEET 1 OF 2 SHEETS	STA.	TO STA.		CONTRACT NO. 89772



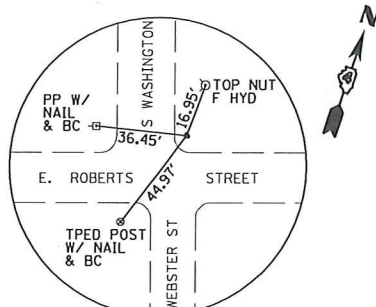
CONTROL POINT #5000
SET 5/8" IRON ROD



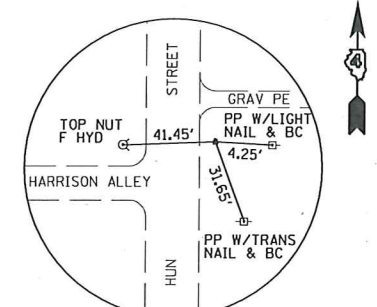
CONTROL POINT #5001
SET 5/8" IRON ROD



CONTROL POINT #5002
SET 5/8" IRON ROD



CONTROL POINT #5003
SET 5/8" IRON ROD



CONTROL POINT #5004
SET 5/8" IRON ROD

FILE NAME =	USER NAME = #USER#	DESIGNED -	REVISED -
#FILEL#		DRAWN - M. McEVERS	REVISED -
	PLOT SCALE = #SCALE#	CHECKED - W. SLEEMAN	REVISED -
#MODELNAME#	PLOT DATE = #DATE#	DATE - 01/2020	REVISED -

STATE OF ILLINOIS
DEPARTMENT OF TRANSPORTATION

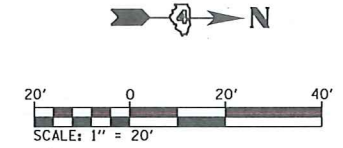
CONTROL TIES

SCALE: SHEET 2 OF 2 SHEETS STA. TO STA.

F.A. RTE.	SECTION	COUNTY	TOTAL SHEETS	SHEET NO.
	19-00103-00-SW	McDONOUGH	15	7
CONTRACT NO. 89772				
ILLINOIS FED. AID PROJECT				

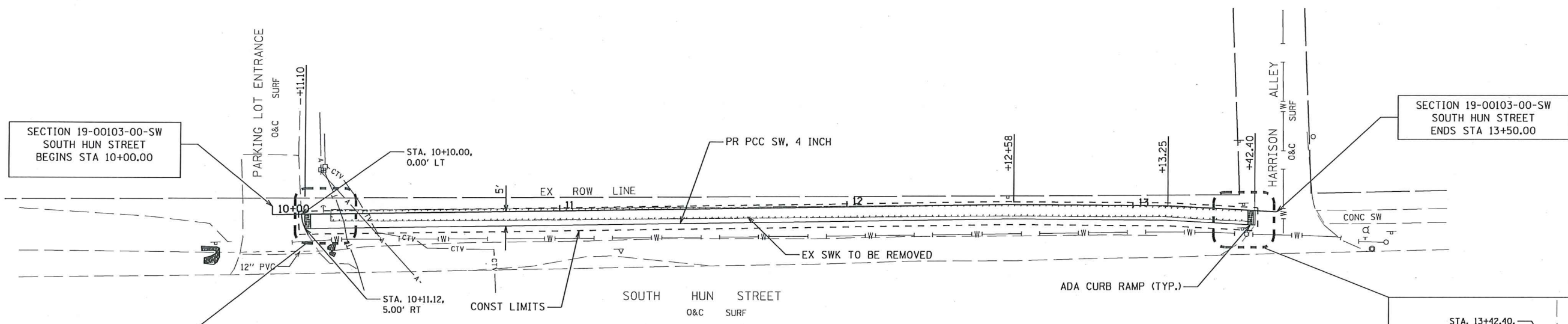
TOTALS THIS SHEET

- EARTH EXCAVATION - 20.4 CY
- SEEDING, CLASS 1 - 0.01 AC
- NITROGEN FERTILIZER NUTRIENT - 0.9 LB
- PHOSPHORUS FERTILIZER NUTRIENT - 0.9 LB
- POTASSIUM FERTILIZER NUTRIENT - 0.9 LB
- MULCH, METHOD 1 - 0.01 AC
- PC CONCRETE SIDEWALK 4 INCH - 1655.1 SF
- DETECTABLE WARNINGS - 20 SF
- SIDEWALK REMOVAL - 1266.4 SF



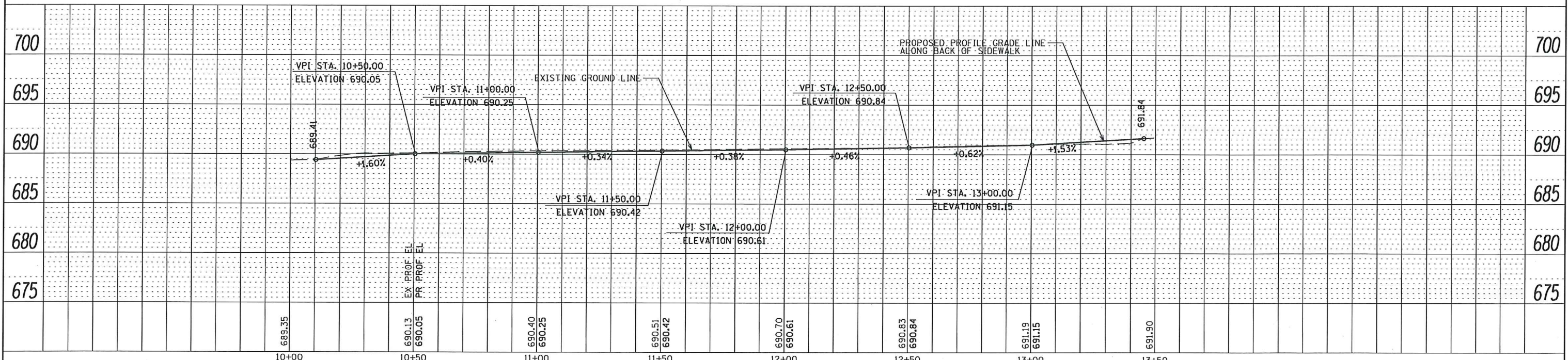
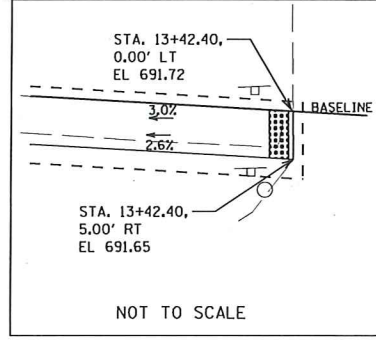
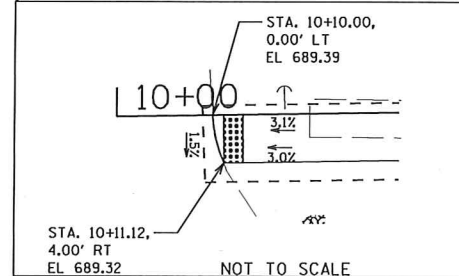
DATE	
BY	
PLAN	
NO. _____	
NOTE BOOK	
NO. _____	
SURVEYED	
BY _____	
DATE _____	
PLOTTED	
BY _____	
DATE _____	
CHECKED	
BY _____	
DATE _____	
FILE NAME	

DATE	
BY	
PROFILE	
NO. _____	
NOTE BOOK	
NO. _____	
SURVEYED	
BY _____	
DATE _____	
PLOTTED	
BY _____	
DATE _____	
CHECKED	
BY _____	
DATE _____	
STRUCTURE NOTATIONS CHKD	



SECTION 19-00103-00-SW
SOUTH HUN STREET
BEGINS STA 10+00.00

SECTION 19-00103-00-SW
SOUTH HUN STREET
ENDS STA 13+50.00



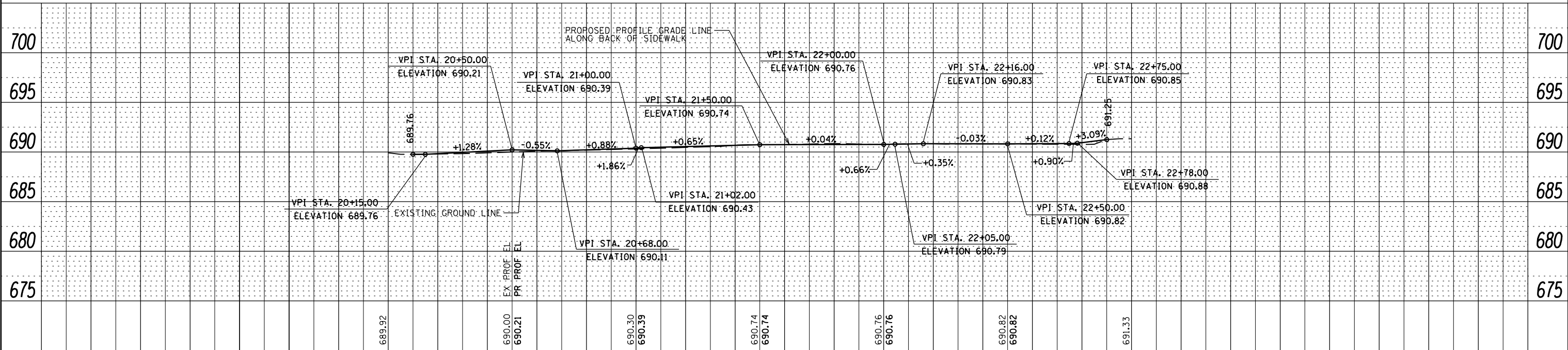
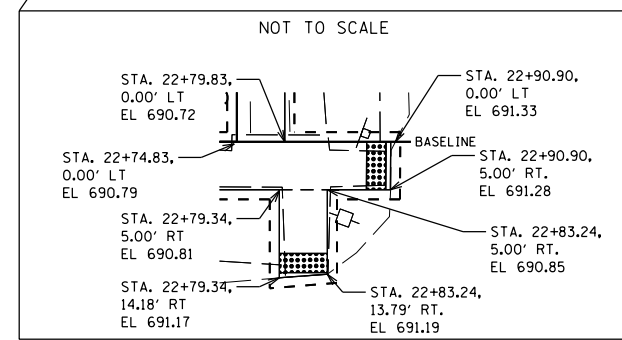
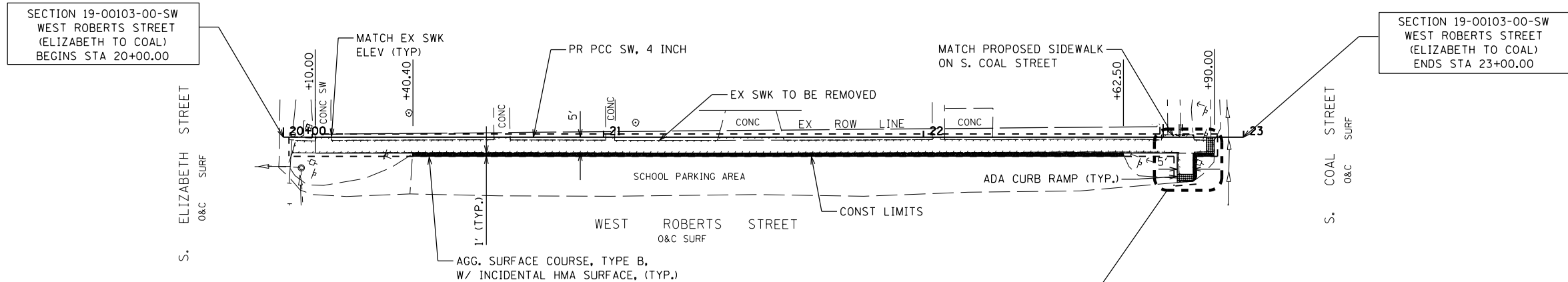
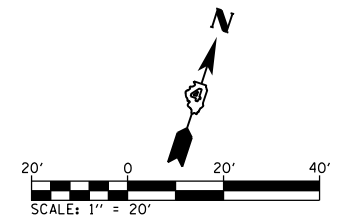
FILE NAME =	USER NAME = #USER#	DESIGNED - S. Ballinger	REVISED -	STATE OF ILLINOIS DEPARTMENT OF TRANSPORTATION	PLAN AND PROFILE SOUTH HUN STREET	F.A. RTE.	SECTION	COUNTY	TOTAL SHEETS	SHEET NO.	
#FILEL#		DRAWN - S. Ballinger	REVISED -			19-00103-00-SW	McDONOUGH	15	8		
		CHECKED - W. Sleeman	REVISED -			CONTRACT NO. 89772					
#MODELNAME#		DATE - 01/2020	REVISED -			ILLINOIS FED. AID PROJECT					
				SCALE:	SHEET 1 OF 1 SHEETS	STA. 10+00.00 TO STA. 13+50.00					

PLAN	SURVEYED	DATE
	PLOTTED	
	ALIGNED	
	CHECKED	
	FILED	
NO.	FILE NAME	

PROFILE	SURVEYED	DATE
	PLOTTED	
	GRADES CHECKED	
	STRUCTURE NOTATIONS OK'D	
NO.	NOTATIONS OK'D	

TOTALS THIS SHEET

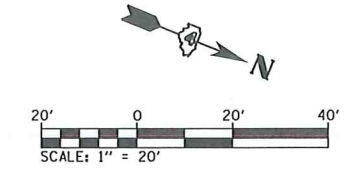
- EARTH EXCAVATION - 17.8 CY
- SEEDING, CLASS 1 - 0.01 AC
- NITROGEN FERTILIZER NUTRIENT - 0.9 LB
- PHOSPHORUS FERTILIZER NUTRIENT - 0.9 LB
- POTASSIUM FERTILIZER NUTRIENT - 0.9 LB
- MULCH, METHOD 1 - 0.01 AC
- AGGREGATE SURFACE COURSE, TYPE B - 6.0 TON
- INCIDENTAL HOT-MIX ASPHALT SURFACING - 2.1 TON
- PC CONCRETE SIDEWALK 4 INCH - 1441.5 SF
- DETECTABLE WARNINGS - 20 SF
- SIDEWALK REMOVAL - 1172.6 SF



FILE NAME =	USER NAME = #USER#	DESIGNED - S. Fenimore	REVISED -	STATE OF ILLINOIS DEPARTMENT OF TRANSPORTATION	PLAN AND PROFILE WEST ROBERTS STREET (ELIZABETH TO COAL)	F.A. RTE.	SECTION	COUNTY	TOTAL SHEETS	SHEET NO.	
*FILEL#		DRAWN - S. Fenimore	REVISED -				19-00103-00-SW	McDONOUGH	15	9	
*MODELNAME#		CHECKED - W. Sleeman	REVISED -			SCALE: SHEET 1 OF 1 SHEETS STA. 20+00.00 TO STA. 23+00.00					
		DATE - 12/2019	REVISED -			ILLINOIS FED. AID PROJECT					

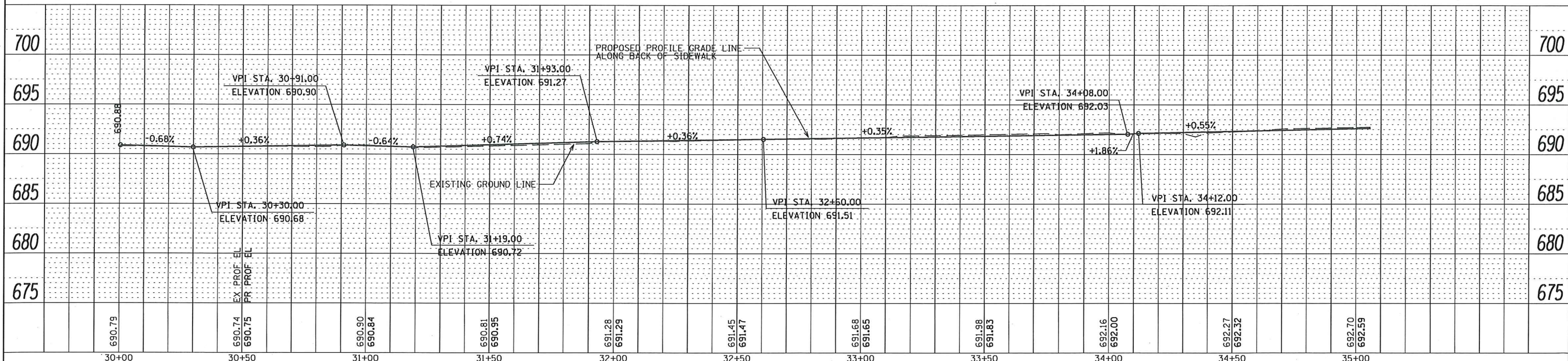
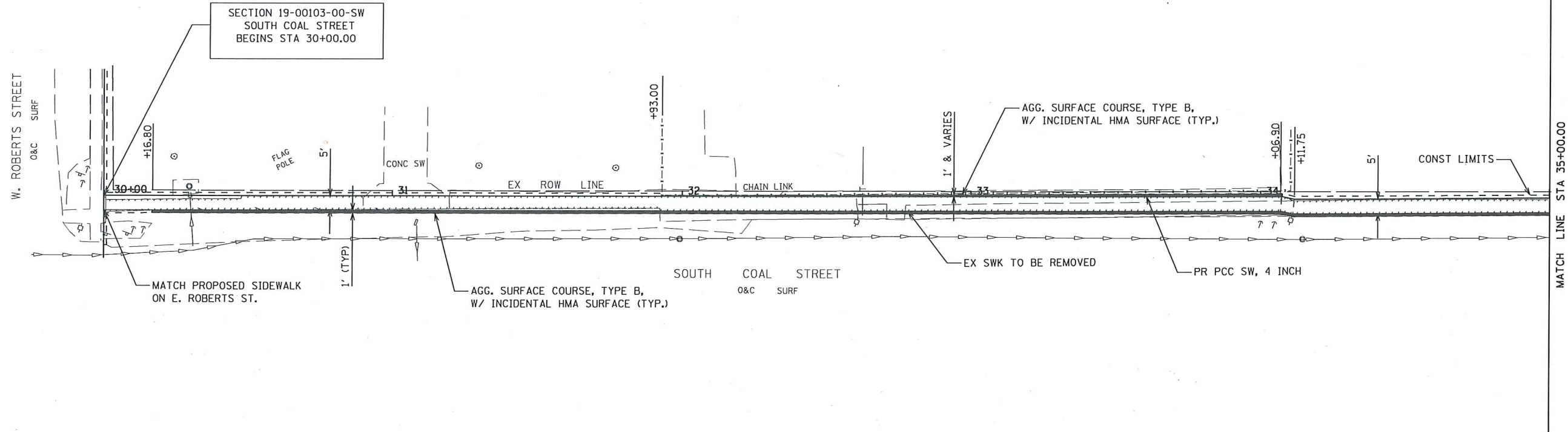
TOTALS THIS SHEET

- EARTH EXCAVATION - 30.9 CY
- SEEDING, CLASS 1 - 0.01 AC
- NITROGEN FERTILIZER NUTRIENT - 0.9 LB
- PHOSPHORUS FERTILIZER NUTRIENT - 0.9 LB
- POTASSIUM FERTILIZER NUTRIENT - 0.9 LB
- MULCH, METHOD 1 - 0.01 AC
- AGGREGATE SURFACE COURSE, TYPE B - 15.0 TON
- INCIDENTAL HOT-MIX ASPHALT SURFACING - 9.5 TON
- PC CONCRETE SIDEWALK 4 INCH - 2501.5 SF
- SIDEWALK REMOVAL - 2136.0 SF



PLAN	BY	DATE
REVISIONS		
NO.	DESCRIPTION	DATE

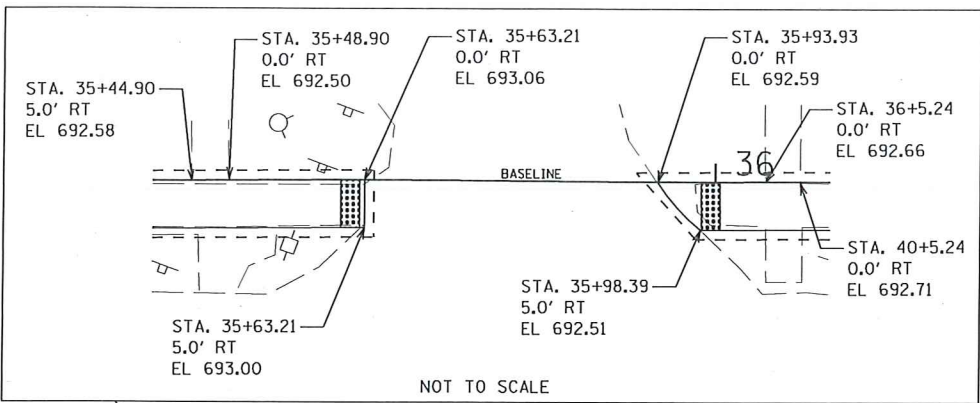
PROFILE	BY	DATE
REVISIONS		
NO.	DESCRIPTION	DATE



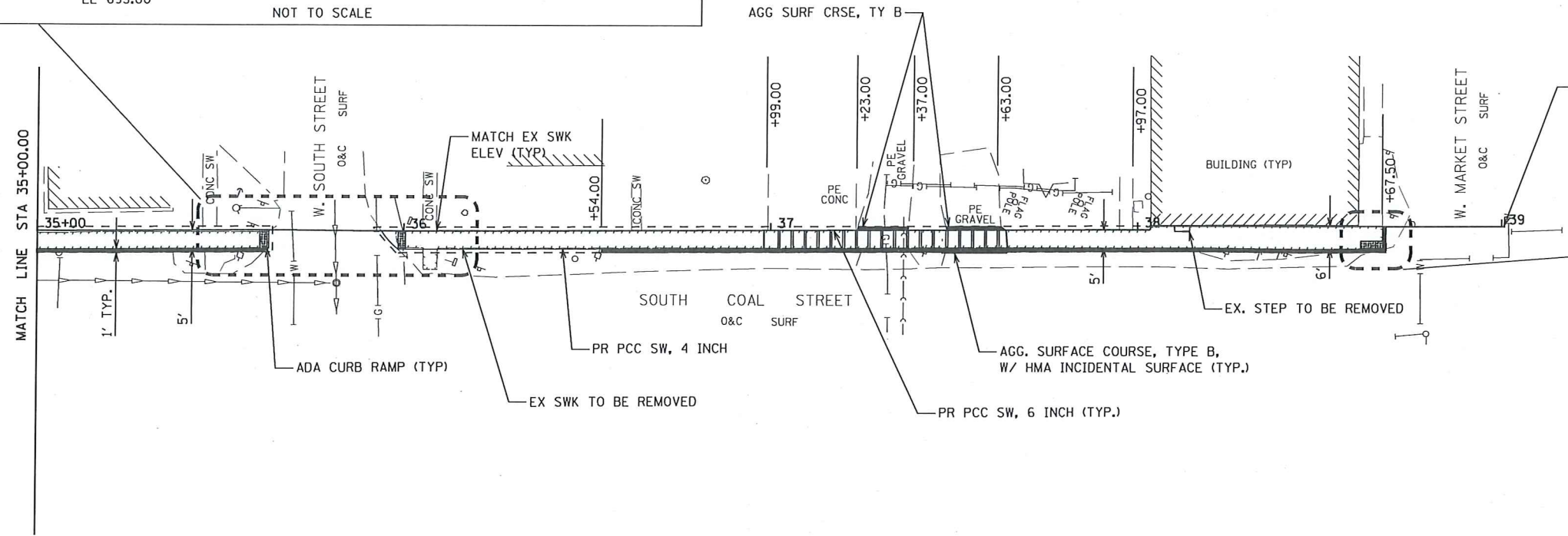
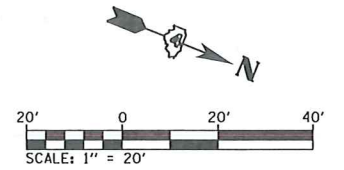
FILE NAME =	USER NAME = #USER#	DESIGNED - S. Bollinger	REVISED -	STATE OF ILLINOIS DEPARTMENT OF TRANSPORTATION	PLAN AND PROFILE			F.A. RTE.	SECTION	COUNTY	TOTAL SHEETS	SHEET NO.
#FILE#		DRAWN - S. Bollinger	REVISED -		SOUTH COAL STREET (W. ROBERTS ST. TO MARKET ST.)				19-00103-00-SW	McDONOUGH	15	10
		CHECKED - W. Sleeman	REVISED -		SCALE: SHEET 1 OF 2 SHEETS STA. 30+00.00 TO STA. 35+00.00						CONTRACT NO. 89772	
#MODELNAME#		DATE - 01/2020	REVISED -		ILLINOIS FED. AID PROJECT							

PLAN	SURVEYED	DATE
	ALIGNED	
	NOTED	
	BY	
	NO.	

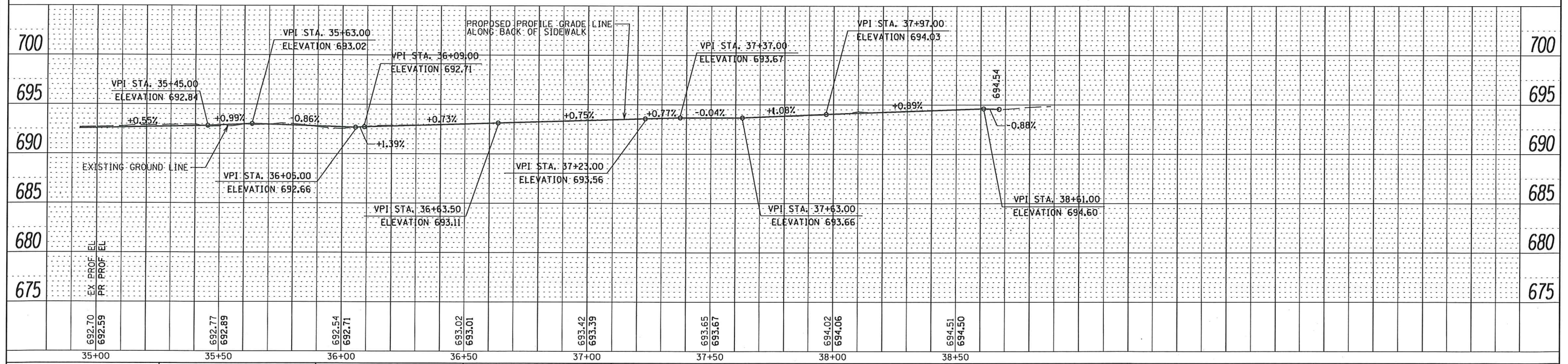
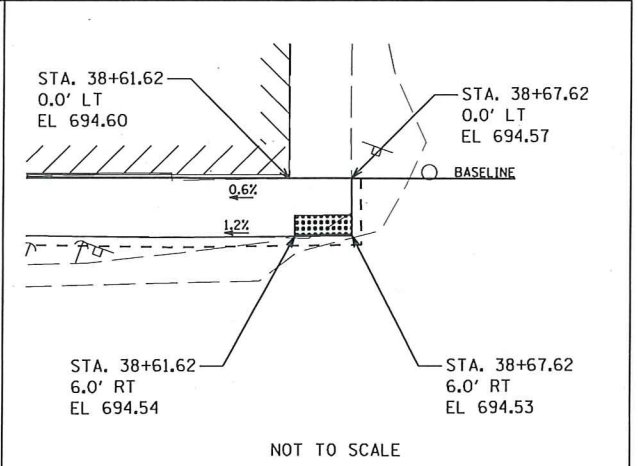
PROFILE	SURVEYED	DATE
	PLOTTED	
	GRADES CHECKED	
	STRUCTURE NOTATIONS OK'D	
	NO.	



- TOTALS THIS SHEET**
- EARTH EXCAVATION - 20.9 CY
 - SEEDING, CLASS 1 - 0.01 AC
 - NITROGEN FERTILIZER NUTRIENT - 0.9 LB
 - PHOSPHORUS FERTILIZER NUTRIENT - 0.9 LB
 - POTASSIUM FERTILIZER NUTRIENT - 0.9 LB
 - MULCH, METHOD 1 - 0.01 AC
 - AGGREGATE SURFACE COURSE, TYPE B - 5.5 TON
 - HMA INCIDENTAL SURFACING - 3.4 TON
 - PC CONCRETE SIDEWALK 4 INCH - 1368.1 SF
 - PC CONCRETE SIDEWALK 6 INCH - 330.9 SF
 - DETECTABLE WARNINGS - 32 SF
 - SIDEWALK REMOVAL - 1635.2 SF



SECTION 19-00103-00-SW
SOUTH COAL STREET
ENDS STA 39+00.00



FILE NAME =	USER NAME = *USER*	DESIGNED - S. Fenimore	REVISED -
#FILE#		DRAWN - S. Fenimore	REVISED -
#MODELNAME#	PLOT SCALE = *SCALE#	CHECKED - W. Sleeman	REVISED -
	PLOT DATE = *DATE#	DATE - 12/2019	REVISED -

STATE OF ILLINOIS
DEPARTMENT OF TRANSPORTATION

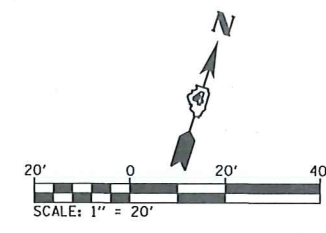
PLAN AND PROFILE
SOUTH COAL STREET (W. ROBERTS ST. TO MARKET ST.)

SCALE: SHEET 2 OF 2 SHEETS STA. 35+00.00 TO STA. 39+00.00

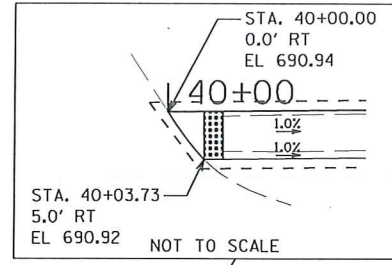
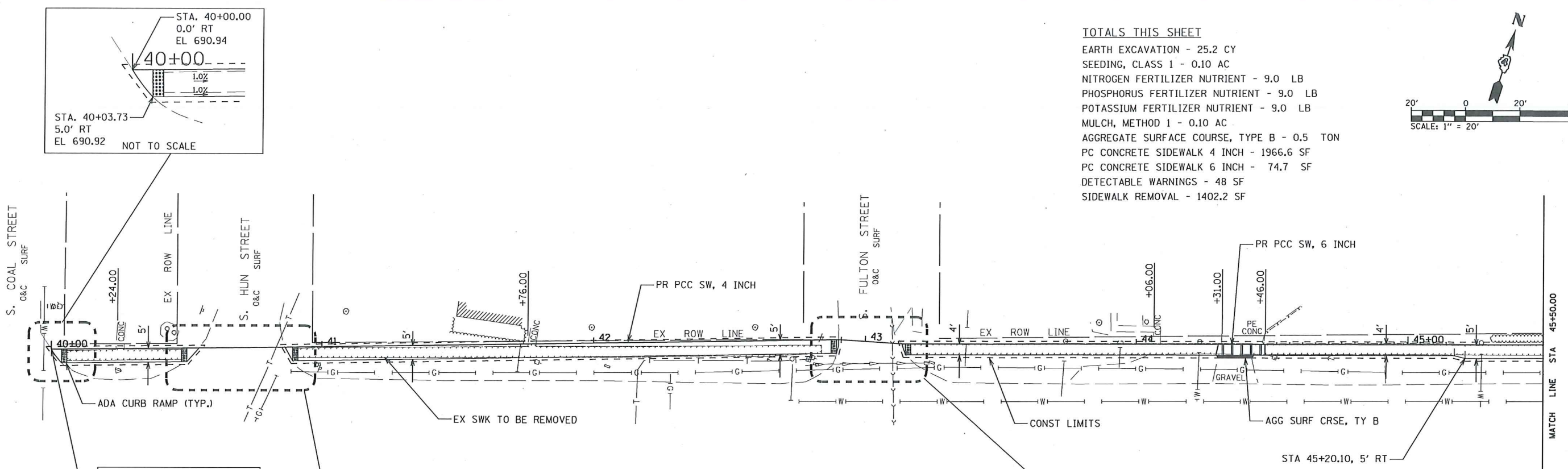
F.A. RTE.	SECTION	COUNTY	TOTAL SHEETS	SHEET NO.
	19-00103-00-SW	McDONOUGH	15	11
CONTRACT NO. 89772				
ILLINOIS FED. AID PROJECT				

PLAN	SURVEYED	BY	DATE
	PLOTTED		
	CHECKED		
	RT. OF WAY CHECKED		
	CADD FILE NAME		
	NO.		

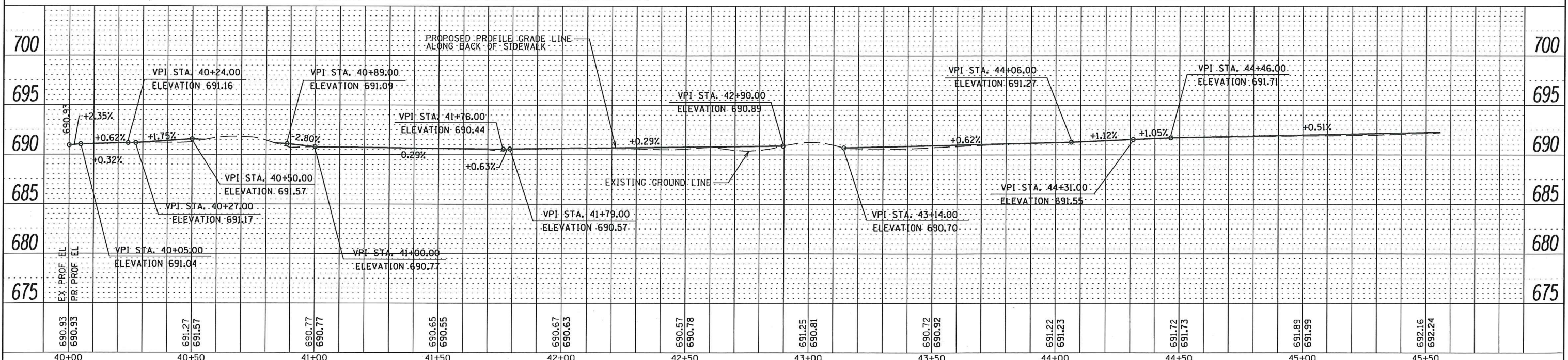
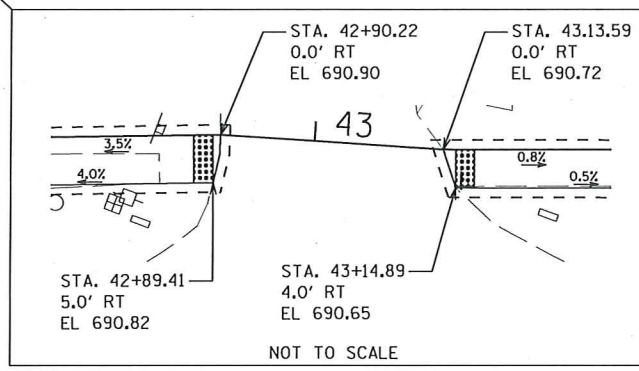
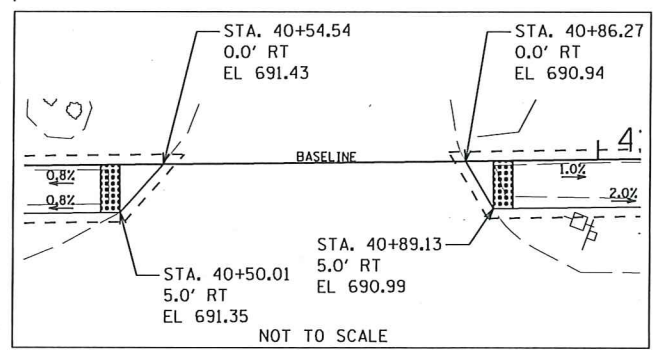
PROFILE	SURVEYED	BY	DATE
	GRADES CHECKED		
	BLM. NOTED		
	STRUCTURE NOTATIONS CHRD		
	NO.		



- TOTALS THIS SHEET**
- EARTH EXCAVATION - 25.2 CY
 - SEEDING, CLASS 1 - 0.10 AC
 - NITROGEN FERTILIZER NUTRIENT - 9.0 LB
 - PHOSPHORUS FERTILIZER NUTRIENT - 9.0 LB
 - POTASSIUM FERTILIZER NUTRIENT - 9.0 LB
 - MULCH, METHOD 1 - 0.10 AC
 - AGGREGATE SURFACE COURSE, TYPE B - 0.5 TON
 - PC CONCRETE SIDEWALK 4 INCH - 1966.6 SF
 - PC CONCRETE SIDEWALK 6 INCH - 74.7 SF
 - DETECTABLE WARNINGS - 48 SF
 - SIDEWALK REMOVAL - 1402.2 SF



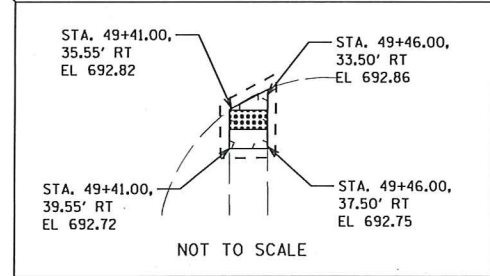
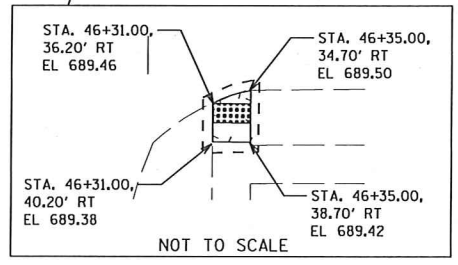
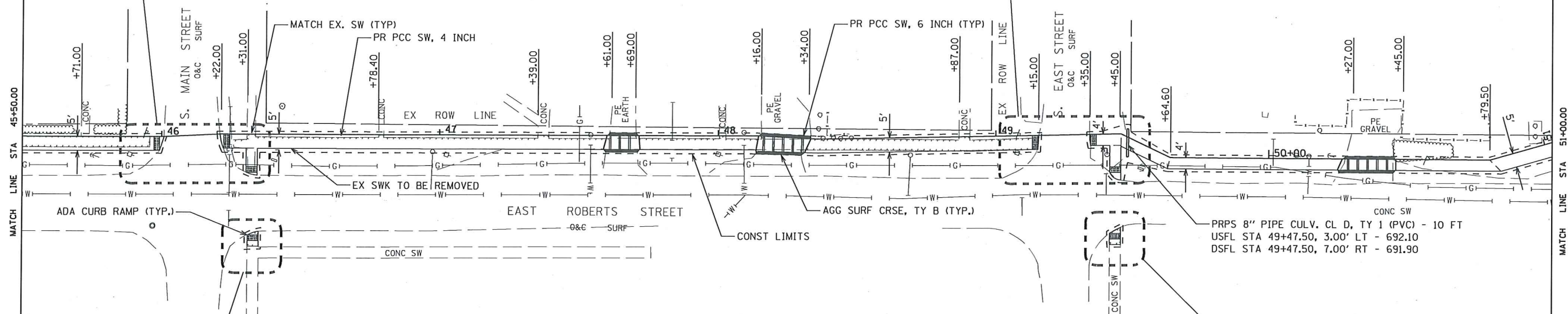
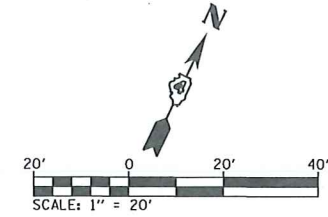
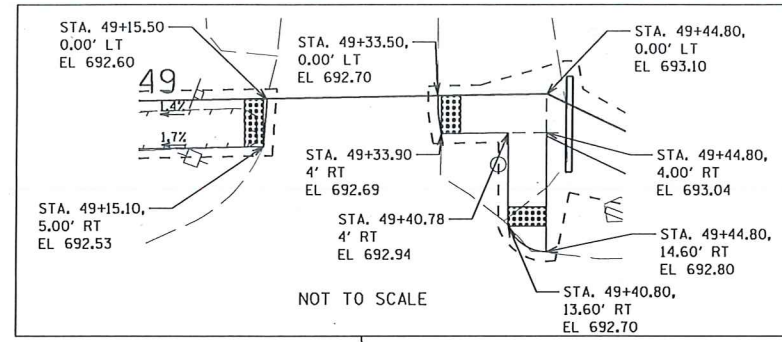
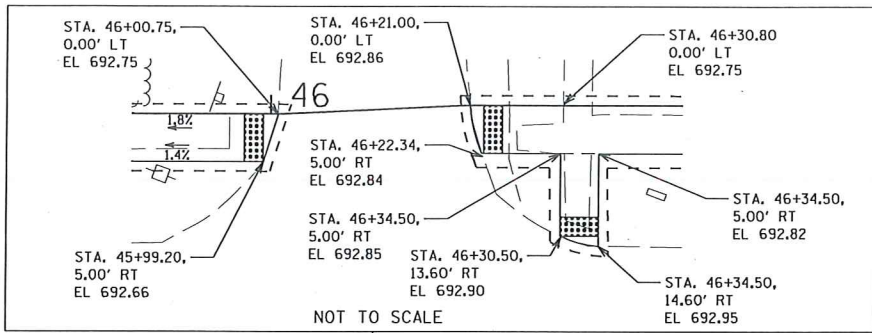
SECTION 19-00103-00-SW
EAST ROBERTS STREET
(COAL TO WASHINGTON)
BEGINS STA 40+00.00



FILE NAME =	USER NAME = #USER#	DESIGNED - S. Fenimore	REVISED -	STATE OF ILLINOIS DEPARTMENT OF TRANSPORTATION	PLAN AND PROFILE		F.A. RTE.	SECTION	COUNTY	TOTAL SHEETS	SHEET NO.
#FILE#		DRAWN - S. Fenimore	REVISED -		E. ROBERTS STREET (S. COAL ST. TO WASHINGTON ST.)			19-00103-00-SW	McDONOUGH	15	12
		CHECKED - W. Sleemon	REVISED -		SCALE:	SHEET 1 OF 3 SHEETS	STA. 40+00.00 TO STA. 45+50.00				CONTRACT NO. 89772
#MODELNAME#		DATE - 12/2019	REVISED -		ILLINOIS FED. AID PROJECT						

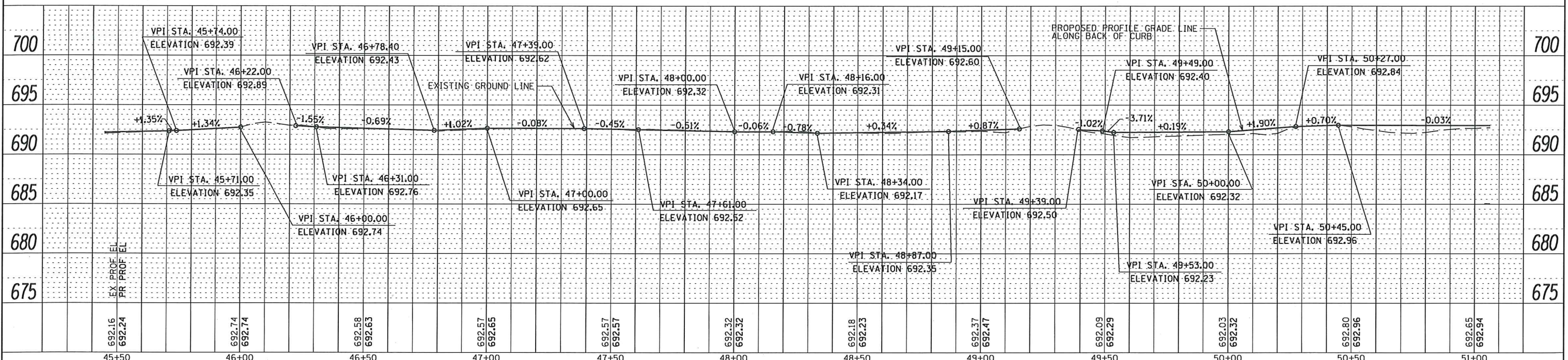
PLAN	SURVEYED	BY	DATE
	ALIGNED		
	CHECKED		
	PI. OF WAY		
	CHECKED		
	CADD FILE NAME		
	NO.		

PROFILE	SURVEYED	BY	DATE
	GRADES		
	CHECKED		
	BLM. NOTED		
	STRUCTURE		
	NOTATIONS		
	CHFD		
	NO.		

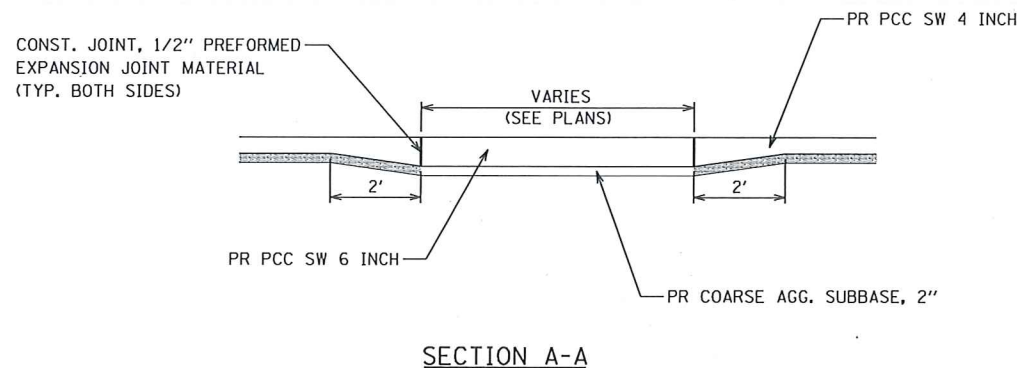
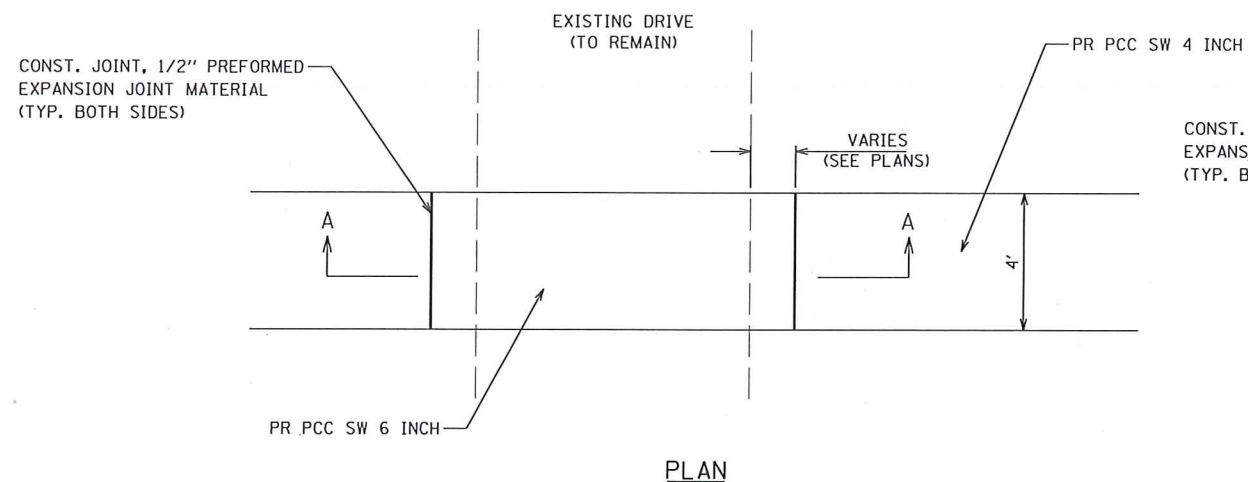


TOTALS THIS SHEET

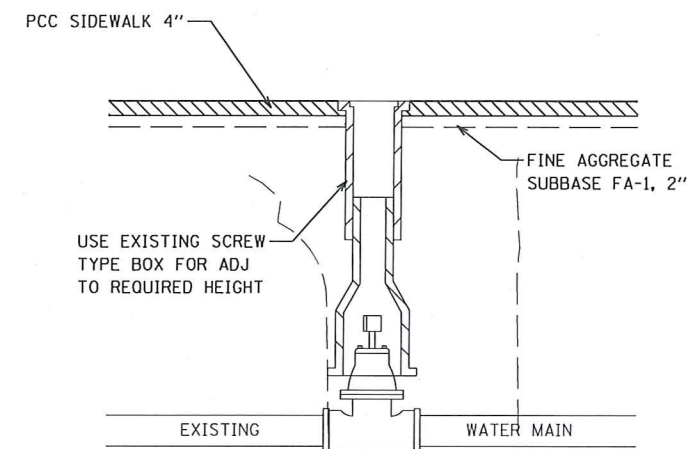
- EARTH EXCAVATION - 28.8 CY
- SEEDING, CLASS 1 - 0.10 AC
- NITROGEN FERTILIZER NUTRIENT - 9.0 LB
- PHOSPHORUS FERTILIZER NUTRIENT - 9.0 LB
- POTASSIUM FERTILIZER NUTRIENT - 9.0 LB
- MULCH, METHOD 1 - 0.10 AC
- INLET AND PIPE PROTECTION - 1 EACH
- AGGREGATE SURFACE COURSE, TYPE B - 3.1 TON
- PC CONCRETE SIDEWALK 4 INCH - 2075.6 SF
- PC CONCRETE SIDEWALK 6 INCH - 253.6 SF
- DETECTABLE WARNINGS - 70 SF
- SIDEWALK REMOVAL - 1353.9 SF
- PIPE CULVERTS, CLASS D, TYPE 1 8" - 10 FT



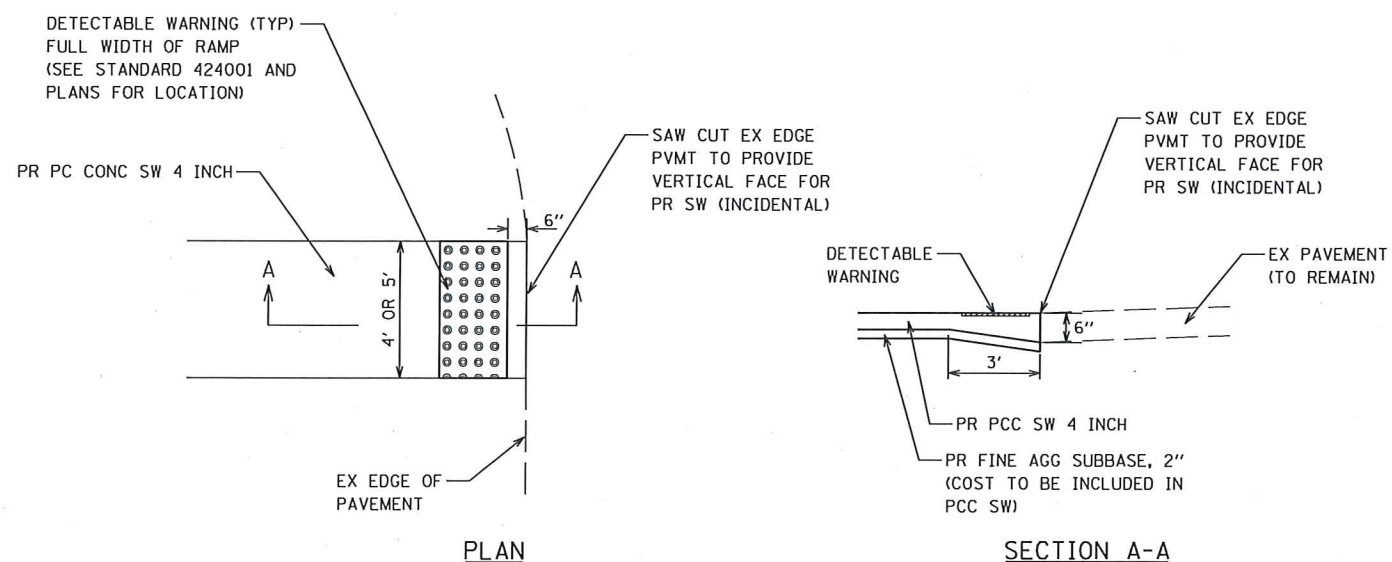
FILE NAME =	USER NAME = \$USER\$	DESIGNED - S. Fenimore	REVISED -	STATE OF ILLINOIS DEPARTMENT OF TRANSPORTATION	PLAN AND PROFILE E. ROBERTS STREET (S. COAL ST. TO WASHINGTON ST.)	F.A. RTE.	SECTION	COUNTY	TOTAL SHEETS	SHEET NO.	
#FILE#	PLOT SCALE = \$SCALE\$	CHECKED - W. Sleeman	REVISED -			19-00103-00-SW	McDONOUGH	15	13		
#MODELNAME#	PLOT DATE = \$DATE\$	DATE - 12/2019	REVISED -			CONTRACT NO. 89772		ILLINOIS FED. AID PROJECT			
						SCALE:	SHEET 2 OF 3 SHEETS	STA. 45+50.00 TO STA. 51+00.00			



PROPOSED PCC SIDEWALK TRANSITION DETAIL ACROSS DRIVES
NOT TO SCALE

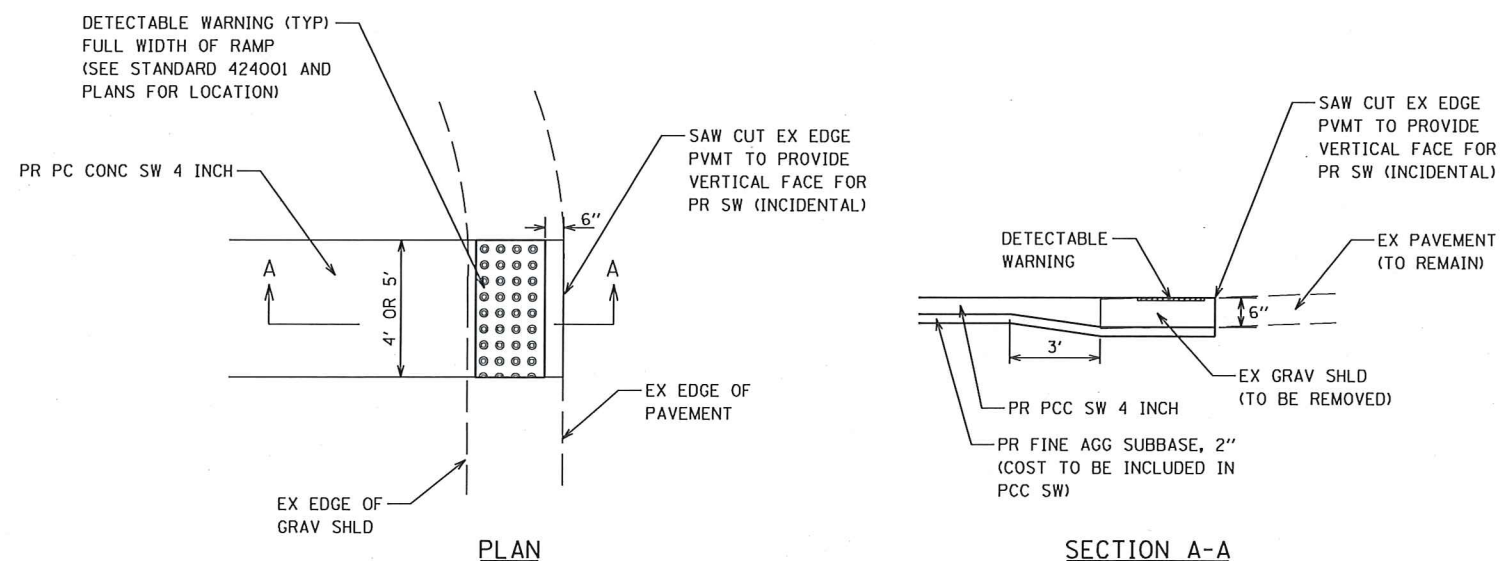


VALVE BOX FRAME TO BE ADJUSTED DETAIL
NOT TO SCALE



NOTE: COST OF ADDED THICKNESS FOR SWK AT EDGE OF EX PAVEMENT SHALL BE INCLUDED IN THE COST OF PORTLAND CEMENT CONCRETE SIDEWALK 4 INCH

DETAIL SIDEWALK END ABUTTING EXISTING PAVEMENT
NOT TO SCALE



NOTE: COST OF ADDED THICKNESS FOR SWK THRU EX GRAVEL SHOULDER AND AT EDGE OF EX PAVEMENT SHALL BE INCLUDED IN THE COST OF PORTLAND CEMENT CONCRETE SIDEWALK 4 INCH

DETAIL SIDEWALK END THRU EXISTING GRAVEL SHOULDER
NOT TO SCALE

FILE NAME =	USER NAME = \$USER\$	DESIGNED -	REVISED -	STATE OF ILLINOIS DEPARTMENT OF TRANSPORTATION	CONSTRUCTION DETAILS		F.A. RTE.	SECTION	COUNTY	TOTAL SHEETS	SHEET NO.
\$FILEL\$		DRAWN - M. McEVERS	REVISED -				19-00103-00-SW	McDONOUGH	15	15	
\$MODELNAME\$		CHECKED - W. SLEEMAN	REVISED -				CONTRACT NO. 89772				
		DATE - 12/2019	REVISED -				ILLINOIS FED. AID PROJECT				
				SCALE:	SHEET 1	OF 1	SHEETS	STA.	TO STA.		