

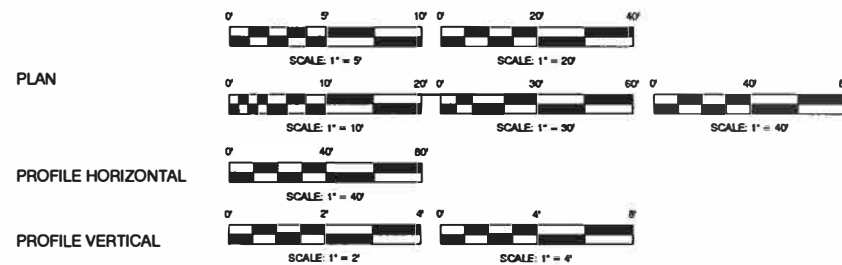
INDEX OF SHEETS

- 1 COVER SHEET
- 2 TYPICAL SECTIONS AND SUMMARY OF QUANTITIES
- 3 SCHEDULES OF QUANTITIES
- 4 EXISTING CONTROL, DEMOLITION PLAN AND PROFILE VIEWS
- 5 PLAN VIEW
- 6 ENLARGED CROSSWALK PLAN VIEW
- 7 PAVEMENT MARKINGS, SIGNAGE, LIGHTING, AND CONDUIT PLAN
- 8 STAGING AND TRAFFIC CONTROL
- 9 CABLE DIAGRAMS
- 10 RRFB LAYOUT PLAN
- 11 URBAN ENTRANCES, ACCESSIBLE TO THE DISABLED, FOR SEPARATED SIDEWALKS

HIGHWAY STANDARDS

- 000001-07 STANDARD SYMBOLS, ABBREVIATIONS AND PATTERNS
- 424016-05 MID-BLOCK CURB RAMPS FOR SIDEWALKS
- 424031-02 MEDIAN PEDESTRIAN CROSSING
- 442201-03 CLASS C AND D PATCHES
- 606001-07 COMB. CURB TYPE B & COMB. CONCRETE CURB AND GUTTER
- 606301-04 PC CONCRETE ISLANDS AND MEDIANS
- 701201-05 LANE CLOSURE, 2L, 2W, DAY ONLY, FOR SPEEDS >= 45MPH
- 701301-04 LANE CLOSURE, 2L, 2W, SHORT TIME OPERATIONS
- 701306-04 LANE CLOSURE, 2L, 2W, SLOW MOVING OPERATIONS, DAY ONLY, FOR SPEEDS >= 45MPH
- 701501-06 URBAN LANE CLOSURE, 2L, 2W, UNDIVIDED
- 701701-10 URBAN LANE CLOSURE, MULTI-LANE INTERSECTION
- 701801-06 SIDEWALK, CORNER OR CROSSWALK CLOSURE
- 701901-08 TRAFFIC CONTROL DEVICES
- 720001-01 SIGN PANEL MOUNT DETAILS
- 720006-04 SIGN PANEL ERECTION DETAILS
- 728001-01 TELESCOPING STEEL SIGN SUPPORT
- 782001-01 CURB REFLECTORS
- 805001-01 ELECTRICAL SERVICE INSTALLATION DETAILS
- 814001-03 HANDHOLE
- 821101-02 LUMINAIRE WIRING IN POLE
- 830006-05 LIGHT POLE ALUMINUM DAVIT ARM
- 838001-04 LIGHT POLE FOUNDATION
- 878001-10 CONCRETE FOUNDATION DETAILS

SCALES



JULIE LOCATION

CALL JULIE 811 OR 1-800-892-0123 48 HOURS BEFORE YOU DIG EXCLUDING SATURDAYS, SUNDAYS, AND HOLIDAYS

STATE OF ILLINOIS  
DEPARTMENT OF TRANSPORTATION  
DIVISION OF HIGHWAYS  
**PLANS FOR  
PROPOSED SAFE ROUTE TO SCHOOLS**

FAS 1380 (ILLINOIS ROUTE 91)

SECTION 19-00027-00-SW  
FEDERAL PROJECT NO. YPHN(839)

JOB NO. C-94-011-20  
COUNTY OF PEORIA, ILLINOIS  
VILLAGE OF DUNLAP

VILLAGE OFFICIALS

JACK FENNELL, PRESIDENT  
TRACY KORGER, VILLAGE CLERK  
DWIGHT JOHNSON, VILLAGE TREASURER

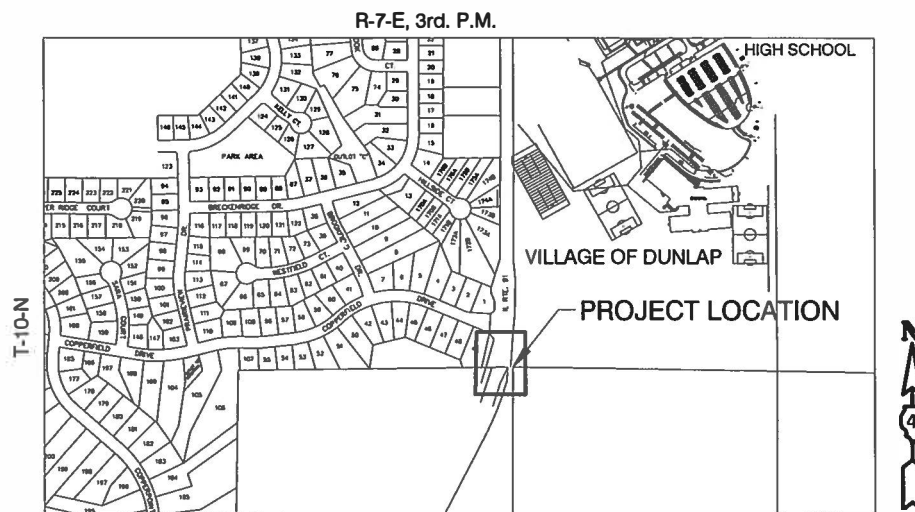
BOARD OF TRUSTEES

BOB ANDERSON  
JACK ESTERDAHL  
BEAU FEUCHTER  
ERIC KEYSER  
ROGER NELSON  
SHEILA TAYLOR

F.A.S. ROUTE	SECTION	COUNTY	TOTAL SHEETS	SHEET NO.
1380	19-00027-00-SW	PEORIA	11	1
FEDERAL ROAD DIST NO.		ILLINOIS	CONTRACT NO. 89773	



LOCATION OF PROPOSED IMPROVEMENT



LOCATION SKETCH

SCALE: 1" = 500'  
IL. RTE. 91 FROM COPPERFIELD DR., SOUTH 270 FT. TO SCHOOL PROPERTY  
GROSS LENGTH OF PROJECT: 0.058 MI.  
NET LENGTH OF PROJECT: 0.058 MI.  
TOTAL NUMBER OF PLAN SHEETS = 4

APPROVED *Jack Fennell* 202-19-20  
VILLAGE OF DUNLAP  
LOCAL AGENCY OFFICIAL

PASSED *February 21, 2020*  
*Tom Schaefer*  
DISTRICT 4 ENGINEER OF  
LOCAL ROADS & STREETS

RELEASING FOR  
BID BASED ON  
LIMITED REVIEW *February 21, 2020*  
*Dwight Johnson*  
REGION THREE ENGINEER  
STATE OF ILLINOIS  
DEPARTMENT OF TRANSPORTATION

PRINTED BY THE AUTHORITY  
OF THE STATE OF ILLINOIS



*W. Franklin Sturm II*  
DATE: 2/19/20  
W. FRANKLIN STURM II, P.E.  
ILLINOIS REGISTRATION 43062  
EXPIRES 11/30/21

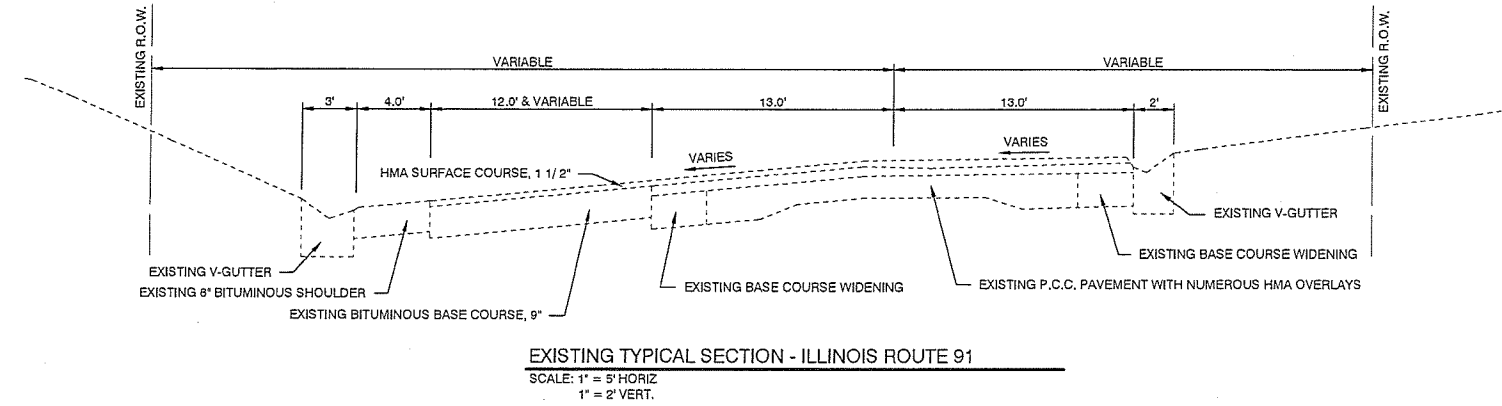
PROPOSED IMPROVEMENT CONSISTS OF CONSTRUCTING NEW SIDEWALKS AND REFUGE ISLAND, INSTALLING SIGNAGE, LIGHTING, AND PAVEMENT MARKINGS.

**M** MOHR & KERR ENGINEERING & LAND SURVEYING, P.C.  
5901 N. Prospect Road, Suite 6B Office: (309) 692-8500  
Peoria, Illinois 61614 Fax: (309) 692-8501  
www.mohrandkerr.com Professional Design Firm #184.005091

**SUMMARY OF QUANTITIES**

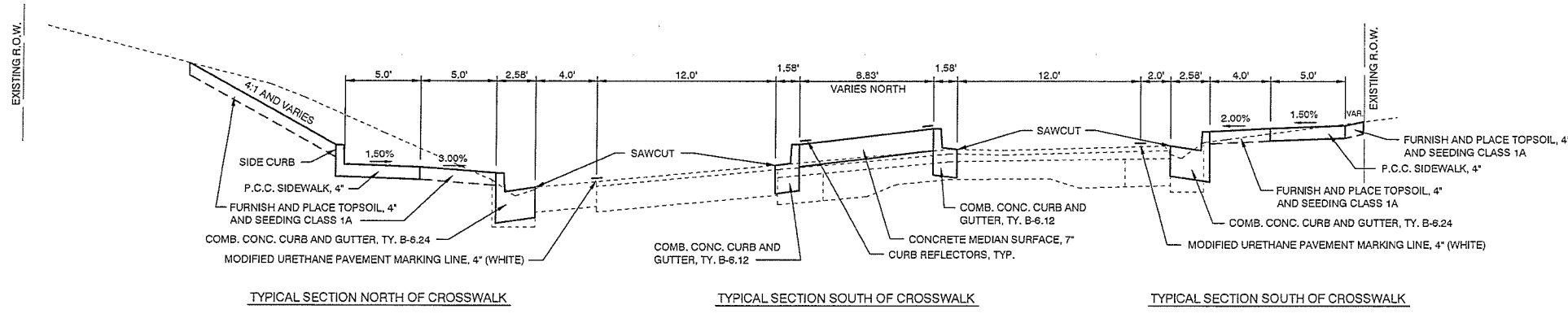
CODE NO.	ITEM	QUANTITY	UNIT
20101400	NITROGEN FERTILIZER NUTRIENT	9	LB.
20101500	PHOSPHORUS FERTILIZER NUTRIENT	9	LB.
20101600	POTASSIUM FERTILIZER NUTRIENT	9	LB.
21101615	TOPSOIL FURNISH AND PLACE, 4"	436	S.Y.
25000110	SEEDING, CLASS 1A	0.1	ACRE
25100115	MULCH, METHOD 2	0.1	ACRE
42300300	PORTLAND CEMENT CONCRETE DRIVEWAY PAVEMENT, 7"	39	S.Y.
42400100	PORTLAND CEMENT CONCRETE SIDEWALK, 4"	1654	S.F.
42400800	DETECTABLE WARNINGS	40	S.F.
44000100	PAVEMENT REMOVAL	252	S.Y.
44000400	GUTTER REMOVAL	338	FT.
60603800	COMBINATION CONCRETE CURB & GUTTER, TYPE B-6.12	210	FT.
60605000	COMBINATION CONCRETE CURB & GUTTER, TYPE B-6.24	337	FT.
60618330	CONCRETE MEDIAN SURFACE, 7"	684	S.F.
67100100	MOBILIZATION	1	L SUM
70100450	TRAFFIC CONTROL AND PROTECTION, STANDARD 701201	1	L SUM
△ 72000100	SIGN PANEL - TYPE 1	18	S.F.
72400310	REMOVE SIGN PANEL - TYPE 1	44	S.F.
△ 72800100	TELESCOPING STEEL SIGN SUPPORT	30	FT.
△ 78009000	MODIFIED URETHANE PAVEMENT MARKING - LETTERS AND SYMBOLS	47	S.F.
△ 78009004	MODIFIED URETHANE PAVEMENT MARKING -LINE, 4"	1096	FT.
△ 78009006	MODIFIED URETHANE PAVEMENT MARKING -LINE, 6"	60	FT.
△ 78009008	MODIFIED URETHANE PAVEMENT MARKING -LINE, 8"	174	FT.
△ 78009024	MODIFIED URETHANE PAVEMENT MARKING -LINE, 24"	54	FT.
△ 78200020	CURB REFLECTORS	19	EA.
△ 80500100	ELECTRIC SERVICE INSTALLATION, TYPE A	1	EA.
△ 81028340	UNDERGROUND CONDUIT, PVC, 1.5" DIA.	491	FT.
△ 81400700	HANDHOLE, PORTLAND CEMENT CONCRETE	2	EA.
△ 81702120	ELECTRIC CABLE IN CONDUIT, 600V (XLP-TYPE USE) 1/C NO. 8	1302	FT.
△ 81702130	ELECTRIC CABLE IN CONDUIT, 600V (XLP-TYPE USE) 1/C NO. 6	10	FT.
△ 81702150	ELECTRIC CABLE IN CONDUIT, 600V (XLP-TYPE USE) 1/C NO. 2	14	FT.
△ 83600200	LIGHT POLE FOUNDATION, 24" DIA.	25	FT.
△ 87301225	ELECTRIC CABLE IN CONDUIT, SIGNAL NO. 14 3C	242	FT.
△ X0326263	EQUIPMENT CABINET	1	EA.
△ X0327008	REMOVE AND RELOCATE SIGN, (SPECIAL)	1	EA.
X0327980	PAVEMENT MARKING REMOVAL - WATER BLASTING	658	S.F.
X0556100	PARTIAL DEPTH PATCHING (SPECIAL)	10	S.Y.
△ X1400211	LIGHT POLE SPECIAL, 30'	5	EA.
△ X1400326	RECTANGULAR RAPID FLASHING BEACON ASSEMBLY (COMPLETE)	4	EA.
X7270025	REMOVE EXISTING SIGN SUPPORT	2	EA.
△ X8130110	JUNCTION BOX (SPECIAL)	2	EA.
△ X8250505	LIGHTING CONTROLLER, SPECIAL	1	EA.

△ SPECIALTY ITEMS



EXISTING TYPICAL SECTION - ILLINOIS ROUTE 91

SCALE: 1" = 5' HORIZ  
1" = 2' VERT.

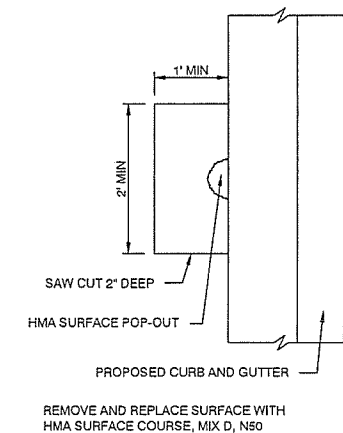


PROPOSED TYPICAL SECTION - ILLINOIS ROUTE 91

SCALE: 1" = 5' HORIZ  
1" = 2' VERT.

**GENERAL NOTES**

- PLAN ELEVATIONS - U.S.G.S. MEAN SEA LEVEL DATUM**  
ALL ELEVATIONS SHOWN ON THE PLANS ARE ESTABLISHED FROM U.S.G.S. MEAN SEA LEVEL DATUM.
- EARTH EXCAVATION - INCIDENTAL TO CURB, GUTTER, DRIVEWAY, AND SIDEWALK**  
EARTH EXCAVATION AND BACKFILL FOR PROPOSED CURB AND GUTTERS, DRIVEWAY PAVEMENTS, AND SIDEWALKS SHALL BE INCLUDED IN THE UNIT COST OF THE VARIOUS ITEMS.
- ENVIRONMENTAL REVIEWS**  
PRIOR TO THE USE OF ANY PROPOSED BORROW AREAS, USE AREAS (TEMPORARY ACCESS ROADS, DETOURS, RUN-AROUNDS, ETC.) AND/OR WASTE AREAS, THE CONTRACTOR SHALL FILE THE REQUIRED ENVIRONMENTAL RESOURCE REQUEST SURVEYS ACCORDING TO SECTION 107.22 OF THE STANDARD SPECIFICATIONS. THESE SURVEYS ARE REQUIRED IN ORDER FOR THE DEPARTMENT TO CONDUCT CULTURAL AND BIOLOGICAL RESOURCE SURVEYS FOR THE PROPOSED SITE.  
  
THE REQUIRED ENVIRONMENTAL RESOURCE DOCUMENTATION SHALL INCLUDE THE FOLLOWING:  
- BDE FORM 2289 (CULTURAL AND NATURAL RESOURCES REVIEW OF BORROW AREAS)  
- BDE FORM 2290 (WASTE/USE AREA REVIEW)  
- A LOCATION MAP SHOWING THE SIZE LIMITS AND LOCATION OF THE USE AREA  
- COLOR PHOTOGRAPHS DEPICTING THE USE AREA  
- BORROW AREA ENTRY AGREEMENT FORM - D4 P10101  
  
PRIOR TO ANY WASTE MATERIALS BEING REMOVED FROM THE CONSTRUCTION SITE, THE REQUIRED ENVIRONMENTAL RESOURCE SURVEYS SHALL BE OBTAINED AND FILED BY THE CONTRACTOR. EXCESS WASTE PRODUCTS REMOVED FROM THE CONSTRUCTION SITE SHALL BE DISPOSED OF AS REQUIRED IN SECTION 202.03 OF THE STANDARD SPECIFICATIONS.  
  
ANY PROTRUDING METAL BARS SHALL BE REMOVED PRIOR TO THE DISPOSAL OF BROKEN CONCRETE AT APPROVED DISPOSAL SITES.  
  
PLEASE NOTE THAT A MINIMUM OF FOUR WEEKS SHALL BE ALLOWED FOR THE DISTRICT TO OBTAIN THE REQUIRED WASTE SITE ENVIRONMENTAL CLEARANCES AND SIX WEEKS FOR THE REQUIRED BORROW SITE ENVIRONMENTAL CLEARANCES.
- SIGN POST HOLES**  
VERTICAL HOLES SHALL BE CONSTRUCTED IN THE ISLAND PAVEMENT AND/OR CONCRETE MEDIAN OF THE TYPE SPECIFIED OR CONCRETE MEDIAN SURFACE 4 INCHES (100MM). THE HOLES SHALL BE 24 INCHES (600MM) IN DIAMETER OR 24 INCHES (600MM) SQUARE AND THEY SHALL BE FREE OF ANY OBSTRUCTION, EXCEPT EARTH, FOR A DEPTH OF 5 FEET (1.5M) AT THE LOCATIONS SHOWN ON THE PLANS OR AS DIRECTED BY THE ENGINEER. ANY HOLES NOT USED FOR THE PLACEMENT OF SIGNS SHALL BE FILLED AND COMPACTED FLUSH WITH THE TOP OF THE ISLAND PAVEMENT, CONCRETE MEDIAN OF THE TYPES SPECIFIED, OR CONCRETE MEDIAN SURFACE 4 INCHES (100MM). THE TOP 3 INCHES (75MM) OF SAID COMPACTED FILL SHALL CONSIST OF A HOT-MIX ASPHALT MIXTURE. ALL HOLES IN WHICH THE SIGN POSTS ARE INSTALLED AT THE TIME OF THIS CONTRACT SHALL BE SIMILARLY FILLED.  
  
THIS WORK, INCLUDING ANY REQUIRED PAVEMENT REMOVAL NECESSARY TO CONSTRUCT THE SIGN POST HOLES, WILL NOT BE PAID FOR SEPARATELY BUT SHALL BE INCLUDED IN THE CONTRACT UNIT PRICE PER SQUARE FOOT (SQUARE METER) FOR ISLAND PAVEMENT AND/OR CONCRETE MEDIAN OF THE TYPE SPECIFIED, OR CONCRETE MEDIAN SURFACE, 4 INCHES (100MM).
- ADDITIONAL SUPPLEMENTAL TRAFFIC CONTROL**  
THE DEPARTMENT RESERVES THE RIGHT AT ANY TIME TO ADD ADDITIONAL TRAFFIC CONTROL SYSTEMS OR DEVICES WITHIN THE ACTIVE CONTRACT LIMITS, BY MEANS OF AN ADDITIONAL CONTRACT. ALL TERMS OF ARTICLE 105.08 OF THE STANDARD SPECIFICATIONS SHALL BE FOLLOWED BY EACH CONTRACTOR.
- SIGNING**  
SIGN LOCATIONS MAY VARY FROM THE STATIONS SHOWN ON THE PLANS IN ACCORDANCE WITH DIRECTIONS FROM THE ENGINEER AT THE TIME OF CONSTRUCTION. SIGN LOCATIONS MAY BE ADJUSTED IN THE FIELD TO AVOID ANY FOUND UTILITIES.  
  
ALL WOOD POST LOCATIONS SHALL BE VERIFIED WITH THE BUREAU OF OPERATIONS, TRAFFIC SECTION, BEFORE INSTALLATION.
- P.C.C. SIDEWALK**  
ALL SIDEWALKS SHALL BE ADA COMPLIANT. THE SIDE CURB AT ACCESSIBLE RAMPS AND AT THE BACK OF SIDEWALKS SHALL BE INCLUDED IN THE COST AND MEASUREMENT OF THE P.C.C. SIDEWALK, 4".



PARTIAL DEPTH PATCH DETAIL  
N.T.S.

M:\18-422 Dunlap Rte 91 Crossing\DWG\TYPICAL SCHEDULE SUMMARY 18-422.dwg, Feb 19, 2020

**M MOHR & KERR ENGINEERING & LAND SURVEYING, P.C.**  
5901 N. Prospect Road, Suite 6B Office: (309) 692-8500  
Peoria, Illinois 61614 Fax: (309) 692-8501  
www.mohrandkerr.com Professional Design Firm #184.005091

DESIGNED	WFS	REVISED
DRAWN	DH/BR	REVISED
CHECKED	WFS	REVISED
DATE	02-19-20	REVISED

STATE OF ILLINOIS  
DEPARTMENT OF TRANSPORTATION

S.R.T.S., IL RTE. 91 CROSSING, DUNLAP, IL  
TYPICAL SECTIONS AND SUMMARY OF QUANTITIES  
SCALE: AS NOTED SHEET NO. 2 OF 10 SHEETS STA. - TO STA. -

F.A.S. ROUTE	SECTION	COUNTY	TOTAL SHEETS	SHEET NO.
1380	19-00027-00-SW	PEORIA	11	2
CONTRACT NO. 89773				
ILLINOIS FEDERAL ROAD DIST NO.				

**SEEDING SCHEDULE**

FERTILIZER TO BE APPLIED @ 270 LB. PER ACRE @ 1-1-1 RATIO

LOCATION	TOPSOIL FURNISHING AND PLACING, 4" (S.Y.) *	SEEDING CLASS 1A (ACRE)	NITROGEN FERTILIZER NUTRIENT (POUND)	PHOSPHORUS FERTILIZER NUTRIENT (POUND)	POTASSIUM FERTILIZER NUTRIENT (POUND)	MULCH METHOD 2 (ACRE)
ILLINOIS ROUTE 91						
LT. SIDE = 0.070 ACRE	436	0.07	6	6	6	0.07
RT. SIDE = 0.030 ACRE		0.03	3	3	3	0.03
<b>PROJECT TOTALS</b>	<b>436 S.Y.</b>	<b>0.1 ACRE</b>	<b>9 LB.</b>	<b>9 LB.</b>	<b>9 LB.</b>	<b>0.1 ACRE</b>

\* 436 S.Y. EQUATES TO 48.4 C.Y. OF TOPSOIL AT 4" THICK

PORTLAND CEMENT CONCRETE DRIVEWAY PAVEMENT, 7"	42300300
LOCATION	
RT. STA. 79+13.23 TO RT. STA. 79+52.56	39 S.Y.
PROJECT TOTAL	39 S.Y.

PORTLAND CEMENT CONCRETE SIDEWALK, 4"	42400100
LOCATION	
26.58' RT. STA. 78+99.82 TO 26.58' RT. STA. 79+13.23	69 S.F.
26.58' RT. STA. 79+52.56 TO 22.00' RT. STA. 80+07.04	325 S.F.
24.00' LT. STA. 80+07.04 TO 76.49' LT. STA. 81+89.28	1188 S.F.
RT. STA. 80+07.04 TO LT. STA. 80+07.04	72 S.F.
PROJECT TOTAL	1654 S.F.

DETECTABLE WARNINGS	42400800
LOCATION	
03.50' LT. STA. 80+07.04	10 S.F.
25.53' LT. STA. 80+07.04	10 S.F.
03.50' RT. STA. 80+07.04	10 S.F.
24.08' RT. STA. 80+07.04	10 S.F.
PROJECT TOTAL	40 S.F.

PAVEMENT REMOVAL	44000100
LOCATION	
CL. STA. 79+49.7 TO CL. STA. 80+56.6	175 S.Y.
18.0' RT. STA. 78+94.4 TO 18.0' RT. STA. 80+35.95	29 S.Y.
20.0' LT. STA. 79+72.9 TO 25.3' LT. STA. 81+69.25	48 S.Y.
PROJECT TOTAL	252 S.Y.

GUTTER REMOVAL	44000400
LOCATION	
18.00' RT. STA. 78 + 94.39 TO 18.00' RT. STA. 80 + 35.95	142 FT.
20.00' LT. STA. 79 + 72.89 TO 25.29' LT. STA. 81 + 69.29	196 FT.
PROJECT TOTAL	338 FT.

COMBINATION CONCRETE CURB AND GUTTER, TYPE B-6.12	60603800
LOCATION	
LT. STA. 79+52.67 TO 3.16' LT. STA. 80+53.61	105 FT.
RT. STA. 79+52.67 TO 3.16' LT. STA. 80+53.61	105 FT.
PROJECT TOTAL	210 FT.

COMBINATION CONCRETE CURB AND GUTTER, TYPE B-6.24	60605000
LOCATION	
19.48' RT. STA. 78+94.40 TO 20.00' RT. STA. 80+35.93	144 FT.
21.77' LT. STA. 79+72.89 TO 27.01' LT. STA. 81+68.26	193 FT.
PROJECT TOTAL	337 FT.

CONCRETE MEDIAN SURFACE, 7 INCH	60618330
LOCATION	
CL. STA. 79+53.3 TO CL. STA. 80+03.0	431 S.F.
CL. STA. 80+11.1 TO 03.1' LT. STA. 80+53.0	253 S.F.
PROJECT TOTAL	684 S.F.

SIGN PANEL - TYPE 1	72000100
LOCATION	
25.50' RT. STA. 79+54.25	9 S.F.
27.50' LT. STA. 80+61.10	9 S.F.
PROJECT TOTAL	18 S.F.

REMOVE SIGN PANEL - TYPE 1	72400310
LOCATION	
30.75' LT. STA. 80+23.23	22 S.F.
29.47' RT. STA. 80+22.61	22 S.F.
PROJECT TOTAL	44 S.F.

TELESCOPING STEEL SIGN SUPPORT	72800100
LOCATION	
25.50' RT. STA. 79+54.25	15 FT.
27.50' LT. STA. 80+61.10	15 FT.
PROJECT TOTAL	30 FT.

**MODIFIED URETHANE PAVEMENT MARKINGS**

IL. RTE. 91  
STA. 78+94.39 TO STA. 81+93.23

	WHITE	YELLOW	TOTAL	
LETTERS AND SYMBOLS (S.F.) 78009000	47	-	47	S.F.
4" LINE (FT.) 78009004	539	557	1096	FT.
6" LINE (FT.) 78009006	60	-	60	FT.
8" LINE (FT.) 78009008	100	74	174	FT.
24" LINE (FT.) 78009024	54	-	54	FT.

CURB REFLECTORS	78200020
LOCATION	
CL. STA. 79+52.67 TO 3.16' LT. STA. 80+53.61	19 EA.
PROJECT TOTAL	19 EA.

**CONDUIT AND ELECTRIC CABLE**

FROM	TO	UNDRGRD C PVC 1.5"	ECC XLP USE 1 C 2	ECC XLP USE 1 C 6	ECC XLP USE 1 C 8
		81028340	81702150	81702130	81702120
AMEREN POLE	SERV. INSTALL	4 FT.	14 FT.	10 FT.	0 FT.
SERV. INSTALL	LIGHT CONTROLLER	40 FT.	0 FT.	0 FT.	132 FT.
LIGHT CONTROLLER SPL	H.H. #1	5 FT.	0 FT.	0 FT.	27 FT.
H.H. #1	L-1	3 FT.	0 FT.	0 FT.	21 FT.
H.H. #1	L-2	130 FT.	0 FT.	0 FT.	402 FT.
L-1	H.H. #2	68 FT.	0 FT.	0 FT.	216 FT.
H.H. #2	L-3	4 FT.	0 FT.	0 FT.	24 FT.
H.H. #2	L-4	72 FT.	0 FT.	0 FT.	228 FT.
L-4	L-5	80 FT.	0 FT.	0 FT.	252 FT.
PAGE TOTALS		406 FT.	14 FT.	10 FT.	1302 FT.

HANDHOLE, PORTLAND CEMENT CONCRETE	81400700
LOCATION	
31.90' RT. STA. 80+12.00	1 EA.
36.11' LT. STA. 80+12.00	1 EA.
PROJECT TOTAL	2 EA.

**CONDUIT AND ELECTRIC CABLE**

FROM	TO	UNDRGRD C PVC 1.5"	ELCBL C SIGNAL 14 3C
		81028340	87301225
RRFB CONTR.	JB1	6 FT.	24 FT.
JB1	RRFB1	3 FT.	18 FT.
JB1	JB2	27 FT.	66 FT.
JB2	RRFB2	3 FT.	18 FT.
JB2	RRFB3	12 FT.	36 FT.
JB2	RRFB4	34 FT.	80 FT.
PAGE TOTALS		85 FT.	242 FT.

**LIGHT POLE FOUNDATION, 24" DIA. 83600200**

LOCATION	
L-1	5 FT.
L-2	5 FT.
L-3	5 FT.
L-4	5 FT.
L-5	5 FT.
PROJECT TOTAL	25 FT.

EQUIPMENT CABINET	X0326263
LOCATION	
32.04' RT. STA. 80+16.52	1 EA.
PROJECT TOTAL	1 EA.

REMOVE AND RELOCATE SIGN, (SPECIAL)	X0327008
LOCATION	
(E) 32' RT. STA. 79+16 TO 32' RT. STA. 78+98	1 EA.
PROJECT TOTAL	1 EA.

PAVEMENT MARKINGS REMOVAL - WATER BLASTING	X0327980
LOCATION	
LEFT ARROW	31 S.F.
4" LINE	487 S.F.
6" LINE	42 S.F.
8" LINE	98 S.F.
PROJECT TOTAL	658 S.F.

PARTIAL DEPTH PATCHING (SPECIAL)	X0556100
LOCATION	
VARIOUS	10 S.Y.
PROJECT TOTAL	10 S.Y.

**LIGHT POLE SPECIAL, 30' X1400211**

LOCATION	
32.3' RT. STA. 79+04.7	1 EACH
29.4' RT. STA. 80+12.0	1 EACH
37.2' LT. STA. 80+07.0	1 EACH
37.2' LT. STA. 80+85.6	1 EACH
45.4' LT. STA. 81+64.6	1 EACH
PROJECT TOTAL	5 EACH

**R R FL BEACON A COMP X1400326**

LOCATION	QUANTITY
01.50' LT. STA. 80+02.45	1 EA.
28.59' LT. STA. 80+03.39	1 EA.
26.58' RT. STA. 80+10.56	1 EA.
01.49' RT. STA. 80+11.62	1 EA.
PROJECT TOTALS	4 EA.

**REMOVE EXISTING SIGN SUPPORT X7270025**

LOCATION	
30.75' LT. STA. 80+23.23	1 EA.
29.47' RT. STA. 80+22.61	1 EA.
PROJECT TOTAL	2 EA.

**JUNCTION BOX (SPECIAL) X8130110**

LOCATION	
1.27' LT. STA. 80+13.52	1 EA.
26.62' RT. STA. 80+13.52	1 EA.
PROJECT TOTAL	2 EA.

**LIGHTING CONTROLLER, (SPECIAL) X8250505**

LOCATION	
32.04' RT. STA. 80+16.52	1 EA.
PROJECT TOTAL	1 EA.

N:\18-422-Dunlap-Rte 91\_Crossing\DWG\2 TYPICAL SCHEDULE SUMMARY 18-422.dwg Feb 20, 2020

**M MOHR & KERR ENGINEERING & LAND SURVEYING, P.C.**  
 5901 N. Prospect Road, Suite 6B Office: (309) 692-8500  
 Peoria, Illinois 61614 Fax: (309) 692-8501  
 www.mohrandkerr.com Professional Design Firm #184.005091

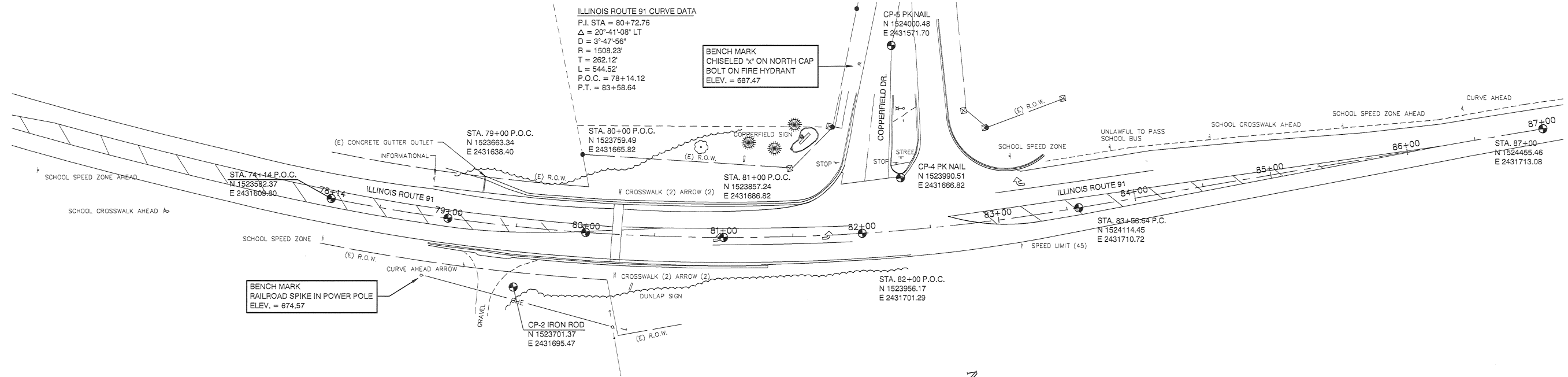
DESIGNED	WFS	REVISED
DRAWN	DH/BR	REVISED
CHECKED	WFS	REVISED
DATE	02-19-20	REVISED

STATE OF ILLINOIS  
DEPARTMENT OF TRANSPORTATION

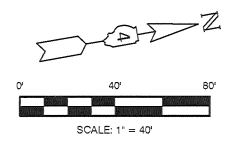
S.R.T.S., IL. RTE. 91 CROSSING, DUNLAP, IL  
SCHEDULES OF QUANTITIES  
SCALE: AS NOTED SHEET NO. 3 OF 10 SHEETS STA. - TO STA. -

F.A.S. ROUTE	SECTION	COUNTY	TOTAL SHEETS	SHEET NO.
1380	19-00027-00-SW	PEORIA	11	3
CONTRACT NO. 89773				
ILLINOIS FEDERAL ROAD DIST NO.				





EXISTING CONTROL PLAN VIEW  
SCALE: 1" = 40'



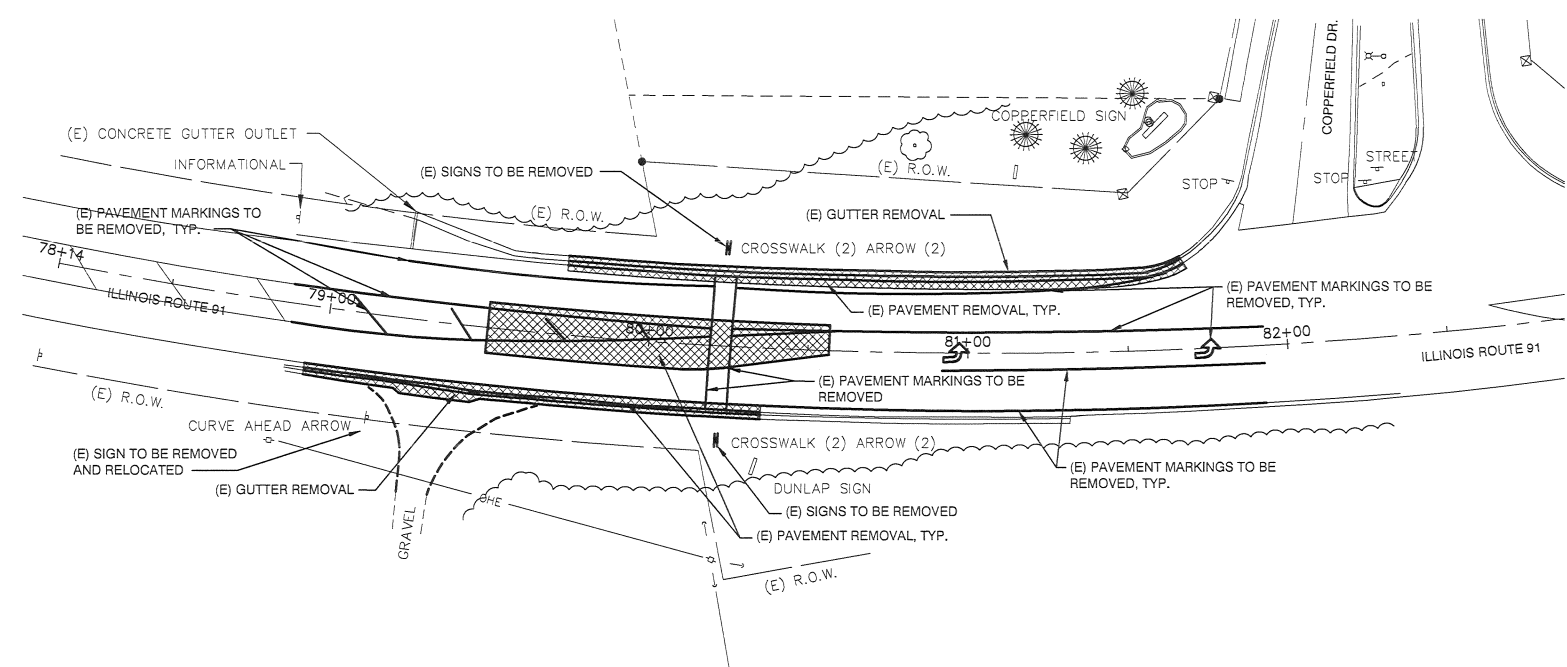
GUTTER REMOVAL	44000400
LOCATION	
18.00' RT. STA. 78 + 94.39 TO 18.00' RT. STA. 80 + 35.95	142 FT.
20.00' LT. STA. 79 + 72.89 TO 25.29' LT. STA. 81 + 69.29	196 FT.
PROJECT TOTAL	338 FT.

REMOVE SIGN PANEL - TYPE 1	72400310
LOCATION	
30.75' LT. STA. 80+23.23	22 S.F.
29.47' RT. STA. 80+22.61	22 S.F.
PROJECT TOTAL	44 S.F.

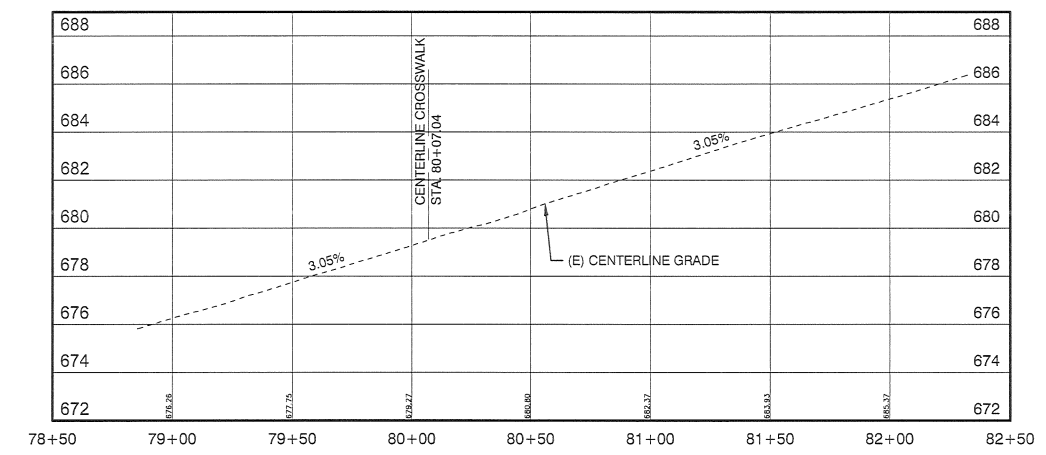
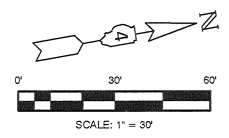
PAVEMENT MARKINGS REMOVAL - WATER BLASTING	X0327980
LOCATION	
LEFT ARROW	31 S.F.
4" LINE	487 S.F.
6" LINE	42 S.F.
8" LINE	98 S.F.
PROJECT TOTAL	658 S.F.

PAVEMENT REMOVAL	44000100
LOCATION	
CL. STA. 79+49.7 TO CL. STA. 80+56.6	175 S.Y.
18.0' RT. STA. 78+94.4 TO 18.0' RT. STA. 80+35.95	29 S.Y.
20.0' LT. STA. 79+72.9 TO 25.3' LT. STA. 81+69.25	48 S.Y.
PROJECT TOTAL	252 S.Y.

REMOVE EXISTING SIGN SUPPORT	X7270025
LOCATION	
30.75' LT. STA. 80+23.23	1 EA.
29.47' RT. STA. 80+22.61	1 EA.
PROJECT TOTAL	2 EA.



EXISTING DEMOLITION PLAN VIEW  
SCALE: 1" = 30'



EXISTING CENTERLINE PROFILE VIEW  
SCALE: 1" = 40' HORIZ.  
1" = 4' VERT.

N:\19-422-Dunlap\_Rte 91 Crossing\DWG18 - DEMO PLAN VIEW 18-422.dwg Feb 19, 2020

**M MOHR & KERR ENGINEERING & LAND SURVEYING, P.C.**  
 5901 N. Prospect Road, Suite 6B Office: (309) 692-8500  
 Peoria, Illinois 61614 Fax: (309) 692-8501  
 www.mohrandkerr.com Professional Design Firm #184.005091

DESIGNED	WFS	REVISED
DRAWN	DH/BR	REVISED
CHECKED	WFS	REVISED
DATE	02-19-20	REVISED

STATE OF ILLINOIS  
DEPARTMENT OF TRANSPORTATION

S.R.T.S., IL. RTE. 91 CROSSING, DUNLAP, IL	
EXISTING CONTROL, DEMOLITION PLAN AND PROFILE VIEWS	
SCALE: AS NOTED	SHEET NO. 4 OF 10 SHEETS
STA. 74+15 TO STA. 87+00	

F.A.S. ROUTE	SECTION	COUNTY	TOTAL SHEETS	SHEET NO.
1380	19-00027-00-SW	PEORIA	11	4
CONTRACT NO. 89773				
ILLINOIS FEDERAL ROAD DIST NO.				

DETECTABLE WARNINGS	42400800
LOCATION	
03.50' LT. STA. 80+07.04	10 S.F.
25.53' LT. STA. 80+07.04	10 S.F.
03.50' RT. STA. 80+07.04	10 S.F.
24.08' RT. STA. 80+07.04	10 S.F.
PROJECT TOTAL	40 S.F.

PORTLAND CEMENT CONCRETE DRIVEWAY PAVEMENT, 7"	42300300
LOCATION	
RT. STA. 79+13.23 TO RT. STA. 79+52.56	39 S.Y.
PROJECT TOTAL	39 S.Y.

PORTLAND CEMENT CONCRETE SIDEWALK, 4"	42400100
LOCATION	
26.58' RT. STA. 78+99.82 TO 26.58' RT. STA. 79+13.23	69 S.F.
26.58' RT. STA. 79+52.56 TO 22.00' RT. STA. 80+07.04	325 S.F.
24.00' LT. STA. 80+07.04 TO 76.49' LT. STA. 81+89.28	1188 S.F.
RT. STA. 80+07.04 TO LT. STA. 80+07.04	72 S.F.
PROJECT TOTAL	1654 S.F.

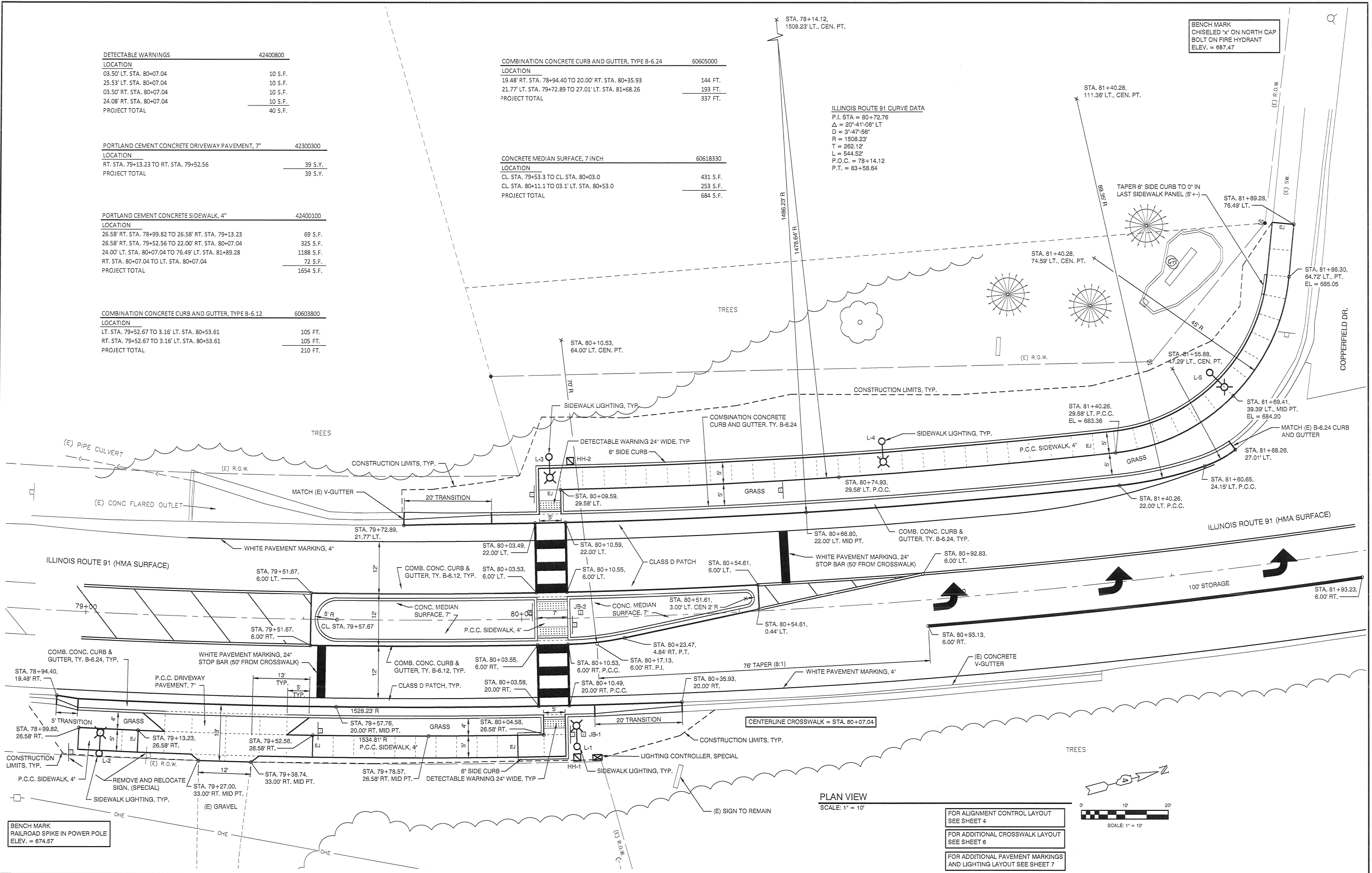
COMBINATION CONCRETE CURB AND GUTTER, TYPE B-6.12	60603800
LOCATION	
LT. STA. 79+52.67 TO 3.16' LT. STA. 80+53.61	105 FT.
RT. STA. 79+52.67 TO 3.16' LT. STA. 80+53.61	105 FT.
PROJECT TOTAL	210 FT.

COMBINATION CONCRETE CURB AND GUTTER, TYPE B-6.24	60605000
LOCATION	
19.48' RT. STA. 78+94.40 TO 20.00' RT. STA. 80+35.93	144 FT.
21.77' LT. STA. 79+72.89 TO 27.01' LT. STA. 81+68.26	193 FT.
PROJECT TOTAL	337 FT.

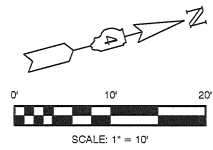
CONCRETE MEDIAN SURFACE, 7 INCH	60618330
LOCATION	
CL. STA. 79+53.3 TO CL. STA. 80+03.0	431 S.F.
CL. STA. 80+11.1 TO 03.1' LT. STA. 80+53.0	253 S.F.
PROJECT TOTAL	684 S.F.

**ILLINOIS ROUTE 91 CURVE DATA**  
 P.I. STA = 80+72.76  
 $\Delta = 20^{\circ}41'08''$  LT  
 $D = 3^{\circ}47'56''$   
 $R = 1508.23'$   
 $T = 262.12'$   
 $L = 544.52'$   
 $P.O.C. = 78+14.12$   
 $P.T. = 83+58.64$

BENCH MARK  
 CHISELED 'X' ON NORTH CAP  
 BOLT ON FIRE HYDRANT  
 ELEV. = 687.47



PLAN VIEW  
 SCALE: 1" = 10'



- FOR ALIGNMENT CONTROL LAYOUT SEE SHEET 4
- FOR ADDITIONAL CROSSWALK LAYOUT SEE SHEET 6
- FOR ADDITIONAL PAVEMENT MARKINGS AND LIGHTING LAYOUT SEE SHEET 7

N:\19-422-Dunlap Rte 91 Crossing\DWG-PLAN AND PROFILE 19-422.dwg, Feb 19, 2020

**M MOHR & KERR ENGINEERING & LAND SURVEYING, P.C.**  
 5901 N. Prospect Road, Suite 6B Office: (309) 692-8500  
 Peoria, Illinois 61614 Fax: (309) 692-8501  
 www.mohrandkerr.com Professional Design Firm #184.005091

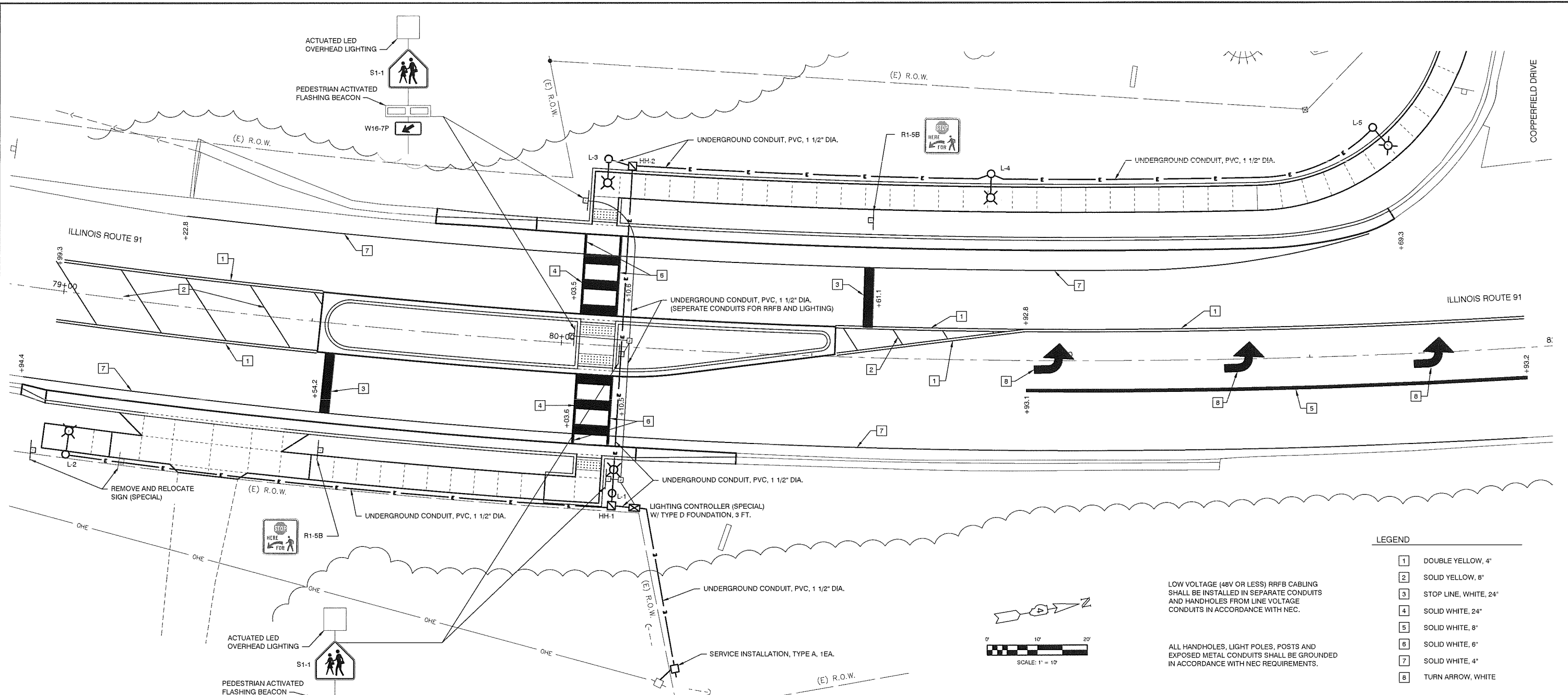
DESIGNED	WFS	REVISED
DRAWN	DH/BR	REVISED
CHECKED	WFS	REVISED
DATE	02-19-20	REVISED

STATE OF ILLINOIS  
 DEPARTMENT OF TRANSPORTATION

S.R.T.S., IL. RTE. 91 CROSSING, DUNLAP, IL	
PLAN VIEW	
SCALE: 1" = 10'	SHEET NO. 5 OF 10 SHEETS
STA. 78+80 TO STA. 81+95	

F.A.S. ROUTE	SECTION	COUNTY	TOTAL SHEETS	SHEET NO.
1380	19-00027-00-SW	PEORIA	11	5
CONTRACT NO. 89773				
ILLINOIS FEDERAL ROAD DIST NO.				



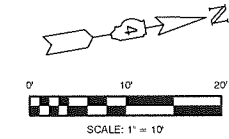


**PAVEMENT MARKINGS, SIGNAGE, LIGHTING AND CONDUIT PLAN**  
SCALE: 1" = 10'

- LEGEND**
- 1 DOUBLE YELLOW, 4"
  - 2 SOLID YELLOW, 8"
  - 3 STOP LINE, WHITE, 24"
  - 4 SOLID WHITE, 24"
  - 5 SOLID WHITE, 8"
  - 6 SOLID WHITE, 6"
  - 7 SOLID WHITE, 4"
  - 8 TURN ARROW, WHITE

LOW VOLTAGE (48V OR LESS) RRFB CABLING SHALL BE INSTALLED IN SEPARATE CONDUITS AND HANDHOLES FROM LINE VOLTAGE CONDUITS IN ACCORDANCE WITH NEC.

ALL HANDHOLES, LIGHT POLES, POSTS AND EXPOSED METAL CONDUITS SHALL BE GROUNDED IN ACCORDANCE WITH NEC REQUIREMENTS.



LOCATION	QUANTITY	DESCRIPTION
32.3' RT. STA. 79+04.7	1 EACH	LIGHT POLE SPECIAL, 30'
29.4' RT. STA. 80+12.0	1 EACH	
37.2' LT. STA. 80+07.0	1 EACH	
37.2' LT. STA. 80+85.6	1 EACH	
45.4' LT. STA. 81+64.6	1 EACH	
<b>PROJECT TOTAL</b>	<b>5 EACH</b>	

LOCATION	QUANTITY	DESCRIPTION
(E) 32' RT. STA. 79+16 TO 32' RT. STA. 78+98	1 EA.	REMOVE AND RELOCATE SIGN, (SPECIAL)
<b>PROJECT TOTAL</b>	<b>1 EA.</b>	

LOCATION	QUANTITY	DESCRIPTION
31.90' RT. STA. 80+12.00	1 EA.	HANDHOLE, PORTLAND CEMENT CONCRETE
36.11' LT. STA. 80+12.00	1 EA.	
<b>PROJECT TOTAL</b>	<b>2 EA.</b>	

LOCATION	QUANTITY	DESCRIPTION
32.04' RT. STA. 80+16.52	1 EA.	LIGHTING CONTROLLER, (SPECIAL)
36.11' LT. STA. 80+12.00	1 EA.	
<b>PROJECT TOTAL</b>	<b>2 EA.</b>	

LOCATION	QUANTITY	DESCRIPTION
25.50' RT. STA. 79+54.25	9 S.F.	SIGN PANEL - TYPE 1
27.50' LT. STA. 80+61.10	9 S.F.	
<b>PROJECT TOTAL</b>	<b>18 S.F.</b>	

LOCATION	QUANTITY	DESCRIPTION
25.50' RT. STA. 79+54.25	15 FT.	TELESCOPING STEEL SIGN SUPPORT
27.50' LT. STA. 80+61.10	15 FT.	
<b>PROJECT TOTAL</b>	<b>30 FT.</b>	

LOCATION	TYPE	SIGN CODE
IL RTE. 91		
25.50' RT. STA. 79+54.25	STOP HERE FOR PEDESTRIAN	R1-5B
01.50' LT. STA. 80+02.45	RRFB ASSEMBLY (COMPLETE)	S1-1, W16-7P, R10-25
28.59' LT. STA. 80+03.39	RRFB ASSEMBLY (COMPLETE)	S1-1, W16-7P, R10-25
26.58' RT. STA. 80+10.56	RRFB ASSEMBLY (COMPLETE)	S1-1, W16-7P, R10-25
01.49' RT. STA. 80+11.62	RRFB ASSEMBLY (COMPLETE)	S1-1, W16-7P, R10-25
27.50' LT. STA. 80+61.10	STOP HERE FOR PEDESTRIAN	R1-5B

LINE (FT.)	WHITE	YELLOW	TOTAL	S.F.
4" LINE (FT.) 78009004	539	557	1096	FT.
6" LINE (FT.) 78009006	60	-	60	FT.
8" LINE (FT.) 78009008	100	74	174	FT.
24" LINE (FT.) 78009024	54	-	54	FT.

FROM	TO	UNDRGRD C PVC 1.5"	EC C XLP USE 1 C 2	EC C XLP USE 1 C 6	EC C XLP USE 1 C 8
AMEREN POLE	SERV. INSTALL	4 FT.	14 FT.	10 FT.	0 FT.
SERV. INSTALL	LIGHT CONTROLLER	40 FT.	0 FT.	0 FT.	132 FT.
LIGHT CONTROLLER SPL	H.H. #1	5 FT.	0 FT.	0 FT.	27 FT.
H.H. #1	L-1	3 FT.	0 FT.	0 FT.	21 FT.
H.H. #1	L-2	130 FT.	0 FT.	0 FT.	402 FT.
L-1	H.H. #2	68 FT.	0 FT.	0 FT.	216 FT.
H.H. #2	L-3	4 FT.	0 FT.	0 FT.	24 FT.
H.H. #2	L-4	72 FT.	0 FT.	0 FT.	228 FT.
L-4	L-5	80 FT.	0 FT.	0 FT.	252 FT.
<b>PAGE TOTALS</b>		<b>406 FT.</b>	<b>14 FT.</b>	<b>10 FT.</b>	<b>1302 FT.</b>

LOCATION	QUANTITY	DESCRIPTION
L-1	5 FT.	LIGHT POLE FOUNDATION, 24" DIA.
L-2	5 FT.	
L-3	5 FT.	
L-4	5 FT.	
L-5	5 FT.	
<b>PROJECT TOTAL</b>	<b>25 FT.</b>	

**MOHR & KERR ENGINEERING & LAND SURVEYING, P.C.**  
5901 N. Prospect Road, Suite 6B Peoria, Illinois 61614  
www.mohrandkerr.com

Office: (309) 692-8500  
Fax: (309) 692-8501  
Professional Design Firm #184.005091

DESIGNED	WFS	REVISED
DRAWN	DH/BR	REVISED
CHECKED	WFS	REVISED
DATE	02-19-20	REVISED

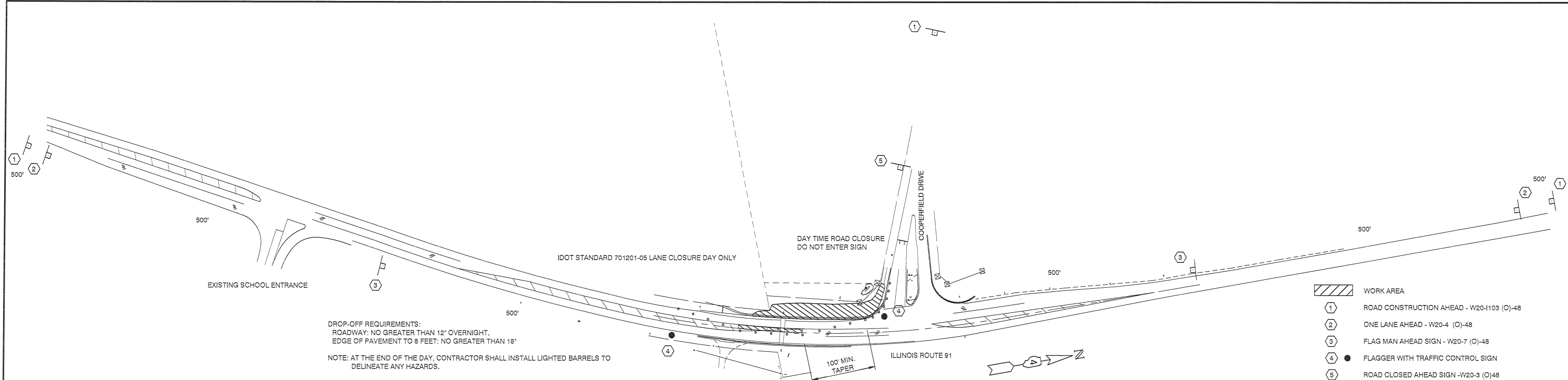
STATE OF ILLINOIS  
DEPARTMENT OF TRANSPORTATION

S.R.T.S., IL. RTE. 91 CROSSING, DUNLAP, IL  
PAVEMENT MARKINGS, SIGNAGE, LIGHTING AND CONDUIT PLAN  
SCALE: 1" = 10' SHEET NO. 7 OF 10 SHEETS STA. 78+80 TO STA. 82+00

F.A.S. ROUTE	SECTION	COUNTY	TOTAL SHEETS	SHEET NO.
1380	19-00027-00-SW	PEORIA	11	7

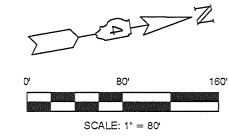
CONTRACT NO. 89773  
ILLINOIS FEDERAL ROAD DIST. NO.

N:\18-422-Dunlap-Rte 91-Crossing\DWG16 - PAVEMENT MARKING AND CONDUITS PLAN 18-422.dwg Feb 21, 2020



DROP-OFF REQUIREMENTS:  
 ROADWAY: NO GREATER THAN 12" OVERNIGHT.  
 EDGE OF PAVEMENT TO 8 FEET: NO GREATER THAN 18"  
 NOTE: AT THE END OF THE DAY, CONTRACTOR SHALL INSTALL LIGHTED BARRELS TO DELINEATE ANY HAZARDS.

**PHASE 1 STAGING PLAN**  
 SCALE: 1" = 80'



- WORK AREA**
- 1 ROAD CONSTRUCTION AHEAD - W20-1103 (O)-48
  - 2 ONE LANE AHEAD - W20-4 (O)-48
  - 3 FLAG MAN AHEAD SIGN - W20-7 (O)-48
  - 4 ● FLAGGER WITH TRAFFIC CONTROL SIGN
  - 5 ROAD CLOSED AHEAD SIGN - W20-3 (O)48
  - ⊥ TYPE III BARRICADES W/ DO NOT ENTER - R5-1 36
  - BARRELS AT 25' MAX. SPACING

**SUGGESTED SEQUENCE OF OPERATION**

**PHASE 1:**

1. INSTALL TRAFFIC CONTROL PER I.D.O.T. HIGHWAY STANDARD 701201 AND CLOSE THE SOUTH BOUND LANE AND THE CENTER LANE OF IL. RTE. 91.
2. COMPLETE NECESSARY REMOVALS.
3. CONSTRUCT THE COMBINATION CONCRETE CURB AND GUTTER, THE P.C.C. SIDEWALK, THE LIGHT POLE FOUNDATIONS, HAND HOLE, CONDUITS AND THE FOUNDATION FOR THE RECTANGULAR RAPID FLASHING BEACON (RRFB).
4. OPEN THE SOUTH BOUND LANE.

**PHASE 2:**

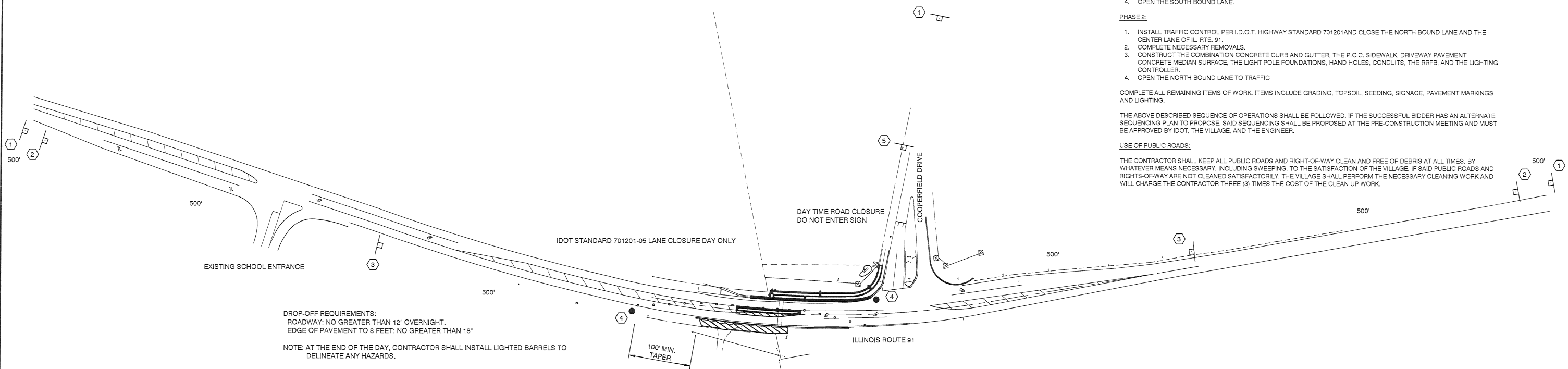
1. INSTALL TRAFFIC CONTROL PER I.D.O.T. HIGHWAY STANDARD 701201 AND CLOSE THE NORTH BOUND LANE AND THE CENTER LANE OF IL. RTE. 91.
2. COMPLETE NECESSARY REMOVALS.
3. CONSTRUCT THE COMBINATION CONCRETE CURB AND GUTTER, THE P.C.C. SIDEWALK, DRIVEWAY PAVEMENT, CONCRETE MEDIAN SURFACE, THE LIGHT POLE FOUNDATIONS, HAND HOLES, CONDUITS, THE RRFB, AND THE LIGHTING CONTROLLER.
4. OPEN THE NORTH BOUND LANE TO TRAFFIC

COMPLETE ALL REMAINING ITEMS OF WORK. ITEMS INCLUDE GRADING, TOPSOIL, SEEDING, SIGNAGE, PAVEMENT MARKINGS AND LIGHTING.

THE ABOVE DESCRIBED SEQUENCE OF OPERATIONS SHALL BE FOLLOWED. IF THE SUCCESSFUL BIDDER HAS AN ALTERNATE SEQUENCING PLAN TO PROPOSE, SAID SEQUENCING SHALL BE PROPOSED AT THE PRE-CONSTRUCTION MEETING AND MUST BE APPROVED BY IDOT, THE VILLAGE, AND THE ENGINEER.

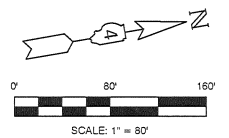
**USE OF PUBLIC ROADS:**

THE CONTRACTOR SHALL KEEP ALL PUBLIC ROADS AND RIGHT-OF-WAY CLEAN AND FREE OF DEBRIS AT ALL TIMES, BY WHATEVER MEANS NECESSARY, INCLUDING SWEEPING, TO THE SATISFACTION OF THE VILLAGE. IF SAID PUBLIC ROADS AND RIGHTS-OF-WAY ARE NOT CLEANED SATISFACTORILY, THE VILLAGE SHALL PERFORM THE NECESSARY CLEANING WORK AND WILL CHARGE THE CONTRACTOR THREE (3) TIMES THE COST OF THE CLEAN UP WORK.



DROP-OFF REQUIREMENTS:  
 ROADWAY: NO GREATER THAN 12" OVERNIGHT.  
 EDGE OF PAVEMENT TO 8 FEET: NO GREATER THAN 18"  
 NOTE: AT THE END OF THE DAY, CONTRACTOR SHALL INSTALL LIGHTED BARRELS TO DELINEATE ANY HAZARDS.

**PHASE 2 STAGING PLAN**  
 SCALE: 1" = 80'



N:\18-422-Dunlap\_Rte 91\_Crossing\DWG9 - STAGE CONTROL PLAN 18-422.dwg Feb 19, 2020

**M MOHR & KERR ENGINEERING & LAND SURVEYING, P.C.**  
 5901 N. Prospect Road, Suite 6B Office: (309) 692-8500  
 Peoria, Illinois 61614 Fax: (309) 692-8501  
 www.mohrandkerr.com Professional Design Firm #184.005091

DESIGNED	WFS	REVISED
DRAWN	DH/BR	REVISED
CHECKED	WFS	REVISED
DATE	02-19-20	REVISED

STATE OF ILLINOIS  
 DEPARTMENT OF TRANSPORTATION

S.R.T.S., IL. RTE. 91 CROSSING, DUNLAP, IL  
 STAGING AND TRAFFIC CONTROL PLAN

SCALE: 1" = 80'	SHEET NO. 8 OF 10 SHEETS	STA. 74+15 TO STA. 87+00
-----------------	--------------------------	--------------------------

F.A.S. ROUTE	SECTION	COUNTY	TOTAL SHEETS	SHEET NO.
1380	19-00027-00-SW	PEORIA	11	8
CONTRACT NO. 89773				
ILLINOIS FEDERAL ROAD DIST NO.				



ALL LIGHT POLES, EXPOSED CONDUITS, AND HANDHOLES SHALL BE GROUNDED/BONDED IN ACCORDANCE WITH NEC REQUIREMENTS.

ALL CONDUITS INSTALLED ABOVE GRADE SHALL BE STAINLESS STEEL.

THE CONTRACTOR SHALL FURNISH AND INSTALL 1 1/2" DIA. STAINLESS STEEL CONDUIT ATTACHED TO STRUCTURES. THE COST OF THE CONDUIT SHALL BE INCLUDED IN THE COST OF THE LIGHTING CONTROLLER.

**LIGHTING BILL OF MATERIALS**

80500100	SERVICE INSTALLATION, TYPE A	1 EA.
81028340	UNDERGROUND CONDUIT, PVC, 1.5" DIA.	406 FT.
81400700	HANDHOLE, PORTLAND CEMENT CONCRETE	2 EA.
81702120	#8 XLP 1/C	1,302 FT.
81702130	#8 XLP 1/C	10 FT.
81702150	#2 XLP 1/C	14 FT.
83600200	LIGHT POLE FOUNDATION, 24"	25 FT.
X1400211	LIGHT POLE, SPECIAL, 30'	5 EA.
X8250505	LIGHTING CONTROLLER, SPECIAL	1 EA.

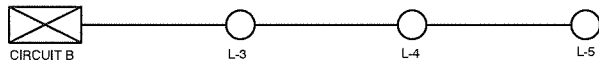
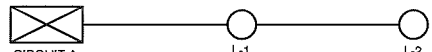
INSTALL LIGHTING CONTROLLER ON 6"x6" TREATED WOOD POST

LIGHTING CONTROLLER, SPECIAL

PROP. SERVICE INSTALLATION, TYPE A (100A) NEMA 4X SS DISCONNECT INSTALLED ON WOOD SERVICE POLE

EXIST. AMEREN SERVICE POLE

1	1 1/2" DIA, PVC	SERVICE
	#2 1/C x2 #6 1/C x1 GROUND	
2	1 1/2" DIA, PVC	LIGHTING
	#8 1/C x2 #8 1/C x1 GROUND	



**OVERHEAD LIGHTING CABLE DIAGRAM**  
LUMINAIRE VOLTAGE SHALL BE 120V

ALL CONDUITS SHALL BE 1 1/2" DIA. PVC.

RRFB CONDUITS AND JUNCTION BOXES SHALL BE ISOLATED FROM 120V LIGHTING CIRCUITS.

RRFB CONTROLLER SHALL BE POWERED FROM A 15A BREAKER INSTALLED INSIDE LIGHTING CONTROLLER.

ALL PEDESTRIAN PUSHBUTTONS SHALL BE HARD WIRED FROM THE RRFB CONTROLLER TO THE RRFB ASSEMBLY USING 3/C #14 CABLE.

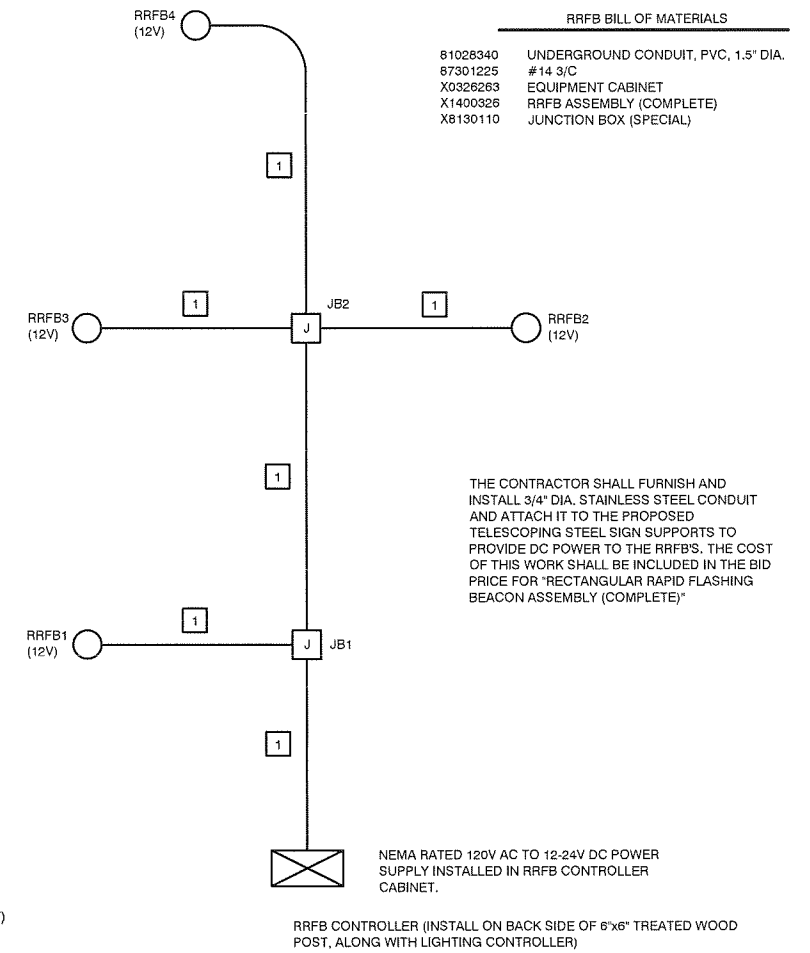
THE RRFB CONTROLLER SHALL BE HOUSED INSIDE THE PROPOSED EQUIPMENT CABINET AND SHALL PROVIDE CENTRAL CONTROL OF ALL RRFB ASSEMBLIES.

UPON ACTIVATION BY PEDESTRIAN PUSH BUTTON, THE RRFB CONTROLLER SHALL ACTIVATE ALL RRFB LIGHT BARS IN THE CROSSWALK SYSTEM SIMULTANEOUSLY. RRFB LIGHT BARS SHALL FLASH SYNCHRONOUSLY AND THEN CEASE OPERATION AFTER A PROGRAMMABLE TIMEOUT.

- 12"x12"x24" COMPOSITE CONCRETE JUNCTION BOX
- #14 3/C x1
- EQUIPMENT CABINET (RRFB CONTROLLER CABINET)

**RRFB BILL OF MATERIALS**

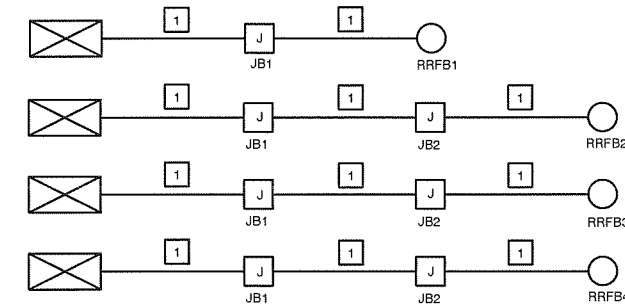
81028340	UNDERGROUND CONDUIT, PVC, 1.5" DIA.	85 FT.
87301225	#14 3/C	242 FT.
X0326263	EQUIPMENT CABINET	1 EA.
X1400326	RRFB ASSEMBLY (COMPLETE)	4 EA.
X8130110	JUNCTION BOX (SPECIAL)	2 EA.



THE CONTRACTOR SHALL FURNISH AND INSTALL 3/4" DIA. STAINLESS STEEL CONDUIT AND ATTACH IT TO THE PROPOSED TELESCOPING STEEL SIGN SUPPORTS TO PROVIDE DC POWER TO THE RRFB'S. THE COST OF THIS WORK SHALL BE INCLUDED IN THE BID PRICE FOR "RECTANGULAR RAPID FLASHING BEACON ASSEMBLY (COMPLETE)"

NEMA RATED 120V AC TO 12-24V DC POWER SUPPLY INSTALLED IN RRFB CONTROLLER CABINET.

RRFB CONTROLLER (INSTALL ON BACK SIDE OF 6"x6" TREATED WOOD POST, ALONG WITH LIGHTING CONTROLLER)



**RRFB CABLE DIAGRAM**  
RRFB OPERATING VOLTAGE SHALL BE 12-24V DC (NOT TO EXCEED 48V PER NEC)

N:\18-422 Dunlap Rte 91 Crossing\DWG\91 - WIRING DIAGRAMS 18-422.dwg Feb 21, 2020

**MOHR & KERR ENGINEERING & LAND SURVEYING, P.C.**  
5901 N. Prospect Road, Suite 6B Peoria, Illinois 61614  
www.mohrandkerr.com

Office: (309) 692-8500  
Fax: (309) 692-8501  
Professional Design Firm #184.005091

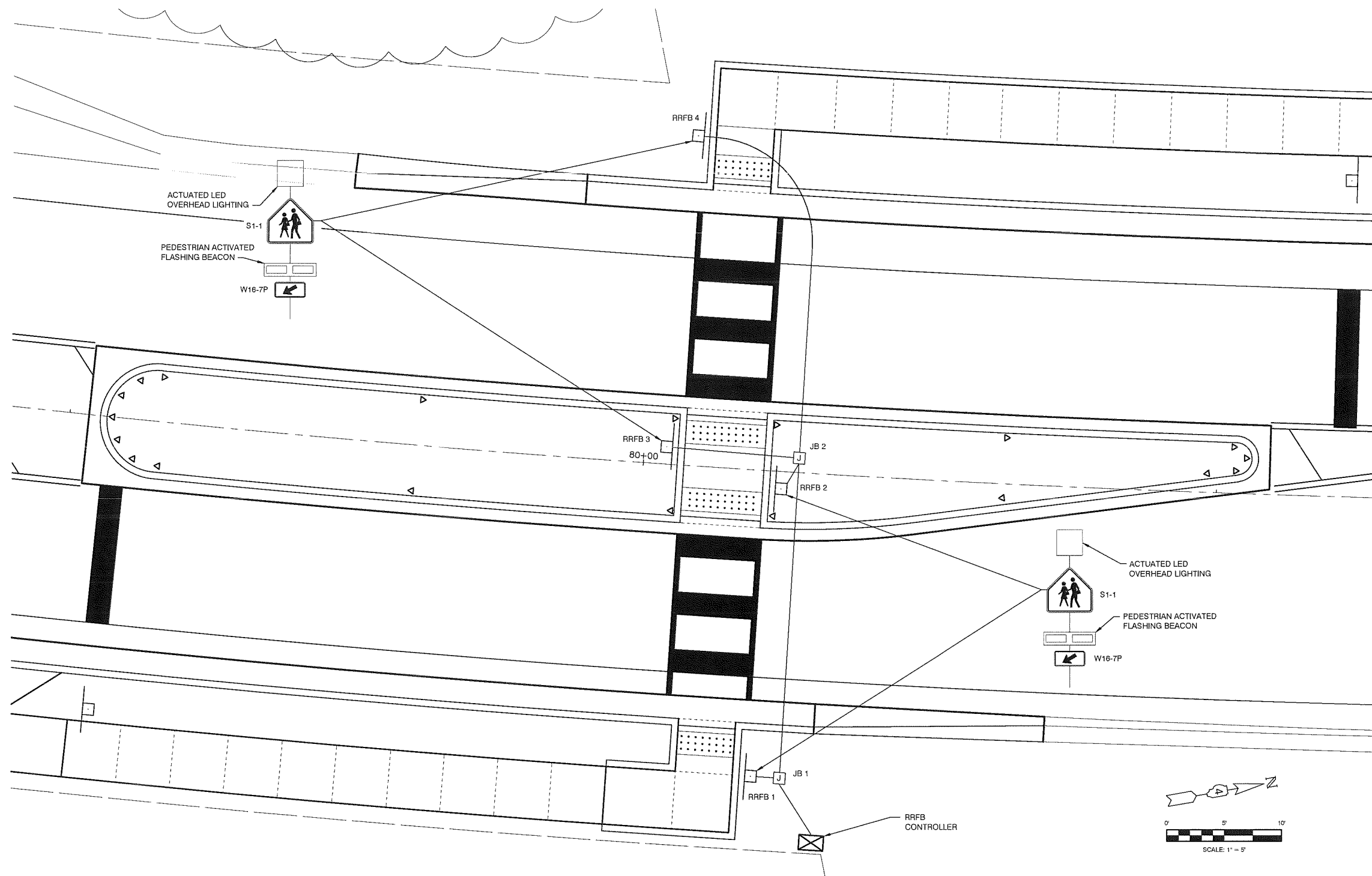
DESIGNED	WFS	REVISED
DRAWN	BWR	REVISED
CHECKED	WFS	REVISED
DATE	02-19-20	REVISED

STATE OF ILLINOIS  
DEPARTMENT OF TRANSPORTATION

S.R.T.S., IL. RTE. 91 CROSSING, DUNLAP, IL  
CABLE DIAGRAMS

SCALE: N.T.S. SHEET NO. 9 OF 10 SHEETS STA. TO STA.

F.A.S. ROUTE	SECTION	COUNTY	TOTAL SHEETS	SHEET NO.
1380	19-00027-00-SW	PEORIA	11	9
CONTRACT NO. 89773				
ILLINOIS FEDERAL ROAD DIST NO.				



R R FL BEACON A COMP	X1400326
LOCATION	QUANTITY
01.50' LT. STA. 80+02.45	1 EA.
28.59' LT. STA. 80+03.39	1 EA.
26.58' RT. STA. 80+10.56	1 EA.
01.49' RT. STA. 80+11.62	1 EA.
<b>PROJECT TOTALS</b>	<b>4 EA.</b>

JUNCTION BOX (SPECIAL)	X8130110
LOCATION	QUANTITY
1.27' LT. STA. 80+13.52	1 EA.
26.62' RT. STA. 80+13.52	1 EA.
<b>PROJECT TOTAL</b>	<b>2 EA.</b>

EQUIPMENT CABINET	X0326263
LOCATION	QUANTITY
32.04' RT. STA. 80+16.52	1 EA.
<b>PROJECT TOTAL</b>	<b>1 EA.</b>

CONDUIT AND ELECTRIC CABLE		UNDRGRD C PVC 1.5"	ELCBL C SIGNAL 14 3C
FROM	TO	81028340	87301225
RRFB CONTR.	JB1	6 FT.	24 FT.
JB1	RRFB1	3 FT.	18 FT.
JB1	JB2	27 FT.	66 FT.
JB2	RRFB2	3 FT.	18 FT.
JB2	RRFB3	12 FT.	36 FT.
JB2	RRFB4	34 FT.	80 FT.
<b>PAGE TOTALS</b>		<b>85 FT.</b>	<b>242 FT.</b>

RRFB LAYOUT PLAN  
SCALE: 1" = 5'

N:\18422 Dunlap Rte 91 Crossing\DWG\10 - RRFB 18-422.dwg Feb. 20, 2020

**M** MOHR & KERR ENGINEERING & LAND SURVEYING, P.C.  
 5901 N. Prospect Road, Suite 6B Office: (309) 692-8500  
 Peoria, Illinois 61614 Fax: (309) 692-8501  
 www.mohrandkerr.com Professional Design Firm #184.005091

DESIGNED	WFS	REVISED
DRAWN	BWR	REVISED
CHECKED	WFS	REVISED
DATE	02-19-20	REVISED

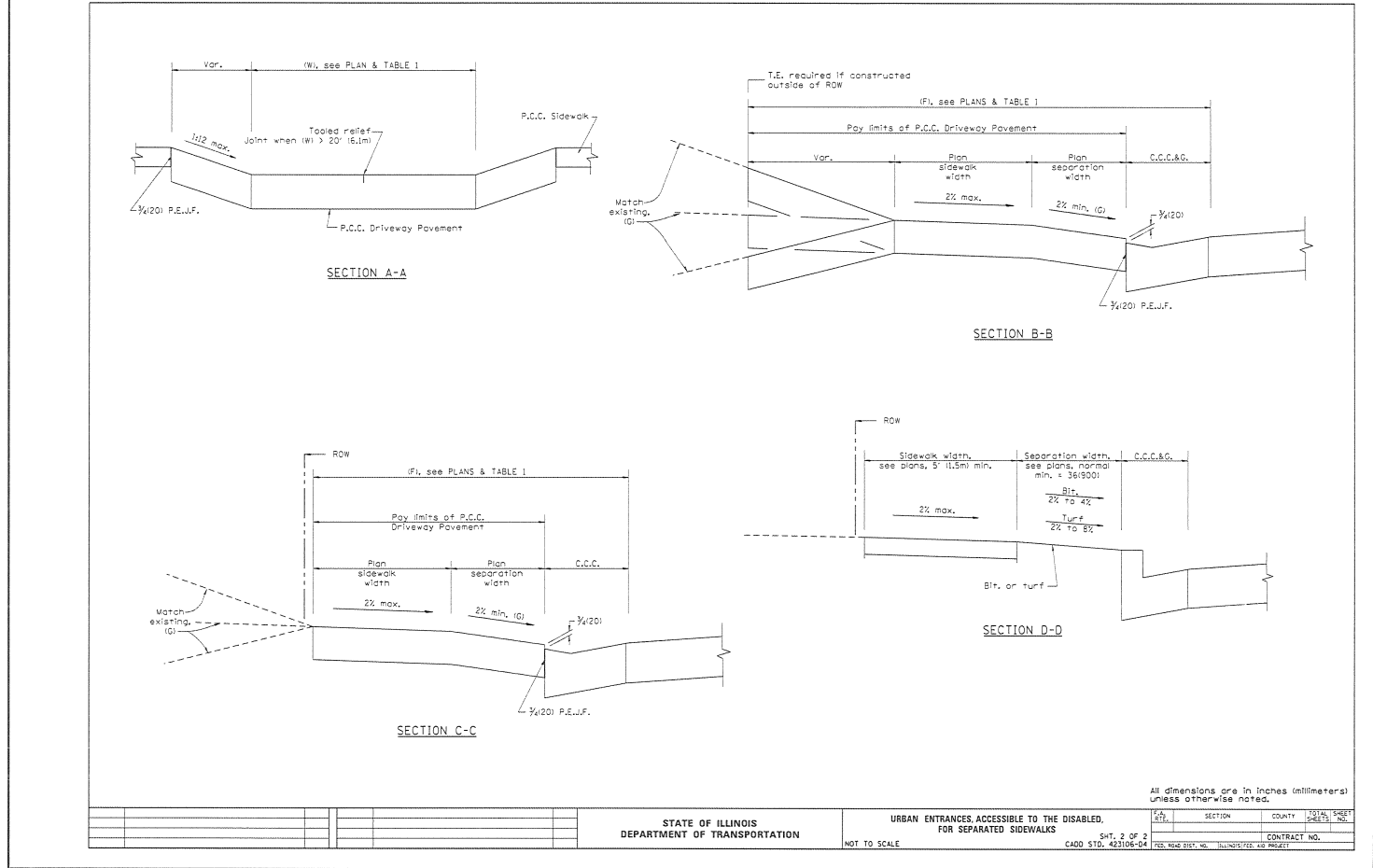
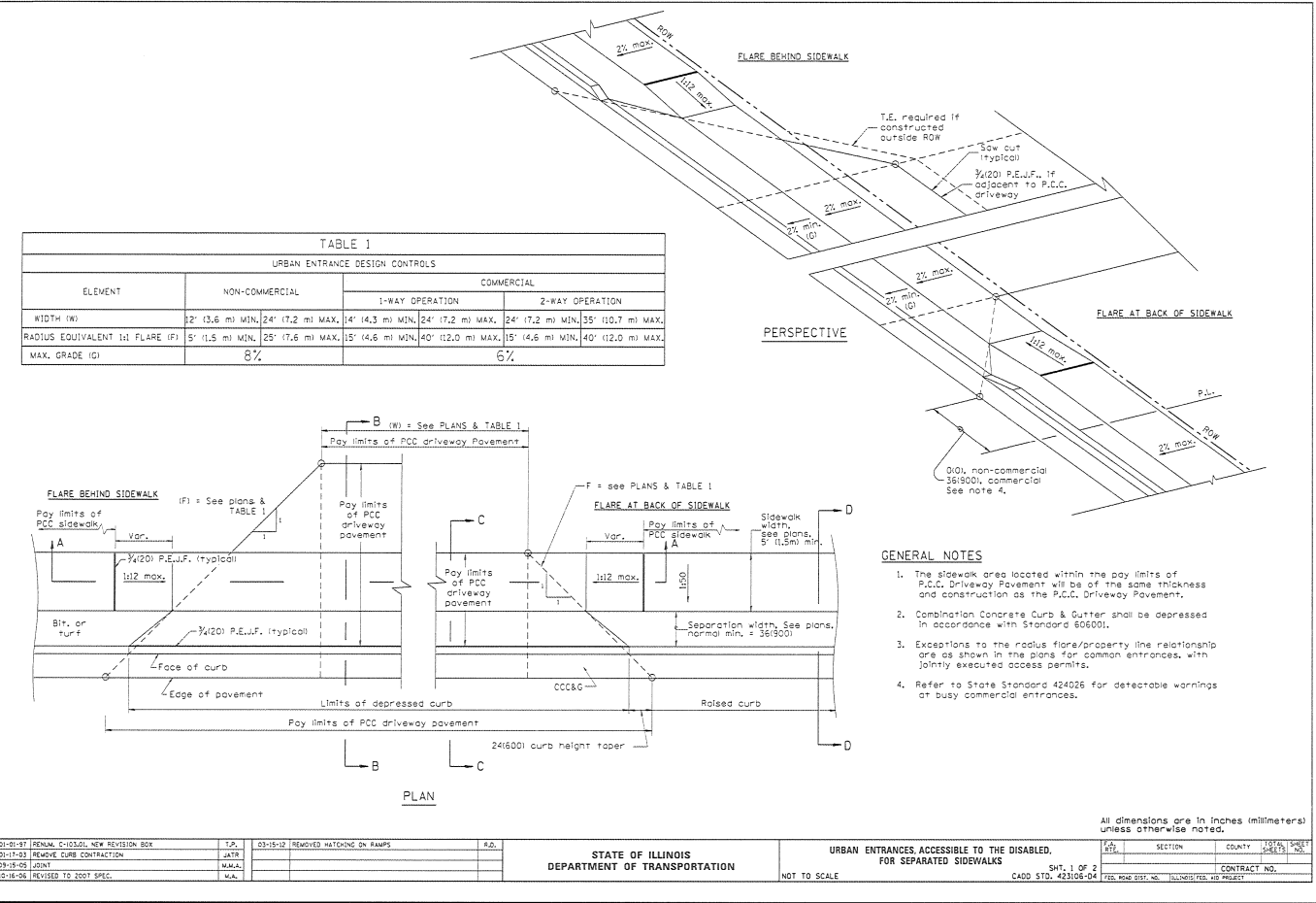
STATE OF ILLINOIS  
DEPARTMENT OF TRANSPORTATION

S.R.T.S., IL. RTE. 91 CROSSING, DUNLAP, IL  
RRFB LAYOUT PLAN

SCALE: 1" = 5' SHEET NO. 10 OF 10 SHEETS STA. 79+50 TO STA. 80+50

F.A.S. ROUTE	SECTION	COUNTY	TOTAL SHEETS	SHEET NO.
1380	19-00027-00-SW	PEORIA	11	10
CONTRACT NO. 89773				
ILLINOIS FEDERAL ROAD DIST NO.				

DESIGNER NOTES:  
 1. DESIGNER SHOULD REVIEW "HANDBOOK FOR THE POLICY ON PERMITS FOR ACCESS DRIVEWAYS TO STATE HIGHWAYS"  
 2. ALL FLARES ARE RECOMMENDED FOR SIDEWALKS WITH NARROW SEPARATIONS.  
 3. STATE STANDARD GOODPRACTICE AND APPLICABLE SIDEWALK STANDARDS SHOULD BE INCLUDED IN THE PLANS TO SUPPLEMENT THIS DRAWING.



N:\18-422 Dunlap Rte 91 Crossing\DWG11 - STANDARDS 18-422.dwg Feb 19, 2020

**M MOHR & KERR ENGINEERING & LAND SURVEYING, P.C.**  
 5901 N. Prospect Road, Suite 6B Office: (309) 692-8500  
 Peoria, Illinois 61614 Fax: (309) 692-8501  
 www.mohrandkerr.com Professional Design Firm #184.005091

DESIGNED	WFS	REVISED	
DRAWN		REVISED	
CHECKED	WFS	REVISED	
DATE	02-19-20	REVISED	

STATE OF ILLINOIS  
 DEPARTMENT OF TRANSPORTATION

S.R.T.S., IL. RTE. 91 CROSSING, DUNLAP, IL  
 URBAN ENTRANCES, ACCESSIBLE TO THE  
 DISABLED, FOR SEPARATED SIDEWALKS  
 SCALE: 1" = 20'  
 SHEET NO. 8 OF 10 SHEETS STA. 25+00 TO STA. 30+50

F.A.S. ROUTE	SECTION	COUNTY	TOTAL SHEETS	SHEET NO.
1380	19-00027-00-SW	PEORIA	11	11
CONTRACT NO. 89773				
ILLINOIS FEDERAL ROAD DIST. NO.				