

04-24-2020 LETTING ITEM 151

STATE OF ILLINOIS
DEPARTMENT OF TRANSPORTATION

**PROPOSED
HIGHWAY PLANS**

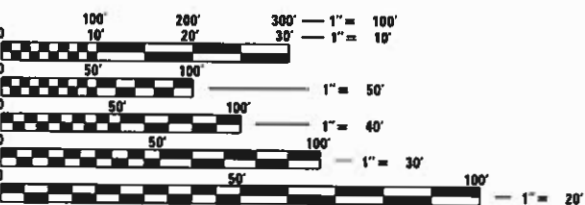
FAS 2495 (JOHN ST)
SECTION 19-00059-00-SW
PROJECT NUMBER V8NG(291)
IL SRTS FUNDING CYCLE 2019
INFRASTRUCTURE PROJECT AWARD
DEWITT COUNTY

C-95-005-20

F.A.S. RTE.	SECTION	COUNTY	TOTAL SHEETS	SHEET NO.
2495	19-00059-00-SW	DEWITT	19	1
		ILLINOIS	CONTRACT NO. 91590	

FOR INDEX OF SHEETS, SEE SHEET NO. 2

PROPOSED IMPROVEMENT: THIS PROJECT CONSISTS OF EXISTING CONCRETE/BRICK SIDEWALK REMOVAL AND REPLACEMENT WITH ADA-COMPLIANT PCC SIDEWALK AND CURB RAMPS.



FULL SIZE PLANS HAVE BEEN PREPARED USING STANDARD ENGINEERING SCALES. REDUCED SIZED PLANS WILL NOT CONFORM TO STANDARD SCALES. IN MAKING MEASUREMENTS ON REDUCED PLANS, THE ABOVE SCALES MAY BE USED.

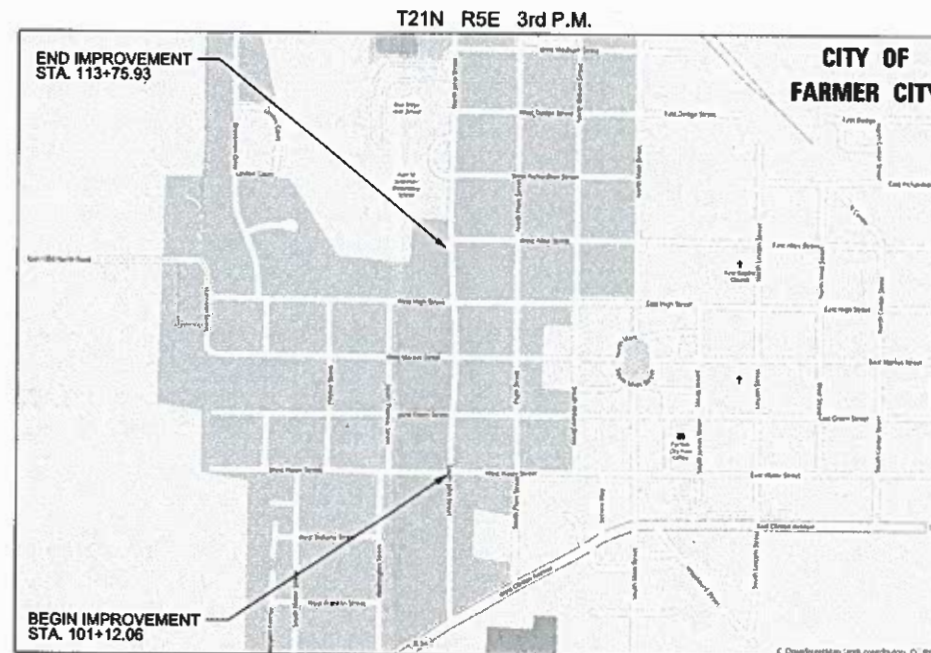
J.U.L.I.E.
JOINT UTILITY LOCATION INFORMATION FOR EXCAVATORS
1-800-892-0123
OR 811

PROJECT ENGINEER JEFF SPILLER
PROJECT MANAGER RICK ANDERSON

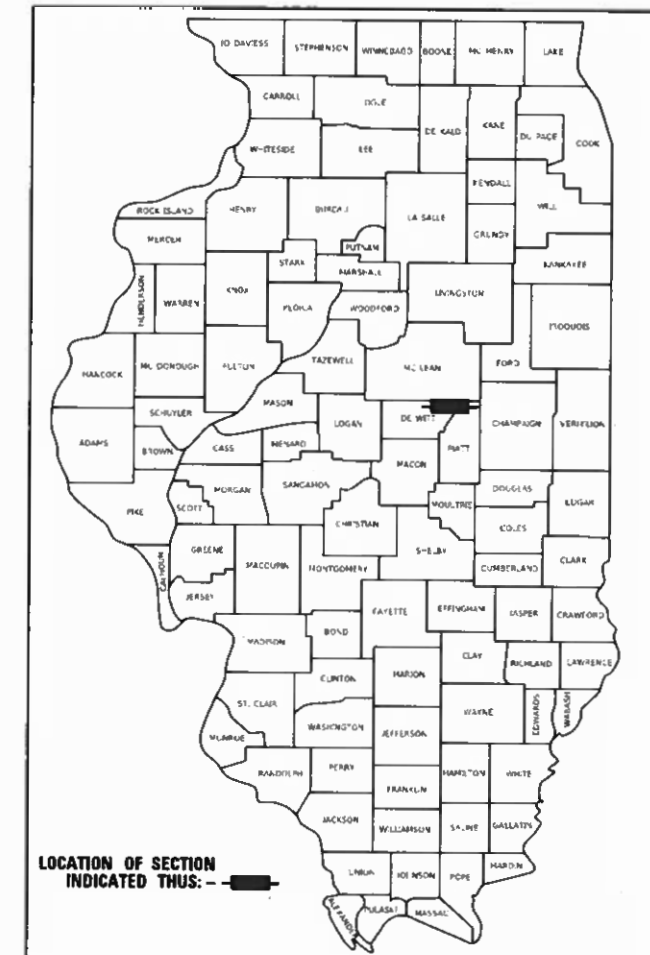
CONTRACT NO. 91590

MAURER-STUTZ
ENGINEERS SURVEYORS

3116 N. DRIES LANE, SUITE 100
PEORIA, ILLINOIS 61604
PH. (309) 693-7615
FAX (309) 693-7616
PROFESSIONAL DESIGN FIRM #184-005754



LOCATION MAP
NOT TO SCALE



ENGINEER'S SIGNATURE BOX

JEFFERY D. SPILLER
069-057630
L
ENG
OF
ILLINOIS
SIGNED February 20, 2020
LICENSE EXP. DATE: 11/30/21

ROADWAY CLASSIFICATION: MAJOR COLLECTOR
WEST WATER STREET TO WEST ALLEN STREET IN FARMER CITY
ADT - 750 (2018)
DESIGN POLICY : URBAN
GROSS LENGTH = 1263.90 FT = .239 MILES
NET LENGTH = 1263.90 FT = .239 MILES
VARIANCES: NONE
COMMITMENTS: NONE

STATE OF ILLINOIS
DEPARTMENT OF TRANSPORTATION
DIVISION OF HIGHWAYS

APPROVED *[Signature]* (date) 2-4-2020
City of Farmer City - City Administrator

PASSED *[Signature]* (date) FEBRUARY 20, 2020
District 5 Engineer of Local Road & Streets

RELEASING FOR BID BASED ON LIMITED REVIEW *[Signature]* (date) February 20, 2020
Region 3 Engineer

PRINTED BY THE AUTHORITY
OF THE STATE OF ILLINOIS

INDEX OF SHEETS

- 1 COVER
- 2 INDEX OF SHEETS, HIGHWAY STANDARDS, GENERAL NOTES AND SUMMARY OF QUANTITIES
- 3 SCHEDULE OF QUANTITIES
- 4 TYPICAL SECTIONS
- 5 ALIGNMENTS, TIES AND BENCHMARKS
- 6 REMOVAL PLAN
- 7-9 PLAN AND PROFILE SHEETS
- 10-11 ADA CURB RAMP DETAILS
- 12 SIDEWALK DETAILS
- 13-19 CROSS SECTION SHEETS

LIST OF STANDARDS

- 000001-07 STANDARD SYMBOLS, ABBREVIATIONS AND PATTERNS
- 001001-02 AREAS OF REINFORCEMENT BARS
- 001006 DECIMAL OF INCH & FOOT
- 280001-07 TEMPORARY EROSION CONTROL SYSTEMS
- 424001-11 PERPENDICULAR CURB RAMPS FOR SIDEWALKS
- 542406-03 METAL FLARED END SECTION FOR PIPE ARCHES
- 602301-04 INLET - TYPE A
- 606001-07 CONCRETE CURB TYPE B AND COMBINATION CONCRETE CURB AND GUTTER
- 701006-05 OFF-RD OPERATIONS, 2L, 2W, 15' (4.5m) TO 24" (600mm) FROM PAVEMENT EDGE
- 701011-04 OFF-RD MOVING OPERATIONS, 2L, 2W, DAY ONLY
- 701301-04 LANE CLOSURE, 2L, 2W, SHORT TIME
- 701501-06 URBAN LANE CLOSURE, 2L, 2W, UNDIVIDED
- 701801-06 SIDEWALK, CORNER OR CROSSWALK CLOSURE
- 701901-08 TRAFFIC CONTROL DEVICES

GENERAL NOTES

THE "STANDARD SPECIFICATIONS FOR ROAD AND BRIDGE CONSTRUCTION," ADOPTED APRIL 1, 2016 AND THE "SUPPLEMENTAL SPECIFICATIONS AND RECURRING SPECIAL PROVISIONS" ADOPTED JANUARY 1, 2019 SHALL GOVERN THE CONSTRUCTION OF THE PROPOSED WORK EXCEPT AS MODIFIED BY THE DRAWINGS.

THE CONTRACTOR SHALL BE RESPONSIBLE FOR HAVING THE UTILITY COMPANIES LOCATE THEIR FACILITIES ON SITE PRIOR TO ANY CONSTRUCTION AND WILL BE HELD RESPONSIBLE FOR THE MAINTENANCE AND PRESERVATION OF THEIR FACILITIES. THE CONTRACTOR SHALL DETERMINE THE EXACT LOCATIONS OF THE UTILITIES. THE CONTRACTOR SHALL CALL J.U.I.E. @ 1-800-892-0123 FOR UTILITY LOCATIONS.

THE CONTRACTOR WILL BE RESPONSIBLE FOR REPAIRS TO ANY UTILITY LINES AND EXISTING IMPROVEMENTS TO REMAIN THAT ARE DAMAGED AS A RESULT OF THE WORK.

ALL EXISTING SURROUNDING AREA AND PROPERTY SHALL BE PROTECTED FROM DAMAGE AND LEFT UNDAMAGED BY THE OPERATION OF THE CONTRACTOR. ANY OF THE SURROUNDING PROPERTY DAMAGED BY THE CONTRACTOR SHALL BE REPAIRED OR REPLACED TO AN EQUAL OR BETTER CONDITION THAN WHAT EXISTED PRIOR TO CONSTRUCTION AT THE CONTRACTOR'S EXPENSE.

ADJUSTMENTS OF PROPOSED GRADES TO MATCH EXISTING ENTRANCES OR OTHER FIELD CONDITIONS MAY BE REQUIRED AS DIRECTED BY THE ENGINEER.

THE CONTRACTOR SHALL FIELD VERIFY ALL DIMENSIONS AND EXISTING CONDITIONS PRIOR TO CONSTRUCTION AND NOTIFY THE ENGINEER OF ANY DISCREPANCY IMMEDIATELY.

THE SUMMARY OF QUANTITIES HAS BEEN PROVIDED FOR THE CONTRACTOR'S REFERENCE. CONTRACTOR IS ALERTED TO THE FACT THAT THESE NUMBERS ARE ESTIMATES AND IT IS RECOMMENDED THAT THE CONTRACTOR VERIFY QUANTITIES PRIOR TO ORDERING MATERIALS.

EXCESS MATERIAL, IF NOT USED FOR OTHER ON-SITE PURPOSES, SHALL BE COMPLETELY REMOVED FROM THE CONSTRUCTION SITE AND DISPOSED OF OFF-SITE BY THE CONTRACTOR.

THE WORK AREA SHALL BE POSITIVELY DRAINED DURING CONSTRUCTION. FINAL GRADES SHALL BE PROTECTED AGAINST DAMAGE FROM EROSION, SEDIMENTATION, AND TRAFFIC.

CONSTRUCTION OPERATIONS SHALL BE CONDUCTED IN SUCH A MANNER THAT EROSION AND WATER POLLUTION WILL BE MINIMIZED.

EROSION CONTROL IS A REQUIREMENT OF THIS PROJECT. THE CONTRACTOR IS RESPONSIBLE FOR OBTAINING ALL REQUIRED PERMITS. ANY FINES OR PENALTIES LEVIED AGAINST THIS PROJECT FOR NONCOMPLIANCE WILL BE BORNE SOLELY BY THE CONTRACTOR.

PERIMETER EROSION BARRIER, INLET FILTERS, AND OTHER EROSION CONTROL ITEMS SHALL BE INSPECTED BY THE CONTRACTOR AFTER EACH RAIN EVENT AND REPAIRS SHALL BE MADE BY THE CONTRACTOR AS NEEDED.

ALL ELEVATIONS SHOWN ON THE PLANS ARE BASED ON N.A.V.D. 88.

EARTH EXCAVATION AND BACKFILL SHALL BE INCLUDED IN THE UNIT COST OF THE VARIOUS PROPOSED ITEMS.

GRADING SHALL BE DONE BY HAND AROUND LIGHT POLES, SIGN POSTS, SHRUBS, TREES OR OTHER NATURAL OR MAN-MADE OBJECTS WHERE SHALLOW FILLS OR CUTS ARE ADJACENT TO THE ITEMS. BETWEEN THE PROPOSED SIDEWALK AND THE EXISTING BACK OF CURB OR EDGE OF PAVEMENT, THIS WORK WILL NOT BE PAID FOR SEPARATELY, BUT SHALL BE CONSIDERED INCLUDED IN THE CONTRACT UNIT PRICE PER SQUARE YARD FOR TOPSOIL FURNISH AND PLACE, 4" AND NO ADDITIONAL COMPENSATION WILL BE ALLOWED.

THE EXISTING YIELD SIGN IN THE SOUTHWEST QUADRANT OF THE JOHN STREET AND W GREEN STREET INTERSECTION IS TO BE RELOCATED WEST ON GREEN STREET OUTSIDE OF THE PROPOSED SIDEWALK AS DIRECTED BY THE ENGINEER. THIS WORK WILL NOT BE PAID FOR SEPARATELY BUT SHALL BE INCLUDED IN THE UNIT COST OF THE VARIOUS REMOVAL ITEMS.

ITEM CODE	ROADWAY ITEM	UNIT	CONST CODE	TOTAL QUANTITY	100% STATE
21101615	TOPSOIL FURNISH AND PLACE, 4"	SQ YD	1004	1004	
25000110	SEEDING, CLASS 1A	ACRE	0.25	0.25	
25000400	NITROGEN FERTILIZER NUTRIENT	POUND	23	23	
25000500	PHOSPHORUS FERTILIZER NUTRIENT	POUND	23	23	
25000600	POTASSIUM FERTILIZER NUTRIENT	POUND	23	23	
25100105	MULCH, METHOD 1	ACRE	0.25	0.25	
28000500	INLET AND PIPE PROTECTION	EACH	5	5	
28000510	INLET FILTERS	EACH	3	3	
42300200	PORTLAND CEMENT CONCRETE DRIVEWAY PAVEMENT, 6 INCH	SQ YD	247	247	
42400100	PORTLAND CEMENT CONCRETE SIDEWALK 4 INCH	SQ FT	5104	5104	
42400300	PORTLAND CEMENT CONCRETE SIDEWALK 6 INCH	SQ FT	531	531	
42400800	DETECTABLE WARNINGS	SQ FT	142	142	
44000200	DRIVEWAY PAVEMENT REMOVAL	SQ YD	86	86	
44000500	COMBINATION CURB AND GUTTER REMOVAL	FOOT	64	64	
44000600	SIDEWALK REMOVAL	SQ FT	4439	4439	
44201329	CLASS C PATCHES, TYPE II, 8 INCH	SQ YD	63	63	
50105220	PIPE CULVERT REMOVAL	FOOT	49	49	
50800205	REINFORCEMENT BARS, EPOXY COATED	POUND	63	63	
542C5470	PIPE CULVERTS, CLASS C, TYPE 1 EQUIVALENT ROUND-SIZE 15"	FOOT	44	44	
54262815	METAL FLARED END SECTIONS, EQUIVALENT ROUND-SIZE 15"	EACH	2	2	
60235700	INLETS, TYPE A, TYPE 3 FRAME AND GRATE	EACH	2	2	
60500060	REMOVING INLETS	EACH	2	2	
60604400	COMBINATION CONCRETE CURB AND GUTTER, TYPE B-6.18	FOOT	90	90	
67100100	MOBILIZATION	L SUM	1	1	
X2200020	FENCE REMOVAL AND REINSTALLATION	FOOT	28	28	
X4240420	PORTLAND CEMENT CONCRETE SIDEWALK 4 INCH, SPECIAL	SQ FT	144	144	
X7010216	TRAFFIC CONTROL AND PROTECTION, (SPECIAL)	L SUM	1	1	
Z0013798	CONSTRUCTION LAYOUT	L SUM	1	1	

Δ

Δ SPECIALTY ITEMS

MODEL: D:\pilot\19-00059\19-00059-SW.dwg FILE NAME: 19-00059-SW.dwg USER: WLL DATE: 2/25/2020

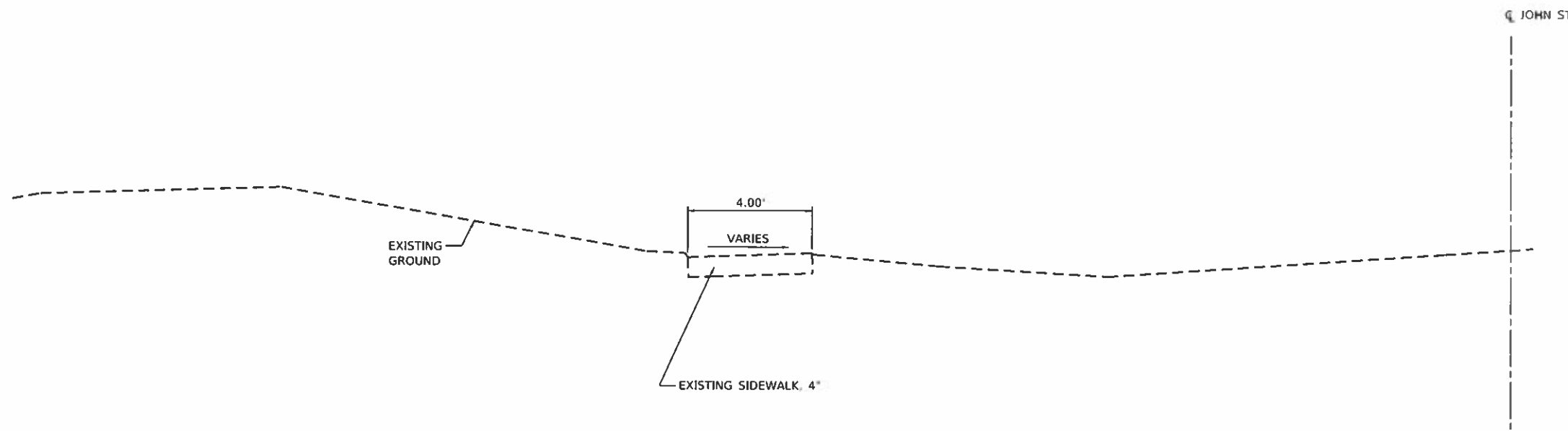


USER NAME = wllewis	DESIGNED - CLD	REVISED -
PLOT SCALE = 2.0000' / in.	DRAWN - WLL	REVISED -
PLOT DATE = 2/25/2020	CHECKED - JDS	REVISED -
	DATE -	REVISED -

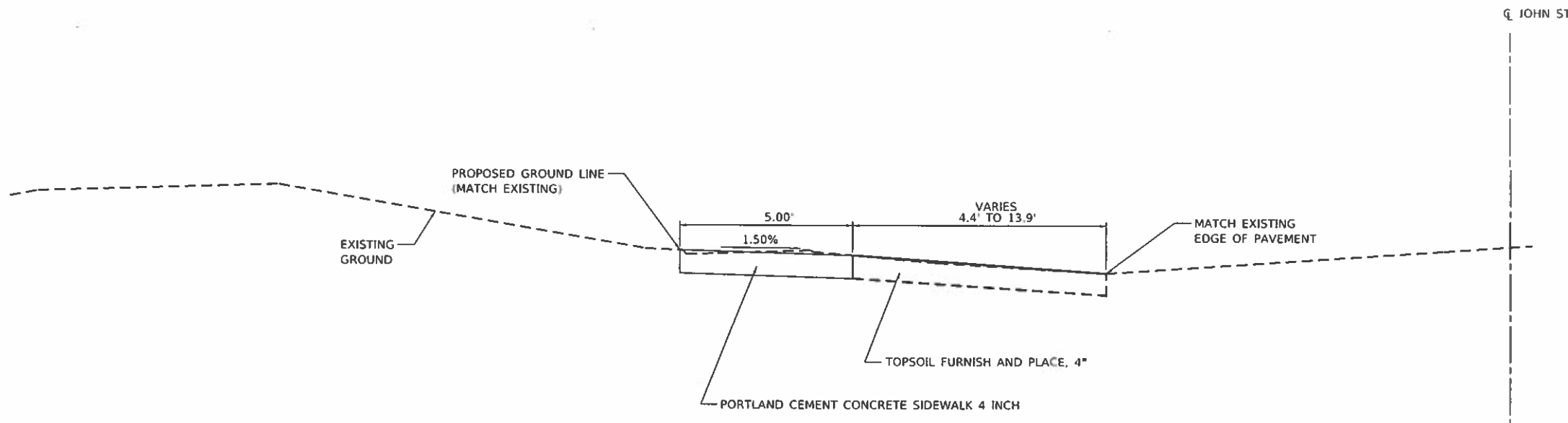
CITY OF FARMER CITY

JOHN STREET SRTS IMPROVEMENTS	
INDEX OF SHEETS, HIGHWAY STANDARDS, GENERAL NOTES, SUMMARY	
SCALE:	SHEET OF SHEETS STA. TO STA.

F.A.S. RTE.	SECTION	COUNTY	TOTAL SHEETS	SHEET NO.
2495	19-00059-00-SW	DEWITT	19	2
CONTRACT NO. 91590				
ILLINOIS FED. AID PROJECT				



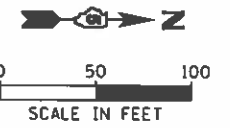
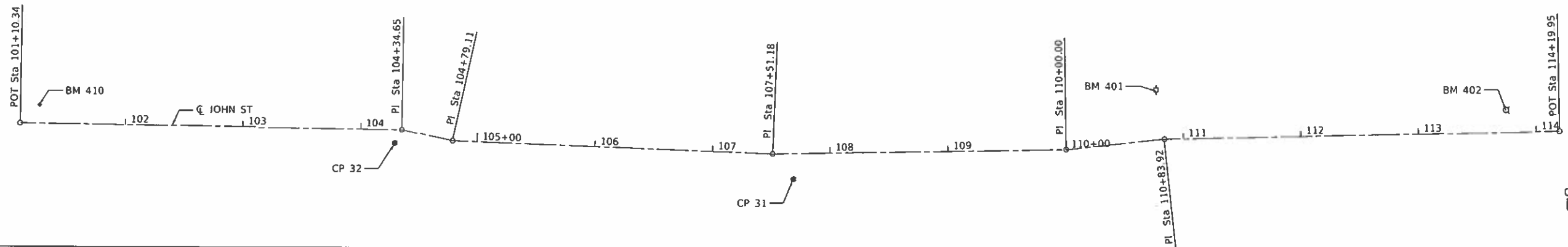
EXISTING TYPICAL SECTION
 STA. 101+12.06 TO STA. 113+75.93



PROPOSED TYPICAL SECTION
 STA. 101+12.06 TO STA. 113+75.93

MODEL: Default
 FILE NAME: S:\23702019\23719013.00 Farmer City_SRTS.ph -H:\CAD\CADD Sheets\DS19015-stc-typical.dgn

MAURER-STUTZ ENGINEERS SURVEYORS	USER NAME = bmwagenoft	DESIGNED - CLD	REVISED -	CITY OF FARMER CITY	JOHN STREET SRTS IMPROVEMENTS TYPICAL SECTIONS			F.A.S. RTE.	SECTION	COUNTY	TOTAL SHEETS	SHEET NO.
	PLOT SCALE = 4.0000' / in.	DRAWN - WLL	REVISED -					2495	19-00059-00-SW	DEWITT	19	4
	PLOT DATE = 1/30/2020	CHECKED - JDS	REVISED -					CONTRACT NO. 91590				
	DATE -	REVISED -		SCALE:	SHEET	OF	SHEETS	STA.	TO STA.	ILLINOIS FED. AID PROJECT		



1 DESCRIBE CHAIN RDEXCL

Chain RDEXCL contains:

RDEXCL1 RDEXCL3 RDEXCL5 RDEXCL7 RDEXCL9 RDEXCL11
RDEXCL12
Beginning chain RDEXCL description

Feature: Geom_Ex_Centerline

Point RDEXCL1 X 896,937.2250 Y 1,302,368.2670 Sta 101+10.3412
Course from RDEXCL1 to RDEXCL3 0° 43' 10.0318" Dist 324.3111

Point RDEXCL3 X 896,941.2972 Y 1,302,692.5526 Sta 104+34.6523
Course from RDEXCL3 to RDEXCL5 12° 29' 04.9105" Dist 44.4575

Point RDEXCL5 X 896,950.9080 Y 1,302,735.9588 Sta 104+79.1098
Course from RDEXCL5 to RDEXCL7 2° 10' 49.5220" Dist 272.0654

Point RDEXCL7 X 896,961.2591 Y 1,303,007.8272 Sta 107+51.1751
Course from RDEXCL7 to RDEXCL9 359° 02' 33.2282" Dist 248.8249

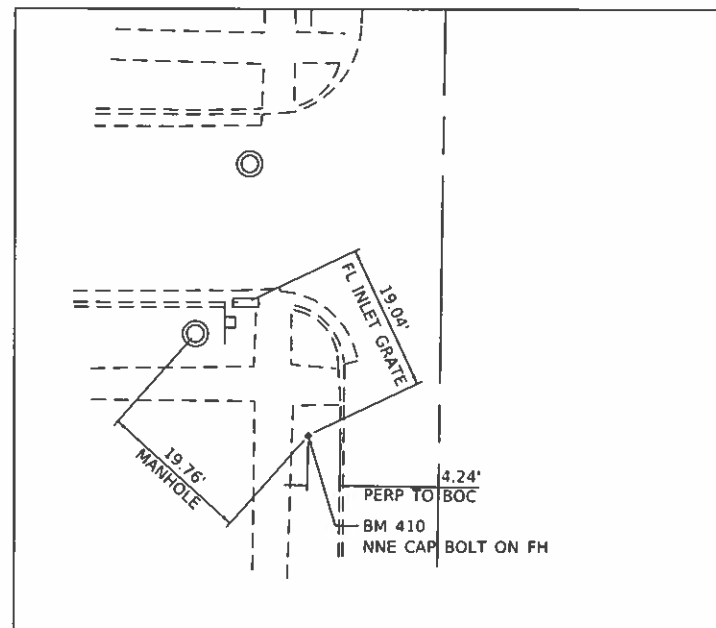
Point RDEXCL9 X 896,957.1013 Y 1,303,256.6173 Sta 110+00.0000
Course from RDEXCL9 to RDEXCL11 353° 42' 58.6396" Dist 83.9208

Point RDEXCL11 X 896,947.9160 Y 1,303,340.0339 Sta 110+83.9208
Course from RDEXCL11 to RDEXCL12 358° 42' 01.4379" Dist 335.0243

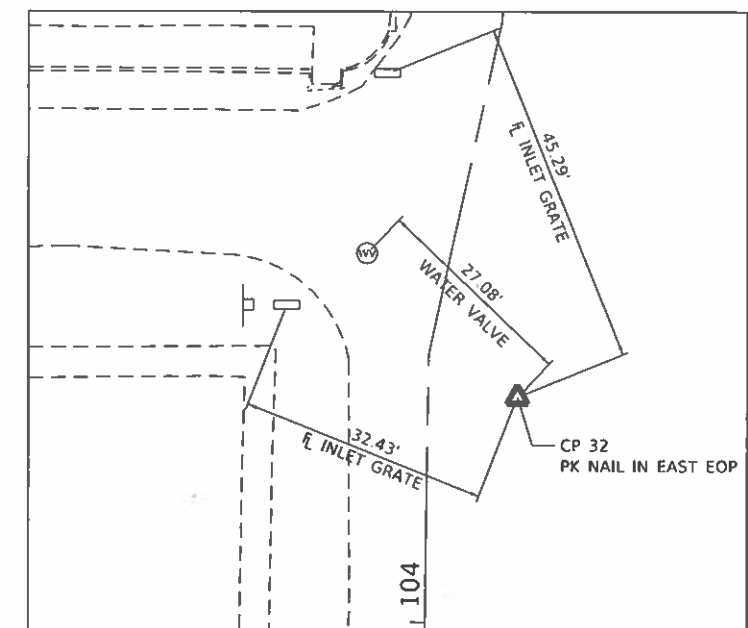
Point RDEXCL12 X 896,940.2949 Y 1,303,675.9718 Sta 114+19.9451
Ending chain RDEXCL description

HORIZONTAL CONTROL POINTS						
POINT #	NORTHING	EASTING	CHAIN	STATION	OFFSET	DESCRIPTION
31	1303025.45	896982.35	RDEXCL	104+29.38	11.69' RT	PK NAIL IN EAST EOP
32	1302687.13	896952.84	RDEXCL	107+68.44	21.42' RT	PK NAIL IN EAST EOP

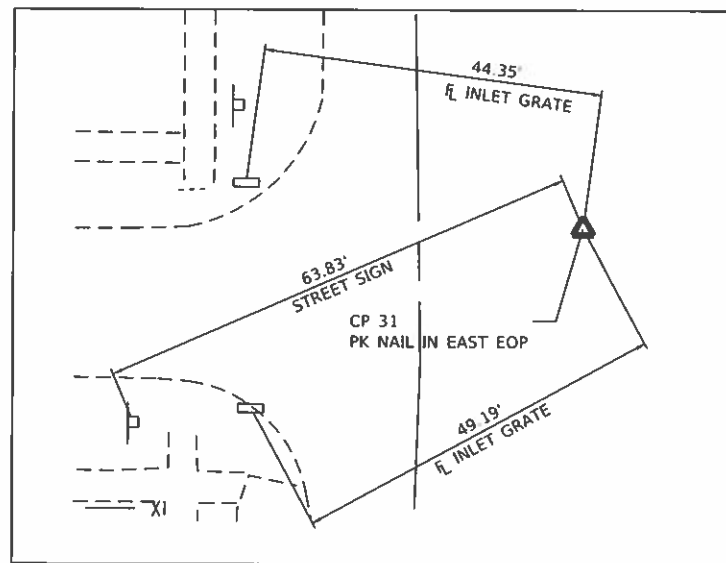
BENCHMARK				
DESIGNATION	ELEVATION	NORTHING	EASTING	STATION DESCRIPTION
410	724.29	1302385	896920	NE CAP BOLT ON FH
401	716.53	1303332	896905	RR SPIKE IN POWER POLE
402	719.13	1303631	896921	SE FLANGE BOLT ON FH



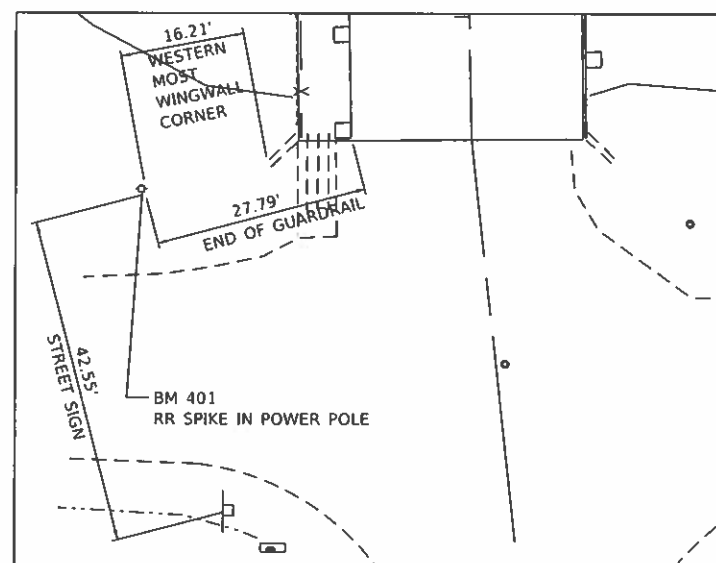
BM 410



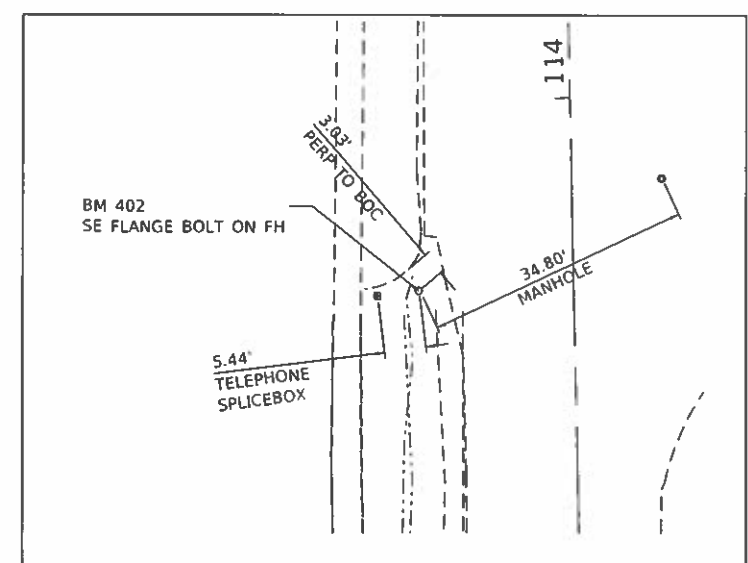
CP 32



CP 31



BM 401



BM 402

MODEL: Default
FILE NAME: S:\2312019\2312019\15.00 Farmer_City_SRTS.mxd
H:\CAD\CADD_S\SS\SS\19015\19015-PL-ATB_Alignment.dgn

MAURER-STUTZ
ENGINEERS SURVEYORS

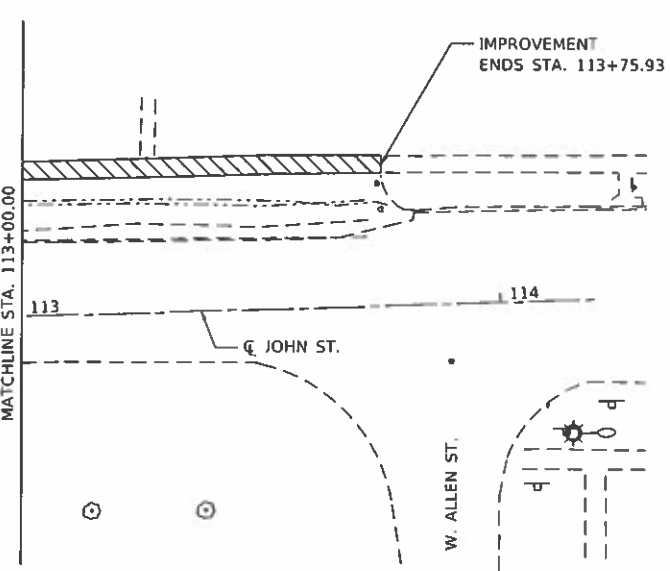
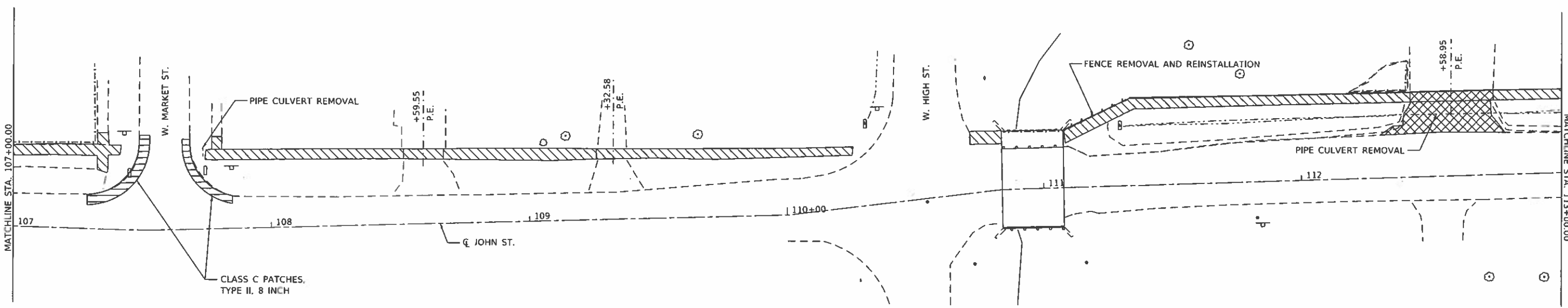
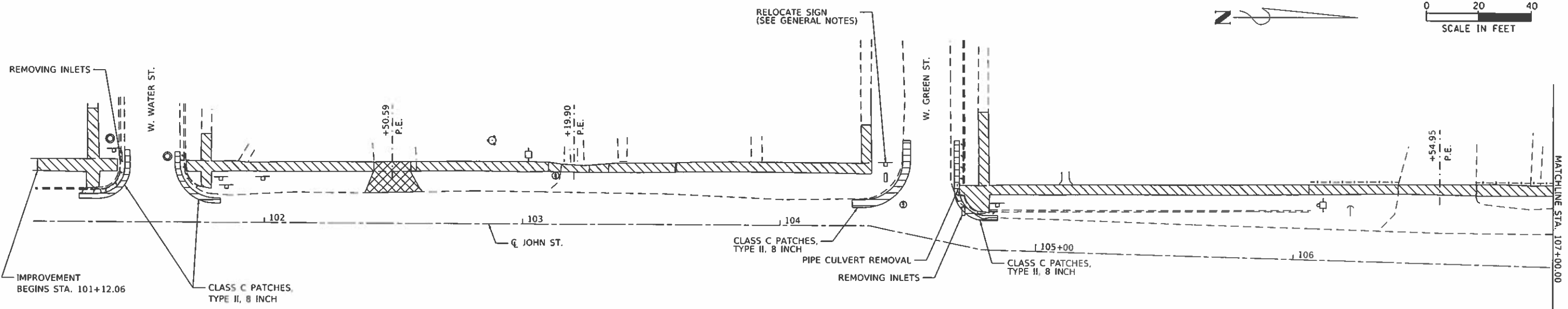
USER NAME = bmwagner	DESIGNED = CLD	REVISED =
PLOT SCALE = 100,0000 1/16"	DRAWN = WLL	REVISED =
PLOT DATE = 1/30/2020	CHECKED = JDS	REVISED =
	DATE =	REVISED =

CITY OF FARMER CITY

**JOHN STREET SRTS IMPROVEMENTS
ALIGNMENTS, TIES AND BENCHMARKS**

F.A.S. RTE. 2495	SECTION 19-00059-00-SW	COUNTY DEWITT	TOTAL SHEETS 19	SHEET NO. 5
CONTRACT NO. 91590				
ILLINOIS FED. AID PROJECT				

SCALE: SHEET OF SHEETS STA. TO STA.



LEGEND

- SIDEWALK REMOVAL
- DRIVEWAY PAVEMENT REMOVAL
- COMBINATION CURB AND GUTTER REMOVAL

MODEL: D:\p\m\...
 FILE NAME: S:\31702019\23719015_00_Farmer_City_SRTS_Plan_1113+00+00_Sheets\19015-Plan_Removal.dwg

MAURER-STUTZ
ENGINEERS SURVEYORS

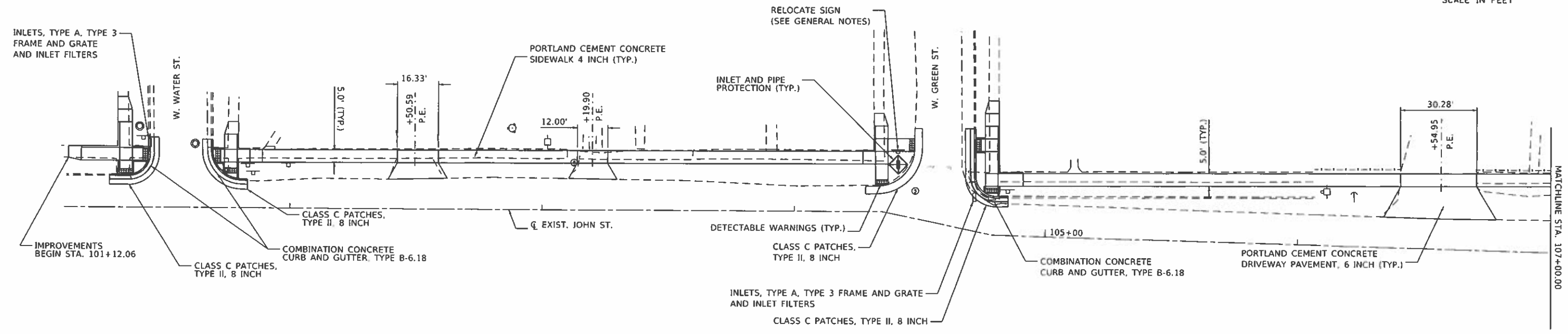
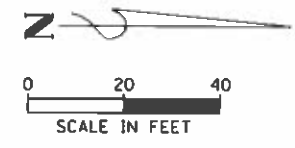
USER NAME = bwwage\loft	DESIGNED - CLD	REVISED -
PLOT SCALE = 40,0000' / 1"	DRAWN - WLL	REVISED -
PLOT DATE = 1/31/2020	CHECKED - JDS	REVISED -
	DATE -	REVISED -

CITY OF FARMER CITY

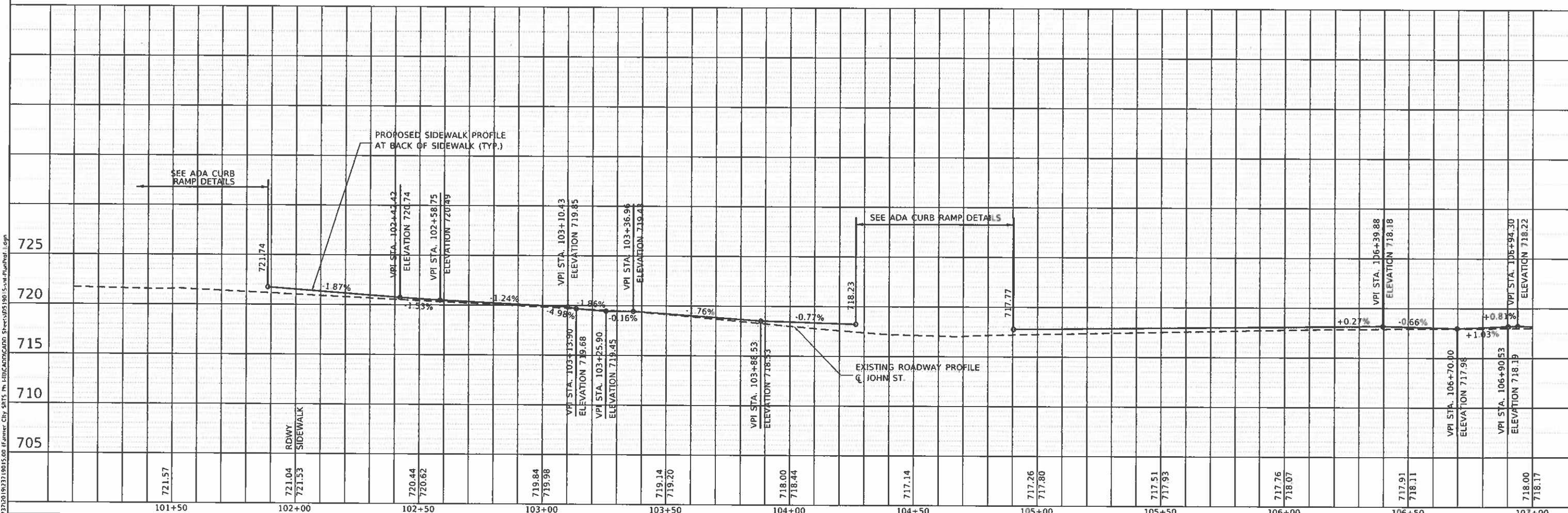
**JOHN STREET SRTS IMPROVEMENTS
REMOVAL PLAN**

SCALE SHEET 1 OF 3 SHEETS STA. TO STA.

F.A.S. RTE. 2495	SECTION 19-00059-00-SW	COUNTY DEWITT	TOTAL SHEETS 19	SHEET NO. 6
CONTRACT NO. 91590				
ILLINOIS FED. AID PROJECT				

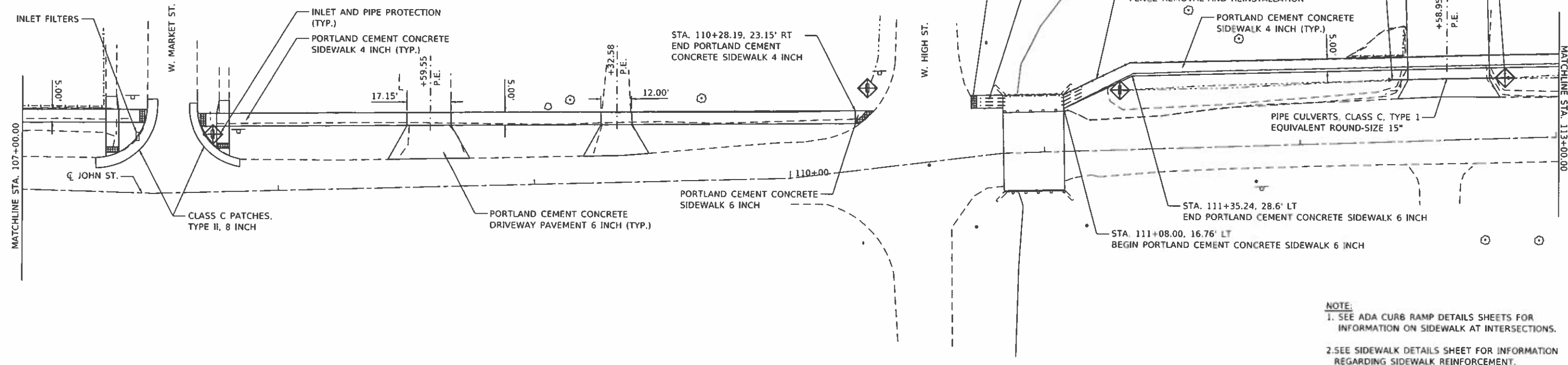
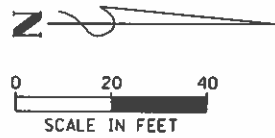


NOTE:
SEE ADA CURB RAMP DETAILS SHEETS FOR INFORMATION ON SIDEWALK AT INTERSECTIONS.

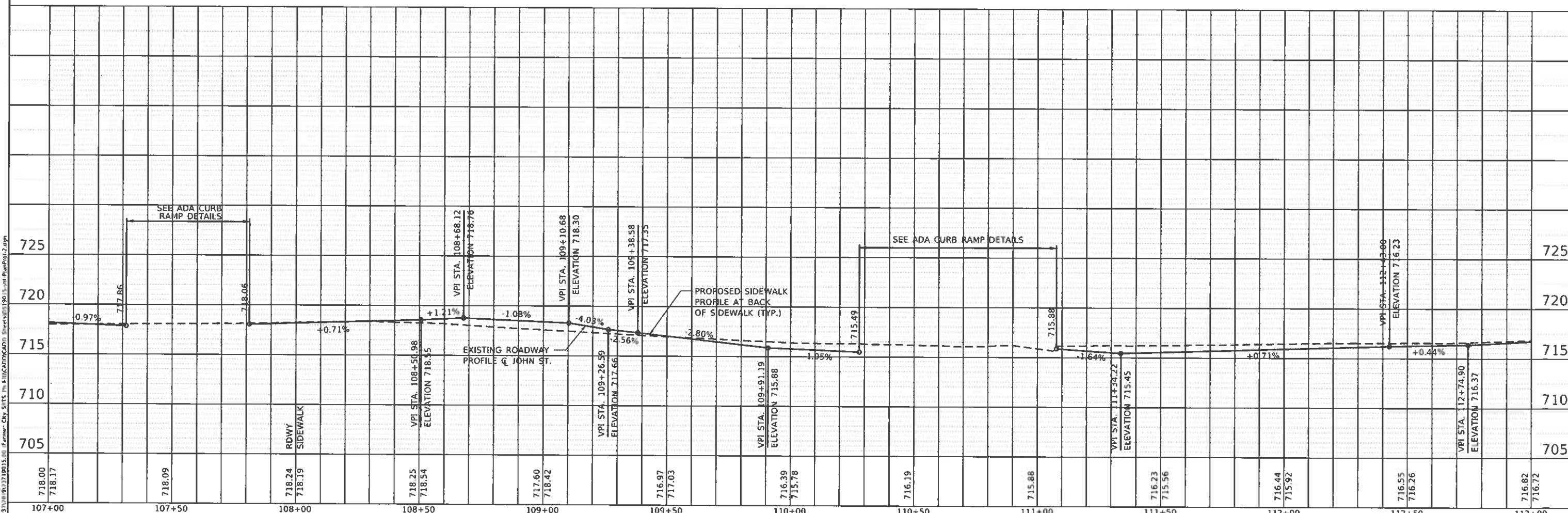


MDPRI: D:\p\2020\19231\19015.dwg Farmer City SRTS Ph. 11/10/2020 10:50:50 AM Sheet: 19 of 19
 User: bmwagner

	USER NAME = bmwagner	DESIGNED - CLD	REVISED -	CITY OF FARMER CITY	JOHN STREET SRTS IMPROVEMENTS PLAN AND PROFILE	F.A.S. RITE = 2495	SECTION = 19-00039-00-SW	COUNTY = DEWITT	TOTAL SHEETS = 19	SHEET NO. = 7
	PLOT SCALE = 48,0000' / 1"	CHECKED - JDS	REVISED -			SCALE: SHEET 1 OF 3 SHEETS STA. TO STA.	CONTRACT NO. 91590			ILLINOIS FED. AID PROJECT
	PLOT DATE = 1/30/2020	DATE -	REVISED -							



NOTE:
 1. SEE ADA CURB RAMP DETAILS SHEETS FOR INFORMATION ON SIDEWALK AT INTERSECTIONS.
 2. SEE SIDEWALK DETAILS SHEET FOR INFORMATION REGARDING SIDEWALK REINFORCEMENT.



MDP: Detail
 P/E: JMS
 3/31/2020 9:32:00 AM Farmer City STS - H:\CADD\CD\Projects\91590-19-11-Plan\Plan2.dgn

718.00 718.17	718.09	718.24 718.19	718.25 718.54	717.60 718.42	716.97 717.03	716.39 715.78	716.19	715.88	716.23 715.96	716.44 715.92	716.55 716.26	716.82 716.72
107+00	107+50	108+00	108+50	109+00	109+50	110+00	110+50	111+00	111+50	112+00	112+50	113+00

MAURER-STUTZ
 ENGINEERS SURVEYORS

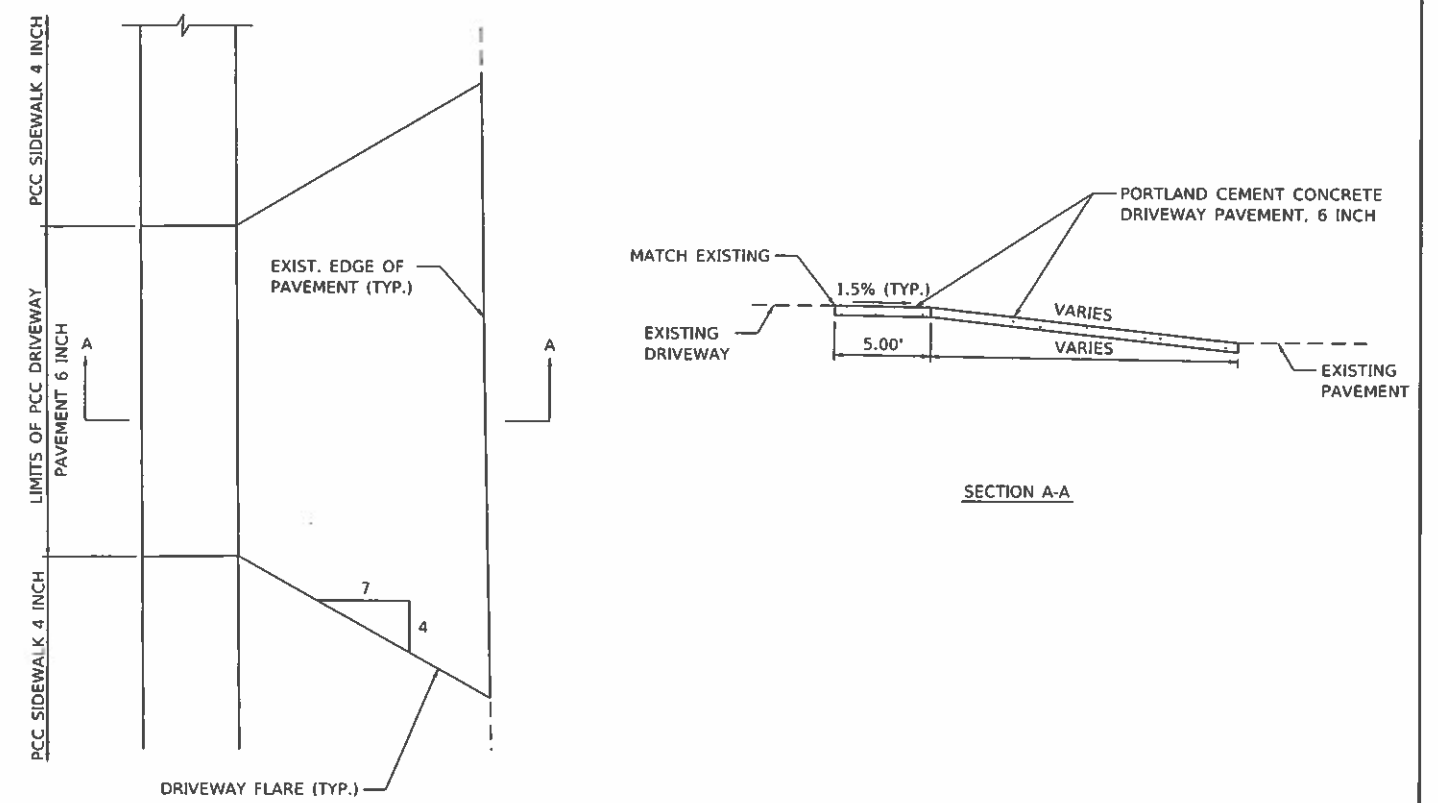
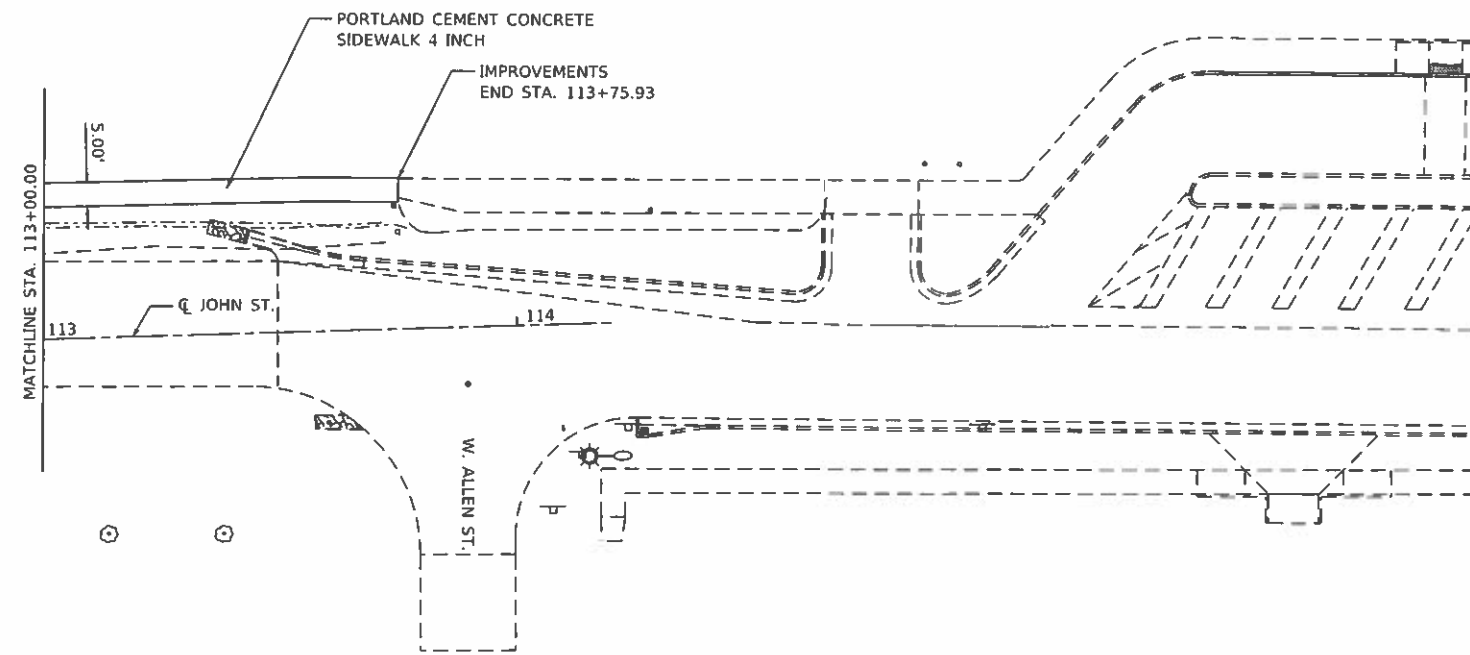
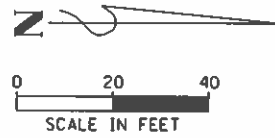
USER NAME = jmwagner	DESIGNED - CLD	REVISED -
PLOT SCALE = 40,0000' / 1"	DRAWN - WLL	REVISED -
PLOT DATE = 3/30/2020	CHECKED - JDS	REVISED -
	DATE -	REVISED -

CITY OF FARMER CITY

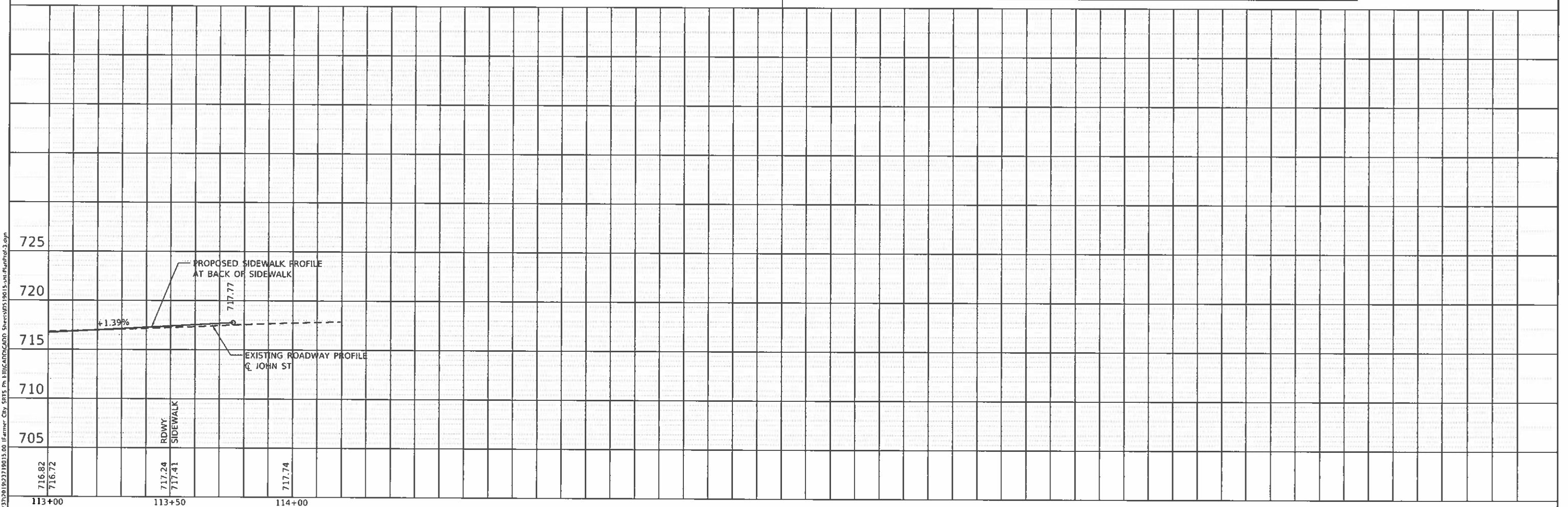
**JOHN STREET SRTS IMPROVEMENTS
 PLAN AND PROFILE**

SCALE: SHEET 2 OF 3 SHEETS STA. TO STA.

F.A.S. RATE	SECTION	COUNTY	TOTAL SHEETS	SHEET NO.
2495	19-00059-00-SW	DEWITT	19	8
CONTRACT NO. 91590			ILLINOIS FED. AID PROJECT	



PORTLAND CEMENT CONCRETE DRIVEWAY PAVEMENT, 6 INCH DETAIL

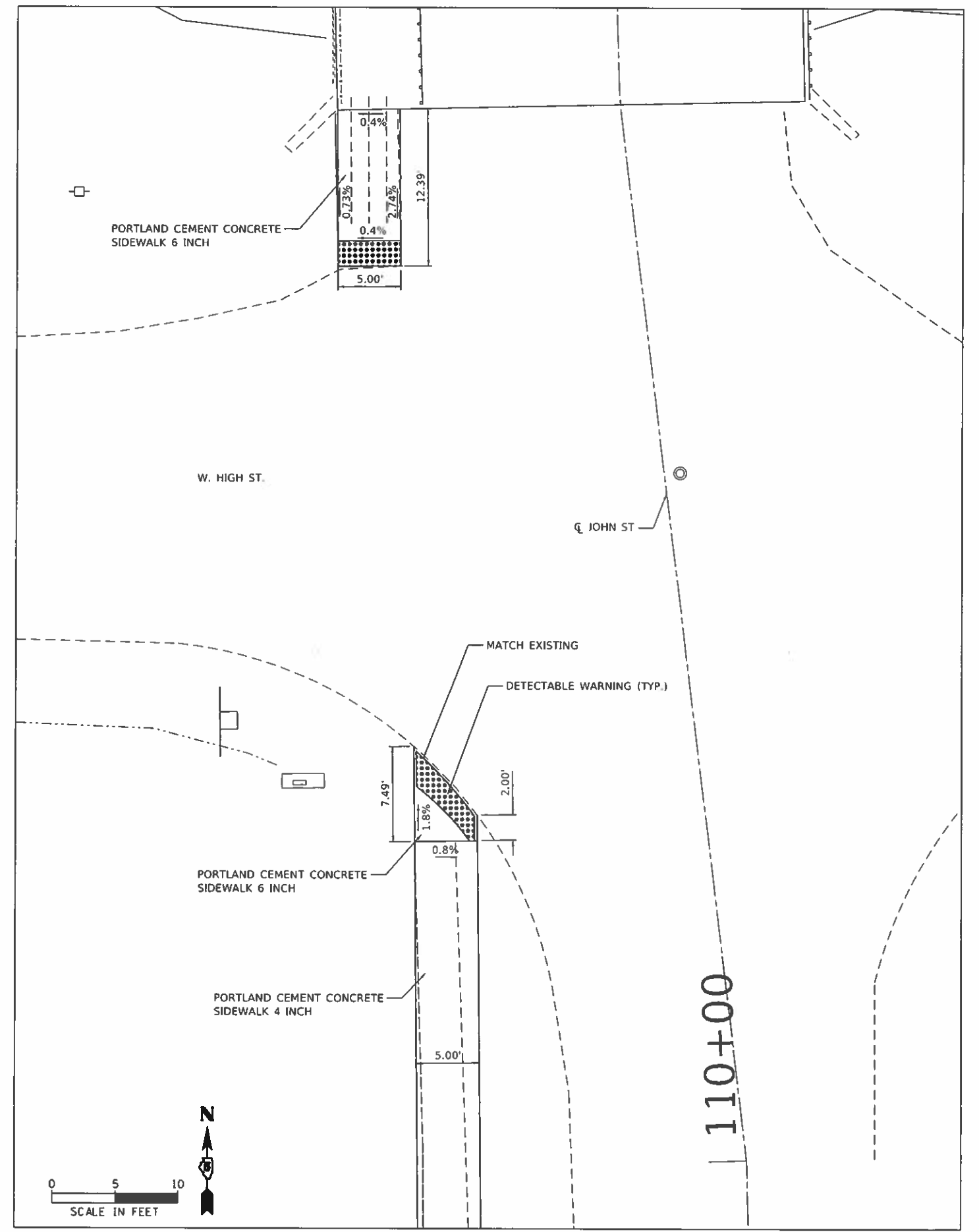
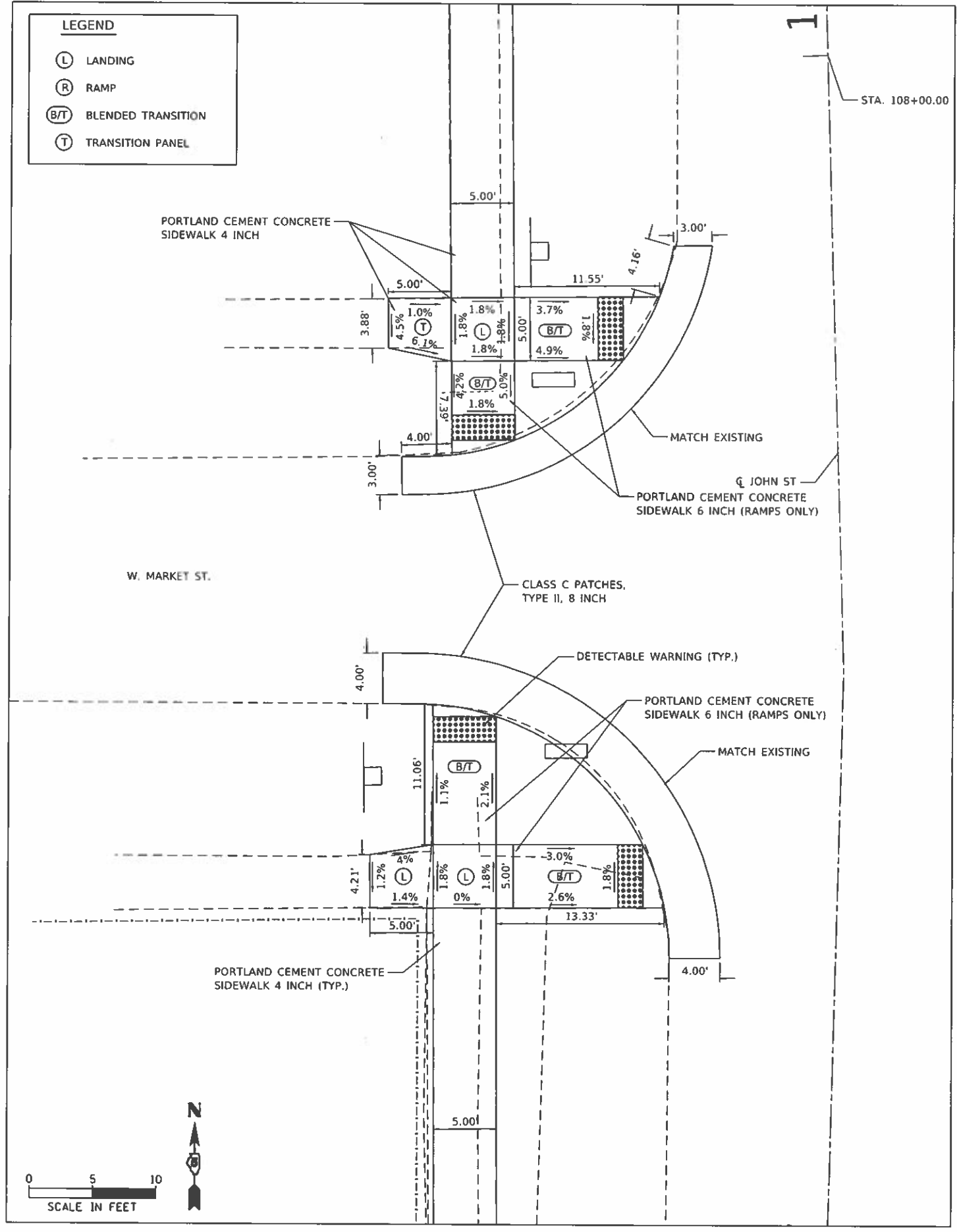


MGR1: Detail
 PLOT NUMBER: S:\313020\192319013.00\Farmer City SRTS Ph. ILLICAD\19CAD_Sheets\19013_SidePlanProf3.dwg

	USER NAME = bmwagehoff	DESIGNED - CLD	REVISED -	CITY OF FARMER CITY	JOHN STREET SRTS IMPROVEMENTS PLAN AND PROFILE		F.A.S. RTE. 2495	SECTION 19-00059-00-SW	COUNTY DEWITT	TOTAL SHEETS 19	SHEET NO. 9
	PLOT SCALE = 40.0000' / in.	DRAWN - WLL	REVISED -				CONTRACT NO. 91590				
	PLOT DATE = 1/30/2020	CHECKED - JDS	REVISED -	SCALE: SHEET 3 OF 3 SHEETS STA. TO STA.		ILLINOIS FED. AID PROJECT					

LEGEND

- (L) LANDING
- (R) RAMP
- (B/T) BLENDED TRANSITION
- (T) TRANSITION PANEL



MODEL: Default
 FILE NAME: S:\2370192\23719015.00 (Farmer City SRIS Ph 1)101CAD\CADD Sheets\23719015-sr-ADA-2.dgn

MAURER-STUTZ
ENGINEERS SURVEYORS

USER NAME = bmwagert
 PLOT SCALE = 1/8" = 10.0000' / 1"
 PLOT DATE = 1/30/2020

DESIGNED - CLD
 DRAWN - WLL
 CHECKED - JDS
 DATE -

REVISED -
 REVISED -
 REVISED -
 REVISED -

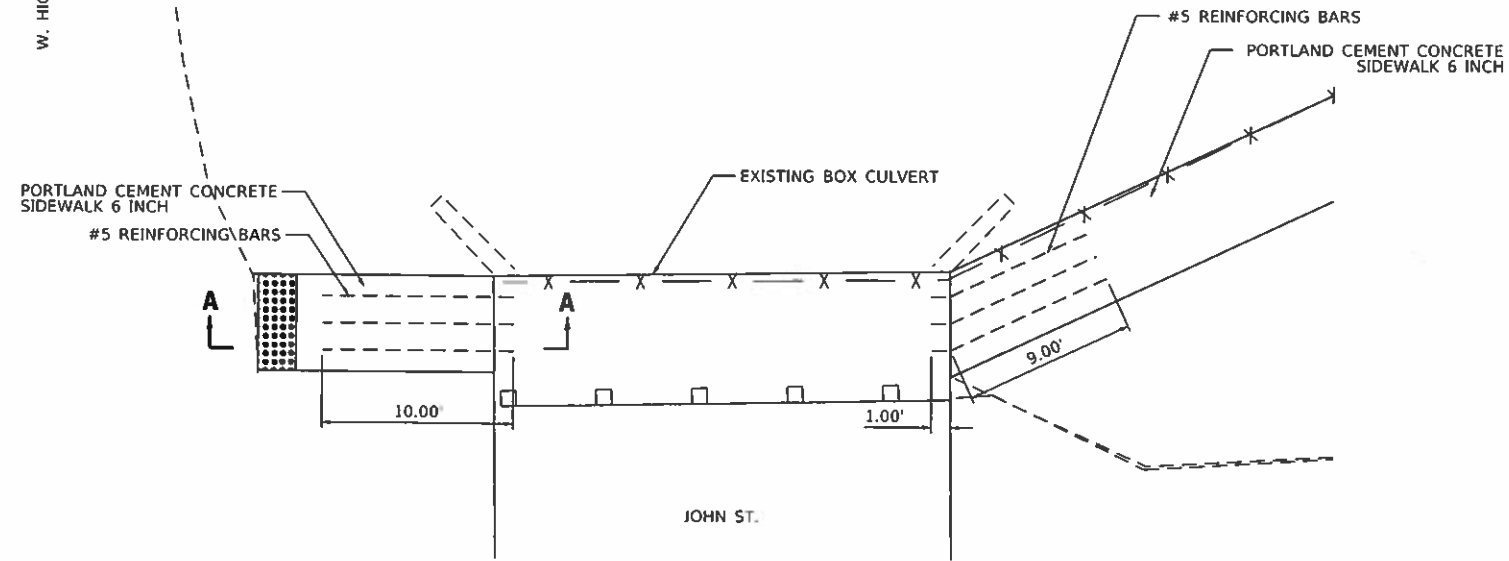
CITY OF FARMER CITY

**JOHN STREET SRIS IMPROVEMENTS
ADA CURB RAMP DETAILS**

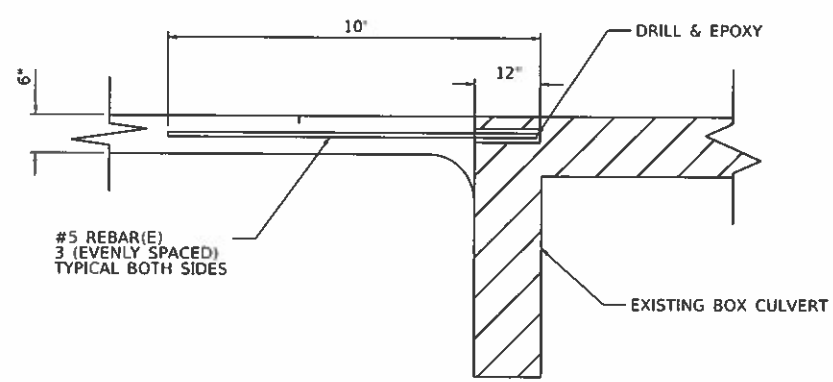
SCALE: SHEET OF SHEETS STA. TO STA.

F.A.S. RTE.	SECTION	COUNTY	TOTAL SHEETS	SHEET NO.
2495	19-00059-00-SW	DEWITT	19	11
CONTRACT NO. 91590				
ILLINOIS FED. AID PROJECT				

W. HIGH ST.

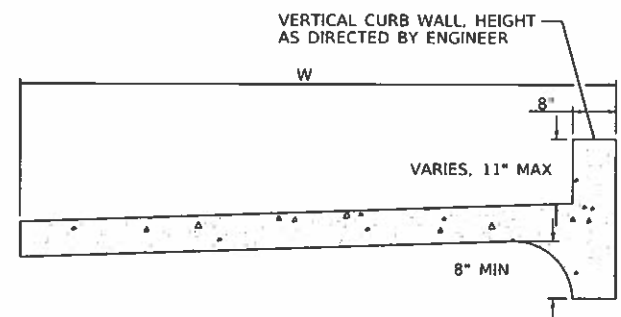


PLAN VIEW
STA. 112+93.51 TO STA. 115+12.77



SECTION A-A

PORTLAND CEMENT CONCRETE SIDEWALK 6 INCH DETAIL



PORTLAND CEMENT CONCRETE SIDEWALK 4 INCH, SPECIAL DETAIL

- GENERAL NOTES:
1. ALL PROVISIONS IN SECTION 424 OF THE STANDARD SPECIFICATIONS SHALL APPLY, UNLESS OTHERWISE SHOWN.
 2. SIDEWALK WIDTH (W) SHALL BE MEASURED FROM EDGE OF SIDEWALK TO BACK OF VERTICAL CURB WALL AND WILL NOT INCLUDE HEIGHT OF THE VERTICAL CURB WALL.
 3. CROSS SLOPE SHALL NOT EXCEED 2% EXCEPT AT TRANSITIONAL PANELS WHERE PROPOSED SIDEWALK MATCHES EXISTING SIDEWALK.

MODEL: Default
 FILE NAME: S:\33372019\21719015.00\Farmer City_SRTS_Plan_SideWalk_Detail.dwg
 USER: bhw@stutz.com
 DATE: 3/30/2020



USER NAME = bhw@stutz.com	DESIGNED - CLD	REVISED -
PLOT SCALE = 40,0000' / in.	DRAWN - CLD	REVISED -
PLOT DATE = 3/30/2020	CHECKED - JDS	REVISED -
	DATE -	REVISED -

CITY OF FARMER CITY

JOHN STREET SRTS IMPROVEMENTS
SIDEWALK DETAILS

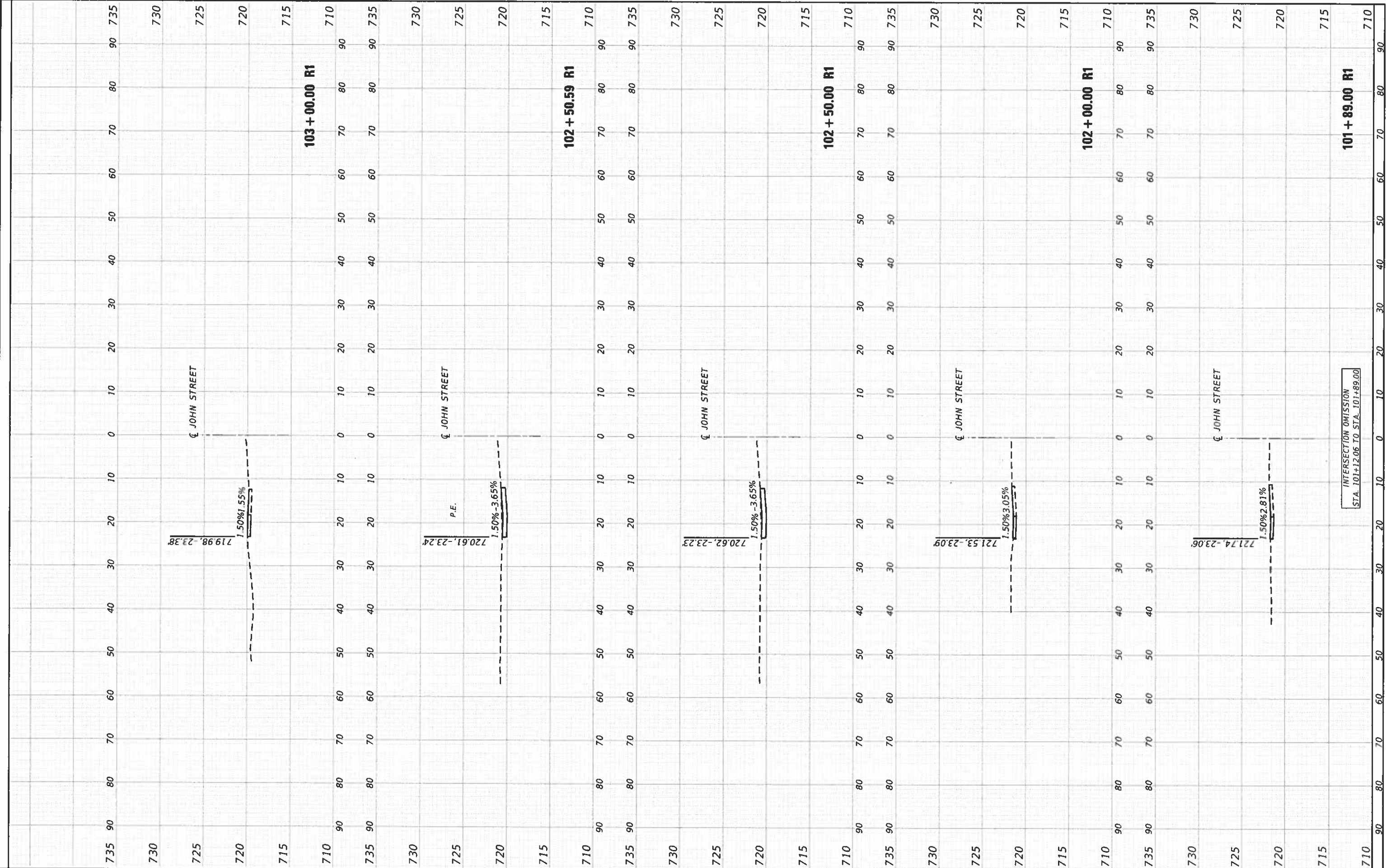
SCALE SHEET OF SHEETS STA. TO STA.

F.A.S. RTE.	SECTION	COUNTY	TOTAL SHEETS	SHEET NO.
2495	19-00059-00-SW	DEWITT	19	12
CONTRACT NO. 91590				
ILLINOIS FED. AID PROJECT				

FINAL SURVEY NO.	SURVEYED	DATE
NOTE BOOK NO.	PLOTTED	
	TEMPLATE	
	AREAS CHECKED	

ORIGINAL SURVEY NO.	SURVEYED	DATE
NOTE BOOK NO.	PLOTTED	
	TEMPLATE	
	AREAS CHECKED	

MODEL: D:\dwg\19-00059-00-SW\19-00059-00-SW-101+89.00-103+00.00.dwg
 FILE NAME: 19-00059-00-SW-101+89.00-103+00.00.dwg



USER NAME = bmwagehoft	DESIGNED - CLD	REVISED -
PLOT SCALE = 20.0000' = 1" = 40'	DRAWN - CAD	REVISED -
PLOT DATE = 1/30/2020	CHECKED - JDS	REVISED -
	DATE -	REVISED -

CITY OF FARMER CITY

**JOHN STREET SRTS IMPROVEMENTS
JOHN STREET CROSS SECTIONS**

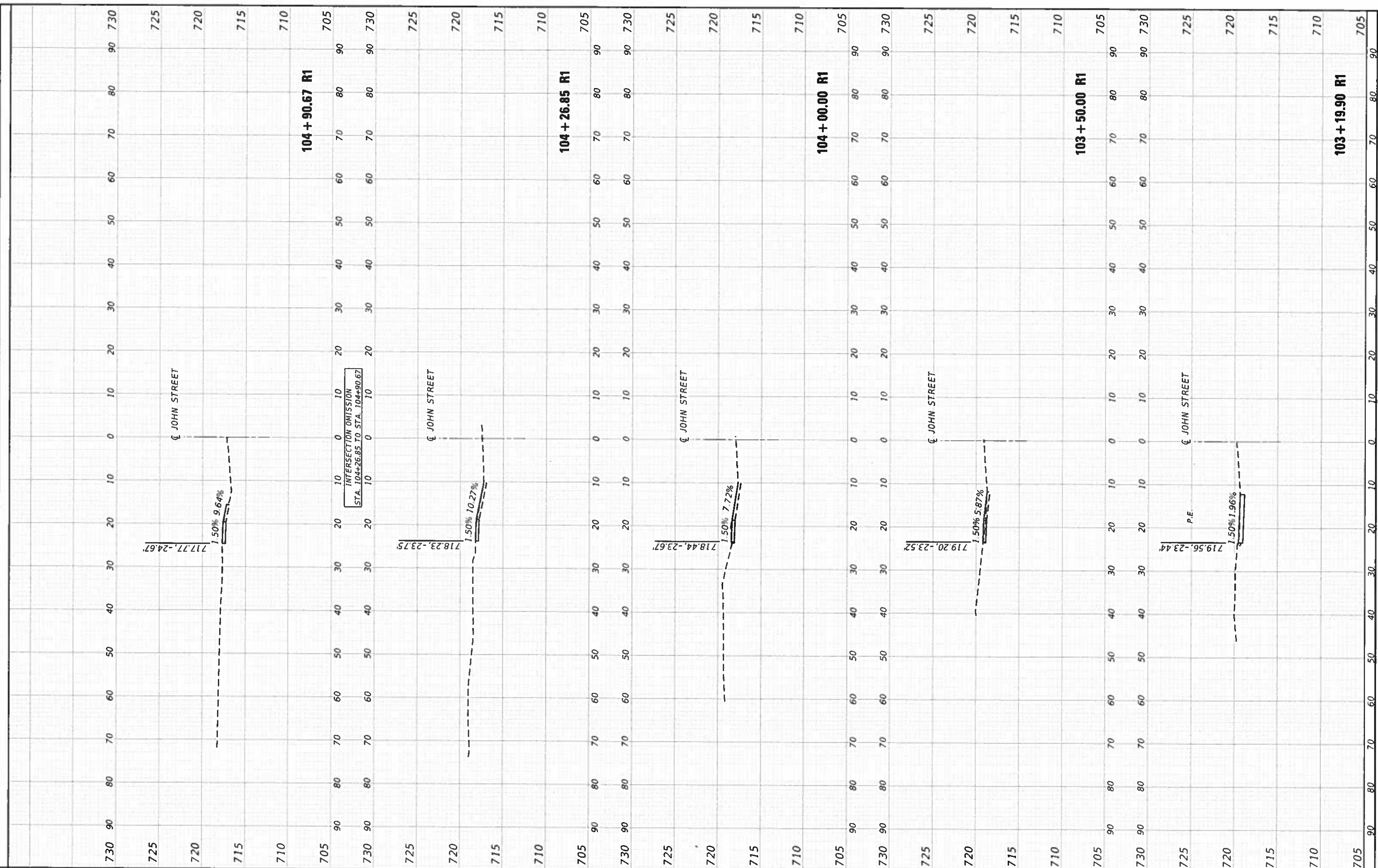
SCALE: SHEET OF SHEETS STA. 101+89.00 R1 TO STA. 103+00.00 R1

F.A.S. RTE	SECTION	COUNTY	TOTAL SHEETS	SHEET NO.
2495	19-00059-00-SW	DEWITT	19	13
CONTRACT NO. 91590			ILLINOIS FED. AID PROJECT	

FINAL SURVEY	SUBMITTED	BY	DATE
NOTE BOOK	PLOTTED		
NO.	TEMPLATE		
	AREAS		
	CHECKED		
	DATE		

ORIGINAL SURVEY	SUBMITTED	BY	DATE
NOTE BOOK	PLOTTED		
NO.	TEMPLATE		
	AREAS		
	CHECKED		
	DATE		

MODEL: D:\DWG\FILE NAME: S:\2020\19015.00 Farmer City SRTS PH. HILLCAD\CADD\SSWSD\19015-00\19015-00-19.00.dwg



USER NAME	= bmwagehoft
PLOT SCALE	= 20.0000' / in.
PLOT DATE	= 1/30/2020

DESIGNED	-	CID
DRAWN	-	CAD
CHECKED	-	JDS
DATE	-	

REVISED	-
REVISED	-
REVISED	-
REVISED	-

CITY OF FARMER CITY

JOHN STREET SRTS IMPROVEMENTS
JOHN STREET CROSS SECTIONS

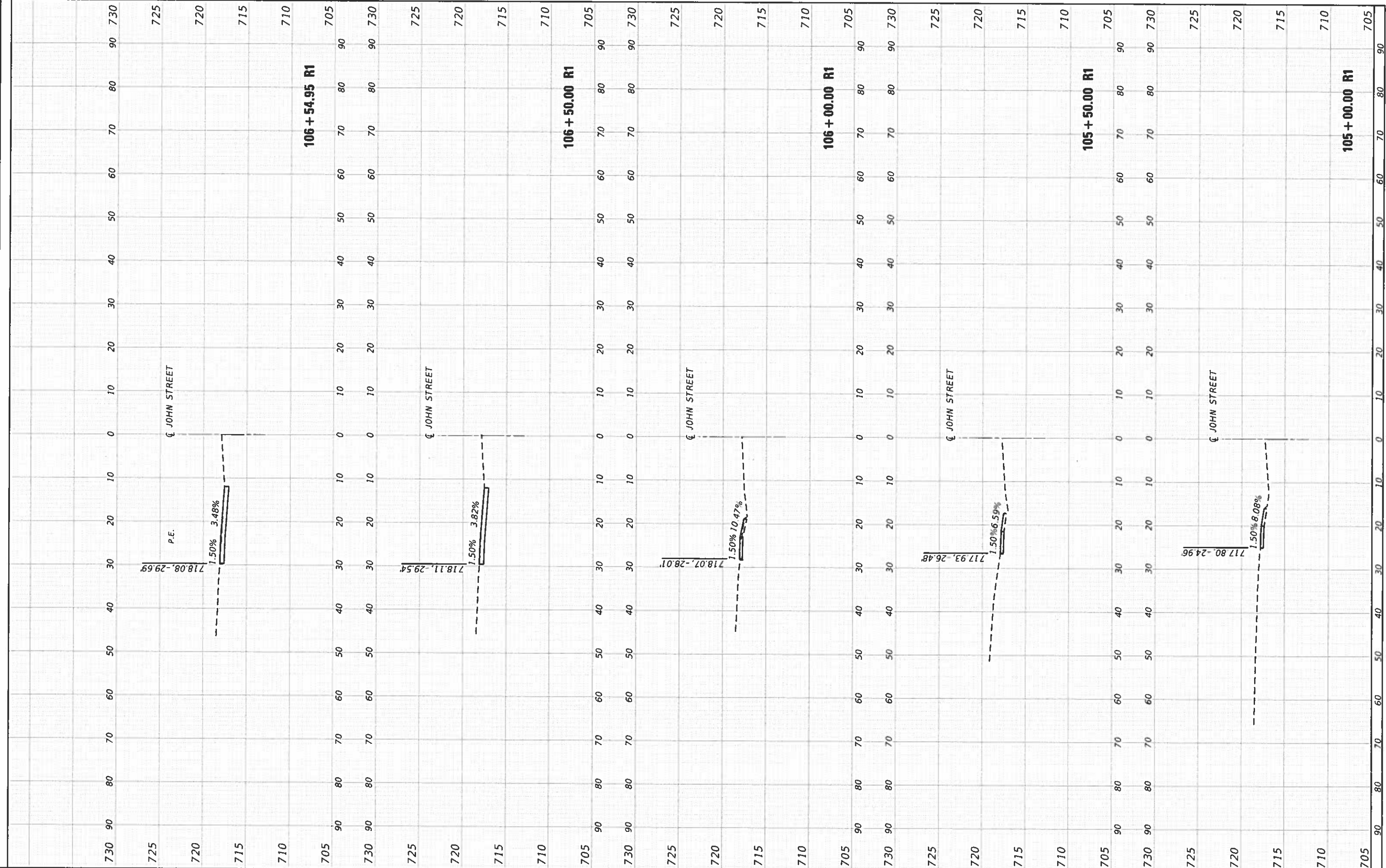
SCALE: SHEET OF SHEETS STA.103+19.90 R1 TO STA. 104+90.67 R1

F.A.S. RTE.	SECTION	COUNTY	TOTAL SHEETS	SHEET NO.
2495	19-00059-00-SW	DEWITT	19	14
CONTRACT NO. 91590			ILLINOIS FED. AID PROJECT	

FINAL SURVEY	NO. _____
SURVEYED	DATE _____
PLOTTED	BY _____
TEMPERATURE	
AREAS	
CHECKED	

ORIGINAL SURVEY	NO. _____
SURVEYED	DATE _____
PLOTTED	BY _____
TEMPERATURE	
AREAS	
CHECKED	

MODEL DRAWN: 5/13/2020 10:21:00 (Farmer City, SD) Ph. 605.436.6000
 FILE NAME: S:\2020\19-00059-00-SW\19-00059-00-SW-019.dwg

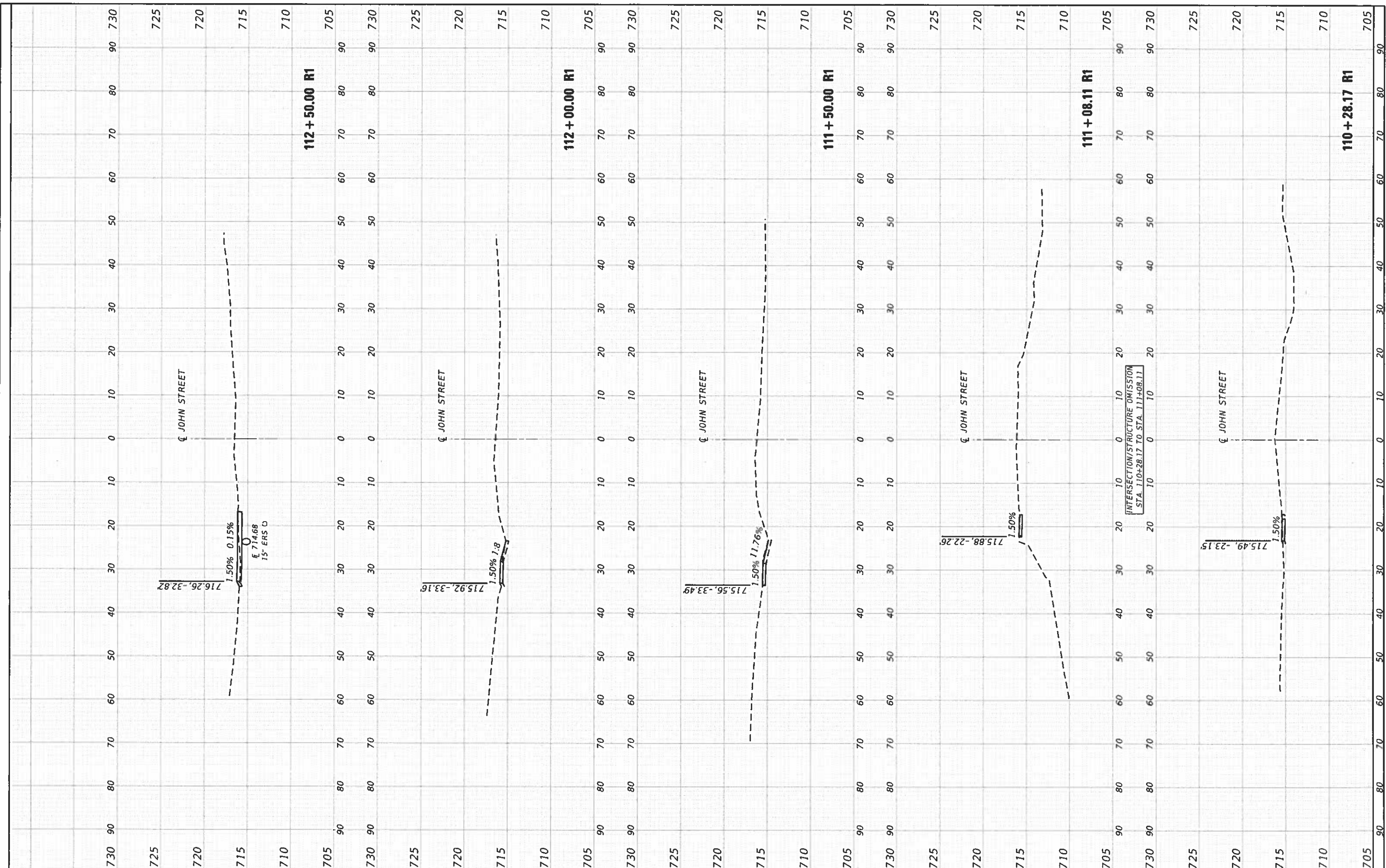


	USER NAME = bmwagehoft	DESIGNED - CLD	REVISED -	CITY OF FARMER CITY	JOHN STREET SRTS IMPROVEMENTS JOHN STREET CROSS SECTIONS	F.A.S. RTE. 2495	SECTION 19-00059-00-SW	COUNTY DEWITT	TOTAL SHEETS 19	SHEET NO. 15
	PLOT SCALE = 1/4" = 20.0000' / in.	CHECKED - JDS	REVISED -			SCALE:	SHEET OF SHEETS	STA. 105+00.00 R1 TO STA. 106+54.95 R1	CONTRACT NO. 91590	
PLOT DATE = 1/30/2020	DATE -	REVISED -	REVISED -			ILLINOIS FED. AID PROJECT				

FINAL SURVEY	SURVEYED	BY	DATE
NOTE BOOK NO.	PLOTTED TEMPLATE AREAS CHECKED		

ORIGINAL SURVEY	SURVEYED	BY	DATE
NOTE BOOK NO.	PLOTTED TEMPLATE AREAS CHECKED		

MODEL: D:\msh\19-00059-00-19 Farmer City SRTS Im. ILLINOIS\CD\CDG00 Sheets\05190132-00-section11.dgn

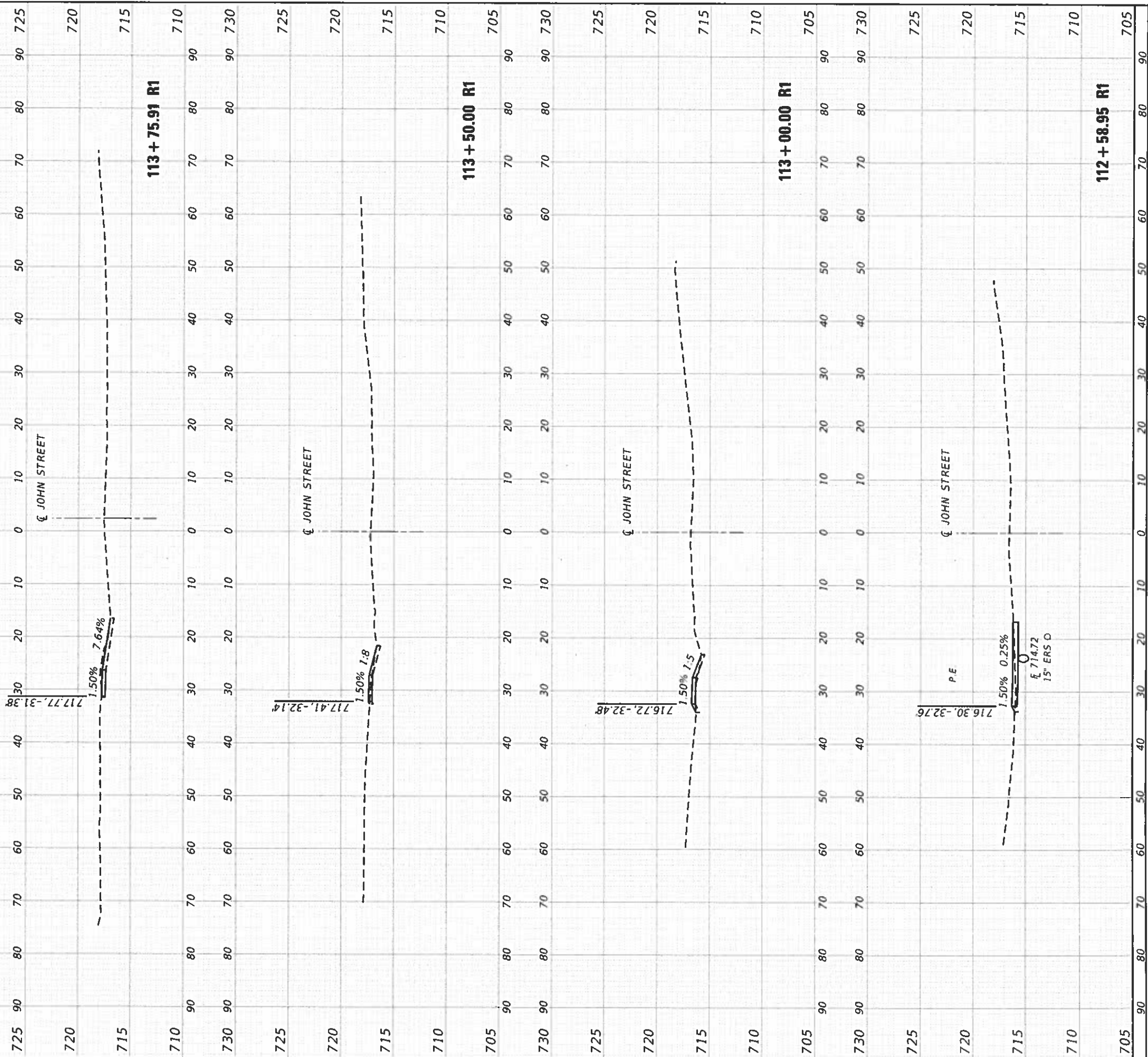


	USER NAME = mshwageholt	DESIGNED - CJD	REVISED -	CITY OF FARMER CITY	JOHN STREET SRTS IMPROVEMENTS JOHN STREET CROSS SECTIONS			F.A.S. RATE = 2495	SECTION = 19-00059-00-SW	COUNTY = DEWITT	TOTAL SHEETS = 19	SHEET NO. = 18
	PLOT SCALE = 20.0000' / 1"	CHECKED - JDS	REVISED -		SCALE:	SHEET	OF	SHEETS	CONTRACT NO. 91590		ILLINOIS	FED. AID PROJECT
	PLOT DATE = 1/30/2020	DATE -	REVISED -		STA. 110+28.17 R1 TO STA. 112+50.00 R1							

FINAL SURVEY NO.	SURVEYED	BY	DATE
NOTE BOOK NO.	PLOTTED		
AREAS CHECKED	ILLUSTRATED		
	AREAS CHECKED		

ORIGINAL SURVEY NO.	SURVEYED	BY	DATE
NOTE BOOK NO.	PLOTTED		
AREAS CHECKED	ILLUSTRATED		
	AREAS CHECKED		

MODEL DRAWN BY: MAURER-STUTZ ENGINEERS SURVEYORS
 FILE NUMBER: 31112+58.95 R1 TO 31113+75.91 R1
 PROJECT: JOHN STREET SRTS IMPROVEMENTS



USER NAME	bmwagehoft	DESIGNED	CLD	REVISED	.
PLOT SCALE	= 20.0000' / 1" =	DRAWN	CAD	REVISED	.
PLOT DATE	= 1/30/2020	CHECKED	IDS	REVISED	.
		DATE	.	REVISED	.

CITY OF FARMER CITY

**JOHN STREET SRTS IMPROVEMENTS
 JOHN STREET CROSS SECTIONS**

SCALE: SHEET OF SHEETS STA. 112+58.95 R1 TO STA. 113+75.91 R1

F.A.S. RTE	SECTION	COUNTY	TOTAL SHEETS	SHEET NO.
249S	19-00059-00-SW	DEWITT	19	19
				CONTRACT NO. 91590
ILLINOIS FED. AID PROJECT				