

STATE OF ILLINOIS

DEPARTMENT OF TRANSPORTATION

PLANS FOR PROPOSED  
HIGHWAY SAFETY IMPROVEMENT PROJECT

F.A. RTE.	SECTION	COUNTY	TOTAL SHEETS	SHEET NO.
VARIOUS	17-00140-00-GR	MONTGOMERY	15	1
FEDERAL AID PROJECT		ILLINOIS	CONTRACT NO. 93739	

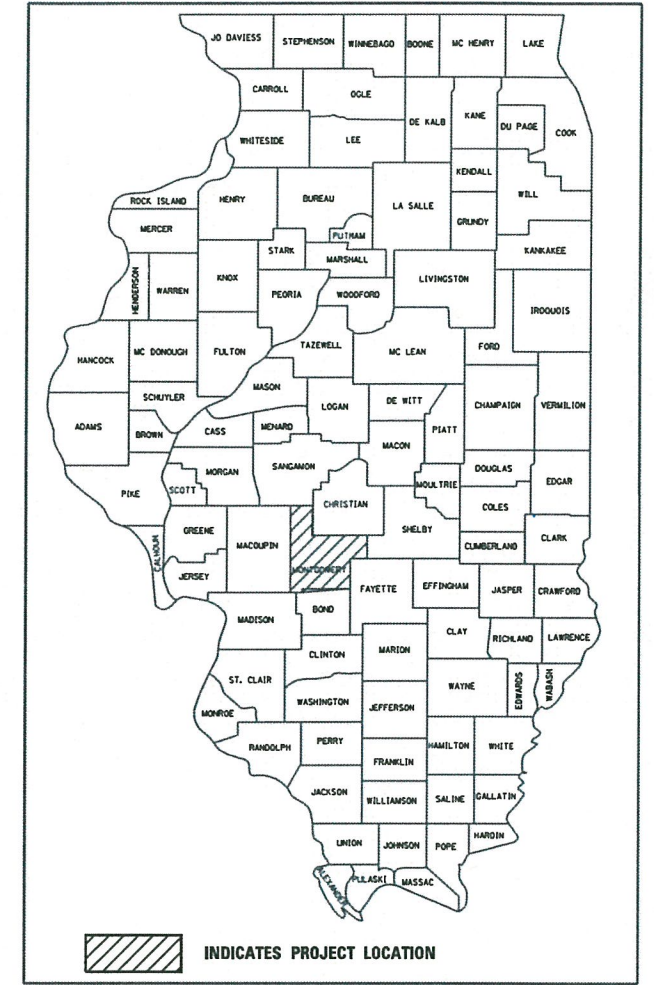
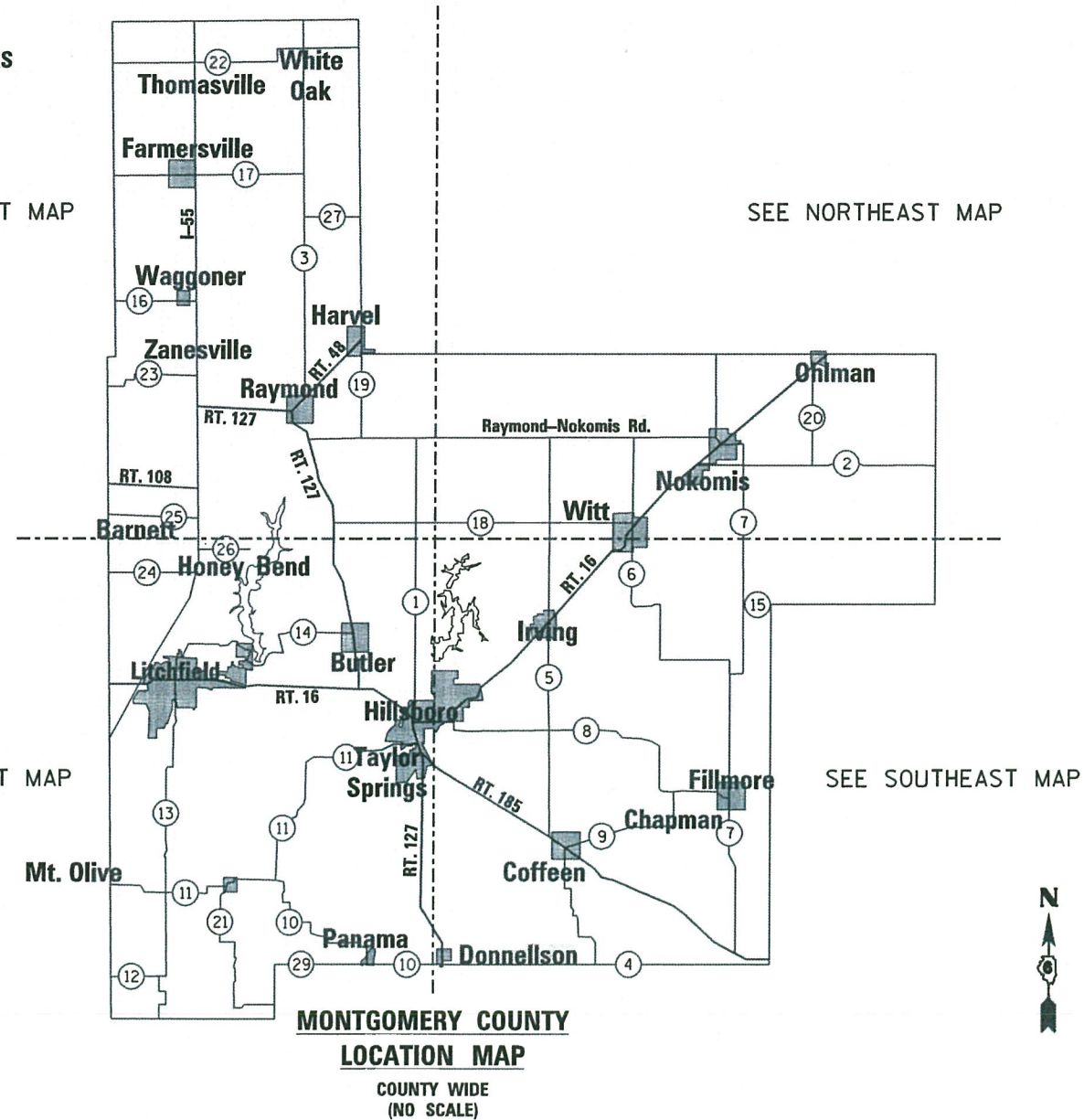
SEE SHEET 2 FOR UTILITIES AND LIST OF ILLINOIS DOT HIGHWAY STANDARDS

COUNTY WIDE GUARDRAIL UPGRADE  
SECTION 17-00140-00-GR  
13UV(370)  
MONTGOMERY COUNTY

INDEX OF SHEETS

SHEET NO.	TITLE
1	COVER SHEET
2	INDEX OF SHEETS, HIGHWAY STANDARDS AND SUMMARY OF QUANTITIES
3	TYPICAL PLAN, SECTIONS AND GENERAL NOTES
4	TYPICAL TERMINAL REPLACEMENT
5	STEEL RAILING, TYPE 2399
6	CONCRETE COLLAR
7	SIGN DETAILS AND QUANTITIES
8	LOCATION MAP - NORTHEAST MONTGOMERY COUNTY
9	SCHEDULE OF QUANTITIES - NORTHEAST MONTGOMERY COUNTY
10	LOCATION MAP - NORTHWEST MONTGOMERY COUNTY
11	SCHEDULE OF QUANTITIES - NORTHWEST MONTGOMERY COUNTY
12	LOCATION MAP - SOUTHEAST MONTGOMERY COUNTY
13	SCHEDULE OF QUANTITIES - SOUTHEAST MONTGOMERY COUNTY
14	LOCATION MAP - SOUTHWEST MONTGOMERY COUNTY
15	SCHEDULE OF QUANTITIES - SOUTHWEST MONTGOMERY COUNTY

C-96-001-19



*Sarah M. Anderson* Date 12-19-19

Sarah M. Anderson  
Illinois Professional Engineer  
No. 062-066722  
Exp. Date 11/30/2021

J.U.L.I.E.  
JOINT UTILITY LOCATION INFORMATION FOR EXCAVATION  
1-800-892-0123  
OR 811

Prairie Engineers, P.C.  
www.prairieengineers.com  
professional design firm no. 184-005965  
© Copyright Prairie Engineers, P.C. 2018

STATE OF ILLINOIS  
DEPARTMENT OF TRANSPORTATION

APPROVED 12-19 20 19  
*[Signature]*  
MONTGOMERY COUNTY ENGINEER

PASSED Feb 6 20 20  
*[Signature]*  
DISTRICT ENGINEER, LOCAL ROADS & STREETS

RELEASING FOR BID BASED ON LIMITED REVIEW Feb 6 20 20  
*[Signature]*  
REGION FOUR ENGINEER

**POTENTIAL UTILITIES AFFECTED - OWNERS**

UTILITY	CONTACT	PHONE
AMEREN	NATHAN HILL	618-301-5327
ATT TRANSMISSION	KENNETH COLWELL	630-383-9249
BUCKEYE PARTNERS	DAVE JONES	610-904-4409
COMPUTER TECHNIQUES, INC.	ADAM VOCKS	217-824-6398
CITY OF COFFEEN	BILL WHITLOW	217-532-9233
E.J. WATER COOPERATIVE	LEE BECKMAN	217-347-7262
EXPLORER PIPELINE COMPANY	RAY MATLOCK	918-493-5153
VILLAGE OF FARMERSVILLE	WATER AND SEWER DEPT.	217-227-4169
FRONTIER COMMUNICATIONS	KALIN HINSHAW	815-895-1515
HENDERSON WATER DISTRICT	RONNIE PAUL	618-498-6418
CITY OF HILLSBORO	HURST-ROSCHE ENGINEERING	217-532-3959
ILLINOIS CONSOLIDATED TELEPHONE	WES CHAMBERS	217-235-3355
LEVEL 3 NOW /CENTURY LINK	NETWORK RELOCATIONS	877-366-8344 EXT 2
LIBERTY UTILITIES	LES SMITH	618-267-1675
CITY OF LITCHFIELD	BILL MEYER	217-851-4841
MARATHON (WOOD RIVER)	TODD WADKINS	217-382-2234
M.J.M. ELECTRIC	GAGE GWILLIAM	217-707-6033
MONTGOMERY COUNTY WATER	BILL BROWN	618-252-8111
NEW WAVE COMMUNICATIONS	ROBERT EVRLEY	217-287-7992 EXT 6
NUSTAR PIPELINE	THERESA LANDRY	316-721-7037
VILLAGE OF PANAMA	JOHN HORTSMANN	618-973-4784
RURAL ELEC. CONV. COOPERATIVE	CHRIS BRIDGES	217-502-4439
SHELBY ELECTRIC COOPERATIVE	JIM MATLOCK	217-774-3986
SOUTHWESTERN ELECTRIC COOPERATIVE	NATALIE GOESTENKORS	800-637-8667 EXT 5933
SUNOCO ENERGY TRANSFER	BOB THOMPSON	618-835-2251 EXT 222
THREE COUNTY PUBLIC WATER DISTRICT	JOSH BURDELL	217-246-6900
WINDSTREAM KDL/McLEOD USA	LOCATE DESK	800-289-1901
VILLAGE OF WAGGONER	TAMMIE ELIASON	217-710-8572
CITY OF WITT	BILL WHITLOW	217-532-9233

**LIST OF IDOT HIGHWAY STANDARDS**

280001-07	TEMPORARY EROSION CONTROL SYSTEMS
630001-12	STEEL PLATE BEAM GUARDRAIL
630301-09	SHOULDER WIDENING FOR TYPE 1 (SPECIAL) GUARDRAIL TERMINALS
631032-09	TRAFFIC BARRIER TERMINAL, TYPE 6A
635001-02	DELINEATORS
701006-05	OFF-ROAD OPERATIONS, 2L, 2W, 15' (4.5 M) TO 24' (600 MM) FROM PAVEMENT EDGE
701201-05	LANE CLOSURE, 2L, 2W, DAY ONLY, FOR SPEEDS > 45 MPH
701301-04	LANE CLOSURE 2L, 2W, SHORT TIME OPERATIONS
701501-06	URBAN LANE CLOSURE 2L, 2W, UNDIVIDED
701901-08	TRAFFIC CONTROL DEVICES
720001-01	SIGN PANEL MOUNTING DETAILS
720006-04	SIGN PANEL ERECTION DETAILS
720011-01	METAL POSTS FOR SIGNS, MARKERS & DELINEATORS
725001-01	OBJECT AND TERMINAL MARKERS
728001-01	TELESCOPING STEEL SIGN SUPPORT
782006-01	GUARDRAIL AND BARRIER WALL REFLECTOR MOUNTING DETAILS

SUMMARY OF QUANTITIES			CONSTRUCTION CODE 0021
CODE	ITEM	UNIT	TOTAL QUANTITY
△	20200100	EARTH EXCAVATION	CU YD 1225
△	20400800	FURNISHED EXCAVATION	CU YD 2655
	28000250	TEMPORARY EROSION CONTROL SEEDING	POUND 272
△	28000305	TEMPORARY DITCH CHECKS	FOOT 296
△	28000400	PERIMETER EROSION BARRIER	FOOT 4622
△	28000500	INLET AND PIPE PROTECTION	EACH 13
	50104000	BRIDGE RAIL REMOVAL	FOOT 180
	50900200	STEEL RAILING, TYPE 2399	FOOT 180
	542D0220	PIPE CULVERTS, CLASS D, TYPE 1 15"	FOOT 163
	542D0223	PIPE CULVERTS, CLASS D, TYPE 1 18"	FOOT 299
	542D0241	PIPE CULVERTS, CLASS D, TYPE 1 36"	FOOT 36
	63000001	STEEL PLATE BEAM GUARDRAIL, TYPE A, 6 FOOT POSTS	FOOT 1275
	63100087	TRAFFIC BARRIER TERMINAL, TYPE 6A	EACH 6
	63100167	TRAFFIC BARRIER TERMINAL, TYPE 1 (SPECIAL) TANGENT	EACH 96
	63100169	TRAFFIC BARRIER TERMINAL, TYPE 1 (SPECIAL) FLARED	EACH 6
*	63200310	GUARDRAIL REMOVAL	FOOT 4298.5
	63500105	DELINEATORS	EACH 28
	67100100	MOBILIZATION	LSUM 1
	72000100	SIGN PANEL TYPE 1	SQ FT 203
	72400310	REMOVE SIGN PANEL - TYPE I	SQ FT 18
	72501000	TERMINAL MARKER - DIRECT APPLIED	EACH 104
	72800100	TELESCOPING STEEL SIGN SUPPORT	FOOT 405
	78200005	GUARDRAIL REFLECTORS, TYPE A	EACH 106
△ *	X1400097	SOLAR POWER ILLUMINATED SIGN, LED	EACH 3
△ *	X2501000	SEEDING, CLASS 2 (SPECIAL)	ACRE 2.72
*	X6330900	VERTICAL ADJUSTMENT OF GUARDRAIL	FOOT 1325
*	X7010216	TRAFFIC CONTROL AND PROTECTION, (SPECIAL)	LSUM 1
△ *	XX008979	CONCRETE COLLAR	EACH 1
*	Z0013798	CONSTRUCTION LAYOUT	LSUM 1
*	Z0052410	REPAIR TRAFFIC BARRIER TERMINAL, TYPE 1 SPECIAL (TANGENT)	EACH 9
# *	Z0076600	TRAINEES	HOUR 500
# *	Z0076604	TRAINEES TRAINING PROGRAM GRADUATE	HOUR 500

\* SEE SPECIAL PROVISIONS △ SPECIALTY ITEMS

# 0042

FILE NAME = I:\jobs\2017\21117029\_HISIP\_01.mxd MontCoHighways\17-029-3\06080808-hst-02-500.dgn

**Prairie Engineers, P.C.**  
www.prairieengineers.com  
professional design firm no. 184-005965  
© Copyright Prairie Engineers, P.C. 2018

USER NAME = Jmasset	DESIGNED - SMA	REVISED -
	DRAWN - JLM	REVISED -
PLOT SCALE = 2.0000' / in.	CHECKED - SMA	REVISED -
PLOT DATE = 2/4/2020	DATE -	REVISED -

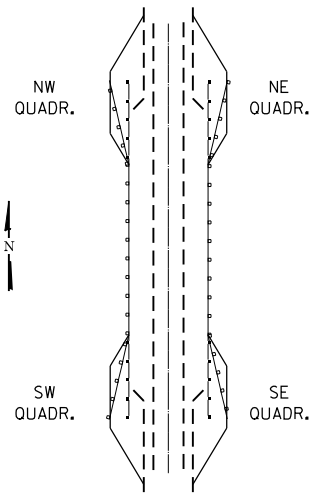
STATE OF ILLINOIS  
DEPARTMENT OF TRANSPORTATION

INDEX OF SHEETS, HIGHWAY STANDARDS  
AND SUMMARY OF QUANTITIES

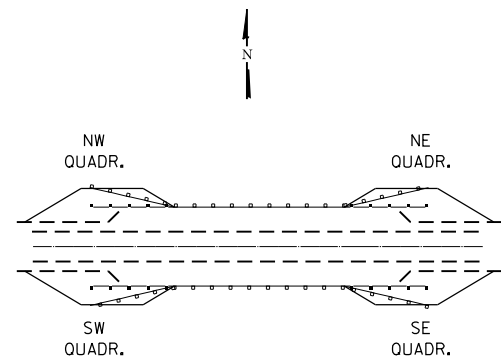
SCALE: SHEET OF SHEETS STA. TO STA.

F.A. RTE.	SECTION	COUNTY	TOTAL SHEETS	SHEET NO.
	17-00140-00-GR	MONTGOMERY	15	2
CONTRACT NO. 93739				
ILLINOIS FED. AID PROJECT				





**NORTHSOUTH ROUTE**



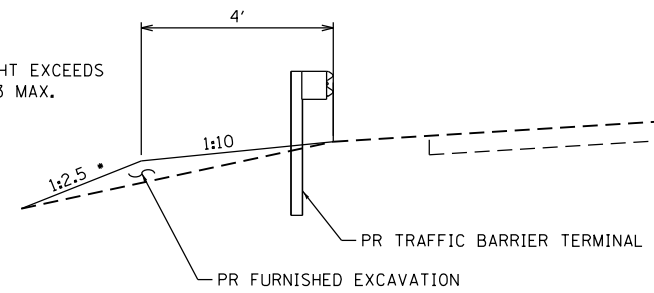
**EAST/WEST ROUTE**

**LOCATION IDENTIFICATION**

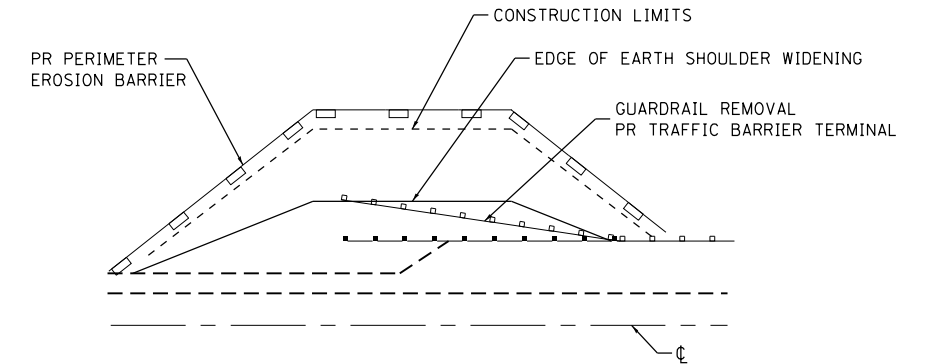
**GENERAL NOTES**

- EXISTING TYPE 5A TERMINALS, TYPE 6 TERMINALS AND GUARDRAIL ATTACHED TO STRUCTURES SHALL REMAIN IN PLACE.
- SEE STANDARD 630301 FOR DETAILS OF SHOULDER WIDENING FOR TYPE 1 (SPECIAL) TERMINALS.
- ALL DISTURBED AREA SHALL BE SEEDED WITH SEEDING, CLASS 2 (SPECIAL).
- EROSION CONTROL ITEMS SHALL BE INSTALLED AS DIRECTED BY THE ENGINEER.
- THE CONTRACTOR SHALL BE RESPONSIBLE FOR PROTECTING UTILITY PROPERTY DURING CONSTRUCTION OPERATIONS AS SPECIFIED IN THE STANDARD SPECIFICATIONS. A MINIMUM OF 48 HOURS ADVANCE NOTICE IS REQUIRED FOR NON-EMERGENCY WORK. THE JULIE NUMBER IS (800) 892-0123.
- NO MATERIAL SHALL BE LEFT ON OR NEAR THE ROADWAY DURING NON-WORKING HOURS.
- REMOVED TERMINALS THAT ARE NOT REPLACED ON THE SAME DAY SHALL BE PROTECTED WITH LIGHTED BARRICADES OR COMPLETED TERMINALS AT ANY TIME.
- WHEN POSTS ARE REQUIRED TO BE INSTALL THROUGH PAVED SHOULDER, ALL COST TO DO SO SHALL BE INCLUDED IN THE CONTRACT UNIT PRICE FOR THE WORK BEING DONE. THE TOP 3 INCHES OF THE AREA AROUND THE POST SHALL BE FILLED WITH BITUMINOUS MATERIAL OR GROUT.
- THE CONTRACTOR IS ADVISED THAT THE GUARDRAIL PAY ITEMS INCLUDED IN THE PLANS MAY BE USED TO REPLACE STEEL PLATE BEAM GUARDRAIL AND TRAFFIC BARRIER TERMINALS FOR THE NEW MIDWEST STANDARD AS SHOWN IN THE HIGHWAY STANDARDS AS WELL AS STEEL PLATE BEAM GUARDRAIL AND TRAFFIC BARRIER TERMINALS INSTALLED PRIOR TO JANUARY 1, 2007. NO ADDITIONAL COMPENSATION WILL BE ALLOWED FOR UTILIZING THE CURRENT MIDWEST STANDARDS.

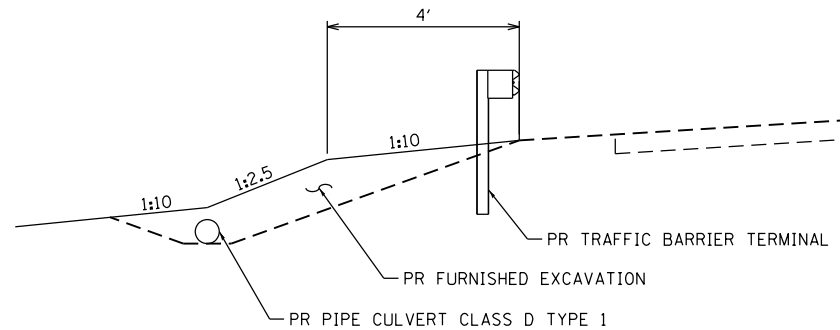
IF FILL HEIGHT EXCEEDS 5'-0" USE 1:3 MAX.



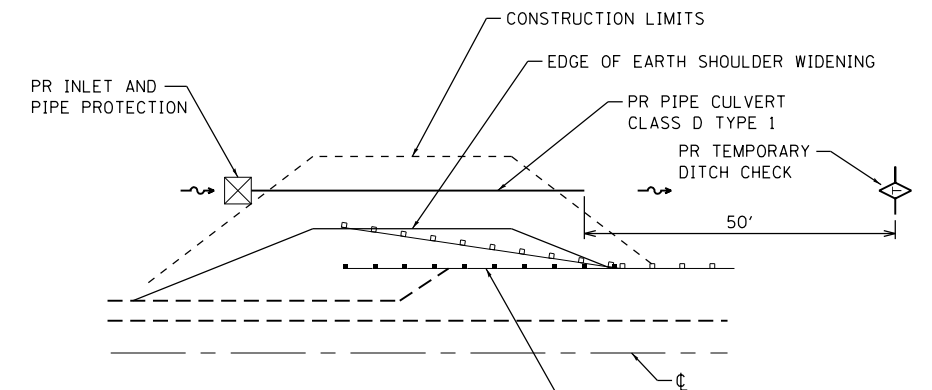
**TYPICAL CROSS SECTION  
FILL SECTION**



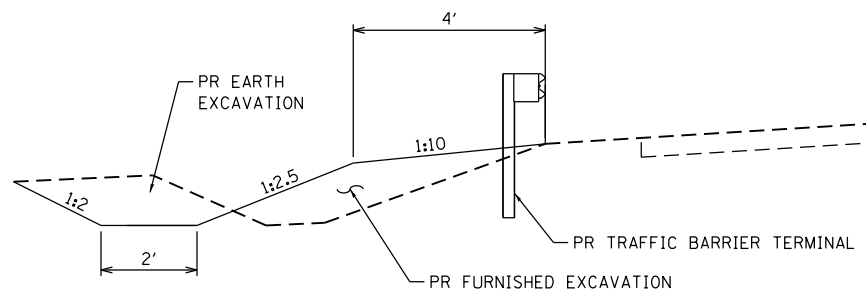
**TYPICAL PLAN  
FILL SECTION**



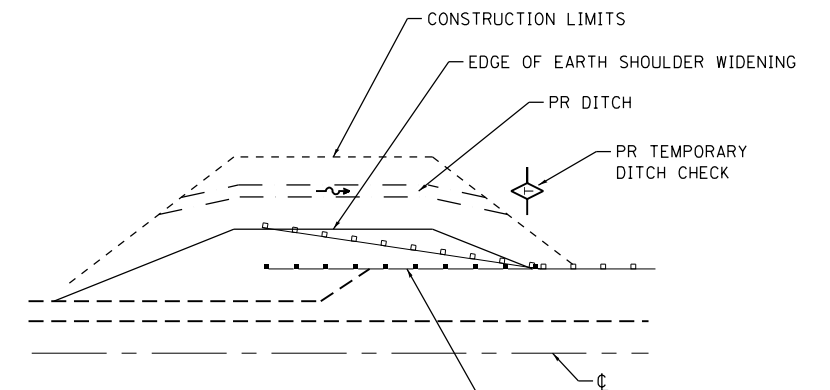
**TYPICAL CROSS SECTION  
WITH PIPE CULVERT**



**TYPICAL PLAN  
WITH PIPE CULVERT**



**TYPICAL CROSS SECTION  
WITH DITCH WORK**



**TYPICAL PLAN  
WITH DITCH WORK**

FILE NAME = I:\\_jrbas\2017\11\17029 HSIP Grant MontCohy\Dep17-029-3\06000000-eh-03-TYP PLAN\_SEC & GEN NOTES.dgn

**Prairie Engineers, P.C.**  
www.prairieengineers.com  
professional design firm no. 184-005965  
© Copyright Prairie Engineers, P.C. 2018

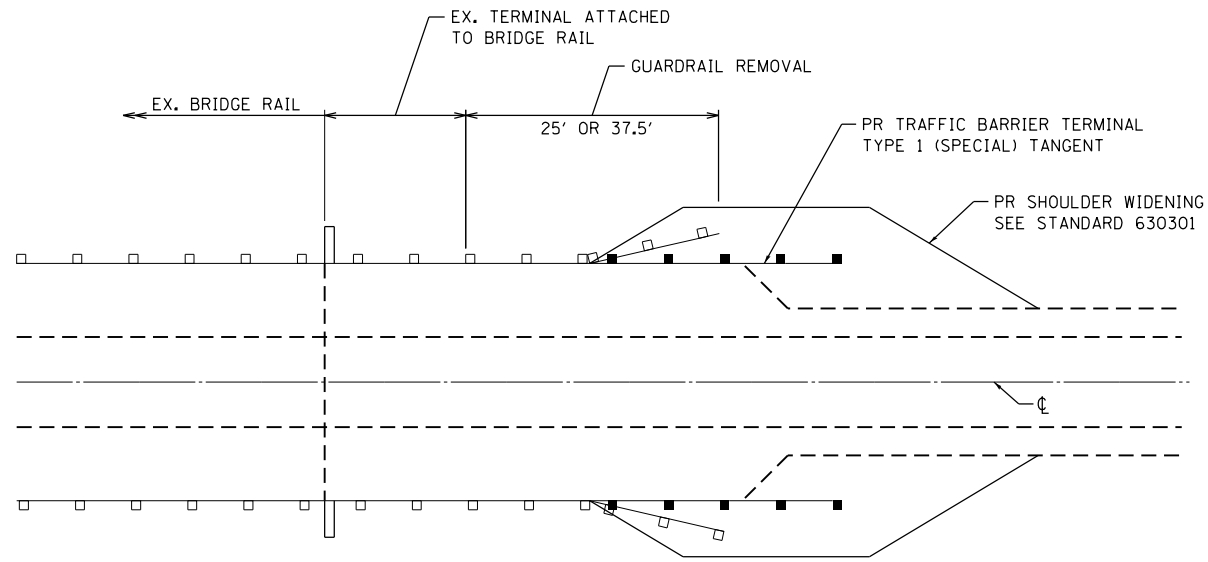
USER NAME = jmosset	DESIGNED - SMA	REVISED -
PLOT SCALE = 2.0000' / in.	DRAWN - JLM	REVISED -
PLOT DATE = 12/19/2019	CHECKED - SMA	REVISED -
	DATE -	REVISED -

**STATE OF ILLINOIS  
DEPARTMENT OF TRANSPORTATION**

**TYPICAL PLAN, SECTIONS AND GENERAL NOTES**

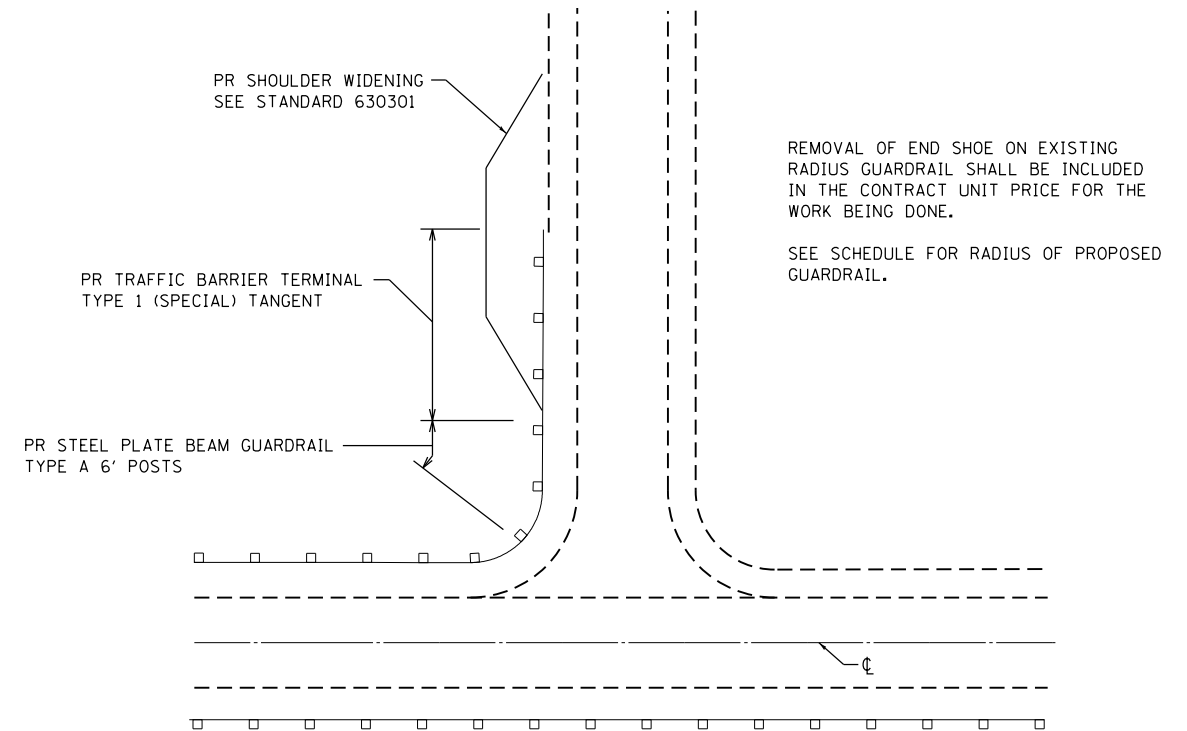
SCALE: SHEET OF SHEETS STA. TO STA.

F.A. RTE.	SECTION	COUNTY	TOTAL SHEETS	SHEET NO.
	17-00140-00-GR	MONTGOMERY	15	3
CONTRACT NO. 93739				
ILLINOIS FED. AID PROJECT				

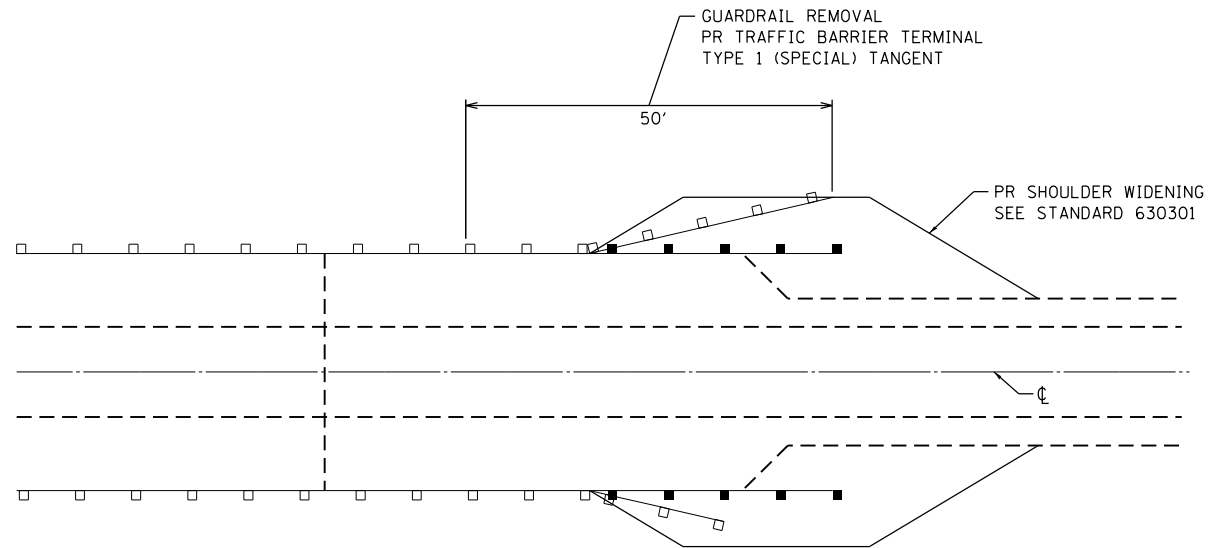


**TYPICAL TERMINAL REPLACEMENT  
LESS THAN 50' OF GUARDRAIL REMOVAL**

APPLIES WHERE EXISTING GUARDRAIL AND TERMINAL, EXCLUDING TERMINALS ATTACHED TO BRIDGE RAIL AND GUARDRAIL ATTACHED TO STRUCTURES, IS LESS THAN 50 FEET.

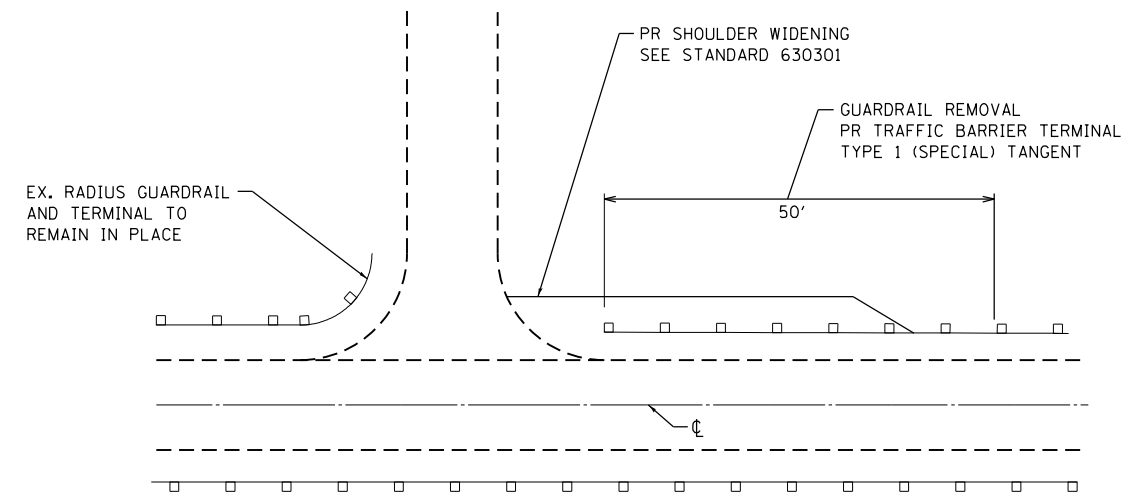


**TYPICAL TERMINAL REPLACEMENT  
EXISTING RADIUS GUARDRAIL AT SIDE ROADS**



**TYPICAL TERMINAL REPLACEMENT  
50' OF GUARDRAIL REMOVAL**

APPLIES WHERE EXISTING GUARDRAIL AND TERMINAL, EXCLUDING TERMINALS ATTACHED TO BRIDGE RAIL AND GUARDRAIL ATTACHED TO STRUCTURES, IS 50 FEET OR MORE.



**TYPICAL TERMINAL REPLACEMENT  
EXISTING GUARDRAIL AT ENTRANCE**

FILE NAME = I:\\_pba\2017\11\172019\_HSP\_Grant\_Montgomery\Dept\17-029-3\06000000-eh-04-TYP\_TERMINAL\_REPLACEMENT.dgn

**Prairie Engineers, P.C.**  
www.prairieengineers.com  
professional design firm no. 184-005965  
© Copyright Prairie Engineers, P.C. 2018

USER NAME = jmosset	DESIGNED - SMA	REVISED -
DRAWN - JLM	REVISIONS -	
PLOT SCALE = 2.0000' / in.	CHECKED - SMA	REVISED -
PLOT DATE = 12/19/2019	DATE -	REVISED -

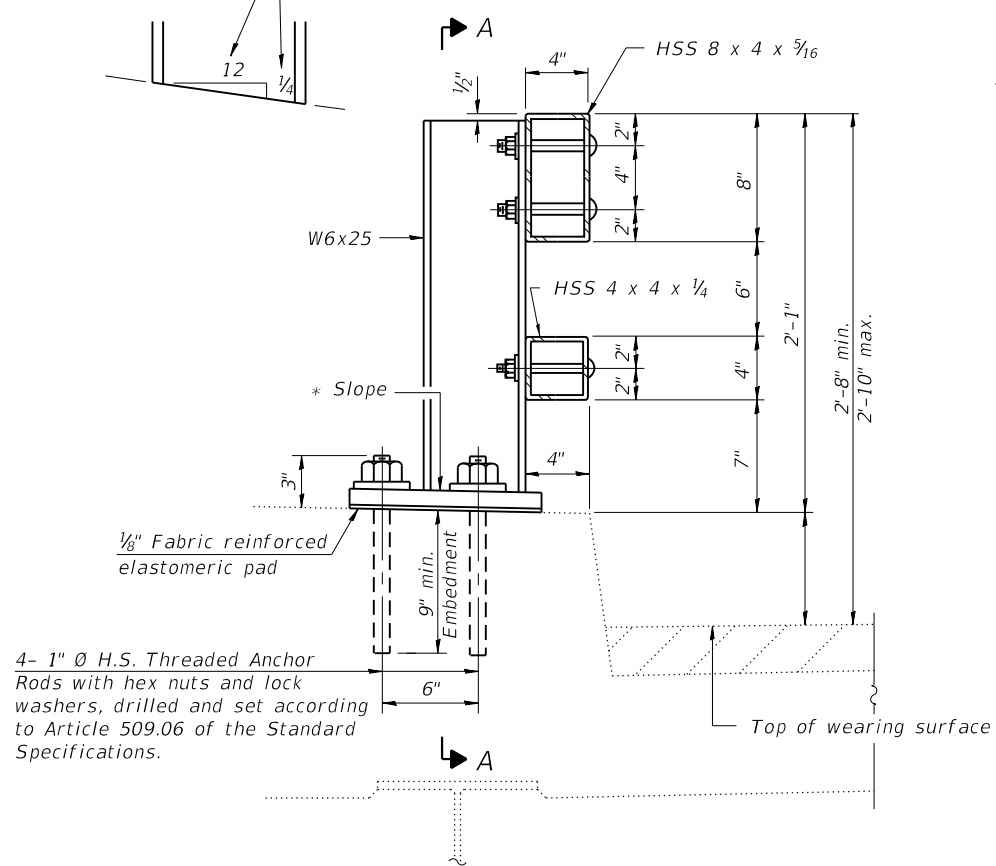
**STATE OF ILLINOIS  
DEPARTMENT OF TRANSPORTATION**

**TYPICAL TERMINAL REPLACEMENT**

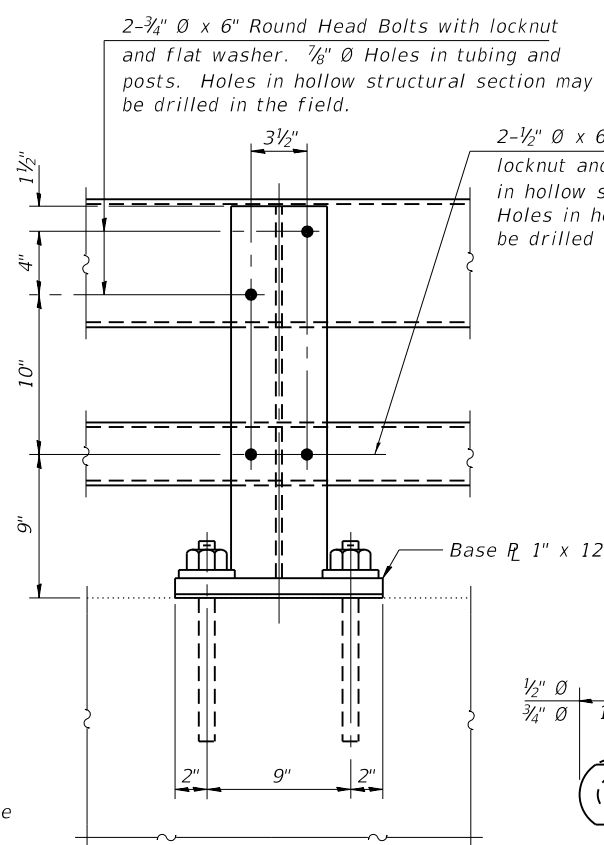
SCALE: SHEET OF SHEETS STA. TO STA.

F.A. RTE.	SECTION	COUNTY	TOTAL SHEETS	SHEET NO.
	17-00140-00-GR	MONTGOMERY	15	4
CONTRACT NO. 93739				
ILLINOIS FED. AID PROJECT				

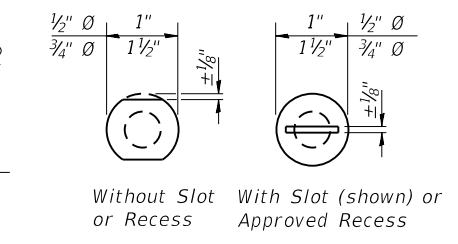
\* Cut bottom end of post to curb slope.



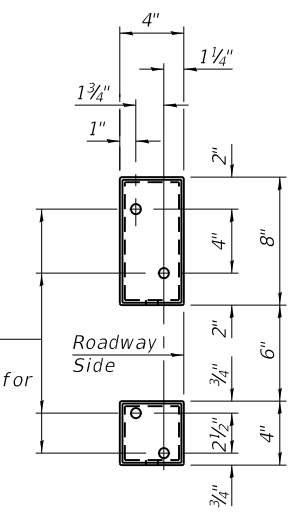
SECTION AT RAIL POST



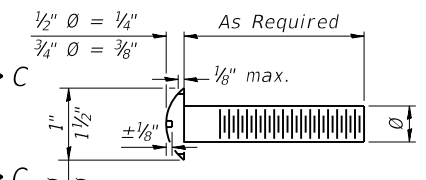
SECTION A-A



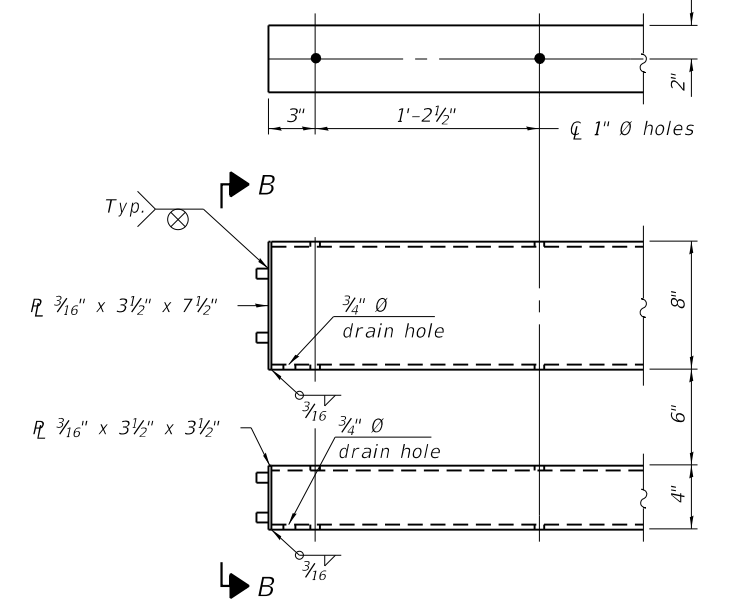
VIEW C-C



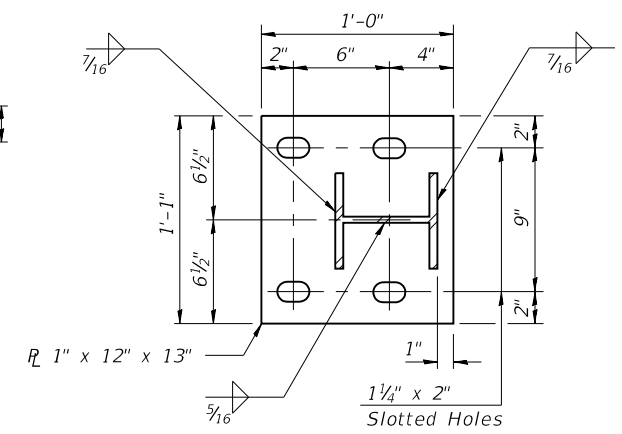
VIEW B-B



DETAIL OF 1/2" & 3/4" ROUND HEAD BOLTS

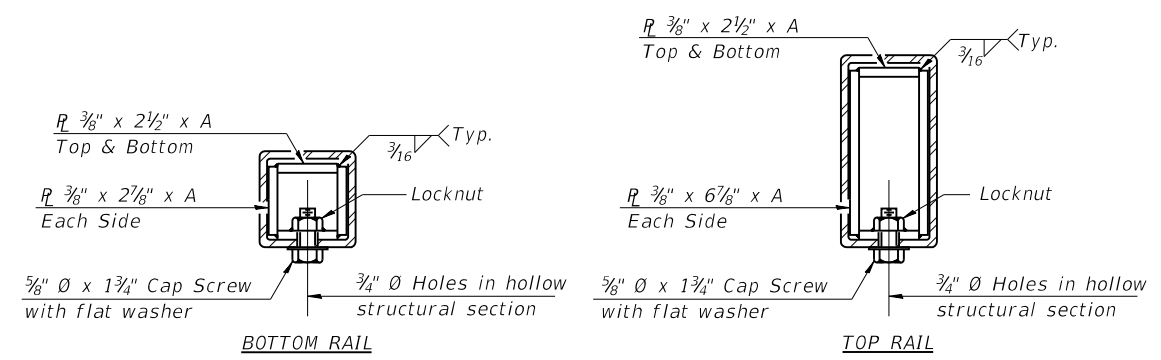


END OF RAIL DETAILS



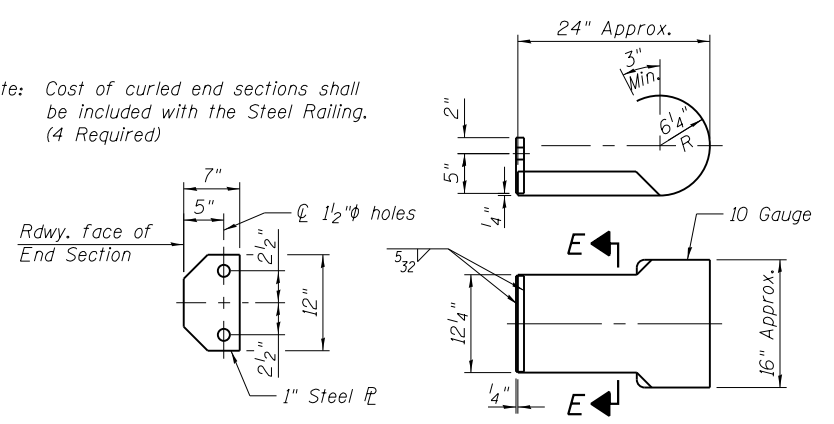
BASE PLATE DETAIL

Notes:  
 Posts shall not be located closer than 1'-3" to an existing bridge expansion joint or end of bridge.  
 Steel Bridge Rail expansion joint shall be provided between any two (2) posts which span a bridge expansion joint. Bolts located at expansion joint shall be provided with locknuts and shall be tightened only to a point that will allow railing movement.  
 Provide one 1/8" and two 1/16" steel shims for 25% of the posts. Shims shall be similar to base plates in size and holes.  
 All steel rail elements shall be galvanized according to Article 509.05 of the Standard Specifications.

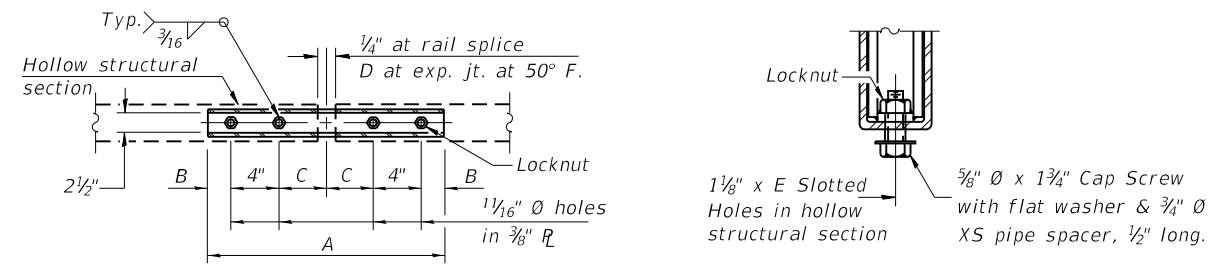


SECTIONS AT RAIL SPLICE

Note: Cost of curled end sections shall be included with the Steel Railing. (4 Required)



SECTION E-E CURLED END SECTION DETAILS



PLAN-BOTT. SPLICE R TYPICAL

RAIL SPLICE CONNECTION AT EXPANSION JT.

SPLICE DIMENSIONS

T	D	A	B	C	E
≤ 4"	2 1/2"	1'-8"	2"	4"	2 1/2"
> 4" ≤ 6 1/2"	3 3/4"	2'-0"	2 1/2"	5 1/2"	3 1/2"
> 6 1/2" ≤ 9"	5"	2'-4"	3 1/2"	6 1/2"	9"
> 9" ≤ 13"	7"	2'-10"	4 1/2"	8 1/2"	11"
Rail Splice	1/2"	1'-8"	2"	4"	—

T = Total movement at expansion joint as shown on the design plans.

BILL OF MATERIAL

Item	Unit	Quantity
Steel Railing, Type 2399	Foot	180
Bridge Rail Removal	Foot	180

FILE NAME = I:\\_pba\2017\11\17\2019 HSIP Grant Mon-Feb\pba\17-029-3\06000000-ht-05 steel railing TYPE 2399.dgn

Prairie Engineers, P.C.  
 www.prairieengineers.com  
 professional design firm no. 184-005965  
 Copyright Prairie Engineers, P.C. 2018

USER NAME = jmosset  
 DESIGNED - SMA  
 DRAWN - JLM  
 PLOT SCALE = 2.0000' / in.  
 CHECKED - SMA  
 DATE -  
 REVISIONS -

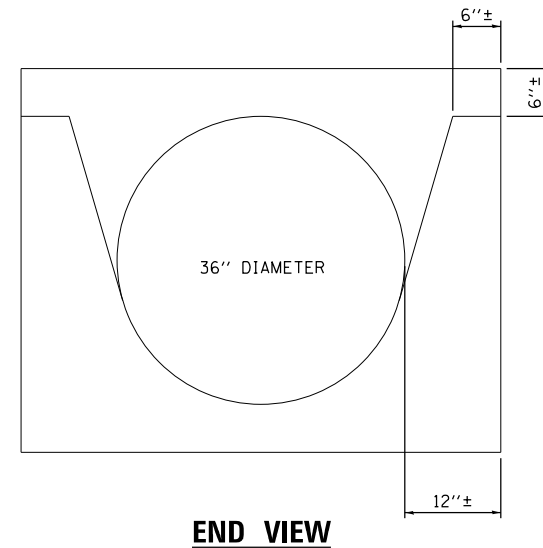
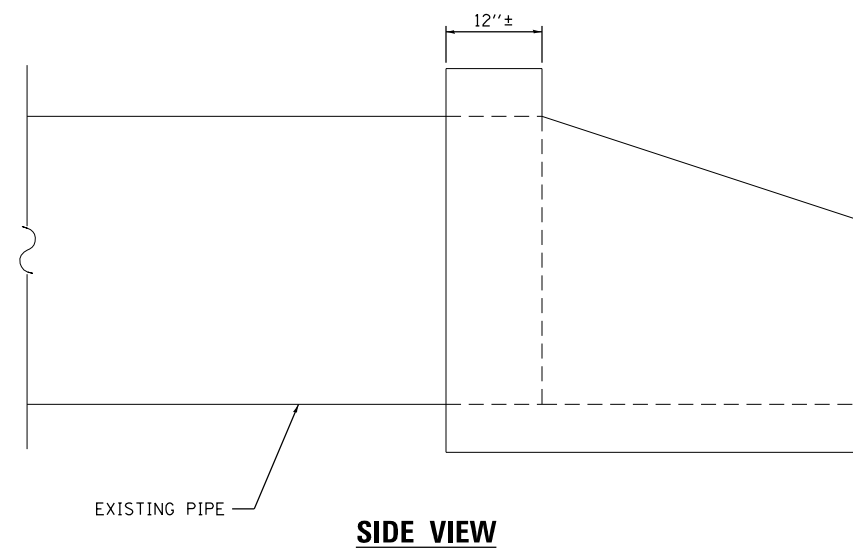
DESIGNED - SMA  
 DRAWN - JLM  
 CHECKED - SMA  
 DATE -  
 REVISIONS -

STATE OF ILLINOIS  
 DEPARTMENT OF TRANSPORTATION

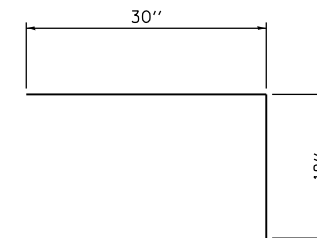
STEEL RAILING, TYPE 2399  
 STRUCTURE NO. 068-3218

SCALE: SHEET 1 OF 1 SHEETS STA. TO STA.

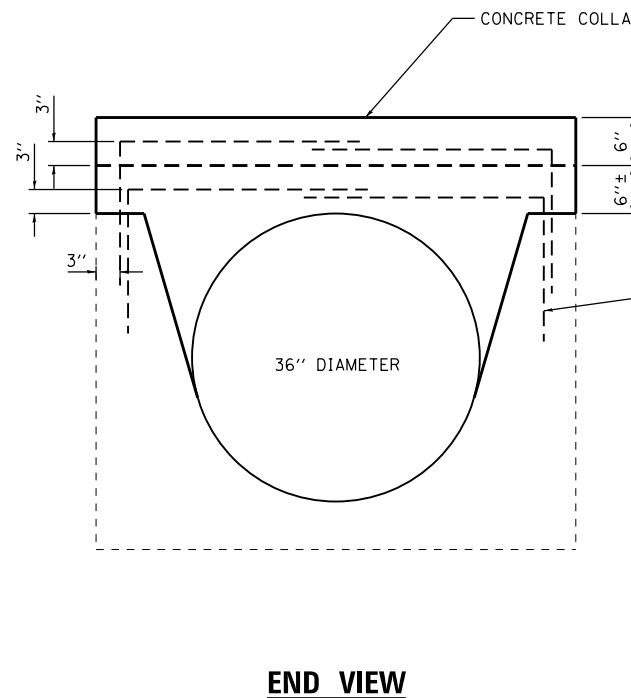
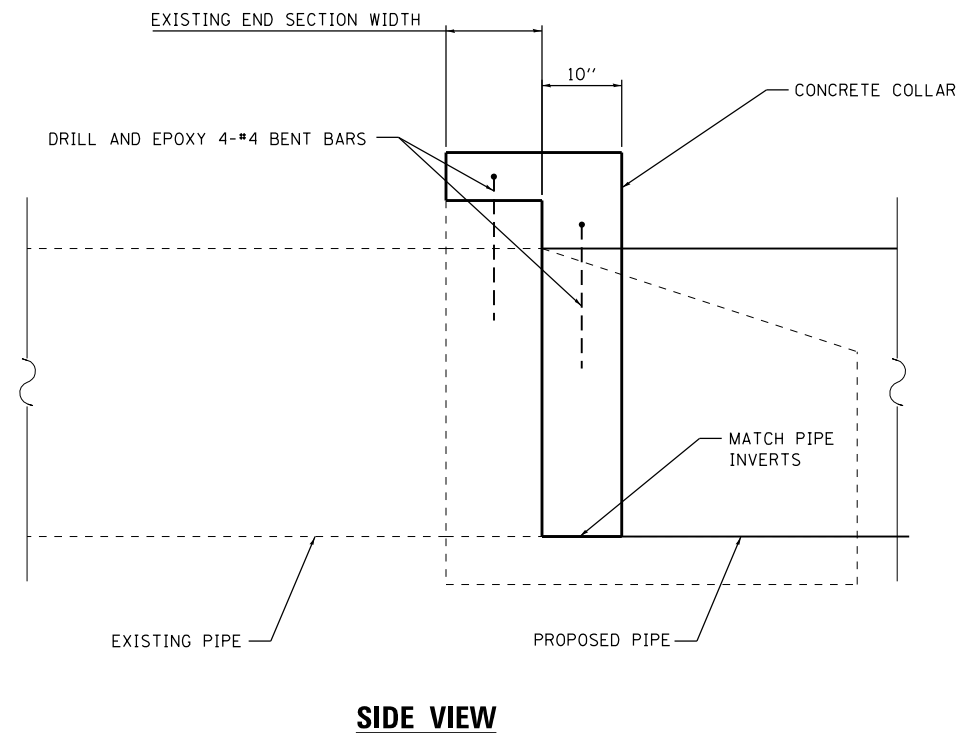
F.A. RTÉ. SECTION COUNTY TOTAL SHEETS SHEET NO.  
 17-00140-00-GR MONTGOMERY 15 5  
 CONTRACT NO. 93739  
 ILLINOIS FED. AID PROJECT



**EXISTING END SECTION**  
EXISTING DIMENSIONS ARE APPROXIMATE.



**#4 BENT BARS**



**CONCRETE COLLAR**  
EXISTING DIMENSIONS ARE APPROXIMATE.

**GENERAL NOTES**

1. THIS DETAIL IS TO BE USED AT THE PIPE CULVERT EXTENSION UNDER THE FIELD ENTRANCE NORTHEAST OF STRUCTURE 068-3218.
2. CLASS SI CONCRETE SHALL BE USED THROUGHOUT.
3. CONCRETE COLLARS WILL BE PAID FOR AT THE CONTRACT UNIT PRICE, PER EACH, FOR CONCRETE COLLARS INCLUDING ALL MATERIAL AND LABOR SPECIFIED TO COMPLETE THE WORK IN PLACE.
4. SEE ALSO SPECIAL PROVISION.

**BILL OF MATERIAL**

LOCATION	ITEM	UNIT	QUANTITY
3218 NE	CONCRETE COLLAR	EACH	1

FILE NAME = I:\\_Jobs\2017\11\17\2019\_HSIP\_Grant\_Mon-Feb\Collar\17-029-3\06000000-eh-06-CONCRETE COLLAR.dgn

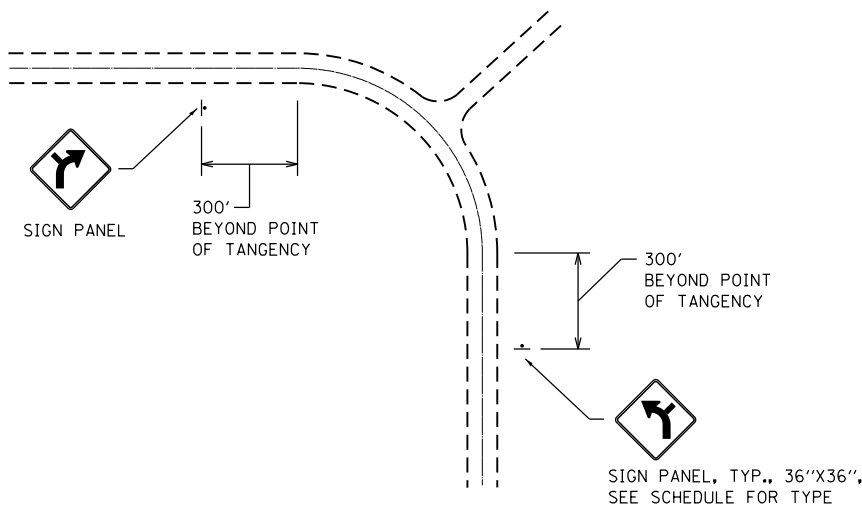
**Prairie Engineers, P.C.**  
www.prairieengineers.com  
professional design firm no. 184-005965  
© Copyright Prairie Engineers, P.C. 2018

USER NAME = jmosset	DESIGNED - SMA	REVISED -
	DRAWN - RNH	REVISED -
PLOT SCALE = 2.0000' / in.	CHECKED - SMA	REVISED -
PLOT DATE = 12/19/2019	DATE -	REVISED -

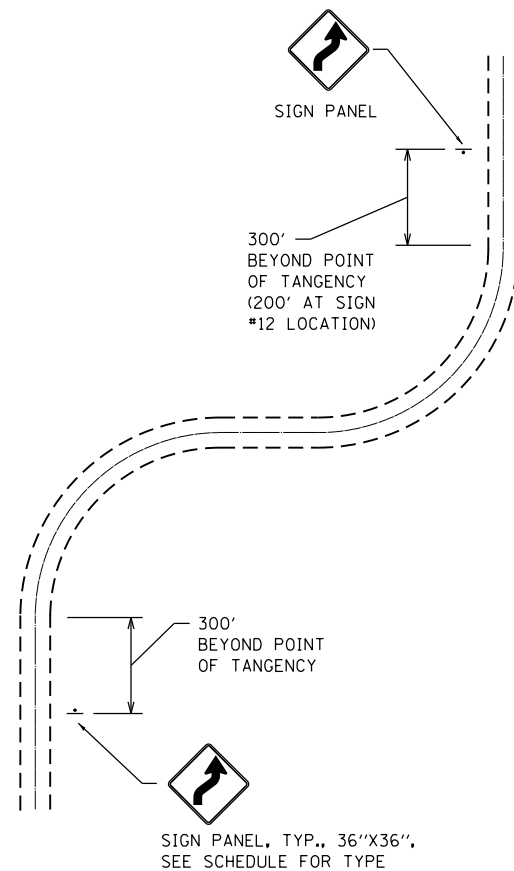
**STATE OF ILLINOIS  
DEPARTMENT OF TRANSPORTATION**

<b>CONCRETE COLLAR</b>			
SCALE:	SHEET	OF SHEETS	STA. TO STA.

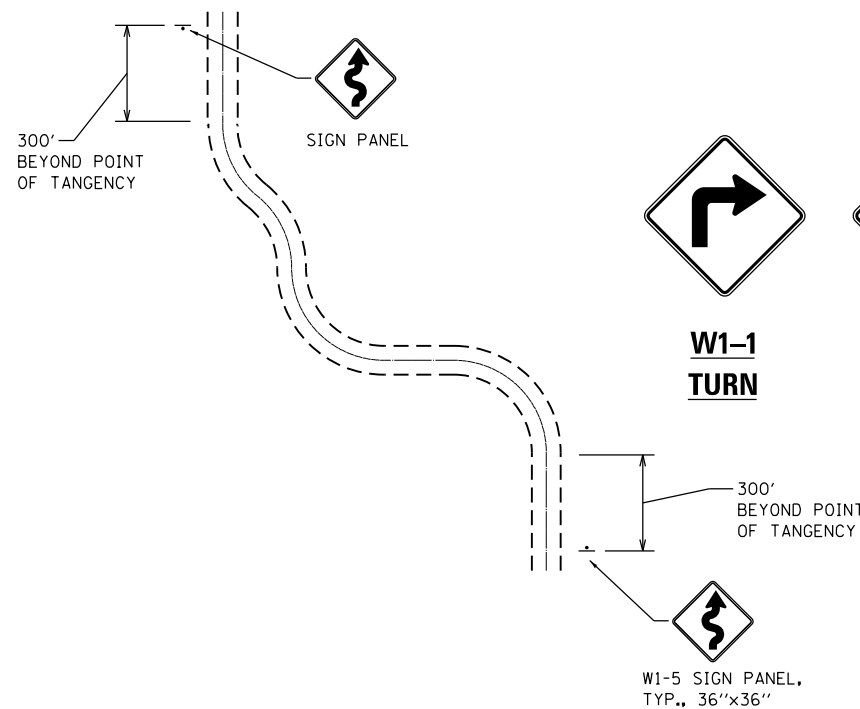
F.A. RTE.	SECTION	COUNTY	TOTAL SHEETS	SHEET NO.
	17-00140-00-GR	MONTGOMERY	15	6
CONTRACT NO. 93739				
ILLINOIS FED. AID PROJECT				



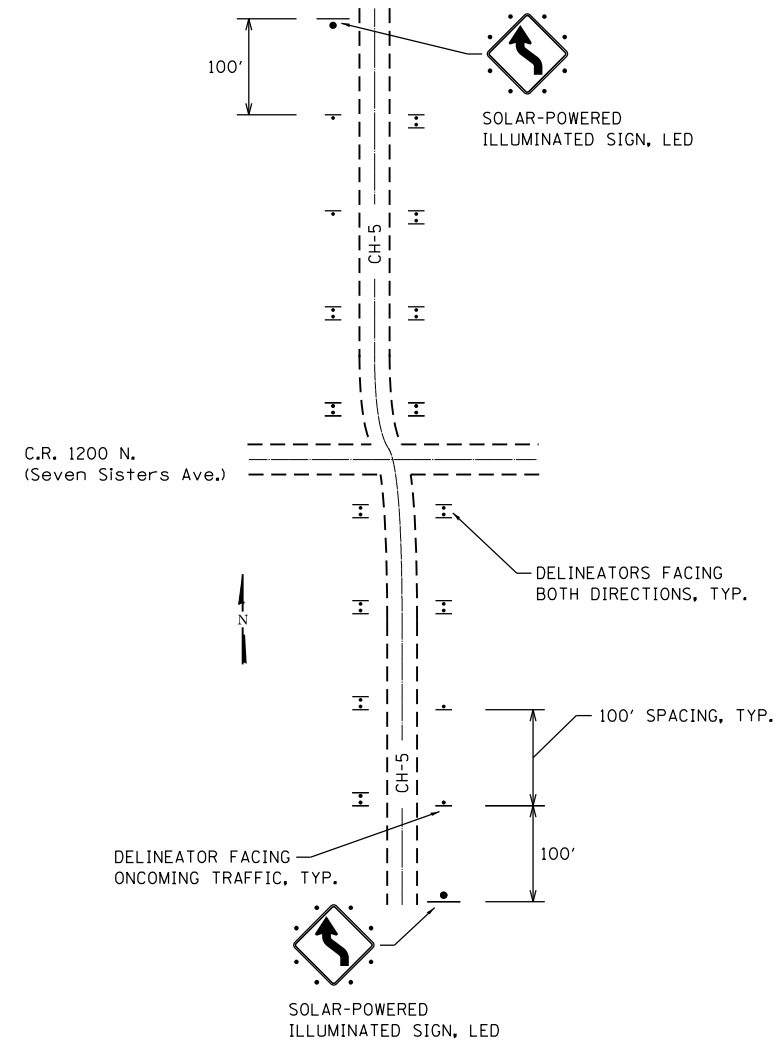
**TYPICAL CURVE /TURN LOCATIONS**



**TYPICAL REVERSE CURVE /TURN LOCATIONS**



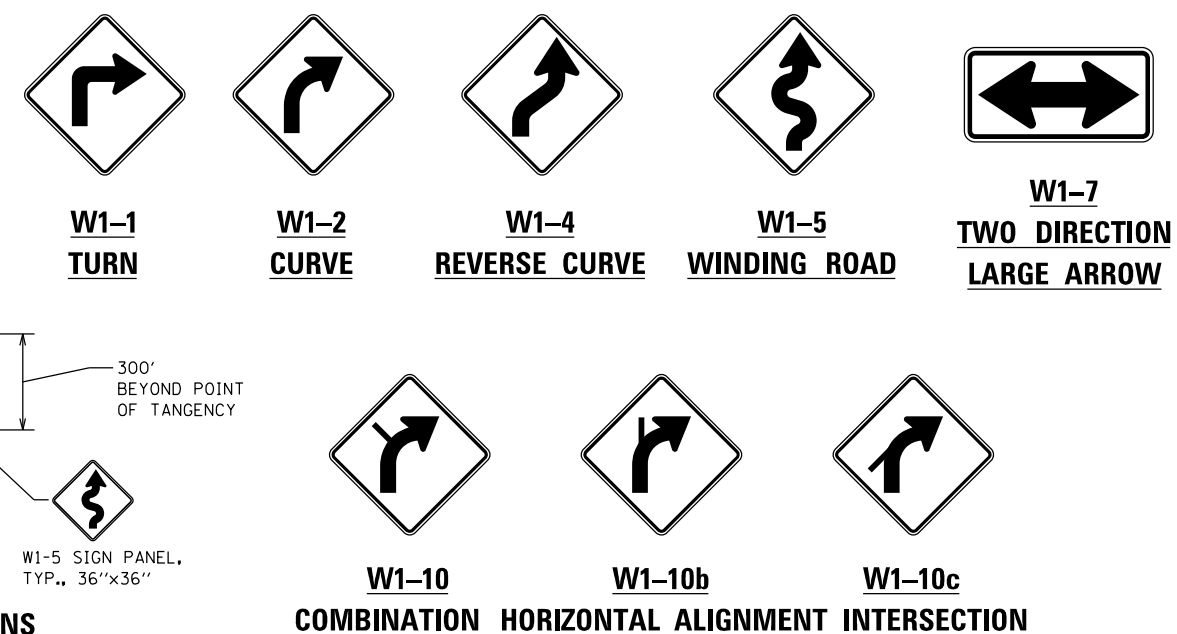
**TYPICAL WINDING ROAD LOCATIONS**



**SIGN & DELINEATOR LAYOUT AT SIGN LOCATION #1**

SIGN SCHEDULE							
LOCATION/ SIGN DESIGNATION*	TYPE	DESCRIPTION	SIGN PANEL T1 (SQ FT)	TELESCOPING STEEL SIGN SUPPORT (FOOT)	DELINEATORS (EACH)	REMOVE SIGN PANEL (SQ FT)	SOLAR PWR ILLUM SIGN, LED (EACH)
CH 5							
SIGN #1	W1-4 (L)	ILLUMINATED REV CURVE	-	60	28	18	3
CH 6							
SIGN #2	W1-10 (R)	COMB HORIZ ALIGN INT	9	15	-	-	-
SIGN #2	W1-10 (L)	COMB HORIZ ALIGN INT	9	15	-	-	-
SIGN #14 **	W1-7	TWO-DIR. LARGE ARROW	5	15	-	-	-
CH 7							
SIGN #4	W1-10 (R)	COMB HORIZ ALIGN INT	9	15	-	-	-
SIGN #4	W1-10 (L)	COMB HORIZ ALIGN INT	9	15	-	-	-
SIGN #13	W1-10 (R)	COMB HORIZ ALIGN INT	9	15	-	-	-
SIGN #13	W1-10 (L)	COMB HORIZ ALIGN INT	9	15	-	-	-
CH 8							
SIGN #3	W1-10 (R)	COMB HORIZ ALIGN INT	9	15	-	-	-
SIGN #3	W1-10 (L)	COMB HORIZ ALIGN INT	9	15	-	-	-
CH 9							
SIGN #5	W1-5 x2	WINDING ROAD	18	30	-	-	-
SIGN #6	W1-10b	COMB HORIZ ALIGN INT	9	15	-	-	-
SIGN #6	W1-10c	COMB HORIZ ALIGN INT	9	15	-	-	-
CH 10							
SIGN #7	W1-1 (R)	TURN	9	15	-	-	-
SIGN #7	W1-1 (L)	TURN	9	15	-	-	-
SIGN #8	W1-1 (R)	TURN	9	15	-	-	-
SIGN #8	W1-1 (L)	TURN	9	15	-	-	-
SIGN #9	W1-1 (R)	TURN	9	15	-	-	-
SIGN #9	W1-1 (L)	TURN	9	15	-	-	-
CH 11							
SIGN #11	W1-4 (R)	REVERSE CURVE	9	15	-	-	-
SIGN #12	W1-4 (R)	REVERSE CURVE	9	15	-	-	-
CH 21							
SIGN #10	W1-4 (L) x2	REVERSE CURVE	18	30	-	-	-
<b>TOTAL</b>			<b>203</b>	<b>405</b>	<b>28</b>	<b>18</b>	<b>3</b>

\*FOR SIGN LOCATIONS, SEE MAPS ON SHEETS 12 AND 14.  
\*\* SEE SHEET 13 OF 15 FOR SKETCH SHOWING W1-7 SIGN LOCATION.



**COMBINATION HORIZONTAL ALIGNMENT INTERSECTION**

FILE NAME = I:\\_pba\2017\11\17029\_HSP\_Grant\_MontgomeryDept\17-029-3\0600000-ht-07-sign\_type\_and\_location\_legend.dgn

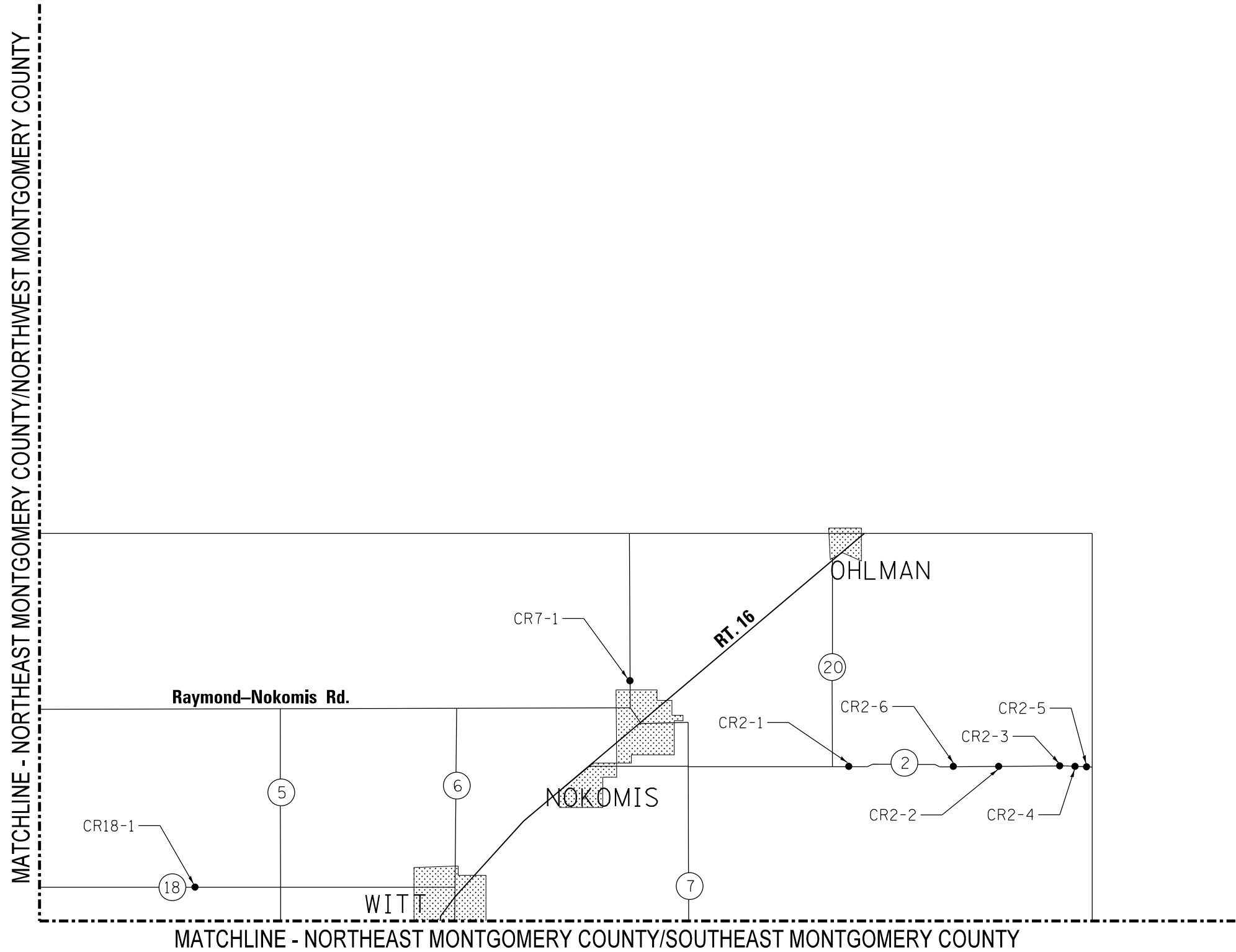
**Prairie Engineers, P.C.**  
www.prairieengineers.com  
professional design firm no. 184-005965  
© Copyright Prairie Engineers, P.C. 2018

USER NAME = jmosset	DESIGNED - SMA	REVISED -
PLOT SCALE = 2.0000' / in.	DRAWN - JLM	REVISED -
PLOT DATE = 12/19/2019	CHECKED - SMA	REVISED -
	DATE -	REVISED -

**STATE OF ILLINOIS  
DEPARTMENT OF TRANSPORTATION**

SIGN DETAILS AND QUANTITIES				
SCALE:	SHEET	OF	SHEETS	STA. TO STA.

F.A. RTE.	SECTION	COUNTY	TOTAL SHEETS	SHEET NO.
	17-00140-00-GR	MONTGOMERY	15	7
CONTRACT NO. 93739				
ILLINOIS FED. AID PROJECT				



FILE NAME = I:\\_Jobs\2017\11\17029\_HSP\_Grant\_MontCoByDept\17-029-3\06000000-sh1-08-Location\_map-rwdgn

**Prairie Engineers, P.C.**  
 www.prairieengineers.com  
 professional design firm no. 184-005965  
 © Copyright Prairie Engineers, P.C. 2018

USER NAME = jmosset	DESIGNED - SMA	REVISED -
	DRAWN - JLM	REVISED -
PLOT SCALE = 2.0000' / in.	CHECKED - SMA	REVISED -
PLOT DATE = 12/19/2019	DATE -	REVISED -

**STATE OF ILLINOIS  
 DEPARTMENT OF TRANSPORTATION**

**LOCATION MAP  
 NORTHEAST MONTGOMERY COUNTY**

SCALE: SHEET OF SHEETS STA. TO STA.

F.A. RTE.	SECTION	COUNTY	TOTAL SHEETS	SHEET NO.
	17-00140-00-GR	MONTGOMERY	15	8
CONTRACT NO. 93739				
ILLINOIS FED. AID PROJECT				



LOCATION			GUARDRAIL REMOVAL	TRAFFIC BARRIER TERMINAL TYPE 1 (SPECIAL) TANGENT	TRAFFIC BARRIER TERMINAL TYPE 1 (SPECIAL) FLARED	TRAFFIC BARRIER TERMINAL, TYPE 6A	TERMINAL MARKER - DIRECT APPLIED	STEEL PLATE BEAM GUARDRAIL TYPE A 6' POSTS	VERTICAL ADJUSTMENT OF GUARDRAIL	EARTH EXCAVATION	FURNISHED EXCAVATION	SEEDING, CLASS 2 (SPECIAL)	PERIMETER EROSION BARRIER	TEMPORARY DITCH CHECK	INLET AND PIPE PROTECTION	PIPE CULVERTS CLASS D		REPAIR TRAFFIC BARRIER TERMINAL, TYPE 1 SPECIAL (TAN)	
ROUTE	NAME (STR. NO. / LOCATION)	QUADRANT														FOOT	EACH		EACH
NORTHEAST MONTGOMERY COUNTY																			
CR2-1A	OCONEE AVE. ( 3342)	SW	-	-	-	-	-	-	-	-	-	-	-	-	-	-	-	-	1
CR2-1B	OCONEE AVE. ( 3342)	NW	-	-	-	-	-	-	-	-	-	-	-	-	-	-	-	-	1
CR2-2A	OCONEE AVE. ( 3298)	NE	25	1	-	-	1	25	12.5	71 <sup>2</sup>	-	0.04	-	8	-	-	-	-	-
CR2-2B	OCONEE AVE. ( 3298)	SW	25	1	-	-	1	-	12.5	11 <sup>2</sup>	6	0.03	-	8	-	-	-	-	-
CR2-3A	OCONEE AVE. ( 3299)	NE	50	1	-	-	1	-	12.5	-	7	0.02	83	-	-	-	-	-	-
CR2-3B	OCONEE AVE. ( 3299)	SW	50	1	-	-	1	-	12.5	33 <sup>2</sup>	-	0.04	-	8	-	-	-	-	-
CR2-4A	OCONEE AVE. ( 3270)	NE	50	1	-	-	1	-	12.5	355 <sup>2</sup>	-	0.12	-	8	-	-	-	-	-
CR2-4B	OCONEE AVE. ( 3270)	SW	50	1	-	-	1	-	12.5	25 <sup>2</sup>	-	0.03	-	8	-	-	-	-	-
CR2-5A	OCONEE AVE. ( 3306)	NE	25	1	-	-	1	-	12.5	98 <sup>2</sup>	-	0.07	-	8	-	-	-	-	-
CR2-5B	OCONEE AVE. ( 3306)	SW	50	1	-	-	1	-	12.5	-	9	0.02	83	-	-	-	-	-	-
CR2-6A	OCONEE AVE. (500' E. OF E. 28TH RD.)	NE	25	1	-	-	1	50	12.5	-	129	0.03	-	8	1	-	63	-	-
CR2-6B	OCONEE AVE. (500' E. OF E. 28TH RD.)	NW	50	1	-	-	1	-	12.5	86 <sup>2</sup>	-	0.06	-	8	-	-	-	-	-
CR2-6C	OCONEE AVE. (500' E. OF E. 28TH RD.)	SW	50	1	-	-	1	-	12.5	5 <sup>2</sup>	8	0.02	-	8	-	-	-	-	-
CR2-6D	OCONEE AVE. (500' E. OF E. 28TH RD.)	SE	25	1	-	-	1	-	12.5	13 <sup>2</sup>	4	0.03	-	8	-	-	-	-	-
CR7-1A	TAYLORVILLE RD. ( 0030)	NE	50	1	-	-	1	-	12.5	-	60	0.02	-	8	1	-	50	-	-
CR7-1B	TAYLORVILLE RD. ( 0030)	SE	50	1	-	-	1	-	12.5	-	15	0.02	-	8	1	-	41	-	-
CR7-1C	TAYLORVILLE RD. ( 0030)	SW	50	1	-	-	1	-	12.5	-	30	0.02	-	8	1	-	45	-	-
CR7-1D	TAYLORVILLE RD. ( 0030)	NW	25	1	-	-	1	-	12.5	-	34	0.02	-	8	1	-	48	-	-
CR18-1A	WITT AVE. ( 3332)	SW	-	-	-	-	-	-	-	-	-	-	-	-	-	-	-	-	1
<b>NORTHEAST MONTGOMERY COUNTY TOTAL</b>			<b>650</b>	<b>16</b>	<b>0</b>	<b>0</b>	<b>16</b>	<b>75</b>	<b>200</b>	<b>697</b>	<b>302</b>	<b>0.59</b>	<b>166</b>	<b>112</b>	<b>5</b>	<b>41</b>	<b>206</b>	<b>3</b>	

- NO SHOULDER WIDENING REQUIRED.
- REGRADE DITCH.
- REQUIRES 25 FT LONG TERMINAL.
- NO IMPROVEMENT, EXISTING TERMINAL TO REMAIN IN PLACE.
- REMOVE SHOES AS NECESSARY AND USE NEW GUARDRAIL TO CONNECT EXISTING GUARDRAILS AT NW(S) AND NW SIDEROAD (S).
- QUADRANTS LABELED AS IF A NORTH/SOUTH ROUTE.
- QUADRANTS LABELED AS IF AN EAST/WEST ROUTE.
- TERMINAL REQUIRES SHORT RADIUS FOR LAST 25', OR USE SHORTER 25' TERMINAL WITH 25' SHORT-RADIUS GUARDRAIL (25'R, TO BE INCLUDED IN COST OF TERMINAL).
- REMOVAL LENGTH INCLUDES APPROXIMATELY 30' PLUS APPROXIMATELY 20' ALREADY BROKEN OFF.
- REPLACE MOST DAMAGED GUARDRAIL LENGTHS ON CORRESPONDING SIDE OF ROADWAY (OTHER THAN 50' END TERMINALS). VERTICAL ADJUSTMENT OF EXISTING GUARDRAIL IS REQUIRED ON EACH END OF REPLACEMENT GUARDRAIL FOR TRANSITION OF NEW HEIGHT.

FILE NAME = I:\\_gbs\2017\2017029 HSP Grant MontCoByDept\17-029-3\06000000-eh-09-500-NE.dgn

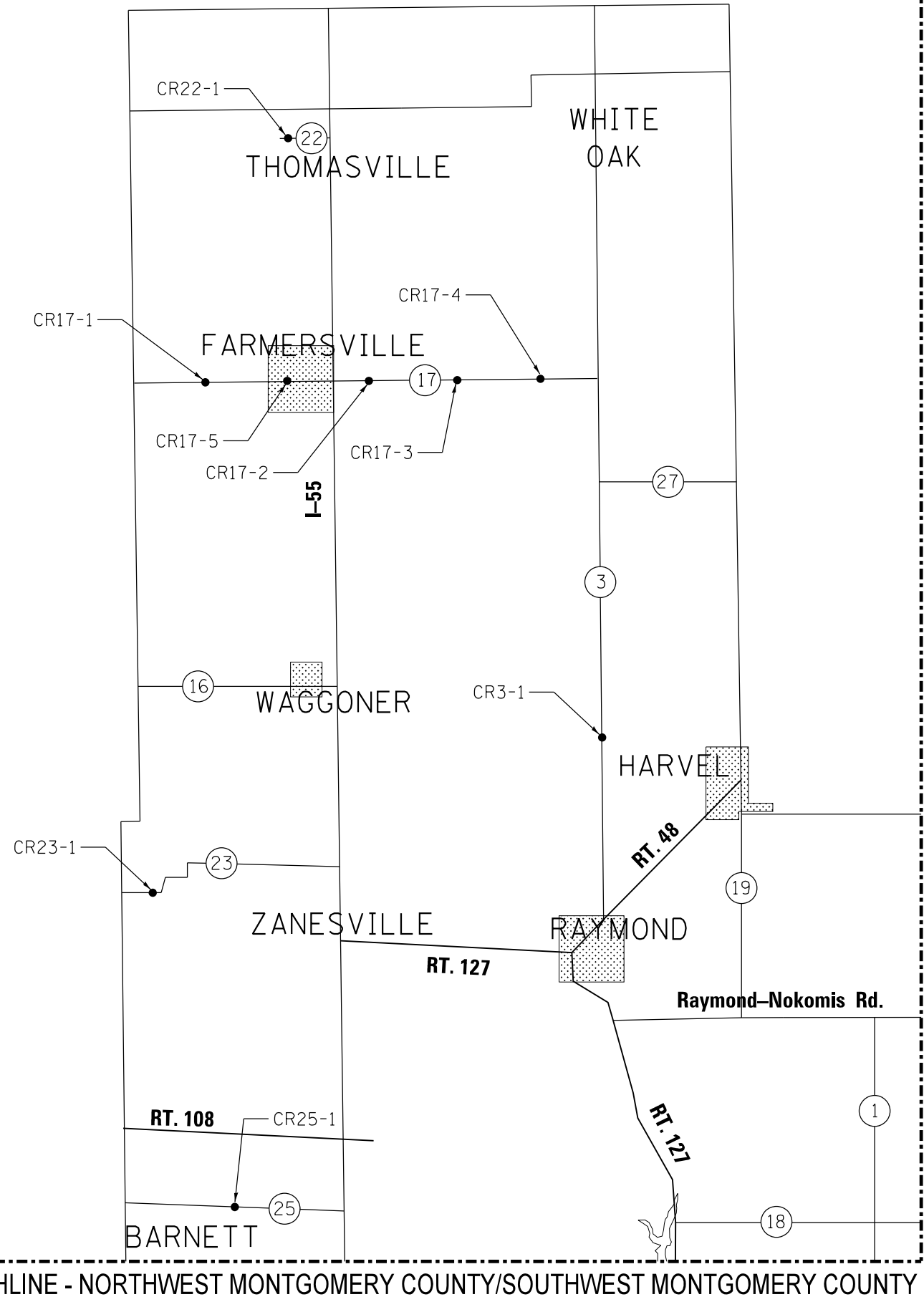
<b>Prairie Engineers, P.C.</b> www.prairieengineers.com professional design firm no. 184-005965 © Copyright Prairie Engineers, P.C. 2018	USER NAME = jmosset	DESIGNED - SMA	REVISED -
	DRAWN - JLM	REVISIONS -	
	PLOT SCALE = 2.0000' / in.	CHECKED - SMA	REVISED -
	PLOT DATE = 12/19/2019	DATE -	REVISED -

**STATE OF ILLINOIS  
DEPARTMENT OF TRANSPORTATION**

<b>SCHEDULE OF QUANTITIES NORTHEAST MONTGOMERY COUNTY</b>			
SCALE:	SHEET	OF	SHEETS
	STA.	TO	STA.

F.A. RTE.	SECTION	COUNTY	TOTAL SHEETS	SHEET NO.
	17-00140-00-GR	MONTGOMERY	15	9
CONTRACT NO. 93739				
ILLINOIS FED. AID PROJECT				

FILE NAME = I:\\_gbs\2017\11\17029\_HSP\_Grant\_MontCoByDept\17-029-3\0600000-sh-10-location\_map-nwdgn



MATCHLINE - NORTHWEST MONTGOMERY COUNTY/NORTHEAST MONTGOMERY COUNTY



**Prairie Engineers, P.C.**  
 www.prairieengineers.com  
 professional design firm no. 184-005965  
 © Copyright Prairie Engineers, P.C. 2018

USER NAME = jmosset	DESIGNED - SMA	REVISED -
DRAWN - JLM	REVISED -	
PLOT SCALE = 2.0000' / in.	CHECKED - SMA	REVISED -
PLOT DATE = 12/19/2019	DATE -	REVISED -

**STATE OF ILLINOIS  
 DEPARTMENT OF TRANSPORTATION**

<b>LOCATION MAP NORTHWEST MONTGOMERY COUNTY</b>				
SCALE:	SHEET	OF	SHEETS	STA. TO STA.

F.A. RTE.	SECTION	COUNTY	TOTAL SHEETS	SHEET NO.
	17-00140-00-GR	MONTGOMERY	15	10
CONTRACT NO. 93739				
ILLINOIS FED. AID PROJECT				

LOCATION	GUARDRAIL REMOVAL	TRAFFIC BARRIER TERMINAL TYPE 1 (SPECIAL) TANGENT	TRAFFIC BARRIER TERMINAL TYPE 1 (SPECIAL) FLARED	TRAFFIC BARRIER TERMINAL, TYPE 6A	TERMINAL MARKER - DIRECT APPLIED	STEEL PLATE BEAM GUARDRAIL TYPE A 6' POSTS	VERTICAL ADJUSTMENT OF GUARDRAIL	EARTH EXCAVATION	FURNISHED EXCAVATION	SEEDING, CLASS 2 (SPECIAL)	PERIMETER EROSION BARRIER	TEMPORARY DITCH CHECK	INLET AND PIPE PROTECTION	PIPE CULVERTS CLASS D		REPAIR TRAFFIC BARRIER TERMINAL, TYPE 1 SPECIAL (TAN)
														15"	18"	
ROUTE NAME (STR. NO. / LOCATION) QUADRANT	FOOT	EACH	EACH	EACH	EACH	FOOT	FOOT	CU YD	CU YD	ACRE	FOOT	FOOT	EACH	FOOT	FOOT	EACH
NORTHWEST MONTGOMERY COUNTY																
CR3-1A BLACK DIAMOND TR. (5049) NE	50	1	-	-	1	-	12.5	-	<1	0.01	83	-	-	-	-	-
CR3-1B BLACK DIAMOND TR. (5049) SE	50	1	-	-	1	-	12.5	-	4	0.01	83	-	-	-	-	-
CR3-1C BLACK DIAMOND TR. (5049) SW	50	1	-	-	1	-	12.5	-	2	0.01	83	-	-	-	-	-
CR3-1D BLACK DIAMOND TR. (5049) NW	50	1	-	-	1	-	12.5	-	3	0.01	83	-	-	-	-	-
CR17-1A MINE AVE. (3313) SW	50	1	-	-	1	-	12.5	-	8	0.02	83	-	-	-	-	-
CR17-1B MINE AVE. (3313) NW	25	1	-	-	1	50	12.5	32 <sup>2</sup>	-	0.03	-	8	-	-	-	-
CR17-1C MINE AVE. (3313) SE	25	1	-	-	1	50	12.5	111 <sup>2</sup>	-	0.05	-	8	-	-	-	-
CR17-1D MINE AVE. (3313) NE	25	1	-	-	1	-	12.5	-	6	0.02	83	-	-	-	-	-
CR17-2A MINE AVE. (3317) SW	-	-	-	-	-	-	-	-	- <sup>1</sup>	-	-	-	-	-	-	1
CR17-3A MINE AVE. (3318) NE	25	-	1	-	1	-	12.5	-	6	0.02	83	-	-	-	-	-
CR17-3B MINE AVE. (3318) SE	37.5	-	1	-	1	-	12.5	-	1	0.02	83	-	-	-	-	-
CR17-3C MINE AVE. (3318) NW	37.5	-	1	-	1	-	12.5	-	2	0.02	83	-	-	-	-	-
CR17-3D MINE AVE. (3318) SW	25	-	1	-	1	-	12.5	-	3	0.02	83	-	-	-	-	-
CR17-4A MINE AVE. (3237) NE	25	1	-	-	1	-	12.5	-	5	0.01	83	-	-	-	-	-
CR17-4B MINE AVE. (3237) SE	25	1	-	-	1	-	12.5	-	<1	0.01	83	-	-	-	-	-
CR17-4C MINE AVE. (3237) NW	25	1	-	-	1	-	12.5	31 <sup>2</sup>	-	0.03	-	8	-	-	-	-
CR17-4D MINE AVE. (3237) SW	25	1	-	-	1	-	12.5	-	5	0.02	83	-	-	-	-	-
CR17-5A MINE AVE. (AT CEMETARY) NE	-	-	-	-	-	-	-	-	- <sup>1</sup>	-	-	-	-	-	-	1
CR22-1A THOMASVILLE TR. (3260) NE	25	-	1	-	1	-	12.5	-	- <sup>1</sup>	-	-	-	-	-	-	-
CR22-1B THOMASVILLE TR. (3260) SW	25	1	-	-	1	-	12.5	-	5	0.01	83	-	-	-	-	-
CR23-1A GOBY TR. (3272) NE	25	1	-	-	1	-	12.5	-	- <sup>1</sup>	-	-	-	-	-	-	-
CR23-1B GOBY TR. (3272) SW	25	1	-	-	1	-	12.5	-	6	0.02	83	-	-	-	-	-
CR25-1A N. 18TH AVE. (3344) NE	25	1	-	-	1	-	12.5	-	11	0.02	83	-	-	-	-	-
CR25-1B N. 18TH AVE. (3344) SW	25	1	-	-	1	-	12.5	-	2	0.02	83	-	-	-	-	-
<b>NORTHWEST MONTGOMERY COUNTY TOTAL</b>	<b>700</b>	<b>17</b>	<b>5</b>	<b>0</b>	<b>22</b>	<b>100</b>	<b>275</b>	<b>174</b>	<b>71</b>	<b>0.38</b>	<b>1411</b>	<b>24</b>	<b>0</b>	<b>0</b>	<b>0</b>	<b>2</b>

- NO SHOULDER WIDENING REQUIRED.
- REGRADE DITCH.
- REQUIRES 25 FT LONG TERMINAL.
- NO IMPROVEMENT. EXISTING TERMINAL TO REMAIN IN PLACE.
- REMOVE SHOES AS NECESSARY AND USE NEW GUARDRAIL TO CONNECT EXISTING GUARDRAILS AT NW(S) AND NW SIDEROAD (S).
- QUADRANTS LABELED AS IF A NORTH/SOUTH ROUTE.
- QUADRANTS LABELED AS IF AN EAST/WEST ROUTE.
- TERMINAL REQUIRES SHORT RADIUS FOR LAST 25', OR USE SHORTER 25' TERMINAL WITH 25' SHORT-RADIUS GUARDRAIL (25'R, TO BE INCLUDED IN COST OF TERMINAL).
- REMOVAL LENGTH INCLUDES APPROXIMATELY 30' PLUS APPROXIMATELY 20' ALREADY BROKEN OFF.
- REPLACE MOST DAMAGED GUARDRAIL LENGTHS ON CORRESPONDING SIDE OF ROADWAY (OTHER THAN 50' END TERMINALS). VERTICAL ADJUSTMENT OF EXISTING GUARDRAIL IS REQUIRED ON EACH END OF REPLACEMENT GUARDRAIL FOR TRANSITION OF NEW HEIGHT.

FILE NAME = I:\\_jbs\2017\21117029 HSP Grant MontCohy\Dept\17-029-3\06000000-eh-t-11-500-NW.dgn

**Prairie Engineers, P.C.**  
 www.prairieengineers.com  
 professional design firm no. 184-005965  
 © Copyright Prairie Engineers, P.C. 2018

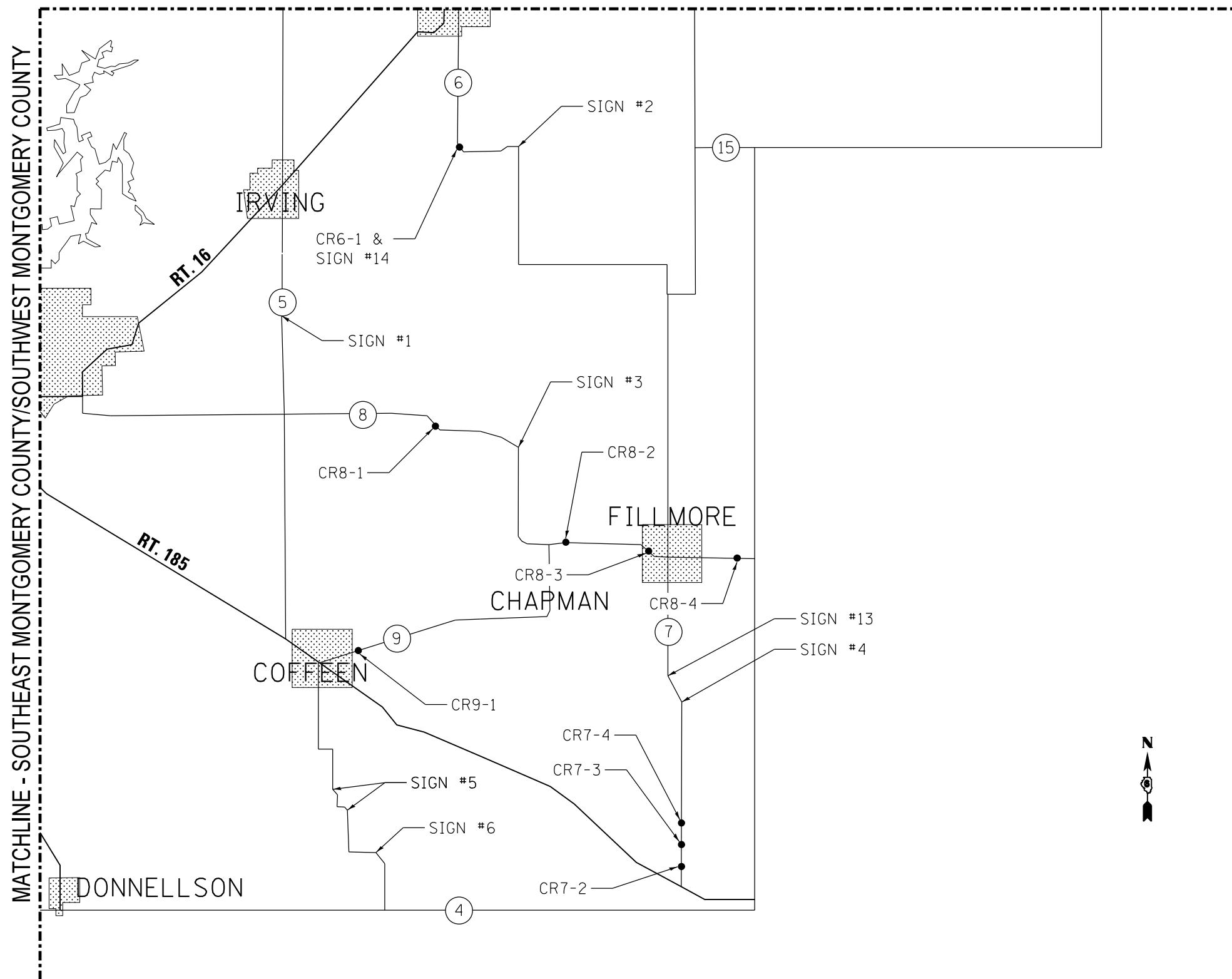
USER NAME = jmosset	DESIGNED - SMA	REVISED -
	DRAWN - JLM	REVISED -
PLOT SCALE = 2.0000' / in.	CHECKED - SMA	REVISED -
PLOT DATE = 12/19/2019	DATE -	REVISED -

**STATE OF ILLINOIS  
 DEPARTMENT OF TRANSPORTATION**

<b>SCHEDULE OF QUANTITIES</b>			
<b>NORTHWEST MONTGOMERY COUNTY</b>			
SCALE:	SHEET	OF SHEETS	STA. TO STA.

F.A. RTE.	SECTION	COUNTY	TOTAL SHEETS	SHEET NO.
	17-00140-00-GR	MONTGOMERY	15	11
CONTRACT NO. 93739				
ILLINOIS FED. AID PROJECT				

MATCHLINE - SOUTHEAST MONTGOMERY COUNTY/NORTHEAST MONTGOMERY COUNTY



FILE NAME = I:\\_gbs\2017\11\17029\_HSP\_Grant\_MontCoHighDept\17-029-3\06000000-sh-12-location\_map-SE.dgn

**Prairie Engineers, P.C.**  
 www.prairieengineers.com  
 professional design firm no. 184-005965  
 Copyright Prairie Engineers, P.C., 2016

USER NAME = jmasst	DESIGNED - SMA	REVISED -
DRAWN - JLM	REVISOR -	REVISED -
PLOT SCALE = 2.0000' / in.	CHECKED - SMA	REVISED -
PLOT DATE = 12/19/2019	DATE -	REVISED -

**STATE OF ILLINOIS  
 DEPARTMENT OF TRANSPORTATION**

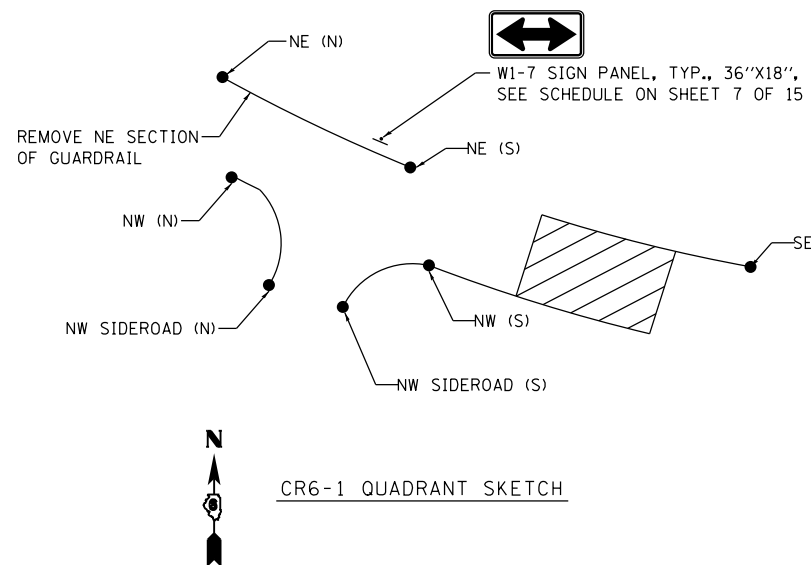
<b>LOCATION MAP          SOUTHEAST MONTGOMERY COUNTY</b>			
SCALE:	SHEET	OF	SHEETS
	STA.	TO	STA.

F.A. RTE.	SECTION	COUNTY	TOTAL SHEETS	SHEET NO.
	17-00140-00-GR	MONTGOMERY	15	12
CONTRACT NO. 93739				
ILLINOIS FED. AID PROJECT				

LOCATION	GUARDRAIL REMOVAL	TRAFFIC BARRIER TERMINAL TYPE 1 (SPECIAL) TANGENT	TRAFFIC BARRIER TERMINAL TYPE 1 (SPECIAL) FLARED	TRAFFIC BARRIER TERMINAL, TYPE 6A	TERMINAL MARKER - DIRECT APPLIED	STEEL PLATE BEAM GUARDRAIL TYPE A 6' POSTS	VERTICAL ADJUSTMENT OF GUARDRAIL	EARTH EXCAVATION	FURNISHED EXCAVATION	SEEDING, CLASS 2 (SPECIAL)	PERIMETER EROSION BARRIER	TEMPORARY DITCH CHECK	INLET AND PIPE PROTECTION	PIPE CULVERTS CLASS D		REPAIR TRAFFIC BARRIER TERMINAL, TYPE 1 SPECIAL (TAN)	
														15"	18"		
ROUTE NAME (STR. NO. / LOCATION)	QUADRANT	FOOT	EACH	EACH	EACH	EACH	FOOT	FOOT	CU YD	CU YD	ACRE	FOOT	FOOT	EACH	FOOT	FOOT	EACH
SOUTHEAST MONTGOMERY COUNTY																	
CR6-1A	WITT TR. (3235) SE <sup>6</sup>	50	1	-	-	1	-	12.5	-	5	0.02	83	-	-	-	-	-
CR6-1B	WITT TR. (3235) NW SIDEROAD (S) <sup>6</sup>	12.5	-	-	-	-	12.5 <sup>5</sup>	12.5	- <sup>1</sup>	-	-	-	-	-	-	-	-
CR6-1C	WITT TR. (3235) NE (S) <sup>6</sup>	65	-	-	-	-	-	-	-	-	-	-	-	-	-	-	-
CR6-1D	WITT TR. (3235) NE (N) <sup>6</sup>	-	-	-	-	-	-	-	-	-	-	-	-	-	-	-	-
CR6-1E	WITT TR. (3235) NW (N) <sup>6</sup>	12.5	1	-	-	1	-	12.5	122 <sup>2</sup>	-	0.06	-	8	-	-	-	-
CR6-1F	WITT TR. (3235) NW SIDEROAD (N) <sup>6</sup>	- <sup>4</sup>	-	-	-	-	-	-	-	-	-	-	-	-	-	-	-
CR6-1G	WITT TR. (3235) NW (S) <sup>6</sup>	25	-	-	-	-	25 <sup>5</sup>	12.5	- <sup>1</sup>	-	-	-	-	-	-	-	-
CR7-2A	BURG RD. (1500 N. OF IL-185) SE	-	-	-	-	-	-	-	- <sup>1</sup>	-	-	-	-	-	-	-	1
CR7-3A	BURG RD. (5000) NE	50	-	1 <sup>8</sup>	-	1	-	12.5	- <sup>1</sup>	-	-	-	-	-	-	-	-
CR7-3B	BURG RD. (5000) NW	50 <sup>9</sup>	1	-	-	1	-	12.5	-	4	0.01	83	-	-	-	-	-
CR7-4A	BURG RD. (800 N. OF LITTLE LANE) NW	-	-	-	-	-	-	-	- <sup>1</sup>	-	-	-	-	-	-	-	1
CR7-4B	BURG RD. (800 N. OF LITTLE LANE) SE	-	-	-	-	-	-	-	- <sup>1</sup>	-	-	-	-	-	-	-	1
CR8-1A	FILLMORE TR. (3358) SE <sup>6</sup>	25	1	-	-	1	-	12.5	-	1	0.01	83	-	-	-	-	-
CR8-1B	FILLMORE TR. (3358) NW <sup>6</sup>	50	1	-	-	1	-	12.5	-	1	0.01	83	-	-	-	-	-
CR8-2A	FILLMORE TR. (3010) NE	50	1	-	-	1	-	12.5	- <sup>1</sup>	-	-	-	-	-	-	-	-
CR8-2B	FILLMORE TR. (3010) SE	50	1	-	-	1	-	12.5	-	1	0.01	83	-	-	-	-	-
CR8-2C	FILLMORE TR. (3010) SW FIELD ENTR (E)	- <sup>4</sup>	-	-	-	-	-	-	-	-	-	-	-	-	-	-	-
CR8-2D	FILLMORE TR. (3010) SW FIELD ENTR (W)	- <sup>4</sup>	-	-	-	-	-	-	-	-	-	-	-	-	-	-	-
CR8-2E	FILLMORE TR. (3010) SW	25	1	-	-	1	12.5	12.5	- <sup>1</sup>	-	-	-	-	-	-	-	-
CR8-2F	FILLMORE TR. (3010) NW	50	1	-	-	1	-	12.5	-	1	0.01	83	-	-	-	-	-
CR8-3A	FILLMORE TR. (3011) NE <sup>7</sup>	25	1	-	-	1	12.5	12.5	2	0.01	83	-	-	-	-	-	-
CR8-3B	FILLMORE TR. (3011) SE <sup>7</sup>	50	1	-	-	1	12.5	12.5	1	0.01	83	-	-	-	-	-	-
CR8-3C	FILLMORE TR. (3011) SW <sup>7</sup>	50	1	-	-	1	-	12.5	<1	0.01	83	-	-	-	-	-	-
CR8-3D	FILLMORE TR. (3011) NW <sup>7</sup>	50	1	-	-	1	-	12.5	-	1	0.01	83	-	-	-	-	-
CR8-4A	FILLMORE TR. (1400' W. OF 2400 E. RD) NW	50	1	-	-	1	-	12.5	- <sup>1</sup>	-	-	-	-	-	-	-	-
CR8-4B	FILLMORE TR. (1400' W. OF 2400 E. RD) NE	25	1	-	-	1	-	12.5	2 <sup>2</sup>	5	0.03	-	8	-	-	-	-
CR8-4C	FILLMORE TR. (1400' W. OF 2400 E. RD) SW	25	1	-	-	1	-	12.5	-	5	0.02	83	-	-	-	-	-
CR8-4D	FILLMORE TR. (1400' W. OF 2400 E. RD) SE	50	1	-	-	1	-	12.5	- <sup>1</sup>	-	-	-	-	-	-	-	-
CR9-1A	CHAPMAN T. (3325) NE <sup>7</sup>	-	-	-	-	-	-	-	- <sup>1</sup>	-	-	-	-	-	-	-	1
<b>SOUTHEAST MONTGOMERY COUNTY TOTAL</b>		<b>840</b>	<b>17</b>	<b>1</b>	<b>0</b>	<b>18</b>	<b>62.5</b>	<b>250</b>	<b>124</b>	<b>28</b>	<b>0.22</b>	<b>913</b>	<b>16</b>	<b>0</b>	<b>0</b>	<b>0</b>	<b>4</b>

- NO SHOULDER WIDENING REQUIRED.
- REGRADE DITCH.
- REQUIRES 25 FT LONG TERMINAL.
- NO IMPROVEMENT. EXISTING TERMINAL TO REMAIN IN PLACE.
- REMOVE SHOES AS NECESSARY AND USE NEW GUARDRAIL TO CONNECT EXISTING GUARDRAILS AT NW(S) AND NW SIDEROAD (S).

- QUADRANTS LABELED AS IF A NORTH/SOUTH ROUTE.
- QUADRANTS LABELED AS IF AN EAST/WEST ROUTE.
- TERMINAL REQUIRES SHORT RADIUS FOR LAST 25', OR USE SHORTER 25' TERMINAL WITH 25' SHORT-RADIUS GUARDRAIL (25' R, TO BE INCLUDED IN COST OF TERMINAL).
- REMOVAL LENGTH INCLUDES APPROXIMATELY 30' PLUS APPROXIMATELY 20' ALREADY BROKEN OFF.
- REPLACE MOST DAMAGED GUARDRAIL LENGTHS ON CORRESPONDING SIDE OF ROADWAY (OTHER THAN 50' END TERMINALS). VERTICAL ADJUSTMENT OF EXISTING GUARDRAIL IS REQUIRED ON EACH END OF REPLACEMENT GUARDRAIL FOR TRANSITION OF NEW HEIGHT.



FILE NAME = I:\\_gbs\2017\11\17029 HSP Grant MontCohy\Dept\17-029-3\0600000-eh-13-500-SE.dgn

**Prairie Engineers, P.C.**  
www.prairieengineers.com  
professional design firm no. 184-005965  
© Copyright Prairie Engineers, P.C. 2018

USER NAME = jmosset	DESIGNED - SMA	REVISED -
PLOT SCALE = 2.0000' / in.	DRAWN - JLM	REVISED -
PLOT DATE = 12/19/2019	CHECKED - SMA	REVISED -
	DATE -	REVISED -

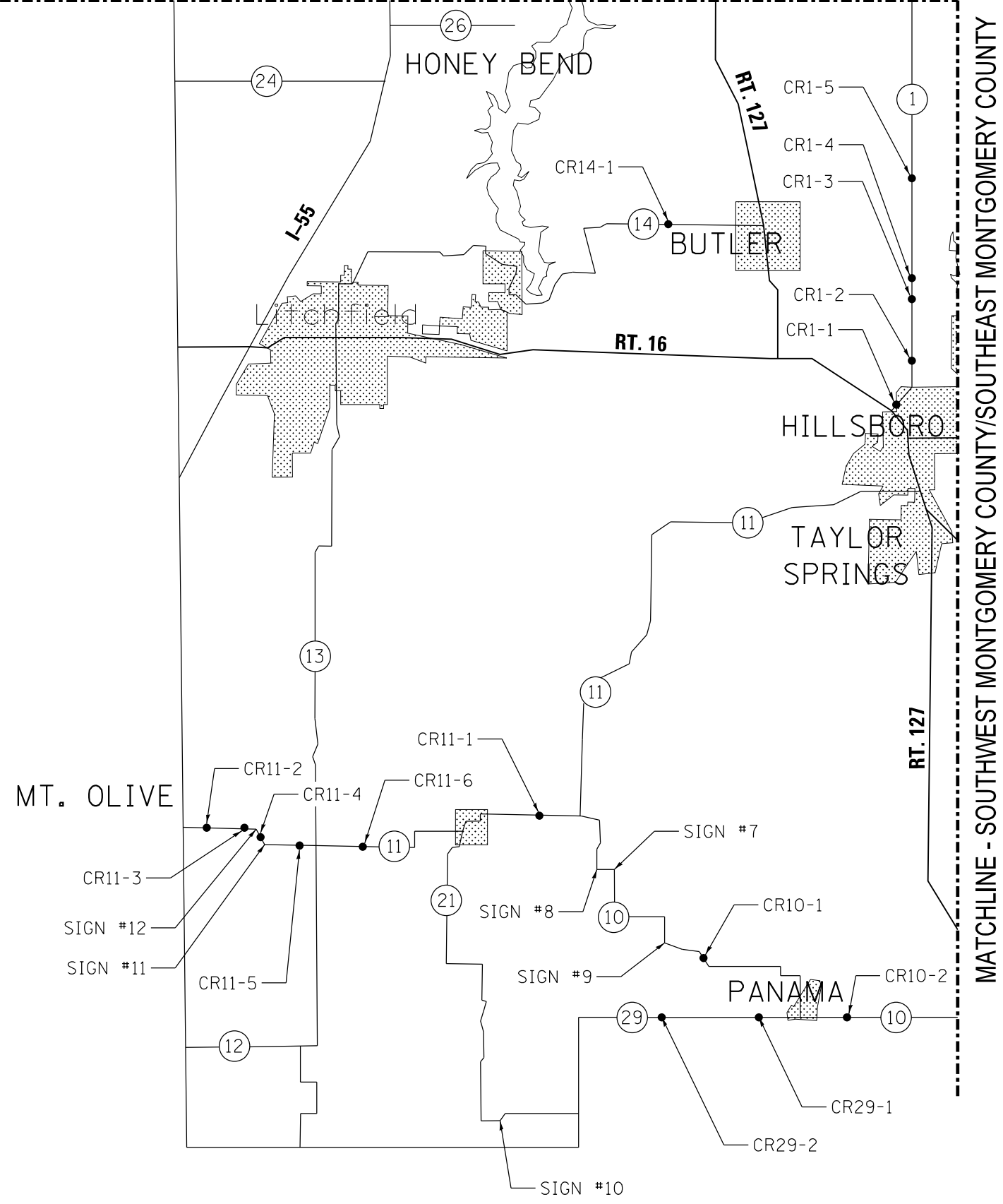
**STATE OF ILLINOIS  
DEPARTMENT OF TRANSPORTATION**

SCHEDULE OF QUANTITIES			
SOUTHEAST MONTGOMERY COUNTY			
SCALE:	SHEET	OF SHEETS	STA. TO STA.

F.A. RTE.	SECTION	COUNTY	TOTAL SHEETS	SHEET NO.
	17-00140-00-GR	MONTGOMERY	15	13
CONTRACT NO. 93739				
ILLINOIS FED. AID PROJECT				



MATCHLINE - SOUTHWEST MONTGOMERY COUNTY/NORTHWEST MONTGOMERY COUNTY



MATCHLINE - SOUTHWEST MONTGOMERY COUNTY/SOUTHWEST MONTGOMERY COUNTY

FILE NAME = I:\\_jbas\2017\11\17029\_HSP\_Grant\_MontCo Hwy Dept\17-029-3\06000000-sh-14-location\_map-SW.dgn

**Prairie Engineers, P.C.**  
 www.prairieengineers.com  
 professional design firm no. 184-005965  
 © Copyright Prairie Engineers, P.C. 2018

USER NAME = jmasst	DESIGNED - SMA	REVISED -
DRAWN - JLM	REVISED -	
PLOT SCALE = 2.0000' / in.	CHECKED - SMA	REVISED -
PLOT DATE = 12/19/2019	DATE -	REVISED -

**STATE OF ILLINOIS**  
**DEPARTMENT OF TRANSPORTATION**

**LOCATION MAP**  
**SOUTHWEST MONTGOMERY COUNTY**

SCALE: SHEET OF SHEETS STA. TO STA.

F.A. RTE.	SECTION	COUNTY	TOTAL SHEETS	SHEET NO.
	17-00140-00-GR	MONTGOMERY	15	14
CONTRACT NO. 93739				
ILLINOIS FED. AID PROJECT				

LOCATION				GUARDRAIL REMOVAL	TRAFFIC BARRIER TERMINAL TYPE 1 (SPECIAL) TANGENT	TRAFFIC BARRIER TERMINAL TYPE 1 (SPECIAL) FLARED	TRAFFIC BARRIER TERMINAL, TYPE 6A	TERMINAL MARKER - DIRECT APPLIED	STEEL PLATE BEAM GUARDRAIL TYPE A 6' POSTS	VERTICAL ADJUSTMENT OF GUARDRAIL	EARTH EXCAVATION	FURNISHED EXCAVATION	SEEDING, CLASS 2 (SPECIAL)	PERIMETER EROSION BARRIER	TEMPORARY DITCH CHECK	INLET AND PIPE PROTECTION	PIPE CULVERTS CLASS D			REPAIR TRAFFIC BARRIER TERMINAL, TYPE 1 SPECIAL (TAN)
ROUTE	NAME (STR. NO. / LOCATION)	QUADRANT	FOOT														EACH	EACH	EACH	
SOUTHWEST MONTGOMERY COUNTY																				
CR1-1A	NORTH RD. (3314)	NE	50	1	-	-	1	-	12.5	-	50	0.03	83	-	-	-	-	-	-	-
CR1-1B	NORTH RD. (3314)	SE	25	1	-	-	1	-	12.5	7 <sup>2</sup>	6	0.02	-	8	1	-	-	-	-	-
CR1-1C	NORTH RD. (3314)	SW	25	1 <sup>3</sup>	-	-	1	-	12.5	-	- <sup>1</sup>	-	-	-	1	-	-	-	-	-
CR1-1D	NORTH RD. (3314)	NW	50	1	-	-	1	-	12.5	-	- <sup>1</sup>	-	-	-	-	-	-	-	-	-
CR1-2A	NORTH RD. (900' N. OF BREMER LN.)	N	25	1	-	-	1	-	12.5	-	- <sup>1</sup>	-	-	-	-	-	-	-	-	-
CR1-2B	NORTH RD. (900' N. OF BREMER LN.)	S	- <sup>4</sup>	-	-	-	-	-	-	-	-	-	-	-	-	-	-	-	-	-
CR1-3A	NORTH RD. (100' N. OF SINGLETERRY LN.)	N	50	1	-	-	1	-	12.5	-	5	0.01	83	-	-	-	-	-	-	-
CR1-3B	NORTH RD. (100' N. OF SINGLETERRY LN.)	S	- <sup>4</sup>	-	-	-	-	-	-	-	-	-	-	-	-	-	-	-	-	-
CR1-4A	NORTH RD. (1100' N. OF SINGLETERRY LN.)	N	-	1	-	-	1	-	12.5	-	1	0.01	83	-	-	-	-	-	-	-
CR1-4B	NORTH RD. (1100' N. OF SINGLETERRY LN.)	S	25	1	-	-	1	37.5	12.5	-	1	0.01	83	-	-	-	-	-	-	-
CR1-5A	NORTH RD. (1700 N. OF 1400 N. RD.)	NW	50	1	-	-	1	-	12.5	-	14	0.02	-	8	1	41	-	-	-	-
CR1-5B	NORTH RD. (1700 N. OF 1400 N. RD.)	SW	- <sup>4</sup>	-	-	-	-	-	-	-	-	-	-	-	-	-	-	-	-	-
CR1-5C	NORTH RD. (1700 N. OF 1400 N. RD.)	NE	- <sup>4</sup>	-	-	-	-	-	-	-	-	-	-	-	-	-	-	-	-	-
CR1-5D	NORTH RD. (1700 N. OF 1400 N. RD.)	SE	50	1	-	-	1	-	12.5	-	28	0.02	-	8	1	-	47	-	-	-
CR10-1A	LONGBRIDGE TR. (3281)	NE <sup>6</sup>	25	1	-	-	1	-	12.5	-	72	0.09	117	-	-	-	-	-	-	-
CR10-1B	LONGBRIDGE TR. (3281)	SE <sup>6</sup>	25	1	-	-	1	-	12.5	-	- <sup>1</sup>	-	-	-	-	-	-	-	-	-
CR10-1C	LONGBRIDGE TR. (3281)	SW <sup>6</sup>	25	1	-	-	1	-	12.5	-	1	0.01	83	-	-	-	-	-	-	-
CR10-1D	LONGBRIDGE TR. (3281)	NW <sup>6</sup>	25	1	-	-	1	-	12.5	-	1	0.01	83	-	-	-	-	-	-	-
CR10-2A	DONNELSON AVE. (3218)	NE	28	1	-	1	1	50	-	-	93	0.02	-	8	1	-	-	36	-	-
CR10-2B	DONNELSON AVE. (3218)	SE	28	-	-	-	1	-	-	-	-	-	-	-	-	-	-	-	-	-
CR10-2C	DONNELSON AVE. (3218)	SW	28	1	-	1	1	112.5	-	6 <sup>2</sup>	13	0.04	83	-	-	-	-	-	-	-
CR10-2D	DONNELSON AVE. (3218)	NW	28	-	-	-	1	-	-	-	-	-	-	-	-	-	-	-	-	-
CR11-1A	WALSHVILLE TR. (3022)	NE	28	1	-	1	1	12.5	-	-	4	0.01	83	-	-	-	-	-	-	-
CR11-1B	WALSHVILLE TR. (3022)	SE	28	1	-	1	1	12.5	-	-	- <sup>1</sup>	-	-	-	-	-	-	-	-	-
CR11-1C	WALSHVILLE TR. (3022)	SW	28	1	-	1	1	12.5	-	-	2	0.01	83	-	-	-	-	-	-	-
CR11-1D	WALSHVILLE TR. (3022)	NW	-	1	-	1	1	12.5	-	-	- <sup>1</sup>	-	-	-	-	-	-	-	-	-
CR11-2A	MT. OLIVE TR. (4000' E. OF COUNTY LINE RD.)	NW	100	1	-	1	1	50	12.5	-	7	0.02	83	-	-	-	-	-	-	-
CR11-2B	MT. OLIVE TR. (4000' E. OF COUNTY LINE RD.)	NE	25	1	-	1	1	50	12.5	20 <sup>2</sup>	10	0.03	-	8	-	-	-	-	-	-
CR11-2C	MT. OLIVE TR. (4000' E. OF COUNTY LINE RD.)	SE	50	1	-	1	1	50	12.5	-	13	0.02	-	8	1	39	-	-	-	-
CR11-2D	MT. OLIVE TR. (4000' E. OF COUNTY LINE RD.)	SW	25	1	-	1	1	37.5	12.5	12 <sup>2</sup>	5	0.03	-	8	-	-	-	-	-	-
CR11-3A	MT. OLIVE TR. (5800' E. OF COUNTY LINE RD.)	NW	50	1	-	1	1	50	12.5	14 <sup>2</sup>	16	0.02	-	8	-	-	-	-	-	-
CR11-3B	MT. OLIVE TR. (5800' E. OF COUNTY LINE RD.)	NE	25	1	-	1	1	25	12.5	-	17	0.02	83	-	-	-	-	-	-	-
CR11-3C	MT. OLIVE TR. (5800' E. OF COUNTY LINE RD.)	SE	50	1	-	1	1	50	12.5	33 <sup>2</sup>	-	0.03	-	8	-	-	-	-	-	-
CR11-3D	MT. OLIVE TR. (5800' E. OF COUNTY LINE RD.)	SW	25	1	-	1	1	12.5	12.5	50 <sup>2</sup>	-	0.04	-	8	-	-	-	-	-	-
CR11-4A	MT. OLIVE TR. (3800' W. OF NIEMANVILLE TR.)	NE <sup>6</sup>	25	1	-	1	1	37.5	12.5	4 <sup>2</sup>	12	0.02	-	8	-	-	-	-	-	-
CR11-4B	MT. OLIVE TR. (3800' W. OF NIEMANVILLE TR.)	SE <sup>6</sup>	25	1	-	1	1	50	12.5	40 <sup>2</sup>	-	0.04	-	8	-	-	-	-	-	-
CR11-4C	MT. OLIVE TR. (3800' W. OF NIEMANVILLE TR.)	NW <sup>6</sup>	- <sup>4</sup>	-	-	-	-	-	-	-	-	-	-	-	-	-	-	-	-	-
CR11-4D	MT. OLIVE TR. (3800' W. OF NIEMANVILLE TR.)	SW <sup>6</sup>	- <sup>4</sup>	-	-	-	-	-	-	-	-	-	-	-	-	-	-	-	-	-
CR11-5A	MT. OLIVE TR. (800' W. OF NIEMANVILLE TR.)	NW	- <sup>4</sup>	-	-	-	-	-	-	-	-	-	-	-	-	-	-	-	-	-
CR11-5B	MT. OLIVE TR. (800' W. OF NIEMANVILLE TR.)	NE	25	1	-	1	1	75	12.5	4 <sup>2</sup>	22	0.03	-	8	-	-	-	-	-	-
CR11-5C	MT. OLIVE TR. (800' W. OF NIEMANVILLE TR.)	SW	- <sup>4</sup>	-	-	-	-	-	-	-	-	-	-	-	-	-	-	-	-	-
CR11-5D	MT. OLIVE TR. (800' W. OF NIEMANVILLE TR.)	SE	25	1	-	1	1	37.5	12.5	1 <sup>2</sup>	21	0.02	-	8	-	-	-	-	-	-
CR11-6A	MT. OLIVE TR. (4500' E. OF NIEMANVILLE TR.)	NW	100	1	-	1	1	50	12.5	21 <sup>2</sup>	-	0.03	-	8	-	-	-	-	-	-
CR11-6B	MT. OLIVE TR. (4500' E. OF NIEMANVILLE TR.)	NE	50	1	-	1	1	50	12.5	-	34	0.02	-	8	1	46	-	-	-	-
CR11-6C	MT. OLIVE TR. (4500' E. OF NIEMANVILLE TR.)	SE	50	1	-	1	1	50	12.5	18 <sup>2</sup>	6	0.03	-	8	-	-	-	-	-	-
CR11-6D	MT. OLIVE TR. (4500' E. OF NIEMANVILLE TR.)	SW	25	1	-	1	1	25	12.5	-	21	0.02	-	8	1	42	-	-	-	-
CR14-1A	ROCKY HOLLOW TR. (3362)	NE	50	1	-	1	1	-	12.5	-	1	0.01	83	-	-	-	-	-	-	-
CR14-1B	ROCKY HOLLOW TR. (3362)	SW	50	1	-	1	1	-	12.5	-	2	0.01	83	-	-	-	-	-	-	-
CR29-1A	PANAMA AVE. (1500' W. SHOAL CREEK AVE.)	NE	87.5	1	-	1	1	37.5 <sup>10</sup>	12.5	-	75	0.04	117	-	-	-	-	-	-	-
CR29-1B	PANAMA AVE. (1500' W. SHOAL CREEK AVE.)	SE	50	1	-	1	1	-	12.5	-	577	0.19	117	-	-	-	-	-	-	-
CR29-1C	PANAMA AVE. (1500' W. SHOAL CREEK AVE.)	SW	200	1	-	1	1	150 <sup>10</sup>	37.5	-	136	0.09	117	-	-	-	-	-	-	-
CR29-1D	PANAMA AVE. (1500' W. SHOAL CREEK AVE.)	NW	50	1	-	1	1	-	12.5	-	100	0.05	117	-	-	-	-	-	-	-
CR29-2A	PANAMA AVE. (RENKEN LANE)	NE	112.5	1	-	1	1	62.5 <sup>10</sup>	62.5	-	52	0.05	117	-	-	-	-	-	-	-
CR29-2B	PANAMA AVE. (RENKEN LANE)	SE	50	1	-	1	1	-	12.5	-	293	0.12	117	-	-	-	-	-	-	-
CR29-2C	PANAMA AVE. (RENKEN LANE)	SW	87.5	1	-	1	1	37.5 <sup>10</sup>	37.5	-	415	0.17	117	-	-	-	-	-	-	-
CR29-2D	PANAMA AVE. (RENKEN LANE)	NW	50	1	-	1	1	-	12.5	-	128	0.07	117	-	-	-	-	-	-	-
<b>TOTAL THIS SHEET</b>			<b>2108.5</b>	<b>46</b>	<b>0</b>	<b>6</b>	<b>48</b>	<b>1037.5</b>	<b>600</b>	<b>230</b>	<b>2254</b>	<b>1.53</b>	<b>2132</b>	<b>144</b>	<b>8</b>	<b>122</b>	<b>93</b>	<b>36</b>	<b>-</b>	<b>-</b>

- NO SHOULDER WIDENING REQUIRED.
  - REGRADE DITCH.
  - REQUIRES 25 FT LONG TERMINAL.
  - NO IMPROVEMENT. EXISTING TERMINAL TO REMAIN IN PLACE.
  - REMOVE SHOES AS NECESSARY AND USE NEW GUARDRAIL TO CONNECT EXISTING GUARDRAILS AT NW(S) AND NW SIDEROAD (S).
  - QUADRANTS LABELED AS IF A NORTH/SOUTH ROUTE.
  - QUADRANTS LABELED AS IF AN EAST/WEST ROUTE.
  - TERMINAL REQUIRES SHORT RADIUS FOR LAST 25', OR USE SHORTER 25' TERMINAL WITH 25' SHORT-RADIUS GUARDRAIL (25'R. TO BE INCLUDED IN COST OF TERMINAL).
  - REMOVAL LENGTH INCLUDES APPROXIMATELY 30' PLUS APPROXIMATELY 20' ALREADY BROKEN OFF.
  - REPLACE MOST DAMAGED GUARDRAIL LENGTHS ON CORRESPONDING SIDE OF ROADWAY (OTHER THAN 50' END TERMINALS). VERTICAL ADJUSTMENT OF EXISTING GUARDRAIL IS REQUIRED ON EACH END OF REPLACEMENT GUARDRAIL FOR TRANSITION OF NEW HEIGHT.
- \* SEE ALSO BRIDGE RAILING REMOVAL AND REPLACEMENT DETAILED ON SHEET 5 OF 15.

FILE NAME = I:\\_jbsa\2017\21117029\_HSP\_Grant\_MontCoHighDept\17-029-3\06000000-eh-t-S00-1E-SW.dgn

**Prairie Engineers, P.C.**  
www.prairieengineers.com  
professional design firm no. 184-005965  
© Copyright Prairie Engineers, P.C. 2018

USER NAME = jmosset	DESIGNED - SMA	REVISED -
PLOT SCALE = 2.0000' / in.	DRAWN - JLM	REVISED -
PLOT DATE = 12/19/2019	CHECKED - SMA	REVISED -
	DATE -	REVISED -

**STATE OF ILLINOIS  
DEPARTMENT OF TRANSPORTATION**

SCHEDULE OF QUANTITIES			
SOUTHWEST MONTGOMERY COUNTY			
SCALE:	SHEET	OF SHEETS	STA. TO STA.

F.A. RTE.	SECTION	COUNTY	TOTAL SHEETS	SHEET NO.
	17-00140-00-GR	MONTGOMERY	15	15
CONTRACT NO. 93739				
ILLINOIS FED. AID PROJECT				