

STATE OF ILLINOIS
DEPARTMENT OF TRANSPORTATION

ROUTE NO.	SECTION	COUNTY	TOTAL SHEETS	SHEET NO.
T.R. 181	16-04129-00-BR	WHITE	24	1
FED. ROAD DIST. NO.		ILLINOIS CONTRACT NO. 99636		

INDEX OF SHEETS

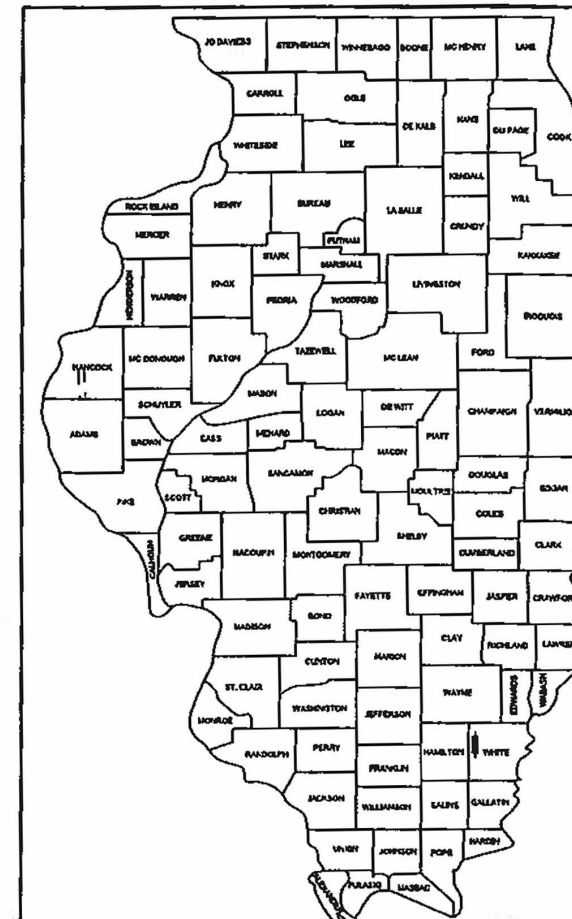
SHEET NO.	DESCRIPTION
1.	COVER SHEET
2.	SUMMARY OF QUANTITIES AND GENERAL NOTES
3.	TYPICAL CROSS SECTIONS
4.	PLAN AND PROFILE
5-12.	BRIDGE PLANS
13-14.	BORINGS
15-24.	STATION CROSS SECTIONS

HIGHWAY STANDARDS:

000001-07	STANDARD SYMBOLS, ABBREVIATIONS, AND PATTERNS
515001-04	NAME PLATE FOR BRIDGES
701901-08	TRAFFIC CONTROL DEVICES
726001-01	OBJECT AND TERMINAL MARKERS
BLR 21-9	TYPICAL APPLICATION OF TRAFFIC CONTROL DEVICES FOR CONSTRUCTION ON RURAL LOCAL HIGHWAYS

PLANS FOR PROPOSED
SURFACE TRANSPORTATION PROGRAM
OFF SYSTEM BRIDGE

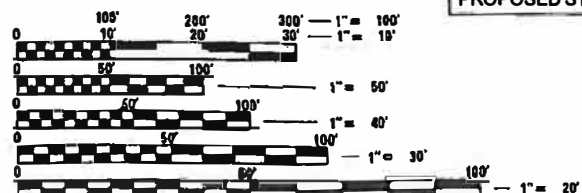
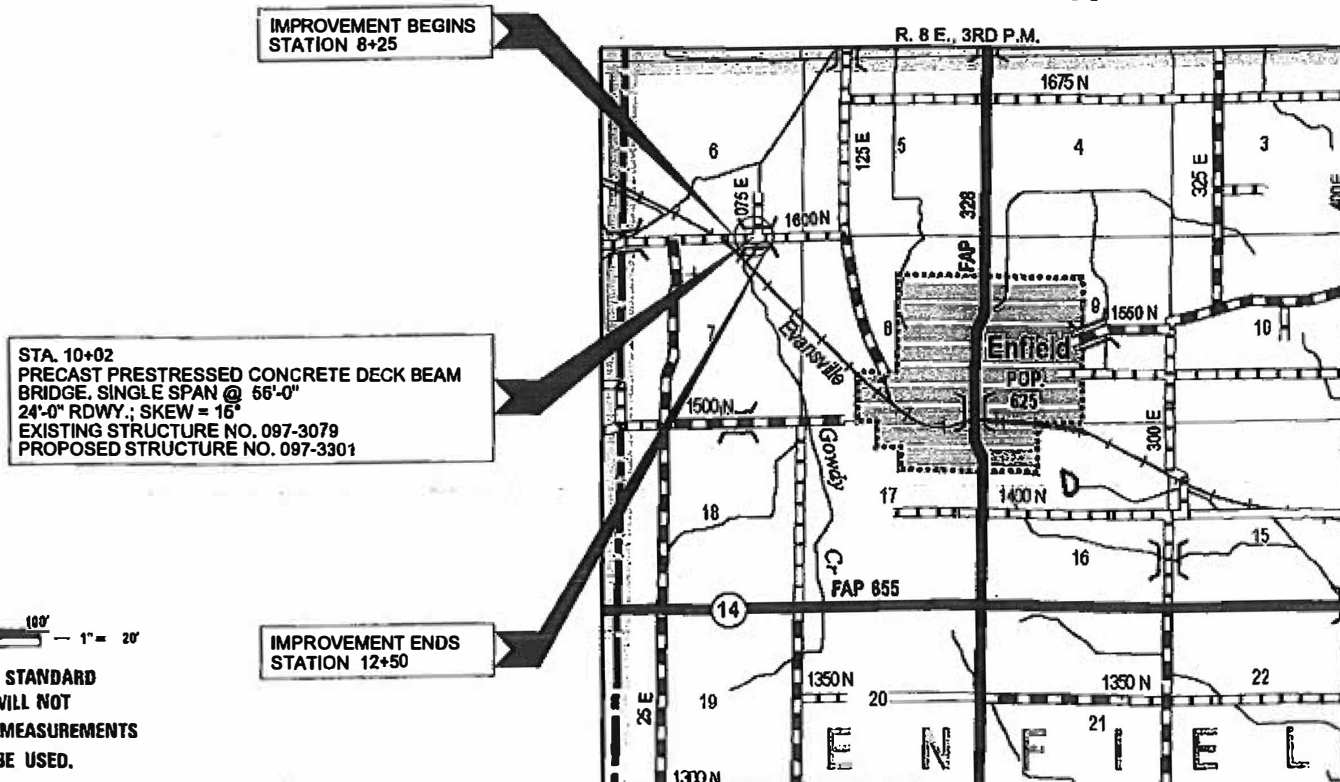
PROJECT 1YPK(657)
SECTION 16-04129-00-BR
ENFIELD ROAD DISTRICT
WHITE COUNTY
T.R. 181
PROPOSED STRUCTURE NO. 097-3301
C-99-511-17



LOCATION OF SECTION INDICATED THUS: -

UTILITIES

FRONTIER COMMUNICATIONS
208 W. UNION STREET
MARION, IL 62959



FULL SIZE PLANS HAVE BEEN PREPARED USING STANDARD ENGINEERING SCALES. REDUCED SIZED PLANS WILL NOT CONFORM TO STANDARD SCALES. IN MAKING MEASUREMENTS ON REDUCED PLANS, THE ABOVE SCALES MAY BE USED.

FUNCTIONAL CLASSIFICATION: LOCAL ROAD
DESIGN SPEED: 30 MPH
DESIGN TRAFFIC: 25 ADT

LOCATION MAP

APPROXIMATE SCALE: 0 1/2 MILE
NET LENGTH OF SECTION = 425 FEET = 0.080 MILES



WARNING
CALL JULIE TOLLFREE
1-800-892-0123
CALL 811 BEFORE YOU DIG
DIG NO: X2761847

ILLINOIS DEPARTMENT OF TRANSPORTATION

APPROVED Dec 23 2019
Brian Rye
COUNTY ENGINEER

APPROVED 12-23 2019
Joe Alb
TOWNSHIP COMMISSIONER

PASSED 02/20 2020

Releasing For Bid Based on Limited Review
1/02/20 2020
Keith Rolato
Acting REGION FIVE ENGINEER

STATE OF ILLINOIS
DEPARTMENT OF TRANSPORTATION



HAMPTON, LENZINI AND RENWICK, INC.
CIVIL ENGINEERS • STRUCTURAL ENGINEERS • LAND SURVEYORS
3085 STEVENSON DRIVE, SUITE 201
SPRINGFIELD, ILLINOIS 62703
217.548.3400 www.hlrengineering.com

DATE: 12/11/2019
EXPIRES: 11/30/2021

PROJECT NUMBER: 17.6695.130
DATE: 12/11/19

SUMMARY OF QUANTITIES

ITEM NO.	ITEM	CONSTRUCTION TYPE CODE 0010	
		UNIT	TOTAL
20200100	EARTH EXCAVATION	CU YD	175
20300100	CHANNEL EXCAVATION	CU YD	205
28100807	STONE DUMPED RIPRAP, CLASS A4	TON	250
40200800	AGGREGATE SURFACE COURSE, TYPE B	TON	455
50100100	REMOVAL OF EXISTING STRUCTURES	EACH	1
50300225	CONCRETE STRUCTURES	CU YD	23.9
50300280	CONCRETE ENCASEMENT	CU YD	2.8
50400405	PRECAST PRESTRESSED CONCRETE DECK BEAMS (21" DEPTH)	SQ FT	1,344
50800205	REINFORCEMENT BARS, EPOXY COATED	POUND	3,030
50900205	STEEL RAILING, TYPE S1	FOOT	109
51201400	FURNISHING STEEL PILES HP10X42	FOOT	400
51202305	DRIVING PILES	FOOT	400
51500100	NAME PLATES	EACH	1
542D0235	PIPE CULVERTS, CLASS D, TYPE 1 30"	FOOT	60
67100100	MOBILIZATION	L SUM	1
72501000	TERMINAL MARKER - DIRECT APPLIED	EACH	4
X2501000	SEEDING, CLASS 2 (SPECIAL)	ACRE	0.3

^ SEE SPECIAL PROVISIONS
* SPECIALTY ITEMS

GENERAL NOTES

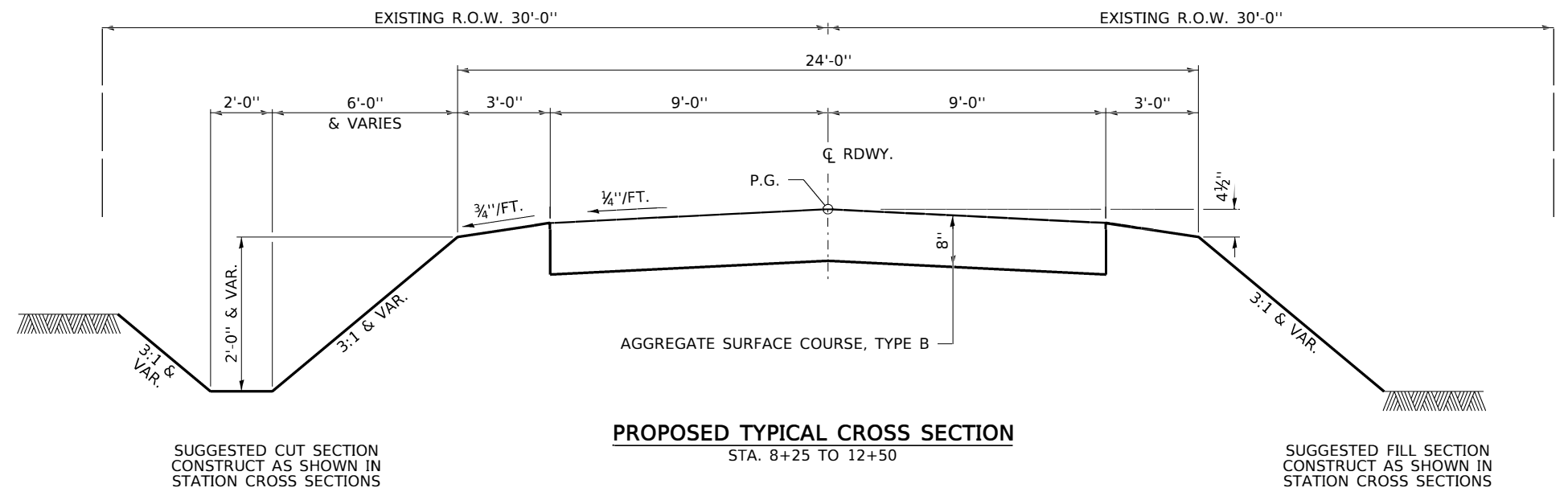
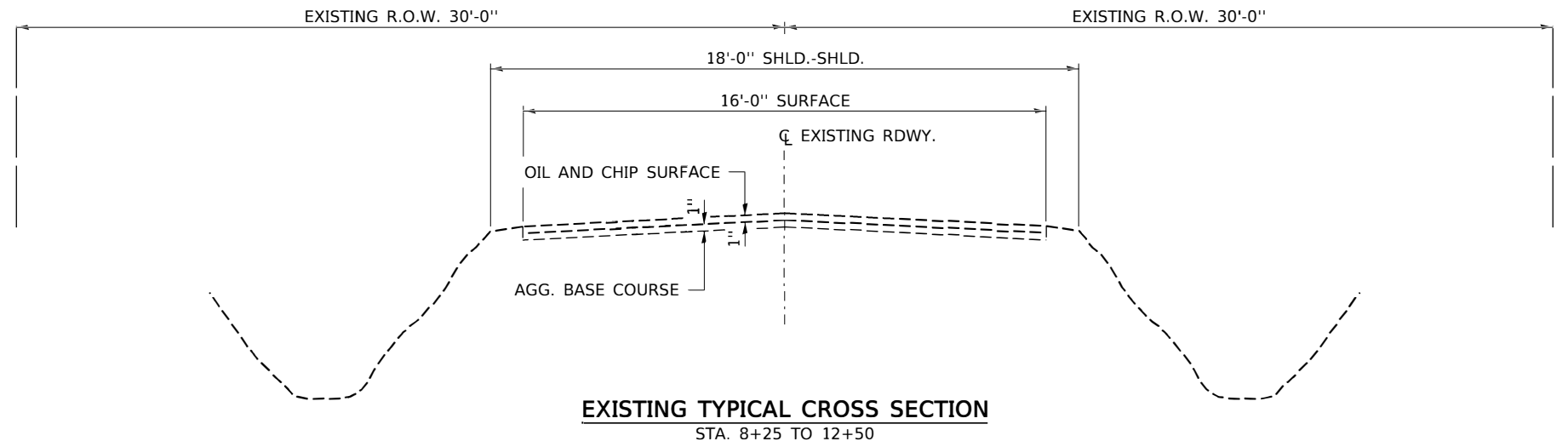
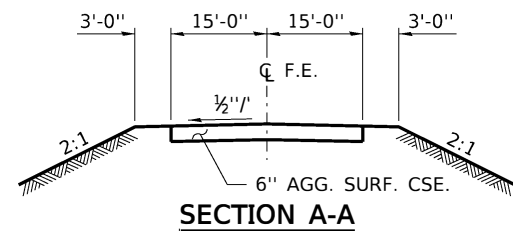
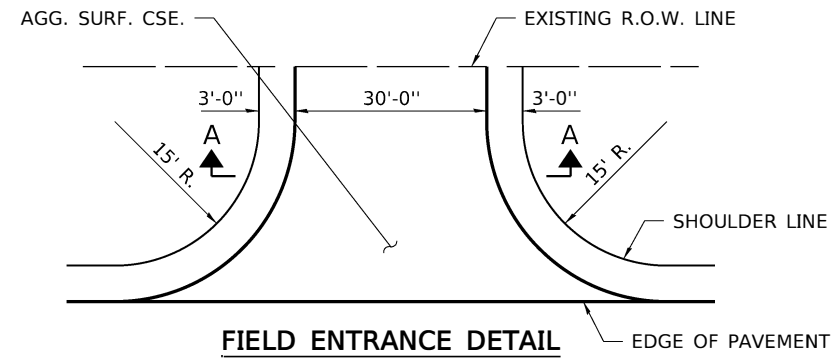
- 1) ALL CONSTRUCTION SHALL BE DONE IN ACCORDANCE WITH THE STATE OF ILLINOIS "STANDARD SPECIFICATIONS FOR ROAD AND BRIDGE CONSTRUCTION, ADOPTED APRIL 1, 2016", (HERE IN AFTER REFERRED TO AS THE STANDARD SPECIFICATIONS; THE "SUPPLEMENTAL SPECIFICATIONS AND RECURRING SPECIAL PROVISIONS" ADOPTED JANUARY 1, 2020; THE LATEST EDITION OF THE "ILLINOIS MANUAL ON UNIFORM TRAFFIC CONTROL DEVICES FOR STREETS AND HIGHWAYS"; THE DETAILS IN THE PLANS AND THE "SPECIAL PROVISIONS" INCLUDED IN THE DOCUMENTS.
- 2) ALL CLEARING, GRUBBING, FENCE REMOVAL, PAVEMENT REMOVAL, AND REMOVAL OF EXISTING DRAINAGE STRUCTURES SHALL BE INCLUDED IN THE COST OF EARTH EXCAVATION. ALL AGGREGATE AND BITUMINOUS PAVEMENT SHALL BE REMOVED AND PROPERLY DISPOSED OF BY THE CONTRACTOR IN A METHOD APPROVED BY THE ENGINEER. REMOVAL AND DISPOSAL OF PAVEMENT SHALL BE INCLUDED IN THE COST OF EARTH EXCAVATION AND NO ADDITIONAL COMPENSATION WILL BE ALLOWED.
- 3) WHERE SECTION OR SUBSECTION MONUMENTS ARE ENCOUNTERED, THE ENGINEER SHALL BE NOTIFIED BEFORE SUCH MONUMENTS ARE REMOVED. THE CONTRACTOR SHALL PROTECT AND CAREFULLY PRESERVE ALL PROPERTY MARKS AND MONUMENTS UNTIL THE OWNER, AN AUTHORIZED SURVEYOR OR AGENT HAS WITNESSED OR OTHERWISE REFERENCED THEIR LOCATION.
- 4) ANY REFERENCE TO STANDARDS THROUGHOUT THE PLANS OR SPECIAL PROVISIONS SHALL BE INTERPRETED TO BE THE LATEST STANDARD OF THE DEPARTMENT.
- 5) THE LOCATION ON THE PLANS OF EXISTING DRAINAGE STRUCTURES, TELEPHONE LINES, ELECTRIC LINES, WATER SERVICE LINES, GAS MAINS, AND OTHER UTILITY FACILITIES AS SHOWN ON THE PLANS ARE BASED ON FIELD INVESTIGATIONS AND THE BEST INFORMATION AVAILABLE, BUT THE LOCATIONS ARE NOT GUARANTEED. IT SHALL BE THE CONTRACTOR'S RESPONSIBILITY TO ASCERTAIN THEIR EXACT LOCATION FROM THE INDIVIDUAL UTILITY COMPANIES AND BY FIELD INSPECTION.
- 6) THE FOLLOWING RATES OF APPLICATION HAVE BEEN USED IN CALCULATING PLAN QUANTITIES

AGGREGATE SURFACE COURSE	2.05 TON/CU YD
STONE DUMPED RIPRAP	1.75 TON/CU YD
- 7) THE AREA TO BE SEEDED SHALL CONSIST OF ALL DISTURBED EARTH SURFACES WITHIN THE RIGHT OF WAY OR AS DIRECTED BY THE ENGINEER. SEEDING, CLASS 2 (SPECIAL) = 0.3 ACRES
- 8) ALL WASTE MATERIAL FROM EXCAVATIONS SHALL BE DISPOSED OF BY THE CONTRACTOR. NO ADDITIONAL COMPENSATION WILL BE ALLOWED.
- 9) COMMITMENTS:
 - 1) A BAT ASSESSMENT SHALL BE CONDUCTED IF WORK OCCURS TO EXISTING STRUCTURE AFTER AUGUST 15.

EARTHWORK SCHEDULE

LOCATION	EARTH EXCAVATION	CHANNEL EXCAVATION	SHRINKAGE FACTOR	PERCENT USED	EXCAVATION ADJUSTED FOR SHRINKAGE	EMBANKMENT REQUIRED	EARTHWORK BALANCE
	CU.YD.	CU.YD.			CU.YD.	CU.YD.	CU.YD.
TR 181 / 1600 N RD							
STA. 8+25 TO STA. 9+73.31	98		25.00%	100.00%	74	41	33
STA. 9+73.31 TO STA. 10+30.69		205	25.00%	70.00%	108		108
STA. 10+30.69 TO STA. 12+50	79		25.00%	100.00%	59	110	-51
TOTAL	177	205			241	151	90
USE	175	205					90

WASTE 90 CU YDS



TRANSITIONS FROM THE PROPOSED ROADWAY TO THE EXISTING ROADWAY ARE TO BE CONSTRUCTED FROM STA. 12+00 TO STA. 12+50. SEE SHEET 5 FOR TRANSITION AT BRIDGE.

FILE NAME = 170695-sht-typsections.dgn	USER NAME = rmosick	DESIGNED - J.W.F.	REVISED -
HAMPTON, LENZINI AND RENWICK, INC. 3085 STEVENSON DRIVE, SUITE 201 SPRINGFIELD, ILLINOIS 62703 ILLINOIS PROFESSIONAL DESIGN FIRM LS / PE / BE CORP. 184.000959		DRAWN - M.M.P.	REVISED -
PLOT SCALE = \$SCALE\$		CHECKED - S.W.M.	REVISED -
PLOT DATE = 12/11/2019		DATE - 12/11/19	REVISED -

STATE OF ILLINOIS
WHITE COUNTY HIGHWAY DEPARTMENT

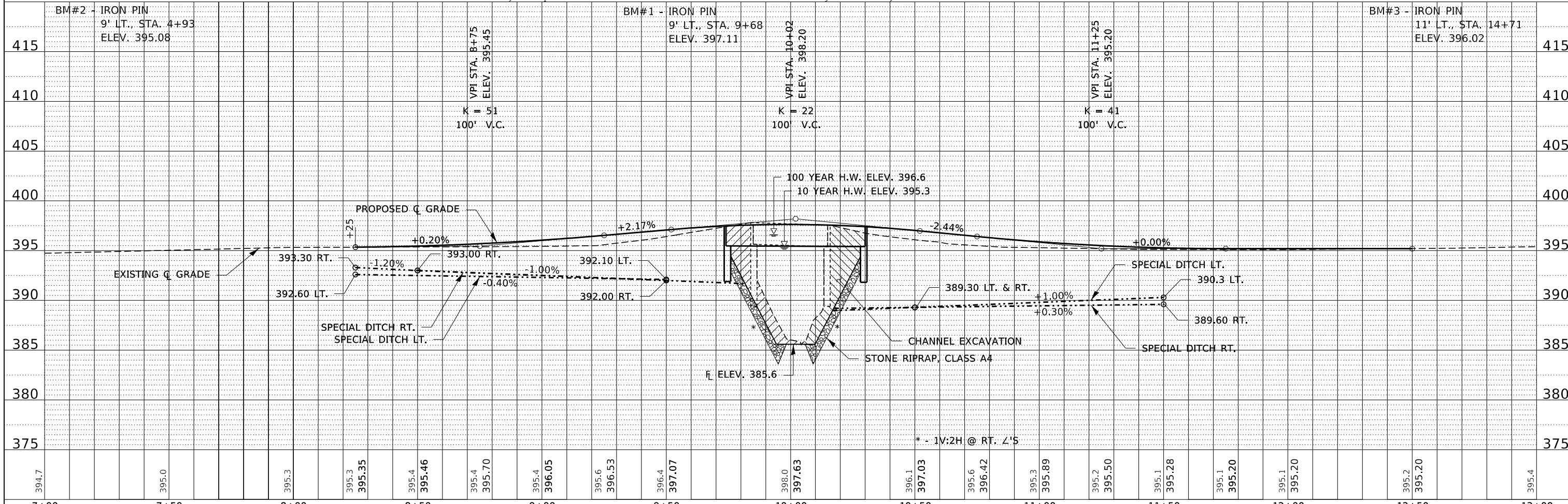
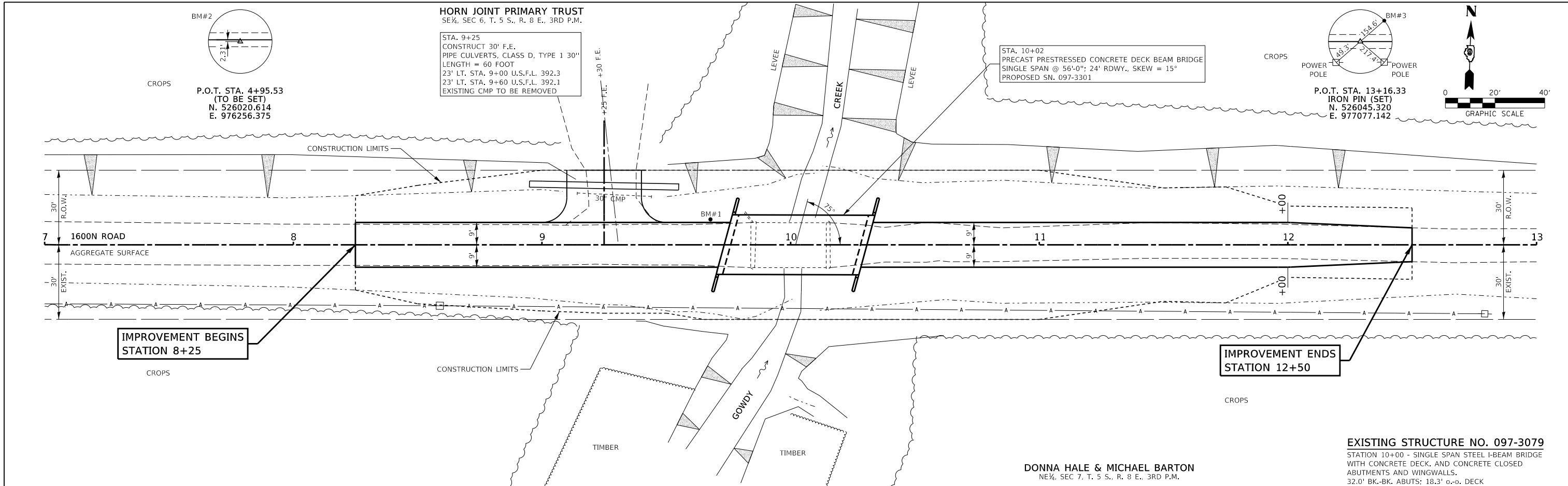
TYPICAL CROSS SECTIONS

SCALE: SHEET NO. 1 OF 1 SHEETS STA. TO STA.

T.R.	SECTION	COUNTY	TOTAL SHEETS	SHEET NO.
181	16-04129-00-BR	WHITE	24	3
ENFIELD ROAD DISTRICT		CONTRACT NO. 99636		
ILLINOIS FED. AID PROJECT 1YPK(657)				

DATE	
BY	
REVIEWED	
PLANNED	
NOTED	
NO.	

DATE	
BY	
REVIEWED	
PLANNED	
NOTED	
NO.	



FILE NAME = 170695-ent-planpr.dgn	USER NAME = rmosick	DESIGNED - S.A.A.	REVISED -	T.R.	SECTION	COUNTY	TOTAL SHEETS	SHEET NO.
HAMPTON, LENZINI AND RENWICK, INC.		DRAWN - M.M.P.	REVISED -	181	16-04129-00-BR	WHITE	24	4
3066 STEVENSON DRIVE, SUITE 201 SPRINGFIELD, ILLINOIS 62703		CHECKED - J.W.F.	REVISED -	ENFIELD ROAD DISTRICT		CONTRACT NO. 99636		
ILLINOIS PROFESSIONAL DESIGN FIRM LS / PE / SE CORP. 184.000959		DATE - 12/11/19	REVISED -	SCALE: 5V:20H		SHEET NO. 1 OF 1 SHEETS		STA. 7+00 TO STA. 13+00

**STATE OF ILLINOIS
WHITE COUNTY HIGHWAY DEPARTMENT**

PLAN & PROFILE

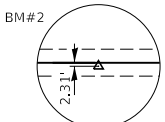
EXISTING STRUCTURE NO. 097-3079
STATION 10+00 - SINGLE SPAN STEEL I-BEAM BRIDGE WITH CONCRETE DECK, AND CONCRETE CLOSED ABUTMENTS AND WINGWALLS.
32.0' BK.-BK. ABUTS: 18.3' o.-o. DECK

DONNA HALE & MICHAEL BARTON
NE 1/4, SEC 7, T. 5 S., R. 8 E., 3RD P.M.

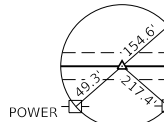
HORN JOINT PRIMARY TRUST
SE 1/4, SEC 6, T. 5 S., R. 8 E., 3RD P.M.

STA. 9+25
CONSTRUCT 30' F.E.
PIPE CULVERTS, CLASS D, TYPE 1 30"
LENGTH = 60 FOOT
23' LT. STA. 9+00 U.S.F.L. 392.3
23' LT. STA. 9+60 U.S.F.L. 392.1
EXISTING CMP TO BE REMOVED

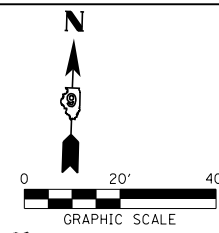
STA. 10+02
PRECAST PRESTRESSED CONCRETE DECK BEAM BRIDGE
SINGLE SPAN @ 56'-0"; 24' RDWY., SKEW = 15°
PROPOSED SN. 097-3301



P.O.T. STA. 4+95.53
(TO BE SET)
N. 526020.614
E. 976256.375



P.O.T. STA. 13+16.33
IRON PIN (SET)
N. 526045.320
E. 977077.142

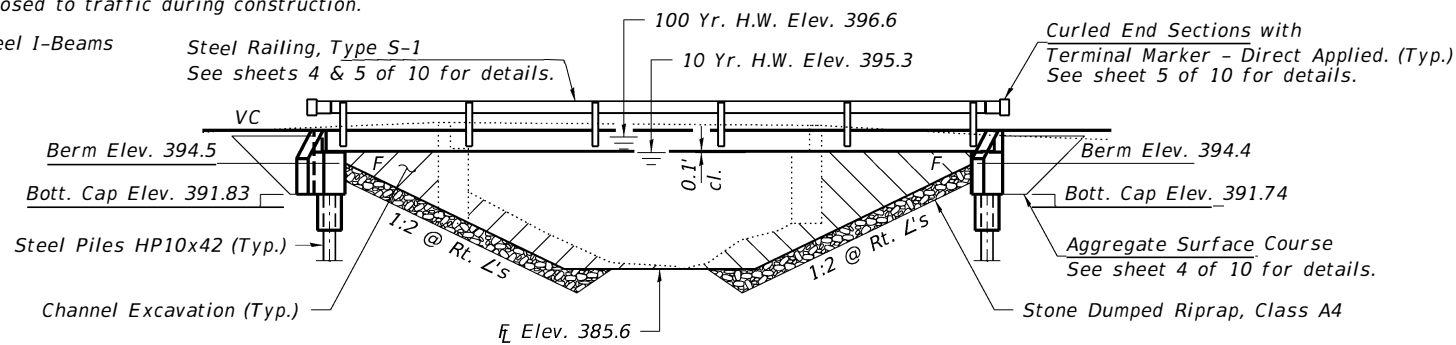


BENCHMARK: Iron pin 11' Lt. Sta. 14+71, Elev. 396.02

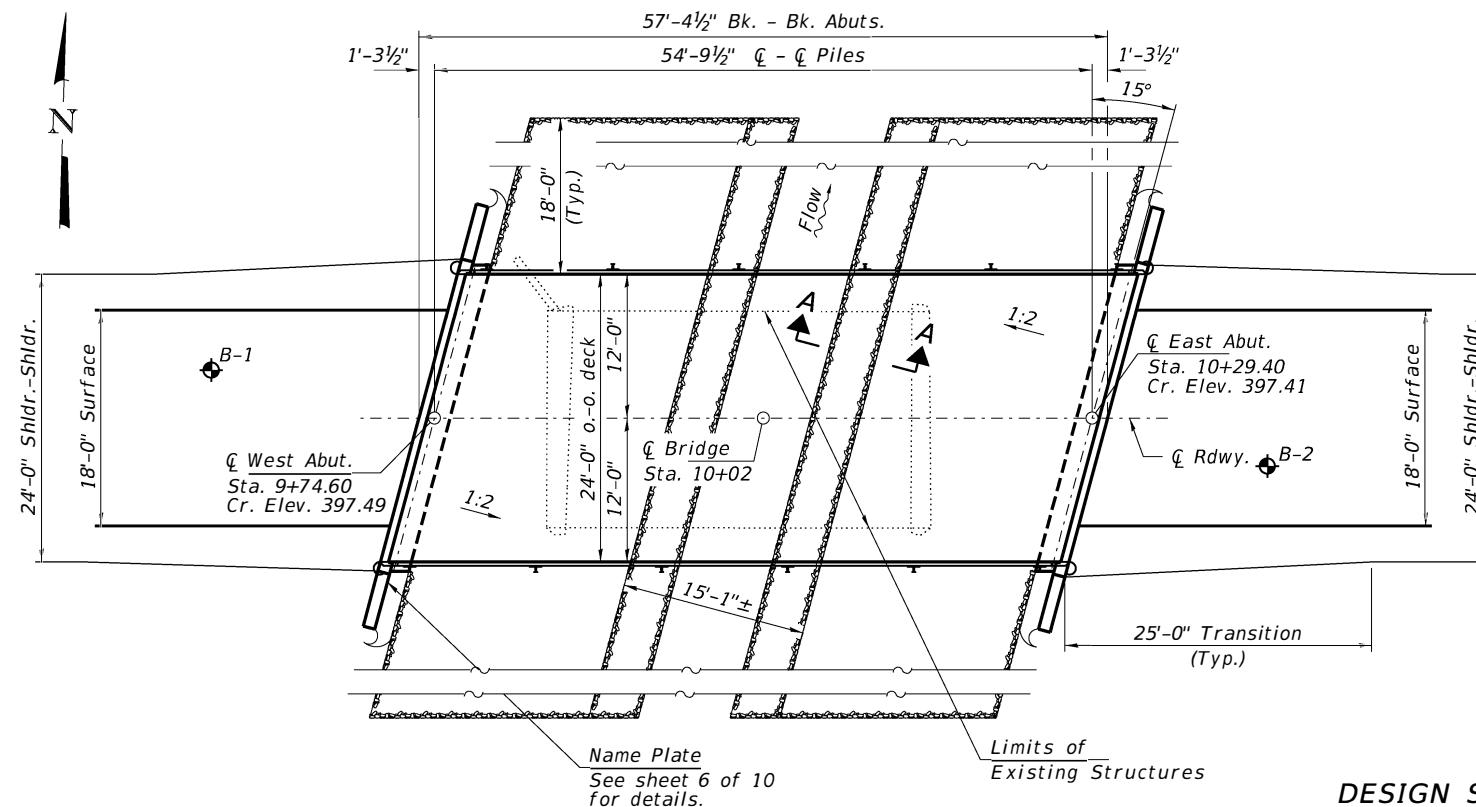
EXISTING STRUCTURE NO. 097-3079: Sta. 10+00 - Single span steel I-beam bridge with concrete deck and closed concrete abutments and wingwalls. 32.0' bk.-bk.; 18.3' o.-o. deck.

Structure closed to traffic during construction.

Salvage: Steel I-Beams



ELEVATION



PLAN

DESIGN SPECIFICATIONS

2017 AASHTO LRFD Bridge Design Specifications, 8th Edition with all interims.

LOADING HL-93

Allow 50#/sq. ft. for future wearing surface.

DESIGN STRESSES

FIELD UNITS

f'c = 3,500 psi
fy = 60,000 psi (Reinf.)

PRECAST PRESTRESSED UNITS

f'c = 6,000 psi
f'ci = 5,000 psi
fpu = 270,000 psi (1/2"Ø low lax. strands)
fpbt = 201,960 psi (1/2"Ø low lax. strands)
fy = 60,000 psi (Reinf.)

SEISMIC DATA

Seismic Performance Zone (SPZ) = 3
Design Spectral Acceleration at 1.0 sec. (SD1) = 0.304g
Design Spectral Acceleration at 0.2 sec. (SDS) = 0.725g
Soil Site Class = D

WATERWAY INFORMATION

Flood	Freq. Yr.	Q C.F.S.	Opening Sq. Ft.		Nat. H.W.E.		Head - Ft.		Headwater El.	
			Exist.	Prop.	Exist.	Prop.	Exist.	Prop.	Exist.	Prop.
Design/Overtop	10	1410	210	300	395.34	0.28	0.16	395.62	395.50	
Base	100	2740	210	350	396.58	0.07	0.06	396.65	396.64	
Scour Check	200	3180	210	350	396.77	0.06	0.07	396.83	396.84	
Max. Calc.	500	3820	210	350	397.02	0.05	0.08	397.07	397.10	

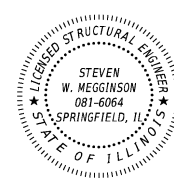
Drainage Area = 6.1 Sq. Mi. Existing Low Grade Elev. 395.0 @ Sta. 7+50 Proposed Low Grade Elev. 395.0 @ Sta. 7+50
10 Year Velocity through Existing Bridge = 6.7 fps 10 Year Velocity through Proposed Bridge = 4.7 fps

DESIGN SCOUR ELEVATION TABLE

Event/Limit State	Design Scour Elev. (ft.)		Item 113
	W. Abut.	E. Abut.	
Q100	392.8	392.8	8
Q500	392.8	392.8	
Design	392.8	392.8	
Check	392.8	392.8	

I certify that to the best of my knowledge, information and belief, this bridge design is structurally adequate for the design loading shown on the plans. The design is an economical one for the style of structure and complies with requirements of the current "AASHTO LRFD Specifications."

Steven W. Megginson 12/11/19
ILLINOIS STRUCTURAL ENGINEER NO. 081-6064 Expires 11-30-2020

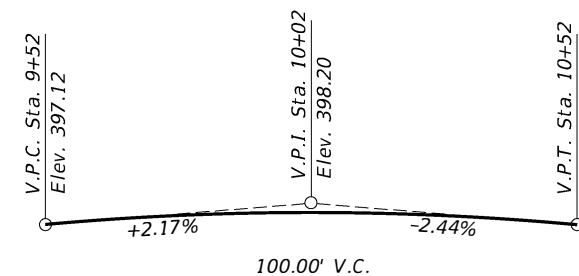


GENERAL NOTES

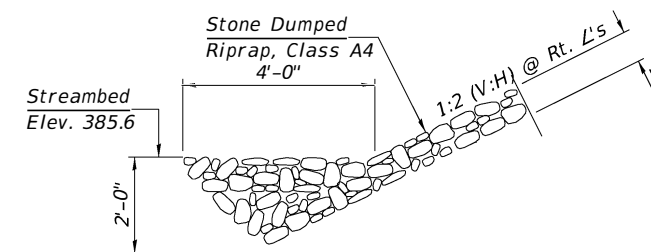
Layout of the slope protection system may be varied to suit ground conditions in the field as directed by the Engineer.
Reinforcement bars shall conform to the requirements of ASTM A 706 Gr 60 (IL Modified). See Special Provisions.
All bars to be epoxy coated.
Excavation required to construct the Abutments shall be included in the cost of Concrete Structures. No additional compensation will be allowed for Structure Excavation.
All proposed construction activities shall be in accordance with Nationwide Permit number 14 of the Department of the Army authorized under Section 404 of the Clean Water Act.
The IEPA has issued Section 401 Water Quality Certification for this activity. See Special Provisions for conditions.
The existing steel I-beam superstructure shall be salvaged for use by the township.

INDEX OF STRUCTURE SHEETS

1. General Plan & Elevation
2. 21"x48" PPC Deck Beam
3. 21"x48" PPC Deck Beam Details
4. Superstructure Details
5. Steel Railing, Type S-1
6. West Abutment
7. East Abutment
8. HP Pile Details
9. Borings



PROFILE GRADE
T.R. 181



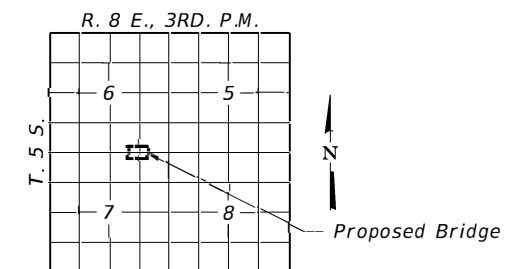
SECTION A-A

Note: See Special Provisions for Stone Dumped Riprap, Class A4.

GOWDY CREEK
BUILT 202_ BY
WHITE COUNTY
SEC. 16-04129-00-BR
ENFIELD ROAD DISTRICT
STR. NO. 097-3301
LOADING HL-93

NAME PLATE

See Std. 515001



LOCATION SKETCH

TOTAL BILL OF MATERIAL

ITEM	UNIT	SUPER	SUB	TOTAL
Channel Excavation	Cu. Yd.			205
Stone Dumped Riprap, Class A4	Ton			250
Aggregate Surface Course, Type B	Ton			100
Removal of Existing Structures	Each			1
Concrete Structures	Cu. Yd.		23.9	23.9
Concrete Encasement	Cu. Yd.		2.8	2.8
Precast Prestressed Conc. Deck Beams (21" Depth)	Sq. Ft.	1,344		1,344
Reinforcement Bars, Epoxy Coated	Pound		3,030	3,030
Steel Railing, Type S-1	Foot	109		109
Furnishing Steel Piles HP10x42	Foot		400	400
Driving Piles	Foot		400	400
Name Plates	Each		1	1
Terminal Marker - Direct Applied	Each	4		4

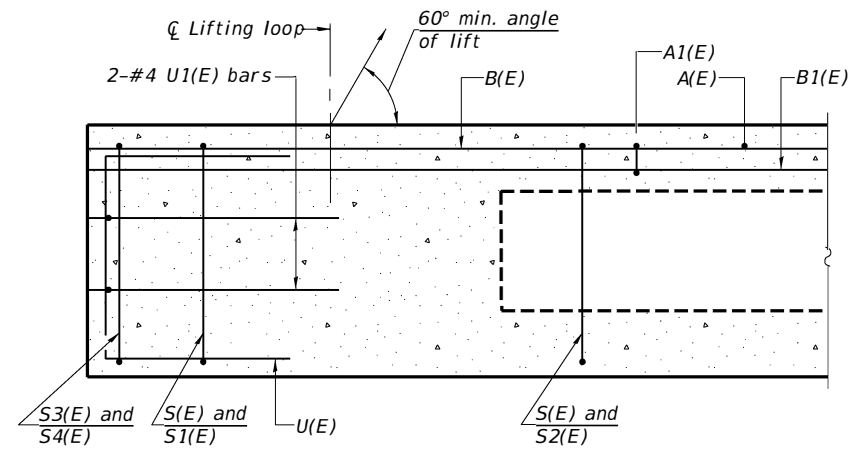
FILE NAME = 170695-ah1-bridge.dgn	USER NAME = rmosick	DESIGNED - J.W.F.	REVISED -
HAMPTON, LENZINI AND RENWICK, INC. 3085 STEVENSON DRIVE, SUITE 201 SPRINGFIELD, ILLINOIS 62703 ILLINOIS PROFESSIONAL DESIGN FIRM LS / PE / SE CORP. 184.000998	PLOT SCALE =	CHECKED - S.W.M.	REVISED -
PLOT DATE = 12/11/2019		DRAWN - M.M.P.	REVISED -
		CHECKED - S.W.M.	REVISED -

STATE OF ILLINOIS
WHITE COUNTY HIGHWAY DEPARTMENT

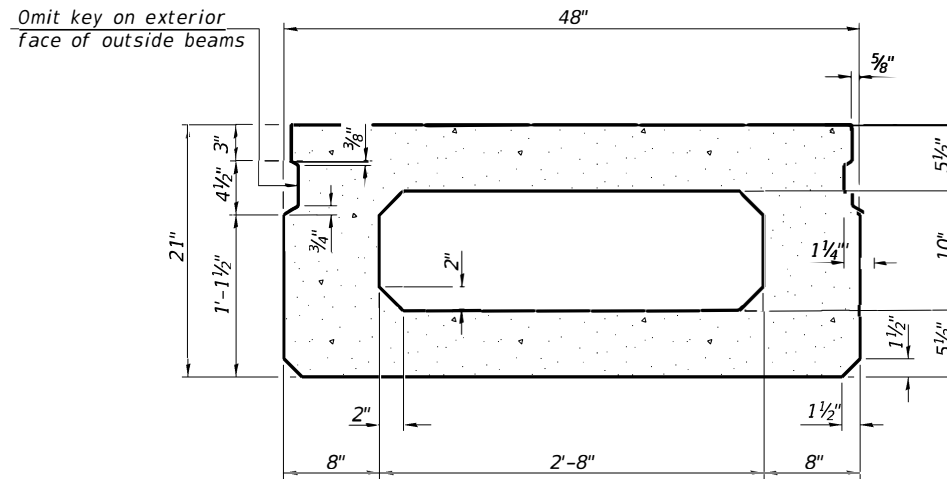
GENERAL PLAN & ELEVATION
STRUCTURE NO. 097-3301

SHEET NO. 1 of 10 SHEETS

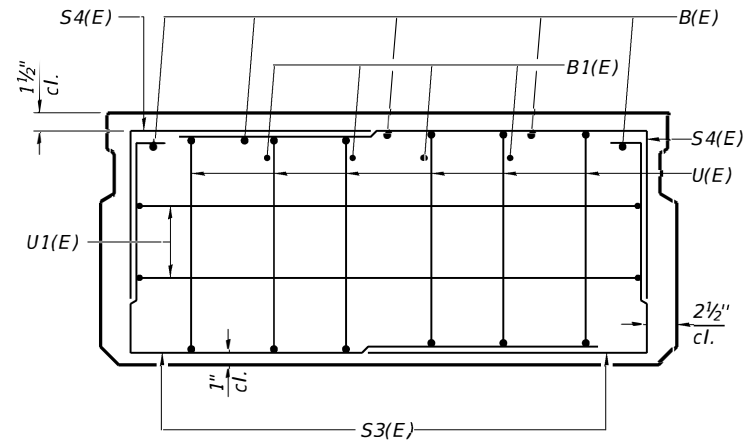
T.R.	SECTION	COUNTY	TOTAL SHEETS	SHEET NO.
181	16-04129-00-BR	WHITE	24	5
ENFIELD ROAD DISTRICT			CONTRACT NO. 99636	
ILLINOIS FED. AID PROJECT 1YPK(657)				



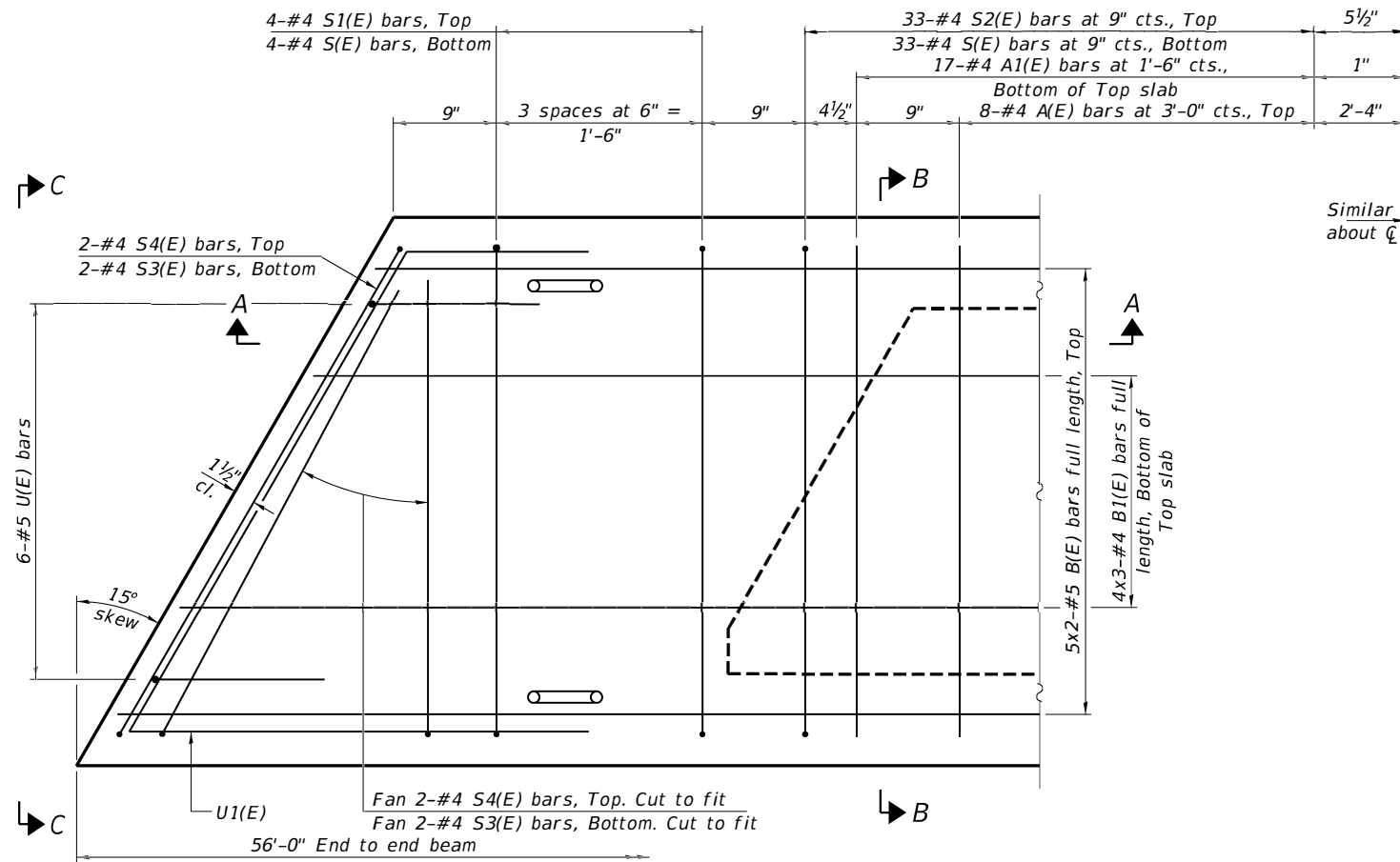
SECTION A-A



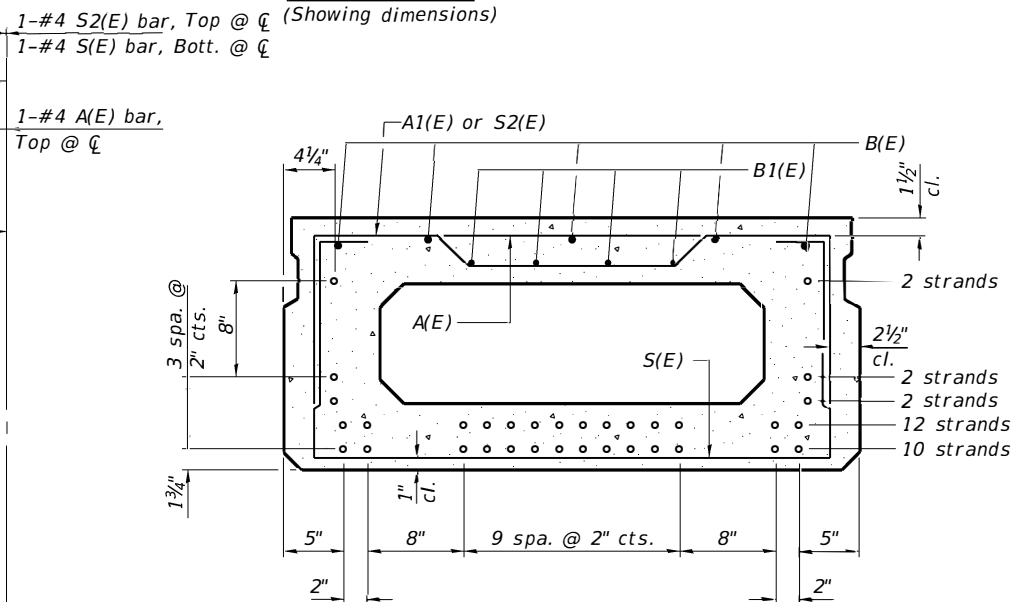
SECTION B-B



VIEW C-C



PLAN VIEW



SECTION B-B

(Showing reinforcement and permissible strand locations)

Note: Place the number of strands specified in each row symmetrically about the centerline of beam in the permissible strand locations shown.

BAR LIST
ONE BEAM ONLY
(For information only)

Bar	No.	Size	Length	Shape
A(E)	17	#4	3'-7"	—
A1(E)	34	#4	3'-10"	—
B(E)	10	#5	29'-2"	—
B1(E)	12	#4	19'-11"	—
S(E)	75	#4	7'-5"	⌈
S1(E)	8	#4	5'-11"	⌈
S2(E)	67	#4	6'-2"	⌈
S3(E)	8	#4	4'-8"	⌈
S4(E)	8	#4	3'-11"	⌈
U(E)	12	#5	4'-0"	⌈
U1(E)	4	#4	7'-1"	⌈

Note:
See sheet 3 and 4 of 10 for additional details and Bill of Material.

MINIMUM BAR LAP

#4 bar = 1'-11"
#5 bar = 2'-6"

Notes:
Spacing of S(E) and S2(E) bars may be adjusted up to 4" in the immediate area of the transverse tie diaphragms to miss the block outs for the transverse ties.
Bars indicated thus 5x2-#5 etc. indicates 5 lines of bars with 2 lengths per line.

PD-2148-L

2-17-2017

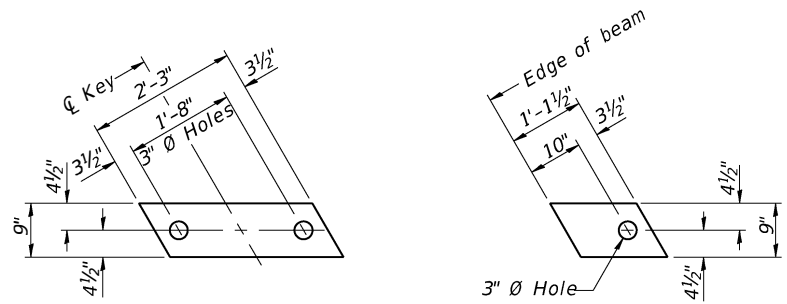
FILE NAME = 170695-sh1-bridge.dgn	USER NAME = rmosick	DESIGNED - J.W.F.	REVISED -
HAMPTON, LENZINI AND RENWICK, INC. 3085 STEVENSON DRIVE, SUITE 201 SPRINGFIELD, ILLINOIS 62703 ILLINOIS PROFESSIONAL DESIGN FIRM LS / PE / SE CORP. 184.000959	PLOT SCALE =	CHECKED - S.W.M.	REVISED -
	PLOT DATE = 12/11/2019	DRAWN - M.M.P.	REVISED -
		CHECKED - S.W.M.	REVISED -

STATE OF ILLINOIS
WHITE COUNTY HIGHWAY DEPARTMENT

21" x 48" PPC DECK BEAM
STRUCTURE NO. 097-3301

SHEET NO. 2 of 10 SHEETS

T.R.	SECTION	COUNTY	TOTAL SHEETS	SHEET NO.
181	16-04129-00-BR	WHITE	24	6
ENFIELD ROAD DISTRICT		CONTRACT NO. 99636		
ILLINOIS		FED. AID PROJECT 1YPK(657)		

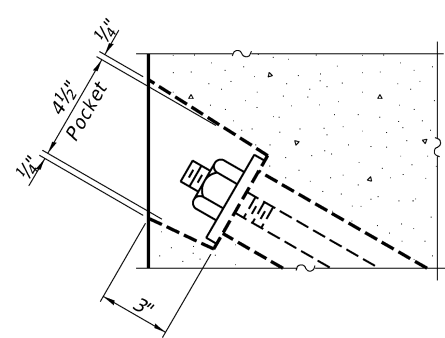


FABRIC BEARING PAD
(Interior - 10 req'd)

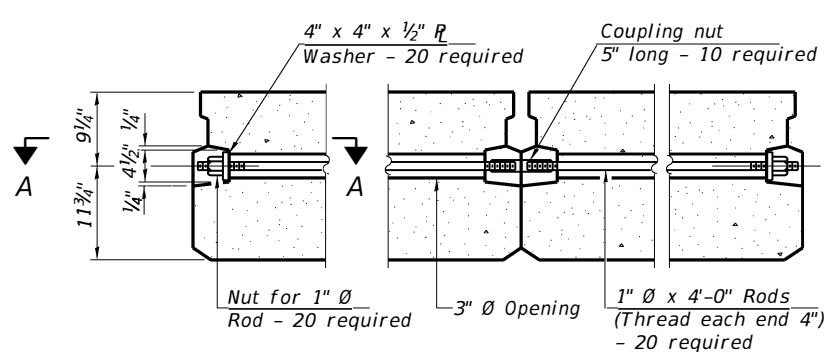
FABRIC BEARING PAD
(Exterior - 4 req'd)

Notes:
All bearing pads shall be 1" thick.
Omit holes when using expansion bearings.
Expansion bearing pad shall be bonded to the substructure.

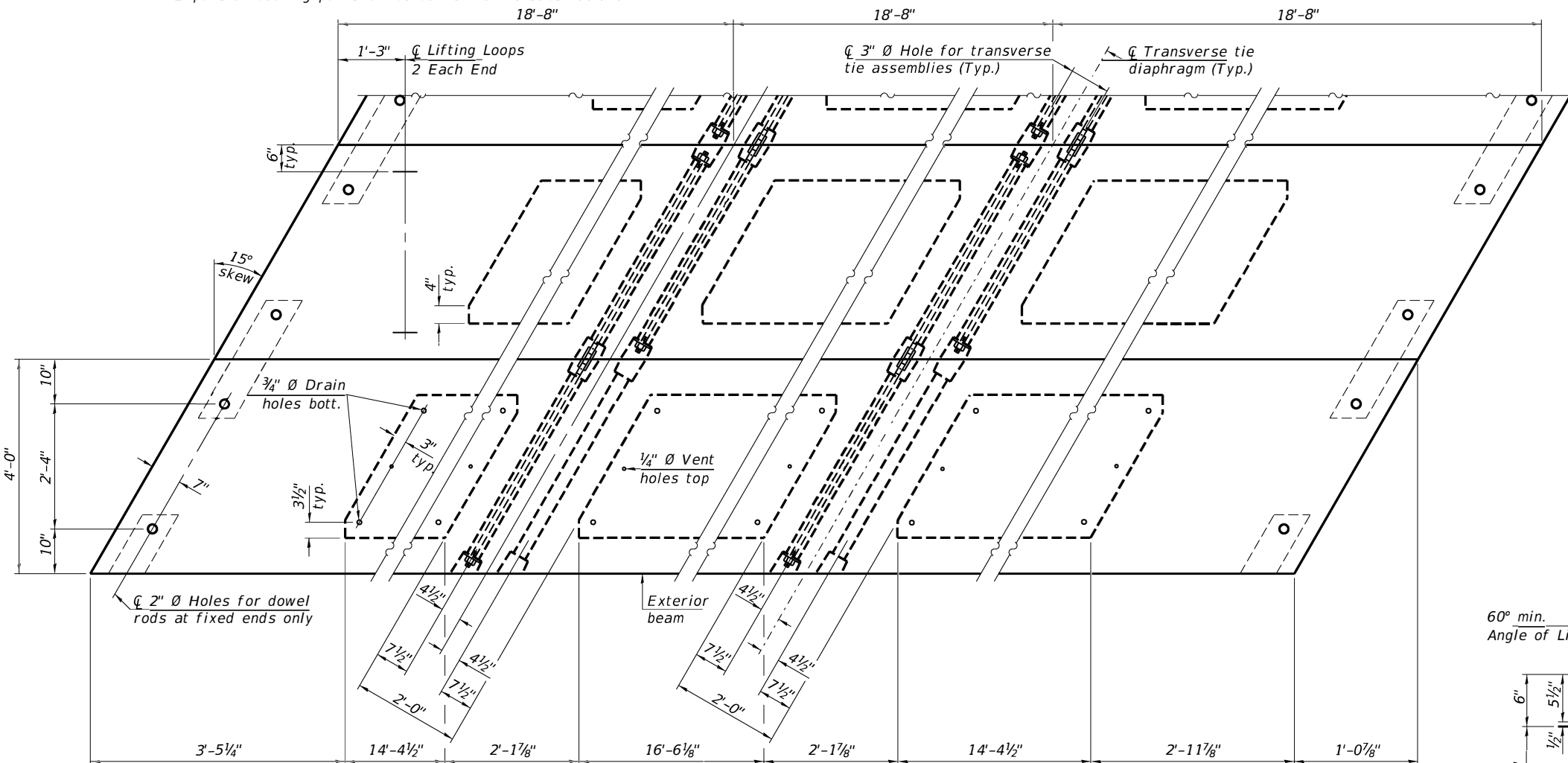
FIXED



SECTION A-A



TYPICAL TRANSVERSE TIE ASSEMBLY

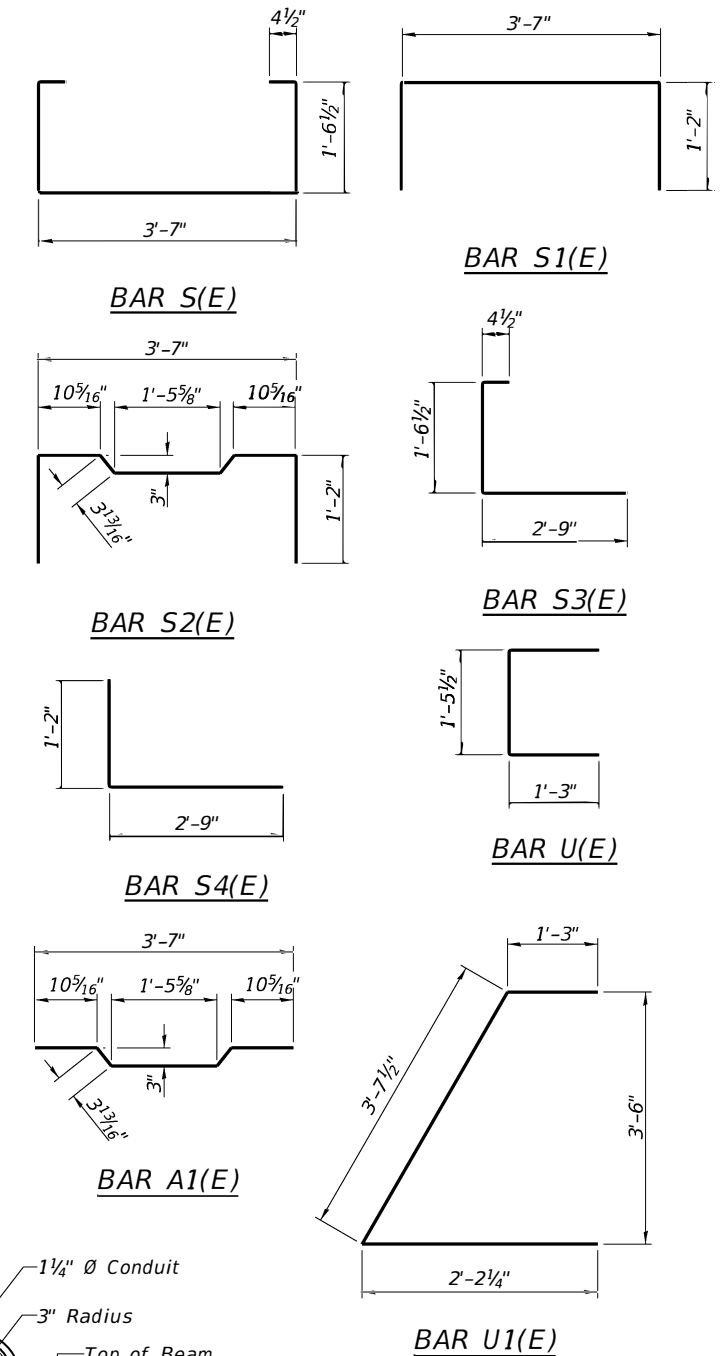


PLAN VIEW

Note: Connect beams in pairs with the transverse tie configuration shown.

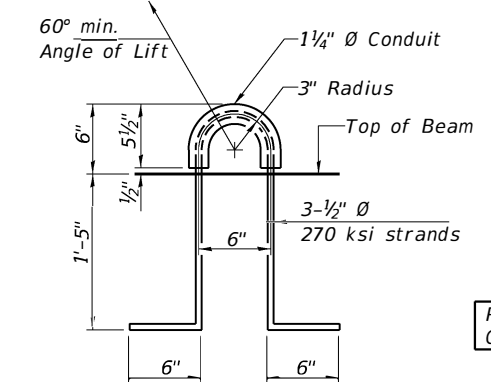
NOTES

Prestressing steel shall be uncoated high strength, low relaxation 7-wire strand, Grade 270. The nominal diameter shall be 1/2" and the nominal cross-sectional area shall be 0.153 sq. in. The 1" diameter rods in the transverse tie assembly shall be tightened to a snug fit and the threads set. Pockets on exterior faces of bridge shall be filled with grout after transverse tie assembly is in place. Two 1/8" fabric adjusting shims of the dimensions of the exterior bearing pad shall be provided for each bearing pad location. A minimum 2 1/2" diameter lifting pin shall be used to engage the lifting loops during handling. Corrosion Inhibitor, per Article 1020.05(b)(10) and 1021.07 of the Standard Specifications, shall be used in the concrete for precast prestressed concrete deck beams. Compressive strength of prestressed concrete, f'c, shall be 6000 psi. Compressive strength of prestressed concrete at release, f'ci, shall be 5000 psi. Reinforcement bars designated (E) shall be epoxy coated.



BILL OF MATERIAL

Precast Prestressed Conc. Deck Bms. (21" depth)	Sq. Ft. 1,344
---	---------------



LIFTING LOOP DETAIL

PD-2148-LD 2-17-2017

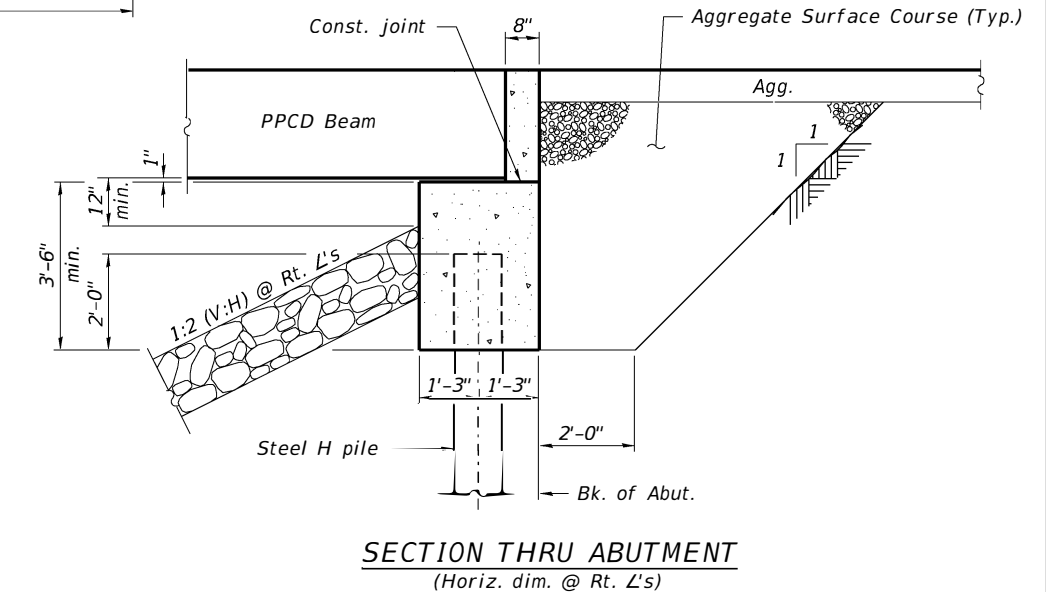
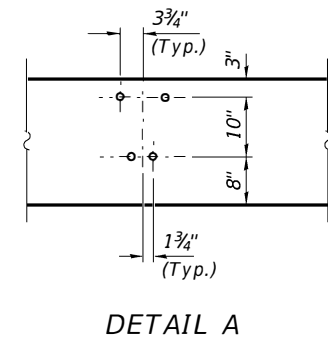
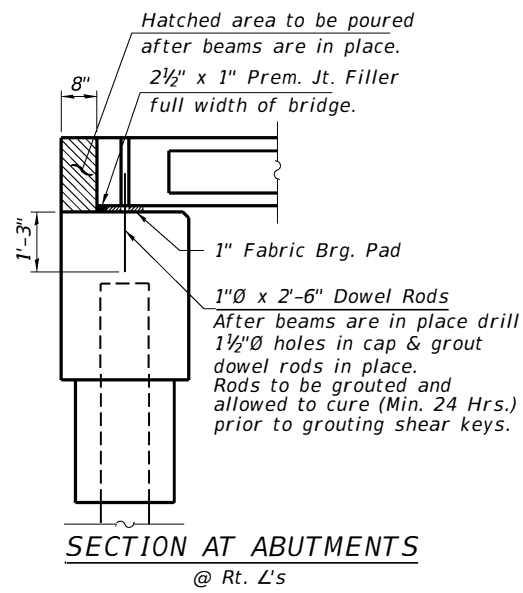
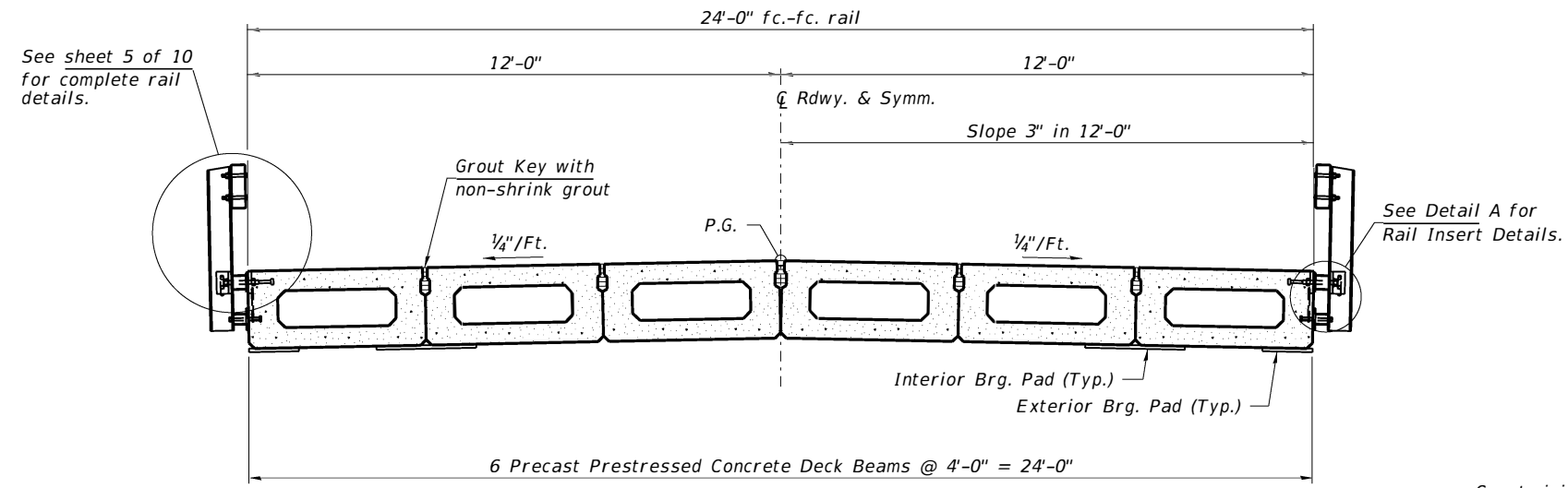
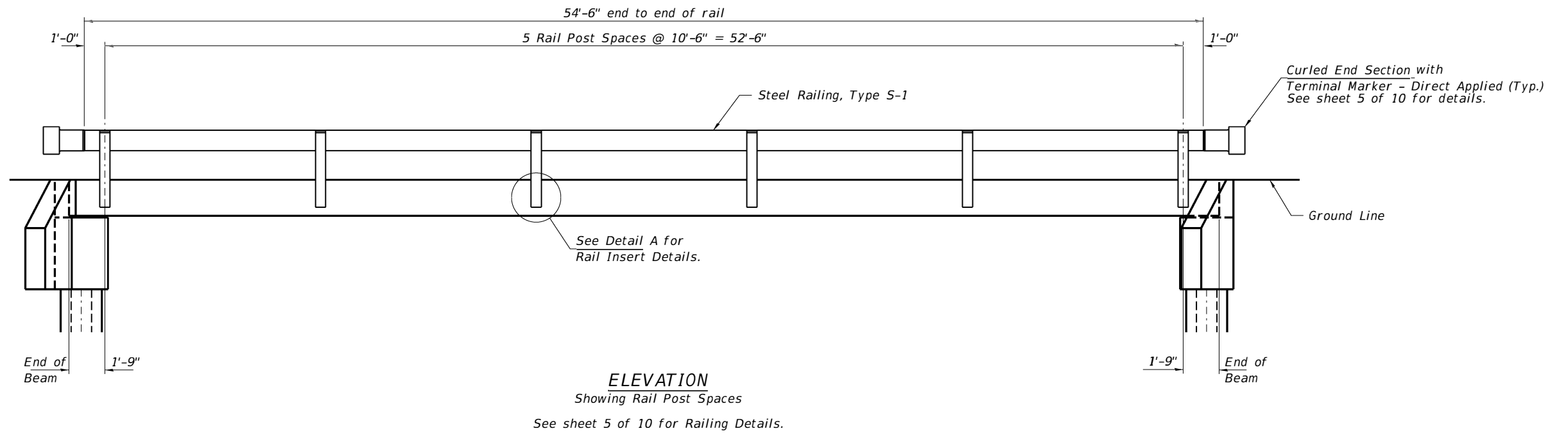
FILE NAME = 170695-shl-bridge.dgn	USER NAME = rmosick	DESIGNED - J.W.F.	REVISED -
HAMPTON, LENZINI AND RENWICK, INC. 3085 STEVENSON DRIVE, SUITE 201 SPRINGFIELD, ILLINOIS 62703 ILLINOIS PROFESSIONAL DESIGN FIRM L5 / PE / SE CORP. 184.009959	PLOT SCALE =	CHECKED - S.W.M.	REVISED -
	PLOT DATE = 12/11/2019	DRAWN - M.M.P.	REVISED -
		CHECKED - S.W.M.	REVISED -

STATE OF ILLINOIS
WHITE COUNTY HIGHWAY DEPARTMENT

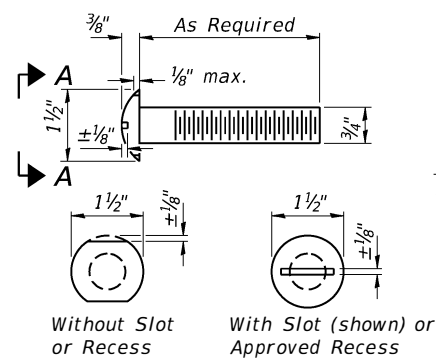
21" x 48" PPC DECK BEAM DETAILS
STRUCTURE NO. 097-3301

SHEET NO. 3 of 10 SHEETS

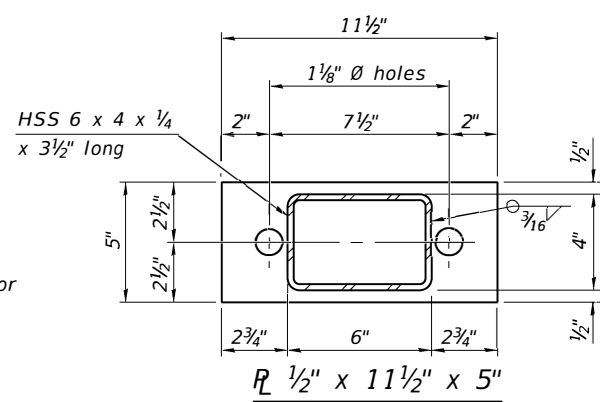
T.R.	SECTION	COUNTY	TOTAL SHEETS	SHEET NO.
181	16-04129-00-BR	WHITE	24	7
ENFIELD ROAD DISTRICT		CONTRACT NO. 99636		
ILLINOIS / FED. AID PROJECT 1YPK(657)				



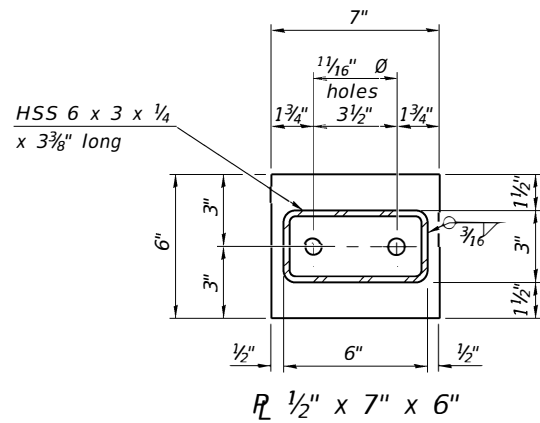
FILE NAME = 170695-sh1-bridge.dgn	USER NAME = rmosick	DESIGNED - J.W.F.	REVISED -	STATE OF ILLINOIS WHITE COUNTY HIGHWAY DEPARTMENT	SUPERSTRUCTURE DETAILS STRUCTURE NO. 097-3301	T.R.	SECTION	COUNTY	TOTAL SHEETS	SHEET NO.		
HAMPTON, LENZINI AND RENWICK, INC. <small>3085 STEVENSON DRIVE, SUITE 201 SPRINGFIELD, ILLINOIS 62703 ILLINOIS PROFESSIONAL DESIGN FIRM LS / PE / SE CORP. 184.000959</small>						CHECKED - S.W.M.	REVISED -	181	16-04129-00-BR	WHITE	24	8
PLOT SCALE =						DRAWN - M.M.P.	REVISED -	ENFIELD ROAD DISTRICT		CONTRACT NO. 99636		
PLOT DATE = 12/11/2019						CHECKED - S.W.M.	REVISED -	SHEET NO. 4 of 10 SHEETS				
<small>ILLINOIS FED. AID PROJECT 1YPK(657)</small>												



VIEW A-A
ROUND HEAD BOLT

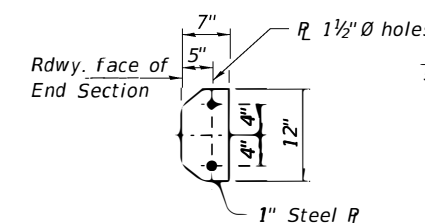


SECTION B-B
R 1/2" x 11 1/2" x 5"

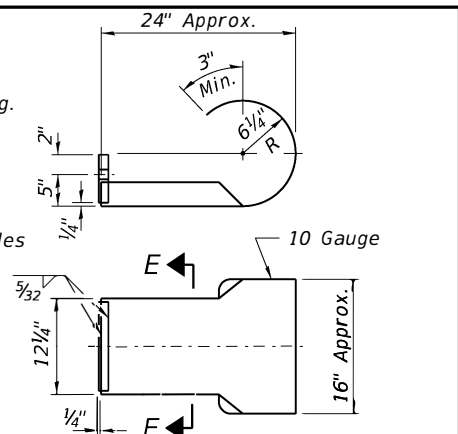


SECTION AT RAILING POST
R 1/2" x 7" x 6"

Note: Cost of curled end sections shall be included with the Steel Railing. (4 Required)



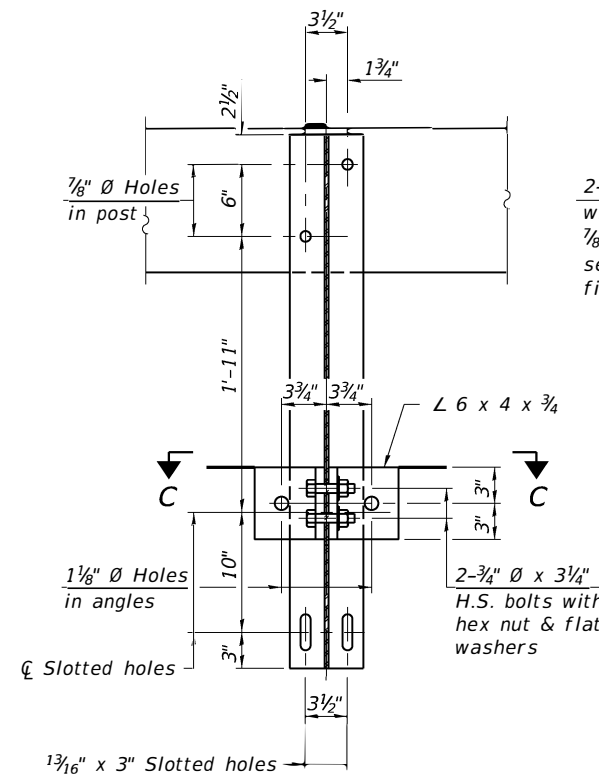
SECTION E-E **CURLED END SECTION DETAILS**



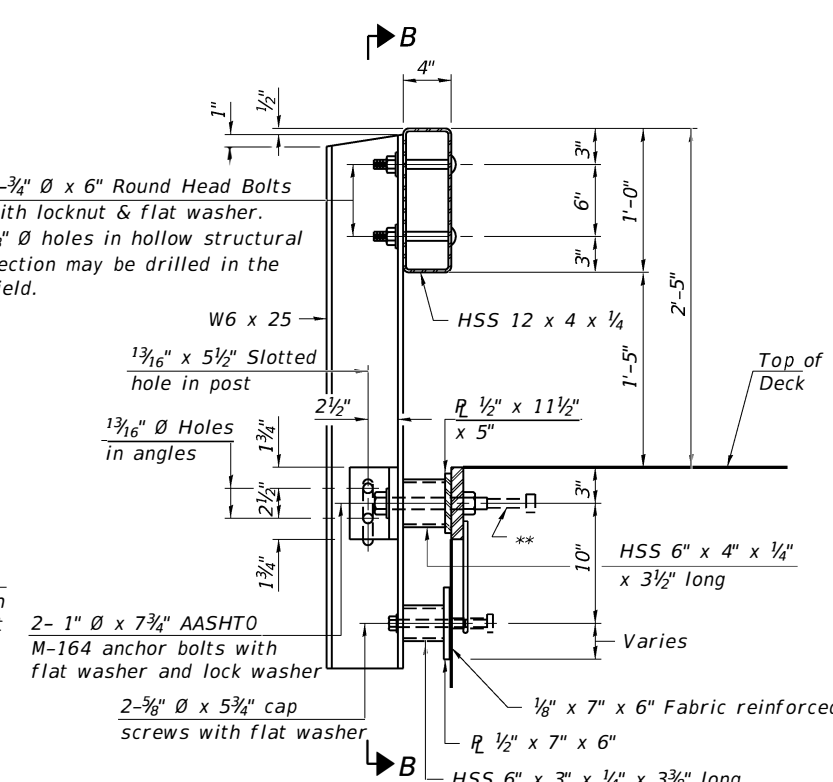
SPLICE DIMENSIONS

T	D	A	B	C	E
≤ 4"	2 1/2"	1'-8"	2"	4"	2 1/2"
> 4" ≤ 6 1/2"	3 3/4"	2'-0"	2 1/2"	5 1/2"	3 1/2"
> 6 1/2" ≤ 9"	5"	2'-4"	3 1/2"	6 1/2"	9"
> 9" ≤ 13"	7"	2'-10"	4 1/2"	8 1/2"	11"
Rail Splice	1/4"	1'-8"	2"	4"	---

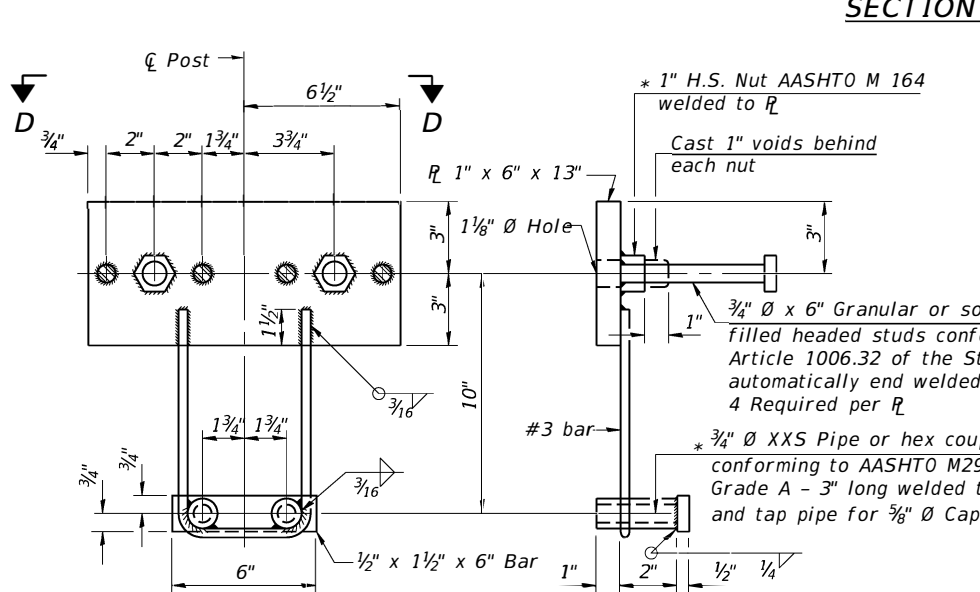
T = Total movement at expansion joint as shown on the design plans.



SECTION C-C



SECTION AT RAILING POST

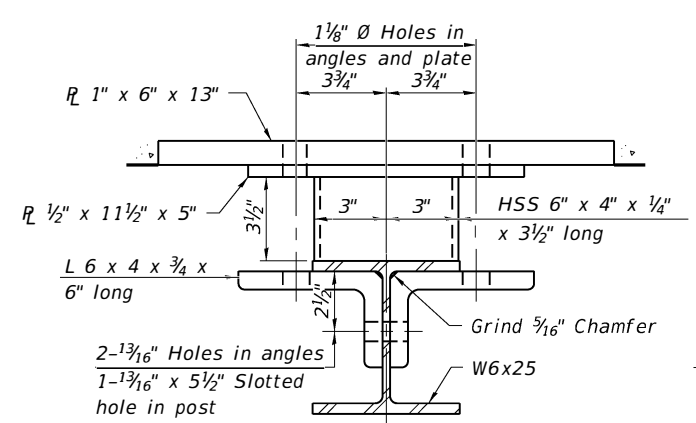


ANCHOR DEVICE

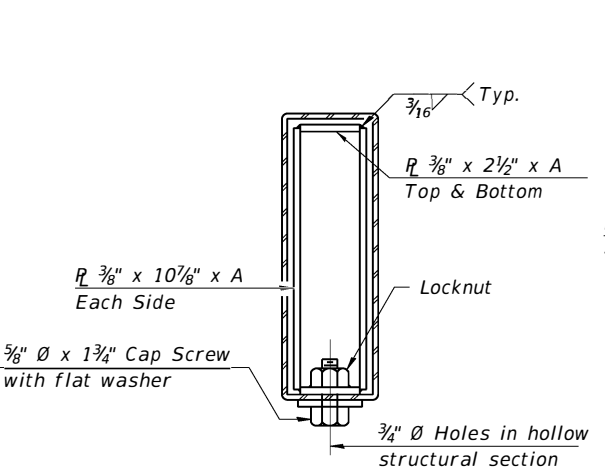
* Threaded areas shall be plugged or blocked off during casting of beam.

Notes:
For multi-span bridges, sufficient 1/4 inch x 6 inch x 1-2 inch galvanized steel shims shall be provided to align rail between adjacent spans. Cost included with Steel Railing, Type S-1.
All steel rail elements shall be galvanized according to Article 509.05 of the Standard Specifications.

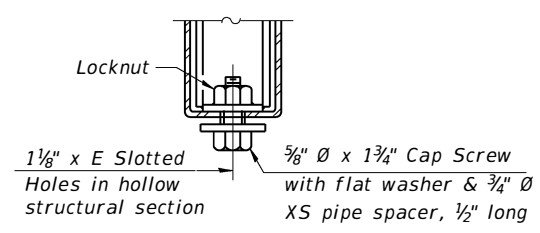
**The studs of the anchor devices shall be placed below the top reinforcement bars and the outermost longitudinal reinforcement bar shall be placed directly above the studs of the rail post anchor device. The anchorage studs may be bent down 1/2 inch to accommodate the top reinforcement bar placement.



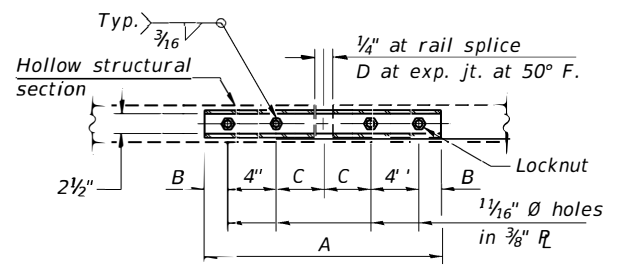
SECTION C-C



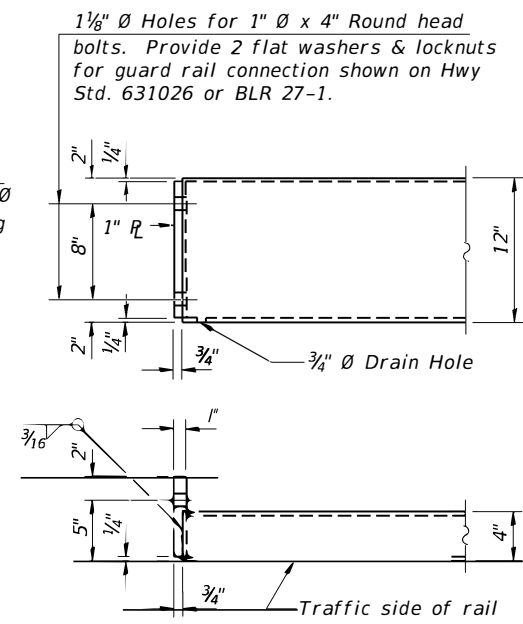
SECTIONS AT RAIL SPLICE



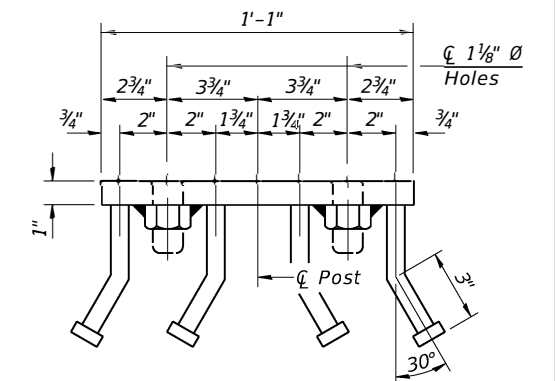
RAIL SPLICE CONNECTION AT EXPANSION JT.



PLAN-BOTT. SPLICE R TYPICAL



END OF RAIL DETAILS



VIEW D-D

BILL OF MATERIAL

Item	Unit	Quantity
Steel Railing, Type S-1	Foot	109

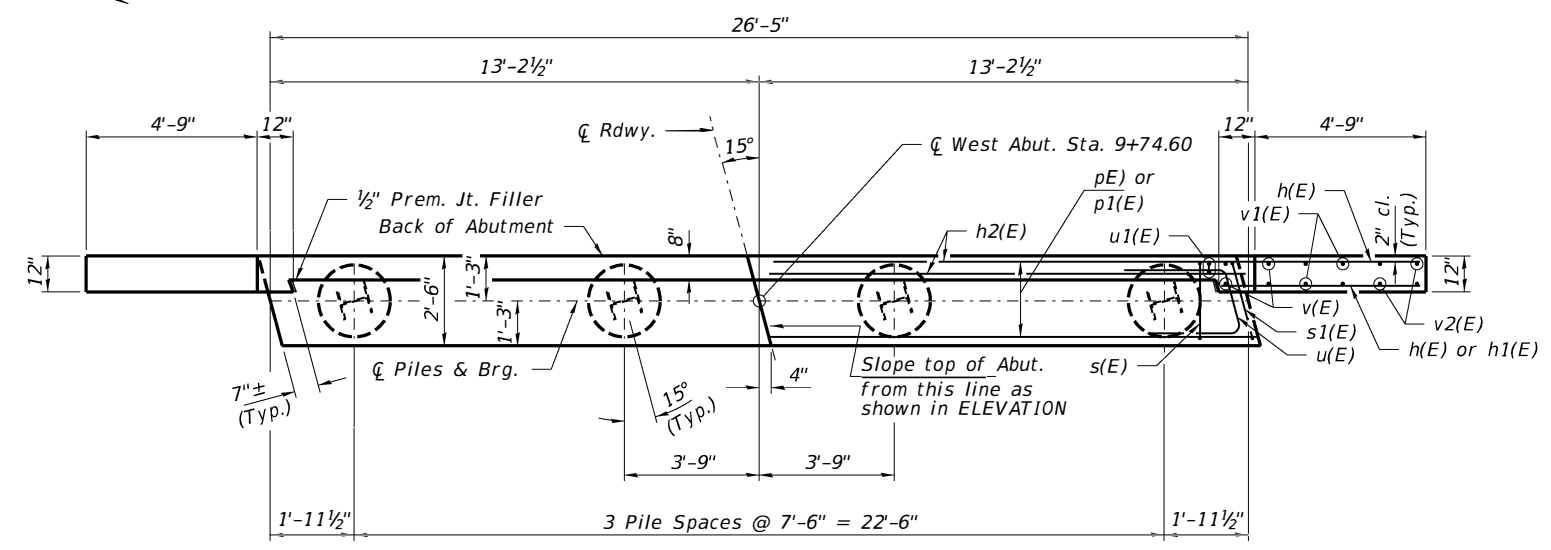
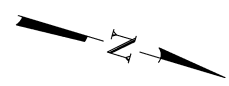
R-23A 8-11-2017 (10'-9" Maximum Post Spacing)

FILE NAME = 170695-ah-bridge.dgn	USER NAME = rmosick	DESIGNED - J.W.F.	REVISED -
HAMPTON, LENZINI AND RENWICK, INC. 3085 STEVENSON DRIVE, SUITE 201 SPRINGFIELD, ILLINOIS 62703 ILLINOIS PROFESSIONAL DESIGN FIRM L5 / PE / SE CORP. 184.009959	PLOT SCALE =	CHECKED - S.W.M.	REVISED -
	PLOT DATE = 12/11/2019	DRAWN - M.M.P.	REVISED -
		CHECKED - S.W.M.	REVISED -

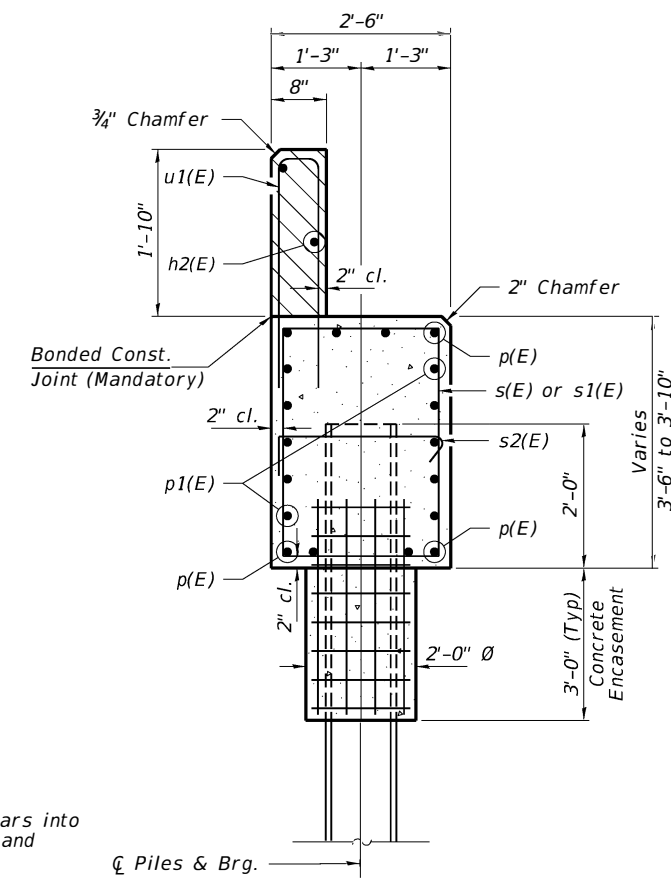
STATE OF ILLINOIS
WHITE COUNTY HIGHWAY DEPARTMENT

RAILING DETAILS
STRUCTURE NO. 097-3301
SHEET NO. 5 of 10 SHEETS

T.R.	SECTION	COUNTY	TOTAL SHEETS	SHEET NO.
181	16-04129-00-BR	WHITE	24	9
ENFIELD ROAD DISTRICT		CONTRACT NO. 99636		
ILLINOIS FED. AID PROJECT 1YPK(657)				

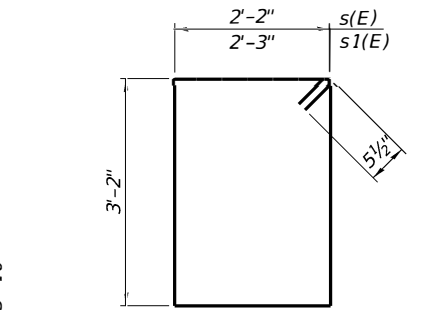


PLAN

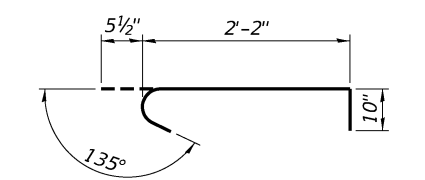


SECTION A-A

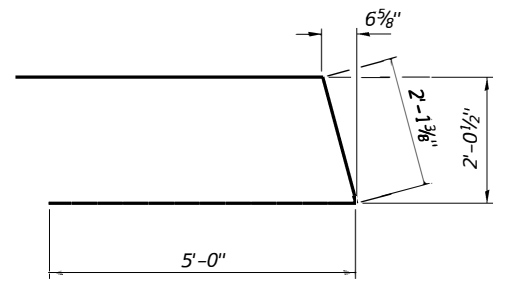
Hatched area to be poured after beams are in place.
Cast top of wingwall flush with exterior beam face after beams have been erected.



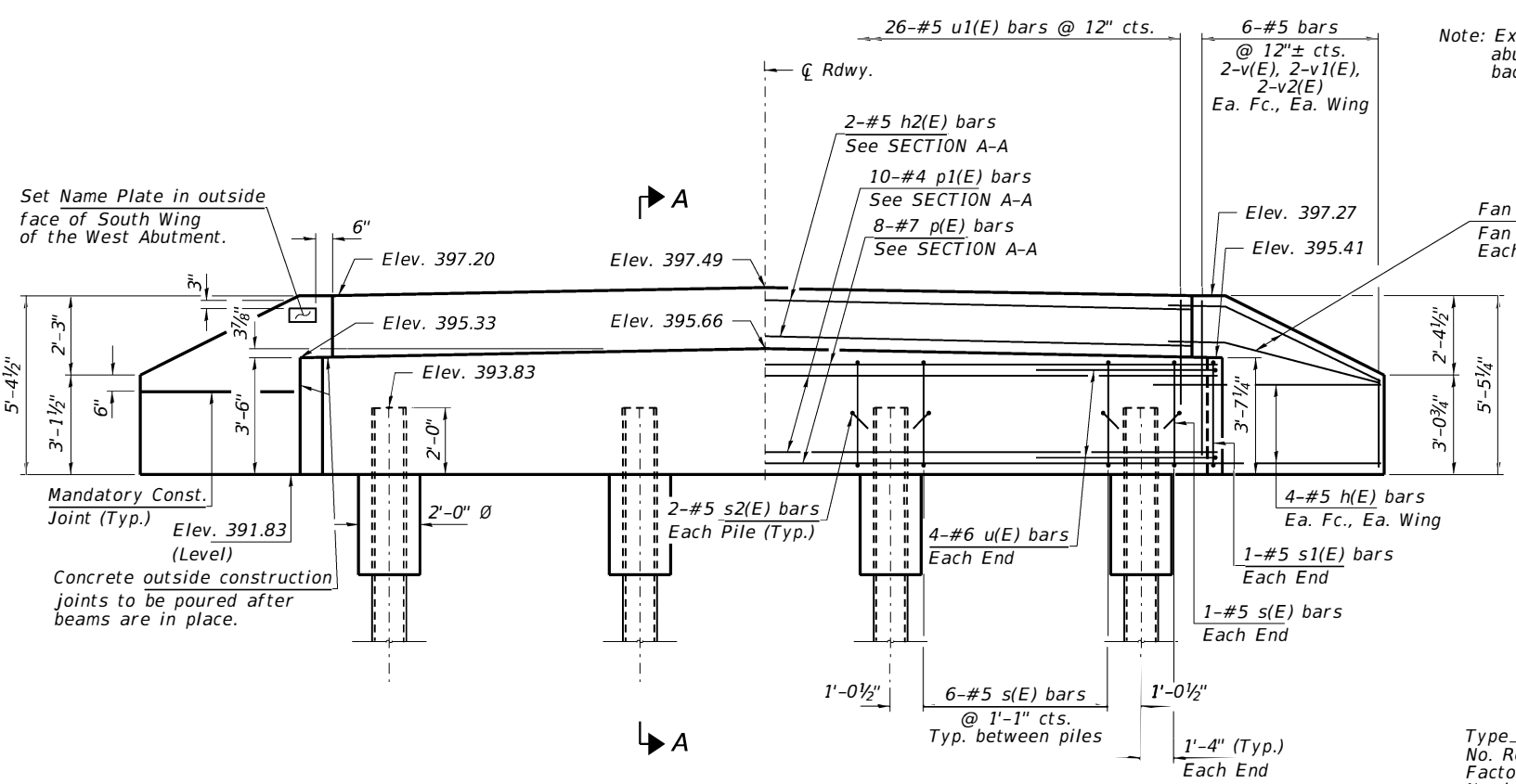
BARS s(E) & s1(E)



BAR s2(E)



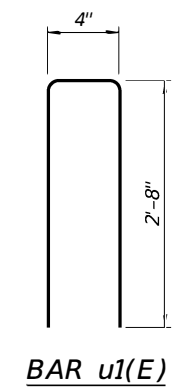
BAR u(E)



ELEVATION
(Looking East)

Note: Extend h(E) bars into abutment cap and backwall.

Fan 2-#5 h(E) bars (B.F.)
Fan 2-#5 h1(E) bars (F.F.)
Each Wing, Bend in field.



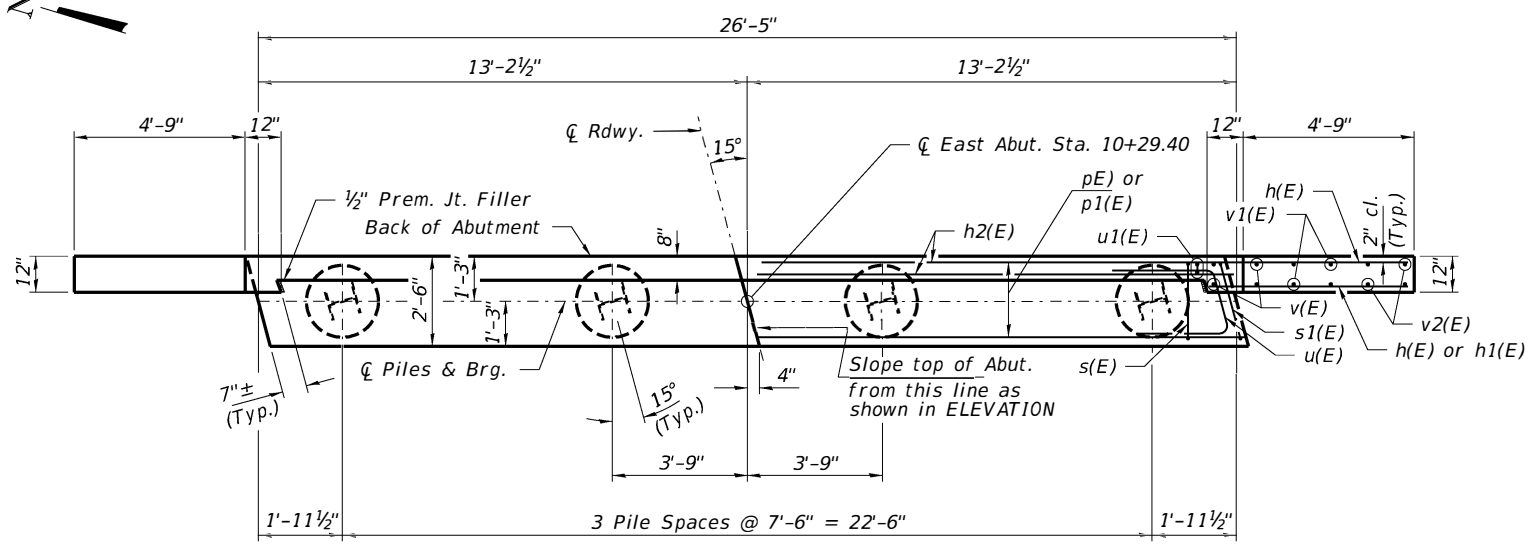
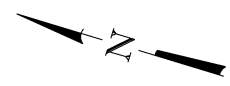
BAR u1(E)

PILE DATA

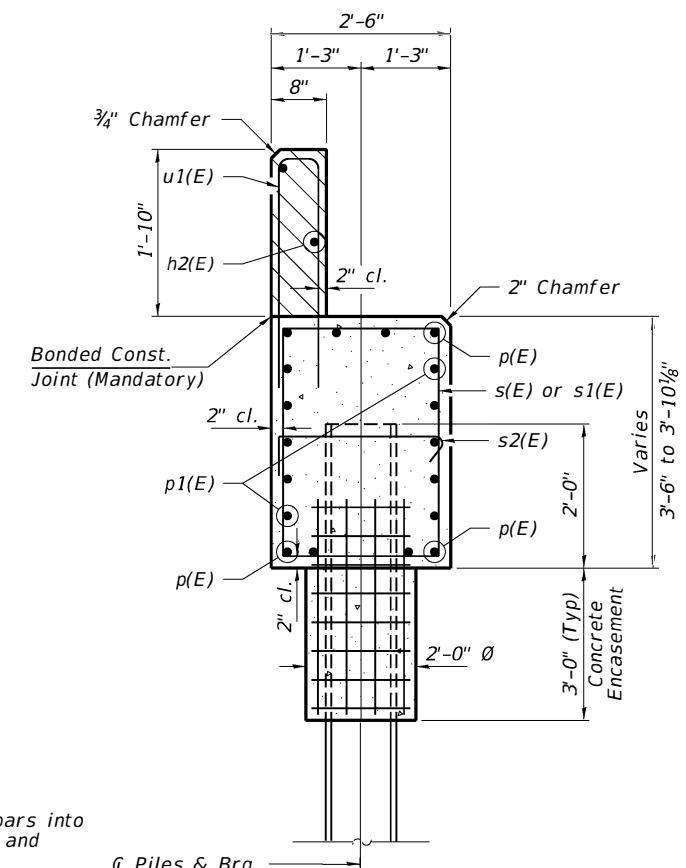
Type _____ Steel HP10x42
No. Req'd. (W. Abut.) _____ 4
Factored Resistance Available (Rf) _____ 184 Kips/Pile
Nominal Required Bearing (Rn) _____ 335 Kips/Pile
Est. Length _____ 50 Ft/Pile

BILL OF MATERIAL - W. ABUT.

BAR	NO.	SIZE	LENGTH	SHAPE
h(E)	20	#5	7'-0"	—
h1(E)	4	#5	5'-6"	—
h2(E)	2	#5	26'-1"	—
p(E)	8	#7	26'-1"	—
p1(E)	10	#4	26'-1"	—
s(E)	20	#5	11'-7"	□
s1(E)	2	#5	11'-9"	□
s2(E)	8	#5	3'-6"	U
u(E)	8	#6	12'-2"	U
u1(E)	52	#5	5'-8"	U
v(E)	8	#5	4'-11"	—
v1(E)	8	#5	3'-10"	—
v2(E)	8	#5	2'-10"	—
Concrete Structures			Cu. Yd.	11.9
Concrete Encasement			Cu. Yd.	1.4
Reinf. Bars, Epoxy Coated			Pound	1,515
Furnishing Steel Piles HP10x42			Foot	200
Name Plates			Each	1

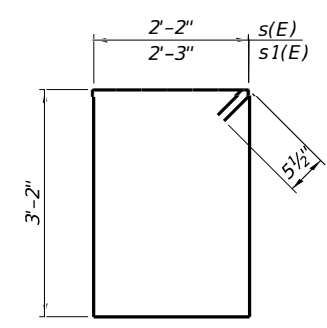


PLAN

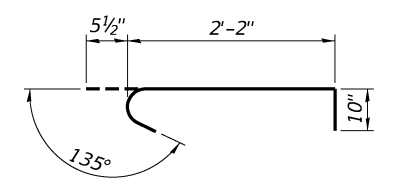


SECTION A-A

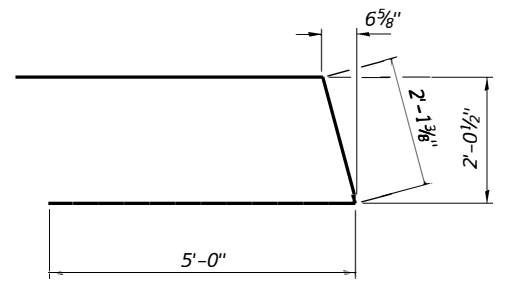
Hatched area to be poured after beams are in place.
Cast top of wingwall flush with exterior beam face after beams have been erected.



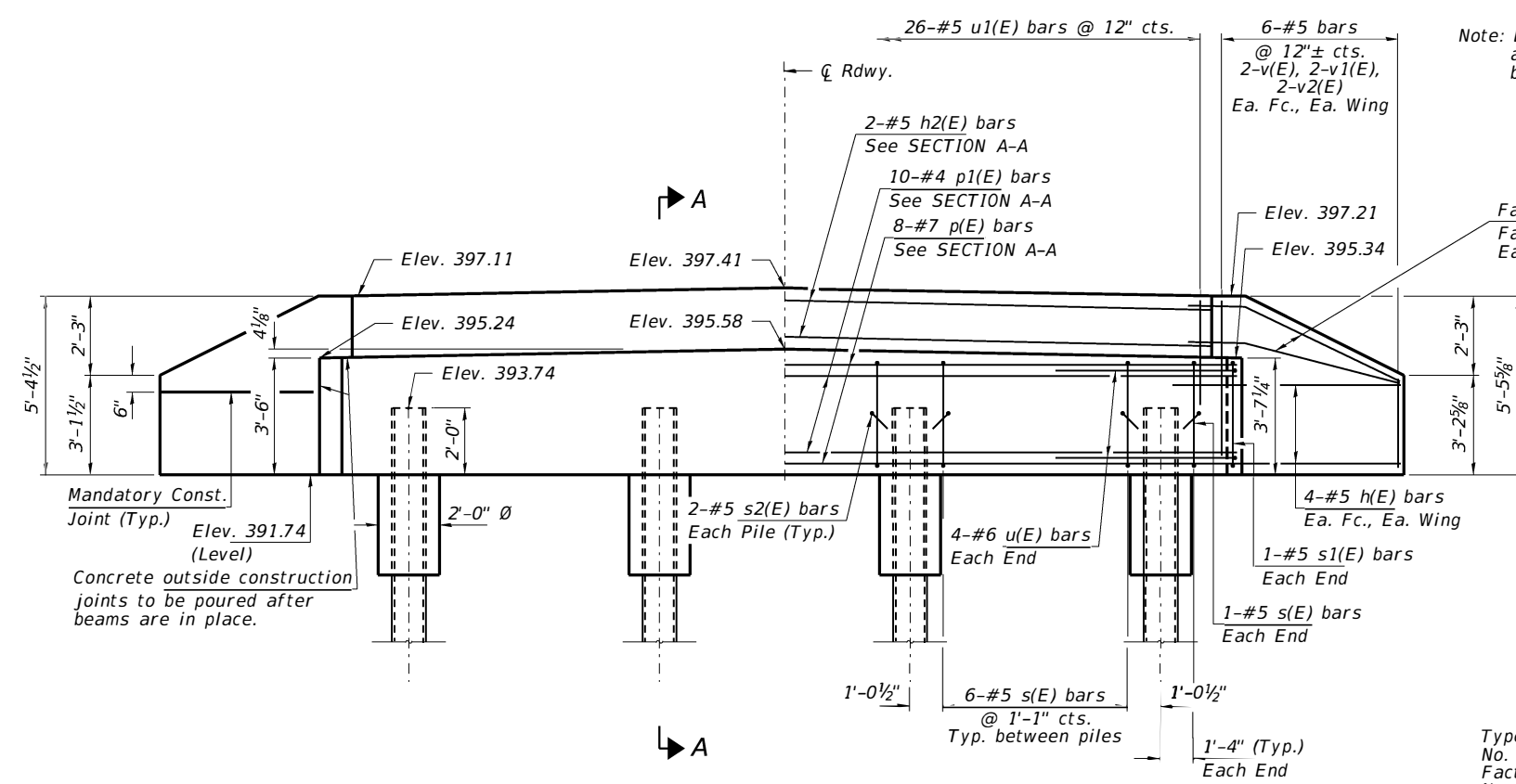
BARS s(E) & s1(E)



BAR s2(E)



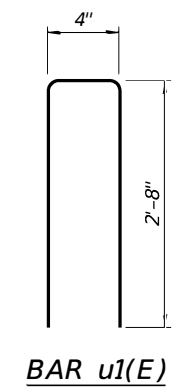
BAR u(E)



ELEVATION
(Looking West)

Note: Extend h(E) bars into abutment cap and backwall.

Fan 2-#5 h(E) bars (B.F.)
Fan 2-#5 h1(E) bars (F.F.)
Each Wing, Bend in field.



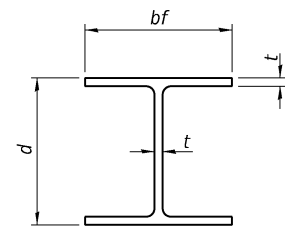
BAR u1(E)

PILE DATA

Type _____ Steel HP10x42
No. Req'd. (E. Abut.) _____ 4
Factored Resistance Available (Rf) _____ 184 Kips/Pile
Nominal Required Bearing (Rn) _____ 335 Kips/Pile
Est. Length _____ 50 Ft/Pile

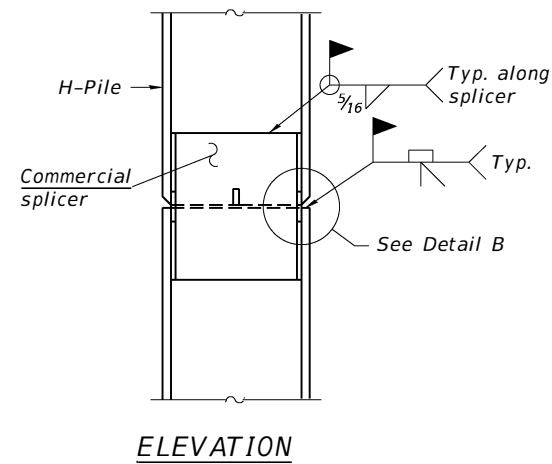
BILL OF MATERIAL - E. ABUT.

BAR	NO.	SIZE	LENGTH	SHAPE
h(E)	20	#5	7'-0"	—
h1(E)	4	#5	5'-6"	—
h2(E)	2	#5	26'-1"	—
p(E)	8	#7	26'-1"	—
p1(E)	10	#4	26'-1"	—
s(E)	20	#5	11'-7"	□
s1(E)	2	#5	11'-9"	□
s2(E)	8	#5	3'-6"	┌
u(E)	8	#6	12'-2"	—
u1(E)	52	#5	5'-8"	—
v(E)	8	#5	4'-11"	—
v1(E)	8	#5	3'-10"	—
v2(E)	8	#5	2'-10"	—
Concrete Structures			Cu. Yd.	11.9
Concrete Encasement			Cu. Yd.	1.4
Reinf. Bars, Epoxy Coated			Pound	1,515
Furnishing Steel Piles HP10x42			Foot	200

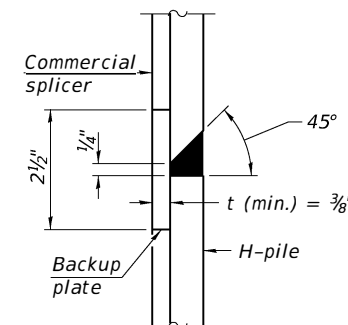


STEEL PILE TABLE

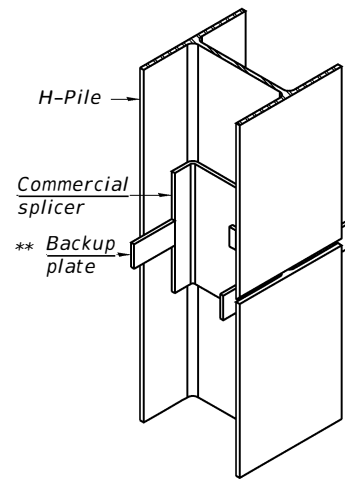
Designation	Depth d	Flange width bf	Web and Flange thickness t	Encasement diameter A
HP 14x117	14 1/4"	14 7/8"	1 3/16"	30"
x102	14"	14 3/4"	1 1/16"	30"
x89	13 7/8"	14 3/4"	5/8"	30"
x73	13 5/8"	14 5/8"	1/2"	30"
HP 12x84	12 1/4"	12 1/4"	1 1/16"	24"
x74	12 1/8"	12 1/4"	5/8"	24"
x63	12"	12 1/8"	1/2"	24"
x53	11 3/4"	12"	7/16"	24"
HP 10x57	10"	10 1/4"	9/16"	24"
x42	9 3/4"	10 1/8"	7/16"	24"
HP 8x36	8"	8 1/8"	7/16"	18"



ELEVATION

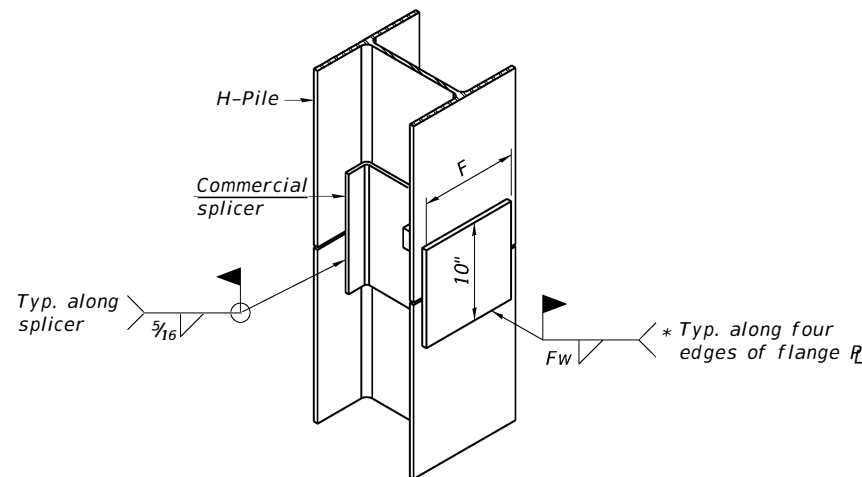


DETAIL "B"



ISOMETRIC VIEW

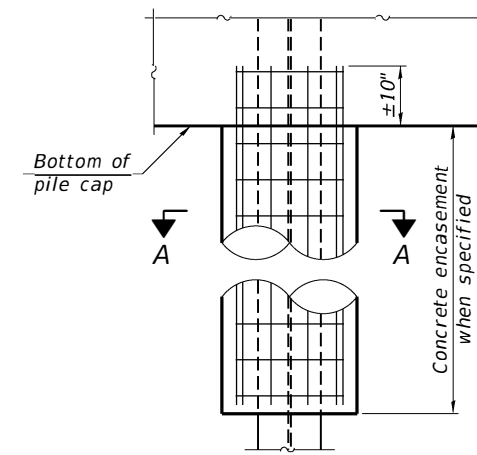
WELDED COMMERCIAL SPLICE



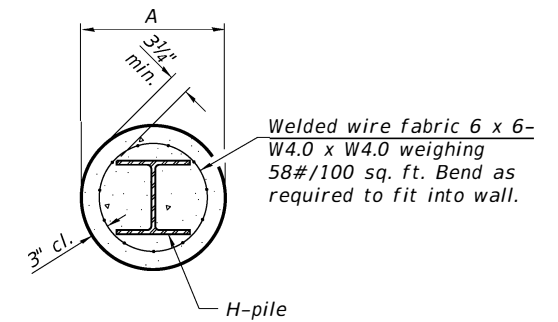
ISOMETRIC VIEW

WELDED COMMERCIAL SPLICE ALTERNATE

- * Interrupt welds 1/4" from end of web and/or each flange.
- ** Remove portions of backup plates that extend outside the flanges.
- *** Weld size per pile shoe manufacturer (5/16" min.).

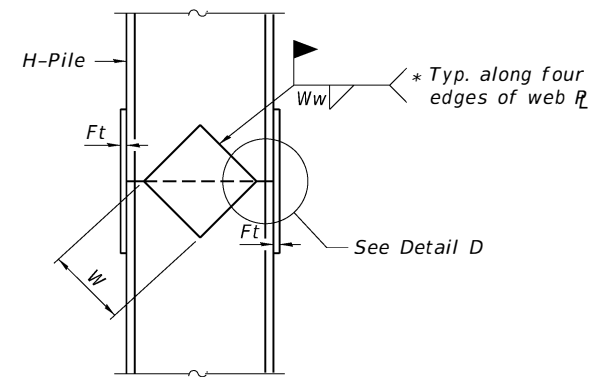


ELEVATION

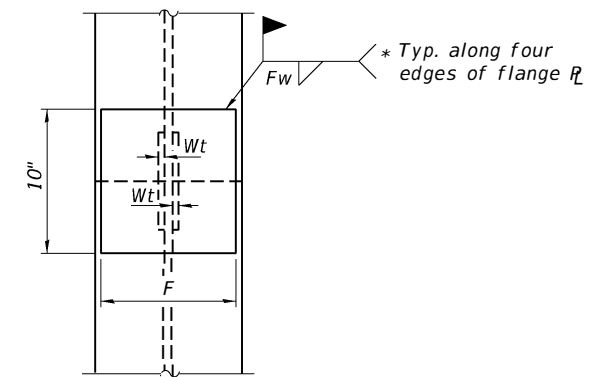


SECTION A-A

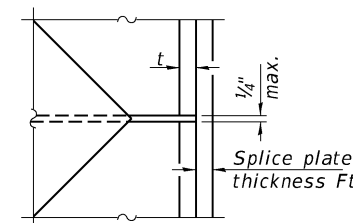
INDIVIDUAL PILE
CONCRETE ENCASUREMENT
(Forms for encasement may be omitted when soil conditions permit).



ELEVATION



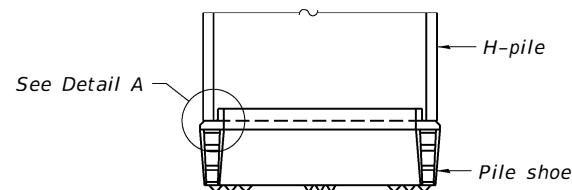
END VIEW



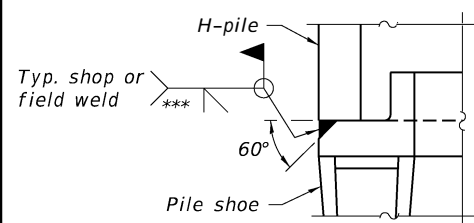
DETAIL D

WELDED PLATE FIELD SPLICE

Designation	F	Ft	Fw	W	Wt	Ww
HP 14x117	12 1/2"	1"	7/8"	7 3/4"	5/8"	1/2"
x102	12 1/2"	7/8"	3/4"	7 3/4"	5/8"	1/2"
x89	12 1/2"	3/4"	1 1/16"	7 3/4"	5/8"	1/2"
x73	12 1/2"	5/8"	9/16"	7 3/4"	5/8"	1/2"
HP 12x84	10"	7/8"	1 1/16"	6 1/2"	5/8"	1/2"
x74	10"	7/8"	1 1/16"	6 1/2"	5/8"	1/2"
x63	10"	5/8"	1/2"	6 1/2"	1/2"	3/8"
x53	10"	5/8"	1/2"	6 1/2"	1/2"	3/8"
HP 10x57	8"	3/4"	9/16"	5 1/4"	1/2"	3/8"
x42	8"	5/8"	9/16"	5 1/4"	1/2"	3/8"
HP 8x36	7"	5/8"	7/16"	4 1/4"	1/2"	3/8"



ELEVATION



DETAIL A

SHOE ATTACHMENT

Note:
The steel H-piles shall be according to AASHTO M270 Grade 50.

F-HP 2-17-2017

FILE NAME = 170695-sh1-bridge.dgn	USER NAME = rmosick	DESIGNED - J.W.F.	REvised -	STATE OF ILLINOIS WHITE COUNTY HIGHWAY DEPARTMENT	HP PILE DETAILS STRUCTURE NO. 097-3301	T.R.	SECTION	COUNTY	TOTAL SHEETS	SHEET NO.
HAMPTON, LENZINI AND RENWICK, INC. 3085 STEVENSON DRIVE, SUITE 201 SPRINGFIELD, ILLINOIS 62763 ILLINOIS PROFESSIONAL DESIGN FIRM LS / PE / SE CORP. 184.000959	PLOT SCALE =	CHECKED - S.W.M.	REvised -			181	16-04129-00-BR	WHITE	24	12
	PLOT DATE = 12/11/2019	DRAWN - M.M.P.	REvised -			ENFIELD ROAD DISTRICT		CONTRACT NO. 99636		
		CHECKED - S.W.M.	REvised -			ILLINOIS		FED. AID PROJECT 1YPK(657)		

SHEET NO. 8 of 10 SHEETS

HOLCOMB FOUNDATION ENGINEERING INC.
 393 Wood Road 618-529-5262
 Carbondale, IL 62901 618-457-8991 fax Page 1 of 2

Bridge Foundation Boring Log

Project: H-17170 Bridge TR-181 over Gowdy Creek Date: 8/31/2017
 Section: 16-04129-00-BR Station _____ Bored by: B. Schwartz
 Structure: 097-3079 _____ Checked By: T. Holcomb
 County: White _____

Boring No: 1		Surface Water Elev. _____		Elevation		Qu tsf		w %	
Station: _____		Ground Water Elev. _____		N		Qu		w %	
Offset: _____		During Drilling 82.7379.8		Z		tsf		%	
		Upon Completion 84.7381.8		Elevation		Qu		w %	
Ground Surface 395.8 98.7		0							
1" A-3 over 1" Crushed Stone Clay and Gravel Mix		394.3 97.2							
Brown Mottled Gray Silty CLAY (A-6)		392.3 95.2		7		1.8S 17		-25 3 0.9S 21	
Gray Mottled Brown Silty CLAY (A-6)		389.8 92.7		-5		0 0.3B 28		7 1.7S 18	
Gray Silty CLAY (A-6)		386.3 89.2		3		1.0S 25		-30 27 -- 17	
Gray-Brown SAND (A-2-4) with gravel		384.8 87.7		-10		6 0.7S 25		-55	
Gray Mottled Brown Silty CLAY (A-6)		369.8 72.7		8		2.6S 25		-35 8 1.7S 21	
		367.3 70.2		-15		6 1.1B 25		-60	
Gray SAND (A-2-4)		362.3 65.2		3		0.6B 28		-40 80 2.5S 20	
Gray Silty CLAY (A-6) with pebbles		352.3 55.2		-20		4 1.5S 29		-65	
Gray SHALE				2		0.8B 21		100 /2" 2.1S 13	

N = Standard Penetration Test Blows per foot to drive 2" O.D. Split Spoon Sampler 12" with a 140 lbs. hammer falling 30"
 Qu-Unconfined Compressive Strength in tons/sq.ft.
 w-Water Content-percentage of oven dry weight-%
 B = Bulge Failure
 S = Shear Failure
 E = Estimated Value
 P = Penetrometer

HOLCOMB FOUNDATION ENGINEERING INC.
 393 Wood Road 618-529-5262
 Carbondale, IL 62901 618-457-8991 fax Page 2 of 2

Bridge Foundation Boring Log

Project: H-17170 Bridge TR-181 over Gowdy Creek Date: 8/31/2017
 Section: 16-04129-00-BR Station _____ Bored by: B. Schwartz
 Structure: 097-3079 _____ Checked By: T. Holcomb
 County: White _____

Boring No: 1		Surface Water Elev. _____		Elevation		Qu tsf		w %	
Station: _____		Ground Water Elev. _____		N		Qu		w %	
Offset: _____		During Drilling 82.7379.8		Z		tsf		%	
		Upon Completion 84.7381.8		Elevation		Qu		w %	
shale (continued)		4.5							
		100 /3"		0.9S		14		-70	
		346.8 49.7		100 /3"		-- 7			
End of Boring @ -49.0'		-50							
		-75							
		-55							
		-80							
		-60							
		-85							
		-65							

N = Standard Penetration Test Blows per foot to drive 2" O.D. Split Spoon Sampler 12" with a 140 lbs. hammer falling 30"
 Qu-Unconfined Compressive Strength in tons/sq.ft.
 w-Water Content-percentage of oven dry weight-%
 B = Bulge Failure
 S = Shear Failure
 E = Estimated Value
 P = Penetrometer

BORING 1

Bridge Foundation Boring Log

Project: H-17170 Bridge TR-181 over Gowdy Creek Date: 8/31/2017
 Section: 16-04129-00-BR Station _____ Bored by: B. Schwartz
 Structure: 097-3079 _____ Checked By: T. Holcomb
 County: White _____

Boring No.	Station	Offset	Elevation	N	Qu	tsf	w	%	Surface Water Elev.	Ground Water Elev.	During Drilling	Upon Completion
2			396.2	0						83.1	380.2	88.1
			394.7									
			390.2									
			380.2									
			352.7									
			370.2									
			362.7									
			380.2									
			390.2									
			394.7									
			396.2									

N = Standard Penetration Test Blows per foot to drive 2" O.D. Split Spoon Sampler 12" with a 140 lbs. hammer falling 30"
 Qu - Unconfined Compressive Strength in tons/sq.ft.
 w - Water Content - percentage of oven dry weight - %
 B = Bulge Failure
 S = Shear Failure
 E = Estimated Value
 P = Penetrometer

Bridge Foundation Boring Log

Project: H-17170 Bridge TR-181 over Gowdy Creek Date: 8/31/2017
 Section: 16-04129-00-BR Station _____ Bored by: B. Schwartz
 Structure: 097-3079 _____ Checked By: T. Holcomb
 County: White _____

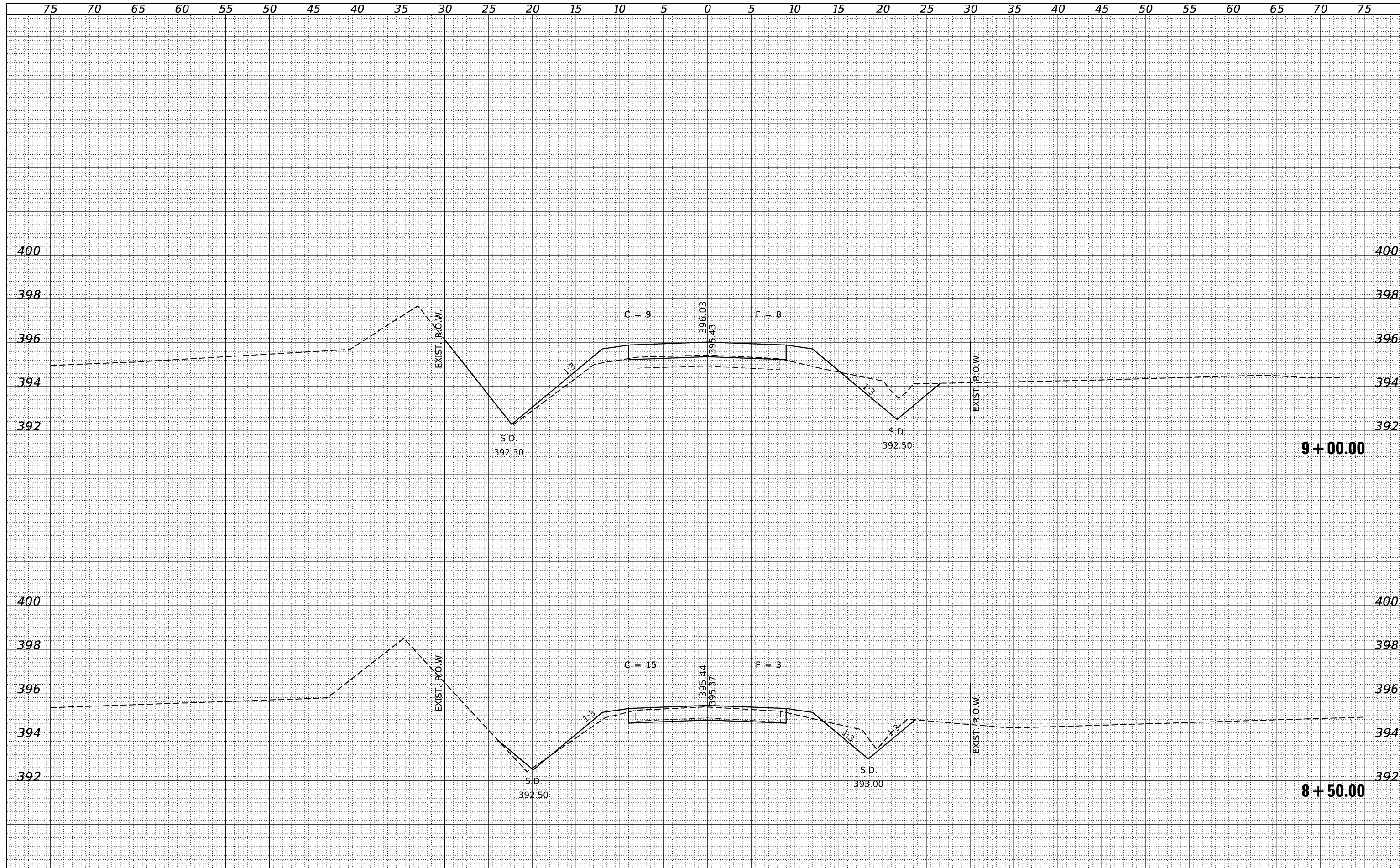
Boring No.	Station	Offset	Elevation	N	Qu	tsf	w	%	Surface Water Elev.	Ground Water Elev.	During Drilling	Upon Completion
2			396.2	0						83.1	380.2	88.1
			394.7									
			390.2									
			380.2									
			352.7									
			370.2									
			362.7									
			380.2									
			390.2									
			394.7									
			396.2									

N = Standard Penetration Test Blows per foot to drive 2" O.D. Split Spoon Sampler 12" with a 140 lbs. hammer falling 30"
 Qu - Unconfined Compressive Strength in tons/sq.ft.
 w - Water Content - percentage of oven dry weight - %
 B = Bulge Failure
 S = Shear Failure
 E = Estimated Value
 P = Penetrometer

BORING 2

BY	DATE

BY	DATE



FILE NAME = 170695-shf-xssheets.dgn
 DESIGNED - S.A.A.
 DRAWN - M.M.P.
 CHECKED - J.W.F.
 DATE - 12/11/19

USER NAME = rmosick
 PLOT SCALE = \$SCALE\$
 PLOT DATE = 12/11/2019

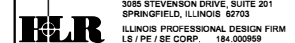
REVISIED -
 REVISIED -
 REVISIED -
 REVISIED -

STATE OF ILLINOIS
 WHITE COUNTY HIGHWAY DEPARTMENT

STATION CROSS SECTIONS

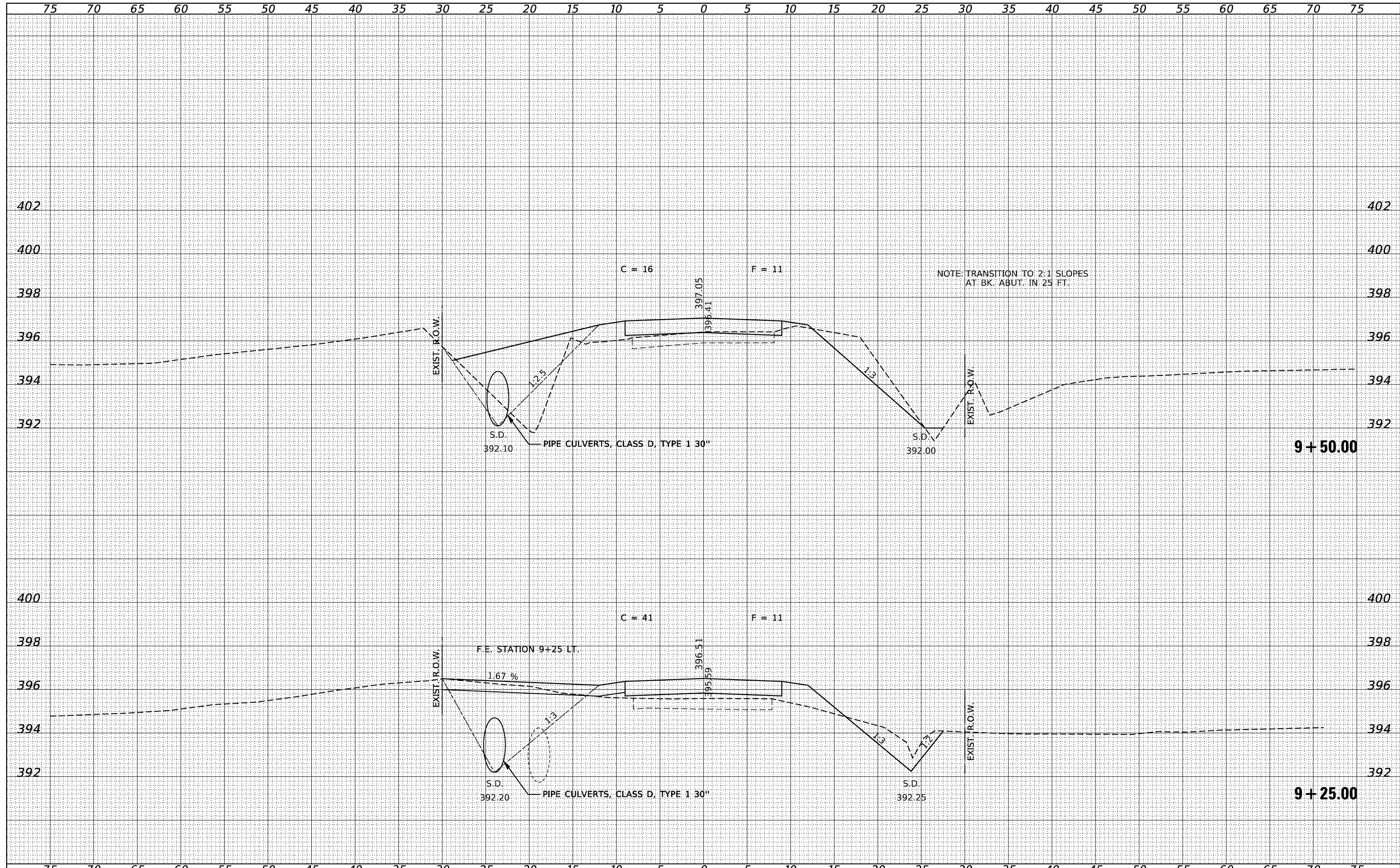
SCALE: 5H:2V SHEET NO. 3 OF 10 SHEETS STA. 8+50.00 TO STA. 9+00.00

T.R.	SECTION	COUNTY	TOTAL SHEETS	SHEET NO.
181	16-04129-00-BR	WHITE	24	17
ENFIELD ROAD DISTRICT			CONTRACT NO. 99636	
ILLINOIS FED. AID PROJECT 1YPK(657)				



BY: _____ DATE: _____
 SURVEYED _____
 PLOTTED _____
 TEMPLATE _____
 NOTE BOOK _____
 AREAS _____
 CHECKED _____
 NO. _____

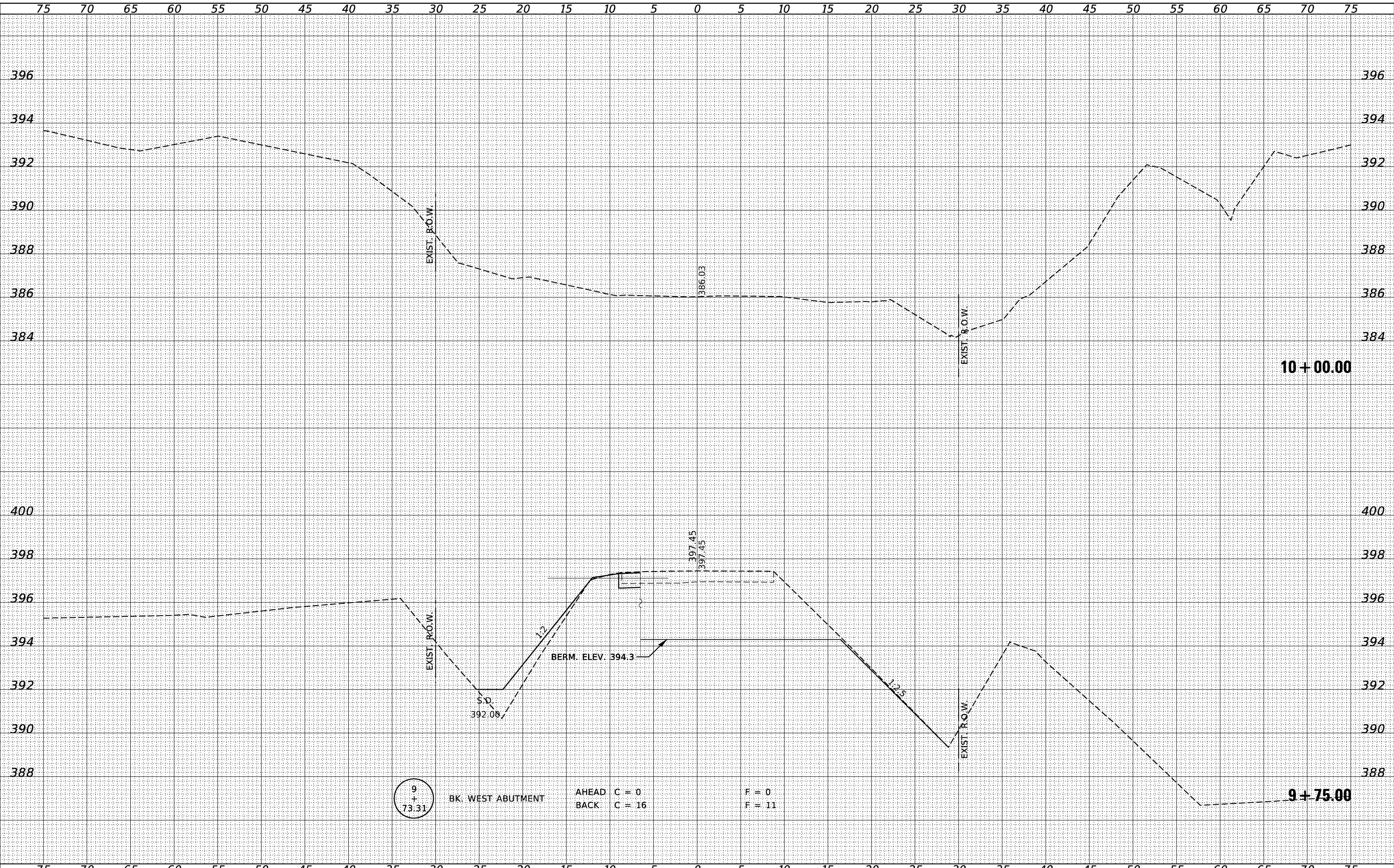
BY: _____ DATE: _____
 SURVEYED _____
 PLOTTED _____
 TEMPLATE _____
 NOTE BOOK _____
 AREAS _____
 CHECKED _____
 NO. _____



FILE NAME = 170695-sh1-xssheets.dgn	USER NAME = rmosick	DESIGNED - S.A.A.	REVISED -	STATE OF ILLINOIS WHITE COUNTY HIGHWAY DEPARTMENT	STATION CROSS SECTIONS			T.R.	SECTION	COUNTY	TOTAL SHEETS	SHEET NO.
HAMPTON, LENZINI AND RENWICK, INC. <small>3085 STEVENSON DRIVE, SUITE 201 SPRINGFIELD, ILLINOIS 62760 ILLINOIS PROFESSIONAL DESIGN FIRM L8 / PE / SE CORP. 184.000958</small>		DRAWN - M.M.P.	REVISED -		181	16-04129-00-BR	WHITE	24	18			
PLOT SCALE = \$SCALE\$		CHECKED - J.W.F.	REVISED -		ENFIELD ROAD DISTRICT			CONTRACT NO. 99636				
PLOT DATE = 12/11/2019		DATE - 12/11/19	REVISED -		SCALE: 5H:2V	SHEET NO. 4 OF 10 SHEETS	STA. 9+25.00	TO STA. 9+50.00		ILLINOIS FED. AID PROJECT 1YPK(657)		

BY	DATE
FINL	SURVEYED
SURV	PLOTTED
NOTE	TEMPLATE
BOOK	AREAS
NO.	CHECKED

BY	DATE
ORIGI	SURVEYED
NAL	PLOTTED
SURV	TEMPLATE
NOTE	AREAS
BOOK	CHECKED
NO.	



FILE NAME = 170695-shf-xssheets.dgn
 HAMPTON, LENZINI AND RENWICK, INC.
 3085 STEVENSON DRIVE, SUITE 201
 SPRINGFIELD, ILLINOIS 62703
 ILLINOIS PROFESSIONAL DESIGN FIRM
 LB / PE / SE CORP. 184.000959

USER NAME = rmosick
 PLOT SCALE = \$SCALE\$
 PLOT DATE = 12/11/2019

DESIGNED - S.A.A.
 DRAWN - M.M.P.
 CHECKED - J.W.F.
 DATE - 12/11/19

REVISED -
 REVISED -
 REVISED -
 REVISED -

STATE OF ILLINOIS
 WHITE COUNTY HIGHWAY DEPARTMENT

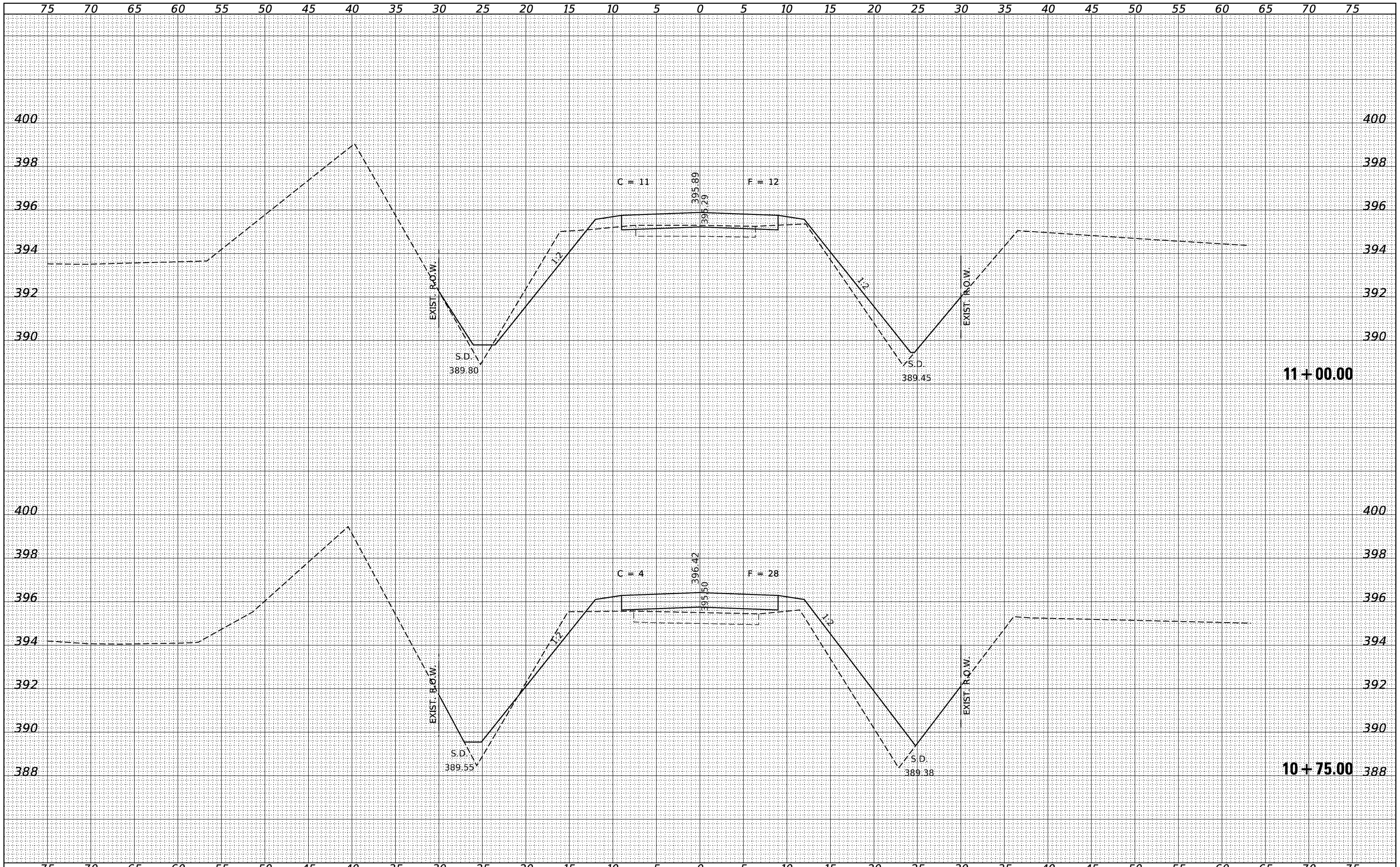
STATION CROSS SECTIONS
 SCALE: 5H:2V
 SHEET NO. 5 OF 10 SHEETS
 STA. 9+75.00 TO STA. 10+00.00

T.R.	SECTION	COUNTY	TOTAL SHEETS	SHEET NO.
181	16-04129-00-BR	WHITE	24	19
ENFIELD ROAD DISTRICT			CONTRACT NO. 99636	

ILLINOIS FED. AID PROJECT 1YPK(657)

BY	DATE

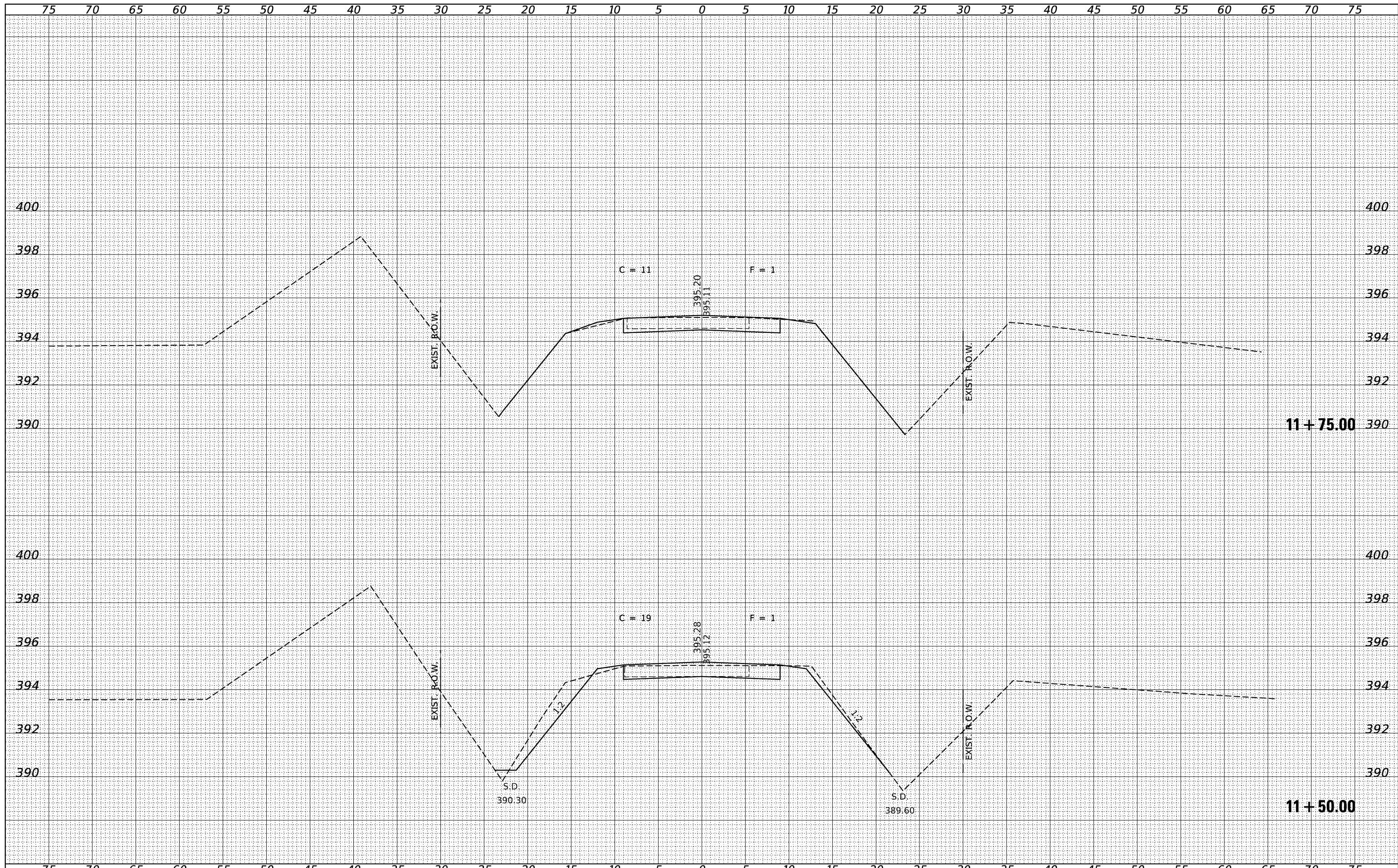
BY	DATE



FILE NAME = 170695-sh1-xssheets.dgn	USER NAME = rnosick	DESIGNED - S.A.A.	REVISIED -	STATE OF ILLINOIS WHITE COUNTY HIGHWAY DEPARTMENT	STATION CROSS SECTIONS			T.R.	SECTION	COUNTY	TOTAL SHEETS	SHEET NO.	
HAMPTON, LENZINI AND RENWICK, INC. 3085 STEVENSON DRIVE, SUITE 201 SPRINGFIELD, ILLINOIS 62703 ILLINOIS PROFESSIONAL DESIGN FIRM L1 / PE / SE CORP. 184.000959	PLOT SCALE = \$\$SCALE\$\$	DRAWN - M.M.P.	REVISIED -		181	16-04129-00-BR	WHITE	24	21				
PLOT DATE = 12/11/2019	DATE - 12/11/19	CHECKED - J.W.F.	REVISIED -		ENFIELD ROAD DISTRICT				CONTRACT NO. 99636				
					SCALE: 5H:2V		SHEET NO. 7 OF 10 SHEETS		STA. 10+75.00 TO STA. 11+00.00		ILLINOIS FED. AID PROJECT 1YPK(657)		

BY	DATE
FINISH	SURVEYED
NO. SURVEY	PLOTTED
NOTE BOOK	TEMPLATE
AREAS	AREAS
	CHECKED

BY	DATE
ORIGINAL	SURVEYED
NO. SURVEY	PLOTTED
NOTE BOOK	TEMPLATE
AREAS	AREAS
	CHECKED



FILE NAME = 170695-9ht-xssheets.dgn
 USER NAME = rnosick
 DESIGNED - S.A.A.
 DRAWN - M.M.P.
 CHECKED - J.W.F.
 DATE - 12/11/19

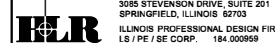
PLOT SCALE = \$SCALE\$
 PLOT DATE = 12/11/2019
 REVISIONS:
 REVISED -
 REVISED -
 REVISED -
 REVISED -

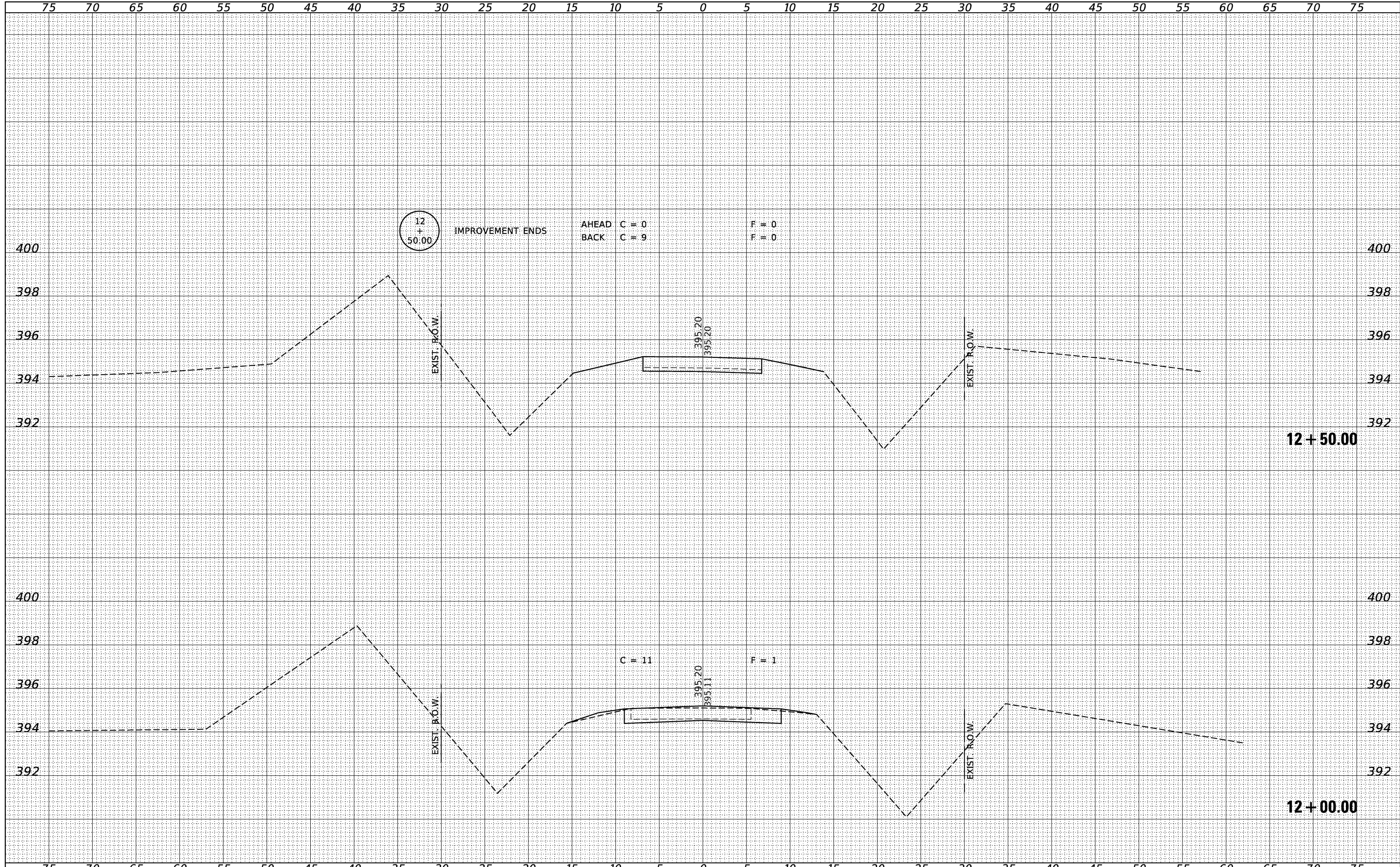
**STATE OF ILLINOIS
 WHITE COUNTY HIGHWAY DEPARTMENT**

STATION CROSS SECTIONS

SCALE: 5H:2V SHEET NO. 8 OF 10 SHEETS STA. 11+50.00 TO STA. 11+75.00

T.R.	SECTION	COUNTY	TOTAL SHEETS	SHEET NO.
181	16-04129-00-BR	WHITE	24	22
ENFIELD ROAD DISTRICT			CONTRACT NO. 99636	
ILLINOIS FED. AID PROJECT 1YPK(657)				





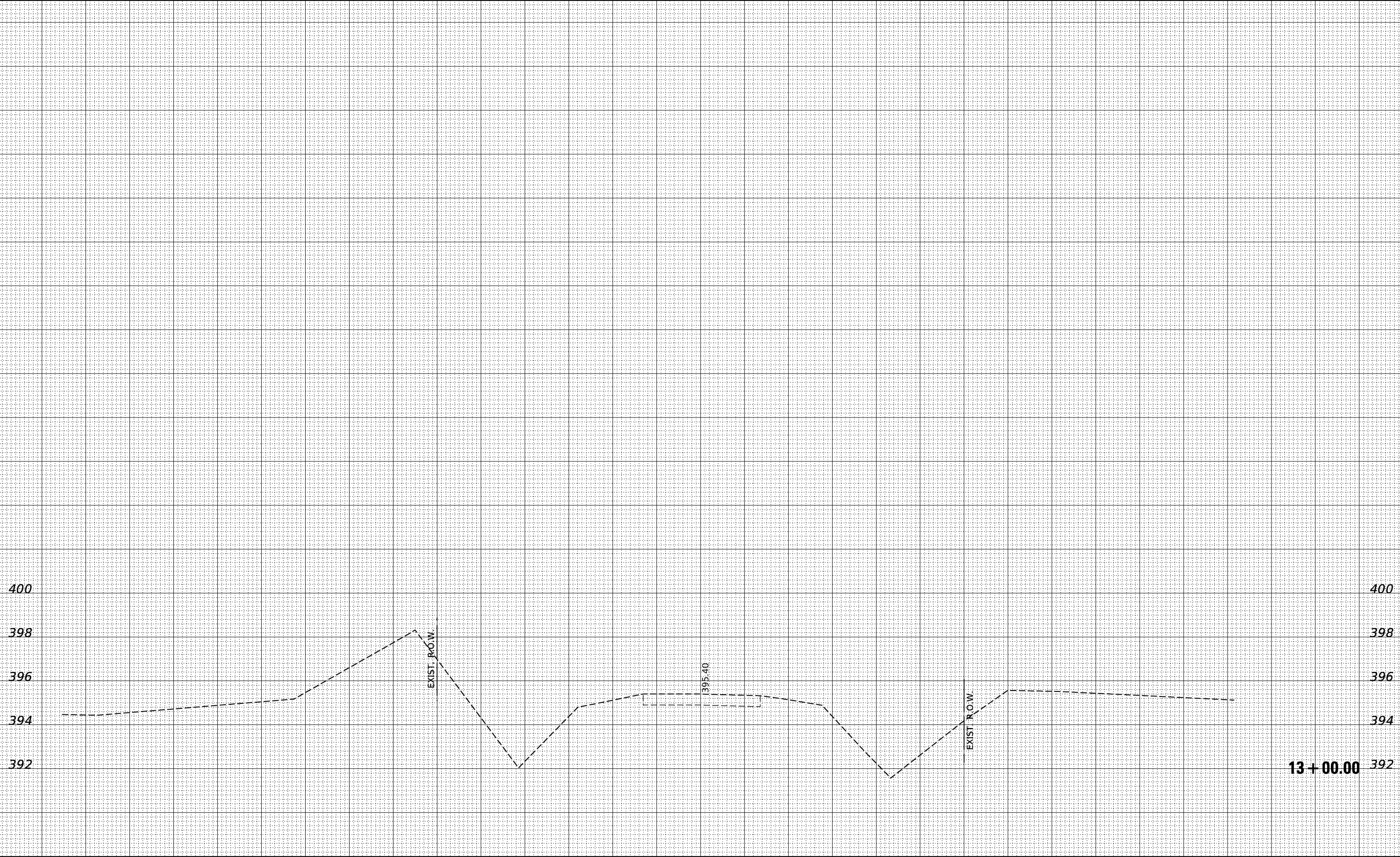
BY	DATE
FINL SURVEY	SURVEYED
NOTE BOOK	PLOTTED
NO.	TEMPLATE
	AREAS
	CHECKED

BY	DATE
ORIGINAL SURVEY	SURVEYED
NOTE BOOK	PLOTTED
NO.	TEMPLATE
	AREAS
	CHECKED

75 70 65 60 55 50 45 40 35 30 25 20 15 10 5 0 5 10 15 20 25 30 35 40 45 50 55 60 65 70 75

BY	DATE
FINISHED SURVEY	SURVEYED
NOTE BOOK	PLOTTED
NO.	TEMPLATE
	AREAS
	CHECKED

BY	DATE
ORIGINAL SURVEY	SURVEYED
NOTE BOOK	PLOTTED
NO.	TEMPLATE
	AREAS
	CHECKED



13+00.00

FILE NAME = 170695-shf-xssheets.dgn HAMPTON, LENZINI AND RENWICK, INC. 3085 STEVENSON DRIVE, SUITE 201 SPRINGFIELD, ILLINOIS 62760 ILLINOIS PROFESSIONAL DESIGN FIRM 1/31/PE / SE CORP. 184.000958	USER NAME = rmosick	DESIGNED - S.A.A. REVISIONS -	REVISIONS -
	PLOT SCALE = \$SCALE\$	CHECKED - J.W.F. DATE - 12/11/19	REVISIONS -

STATE OF ILLINOIS
WHITE COUNTY HIGHWAY DEPARTMENT

STATION CROSS SECTIONS

SCALE: 5H:2V SHEET NO. 10 OF 10 SHEETS STA. 13+00.00 TO STA. 13+00.00

T.R.	SECTION	COUNTY	TOTAL SHEETS	SHEET NO.
181	16-04129-00-BR	WHITE	24	24
ENFIELD ROAD DISTRICT			CONTRACT NO. 99636	

ILLINOIS FED. AID PROJECT 1YPK(657)