

04-24-2020 LETTING ITEM 181

**STATE OF ILLINOIS**  
**DEPARTMENT OF TRANSPORTATION**  
**PLANS FOR PROPOSED**  
**SAFE ROUTES TO SCHOOLS PROJECT**  
**CITY OF BEARDSTOWN**  
**SECTION 19-00079-00-SW**

FOR INDEX OF SHEETS, SEE SHEET NO. 2  
 FOR HIGHWAY STANDARDS, SEE SHEET NO. 2

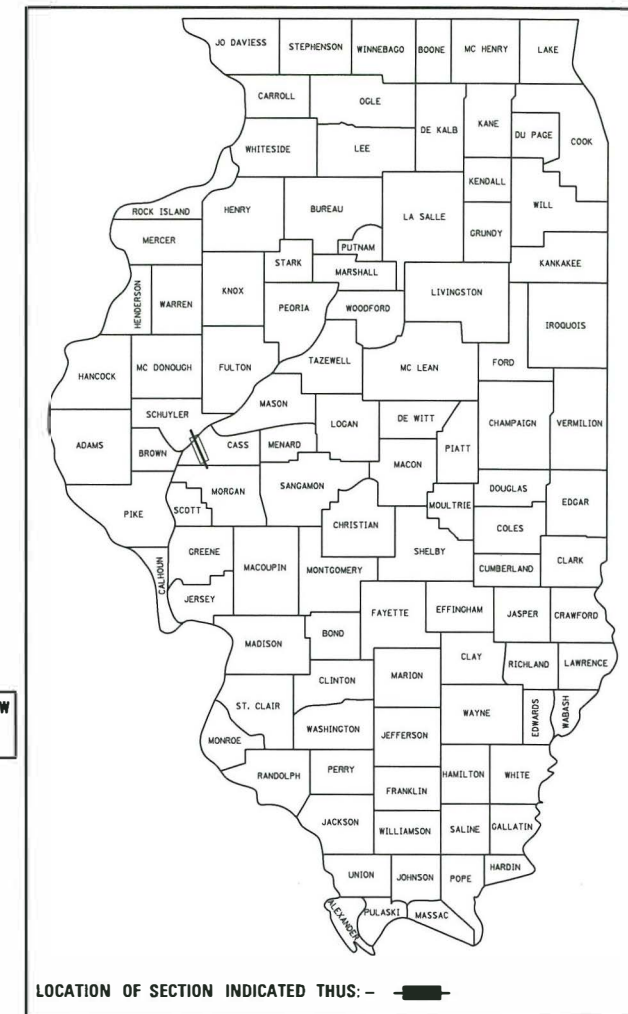
**FAU ROUTE 7778**

**PROJECT NO: KKH(759)**  
 WALL STREET FROM 15th STREET  
 TO 4th STREET

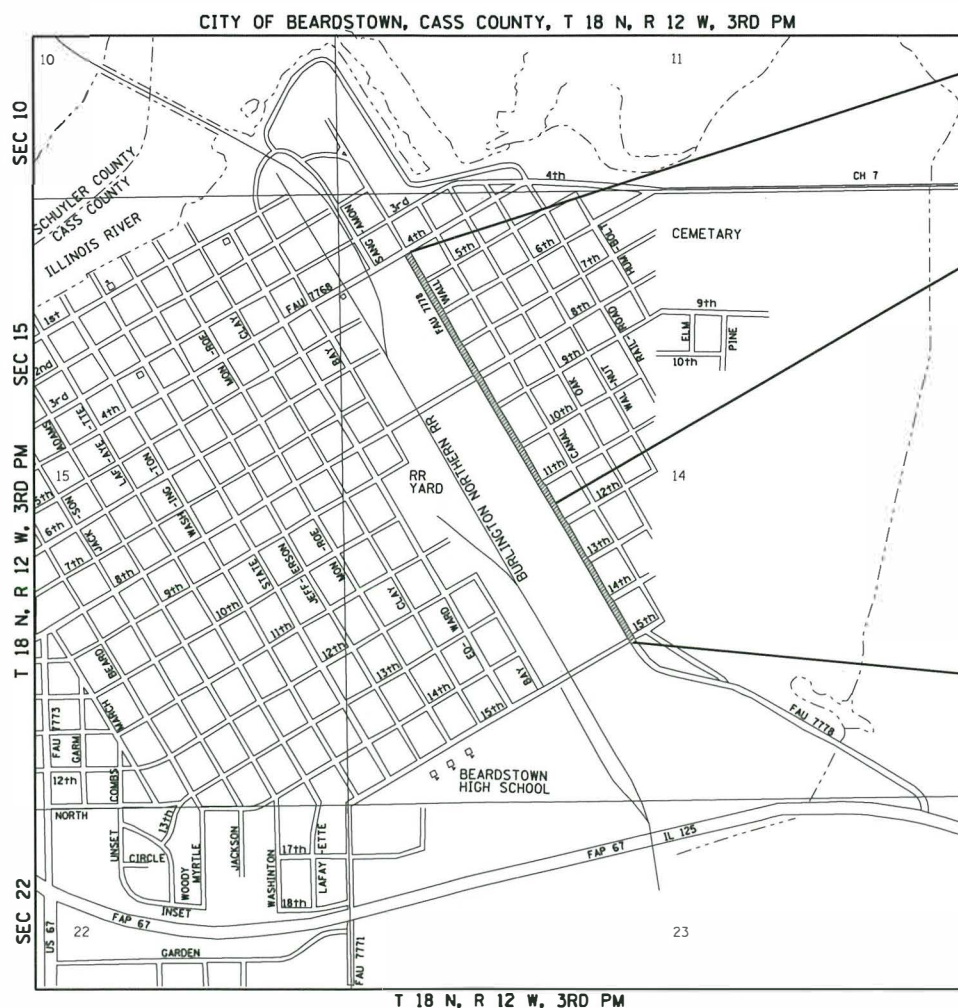
**JOB NO: C-96-015-20**

F.A.U. RTE.	SECTION	COUNTY	TOTAL SHEETS	SHEET NO.
7778	19-00079-00-SW	CASS	11	1

**CONTRACT NO. 93741**



**DESCRIPTION OF WORK**  
 THIS PROJECT CONSISTS OF CONSTRUCTING PORTLAND CEMENT CONCRETE SIDEWALK ADJACENT TO WALL STREET. ALSO INCLUDED IS SIDEWALK REMOVAL, DRIVEWAY PAVEMENT AND REMOVAL, AND OTHER RELATED WORK.



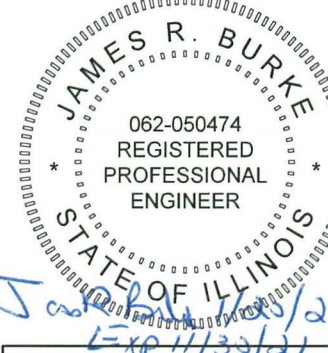
SECTION 19-00079-00-SW ENDS  
 STA 168+94.2

PROJECT LOCATION

SECTION 19-00079-00-SW BEGINS  
 STA 131+20.3



SECTION 19-00079-00-SW BEGINS  
 STA 131+20.3



APPROVED  
*Paul D. Harris* 1-20-2020  
 MAYOR - CITY OF BEARDSTOWN

PASSED *February 7, 2020*  
*Bill Lutz*  
 DISTRICT SIX ENGINEER OF LOCAL ROADS & STREETS

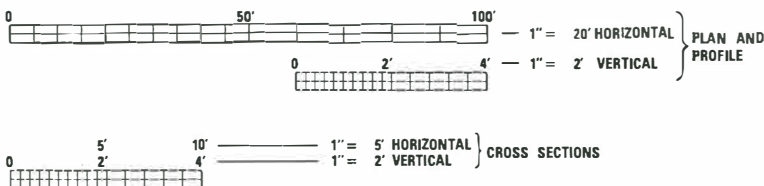
RELEASING FOR BID  
 BASED ON LIMITED REVIEW  
*February 7, 2020*  
*John P. Myer*  
 REGION FOUR ENGINEER

STATE OF ILLINOIS  
 DEPARTMENT OF TRANSPORTATION

**GAS & ELECTRIC**  
 AMEREN CIPS  
 104 EAST 3rd ST ST  
 BEARDSTOWN, ILLINOIS 62618

**COMMUNICATIONS**  
 CASSCOMM  
 1 REDBUD LANE  
 VIRGINIA, IL 62691

**WATER & SEWER**  
 CITY OF BEARDSTOWN  
 CITY HALL  
 105 WEST 3rd ST  
 BEARDSTOWN, ILLINOIS 62618



FULL SIZE PLANS HAVE BEEN PREPARED USING STANDARD ENGINEERING SCALES. REDUCED SIZED PLANS WILL NOT CONFORM TO STANDARD SCALES. IN MAKING MEASUREMENTS ON REDUCED PLANS, THE ABOVE SCALES MAY BE USED.

J.U.L.I.E.  
 JOINT UTILITY LOCATION INFORMATION FOR EXCAVATION  
 1-800-892-0123 OR 811

**DESIGN DESIGNATION**  
 FAU 7778  
 URBAN MINOR ARTERIAL  
 ADT = 4610 (2027)

% PV = 88  
 % SU = 7  
 % MU = 5



TOTAL LENGTH OF PROJECT = 3773.9 FEET = 0.715 MILES  
 NET LENGTH OF PROJECT = 3773.9 FEET = 0.715 MILES

Since 1945  
**Hutchison Engineering, Inc.**  
 JACKSONVILLE • PEORIA • SHOREWOOD • MOLINE  
 Illinois Professional Design Firm No. 64-000825

V:\4398 - Safe Routes to School\Beardstown\CADD\CADD\_Sheets\4398-shr-Cover.dgn

GENERAL NOTES

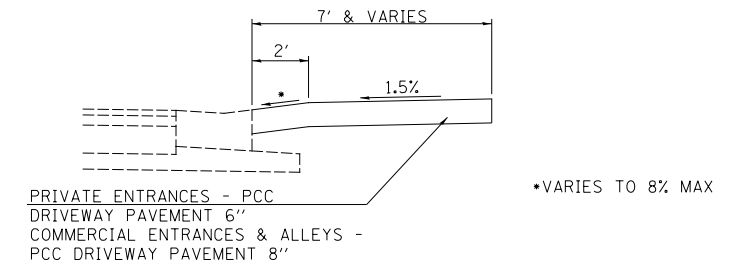
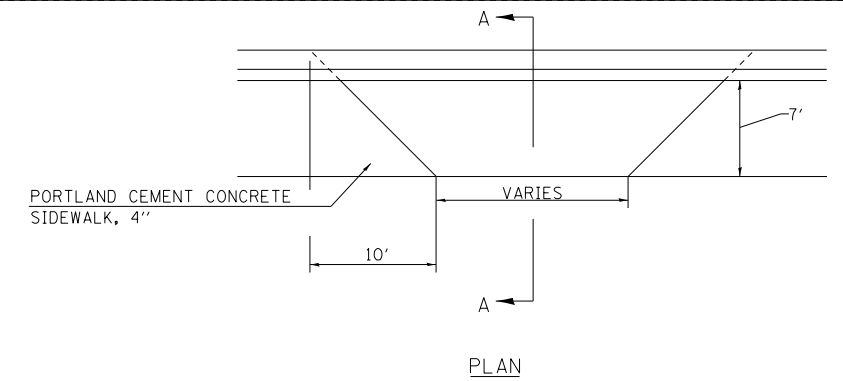
1. THE LOCATION OF ANY UTILITIES SHOWN ON THE PLANS REPRESENTS THE BEST KNOWLEDGE OF THE CITY AND THE INDICATED ADJUSTMENTS OR RECONSTRUCTION ARE CONSIDERED TO BE REASONABLY ACCURATE. IT SHALL BE THE CONTRACTOR'S RESPONSIBILITY TO VERIFY LOCATIONS OF UNDERGROUND INSTALLATIONS BEFORE STARTING CONSTRUCTION OPERATIONS. THE CONTRACTOR SHALL INDEMNIFY THE VILLAGE, ITS OFFICERS, AND EMPLOYEES AGAINST ALL CLAIMS DUE TO DAMAGE TO CORPORATE OR PRIVATE PROPERTY RESULTING FROM HIS CONSTRUCTION OPERATIONS AS DESCRIBED IN ARTICLE 107.20 AND 107.26 OF THE STANDARD SPECIFICATIONS FOR ROAD AND BRIDGE CONSTRUCTION.
2. THE CONTRACTOR MAY BE REQUIRED TO CONDUCT SOME OF HIS MILLING, PAVING, GRADING AND SHOULDER OPERATIONS AROUND TRANSMISSION POLES AND UNDER TRANSMISSION LINES. THE ADDED COST OF SO DOING SHALL BE INCLUDED WITH THE COST OF THE CONTROLLING PAY ITEM FOR THE OPERATION.
3. EXISTING CONCRETE BASES AND OTHER MISCELLANEOUS CONCRETE FROM WORK NOT SPECIFICALLY SHOWN ON THE PLANS, BUT INTERFERING WITH PROPOSED CONSTRUCTION, SHALL BE REMOVED AND VOID FILLED WITH TENCH BACKFILL. ALL COSTS ASSOCIATED WITH THIS WORK SHALL BE INCLUDED IN THE COST OF THE CONTROLLING PAY ITEM FOR THE OPERATION.
4. WHERE SECTION OR SUB-SECTION MONUMENTS ARE ENCOUNTERED, THE ENGINEER SHALL BE NOTIFIED BEFORE SUCH MONUMENTS ARE REMOVED. THE CONTRACTOR SHALL PROTECT AND PRESERVE PROPERTY MARKERS AND MONUMENTS UNTIL THE OWNER, AN AUTHORIZED SURVEYOR OR AGENT HAS WITNESSED OR OTHERWISE REFERENCED THEIR LOCATION.
5. WHEREVER IN THESE PLANS REFERENCE IS MADE TO THE "STANDARD SPECIFICATIONS", IT IS UNDERSTOOD TO INCLUDE THE "SUPPLEMENTAL SPECIFICATIONS" INCLUDED IN THE PROPOSAL.
6. ALL ELEVATIONS SHOWN REFER TO THE U.S.G.S. DATUM AT MEAN SEA LEVEL.
7. THE CONTRACTOR WILL BE REQUIRED TO COMPLY WITH ALL STATE REGULATIONS REGARDING AIR, WATER AND NOISE POLLUTION. THE CONTRACTOR WILL NOT BE ALLOWED TO BUILD FIRES ON THE SITE.
8. IT IS THE CONTRACTOR'S RESPONSIBILITY TO ASCERTAIN EXISTING FIELD CONDITIONS BEFORE BIDDING ON THIS PROJECT, SPECIFICALLY AS THEY RELATE TO THE LUMP SUM PAY ITEMS.
9. THE CONTRACTOR SHALL NOTIFY THE AGENCIES AND UTILITIES AT LEAST 10 (TEN) DAYS PRIOR TO ANY CONSTRUCTION IN THE AREA AND SHALL COMPLY WITH ALL RESTRICTIONS FOR EQUIPMENT MOVEMENTS AND CLEARANCES AS REGARDS TO THEIR FACILITIES.
10. BEFORE STARTING ANY EXCAVATION, THE CONTRACTOR MUST CALL J.U.L.I.E. AT 1-800-892-0123 OR 811 FOR FIELD LOCATIONS OF BURIED ELECTRICAL, TELEPHONE, GAS FACILITIES, AND ALL PUBLIC UTILITIES. A 48 HOUR NOTIFICATION IS REQUIRED.
11. THE CONTRACTOR SHALL USE ALL NECESSARY PRECAUTIONS AND PROTECTIVE MEASURES REQUIRED TO MAINTAIN EXISTING UTILITIES, SEWER AND APPURTENANCES THAT MUST BE KEPT IN OPERATION. IN PARTICULAR, THE CONTRACTOR WILL TAKE ADEQUATE MEASURES TO PREVENT THE UNDERMINING OF UTILITIES AND SEWERS WHICH ARE STILL IN SERVICE.
12. VERIFICATION OF DIMENSIONS : IT IS THE CONTRACTOR'S RESPONSIBILITY TO VERIFY ALL DIMENSIONS AND CONDITIONS EXISTING IN THE FIELD PRIOR TO CONSTRUCTION AND ORDERING MATERIALS.
13. THE CONTRACTOR SHALL BE REQUIRED TO PROVIDE ACCESS TO ABUTTING PROPERTY OWNERS AT ALL TIMES DURING CONSTRUCTION OF THE PROJECT.
14. DURING CONSTRUCTION OPERATIONS, IF ANY LOOSE MATERIAL IS DEPOSITED IN THE FLOW LINE OF DITCHES, GUTTERS OR DRAINAGE STRUCTURES SO THAT THE NATURAL FLOW OF WATER IS OBSTRUCTED, IT SHALL BE REMOVED AT THE CLOSE OF EACH WORKING DAY. AT THE CONCLUSION OF CONSTRUCTION OPERATIONS, ALL DRAINAGE STRUCTURES SO AFFECTED SHALL BE FREE FROM ALL DEBRIS. THIS WORK SHALL BE CONSIDERED INCLUDED IN THE COST OF THE CONTRACT.
15. ALL FRAMES, GRATES, SIGNS, FENCES AND DELINEATORS, DRIVEWAY PAVEMENT, CURB AND GUTTER, NEW OR EXISTING, DAMAGED THROUGH CONTRACTOR'S NEGLIGENCE DURING CONSTRUCTION SHALL BE REPLACED BY THE CONTRACTOR AT HIS EXPENSE.
16. THE COST OF ADDITIONAL LABOR AND MATERIALS NOT ACCOUNTED FOR ON THE PLANS, WHICH MIGHT BE INVOLVED IN MAINTAINING THE FLOW OF STORM WATER TO EXISTING DRAINAGE STRUCTURES, SHALL BE INCLUDED IN THE COST OF THE CONTROLLING PAY ITEM FOR THE OPERATION.
17. TRAFFIC SIGNS REMOVED MUST BE RESET AT THEIR PERMANENT LOCATIONS IN A WORKMANLIKE MANNER AND VISIBLE TO TRAFFIC ON THE ROADWAY AS DIRECTED BY THE ENGINEER. THESE SIGNS SHALL BE RESET BEFORE THE ROADWAY IS OPEN TO TRAFFIC. COST OF SUCH WORK SHALL BE CONSIDERED INCLUDED IN THE COST OF THE CONTRACT.

INDEX OF SHEETS

- 1 COVER SHEET
- 2 GENERAL NOTES, INDEX OF SHEETS & REQUIRED STANDARDS
- 3 SUMMARY OF QUANTITIES
- 4 PROPOSED TYPICAL SECTION
- 5-6 SCHEDULES OF QUANTITIES
- 7-11 PLAN SHEETS

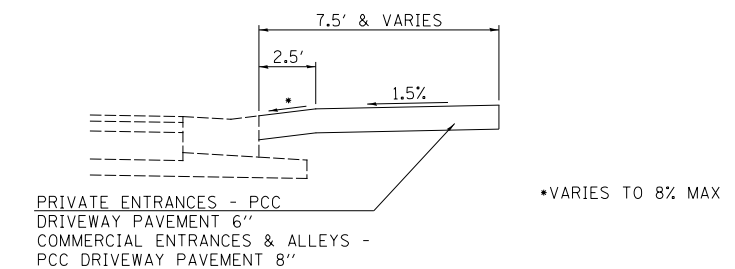
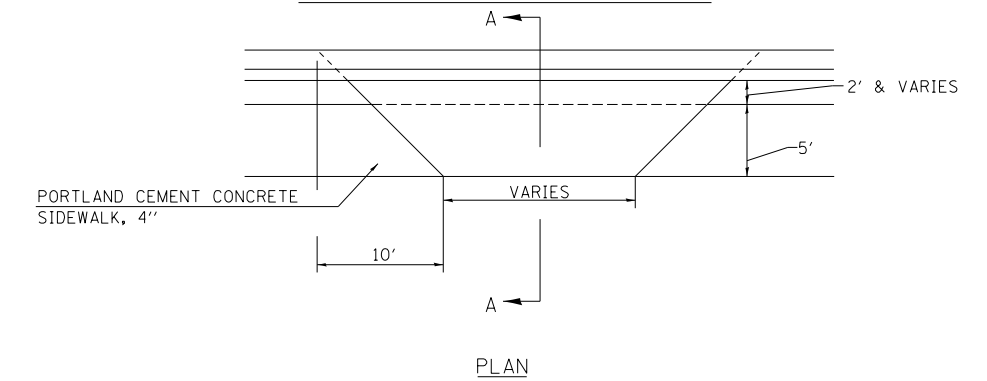
STANDARDS

- 000001-07 STANDARD SYMBOLS, ABBREVIATIONS AND PATTERNS
- 424011-04 CORNER PARALLEL CURB RAMPS FOR SIDEWALKS
- 424021-05 DEPRESSED CORNER FOR SIDEWALKS
- 606001-07 CONCRETE CURB TYPE B AND COMBINATION CONCRETE CURB AND GUTTER
- 701101-05 OFF-RD OPERATIONS, MULTILANE, 15' TO 24" FROM PAVEMENT EDGE
- 701301-04 LANE CLOSURE, 2L, 2W, SHORT TIME OPERATIONS
- 701501-06 URBAN LANE CLOSURE, 2L, 2W, UNDIVIDED
- 701801-06 SIDEWALK, CORNER OR CROSSWALK CLOSURE
- 701901-08 TRAFFIC CONTROL DEVICES
- 780001-05 TYPICAL PAVEMENT MARKINGS



SECTION A-A

PROPOSED ENTRANCE DETAIL A



SECTION A-A

PROPOSED ENTRANCE DETAIL B

NOTES FOR ENTRANCES

1. SIDEWALK THROUGH ENTRANCES TO MATCH DRIVEWAY PAVEMENT THICKNESS, BUT SHALL BE FORMED SEPARATELY, FINISHED AND PAID FOR PER SQUARE FOOT AS PORTLAND CEMENT CONCRETE SIDEWALK, 4' AS SPECIFIED IN SECTION 424 OF THE STANDARD SPECIFICATIONS.

FILE NAME =	USER NAME = BBorgman	DESIGNED - JRB	REVISED -
V:\4398 - Safe Routes to School (Beardstown)\CADD\CADD Sheets\4398-sht-GenNotes.dgn		DRAWN - JMO	REVISED -
	PLOT SCALE = 4.0000' / in.	CHECKED - JRB	REVISED -
	PLOT DATE = 1/20/2020	DATE -	REVISED -

STATE OF ILLINOIS  
DEPARTMENT OF TRANSPORTATION

CITY OF BEARDSTOWN, ILLINOIS  
WALL STREET - FAU ROUTE 7778  
GENERAL NOTES

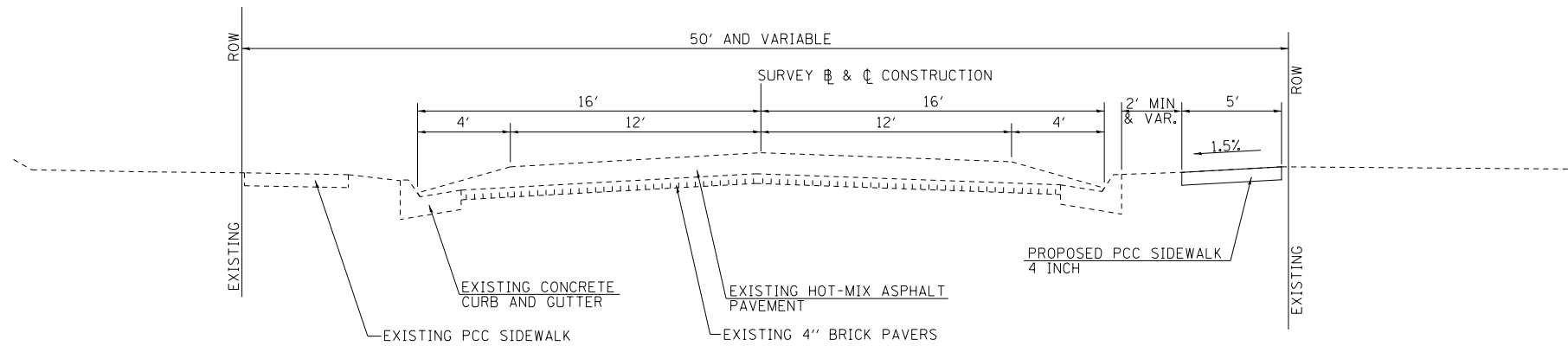
SCALE: N/A SHEET NO. 1 OF 1 SHEETS STA. N/A TO STA. N/A

F.A.U. RTE.	SECTION	COUNTY	TOTAL SHEETS	SHEET NO.
7778	19-00079-00-SW	CASS	11	2
			CONTRACT NO. 93741	
ILLINOIS FED. AID PROJECT				

CODE NO.	ITEM	UNIT	TOTAL QUANTITY	CONSTR. CODE
				ROADWAY 0021 URBAN
42300200	PORTLAND CEMENT CONCRETE DRIVEWAY PAVEMENT, 6 INCH	SQ YD	86	86
42300400	PORTLAND CEMENT CONCRETE DRIVEWAY PAVEMENT, 8 INCH	SQ YD	69	69
* 42400100	PORTLAND CEMENT CONCRETE SIDEWALK 4 INCH	SQ FT	13857	13857
42400800	DETECTABLE WARNINGS	SQ FT	16	16
44000200	DRIVEWAY PAVEMENT REMOVAL	SQ YD	338	338
44000500	COMBINATION CURB AND GUTTER REMOVAL	FOOT	35	35
* 44000600	SIDEWALK REMOVAL	SQ FT	11775	11775
* 60604500	COMBINATION CONCRETE CURB AND GUTTER, TYPE B-6.18 (ABUTTING EXISTING PAVEMENT)	FOOT	35	35
67100100	MOBILIZATION	L SUM	1	1
* X4240440	PORTLAND CEMENT CONCRETE SIDEWALK 6 INCH, SPECIAL	SQ FT	2867	2867
* X7010216	TRAFFIC CONTROL AND PROTECTION, (SPECIAL)	L SUM	1	1

\* SEE SPECIAL PROVISIONS

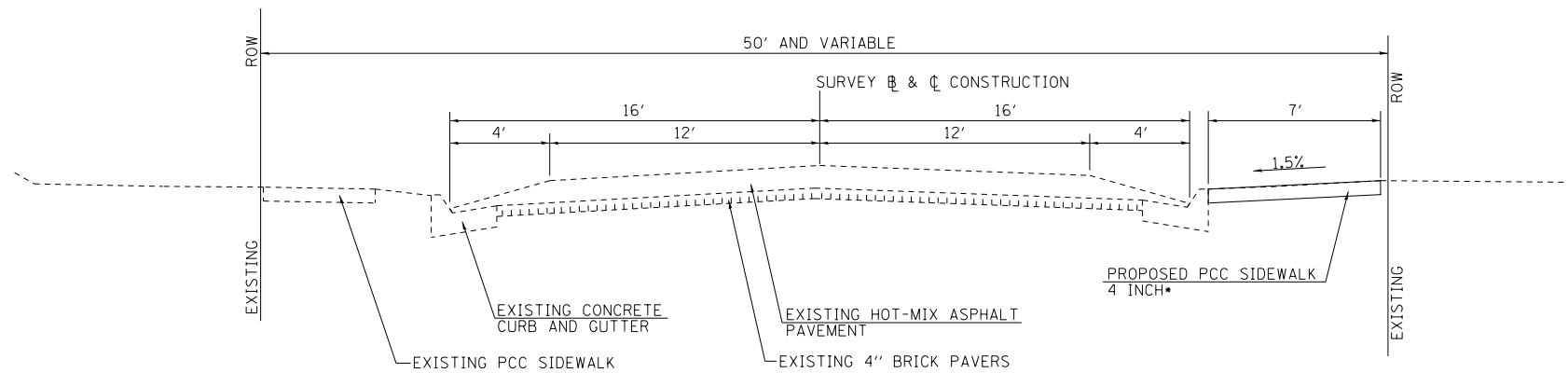
FILE NAME =	USER NAME = 8Bargman	DESIGNED - JRB	REVISED -	<b>STATE OF ILLINOIS DEPARTMENT OF TRANSPORTATION</b>	<b>WALL ST (FAU RTE 7778) SUMMARY OF QUANTITIES</b>		F.A.U. RTE.	SECTION	COUNTY	TOTAL SHEETS	SHEET NO.
V:\4398 - Safe Routes to School (Beardstun)\CADD\CADD Sheets\4398-sht-S0081.dgn	DRAWN - TJD	REVISED -	7778				19-00079-00-SW	CASS	11	3	
PLOT SCALE = 100.0000' / 1".	CHECKED - JRB	REVISED -	CONTRACT NO. 93741								
\$MODELNAME\$	PLOT DATE = 1/20/2020	DATE -	REVISED -		SCALE: N/A	SHEET OF SHEETS	STA. TO STA.	ILLINOIS FED. AID PROJECT			



**WALL STREET SIDEWALK PROPOSED TYPICAL SECTION**

STA 131+20.3 TO STA 145+70.0  
 STA 150+25.0 TO STA 153+34.5  
 STA 158+34.5 TO STA 168+94.2

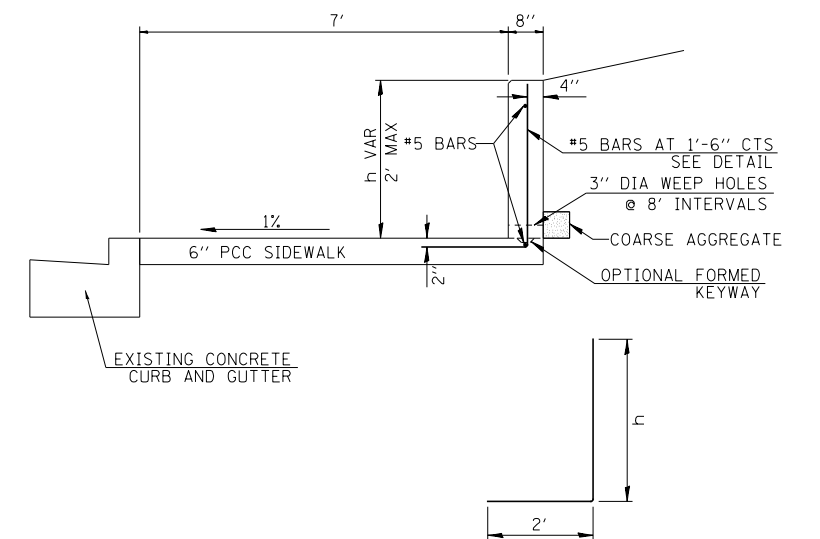
•PROPOSED CURB ADJACENT TO SIDEWALK  
 STA 138+85.7 TO 141+96.4  
 STA 142+60.8 TO 145+70.0



**WALL STREET SIDEWALK PROPOSED TYPICAL SECTION**

STA 146+38.6 TO STA 149+57.1  
 STA 154+00.3 TO STA 156+33.3

•PROPOSED PCC SIDEWALK, 6 INCH, SPECIAL  
 STA 146+38.6 TO 149+57.1 (SEE DETAIL)  
 •PROPOSED CURB ADJACENT TO SIDEWALK  
 STA 154+51.3 TO 154+92.5  
 STA 155+81.3 TO 156+33.3



BENT BAR DETAIL

PCC SIDEWALK, 6", SPECIAL DETAIL

FILE NAME =	USER NAME = BBorgman	DESIGNED - JRB	REVISED -	<b>STATE OF ILLINOIS DEPARTMENT OF TRANSPORTATION</b>	<b>WALL ST (FAU RTE 7778) PROPOSED TYPICAL SECTIONS</b>			F.A.U. RTE.	SECTION	COUNTY	TOTAL SHEETS	SHEET NO.
V:\4398 - Safe Routes to School (Beardstown)\CADD\CADD Sheets\4398-sht-typicals.dgn	DRAWN - TJD	REVISED -	7778					19-00079-00-SW	CASS	11	4	
\$MODELNAME\$	PLOT SCALE = 10.0000' / in.	CHECKED - JRB	REVISED -		SCALE: NONE	SHEET OF SHEETS	STA. TO STA.	ILLINOIS FED. AID PROJECT		CONTRACT NO. 93741		
	PLOT DATE = 1/20/2020	DATE -	REVISED -									

**SIDEWALK, DRIVEWAY PAVEMENT, AND CURB & GUTTER SCHEDULE**

STREET TO STREET	STATION TO STATION	42300200	42300400	42400100		60604500	X4240440	42400800	
		PORTLAND CEMENT CONCRETE DRIVEWAY PAVEMENT, 6 INCH	PORTLAND CEMENT CONCRETE DRIVEWAY PAVEMENT, 8 INCH	SIDEWALK		COMBINATION CONCRETE CURB AND GUTTER, TYPE B-6.18 (ABUTTING EXISTING PAVEMENT)	PORTLAND CEMENT CONCRETE SIDEWALK, 6 INCH, SPECIAL	DETECTABLE WARNINGS	
				PORTLAND CEMENT CONCRETE SIDEWALK, 4 INCH	ENTRANCES				
					PRIVATE (6" THICK)				COMMERCIAL (8" THICK)
SQ YD	SQ FT	FT	SQ FT						
15TH	14TH	131+20.3   132+17.4		485.4					
		132+25.9	8.3		85.0				
		132+34.4   132+91.0		282.8					
		133+03.5	11.0		125.0				
		133+16.0   133+55.9		199.8					
		133+88.4	20.2			362.9			
		134+22.0   134+29.5		37.1					
14TH	13TH	135+05.4   135+50.4		222.6					
		135+58.9	5.1		85.0				
		135+67.4   136+05.6		190.8					
		136+14.1	5.1		85.0				
		136+22.6   137+07.4		424.2					
		137+15.9	5.1		85.0				
		137+24.4   138+04.3		399.2					
13TH	12TH	138+91.7   139+70.6		394.4					
		139+80.2	5.1		85.0				
		139+87.6   141+90.4		1014.0					
12TH	11TH	142+66.8   143+50.7		424.2					
		143+60.1	5.1		85.0				
		143+69.6   144+10.3		208.2					
		144+18.8	5.1		85.0				
		144+27.7   145+23.6		481.9					
		145+32.1	5.1		85.0				
		145+40.6   145+70.0		146.8					
11TH	10TH	146+38.6   149+57.1					2867.0		
		150+25.0   150+71.3		231.8					
10TH	9TH	150+85.8	7.6		145.0				
		151+00.3   151+65.2		324.3					
		151+79.7	7.6		145.0				
		151+94.2   153+34.5		701.6					
9TH	8TH	154+00.3   154+03.8		23.9					
		154+29.3				352.9			
		154+54.8   156+33.3		1234.7					
8TH	7TH	158+34.5	7.6						
		158+54.0   159+45.0		455.1			195.0		
7TH	6TH	160+18.7   160+23.1		22.1					
		160+40.6	8.3			175.8			
		160+58.1   160+78.2		100.1					
		160+95.9	8.3			175.8			
		161+15.1   161+22.6		45.6					
		161+31.1	5.1			85.0			
		161+39.6   161+51.9		61.7					
		161+66.4	7.6		145.0				
		161+80.9   162+60.9		399.8					
6TH	5TH	163+25.8   164+42.0		581.0					
		164+50.5	7.9		85.0				
		164+59.0   165+67.5		542.3					
5TH	4TH	166+39.1   167+46.7		538.4					
		167+59.0				125.0			
		167+71.7   168+09.9		366.6					
		168+34.4	12.2			245.0			
		168+58.9   168+94.2		274.2					
<b>TOTALS</b>		<b>85.7</b>	<b>68.7</b>	<b>10814.6</b>	<b>1325.0</b>	<b>1717.4</b>	<b>34.6</b>	<b>15.7</b>	
<b>USE</b>		<b>86</b>	<b>69</b>	<b>13857</b>		<b>35</b>	<b>2867</b>	<b>16</b>	

FILE NAME =	USER NAME = BBorgman	DESIGNED - JRB	REVISED -
V:\4398 - Safe Routes to School (Beardstown)\CADD\CADD Sheets\4398-shr-SCHEDULES01.dwg	DRAWN - TJD	CHECKED - JRB	REVISED -
\$MODELNAME\$	PLOT SCALE = 100.0000' / 1"	DATE -	REVISED -

**STATE OF ILLINOIS  
DEPARTMENT OF TRANSPORTATION**

**WALL ST (FAU RTE 7778)  
SCHEDULES OF QUANTITIES**

SCALE: N/A SHEET OF SHEETS STA. TO STA.

F.A.U. RTE.	SECTION	COUNTY	TOTAL SHEETS	SHEET NO.
7778	19-00079-00-SW	CASS	11	5
CONTRACT NO. 93741			ILLINOIS FED. AID PROJECT	

**REMOVAL SCHEDULE**

STREET TO STREET		STATION TO STATION		SIDE	44000200	44000500	44000600
					DRIVEWAY PAVEMENT REMOVAL	COMBINATION CURB AND GUTTER REMOVAL	SIDEWALK REMOVAL
					SQ YD	FOOT	SQ FT
15TH	14TH	131+20.3	134+29.5	RT	102.3		1236.8
14TH	13TH	135+05.4	138+04.3	RT	35.6		1195.6
13TH	12TH	138+91.7	141+90.4	RT	7.7		1194.8
12TH	11TH	142+66.8	145+70.0	RT	32.8		1212.8
11TH	10TH	146+38.6	149+57.1	RT			1274.0
10TH	9TH	150+25.0	153+34.5	RT	18.1		1238.0
9TH	8TH	154+00.3	156+33.3	RT	22.6		932.0
8TH	7TH	158+17.6	159+45.0	RT	25.8		509.6
7TH	6TH	160+18.7	162+60.9	RT	26.5		968.8
6TH	5TH	163+25.8	165+67.5	RT	7.3		966.8
5TH	4TH	166+39.1	168+94.2	RT	59.3	34.6	1045.7
TOTAL					338.0	34.6	11774.9
<b>USE</b>					<b>338</b>	<b>35</b>	<b>11775</b>



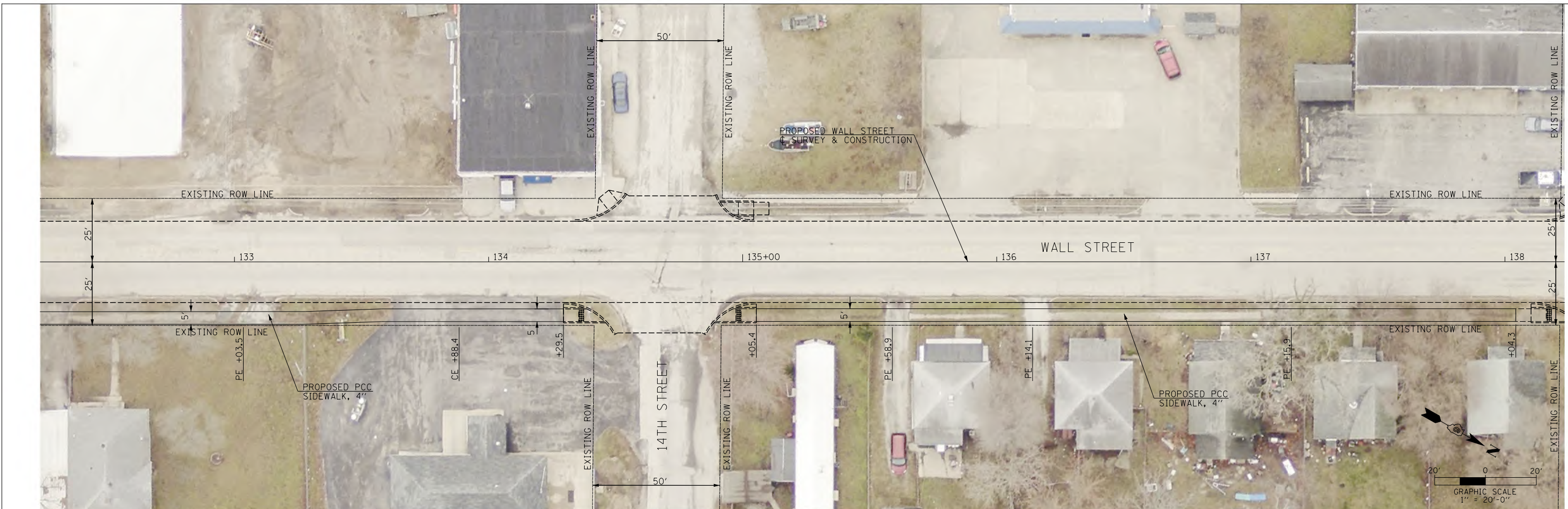
FILE NAME =	USER NAME = BBorgman	DESIGNED - JRB	REVISED -
V:\4398 - Safe Routes to School (Beardstown)\CADD\CADD Sheets\4398-sht-WallPlan01.dgn		DRAWN - TJD	REVISED -
\$MODELNAME\$	PLOT SCALE = 40.0000' / in.	CHECKED - JRB	REVISED -
	PLOT DATE = 1/20/2020	DATE -	REVISED -

**STATE OF ILLINOIS  
DEPARTMENT OF TRANSPORTATION**

**WALL ST (FAU 7778)  
PLAN VIEWS**

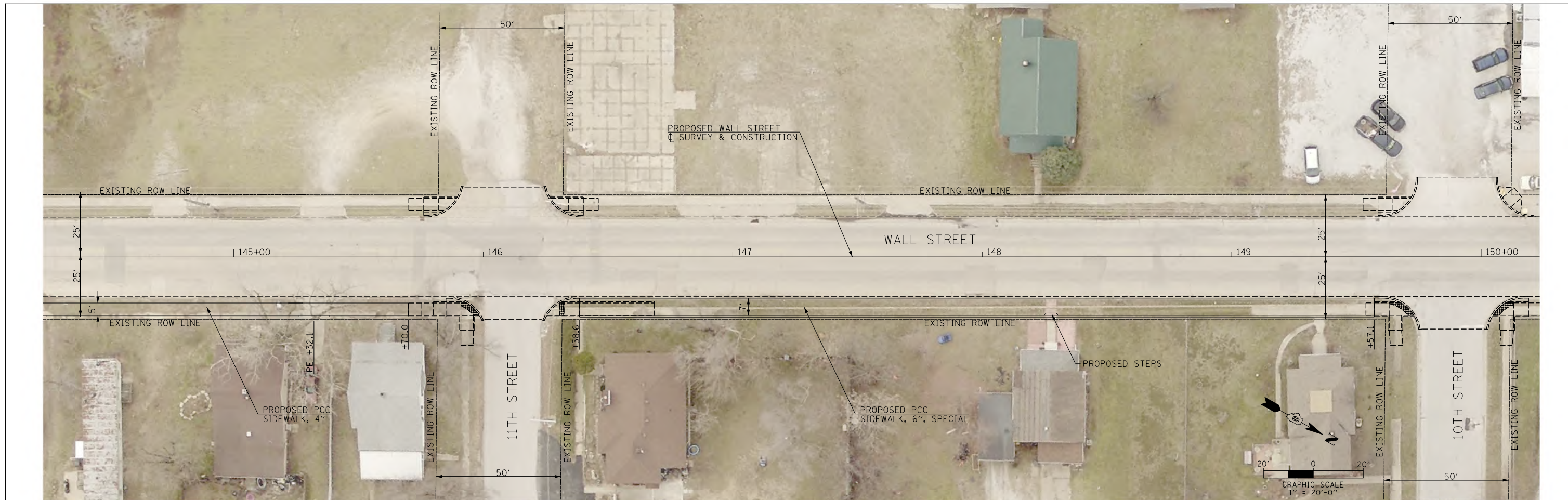
SCALE: 1"=20'      SHEET 1 OF 5 SHEETS      STA. 120+00 TO STA. 132+25

F.A.U. RTE.	SECTION	COUNTY	TOTAL SHEETS	SHEET NO.
7778	19-00079-00-SW	CASS	11	7
CONTRACT NO. 93741			ILLINOIS FED. AID PROJECT	



FILE NAME = V:\4398 - Safe Routes to School (Beardstown)\CADD\CADD Sheets\4398-sht-WallPlan02.dgn	USER NAME = BBorgman	DESIGNED - JRB	REVISED -	<b>STATE OF ILLINOIS DEPARTMENT OF TRANSPORTATION</b>	<b>WALL ST (FAU 7778) PLAN VIEWS</b>			F.A.U. RTE. = 7778	SECTION = 19-00079-00-SW	COUNTY = CASS	TOTAL SHEETS = 11	SHEET NO. = 8	
\$MODELNAME\$	PLOT SCALE = 40.0000' / in.	CHECKED - JRB	REVISED -		SCALE: 1"=20'	SHEET 2 OF 5 SHEETS	STA. 132+25 TO STA. 144+25	CONTRACT NO. 93741		ILLINOIS FED. AID PROJECT			
	PLOT DATE = 1/20/2020	DATE -	REVISED -										





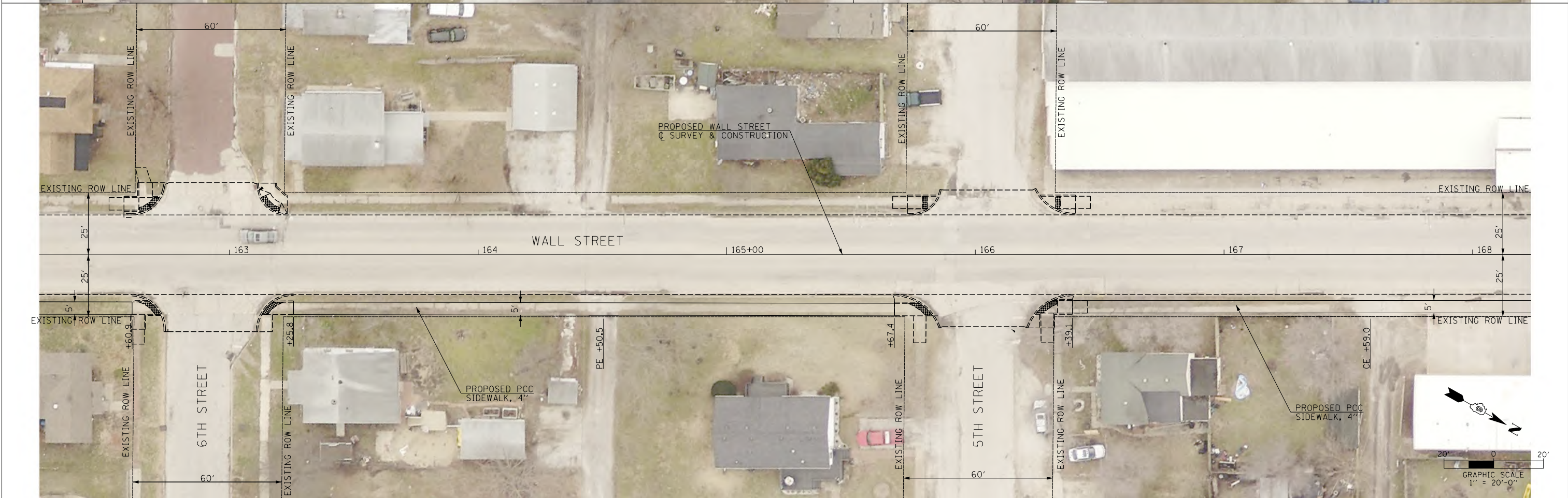
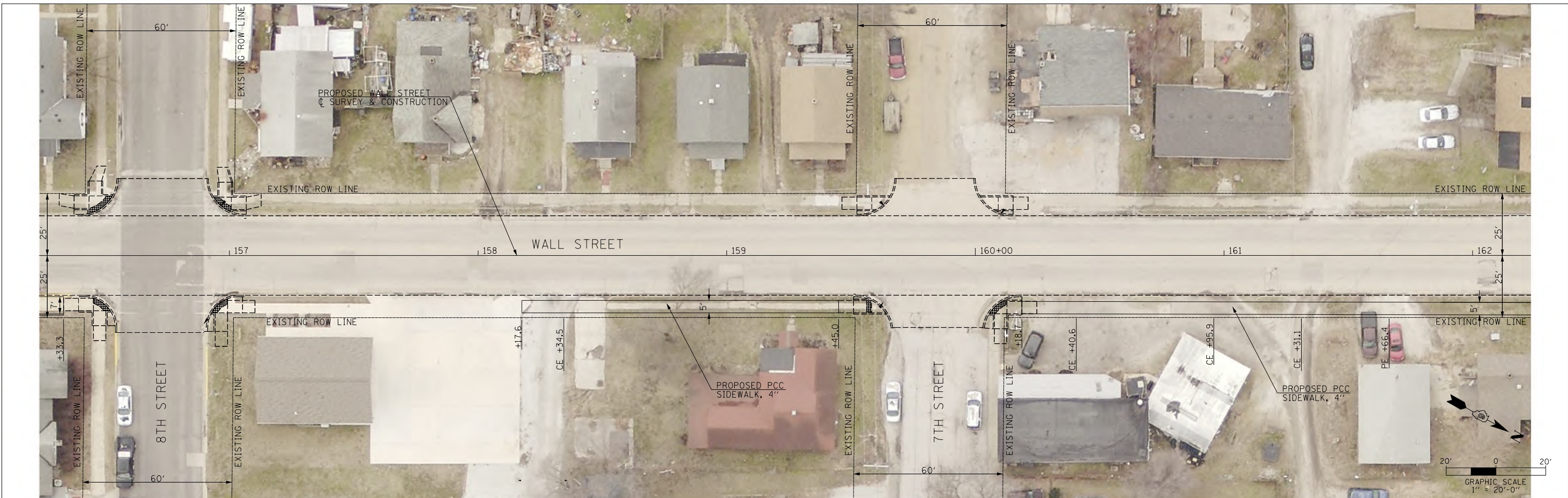
FILE NAME =	USER NAME = BBorgman	DESIGNED - JRB	REVISED -
V:\4398 - Safe Routes to School (Beardstown)\CADD\CADD Sheets\4398-sht-WallPlan03.dgn		DRAWN - TJD	REVISED -
\$MODELNAME\$	PLOT SCALE = 40.0000' / in.	CHECKED - JRB	REVISED -
	PLOT DATE = 1/20/2020	DATE -	REVISED -

**STATE OF ILLINOIS  
DEPARTMENT OF TRANSPORTATION**

**WALL ST (FAU 778)  
PLAN VIEWS**

SCALE: 1"=20'    SHEET 3 OF 5 SHEETS    STA. 144+25 TO STA. 156+25

F.A.U. RTE.	SECTION	COUNTY	TOTAL SHEETS	SHEET NO.
7778	19-00079-00-SW	CASS	11	9
CONTRACT NO.			93741	
ILLINOIS FED. AID PROJECT				



FILE NAME =	USER NAME = BBorgman	DESIGNED - JRB	REVISED -
V:\4398 - Safe Routes to School (Beardstown)\CADD\CADD Sheets\4398-sht-WallPlan04.dgn		DRAWN - TJD	REVISED -
\$MODELNAME\$	PLOT SCALE = 40.0000' / in.	CHECKED - JRB	REVISED -
	PLOT DATE = 1/20/2020	DATE -	REVISED -

**STATE OF ILLINOIS  
DEPARTMENT OF TRANSPORTATION**

**WALL ST (FAU 7778)  
PLAN VIEWS**

SCALE: 1"=20'    SHEET 4 OF 5 SHEETS    STA. 156+25 TO STA. 168+25

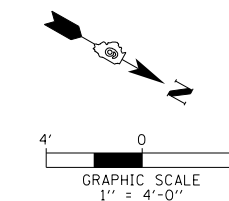
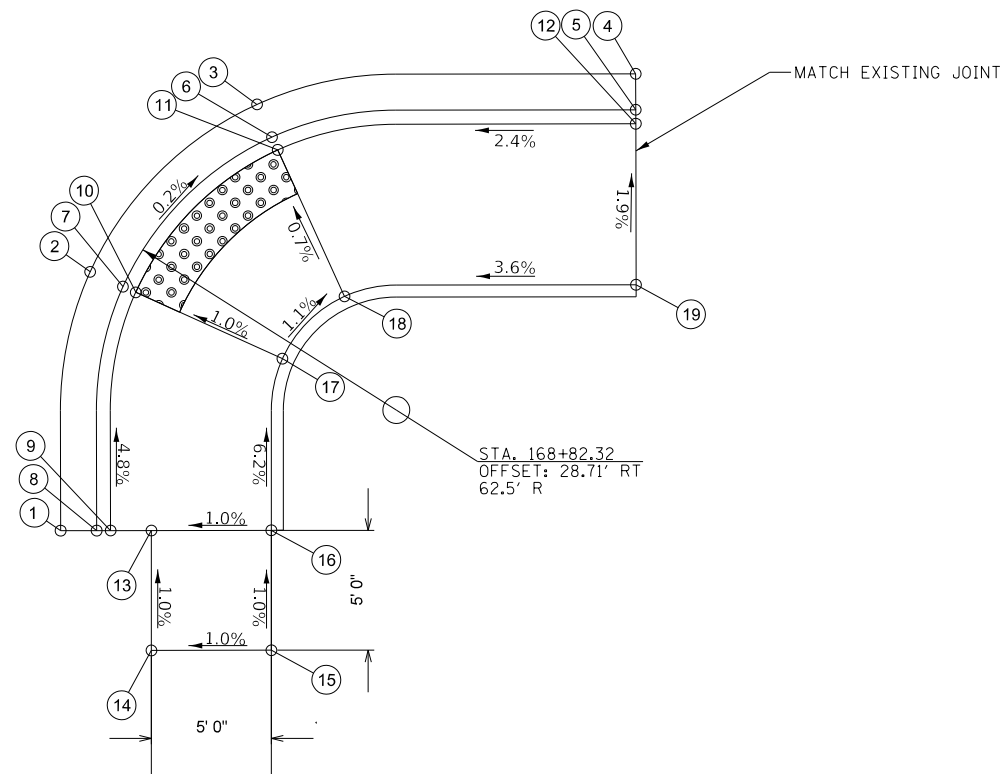
F.A.U. RTE.	SECTION	COUNTY	TOTAL SHEETS	SHEET NO.
7778	19-00079-00-SW	CASS	11	10
CONTRACT NO. 93741			ILLINOIS FED. AID PROJECT	



**S.E. QUADRANT  
WALL ST. & 4TH AVE.**

LOCATION	STATION	OFFSET	ELEVATION
1	168+77.29	14.71' RT	815.47 *
2	168+88.08	15.95' RT	815.23 *
3	168+95.06	22.90' RT	815.21 *
4	168+96.33	38.69' RT	815.23 *
5	168+94.83	38.69' RT	815.12 *
6	168+93.69	23.53' RT	815.14 *
7	168+87.46	17.32' RT	815.16 *
8	168+77.29	16.22' RT	815.18 *
9	168+77.30	16.80' RT	815.68 *
10	168+87.22	17.85' RT	815.2 *
11	168+93.17	23.77' RT	815.18 *
12	168+94.25	38.69' RT	815.54 *
13	168+77.30	18.50' RT	815.7 *
14	168+72.30	18.50' RT	815.75 *
15	168+72.31	23.50' RT	815.8 *
16	168+77.31	23.50' RT	815.75 *
17	168+84.47	23.96' RT	815.27 *
18	168+87.06	26.54' RT	815.23 *
19	168+87.54	38.70' RT	815.67 *

\*MATCH EXISTING GRADE



FILE NAME =	USER NAME = BBorgman	DESIGNED - JRB	REVISED -
V:\4398 - Safe Routes to School (Beardstown)\CADD\CADD Sheets\4398-sht-WallPlan05.dgn		DRAWN - TJD	REVISED -
\$MODELNAME\$	PLOT SCALE = 40.0000' / in.	CHECKED - JRB	REVISED -
	PLOT DATE = 1/20/2020	DATE -	REVISED -

**STATE OF ILLINOIS  
DEPARTMENT OF TRANSPORTATION**

**WALL ST (FAU 7778)  
PLAN VIEWS**

SCALE: 1"=20' SHEET 5 OF 5 SHEETS STA. 168+25 TO STA. 170+00

F.A.U. RTE.	SECTION	COUNTY	TOTAL SHEETS	SHEET NO.
7778	19-00079-00-SW	CASS	11	11
			CONTRACT NO.	93741
ILLINOIS FED. AID PROJECT				