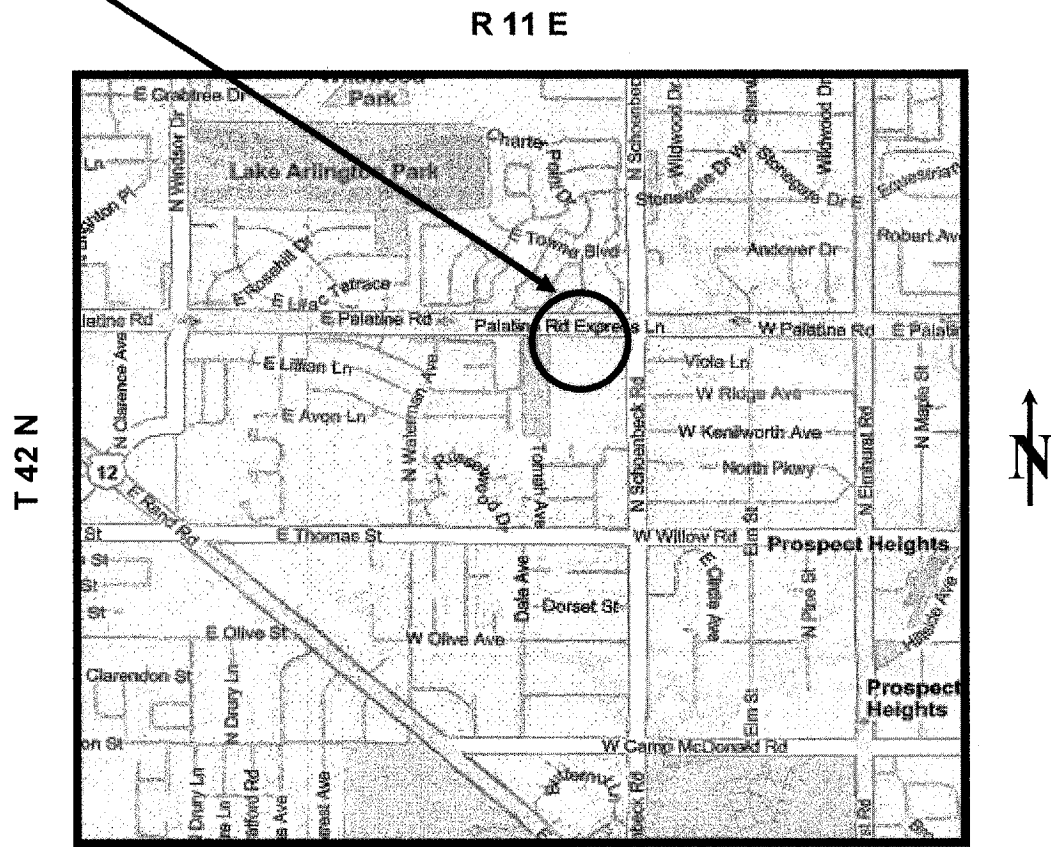


ROUTE	SECTION	COUNTY	TOTAL SHEETS	SHEET NUMBER
VARIOUS	2007-009 GR	VARIOUS	27	8

Contract 60C34

IMPROVEMENT IS LOCATED IN THE CITY OF PROSPECT HEIGHTS

**LOCATION 5 : PALATINE ROAD EASTBOUND
(ATTACHED TO SIGN TRUSS FOR SCHOENBECK RD)**



**WHEELING TOWNSHIP
COOK COUNTY**

TRAFFIC DATA:
 PALATINE ROAD: SPEED LIMIT = 45 MPH
 2006 ADT = 24,900

ILLINOIS DEPARTMENT OF TRANSPORTATION

**LOCATION MAPS
LOCATION: 5**