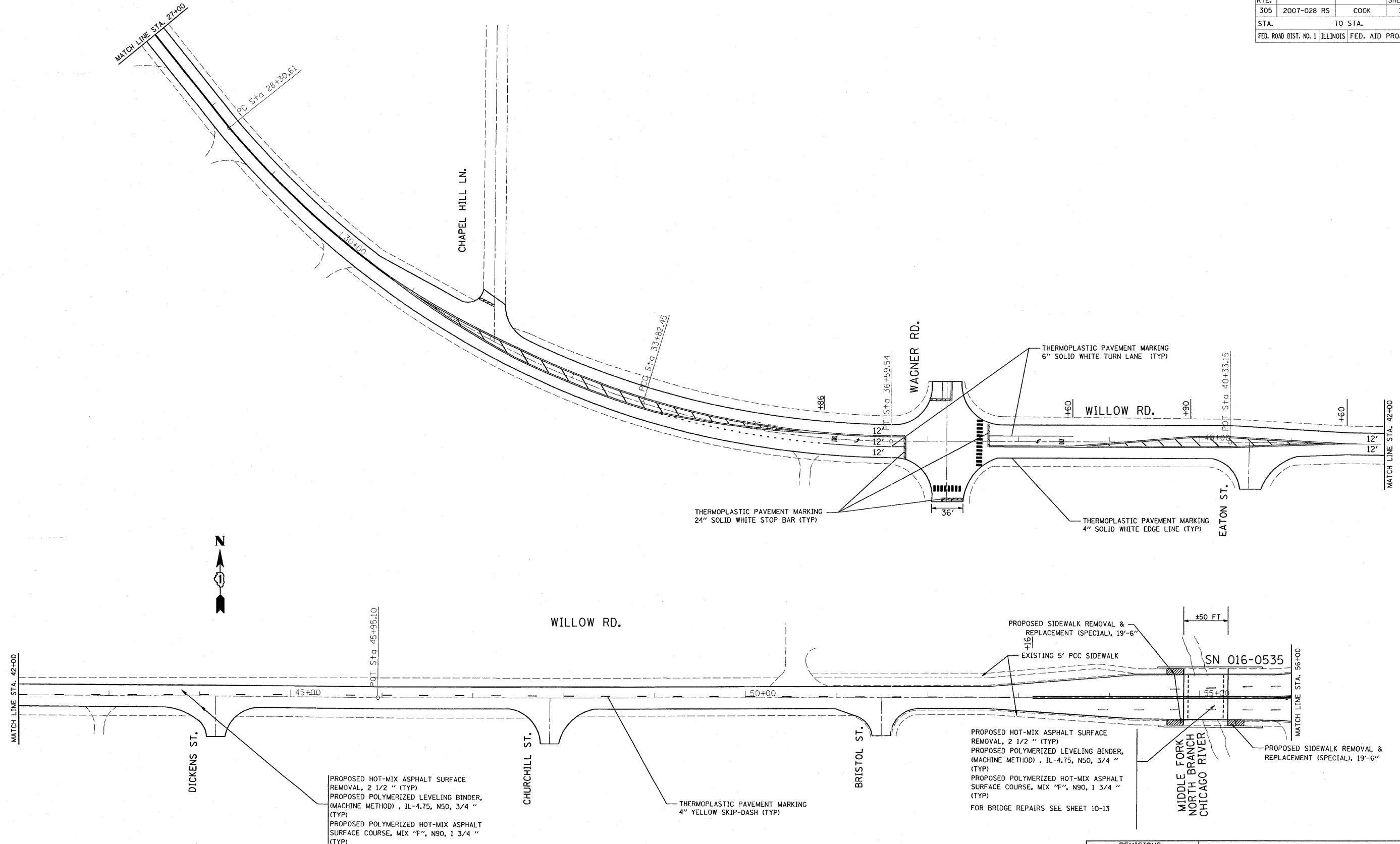


F.A.P. RTE.	SECTION	COUNTY	TOTAL SHEETS	SHEET NO.
305	2007-028 RS	COOK	35	8
STA.		TO STA.		
FED. ROAD DIST. NO. 1		ILLINOIS FED. AID PROJECT		



PROPOSED HOT-MIX ASPHALT SURFACE REMOVAL, 2 1/2 " (TYP)
 PROPOSED POLYMERIZED LEVELING BINDER, (MACHINE METHOD) , IL-4.75, N50, 3/4 " (TYP)
 PROPOSED POLYMERIZED HOT-MIX ASPHALT SURFACE COURSE, MIX "F", N90, 1 3/4 " (TYP)

PROPOSED HOT-MIX ASPHALT SURFACE REMOVAL, 2 1/2 " (TYP)
 PROPOSED POLYMERIZED LEVELING BINDER, (MACHINE METHOD) , IL-4.75, N50, 3/4 " (TYP)
 PROPOSED POLYMERIZED HOT-MIX ASPHALT SURFACE COURSE, MIX "F", N90, 1 3/4 " (TYP)
 FOR BRIDGE REPAIRS SEE SHEET 10-13

REVISIONS	
NAME	DATE

ILLINOIS DEPARTMENT OF TRANSPORTATION
ROADWAY PLAN
WILLOW RD.
 W/O SUNSET RIDGE RD. TO I-94
 SCALE: VERT. DRAWN BY
 DATE HORIZ. CHECKED BY

PLOT DATE = 2/11/2008
 FILE NAME = c:\p\projects\121207\wil_rch.dgn
 PLOT SCALE = 50.0000 / IN.
 USER NAME = gulltaumefp