

60D44

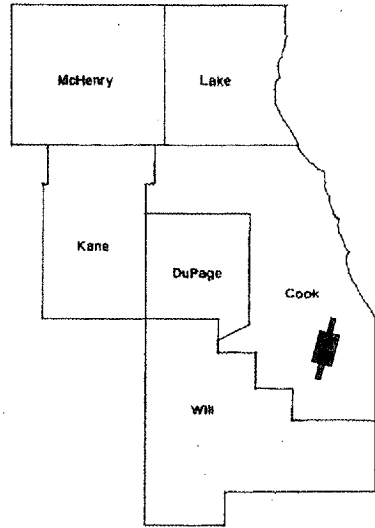
ROUTE	SECTION	COUNTY	TOTAL SHEETS	SHEET NUMBER
FAU 3578	15VB-1BR-1	COOK	5	1

FOR INDEX OF SHEETS SEE SHEET 2

IMPROVEMENT IS LOCATED
IN THE VILLAGE OF
CHICAGO RIDGE.

STATE OF ILLINOIS
DEPARTMENT OF TRANSPORTATION
DIVISION OF HIGHWAYS
DISTRICT ONE
PROPOSED HIGHWAY PLANS

CONTRACT NO
D-91-023-08



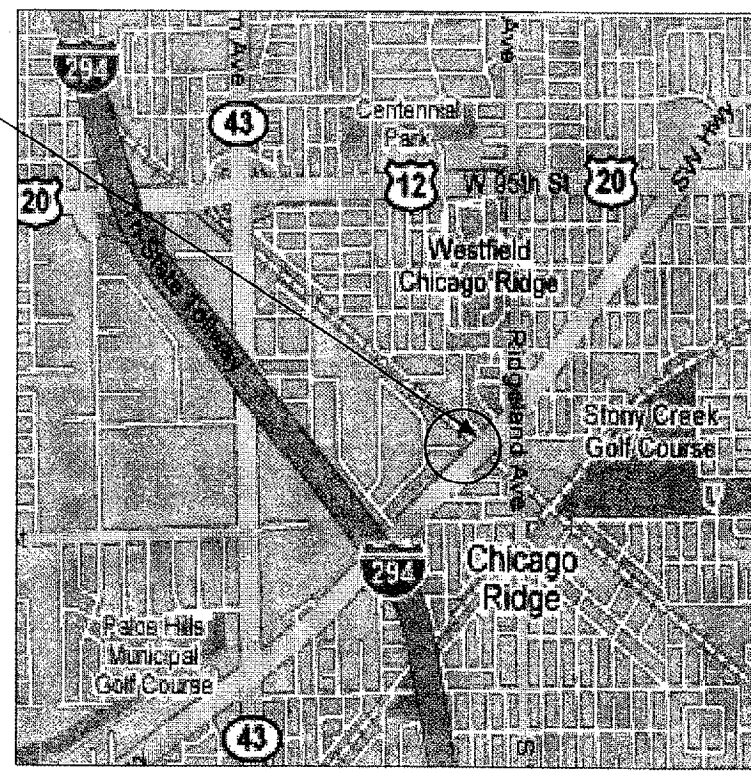
FAU ROUTE 3578: SOUTHWEST HIGHWAY
OVER CSX RR, MELVINA DITCH, & STONY CREEK
SECTION 15VB-1BR-1
PCC DECK BEAM SUPPORTS
COOK COUNTY
C-91-023-08

LOCATION OF IMPROVEMENT
SN 016-0463

R 13 E

LOCATION OF IMPROVEMENT INDICATED THUS:

TRAFFIC DATA
2007 ADT = 20,700
POSTED SPEED LIMIT = 40 MPH



WORTH TOWNSHIP

STATE OF ILLINOIS
DEPARTMENT OF TRANSPORTATION
DIVISION OF HIGHWAYS
SUBMITTED: FEBRUARY 19, 2008
Diane M. O'Keefe
DEPUTY DIRECTOR OF HIGHWAYS, REGION ENGINEER
March 21, 2008
Eric E. Harris
Interim ENGINEER OF DESIGN AND ENVIRONMENT
March 21, 2008
Christine M. Reed
DIRECTOR, DIVISION OF HIGHWAYS

PRINTED BY THE AUTHORITY
OF THE STATE OF ILLINOIS

J.U.L.I.E.
JOINT UTILITY LOCATION INFORMATION
FOR EXCAVATION 1-800-892-0123 OR 811

CONTRACT NO. 60D44

DISTRICT ONE - DESIGN - PLAN PREPARATION ENGINEER
KEN ENG / ROBERT BORO (847)-705-4178

ROUTE	SECTION	COUNTY	TOTAL SHEETS	SHEET NUMBER
FAU 3578	15VB-1BR-1	COOK	5	2

CONTRACT NO 60D44

INDEX OF SHEETS

- 1 TITLE SHEET
- 2 INDEX OF SHEETS, STATE STANDARDS, GENERAL NOTES
- 3 SUMMARY OF QUANTITIES
- 4-5 BRIDGE REPAIRS

STATE STANDARDS

- 701301-02 LANE CLOSURE, 2L, 2W, SHORT TIME OPERATIONS
- 701606-05 URBAN LANE CLOSURE, MULTILANE, 2W WITH MOUNTABLE MEDIAN
- 701901 TRAFFIC CONTROL DEVICES

GENERAL NOTES

BEFORE STARTING ANY EXCAVATION, THE CONTRACTOR SHALL CALL "J.U.L.I.E." AT (800) 892-0123 OR 811 FOR FIELD LOCATIONS OF BURIED ELECTRIC, TELEPHONE AND GAS UTILITIES. 48 HOUR NOTIFICATION IS REQUIRED.

THE CONTRACTOR SHALL COORDINATE CONSTRUCTION ACTIVITIES WITH UTILITY COMPANIES AND THE CITY OF CHICAGO RIDGE.

THE CONTRACTOR WILL NOT BE ALLOWED TO SET UP A YARD OR FIELD OFFICE ON STATE PROPERTY WITHOUT WRITTEN PERMISSION FROM THE DEPARTMENT.

IT SHALL BE THE CONTRACTOR'S RESPONSIBILITY TO VERIFY ALL DIMENSIONS AND CONDITIONS EXISTING IN THE FIELD PRIOR TO CONSTRUCTION AND ORDERING OF MATERIALS.

THE CONTRACTOR SHALL CONTACT THE DISTRICT ONE TRAFFIC CONTROL SUPERVISOR AT (847) 741-4470 A MINIMUM OF 72 HOURS IN ADVANCE OF BEGINNING WORK.

THESE PLANS HAVE BEEN PREPARED FROM NOTES RECEIVED FROM BRIDGE INSPECTORS.

THE CONTRACTOR SHALL BE REQUIRED TO PROVIDE ACCESS TO ABUTTING PROPERTY AT ALL TIMES DURING THE CONSTRUCTION OF THIS PROJECT.

DO NOT SCALE PLANS FOR CONSTRUCTION DIMENSIONS.

ALL CONTRACTOR OPERATIONS, INCLUDING ACCESS POINTS, MUST REMAIN CLEAR OF RAILROAD RIGHT OF WAY AT ALL TIMES.

ILLINOIS DEPARTMENT OF TRANSPORTATION
INDEX OF SHEETS
LIST OF STATE STANDARDS
GENERAL NOTES

ROUTE	SECTION	COUNTY	TOTAL SHEETS	SHEET NUMBER
FAU 3578	15VB-1BR-1	COOK	5	3

CONTRACT NO 60D44

SUMMARY OF QUANTITIES

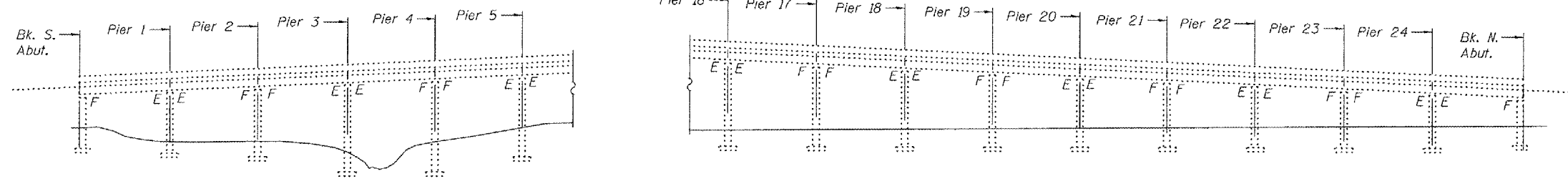
CODE NO.	PAY ITEM	UNIT	TOTAL QUANTITIES	CONSTRUCTION TYPE CODE SFTY-2A	
				100% STATE SN 016-0463 URBAN	
50500405	FURNINSHING AND ERECTING STRUCTURAL STEEL	POUND	108,850	108,850	
67000400	ENGINEER'S FIELD OFFICE, TYPE A	CAL MO	3	3	
67100100	MOBILIZATION	L SUM	1	1	
70102625	TRAFFIC CONTROL AND PROTECTION, STANDARD 701606	L SUM	1	1	
X0322467	TEMPORARY INFORMATION SIGNING FOR LANE CLOSURE	SQ FT	48	48	

ILLINOIS DEPARTMENT OF TRANSPORTATION
SUMMARY OF QUANTITIES

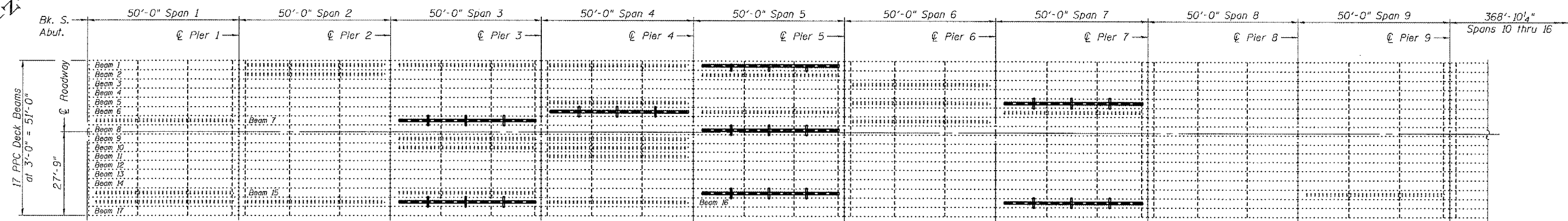
STATE OF ILLINOIS
DEPARTMENT OF TRANSPORTATION

ROUTE NO.	SECTION	COUNTY	SHEET NO.	SHEET	SHEET NO. 1 2 SHEETS
		Cook	5	4	
FED. ROAD DIST. NO. 7		ILLINOIS		FED. AID PROJECT	

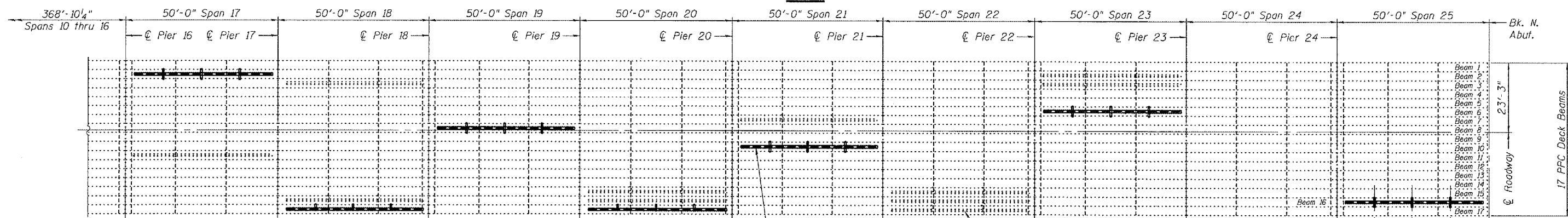
Contract Number: 60D44



ELEVATION



PLAN



PLAN

**Contractor is to verify beam length prior to ordering material. Other sections meeting the section modulus requirements shown may be allowed subject to approval by the Bureau of Bridges and Structures. Maximum Girder depth = ".

* Transverse tie I's (3 per span). Place additional shims at midpoints between tie I's. Securely weld shims to top flange of support beam. Minimum shim size is 6" x flange width.

**W27x114 Typical support beam (Min. S_x = 299 in³)

Existing W27x94 support beam

*Typ. Transverse Tie I Spacing

GENERAL NOTES

All structural steel shall conform to AASHTO Classification M-270 Gr. 36, unless otherwise noted.

Plan dimensions and details relative to existing plans are subject to routine variations. The Contractor shall field verify existing dimensions and details affecting new construction and make necessary approved adjustments prior to construction or ordering of materials. Such variations shall not be cause for additional compensation for a change in scope of the work, however, the Contractor will be paid for the quantity actually furnished based upon the unit price bid for the work.

The contractor is advised that the existing PPC Deck Beams are in a deteriorated condition with reduced load carrying capacity. It is the contractor's responsibility to account for the condition of the beams when developing construction procedures.

See Section 584 of the Standard Specifications for Epoxy Grouting of Threaded Rods; Minimum embedment 9".

All structural steel shall be shop painted with the inorganic zinc rich primer per AASHTO M300, Type 1. No Field Painting required. Cost included with Furnishing and Erecting Structural Steel.

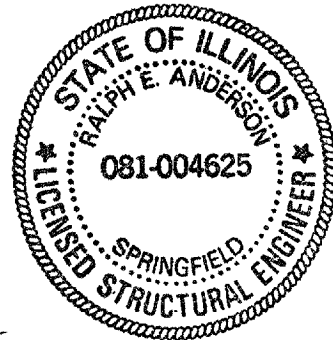
If the contractor's procedure for placement of beams involves placement of cranes or other heavy equipment on the bridge, a detailed procedure shall be submitted to the Engineer for approval. The procedure shall include calculations, prepared and sealed by an Illinois Licensed Structural Engineer, verifying that the equipment and procedure used will not overstress the existing beams. To distribute load to multiple beams and protect the existing surface, in all cases a double layer mat of heavy timbers shall be used at all times under crane tracks or wheels and any outriggers in the down position. If necessary, shims shall be used under the crane mat to ensure uniform contact with the underlying beams.

The cost of epoxy grouting threaded rods on the pier cap, footings and beams shall be included with Furnishing and Erecting Structural Steel.

The cost of excavation required to set piles on footings shall be included with Furnishing and Erecting Structural Steel.

TOTAL BILL OF MATERIAL

ITEM	UNIT	QUANTITY
Furnishing and Erecting Structural Steel	Pound	108,850



Expires: November 30, 2008

DESIGNED	Adrian T. Valloway	March 5, 2008
CHECKED	Victor H. Veliz	EXAMINED
DRAWN	ATH	PASSED
CHECKED	ATH	VHV

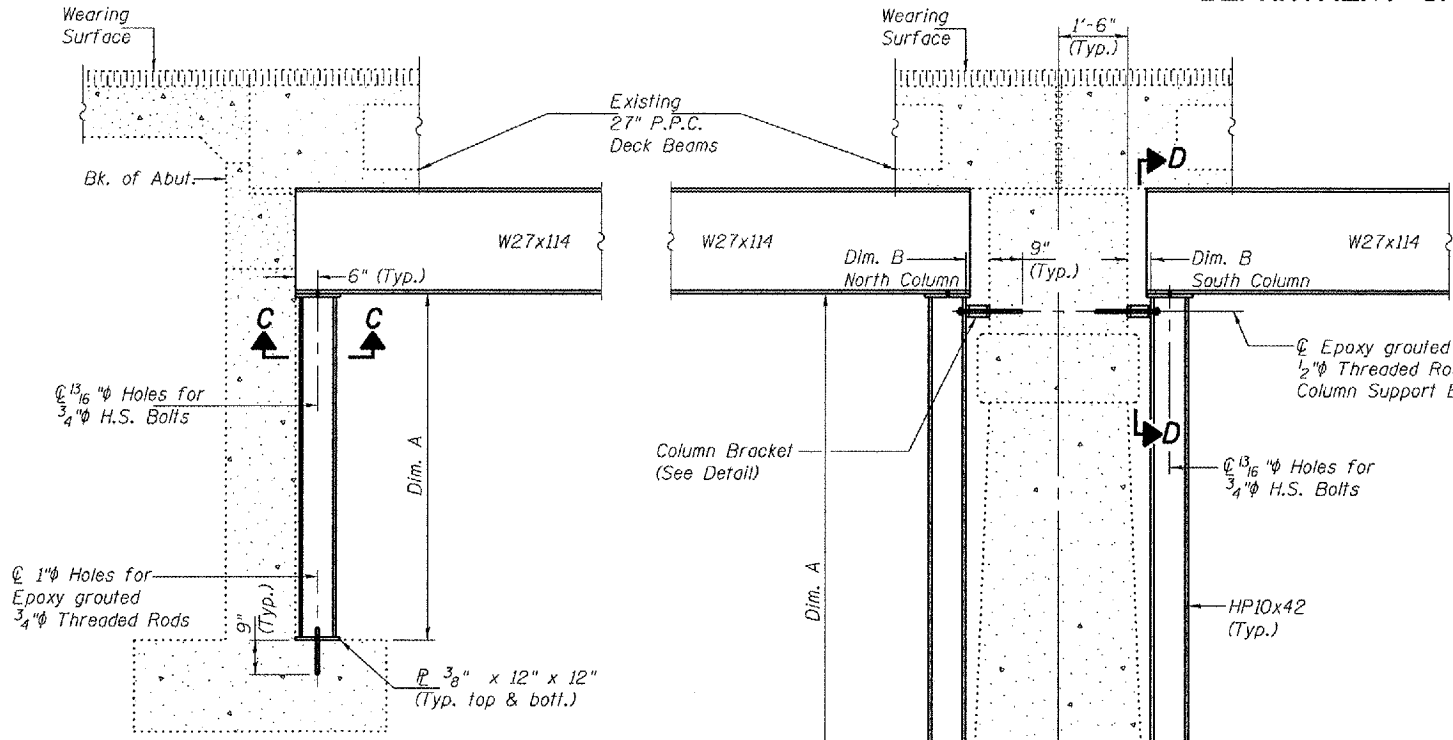
PLAN AND ELEVATION
F.A.U. RT. 3578
COOK COUNTY
SN 016-0463

STATE OF ILLINOIS
DEPARTMENT OF TRANSPORTATION

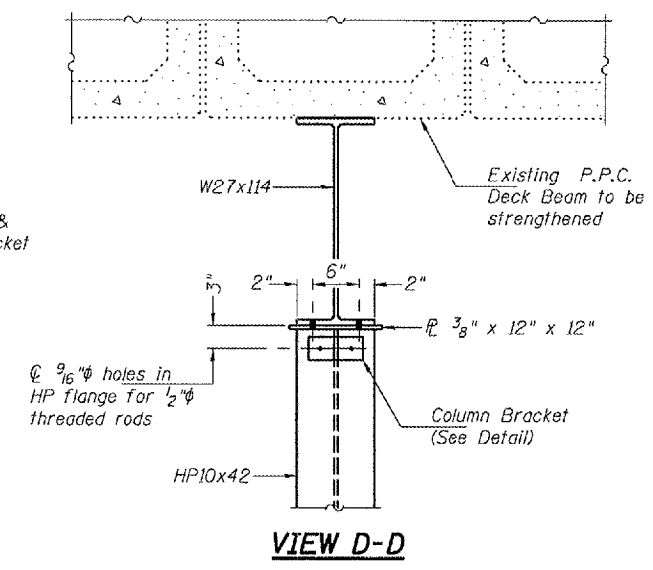
PROJECT NO.	SECTION	COUNTY	SHEET NO.	TOTAL SHEETS
		Cook	5	5
FED. ROAD DIST. NO. 7 ILLINOIS FED. AID PROJECT				

SHEET NO. 2
2 SHEETS

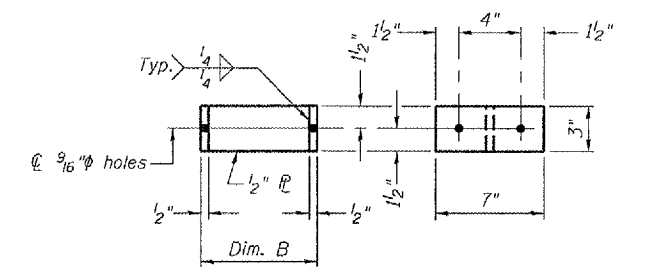
Contract Number: 60D44



SECTION AT NORTH ABUTMENT



VIEW D-D

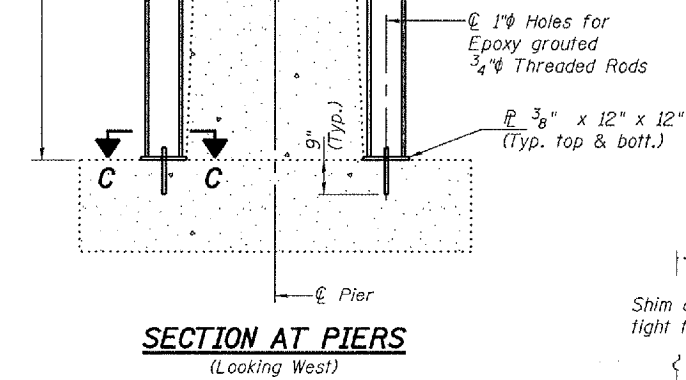


COLUMN BRACKET DETAIL
(No. Req'd = 29)

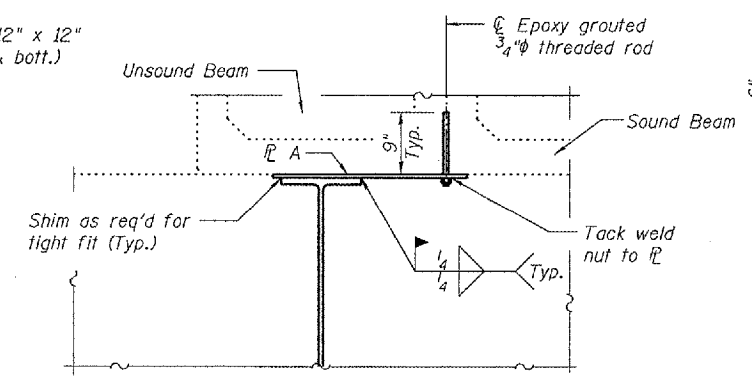
*TABLE OF DIMENSIONS

Span	Beam	Dimension A		Dimension B	
		So. Column	No. Column	So. Column	No. Column
3	7	16'-6 ¹³ / ₁₆ "	23'-9 ⁷ / ₈ "	7 ⁷ / ₈ "	11 ⁵ / ₈ "
	16	16'-3 ⁹ / ₁₆ "	23'-6 ⁵ / ₈ "	7 ⁷ / ₈ "	11 ⁵ / ₈ "
4	6	24'-0 ¹³ / ₁₆ "	26'-0 ⁵ / ₈ "	11 ⁵ / ₈ "	12 ³ / ₄ "
	1	26'-1 ¹ / ₈ "	24'-0 ⁵ / ₁₆ "	12 ³ / ₄ "	11 ⁷ / ₈ "
5	8	26'-4 ¹ / ₄ "	24'-4 ¹ / ₂ "	12 ³ / ₄ "	11 ⁷ / ₈ "
	15	26'-1 ⁵ / ₁₆ "	24'-1 ³ / ₁₆ "	12 ³ / ₄ "	11 ⁷ / ₈ "
7	5	27'-0 ¹ / ₁₆ "	29'-0 ¹ / ₈ "	13 ¹ / ₂ "	14 ¹ / ₄ "
	16	26'-9 ¹³ / ₁₆ "	28'-9 ⁵ / ₈ "	13 ¹ / ₂ "	14 ¹ / ₄ "
17	2	27'-10 ³ / ₈ "	26'-7 ¹ / ₂ "	13 ³ / ₄ "	13"
18	17	26'-2 ¹ / ₁₆ "	24'-3 ¹ / ₁₆ "	13"	11 ⁷ / ₈ "
19	8	24'-3 ¹⁵ / ₁₆ "	22'-4 ¹ / ₁₆ "	11 ⁷ / ₈ "	10 ³ / ₄ "
20	17	21'-8 ¹⁵ / ₁₆ "	19'-8 ¹⁵ / ₁₆ "	10 ³ / ₄ "	9 ⁵ / ₈ "
21	10	19'-9 ⁷ / ₈ "	17'-9 ³ / ₄ "	9 ⁵ / ₈ "	8 ¹ / ₂ "
23	6	15'-3 ³ / ₄ "	13'-3 ⁵ / ₈ "	7 ³ / ₈ "	6 ¹ / ₄ "
25	16	10'-6 ¹³ / ₁₆ "	7'-5 ¹ / ₂ "	5 ¹ / ₈ "	-

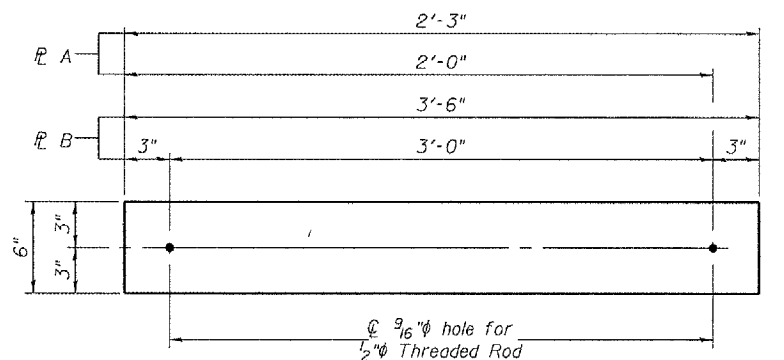
* Dimensions are based on elevations taken from the existing plans. The Contractor should verify dimensions before fabricating columns.



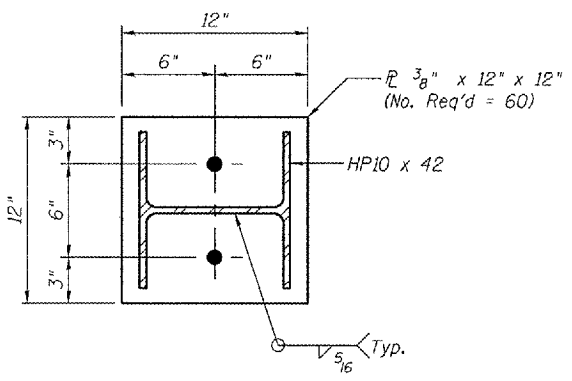
SECTION AT PIERS
(Looking West)



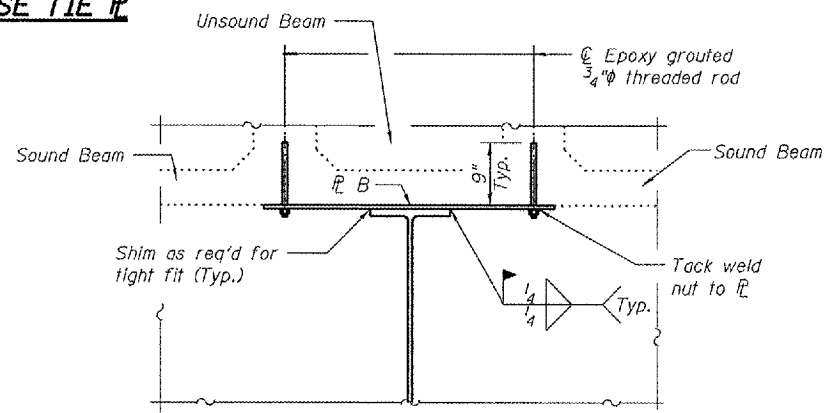
TYPICAL SECTION AT FASCIA BEAM TRANSVERSE TIE PL



TRANSVERSE TIE PL'S
PL A 1/2" x 6" x 2'-3" 9 Req'd
PL B 1/2" x 6" x 3'-6" 36 Req'd



SECTION C-C



TYPICAL SECTION AT INTERIOR BEAM TRANSVERSE TIE PL

DESIGNED	A.T.H.
CHECKED	V.H.V.
DRAWN	Drew Christopher
CHECKED	A.T.H. V.H.V.

EXAMINED	March 5, 2008
PASSED	Walsh E. Anderson

SUPPORT DETAILS
F.A.U. RT. 3578
COOK COUNTY
SN 016-0463