

ROUTE	SECTION	COUNTY	TOTAL SHEETS	SHEET NUMBER
FAI 90/94	2007-58LS	COOK	4	1

FOR INDEX OF SHEETS SEE SHEET 2

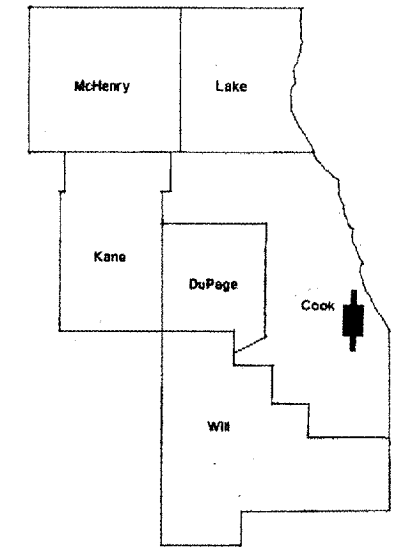
CONTRACT 60D97

C-91-138-08

STATE OF ILLINOIS
DEPARTMENT OF TRANSPORTATION
DIVISION OF HIGHWAYS
DISTRICT ONE
PROPOSED HIGHWAY PLANS

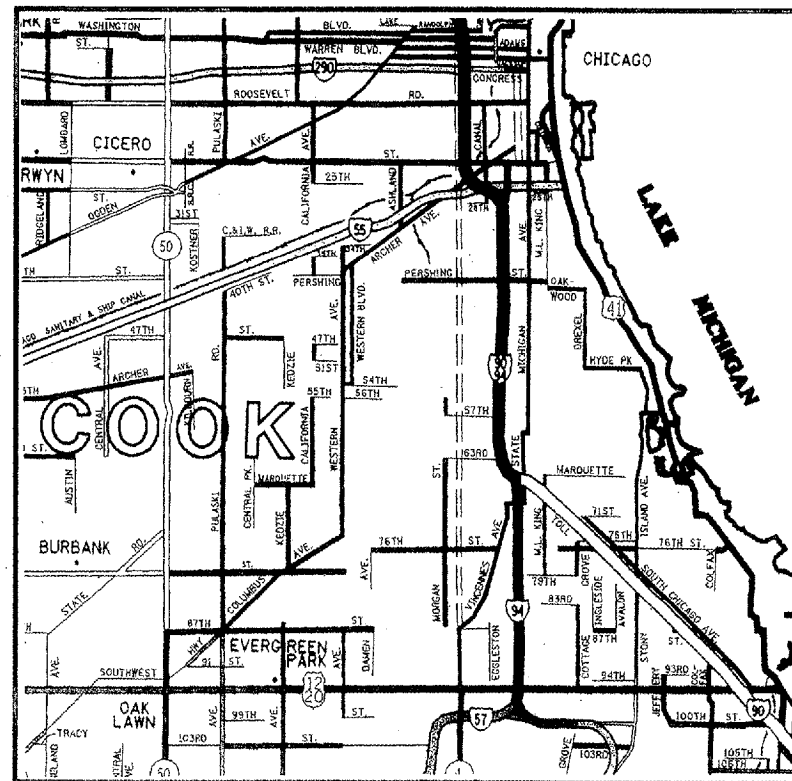
IMPROVEMENT IS
LOCATED IN THE CITY
OF CHICAGO

ROUTE: FAI 90/94
16th St. to Martin Luther King Dr./Halsted Ave.
SECTION: 2007-58LS
LANDSCAPE ESTABLISHMENT
COOK COUNTY
C-91-138-08



LOCATION OF IMPROVEMENT INDICATED THUS:

IMPROVEMENT
LOCATION



ROUTE	SECTION	COUNTY	TOTAL SHEETS	SHEET NUMBER
FAI 90/94	2007-58LS	COOK	4	2

CONTRACT 60D97

INDEX OF SHEETS

- 1) TITLE SHEET
- 2) INDEX OF SHEETS
GENERAL NOTES
STATE STANDARDS
- 3) SUMMARY OF QUANTITIES
- 4) TC-17 TRAFFIC CONTROL DETAILS FOR FREEWAY
SHOULDER CLOSURES PARTIAL RAMP CLOSURES

STATE STANDARDS

701001-01 701006-02 701101-01

701106-01 701901

GENERAL NOTES

GENERAL LOCATION ROADSIDE AREAS SHALL BE FROM 16TH ST TO MARTIN LUTHER KING DR./HALSTED AVE ON THE DAN RYAN EXPRESSWAY (I-90/94).

EXACT WORK LOCATIONS WILL BE DIRECTED BY THE RESIDENT ENGINEER.

THE CONTRACTOR SHALL ADHERE TO LIMITS OF RESTORATION SHOWN. AREAS OUTSIDE THESE LIMITS THAT ARE DAMAGED OR DISTURBED BY THE CONTRACTOR, SHALL BE RESTORED BY THE CONTRACTOR AT THEIR OWN EXPENSE. NO ADDITIONAL COMPENSATION WILL BE ALLOWED.

THE CONTRACTOR SHALL CONTACT THE BUREAU OF TRAFFIC AT (847) 705-4151 FOR TRAFFIC CLEARANCE NO LATER THAN 11:00 A.M THE DAY BEFORE WORK BEGINS.

ILLINOIS DEPARTMENT OF TRANSPORTATION

INDEX OF SHEETS
GENERAL NOTES
STATE STANDARDS

ROUTE	SECTION	COUNTY	TOTAL SHEETS	SHEET NUMBER
I-90/94	2007-58LS	COOK	4	3

CONTRACT 60D97

SUMMARY OF QUANTITIES

PAY ITEM	DESCRIPTION	UNIT	TOTAL	CONSTRUCTION
				FUND Y003
X0325604	WEED CONTROL, PRE-EMERGENT HERBICIDE	GALLON	2.5	2.5
25000750	MOWING	ACRE	47	47
67100100	MOBILIZATION	L SUM	1	1
X0322324	WEED CONTROL, TEASEL	POUND	4	4
X0322326	WEED CONTROL, THISTLE	POUND	17	17
X0325921	PLANT CARE	SQ YD	7200	7200

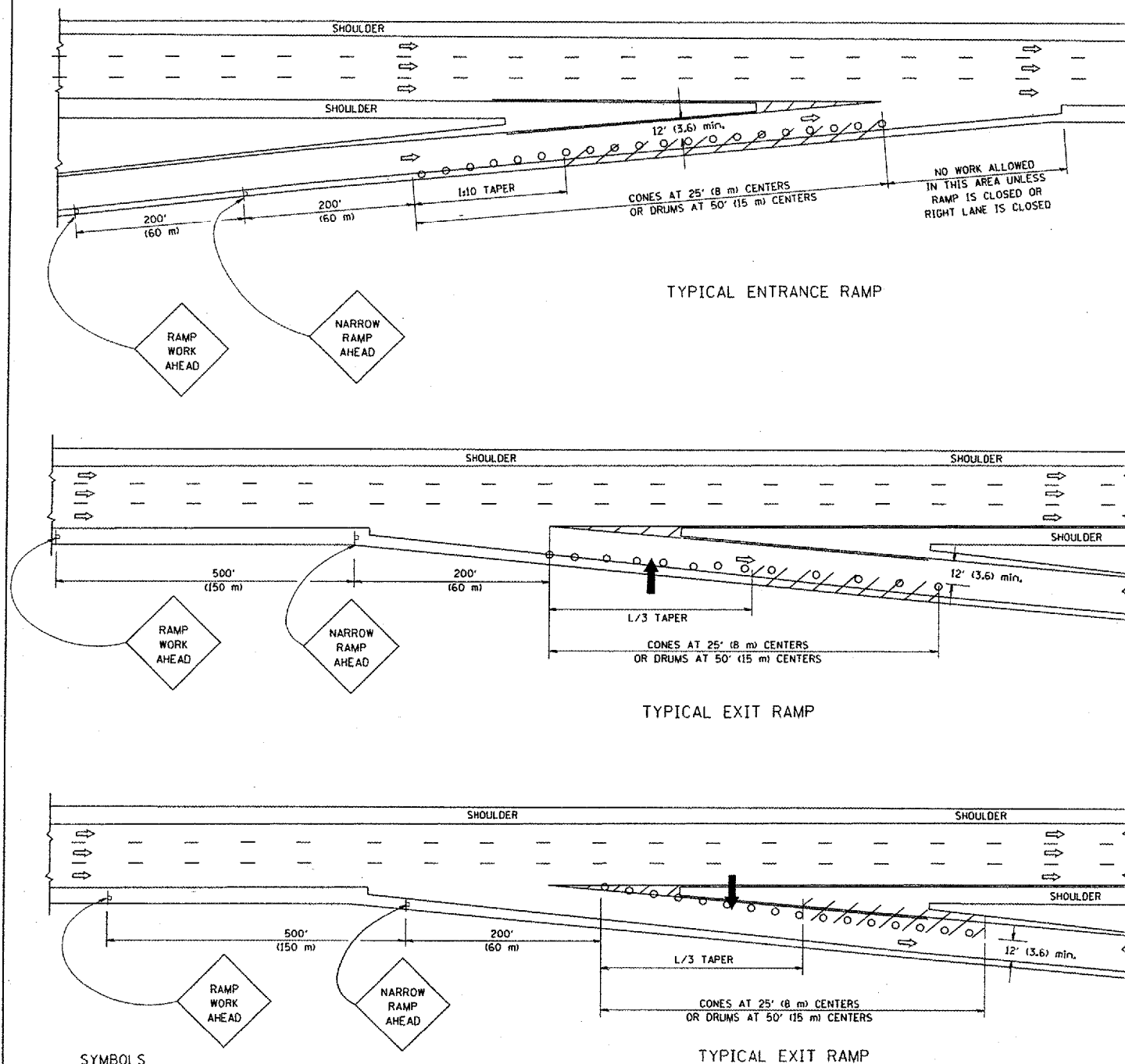
URBAN
100% STATE

ILLINOIS DEPARTMENT OF TRANSPORTATION

SUMMARY OF QUANTITIES

F.A. RTE.	SECTION	COUNTY	TOTAL SHEETS	SHEET NO.
90/12007-58LS	COOK		4	1
STA.	TO STA.			
FED. ROAD DIST. NO.	ILLINOIS FED. AID PROJECT		60P97	

PARTIAL RAMP CLOSURE DETAILS



SYMBOLS

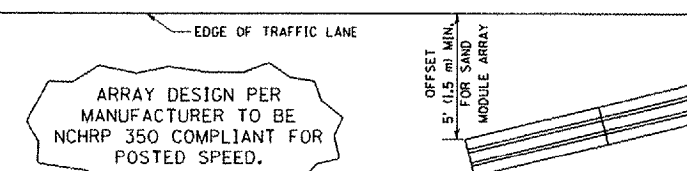
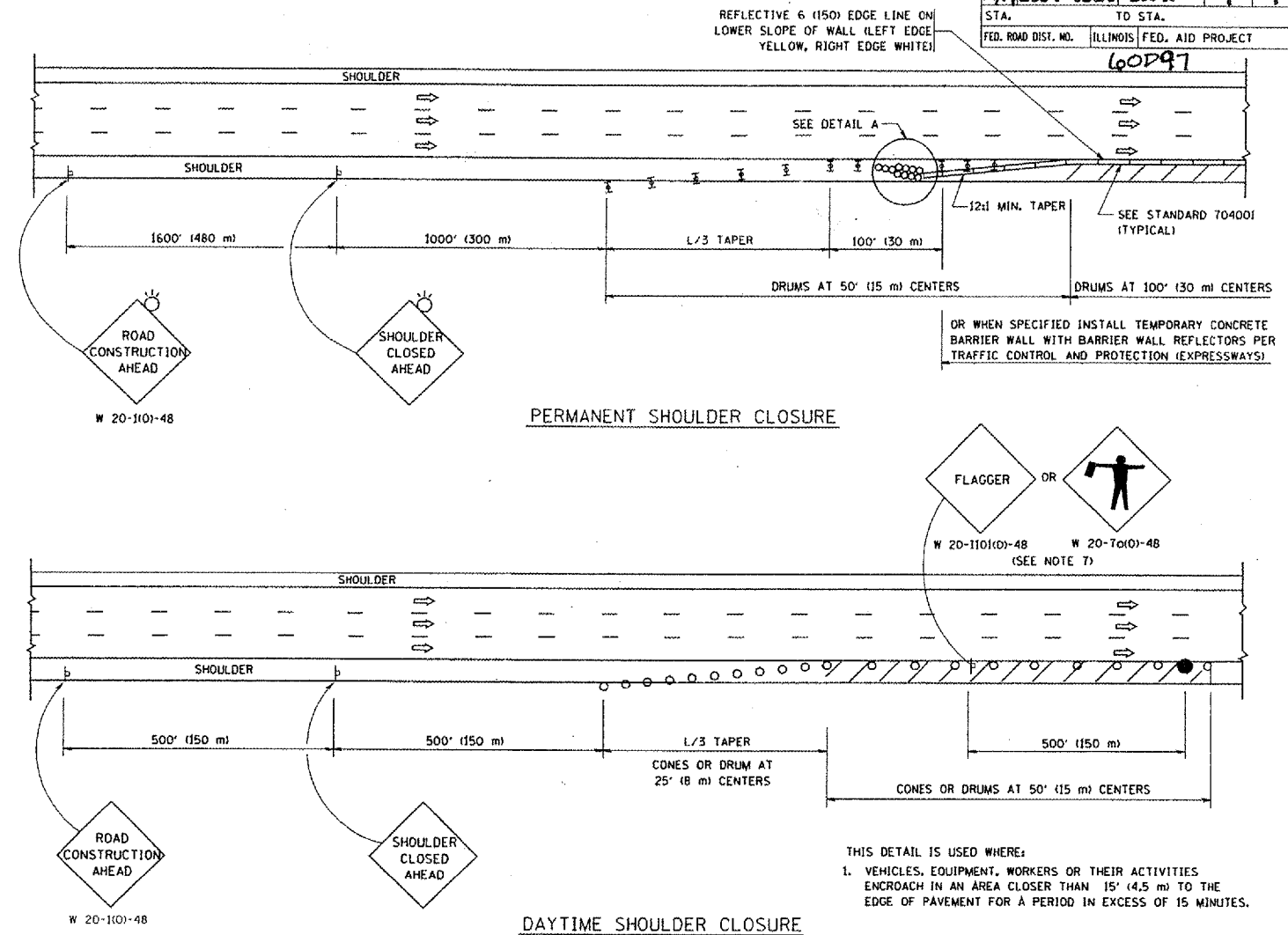
- ARROWBOARD
- WORK AREA
- SIGN ON PORTABLE OR PERMANENT SUPPORT
- FLAGGER WITH CONTROL SIGN
- TYPE II BARRICADE, DRUM OR VERTICAL BARRICADE WITH STEADY BURN MONO-DIRECTIONAL LIGHT
- CONE, DRUM OR BARRICADE

GENERAL NOTES

- THE "L" DISTANCE EQUALS:

SPEED LIMIT	FORMULAS
45 mph (80 km/hr) OR GREATER:	METRIC $L=0.65(WXS)$ ENGLISH $L=(W/15)S$
W = WIDTH OF OFFSET IN FEET (METERS)	S = NORMAL POSTED SPEED MPH (KM/H)
- PLASTIC DRUMS WITH HIGH PERFORMANCE REFLECTIVE SHEETING AND STEADY BURNING LIGHTS ARE REQUIRED FOR ALL NIGHTTIME CLOSURES.
- ALL SIGNS SHALL BE POST MOUNTED IF THE CLOSURE TIME EXCEEDS FOUR DAYS.
- FLASHING LIGHTS SHALL BE USED DURING THE HOURS OF DARKNESS AND SHALL BE INSTALLED ABOVE THE FIRST TWO SETS OF SIGNS.

SHOULDER CLOSURE DETAILS



DETAIL "A"
IMPACT ATTENUATOR, TEMPORARY
(SEE NOTE 5)

ALL DIMENSIONS ARE IN INCHES (MILLIMETERS) UNLESS OTHERWISE SHOWN.

REVISIONS	
NAME	DATE
DWS	11/96
JAF	12/02
NCHRP 350	04/03
JAF	2/06
SPB	1/07

ILLINOIS DEPARTMENT OF TRANSPORTATION
TRAFFIC CONTROL DETAILS
FOR FREEWAY
SHOULDER CLOSURES
PARTIAL RAMP CLOSURES
DESIGNED BY: DWS
DRAWN BY:
CHECKED BY:
SCALE: NONE
TC-17

PLOT DATE = 3/7/2007
PLOT SCALE = 50/8000 = 1/160
USER NAME = bboard