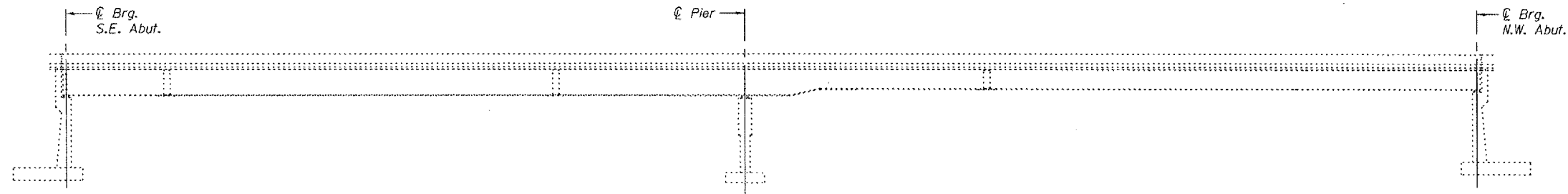


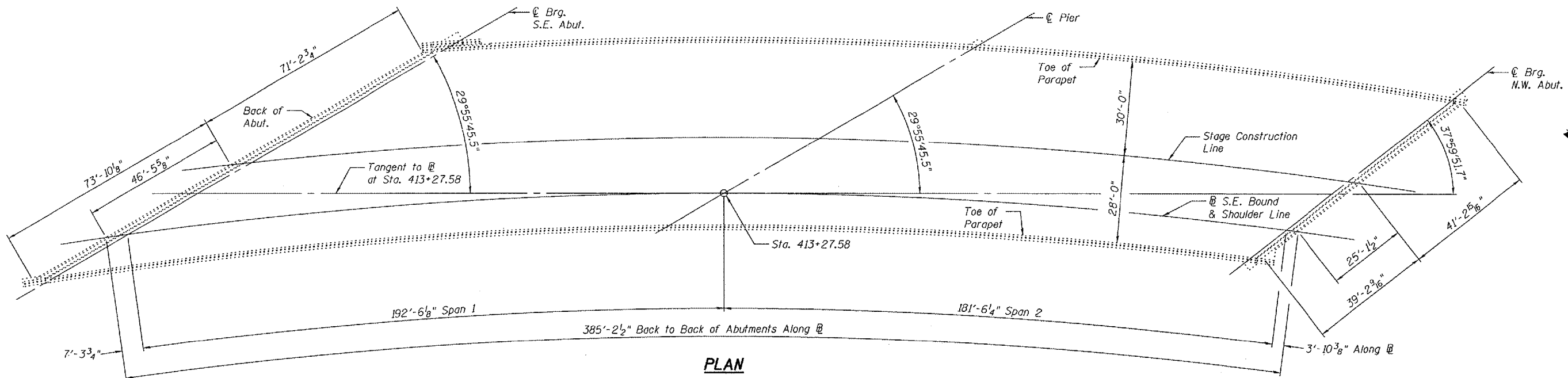
STATE OF ILLINOIS
DEPARTMENT OF TRANSPORTATION

ROUTE NO.	SECTION	COUNTY	SHEETS	SHEET NO.
		Cook	18	6
Contract Number: 60E14				

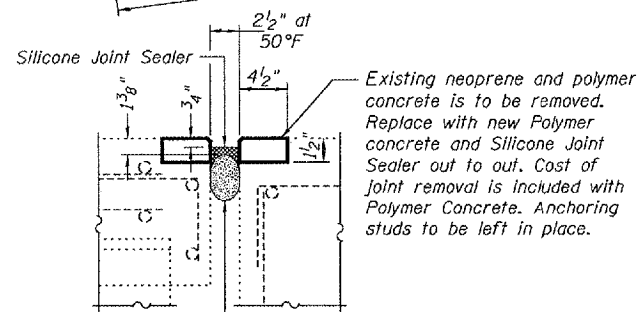
4 SHEETS



ELEVATION

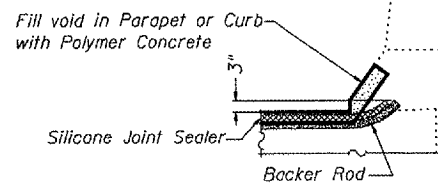


PLAN



Backer Rod having a diameter 25% greater than the joint opening at the time of installation.

TYPICAL N.W. ABUTMENT
JOINT SECTION



TYPICAL END OF SEAL TREATMENT

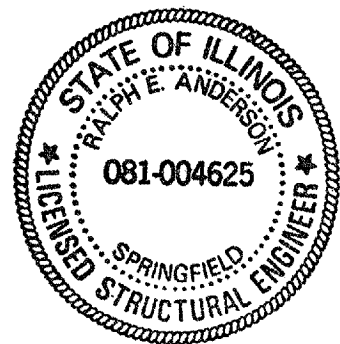
TOTAL BILL OF MATERIAL

ITEM	UNIT	QUANTITY
Concrete Removal	Cu. Yd.	12.3
Concrete Superstructure	Cu. Yd.	12.3
Neoprene Expansion Joint 2 1/2"	Foot	147
Silicone Joint Sealer, 2"	Foot	83
Polymer Concrete	Cu. Ft.	7.6
Reinforcement Bars, Epoxy Coated	Pound	2,550
Bar Splicers	Each	13

GENERAL NOTES

Reinforcement bars shall conform to the requirements of ASTM A 706 Gr 60 (IL Modified). See Special Provisions.
 Reinforcement bars designated (E) shall be epoxy coated.
 Prior to pouring the new concrete deck, all heavy or loose rust, loose mill scale, and other loose or potentially detrimental foreign material shall be removed from the surfaces in contact with concrete. Tightly adhered paint may remain unless otherwise noted. Removal shall be accomplished by methods that will not damage the steel and the cost will be included in the pay item covering removal of the existing concrete.
 Plan dimensions and details relative to existing plans are subject to routine variations. The Contractor shall field verify existing dimensions and details affecting new construction and make necessary approved adjustments prior to construction or ordering of materials. Such variations shall not be cause for additional compensation for a change in scope of the work, however, the Contractor will be paid for the quantity actually furnished based upon the unit price bid for the work.

Existing reinforcement bars extending into the removal area shall be cleaned, straightened and incorporated into the new construction. Any reinforcement bars that are damaged during concrete removal shall be replaced with an approved bar splicer or anchorage system. Cost included with Concrete Removal.
 As directed by the Engineer, existing construction accessories welded to the top flange of beams and girders shall be removed. The weld areas shall be ground flush and inspected for cracks using magnetic particle testing (MT) or dye penetrant testing (PT) by an individual acceptable to the Engineer. Any cracks that can not be removed by grinding 1/4" inch deep shall be identified and reported to the Bureau of Bridges and Structures for further disposition. The cost of removing welded accessories, grinding and inspecting weld areas and grinding cracks will be paid for according to Article 109.04 of the Standard Specifications.
 Joint openings shall be adjusted according to Article 520.04 of the Std. Specs. when the deck is poured at an ambient temperature other than 50° F.



DESIGNED	Urich-H. Velek	March 10, 2008
CHECKED	[Signature]	EXAMINED [Signature]
DRAWN	[Signature]	PASSED [Signature]
CHECKED	VH/ASB	

PLAN AND ELEVATION
F.A.I. RT. 90/94
COOK COUNTY
SN 016-2574