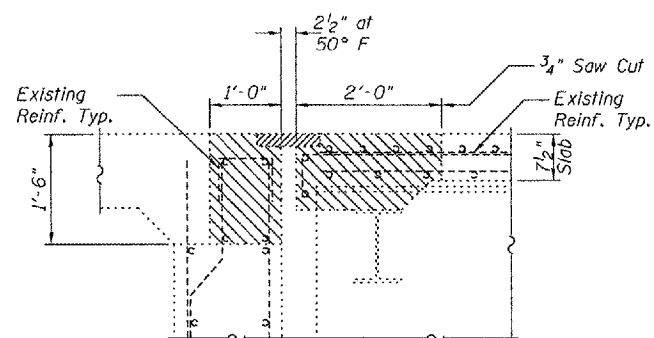


STATE OF ILLINOIS
DEPARTMENT OF TRANSPORTATION

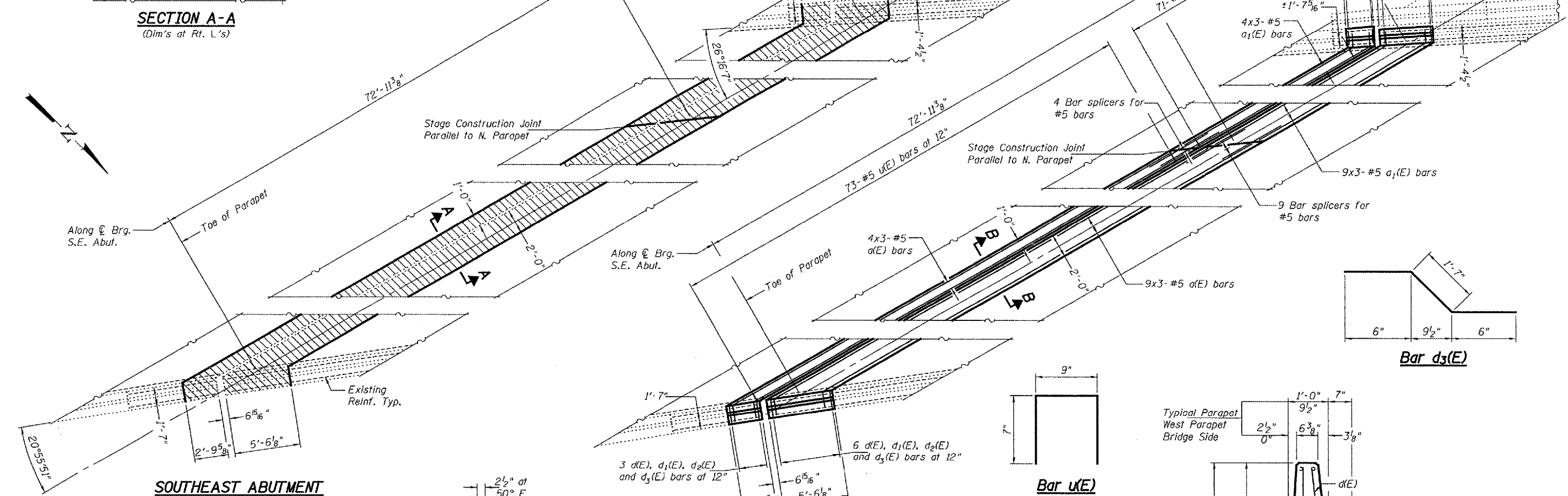
ROUTE NO.	SECTION	COUNTY	SHEETS	SHEET NO.
		Cook	18	7
SHEET NO. 2 4 SHEETS				

Contract Number: 60E14



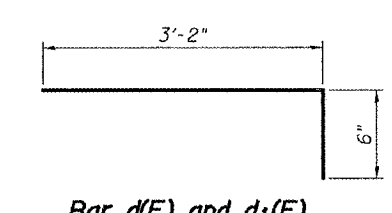
SECTION A-A
(Dim's at Rt. L's)

Notes:
Hatched area indicates area of concrete removal.

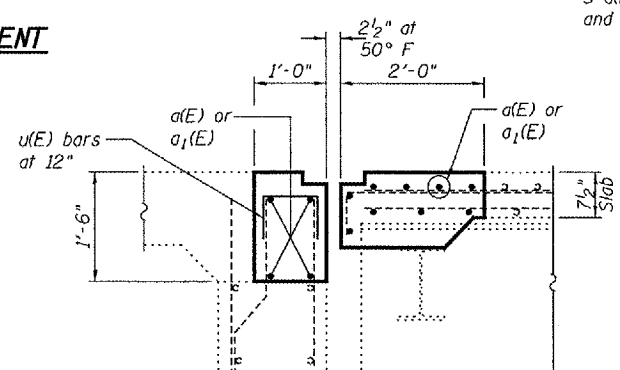


**SOUTHEAST ABUTMENT
REMOVAL PLAN**

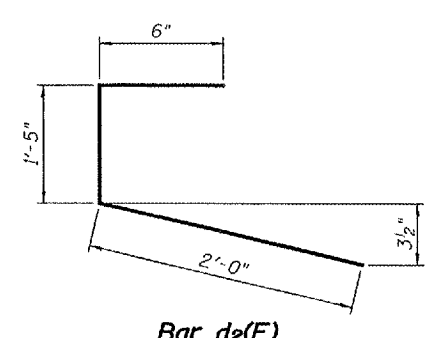
**SOUTHEAST ABUTMENT
PARTIAL PLAN**



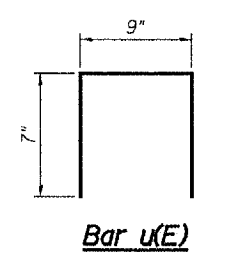
Bar d(E) and d1(E)



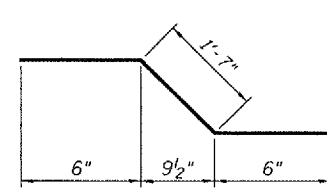
SECTION B-B
(Dim's at Rt. L's)



Bar d2(E)



Bar u(E)



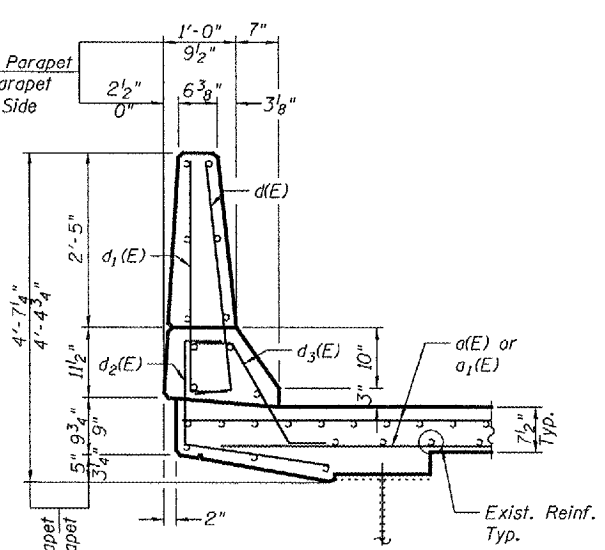
Bar d3(E)

Min Bar Laps
#5 = 2'-2"

BILL OF MATERIAL

Bar	No.	Size	Length	Shape
a(E)	39	#5	25'-9"	—
a1(E)	39	#5	24'-11"	—
d(E)	17	#5	3'-8"	┘
d1(E)	17	#4	3'-8"	┘
d2(E)	17	#4	3'-11"	┘
d3(E)	17	#5	2'-7"	┘
u(E)	144	#5	1'-11"	┘
Concrete Removal		Cu. Yd.	12.3	
Concrete Superstructure		Cu. Yd.	12.3	
Bar Splicers		Each	13	
Reinforcement Bars, Epoxy Coated		Lbs.	2,550	

Bars indicated thus 1 x 2-#5 etc. indicates 1 line of bars with 2 lengths per line.



TYPICAL PARAPET SECTION

JOINT DETAILS
F.A.I. RT. 90/94
COOK COUNTY
SN 016-2574

DESIGNED	V.H.V.
CHECKED	A.J.B.
DRAWN	Drew Christopher
CHECKED	V.H.V. A.J.B.

EXAMINED	March 10, 2008
PASSED	Carl Perry ENGINEER OF STRUCTURAL SERVICES
	Ralph E. Anderson ENGINEER OF BRIDGES AND STRUCTURES