

F.A.P. RTE.	SECTION	COUNTY	TOTAL SHEETS	SHEET NO.
374	3268F-R-1	COOK	279	1

CONTRACT NO. 62387  
 279 + 5 - 1 = 283

FOR INDEX OF SHEETS, SEE SHEET 2.

STATE OF ILLINOIS  
 DEPARTMENT OF TRANSPORTATION  
 DIVISION OF HIGHWAYS

**PROPOSED  
 HIGHWAY PLANS**

F.A.P. ROUTE 374 (ILLINOIS ROUTE 21), MILWAUKEE AVE.  
 SECTION 3268F-R-1

PROJECT NO. *NHF-BRF-0374(013)*  
 SOUTH OF WILLOW ROAD TO NORTH OF SANDERS ROAD  
 ROADWAY RECONSTRUCTION, ADD LANES, TRAFFIC  
 SIGNAL MODERNIZATION, LIGHTING AND BRIDGE REPLACEMENT  
 COOK COUNTY  
 C-91-048-02

PROJECT LOCATED IN THE CITY OF PROSPECT HEIGHTS, THE VILLAGES OF GLENVIEW AND MOUNT PROSPECT AND THE FOREST PRESERVE DISTRICT OF COOK COUNTY

**DESIGN DESIGNATION:**

2750 (20) OTHER PRINCIPAL  
 ARTERIAL 6.03 (PCC-20)

**TRAFFIC DATA:**

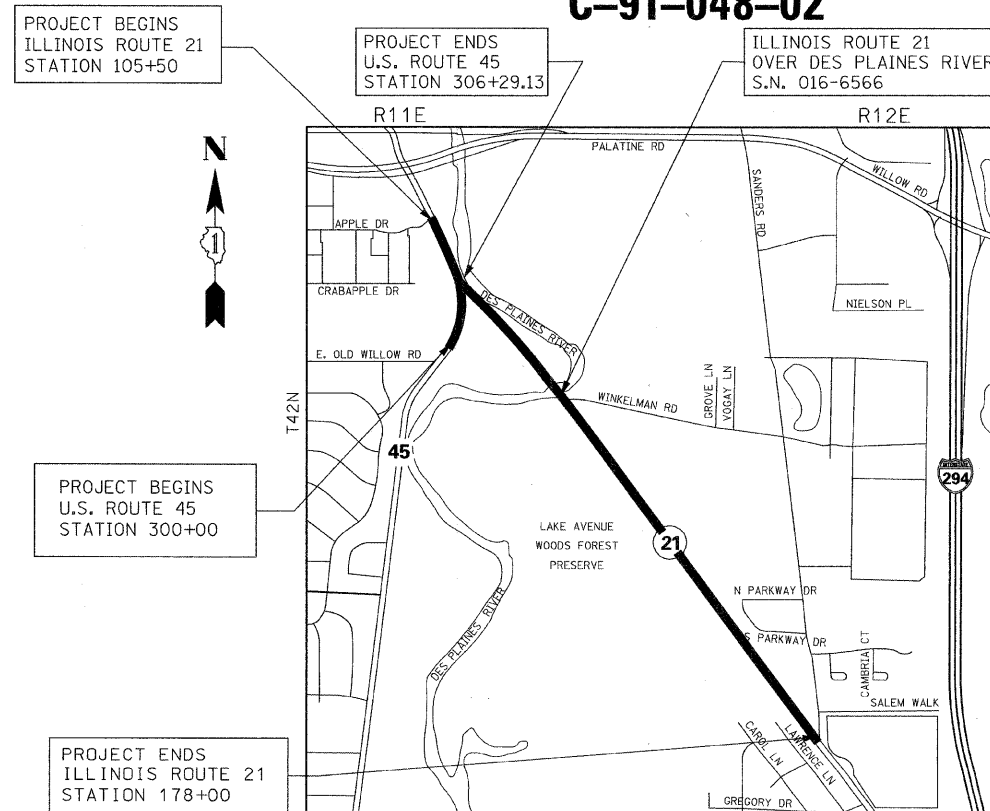
ADT 24530 (1998)  
 27500 (2020)  
 33000 (2030)  
 POSTED SPEED 40 MPH  
 DESIGN SPEED 45 MPH

**PROJECT DESCRIPTION:**

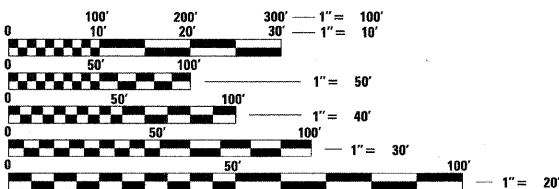
THIS PROJECT CONSISTS OF EARTH EXCAVATION, CONSTRUCTION OF STORM SEWERS AND DRAINAGE STRUCTURES, WATER MAIN RELOCATION, ROADWAY RECONSTRUCTION, MODERNIZATION OF TRAFFIC SIGNALS, LIGHTING, LANDSCAPING, BRIDGE REPLACEMENT AT ILLINOIS ROUTE 21 OVER THE DES PLAINES RIVER S.N. 016-6566 (PROP.), AND ALL INCIDENTAL AND COLLATERAL WORK AS NECESSARY TO COMPLETE THE IMPROVEMENT SHOWN HEREIN AND DESCRIBED IN THE SPECIFICATIONS.



LOCATION OF SECTION INDICATED THUS: - [black rectangle] -



NORTHFIELD TOWNSHIP  
**LOCATION MAP**  
 SCALE: 1"=1000'



FULL SIZE PLANS HAVE BEEN PREPARED USING STANDARD ENGINEERING SCALES. REDUCED SIZED PLANS WILL NOT CONFORM TO STANDARD SCALES. IN MAKING MEASUREMENTS ON REDUCED PLANS, THE ABOVE SCALES MAY BE USED.

J.U.L.I.E.  
 JOINT UTILITY LOCATION INFORMATION FOR EXCAVATION  
 1-800-892-0123 OR 811

CONTRACT NO. 62387

GROSS LENGTH OF IMPROVEMENT 7,250.00 FEET = 1.373 MILES  
 NET LENGTH OF IMPROVEMENT 7,250.00 FEET = 1.373 MILES



*Jean-Alix Peralte*  
 2-5-08  
**JEAN-ALIX PERALTE, P.E.**  
 NO. 062-049189  
 EXP. DATE: 11/30/2009  
 ROADWAY SHEETS  
 1-83, 85-128, 216-264



*Irwin A. Berman*  
 2/5/08  
**IRWIN A. BERMAN, P.E.**  
 NO. 062-029180  
 EXP. DATE: 11/30/2009  
 LIGHTING SHEETS  
 200-215



*Lawrence L. Kirchner*  
 2/5/08  
**LAWRENCE L. KIRCHNER, S.E.**  
 NO. 081-005343  
 EXP. DATE: 11/30/2008  
 STRUCTURAL SHEETS  
 84, 129-160



*Robert A. Swanson*  
 2/19/08  
**ROBERT A. SWANSON, P.E.**  
 NO. 062-058800  
 EXP. DATE: 11/30/2009  
 TRAFFIC SIGNAL SHEETS  
 161-199

STATE OF ILLINOIS  
 DEPARTMENT OF TRANSPORTATION  
 DIVISION OF HIGHWAYS

SUBMITTED JANUARY 31<sup>ST</sup>, 20 08

*Diane M. O'Keefe*  
 DEPUTY DIRECTOR OF HIGHWAYS, REGION 1 ENGINEER

*March 24, 20 08*  
*Eric Edman*  
 INTERIM ENGINEER OF DESIGN AND ENVIRONMENT

*March 21, 20 08*  
*Christine M. Reed*  
 DIRECTOR, DIVISION OF HIGHWAYS

**STV Incorporated**  
 engineers/architects/scientists/construction managers  
 200 W Monroe - Suite 1650  
 Chicago, Illinois 60606  
 (312) 553-0655  
 FAX: (312) 553-0661

**SPAN Tech, Inc.**  
 311 S. Wacker Drive, Suite 2400  
 Chicago, IL 60606  
 phone: 312.277.8808  
 fax: 312.277.8985  
 web: www.SpanTech.com

**PRINTED BY THE AUTHORITY  
 OF THE STATE OF ILLINOIS**

DISTRICT ONE CONSULTANT PROJECT MANAGER: ISSAM RAYYAN - (847) 705-4556

Rev.