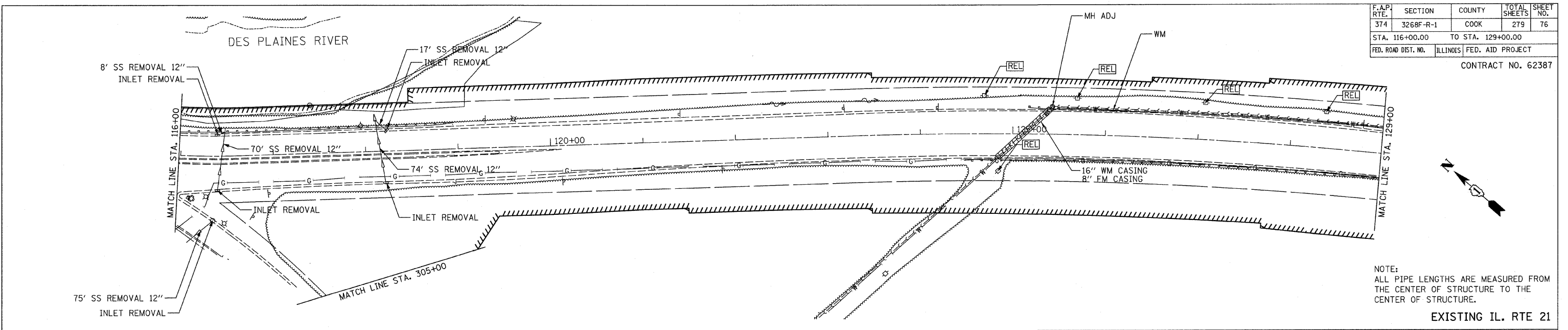
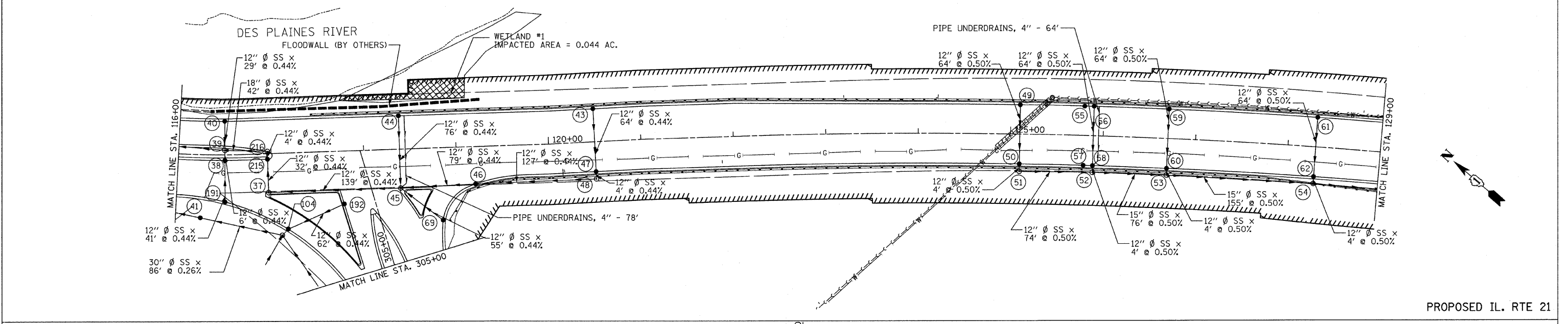


DATE	BY	REVISIONS

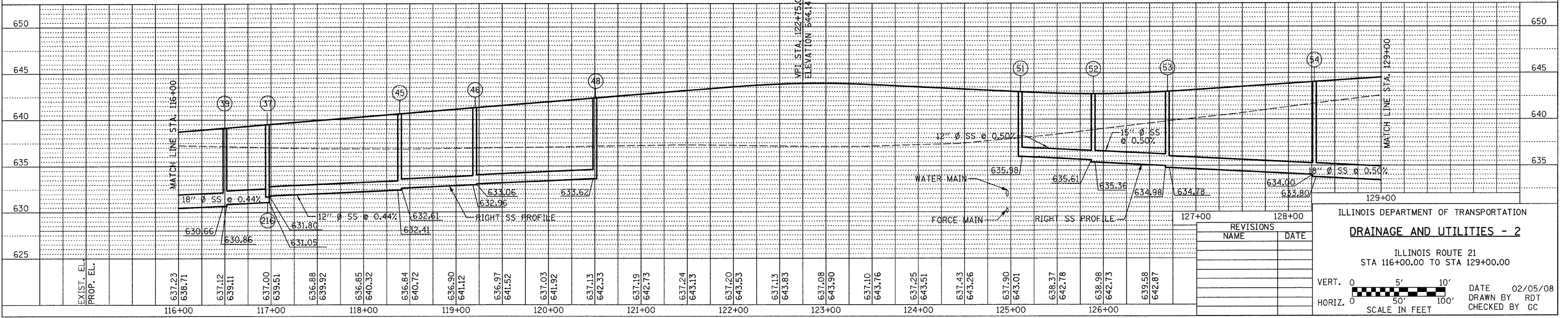
DATE	BY	REVISIONS



EXISTING IL. RTE 21



PROPOSED IL. RTE 21



ILLINOIS DEPARTMENT OF TRANSPORTATION
DRAINAGE AND UTILITIES - 2
 ILLINOIS ROUTE 21
 STA 116+00.00 TO STA 129+00.00

VERT. 0 5' 10'
 HORIZ. 0 50' 100'
 SCALE IN FEET

REVISIONS	
NAME	DATE

DATE 02/05/08
 DRAWN BY RDT
 CHECKED BY GC

EXIST. EL.	PROP. EL.	116+00	117+00	118+00	119+00	120+00	121+00	122+00	123+00	124+00	125+00	126+00	127+00	128+00	129+00
		637.23	637.00	636.88	636.85	636.84	636.90	637.03	637.19	637.24	637.25	637.43	637.90	638.37	638.98
		638.71	639.11	639.92	640.32	640.72	641.12	641.52	642.73	643.13	643.51	643.26	643.01	642.78	642.73
		637.12	639.51	639.92	640.32	640.72	641.12	641.52	642.73	643.13	643.51	643.26	643.01	642.78	642.73
		639.11	639.51	639.92	640.32	640.72	641.12	641.52	642.73	643.13	643.51	643.26	643.01	642.78	642.73
		639.11	639.51	639.92	640.32	640.72	641.12	641.52	642.73	643.13	643.51	643.26	643.01	642.78	642.73
		639.11	639.51	639.92	640.32	640.72	641.12	641.52	642.73	643.13	643.51	643.26	643.01	642.78	642.73
		639.11	639.51	639.92	640.32	640.72	641.12	641.52	642.73	643.13	643.51	643.26	643.01	642.78	642.73
		639.11	639.51	639.92	640.32	640.72	641.12	641.52	642.73	643.13	643.51	643.26	643.01	642.78	642.73