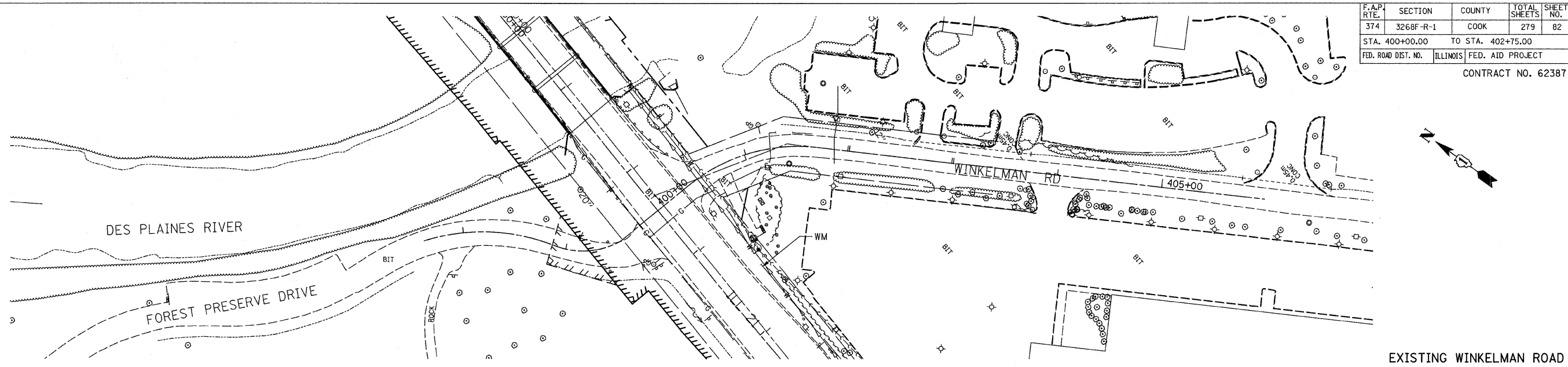


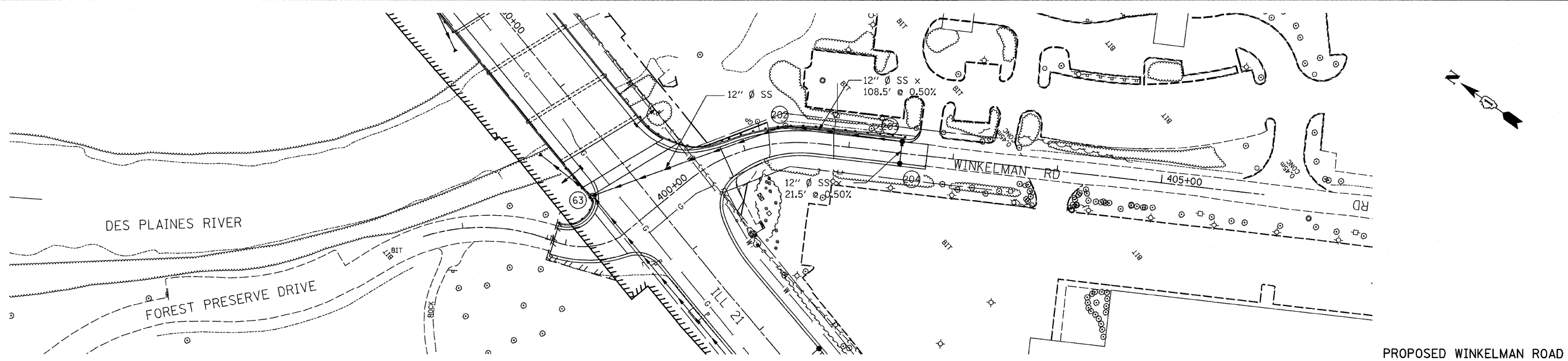
F.A.P. RTE.	SECTION	COUNTY	TOTAL SHEETS	SHEET NO.
374	3268F-R-1	COOK	279	82
STA. 400+00.00		TO STA. 402+75.00		
FED. ROAD DIST. NO.		ILLINOIS FED. AID PROJECT		
CONTRACT NO. 62387				

PLAN	DATE	BY
REVISIONS		
NOTED		
ALIGNED		
CHECKED		
CAD. FILE NAME		

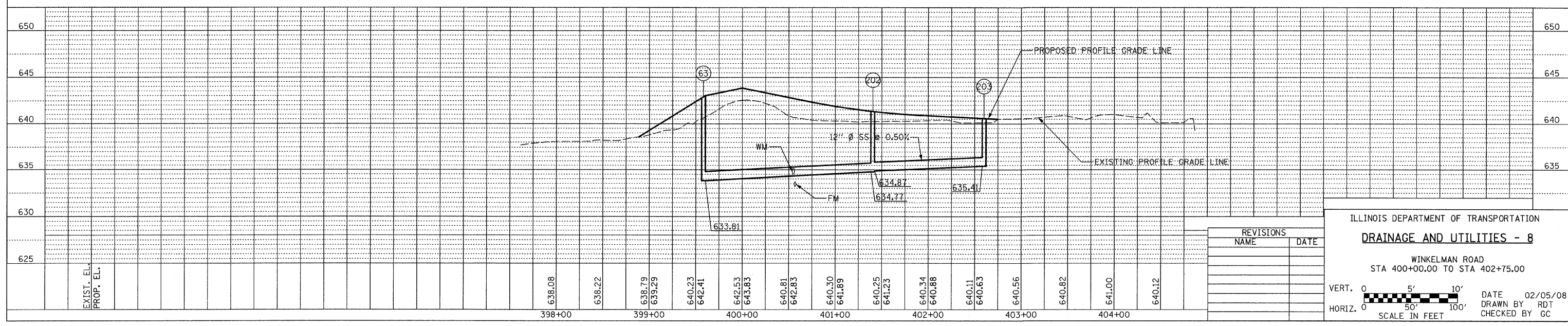
PROFILE	DATE	BY
REVISIONS		
NOTED		
GRADES CHECKED		
STRUCTURE NOTATION CHKD		



EXISTING WINKELMAN ROAD



PROPOSED WINKELMAN ROAD



REVISIONS	
NAME	DATE

ILLINOIS DEPARTMENT OF TRANSPORTATION  
**DRAINAGE AND UTILITIES - 8**  
 WINKELMAN ROAD  
 STA 400+00.00 TO STA 402+75.00

VERT. 0 5' 10'  
 HORIZ. 0 50' 100'  
 SCALE IN FEET

DATE 02/05/08  
 DRAWN BY RDT  
 CHECKED BY GC