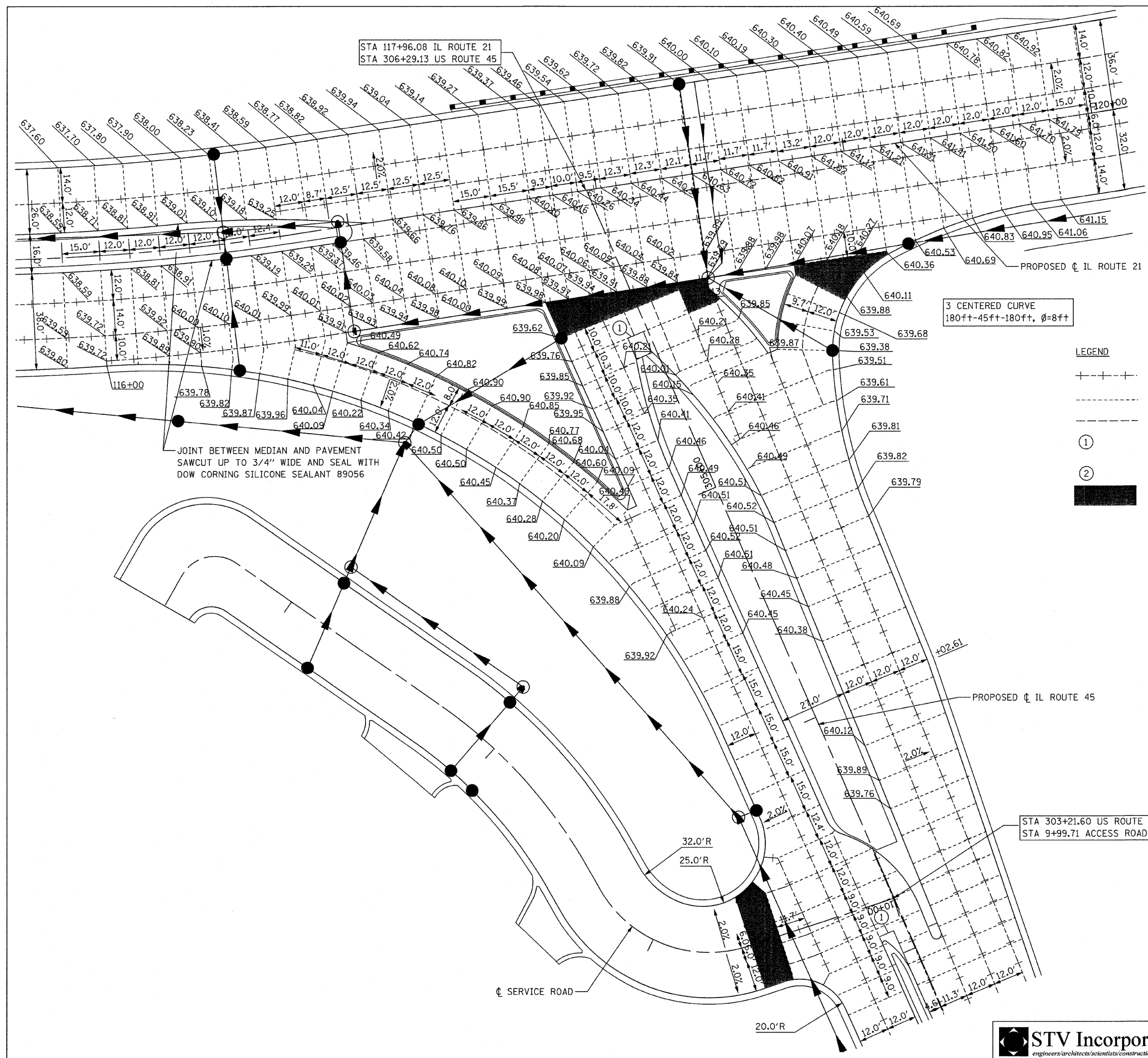
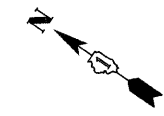


F.A.P. RTE.	SECTION	COUNTY	TOTAL SHEETS	SHEET NO.
374	3268F-R-1	COOK	279	106
STA.		TO STA.		
FED. ROAD DIST. NO.		ILLINOIS FED. AID PROJECT		
CONTRACT NO. 62387				



3 CENTERED CURVE
180ft-45ft-180ft, $\phi=8ft$

LEGEND

- +---+---+ LONGITUDINAL CONSTRUCTION JOINT
- SAWED TRANSVERSE JOINT
- SAWED LONGITUDINAL JOINT
- ① 3/4" FULL DEPTH TRANSVERSE JOINT FILL WITH PREFORMED EXPANSION JOINT FILLER.
- ② 2" TRANSVERSE JOINT
- TRANSITION PANEL (DOWELS ON ALL SIDES)

JOINT BETWEEN MEDIAN AND PAVEMENT
SAWCUT UP TO 3/4" WIDE AND SEAL WITH
DOW CORNING SILICONE SEALANT 89056

NOTES:

1. FOR MORE INFO, SEE STANDARDS 420001, 420101, AND 606001.
2. ADDITIONAL SAWED CONTRACTION JOINTS MAY BE REQUIRED IN THE FIELD AS DIRECTED BY THE ENGINEER. EXACT LOCATIONS TO BE VERIFIED IN THE FIELD AND APPROVED BY THE ENGINEER.
3. PAVEMENT BLOCK-OUTS FOR MANHOLES, VALVE VAULTS, AND OTHER STRUCTURES SHALL BE CONSTRUCTED IN ACCORDANCE WITH STANDARD 420111.
4. CONTRACTOR TO VERIFY ELEVATION OF EXISTING PAVEMENT PRIOR TO CONSTRUCTION.
5. CONCRETE ISLANDS AND MEDIANS SHALL BE CONSTRUCTED IN ACCORDANCE WITH STANDARD 606301.

REVISIONS	
NAME	DATE

ILLINOIS DEPARTMENT OF TRANSPORTATION

INTERSECTION DETAIL

ILLINOIS ROUTE 21
AT US ROUTE 45

DATE: 02/05/08
DRAWN BY: RDT
CHECKED BY: GC

0 10 20 40
SCALE IN FEET

STV Incorporated
engineers/architects/scientists/construction managers

200 W Monroe - Suite 1650
Chicago, Illinois 60606