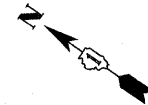
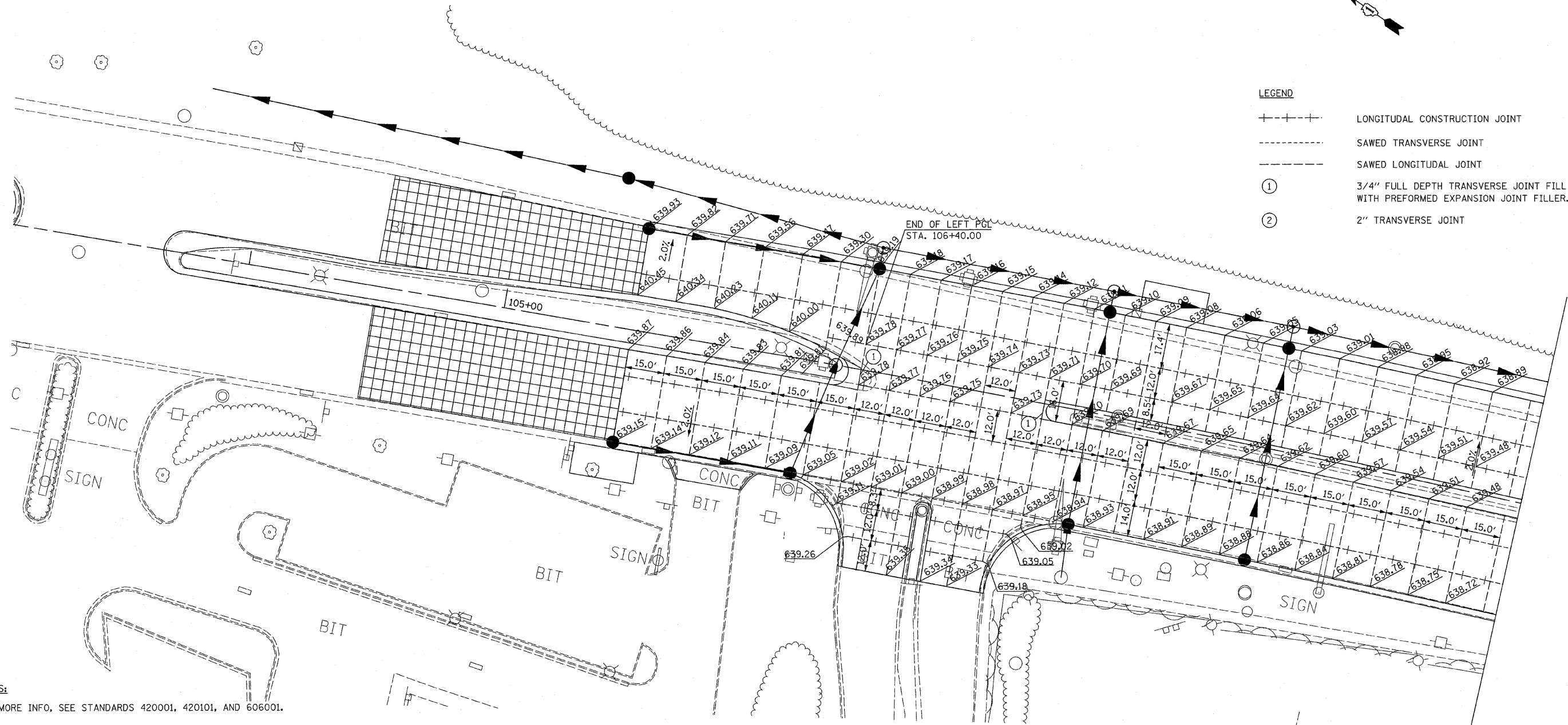


F.A.P. RTE.	SECTION	COUNTY	TOTAL SHEETS	SHEET NO.
374	3268F-R-1	COOK	279	108
STA.	TO STA.			
FED. ROAD DIST. NO.	ILLINOIS	FED. AID PROJECT		
CONTRACT NO. 62387				



**LEGEND**

---+---+---	LONGITUDINAL CONSTRUCTION JOINT
-----	SAWED TRANSVERSE JOINT
-----	SAWED LONGITUDINAL JOINT
①	3/4" FULL DEPTH TRANSVERSE JOINT FILL WITH PREFORMED EXPANSION JOINT FILLER.
②	2" TRANSVERSE JOINT



- NOTES:**
- FOR MORE INFO, SEE STANDARDS 420001, 420101, AND 606001.
  - ADDITIONAL SAWED CONTRACTION JOINTS MAY BE REQUIRED IN THE FIELD AS DIRECTED BY THE ENGINEER. EXACT LOCATIONS TO BE VERIFIED IN THE FIELD AND APPROVED BY THE ENGINEER.
  - PAVEMENT BLOCK-OUTS FOR MANHOLES, VALVE VAULTS, AND OTHER STRUCTURES SHALL BE CONSTRUCTED IN ACCORDANCE WITH STANDARD 420111.
  - CONTRACTOR TO VERIFY ELEVATION OF EXISTING PAVEMENT PRIOR TO CONSTRUCTION.
  - CONCRETE ISLANDS AND MEDIANS SHALL BE CONSTRUCTED IN ACCORDANCE WITH STANDARD 606301.

REVISIONS	
NAME	DATE

ILLINOIS DEPARTMENT OF TRANSPORTATION

**INTERSECTION DETAIL**

ILLINOIS ROUTE 21  
AT APPLE DRIVE

0 10 20 40  
SCALE IN FEET

DATE: 02/05/08  
DRAWN BY: RDT  
CHECKED BY: GC

**STV Incorporated**  
engineers/architects/scientists/construction managers

200 W Monroe - Suite 1650  
Chicago, Illinois 60606

ILLINOIS DEPARTMENT OF TRANSPORTATION