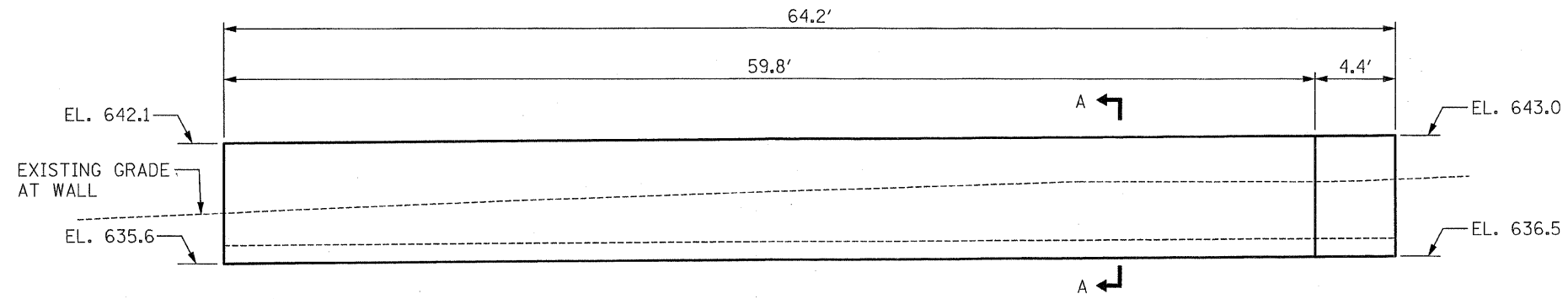
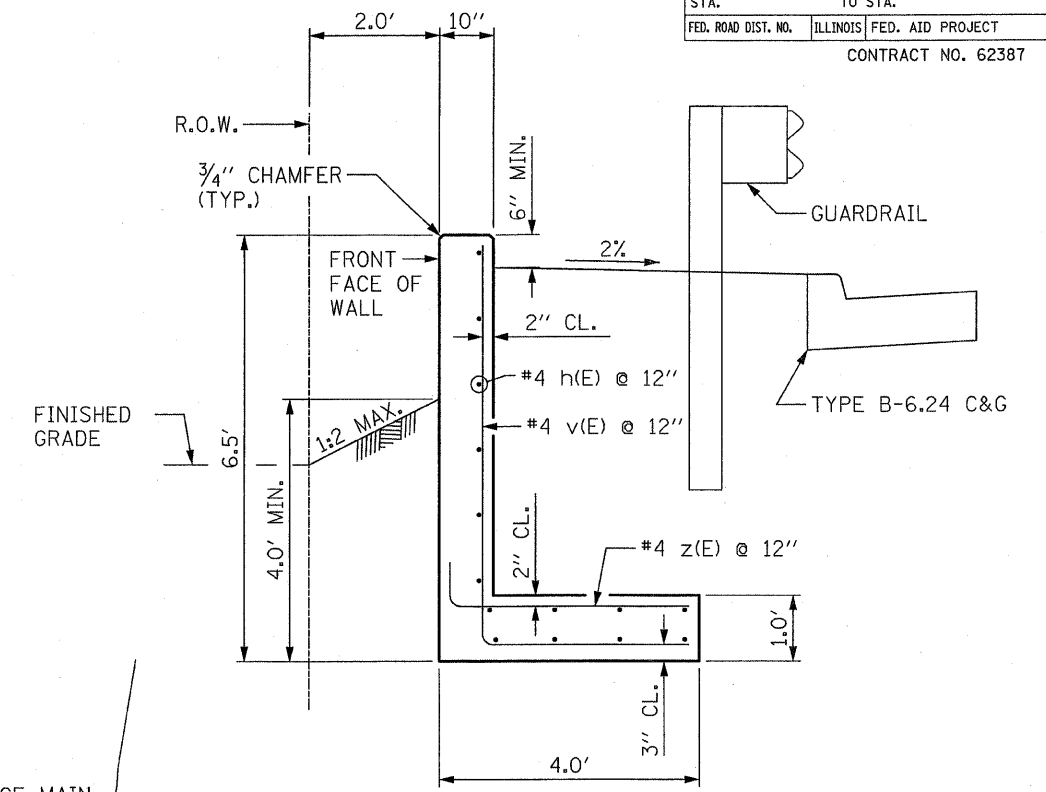


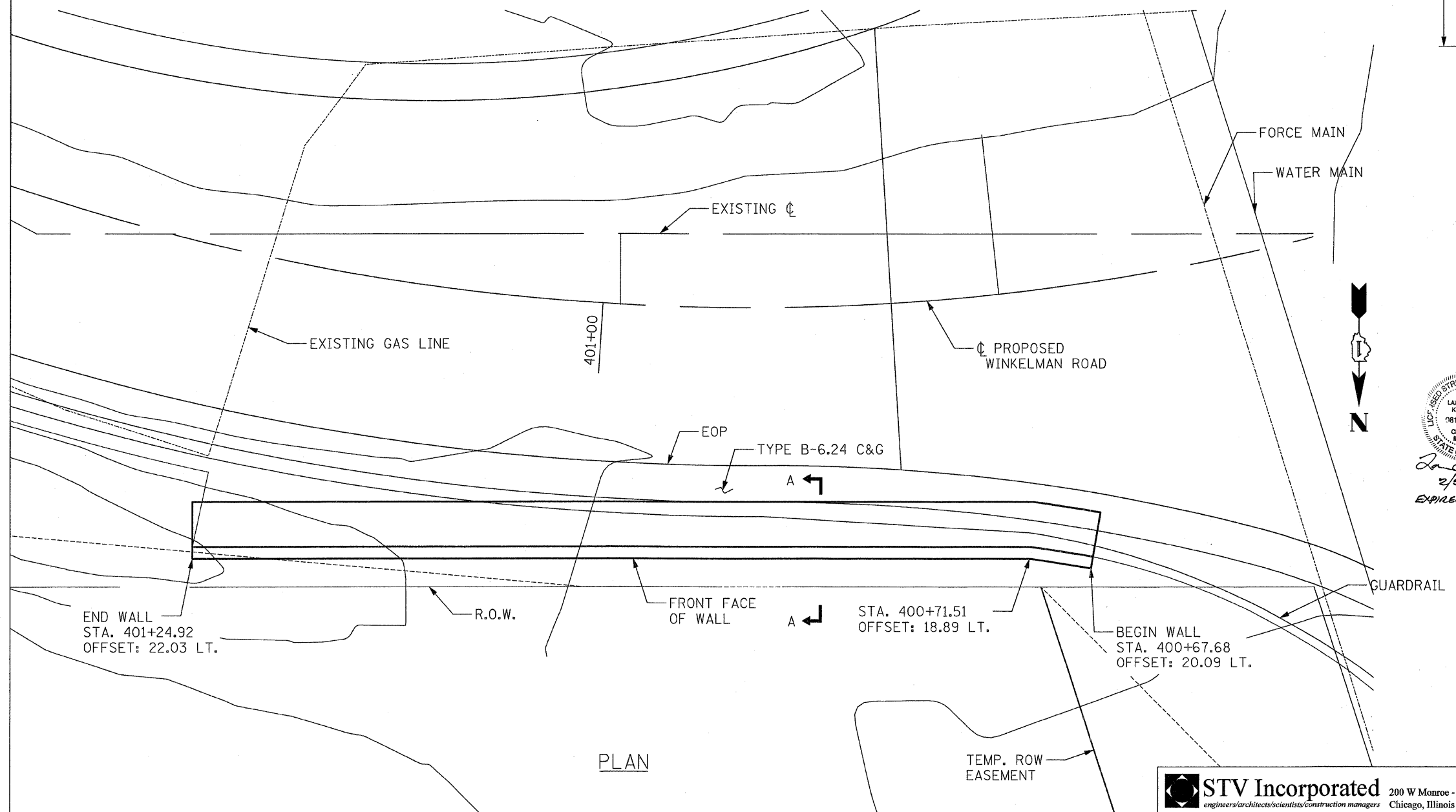
F.A.P. RTE.	SECTION	COUNTY	TOTAL SHEETS	SHEET NO.
374	3268F-R-1	COOK	279	132
STA.		TO STA.		
FED. ROAD DIST. NO.		ILLINOIS	FED. AID PROJECT	
CONTRACT NO. 62387				



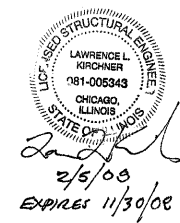
ELEVATION



SECTION A-A



PLAN



BILL OF MATERIAL

BAR	NO.	SIZE	LENGTH	SHAPE
h(E)	28	#4	32'-8"	—
v(E)	65	#4	9'-3"	└┘
z(E)	65	#4	4'-4"	└┘
CONCRETE STRUCTURES			C.Y.	20.4
REINFORCEMENT BARS, EPOXY COATED			LB	1200
STRUCTURAL EXCAVATION			C.Y.	76

REINFORCEMENT BARS DESIGNATED (E) SHALL BE EPOXY COATED.
 #4 BAR LAP = 1'-8"

REVISIONS	
NAME	DATE

ILLINOIS DEPARTMENT OF TRANSPORTATION
WINKELMAN ROAD RETAINING WALL
 SCALE: NTS
 DATE 02/05/08
 DRAWN BY BTO
 CHECKED BY JAN

STV Incorporated
engineers/architects/scientists/construction managers
 200 W Monroe - Suite 1650
 Chicago, Illinois 60606