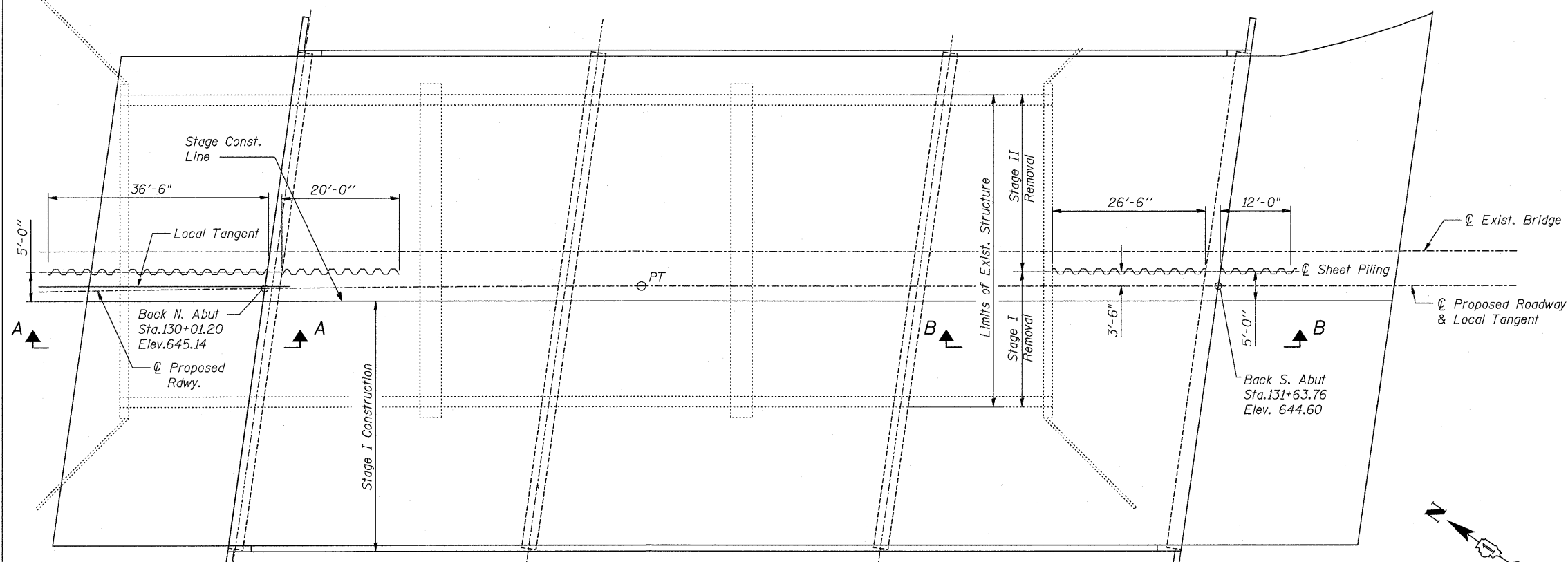


F.A.P. RTE.	SECTION	COUNTY	TOTAL SHEETS	SHEET NO.
374	3268F-R-1	COOK	279	137
STA.	TO STA.			
FED. ROAD DIST. NO.	ILLINOIS	FED. AID PROJECT		

CONTRACT NO. 62387



BILL OF MATERIAL

Item	Unit	Quantity
Temporary Sheet Piling	Sq Ft	2780

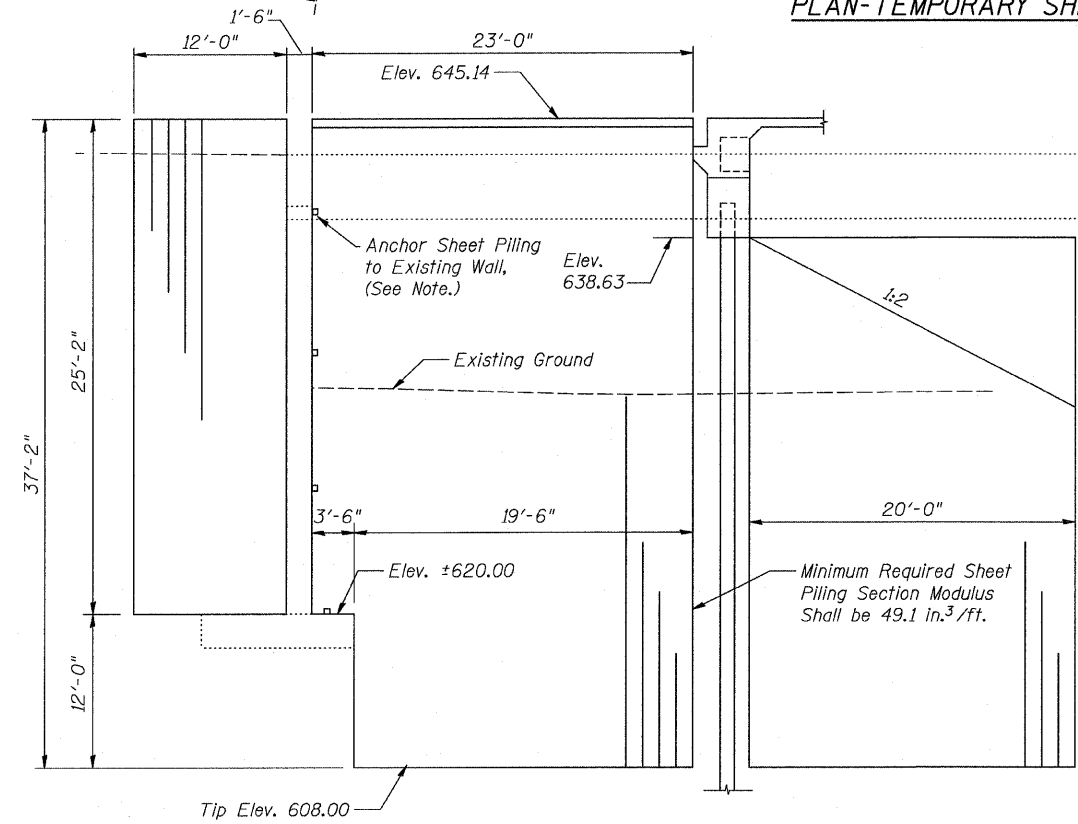
NOTE: TEMPORARY SHEET PILING

* If the Contractor chooses to alter the temporary cantilevered sheet piling design requirements shown on the plans, a design submittal including plan details and calculations will be required for review and acceptance by the Engineer.

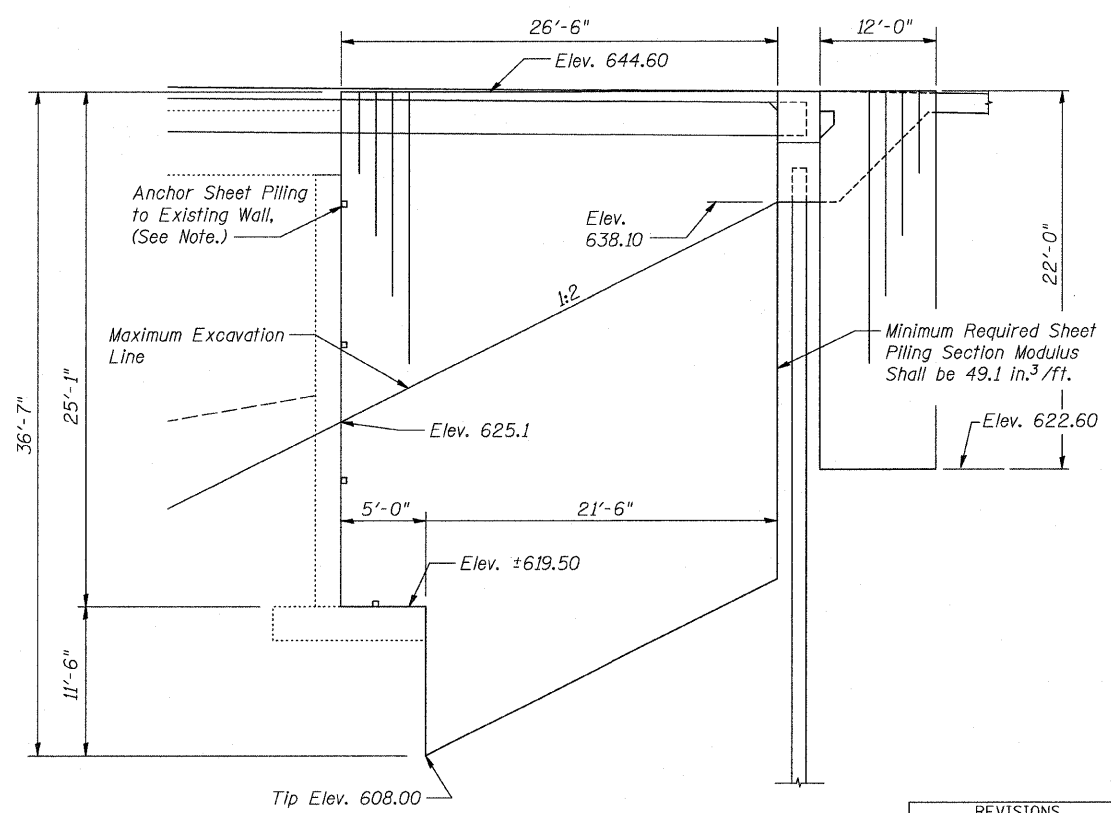
The Contractor shall connect the first sheet to the existing abutment wall to ensure stability of sheets driven to the top of the existing footing. The connection shall be reviewed and accepted by the Engineer and included in the cost for Temporary Sheet Piling.

Sheet piling within the limits of the existing footing shall have the bottom elevation at the top of the footing. Any sheets not reaching their required embedment due to the abutment footing must be restrained by developing an attachment to the existing abutment backwall. This attachment shall be approved by the Engineer.

PLAN-TEMPORARY SHEET PILING



SECTION A-A



SECTION B-B



REVISIONS	
NAME	DATE

ILLINOIS DEPARTMENT OF TRANSPORTATION
 ILLINOIS ROUTE 21
 MILWAUKEE AVE. OVER DES PLAINES RIVER
 F.A.P. ROUTE 374 SECTION 3268F-R-1
 COOK COUNTY, SN 016-6566

TEMPORARY SHEET PILING

DESIGN BY: JAW DRAWN BY: BTO
 DATE: 02/05/08 CHECKED BY: JAN CHECKED BY: JAW