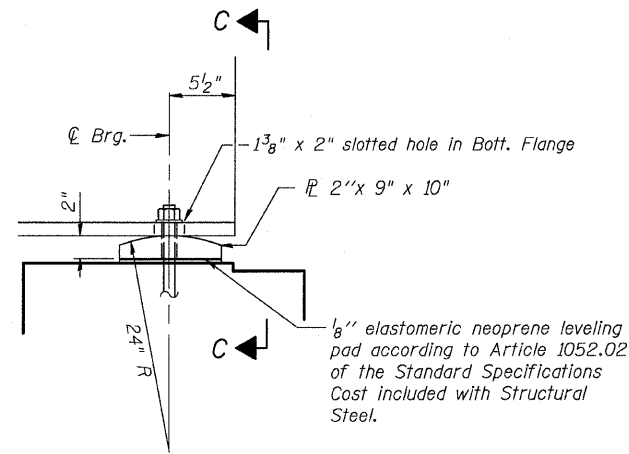


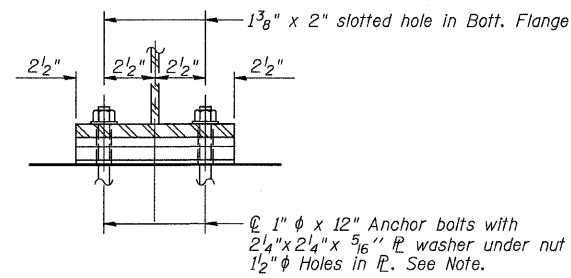
| F.A.P. RTE.         | SECTION   | COUNTY                    | TOTAL SHEETS | SHEET NO. |
|---------------------|-----------|---------------------------|--------------|-----------|
| 374                 | 3268F-R-1 | COOK                      | 279          | 149       |
| STA.                |           | TO STA.                   |              |           |
| FED. ROAD DIST. NO. |           | ILLINOIS FED. AID PROJECT |              |           |

CONTRACT NO. 62387

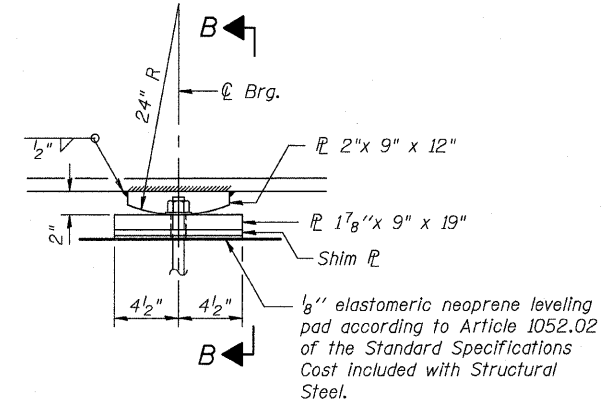


ELEVATION

BEARING AT INTEGRAL ABUTMENT

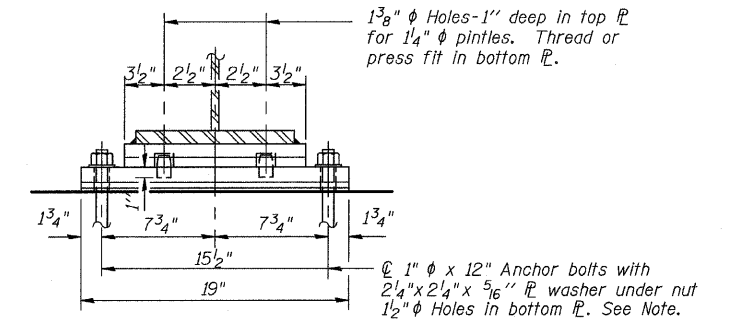


SECTION C-C

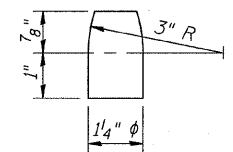


ELEVATION AT PIER

FIXED BEARING



SECTION B-B



PINTLE

FOR INFORMATION ONLY.  
INCLUDED IN BEAM FABRICATION  
CONTRACT EXCEPT FOR  
ANCHORS.

Note:

Structural steel for bearing plates shall be AASHTO M270, Grade 50W.

Anchors for bearing plates shall be 1" x 12" A307 Gr C, F 1554 Gr 36 or M314 Gr 36.

Structural steel for bearing plates shall be AASHTO M270, Grade 50W.

| REVISIONS |      |
|-----------|------|
| NAME      | DATE |
|           |      |
|           |      |
|           |      |
|           |      |
|           |      |
|           |      |
|           |      |
|           |      |
|           |      |

ILLINOIS DEPARTMENT OF TRANSPORTATION  
ILLINOIS ROUTE 21  
MILWAUKEE AVE. OVER DES PLAINES RIVER  
F.A.P. ROUTE 374 SECTION 3268F-R-1  
COOK COUNTY, SN 016-6566

BEARING DETAILS

DESIGN BY: BTO DRAWN BY: BTO  
DATE: 02/05/08 CHECKED BY: JAN CHECKED BY: JAW

**STV Incorporated**  
Engineers/Architects/Planners/Construction Managers  
200 W. Monroe Street, Suite 1650  
Chicago, IL 60606-3013  
312/553-0653, FAX 312/553-0661