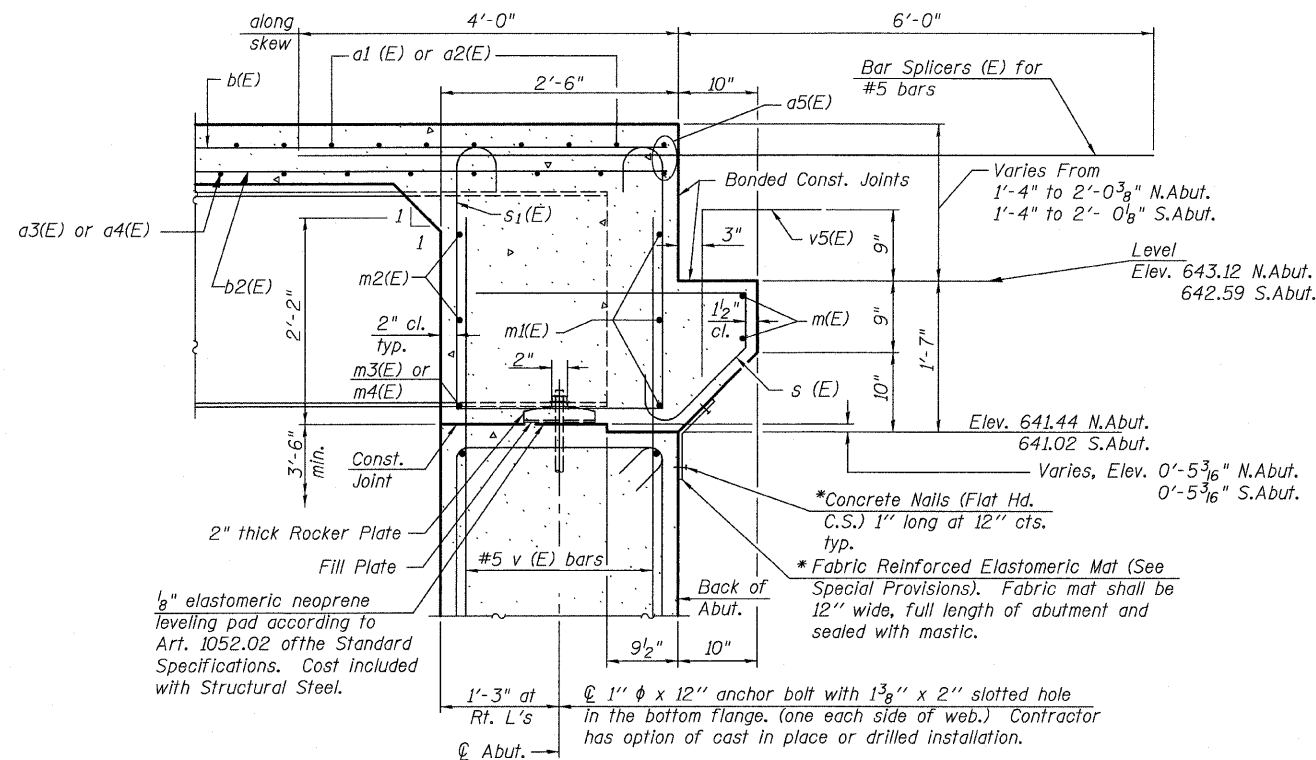


F.A.P. RTE.	SECTION	COUNTY	TOTAL SHEETS	SHEET NO.
374	3268F-R-1	COOK	279	152
STA.		TO STA.		
FED. ROAD DIST. NO.		ILLINOIS FED. AID PROJECT		

CONTRACT NO. 62387

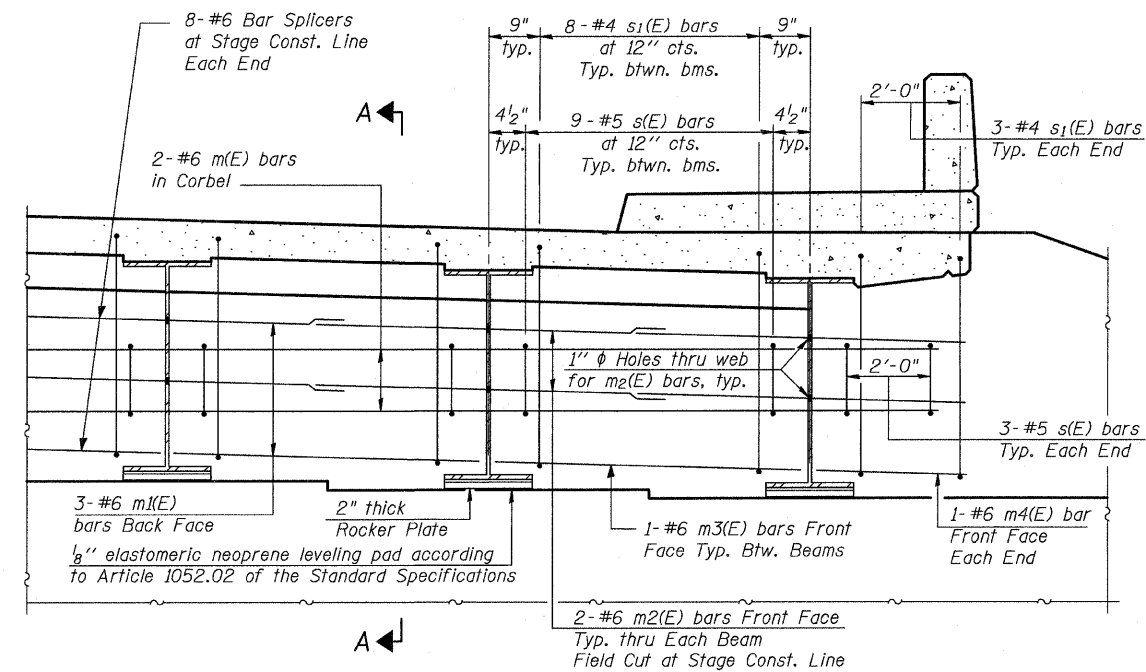
Notes:
 Reinforcement bars in diaphragm are billed with superstructure on sheet 13 of 29.
 Concrete in diaphragm is included with Concrete Superstructure on sheet 13 of 29.
 For details of bars s(E) & s1(E) see sheet 13 of 29.
 The s(E) and s1(E) bars shall be placed parallel to the beams. Spacing for these bars shall be at right angles to the beams.
 For anchor bolt details see sheet 23 of 29.
 For Abutments see sheets 18 & 19 of 29.
 Dimensions at right angles to abutment, except as shown.
 Cost included with Concrete Superstructure.

Minimum Bar Lap #6 bar = 2'-9"



SECTION A-A

* Included in the cost of Concrete Superstructure



DIAPHRAGM ELEVATION AT ABUTMENT

REVISIONS	
NAME	DATE

ILLINOIS DEPARTMENT OF TRANSPORTATION
 ILLINOIS ROUTE 21
 MILWAUKEE AVE. OVER DES PLAINES RIVER
 F.A.P. ROUTE 374 SECTION 3268F-R-1
 COOK COUNTY, SN 016-6566

ABUTMENT DIAPHRAGM DETAILS
 DESIGN BY: AWH DRAWN BY: AWH
 DATE: 02/05/08 CHECKED BY: JAW CHECKED BY: JAW

STV Incorporated
 Engineers/Architects/Planners/Construction Managers
 200 W. Monroe Street, Suite 1650
 Chicago, IL 60606-5013
 312/553-0655, FAX 312/553-0661

\s\office\jrc\105202\080220\080220.dwg 2/11/08 9:48 AM