

F.A.P. RTE.	SECTION	COUNTY	TOTAL SHEETS	SHEET NO.
374	3268F-R-1	COOK	279	171
STA. TO STA.				
FED. ROAD DIST. NO.	ILLINOIS	FED. AID PROJECT		
CONTRACT NO. 62387				

TEMPORARY CABLE PLAN LEGEND

- TEMPORARY TRAFFIC SIGNAL SECTION OR PEDESTRIAN SIGNAL SECTION 12" (300mm)
- 12" (300mm) PEDESTRIAN SIGNAL SECTION
- TEMPORARY CONTROLLER CABINET
- TEMPORARY UNINTERRUPTIBLE POWER SUPPLY
- TEMPORARY SERVICE INSTALLATION
- EMERGENCY VEHICLE LIGHT DETECTOR
- CONFIRMATION BEACON
- PUSH-BUTTON DETECTOR
- VIDEO VEHICLE DETECTOR
- DENOTES NUMBER OF CONDUCTORS. ALL CABLE NO. 14 EXCEPT AS INDICATED. ALL LOOP DETECTOR CABLE TO BE SHIELDED
- FIBER OPTIC CABLE NO. 62.5/125 MM12F SMI2F
- VIDEO DETECTOR CABLE PER VIDEO SYSTEM MANUFACTURER'S RECOMMENDATION
- GROUND ROD

① THE SIGNAL HEADS FOR STAGE II SHALL REMAIN IN PLACE. LEFT-TURN ARROW SECTIONS SHALL BE BAGGED AND DEACTIVATED.

MILWAUKEE AVENUE (US RTE 45/ ILL RTE 21)

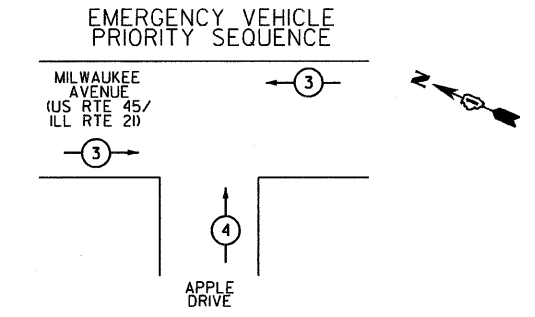
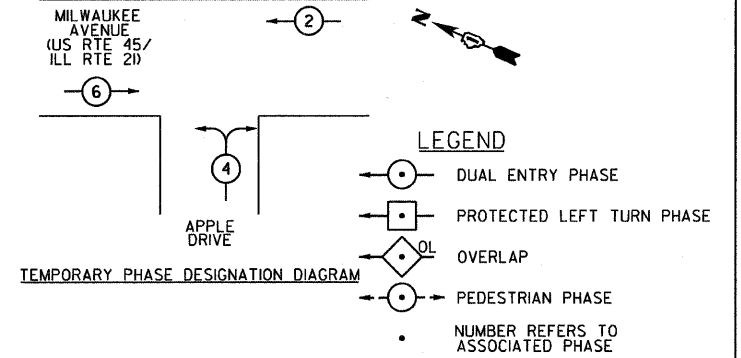
TEMPORARY INTERCONNECT TO PALATINE ROAD SOUTH RAMPS/ WILLOW ROAD

APPLE DRIVE

TEMPORARY INTERCONNECT TO US RTE 45 AT ILL RTE 21

TEMPORARY CABLE PLAN

CONTROLLER SEQUENCE



EMERGENCY VEHICLE PREEMPTORS		
EMERGENCY VEHICLE PREEMPTOR	3	4
MOVEMENT	←	↑

I.D.O.T. TRAFFIC SIGNAL INSTALLATION ELECTRICAL SERVICE REQUIREMENTS					TOTAL WATTAGE
TYPE	NO. OF LAMPS	WATTAGE	% OPERATION		
SIGNAL (RED)	10	135	17	0.50	85
(YELLOW)	10	135	25	0.25	62.5
(GREEN)	10	135	15	0.25	37.5
ARROW		135	12	0.10	
PED. SIGNAL		90	25	1.00	
CONTROLLER	1	100	100	1.00	100
ILLUM. SIGN		252		0.05	
FLASHER				0.50	
ENERGY COSTS TO:				TOTAL =	285

FOUNDATION (DEPTH)	FT. (m)	CABLE SLACK	FT. (m)	VERTICAL	FT. (m)
TYPE A - POST	4 (1.2)	HANDHOLE	6.5 (2.0)	ALL FOUNDATIONS	3.5 (1.0)
D - CONTROLLER	4 (1.2)	DOUBLE HANDHOLE	13 (4.0)	MAST ARM (L) POLE	20'+L-2'±
E - M. ARM POLE		SIGNAL POST	2 (1.0)	(6m+L-0.6m)±	
24" (600 mm)	10 (3.0)	CONTROLLER CAB.	1 (0.5)	BRACKET MOUNTED	13 (4.0)
30" (750 mm)	15 (4.6)	FIBER OPTIC	13 (4.0)	PED PUSHBUTTON	4 (1.2)
		ELECTRIC SERVICE	1 (0.5)	ELECTRIC SERVICE	13.5 (4.1)
		GROUND CABLE	1 (0.5)	SERVICE TO GROUND	13.5 (4.1)
				POST MOUNTED	6 (1.8)

NOTE: THE TEMPORARY TRAFFIC SIGNAL CONTROL EQUIPMENT FOR THIS INTERSECTION SHALL BE 'ECONOLITE' BRAND TO MATCH THE EXISTING SYSTEM.

**SPAAN Tech, Inc.**  
 311 S. Wacker Drive, Suite 2400  
 Chicago, Illinois 60606  
 phone: 312.277.8800  
 fax: 312.277.8808  
 web: www.SpaanTech.com

TS-II OF 39

ILLINOIS DEPARTMENT OF TRANSPORTATION

TEMPORARY CABLE PLAN AND TEMPORARY PHASE DESIGNATION DIAGRAM MILWAUKEE AVENUE (US RTE 45/ILL RTE 21) AT APPLE DRIVE POST STAGE II

SCALE: NONE  
 DATE: 02/05/08

DRAWN BY: RAS  
 DESIGN BY: RAS  
 CHECKED BY: ADD

default  
 untitle  
 07167.000 - ILL Rte 21 - DOT Dist 1  
 p:\07167.000 - ILL Rte 21 - DOT Dist 1\Working Files\Drawing Files\Shaf\Final\TS\TS-II.dgn  
 20.0000 11 / IN.  
 1/30/2008 9:33:47 AM

CITY OF PROSPECT HEIGHTS  
 8 NORTH ELMHURST ROAD  
 PROSPECT HEIGHTS, ILLINOIS 60070

ENERGY SUPPLY CONTACT: MS. JUDY SCHOMER  
 PHONE: (847) 870-2056  
 COMPANY: COMED