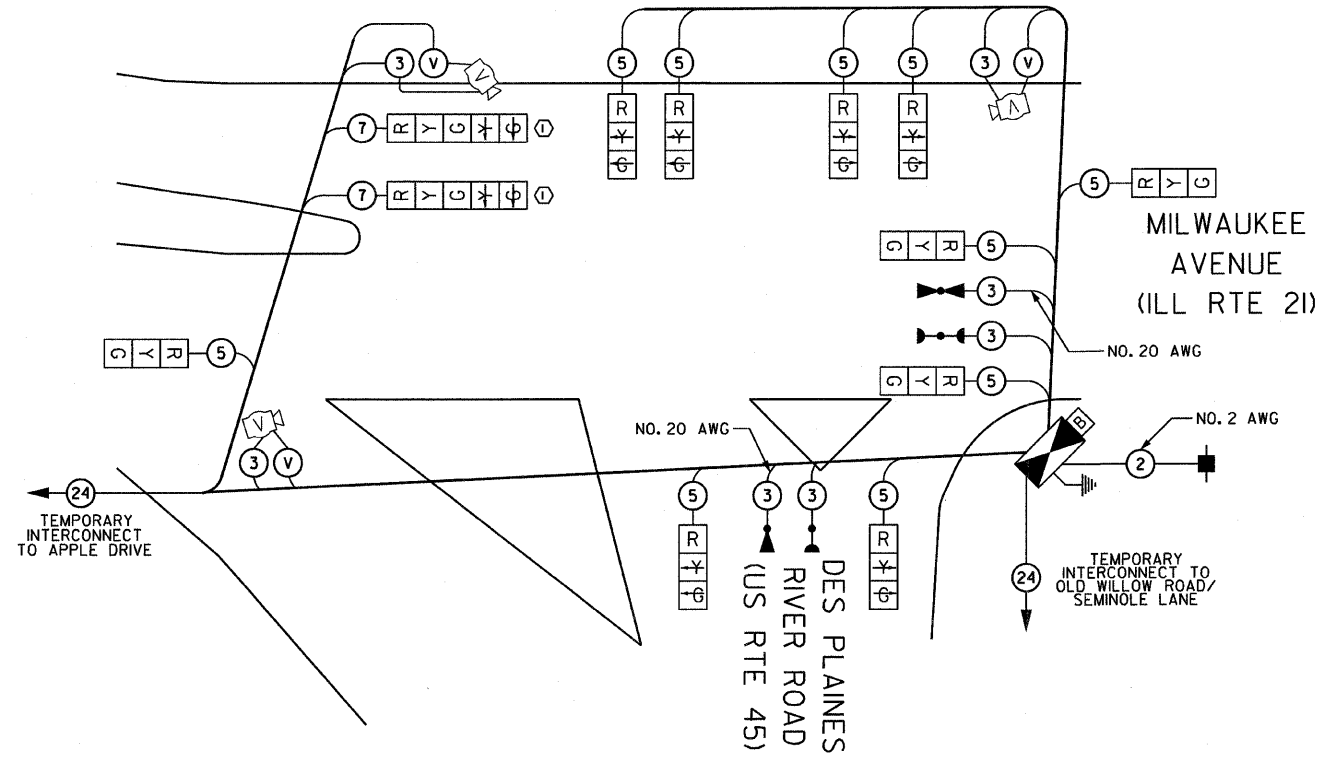


F.A.P. RTE.	SECTION	COUNTY	TOTAL SHEETS	SHEET NO.
374	3268F-R-1	COOK	279	179
STA.		TO STA.		
FED. ROAD DIST. NO.	ILLINOIS	FED. AID PROJECT		
CONTRACT NO. 62387				

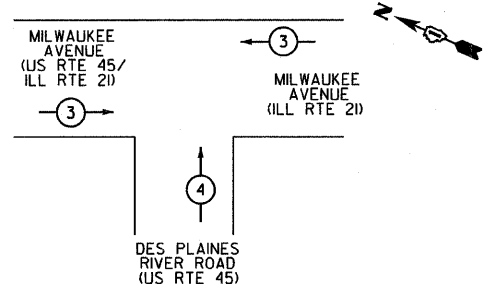
TEMPORARY CABLE PLAN LEGEND

- TEMPORARY TRAFFIC SIGNAL SECTION OR PEDESTRIAN SIGNAL SECTION 12" (300mm) (L* DENOTES LOUVERED SIGNAL HEAD)
- 12" (300mm) PEDESTRIAN SIGNAL SECTION
- TEMPORARY CONTROLLER CABINET
- TEMPORARY CONTROLLER CABINET
- TEMPORARY SERVICE INSTALLATION
- EMERGENCY VEHICLE LIGHT DETECTOR
- CONFIRMATION BEACON
- PUSH-BUTTON DETECTOR
- VIDEO VEHICLE DETECTOR
- DENOTES NUMBER OF CONDUCTORS ALL CABLE NO. 14 EXCEPT AS INDICATED ALL LOOP DETECTOR CABLE TO BE SHIELDED
- FIBER OPTIC CABLE NO. 62.5/125 MM2F SMI2F
- VIDEO DETECTOR CABLE PER VIDEO SYSTEM MANUFACTURER'S RECOMMENDATION
- GROUND ROD

① THE LEFT-TURN SECTIONS FOR NORTHBOUND MILWAUKEE AVENUE SHALL BE BAGGED AND DEACTIVATED DURING STAGE II. THEY SHALL BE ACTIVATED DURING POST STAGE II AND POST-CONSTRUCTION



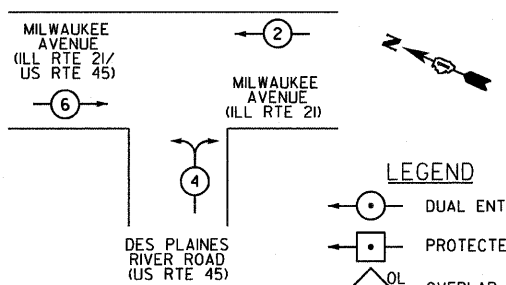
EMERGENCY VEHICLE PREEMPTION SEQUENCE



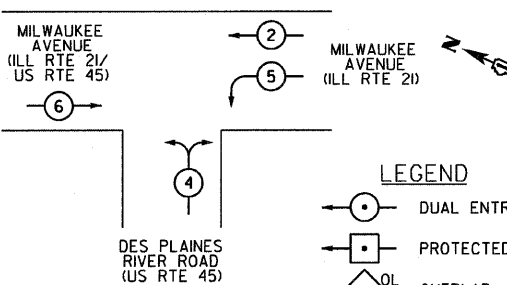
EMERGENCY VEHICLE PREEMPTORS		
EMERGENCY VEHICLE PREEMPTOR	3	4
MOVEMENT	←→	↑

TEMPORARY CABLE PLAN

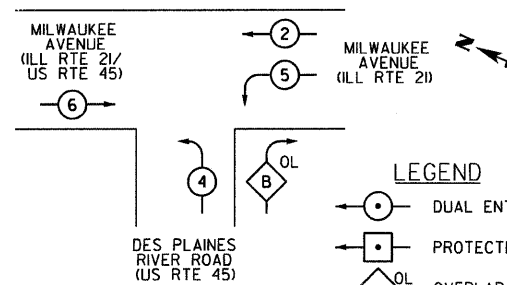
CONTROLLER SEQUENCE (STAGE II)



CONTROLLER SEQUENCE (POST STAGE II)



CONTROLLER SEQUENCE (POST-CONSTRUCTION)



- LEGEND
- DUAL ENTRY PHASE
 - PROTECTED LEFT TURN PHASE
 - OVERLAP
 - PEDESTRIAN PHASE
 - NUMBER REFERS TO ASSOCIATED PHASE

- LEGEND
- DUAL ENTRY PHASE
 - PROTECTED LEFT TURN PHASE
 - OVERLAP
 - PEDESTRIAN PHASE
 - NUMBER REFERS TO ASSOCIATED PHASE

- LEGEND
- DUAL ENTRY PHASE
 - PROTECTED LEFT TURN PHASE
 - OVERLAP
 - PEDESTRIAN PHASE
 - NUMBER REFERS TO ASSOCIATED PHASE

TEMPORARY PHASE DESIGNATION DIAGRAM

OVERLAP LETTER	PERMISSIVE PHASE	PROTECTED PHASE
B	= 4	+ 5

NOTE: THE POST-CONSTRUCTION STAGE IS THE PERIOD AFTER ALL LANES HAVE BEEN CONSTRUCTED AND OPENED TO TRAFFIC, BUT BEFORE THE NEW PERMANENT TRAFFIC SIGNAL HAS BEEN ACTIVATED.

I.D.O.T. TRAFFIC SIGNAL INSTALLATION ELECTRICAL SERVICE REQUIREMENTS					TOTAL WATTAGE
TYPE	NO. OF LAMPS	INCAND.	LED %	OPERATION	
SIGNAL (RED)	12	135	17	0.50	102
(YELLOW)	12	135	25	0.25	75
(GREEN)	12	135	15	0.25	45
ARROW	4	135	12	0.10	4.8
PED. SIGNAL		90	25	1.00	
CONTROLLER	1	100	100	1.00	100
ILLUM. SIGN		252		0.05	
FLASHER				0.50	
ENERGY COSTS TO:				TOTAL =	326.8

ILLINOIS DEPARTMENT OF TRANSPORTATION
 DIVISION OF HIGHWAYS / DISTRICT I
 201 WEST CENTER COURT / SCHAMBURG, IL 60196-1096

ENERGY SUPPLY CONTACT: MS. JUDY SCHOMER
 PHONE: (847) 870-2056
 COMPANY: COMED

FOUNDATION (DEPTH)	FT. (m)	CABLE SLACK	FT. (m)	VERTICAL	FT. (m)
TYPE A - POST	4 (1.2)	HANDHOLE	6.5 (2.0)	ALL FOUNDATIONS	3.5 (1.0)
D - CONTROLLER	4 (1.2)	DOUBLE HANDHOLE	13 (4.0)	MAST ARM (L) POLE	20'+L-2' (6m+L-0.6m)=
E - M. ARM POLE		SIGNAL POST	2 (1.0)		
24" (600 mm)	10 (3.0)	CONTROLLER CAB.	1 (0.5)	BRACKET MOUNTED	13 (4.0)
30" (750 mm)	15 (4.6)	FIBER OPTIC	13 (4.0)	PED PUSHBUTTON	4 (1.2)
		ELECTRIC SERVICE	1 (0.5)	ELECTRIC SERVICE	13.5 (4.1)
		GROUND CABLE	1 (0.5)	SERVICE TO GROUND	13.5 (4.1)
				POST MOUNTED	6 (1.8)

NOTE: THE TEMPORARY TRAFFIC SIGNAL CONTROL EQUIPMENT FOR THIS INTERSECTION SHALL BE "ECONOLITE" BRAND TO MATCH THE EXISTING SYSTEM.

SPAAN Tech, Inc.
 311 S. Wacker Drive, Suite 2400
 Chicago, Illinois 60606
 phone: 312.277.8800
 fax: 312.277.8808
 web: www.SpaanTech.com

REVISIONS	
NAME	DATE

ILLINOIS DEPARTMENT OF TRANSPORTATION

TEMPORARY CABLE PLAN AND TEMPORARY PHASE DESIGNATION DIAGRAM
 MILWAUKEE AVENUE (US RTE 45/ILL RTE 21)
 AT DES PLAINES RIVER ROAD (US RTE 45)
 STAGE II, POST STAGE II, AND POST-CONSTRUCTION

SCALE: NONE
 DATE: 02/05/08

DRAWN BY: RAS
 DESIGN BY: RAS
 CHECKED BY: ADO

I:\Projects\2008\2008-11-10\DOT\Dist 1\Working Files\Drawing Files\sh\sh\Final\TS-19.dgn
 20:0000 ft / IN.
 1/30/2008 11:31:50 AM
 0767.000 - ILL RTE 21 - DOT Dist 1
 p:\0767.000 - ILL RTE 21 - DOT Dist 1\Working Files\Drawing Files\sh\sh\Final\TS-19.dgn
 1/30/2008