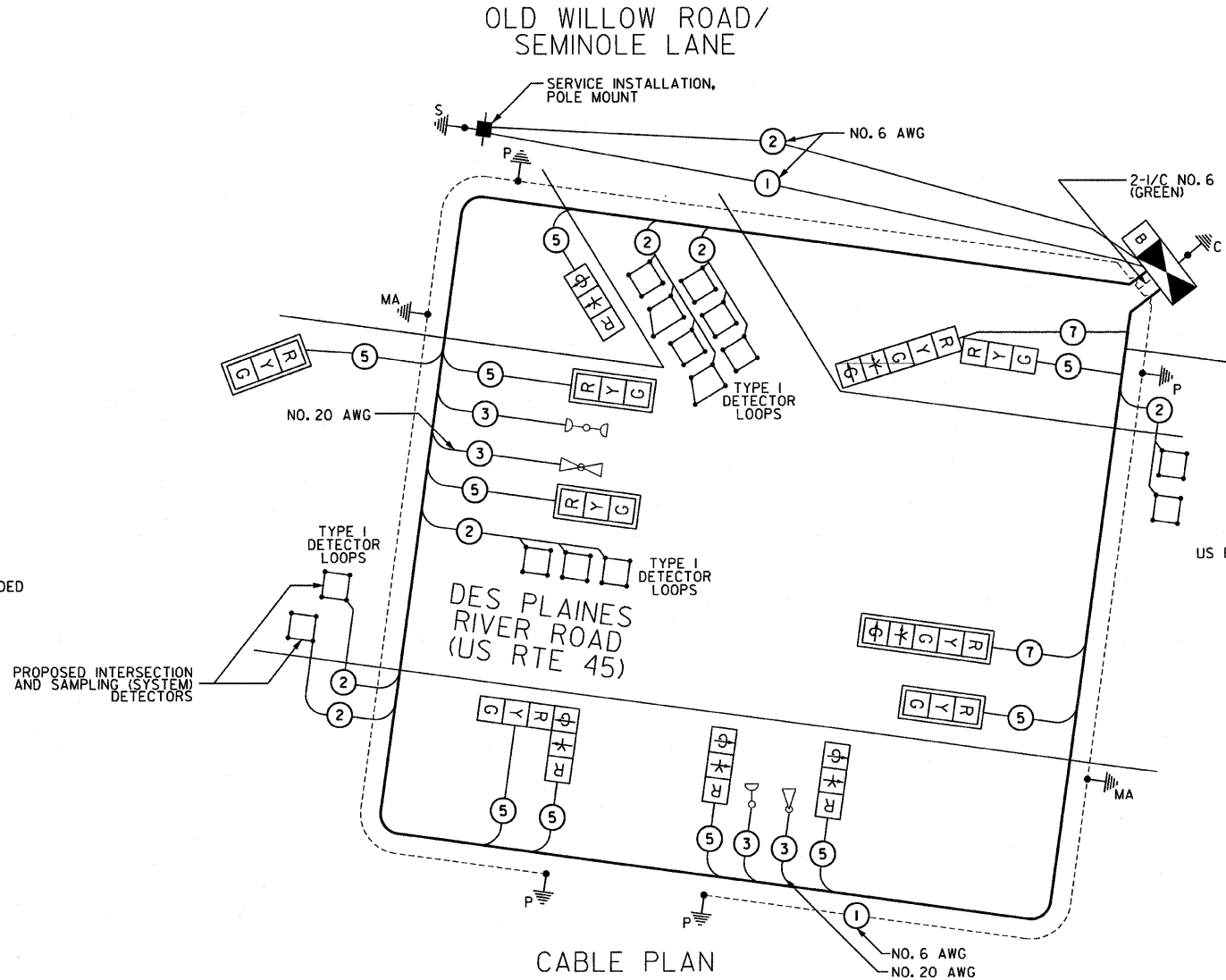


CABLE PLAN LEGEND

EXISTING	PROPOSED	DESCRIPTION
[R]	[R]	8" (200mm) TRAFFIC SIGNAL SECTION
[R]	[R]	12" (300mm) TRAFFIC SIGNAL SECTION
[W]	[W]	12" (300mm) PEDESTRIAN SIGNAL SECTION
[W]	[W]	12" (300mm) PEDESTRIAN SIGNAL SECTION
[C]	[C]	CONTROLLER CABINET
[S]	[S]	SERVICE INSTALLATION
[T]	[T]	TELEPHONE CONNECTION
[M]	[M]	MAGNETIC DETECTOR
[E]	[E]	EMERGENCY VEHICLE LIGHT DETECTOR
[B]	[B]	CONFIRMATION BEACON
[P]	[P]	PUSH-BUTTON DETECTOR
[V]	[V]	VEHICLE DETECTOR, INDUCTION LOOP (PERFORMED UNLESS NOTED OTHERWISE)
[2]	[2]	DENOTES NUMBER OF CONDUCTORS. ALL CABLE NO. 14 EXCEPT AS INDICATED. ALL LOOP DETECTOR CABLE TO BE SHIELDED.
[M]	[M]	MICROWAVE VEHICLE SENSOR
[R]	[R]	SIGNAL FACE WITH BACKPLATE. 'P' INDICATES PROGRAMMED HEAD.
[E]	[E]	RAILROAD CONTROL CABINET
[E]	[E]	ILLUMINATED SIGN "NO LEFT TURN"
[E]	[E]	ILLUMINATED SIGN "NO RIGHT TURN"
[H/C]	[C]	GROUND ROD AT HANDHOLE (H), DOUBLE HANDHOLE (H), OR CONTROLLER (C)
[MA/P]	[MA/P]	GROUND ROD AT POST (P), OR MAST ARM POLE (MA)
[S]	[S]	GROUND ROD AT ELECTRIC SERVICE INSTALLATION
[1]	[1]	GROUND CABLE IN CONDUIT NO. 6 SOLID COPPER (GREEN)
[24]	[24]	FIBER OPTIC CABLE IN CONDUIT NO. 62.5/125 MM2F SM2F
[B]	[B]	UNINTERRUPTIBLE POWER SUPPLY



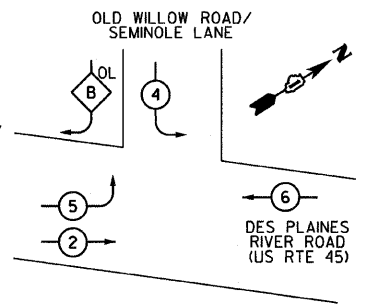
THE END OF THE TRACER CABLE SHALL BE CONTINUOUS AND EXTEND INTO THE CONTROLLER CABINET.

SCHEDULE OF QUANTITIES

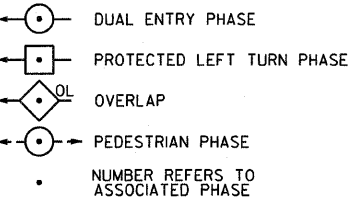
ITEM	UNIT	QUANTITY
SIGN PANEL - TYPE 2	SQ FT	30
CONDUIT IN TRENCH, 2" DIA., GALVANIZED STEEL	FOOT	492
CONDUIT IN TRENCH, 2 1/2" DIA., GALVANIZED STEEL	FOOT	84
CONDUIT IN TRENCH, 4" DIA., GALVANIZED STEEL	FOOT	48
CONDUIT PUSHED, 2" DIA., GALVANIZED STEEL	FOOT	90
CONDUIT PUSHED, 4" DIA., GALVANIZED STEEL	FOOT	233
HANDHOLE	EACH	7
HEAVY-DUTY HANDHOLE	EACH	1
DOUBLE HANDHOLE	EACH	1
TRENCH AND BACKFILL FOR ELECTRICAL WORK	FOOT	628
FULL-ACTUATED CONTROLLER AND TYPE IV CABINET, SPECIAL	EACH	1
TRANSCEIVER - FIBER OPTIC	EACH	1
ELECTRIC CABLE IN CONDUIT, SIGNAL NO. 14 3C	FOOT	350
ELECTRIC CABLE IN CONDUIT, SIGNAL NO. 14 5C	FOOT	1842
ELECTRIC CABLE IN CONDUIT, SIGNAL NO. 14 7C	FOOT	296
ELECTRIC CABLE IN CONDUIT, LEAD-IN, NO. 14 1 PAIR	FOOT	1640
ELECTRIC CABLE IN CONDUIT, SERVICE, NO. 6 2C	FOOT	120
TRAFFIC SIGNAL POST, GALVANIZED STEEL 14 FT.	EACH	2
TRAFFIC SIGNAL POST, GALVANIZED STEEL 16 FT.	EACH	1
TRAFFIC SIGNAL POST, GALVANIZED STEEL 18 FT.	EACH	1
STEEL MAST ARM ASSEMBLY AND POLE, 24 FT.	EACH	2
CONCRETE FOUNDATION, TYPE A	FOOT	16
CONCRETE FOUNDATION, TYPE C	FOOT	4
CONCRETE FOUNDATION, TYPE E 30-INCH DIAMETER	FOOT	20
SIGNAL HEAD, LED, 1-FACE, 3-SECTION, MAST-ARM MOUNTED	EACH	4
SIGNAL HEAD, LED, 1-FACE, 3-SECTION, BRACKET MOUNTED	EACH	3
SIGNAL HEAD, LED, 1-FACE, 5-SECTION, MAST-ARM MOUNTED	EACH	1
SIGNAL HEAD, LED, 2-FACE, 3-SECTION, BRACKET MOUNTED	EACH	1
SIGNAL HEAD, LED, 2-FACE, 1-3 SECTION, 1-5 SECTION, BRACKET MOUNTED	EACH	1
TRAFFIC SIGNAL BACKPLATE, LOUVERED, ALUMINUM	EACH	5
INDUCTIVE LOOP DETECTOR	FOOT	6
DETECTOR LOOP, TYPE I	FOOT	448
TEMPORARY TRAFFIC SIGNAL INSTALLATION	EACH	1
RELOCATE EXISTING EMERGENCY VEHICLE PRIORITY SYSTEM, DETECTOR UNIT	EACH	3
RELOCATE EXISTING EMERGENCY VEHICLE PRIORITY SYSTEM, PHASING UNIT	EACH	1
REMOVE EXISTING TRAFFIC SIGNAL EQUIPMENT	EACH	1
REMOVE EXISTING HANDHOLE	EACH	8
REMOVE EXISTING CONCRETE FOUNDATION	EACH	6
PERFORMED DETECTOR LOOP	FOOT	66
SERVICE INSTALLATION, POLE MOUNT	EACH	1
UNINTERRUPTIBLE POWER SUPPLY	EACH	1
ELECTRIC CABLE IN CONDUIT, GROUNDING NO. 6 1C	FOOT	695
ELECTRIC CABLE IN CONDUIT NO. 20 3/C, TWISTED, SHIELDED	FOOT	365

NOTE: 100% OF THE COST OF ITEMS DENOTED WITH A * IS PAYABLE BY THE VILLAGE OF MOUNT PROSPECT.

PROPOSED CONTROLLER SEQUENCE

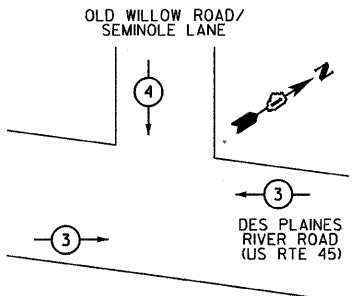


LEGEND



PHASE DESIGNATION DIAGRAM
OVERLAP LETTER PERMISSIVE PHASE PROTECTED PHASE
B = 4 + 5

EMERGENCY VEHICLE PRIORITY SEQUENCE



EXISTING EMERGENCY VEHICLE PREEMPTORS	MOVEMENT
EMERGENCY VEHICLE PREEMPTOR	3 4
MOVEMENT	← → ↓

NOTE: THE TRAFFIC SIGNAL CONTROL EQUIPMENT FOR THIS INTERSECTION SHALL BE "ECONOLITE" BRAND TO MATCH THE EXISTING SYSTEM.

SPAAN Tech, Inc.
311 S. Wacker Drive, Suite 2400
Chicago, Illinois 60606
phone: 312.277.8800
fax: 312.277.8808
web: www.SpaanTech.com

REVISIONS		ILLINOIS DEPARTMENT OF TRANSPORTATION
NAME	DATE	
		SCHEDULE OF QUANTITIES, CABLE PLAN, AND PHASE DESIGNATION DIAGRAM DES PLAINES RIVER ROAD (US RTE 45) AT OLD WILLOW ROAD/SEMINOLE LANE

SCALE: NONE
DATE: 02/05/08
DRAWN BY: RAS
DESIGN BY: RAS
CHECKED BY: ADD

I.D.O.T. TRAFFIC SIGNAL INSTALLATION ELECTRICAL SERVICE REQUIREMENTS				TOTAL WATTAGE	
TYPE	NO. OF LAMPS	WATTAGE	% OPERATION		
SIGNAL (RED)	12	135	17	0.50	102
(YELLOW)	12	135	25	0.25	75
(GREEN)	12	135	15	0.25	45
ARROW	4	135	12	0.10	4.8
PED. SIGNAL		90	25	1.00	
CONTROLLER	1	100	100	1.00	100
ILLUM. SIGN		252		0.05	
FLASHER				0.50	
TOTAL =				326.8	

ENERGY COSTS TO: VILLAGE OF MOUNT PROSPECT (50%)
50 SOUTH EMERSON STREET/MOUNT PROSPECT, ILLINOIS 60056

CITY OF PROSPECT HEIGHTS (50%)
8 NORTH ELMHURST ROAD/PROSPECT HEIGHTS, ILLINOIS 60070

ENERGY SUPPLY CONTACT: MS. JUDY SCHOMER
PHONE: (847) 870-2056
COMPANY: COMED

FOUNDATION (DEPTH)	FT. (m)	CABLE SLACK	FT. (m)	VERTICAL	FT. (m)
TYPE A - POST	4 (1.2)	HANDHOLE	6.5 (2.0)	ALL FOUNDATIONS	3.5 (1.0)
D - CONTROLLER	4 (1.2)	DOUBLE HANDHOLE	13 (4.0)	MAST ARM (L) POLE	20'+L-2'
E - M. ARM POLE		SIGNAL POST	2 (0.6)	(6m+L-0.6m)±	
24" (600 mm)	10 (3.0)	CONTROLLER CAB.	1 (0.5)	BRACKET MOUNTED	13 (4.0)
30" (750 mm)	15 (4.6)	FIBER OPTIC	13 (4.0)	PED PUSHBUTTON	4 (1.2)
		ELECTRIC SERVICE	1 (0.5)	ELECTRIC SERVICE	13.5 (4.1)
		GROUND CABLE	1 (0.5)	SERVICE TO GROUND	13.5 (4.1)
				POST MOUNTED	6 (1.8)

def: 01/16/00 - ILL. Rte. 21 - DOT Dist. 1
 07/16/00 - ILL. Rte. 21 - DOT Dist. 1
 pa: 07/16/00 - ILL. Rte. 21 - DOT Dist. 1
 12:56:46 PM 20:0000 # / IN.
 I:\Working Files\Working Files\shht\Final\TS-28.dgn