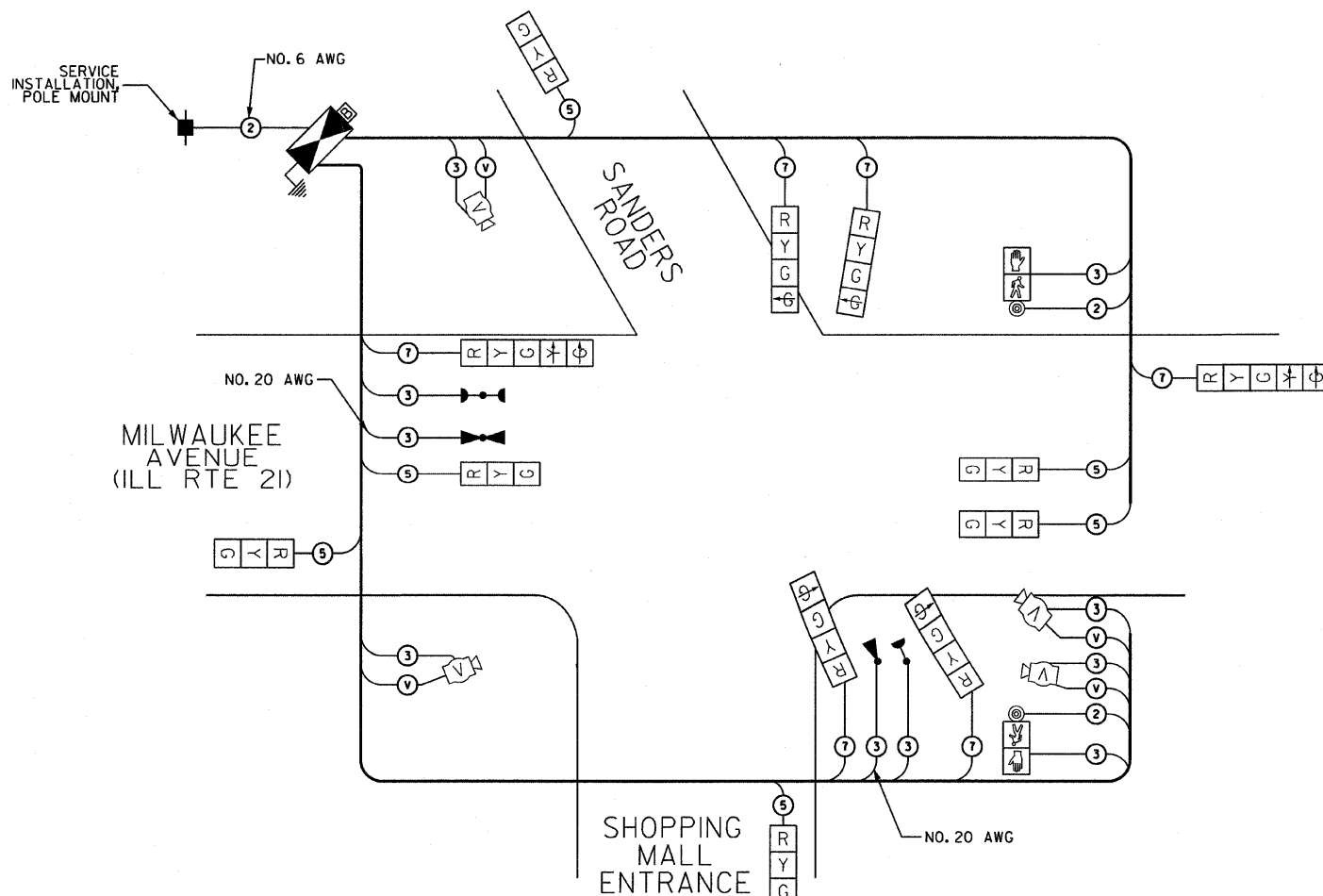


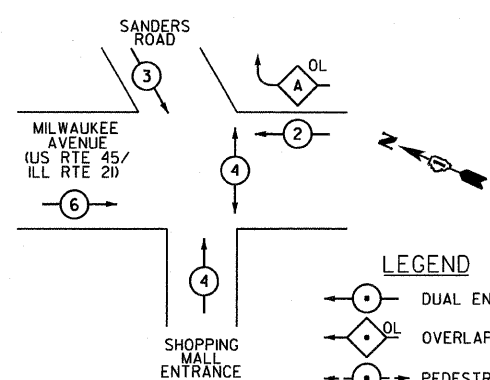
F.A.P. RTE.	SECTION	COUNTY	TOTAL SHEETS	SHEET NO.
374	326BF-R-1	COOK	279	190
STA.		TO STA.		
FED. ROAD DIST. NO.	ILLINOIS	FED. AID PROJECT		
CONTRACT NO. 62387				

TEMPORARY CABLE PLAN LEGEND

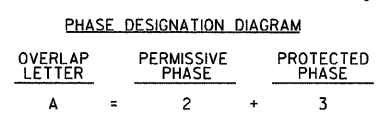
- TEMPORARY TRAFFIC SIGNAL SECTION OR PEDESTRIAN SIGNAL SECTION 12" (300mm)
- 12" (300mm) PEDESTRIAN SIGNAL SECTION
- TEMPORARY CONTROLLER CABINET
- TEMPORARY UNINTERRUPTIBLE POWER SUPPLY
- TEMPORARY SERVICE INSTALLATION
- EMERGENCY VEHICLE LIGHT DETECTOR
- CONFIRMATION BEACON
- PUSH-BUTTON DETECTOR
- VIDEO VEHICLE DETECTOR
- DENOTES NUMBER OF CONDUCTORS ALL CABLE NO. 14 EXCEPT AS INDICATED ALL LOOP DETECTOR CABLE TO BE SHIELDED
- FIBER OPTIC CABLE NO. 62.5/125 MM12F SM12F
- VIDEO DETECTOR CABLE PER VIDEO SYSTEM MANUFACTURER'S RECOMMENDATION
- GROUND ROD



CONTROLLER SEQUENCE



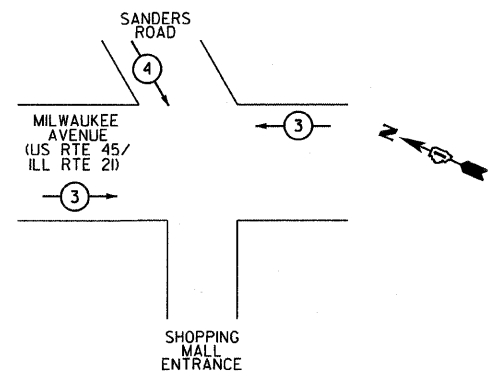
- LEGEND
- DUAL ENTRY PHASE
 - OVERLAP
 - PEDESTRIAN PHASE
 - NUMBER REFERS TO ASSOCIATED PHASE



NOTE: OVERLAP "A" SHALL BE DEACTIVATED DURING STAGES I AND II. THE RIGHT TURN ARROW SIGNAL SECTIONS CORRESPONDING TO OVERLAP "A" SHALL BE BAGGED WHILE THE OVERLAP IS DEACTIVATED.

TEMPORARY CABLE PLAN

EMERGENCY VEHICLE PRIORITY SEQUENCE



EMERGENCY VEHICLE PREEMPTORS	
EMERGENCY VEHICLE PREEMPTOR	3 4
MOVEMENT	← ↓

I.D.O.T. TRAFFIC SIGNAL INSTALLATION ELECTRICAL SERVICE REQUIREMENTS					TOTAL WATTAGE
TYPE	NO. OF LAMPS	WATTAGE	INCAND. LED % OPERATION		
SIGNAL (RED)	12	135	17	0.50	102
(YELLOW)	12	135	25	0.25	75
(GREEN)	14	135	15	0.25	52.5
ARROW	4	135	12	0.10	4.8
PED. SIGNAL		90	25	1.00	
CONTROLLER	1	100	100	1.00	100
ILLUM. SIGN		252		0.05	
FLASHER				0.50	
ENERGY COSTS TO:				TOTAL =	334.3

IDOT DIVISION OF HIGHWAYS / DISTRICT 1 (75%)
 201 WEST CENTER COURT/SCHAUMBURG, ILLINOIS 60196
 ANGELOPOULOUST AND GIANNOS (25%)
 ENERGY SUPPLY CONTACT: MS. JUDY SCHOMER
 PHONE: (847) 870-2056
 COMPANY: COMED

FOUNDATION (DEPTH)	FT. (m)	CABLE SLACK	FT. (m)	VERTICAL	FT. (m)
TYPE A - POST	4 (1.2)	HANDHOLE	6.5 (2.0)	ALL FOUNDATIONS	3.5 (1.0)
D - CONTROLLER	4 (1.2)	DOUBLE HANDHOLE	13 (4.0)	MAST ARM (L) POLE	20'+L-2' (6m+L-0.6m)=
E - M. ARM POLE		SIGNAL POST	2 (0.6)	BRACKET MOUNTED	13 (4.0)
24" (600 mm)	10 (3.0)	CONTROLLER CAB.	1 (0.5)	PED PUSHBUTTON	4 (1.2)
30" (750 mm)	15 (4.6)	FIBER OPTIC	13 (4.0)	ELECTRIC SERVICE	13.5 (4.1)
		ELECTRIC SERVICE	1 (0.5)	SERVICE TO GROUND	13.5 (4.1)
		GROUND CABLE	1 (0.5)	POST MOUNTED	6 (1.8)

SPAAN Tech, Inc.
 311 S. Wacker Drive, Suite 2400
 Chicago, Illinois 60606
 phone: 312.277.8800
 fax: 312.277.8808
 web: www.SpaanTech.com

REVISIONS	
NAME	DATE

ILLINOIS DEPARTMENT OF TRANSPORTATION
 TEMPORARY CABLE PLAN AND
 TEMPORARY PHASE DESIGNATION DIAGRAM
 MILWAUKEE AVENUE (ILL RTE 21)
 AT SANDERS ROAD
 SCALE: NONE
 DATE: 02/05/08
 DRAWN BY: RAS
 DESIGN BY: RAS
 CHECKED BY: ADO

default
 07/16/2000 - ILL RTE 21 - IDOT Dist 1
 p:\0716\1000 - ILL RTE 21 - IDOT Dist 1\Working Files\Drawings Files\sh\Final\TS\TS-30.dgn
 20,0000 4+ / IN.
 1/30/2008 10:05:56 PM